

V&V Reference Report

L2 ASCDS Version : 7.6.8.1

Observation 4091 - L2 Version 001
Chandra X-Ray Center

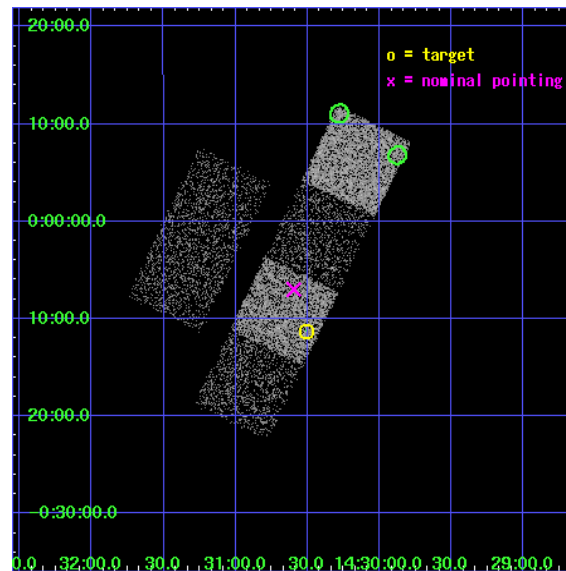
L2 Processing Date : Aug 4 2006

Contents

1	Front	2
2	OBI	3
2.1	OBI	3
2.1.1	Images	3
2.1.2	Bias	3
2.1.3	Parameters	4
2.1.4	Events	4
2.2	Compared Parameters	5
2.3	Aspect	6
2.4	Star Slots	9
2.4.1	Slot 3	9
2.4.2	Slot 4	10
2.4.3	Slot 5	11
2.4.4	Slot 6	12
2.4.5	Slot 7	13
2.5	FID Slots	14
2.5.1	Slot 0	14
2.5.2	Slot 1	15
2.5.3	Slot 2	16
3	Point Sources	17
A	Summary	18
A.1	Status	18
A.2	Comments	18

1 Front

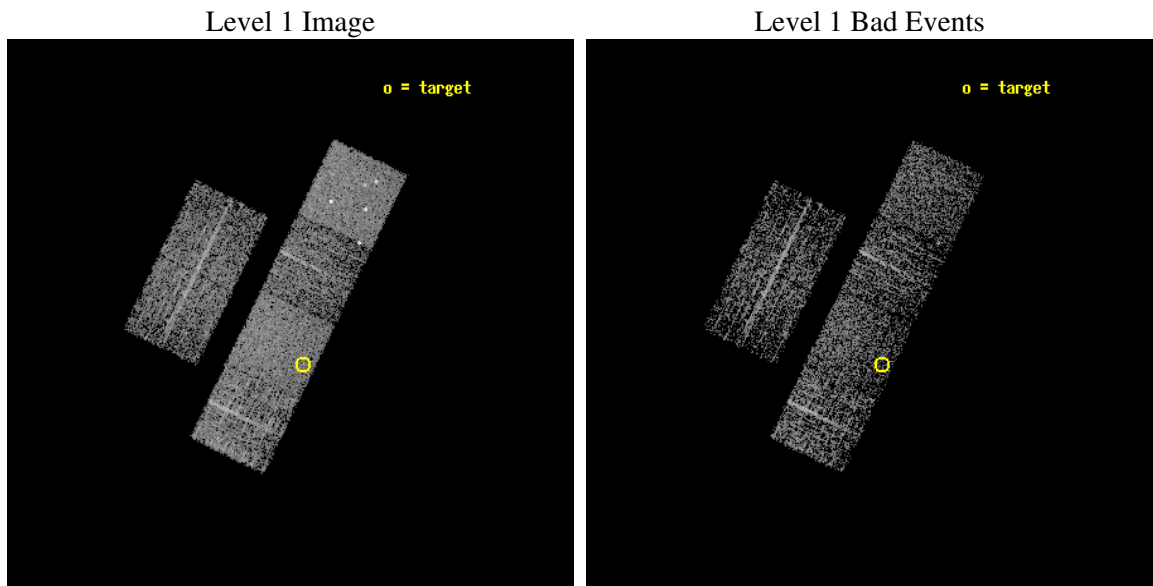
seq_num	700770
obs_id	4091
title	ARE ALL NARROW-LINE SEYFERT 1S ULTRASOFT X-RAY SOURCES?
observer	Prof RICHARD POGGE
object	SDSS J143030.22-001115.1
dtcycle	0
cycle	P
ra_targ	217.625833
dec_targ	-0.187528
ra_nom	217.64874456748
dec_nom	-0.11648394034087
roll_nom	115.93966090174
revision	3
ontime	1971.1999926567
livetime	1946.2394714356
ontime2	1971.1999926567
ontime3	1971.1999926567
ontime5	1971.1999926567
ontime6	1971.1999926567
ontime7	1971.1999926567
ontime8	1971.1999926567
l2events	18195



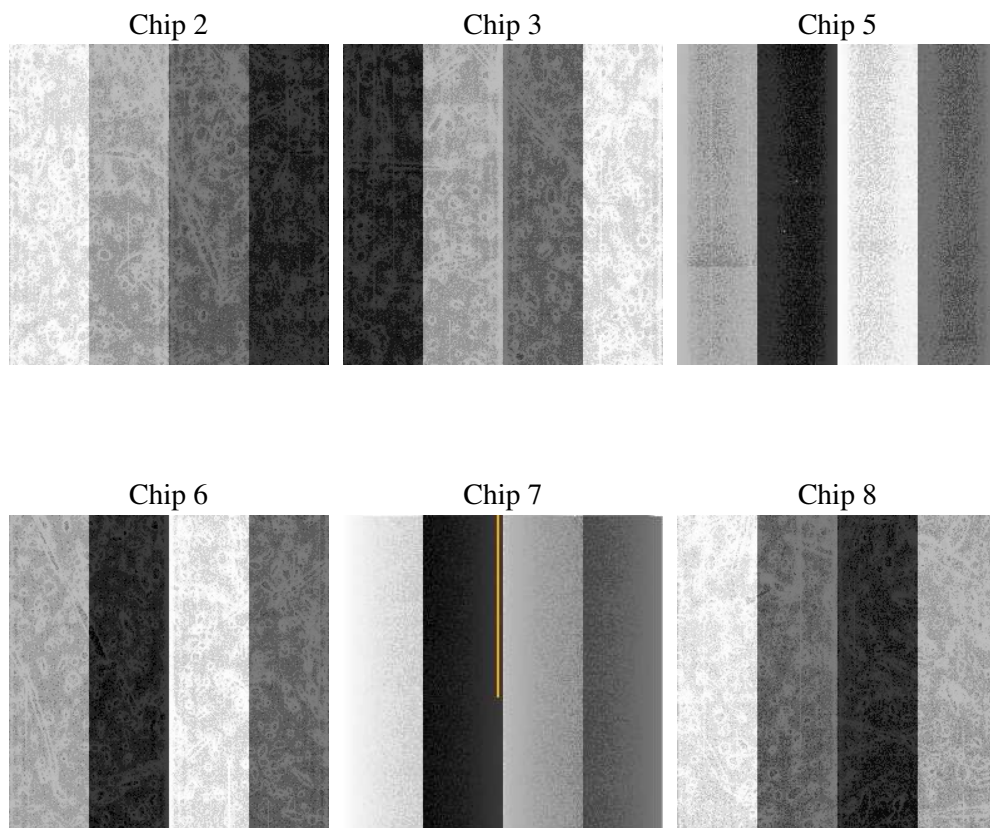
2 OBI

2.1 OBI

2.1.1 Images



2.1.2 Bias



2.1.3 Parameters

obi_num	0
ascdsver	7.6.8.1
caldsver	3.2.2
date	2006-08-04T16:20:48
revision	3

sched_exp_time	2007.000000
ontime	1973.7744934559
ontime2	1973.7744735479
ontime3	1973.7744735479
ontime5	1973.7744735479
ontime6	1973.7744735479
ontime7	1973.7744934559
ontime8	1973.7744735479
l1events	83266

2.1.4 Events

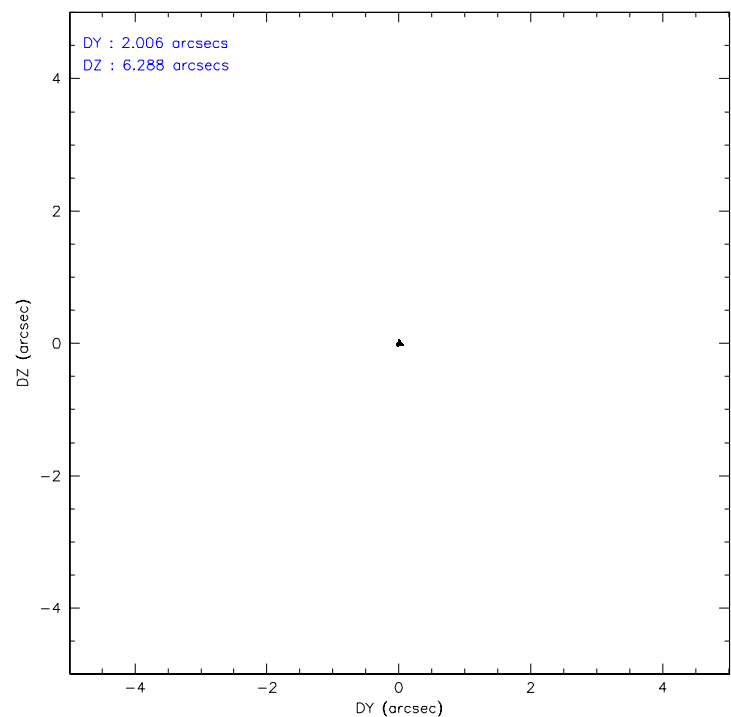
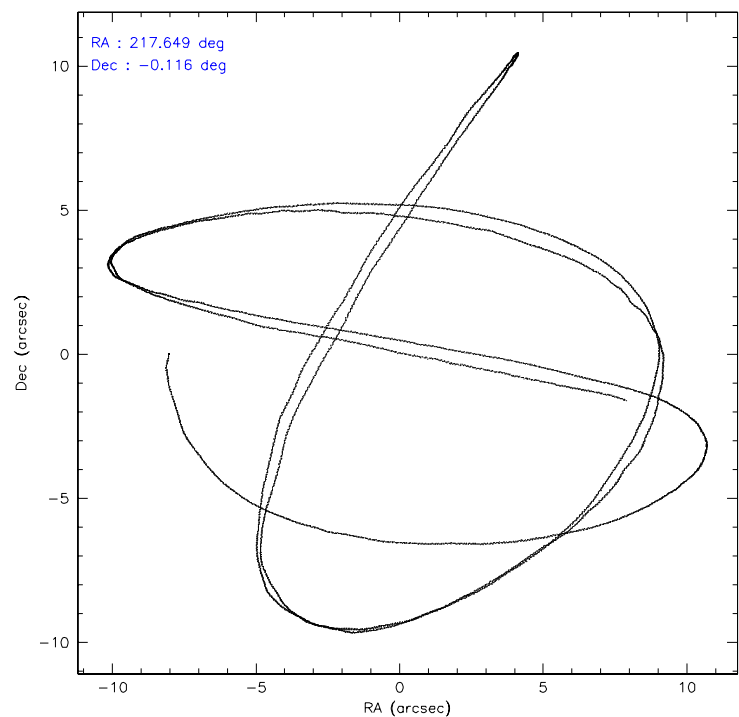
	ccd 2	ccd 3	ccd 5	ccd 6	ccd 7	ccd 8
level 1 events	11081	11099	18498	11019	15861	15708
rejected events	9708	9724	9583	9618	9767	12358
rejected %	87%	87%	51%	87%	61%	78%

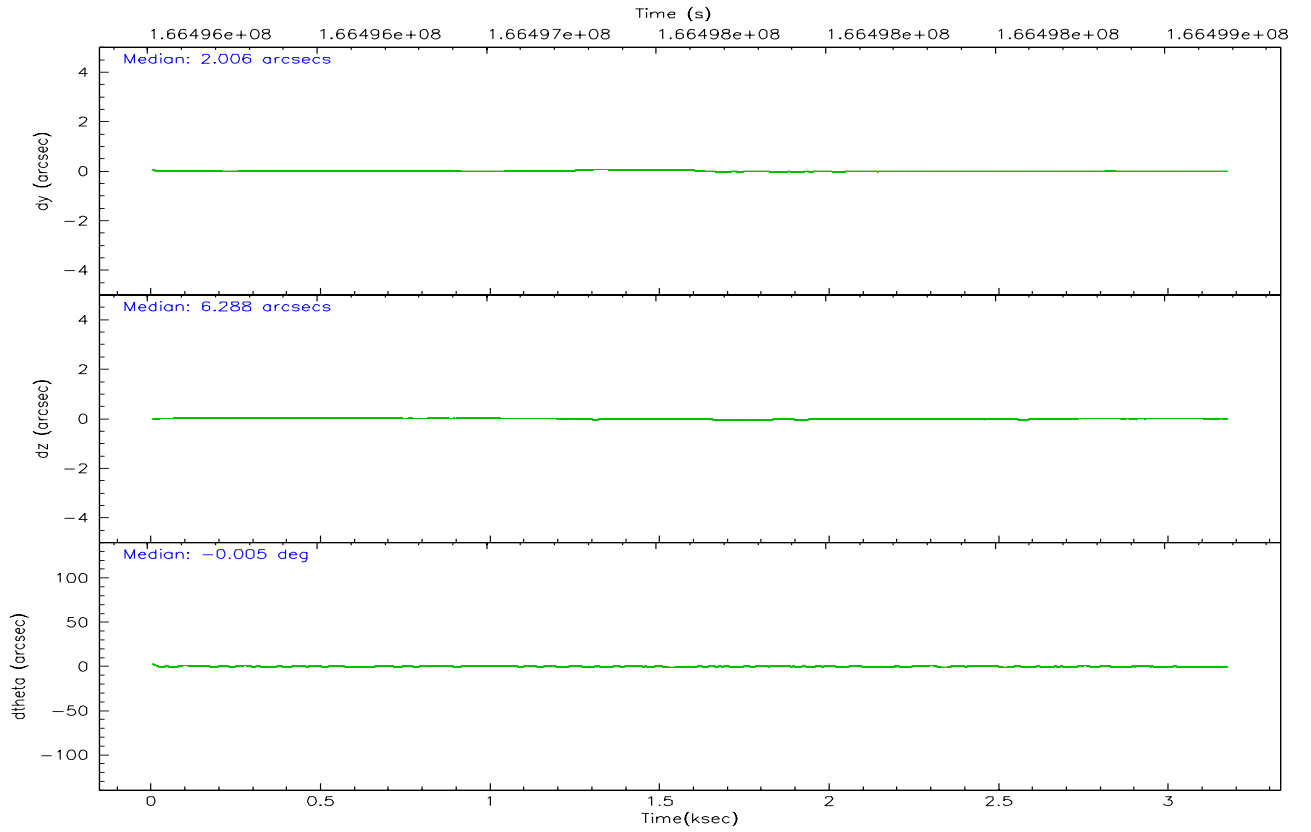
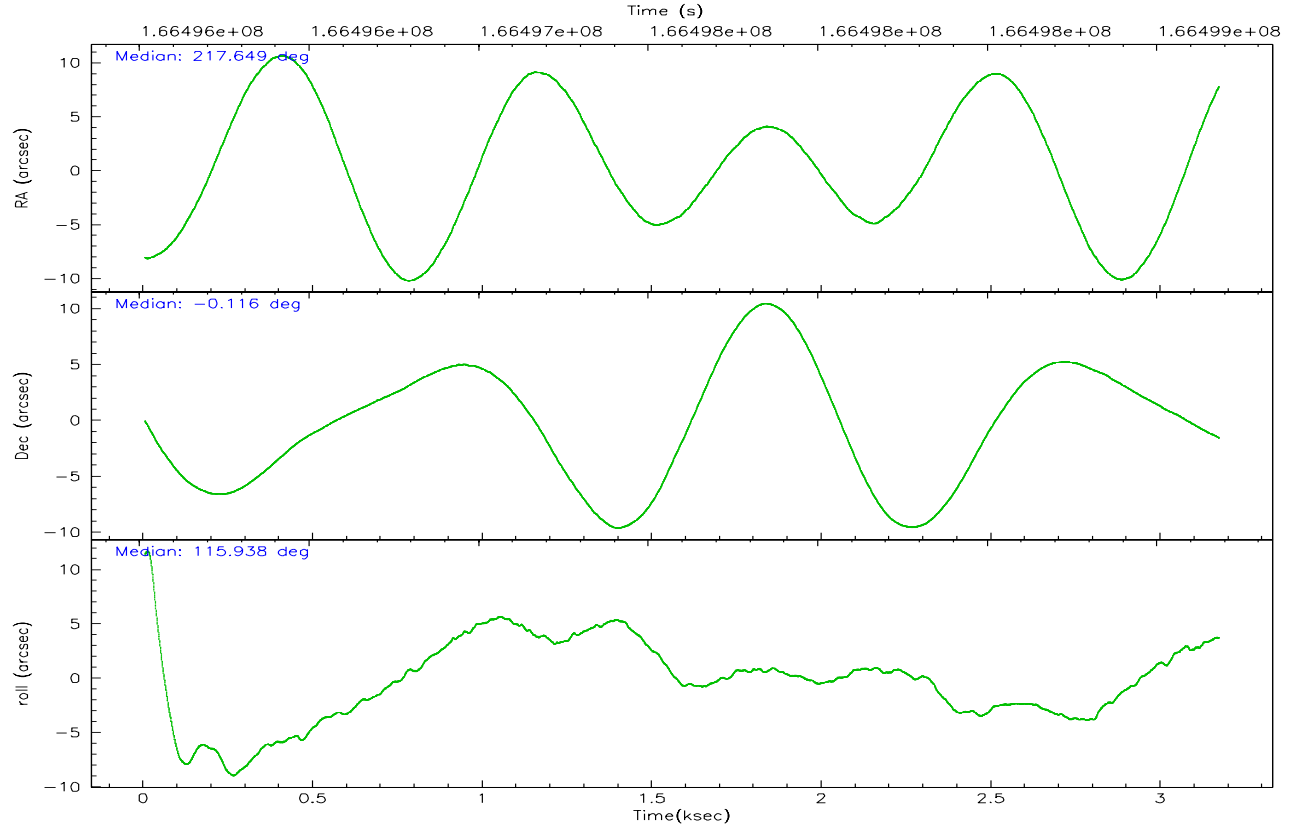
	ccd 2	ccd 3	ccd 5	ccd 6	ccd 7	ccd 8
grade 0 events	603	579	1494	554	364	1021
	5%	5%	8%	5%	2%	6%
grade 1 events	5	4	28	3	8	6
	0%	0%	0%	0%	0%	0%
grade 2 events	254	278	2495	295	1538	754
	2%	2%	13%	2%	9%	4%
grade 3 events	134	145	216	156	325	355
	1%	1%	1%	1%	2%	2%
grade 4 events	139	133	197	117	290	368
	1%	1%	1%	1%	1%	2%
grade 5 events	449	487	863	556	1017	695
	4%	4%	4%	5%	6%	4%
grade 6 events	245	242	4526	284	3586	854
	2%	2%	24%	2%	22%	5%
grade 7 events	9252	9231	8679	9054	8733	11655
	83%	83%	46%	82%	55%	74%

2.2 Compared Parameters

Parameter	Planned	Actual	Parameter	Planned	Actual
Instrument	ACIS	ACIS	Obspar format version number	6	6
Detector	ACIS-235678	ACIS-235678	Obspar file type	PREDICTED	ACTUAL
Grating	NONE	NONE	Obspar update status	NONE	UPDATED
Data mode	FAINT	FAINT	On-chip summing requested	N	N
Observation mode	POINTING	POINTING	Subarray requested	NONE	NONE
Pointing RA	217.671626	217.6487445674829	Alternating exposures requested	N	N
Pointing Dec	-0.131358	-0.1164839403408667	Primary exposure time	0.000000	3.2
Pointing Roll	115.783091	115.9396609017434			
SIM focus pos (mm)	-0.684267	-0.6828225247311905			
SIM defocus (mm)	0	0.001444936568705701			
SIM translation stage pos (mm)	-190.132523	-190.1425803651734			
SIM translation stage offset (mm)	0	0.01005778216563158			
Observation start time	166497184.184000	166495732.54658			
Observation start date	2003-04-12T01:12:00	2003-04-12T00:48:52			
Observation end time	166499191.184000	166499767.97175			
Observation end date	2003-04-12T01:45:27	2003-04-12T01:56:07			
Read mode	TIMED	TIMED			

2.3 Aspect



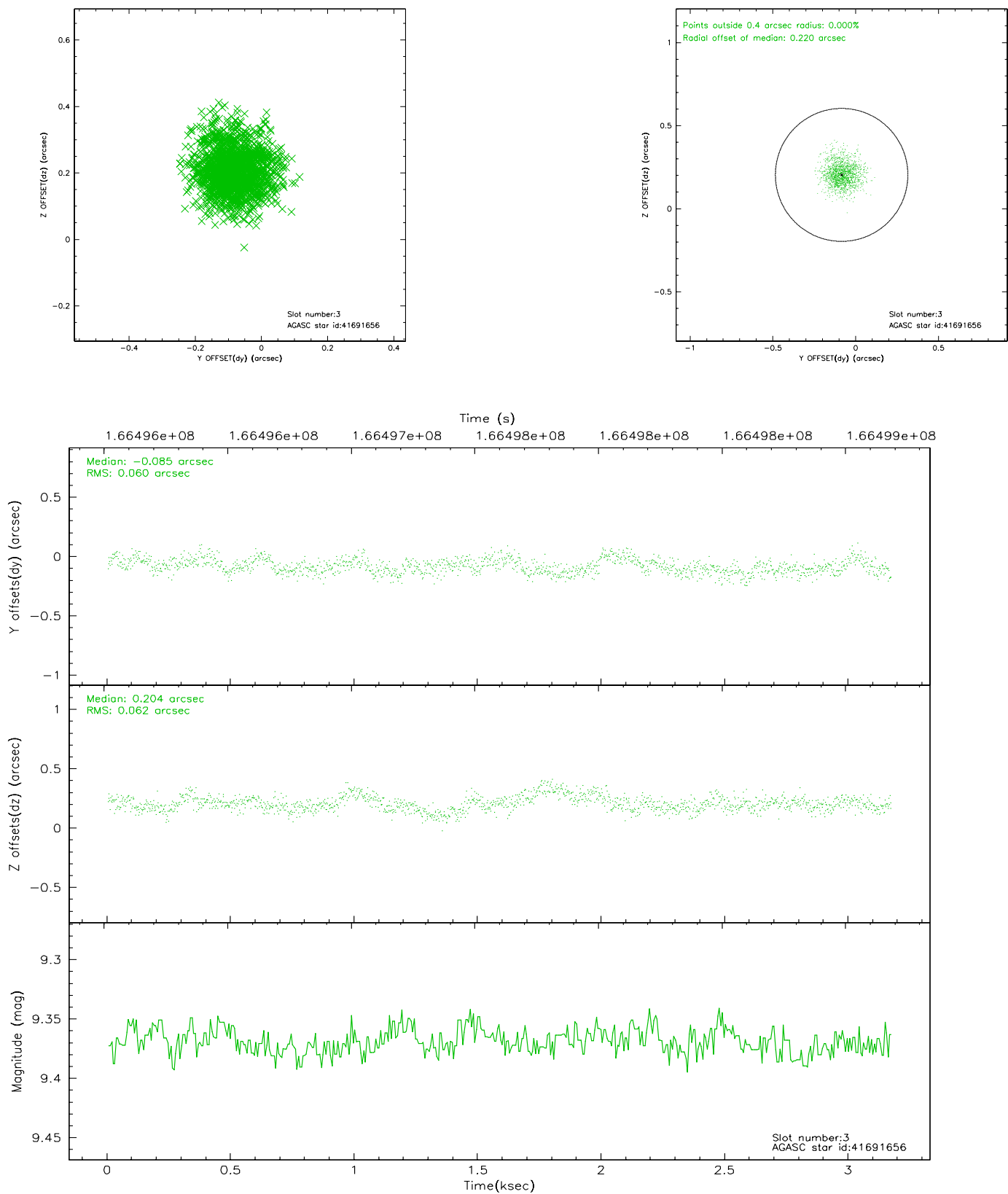


Slot Statistics

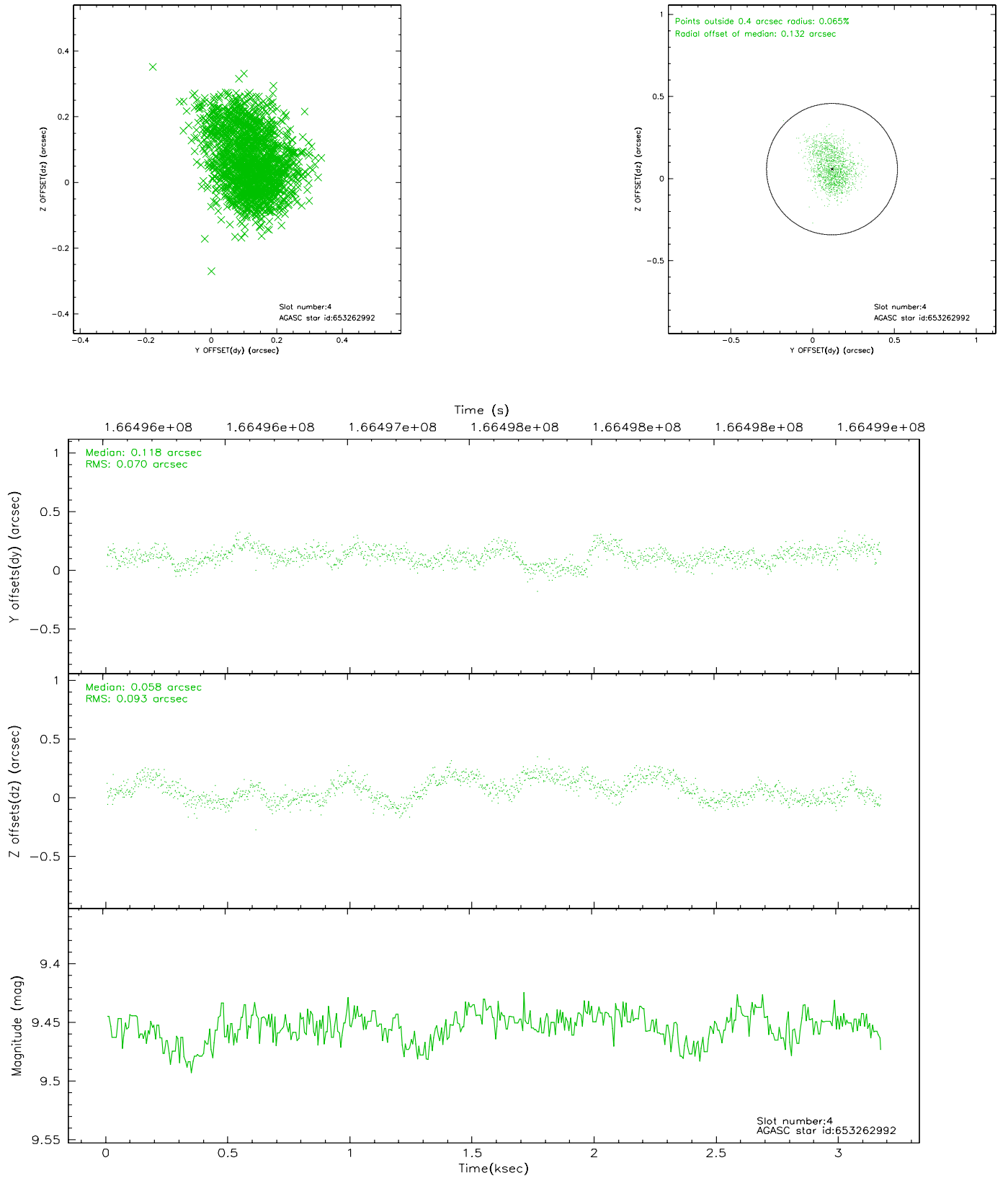
slot	status	id	mag	n_pts	med_dy	med_dz	dr1	dr2	ra	dec	mean_y	mean_z
0	FID	ACIS-S-2	7.11	774	-0.039	0.029	0.006	0.010	0.000000	0.000000	-754.63	-1727.37
1	FID	ACIS-S-4	7.21	773	-0.042	0.011	0.005	0.009	0.000000	0.000000	2157.70	179.08
2	FID	ACIS-S-5	7.24	774	0.050	-0.031	0.006	0.011	0.000000	0.000000	-1804.83	174.92
3	GUIDE	41691656	9.37	1547	-0.085	0.204	0.092	0.152	217.292597	0.121043	1411.87	833.27
4	GUIDE	653262992	9.45	1546	0.118	0.058	0.126	0.194	217.798232	-0.237463	-540.86	-244.17
5	BAD	41691352	10.72	1397	-0.169	-0.386	0.268	0.441	217.091450	0.307914	2332.01	1192.62
6	GUIDE	653263832	9.55	773	0.235	0.098	0.111	0.181	218.308640	-0.026390	-653.64	-2228.16
7	GUIDE	41692488	9.50	773	0.017	0.096	0.147	0.219	217.394544	0.265381	1719.35	273.83

2.4 Star Slots

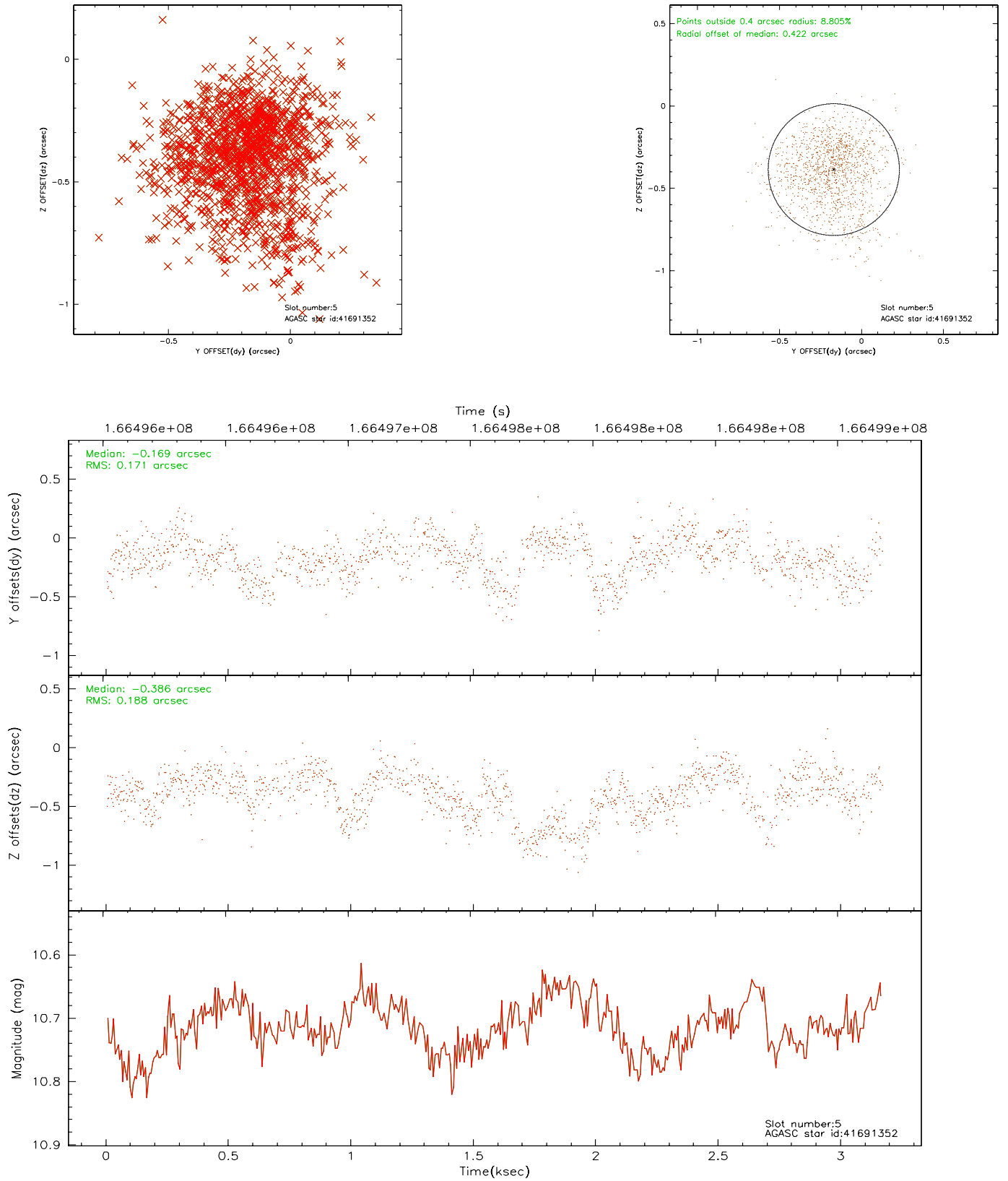
2.4.1 Slot 3



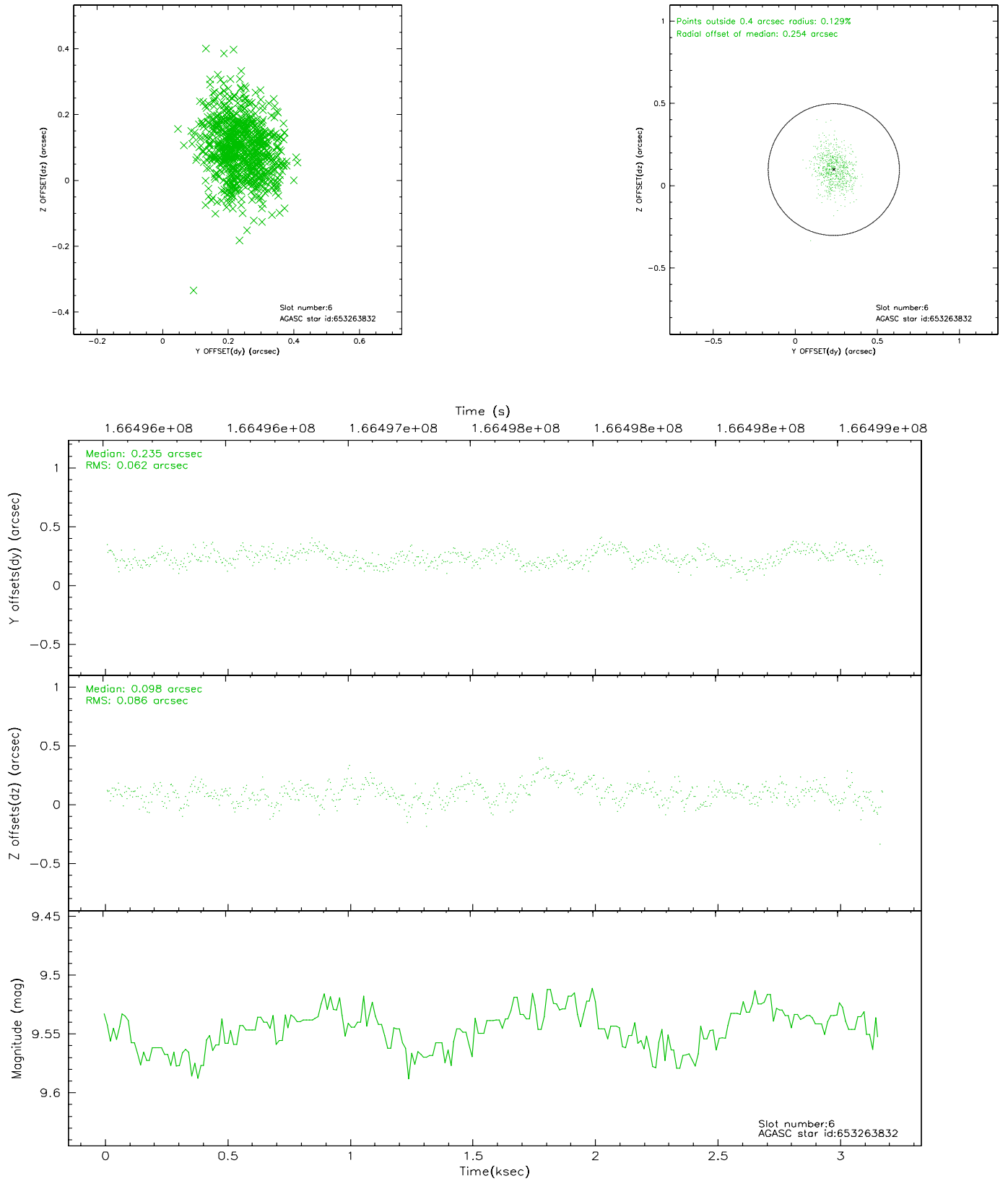
2.4.2 Slot 4



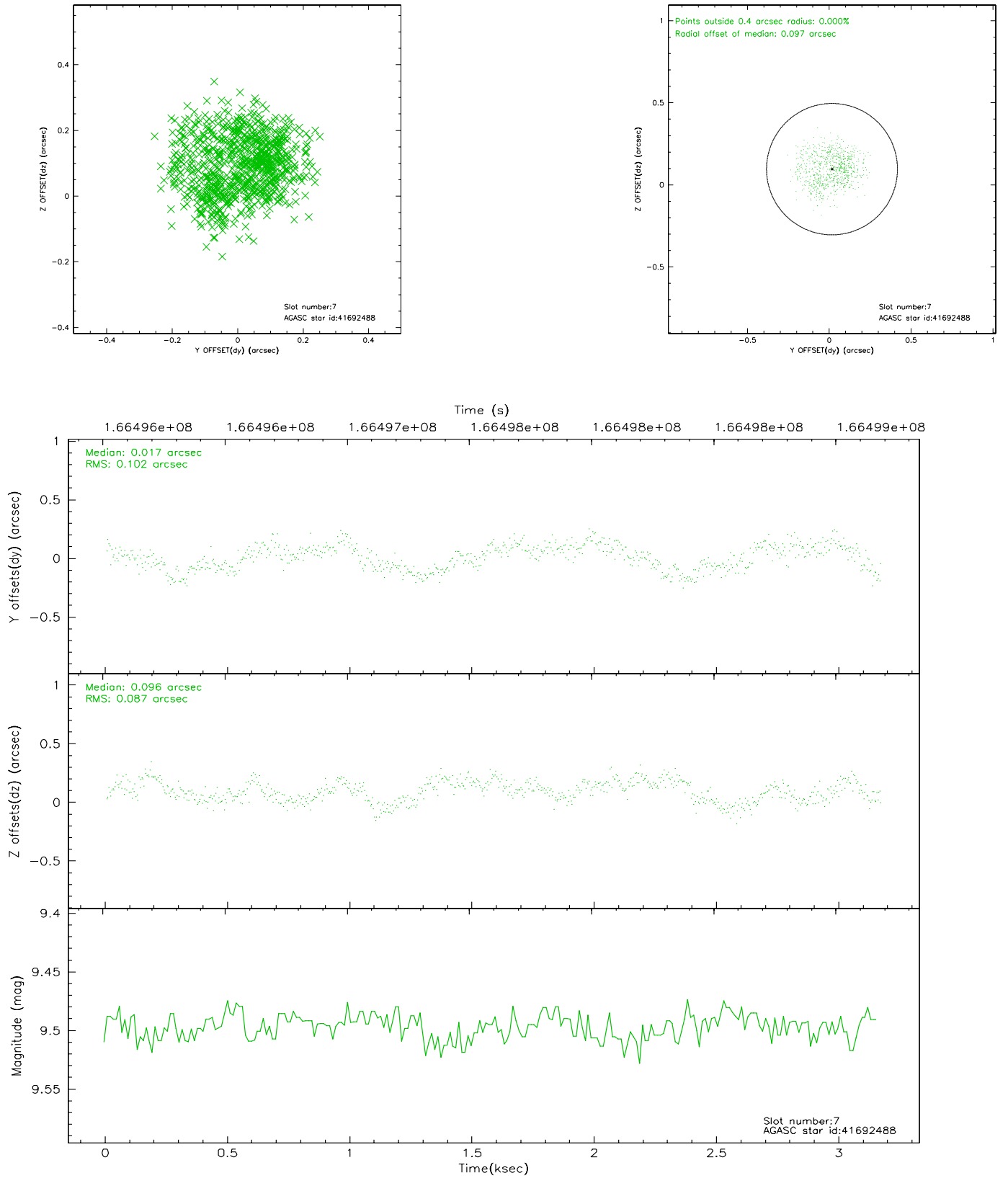
2.4.3 Slot 5



2.4.4 Slot 6

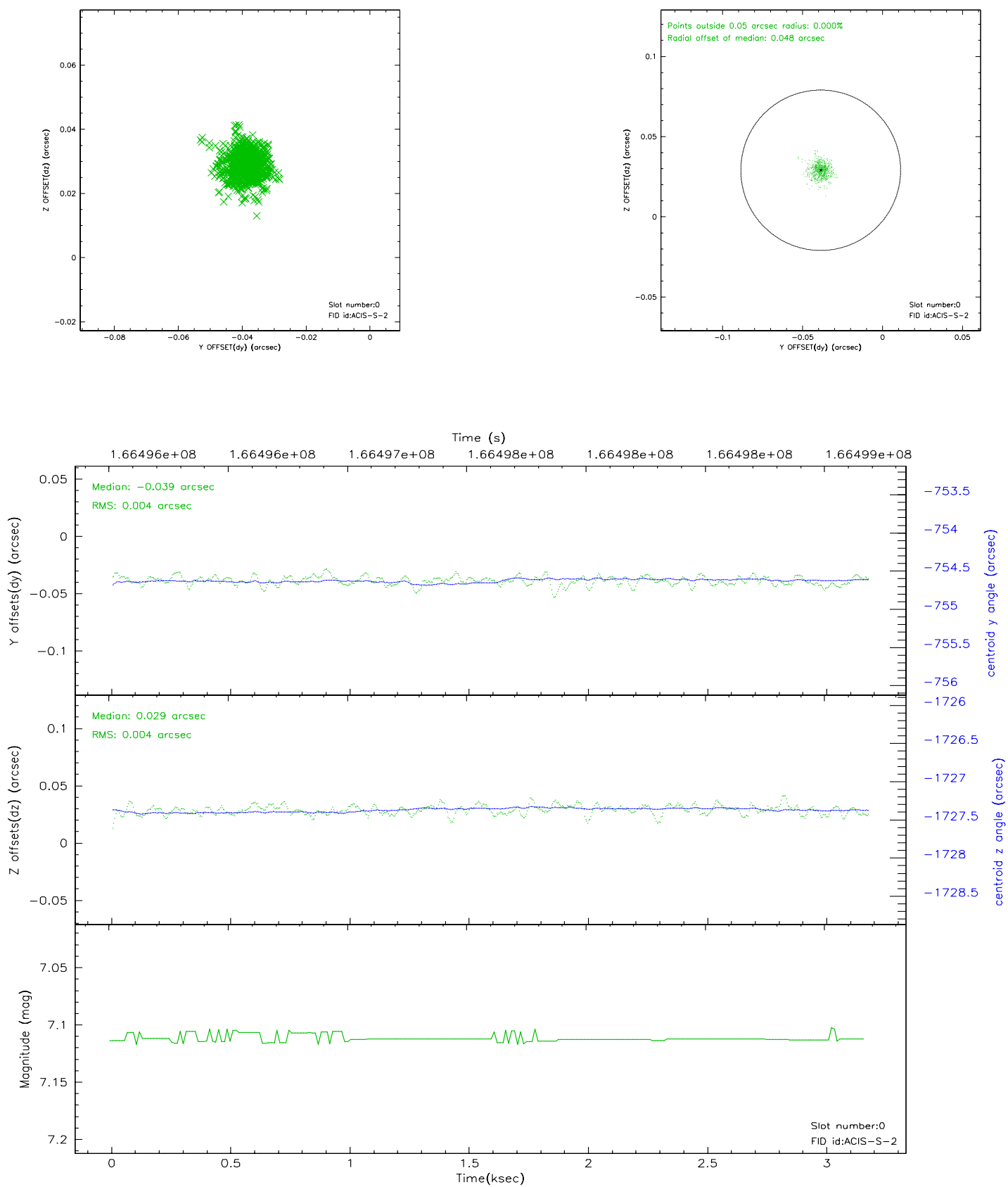


2.4.5 Slot 7

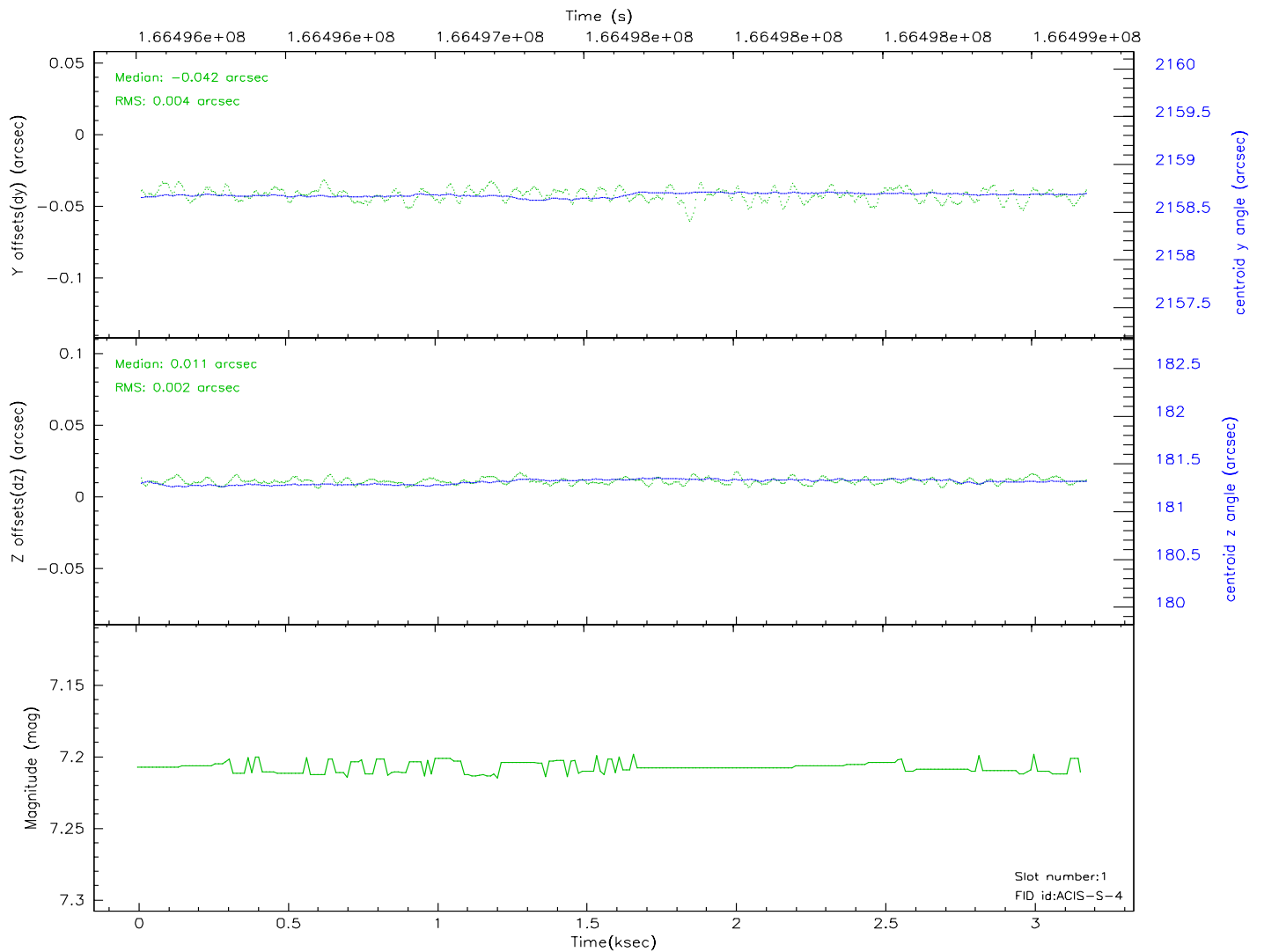
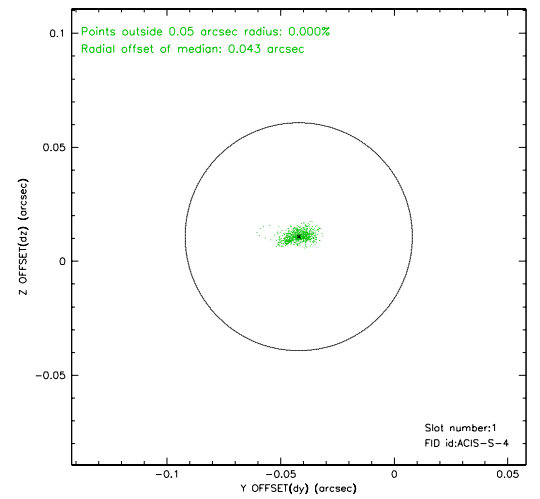
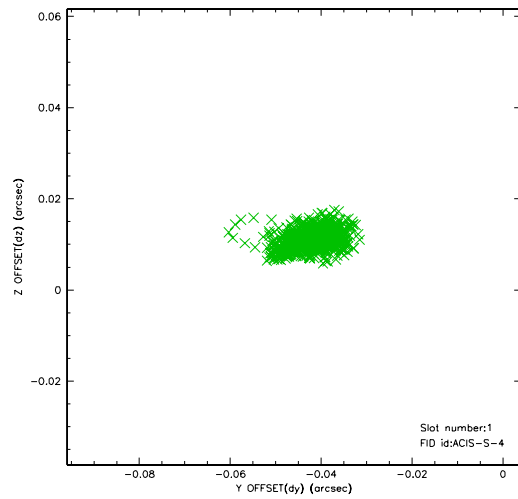


2.5 FID Slots

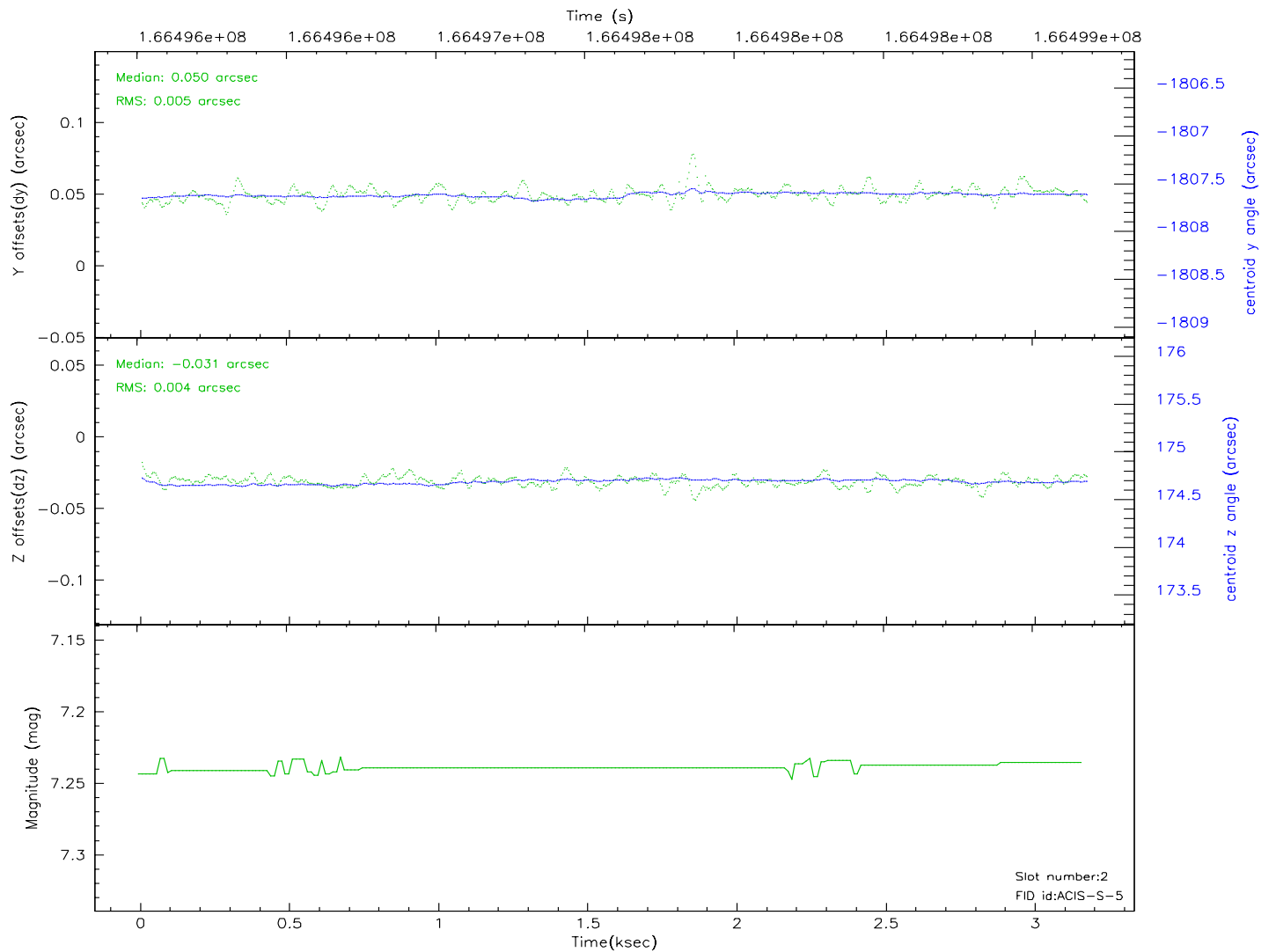
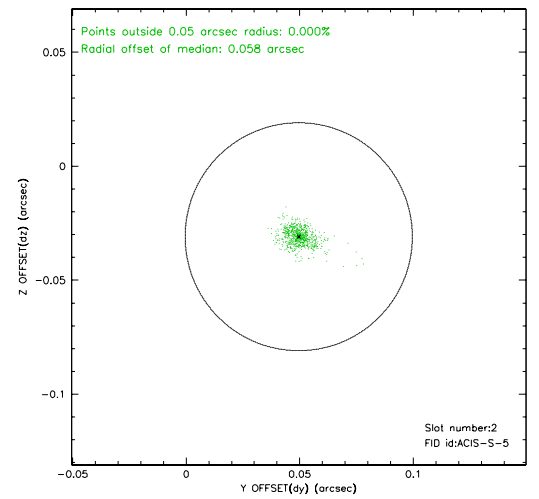
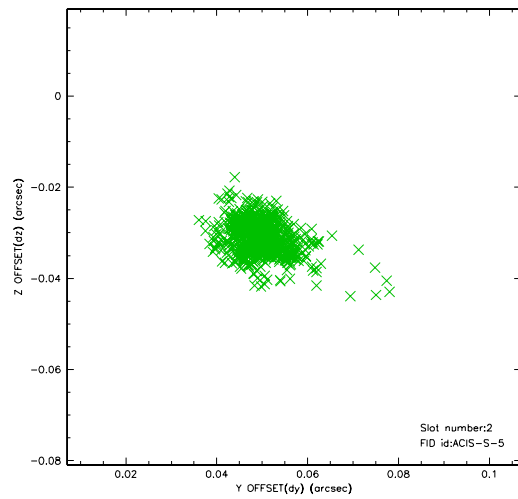
2.5.1 Slot 0



2.5.2 Slot 1



2.5.3 Slot 2



3 Point Sources

18.64 arcmin



A Summary

A.1 Status

V&V Scientist	Beth Sundheim
V&V Date (YYYY-MM-DD)	2006.08.04
V&V Edition	1
V&V Disposition and Status	OK
V&V Charge Time	1.971

A.2 Comments

Slot 5 was excluded from aspect solution.