

V&V Reference Report

L2 ASCDS Version : 8.4.5

Observation 4089 - L2 Version 4
Chandra X-Ray Center

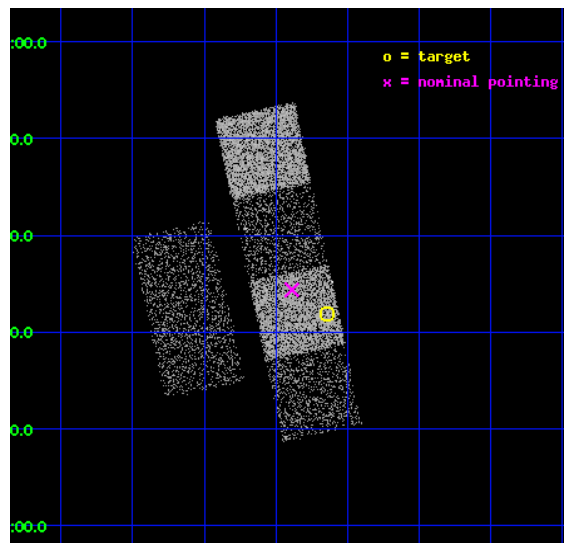
L2 Processing Date : Oct 24 2012

Contents

1	Front	2
2	OBI	3
2.1	OBI	3
2.1.1	Images	3
2.1.2	Bias	3
2.1.3	Parameters	4
2.1.4	Events	4
2.2	Compared Parameters	5
2.3	Aspect	6
2.4	Star Slots	9
2.4.1	Slot 3	9
2.4.2	Slot 4	10
2.4.3	Slot 5	11
2.4.4	Slot 6	12
2.4.5	Slot 7	13
2.5	FID Slots	14
2.5.1	Slot 0	14
2.5.2	Slot 1	15
2.5.3	Slot 2	16
A	Summary	17
A.1	Status	17
A.2	Comments	17

1 Front

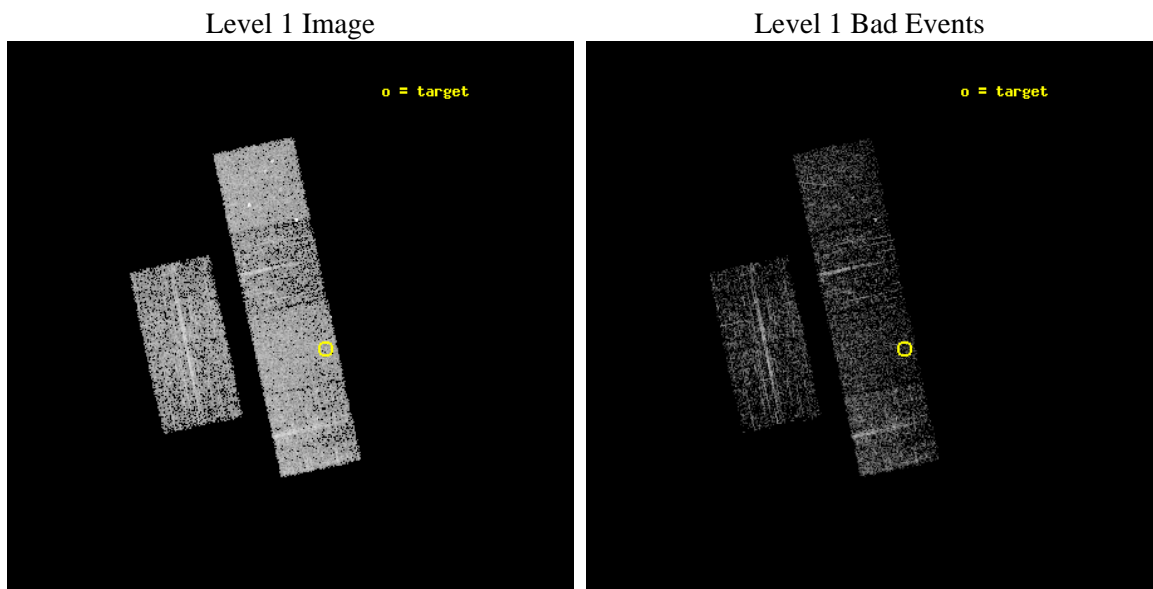
seq_num	700768	Sequence number
obs_id	4089	Observation id
title	ARE ALL NARROW-LINE SEYFERT 1S ULTRASOFT X-RAY SOURCES?	Proposal t
observer	Prof RICHARD POGGE	Principal investigator
object	SDSS J131108.48+003151.8	Source name
dtcycle	0	
cycle	P	events from which exps? Prim/Second/Both
ra_targ	197.785417	Observer's specified target RA [deg]
dec_targ	0.531056	Observer's specified target Dec [deg]
ra_nom	197.84725687881	Nominal RA [deg]
dec_nom	0.57277490608446	Nominal Dec [deg]
roll_nom	77.96572596292	Nominal Roll [deg]
revision	4	Processing version of data
ontime	1753.5999934673	Sum of GTIs [s]
livetime	1731.3948544589	Livetime [s]
ontime2	1753.5999934673	Sum of GTIs [s]
ontime3	1753.5999934673	Sum of GTIs [s]
ontime5	1753.5999934673	Sum of GTIs [s]
ontime6	1753.5999934673	Sum of GTIs [s]
ontime7	1753.5999934673	Sum of GTIs [s]
ontime8	1750.3590132296	Sum of GTIs [s]
l2events	17603	Number of level 2 events



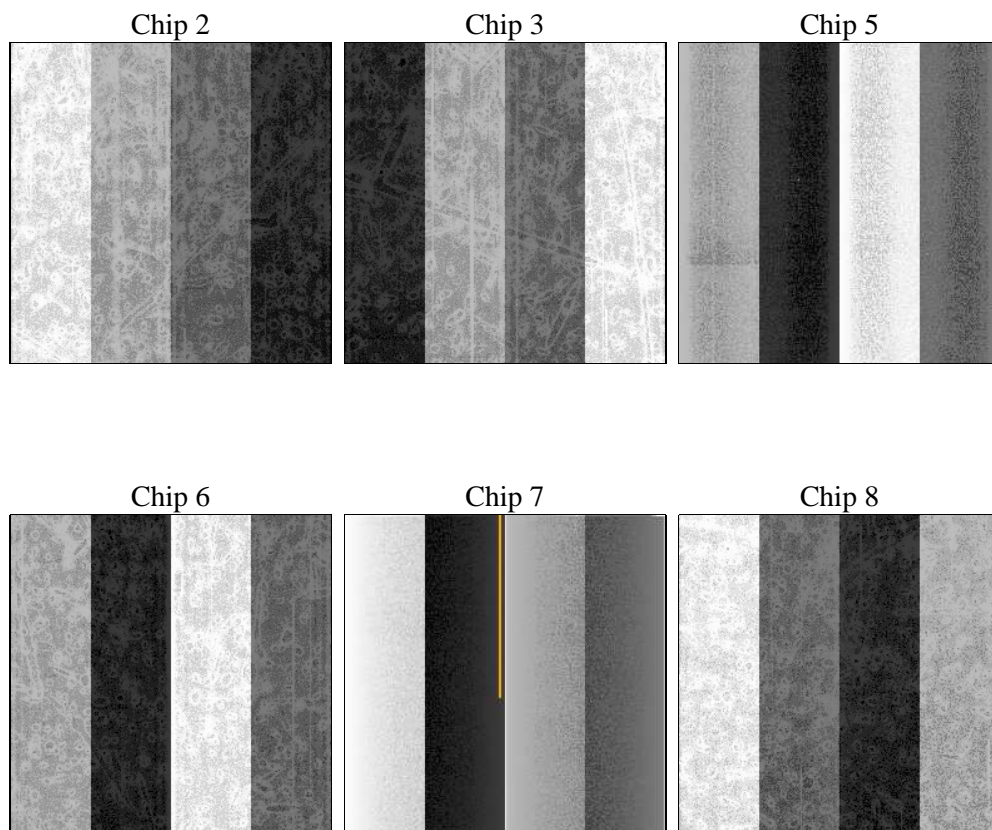
2 OBI

2.1 OBI

2.1.1 Images



2.1.2 Bias



2.1.3 Parameters

obi_num	1	Obi number	sched_exp_time	2000.000000	[s] Scheduled observation exposure time
ascdsver	8.4.5	Processing system revision	ontime	1753.5999934673	Sum of GTIs [s]
caldsver	4.5.2	 	ontime2	1753.5999934673	Sum of GTIs [s]
date	2012-10-24T13:34:27	Date and time of file creation	ontime3	1753.5999934673	Sum of GTIs [s]
revision	4	Processing version of data	ontime5	1753.5999934673	Sum of GTIs [s]
			ontime6	1753.5999934673	Sum of GTIs [s]
			ontime7	1753.5999934673	Sum of GTIs [s]
			ontime8	1750.3590132296	Sum of GTIs [s]
			l1events	83614	Number of level 1 events

2.1.4 Events

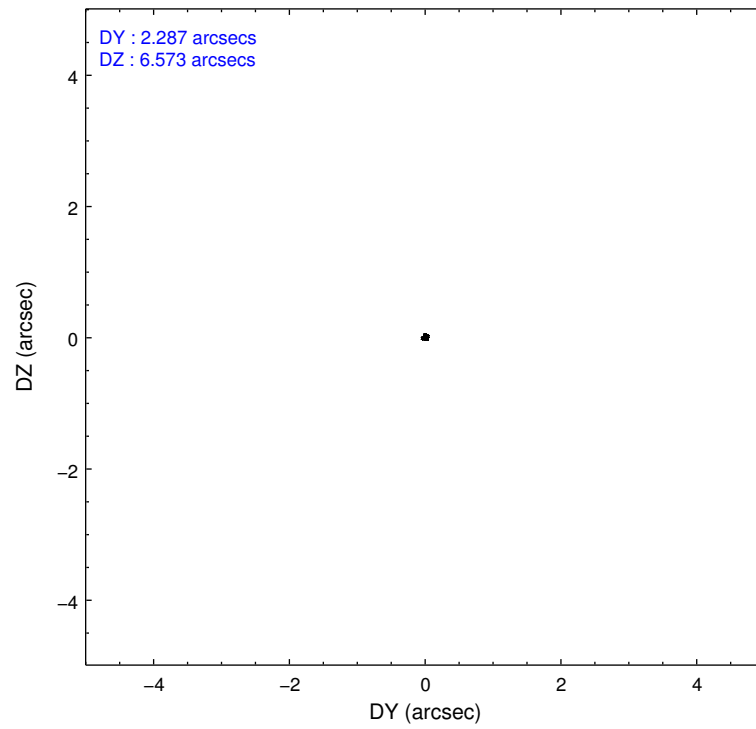
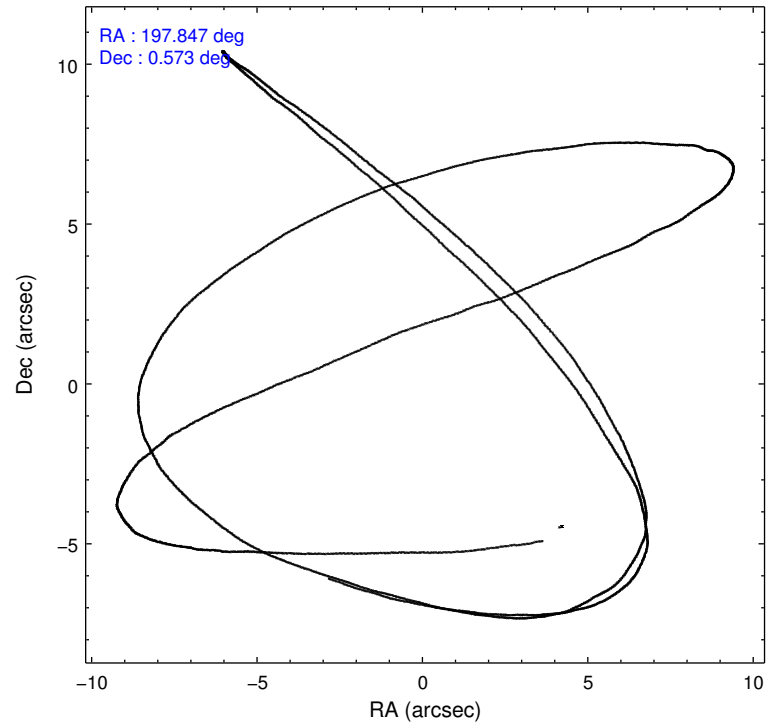
	ccd 2	ccd 3	ccd 5	ccd 6	ccd 7	ccd 8
level 1 events	11970	11492	17183	10959	15243	16767
rejected events	10670	10264	9282	9626	8954	14145
rejected %	89%	89%	54%	87%	58%	84%

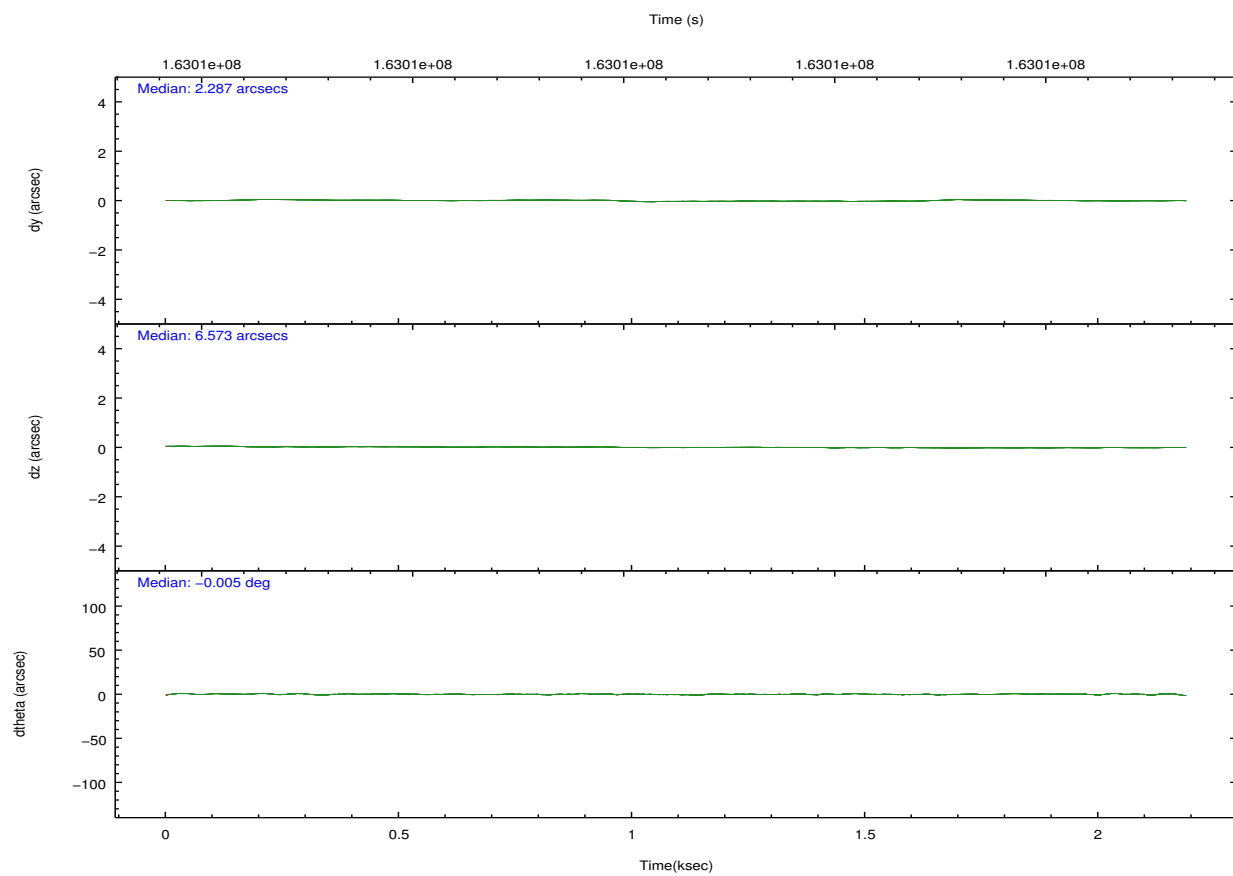
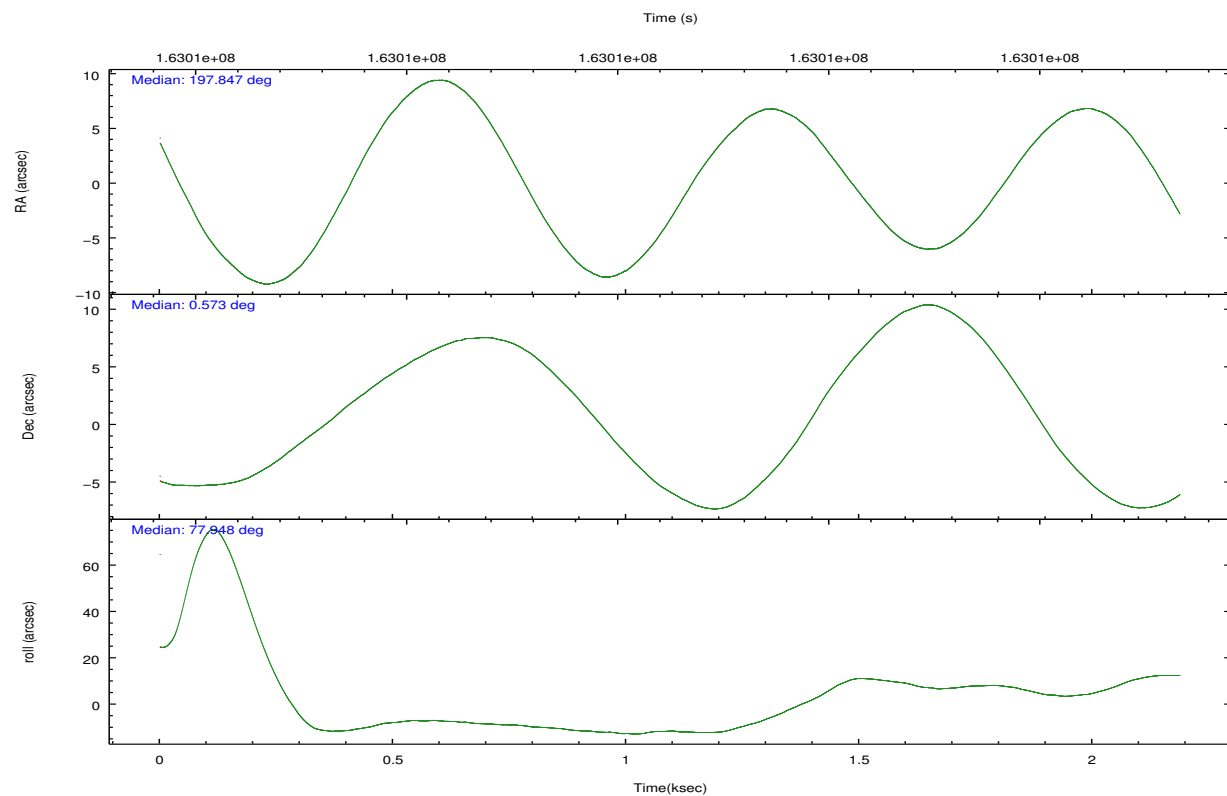
	ccd 2	ccd 3	ccd 5	ccd 6	ccd 7	ccd 8
grade 0 events	577	561	945	554	608	778
	4%	4%	5%	5%	3%	4%
grade 1 events	6	7	45	6	12	20
	0%	0%	0%	0%	0%	0%
grade 2 events	244	232	2296	260	1314	600
	2%	2%	13%	2%	8%	3%
grade 3 events	132	122	333	136	552	301
	1%	1%	1%	1%	3%	1%
grade 4 events	128	117	335	121	504	273
	1%	1%	1%	1%	3%	1%
grade 5 events	455	494	1285	475	1471	574
	3%	4%	7%	4%	9%	3%
grade 6 events	220	200	4004	263	3320	705
	1%	1%	23%	2%	21%	4%
grade 7 events	10208	9759	7940	9144	7462	13516
	85%	84%	46%	83%	48%	80%

2.2 Compared Parameters

Parameter	Planned	Actual	Parameter	Planned	Actual
Instrument	ACIS	ACIS	Obspar format version number	7	7
Detector	ACIS-235678	ACIS-235678	Obspar file type	PREDICTED	ACTUAL
Grating	NONE	NONE	Obspar update status	NONE	UPDATED
Data mode	FAINT	FAINT	Number of optional ACIS chips dropped	0	0
Observation mode	POINTING	POINTING	On-chip summing requested	N	N
[deg] Pointing RA	197.856084	197.8472568788126	Subarray requested	NONE	NONE
[deg] Pointing Dec	0.547167	0.5727749060844605	Alternating exposures requested	N	N
[deg] Pointing Roll	77.809350	77.96572596291951	[s] Primary exposure time	0.000000	3.2
[mm] SIM focus pos	-0.684267	-0.6828225247311905			
[mm] SIM defocus	0	0.001444936568705701			
[mm] SIM translation stage pos	-190.132523	-190.1425803651734			
[mm] SIM translation stage offset	0	0.01005778216563158			
[s] Observation start time (MET)	163010718.184000	163010276.27468			
Observation start date	2003-03-02T16:44:14	2003-03-02T16:37:56			
[s] Observation end time (MET)	163012718.184000	163013154.4748			
Observation end date	2003-03-02T17:17:34	2003-03-02T17:25:54			
Read mode	TIMED	TIMED			

2.3 Aspect



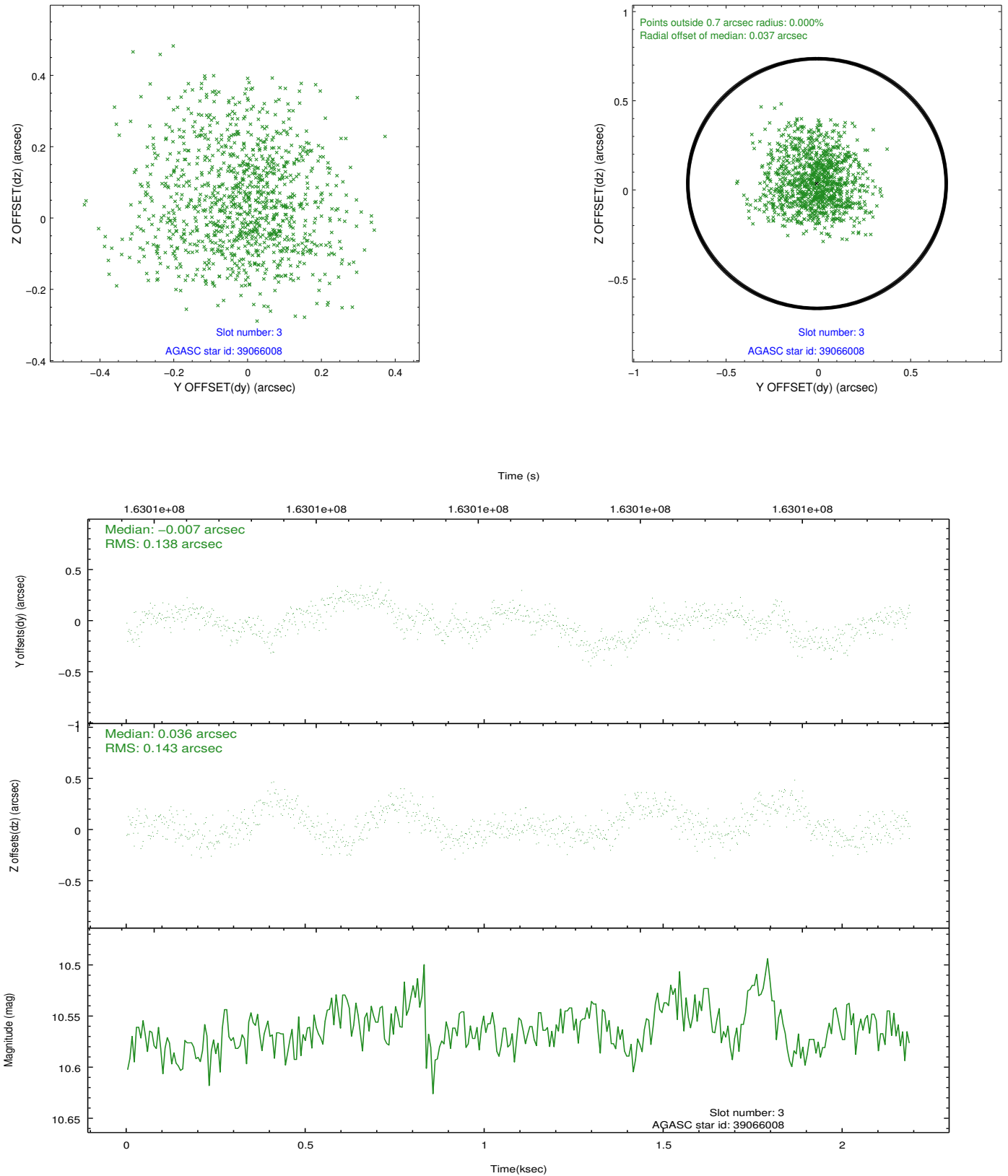


Slot Statistics

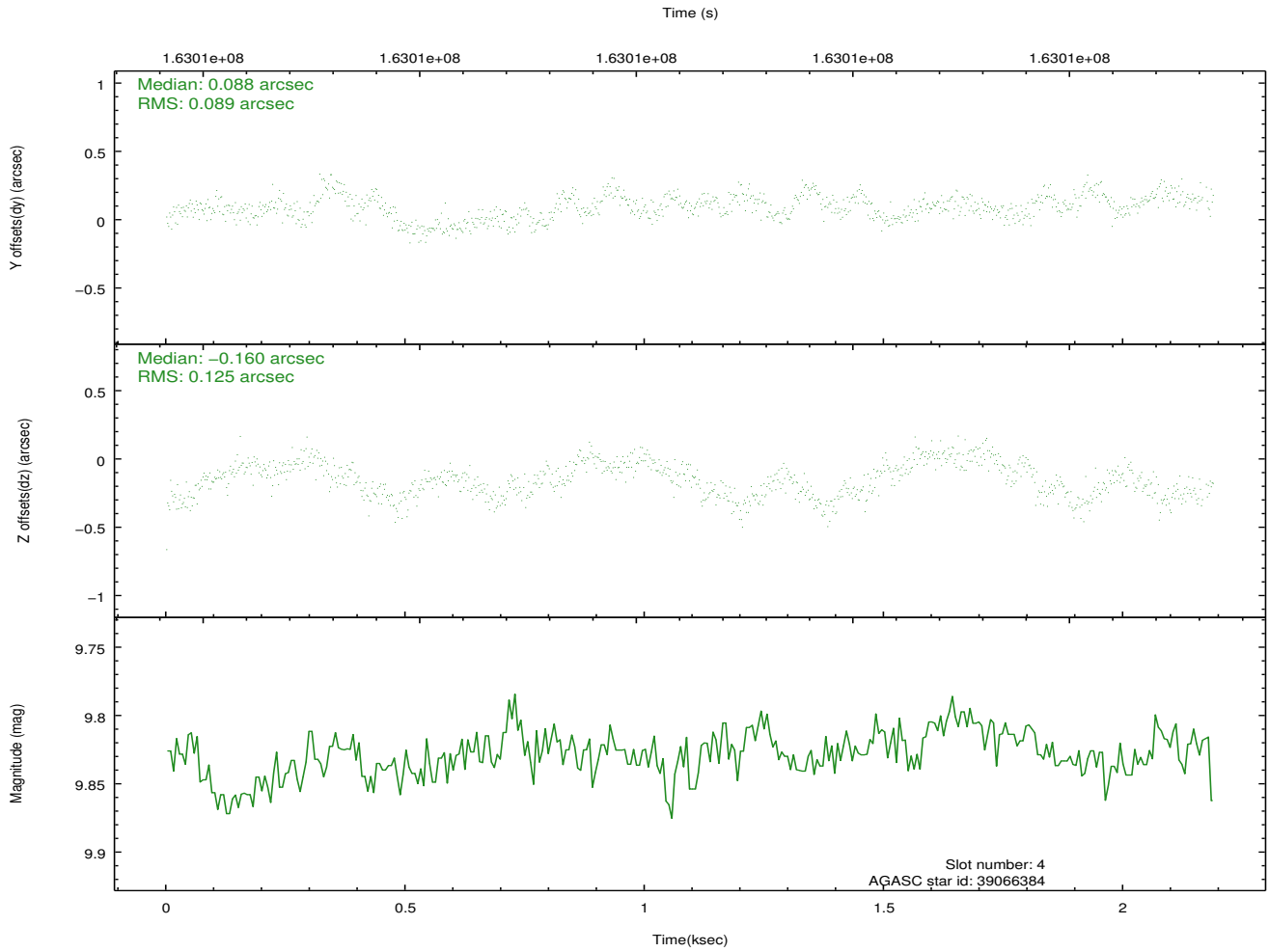
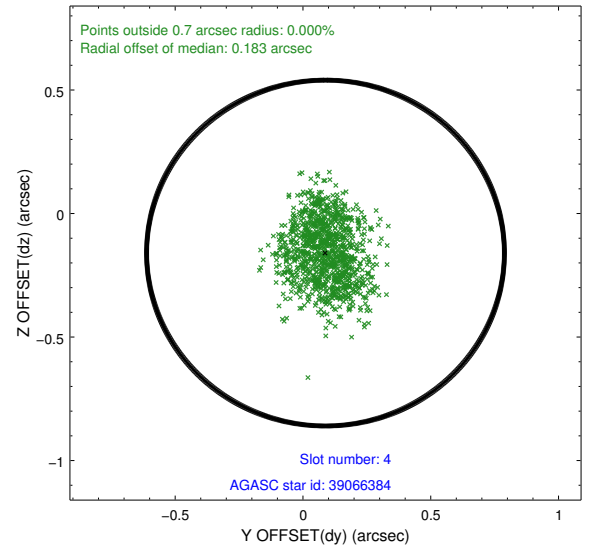
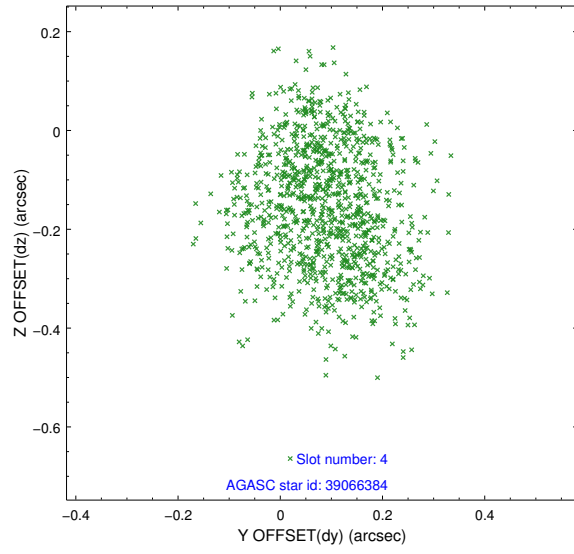
slot	status	id	mag	n_pts	med_dy	med_dz	dr1	dr2	ra	dec	mean_y	mean_z
0	FID	ACIS-S-2	7.11	534	-0.043	0.003	0.006	0.009	0.000000	0.000000	-754.92	-1727.69
1	FID	ACIS-S-4	7.21	534	-0.002	0.020	0.005	0.009	0.000000	0.000000	2157.02	177.79
2	FID	ACIS-S-5	7.24	534	0.014	-0.014	0.006	0.009	0.000000	0.000000	-1803.90	174.74
3	GUIDE	39066008	10.56	1065	-0.007	0.036	0.217	0.340	197.446837	0.858969	786.81	1676.78
4	GUIDE	39066384	9.83	1063	0.088	-0.160	0.168	0.251	197.255307	0.655946	-72.56	2197.33
5	GUIDE	39193952	10.04	1045	-0.069	-0.036	0.108	0.174	197.855382	1.078271	1868.82	408.66
6	GUIDE	39198040	10.12	1060	0.079	0.207	0.129	0.209	197.984957	0.836282	1118.35	-233.21
7	GUIDE	39194296	10.14	1040	-0.082	-0.063	0.163	0.247	197.857882	1.097548	1939.95	411.85

2.4 Star Slots

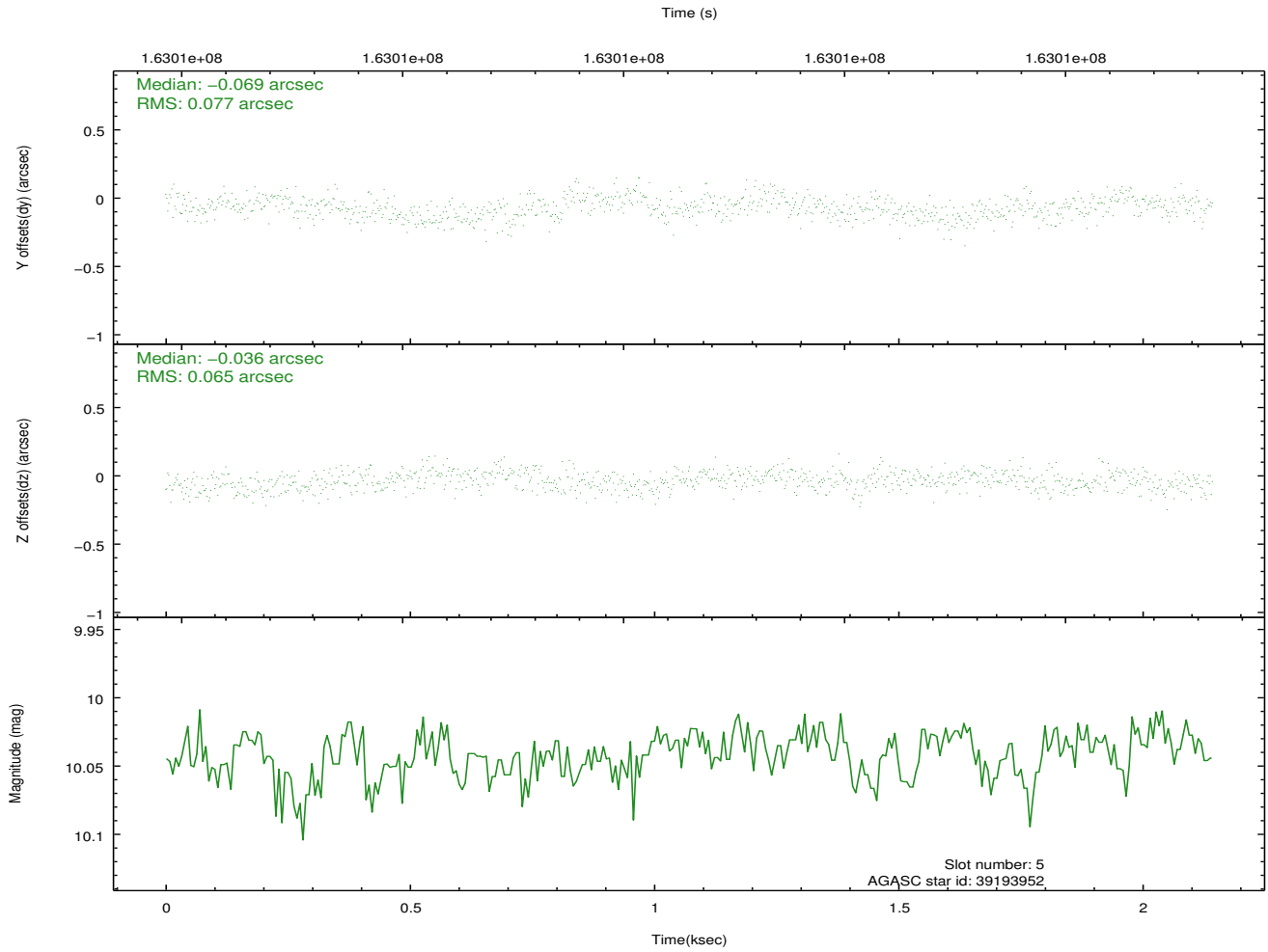
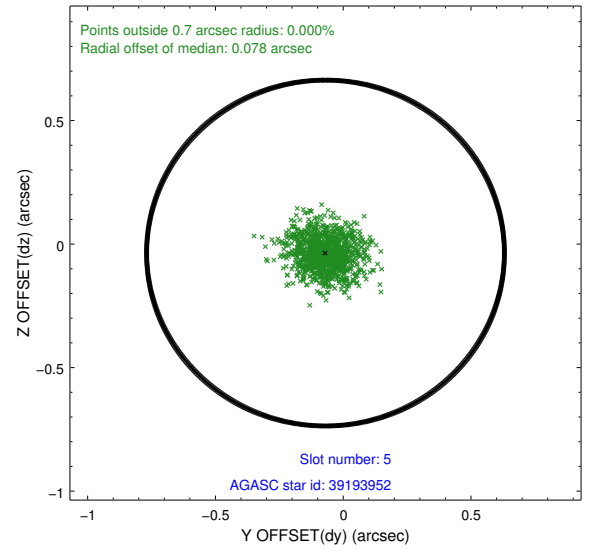
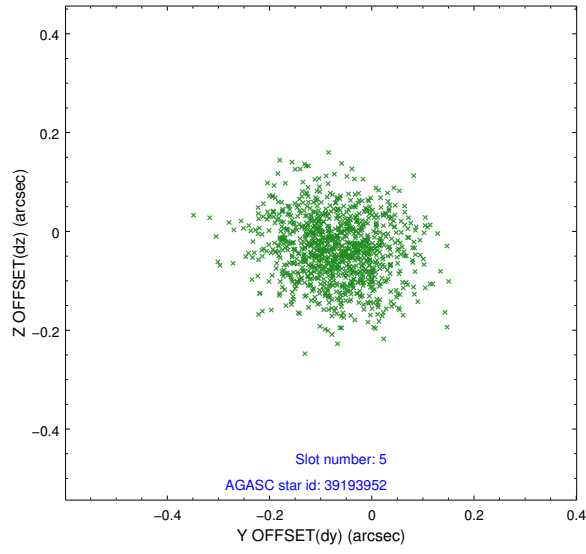
2.4.1 Slot 3



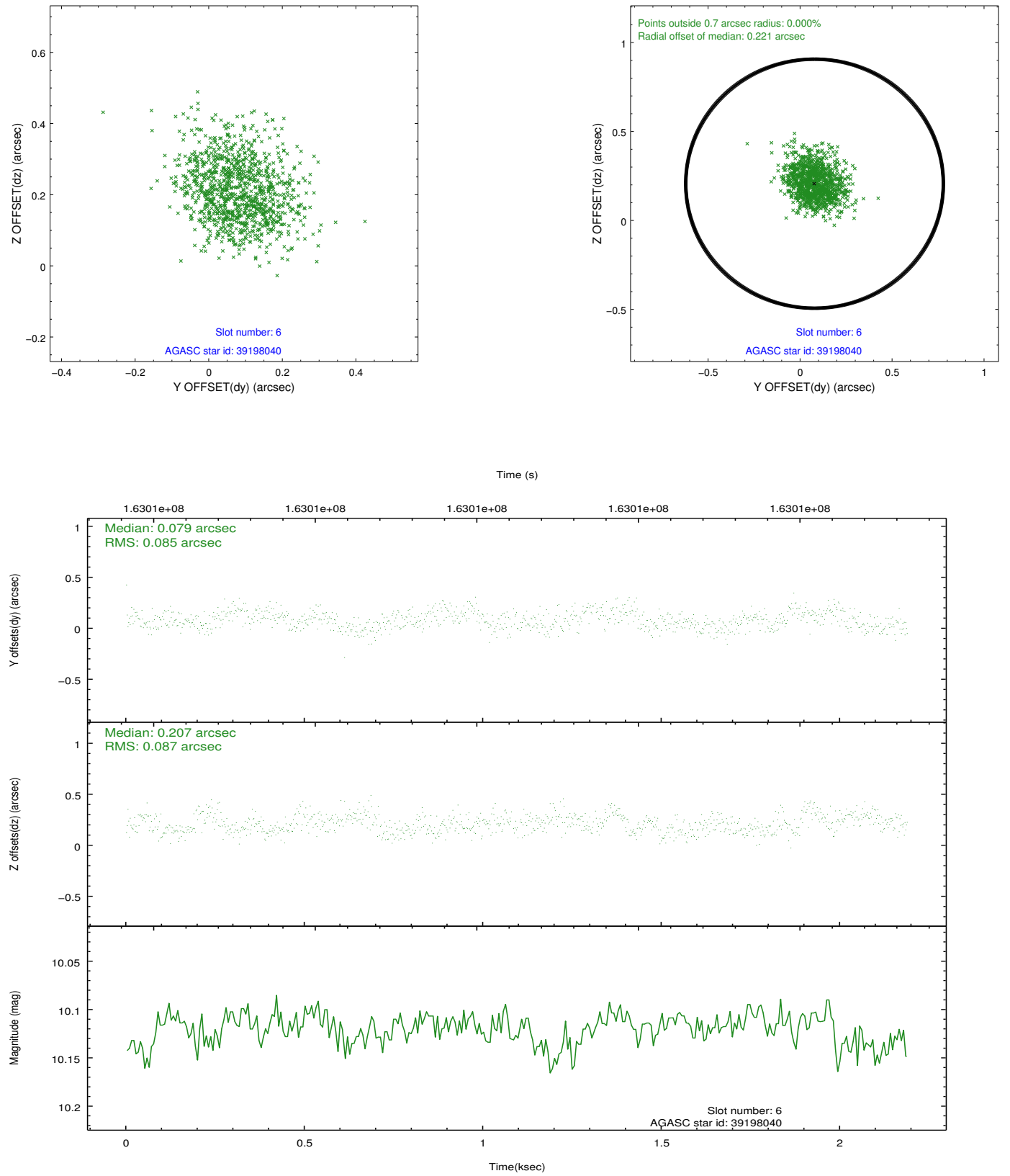
2.4.2 Slot 4



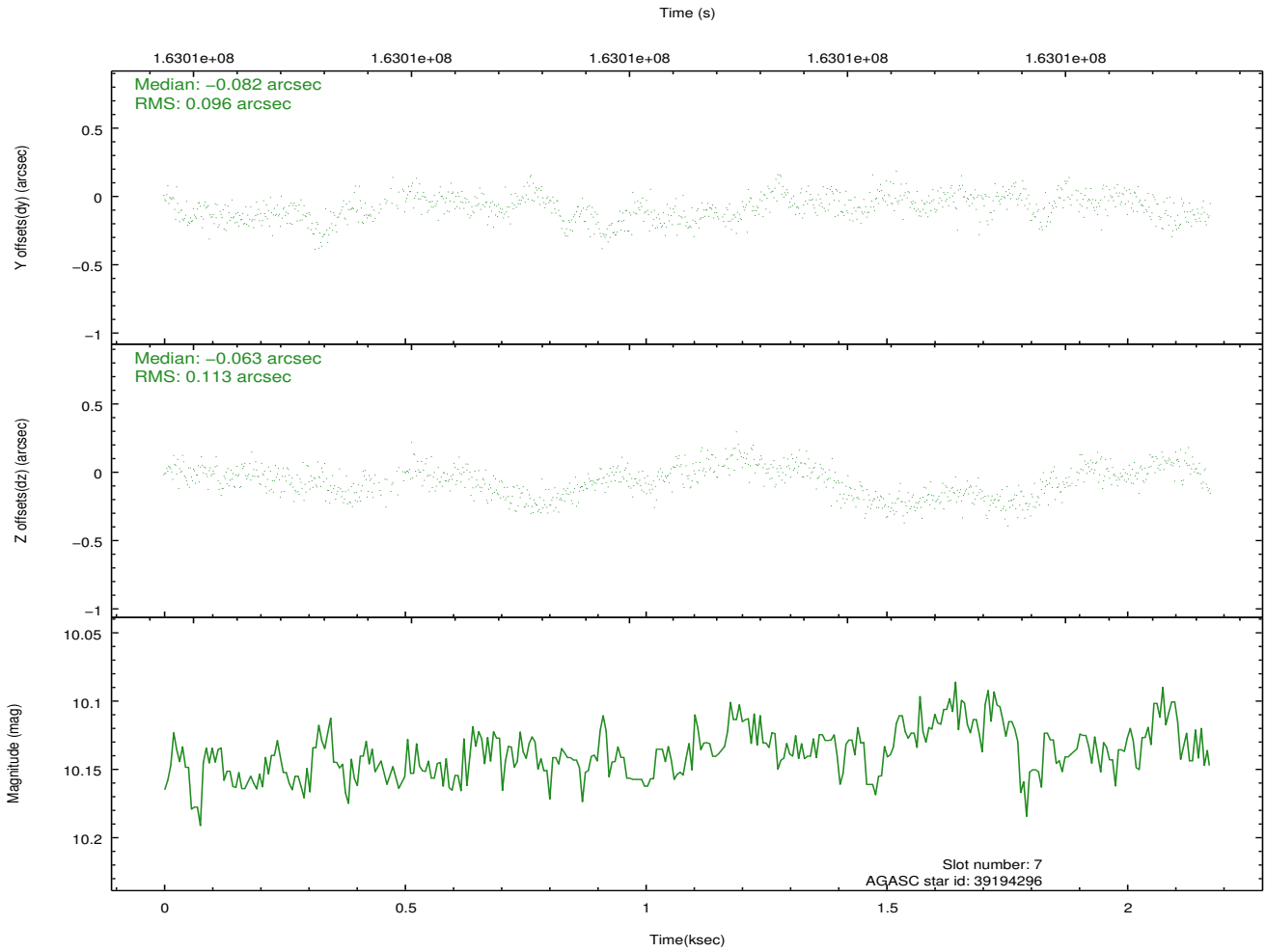
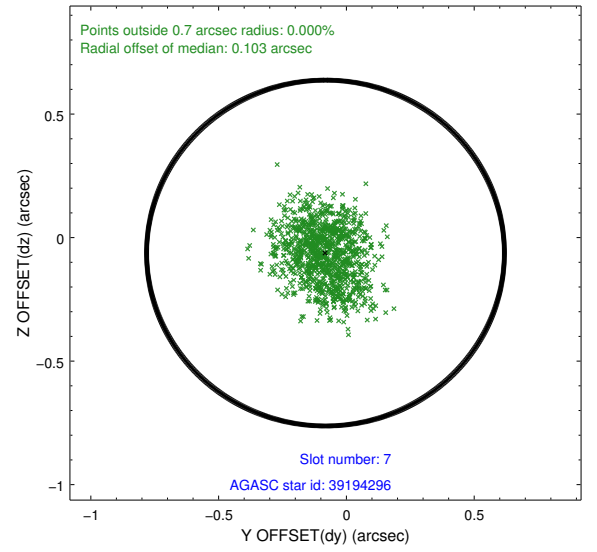
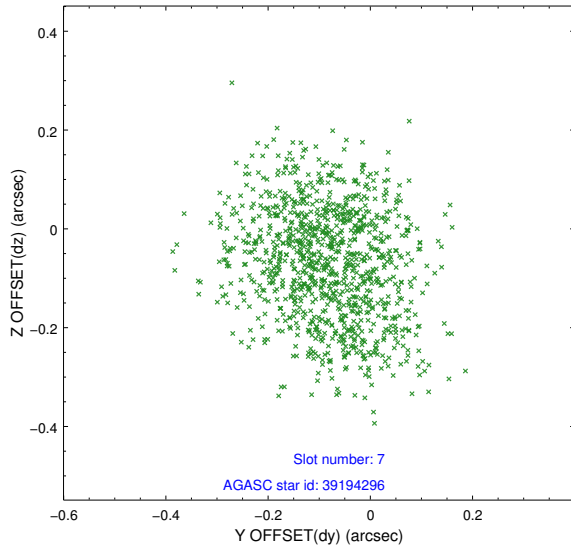
2.4.3 Slot 5



2.4.4 Slot 6

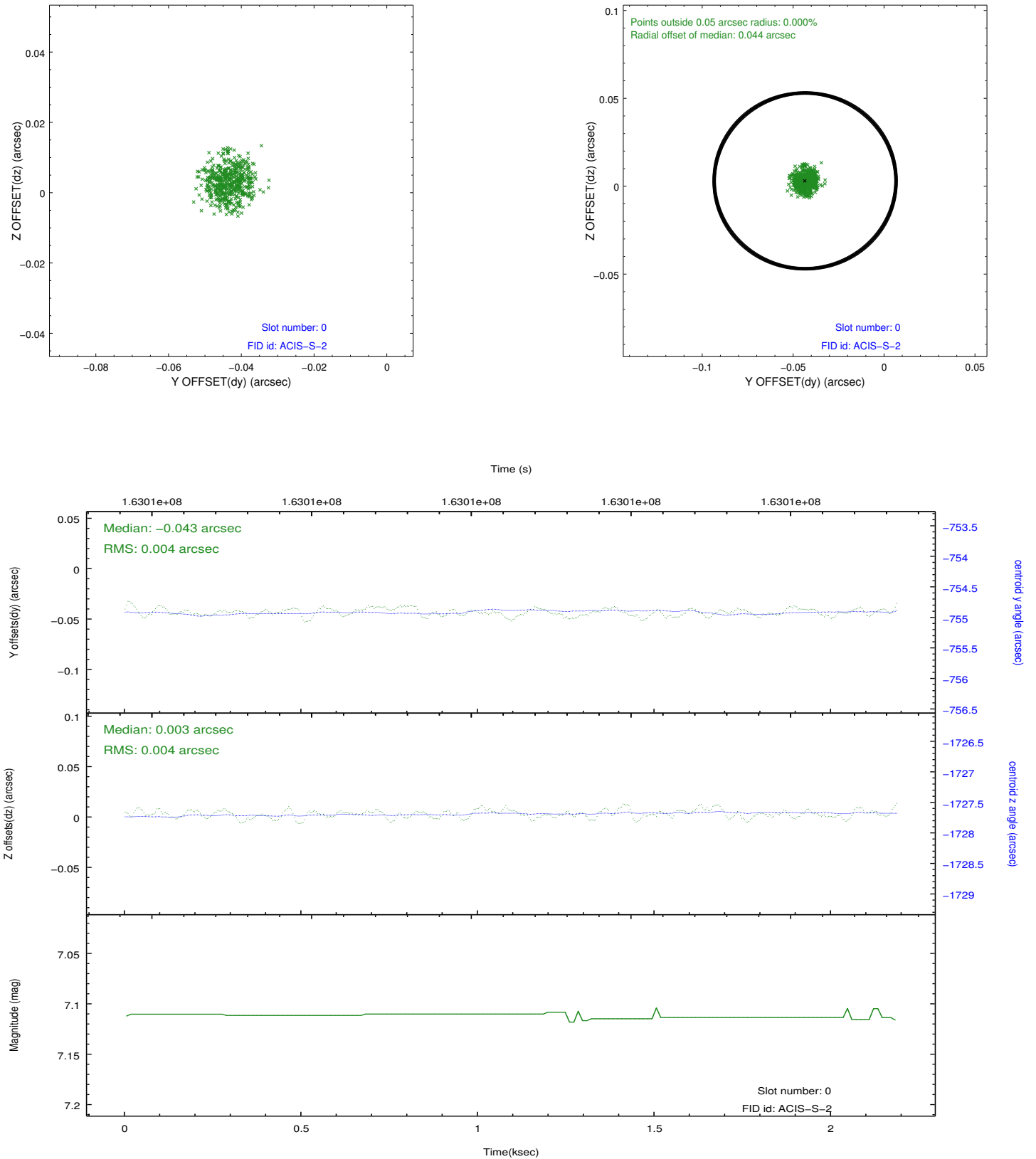


2.4.5 Slot 7

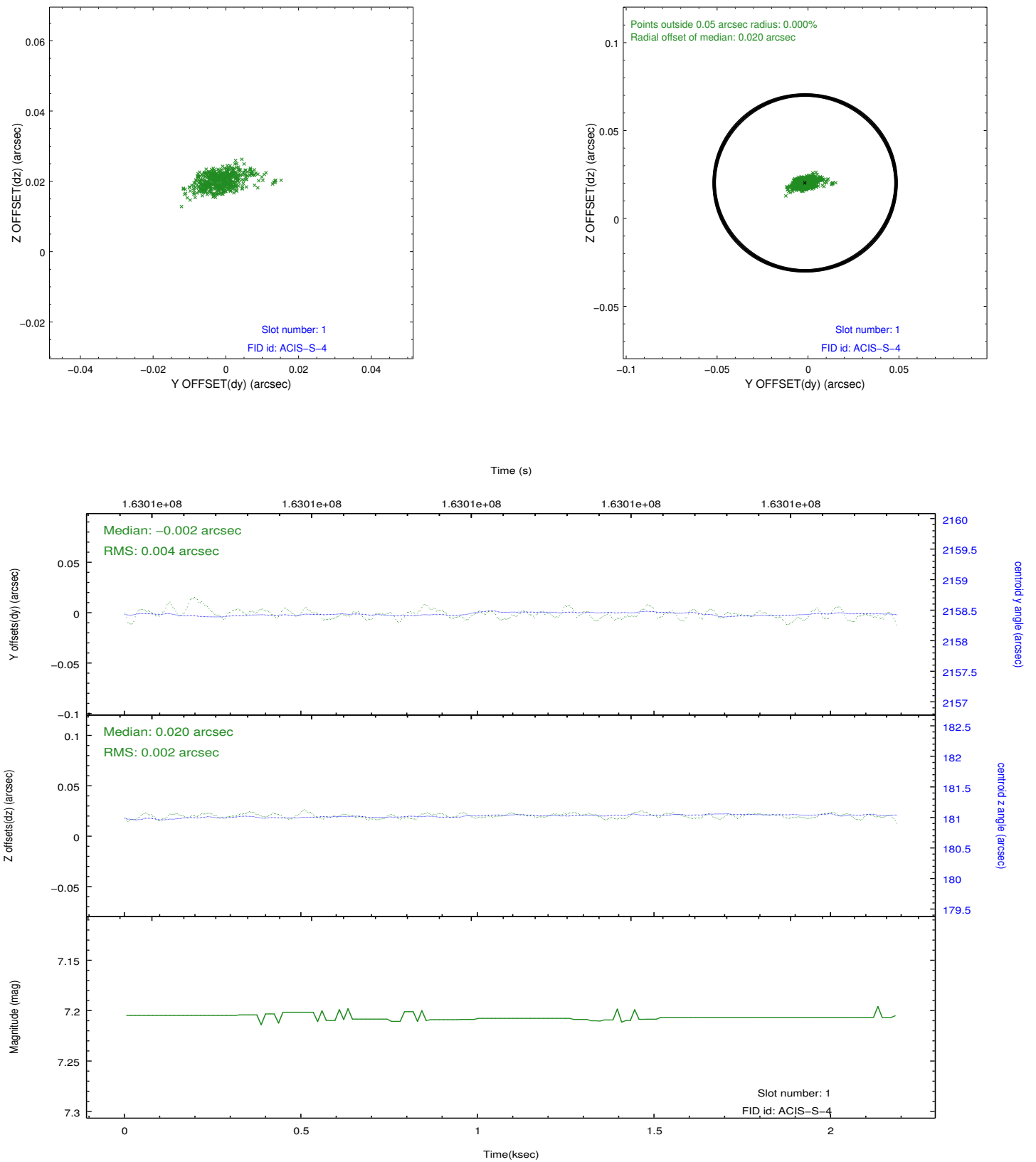


2.5 FID Slots

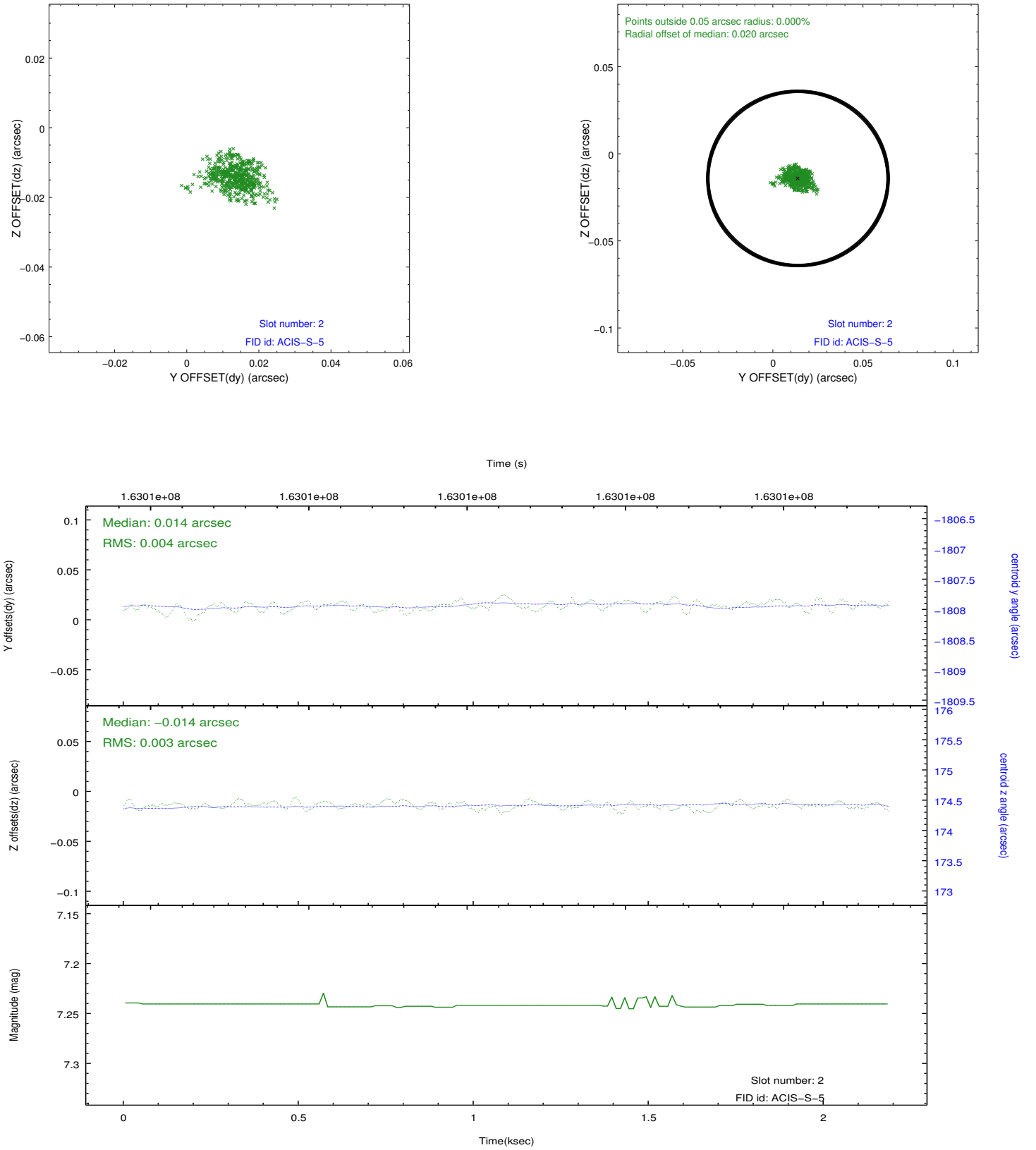
2.5.1 Slot 0



2.5.2 Slot 1



2.5.3 Slot 2



A Summary

A.1 Status

V&V Scientist	Jen Lauer
V&V Date (YYYY-MM-DD)	2012.11.07
V&V Edition	1
V&V Disposition and Status	OK
V&V Charge Time	2

A.2 Comments

Charge time for this ObsId remains at original value of 2.0 ks, although with the current processing the charge time would have been 1.7536 ksec.