

V&V Reference Report

L2 ASCDS Version : 8.4.5

Observation 4074 - L2 Version 5
Chandra X-Ray Center

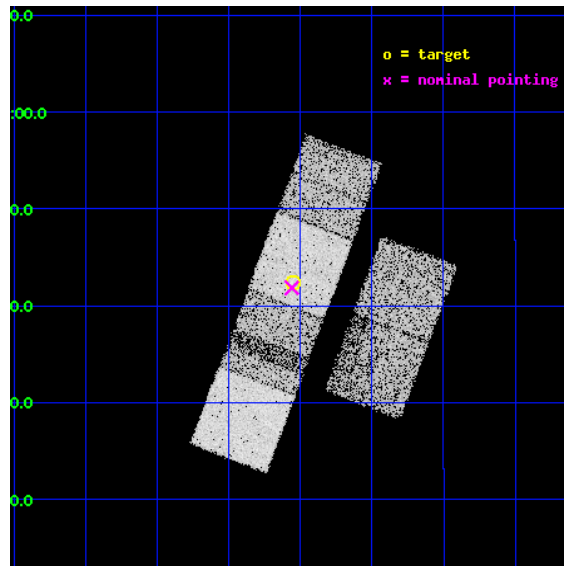
L2 Processing Date : Jan 17 2013

Contents

1	Front	2
2	OBI	3
2.1	OBI	3
2.1.1	Images	3
2.1.2	Bias	3
2.1.3	Parameters	4
2.1.4	Events	4
2.2	Compared Parameters	5
2.3	Aspect	6
2.4	Star Slots	9
2.4.1	Slot 3	9
2.4.2	Slot 5	10
2.4.3	Slot 6	11
2.4.4	Slot 7	12
2.5	FID Slots	13
2.5.1	Slot 0	13
2.5.2	Slot 1	14
2.5.3	Slot 2	15
A	Summary	16
A.1	Status	16
A.2	Comments	16

1 Front

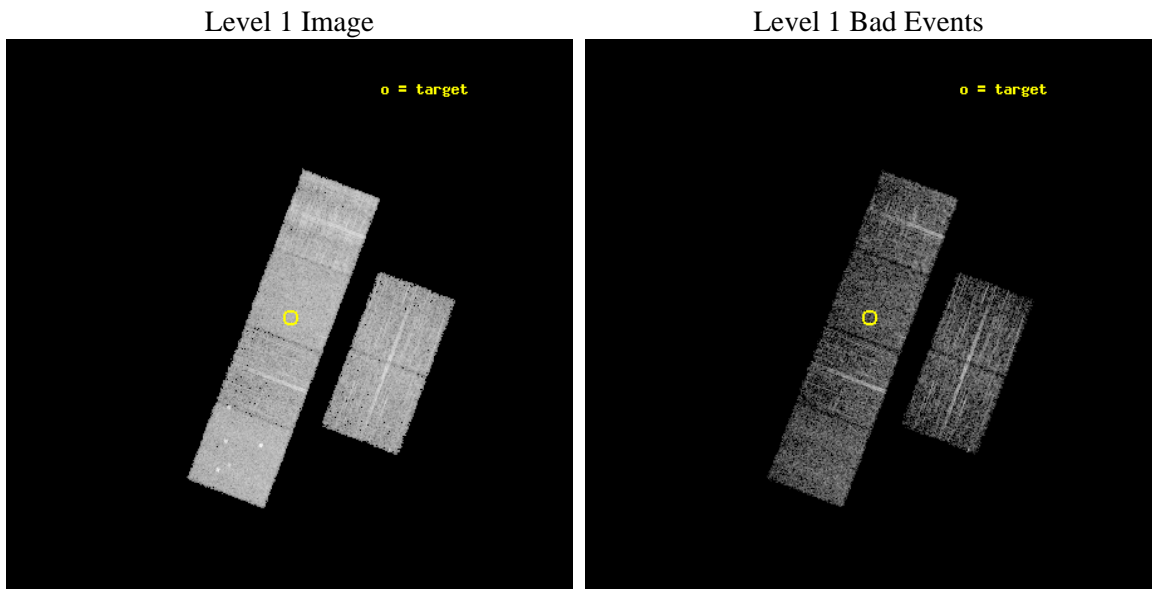
seq_num	700753	Sequence number
obs_id	4074	Observation id
title	A CHANDRA SURVEY OF THE MOST LUMINOUS QUASARS AT $Z>4$	Proposal titl
observer	Dr Cristian Vignali	Principal investigator
object	PSS 2344+0342	Source name
dtycle	0	
cycle	P	events from which exps? Prim/Second/Both
ra_targ	356.013333	Observer's specified target RA [deg]
dec_targ	3.707083	Observer's specified target Dec [deg]
ra_nom	356.01512999008	Nominal RA [deg]
dec_nom	3.6975098397983	Nominal Dec [deg]
roll_nom	290.72560289129	Nominal Roll [deg]
revision	5	Processing version of data
ontime	5164.7999807596	Sum of GTIs [s]
livetime	5099.4001735341	Livetime [s]
ontime2	5164.7999807596	Sum of GTIs [s]
ontime3	5164.7999807596	Sum of GTIs [s]
ontime5	5164.7999807596	Sum of GTIs [s]
ontime6	5164.7999807596	Sum of GTIs [s]
ontime7	5164.7999807596	Sum of GTIs [s]
ontime8	5164.7999807596	Sum of GTIs [s]
l2events	61581	Number of level 2 events



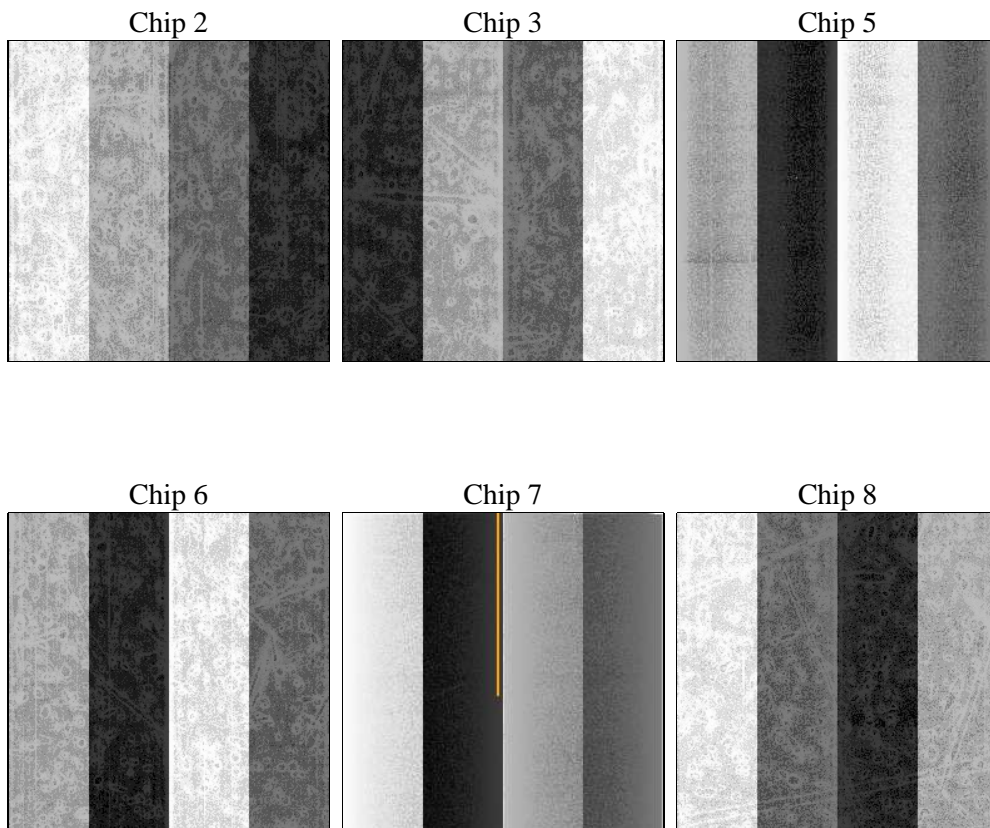
2 OBI

2.1 OBI

2.1.1 Images



2.1.2 Bias



2.1.3 Parameters

obi_num	0	Obi number	sched_exp_time	5000.000000	[s] Scheduled observation exposure time
ascdsver	8.5.1.1	Processing system revision	ontime	5164.7999807596	Sum of GTIs [s]
caldsver	4.5.5	 	ontime2	5164.7999807596	Sum of GTIs [s]
date	2013-01-17T20:39:00	Date and time of file creation	ontime3	5164.7999807596	Sum of GTIs [s]
revision	5	Processing version of data	ontime5	5164.7999807596	Sum of GTIs [s]
			ontime6	5164.7999807596	Sum of GTIs [s]
			ontime7	5164.7999807596	Sum of GTIs [s]
			ontime8	5164.7999807596	Sum of GTIs [s]
			l1events	239260	Number of level 1 events

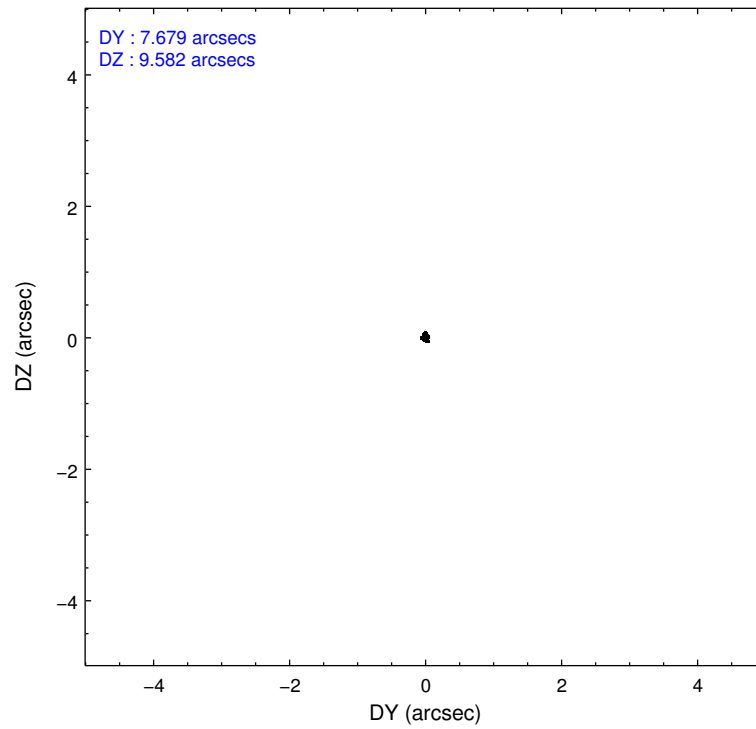
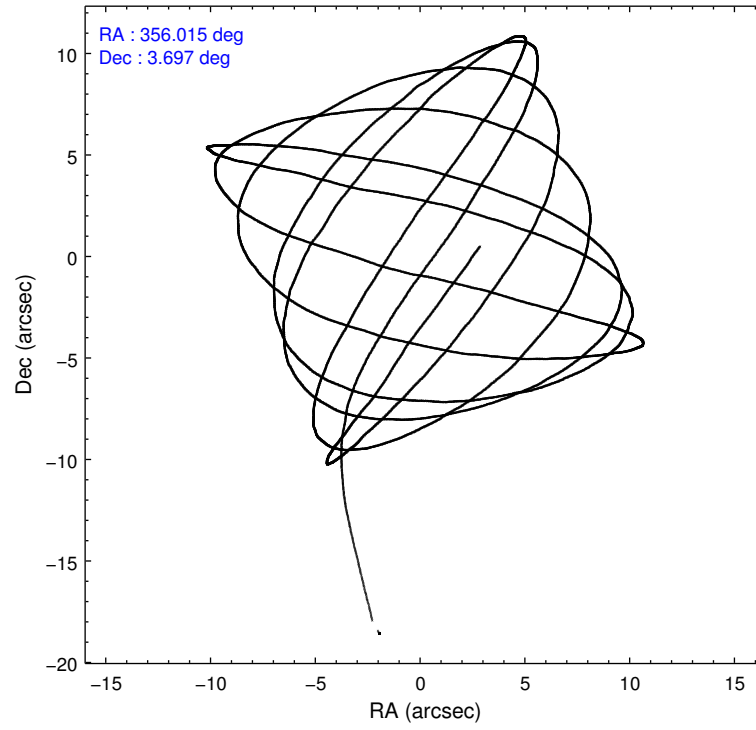
2.1.4 Events

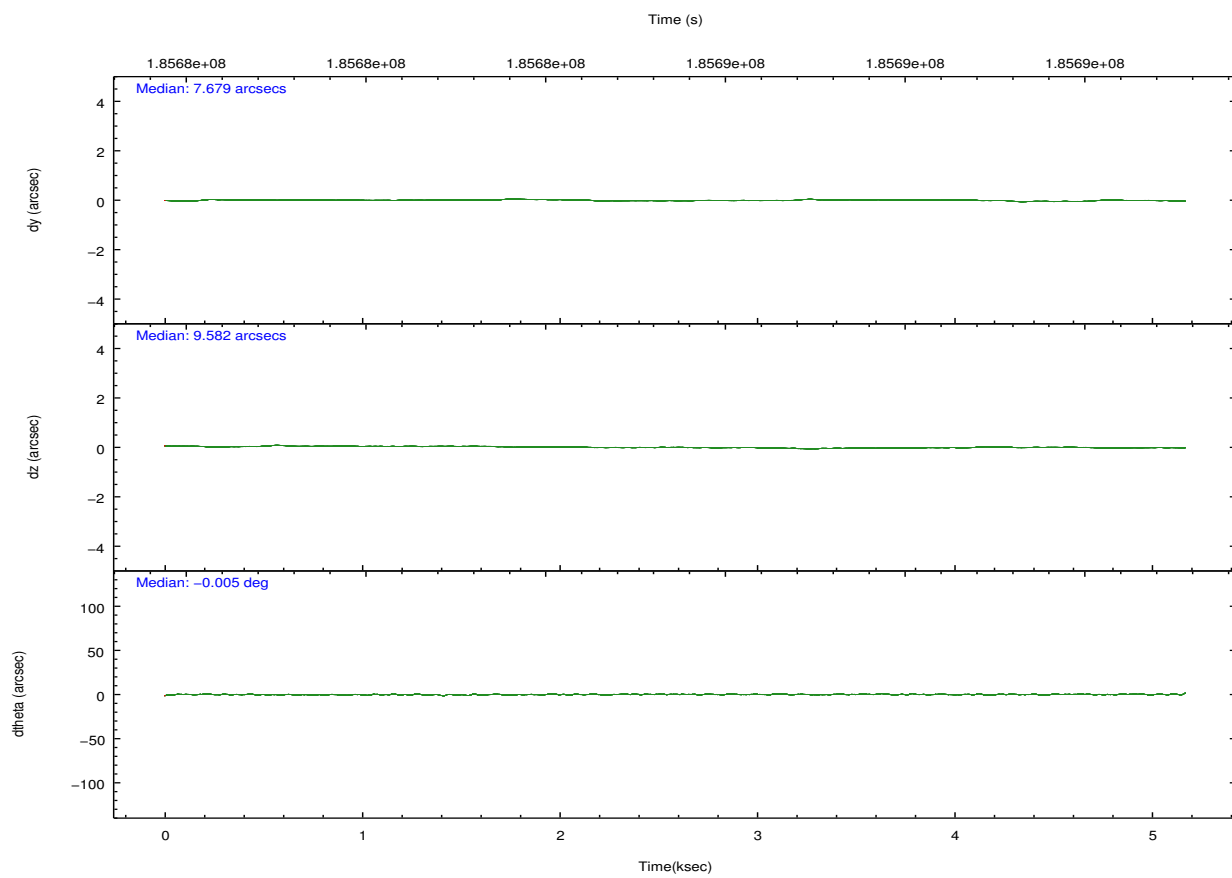
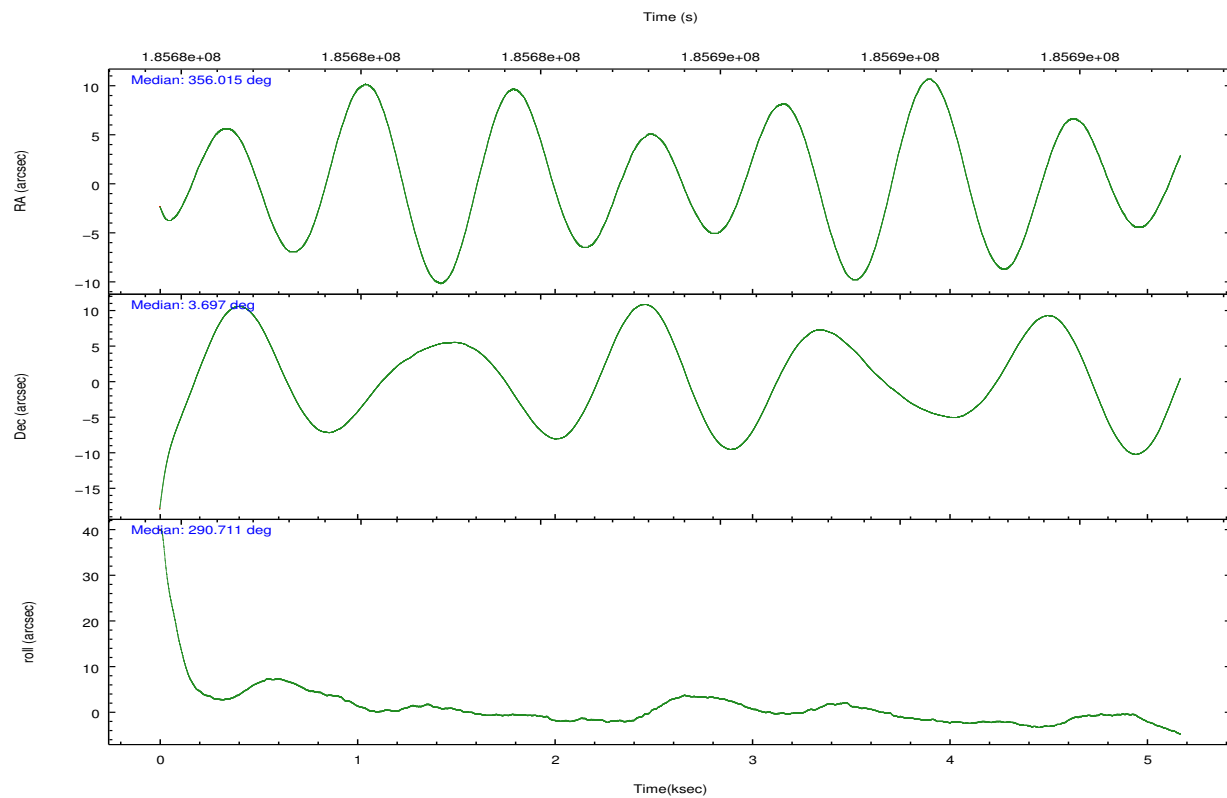
	ccd 2	ccd 3	ccd 5	ccd 6	ccd 7	ccd 8		ccd 2	ccd 3	ccd 5	ccd 6	ccd 7	ccd 8
level 1 events	32903	33078	47058	32876	40797	52548	grade 0 events	3172	3138	3275	2987	1612	9833
rejected events	26363	25985	25728	25719	23678	31411		9%	9%	6%	9%	3%	18%
rejected %	80%	78%	54%	78%	58%	59%	grade 1 events	19	16	120	13	55	69
								0%	0%	0%	0%	0%	0%
							grade 2 events	1646	2289	6133	2428	3521	3666
								5%	6%	13%	7%	8%	6%
							grade 3 events	345	388	1078	431	1573	3377
								1%	1%	2%	1%	3%	6%
							grade 4 events	457	373	1018	387	1578	3190
								1%	1%	2%	1%	3%	6%
							grade 5 events	1112	1211	3333	1328	3850	1714
								3%	3%	7%	4%	9%	3%
							grade 6 events	1494	1548	10630	1457	9431	3492
								4%	4%	22%	4%	23%	6%
							grade 7 events	24658	24115	21471	23845	19177	27207
								74%	72%	45%	72%	47%	51%

2.2 Compared Parameters

Parameter	Planned	Actual	Parameter	Planned	Actual
Instrument	ACIS	ACIS	Obspar format version number	7	7
Detector	ACIS-235678	ACIS-235678	Obspar file type	PREDICTED	ACTUAL
Grating	NONE	NONE	Obspar update status	NONE	UPDATED
Data mode	FAINT	FAINT	Number of optional ACIS chips dropped	0	0
Observation mode	POINTING	POINTING	On-chip summing requested	N	N
[deg] Pointing RA	355.993765	356.0151299900845	Subarray requested	NONE	NONE
[deg] Pointing Dec	3.714534	3.697509839798258	Alternating exposures requested	N	N
[deg] Pointing Roll	290.570286	290.7256028912882	[s] Primary exposure time	0.000000	3.2
[mm] SIM focus pos	-0.684267	-0.6828225247311905			
[mm] SIM defocus	0	0.001444936568705701			
[mm] SIM translation stage pos	-190.132523	-190.1400660498719			
[mm] SIM translation stage offset	0	0.00754346686406393			
[s] Observation start time (MET)	185683304.184000	185682169.72831			
Observation start date	2003-11-20T02:40:40	2003-11-20T02:22:49			
[s] Observation end time (MET)	185688304.184000	185688842.9911			
Observation end date	2003-11-20T04:04:00	2003-11-20T04:14:02			
Read mode	TIMED	TIMED			

2.3 Aspect



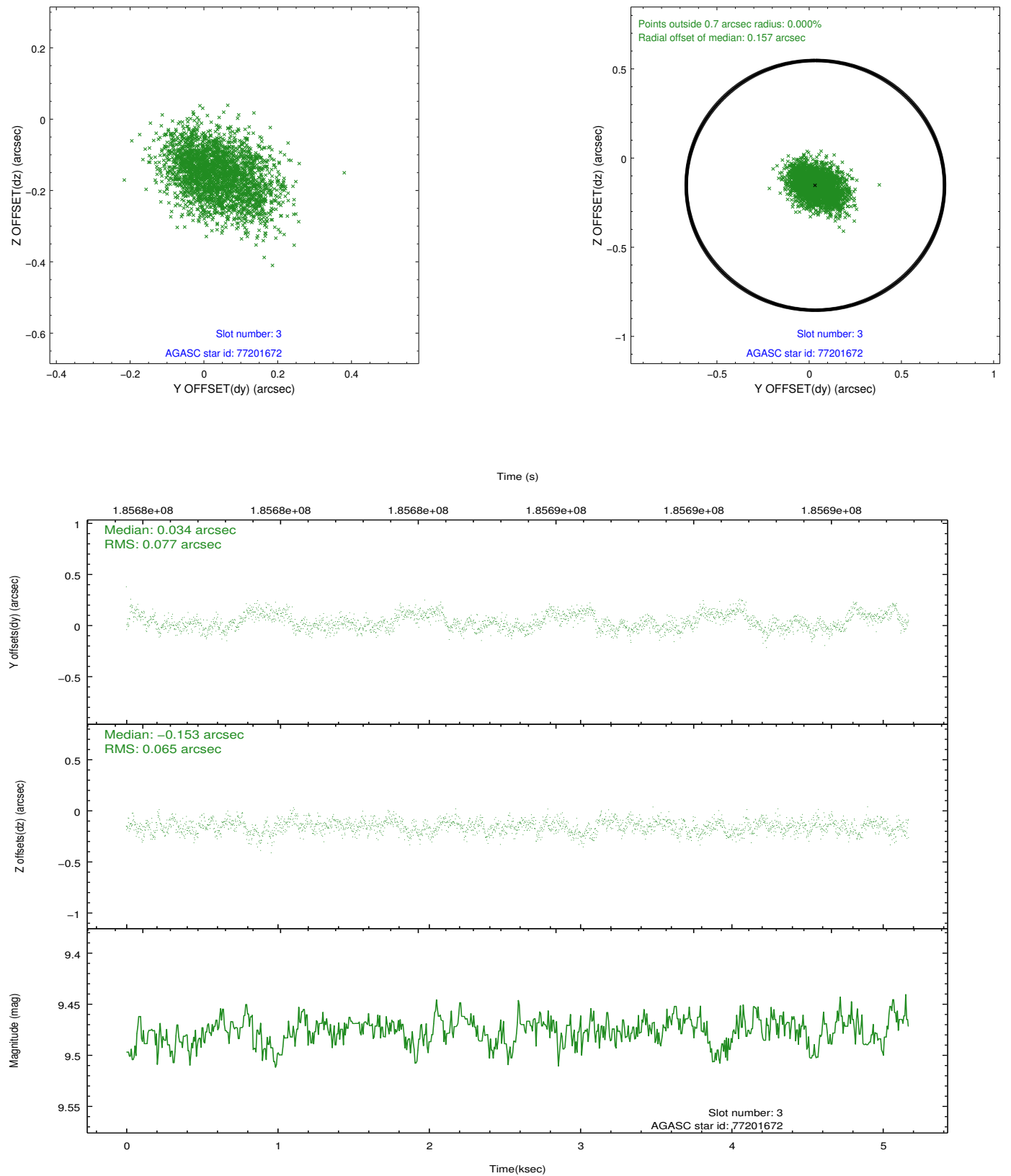


Slot Statistics

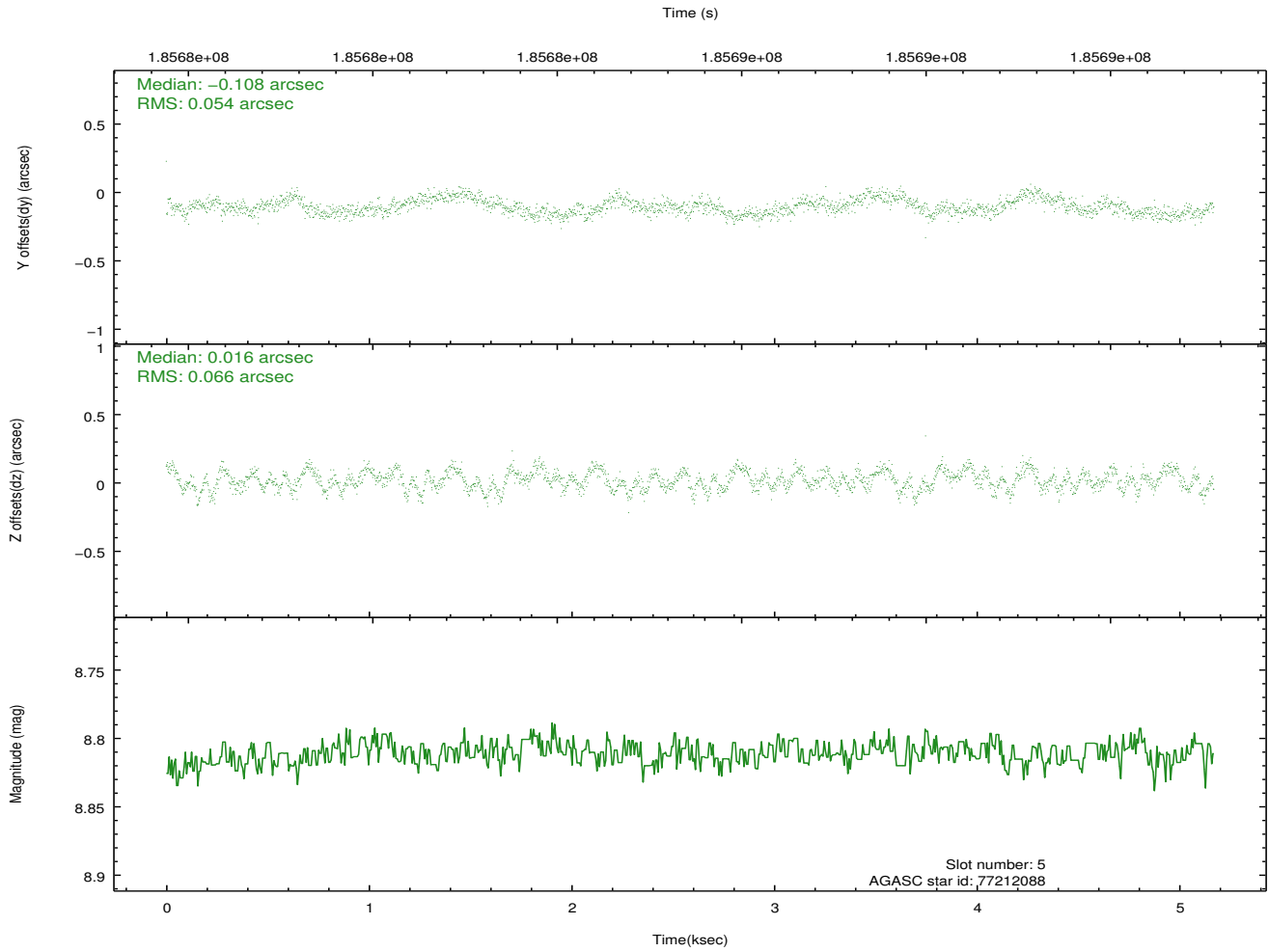
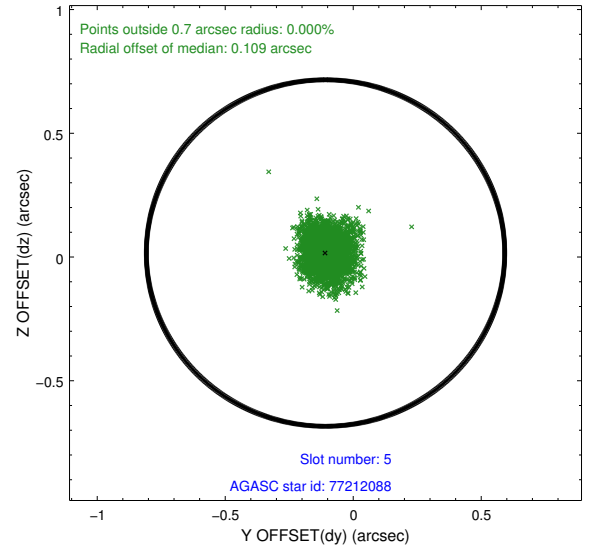
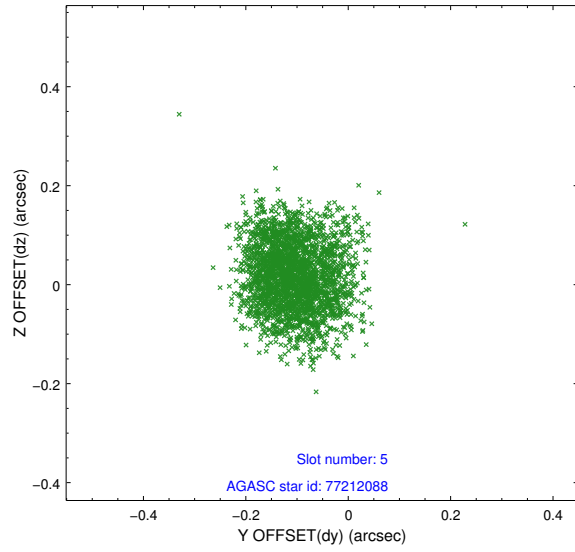
slot	status	id	mag	n_pts	med_dy	med_dz	dr1	dr2	ra	dec	mean_y	mean_z
0	FID	ACIS-S-2	7.10	1262	-0.035	-0.027	0.007	0.010	0.000000	0.000000	-760.45	-1730.86
1	FID	ACIS-S-4	7.20	1262	0.081	0.024	0.005	0.009	0.000000	0.000000	2152.38	176.51
2	FID	ACIS-S-5	7.23	1261	-0.078	0.012	0.006	0.010	0.000000	0.000000	-1811.86	171.44
3	GUIDE	77201672	9.48	2519	0.034	-0.153	0.108	0.173	355.604099	3.365844	683.19	-1751.67
4	OMITTED		0.00	0	0.000	0.000	0.000	0.000	0.000000	0.000000	0.00	0.00
5	GUIDE	77212088	8.81	2521	-0.108	0.016	0.093	0.146	355.539820	4.191649	-2181.00	-923.17
6	GUIDE	77208208	9.38	2522	-0.052	0.173	0.117	0.188	356.468756	4.297334	-1367.31	2333.71
7	GUIDE	77211032	10.21	2518	0.115	-0.037	0.179	0.282	355.326437	3.630111	-558.74	-2350.00

2.4 Star Slots

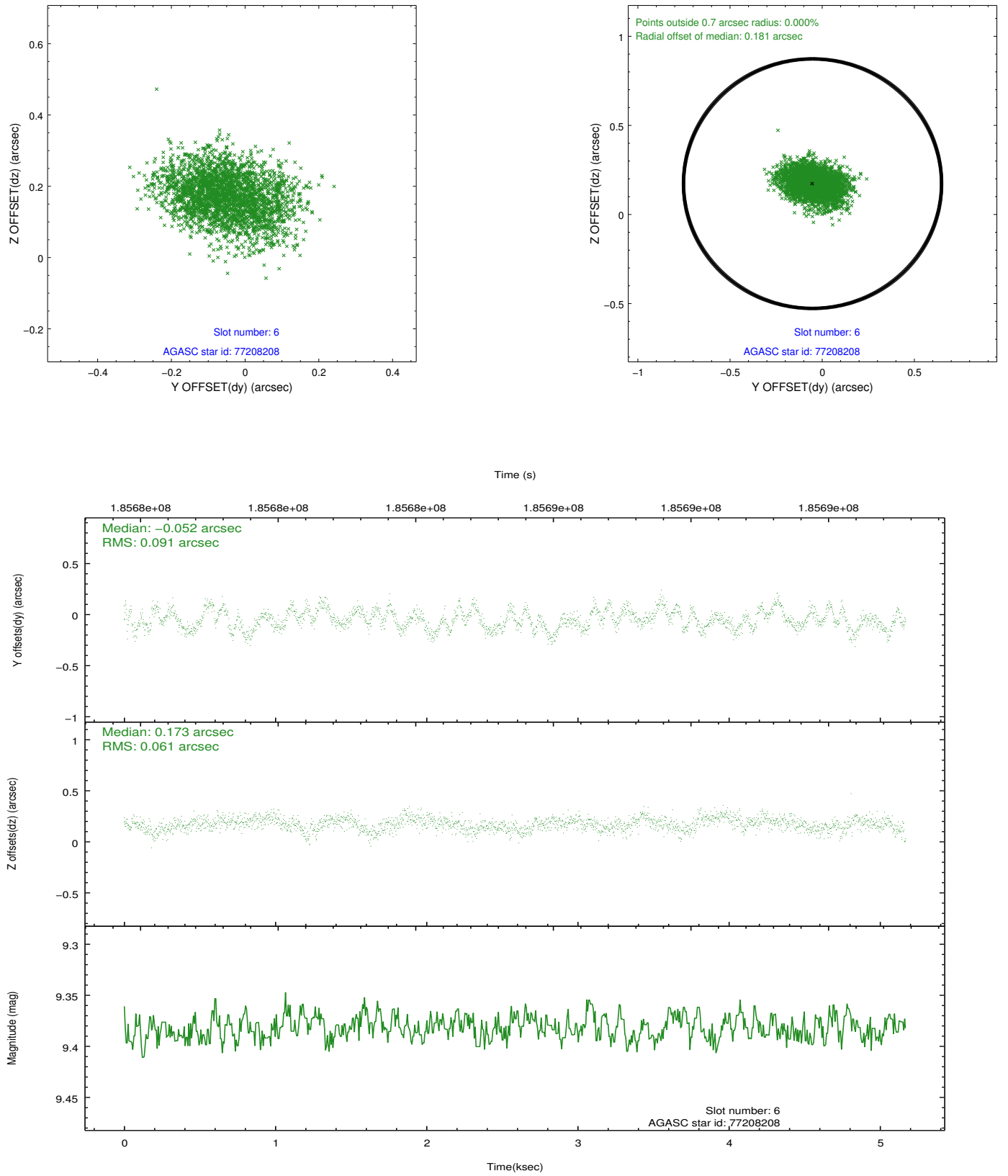
2.4.1 Slot 3



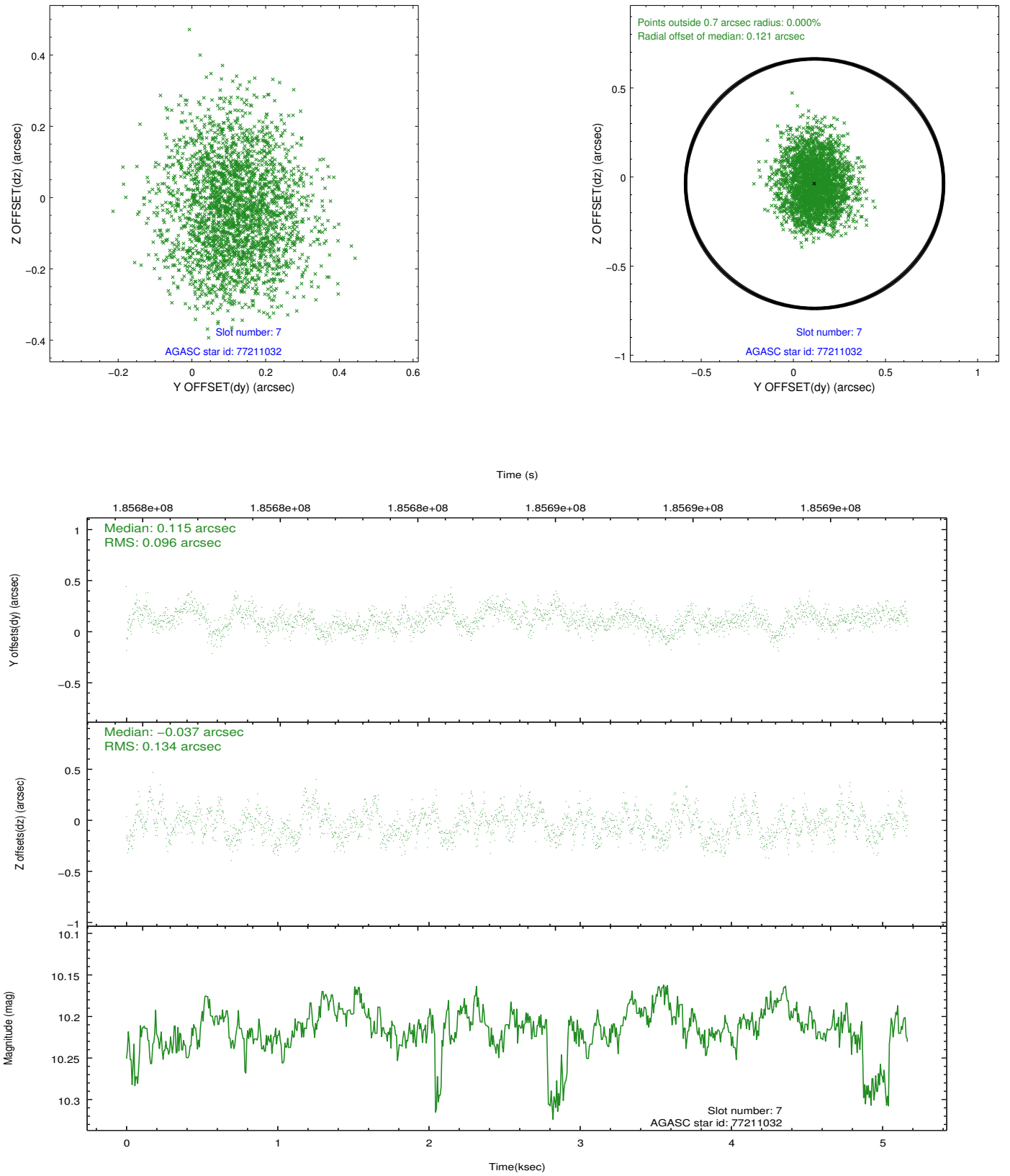
2.4.2 Slot 5



2.4.3 Slot 6

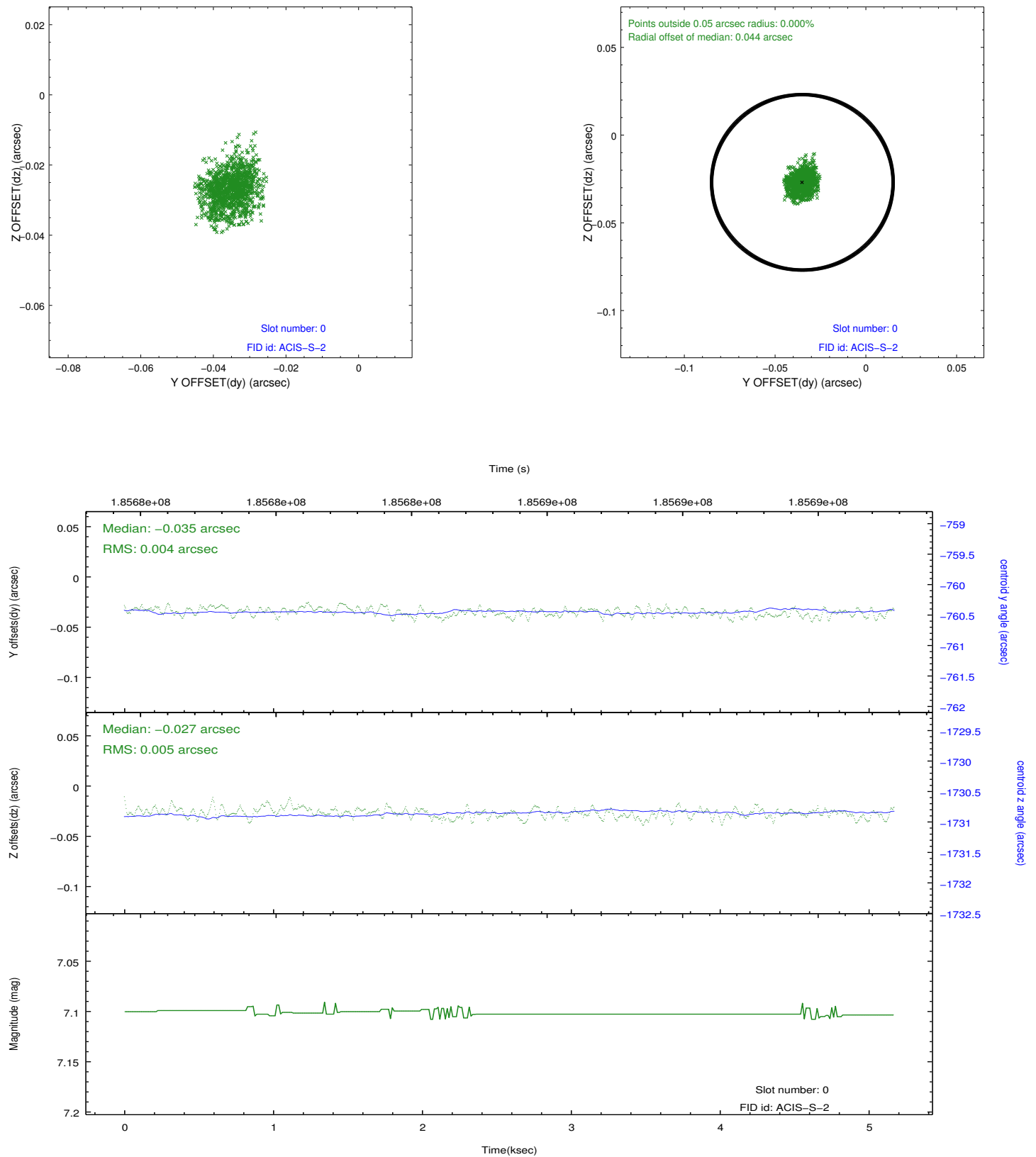


2.4.4 Slot 7

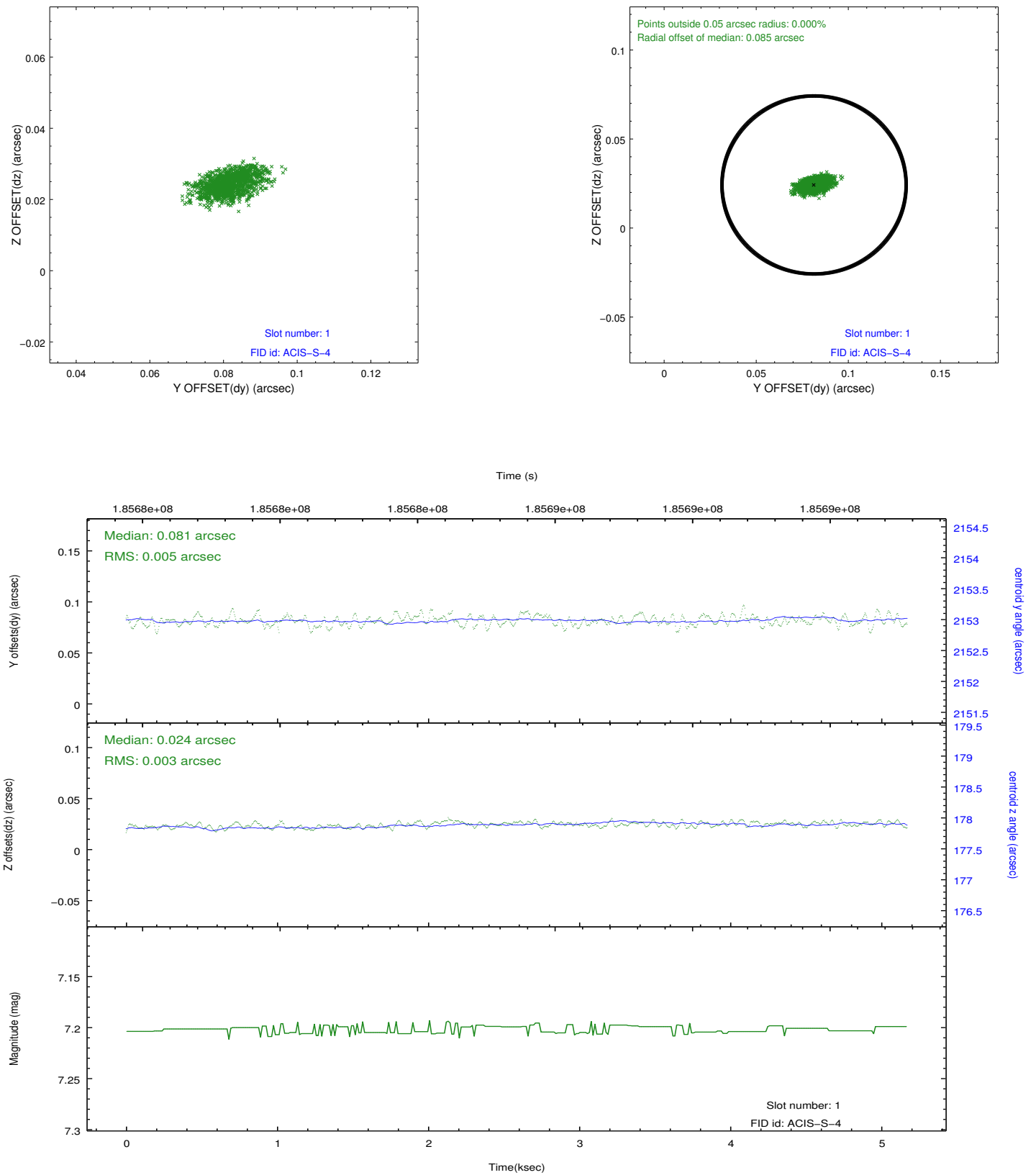


2.5 FID Slots

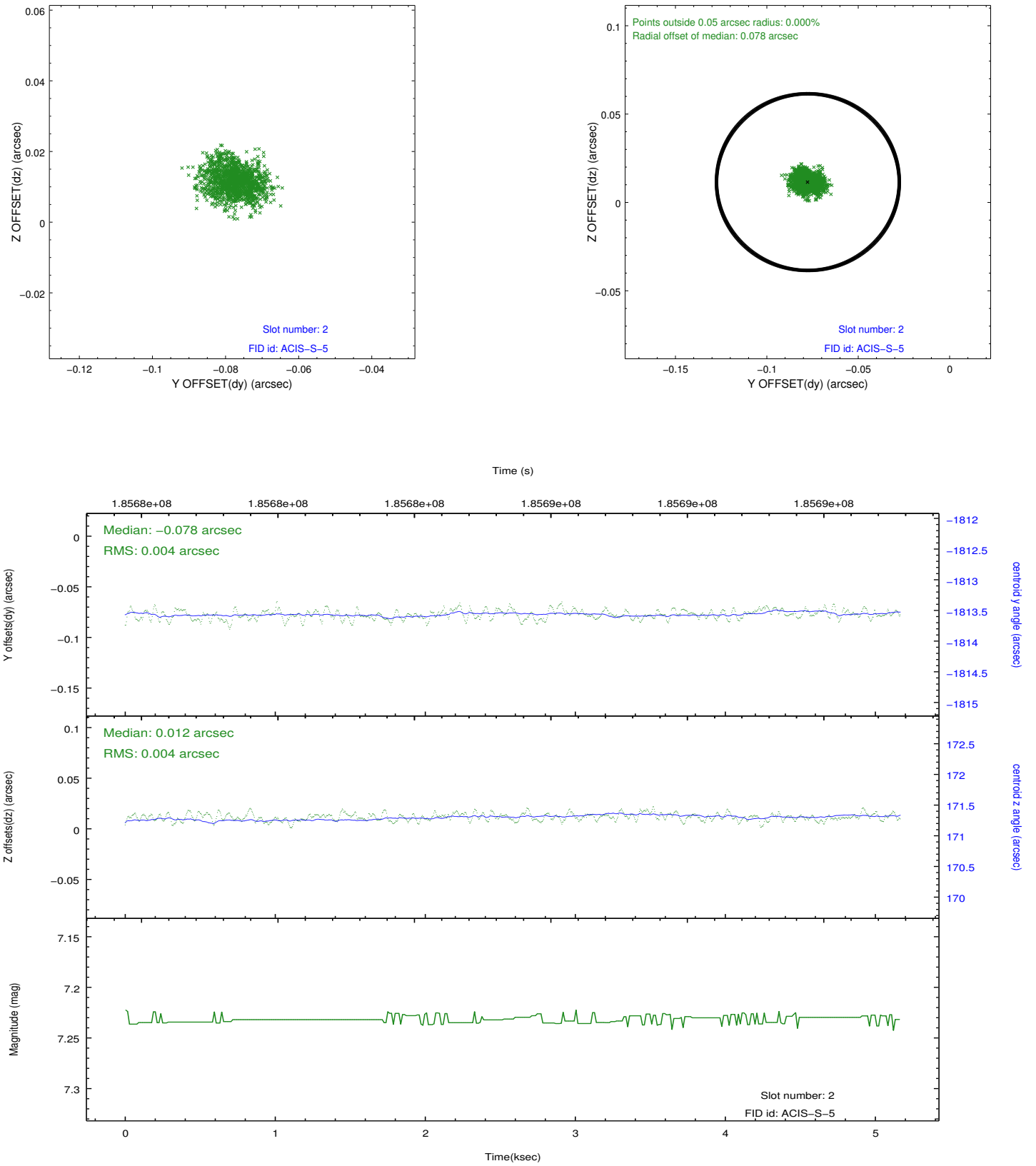
2.5.1 Slot 0



2.5.2 Slot 1



2.5.3 Slot 2



A Summary

A.1 Status

V&V Scientist	Beth Sundheim
V&V Date (YYYY-MM-DD)	2013.01.22
V&V Edition	1
V&V Disposition and Status	OK
V&V Charge Time	5.164

A.2 Comments

The guide star in slot 4 was removed from the aspect solution due to poor data quality. The aspect solution is improved by the removal of this star from the solution.