

V&V Reference Report

L2 ASCDS Version : 7.6.8

Observation 4071 - L2 Version 001
Chandra X-Ray Center

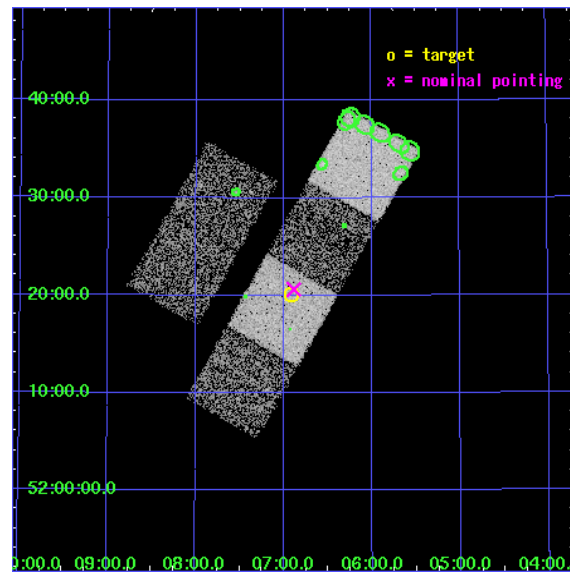
L2 Processing Date : Jul 24 2006

Contents

1	Front	2
2	OBI	3
2.1	OBI	3
2.1.1	Images	3
2.1.2	Bias	3
2.1.3	Parameters	4
2.1.4	Events	4
2.2	Compared Parameters	5
2.3	Aspect	6
2.4	Star Slots	9
2.4.1	Slot 3	9
2.4.2	Slot 4	10
2.4.3	Slot 5	11
2.4.4	Slot 6	12
2.4.5	Slot 7	13
2.5	FID Slots	14
2.5.1	Slot 0	14
2.5.2	Slot 1	15
2.5.3	Slot 2	16
3	Point Sources	17
A	Summary	18
A.1	Status	18
A.2	Comments	18

1 Front

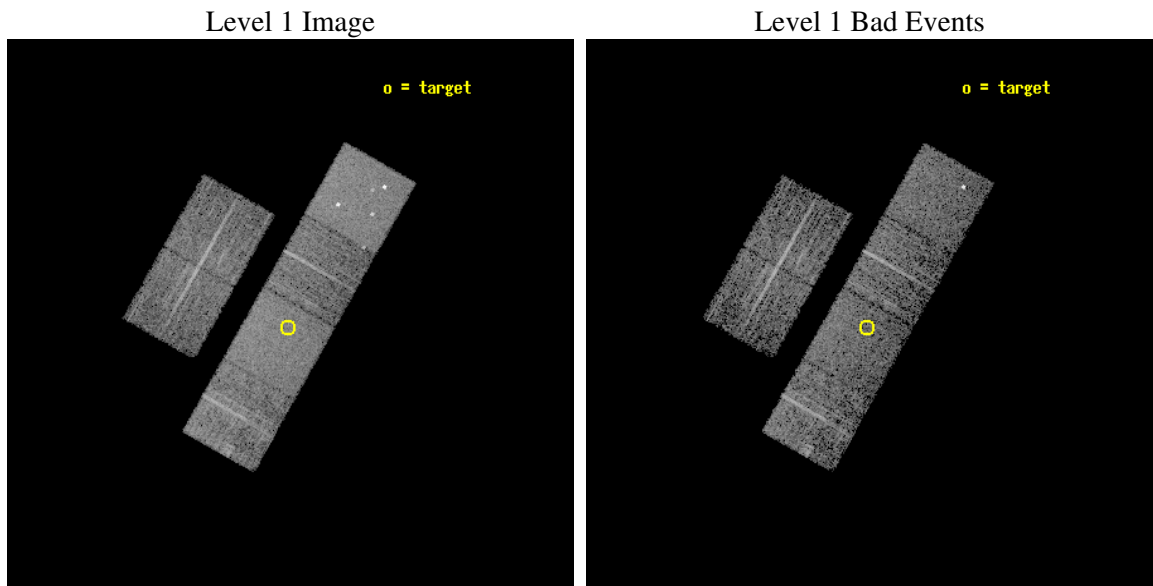
seq_num	700750
obs_id	4071
title	A CHANDRA SURVEY OF THE MOST LUMINOUS QUASARS AT $Z > 4$
observer	Dr. Cristian Vignali
object	PSS 1506+5220
dtcycle	0
cycle	P
ra_targ	226.727083
dec_targ	52.334778
ra_nom	226.72167607801
dec_nom	52.343843856333
roll_nom	119.59521580641
revision	2
ontime	4918.3999816775
livetime	4856.1202396046
ontime2	4918.3999816775
ontime3	4918.3999816775
ontime5	4918.3999816775
ontime6	4918.3999816775
ontime7	4918.3999816775
ontime8	4918.3999816775
l2events	50283



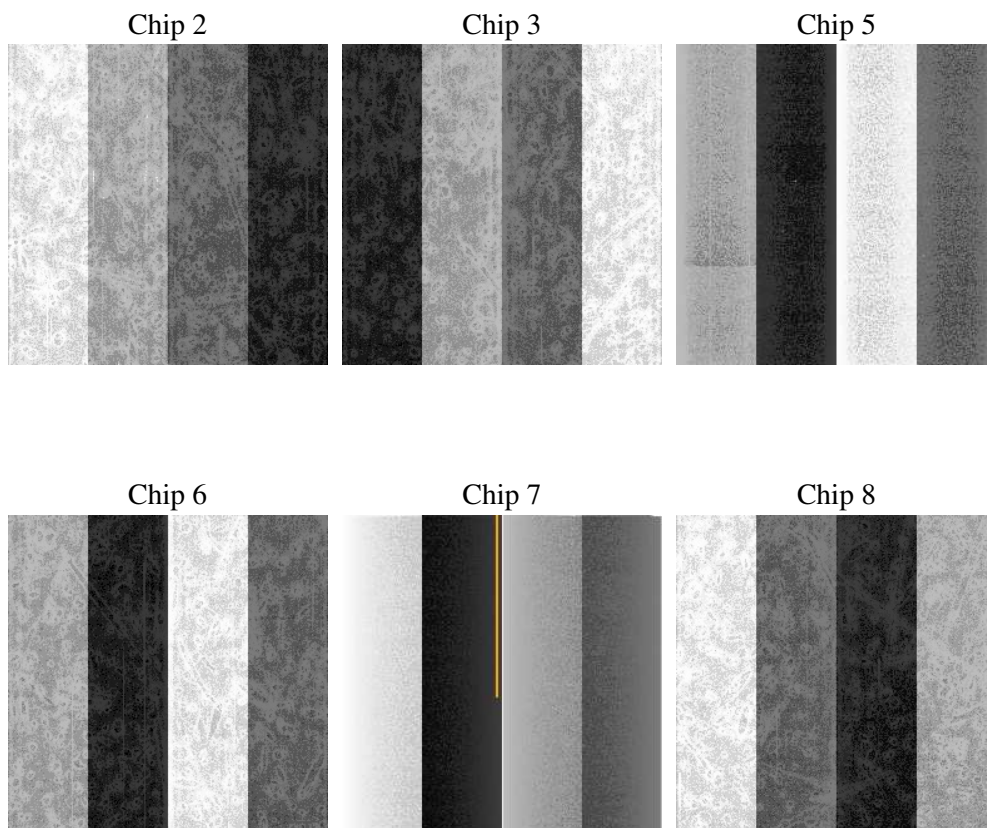
2 OBI

2.1 OBI

2.1.1 Images



2.1.2 Bias



2.1.3 Parameters

obi_num	0
ascdsver	7.6.8
caldbver	3.2.2
date	2006-07-24T17:07:44
revision	2

sched_exp_time	4959.941000
ontime	4923.0789775252
ontime2	4923.0789775252
ontime3	4923.0789775252
ontime5	4923.0789775252
ontime6	4923.0789775252
ontime7	4923.0789775252
ontime8	4923.0789775252
l1events	228205

2.1.4 Events

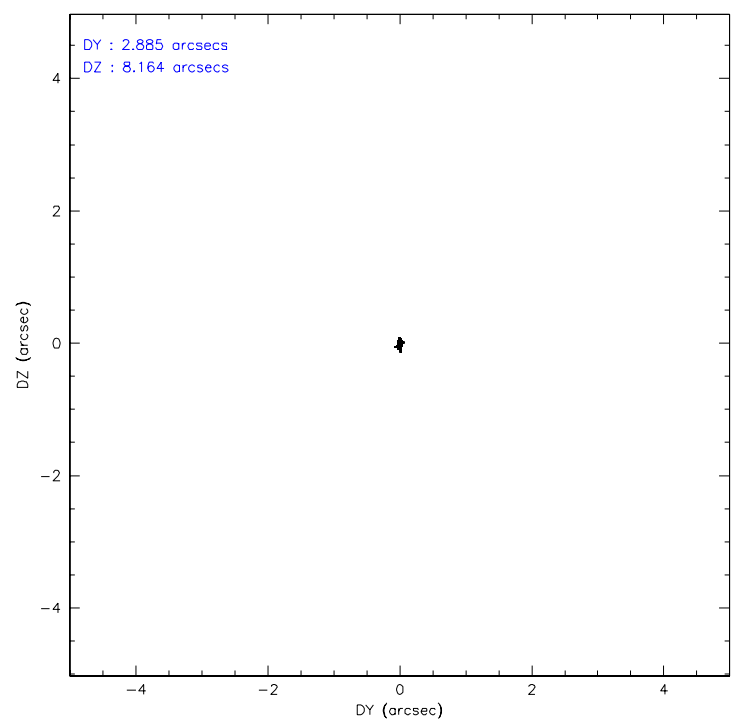
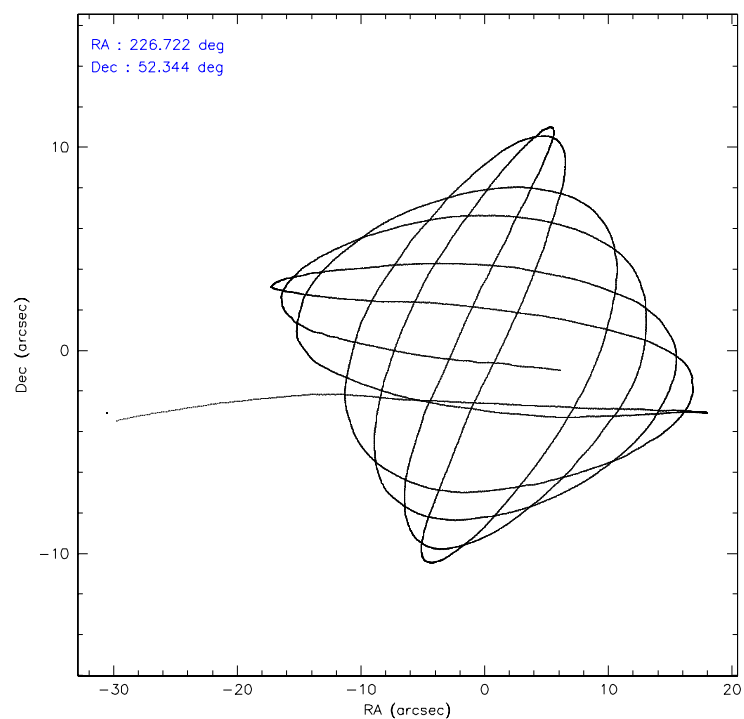
	ccd 2	ccd 3	ccd 5	ccd 6	ccd 7	ccd 8
level 1 events	31886	29923	50564	31900	43569	40363
rejected events	28143	26346	27160	28237	26542	32191
rejected %	88%	88%	53%	88%	60%	79%

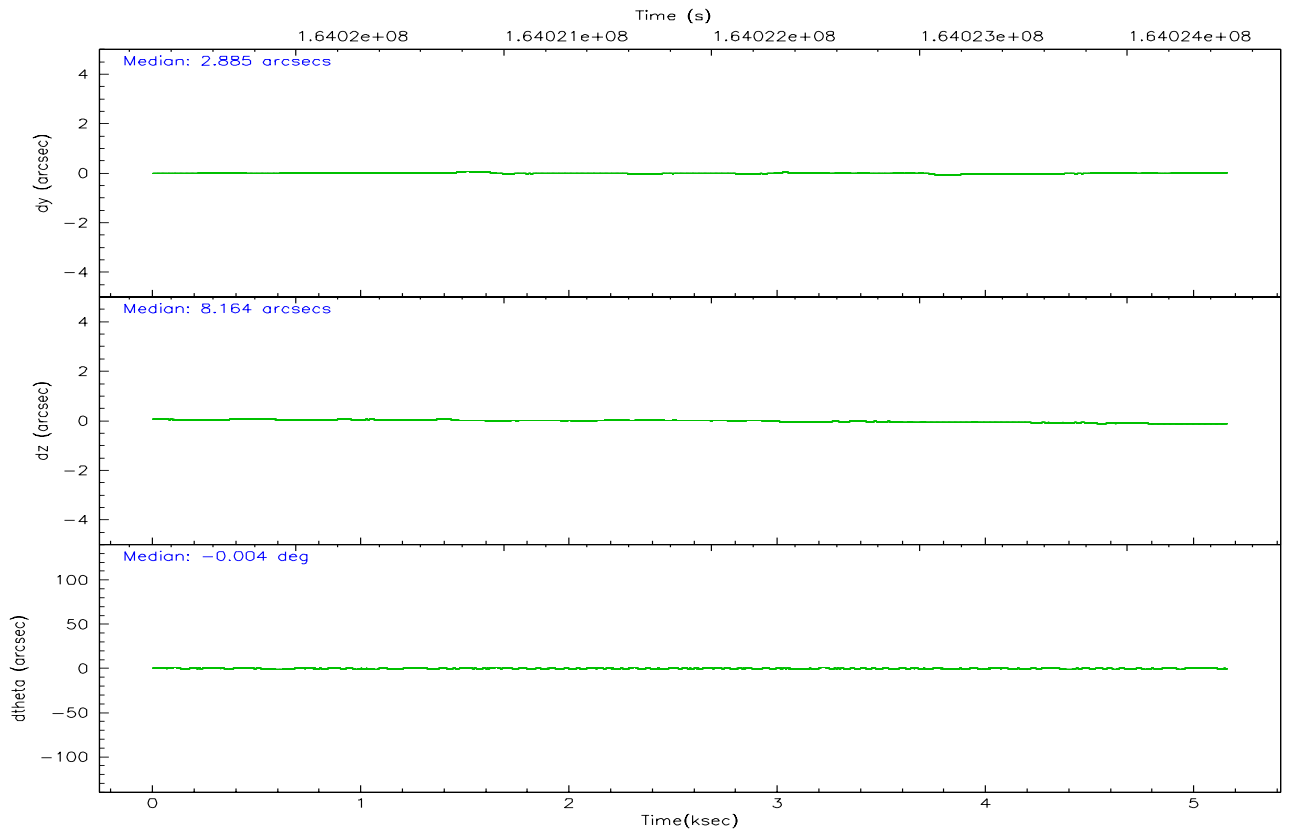
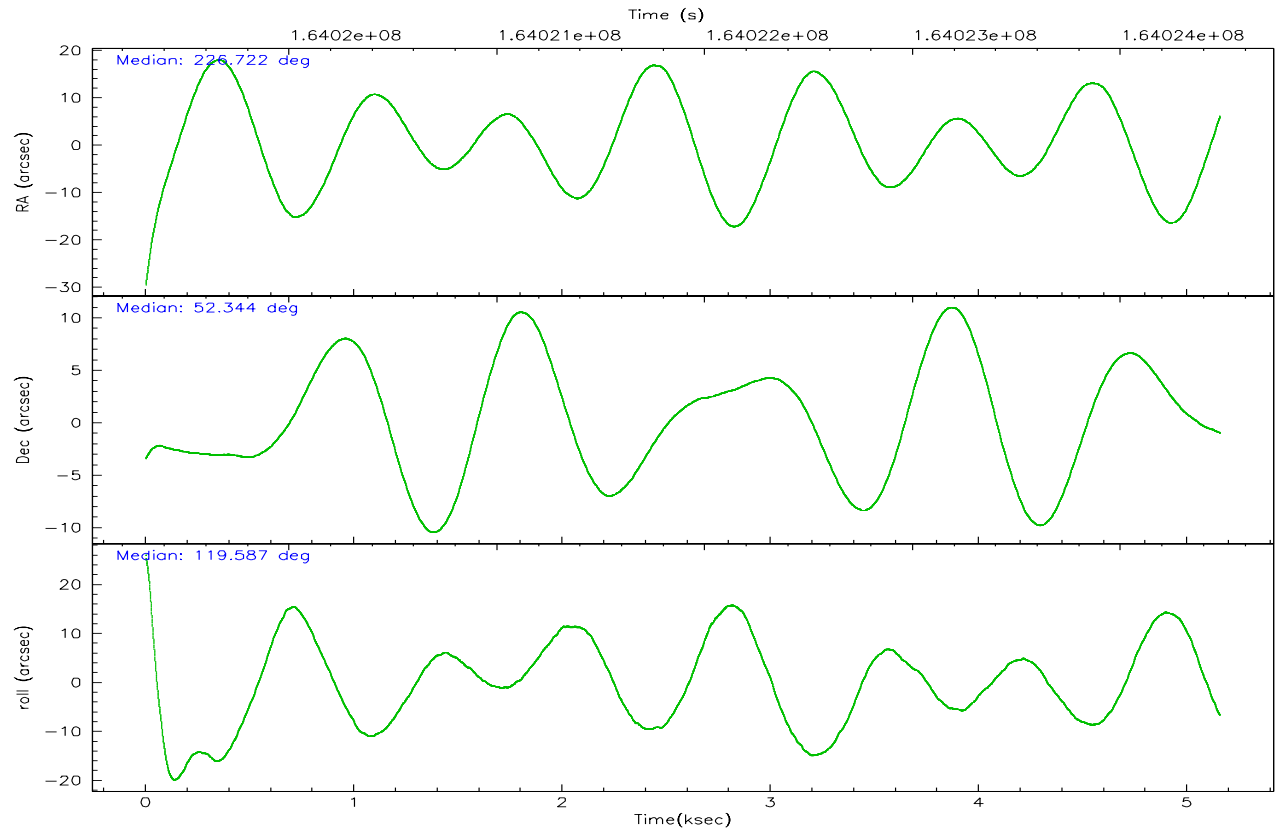
	ccd 2	ccd 3	ccd 5	ccd 6	ccd 7	ccd 8
grade 0 events	1732	1567	3293	1507	1131	2671
	5%	5%	6%	4%	2%	6%
grade 1 events	24	15	52	16	33	27
	0%	0%	0%	0%	0%	0%
grade 2 events	674	671	7041	750	4103	1781
	2%	2%	13%	2%	9%	4%
grade 3 events	360	339	509	372	893	816
	1%	1%	1%	1%	2%	2%
grade 4 events	376	363	497	317	816	837
	1%	1%	0%	0%	1%	2%
grade 5 events	1233	1382	3071	1377	2909	1903
	3%	4%	6%	4%	6%	4%
grade 6 events	601	638	12088	720	10096	2069
	1%	2%	23%	2%	23%	5%
grade 7 events	26886	24948	24013	26841	23588	30259
	84%	83%	47%	84%	54%	74%

2.2 Compared Parameters

Parameter	Planned	Actual	Parameter	Planned	Actual
Instrument	ACIS	ACIS	Obspar format version number	6	6
Detector	ACIS-235678	ACIS-235678	Obspar file type	PREDICTED	ACTUAL
Grating	NONE	NONE	Obspar update status	NONE	UPDATED
Data mode	FAINT	FAINT	On-chip summing requested	N	N
Observation mode	POINTING	POINTING	Subarray requested	NONE	NONE
Pointing RA	226.760536	226.721676078008	Alternating exposures requested	N	N
Pointing Dec	52.330421	52.34384385633251	Primary exposure time	0.000000	3.2
Pointing Roll	119.407757	119.5952158064064			
SIM focus pos (mm)	-0.684267	-0.6828225247311905			
SIM defocus (mm)	0	0.001444936568705701			
SIM translation stage pos (mm)	-190.132523	-190.1400660498719			
SIM translation stage offset (mm)	0	0.00754346686406393			
Observation start time	164019514.184000	164018536.52961			
Observation start date	2003-03-14T08:57:30	2003-03-14T08:42:16			
Observation end time	164024474.184000	164024789.02988			
Observation end date	2003-03-14T10:20:10	2003-03-14T10:26:29			
Read mode	TIMED	TIMED			

2.3 Aspect



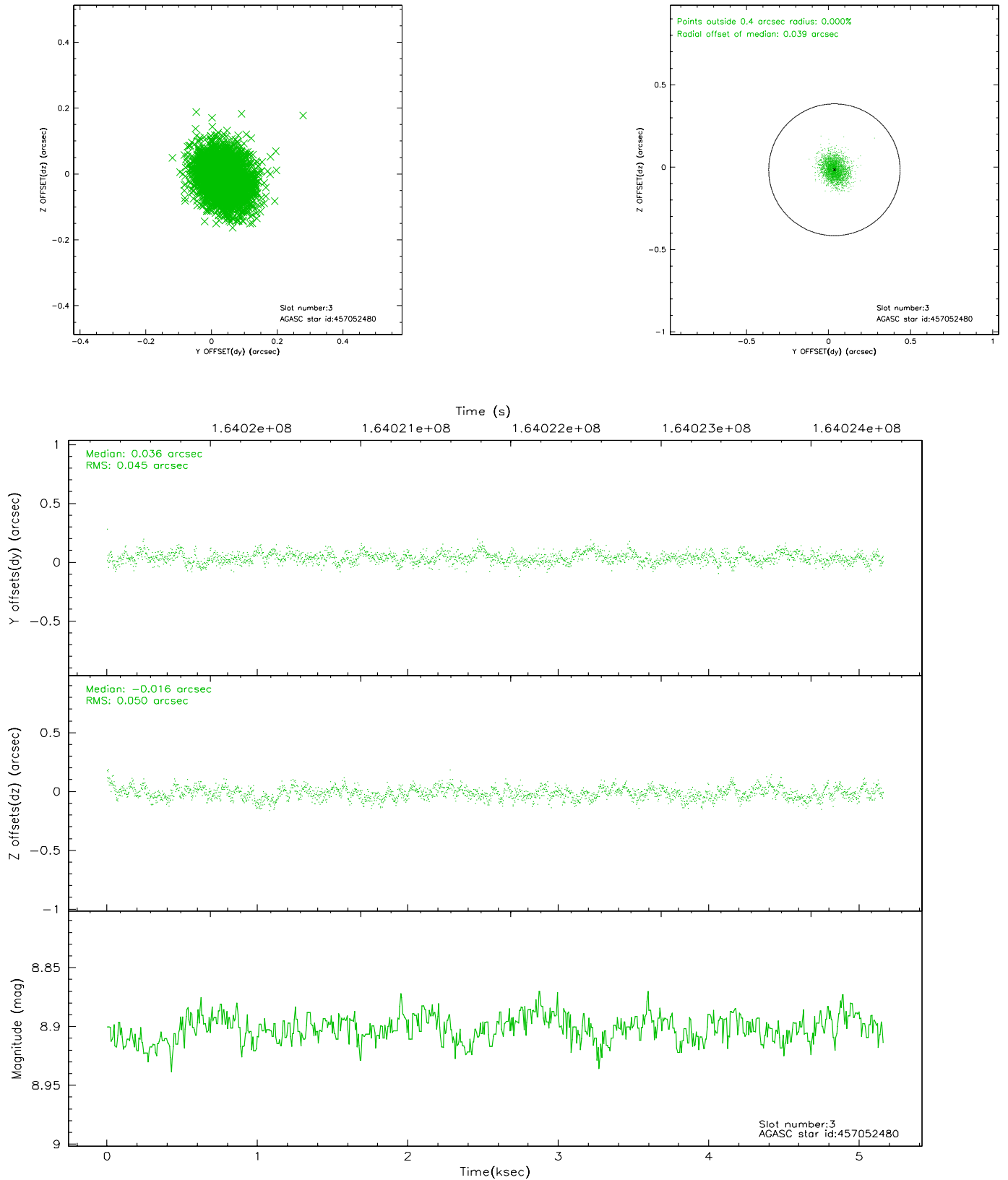


Slot Statistics

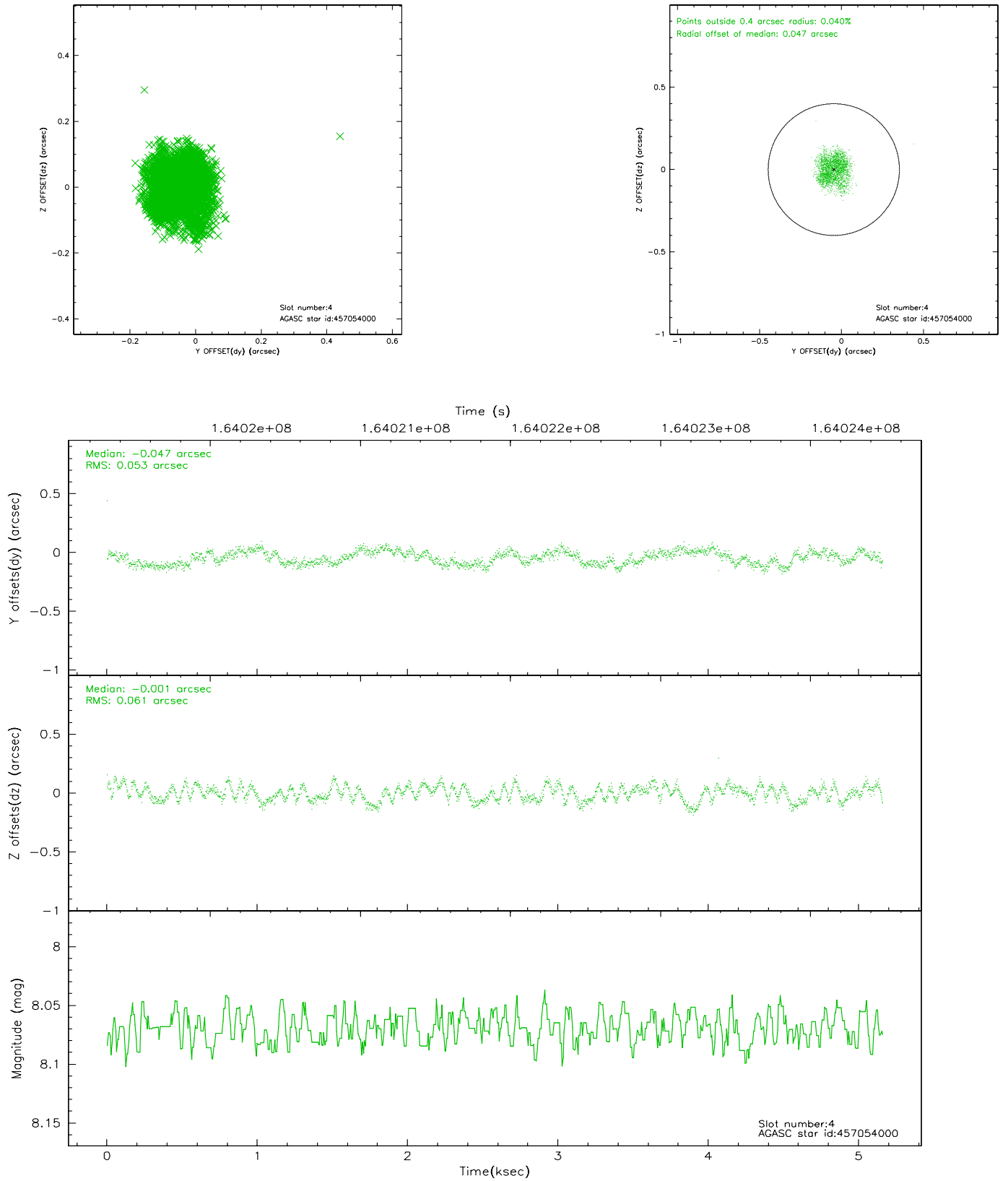
slot	status	id	mag	n_pts	med_dy	med_dz	dr1	dr2	ra	dec	mean_y	mean_z
0	FID	ACIS-S-2	7.10	1259	-0.001	0.015	0.006	0.011	0.000000	0.000000	-755.53	-1729.33
1	FID	ACIS-S-4	7.20	1259	-0.048	-0.003	0.005	0.008	0.000000	0.000000	2157.18	177.91
2	FID	ACIS-S-5	7.23	1259	0.019	-0.003	0.006	0.011	0.000000	0.000000	-1806.83	172.93
3	GUIDE	457052480	8.90	2517	0.036	-0.016	0.072	0.115	226.300607	52.017976	-476.67	1438.18
4	GUIDE	457054000	8.07	2518	-0.047	-0.001	0.088	0.129	227.461785	52.410832	-497.31	-1486.93
5	GUIDE	506993632	9.08	2518	0.003	0.047	0.087	0.136	227.059446	52.987072	1742.69	-1726.21
6	GUIDE	457051496	8.33	2517	-0.023	-0.176	0.077	0.117	225.793548	52.140332	465.85	2189.23
7	GUIDE	506993552	9.73	2469	0.034	0.156	0.117	0.195	227.693247	52.620854	-77.84	-2294.59

2.4 Star Slots

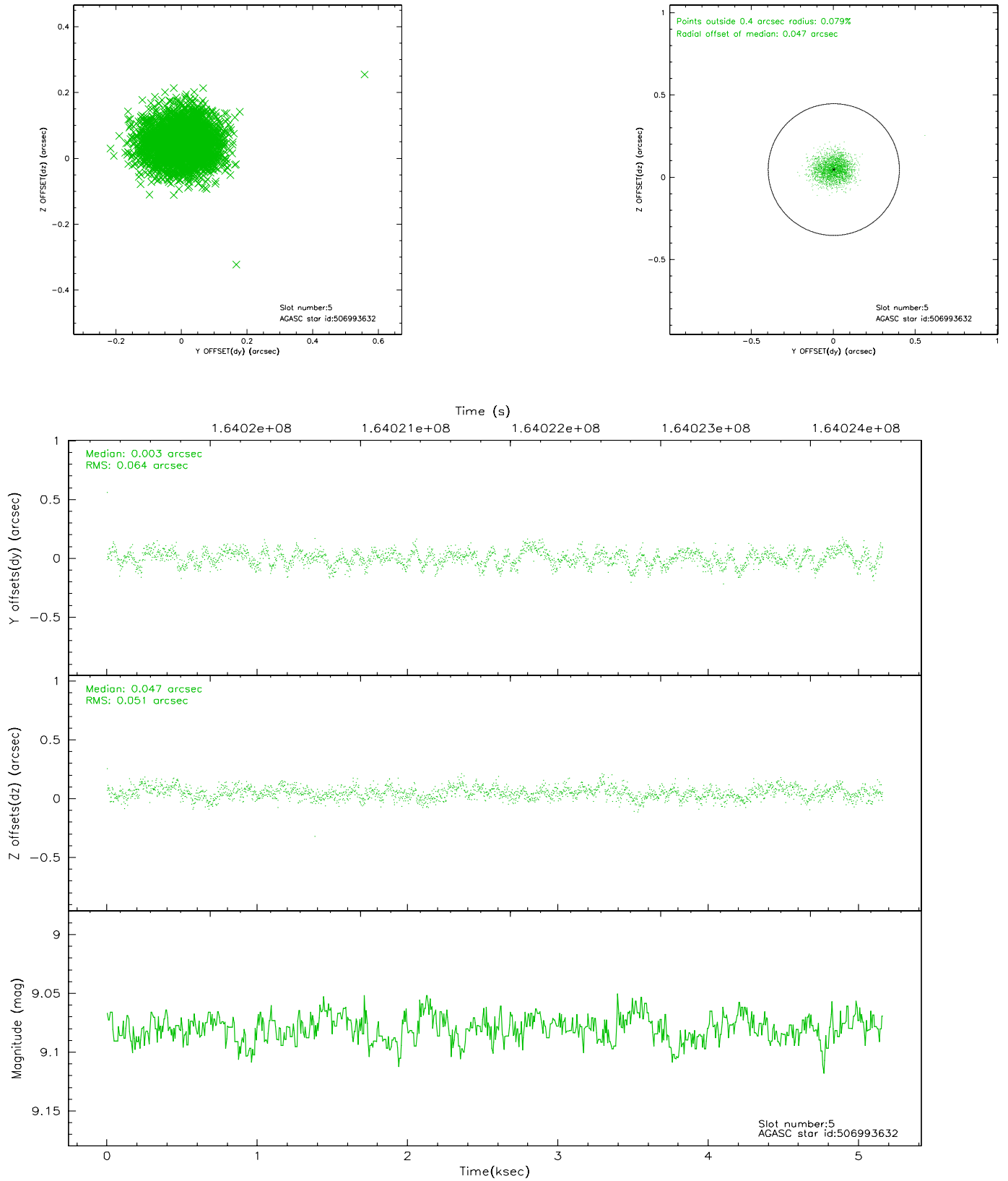
2.4.1 Slot 3



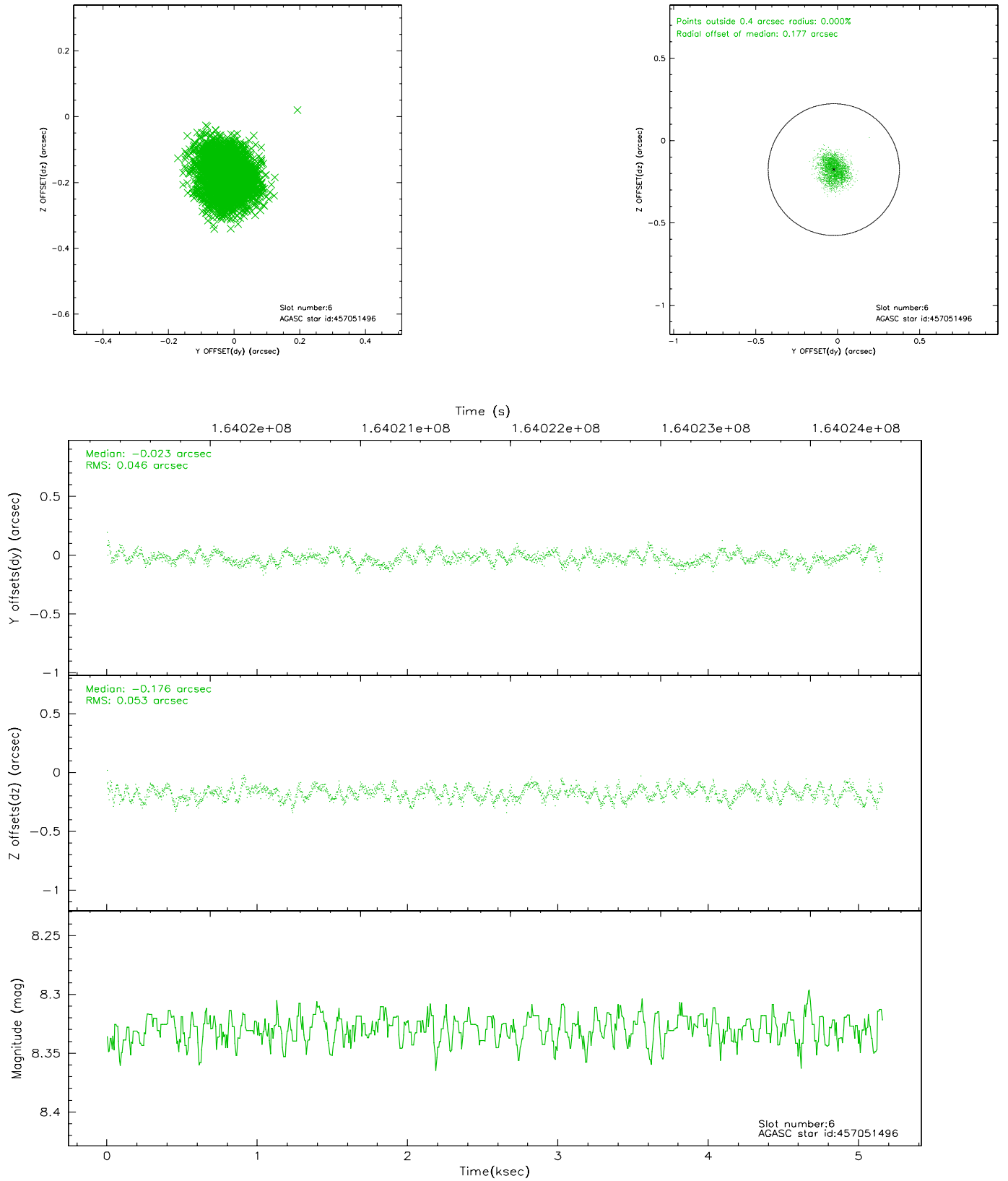
2.4.2 Slot 4



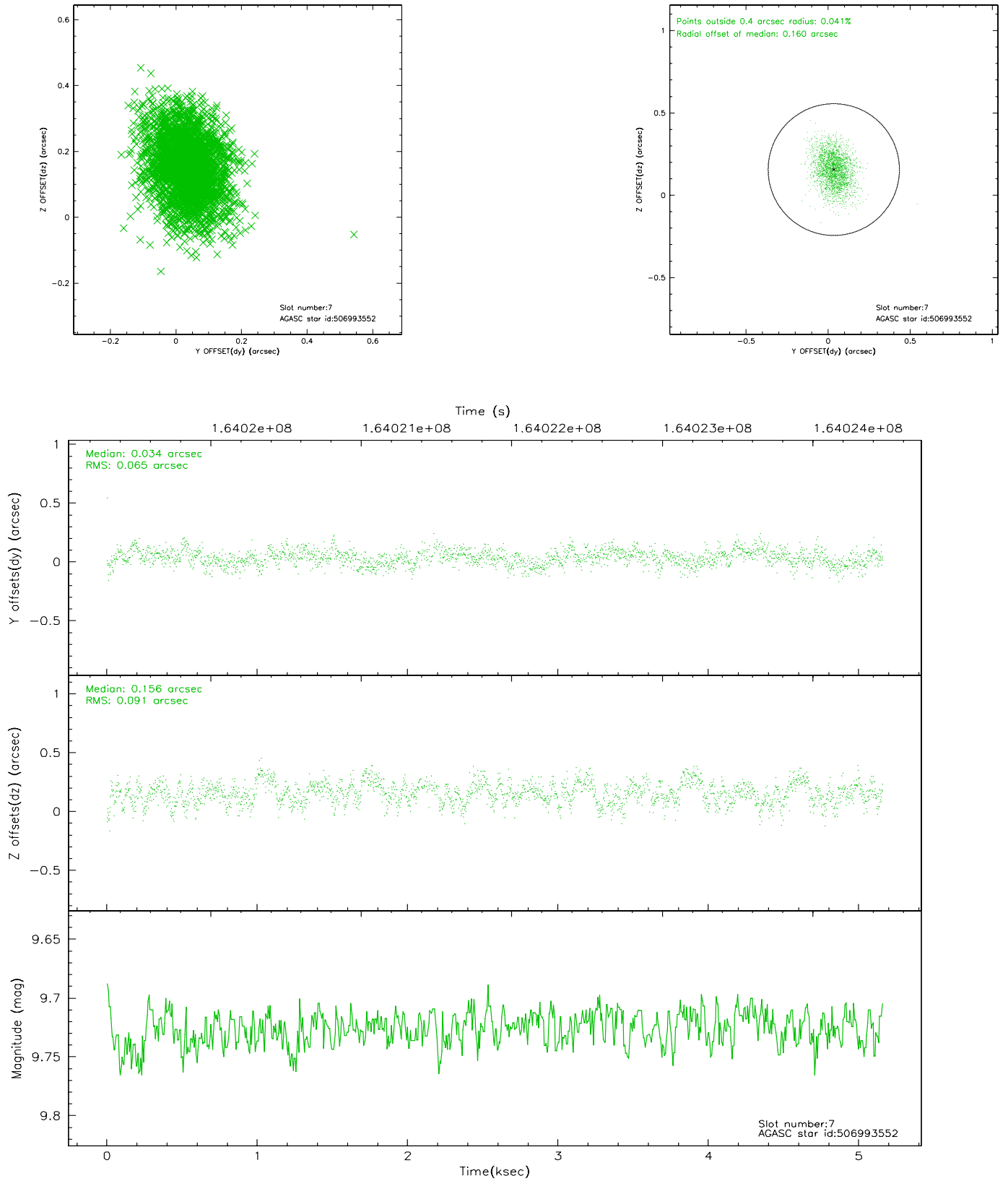
2.4.3 Slot 5



2.4.4 Slot 6

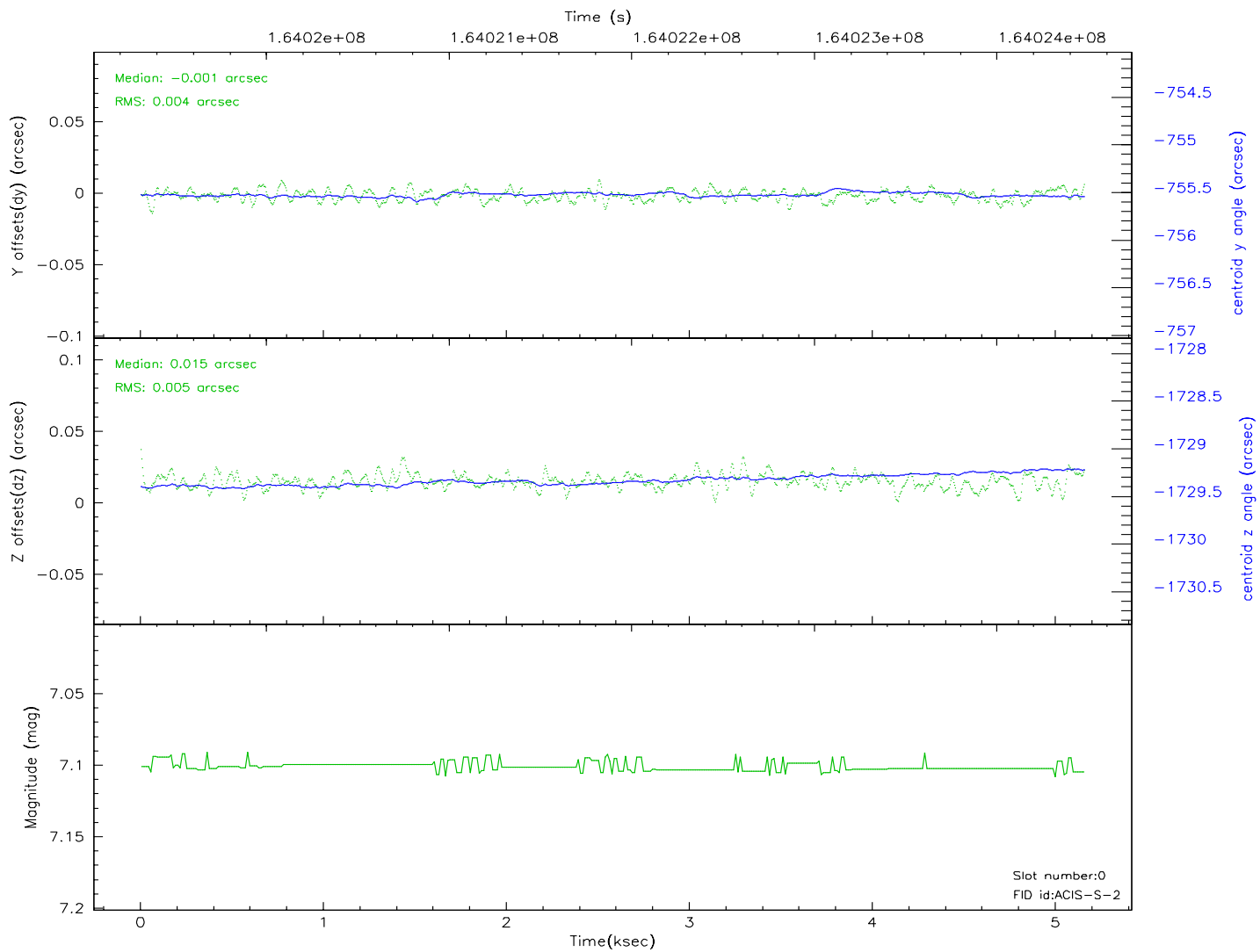
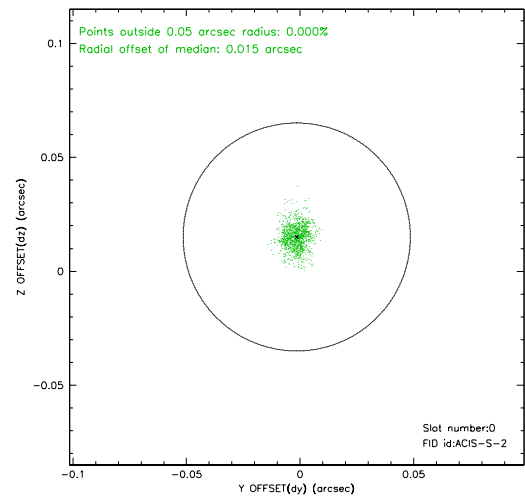
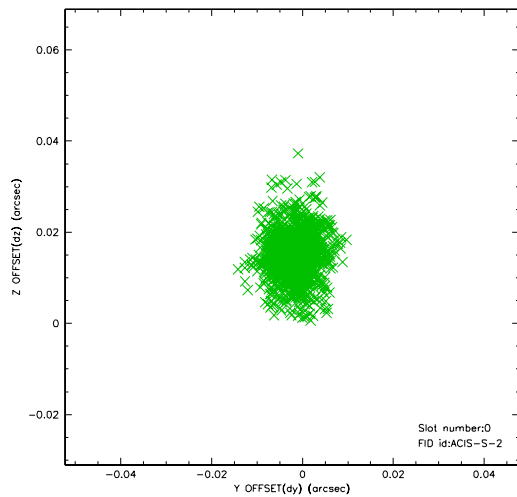


2.4.5 Slot 7

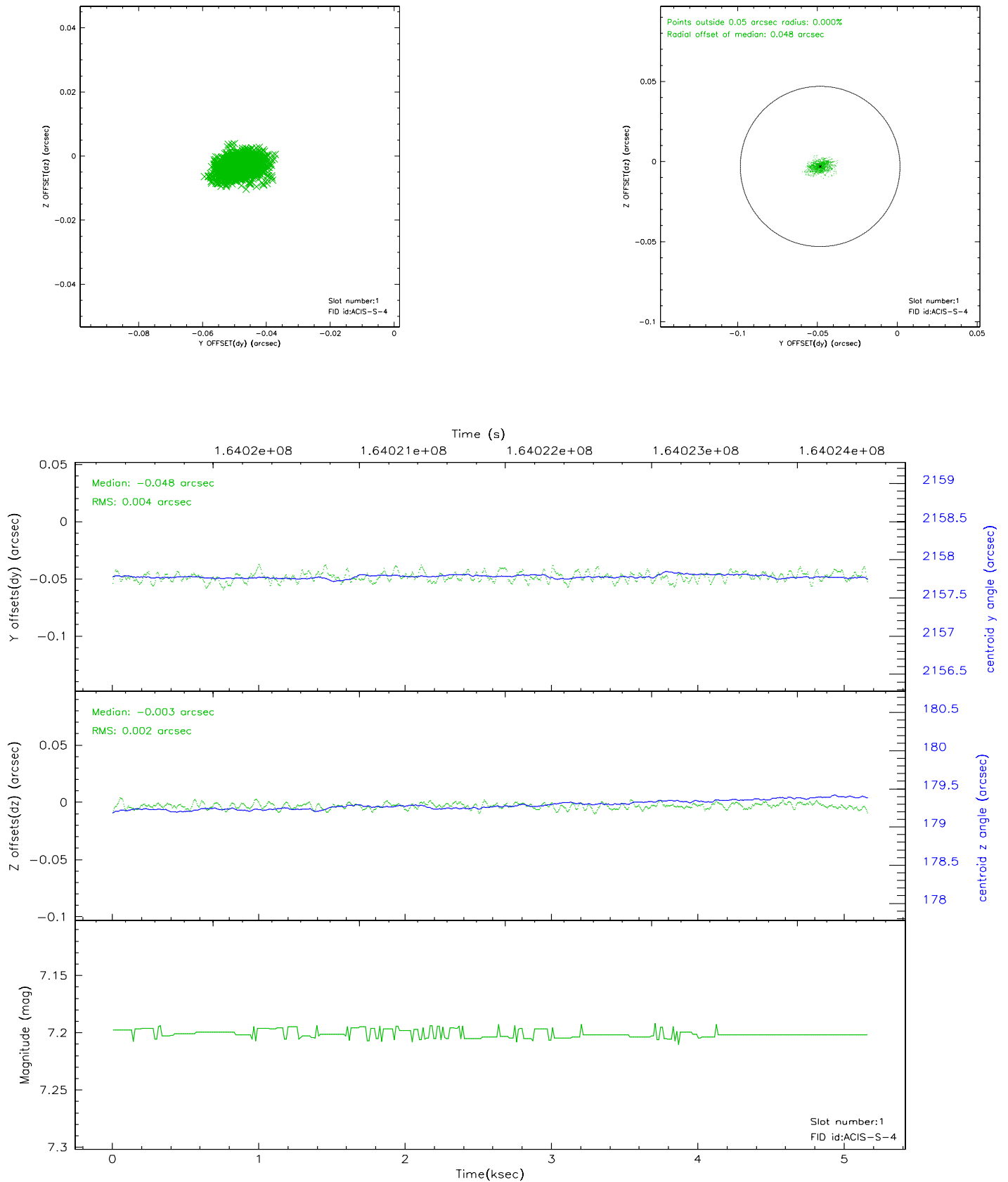


2.5 FID Slots

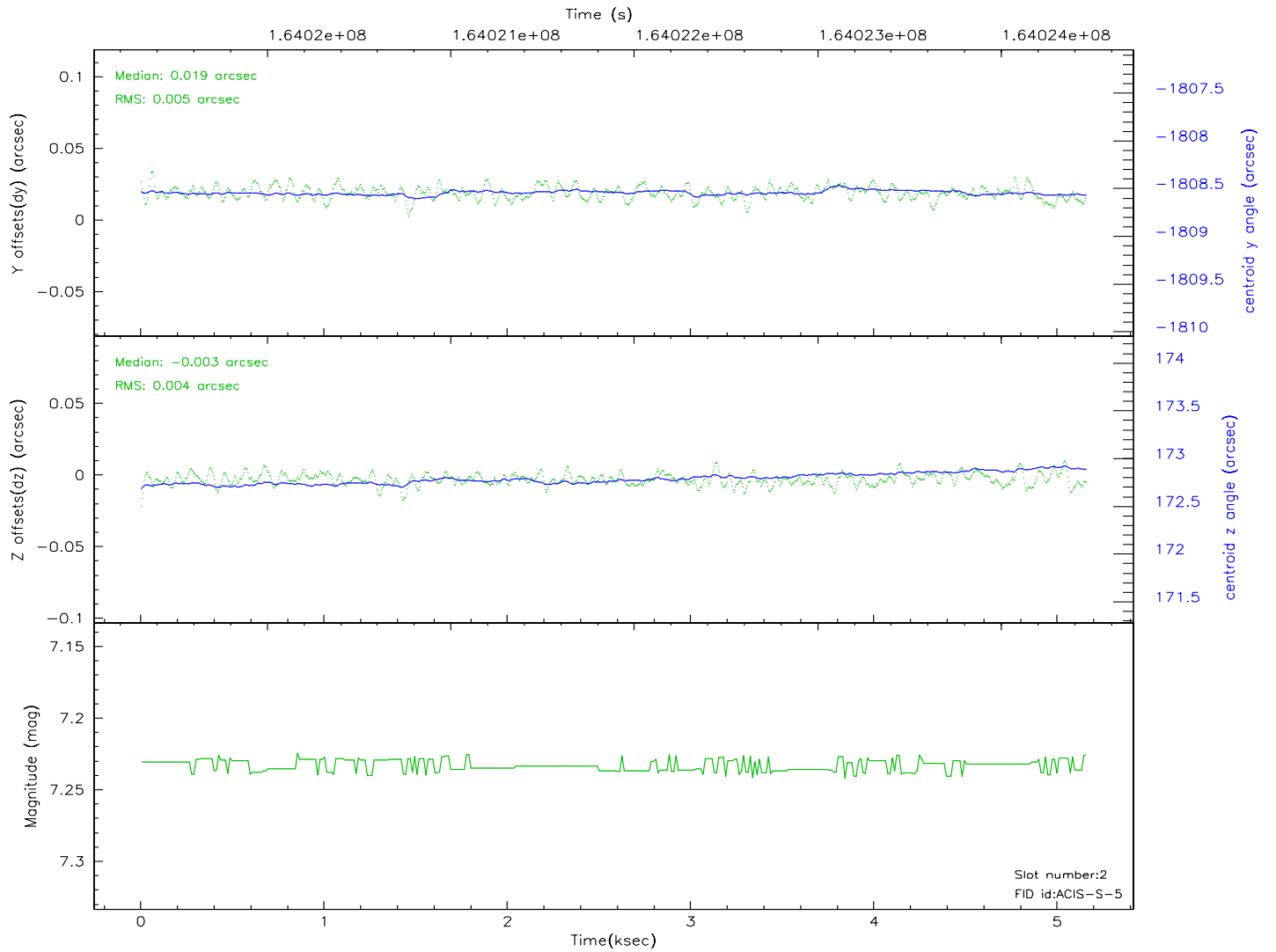
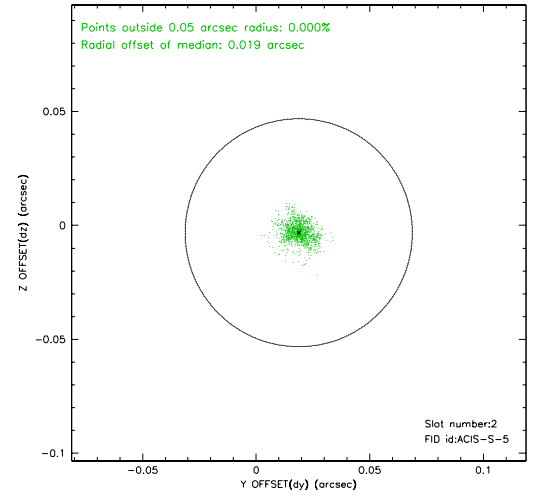
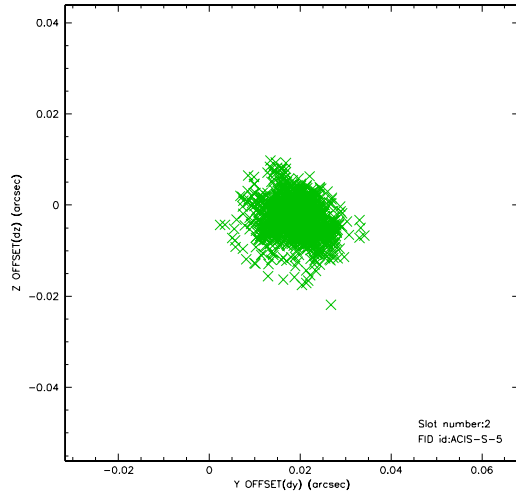
2.5.1 Slot 0



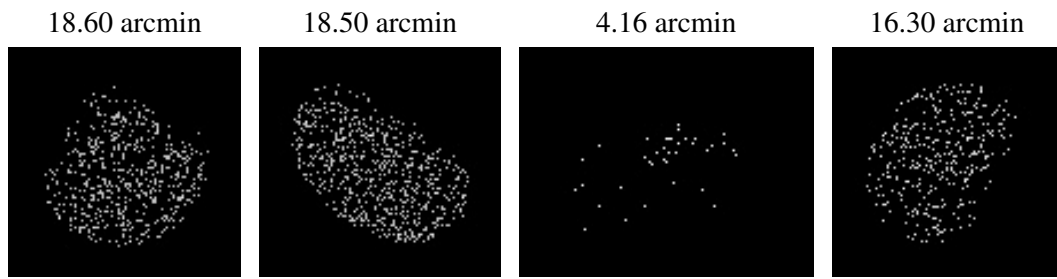
2.5.2 Slot 1



2.5.3 Slot 2



3 Point Sources



A Summary

A.1 Status

V&V Scientist	Beth Sundheim
V&V Date (YYYY-MM-DD)	2006.07.24
V&V Edition	1
V&V Disposition and Status	OK
V&V Charge Time	4.918

A.2 Comments