

V&V Reference Report

L2 ASCDS Version : 7.6.8

Observation 4069 - L2 Version 001
Chandra X-Ray Center

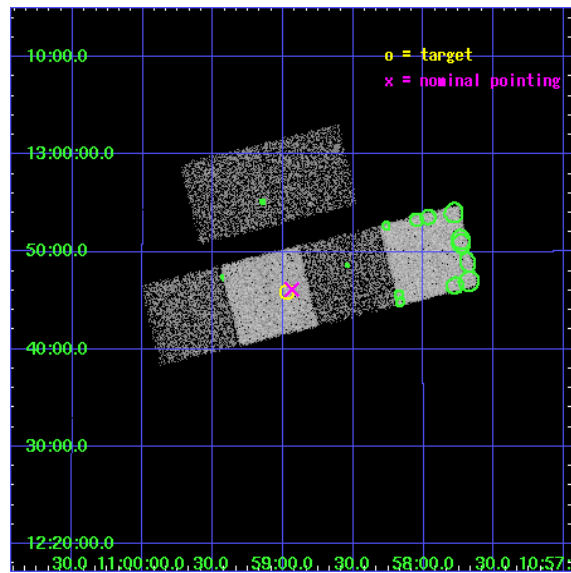
L2 Processing Date : Jul 22 2006

Contents

1	Front	2
2	OBI	3
2.1	OBI	3
2.1.1	Images	3
2.1.2	Bias	3
2.1.3	Parameters	4
2.1.4	Events	4
2.2	Compared Parameters	5
2.3	Aspect	6
2.4	Star Slots	9
2.4.1	Slot 3	9
2.4.2	Slot 4	10
2.4.3	Slot 5	11
2.4.4	Slot 6	12
2.4.5	Slot 7	13
2.5	FID Slots	14
2.5.1	Slot 0	14
2.5.2	Slot 1	15
2.5.3	Slot 2	16
3	Point Sources	17
A	Summary	18
A.1	Status	18
A.2	Comments	18

1 Front

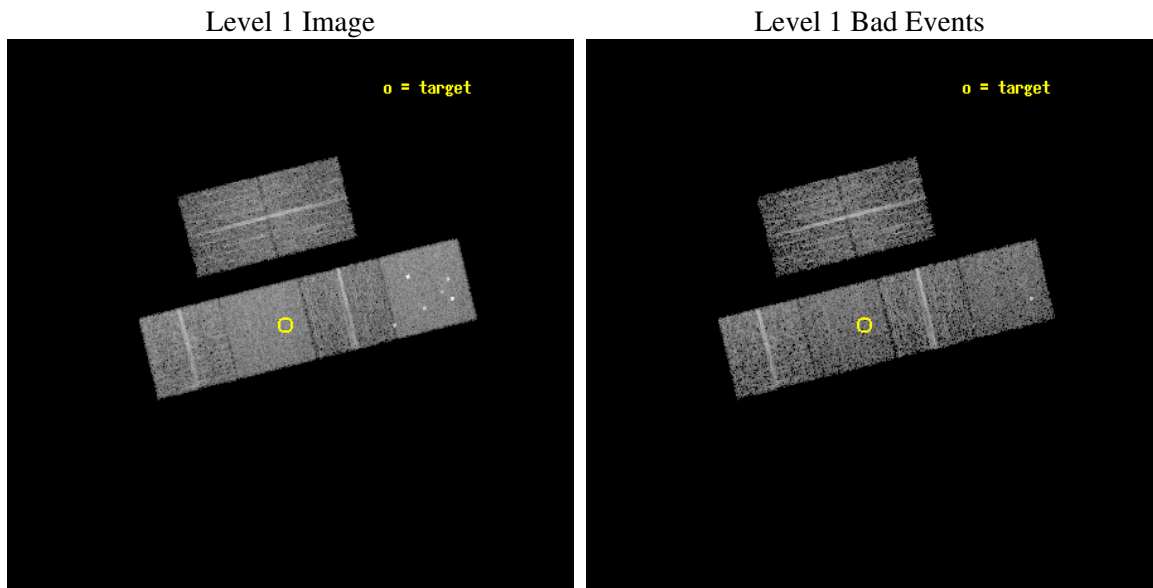
seq_num	700748
obs_id	4069
title	A CHANDRA SURVEY OF THE MOST LUMINOUS QUASARS AT $Z > 4$
observer	Dr. Cristian Vignali
object	PSS 1058+1245
dtcycle	0
cycle	P
ra_targ	164.743333
dec_targ	12.765222
ra_nom	164.7342454534
dec_nom	12.769226054631
roll_nom	166.00672196971
revision	3
ontime	5116.7999809384
livetime	5052.0079786127
ontime2	5116.7999809384
ontime3	5116.7999809384
ontime5	5116.7999809384
ontime6	5116.7999809384
ontime7	5116.7999809384
ontime8	5116.7999809384
l2events	49072



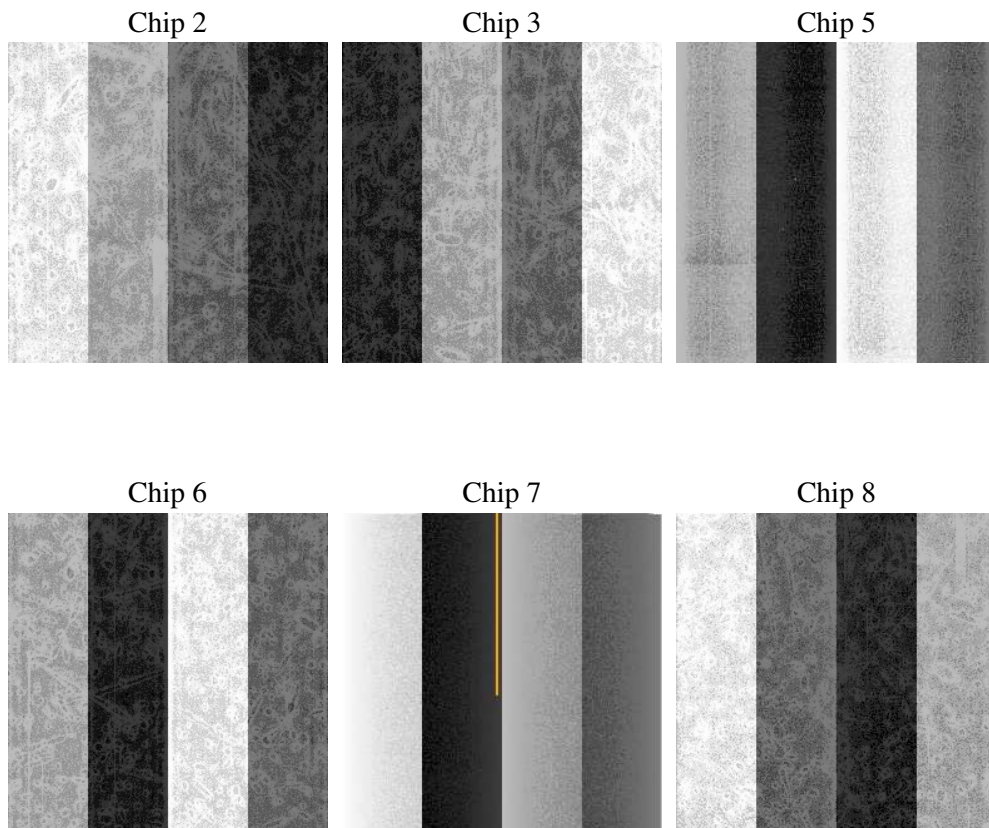
2 OBI

2.1 OBI

2.1.1 Images



2.1.2 Bias



2.1.3 Parameters

obi_num	1
ascdsver	7.6.8
caldsver	3.2.2
date	2006-07-22T12:11:08
revision	3

sched_exp_time	5000.000000
ontime	5120.7933454812
ontime2	5120.7933255732
ontime3	5120.7933454812
ontime5	5120.7933454812
ontime6	5120.7933454812
ontime7	5120.7933454812
ontime8	5120.7933454812
l1events	233964

2.1.4 Events

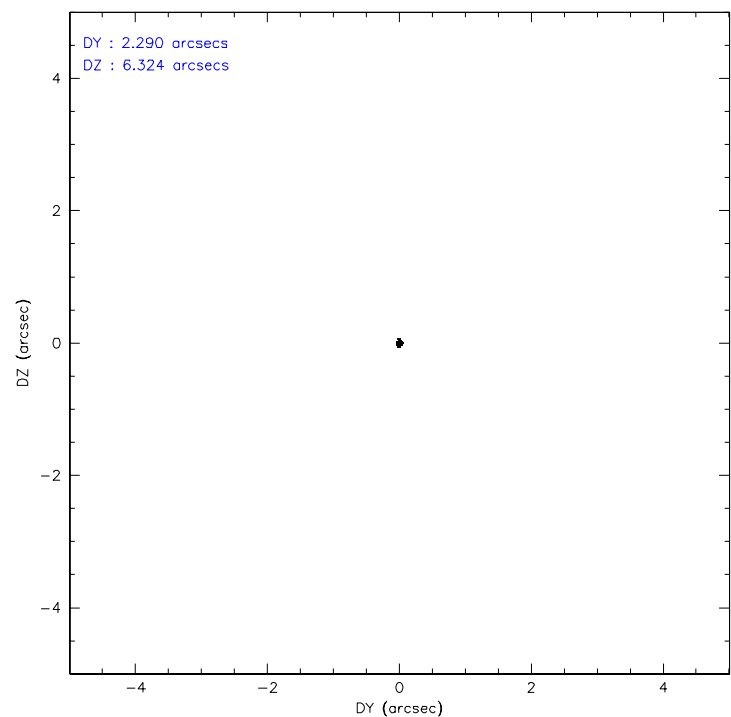
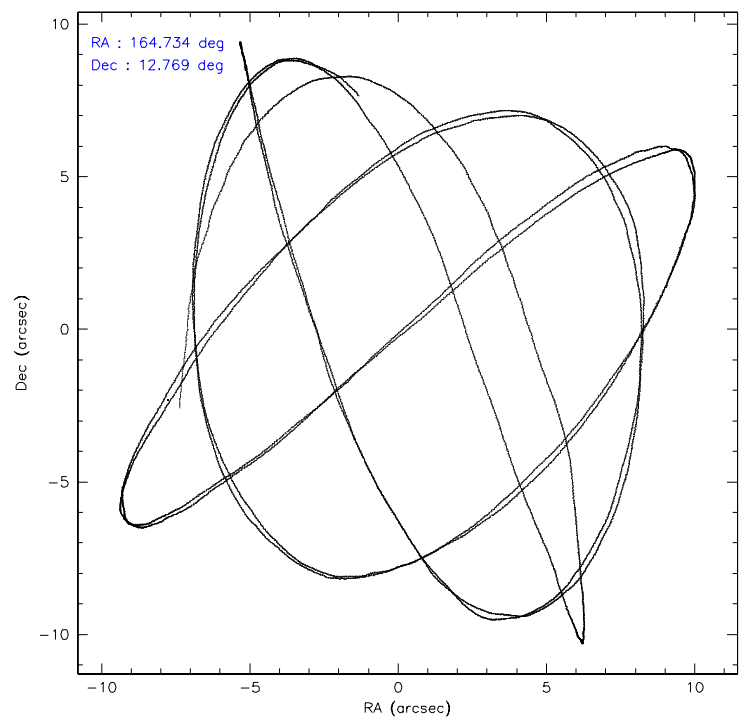
	ccd 2	ccd 3	ccd 5	ccd 6	ccd 7	ccd 8
level 1 events	32209	30884	50305	34994	43905	41667
rejected events	28518	27128	26985	31215	27476	33412
rejected %	88%	87%	53%	89%	62%	80%

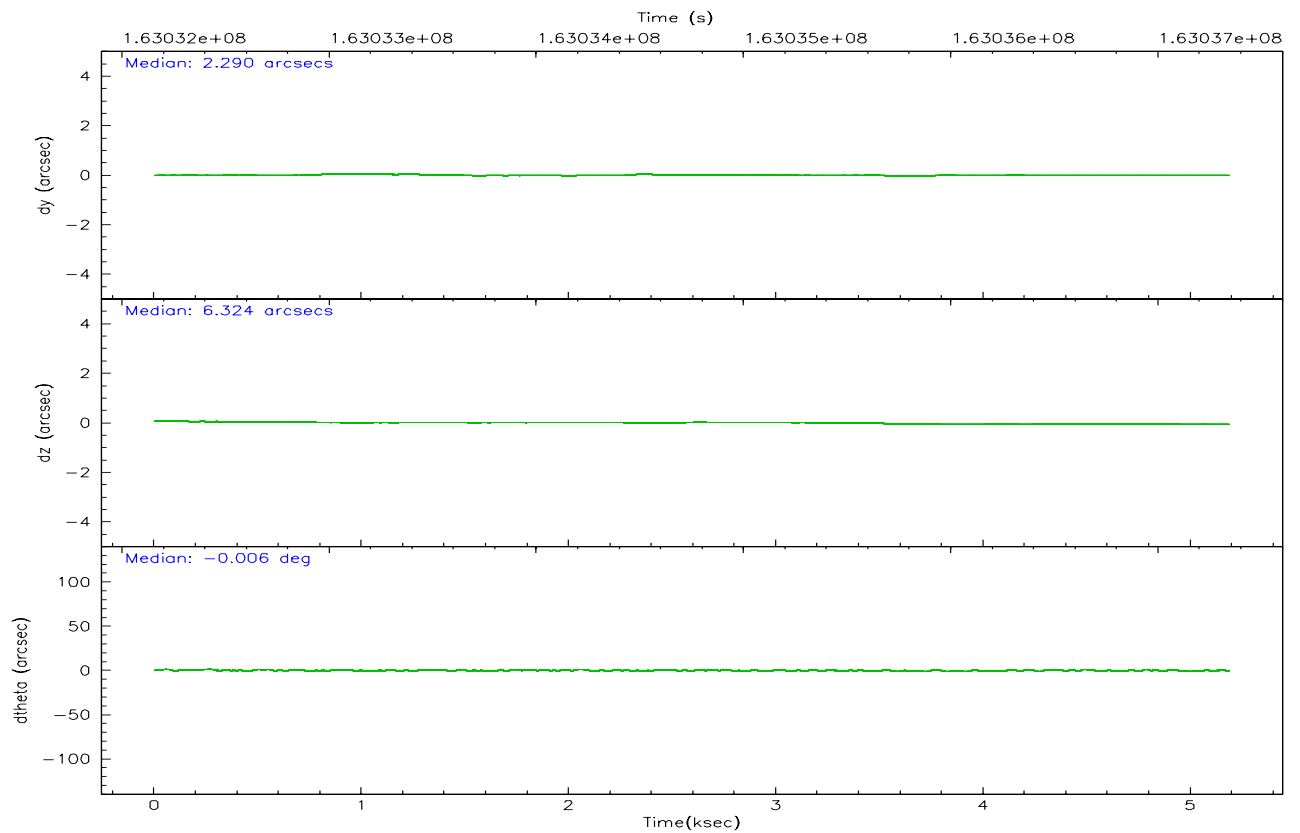
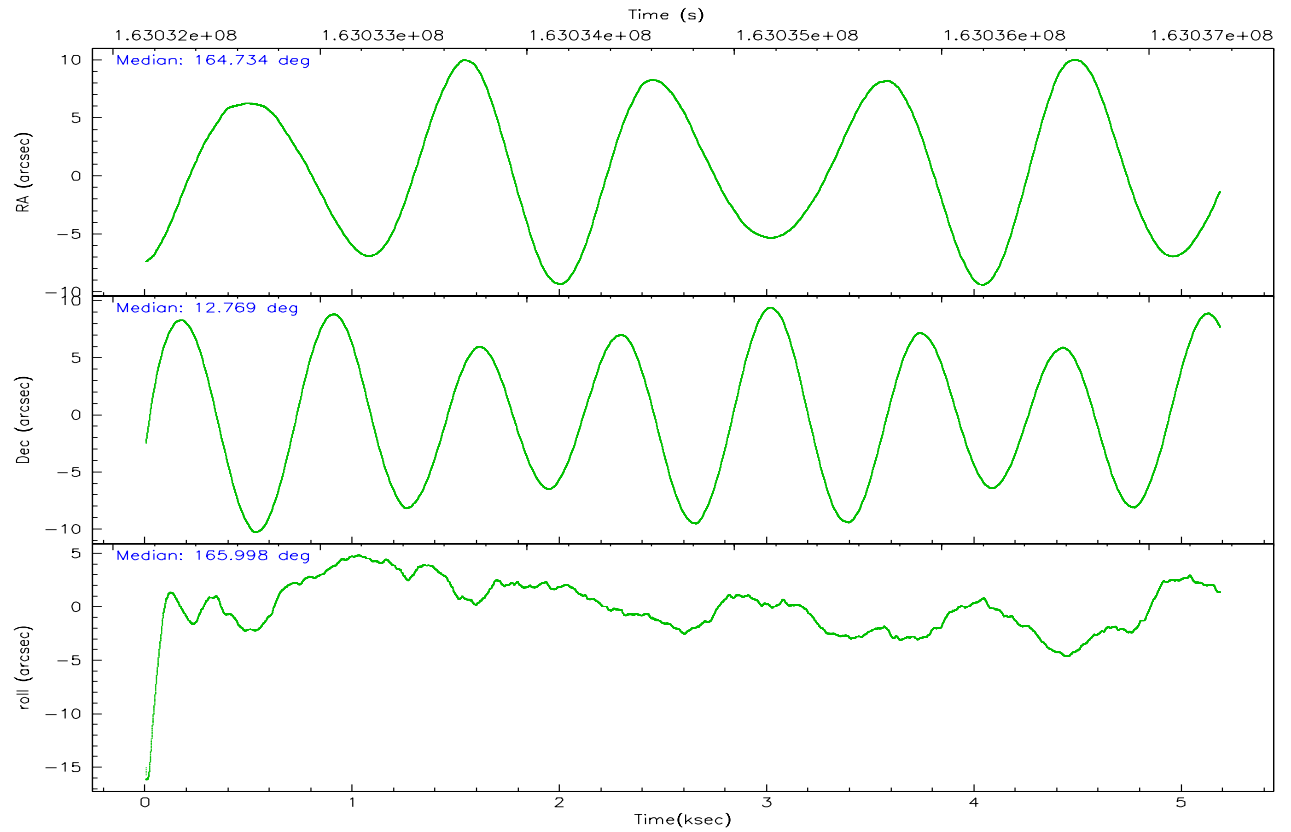
	ccd 2	ccd 3	ccd 5	ccd 6	ccd 7	ccd 8
grade 0 events	1627	1692	3187	1525	958	2569
	5%	5%	6%	4%	2%	6%
grade 1 events	17	21	77	18	26	23
	0%	0%	0%	0%	0%	0%
grade 2 events	679	660	7148	755	4012	1895
	2%	2%	14%	2%	9%	4%
grade 3 events	340	384	487	396	830	837
	1%	1%	0%	1%	1%	2%
grade 4 events	357	367	438	363	801	771
	1%	1%	0%	1%	1%	1%
grade 5 events	1238	1429	2299	1549	2899	1843
	3%	4%	4%	4%	6%	4%
grade 6 events	688	654	12079	741	9838	2187
	2%	2%	24%	2%	22%	5%
grade 7 events	27263	25677	24590	29647	24541	31542
	84%	83%	48%	84%	55%	75%

2.2 Compared Parameters

Parameter	Planned	Actual	Parameter	Planned	Actual
Instrument	ACIS	ACIS	Obspar format version number	6	6
Detector	ACIS-235678	ACIS-235678	Obspar file type	PREDICTED	ACTUAL
Grating	NONE	NONE	Obspar update status	NONE	UPDATED
Data mode	FAINT	FAINT	On-chip summing requested	N	N
Observation mode	POINTING	POINTING	Subarray requested	NONE	NONE
Pointing RA	164.761019	164.7342454534	Alternating exposures requested	N	N
Pointing Dec	12.777032	12.76922605463143	Primary exposure time	0.000000	3.2
Pointing Roll	165.844208	166.0067219697082			
SIM focus pos (mm)	-0.684267	-0.6828225247311905			
SIM defocus (mm)	0	0.001444936568705701			
SIM translation stage pos (mm)	-190.132523	-190.1425803651734			
SIM translation stage offset (mm)	0	0.01005778216563158			
Observation start time	163032349.184000	163031310.30057			
Observation start date	2003-03-02T22:44:45	2003-03-02T22:28:30			
Observation end time	163037349.184000	163038360.25086			
Observation end date	2003-03-03T00:08:05	2003-03-03T00:26:00			
Read mode	TIMED	TIMED			

2.3 Aspect



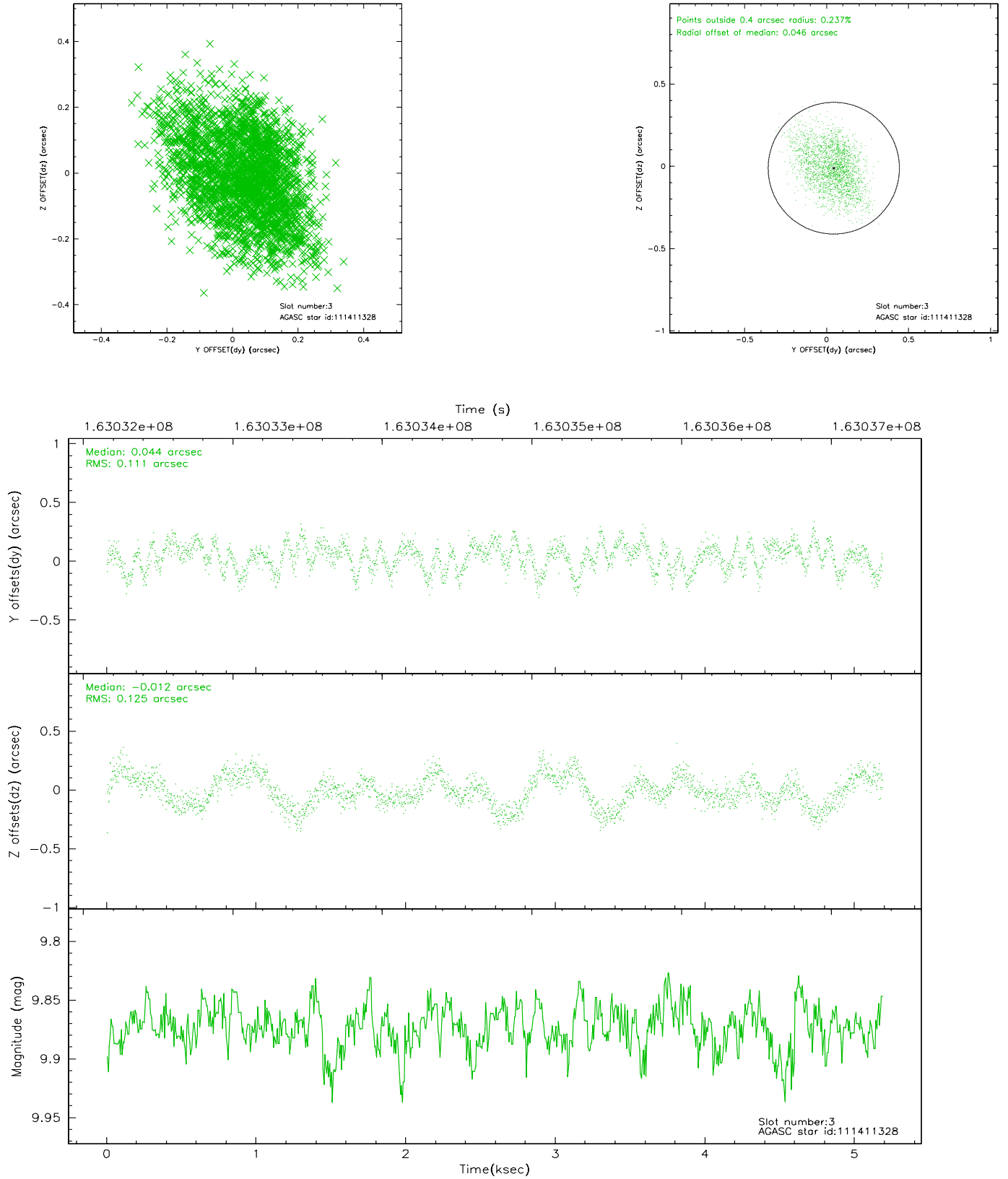


Slot Statistics

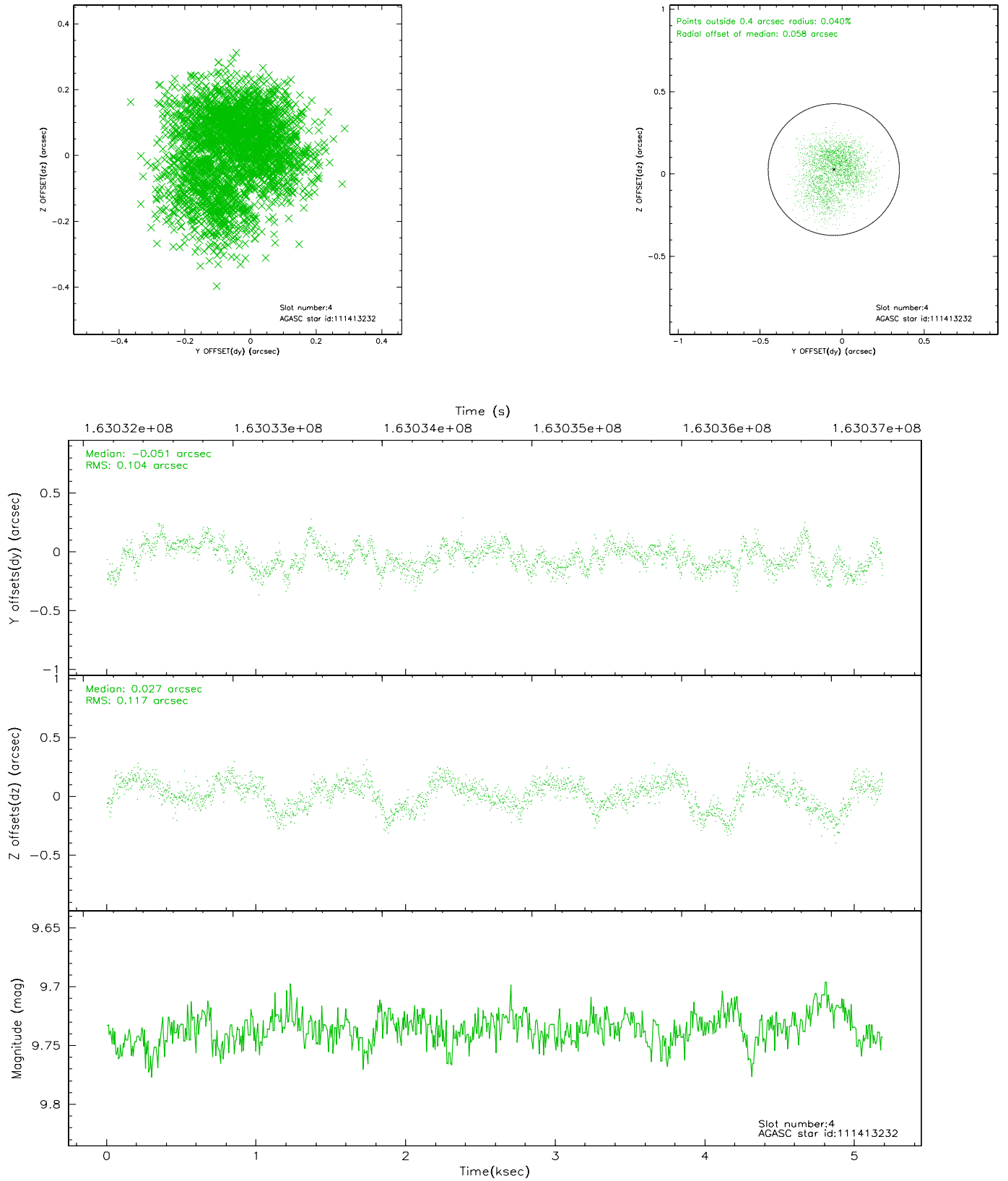
slot	status	id	mag	n_pts	med_dy	med_dz	dr1	dr2	ra	dec	mean_y	mean_z
0	FID	ACIS-S-1	7.19	1265	0.005	-0.012	0.007	0.012	0.000000	0.000000	941.14	-1723.05
1	FID	ACIS-S-4	7.21	1265	-0.060	0.010	0.006	0.010	0.000000	0.000000	2159.11	179.95
2	FID	ACIS-S-5	7.24	1265	0.028	0.015	0.005	0.010	0.000000	0.000000	-1806.22	174.82
3	GUIDE	111411328	9.87	2529	0.044	-0.012	0.177	0.291	164.980954	12.081972	-1363.06	2236.69
4	GUIDE	111413232	9.74	2529	-0.051	0.027	0.170	0.263	164.555622	12.408277	374.68	1464.85
5	GUIDE	111415064	9.77	2528	-0.012	-0.048	0.341	0.463	165.057861	12.389176	-1353.47	1098.65
6	GUIDE	111811832	9.27	2528	0.096	-0.079	0.107	0.168	164.435186	12.713926	1053.40	500.37
7	GUIDE	111812400	9.49	2529	-0.053	0.101	0.092	0.144	164.475748	13.334413	1460.56	-1700.99

2.4 Star Slots

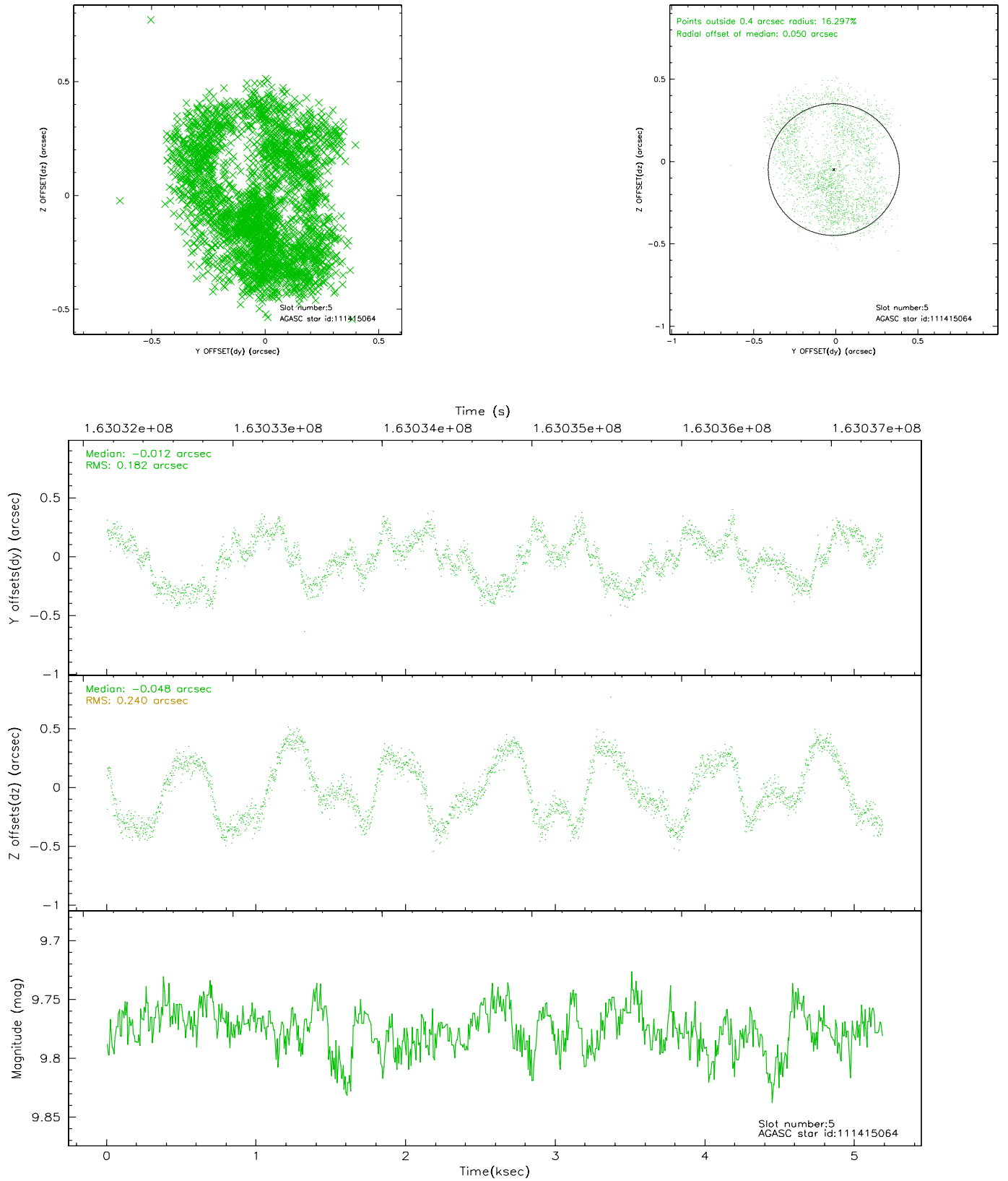
2.4.1 Slot 3



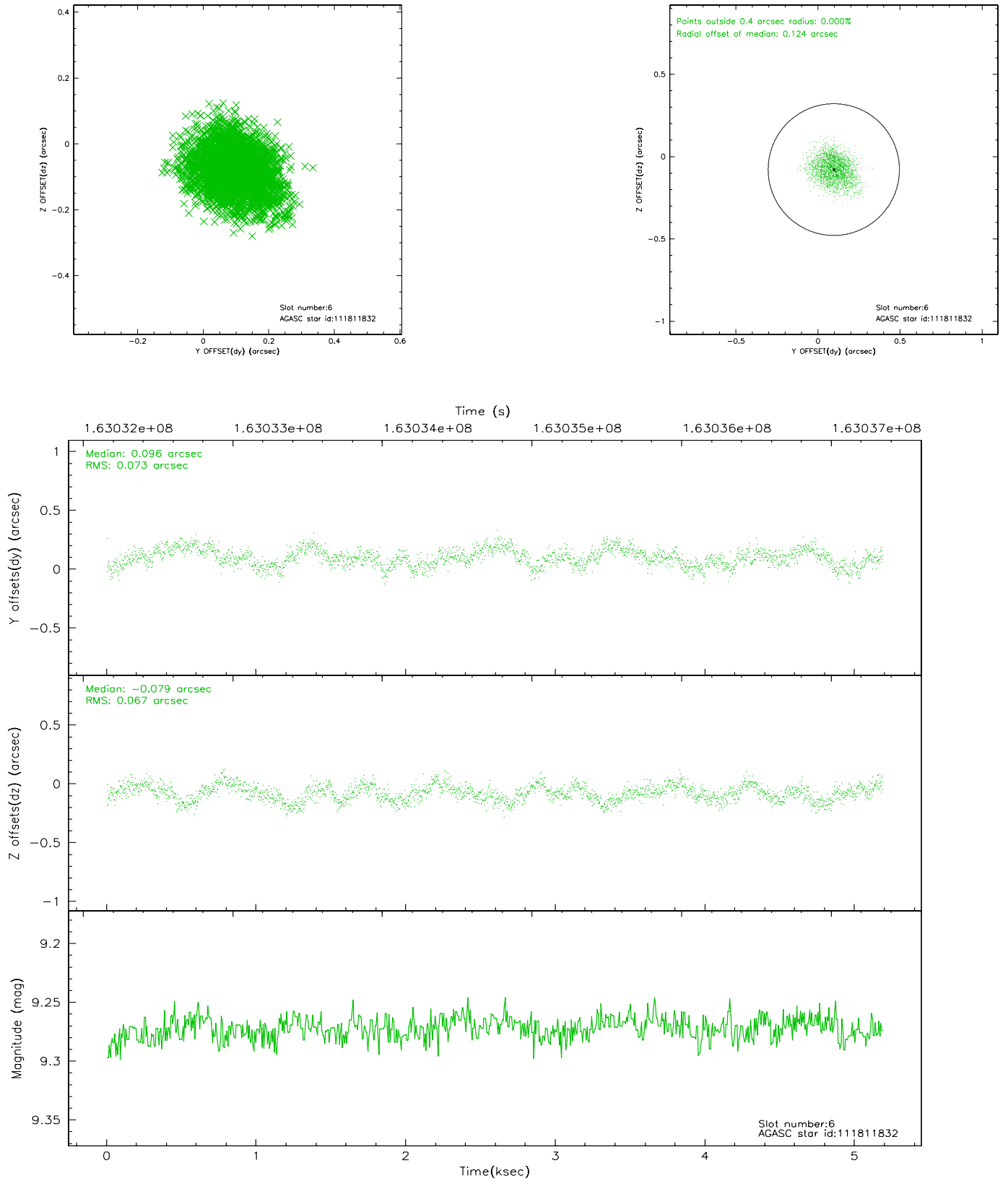
2.4.2 Slot 4



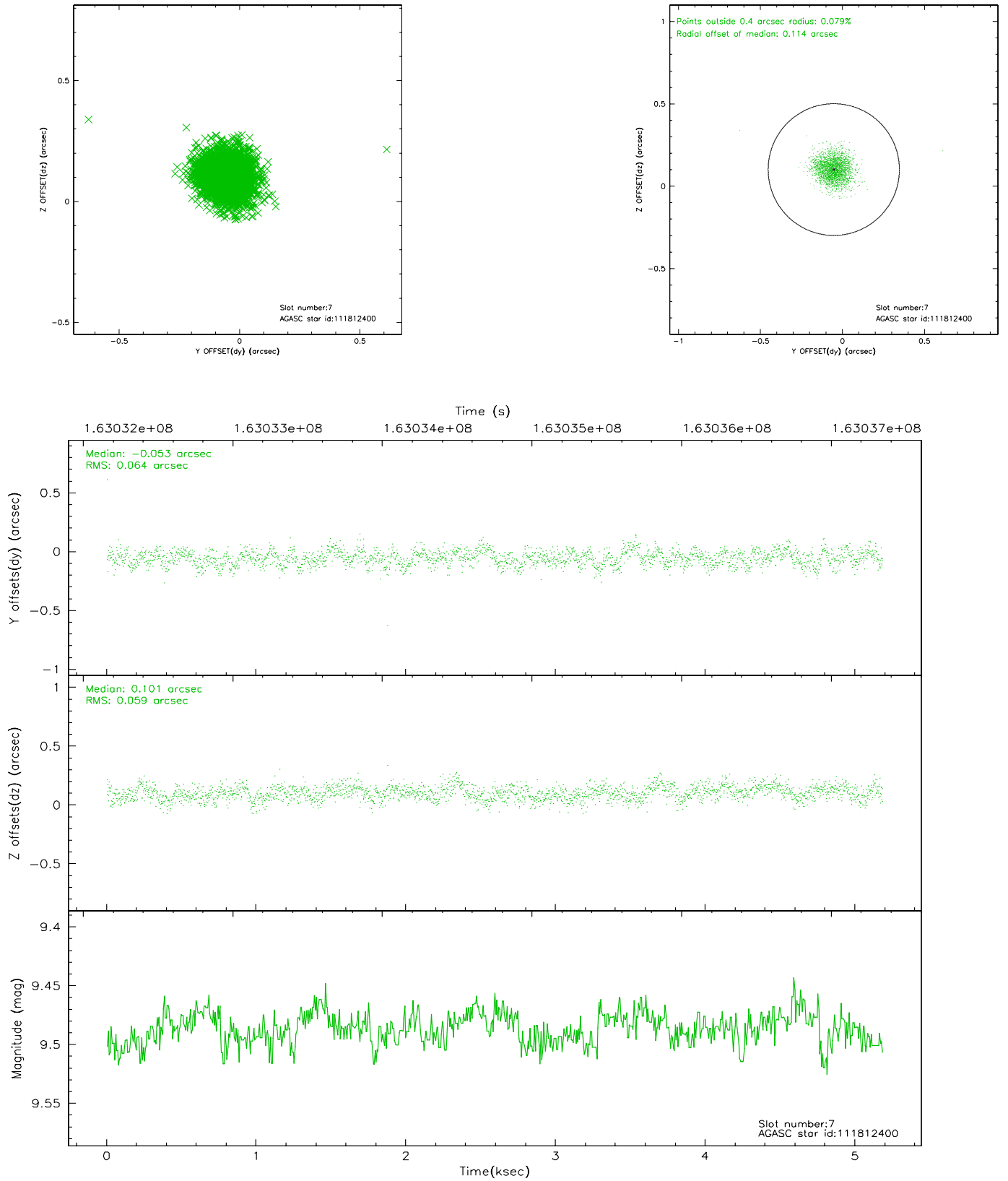
2.4.3 Slot 5



2.4.4 Slot 6

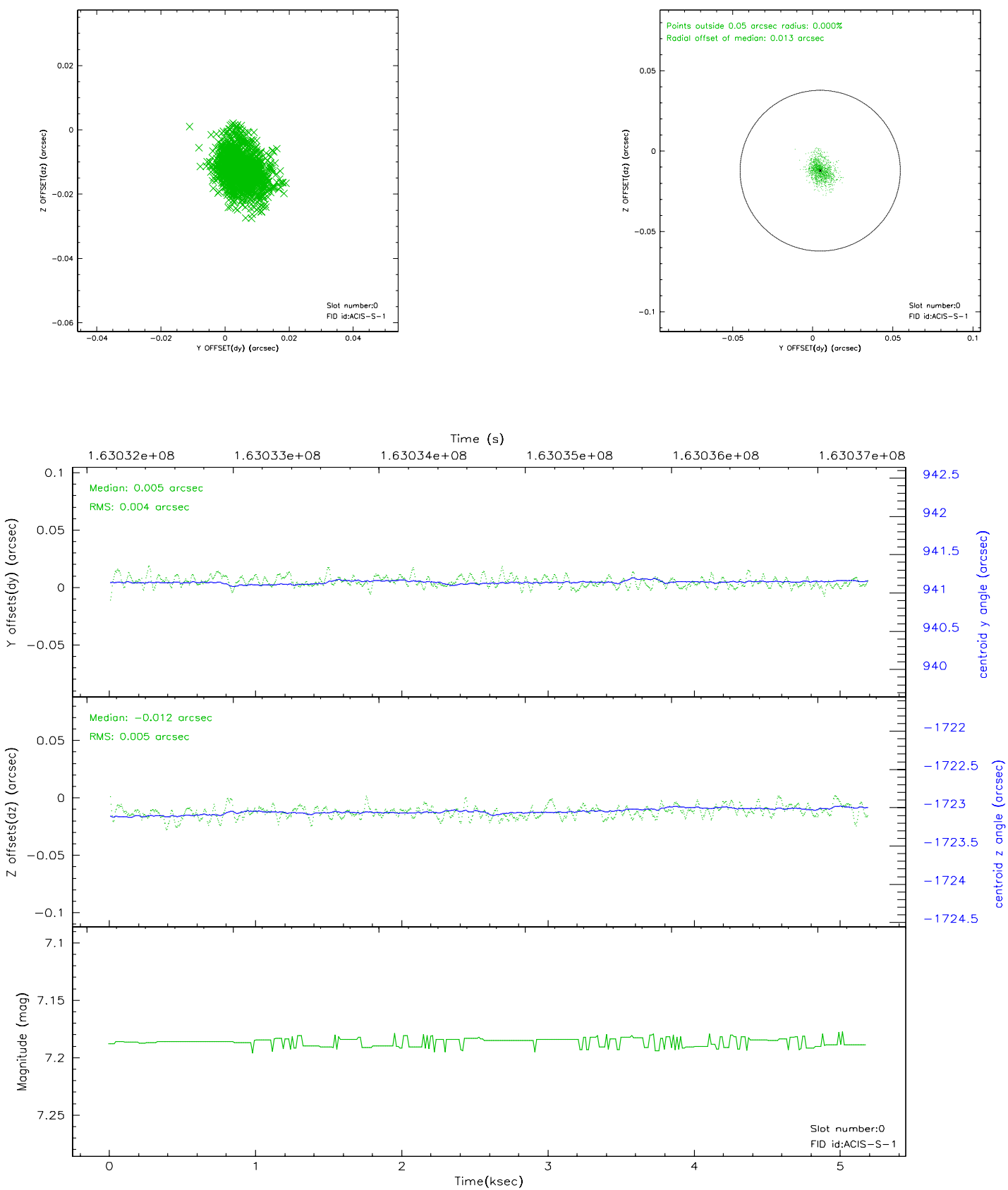


2.4.5 Slot 7

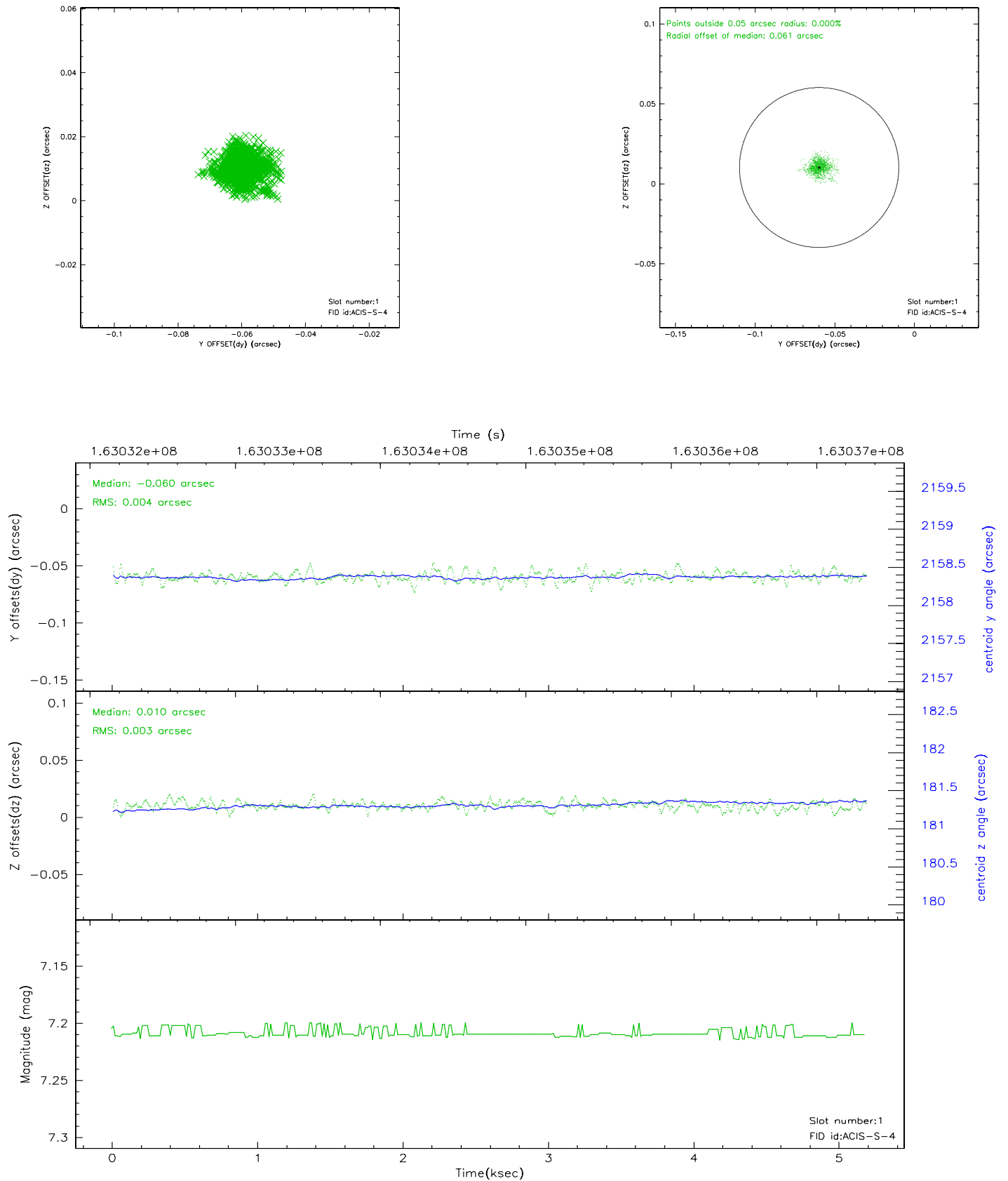


2.5 FID Slots

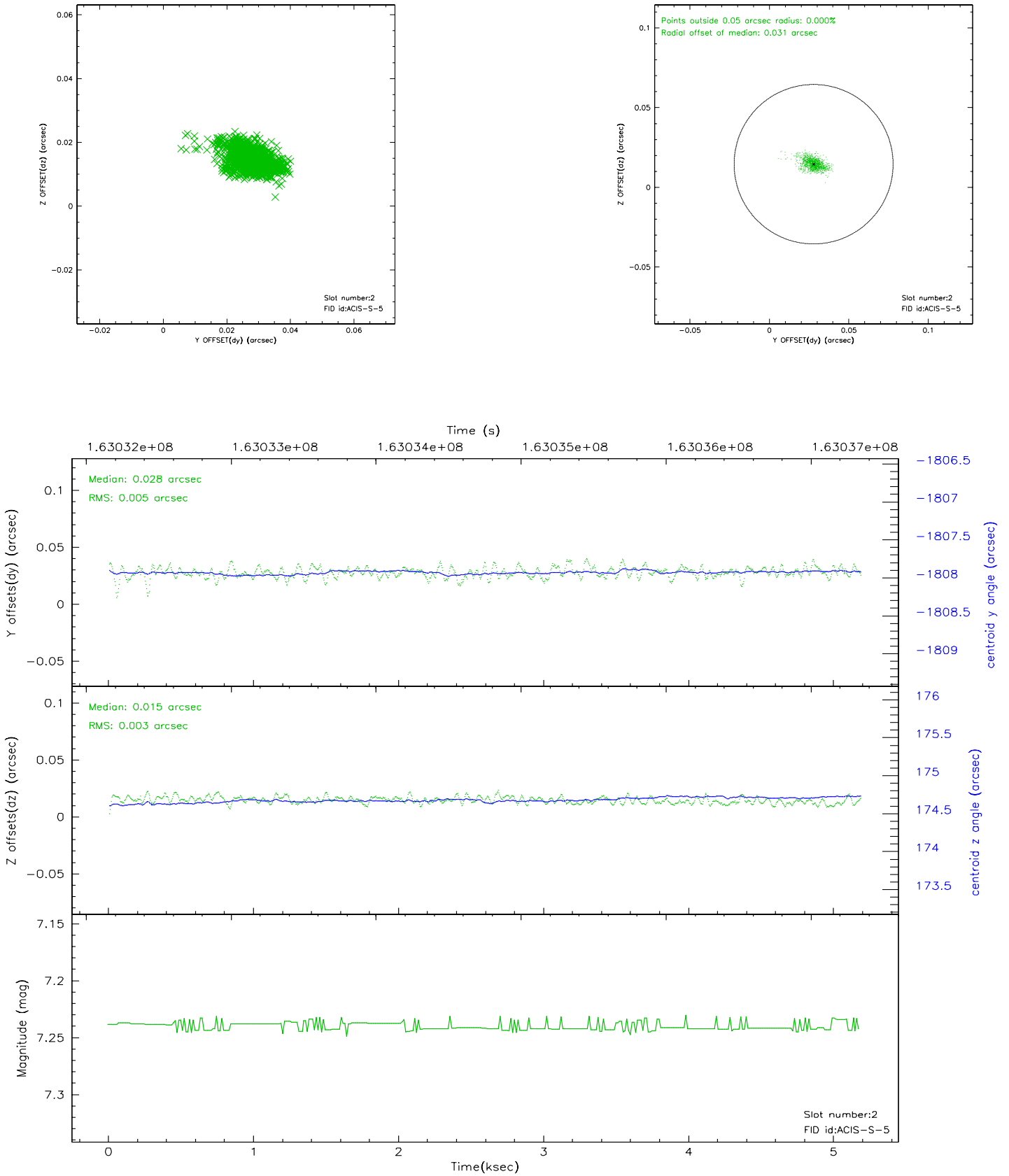
2.5.1 Slot 0



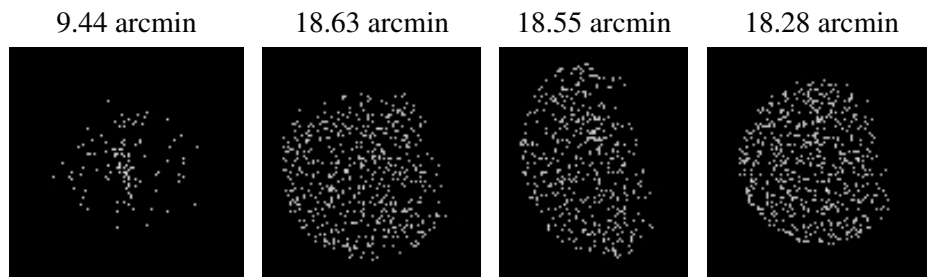
2.5.2 Slot 1



2.5.3 Slot 2



3 Point Sources



A Summary

A.1 Status

V&V Scientist	Beth Sundheim
V&V Date (YYYY-MM-DD)	2006.07.23
V&V Edition	1
V&V Disposition and Status	OK
V&V Charge Time	5.116

A.2 Comments