

V&V Reference Report

L2 ASCDS Version : 7.6.9

Observation 4059 - L2 Version 001
Chandra X-Ray Center

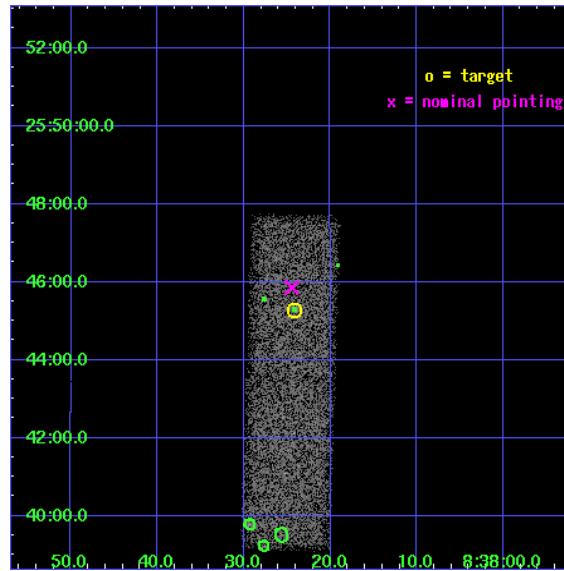
L2 Processing Date : Oct 18 2006

Contents

1	Front	2
2	OBI	3
2.1	OBI	3
2.1.1	Images	3
2.1.2	Bias	3
2.1.3	Parameters	4
2.1.4	Events	4
2.2	Compared Parameters	5
2.3	Aspect	6
2.4	Star Slots	9
2.4.1	Slot 3	9
2.4.2	Slot 4	10
2.4.3	Slot 5	11
2.4.4	Slot 6	12
2.4.5	Slot 7	13
2.5	FID Slots	14
2.5.1	Slot 0	14
2.5.2	Slot 1	15
2.5.3	Slot 2	16
3	Point Sources	17
A	Summary	18
A.1	Status	18
A.2	Comments	18

1 Front

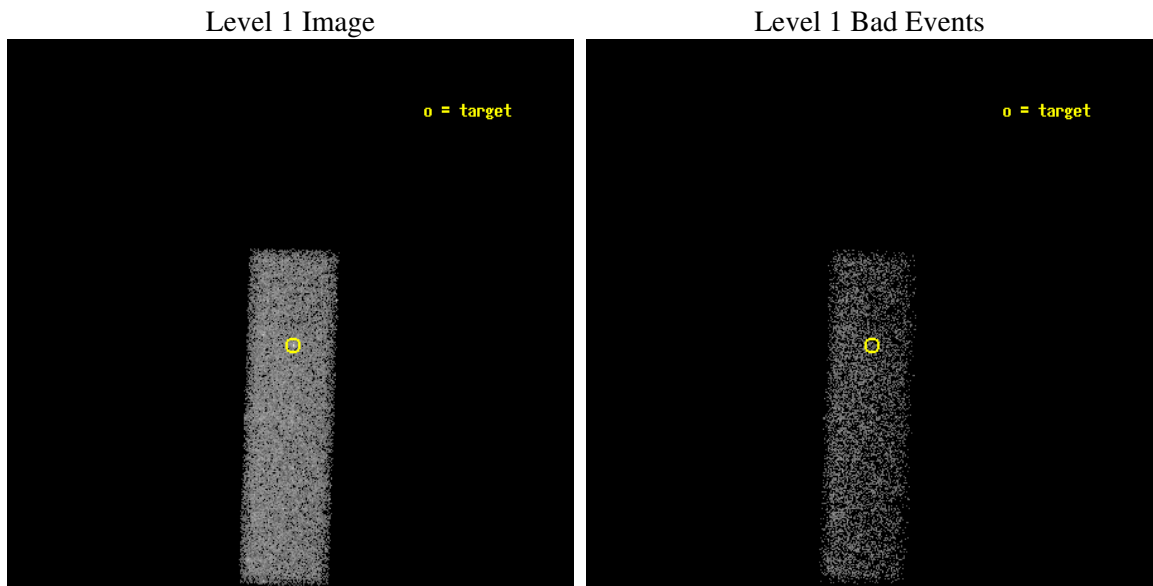
seq_num	700738
obs_id	4059
title	ELUSIVE ACTIVE GALACTIC NUCLEI IN STARBURST GALAXIES
observer	DR. ROBERTO MAIOLINO
object	NGC2623
dtcycle	0
cycle	P
ra_targ	129.600417
dec_targ	25.754722
ra_nom	129.6019225104
dec_nom	25.764291683391
roll_nom	91.852706843964
revision	2
ontime	20810.400310099
livetime	19794.920869494
ontime7	20810.400310099
l2events	19369



2 OBI

2.1 OBI

2.1.1 Images



2.1.2 Bias

Chip 7



2.1.3 Parameters

obi_num	1
ascdsver	7.6.9
caldbver	3.2.3
date	2006-10-18T17:13:00
revision	2

sched_exp_time	20000.000000
ontime	20830.675180674
ontime7	20830.675180674
l1events	46229

2.1.4 Events

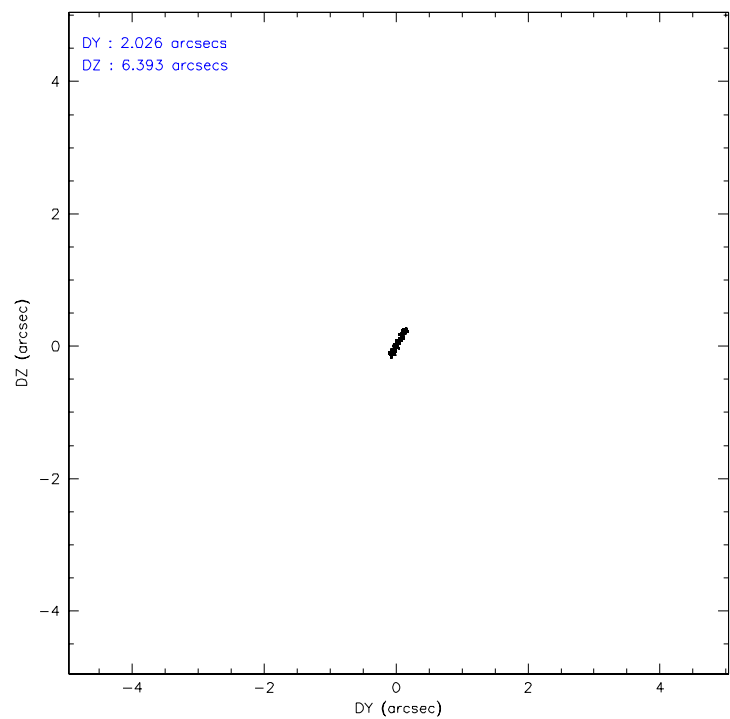
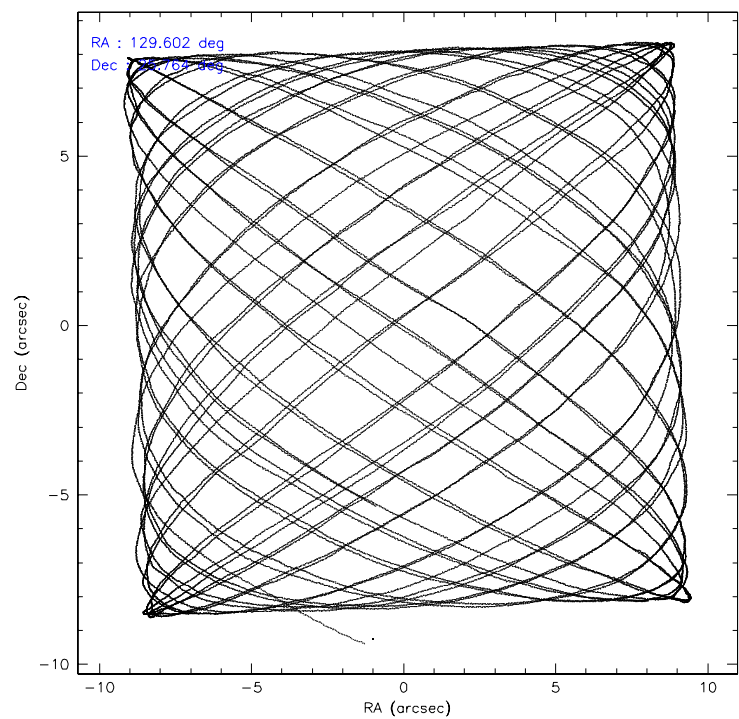
	ccd 7
level 1 events	46229
rejected events	26258
rejected %	56%

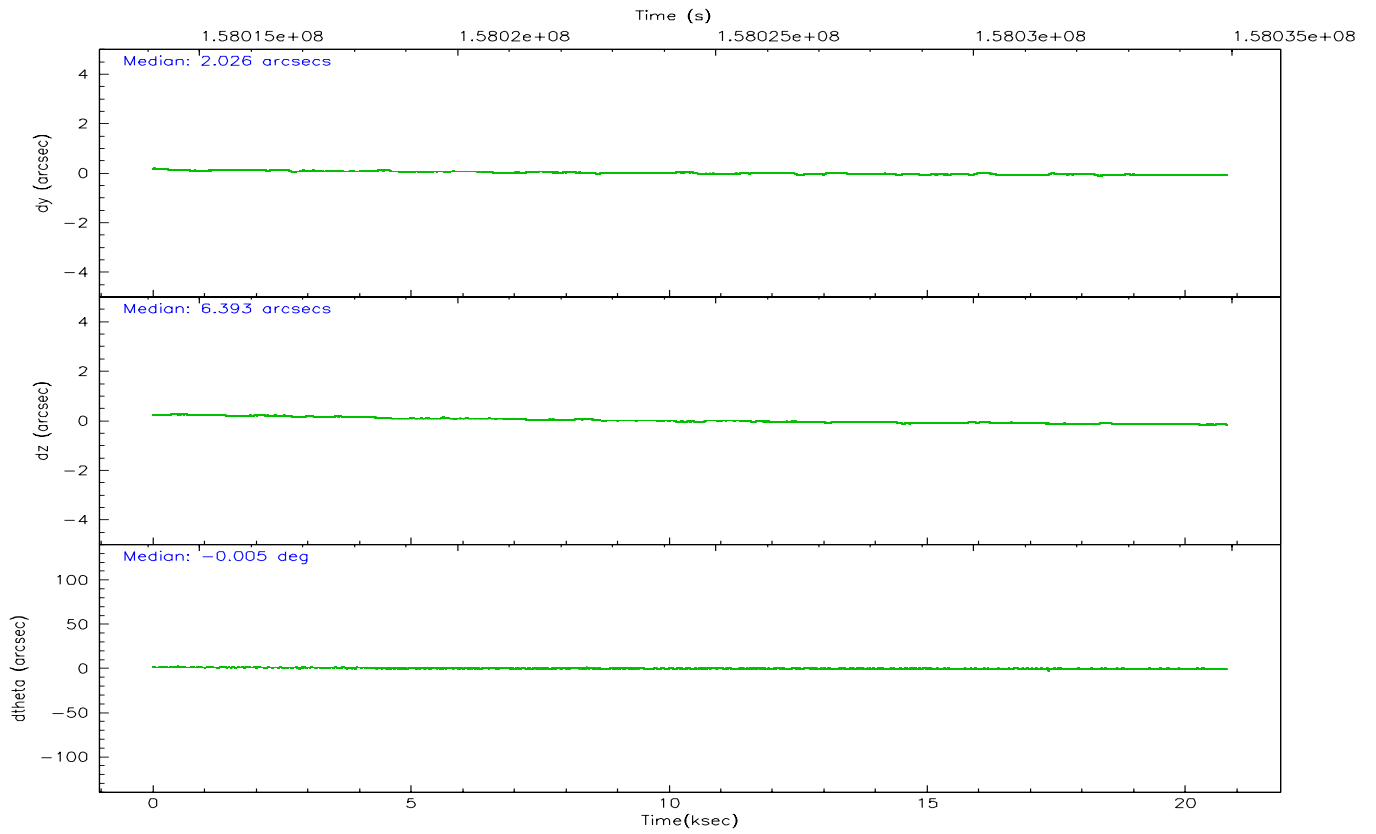
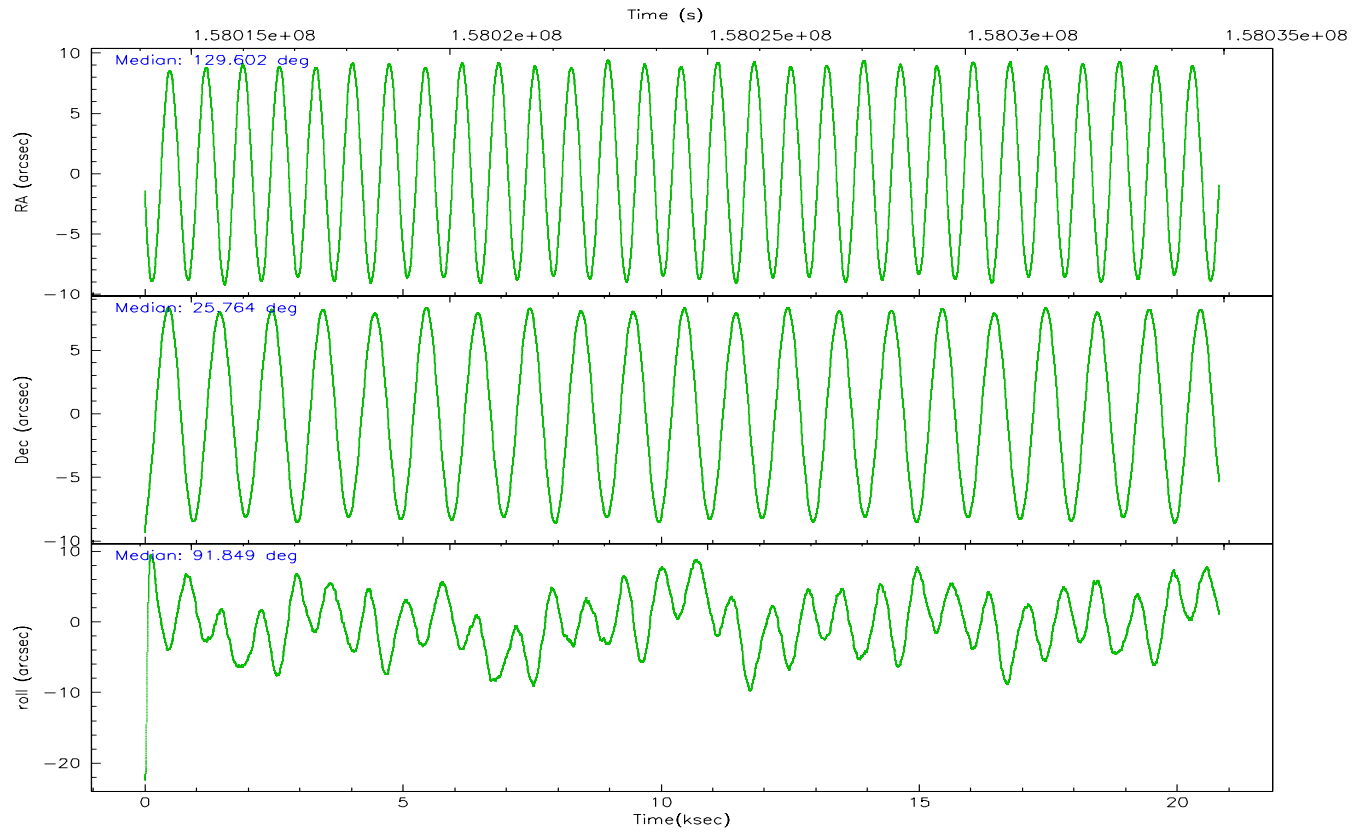
	ccd 7
grade 0 events	1482
	3%
grade 1 events	32
	0%
grade 2 events	4580
	9%
grade 3 events	1630
	3%
grade 4 events	1569
	3%
grade 5 events	3121
	6%
grade 6 events	10724
	23%
grade 7 events	23091
	49%

2.2 Compared Parameters

Parameter	Planned	Actual	Parameter	Planned	Actual
Instrument	ACIS	ACIS	Obspar format version number	6	6
Detector	ACIS-7	ACIS-7	Obspar file type	PREDICTED	ACTUAL
Grating	NONE	NONE	Obspar update status	NONE	UPDATED
Data mode	FAINT	FAINT	Number of optional ACIS chips dropped	0	0
Observation mode	POINTING	POINTING	On-chip summing requested	N	N
Pointing RA	129.618255	129.6019225103967	Subarray requested	1/4	1/4
Pointing Dec	25.741349	25.76429168339079	Subarray start row	0	385
Pointing Roll	91.688994	91.85270684396431	Subarray row count	1024	256
SIM focus pos (mm)	-0.684267	-0.6828225247311905	Alternating exposures requested	N	N
SIM defocus (mm)	0	0.001444936568705701	Primary exposure time	0.000000	0.8
SIM translation stage pos (mm)	-190.132523	-190.1425803651734			
SIM translation stage offset (mm)	0	0.01005778216563158			
Observation start time	158014908.184000	158013632.20262			
Observation start date	2003-01-03T21:00:44	2003-01-03T20:40:32			
Observation end time	158034908.184000	158035583.09103			
Observation end date	2003-01-04T02:34:04	2003-01-04T02:46:23			
Read mode	TIMED	TIMED			

2.3 Aspect



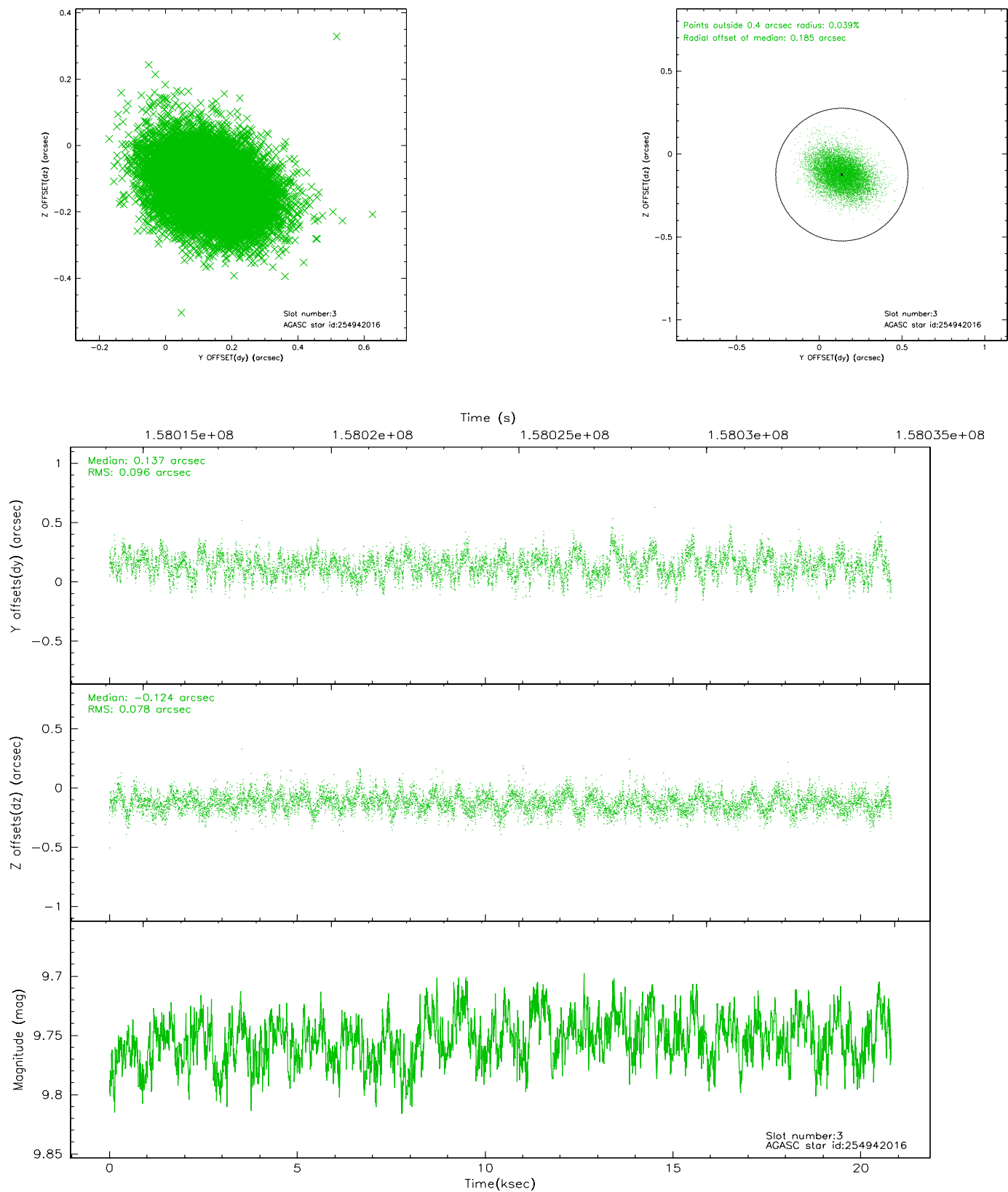


Slot Statistics

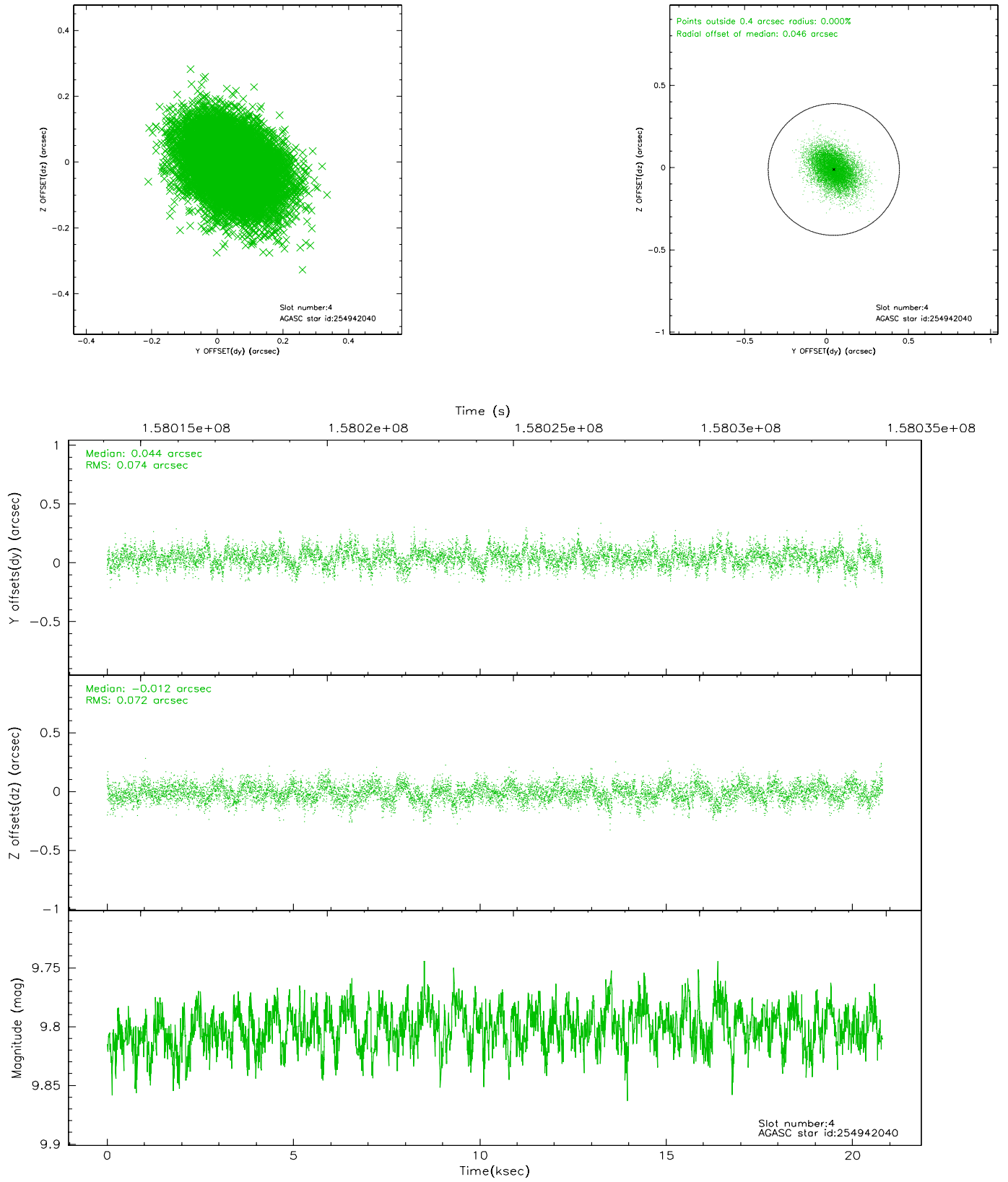
slot	status	id	mag	n_pts	med_dy	med_dz	dr1	dr2	ra	dec	mean_y	mean_z
0	FID	ACIS-S-2	7.11	5076	-0.047	0.011	0.009	0.028	0.000000	0.000000	-754.67	-1727.51
1	FID	ACIS-S-4	7.21	5076	-0.022	0.020	0.007	0.040	0.000000	0.000000	2158.52	180.85
2	FID	ACIS-S-5	7.24	5076	0.038	-0.022	0.007	0.018	0.000000	0.000000	-1807.23	174.61
3	GUIDE	254942016	9.75	10145	0.137	-0.124	0.131	0.214	129.080203	25.207438	-1865.90	1808.20
4	GUIDE	254942040	9.80	10144	0.044	-0.012	0.109	0.181	129.226731	25.579185	-544.24	1288.14
5	GUIDE	254943440	7.92	10148	-0.035	-0.045	0.073	0.117	129.178113	25.937283	749.42	1403.68
6	GUIDE	254944312	9.31	10147	-0.069	0.027	0.088	0.146	130.095041	26.079680	1175.15	-1576.65
7	GUIDE	254945152	9.48	10147	-0.079	0.159	0.098	0.159	130.091150	26.209782	1643.71	-1576.37

2.4 Star Slots

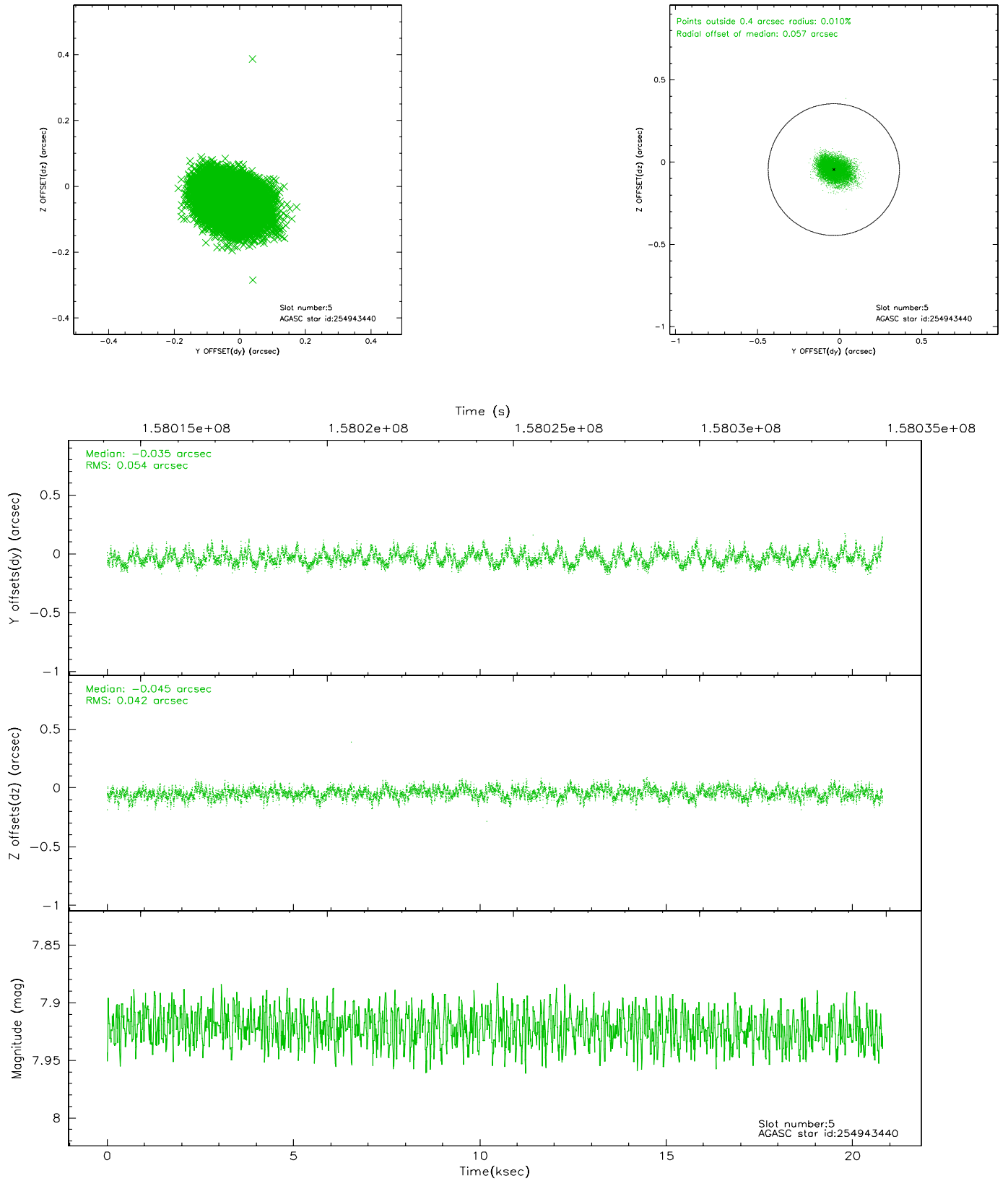
2.4.1 Slot 3



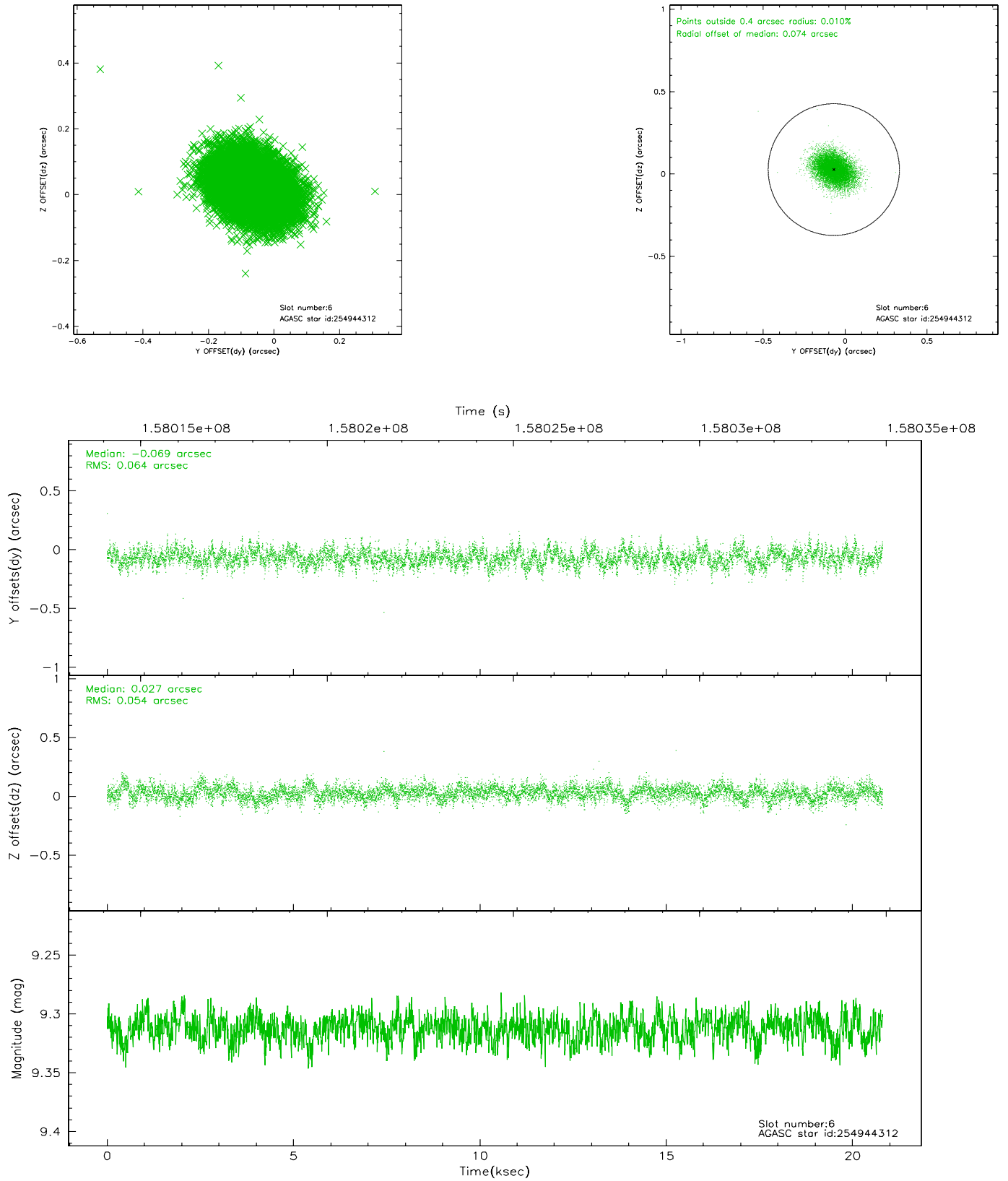
2.4.2 Slot 4



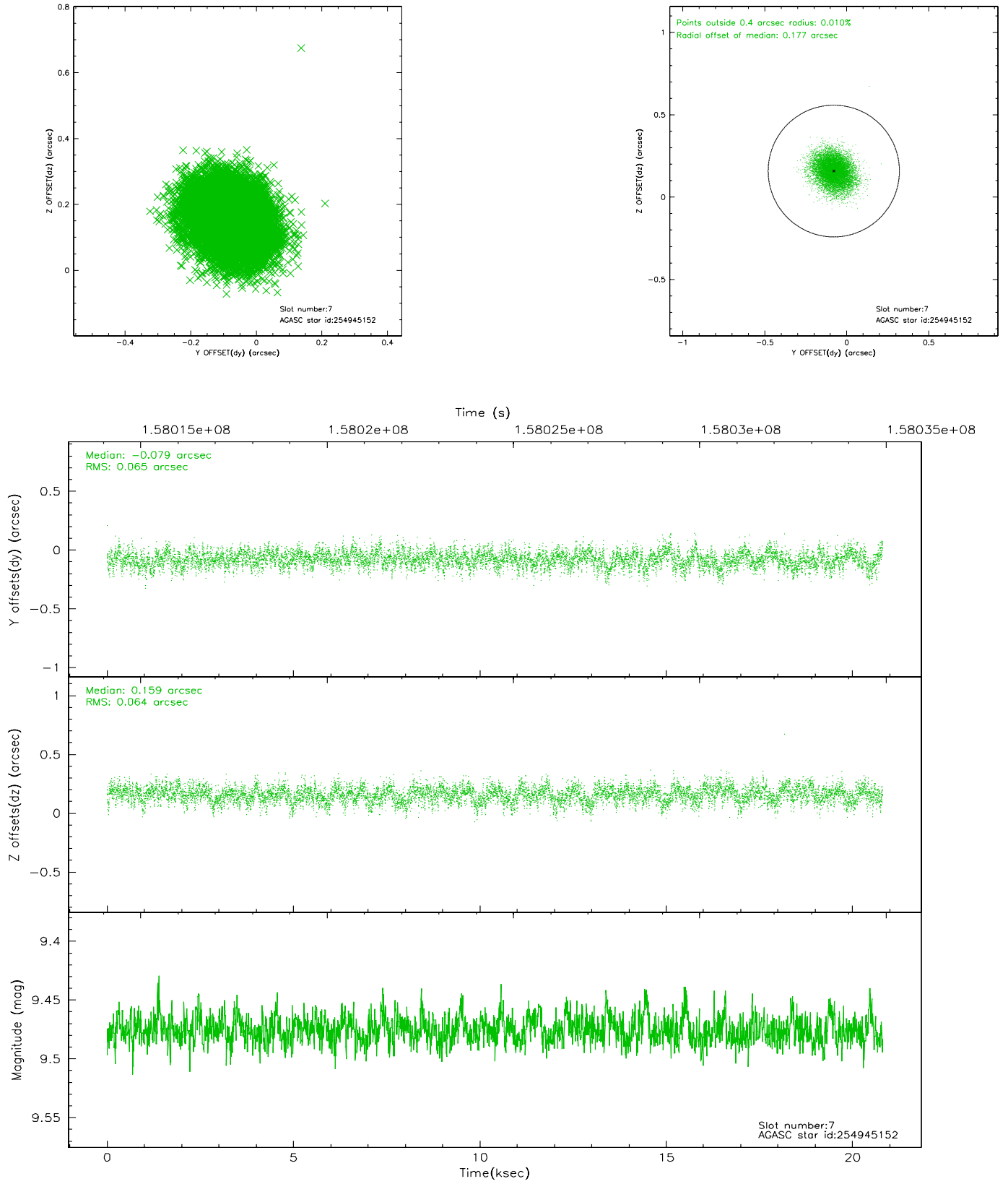
2.4.3 Slot 5



2.4.4 Slot 6

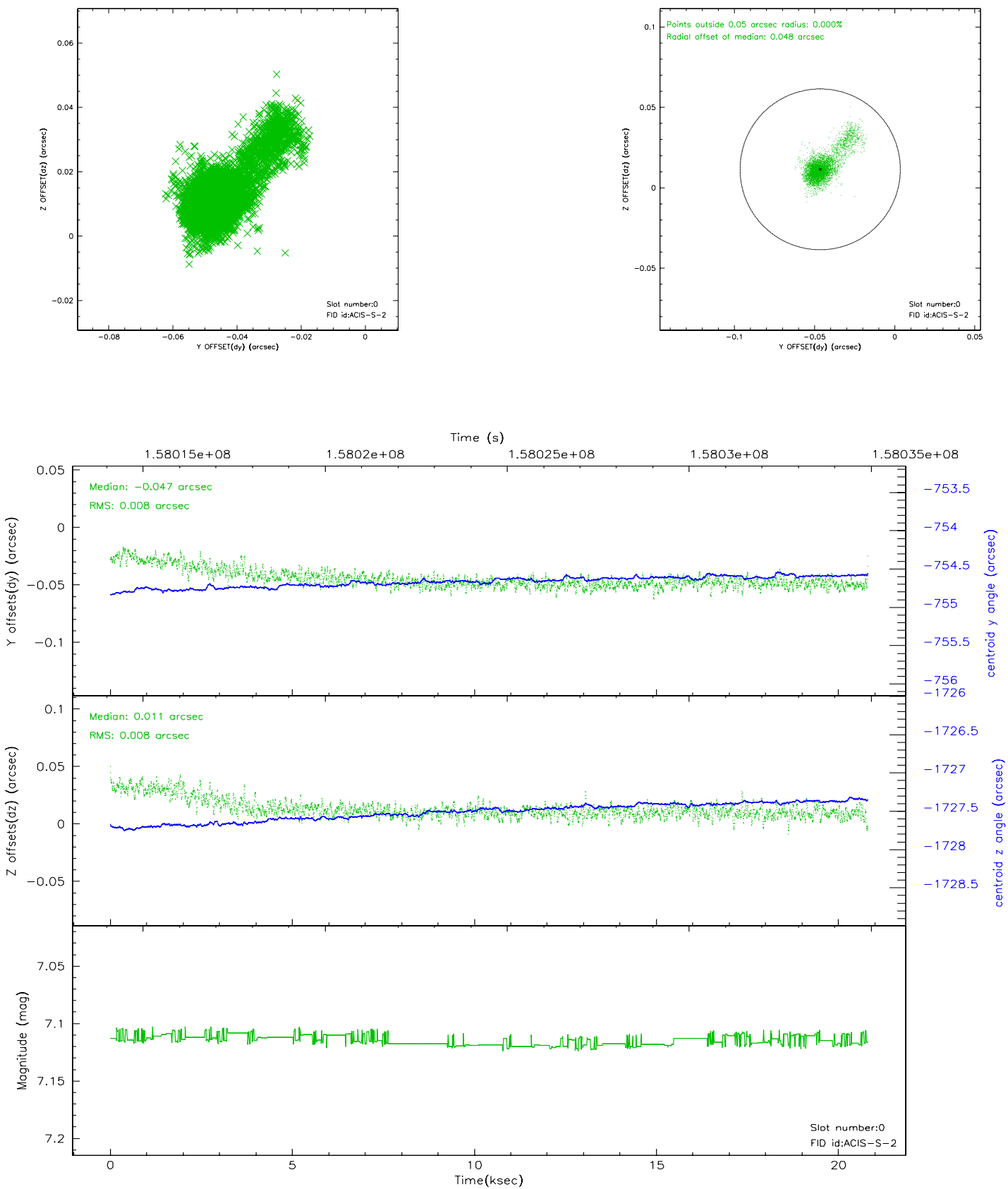


2.4.5 Slot 7

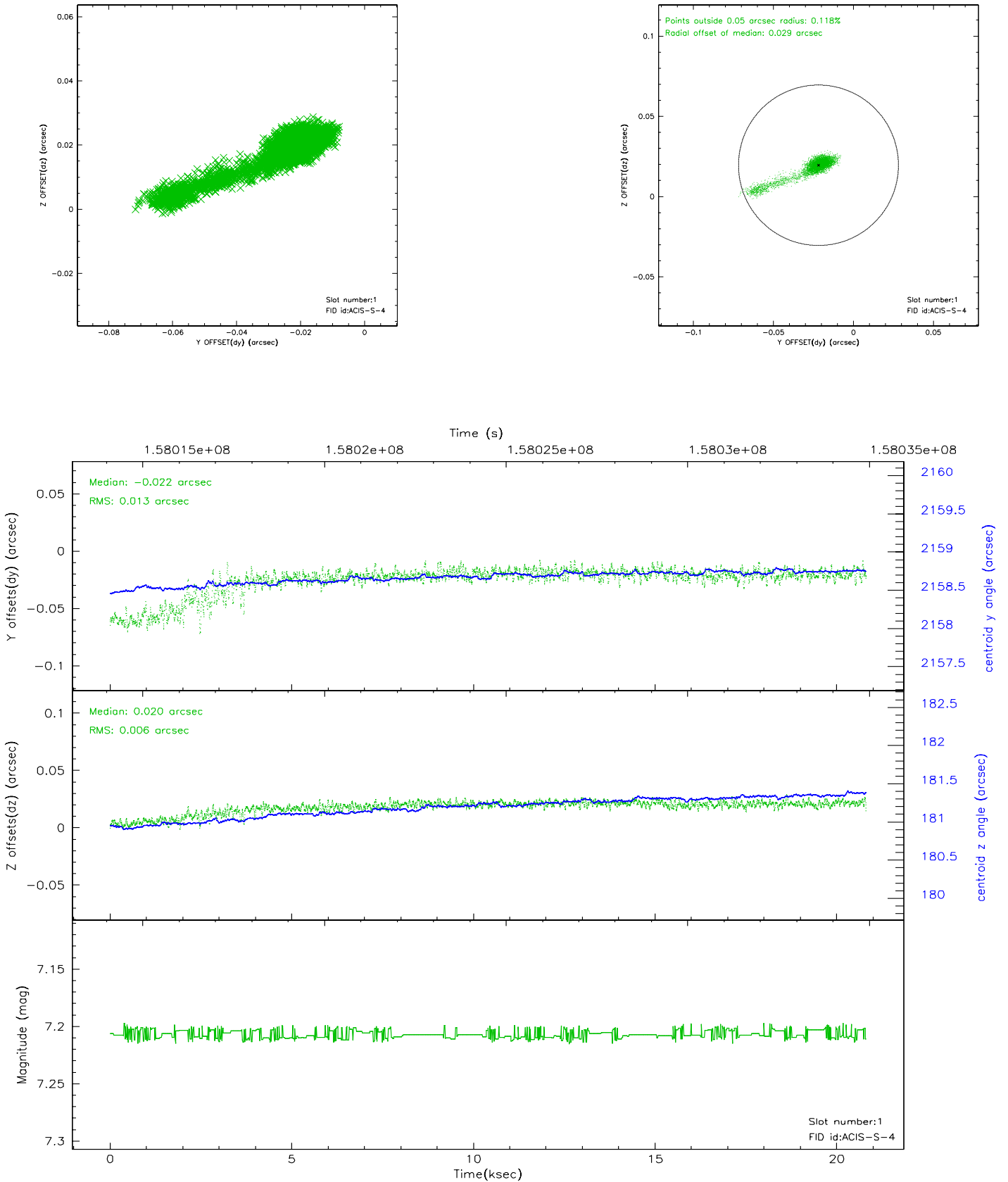


2.5 FID Slots

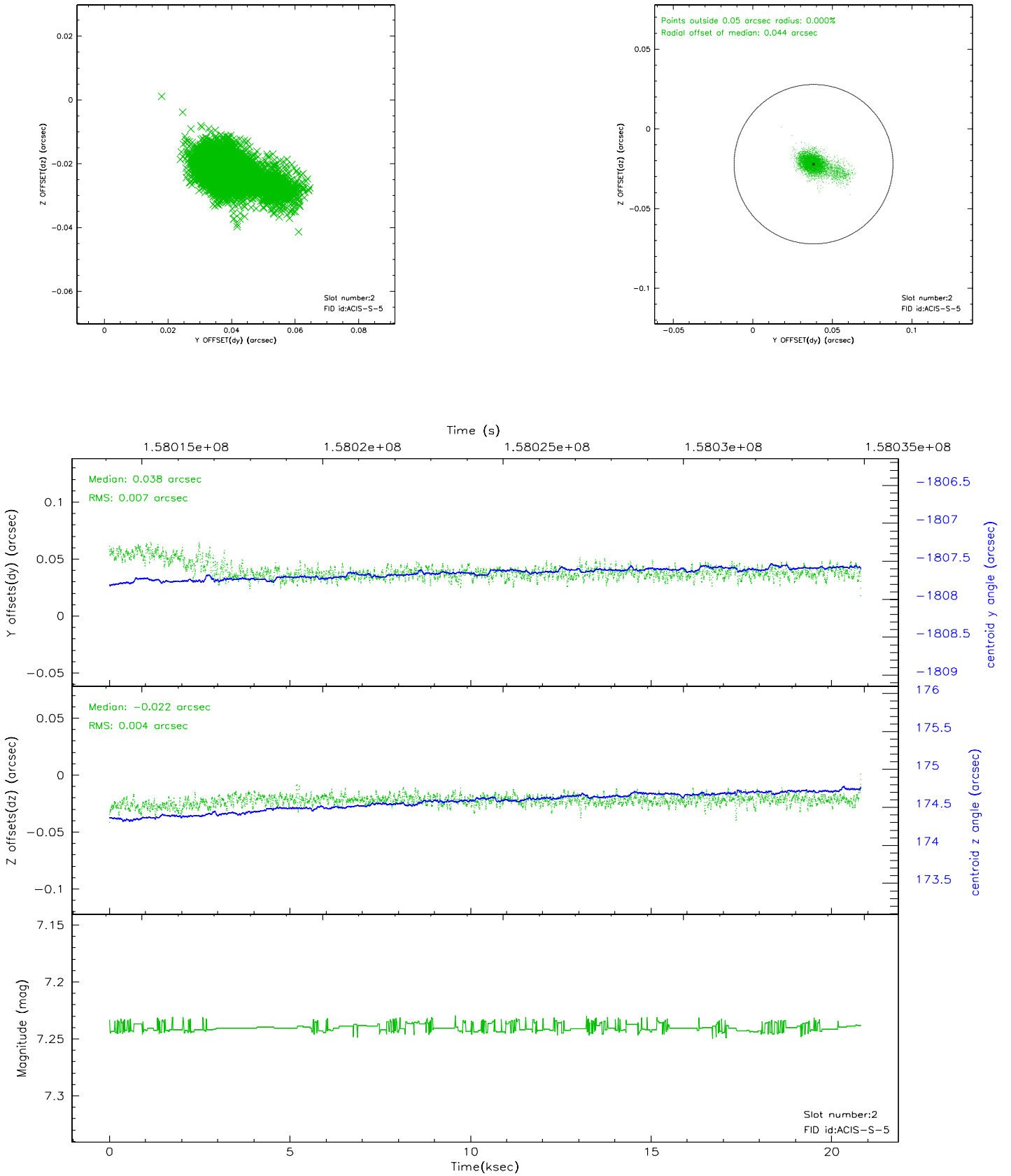
2.5.1 Slot 0



2.5.2 Slot 1



2.5.3 Slot 2



3 Point Sources

6.67 arcmin



A Summary

A.1 Status

V&V Scientist	Beth Sundheim
V&V Date (YYYY-MM-DD)	2006.10.18
V&V Edition	1
V&V Disposition and Status	OK
V&V Charge Time	20.81

A.2 Comments