

V&V Reference Report

L2 ASCDS Version : 7.6.8

Observation 4049 - L2 Version 001
Chandra X-Ray Center

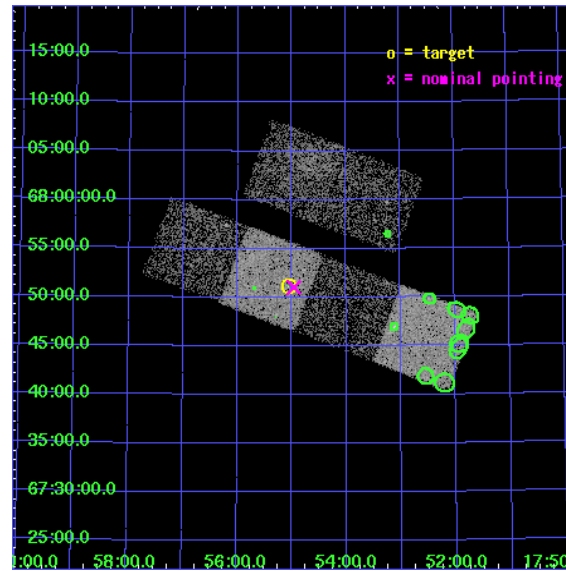
L2 Processing Date : Jul 14 2006

Contents

1	Front	2
2	OBI	3
2.1	OBI	3
2.1.1	Images	3
2.1.2	Bias	3
2.1.3	Parameters	4
2.1.4	Events	4
2.2	Compared Parameters	5
2.3	Aspect	6
2.4	Star Slots	9
2.4.1	Slot 3	9
2.4.2	Slot 4	10
2.4.3	Slot 5	11
2.4.4	Slot 6	12
2.4.5	Slot 7	13
2.5	FID Slots	14
2.5.1	Slot 0	14
2.5.2	Slot 1	15
2.5.3	Slot 2	16
3	Point Sources	17
A	Summary	18
A.1	Status	18
A.2	Comments	18

1 Front

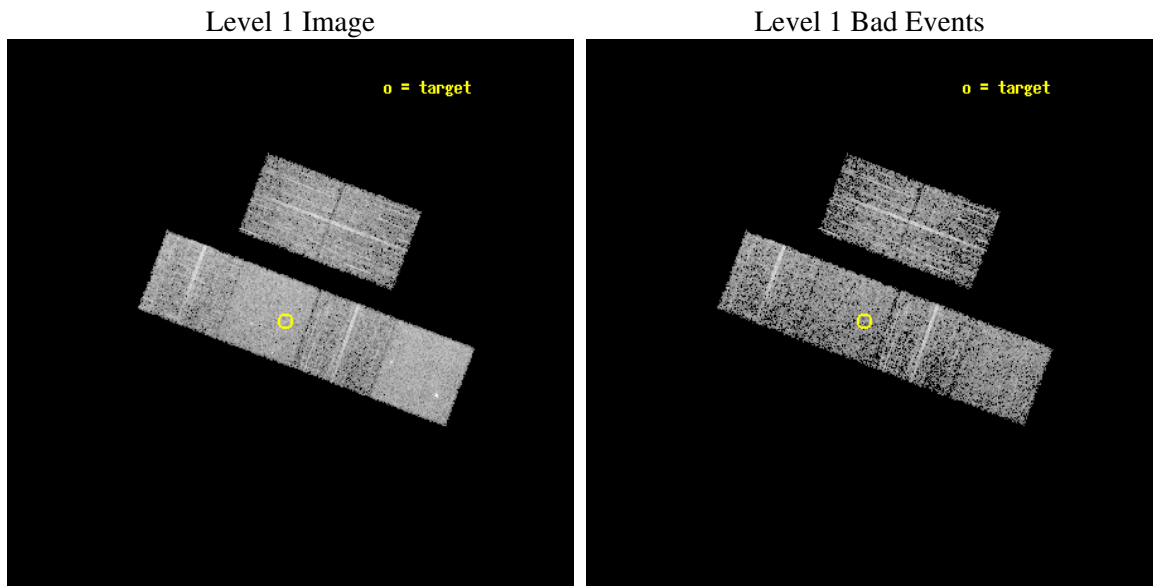
seq_num	700728
obs_id	4049
title	WHY DO WE SEE BROAD LINES IN X-RAY ABSORBED AGN?
observer	Dr. BELINDA WILKES
object	2MASS175504+675108
dtcycle	0
cycle	P
ra_targ	268.765833
dec_targ	67.852333
ra_nom	268.74059398532
dec_nom	67.850485095468
roll_nom	200.66389309802
revision	2
ontime	4051.1999849081
livetime	3999.9012513594
ontime2	4051.1999849081
ontime3	4051.1999849081
ontime5	4051.1999849081
ontime6	4051.1999849081
ontime7	4051.1999849081
ontime8	4051.1999849081
l2events	39238



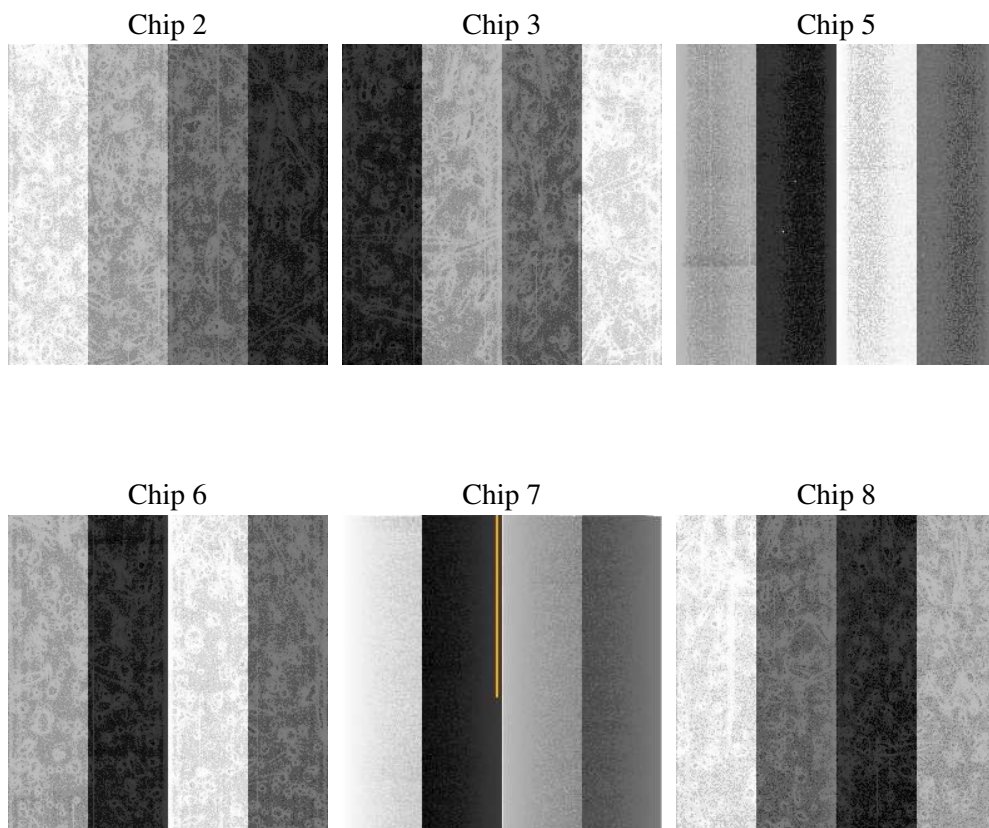
2 OBI

2.1 OBI

2.1.1 Images



2.1.2 Bias



2.1.3 Parameters

obi_num	0
ascdsver	7.6.8
caldsver	3.2.2
date	2006-07-14T05:58:10
revision	2

sched_exp_time	3956.000000
ontime	4057.7347128391
ontime2	4057.7347128391
ontime3	4057.7347128391
ontime5	4057.7347128391
ontime6	4057.7347128391
ontime7	4057.7347128391
ontime8	4057.7347128391
l1events	173549

2.1.4 Events

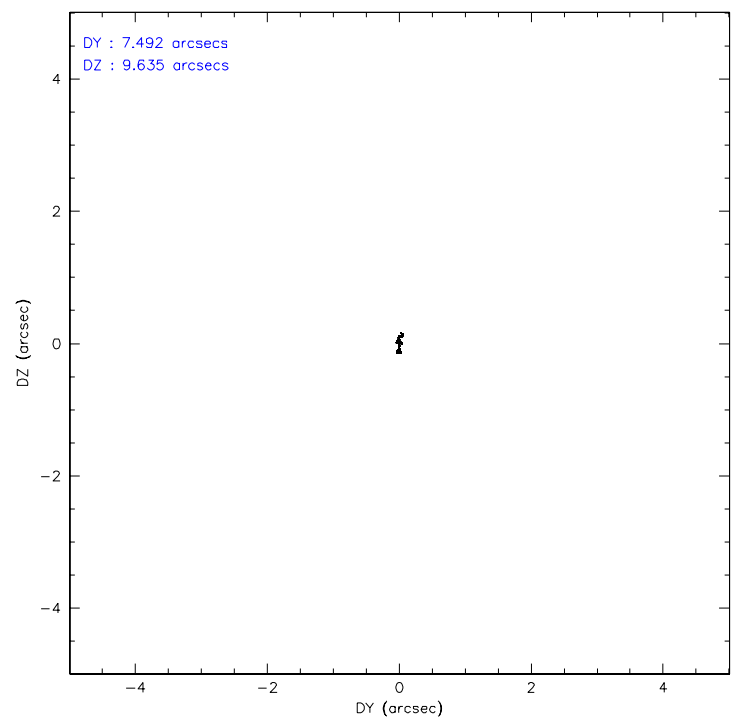
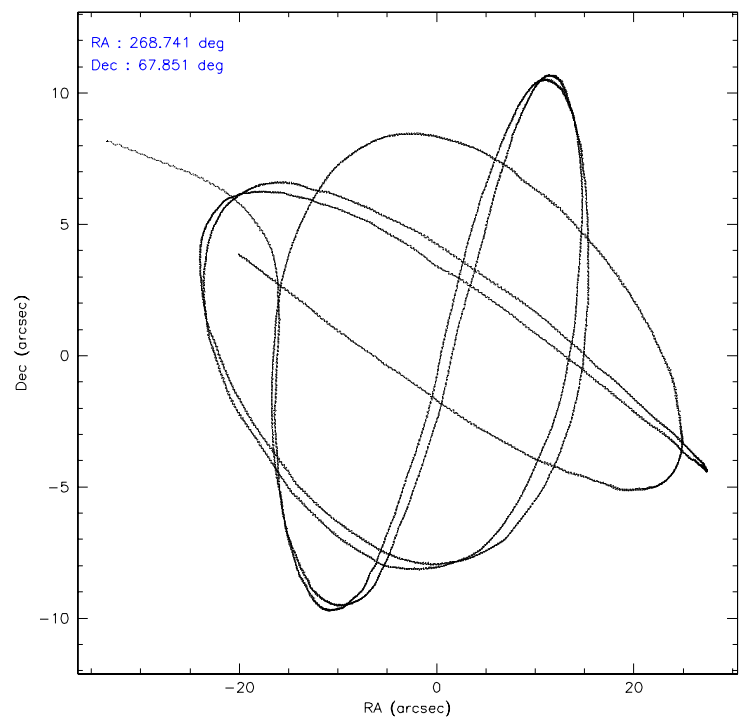
	ccd 2	ccd 3	ccd 5	ccd 6	ccd 7	ccd 8
level 1 events	24341	26014	35012	24712	33010	30460
rejected events	21227	21889	19845	21762	20176	24095
rejected %	87%	84%	56%	88%	61%	79%

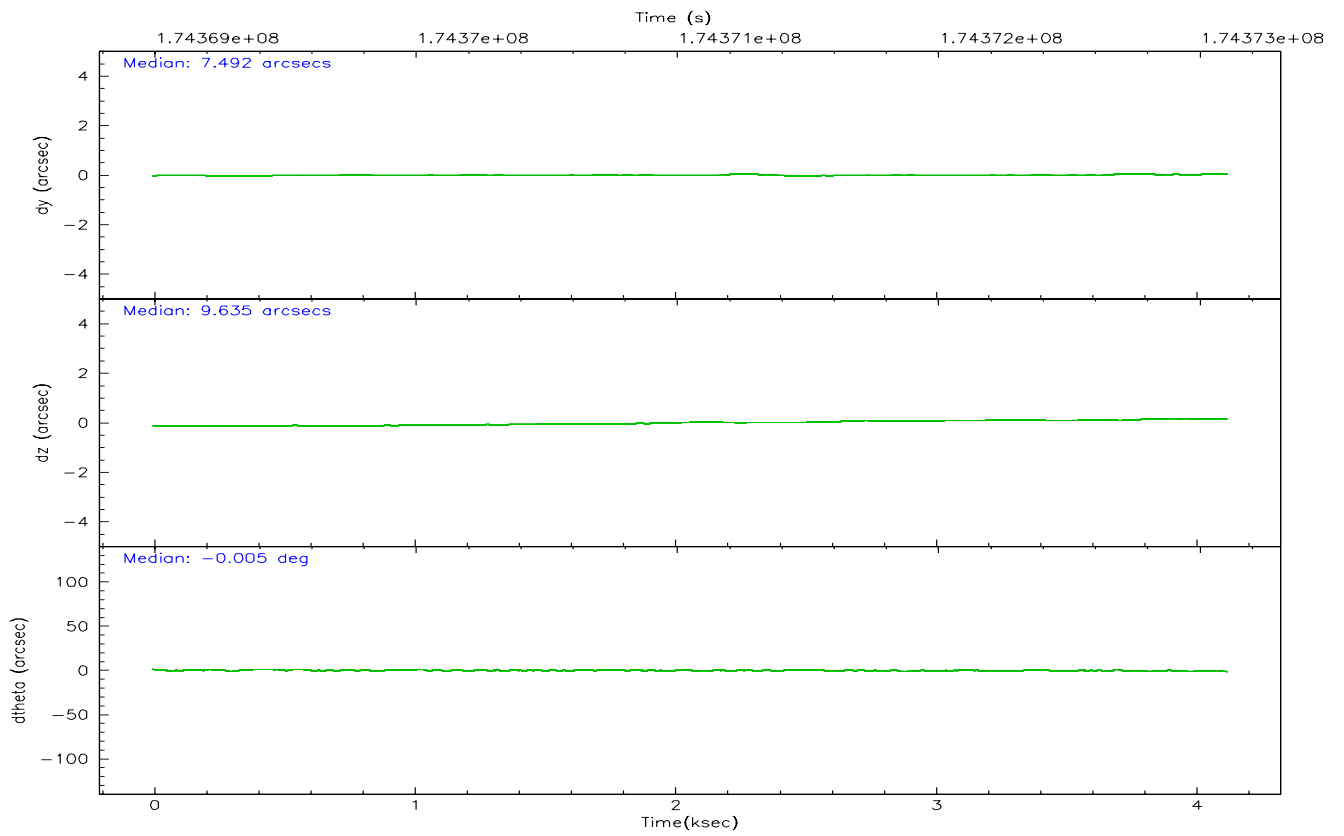
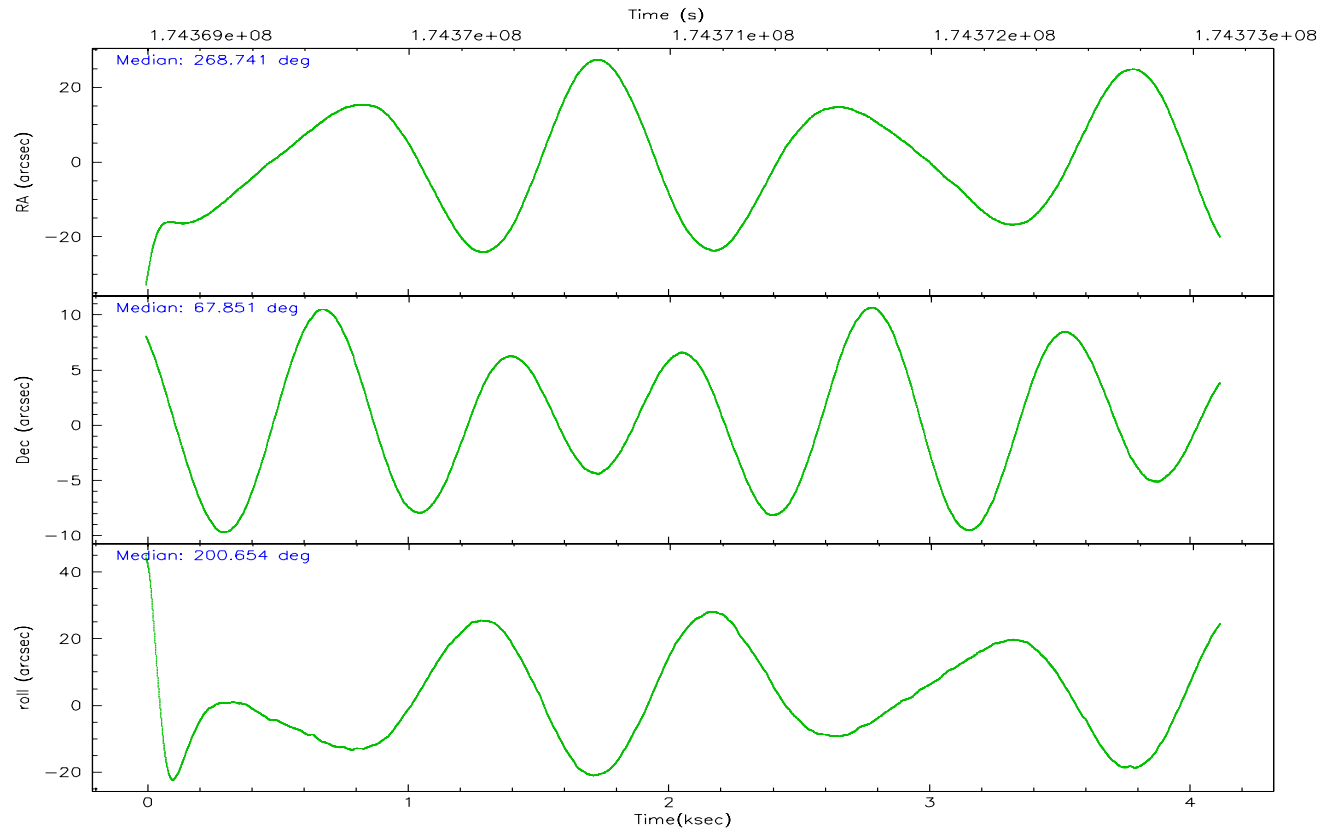
	ccd 2	ccd 3	ccd 5	ccd 6	ccd 7	ccd 8
grade 0 events	1558	2349	958	1171	920	2055
	6%	9%	2%	4%	2%	6%
grade 1 events	12	18	29	8	12	18
	0%	0%	0%	0%	0%	0%
grade 2 events	530	633	4532	615	3153	1353
	2%	2%	12%	2%	9%	4%
grade 3 events	292	347	333	294	727	629
	1%	1%	0%	1%	2%	2%
grade 4 events	265	295	322	285	657	651
	1%	1%	0%	1%	1%	2%
grade 5 events	889	1060	1602	1067	2092	1388
	3%	4%	4%	4%	6%	4%
grade 6 events	478	506	9042	587	7388	1690
	1%	1%	25%	2%	22%	5%
grade 7 events	20317	20806	18194	20685	18061	22676
	83%	79%	51%	83%	54%	74%

2.2 Compared Parameters

Parameter	Planned	Actual	Parameter	Planned	Actual
Instrument	ACIS	ACIS	Obspar format version number	6	6
Detector	ACIS-235678	ACIS-235678	Obspar file type	PREDICTED	ACTUAL
Grating	NONE	NONE	Obspar update status	NONE	UPDATED
Data mode	FAINT	FAINT	On-chip summing requested	N	N
Observation mode	POINTING	POINTING	Subarray requested	NONE	NONE
Pointing RA	268.785677	268.7405939853205	Alternating exposures requested	N	N
Pointing Dec	67.871844	67.85048509546785	Primary exposure time	0.000000	3.2
Pointing Roll	200.465329	200.6638930980218			
SIM focus pos (mm)	-0.684267	-0.6828225247311905			
SIM defocus (mm)	0	0.001444936568705701			
SIM translation stage pos (mm)	-190.132523	-190.1400660498719			
SIM translation stage offset (mm)	0	0.00754346686406393			
Observation start time	174369152.184000	174368122.89288			
Observation start date	2003-07-12T03:51:28	2003-07-12T03:35:22			
Observation end time	174373108.184000	174373424.70561			
Observation end date	2003-07-12T04:57:24	2003-07-12T05:03:44			
Read mode	TIMED	TIMED			

2.3 Aspect



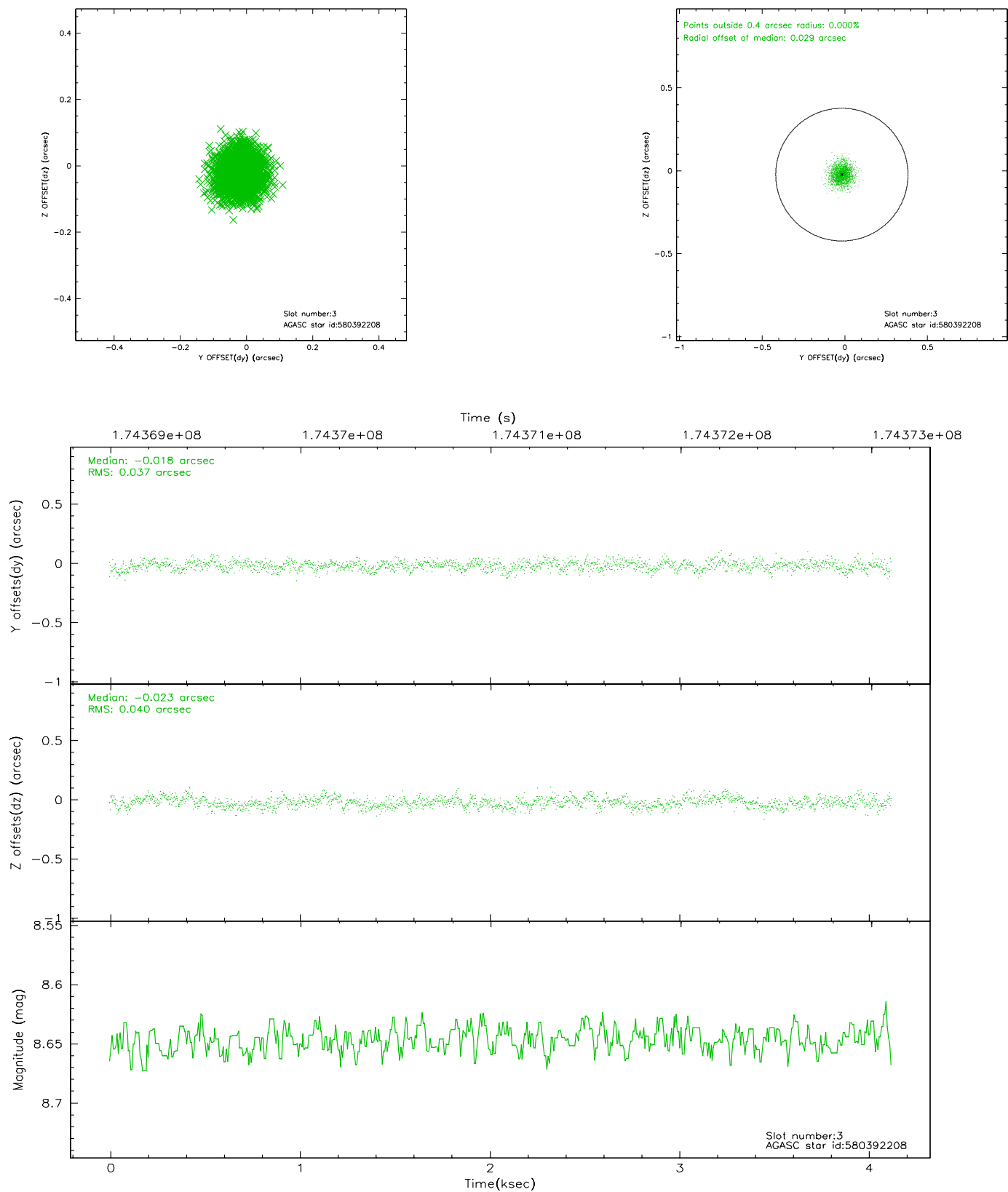


Slot Statistics

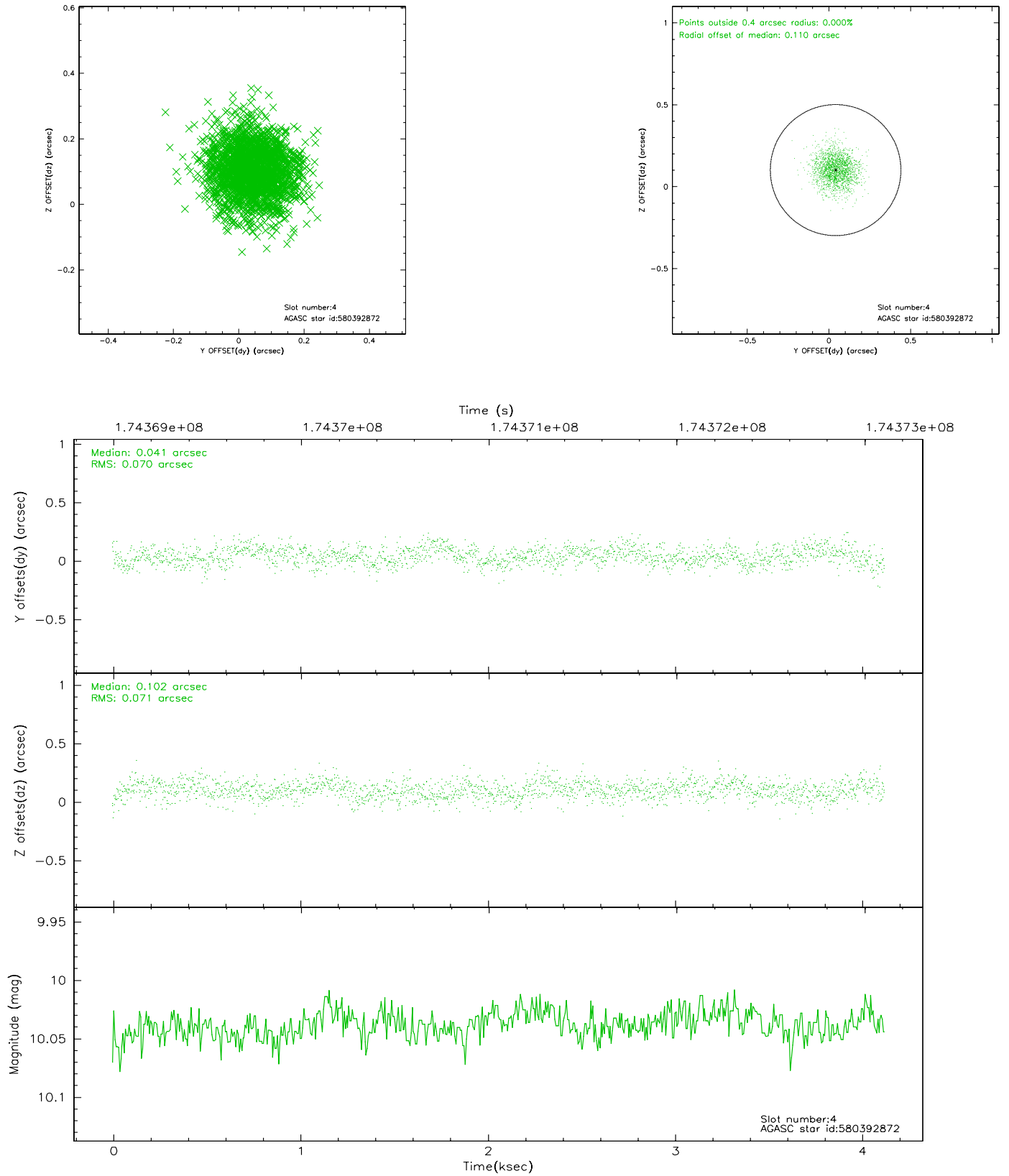
slot	status	id	mag	n_pts	med_dy	med_dz	dr1	dr2	ra	dec	mean_y	mean_z
0	FID	ACIS-S-2	7.10	1006	-0.025	-0.005	0.008	0.012	0.000000	0.000000	-760.25	-1730.89
1	FID	ACIS-S-4	7.20	1006	0.037	0.014	0.006	0.010	0.000000	0.000000	2152.37	176.10
2	FID	ACIS-S-5	7.23	1006	-0.042	0.000	0.007	0.011	0.000000	0.000000	-1811.20	171.41
3	GUIDE	580392208	8.65	2010	-0.018	-0.023	0.058	0.095	269.218850	67.601026	-216.54	1119.18
4	GUIDE	580392872	10.04	2008	0.041	0.102	0.106	0.171	269.607901	68.379285	-1662.69	-1336.59
5	GUIDE	580395936	8.95	2012	-0.003	-0.053	0.074	0.120	269.727854	67.793590	-1106.60	702.11
6	GUIDE	580396416	9.38	2003	-0.012	-0.100	0.097	0.153	268.610456	67.747248	380.01	336.68
7	GUIDE	580397224	8.09	2011	-0.019	0.072	0.082	0.125	267.258534	68.341831	1301.28	-2317.60

2.4 Star Slots

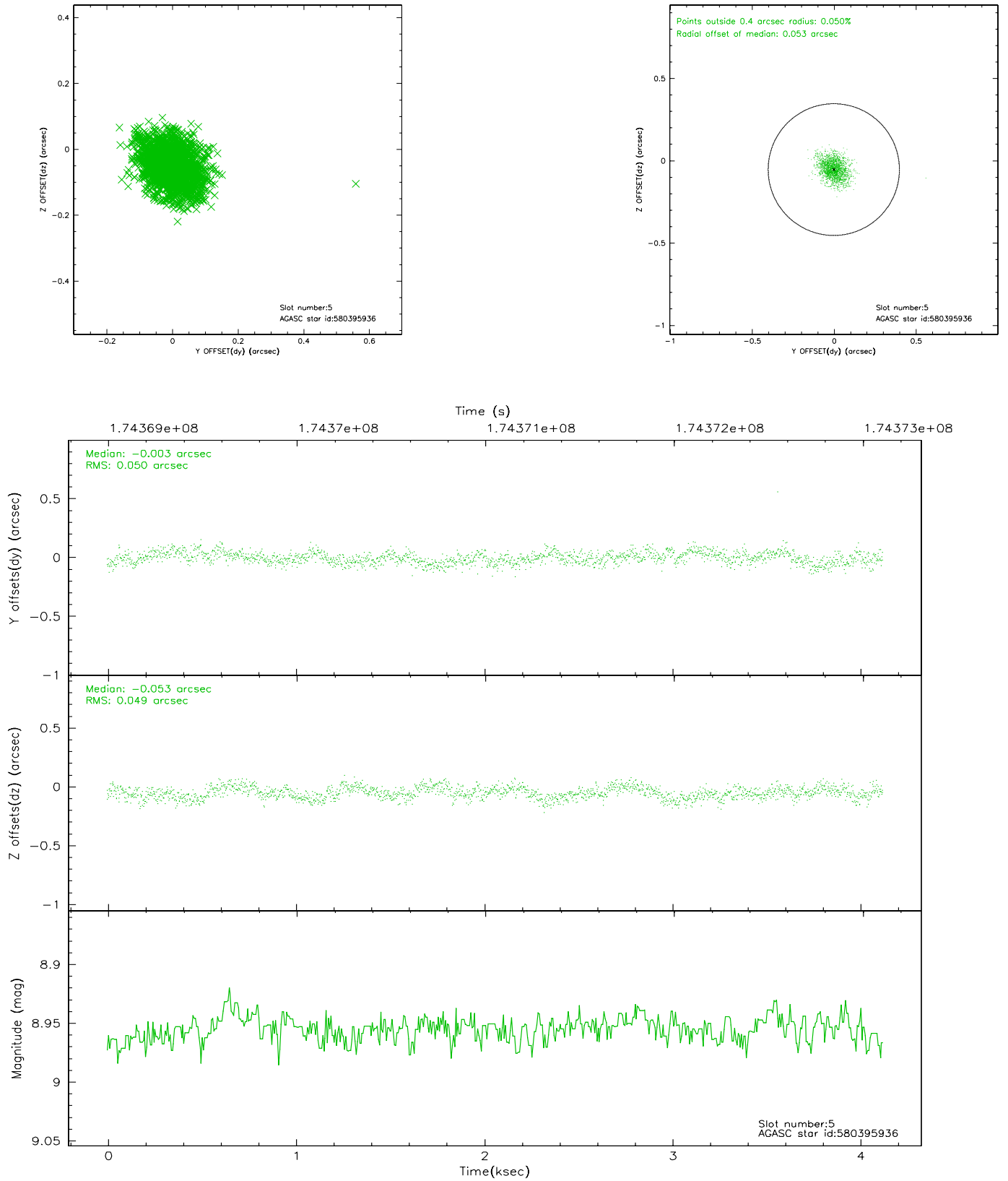
2.4.1 Slot 3



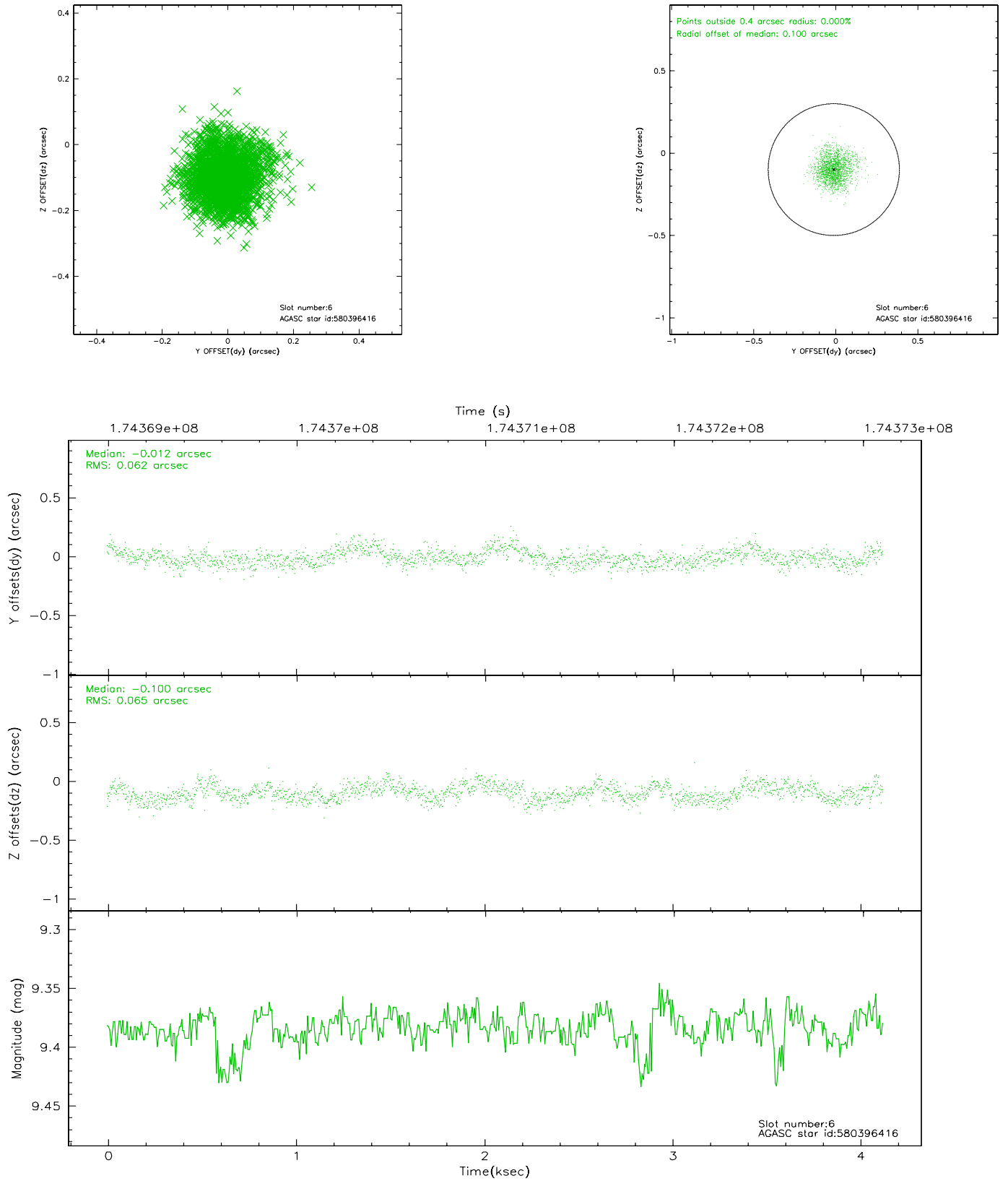
2.4.2 Slot 4



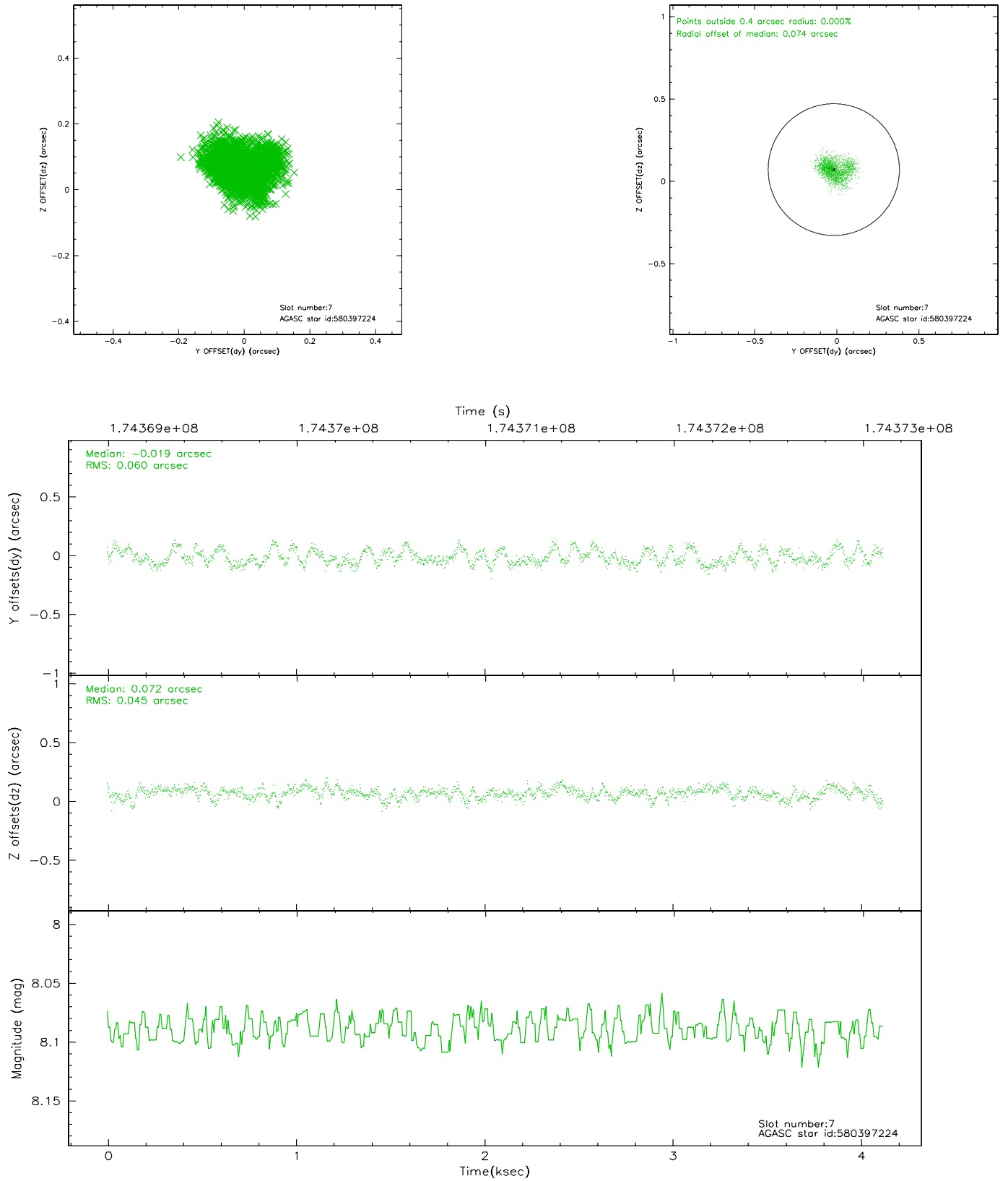
2.4.3 Slot 5



2.4.4 Slot 6

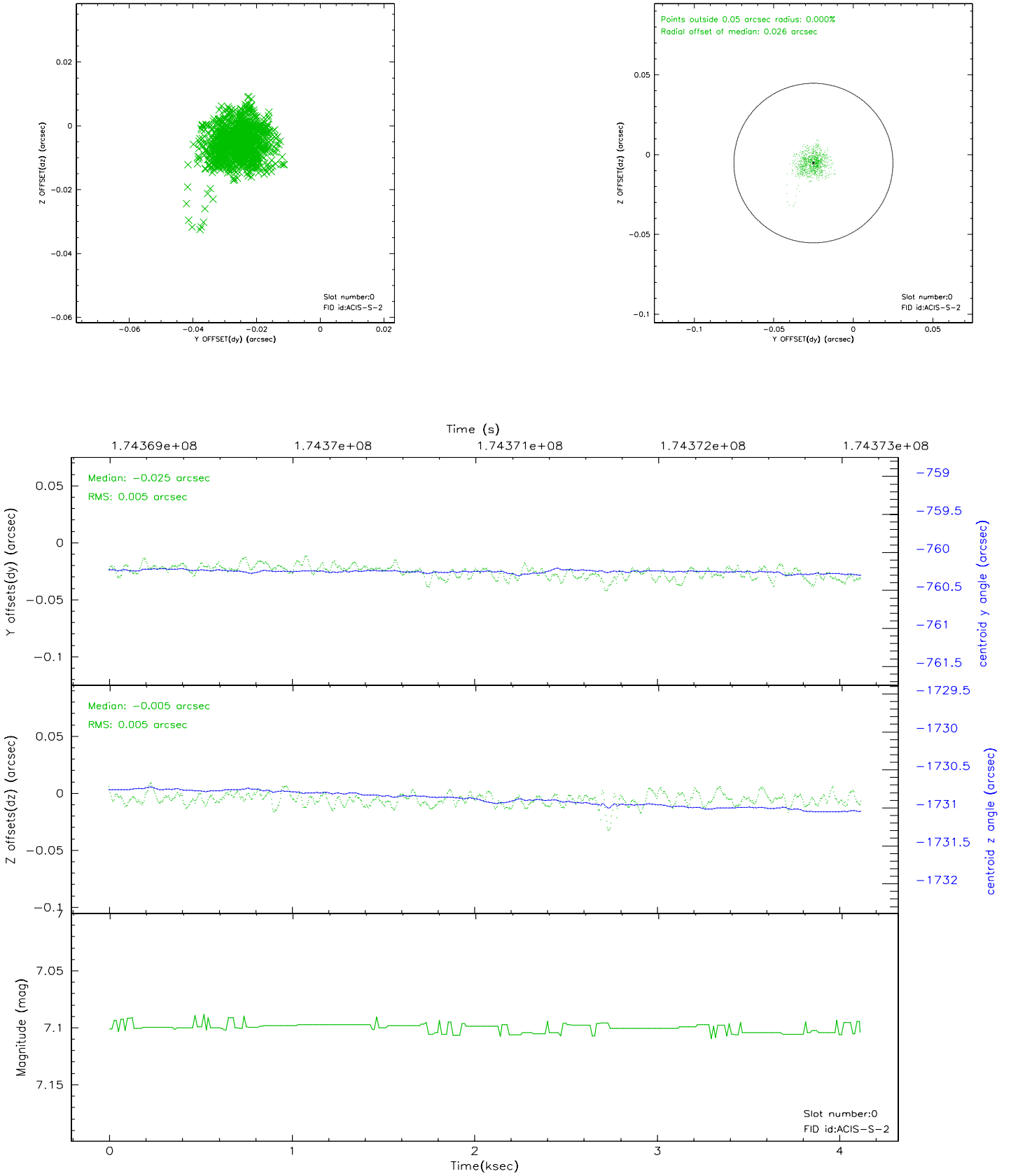


2.4.5 Slot 7

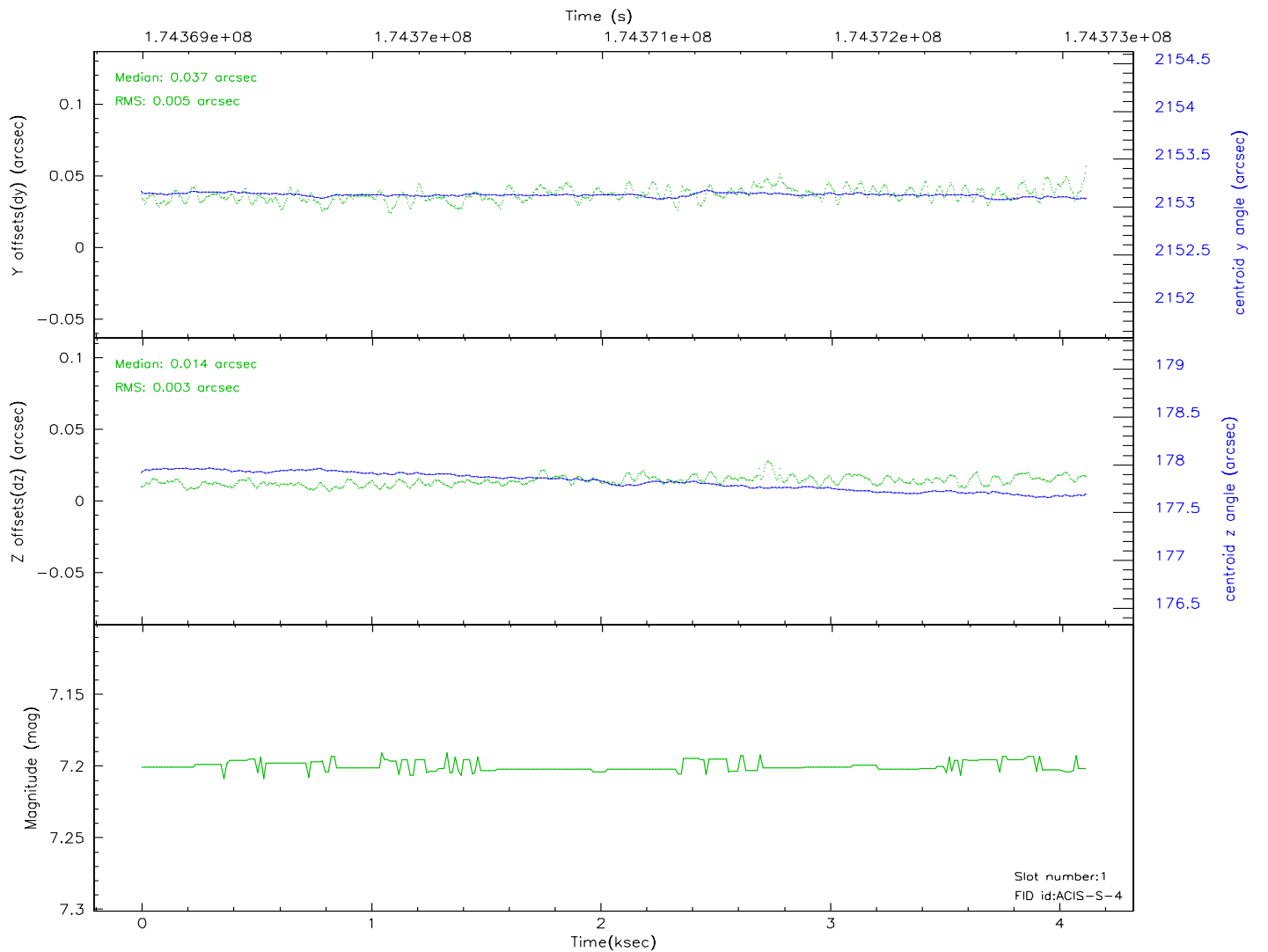
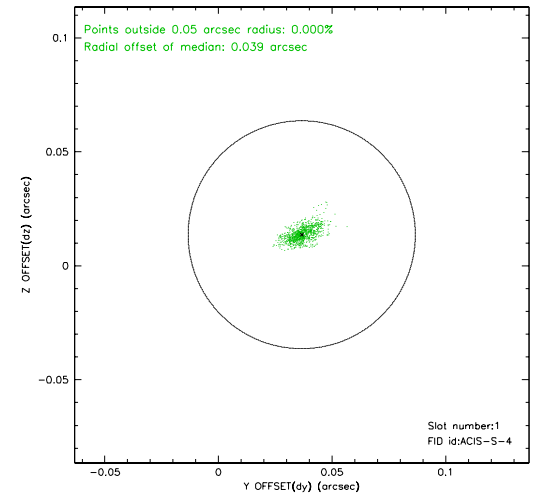
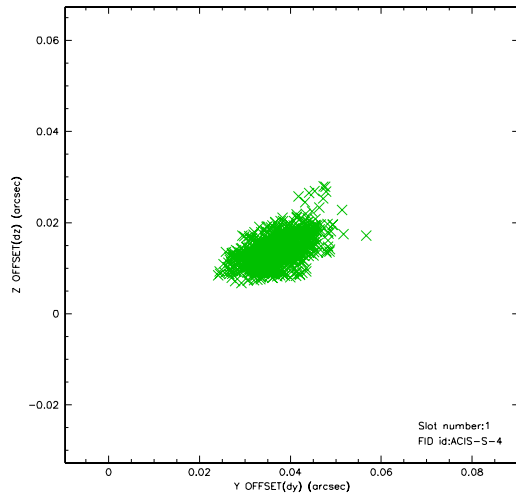


2.5 FID Slots

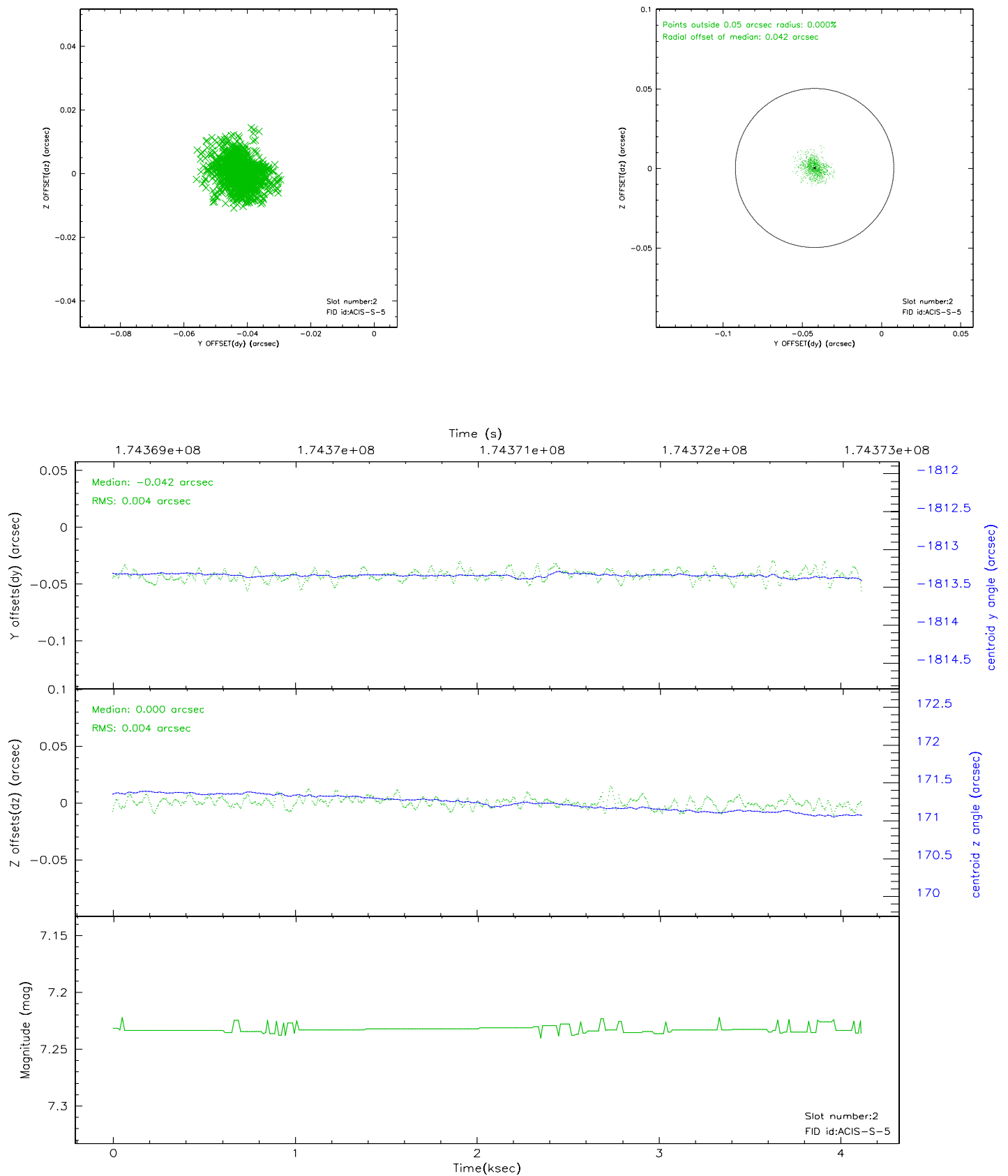
2.5.1 Slot 0



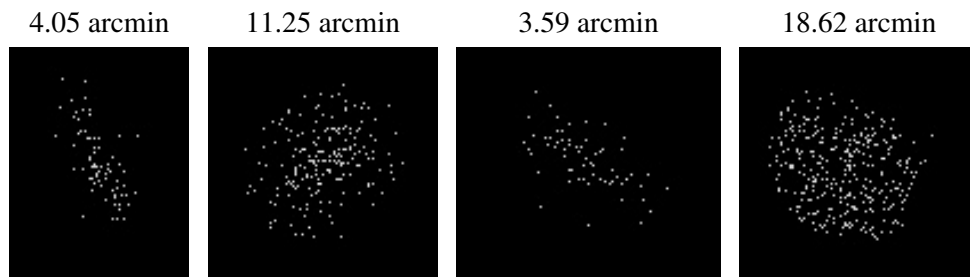
2.5.2 Slot 1



2.5.3 Slot 2



3 Point Sources



A Summary

A.1 Status

V&V Scientist	Beth Sundheim
V&V Date (YYYY-MM-DD)	2006.07.14
V&V Edition	1
V&V Disposition and Status	OK
V&V Charge Time	4.054

A.2 Comments

Focal plane temperature is warmer than -118 degrees throughout observation. The ACIS calibrations are not verified or necessarily applicable for focal plane temperatures warmer than -118 degrees.