

V&V Reference Report

L2 ASCDS Version : 7.6.8

Observation 4046 - L2 Version 001
Chandra X-Ray Center

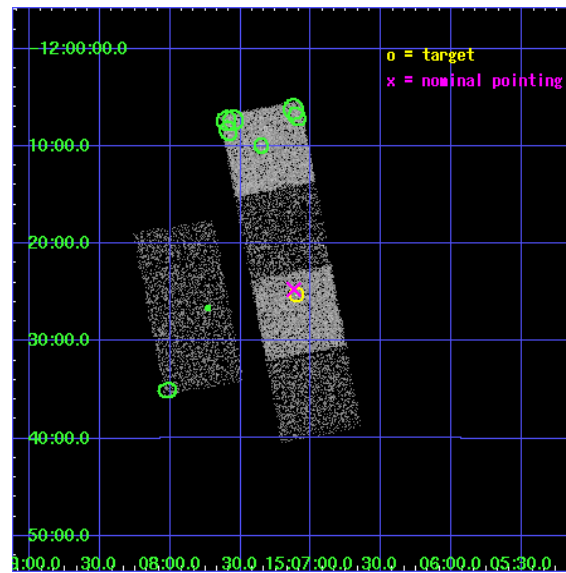
L2 Processing Date : Jul 25 2006

Contents

1	Front	2
2	OBI	3
2.1	OBI	3
2.1.1	Images	3
2.1.2	Bias	3
2.1.3	Parameters	4
2.1.4	Events	4
2.2	Compared Parameters	5
2.3	Aspect	6
2.4	Star Slots	9
2.4.1	Slot 3	9
2.4.2	Slot 4	10
2.4.3	Slot 5	11
2.4.4	Slot 6	12
2.4.5	Slot 7	13
2.5	FID Slots	14
2.5.1	Slot 0	14
2.5.2	Slot 1	15
2.5.3	Slot 2	16
3	Point Sources	17
A	Summary	18
A.1	Status	18
A.2	Comments	18

1 Front

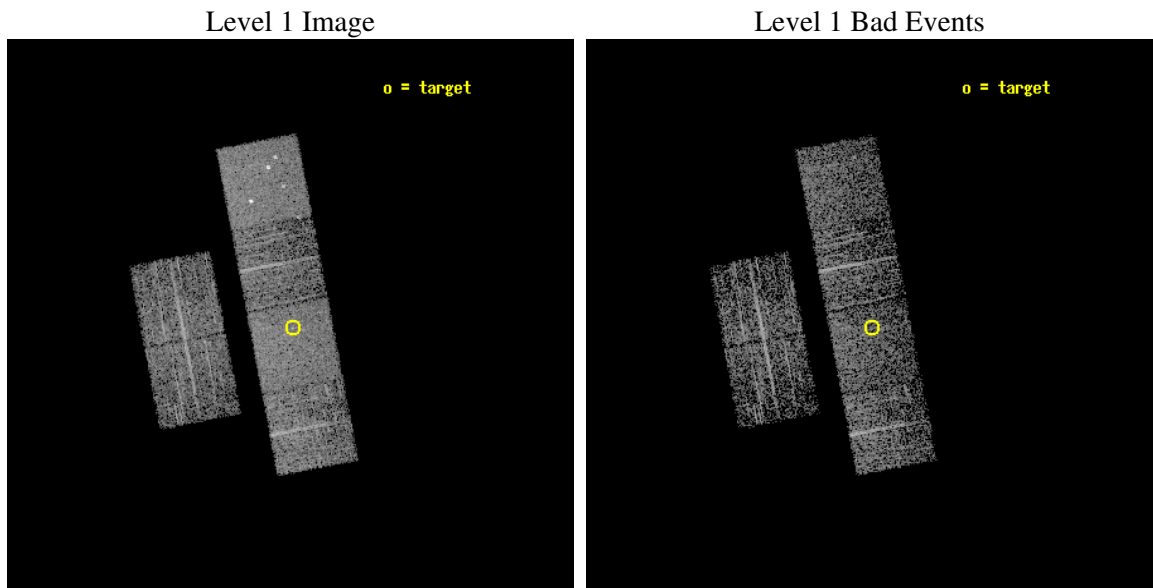
seq_num	700725
obs_id	4046
title	WHY DO WE SEE BROAD LINES IN X-RAY ABSORBED AGN?
observer	Dr. BELINDA WILKES
object	2MASS150706-122516
dtcycle	0
cycle	P
ra_targ	226.776667
dec_targ	-12.421083
ra_nom	226.78011873032
dec_nom	-12.412136450662
roll_nom	79.142050328682
revision	2
ontime	2771.1999896765
livetime	2736.1093867909
ontime2	2771.1999896765
ontime3	2771.1999896765
ontime5	2771.1999896765
ontime6	2771.1999896765
ontime7	2771.1999896765
ontime8	2771.1999896765
l2events	27343



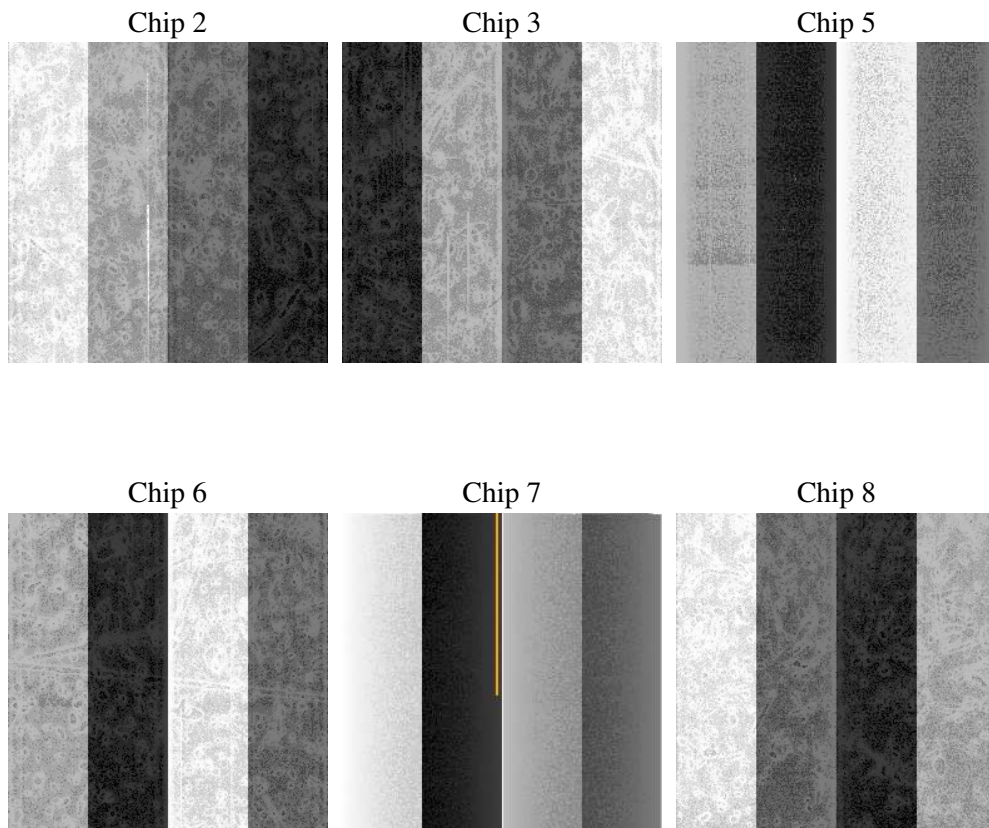
2 OBI

2.1 OBI

2.1.1 Images



2.1.2 Bias



2.1.3 Parameters

obi_num	0
ascdsver	7.6.8
caldsver	3.2.2
date	2006-07-25T17:34:32
revision	2

sched_exp_time	2700.000000
ontime	2774.2967070341
ontime2	2774.2967070341
ontime3	2774.2967070341
ontime5	2774.2967070341
ontime6	2774.2967070341
ontime7	2774.2967070341
ontime8	2774.2967070341
l1events	126259

2.1.4 Events

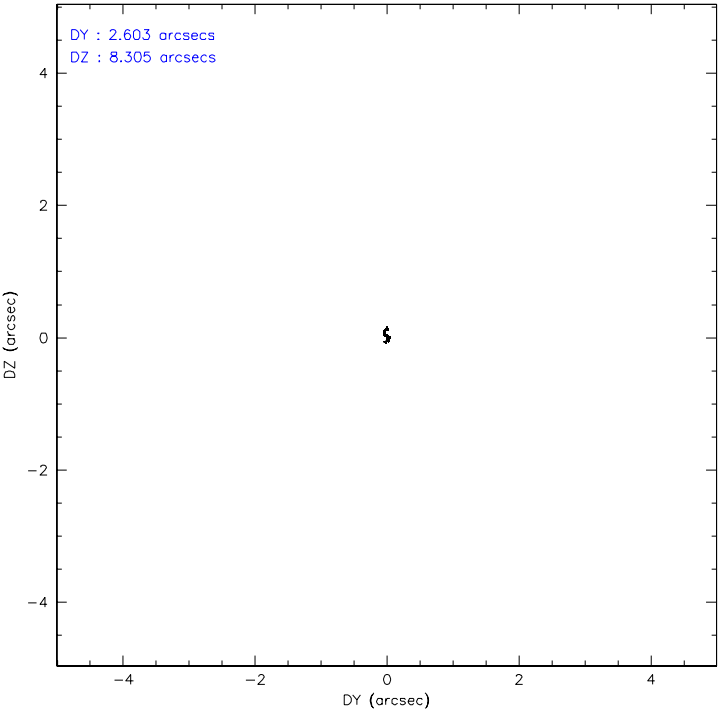
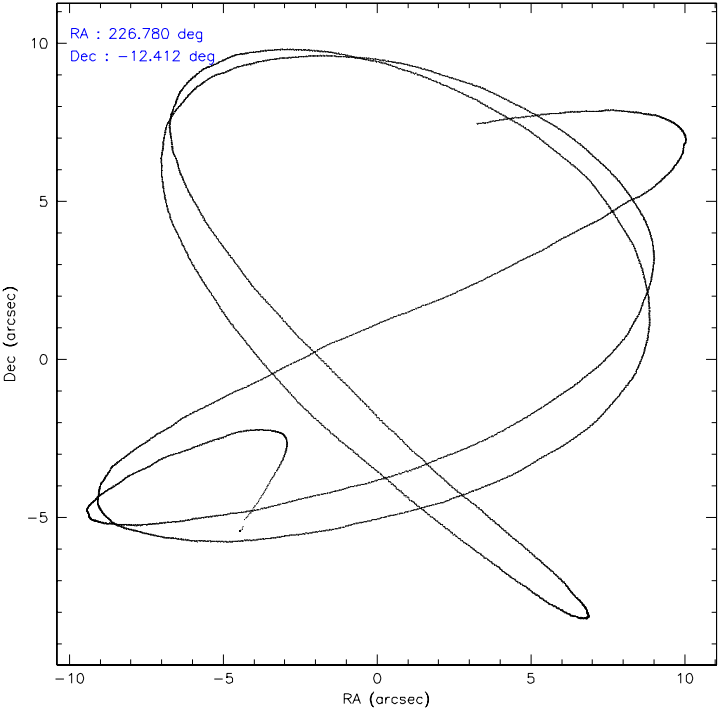
	ccd 2	ccd 3	ccd 5	ccd 6	ccd 7	ccd 8
level 1 events	18151	16633	27317	18064	24086	22008
rejected events	16027	14522	14450	15862	14938	17335
rejected %	88%	87%	52%	87%	62%	78%

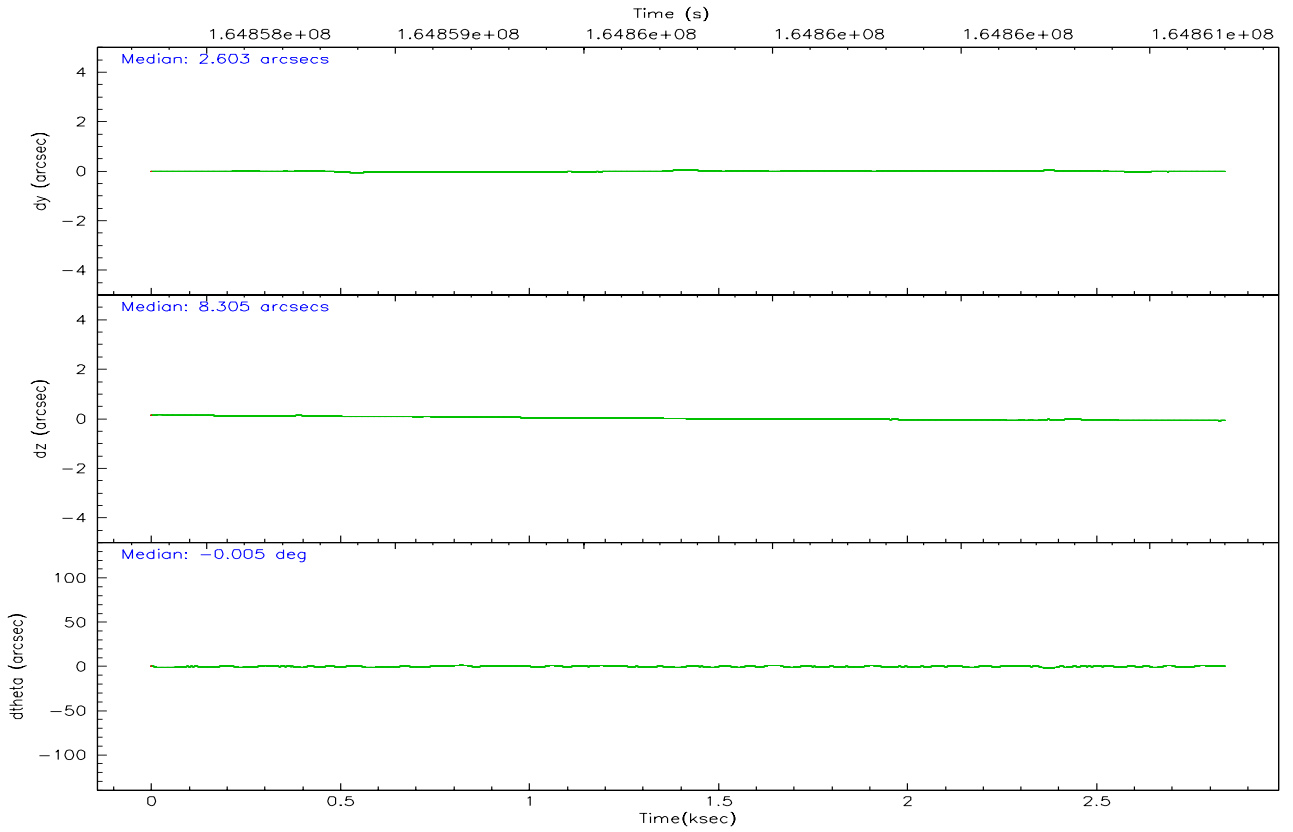
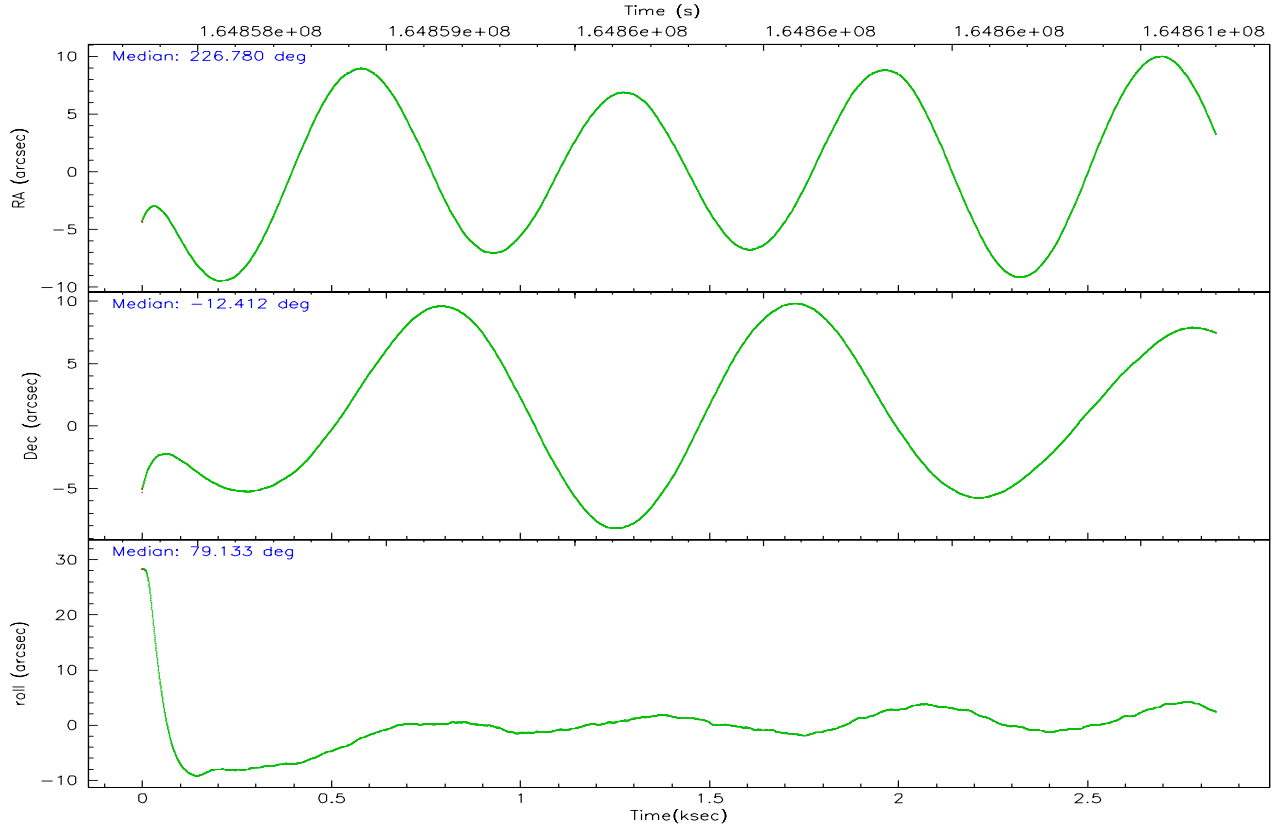
	ccd 2	ccd 3	ccd 5	ccd 6	ccd 7	ccd 8
grade 0 events	1028	975	2127	915	581	1489
	5%	5%	7%	5%	2%	6%
grade 1 events	14	9	20	11	17	19
	0%	0%	0%	0%	0%	0%
grade 2 events	399	425	3741	445	2266	999
	2%	2%	13%	2%	9%	4%
grade 3 events	166	182	273	204	439	445
	0%	1%	0%	1%	1%	2%
grade 4 events	176	208	284	210	470	423
	0%	1%	1%	1%	1%	1%
grade 5 events	644	745	1224	812	1544	1033
	3%	4%	4%	4%	6%	4%
grade 6 events	357	322	6462	430	5403	1321
	1%	1%	23%	2%	22%	6%
grade 7 events	15367	13767	13186	15037	13366	16279
	84%	82%	48%	83%	55%	73%

2.2 Compared Parameters

Parameter	Planned	Actual	Parameter	Planned	Actual
Instrument	ACIS	ACIS	Obspar format version number	6	6
Detector	ACIS-235678	ACIS-235678	Obspar file type	PREDICTED	ACTUAL
Grating	NONE	NONE	Obspar update status	NONE	UPDATED
Data mode	FAINT	FAINT	On-chip summing requested	N	N
Observation mode	POINTING	POINTING	Subarray requested	NONE	NONE
Pointing RA	226.789710	226.7801187303225	Alternating exposures requested	N	N
Pointing Dec	-12.437653	-12.41213645066206	Primary exposure time	0.000000	3.2
Pointing Roll	78.987311	79.14205032868165			
SIM focus pos (mm)	-0.684267	-0.6828225247311905			
SIM defocus (mm)	0	0.001444936568705701			
SIM translation stage pos (mm)	-190.132523	-190.1425803651734			
SIM translation stage offset (mm)	0	0.01005778216563158			
Observation start time	164858492.184000	164857477.53997			
Observation start date	2003-03-24T02:00:28	2003-03-24T01:44:37			
Observation end time	164861192.184000	164861587.79014			
Observation end date	2003-03-24T02:45:28	2003-03-24T02:53:07			
Read mode	TIMED	TIMED			

2.3 Aspect



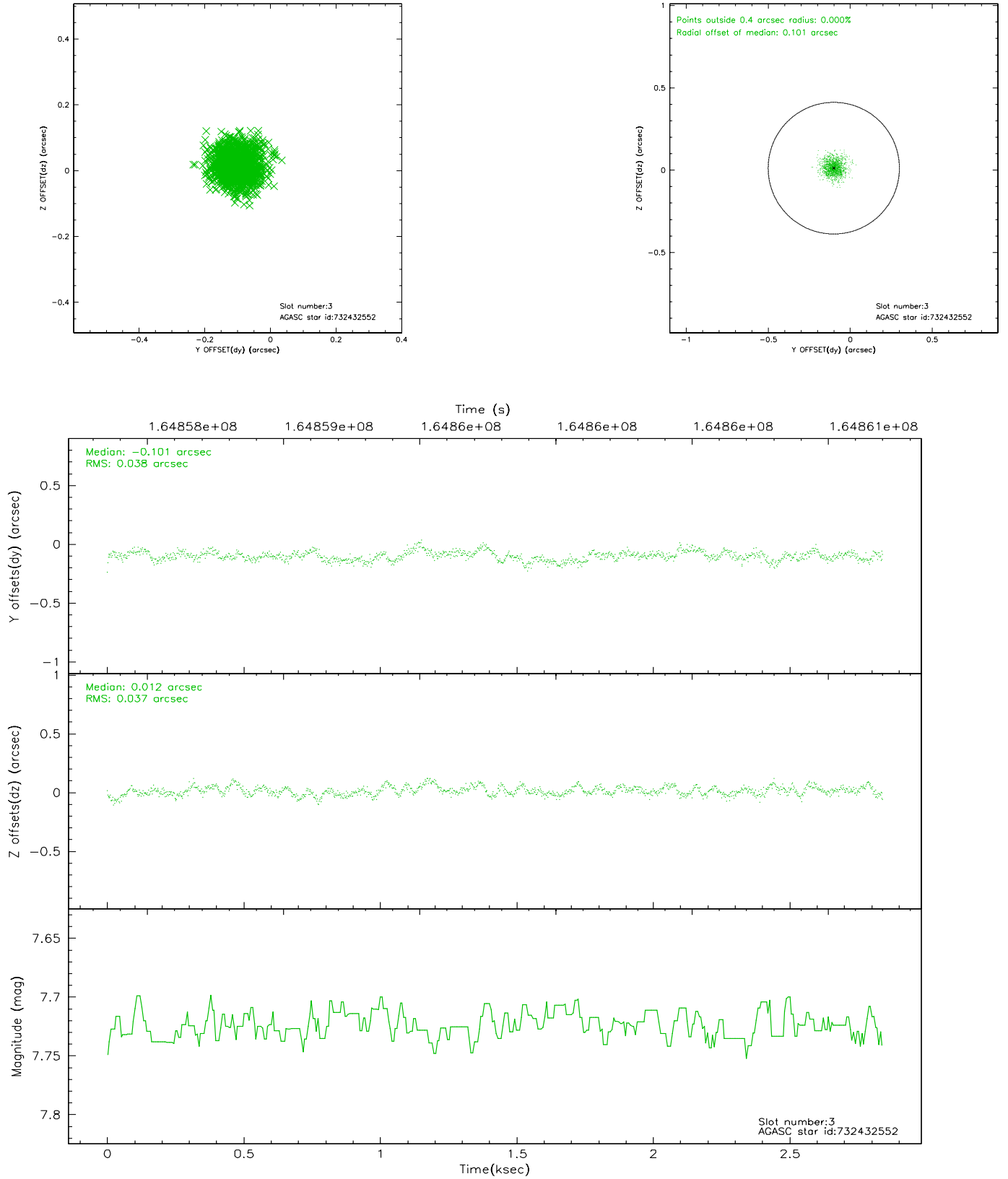


Slot Statistics

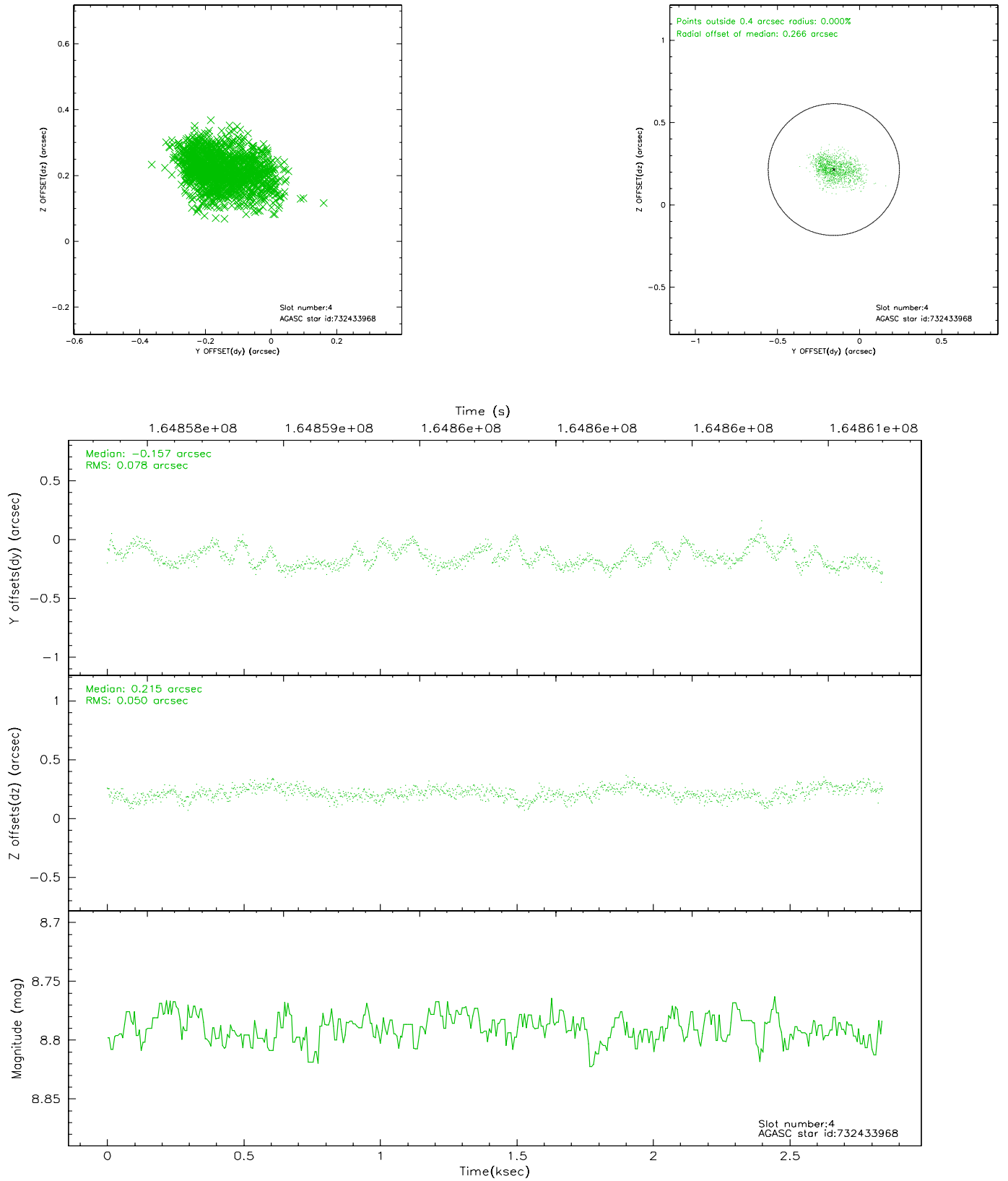
slot	status	id	mag	n_pts	med_dy	med_dz	dr1	dr2	ra	dec	mean_y	mean_z
0	FID	ACIS-S-1	7.19	694	0.050	0.018	0.007	0.013	0.000000	0.000000	940.83	-1725.10
1	FID	ACIS-S-2	7.11	693	-0.022	0.019	0.006	0.010	0.000000	0.000000	-753.88	-1731.96
2	FID	ACIS-S-4	7.20	693	-0.054	-0.032	0.005	0.009	0.000000	0.000000	2156.98	176.65
3	GUIDE	732432552	7.72	1386	-0.101	0.012	0.057	0.093	227.026704	-12.051419	1524.03	-553.02
4	GUIDE	732433968	8.79	1386	-0.157	0.215	0.098	0.159	227.506119	-12.142119	1524.32	-2272.31
5	GUIDE	732437944	8.74	1387	0.222	-0.302	0.108	0.172	226.115380	-12.885074	-2034.76	2012.26
6	GUIDE	732438664	9.09	1387	0.144	-0.232	0.101	0.164	226.237456	-12.395587	-225.55	1935.48
7	GUIDE	732436000	9.63	1386	-0.114	0.301	0.113	0.191	227.529265	-12.252924	1146.88	-2425.84

2.4 Star Slots

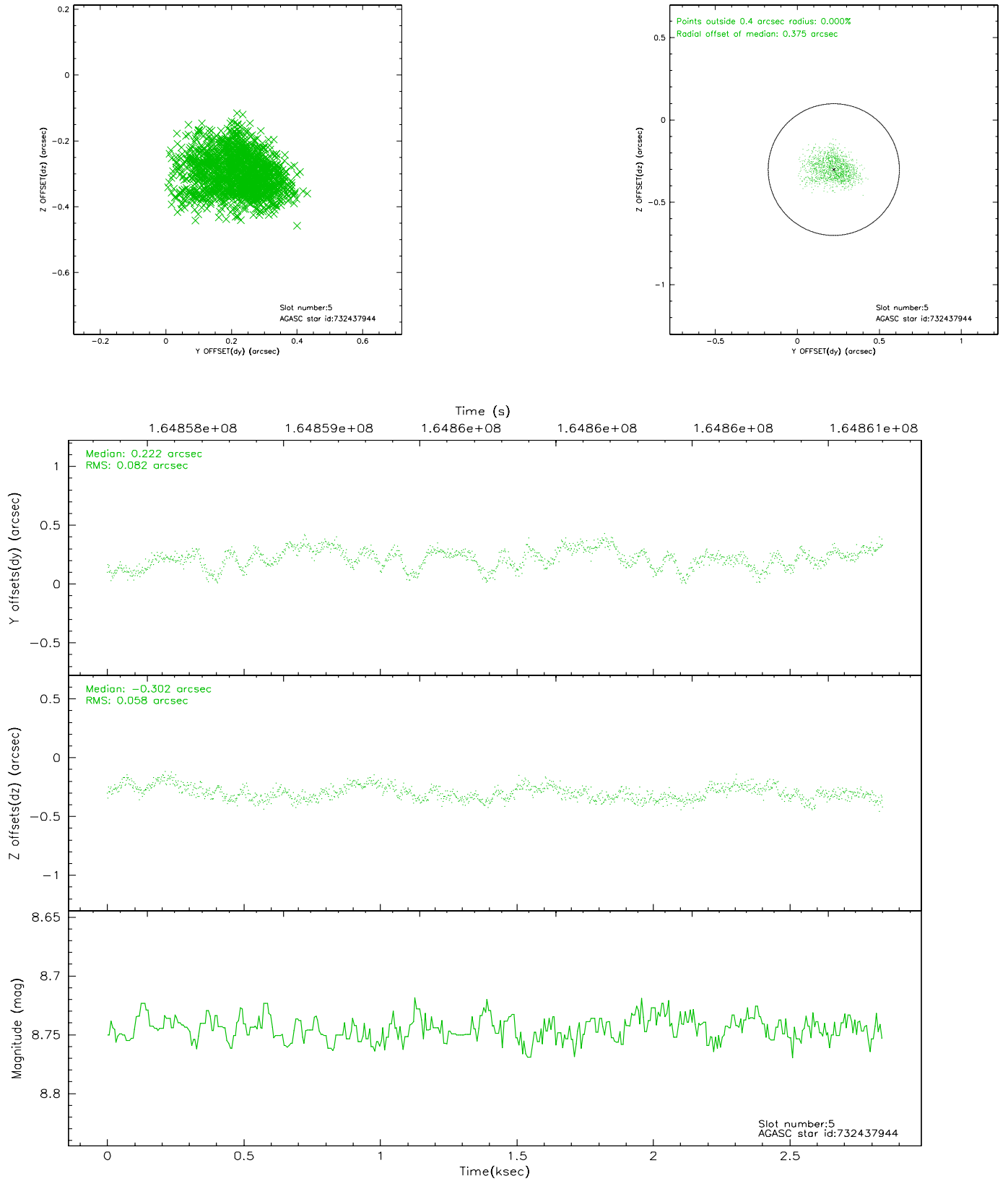
2.4.1 Slot 3



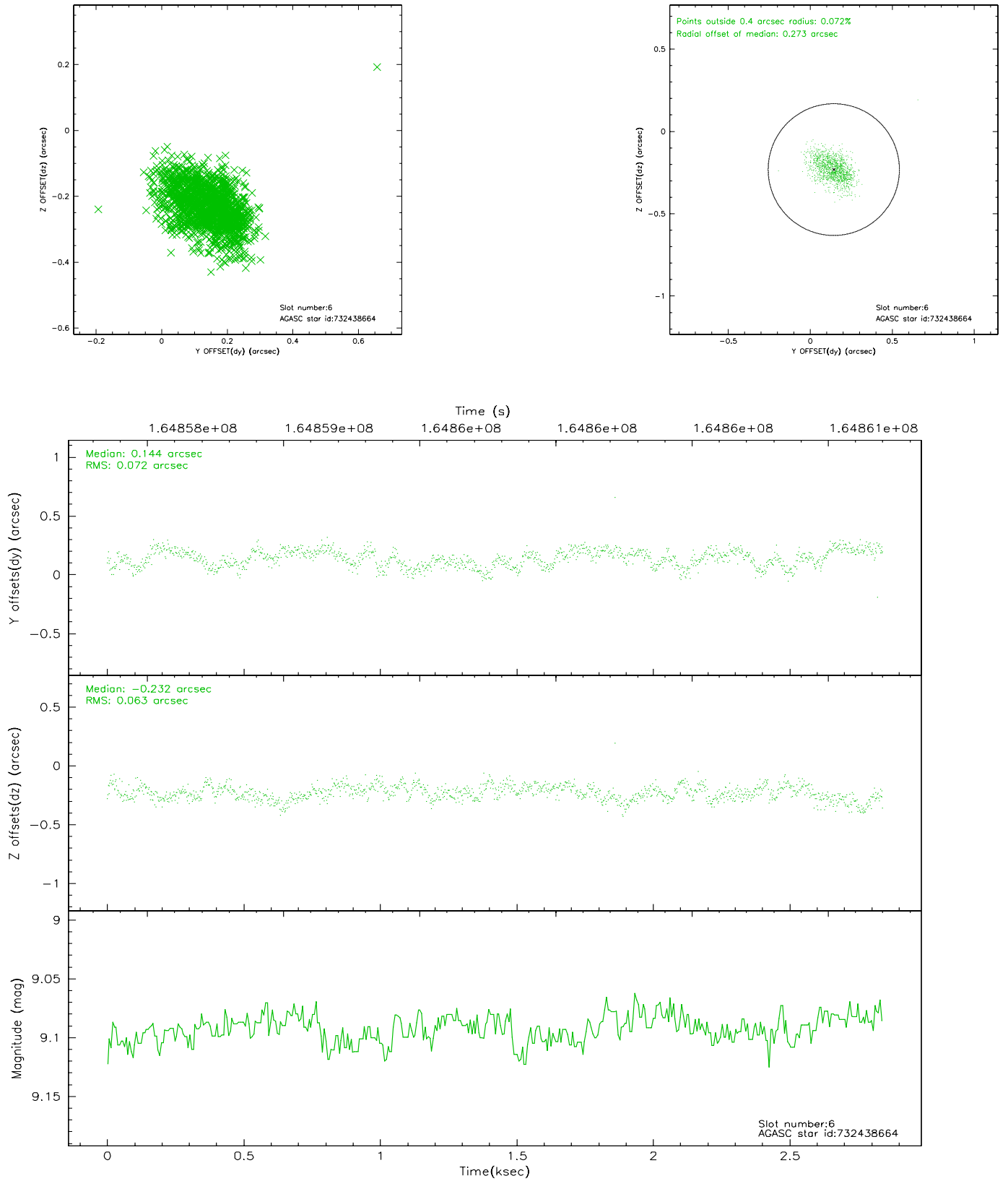
2.4.2 Slot 4



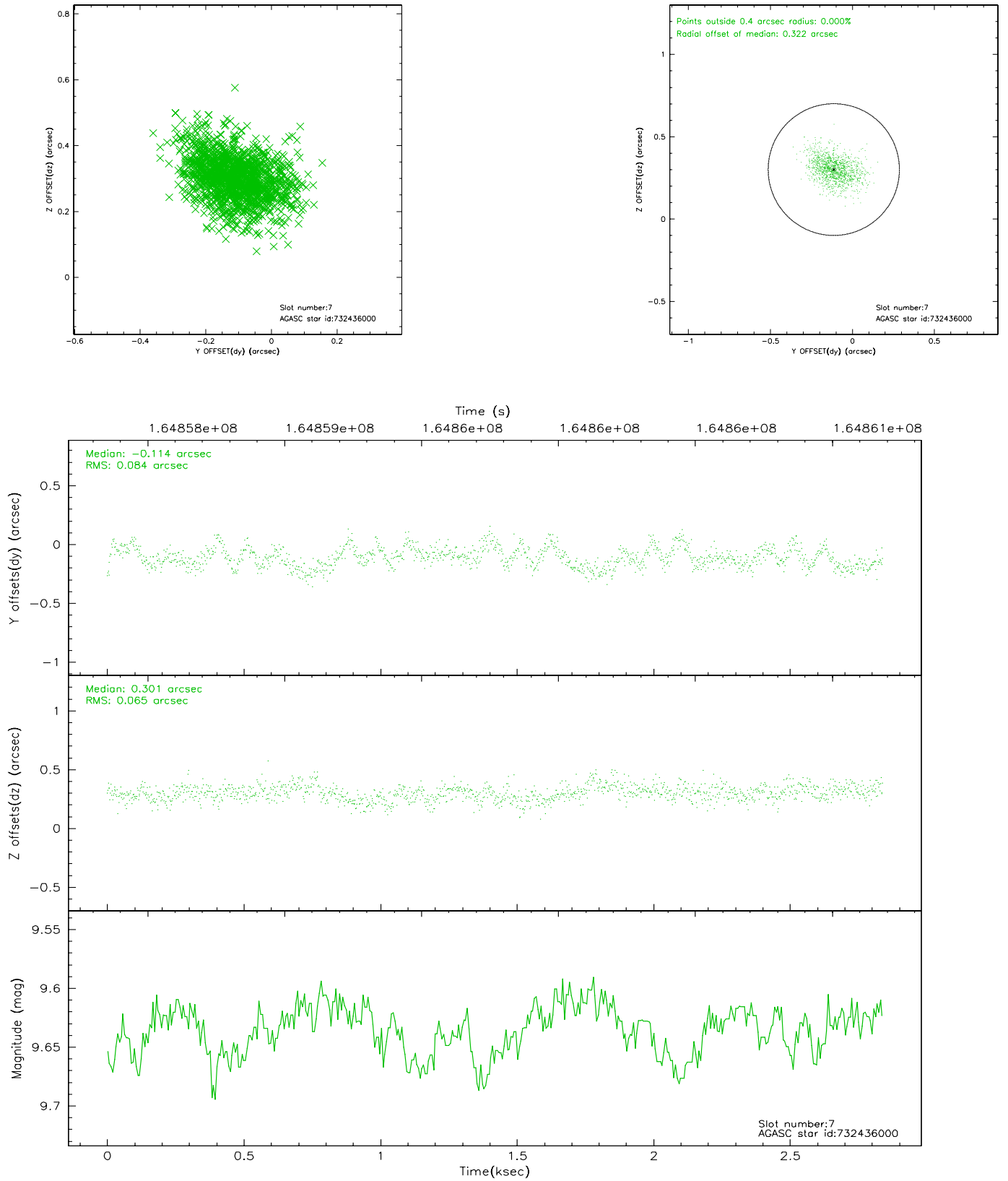
2.4.3 Slot 5



2.4.4 Slot 6

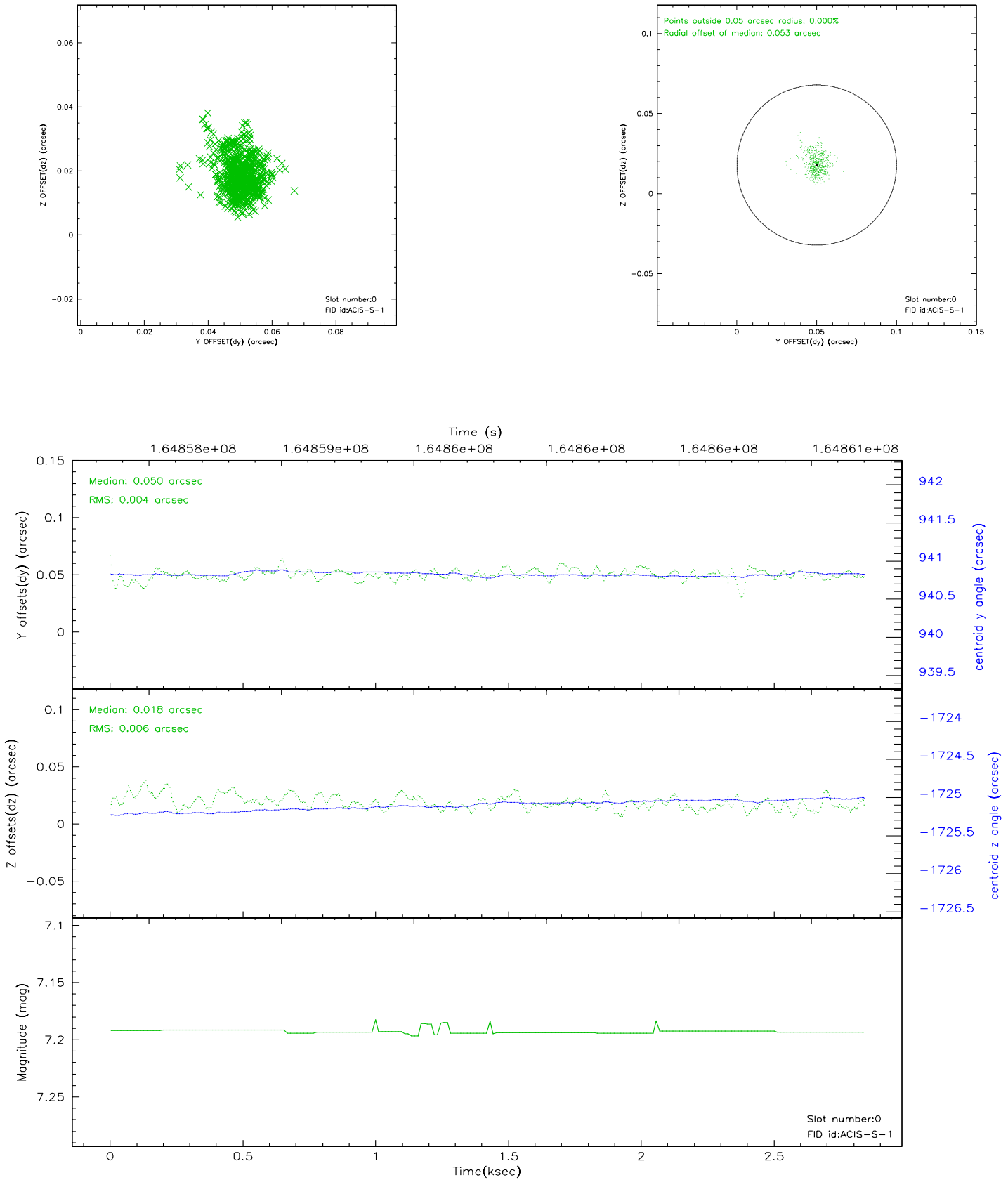


2.4.5 Slot 7

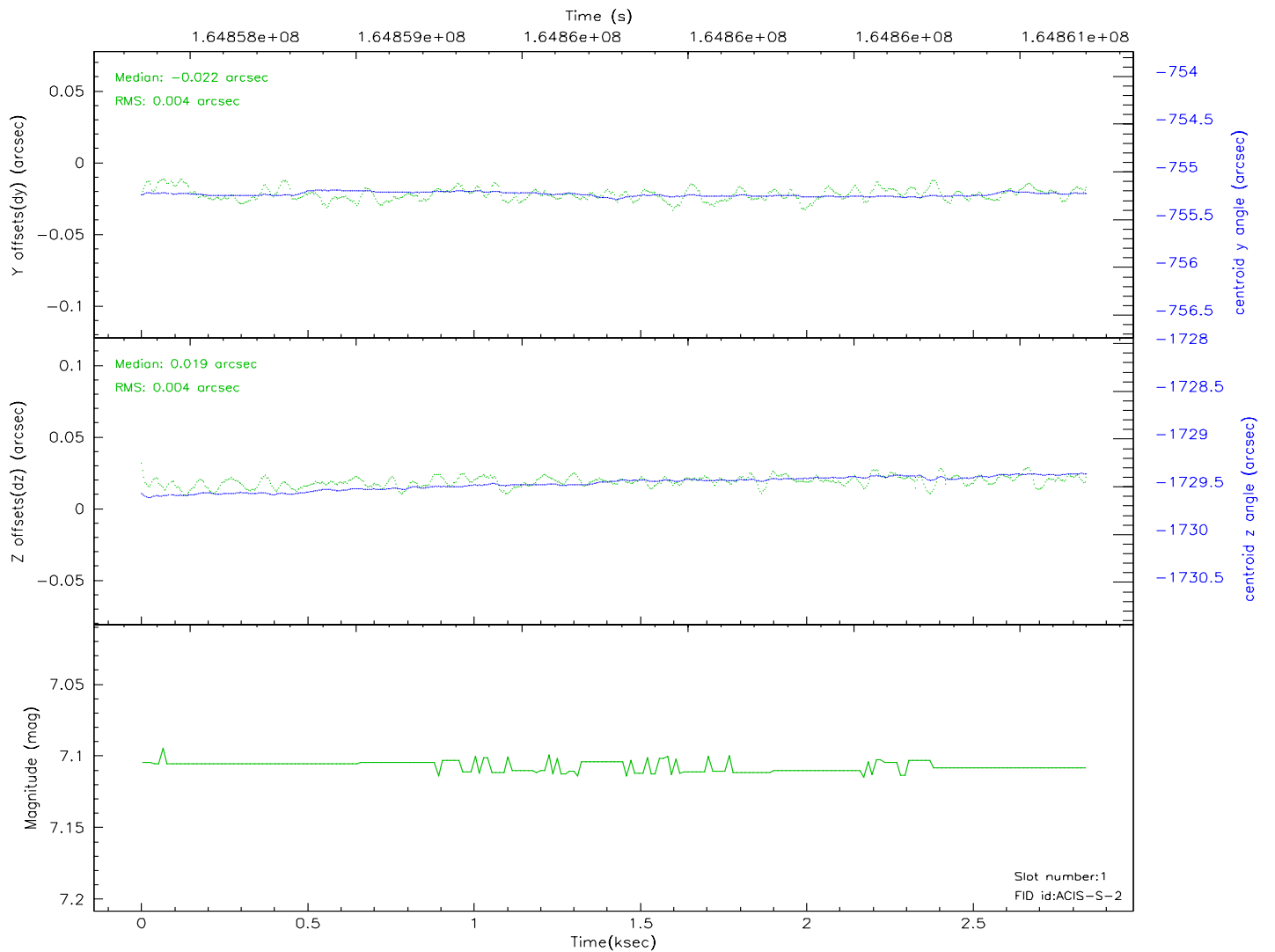
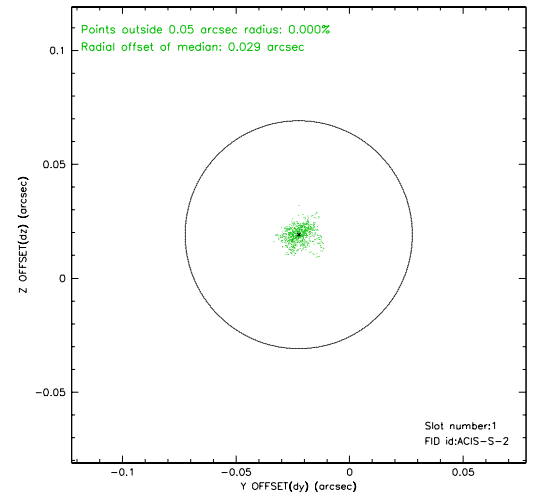
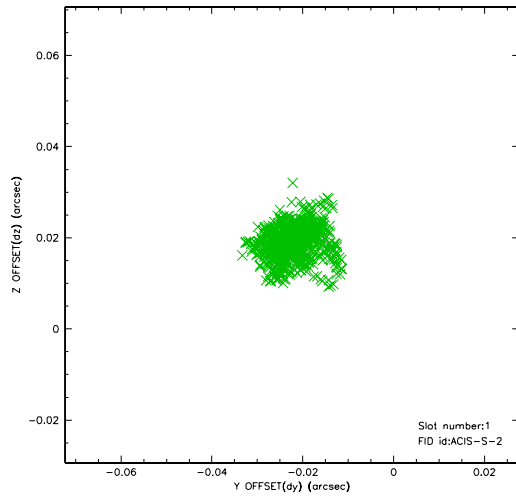


2.5 FID Slots

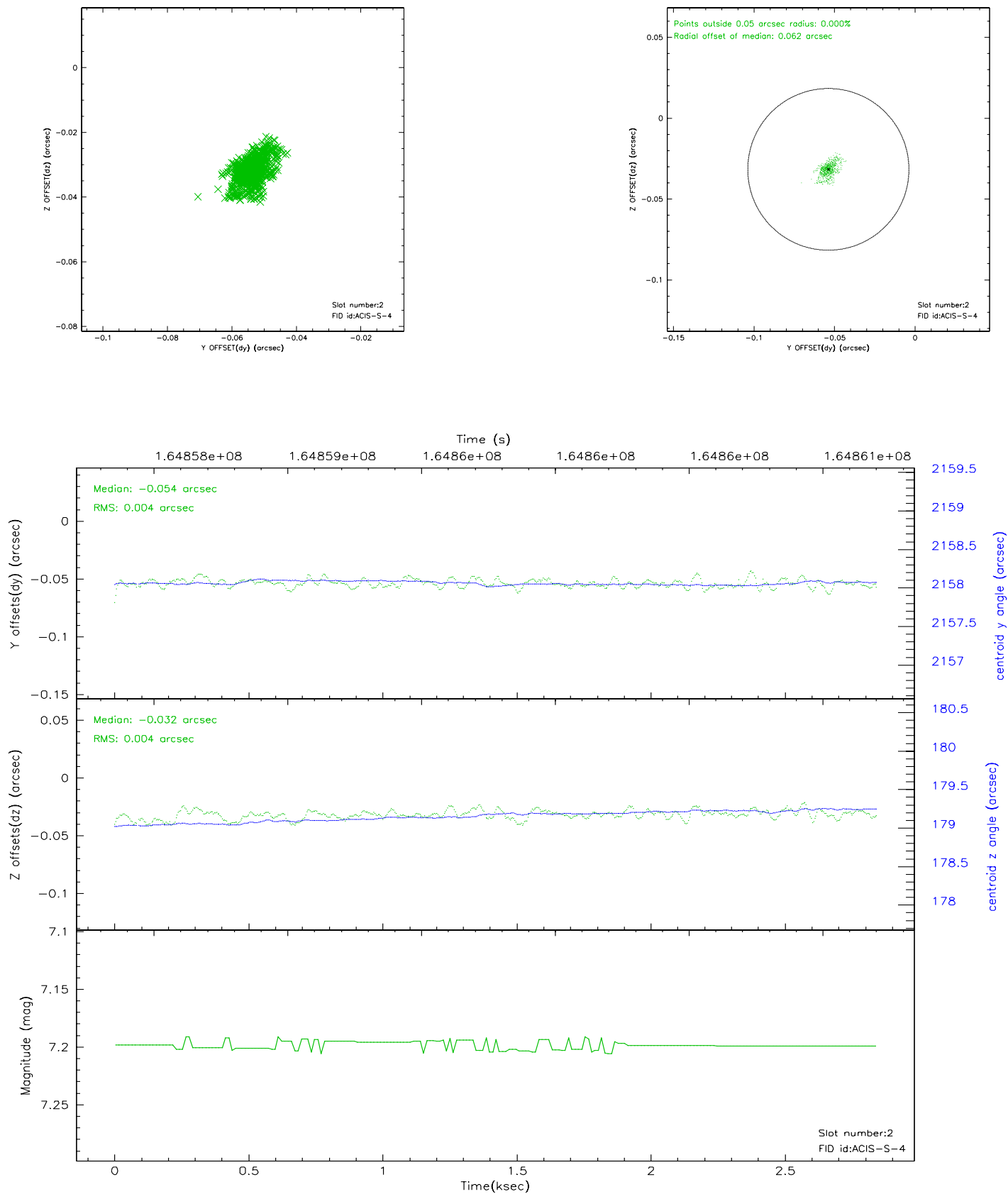
2.5.1 Slot 0



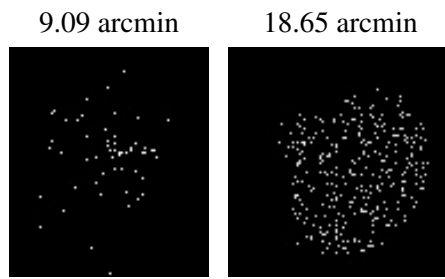
2.5.2 Slot 1



2.5.3 Slot 2



3 Point Sources



A Summary

A.1 Status

V&V Scientist	Jen Lauer
V&V Date (YYYY-MM-DD)	2006.07.25
V&V Edition	1
V&V Disposition and Status	OK
V&V Charge Time	2.77

A.2 Comments