

V&V Reference Report

L2 ASCDS Version : 7.6.8.1

Observation 4039 - L2 Version 001
Chandra X-Ray Center

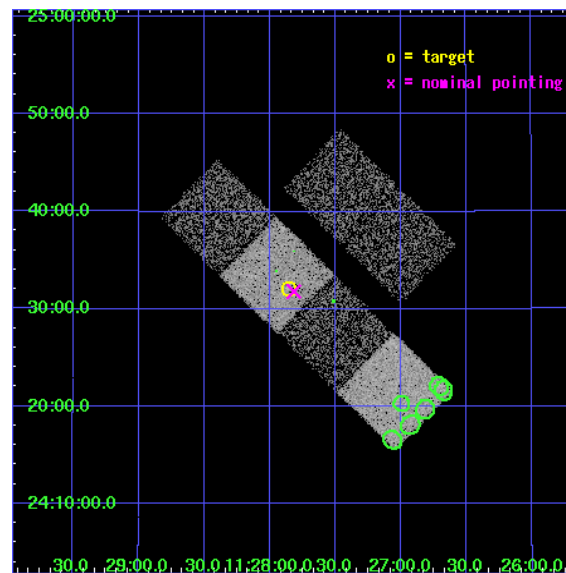
L2 Processing Date : Aug 4 2006

Contents

1	Front	2
2	OBI	3
2.1	OBI	3
2.1.1	Images	3
2.1.2	Bias	3
2.1.3	Parameters	4
2.1.4	Events	4
2.2	Compared Parameters	5
2.3	Aspect	6
2.4	Star Slots	9
2.4.1	Slot 3	9
2.4.2	Slot 4	10
2.4.3	Slot 5	11
2.4.4	Slot 6	12
2.4.5	Slot 7	13
2.5	FID Slots	14
2.5.1	Slot 0	14
2.5.2	Slot 1	15
2.5.3	Slot 2	16
3	Point Sources	17
A	Summary	18
A.1	Status	18
A.2	Comments	18

1 Front

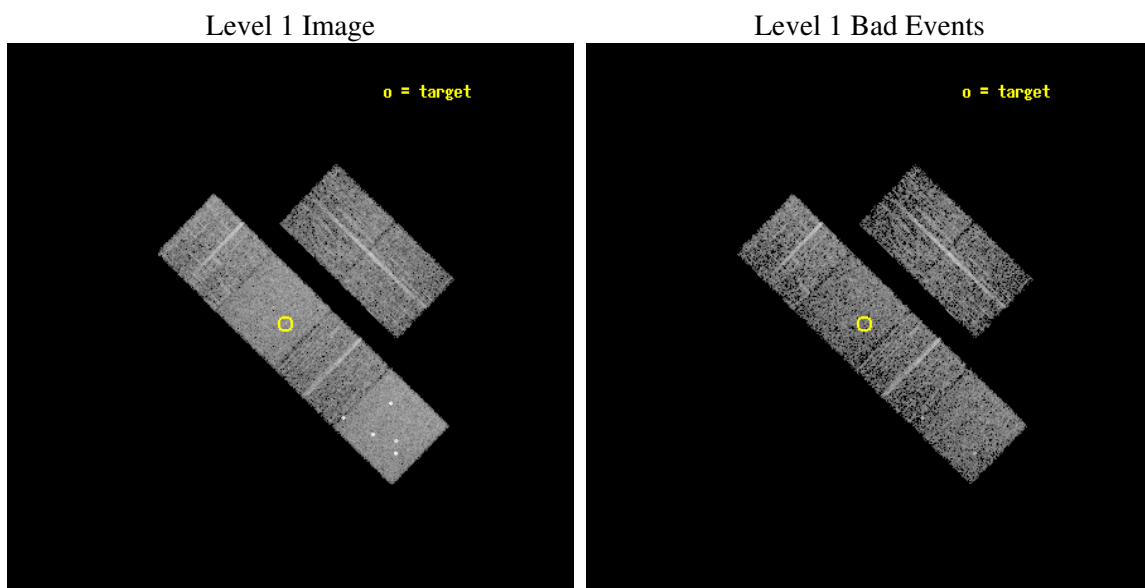
seq_num	700718
obs_id	4039
title	WHY DO WE SEE BROAD LINES IN X-RAY ABSORBED AGN?
observer	Dr. BELINDA WILKES
object	2MASS112751+243208
dtcycle	0
cycle	P
ra_targ	171.962917
dec_targ	24.535583
ra_nom	171.954141842
dec_nom	24.530237060361
roll_nom	224.24494760012
revision	2
ontime	4259.1999841332
livetime	4205.2674293518
ontime2	4259.1999841332
ontime3	4259.1999841332
ontime5	4259.1999841332
ontime6	4259.1999841332
ontime7	4259.1999841332
ontime8	4259.1999841332
l2events	39103



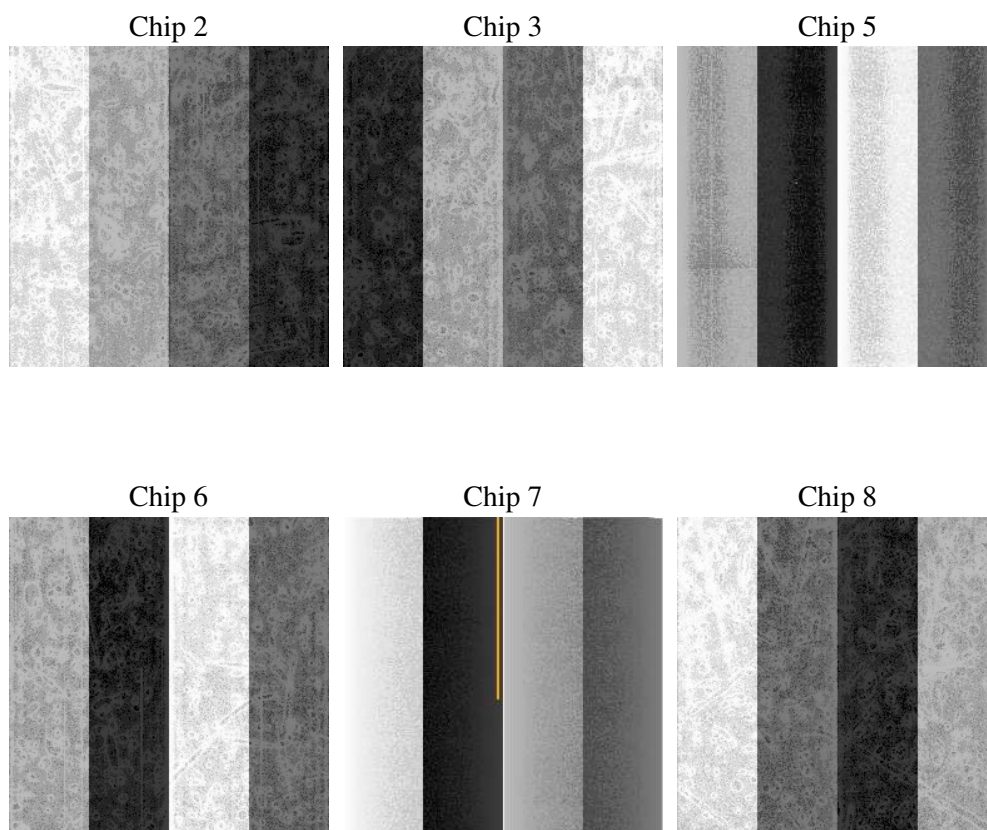
2 OBI

2.1 OBI

2.1.1 Images



2.1.2 Bias



2.1.3 Parameters

obi_num	0
ascdsver	7.6.8.1
caldsver	3.2.2
date	2006-08-04T16:49:50
revision	2

sched_exp_time	4300.000000
ontime	4265.1647402644
ontime2	4265.1647203565
ontime3	4265.1647203565
ontime5	4265.1647402644
ontime6	4265.1647402644
ontime7	4265.1647402644
ontime8	4265.1647203565
l1events	185040

2.1.4 Events

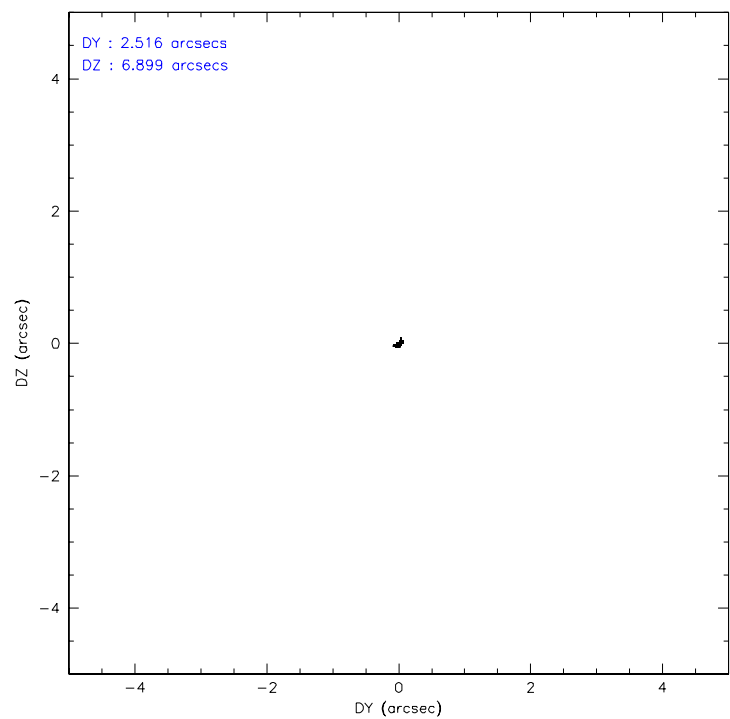
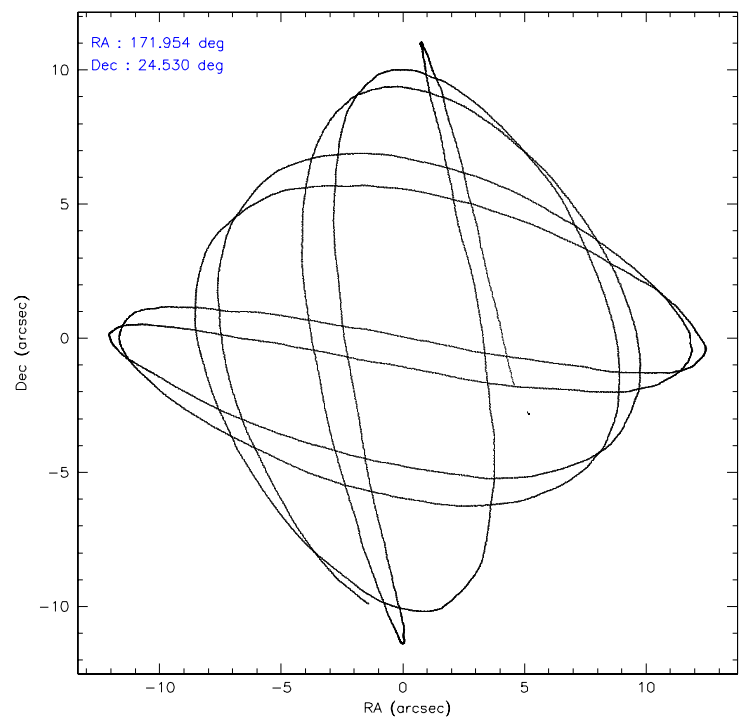
	ccd 2	ccd 3	ccd 5	ccd 6	ccd 7	ccd 8
level 1 events	25361	24692	40895	26132	34622	33338
rejected events	22341	21802	22022	23018	21581	26833
rejected %	88%	88%	53%	88%	62%	80%

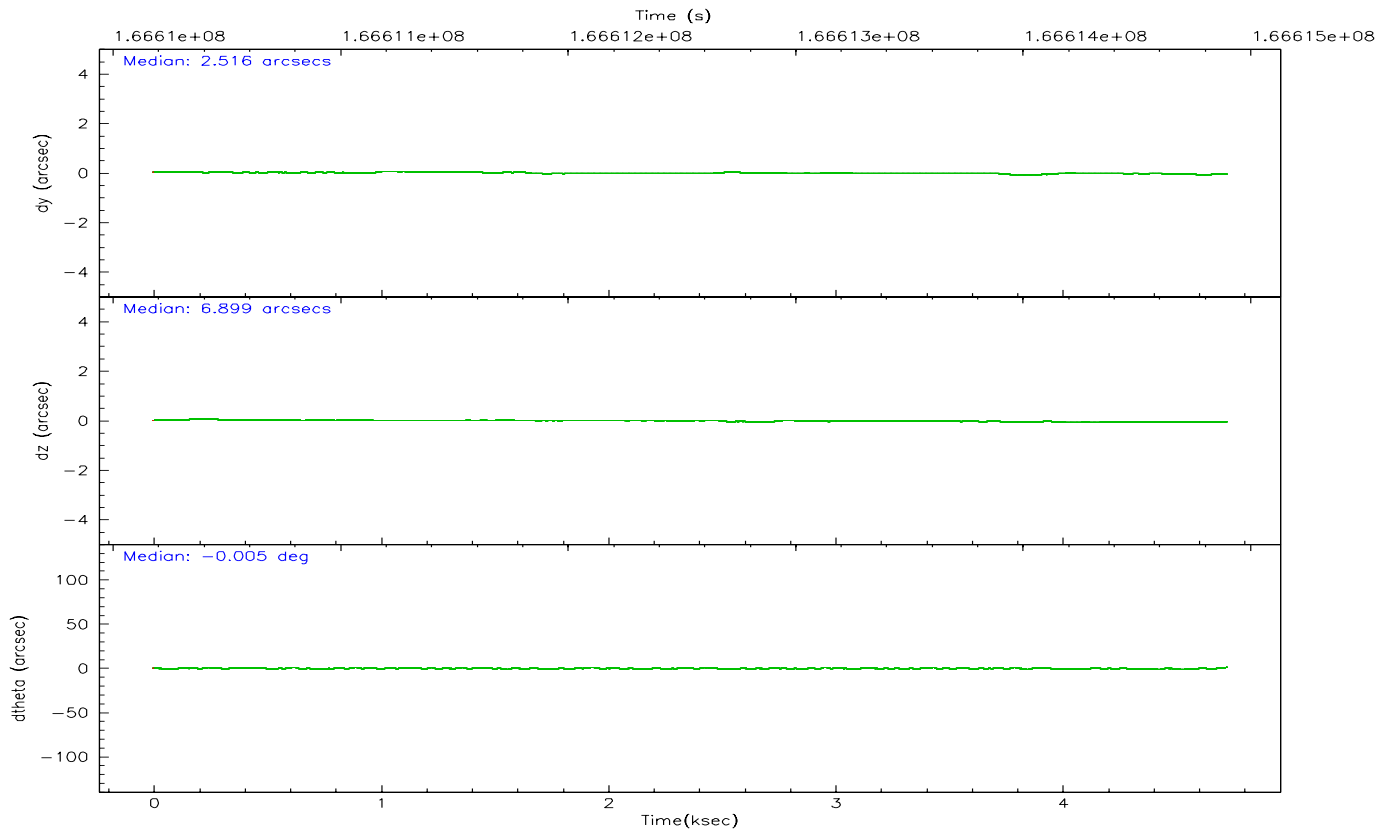
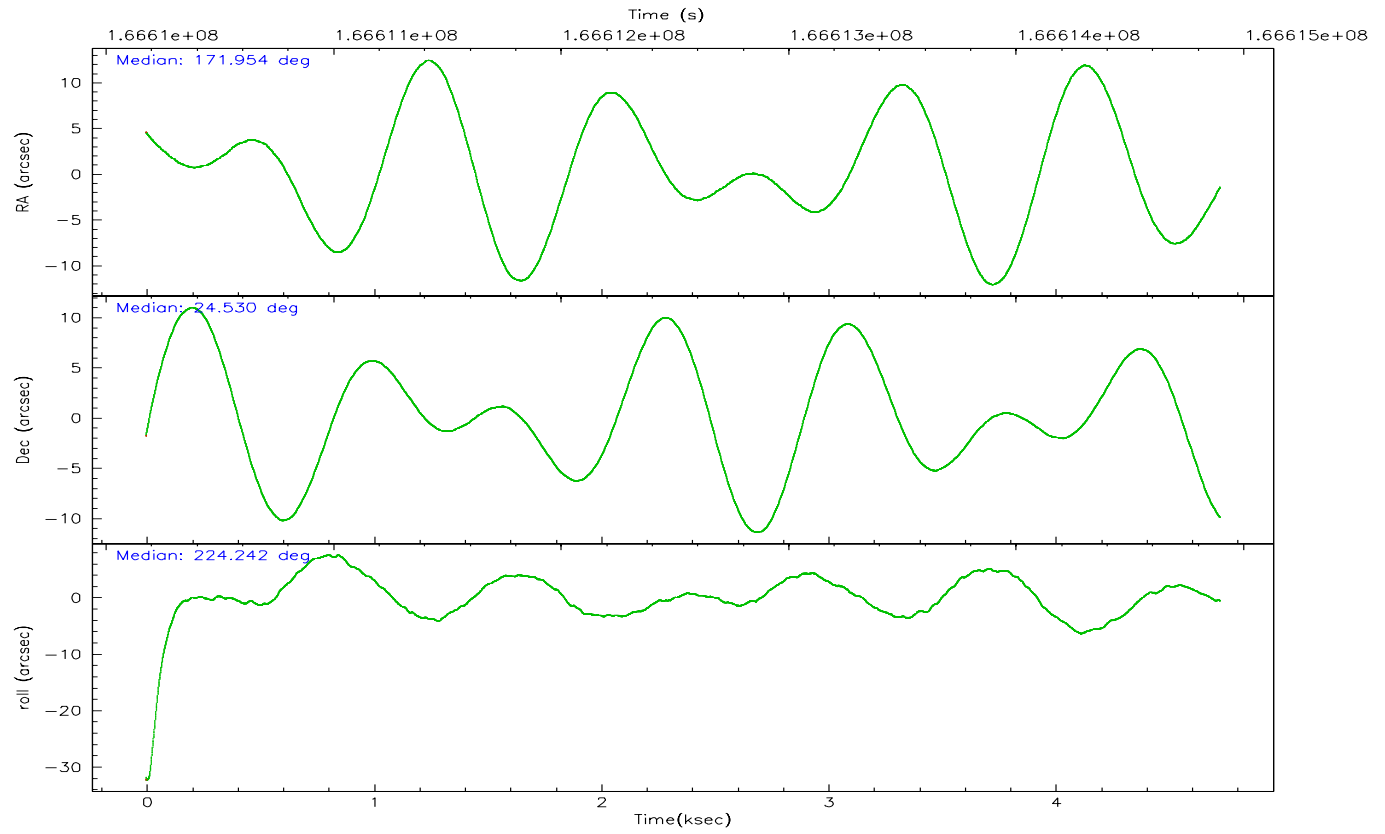
	ccd 2	ccd 3	ccd 5	ccd 6	ccd 7	ccd 8
grade 0 events	1383	1264	3110	1286	821	2049
	5%	5%	7%	4%	2%	6%
grade 1 events	20	15	117	14	24	16
	0%	0%	0%	0%	0%	0%
grade 2 events	605	540	5441	614	3239	1351
	2%	2%	13%	2%	9%	4%
grade 3 events	275	312	394	316	679	686
	1%	1%	0%	1%	1%	2%
grade 4 events	274	285	463	288	713	672
	1%	1%	1%	1%	2%	2%
grade 5 events	967	1094	1953	1204	2307	1445
	3%	4%	4%	4%	6%	4%
grade 6 events	484	491	9475	611	7601	1760
	1%	1%	23%	2%	21%	5%
grade 7 events	21353	20691	19942	21799	19238	25359
	84%	83%	48%	83%	55%	76%

2.2 Compared Parameters

Parameter	Planned	Actual	Parameter	Planned	Actual
Instrument	ACIS	ACIS	Obspar format version number	6	6
Detector	ACIS-235678	ACIS-235678	Obspar file type	PREDICTED	ACTUAL
Grating	NONE	NONE	Obspar update status	NONE	UPDATED
Data mode	FAINT	FAINT	On-chip summing requested	N	N
Observation mode	POINTING	POINTING	Subarray requested	NONE	NONE
Pointing RA	171.961860	171.9541418419956	Alternating exposures requested	N	N
Pointing Dec	24.556468	24.53023706036149	Primary exposure time	0.000000	3.2
Pointing Roll	224.085174	224.2449476001248			
SIM focus pos (mm)	-0.684267	-0.6828225247311905			
SIM defocus (mm)	0	0.001444936568705701			
SIM translation stage pos (mm)	-190.132523	-190.1400660498719			
SIM translation stage offset (mm)	0	0.00754346686406393			
Observation start time	166610597.184000	166609515.75139			
Observation start date	2003-04-13T08:42:13	2003-04-13T08:25:15			
Observation end time	166614897.184000	166615793.87665			
Observation end date	2003-04-13T09:53:53	2003-04-13T10:09:53			
Read mode	TIMED	TIMED			

2.3 Aspect



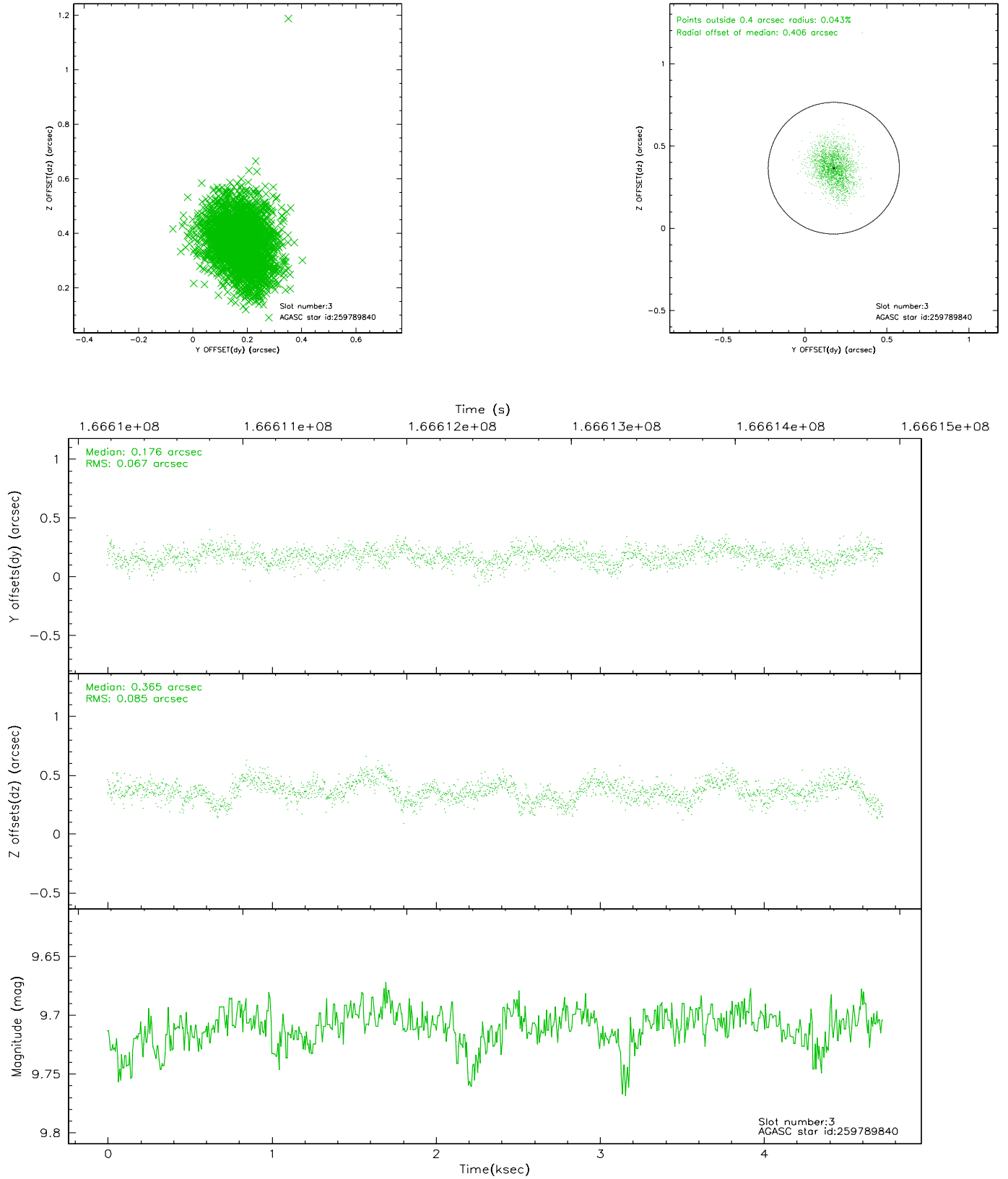


Slot Statistics

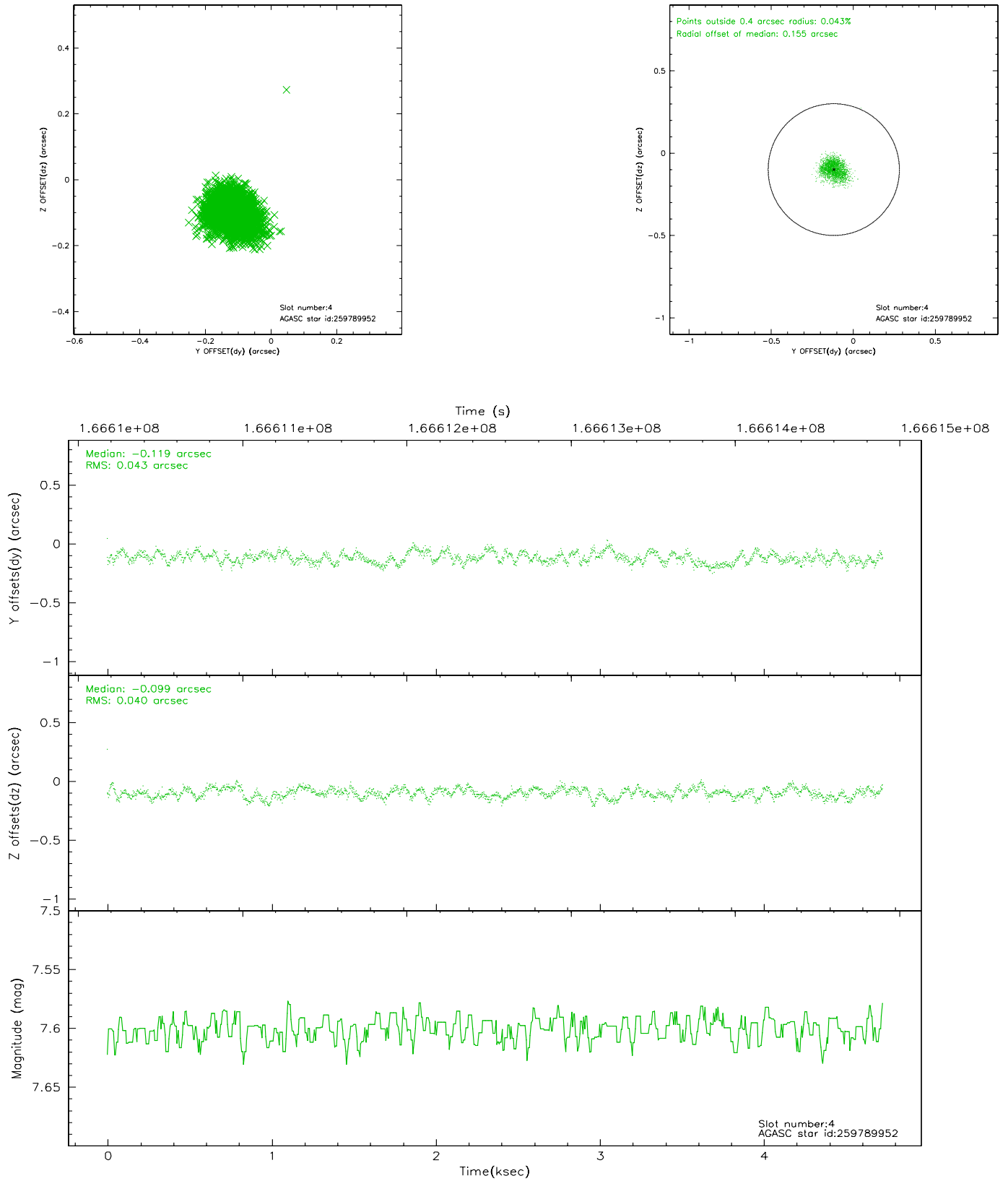
slot	status	id	mag	n_pts	med_dy	med_dz	dr1	dr2	ra	dec	mean_y	mean_z
0	FID	ACIS-S-1	7.19	1154	0.023	-0.024	0.007	0.011	0.000000	0.000000	940.90	-1723.72
1	FID	ACIS-S-4	7.20	1154	-0.062	0.010	0.006	0.010	0.000000	0.000000	2158.95	179.14
2	FID	ACIS-S-5	7.24	1154	0.013	0.027	0.006	0.011	0.000000	0.000000	-1806.31	174.23
3	GUIDE	259789840	9.71	2306	0.176	0.365	0.114	0.190	171.876904	24.512460	310.73	-78.98
4	GUIDE	259789952	7.60	2307	-0.119	-0.099	0.063	0.097	172.507484	24.884483	-2103.46	389.21
5	GUIDE	259792928	7.97	2307	-0.169	-0.150	0.069	0.109	171.787472	25.027803	-772.48	-1614.51
6	GUIDE	259795728	9.61	2306	0.187	-0.096	0.087	0.144	171.817290	24.133238	1401.34	763.61
7	GUIDE	259791040	8.03	1153	-0.145	-0.038	0.048	0.082	172.466818	24.947365	-2163.35	134.53

2.4 Star Slots

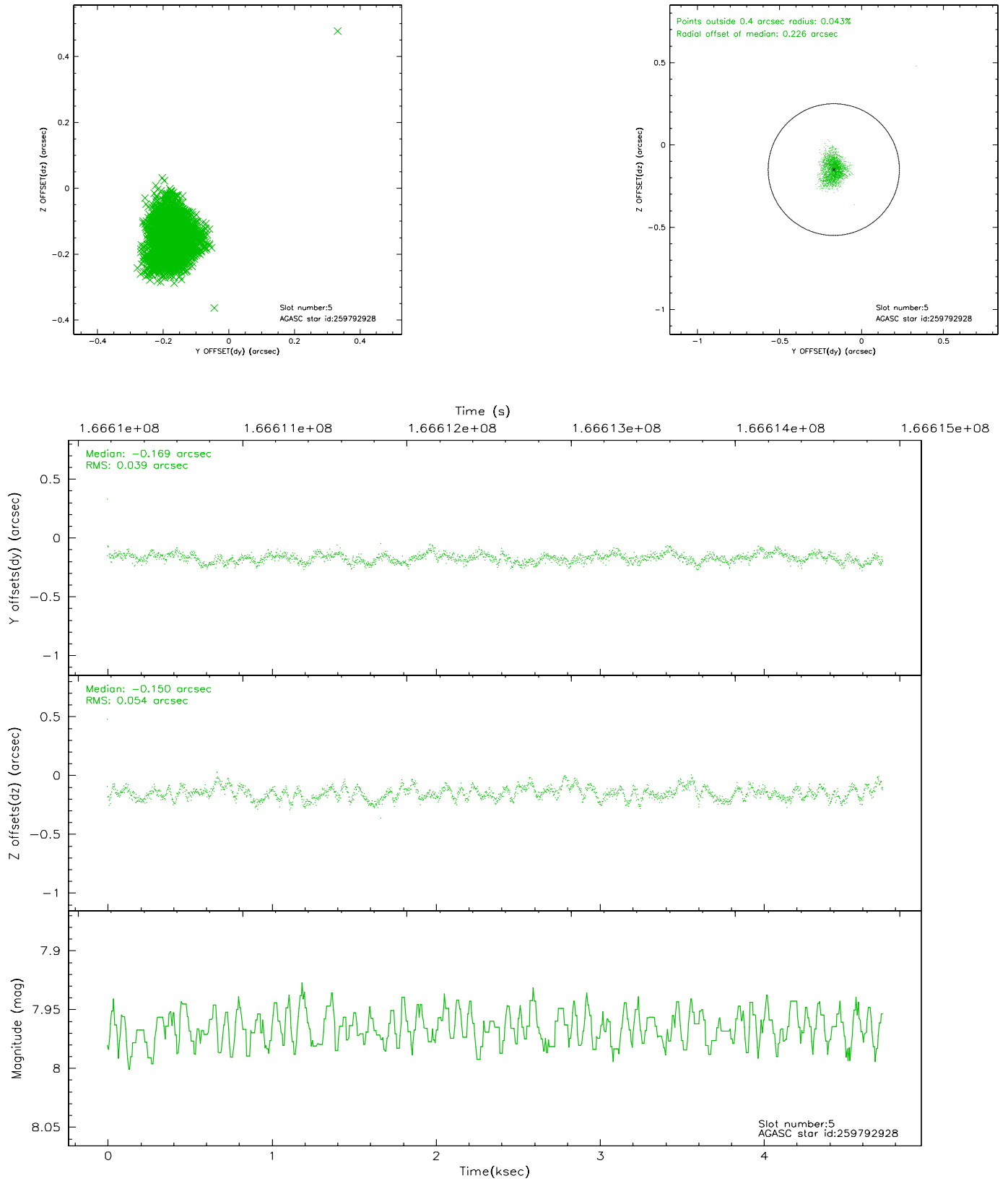
2.4.1 Slot 3



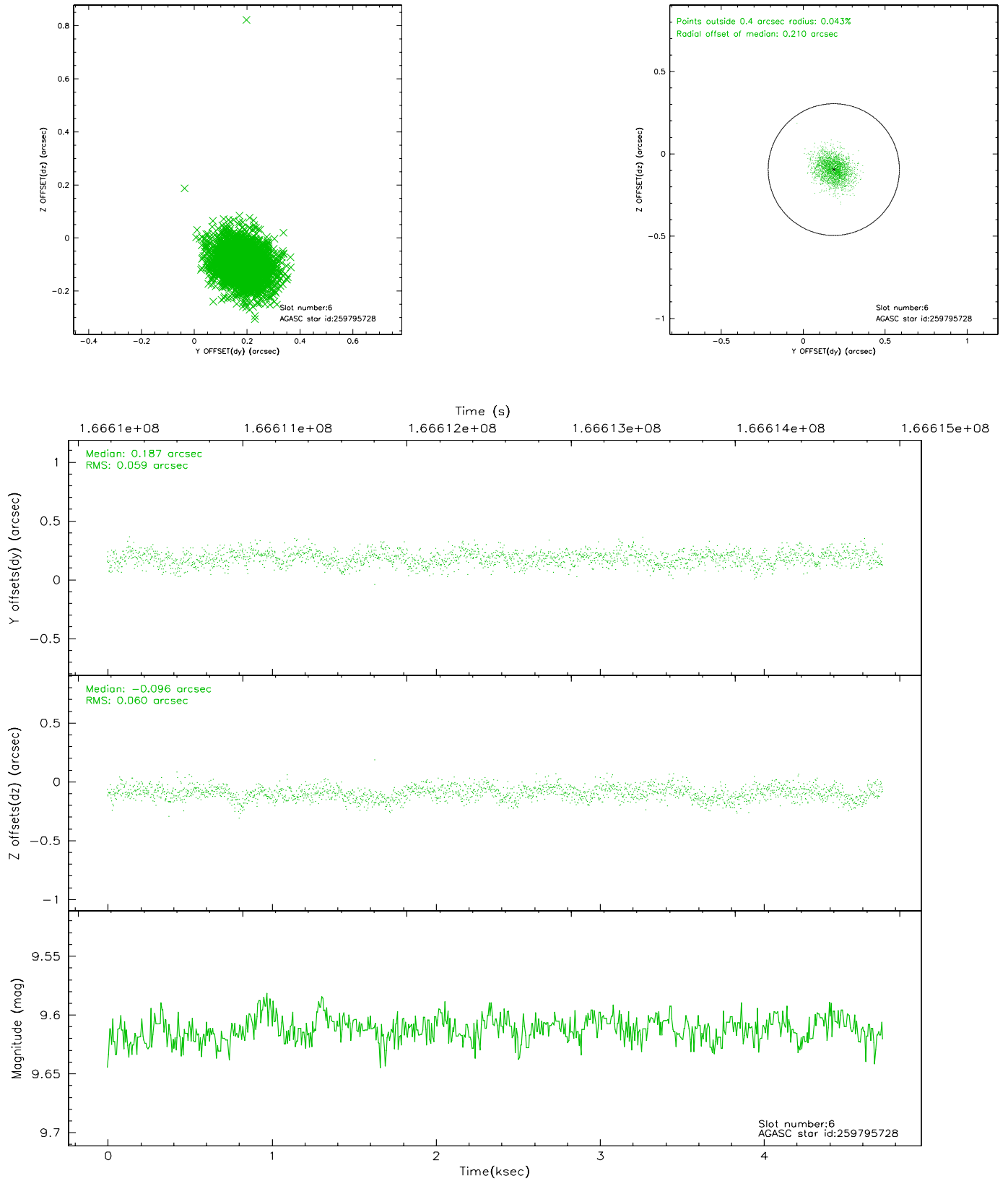
2.4.2 Slot 4



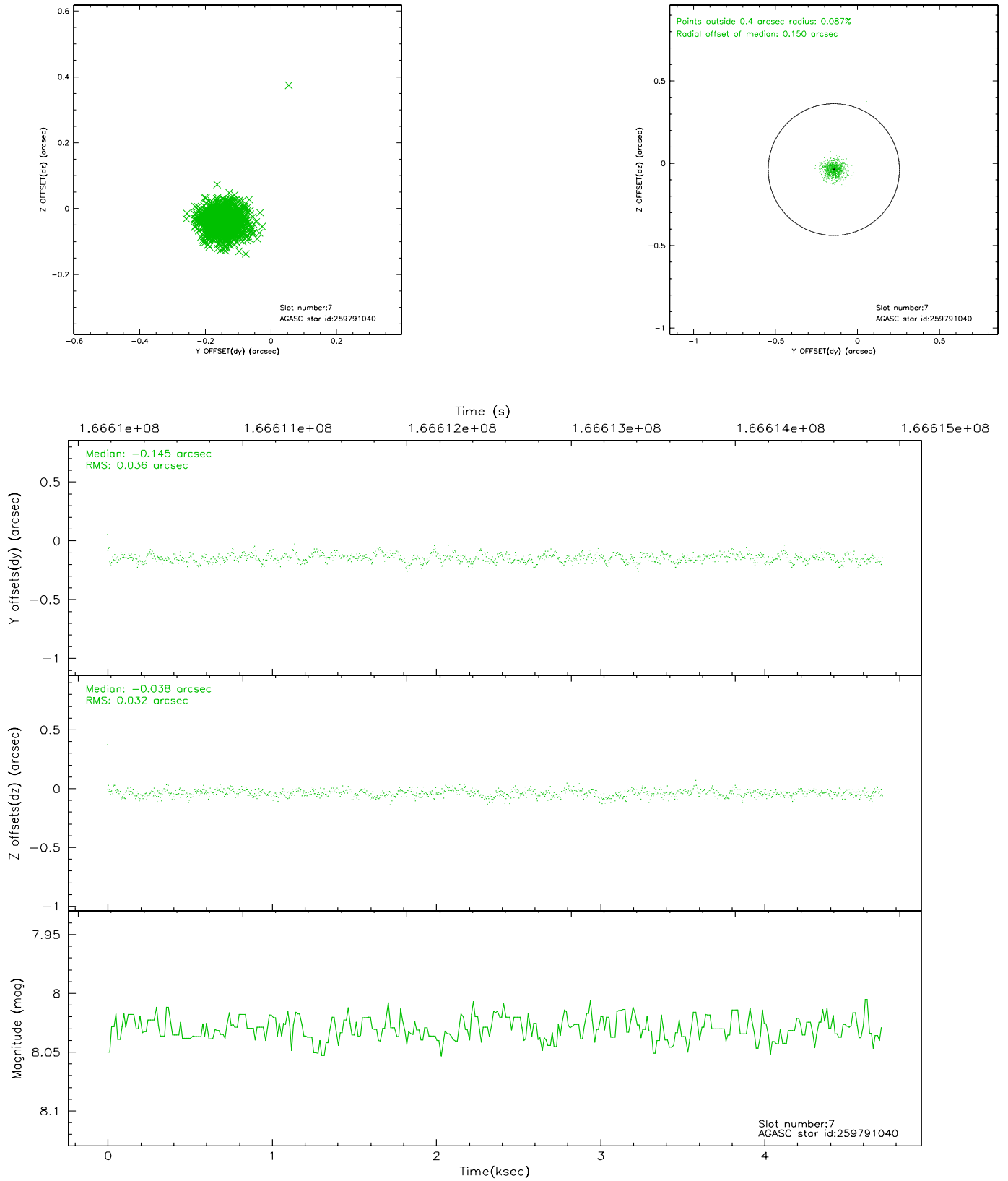
2.4.3 Slot 5



2.4.4 Slot 6

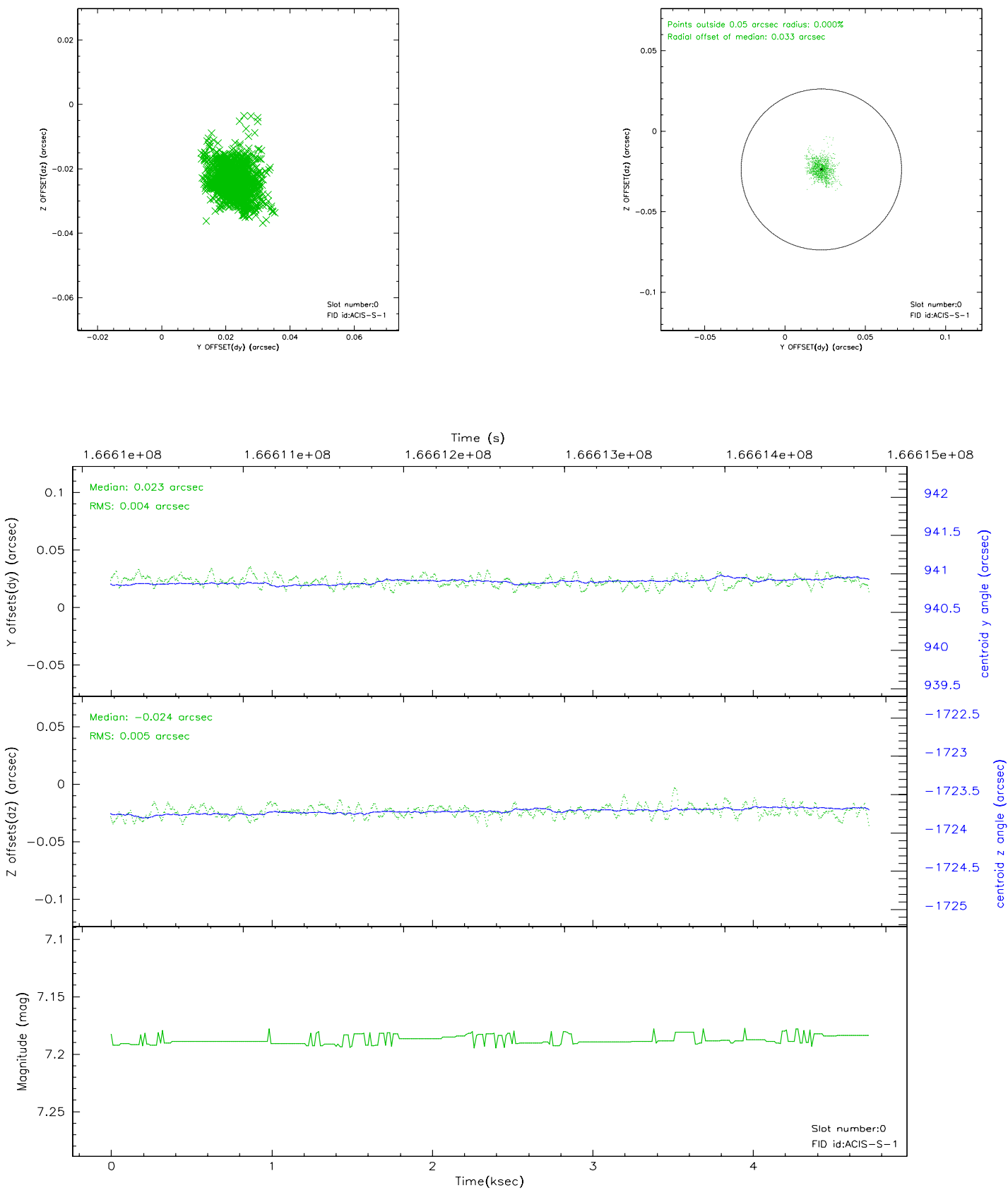


2.4.5 Slot 7

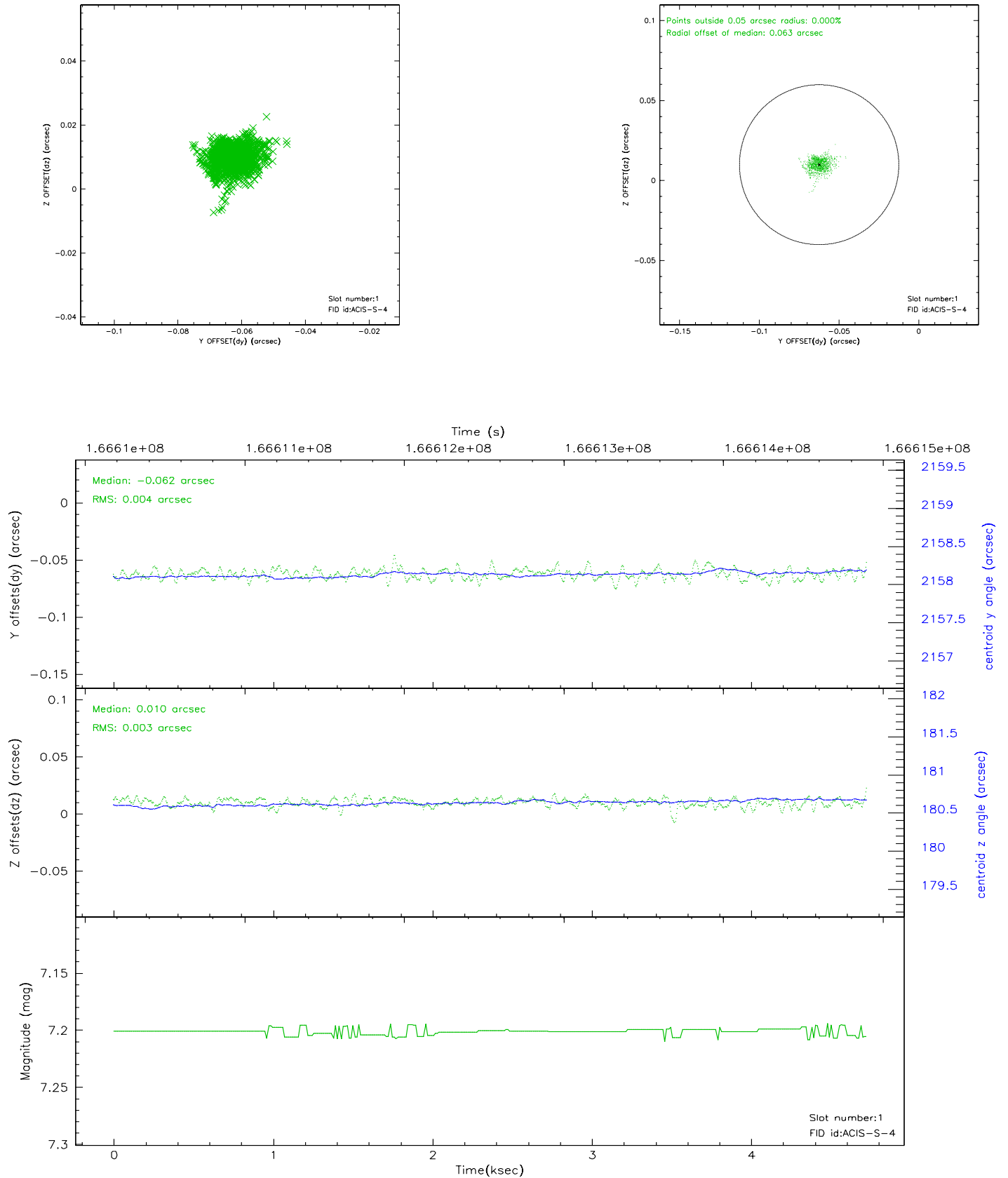


2.5 FID Slots

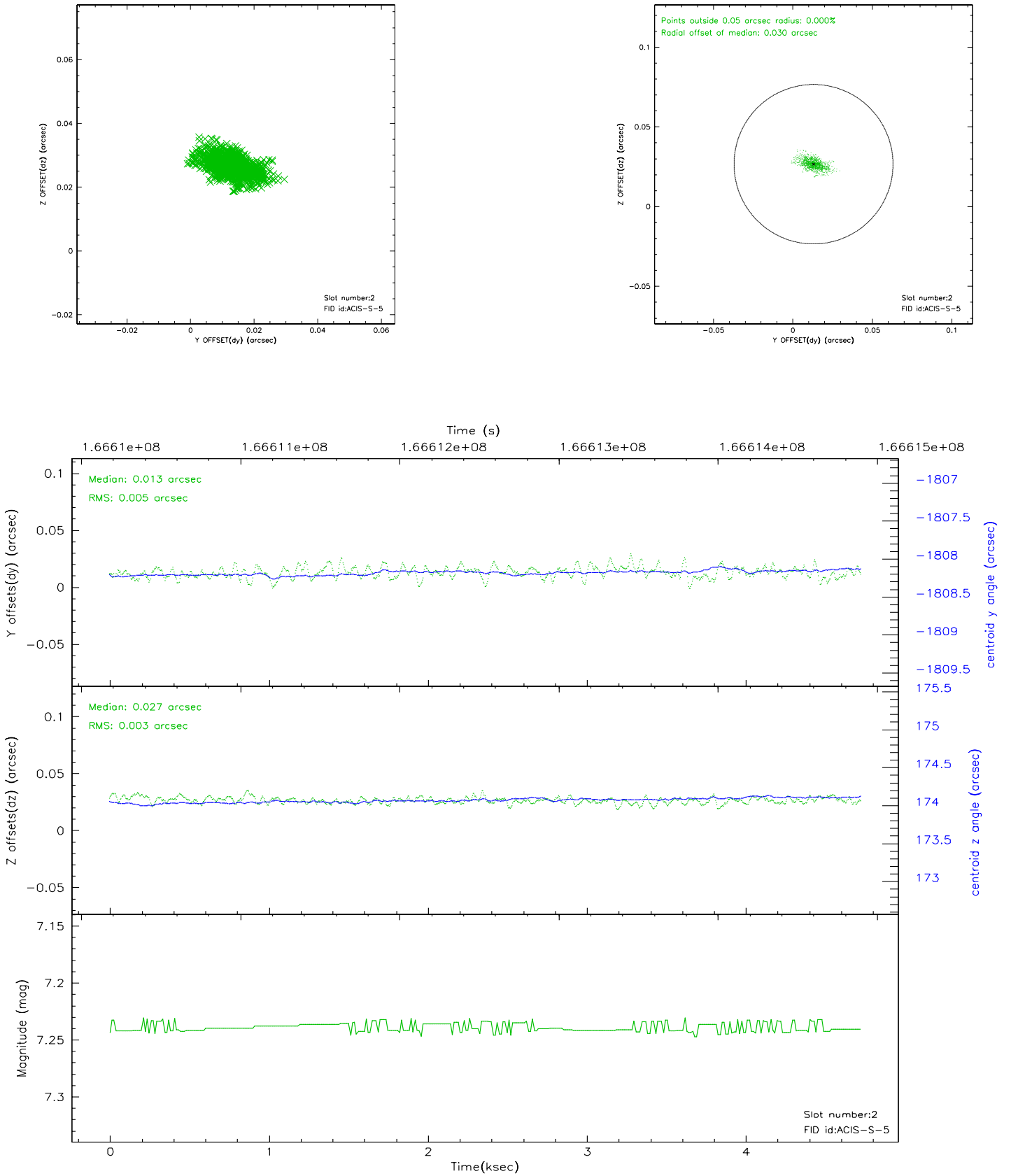
2.5.1 Slot 0



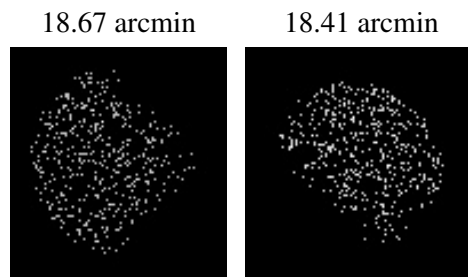
2.5.2 Slot 1



2.5.3 Slot 2



3 Point Sources



A Summary

A.1 Status

V&V Scientist	Beth Sundheim
V&V Date (YYYY-MM-DD)	2006.08.04
V&V Edition	1
V&V Disposition and Status	OK
V&V Charge Time	4.259

A.2 Comments