

# V&V Reference Report

## L2 ASCDS Version : 7.6.8

Observation 4036 - L2 Version 001  
Chandra X-Ray Center

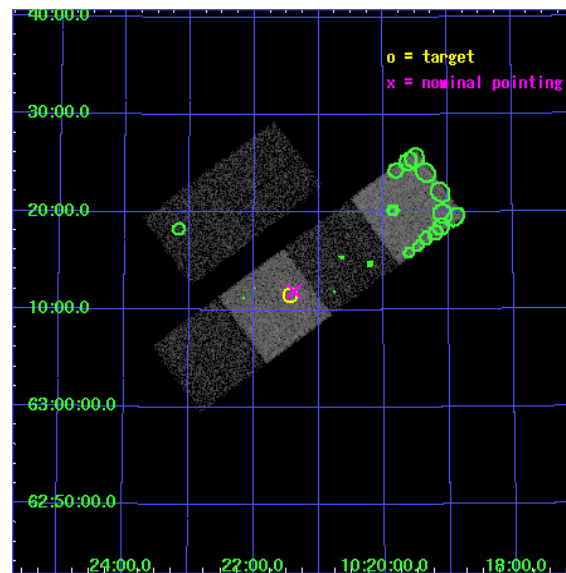
L2 Processing Date : Jul 19 2006

## Contents

<b>1</b>	<b>Front</b>	<b>2</b>
<b>2</b>	<b>OBI</b>	<b>3</b>
2.1	OBI . . . . .	3
2.1.1	Images . . . . .	3
2.1.2	Bias . . . . .	3
2.1.3	Parameters . . . . .	4
2.1.4	Events . . . . .	4
2.2	Compared Parameters . . . . .	5
2.3	Aspect . . . . .	6
2.4	Star Slots . . . . .	9
2.4.1	Slot 3 . . . . .	9
2.4.2	Slot 4 . . . . .	10
2.4.3	Slot 5 . . . . .	11
2.4.4	Slot 6 . . . . .	12
2.4.5	Slot 7 . . . . .	13
2.5	FID Slots . . . . .	14
2.5.1	Slot 0 . . . . .	14
2.5.2	Slot 1 . . . . .	15
2.5.3	Slot 2 . . . . .	16
<b>3</b>	<b>Point Sources</b>	<b>17</b>
<b>A</b>	<b>Summary</b>	<b>18</b>
A.1	Status . . . . .	18
A.2	Comments . . . . .	18

# 1 Front

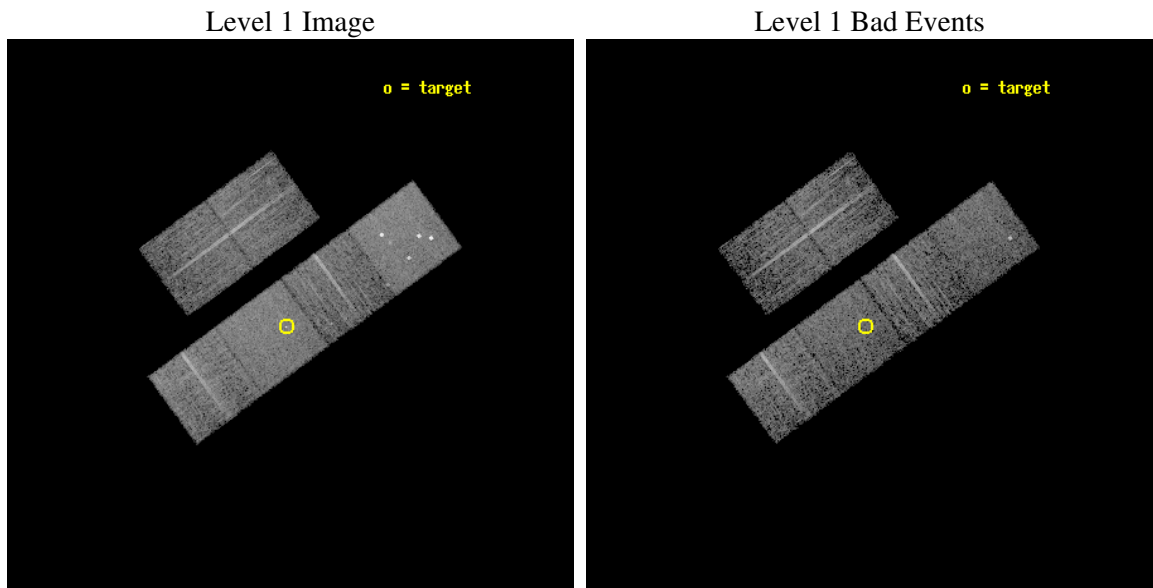
seq_num	700715
obs_id	4036
title	WHY DO WE SEE BROAD LINES IN X-RAY ABSORBED AGN?
observer	Dr. BELINDA WILKES
object	2MASS102127+631130
dtcycle	0
cycle	P
ra_targ	155.36125
dec_targ	63.191722
ra_nom	155.34647995639
dec_nom	63.198635439299
roll_nom	143.76040214604
revision	3
ontime	6259.1999766827
livetime	6179.9422177402
ontime2	6259.1999766827
ontime3	6259.1999766827
ontime5	6259.1999766827
ontime6	6259.1999766827
ontime7	6259.1999766827
ontime8	6259.1999766827
l2events	57974



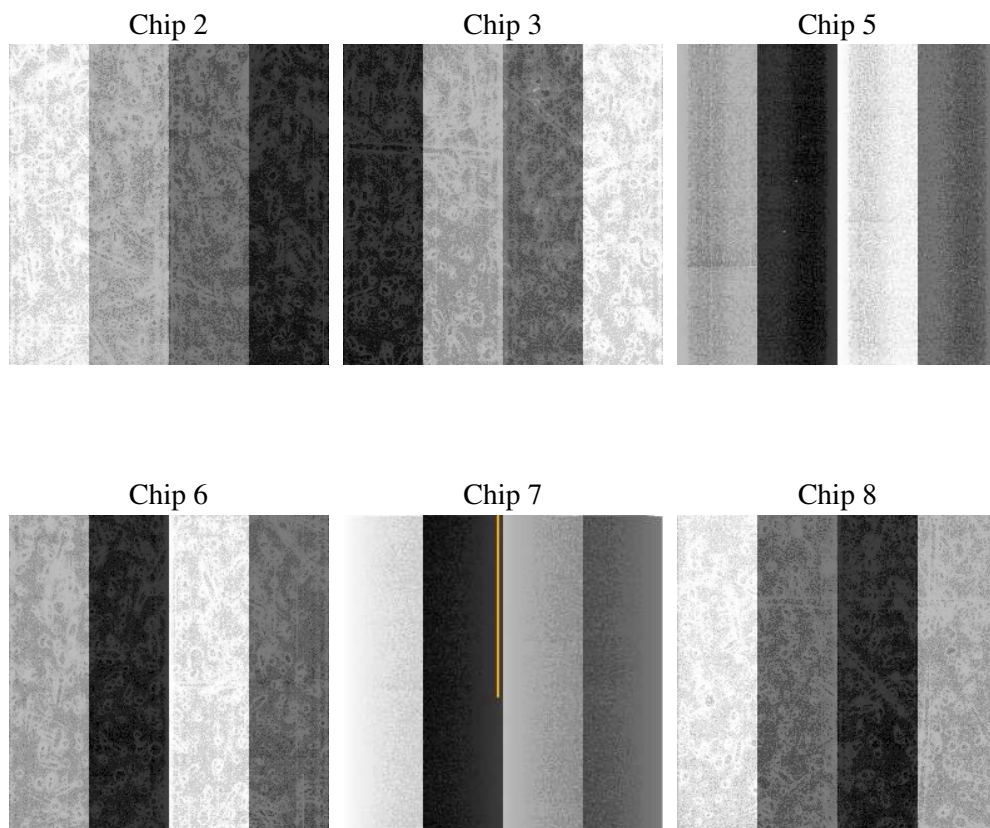
## 2 OBI

### 2.1 OBI

#### 2.1.1 Images



#### 2.1.2 Bias



### 2.1.3 Parameters

obi_num	0
ascdsver	7.6.8
caldbver	3.2.2
date	2006-07-19T10:15:48
revision	3

sched_exp_time	6300.000000
ontime	6264.8698627353
ontime2	6264.8698627353
ontime3	6268.1108629107
ontime5	6268.1108828485
ontime6	6268.1108629107
ontime7	6264.8698627353
ontime8	6268.1108629107
l1events	274350

### 2.1.4 Events

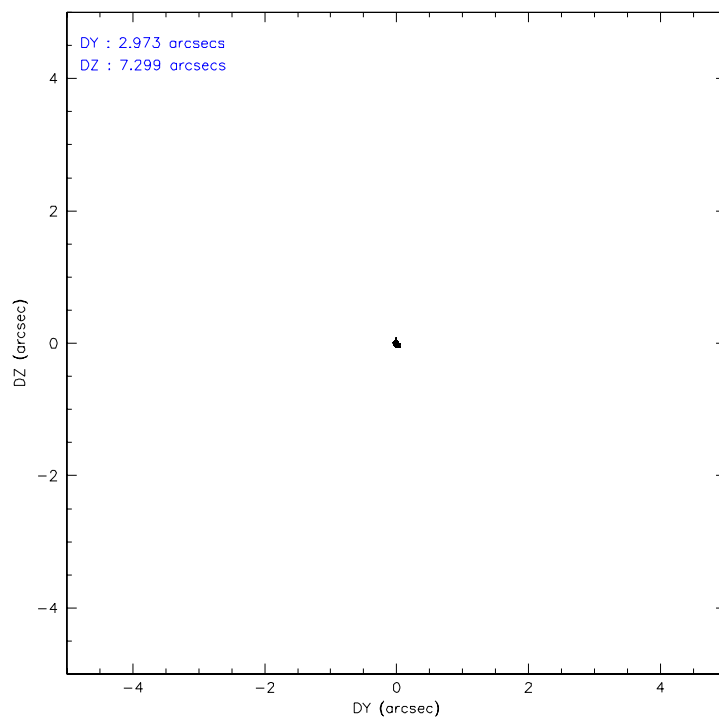
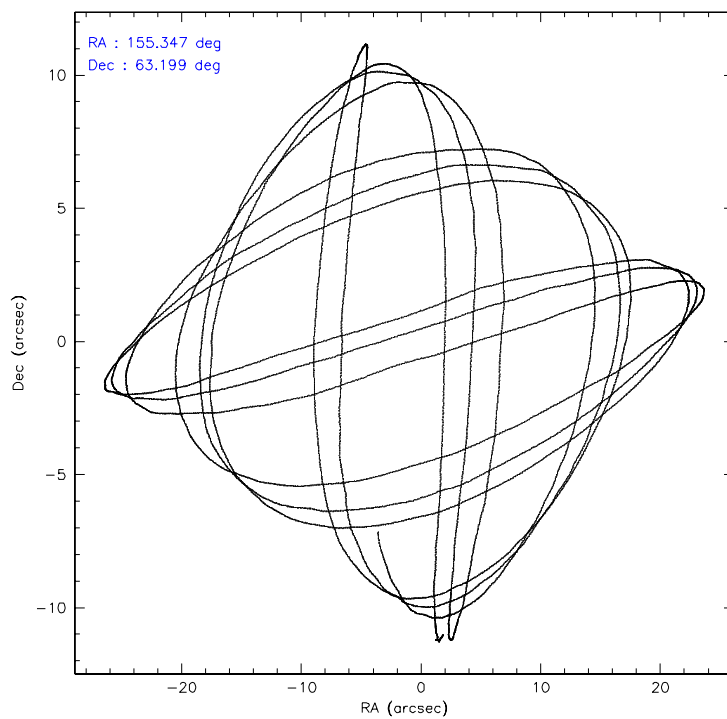
	ccd 2	ccd 3	ccd 5	ccd 6	ccd 7	ccd 8
level 1 events	40338	35423	60489	38656	50979	48465
rejected events	35968	31142	31383	34055	31316	38881
rejected %	89%	87%	51%	88%	61%	80%

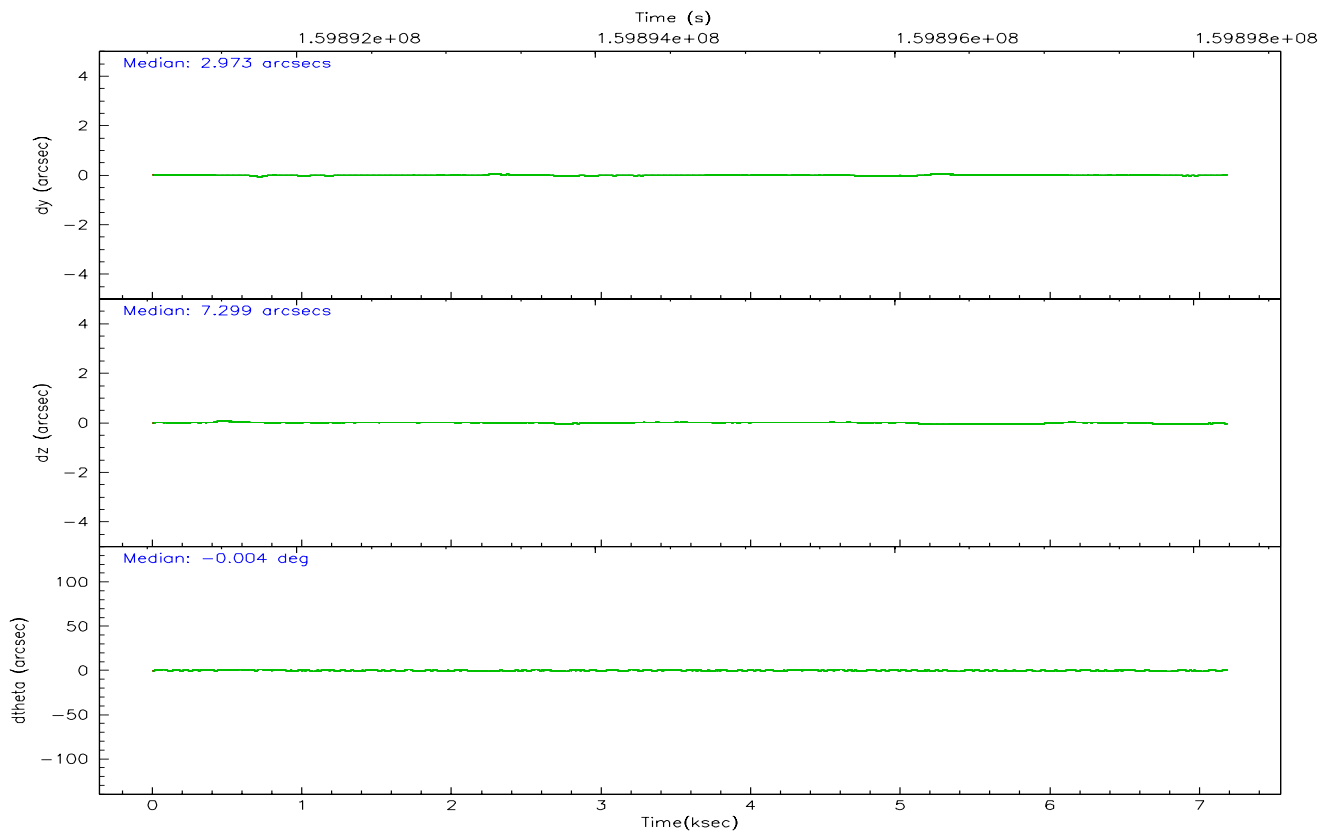
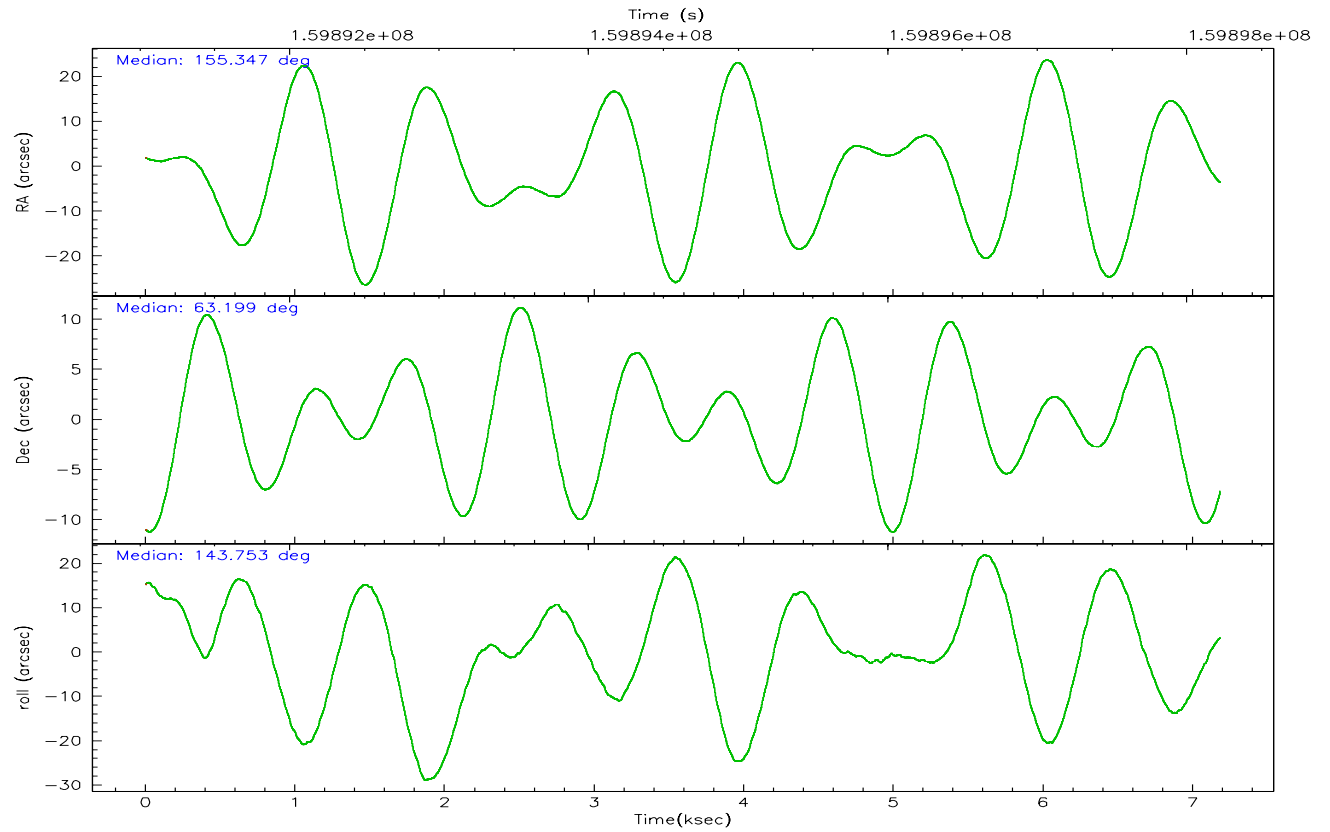
	ccd 2	ccd 3	ccd 5	ccd 6	ccd 7	ccd 8
grade 0 events	1857	1866	6198	1833	1241	2936
	4%	5%	10%	4%	2%	6%
grade 1 events	15	21	493	8	23	33
	0%	0%	0%	0%	0%	0%
grade 2 events	878	817	7794	944	4866	2121
	2%	2%	12%	2%	9%	4%
grade 3 events	464	411	573	448	997	977
	1%	1%	0%	1%	1%	2%
grade 4 events	454	440	535	417	1025	906
	1%	1%	0%	1%	2%	1%
grade 5 events	1465	1536	2567	1625	3271	2186
	3%	4%	4%	4%	6%	4%
grade 6 events	720	752	14035	961	11546	2659
	1%	2%	23%	2%	22%	5%
grade 7 events	34485	29580	28294	32420	28010	36647
	85%	83%	46%	83%	54%	75%

## 2.2 Compared Parameters

Parameter	Planned	Actual	Parameter	Planned	Actual
Instrument	ACIS	ACIS	Obspar format version number	6	6
Detector	ACIS-235678	ACIS-235678	Obspar file type	PREDICTED	ACTUAL
Grating	NONE	NONE	Obspar update status	NONE	UPDATED
Data mode	FAINT	FAINT	On-chip summing requested	N	N
Observation mode	POINTING	POINTING	Subarray requested	NONE	NONE
Pointing RA	155.406554	155.3464799563852	Alternating exposures requested	N	N
Pointing Dec	63.196124	63.19863543929949	Primary exposure time	0.000000	3.2
Pointing Roll	143.550154	143.7604021460397			
SIM focus pos (mm)	-0.684267	-0.6828225247311905			
SIM defocus (mm)	0	0.001444936568705701			
SIM translation stage pos (mm)	-190.132523	-190.1400660498719			
SIM translation stage offset (mm)	0	0.00754346686406393			
Observation start time	159891927.184000	159890619.45615			
Observation start date	2003-01-25T14:24:23	2003-01-25T14:03:39			
Observation end time	159898227.184000	159898524.76899			
Observation end date	2003-01-25T16:09:23	2003-01-25T16:15:24			
Read mode	TIMED	TIMED			

## 2.3 Aspect





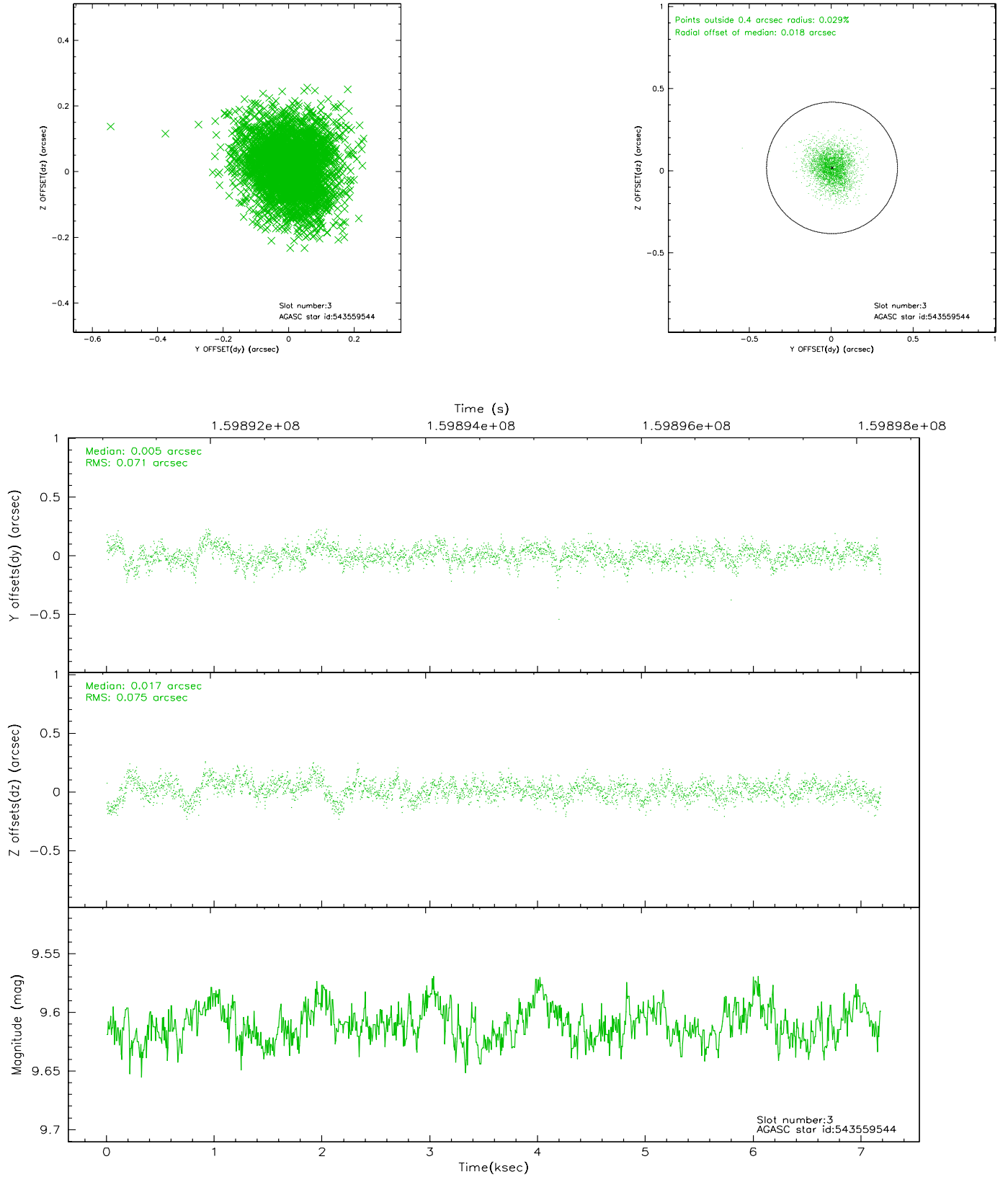
### Slot Statistics

slot	status	id	mag	n_pts	med_dy	med_dz	dr1	dr2	ra	dec	mean_y	mean_z
0	FID	ACIS-S-2	7.12	1752	-0.011	0.013	0.007	0.011	0.000000	0.000000	-755.62	-1728.46
1	FID	ACIS-S-4	7.20	1752	-0.033	0.002	0.005	0.009	0.000000	0.000000	2157.27	179.19
2	FID	ACIS-S-5	7.24	1752	0.013	-0.006	0.006	0.010	0.000000	0.000000	-1807.41	173.76
3	GUIDE	543559544	9.61	3501	0.005	0.017	0.108	0.184	155.488993	63.856379	1307.66	-1989.49
4	GUIDE	543562104	9.02	3502	-0.136	0.051	0.097	0.163	155.237007	63.724275	1347.92	-1369.55
5	GUIDE	543562752	9.60	3502	-0.056	-0.046	0.142	0.223	154.845994	62.819863	-60.49	1633.50
6	GUIDE	543563600	9.80	3498	0.043	-0.092	0.177	0.268	156.186685	62.673608	-2149.73	741.02
7	GUIDE	542641792	10.48	3496	0.143	0.089	0.185	0.417	153.457398	63.002446	2175.92	2414.82

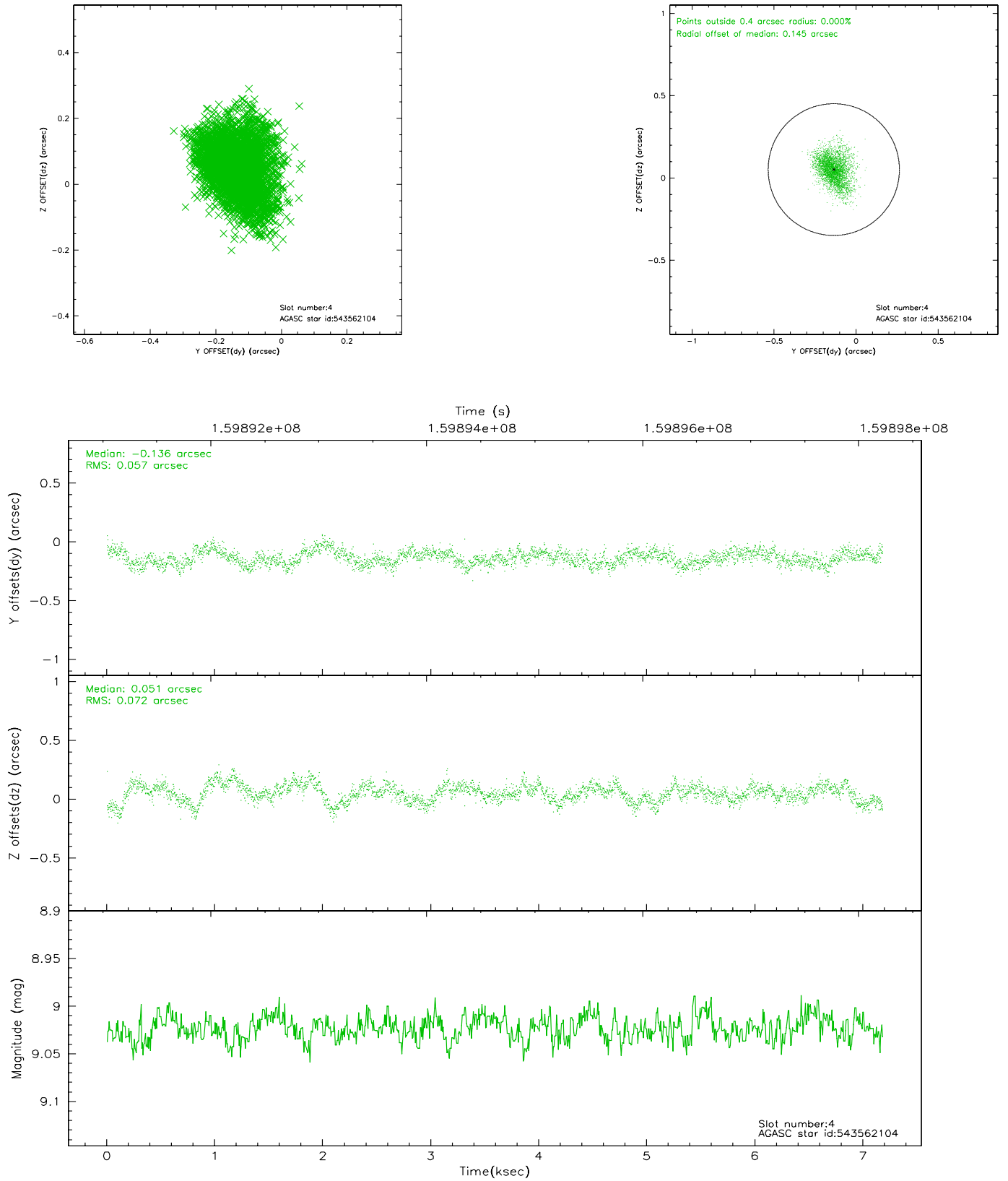


## 2.4 Star Slots

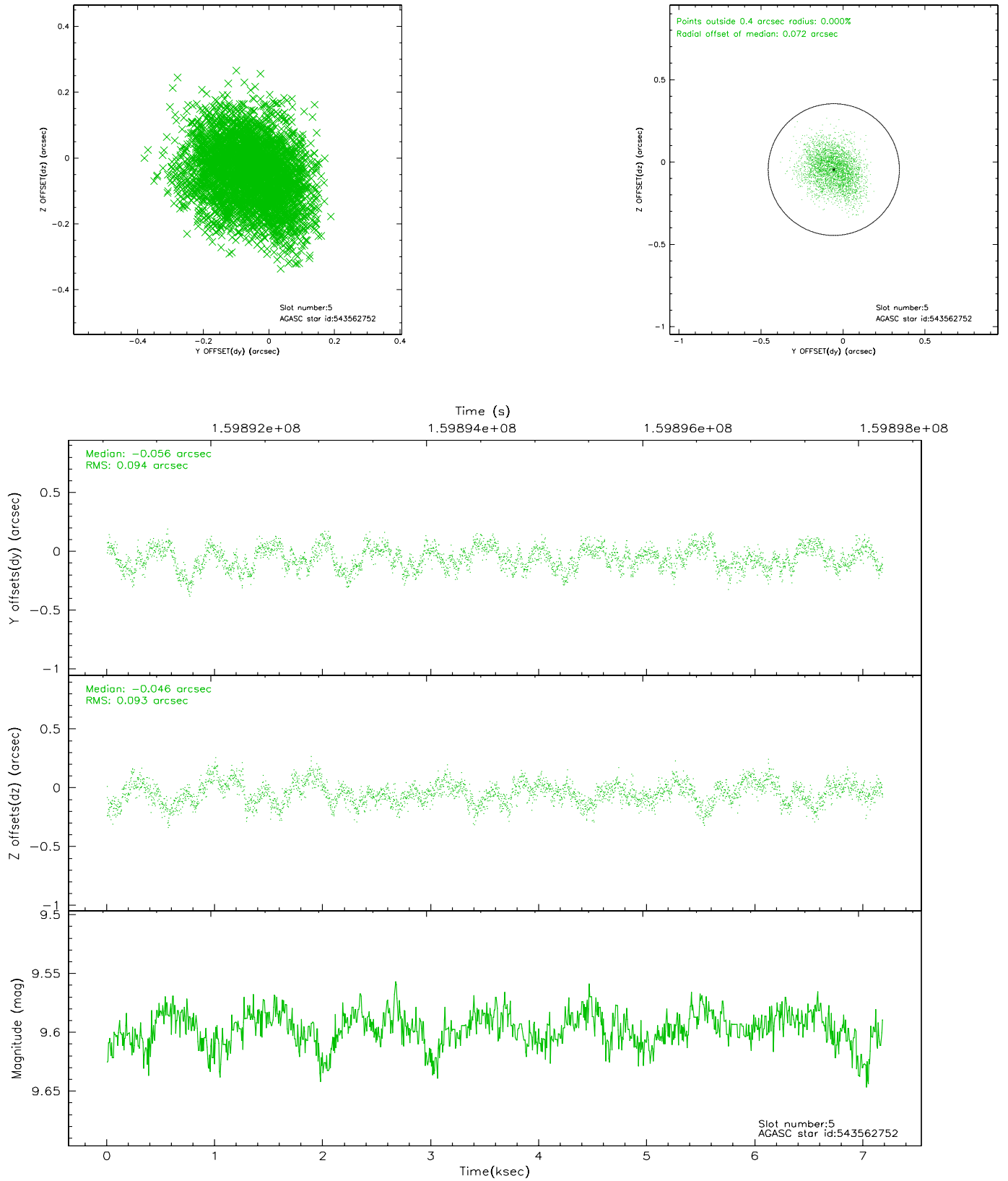
### 2.4.1 Slot 3



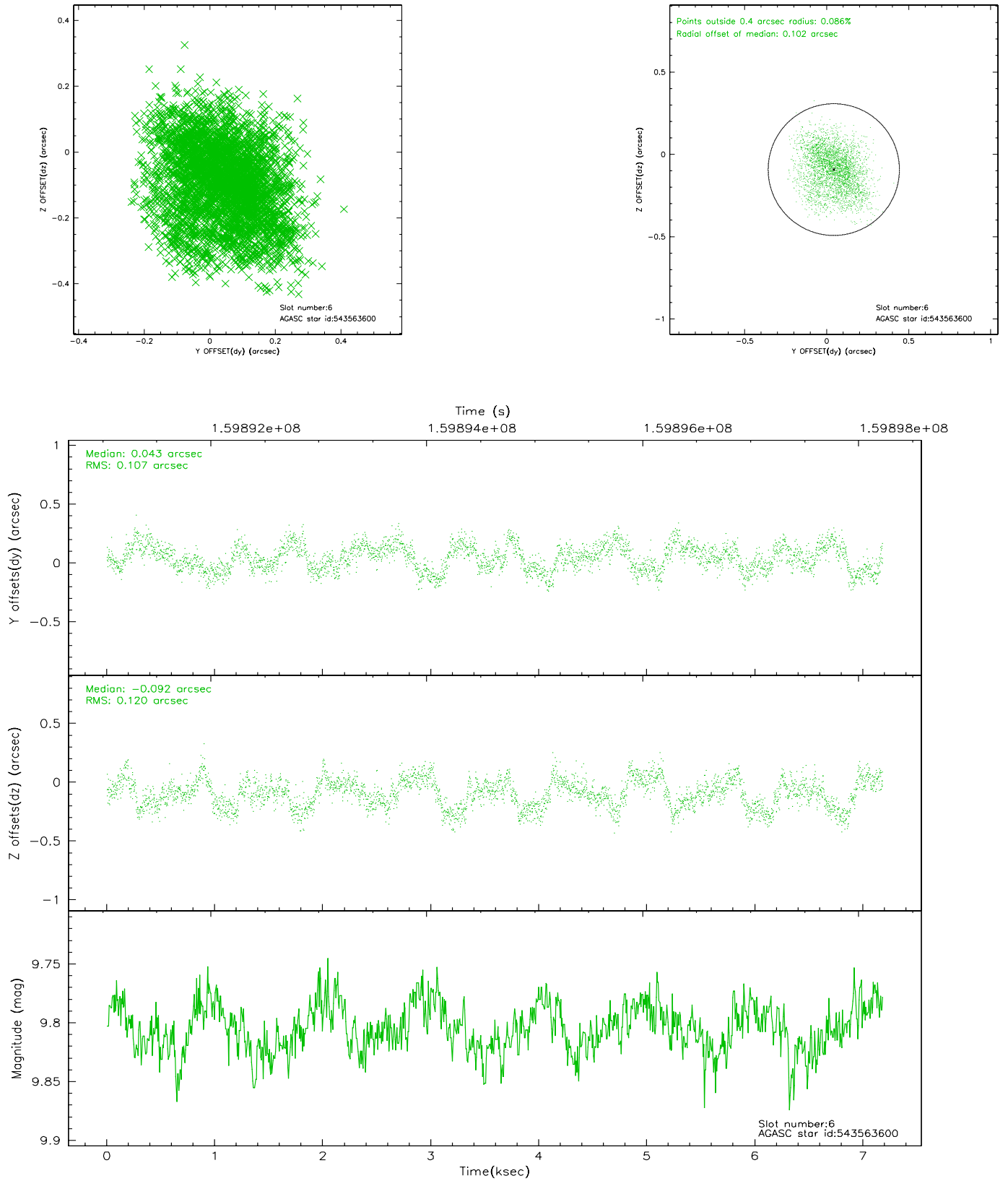
## 2.4.2 Slot 4



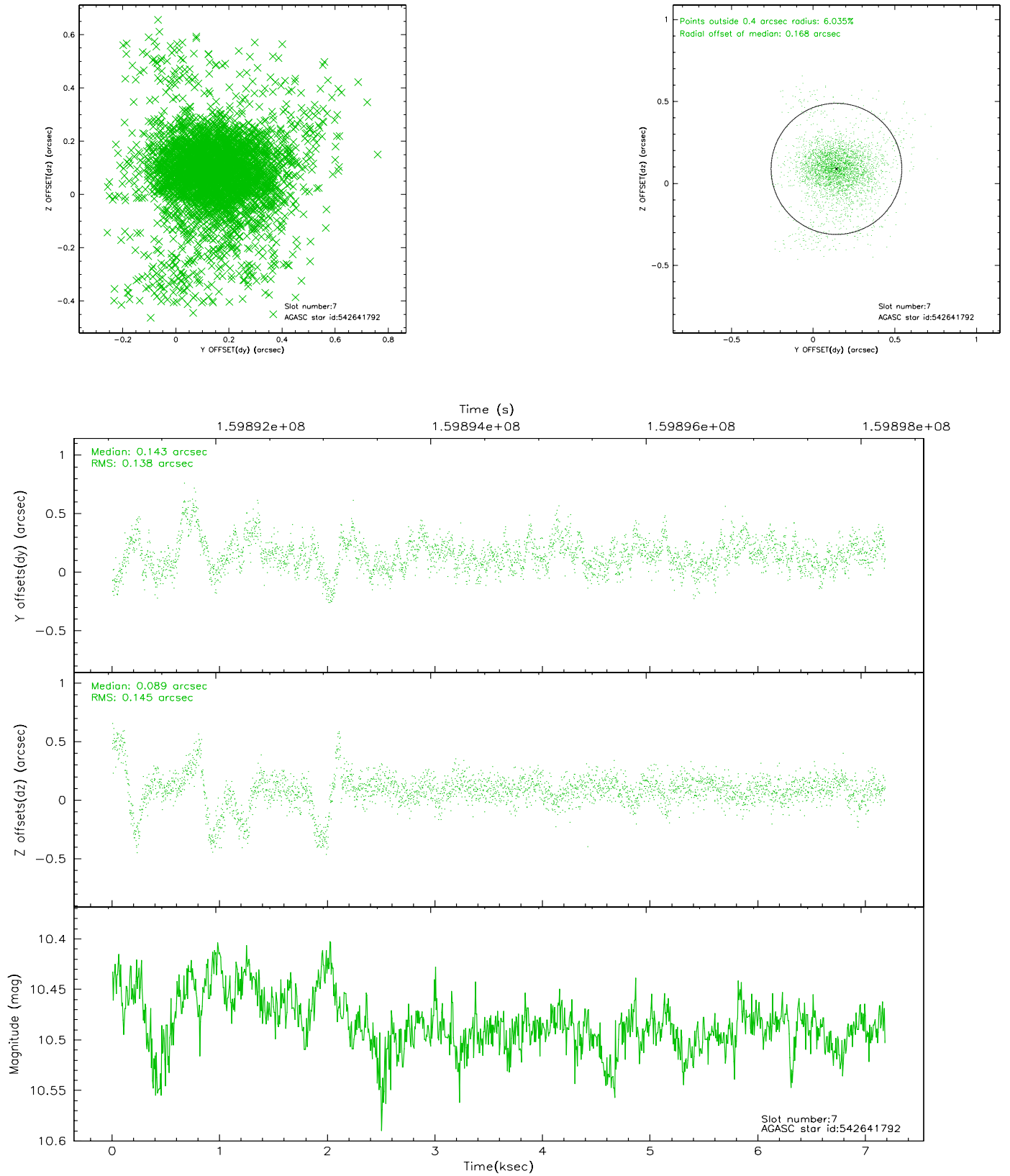
### 2.4.3 Slot 5



## 2.4.4 Slot 6

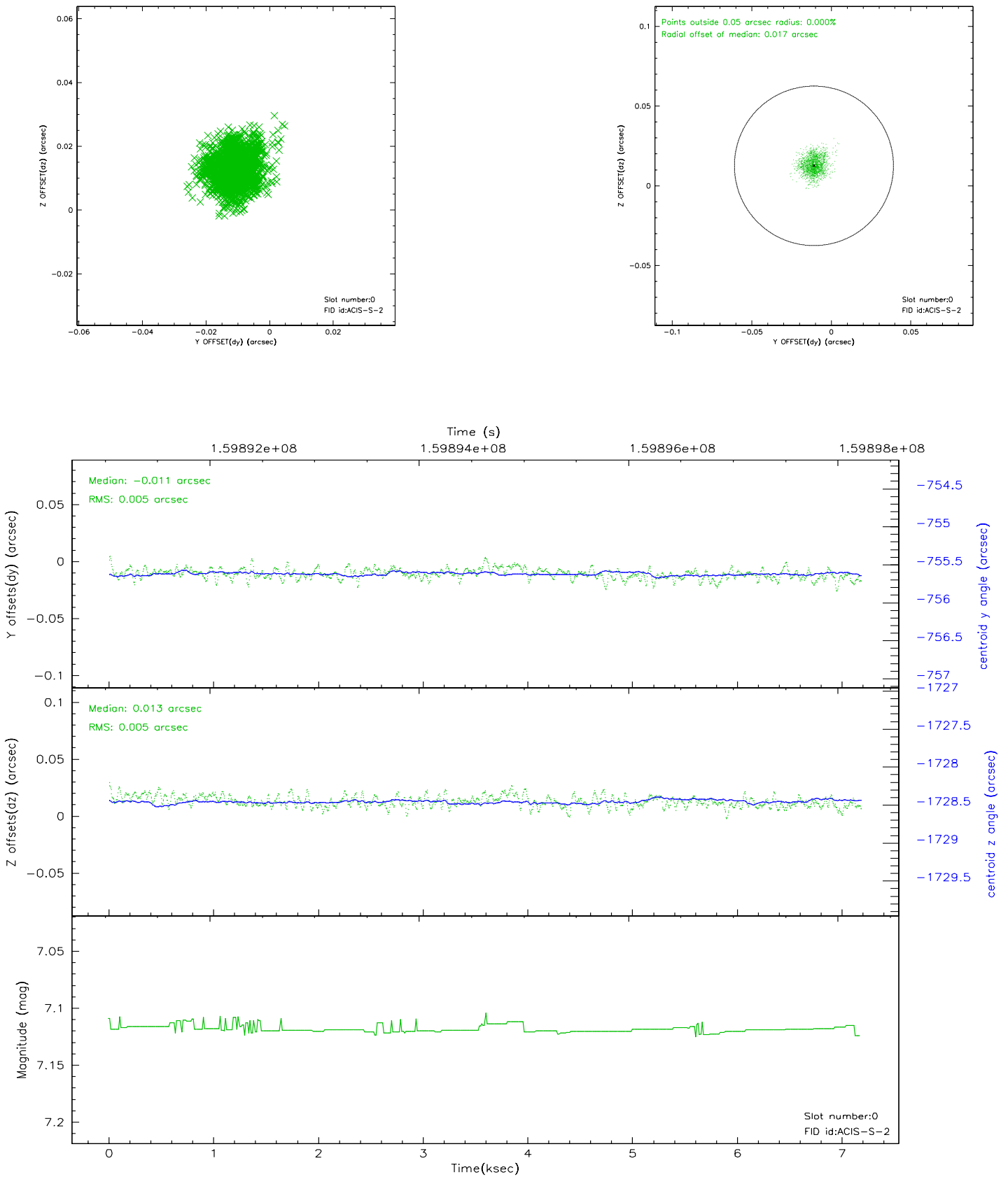


## 2.4.5 Slot 7

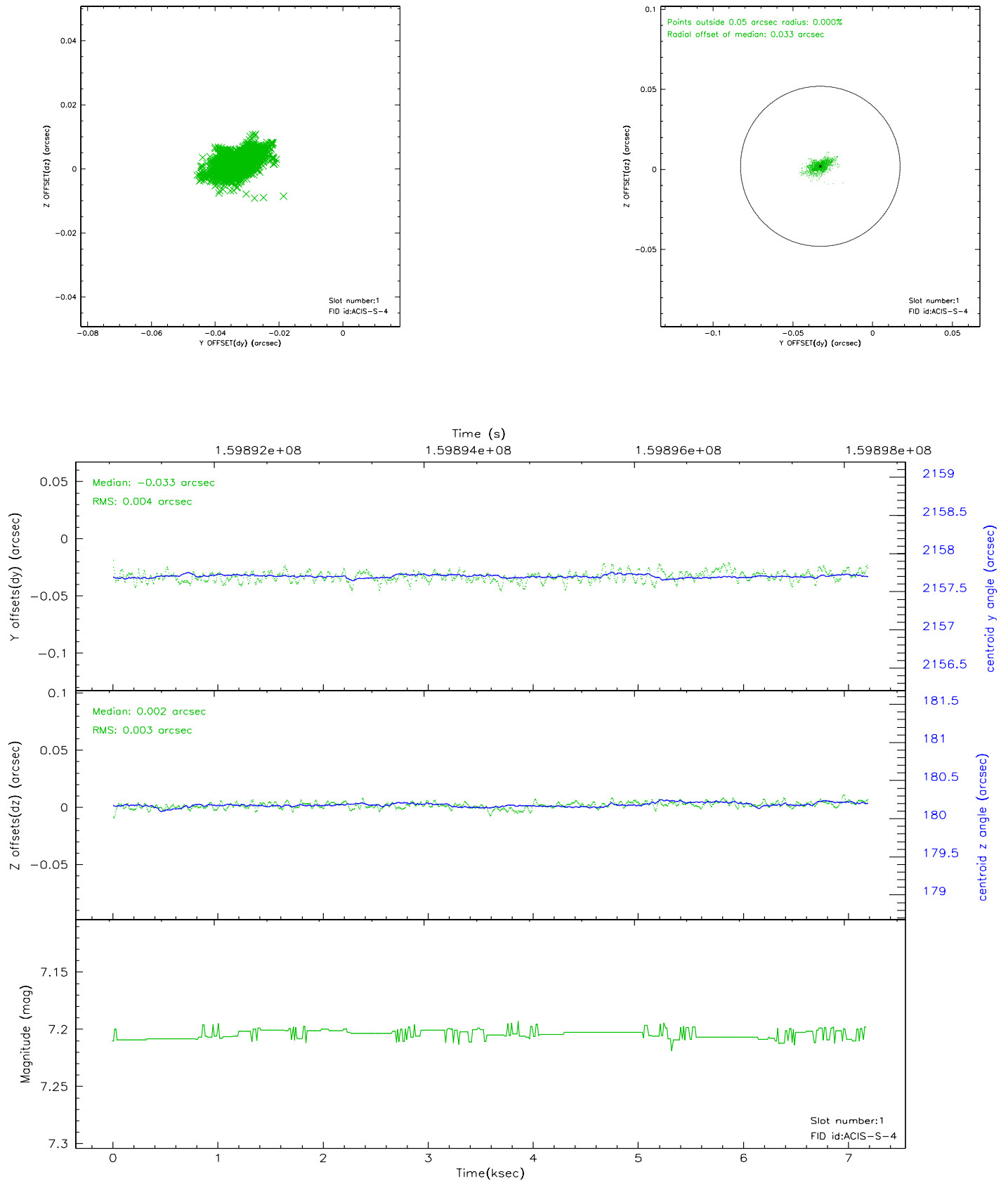


## 2.5 FID Slots

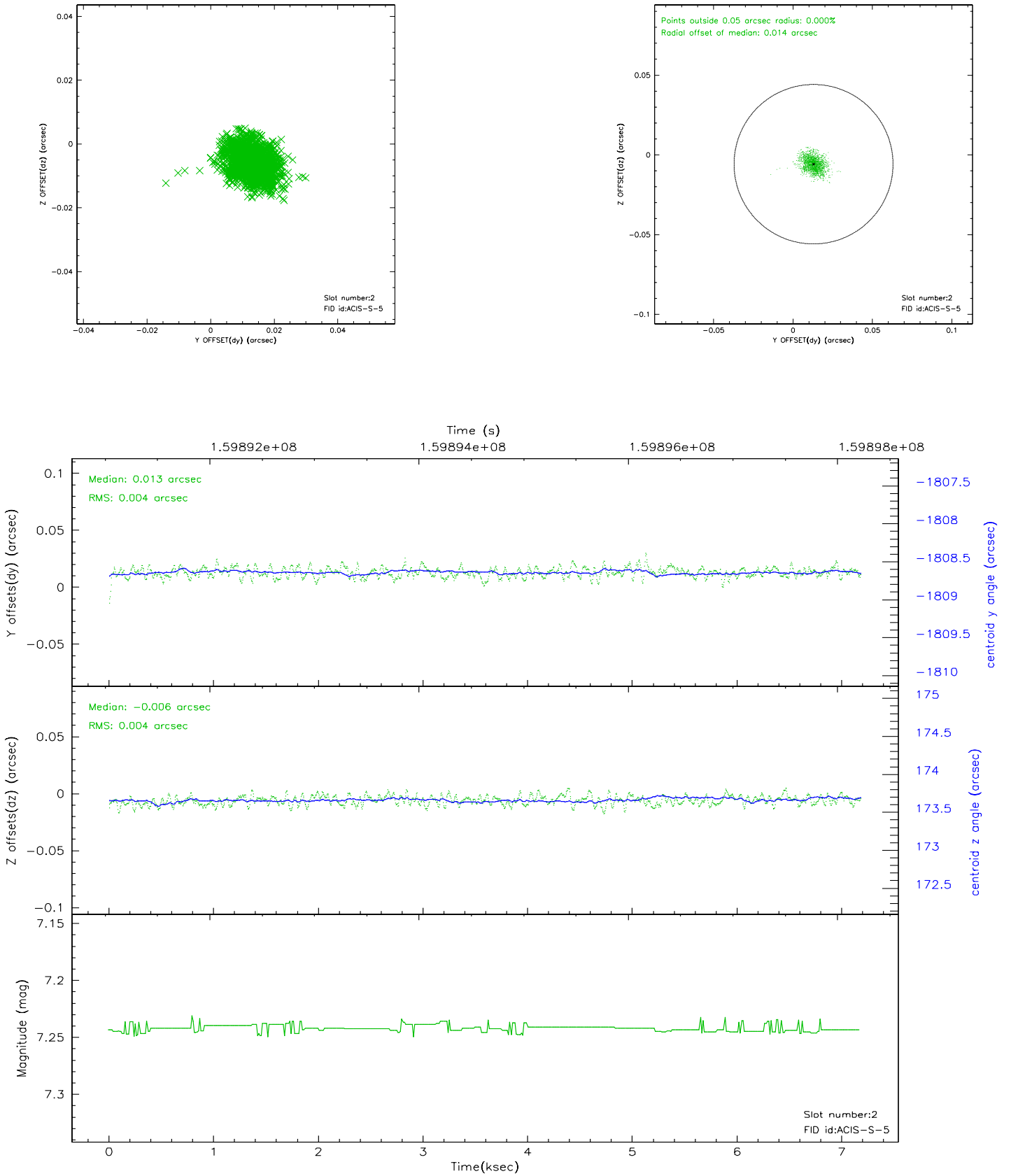
### 2.5.1 Slot 0



## 2.5.2 Slot 1

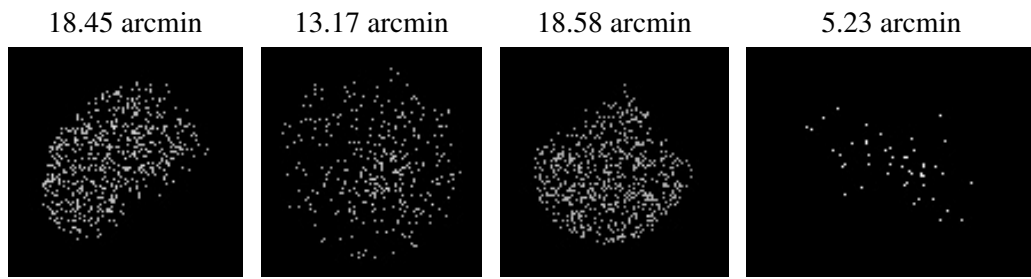


### 2.5.3 Slot 2





### 3 Point Sources



# A Summary

## A.1 Status

V&V Scientist	Jen Lauer
V&V Date (YYYY-MM-DD)	2006.07.19
V&V Edition	1
V&V Disposition and Status	OK
V&V Charge Time	6.259

## A.2 Comments

The ACIS focal plane temperature was above calibration limits for the entire observation.

The ACIS spectral response calibration is less accurate at these warmer temperatures than it is at -119.7 C. Users whose science objectives depend on the most accurate spectral response (ie: fitting line-rich spectra) may notice an effect. Users whose science objectives do not depend on the most accurate spectral response should not notice an effect.