

V&V Reference Report

L2 ASCDS Version : 7.6.9

Observation 4026 - L2 Version 001
Chandra X-Ray Center

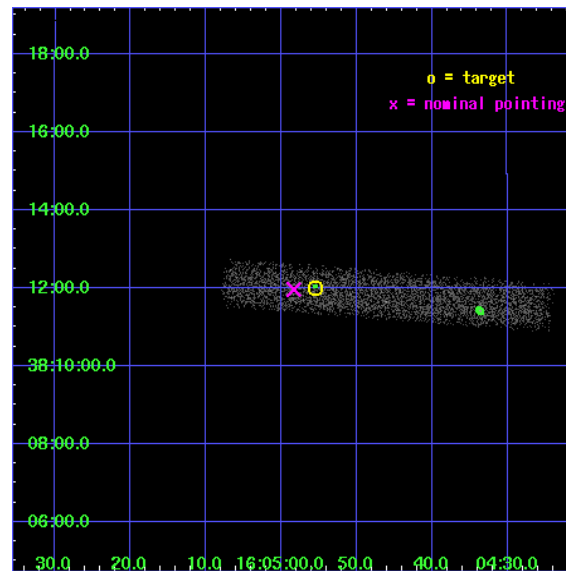
L2 Processing Date : Oct 13 2006

Contents

1	Front	2
2	OBI	3
2.1	OBI	3
2.1.1	Images	3
2.1.2	Bias	3
2.1.3	Parameters	4
2.1.4	Events	4
2.2	Compared Parameters	5
2.3	Aspect	6
2.4	Star Slots	9
2.4.1	Slot 3	9
2.4.2	Slot 4	10
2.4.3	Slot 5	11
2.4.4	Slot 6	12
2.4.5	Slot 7	13
2.5	FID Slots	14
2.5.1	Slot 0	14
2.5.2	Slot 1	15
2.5.3	Slot 2	16
3	Point Sources	17
A	Summary	18
A.1	Status	18
A.2	Comments	18

1 Front

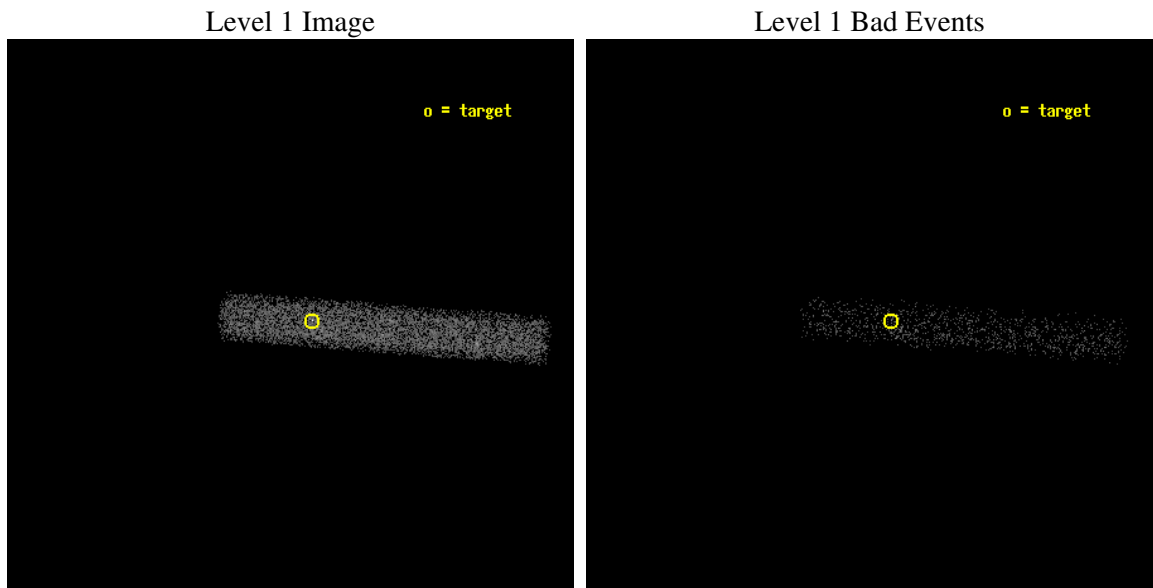
seq_num	700705
obs_id	4026
title	CHANDRA OBSERVATION OF HS 1603+3820 - A BRIGHT, HIGH REDSHIFT QUASAR WITH VERY RICH ASSOCIATED ABSORPTION
observer	DR. ADAM DOBRZYCKI
object	HS 1603+3820
dtcycle	0
cycle	P
ra_targ	241.230833
dec_targ	38.200389
ra_nom	241.24308193456
dec_nom	38.199409983075
roll_nom	4.3234896467993
revision	2
ontime	9146.400136292
livetime	8295.3021370325
ontime7	9146.400136292
l2events	5674



2 OBI

2.1 OBI

2.1.1 Images



2.1.2 Bias

Chip 7



2.1.3 Parameters

obi_num	1
ascdsver	7.6.9
caldbver	3.2.3
date	2006-10-13T12:59:07
revision	2

sched_exp_time	9000.000000
ontime	9918.4284528792
ontime7	9918.4284528792
l1events	13389

2.1.4 Events

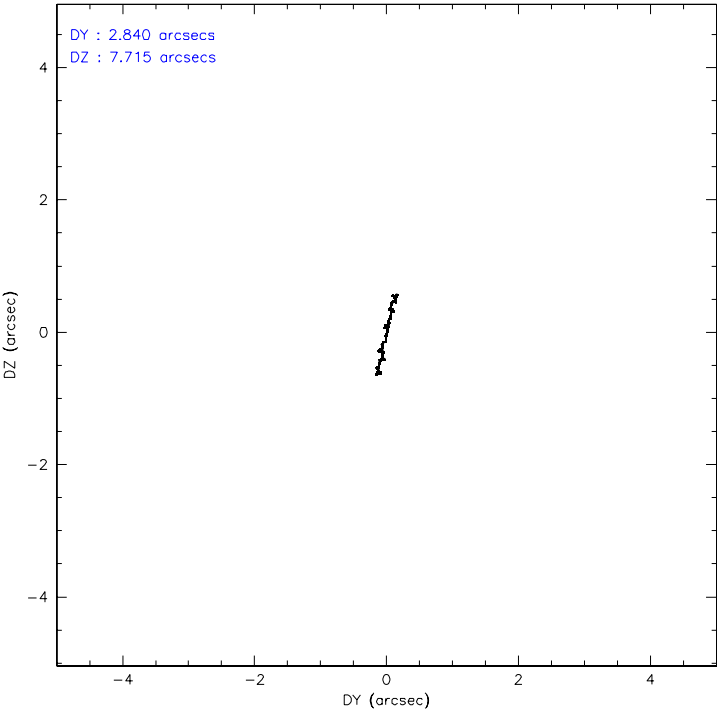
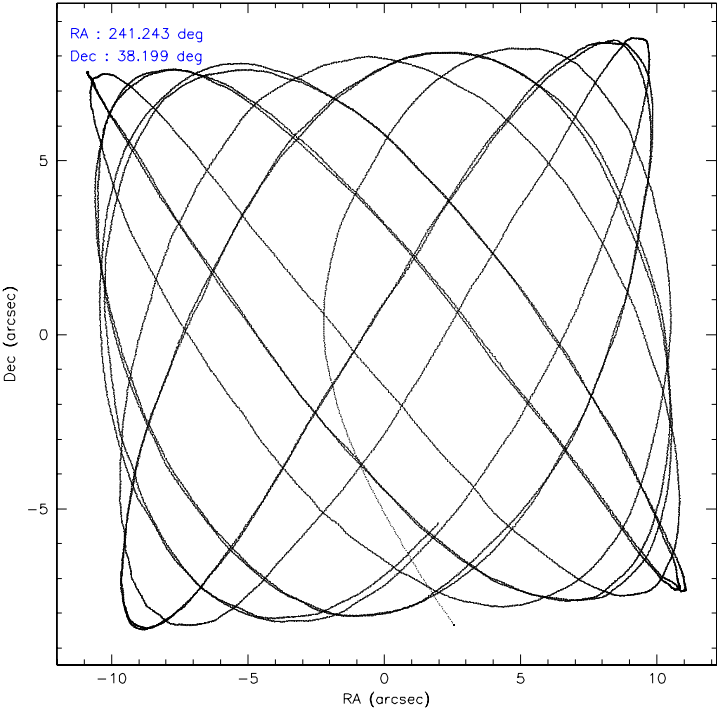
	ccd 7
level 1 events	13389
rejected events	7577
rejected %	56%

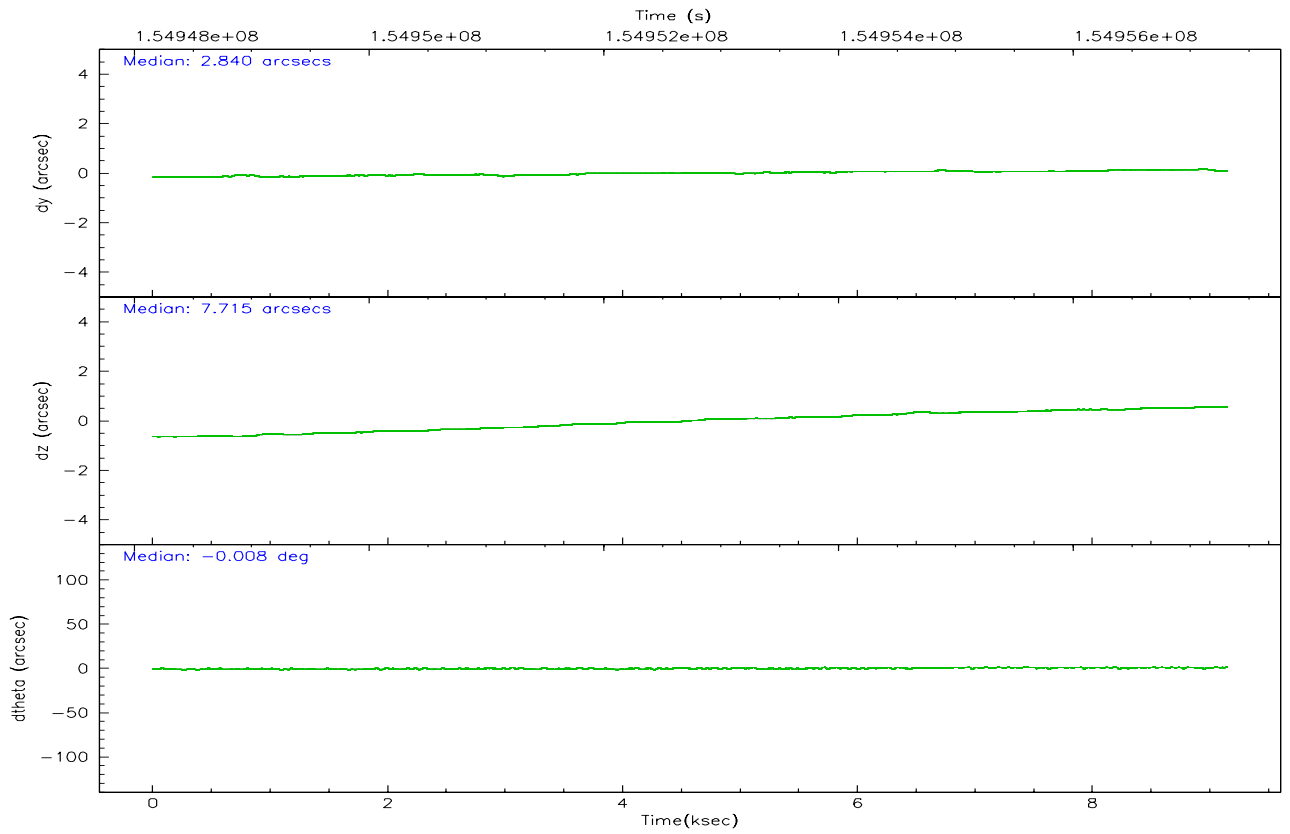
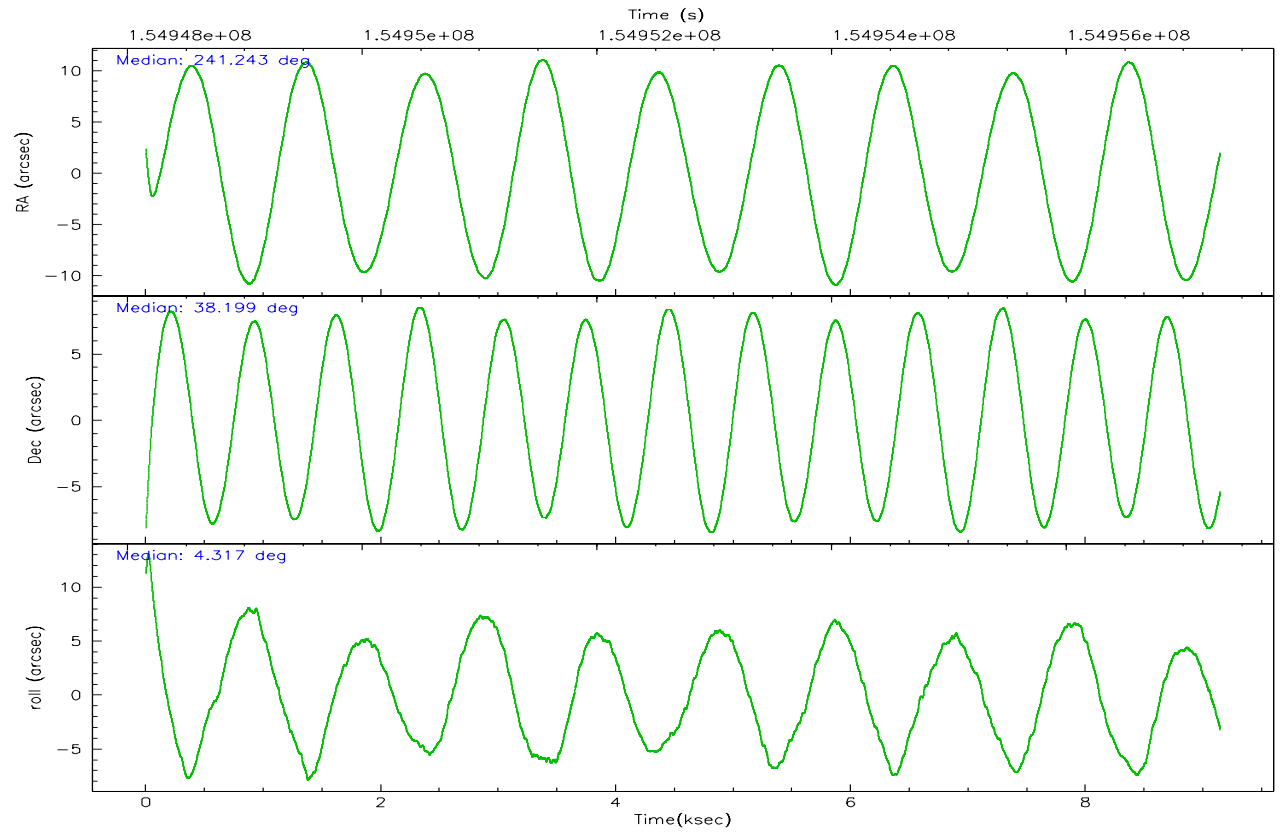
	ccd 7
grade 0 events	823
	6%
grade 1 events	12
	0%
grade 2 events	1400
	10%
grade 3 events	759
	5%
grade 4 events	723
	5%
grade 5 events	874
	6%
grade 6 events	3717
	27%
grade 7 events	5081
	37%

2.2 Compared Parameters

Parameter	Planned	Actual	Parameter	Planned	Actual
Instrument	ACIS	ACIS	Obspar format version number	6	6
Detector	ACIS-7	ACIS-7	Obspar file type	PREDICTED	ACTUAL
Grating	NONE	NONE	Obspar update status	NONE	UPDATED
Data mode	VFAINT	VFAINT	Number of optional ACIS chips dropped	0	0
Observation mode	POINTING	POINTING	On-chip summing requested	N	N
Pointing RA	241.214732	241.2430819345647	Subarray requested	CUSTOM	1/8
Pointing Dec	38.183758	38.19940998307545	Subarray start row	1	1
Pointing Roll	4.184381	4.323489646799313	Subarray row count	128	128
SIM focus pos (mm)	-0.684267	-0.6828225247311905	Alternating exposures requested	N	N
SIM defocus (mm)	0	0.001444936568705701	Primary exposure time	0.000000	0.4
SIM translation stage pos (mm)	-179.422523	-179.41902560402			
SIM translation stage offset (mm)	-10.71	-10.71349697898776			
Observation start time	154948309.184000	154947318.43713			
Observation start date	2002-11-29T09:10:45	2002-11-29T08:55:18			
Observation end time	154957309.184000	154958243.40008			
Observation end date	2002-11-29T11:40:45	2002-11-29T11:57:23			
Read mode	TIMED	TIMED			

2.3 Aspect



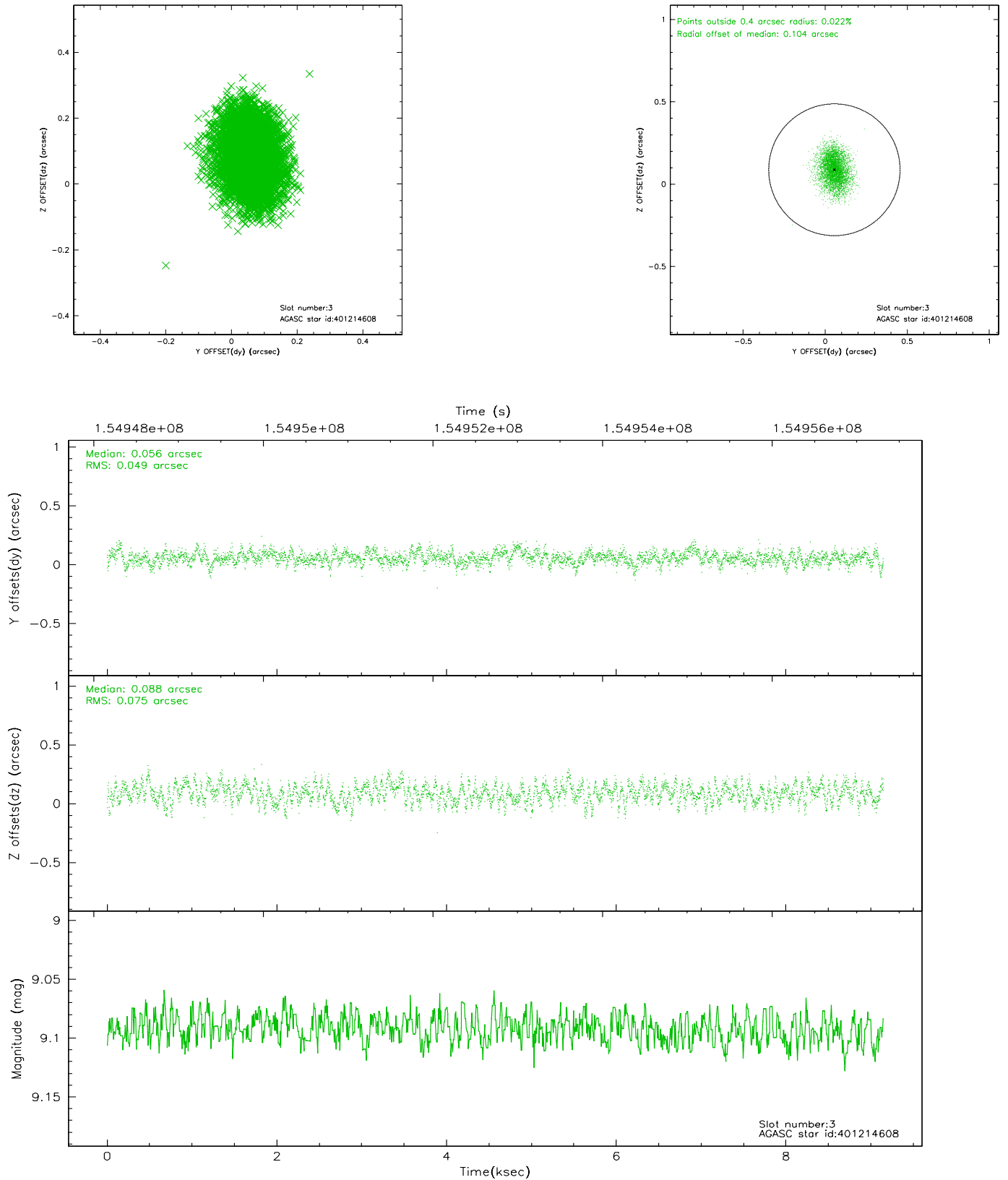


Slot Statistics

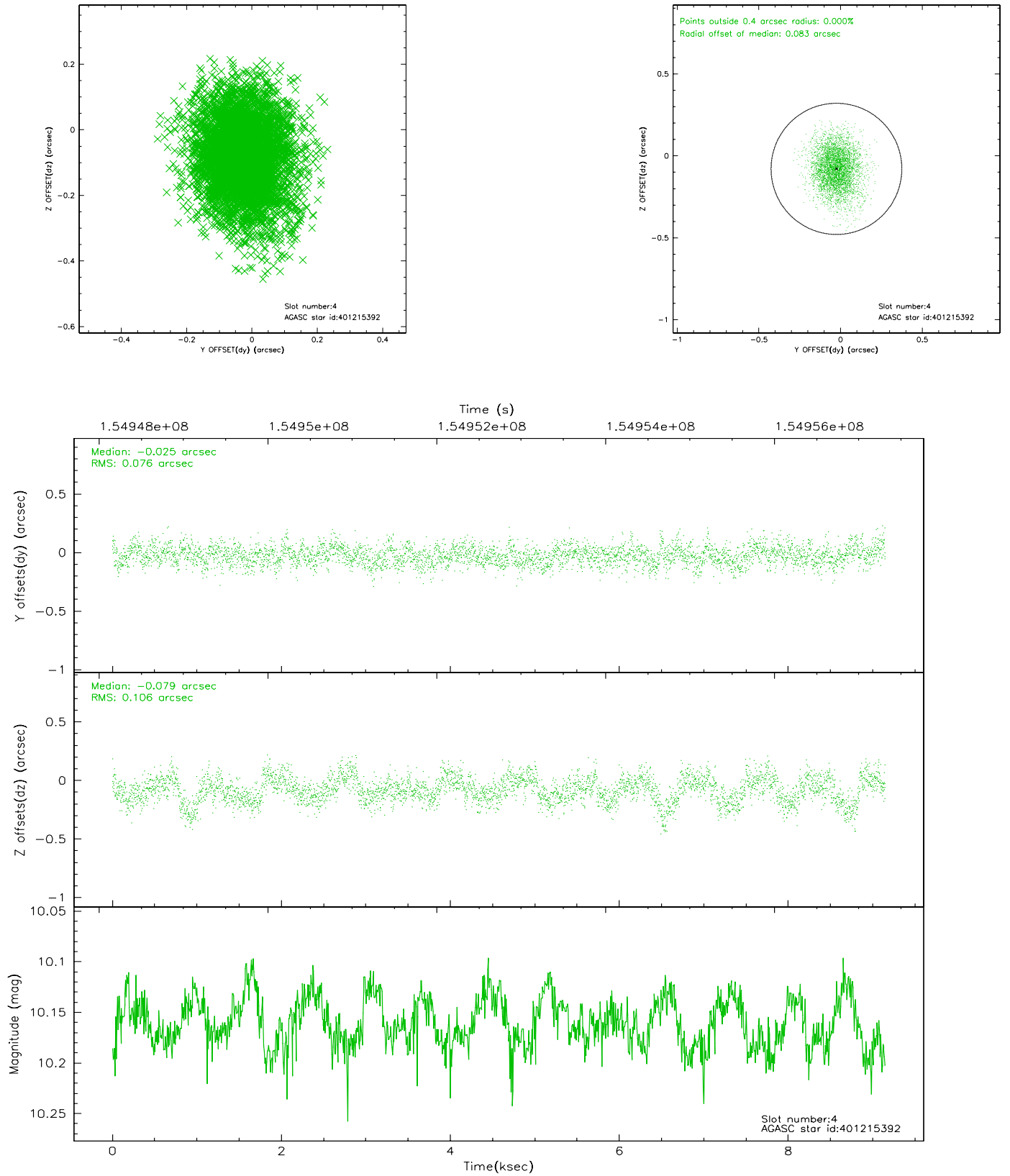
slot	status	id	mag	n_pts	med_dy	med_dz	dr1	dr2	ra	dec	mean_y	mean_z
0	FID	ACIS-S-1	7.18	2231	-0.018	0.247	0.019	0.027	0.000000	0.000000	941.42	-1944.79
1	FID	ACIS-S-2	7.09	2231	-0.103	-0.121	0.021	0.031	0.000000	0.000000	-754.23	-1950.50
2	FID	ACIS-S-6	7.43	2231	0.099	-0.121	0.013	0.019	0.000000	0.000000	406.82	595.43
3	GUIDE	401214608	9.09	4461	0.056	0.088	0.096	0.156	240.801987	37.525959	-1346.76	-2273.38
4	GUIDE	401215392	10.16	4455	-0.025	-0.079	0.137	0.231	241.541943	37.850738	841.01	-1262.53
5	GUIDE	401216840	9.33	4462	0.038	0.083	0.091	0.146	241.372039	37.812153	349.89	-1366.76
6	GUIDE	401225712	9.80	4461	0.074	0.038	0.107	0.179	241.910033	38.778349	2103.79	1999.63
7	GUIDE	401226328	8.22	4461	-0.139	-0.125	0.062	0.098	241.837349	38.829479	1912.57	2197.34

2.4 Star Slots

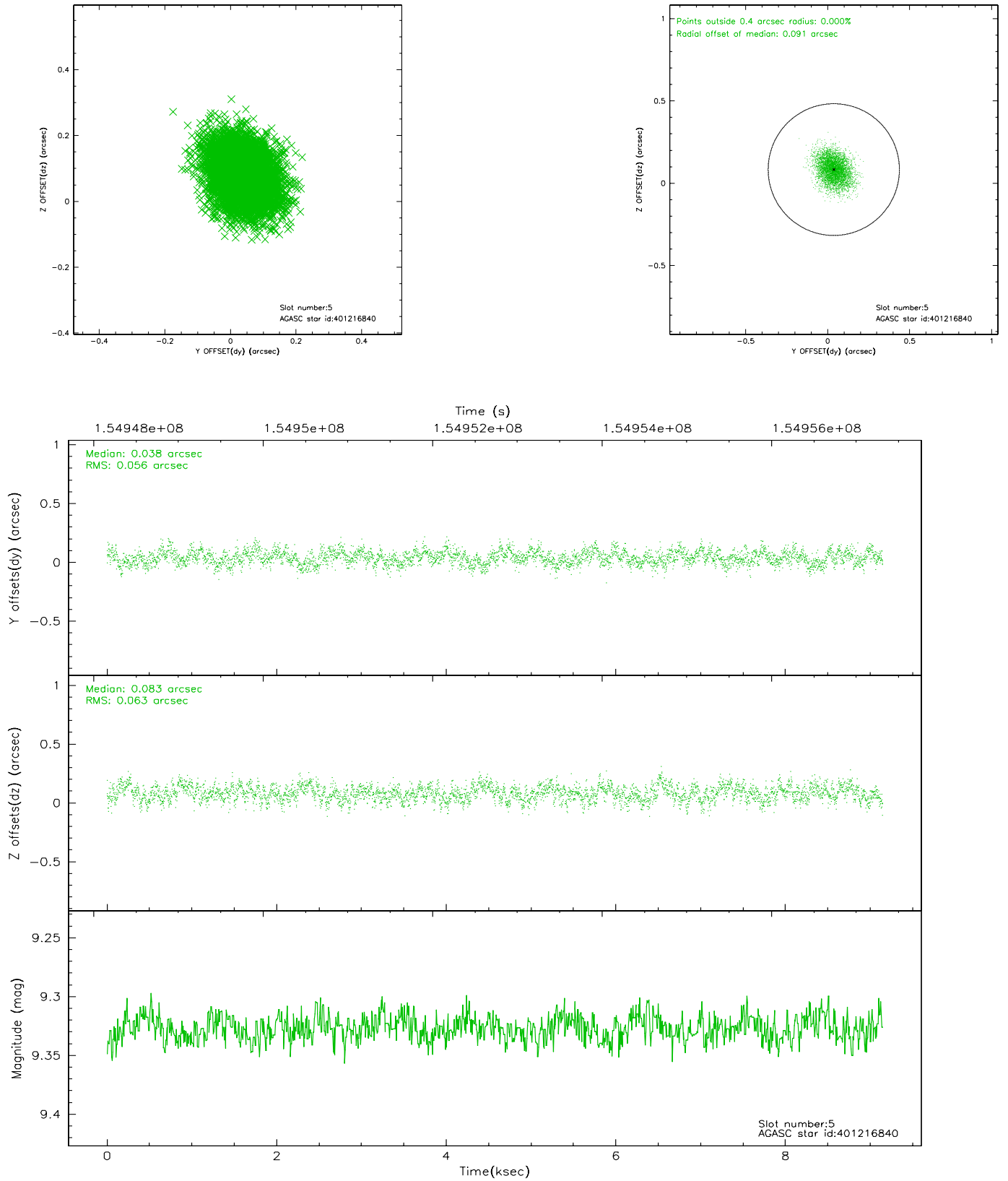
2.4.1 Slot 3



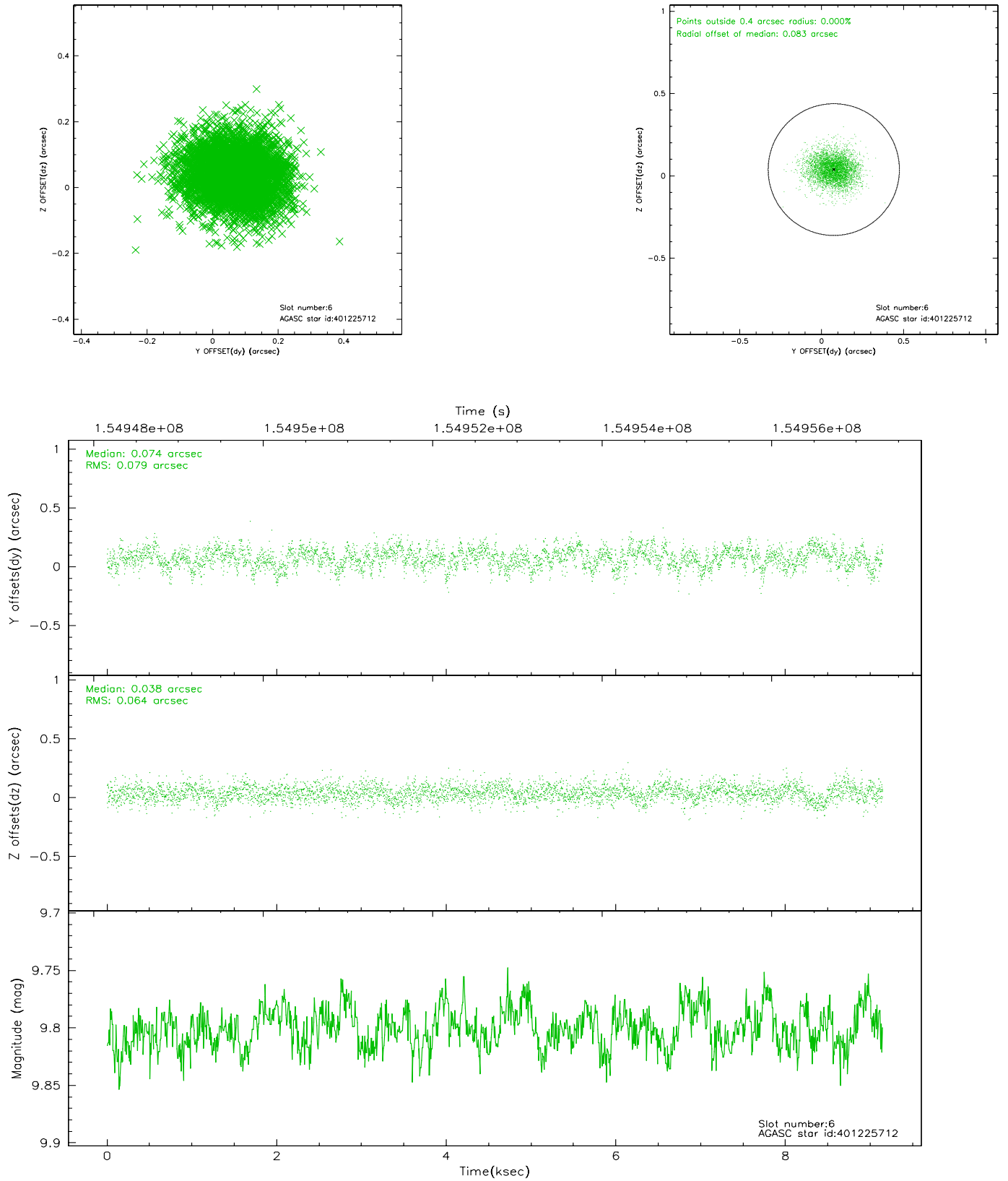
2.4.2 Slot 4



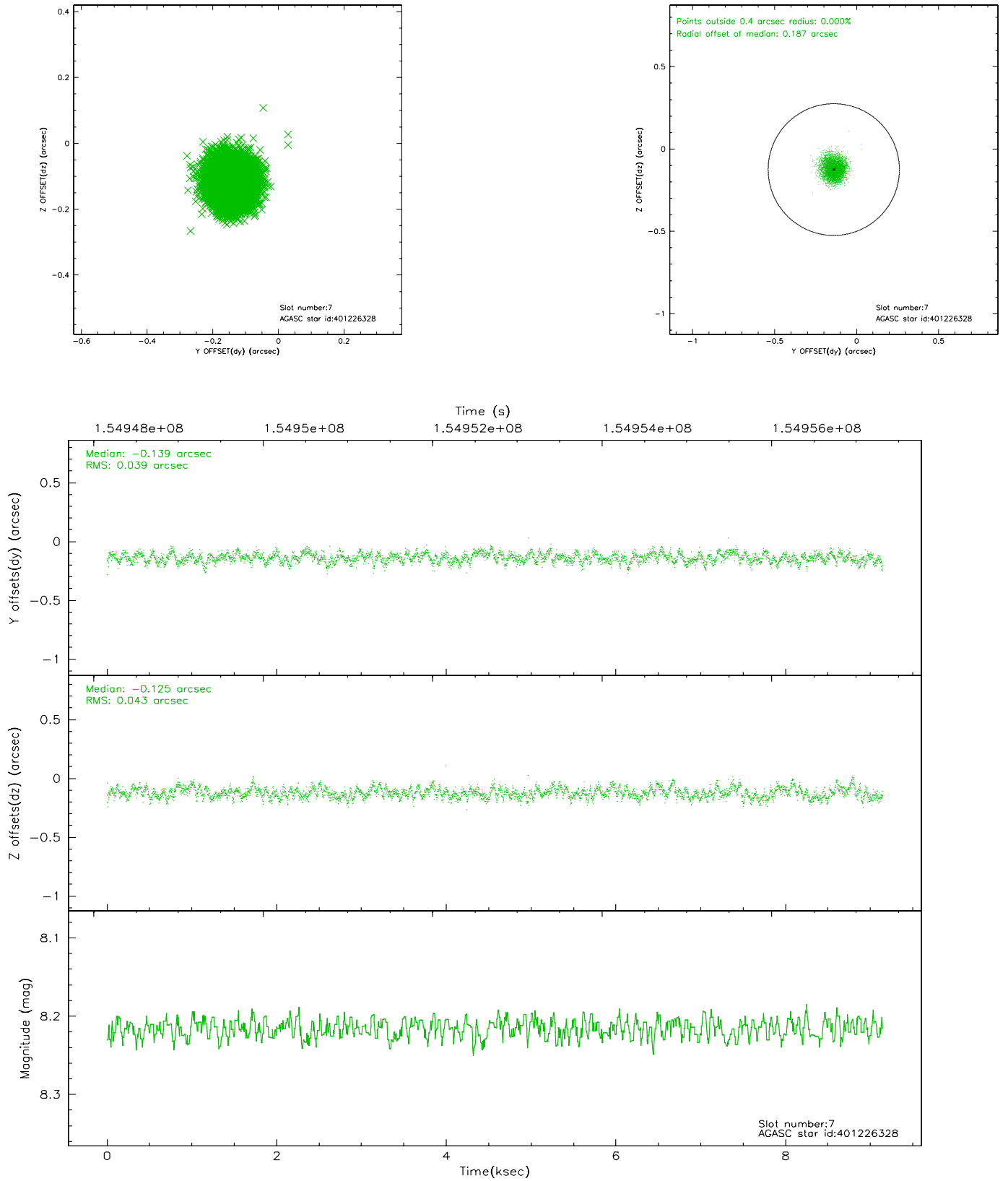
2.4.3 Slot 5



2.4.4 Slot 6

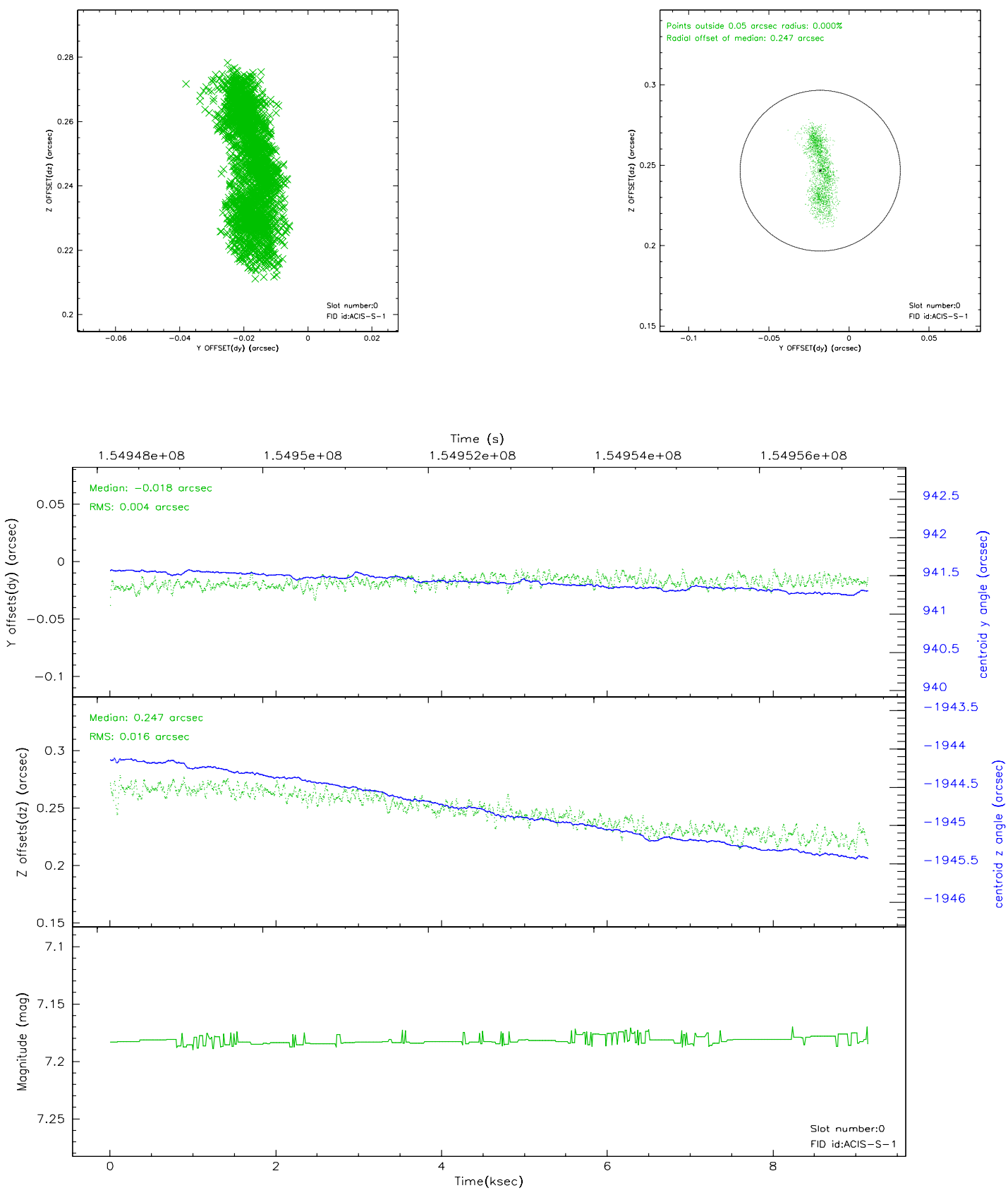


2.4.5 Slot 7

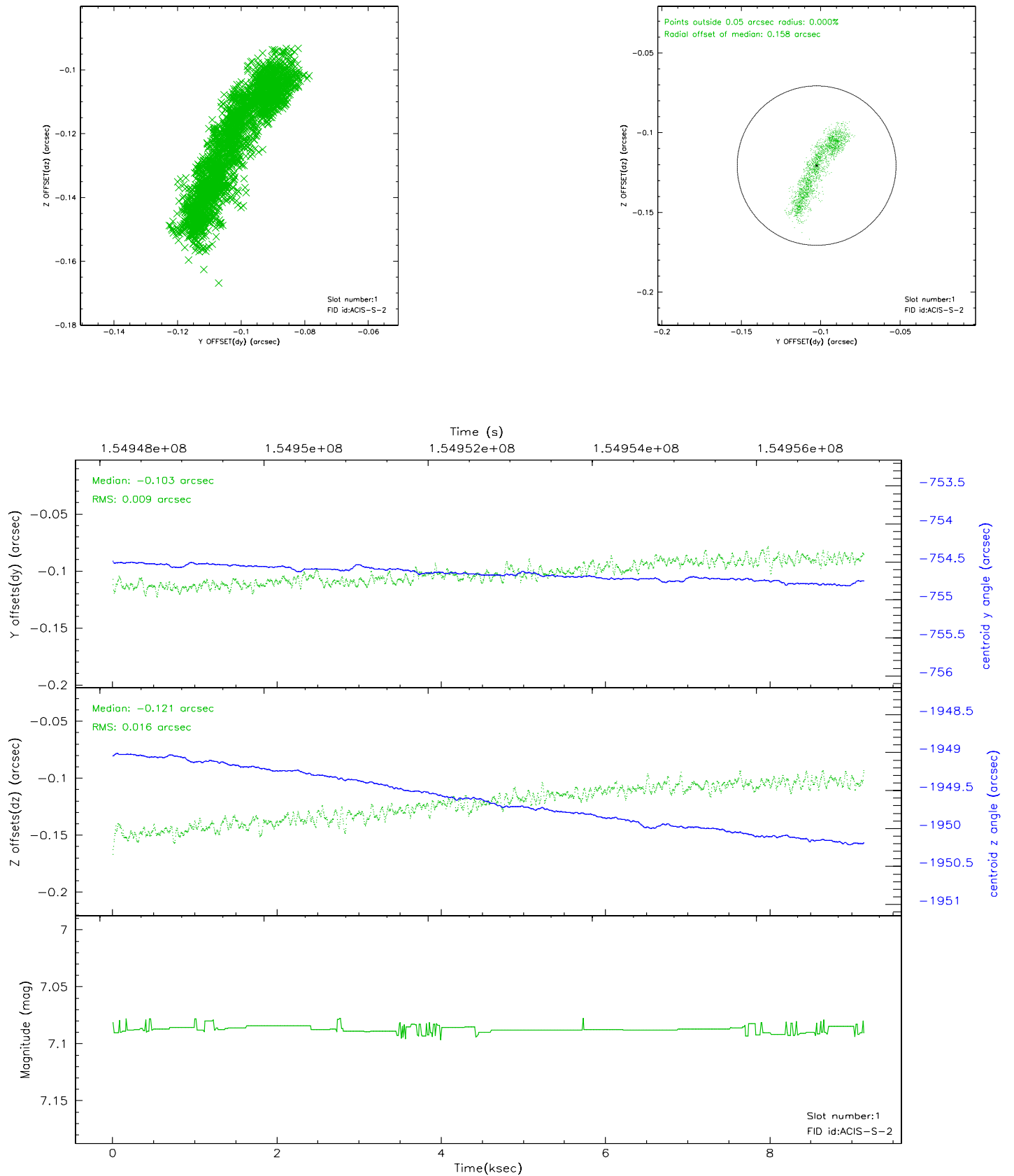


2.5 FID Slots

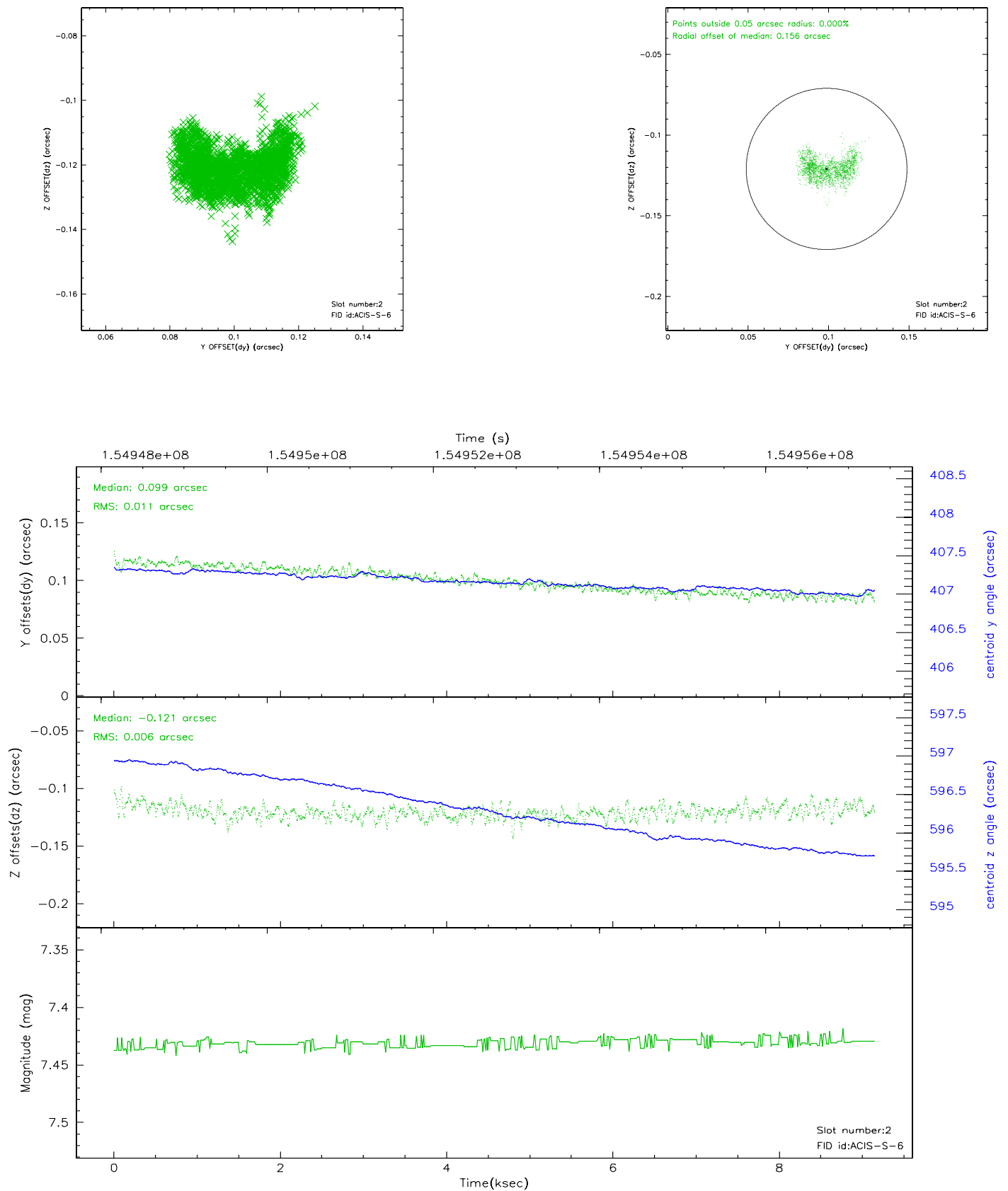
2.5.1 Slot 0



2.5.2 Slot 1



2.5.3 Slot 2



3 Point Sources

4.89 arcmin



A Summary

A.1 Status

V&V Scientist	Beth Sundheim
V&V Date (YYYY-MM-DD)	2006.10.13
V&V Edition	1
V&V Disposition and Status	OK
V&V Charge Time	9.146

A.2 Comments