

V&V Reference Report

L2 ASCDS Version : 7.6.8

Observation 4024 - L2 Version 001
Chandra X-Ray Center

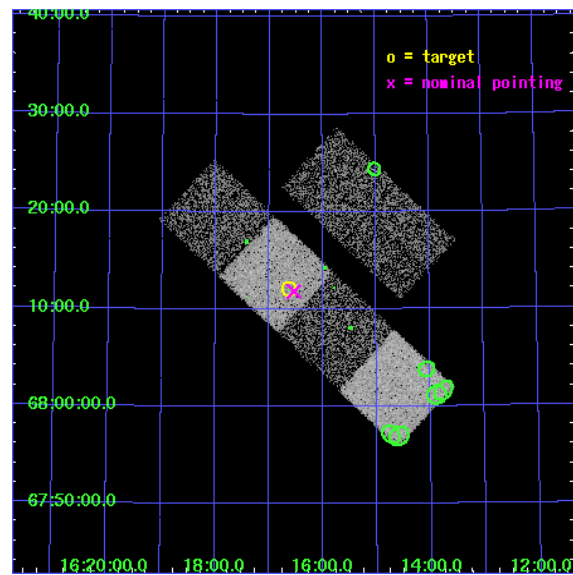
L2 Processing Date : Jul 14 2006

Contents

1	Front	2
2	OBI	3
2.1	OBI	3
2.1.1	Images	3
2.1.2	Bias	3
2.1.3	Parameters	4
2.1.4	Events	4
2.2	Compared Parameters	5
2.3	Aspect	6
2.4	Star Slots	9
2.4.1	Slot 3	9
2.4.2	Slot 4	10
2.4.3	Slot 5	11
2.4.4	Slot 6	12
2.4.5	Slot 7	13
2.5	FID Slots	14
2.5.1	Slot 0	14
2.5.2	Slot 1	15
2.5.3	Slot 2	16
3	Point Sources	17
A	Summary	18
A.1	Status	18
A.2	Comments	18

1 Front

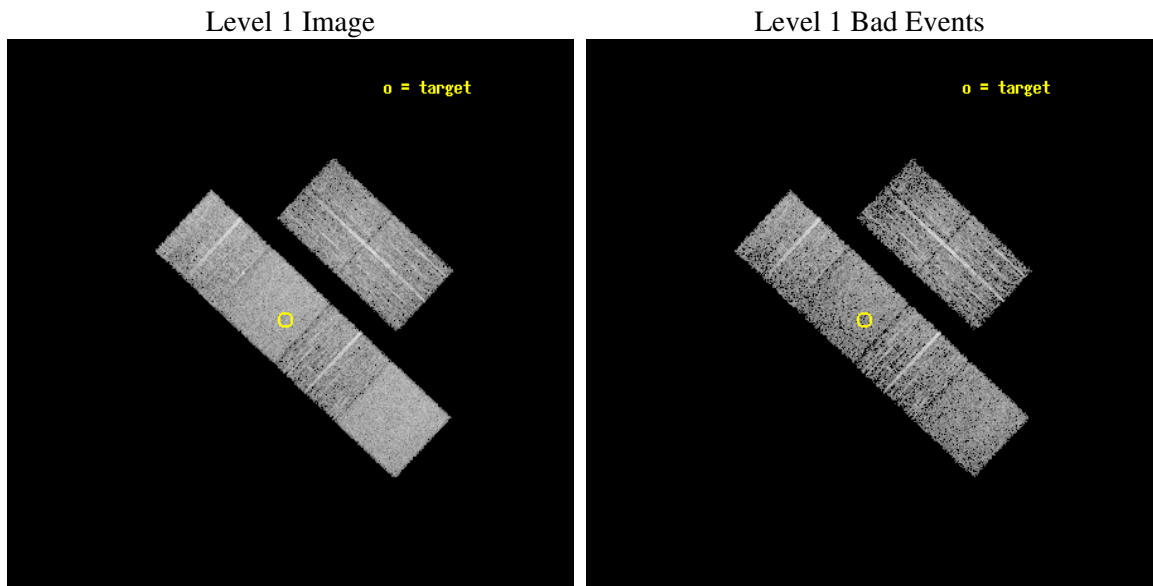
seq_num	700703
obs_id	4024
title	A CHANDRA SURVEY OF INFRARED-BRIGHT LINER GALAXIES
observer	Dr. Shobita Satyapal
object	IC 1218
dtcycle	0
cycle	P
ra_targ	244.15625
dec_targ	68.2025
ra_nom	244.13440093465
dec_nom	68.197317854275
roll_nom	223.07393563424
revision	2
ontime	4697.5999825001
livetime	4638.1161429665
ontime2	4697.5999825001
ontime3	4697.5999825001
ontime5	4697.5999825001
ontime6	4697.5999825001
ontime7	4697.5999825001
ontime8	4694.359141767
l2events	43099



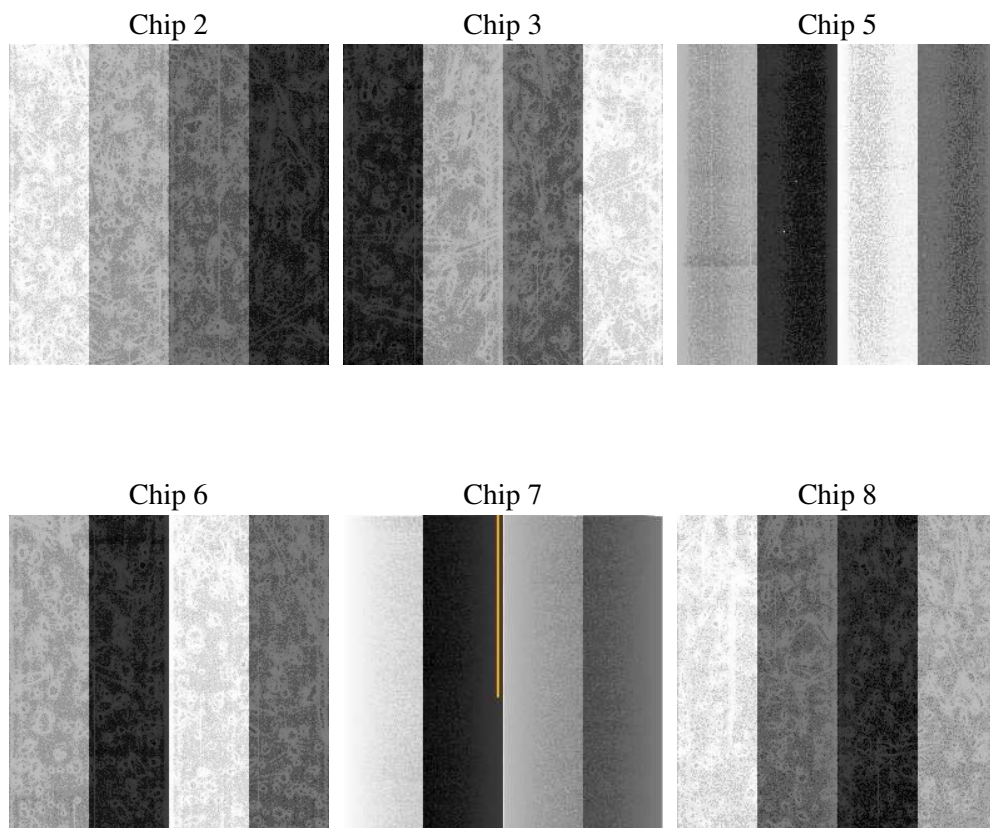
2 OBI

2.1 OBI

2.1.1 Images



2.1.2 Bias



2.1.3 Parameters

obi_num	0
ascdsver	7.6.8
caldbver	3.2.2
date	2006-07-14T06:07:34
revision	2

sched_exp_time	4944.000000
ontime	4702.6923898757
ontime2	4702.6923699677
ontime3	4702.6923699677
ontime5	4702.6923699677
ontime6	4702.6923699677
ontime7	4702.6923898757
ontime8	4699.4514296055
l1events	203161

2.1.4 Events

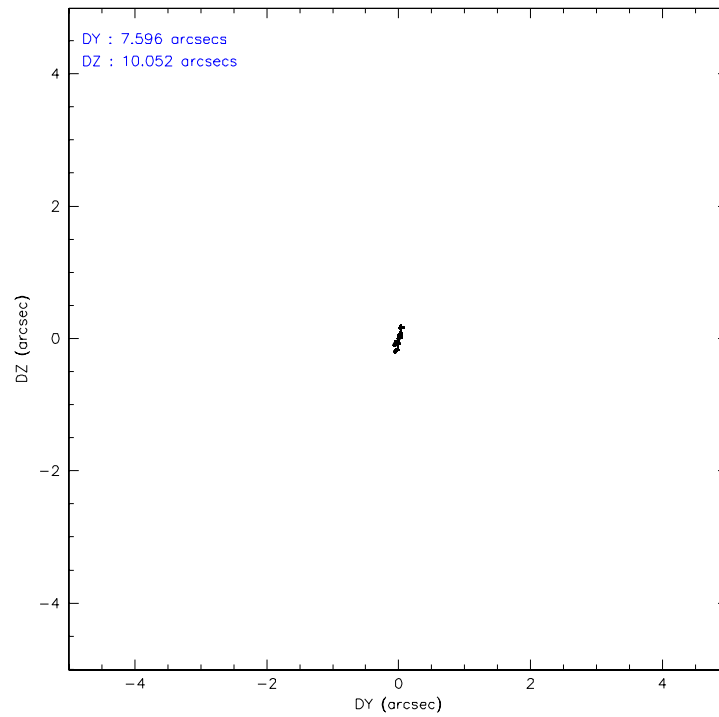
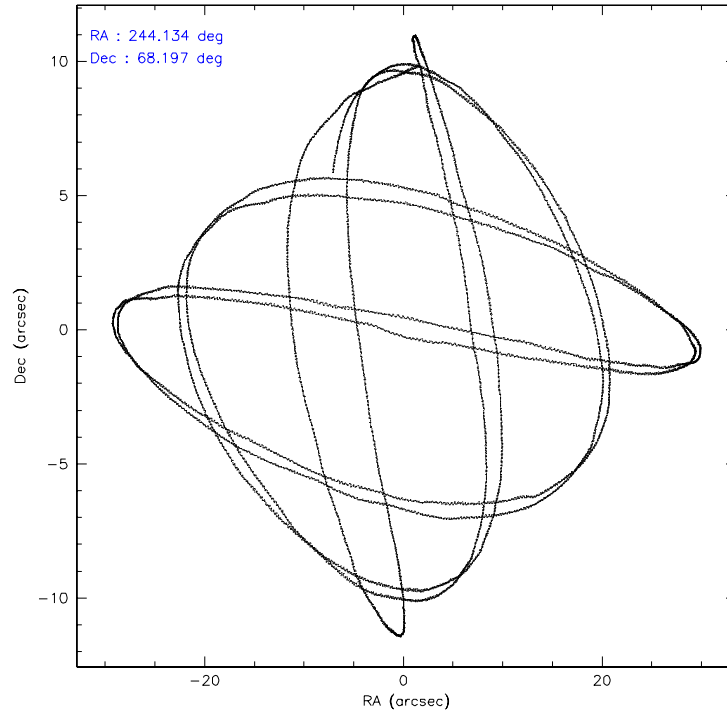
	ccd 2	ccd 3	ccd 5	ccd 6	ccd 7	ccd 8
level 1 events	29342	27962	40604	29276	38346	37631
rejected events	26002	24688	23311	25855	23791	30513
rejected %	88%	88%	57%	88%	62%	81%

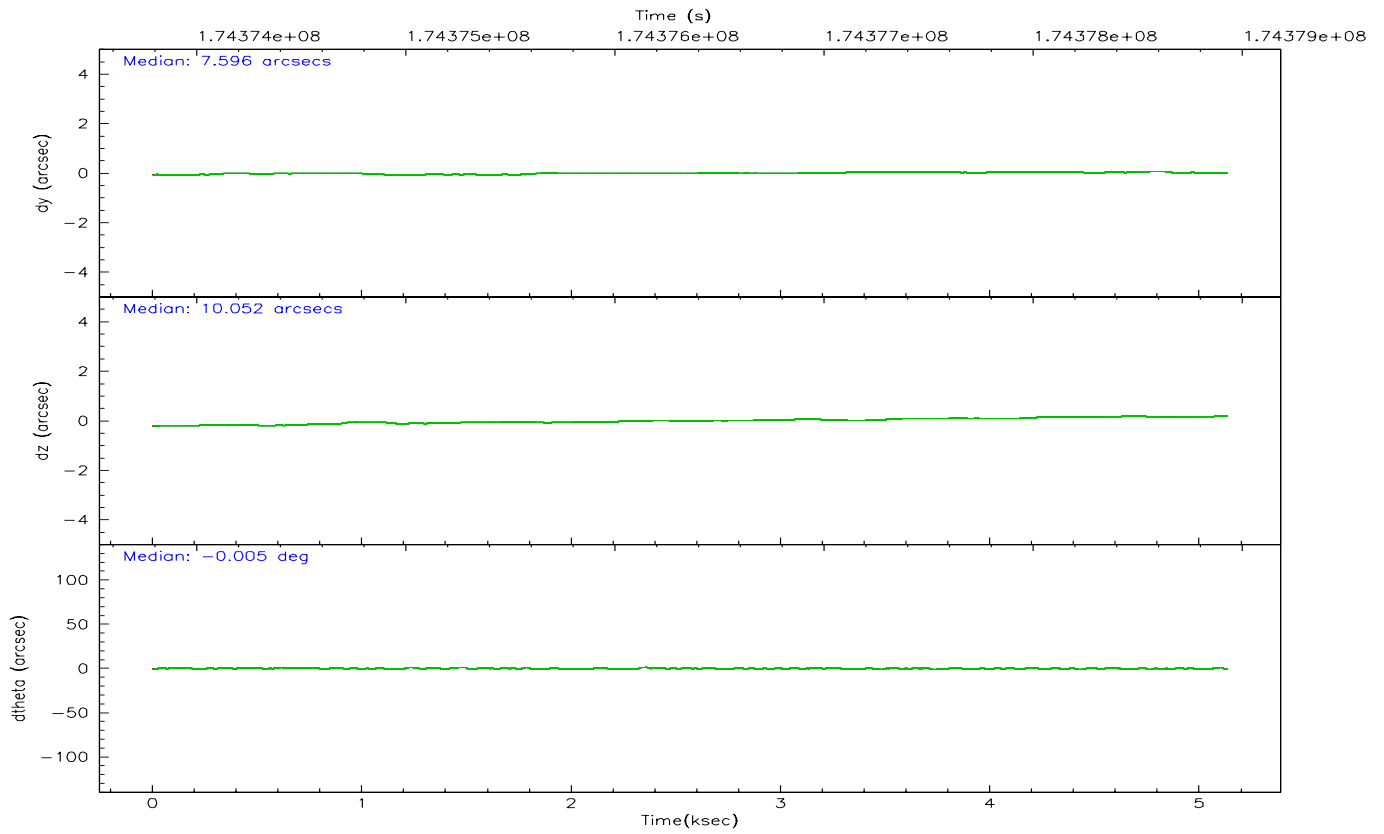
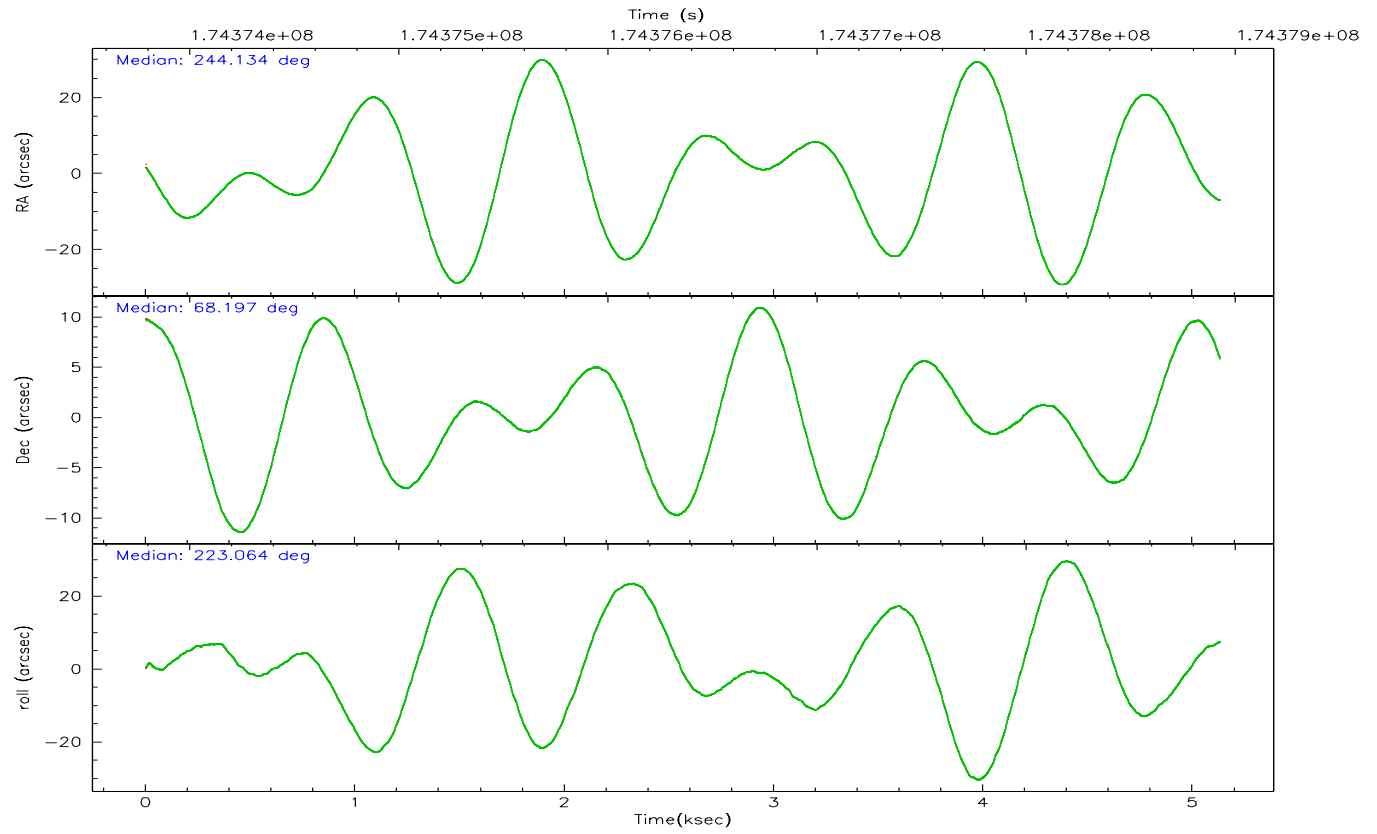
	ccd 2	ccd 3	ccd 5	ccd 6	ccd 7	ccd 8
grade 0 events	1465	1515	658	1339	894	2309
	4%	5%	1%	4%	2%	6%
grade 1 events	13	13	36	15	19	30
	0%	0%	0%	0%	0%	0%
grade 2 events	654	566	5292	682	3573	1507
	2%	2%	13%	2%	9%	4%
grade 3 events	325	306	409	332	728	787
	1%	1%	1%	1%	1%	2%
grade 4 events	316	322	376	345	691	699
	1%	1%	0%	1%	1%	1%
grade 5 events	1131	1253	1993	1194	2428	1656
	3%	4%	4%	4%	6%	4%
grade 6 events	582	567	10572	727	8675	1823
	1%	2%	26%	2%	22%	4%
grade 7 events	24856	23420	21268	24642	21338	28820
	84%	83%	52%	84%	55%	76%

2.2 Compared Parameters

Parameter	Planned	Actual	Parameter	Planned	Actual
Instrument	ACIS	ACIS	Obspar format version number	6	6
Detector	ACIS-235678	ACIS-235678	Obspar file type	PREDICTED	ACTUAL
Grating	NONE	NONE	Obspar update status	NONE	UPDATED
Data mode	FAINT	FAINT	On-chip summing requested	N	N
Observation mode	POINTING	POINTING	Subarray requested	NONE	NONE
Pointing RA	244.154825	244.1344009346512	Alternating exposures requested	N	N
Pointing Dec	68.223391	68.19731785427535	Primary exposure time	0.000000	3.2
Pointing Roll	222.898331	223.0739356342442			
SIM focus pos (mm)	-0.684267	-0.6828225247311905			
SIM defocus (mm)	0	0.001444936568705701			
SIM translation stage pos (mm)	-190.132523	-190.1400660498719			
SIM translation stage offset (mm)	0	0.00754346686406393			
Observation start time	174373983.184000	174373424.70561			
Observation start date	2003-07-12T05:11:59	2003-07-12T05:03:44			
Observation end time	174378927.184000	174379405.58087			
Observation end date	2003-07-12T06:34:23	2003-07-12T06:43:25			
Read mode	TIMED	TIMED			

2.3 Aspect



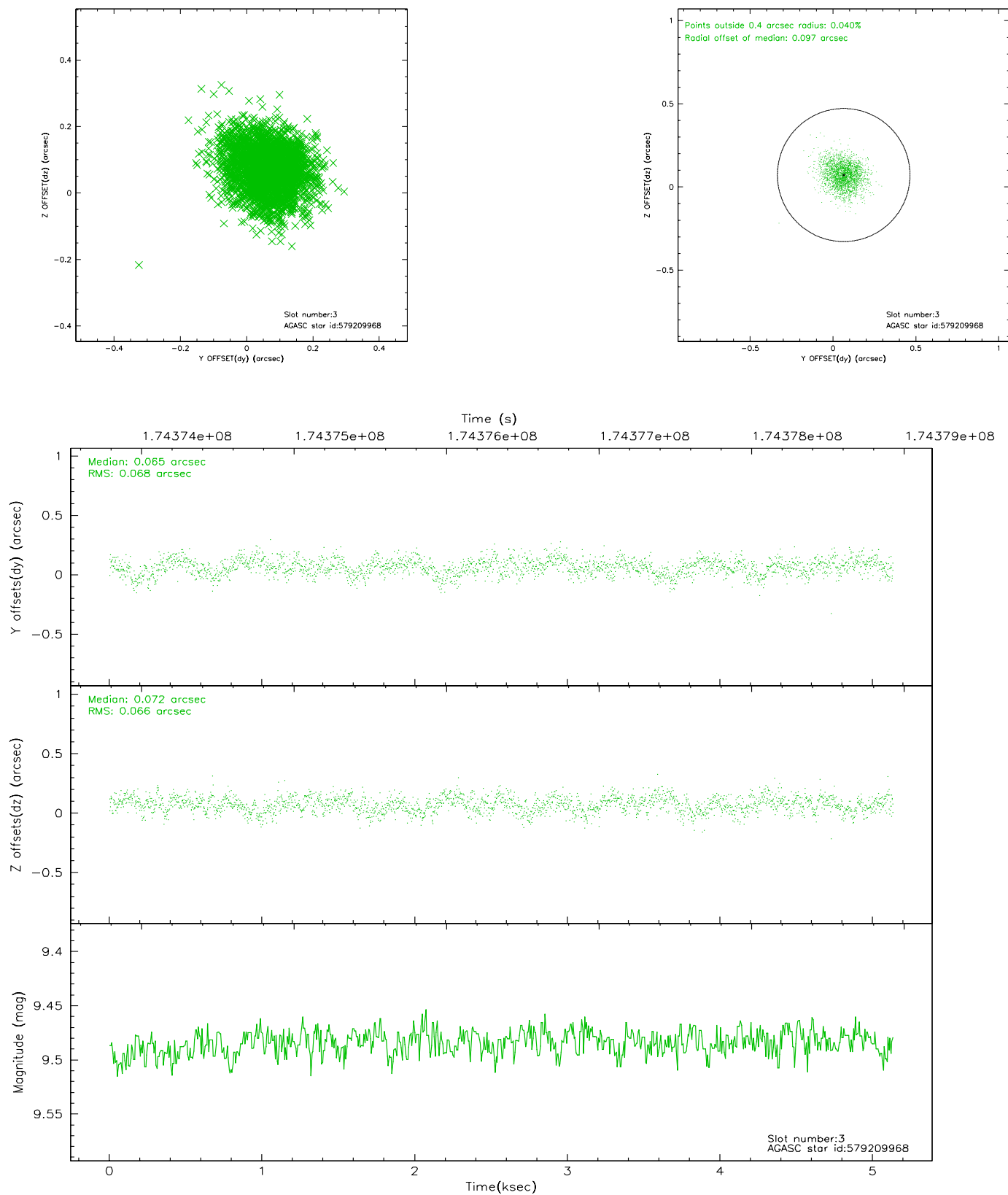


Slot Statistics

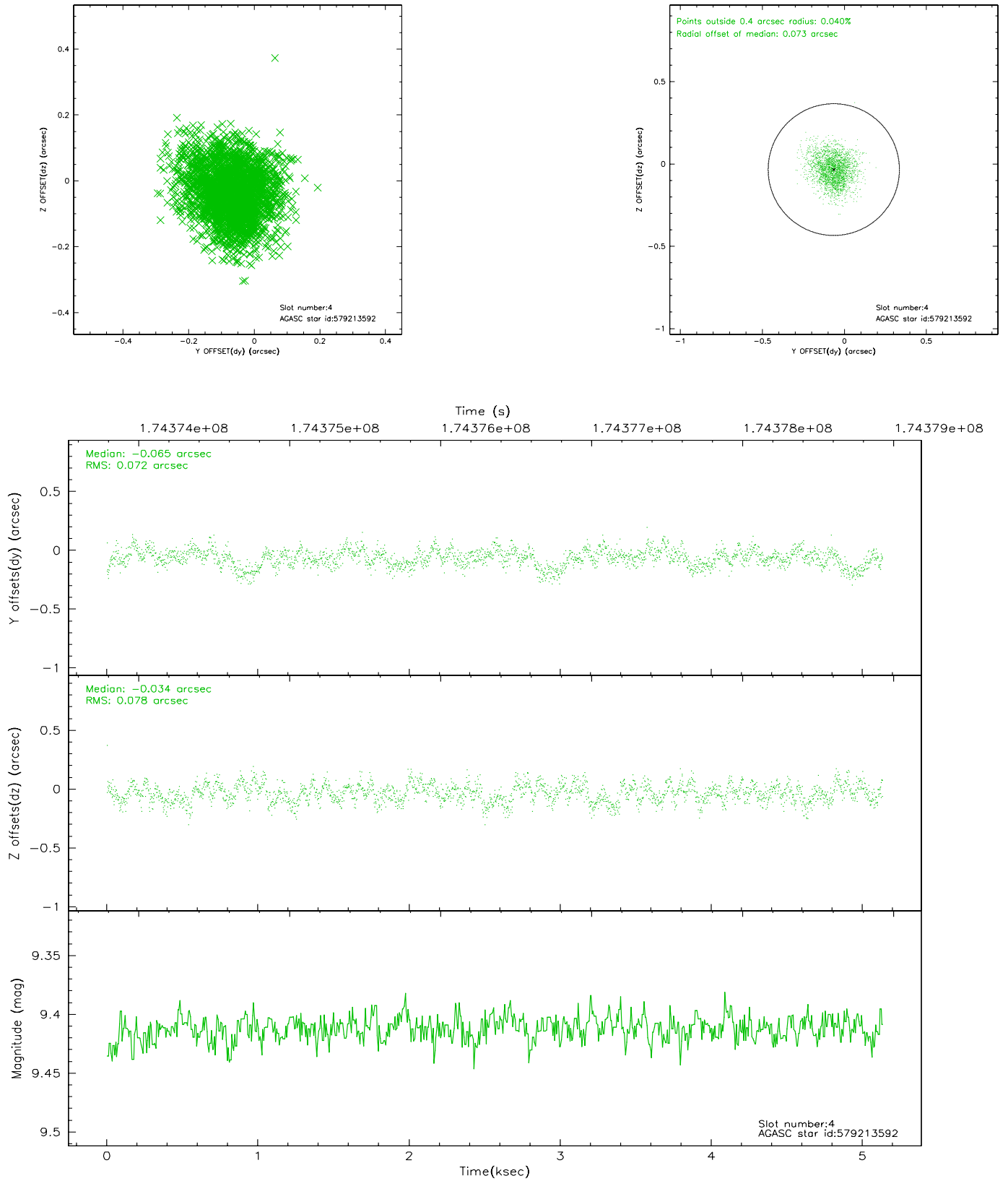
slot	status	id	mag	n_pts	med_dy	med_dz	dr1	dr2	ra	dec	mean_y	mean_z
0	FID	ACIS-S-2	7.10	1251	-0.032	0.003	0.007	0.012	0.000000	0.000000	-760.36	-1731.31
1	FID	ACIS-S-4	7.20	1252	0.043	0.015	0.006	0.010	0.000000	0.000000	2152.42	176.02
2	FID	ACIS-S-5	7.23	1252	-0.042	-0.008	0.007	0.011	0.000000	0.000000	-1811.73	170.93
3	GUIDE	579209968	9.48	2502	0.065	0.072	0.101	0.162	245.936339	68.404692	-2196.19	1103.66
4	GUIDE	579213592	9.41	2503	-0.065	-0.034	0.113	0.183	242.484001	68.506933	898.94	-2268.55
5	GUIDE	579215256	9.10	2503	0.061	-0.042	0.077	0.121	244.220286	68.793690	-1458.99	-1446.75
6	GUIDE	579223000	10.21	2501	0.027	0.067	0.124	0.211	243.091768	68.186217	1124.44	-878.81
7	GUIDE	579227624	7.96	2503	-0.078	-0.061	0.063	0.103	245.239148	67.907469	-309.62	1823.04

2.4 Star Slots

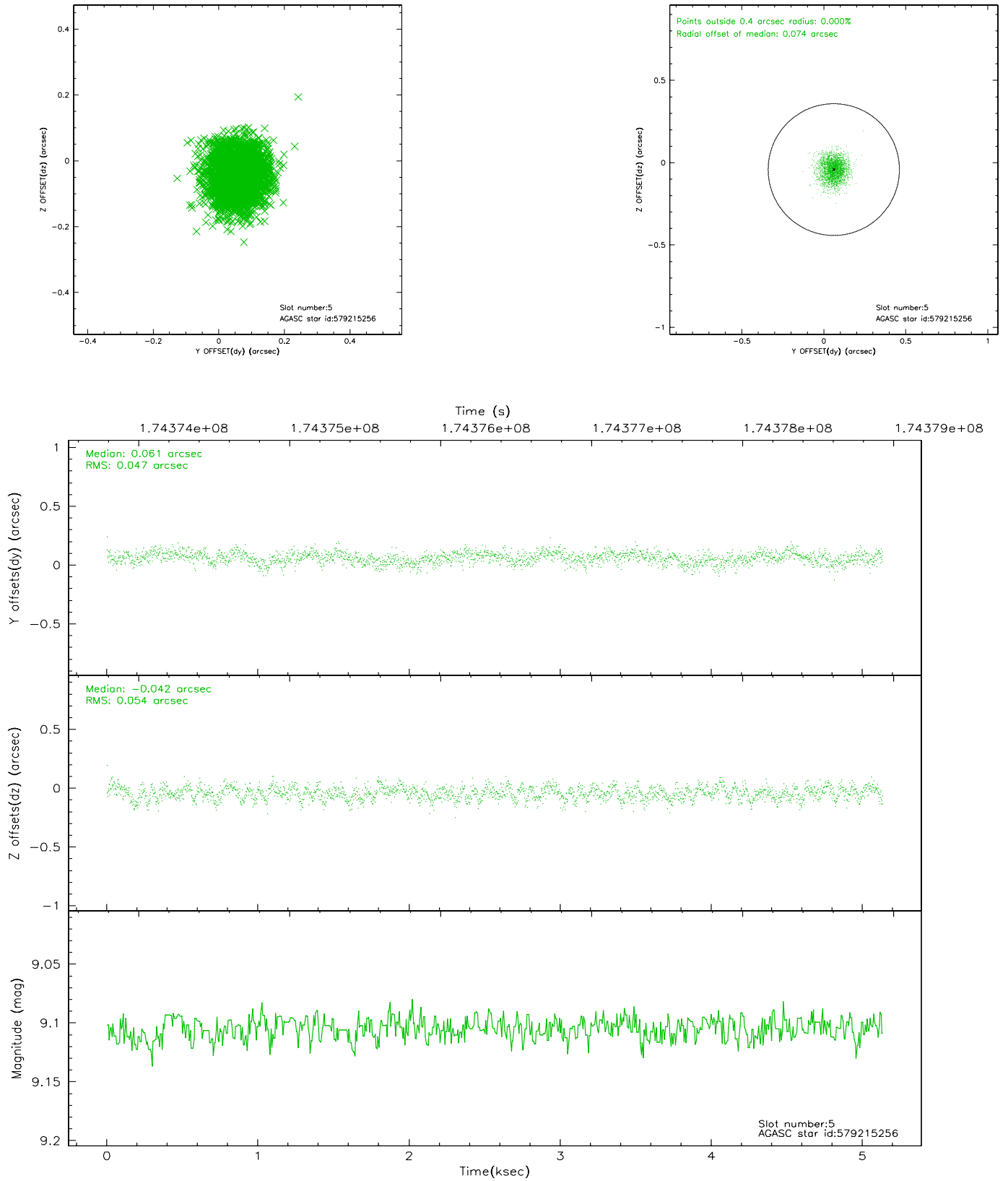
2.4.1 Slot 3



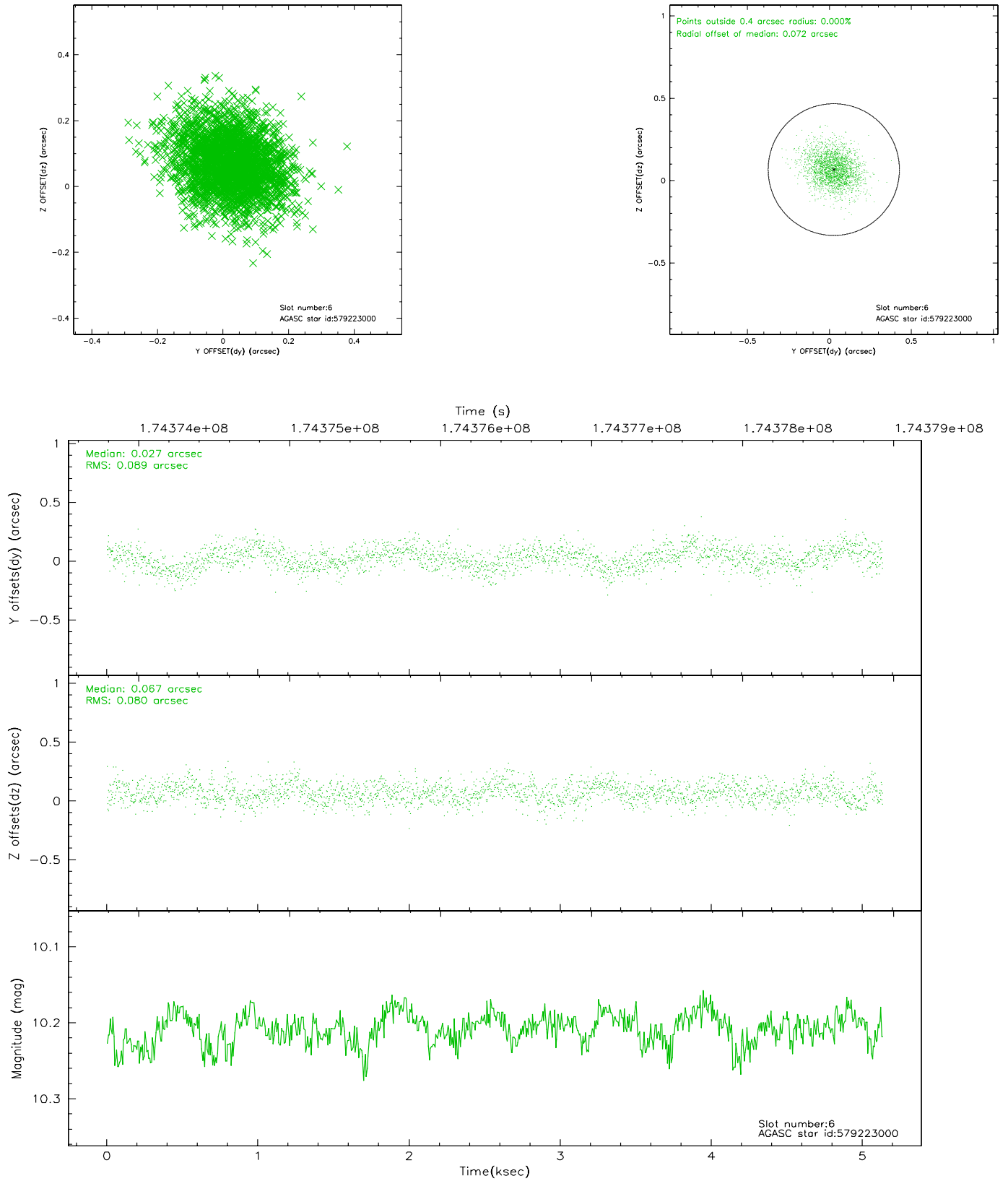
2.4.2 Slot 4



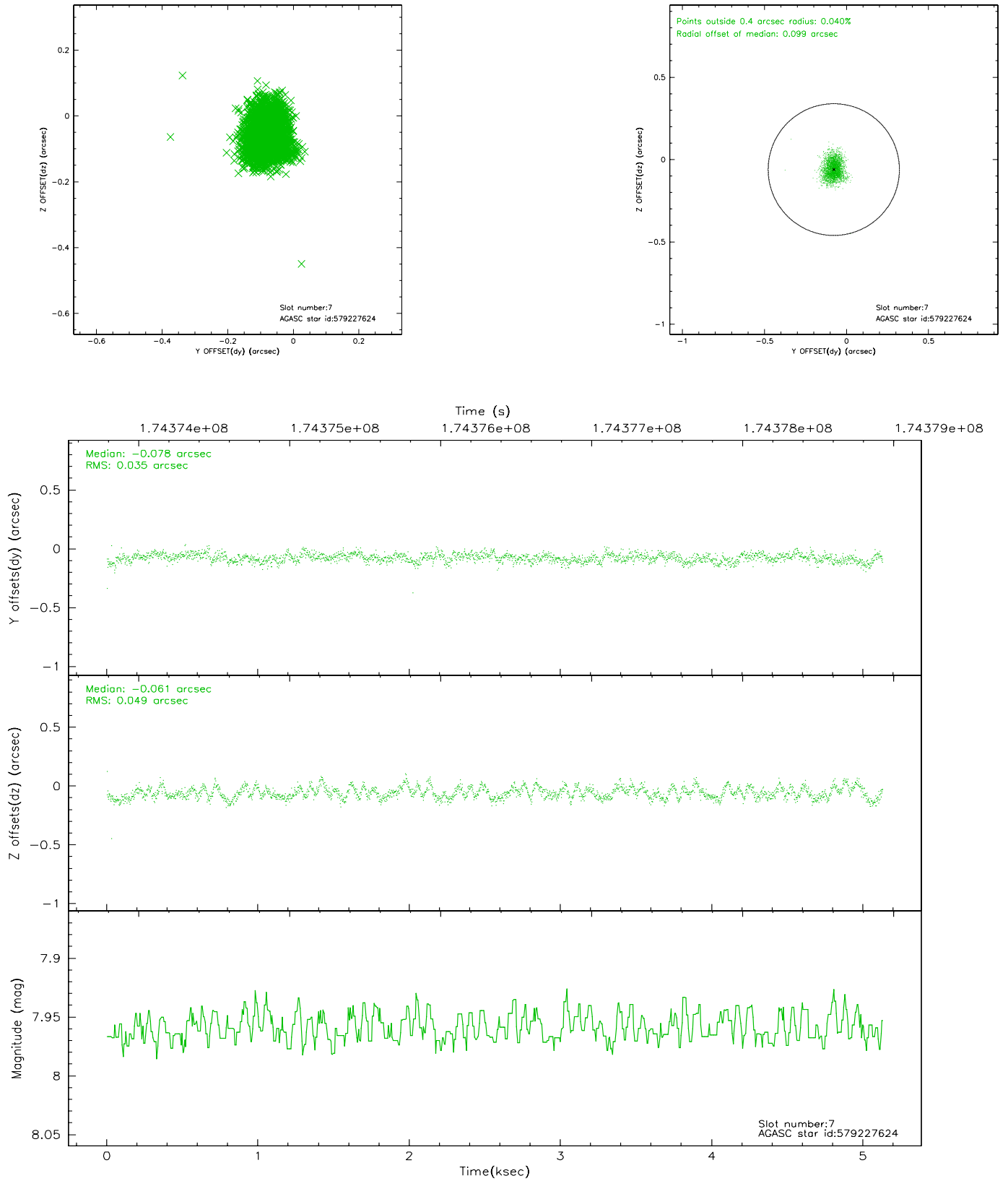
2.4.3 Slot 5



2.4.4 Slot 6

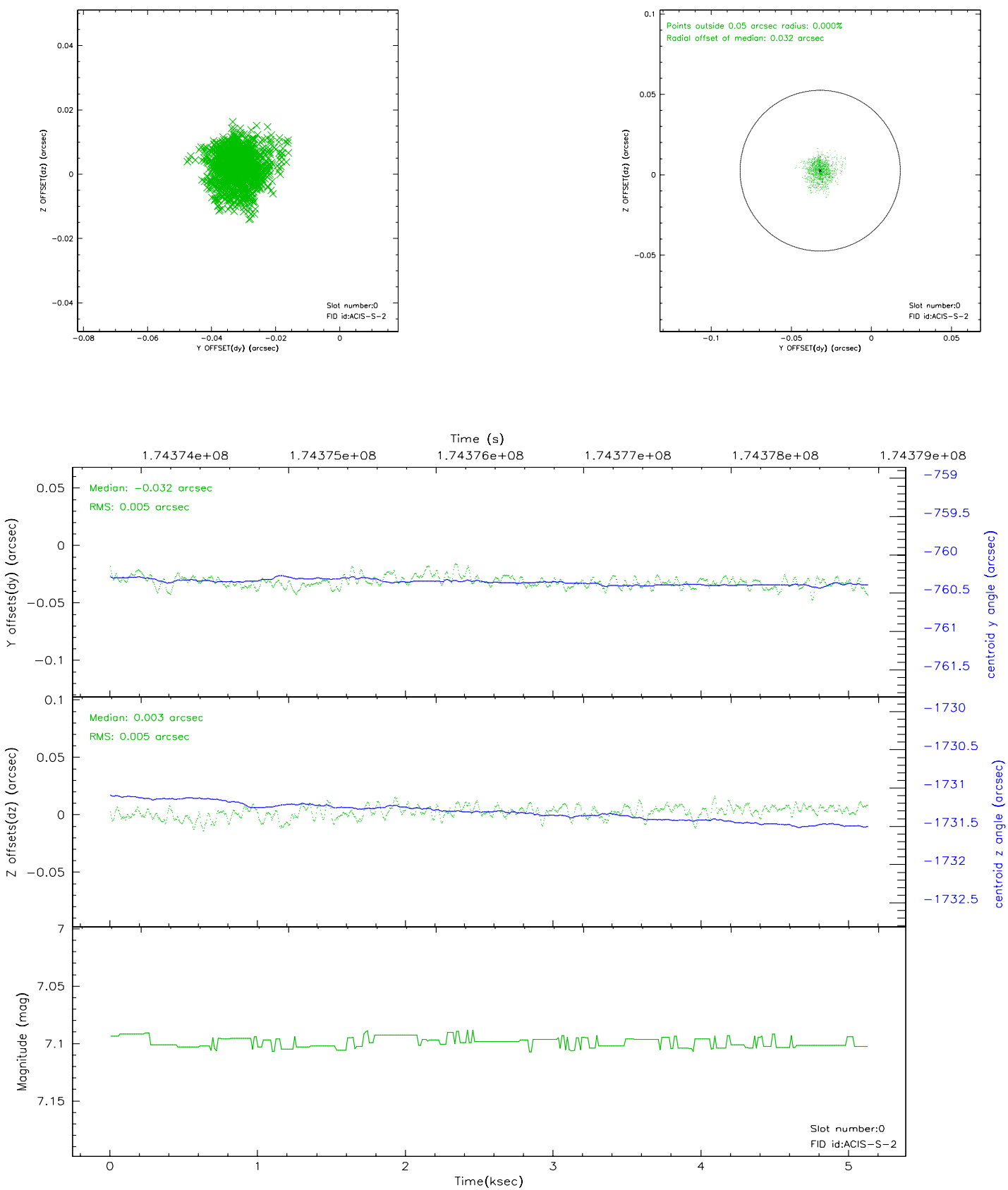


2.4.5 Slot 7

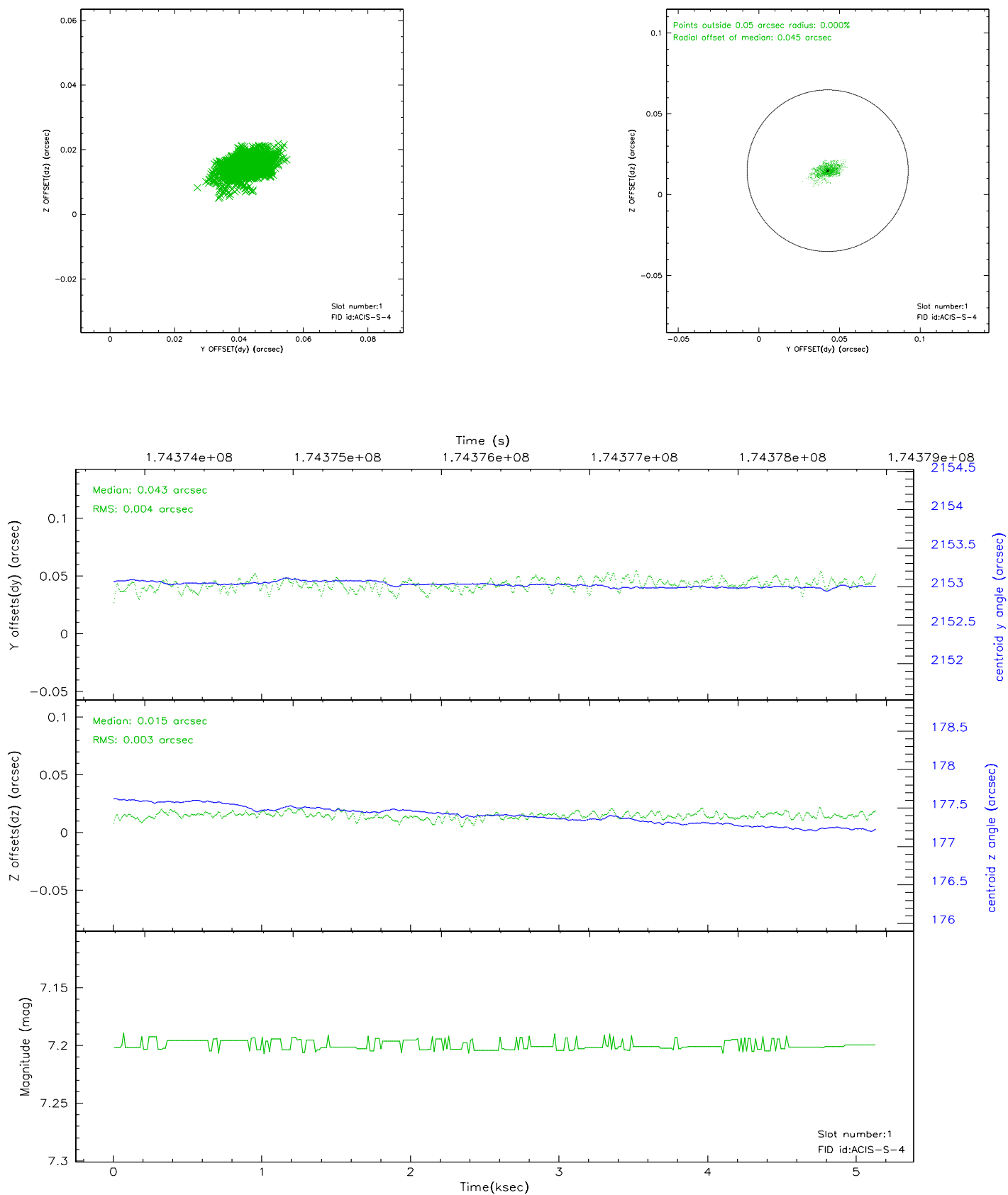


2.5 FID Slots

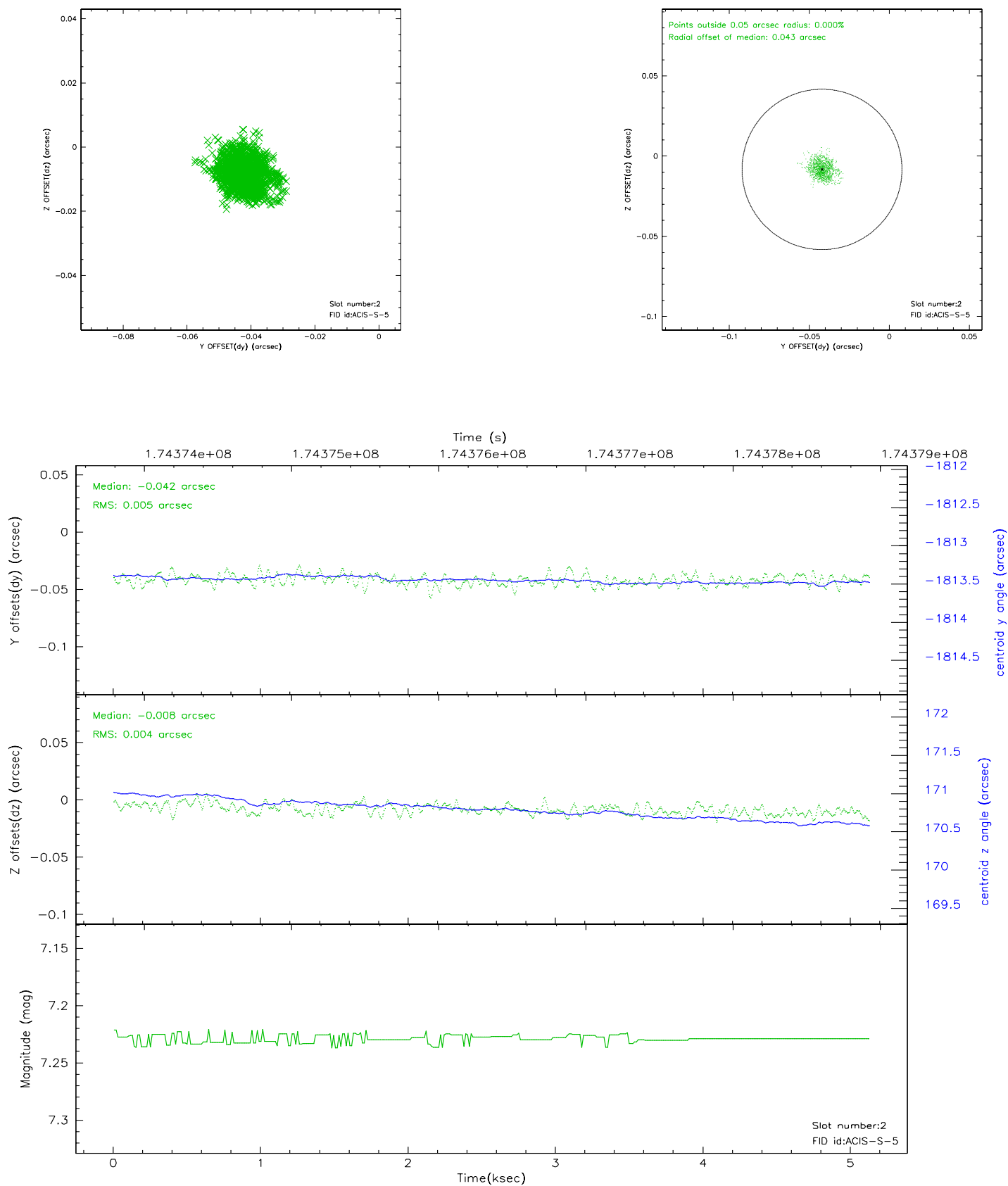
2.5.1 Slot 0



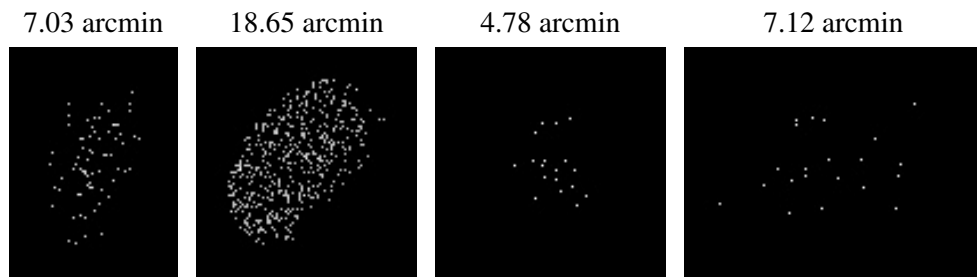
2.5.2 Slot 1



2.5.3 Slot 2



3 Point Sources



A Summary

A.1 Status

V&V Scientist	Beth Sundheim
V&V Date (YYYY-MM-DD)	2006.07.14
V&V Edition	1
V&V Disposition and Status	OK
V&V Charge Time	4.697

A.2 Comments