

V&V Reference Report

L2 ASCDS Version : 7.6.8

Observation 4020 - L2 Version 001
Chandra X-Ray Center

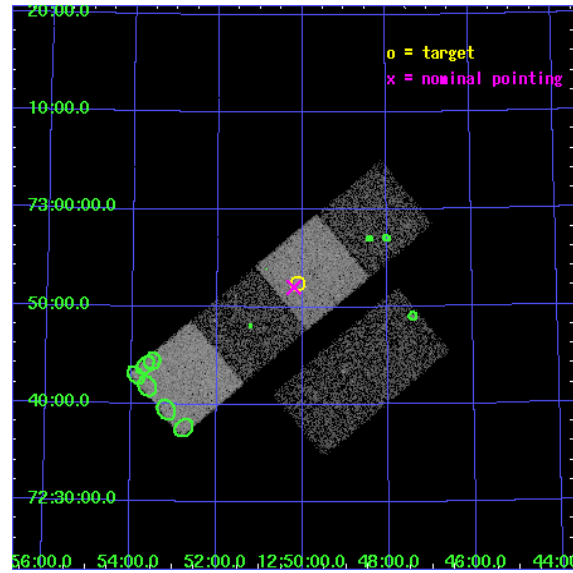
L2 Processing Date : Jul 7 2006

Contents

1	Front	2
2	OBI	3
2.1	OBI	3
2.1.1	Images	3
2.1.2	Bias	3
2.1.3	Parameters	4
2.1.4	Events	4
2.2	Compared Parameters	5
2.3	Aspect	6
2.4	Star Slots	9
2.4.1	Slot 3	9
2.4.2	Slot 4	10
2.4.3	Slot 5	11
2.4.4	Slot 6	12
2.4.5	Slot 7	13
2.5	FID Slots	14
2.5.1	Slot 0	14
2.5.2	Slot 1	15
2.5.3	Slot 2	16
3	Point Sources	17
A	Summary	18
A.1	Status	18
A.2	Comments	18

1 Front

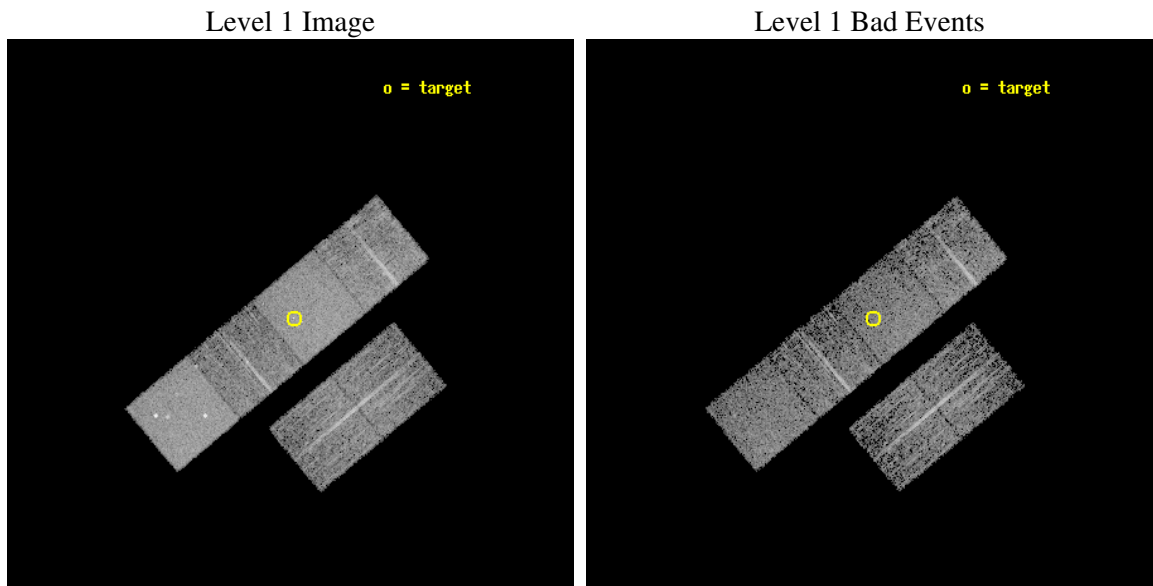
seq_num	700699
obs_id	4020
title	A CHANDRA SURVEY OF INFRARED-BRIGHT LINER GALAXIES
observer	Dr. Shobita Satyapal
object	NGC4750
dtcycle	0
cycle	P
ra_targ	192.529583
dec_targ	72.875
ra_nom	192.55056587448
dec_nom	72.867599010484
roll_nom	320.14462829989
revision	2
ontime	4995.1999813914
livetime	4931.9477514787
ontime2	4995.1999813914
ontime3	4995.1999813914
ontime5	4995.1999813914
ontime6	4995.1999813914
ontime7	4995.1999813914
ontime8	4995.1999813914
l2events	59354



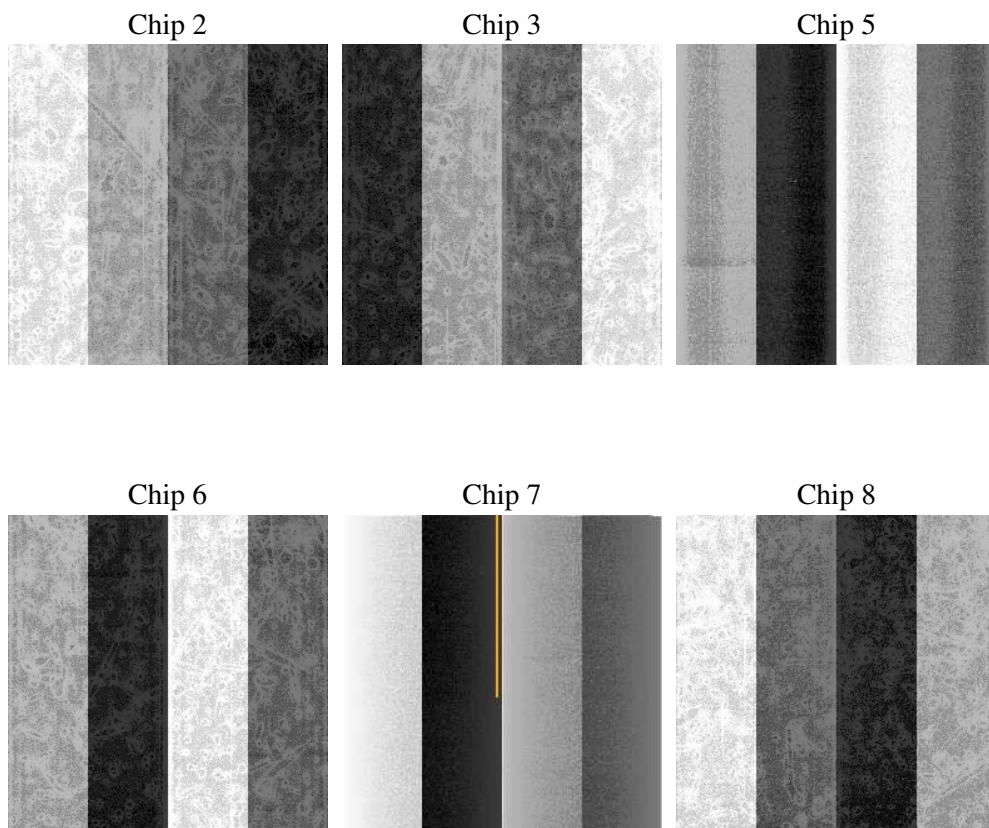
2 OBI

2.1 OBI

2.1.1 Images



2.1.2 Bias



2.1.3 Parameters

obi_num	0
ascdsver	7.6.8
caldsver	3.2.2
date	2006-07-07T16:35:50
revision	2

sched_exp_time	4932.000000
ontime	5000.8702741861
ontime2	5000.8702741861
ontime3	5000.8702741861
ontime5	5000.8702741861
ontime6	5000.8702741861
ontime7	5000.8702741861
ontime8	5000.8702741861
l1events	232853

2.1.4 Events

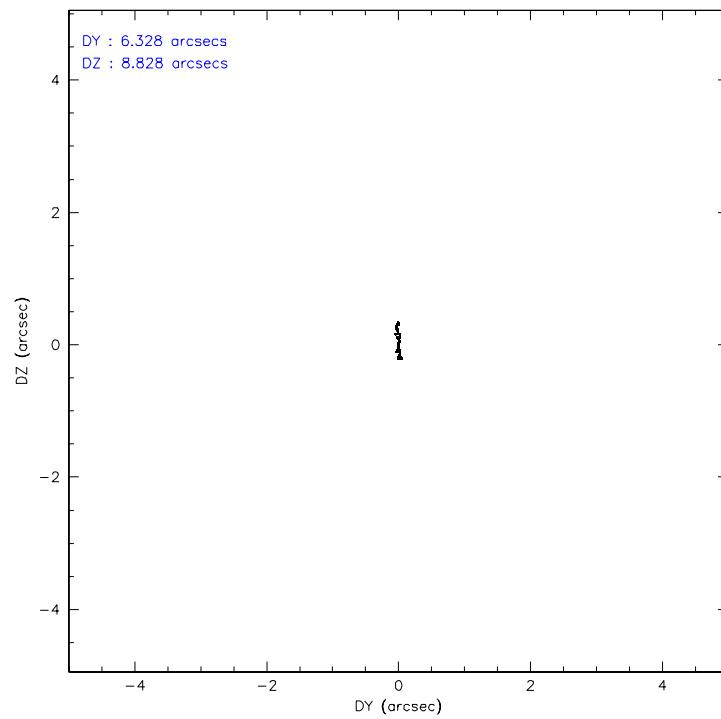
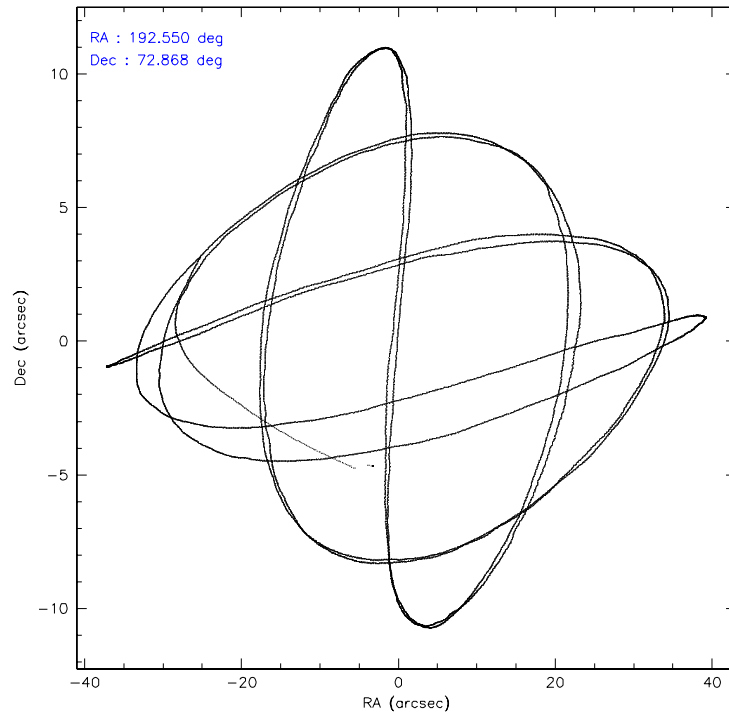
	ccd 2	ccd 3	ccd 5	ccd 6	ccd 7	ccd 8
level 1 events	32009	30546	51657	31015	47670	39956
rejected events	27822	26438	26160	26440	27012	31077
rejected %	86%	86%	50%	85%	56%	77%

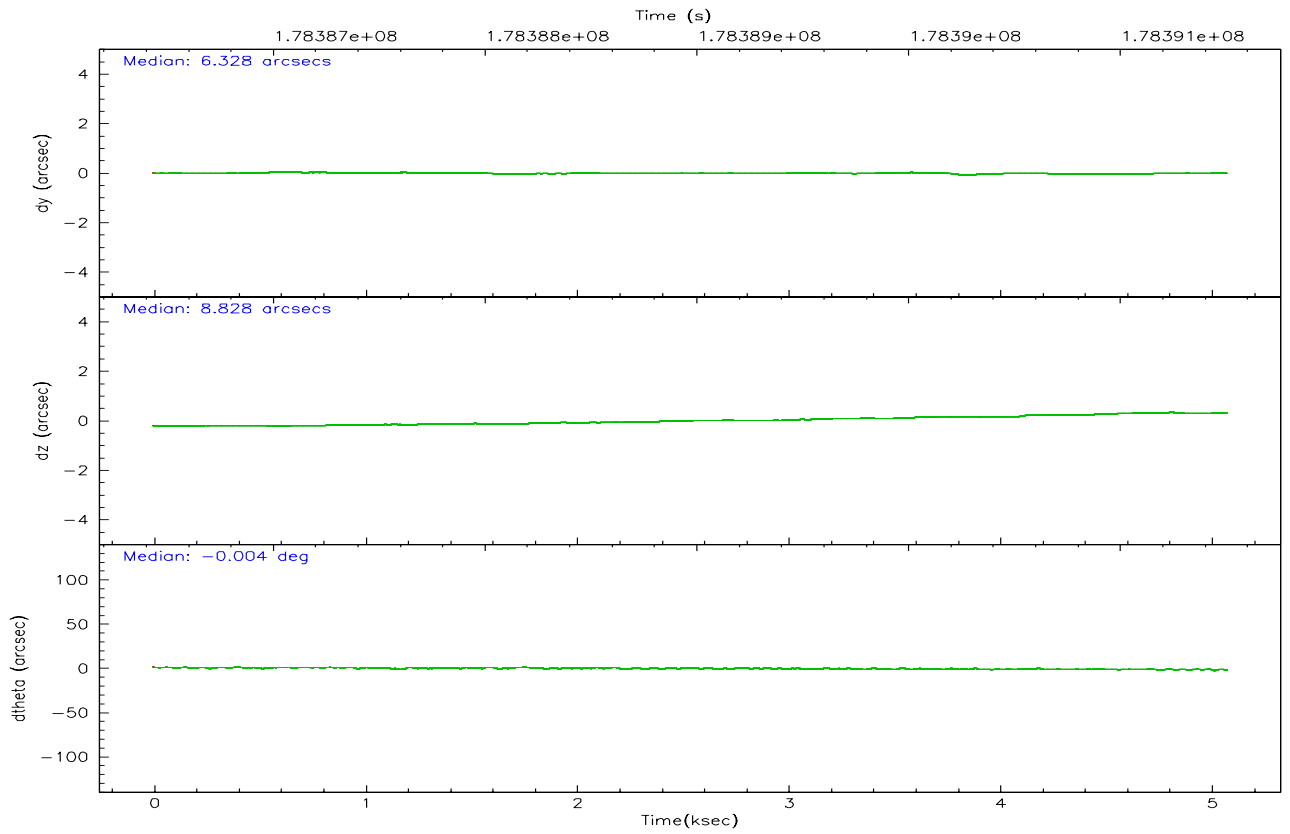
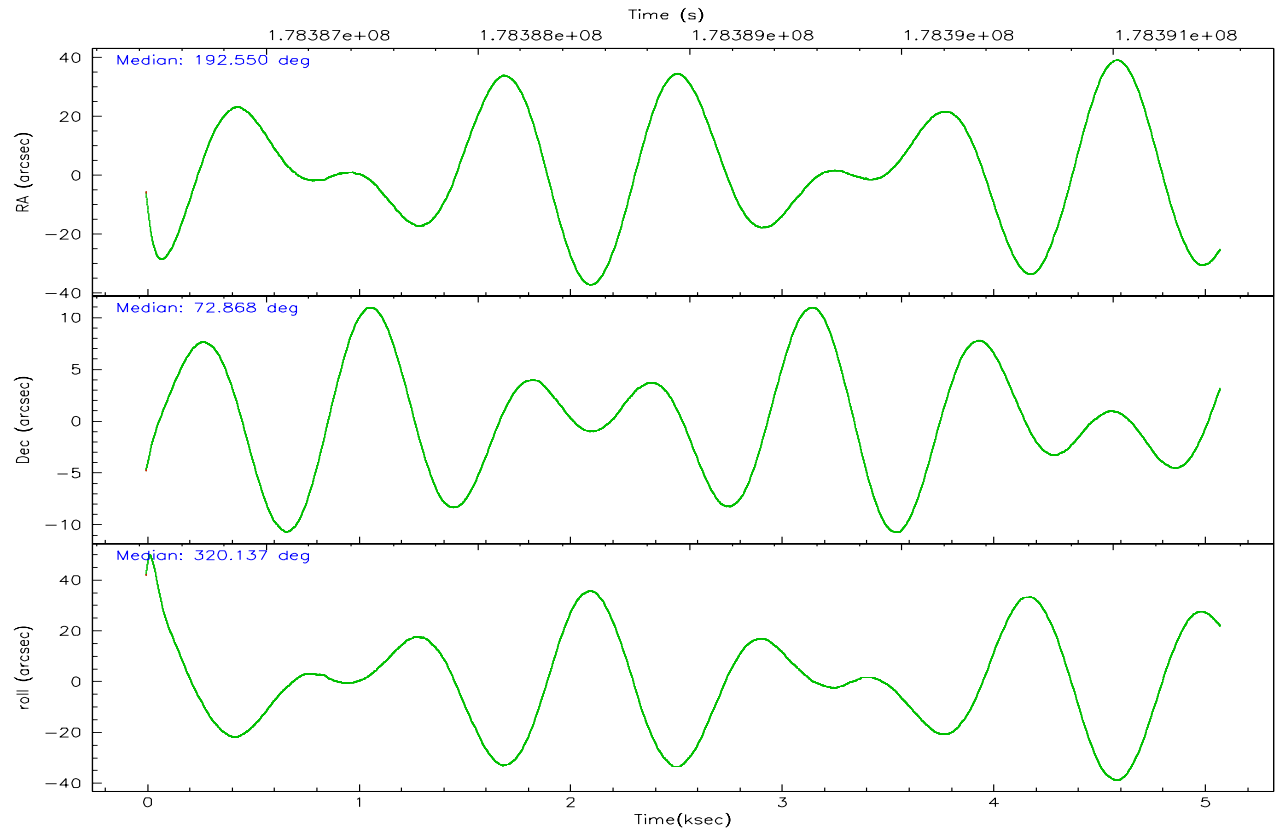
	ccd 2	ccd 3	ccd 5	ccd 6	ccd 7	ccd 8
grade 0 events	2034	1955	2885	2168	1506	3225
	6%	6%	5%	6%	3%	8%
grade 1 events	25	16	100	18	20	33
	0%	0%	0%	0%	0%	0%
grade 2 events	803	723	7757	833	4847	1857
	2%	2%	15%	2%	10%	4%
grade 3 events	341	372	647	367	1124	902
	1%	1%	1%	1%	2%	2%
grade 4 events	377	387	629	421	1078	797
	1%	1%	1%	1%	2%	1%
grade 5 events	1206	1357	2264	1411	2830	1873
	3%	4%	4%	4%	5%	4%
grade 6 events	642	676	13618	792	12126	2099
	2%	2%	26%	2%	25%	5%
grade 7 events	26581	25060	23757	25005	24139	29170
	83%	82%	45%	80%	50%	73%

2.2 Compared Parameters

Parameter	Planned	Actual	Parameter	Planned	Actual
Instrument	ACIS	ACIS	Obspar format version number	6	6
Detector	ACIS-235678	ACIS-235678	Obspar file type	PREDICTED	ACTUAL
Grating	NONE	NONE	Obspar update status	NONE	UPDATED
Data mode	FAINT	FAINT	On-chip summing requested	N	N
Observation mode	POINTING	POINTING	Subarray requested	NONE	NONE
Pointing RA	192.459394	192.5505658744822	Alternating exposures requested	N	N
Pointing Dec	72.871889	72.8675990104844	Primary exposure time	0.000000	3.2
Pointing Roll	320.075013	320.1446282998852			
SIM focus pos (mm)	-0.684267	-0.6828225247311905			
SIM defocus (mm)	0	0.001444936568705701			
SIM translation stage pos (mm)	-190.132523	-190.1400660498719			
SIM translation stage offset (mm)	0	0.00754346686406393			
Observation start time	178386570.184000	178385427.08939			
Observation start date	2003-08-27T15:48:26	2003-08-27T15:30:27			
Observation end time	178391502.184000	178391910.21467			
Observation end date	2003-08-27T17:10:38	2003-08-27T17:18:30			
Read mode	TIMED	TIMED			

2.3 Aspect



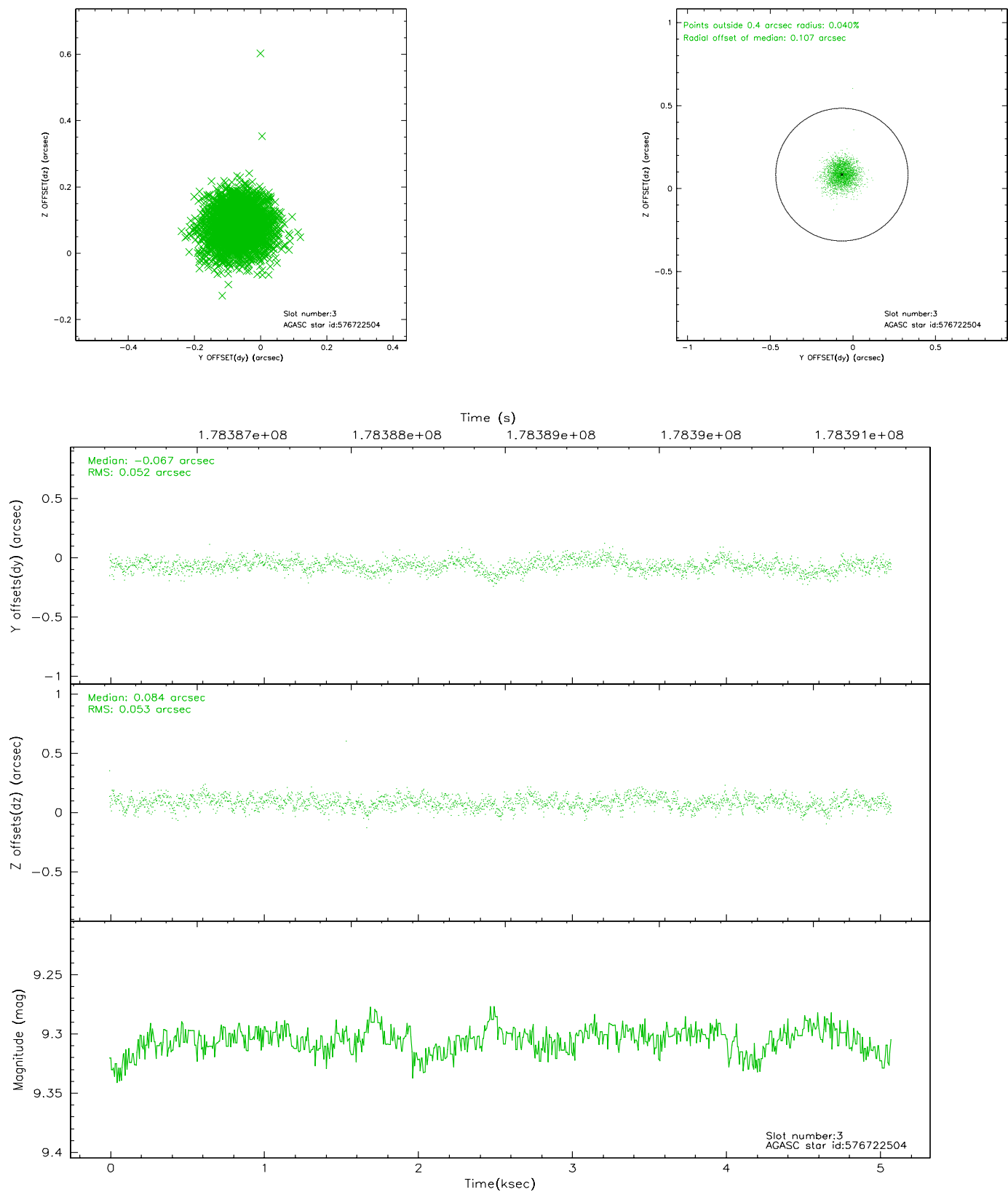


Slot Statistics

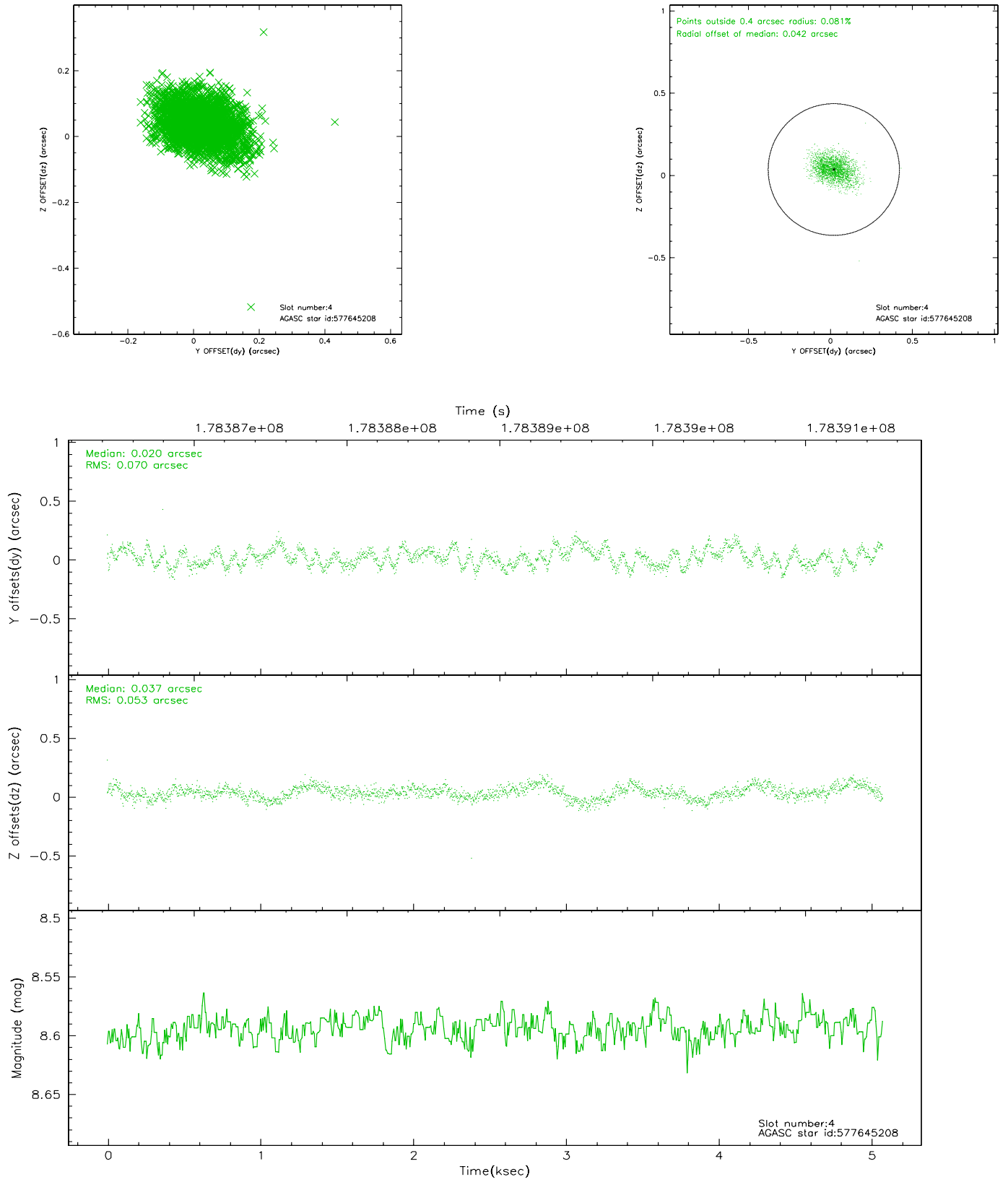
slot	status	id	mag	n_pts	med_dy	med_dz	dr1	dr2	ra	dec	mean_y	mean_z
0	FID	ACIS-S-2	7.10	1239	-0.029	-0.018	0.007	0.013	0.000000	0.000000	-759.10	-1730.07
1	FID	ACIS-S-4	7.20	1239	0.023	0.019	0.005	0.011	0.000000	0.000000	2153.70	177.20
2	FID	ACIS-S-5	7.22	1238	-0.025	0.007	0.007	0.011	0.000000	0.000000	-1810.39	172.24
3	GUIDE	576722504	9.30	2478	-0.067	0.084	0.079	0.126	190.500607	72.964040	-1818.90	-1045.89
4	GUIDE	577645208	8.59	2478	0.020	0.037	0.092	0.150	192.257714	73.594476	-1827.66	1863.41
5	GUIDE	577645680	8.74	2478	0.053	-0.078	0.062	0.101	193.506665	72.767323	1091.29	436.86
6	GUIDE	577644856	8.79	2470	-0.027	-0.140	0.087	0.133	192.563814	73.683974	-1794.97	2310.17
7	GUIDE	577646344	9.10	2476	0.022	0.103	0.122	0.196	192.898042	72.523034	1168.30	-655.76

2.4 Star Slots

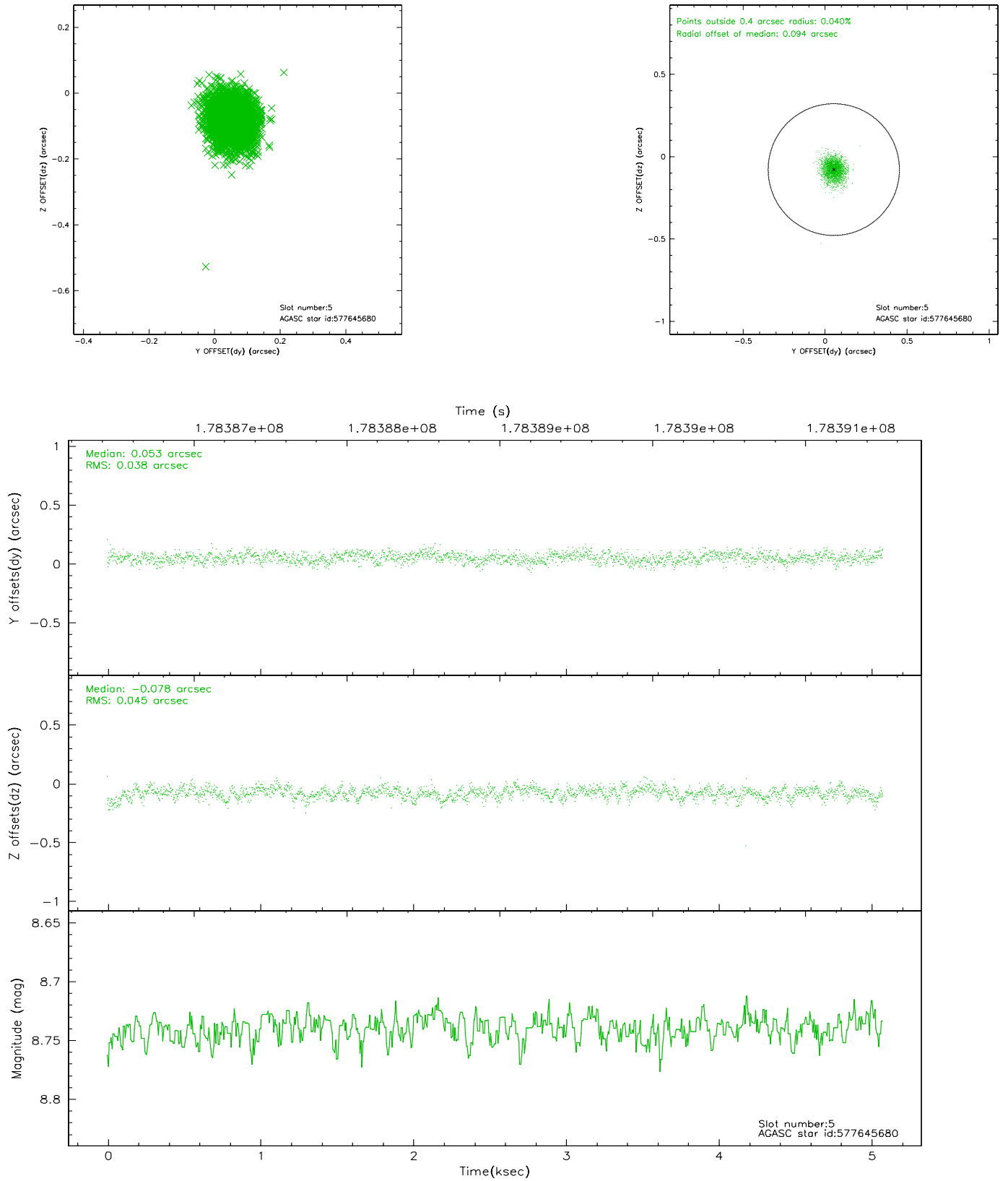
2.4.1 Slot 3



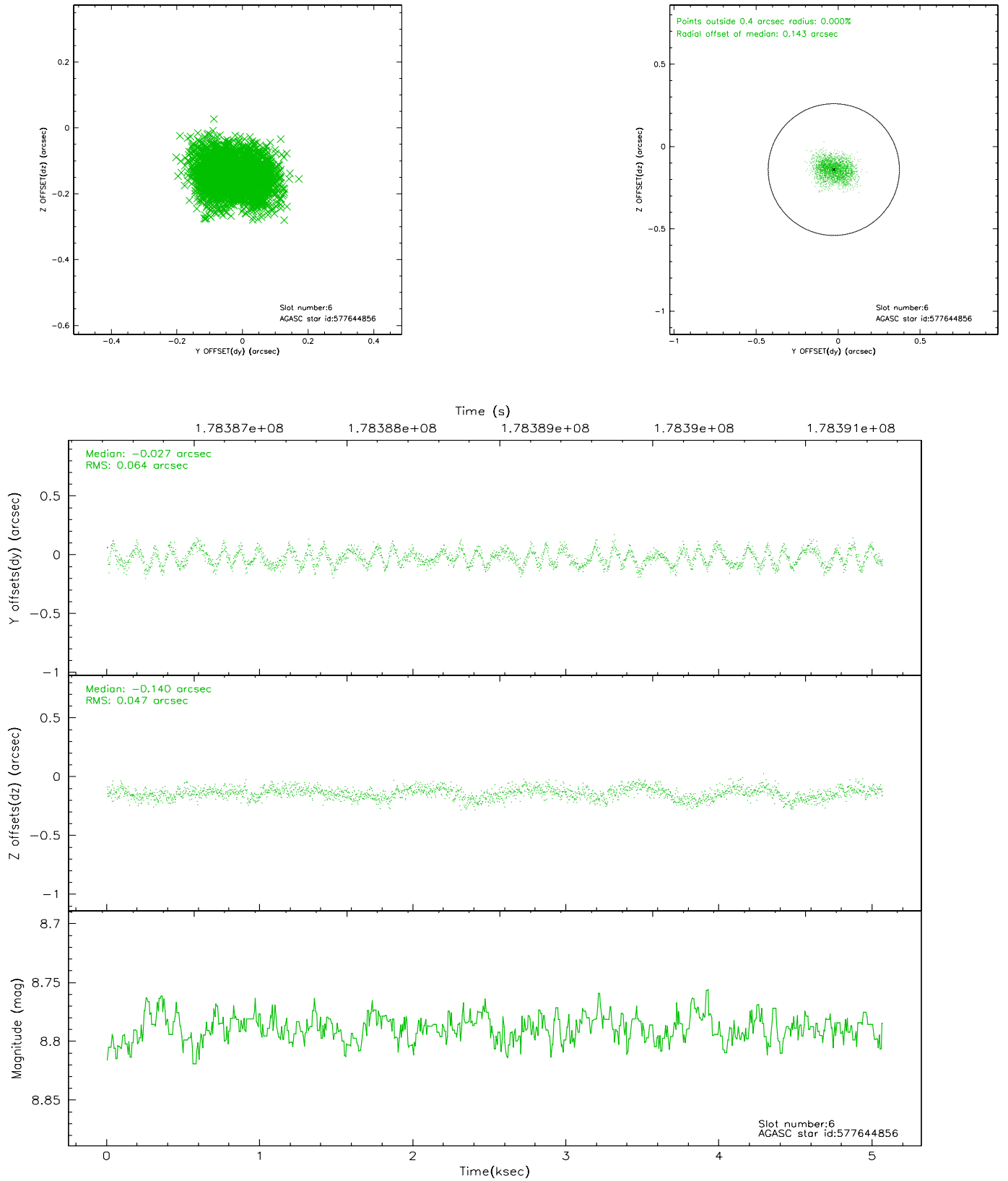
2.4.2 Slot 4



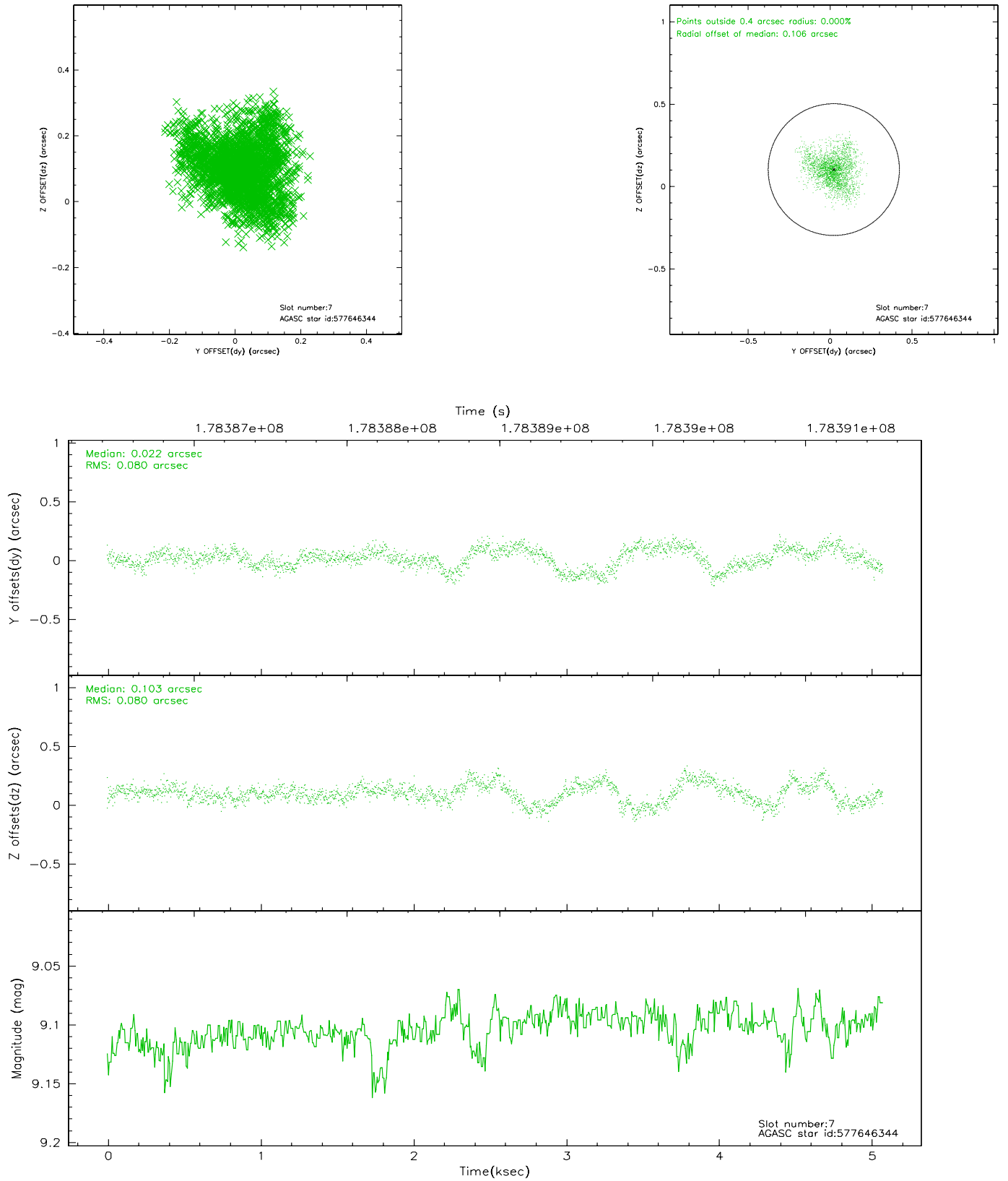
2.4.3 Slot 5



2.4.4 Slot 6

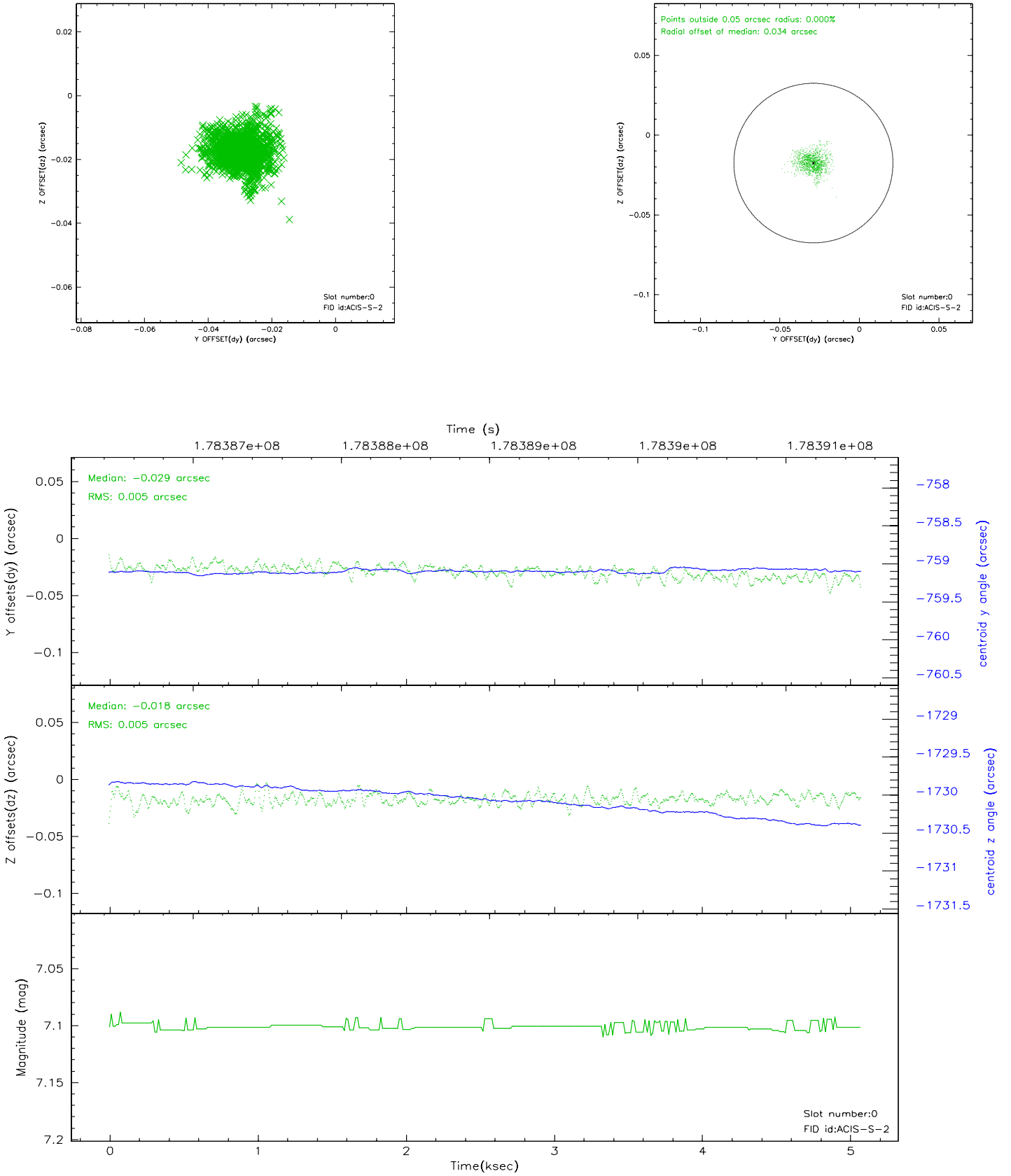


2.4.5 Slot 7

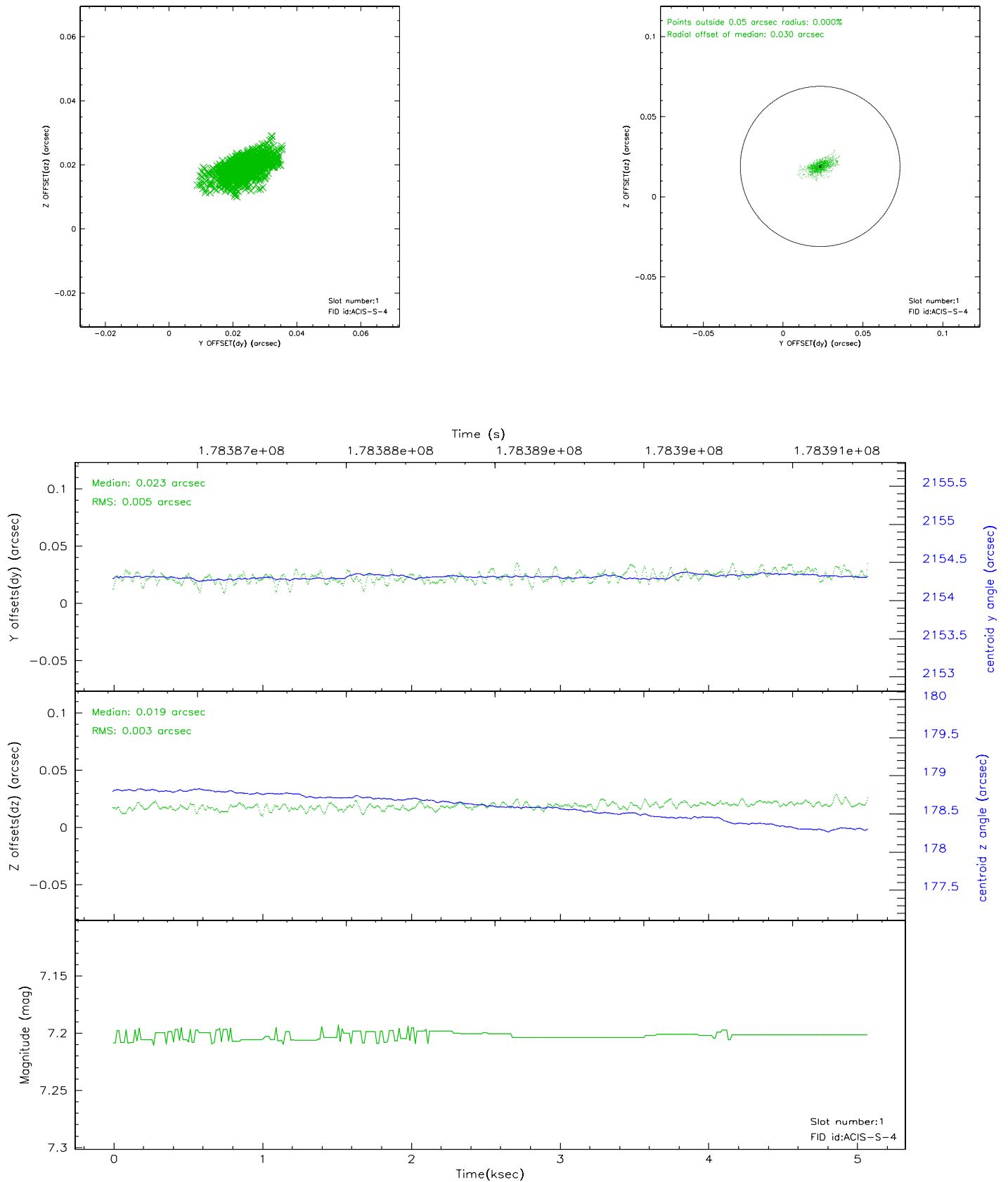


2.5 FID Slots

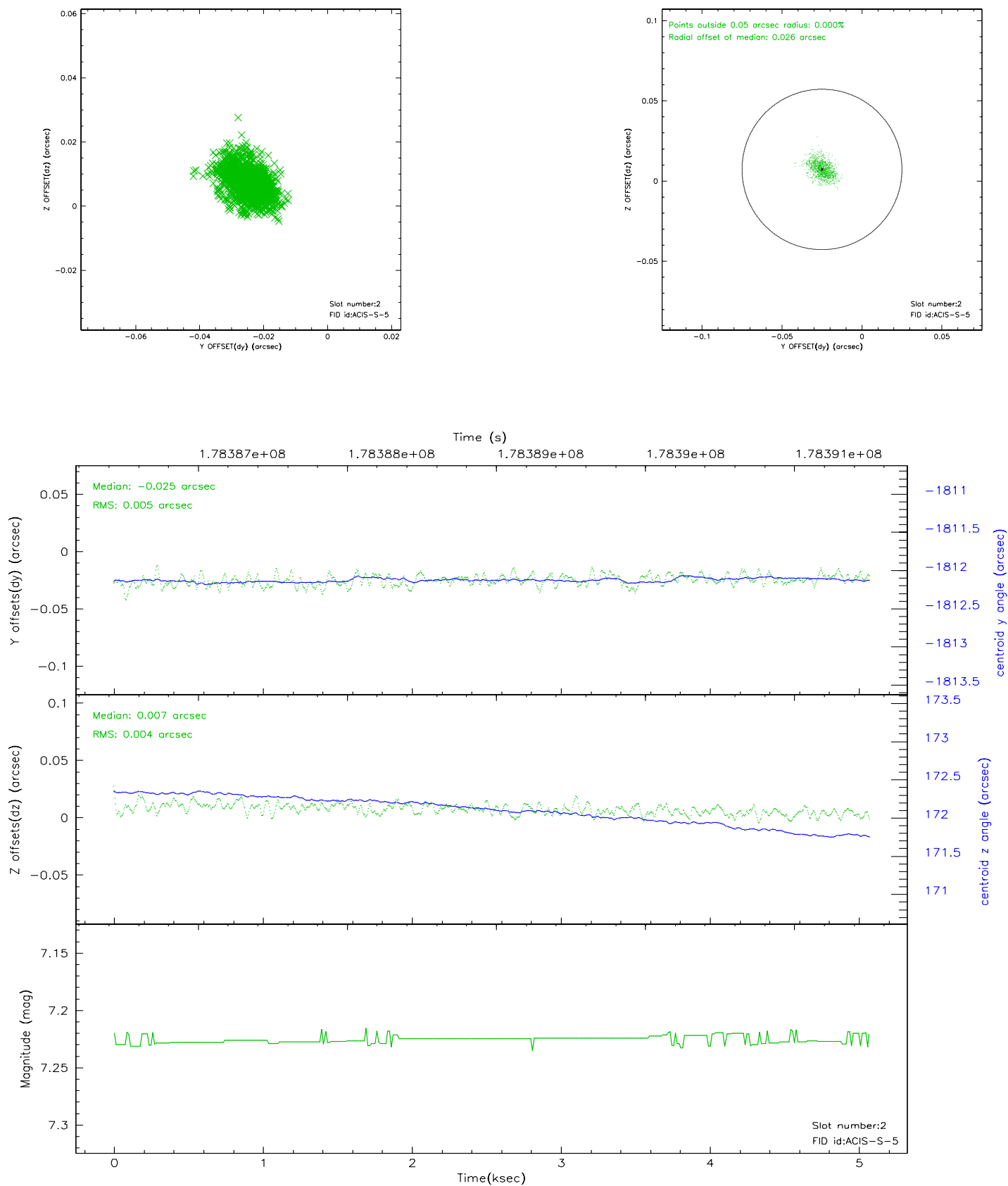
2.5.1 Slot 0



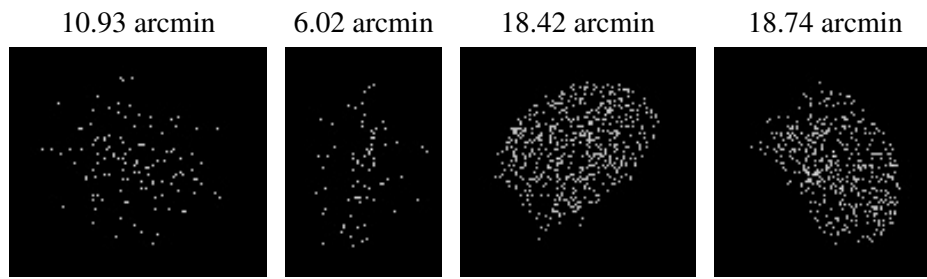
2.5.2 Slot 1



2.5.3 Slot 2



3 Point Sources



A Summary

A.1 Status

V&V Scientist	Jen Lauer
V&V Date (YYYY-MM-DD)	2006.07.07
V&V Edition	1
V&V Disposition and Status	OK
V&V Charge Time	4.998

A.2 Comments