

V&V Reference Report

L2 ASCDS Version : 7.6.8

Observation 4013 - L2 Version 001
Chandra X-Ray Center

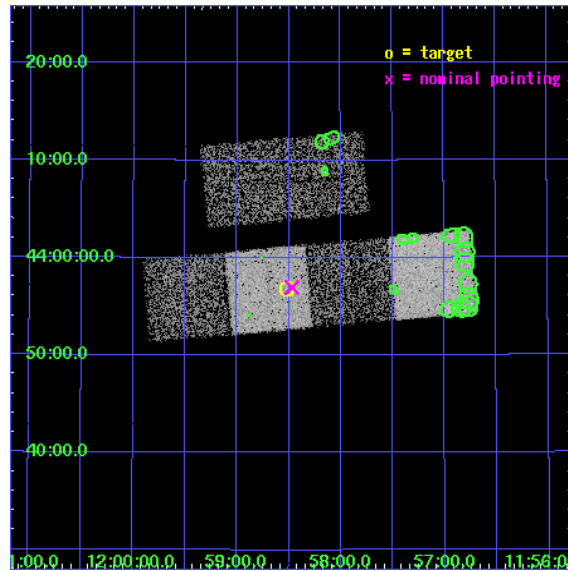
L2 Processing Date : Jul 24 2006

Contents

1	Front	2
2	OBI	3
2.1	OBI	3
2.1.1	Images	3
2.1.2	Bias	3
2.1.3	Parameters	4
2.1.4	Events	4
2.2	Compared Parameters	5
2.3	Aspect	6
2.4	Star Slots	9
2.4.1	Slot 3	9
2.4.2	Slot 4	10
2.4.3	Slot 5	11
2.4.4	Slot 6	12
2.4.5	Slot 7	13
2.5	FID Slots	14
2.5.1	Slot 0	14
2.5.2	Slot 1	15
2.5.3	Slot 2	16
3	Point Sources	17
A	Summary	18
A.1	Status	18
A.2	Comments	18

1 Front

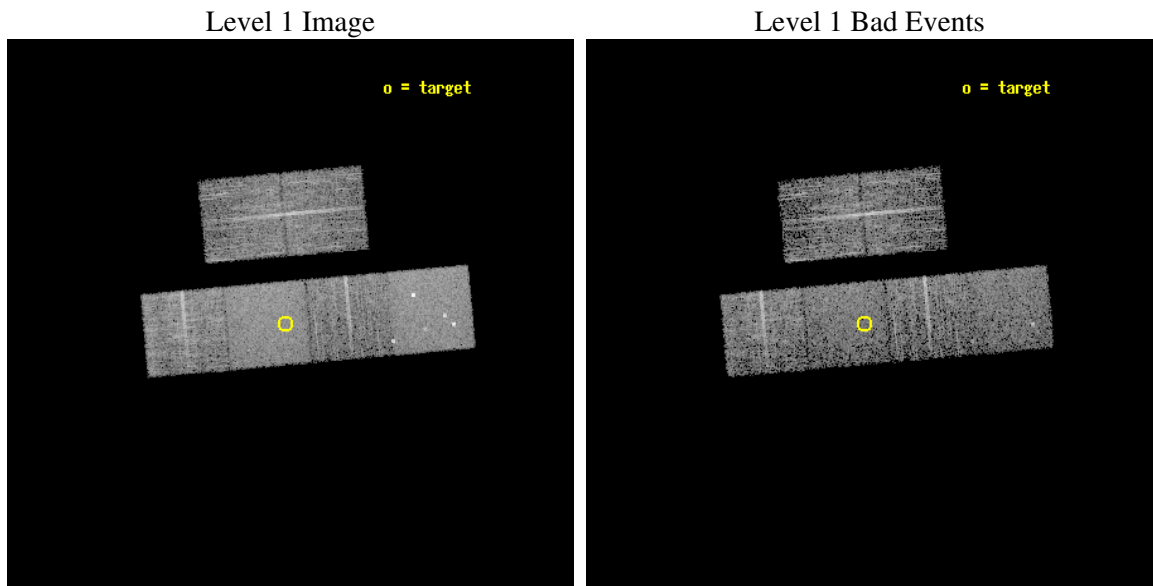
seq_num	700692
obs_id	4013
title	A CHANDRA SURVEY OF INFRARED-BRIGHT LINER GALAXIES
observer	Dr. Shobita Satyapal
object	NGC4013
dtcycle	0
cycle	P
ra_targ	179.630417
dec_targ	43.946944
ra_nom	179.61756009477
dec_nom	43.949402507653
roll_nom	174.83932823456
revision	3
ontime	4959.9999815226
livetime	4897.1934752031
ontime2	4959.9999815226
ontime3	4959.9999815226
ontime5	4959.9999815226
ontime6	4959.9999815226
ontime7	4959.9999815226
ontime8	4959.9999815226
l2events	47211



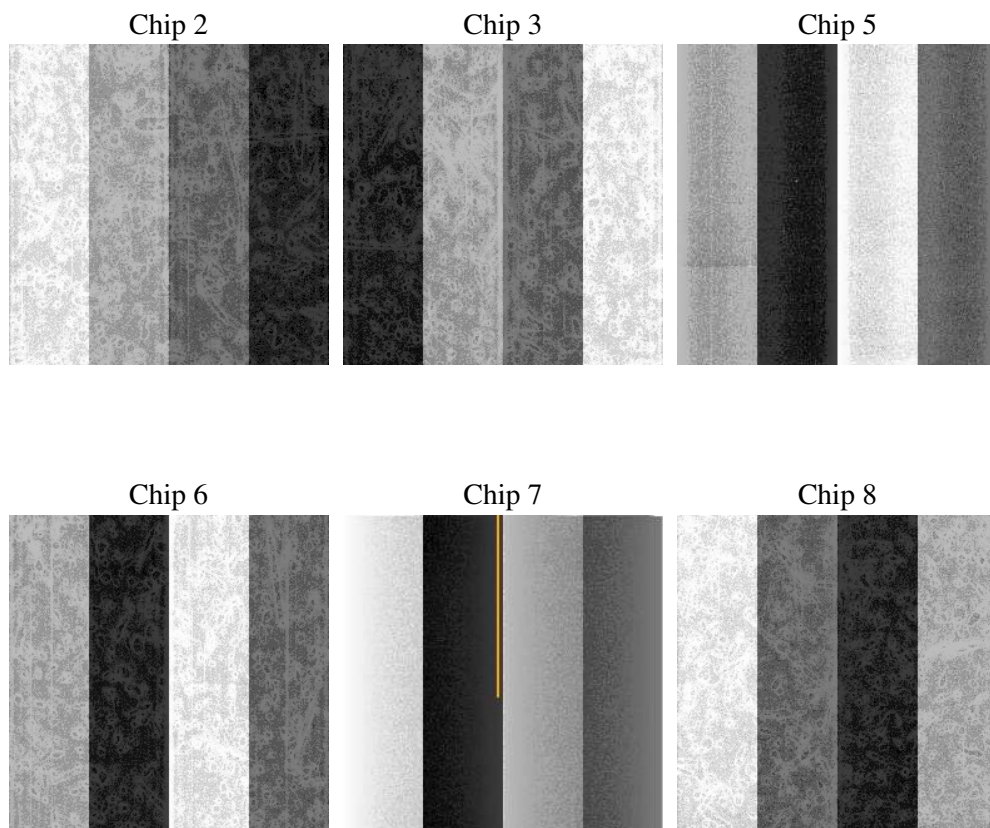
2 OBI

2.1 OBI

2.1.1 Images



2.1.2 Bias



2.1.3 Parameters

obi_num	0
ascdsver	7.6.8
caldsver	3.2.2
date	2006-07-24T20:15:14
revision	3

sched_exp_time	5000.000000
ontime	4965.2267794013
ontime2	4965.2267794013
ontime3	4965.2267794013
ontime5	4965.2267794013
ontime6	4965.2267794013
ontime7	4965.2267794013
ontime8	4965.2267794013
l1events	221930

2.1.4 Events

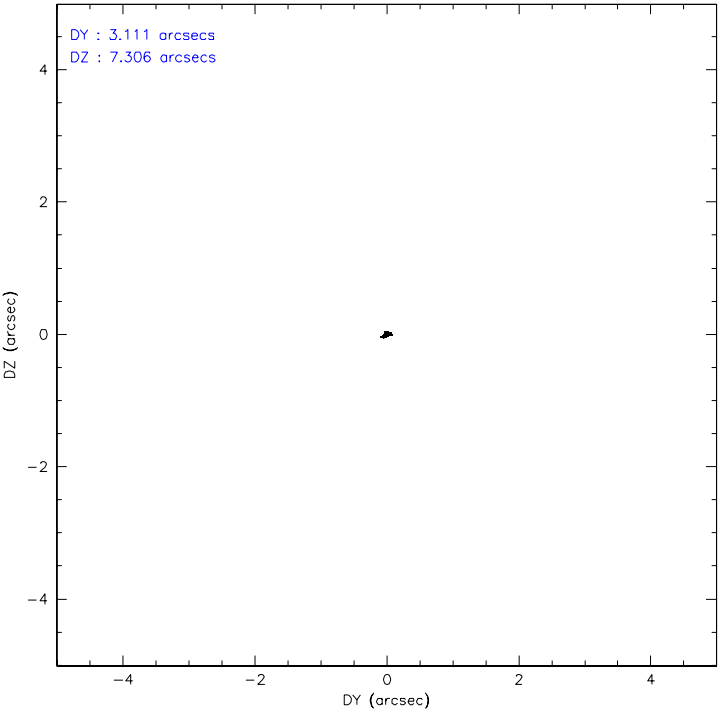
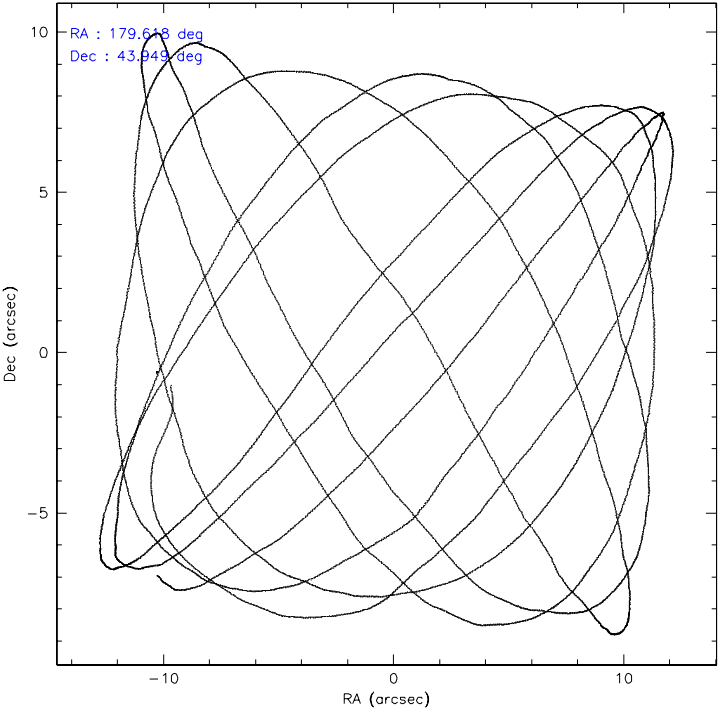
	ccd 2	ccd 3	ccd 5	ccd 6	ccd 7	ccd 8
level 1 events	31322	31428	47388	31288	41390	39114
rejected events	27614	27860	25287	27764	25572	30993
rejected %	88%	88%	53%	88%	61%	79%

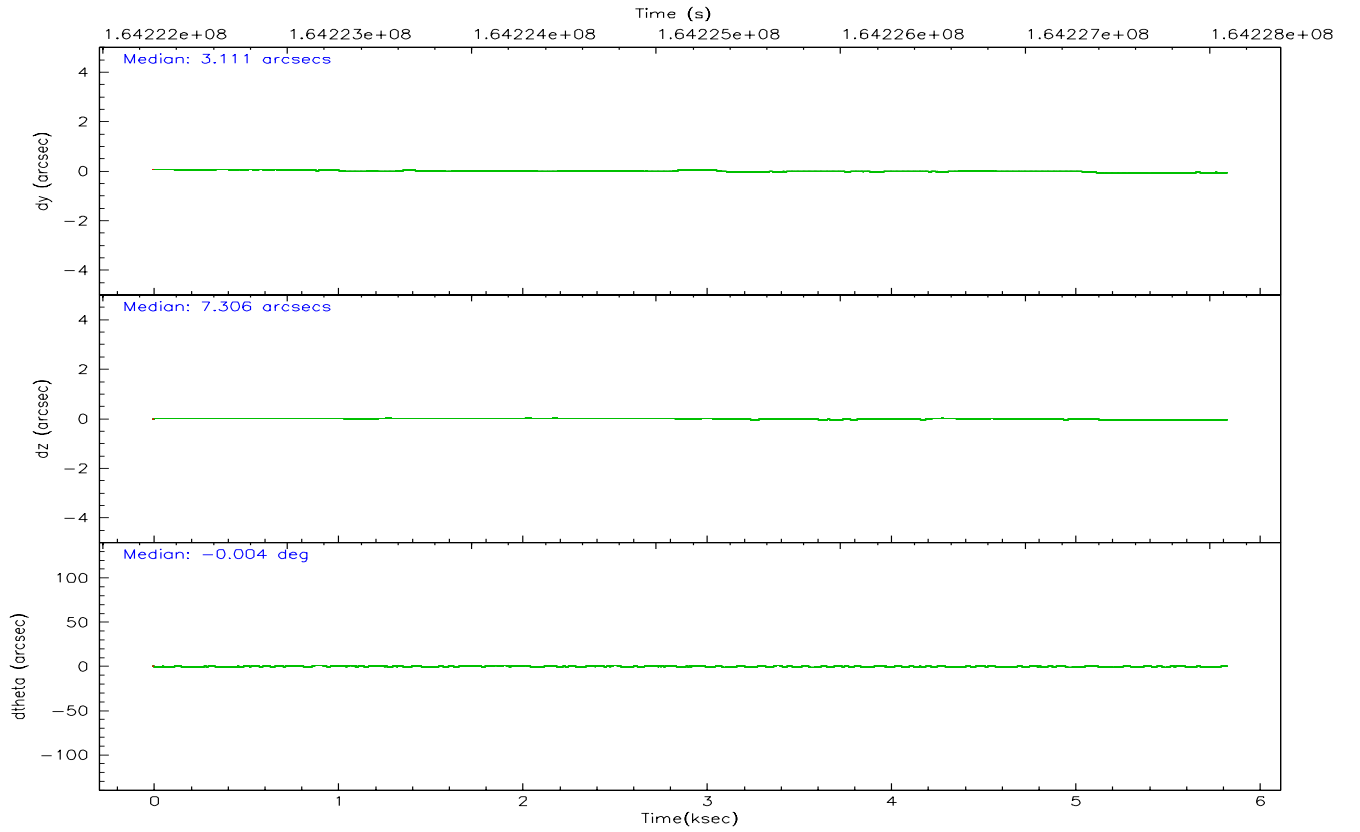
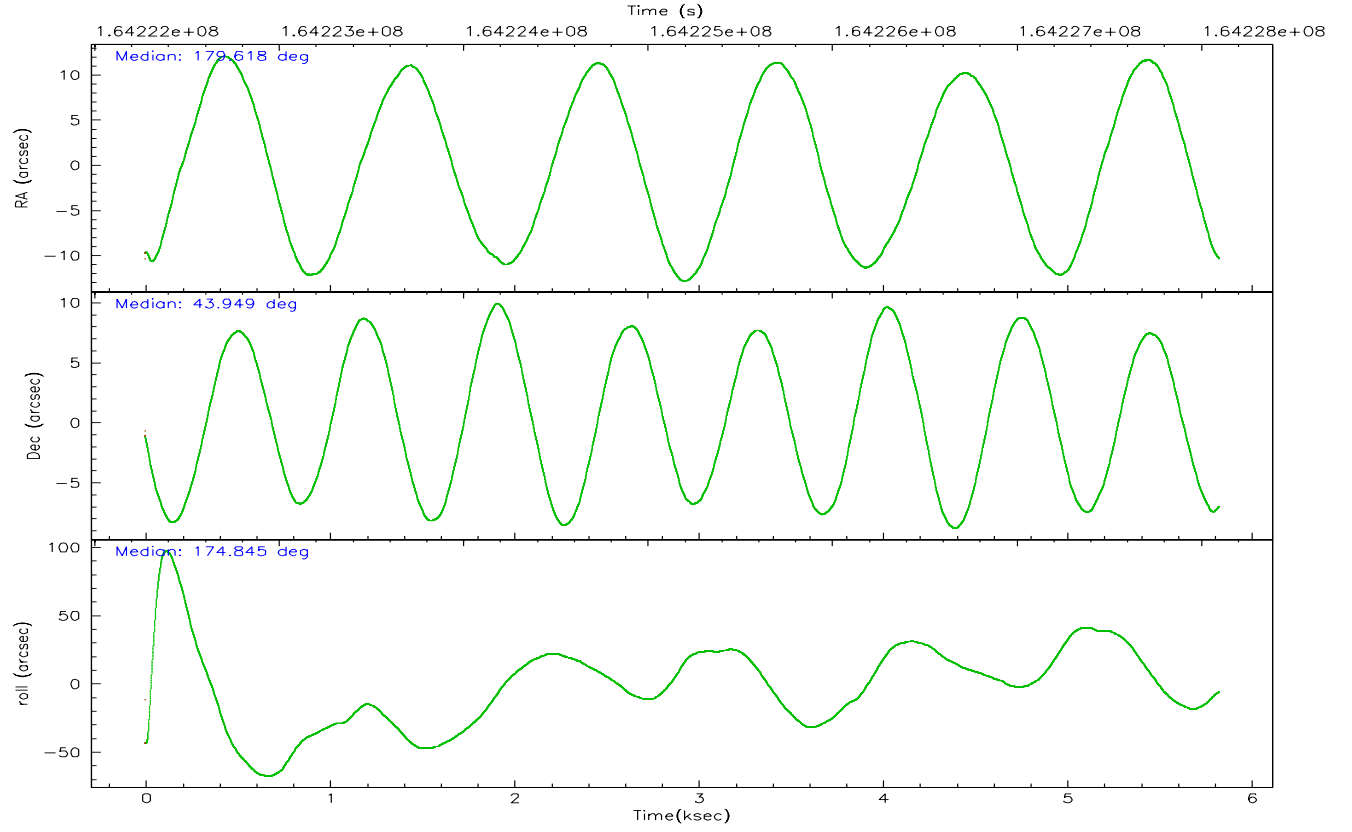
	ccd 2	ccd 3	ccd 5	ccd 6	ccd 7	ccd 8
grade 0 events	1699	1548	3425	1416	957	2463
	5%	4%	7%	4%	2%	6%
grade 1 events	19	16	326	16	30	18
	0%	0%	0%	0%	0%	0%
grade 2 events	725	678	6154	733	3908	1857
	2%	2%	12%	2%	9%	4%
grade 3 events	352	383	467	351	789	883
	1%	1%	0%	1%	1%	2%
grade 4 events	343	358	453	351	791	836
	1%	1%	0%	1%	1%	2%
grade 5 events	1153	1366	2204	1444	2851	1845
	3%	4%	4%	4%	6%	4%
grade 6 events	593	603	11612	674	9388	2116
	1%	1%	24%	2%	22%	5%
grade 7 events	26438	26476	22747	26303	22676	29096
	84%	84%	48%	84%	54%	74%

2.2 Compared Parameters

Parameter	Planned	Actual	Parameter	Planned	Actual
Instrument	ACIS	ACIS	Obspar format version number	6	6
Detector	ACIS-235678	ACIS-235678	Obspar file type	PREDICTED	ACTUAL
Grating	NONE	NONE	Obspar update status	NONE	UPDATED
Data mode	FAINT	FAINT	On-chip summing requested	N	N
Observation mode	POINTING	POINTING	Subarray requested	NONE	NONE
Pointing RA	179.651572	179.6175600947656	Alternating exposures requested	N	N
Pointing Dec	43.961258	43.94940250765259	Primary exposure time	0.000000	3.2
Pointing Roll	174.659386	174.8393282345645			
SIM focus pos (mm)	-0.684267	-0.6828225247311905			
SIM defocus (mm)	0	0.001444936568705701			
SIM translation stage pos (mm)	-190.132523	-190.1400660498719			
SIM translation stage offset (mm)	0	0.00754346686406393			
Observation start time	164223093.184000	164221809.41319			
Observation start date	2003-03-16T17:30:29	2003-03-16T17:10:09			
Observation end time	164228093.184000	164228535.46347			
Observation end date	2003-03-16T18:53:49	2003-03-16T19:02:15			
Read mode	TIMED	TIMED			

2.3 Aspect



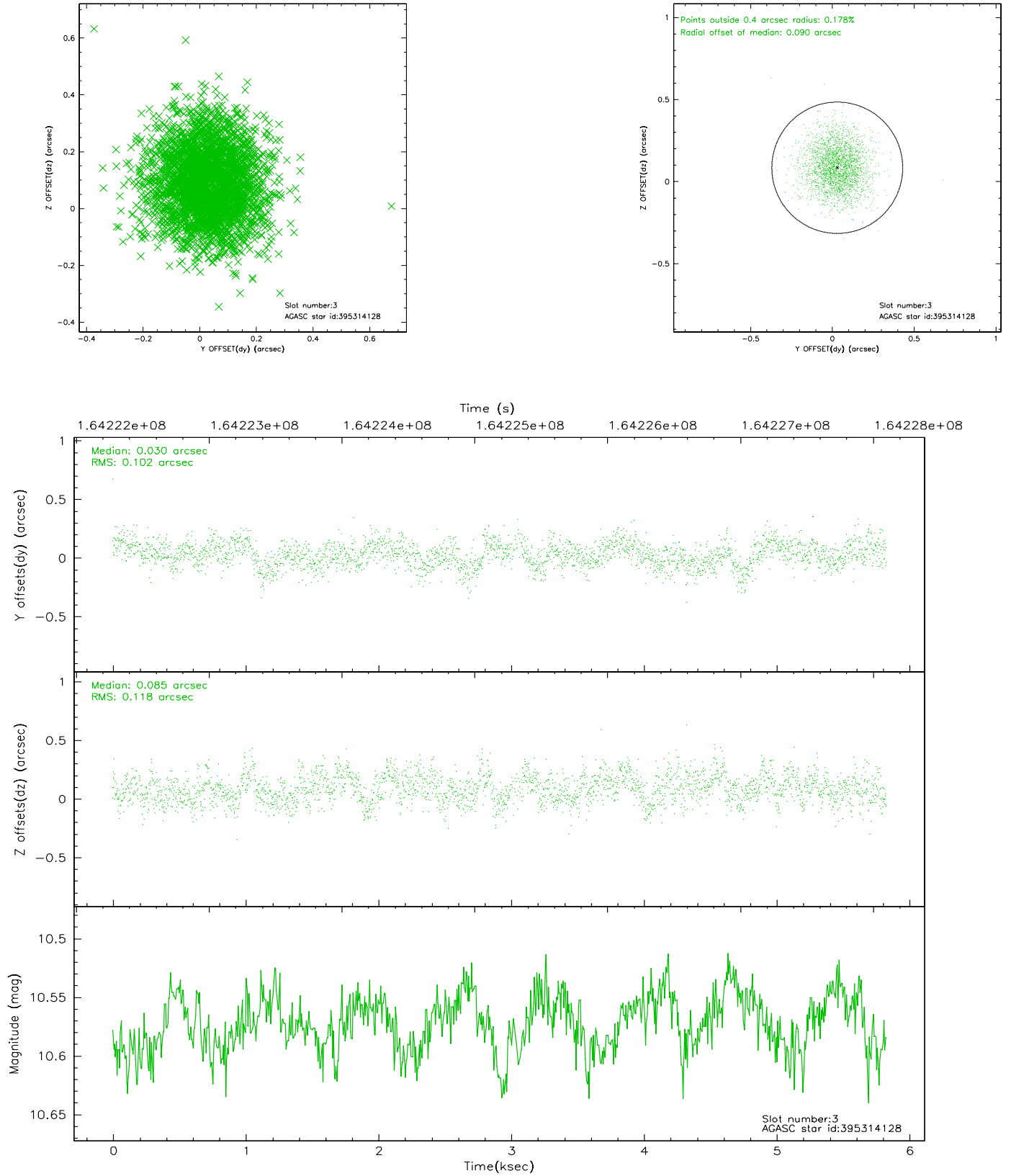


Slot Statistics

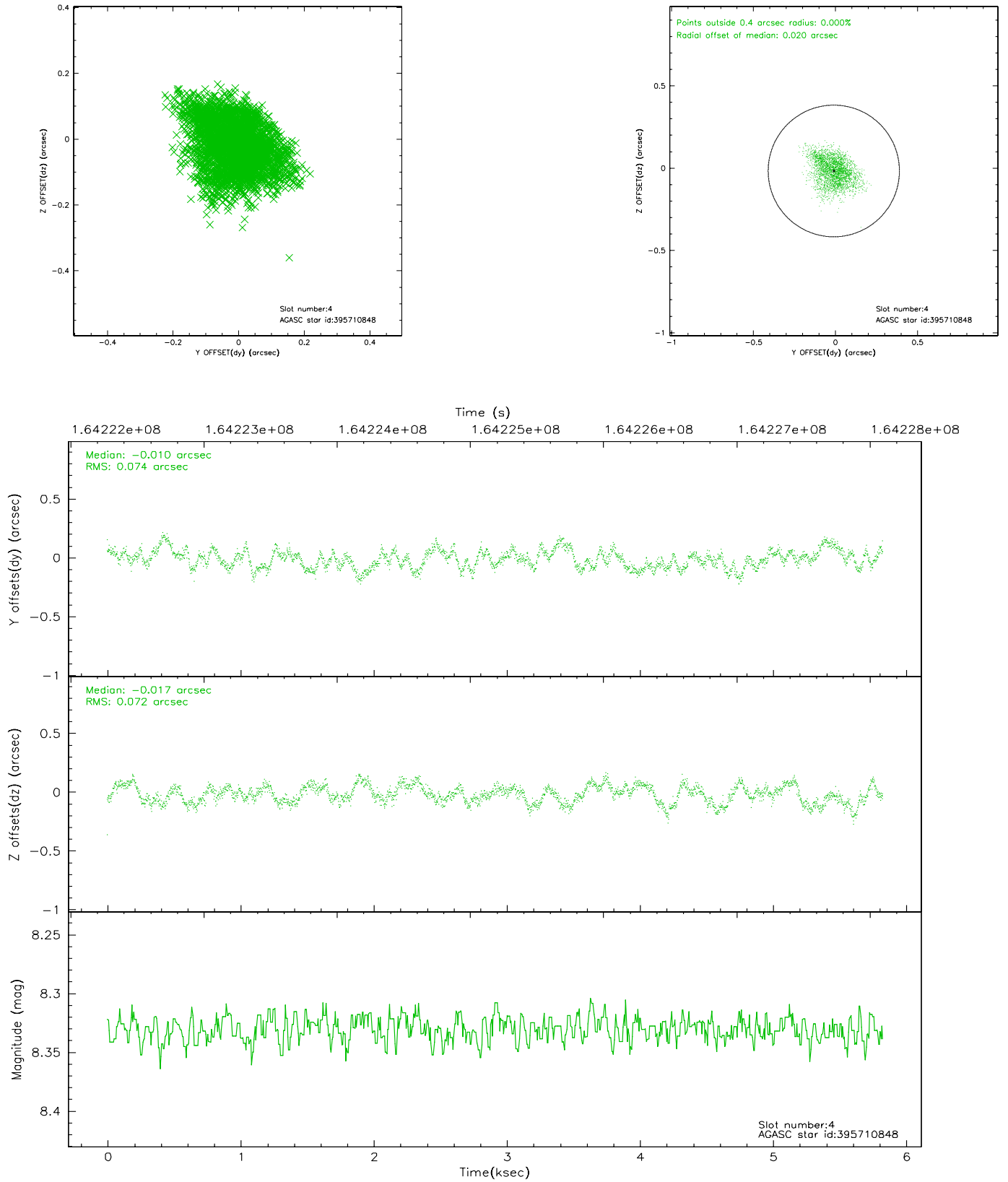
slot	status	id	mag	n_pts	med_dy	med_dz	dr1	dr2	ra	dec	mean_y	mean_z
0	FID	ACIS-S-2	7.12	1422	-0.013	0.012	0.007	0.012	0.000000	0.000000	-755.76	-1728.46
1	FID	ACIS-S-4	7.21	1422	-0.024	0.003	0.005	0.009	0.000000	0.000000	2157.04	178.96
2	FID	ACIS-S-5	7.24	1422	0.006	-0.007	0.006	0.010	0.000000	0.000000	-1807.28	173.78
3	GUIDE	395314128	10.57	2812	0.030	0.085	0.165	0.267	179.932644	44.337927	-594.17	-1418.64
4	GUIDE	395710848	8.33	2843	-0.010	-0.017	0.111	0.175	180.004806	43.343617	-1127.50	2125.26
5	GUIDE	395711672	10.87	2771	-0.106	-0.027	0.345	0.545	180.159452	43.918124	-1325.56	28.62
6	GUIDE	395716408	10.65	2766	0.064	-0.023	0.260	0.405	180.353934	43.509216	-1976.61	1441.95
7	GUIDE	395722432	9.54	2841	0.026	-0.014	0.124	0.200	180.355077	43.582106	-1953.45	1181.13

2.4 Star Slots

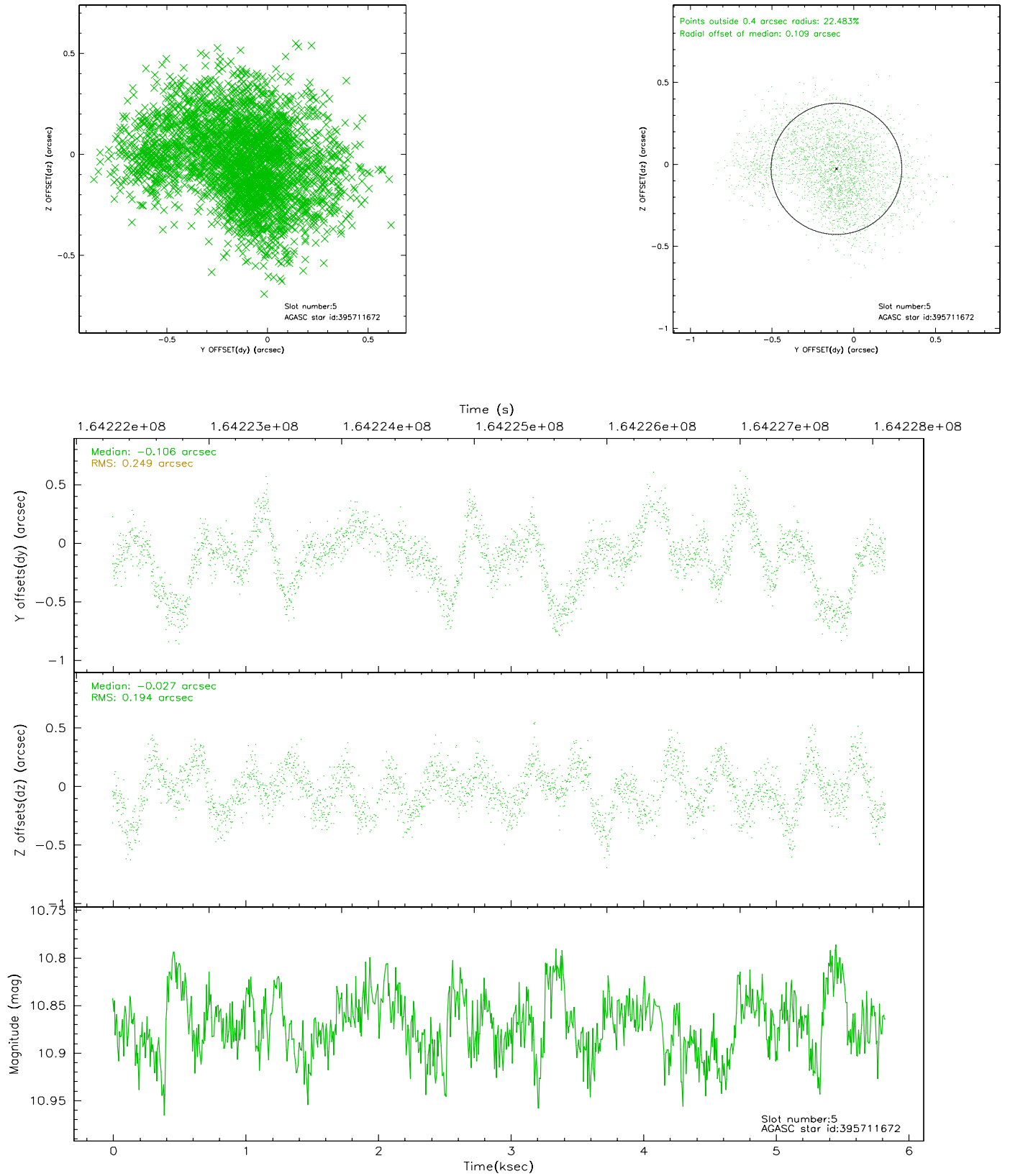
2.4.1 Slot 3



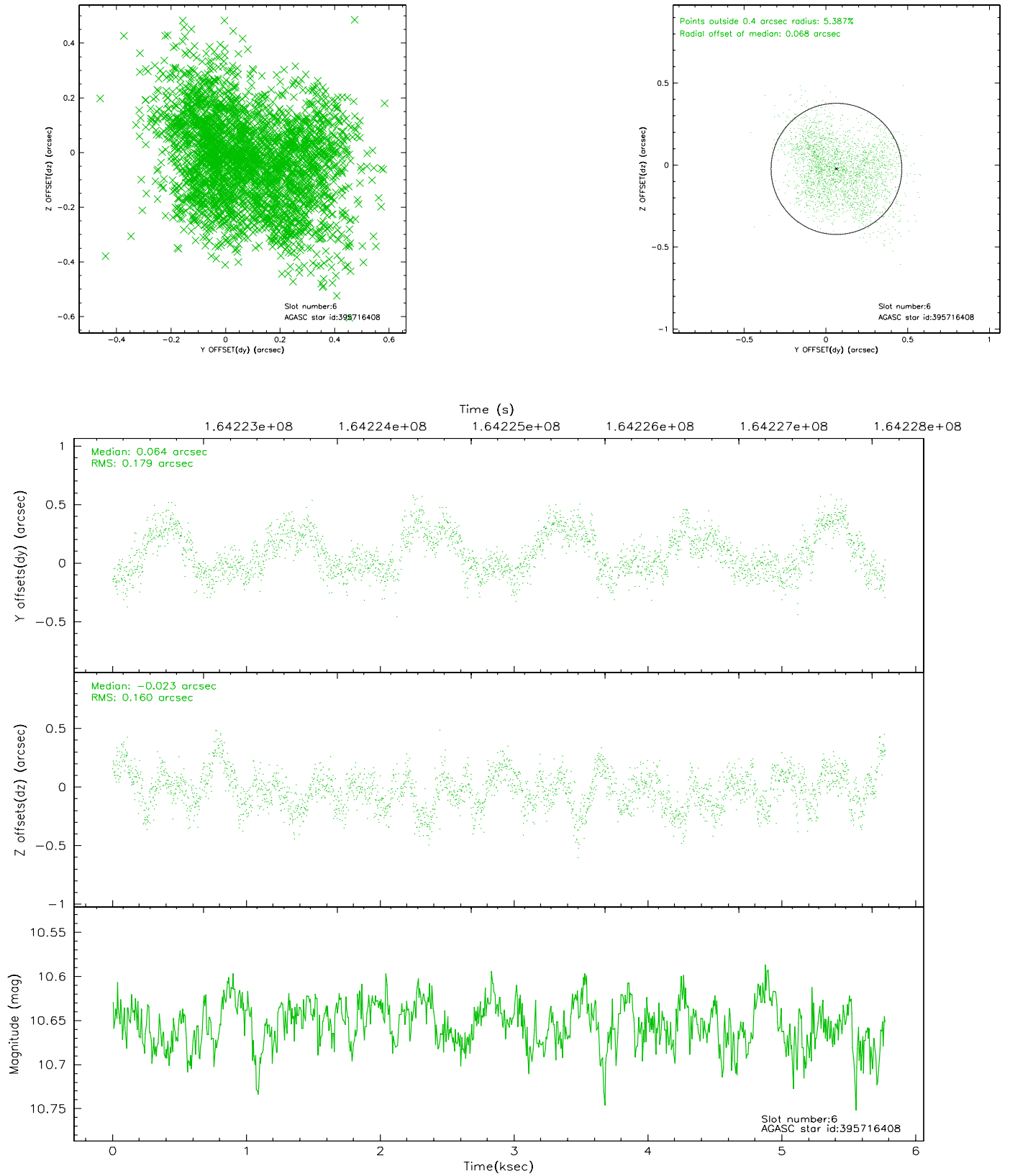
2.4.2 Slot 4



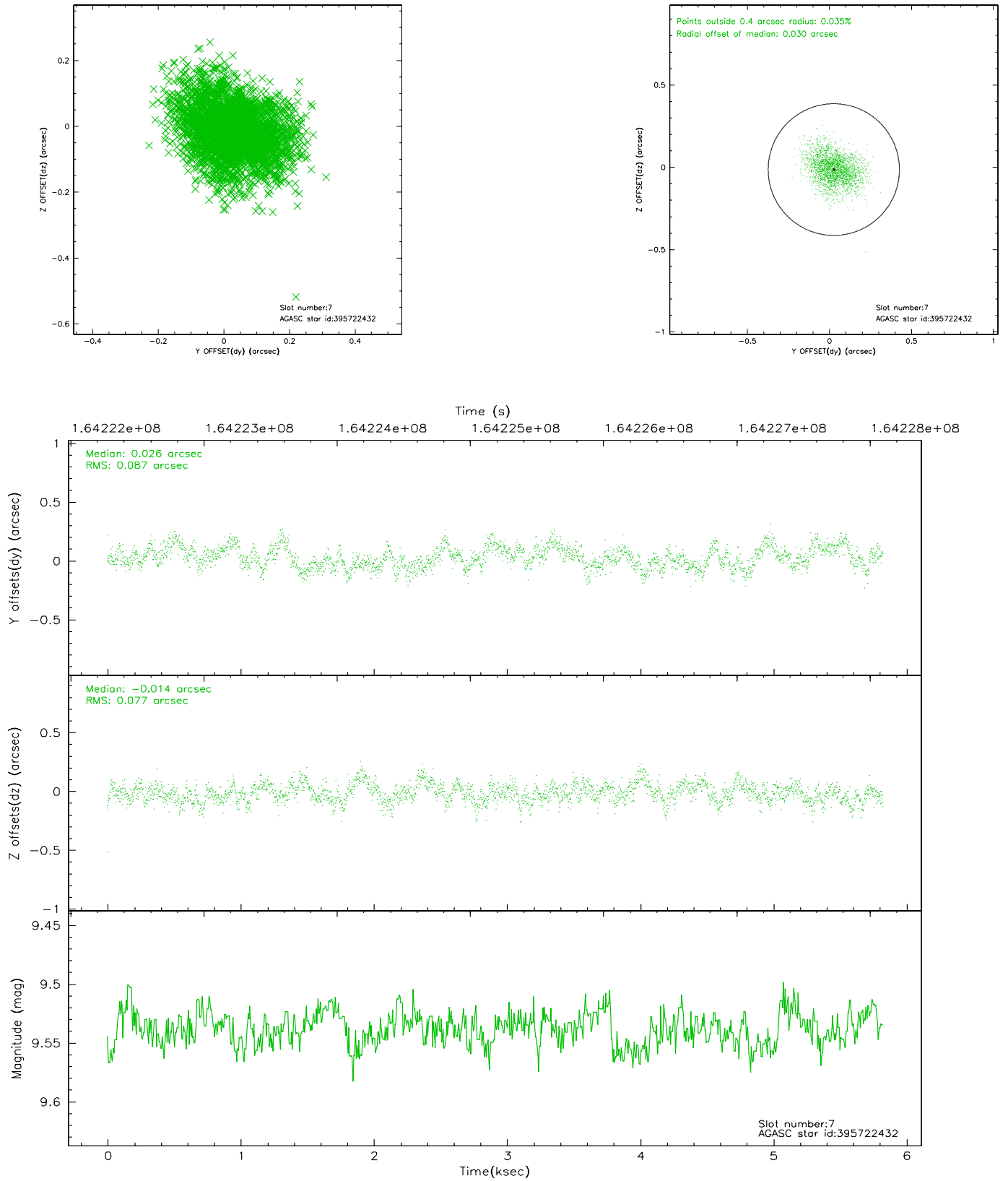
2.4.3 Slot 5



2.4.4 Slot 6

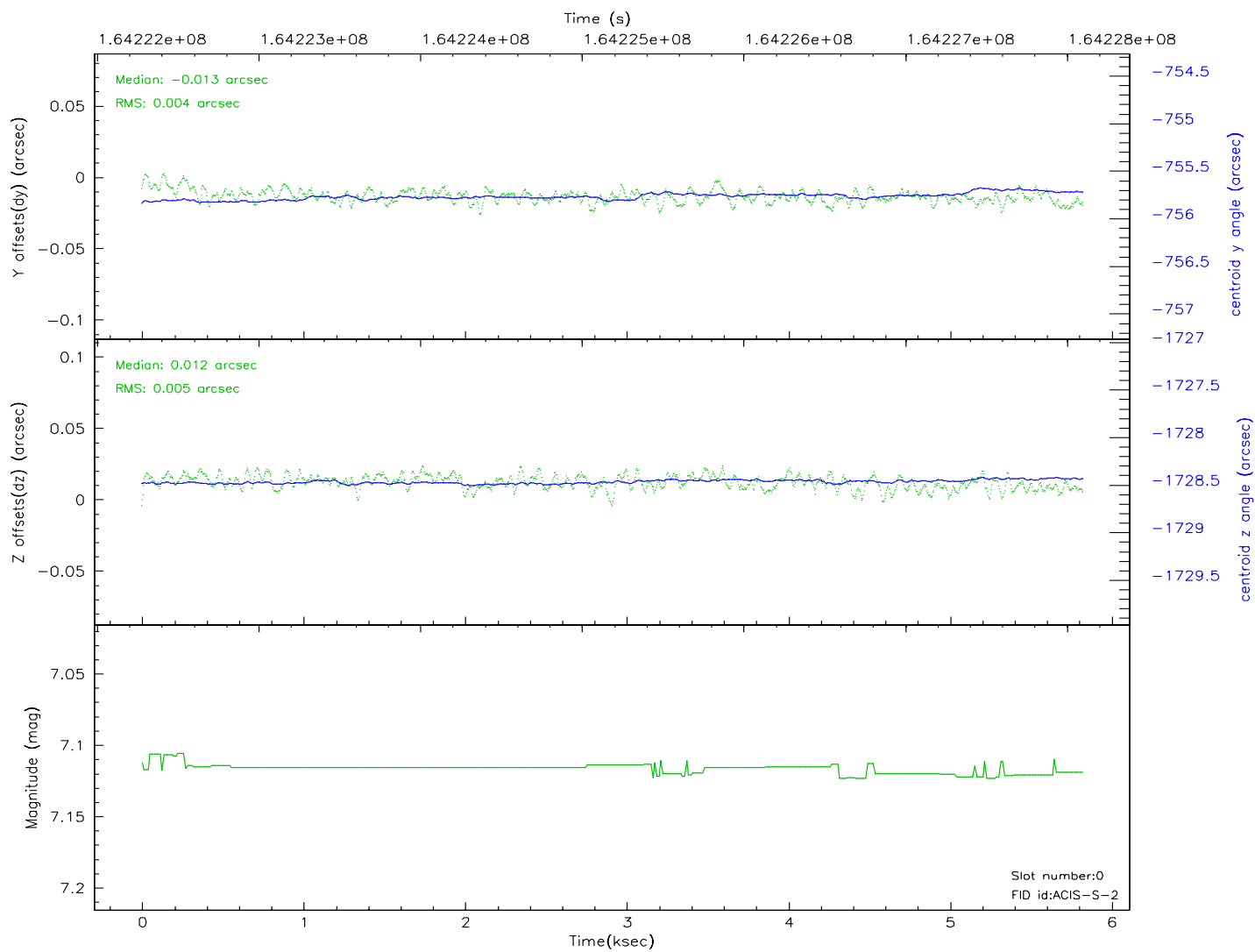
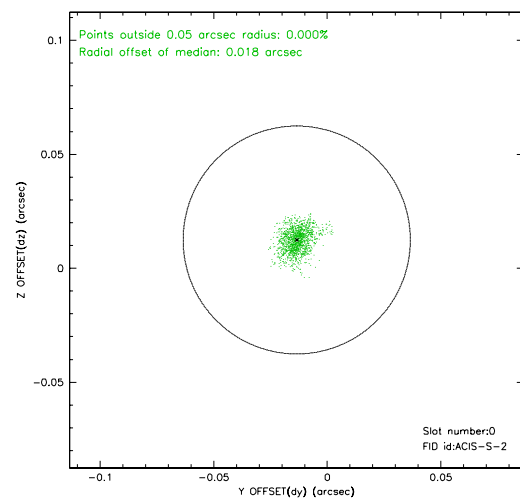
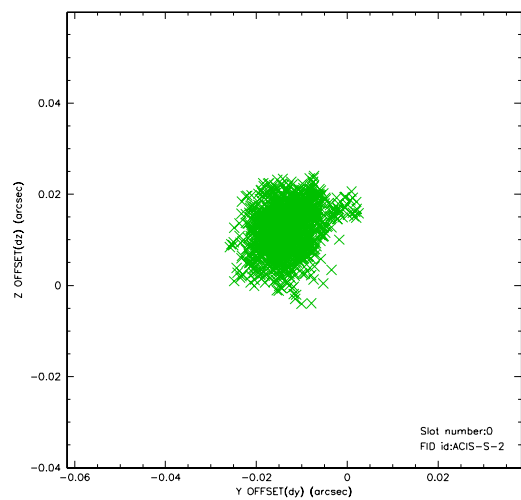


2.4.5 Slot 7

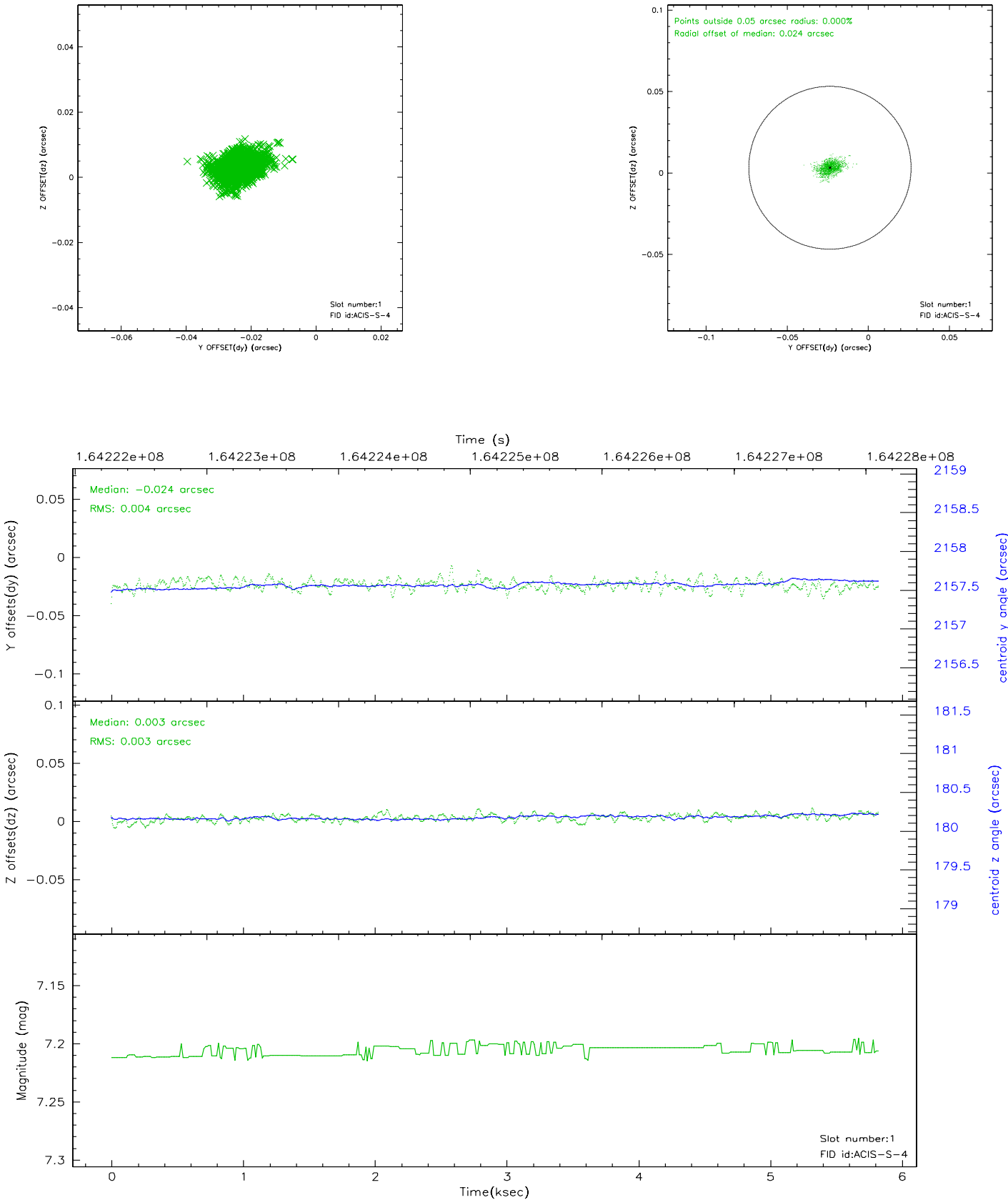


2.5 FID Slots

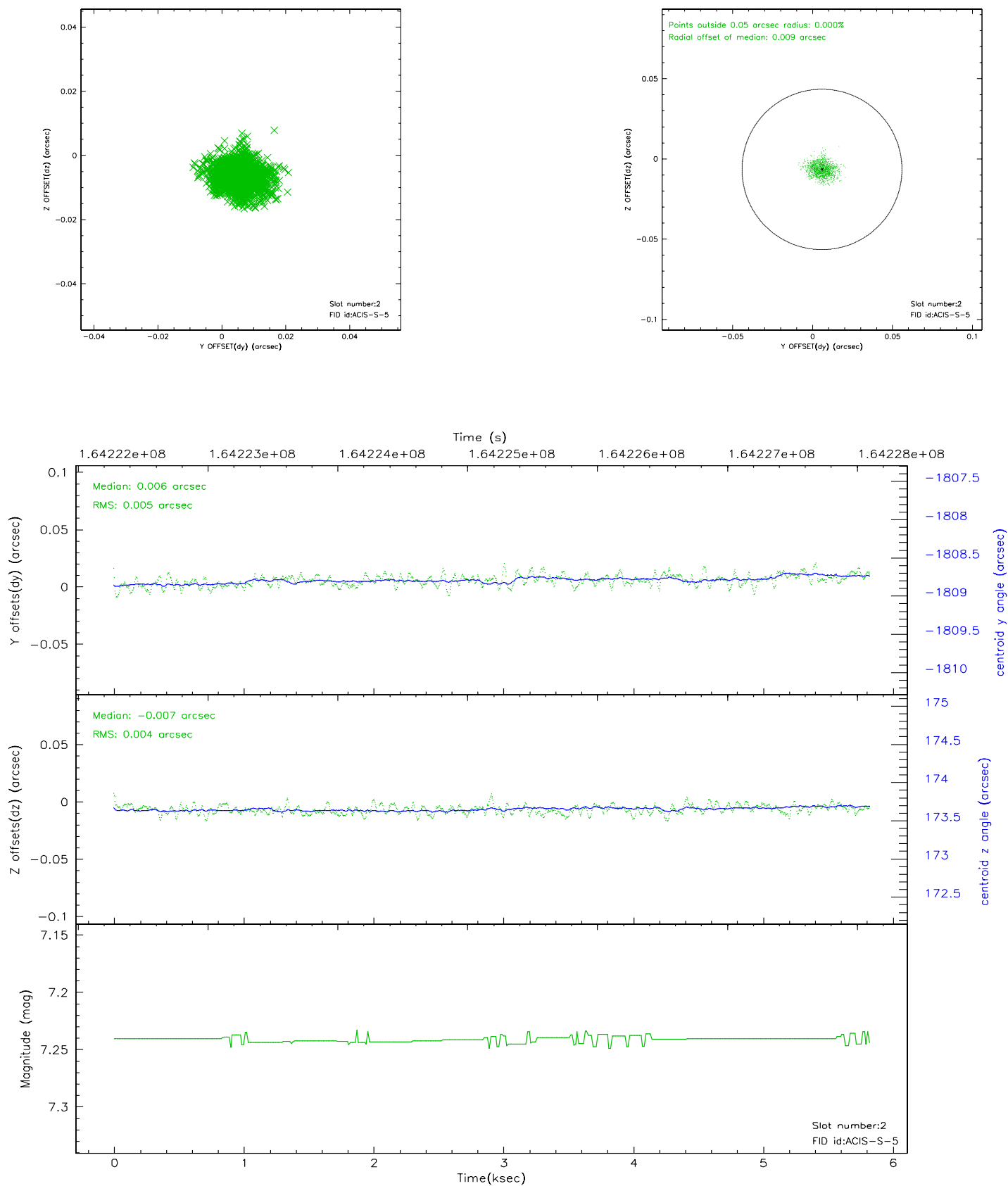
2.5.1 Slot 0



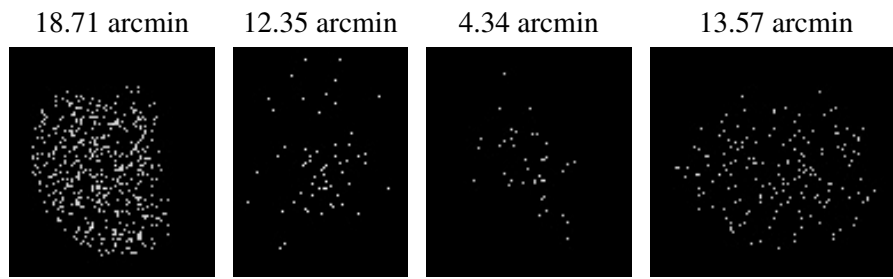
2.5.2 Slot 1



2.5.3 Slot 2



3 Point Sources



A Summary

A.1 Status

V&V Scientist	Jen Lauer
V&V Date (YYYY-MM-DD)	2006.07.25
V&V Edition	1
V&V Disposition and Status	OK
V&V Charge Time	4.96

A.2 Comments