

V&V Reference Report

L2 ASCDS Version : 7.6.8

Observation 4011 - L2 Version 001
Chandra X-Ray Center

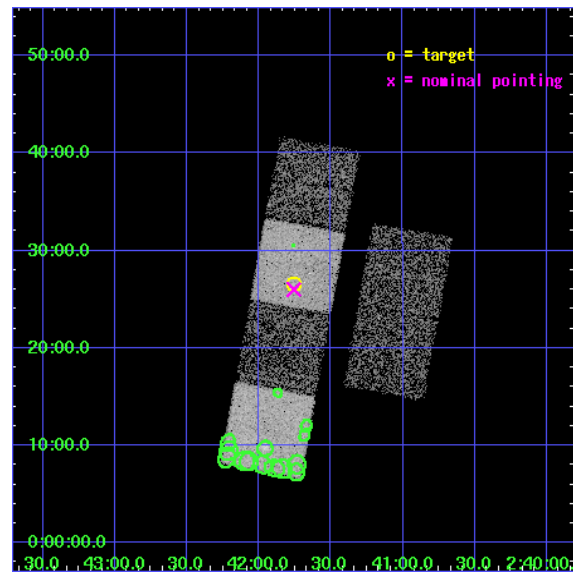
L2 Processing Date : Jul 28 2006

Contents

1	Front	2
2	OBI	3
2.1	OBI	3
2.1.1	Images	3
2.1.2	Bias	3
2.1.3	Parameters	4
2.1.4	Events	4
2.2	Compared Parameters	5
2.3	Aspect	6
2.4	Star Slots	9
2.4.1	Slot 3	9
2.4.2	Slot 4	10
2.4.3	Slot 5	11
2.4.4	Slot 6	12
2.4.5	Slot 7	13
2.5	FID Slots	14
2.5.1	Slot 0	14
2.5.2	Slot 1	15
2.5.3	Slot 2	16
3	Point Sources	17
A	Summary	18
A.1	Status	18
A.2	Comments	18

1 Front

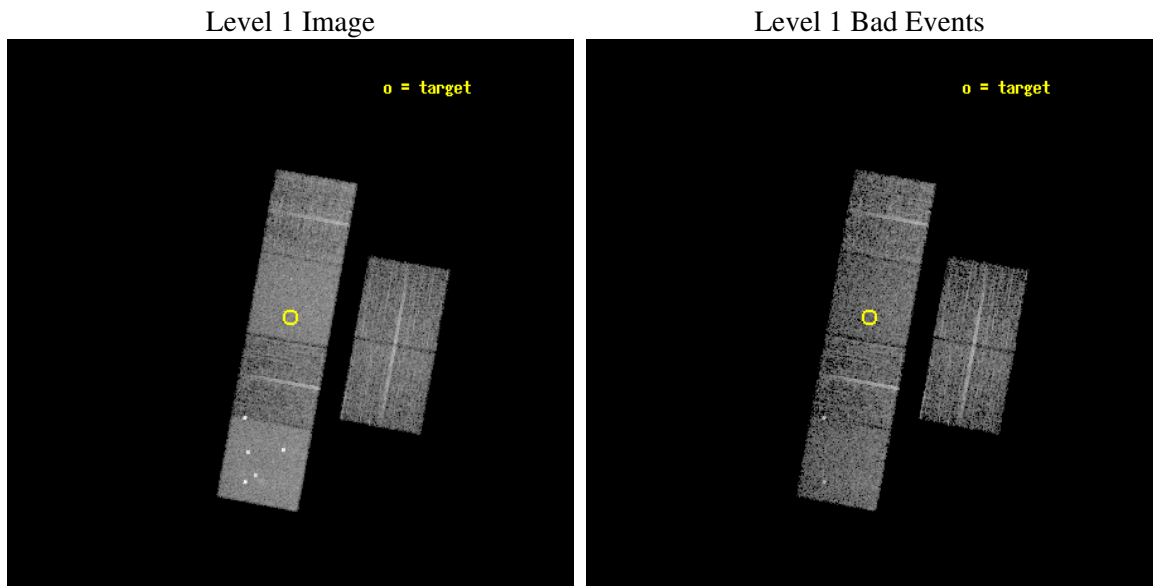
seq_num	700690
obs_id	4011
title	A CHANDRA SURVEY OF INFRARED-BRIGHT LINER GALAXIES
observer	Dr. Shobita Satyapal
object	NGC1055
dtcycle	0
cycle	P
ra_targ	40.439167
dec_targ	0.443056
ra_nom	40.439214833134
dec_nom	0.43340199382367
roll_nom	280.398869741
revision	2
ontime	5097.59998101
livetime	5033.0511006442
ontime2	5097.59998101
ontime3	5097.59998101
ontime5	5097.59998101
ontime6	5097.59998101
ontime7	5097.59998101
ontime8	5097.59998101
l2events	58908



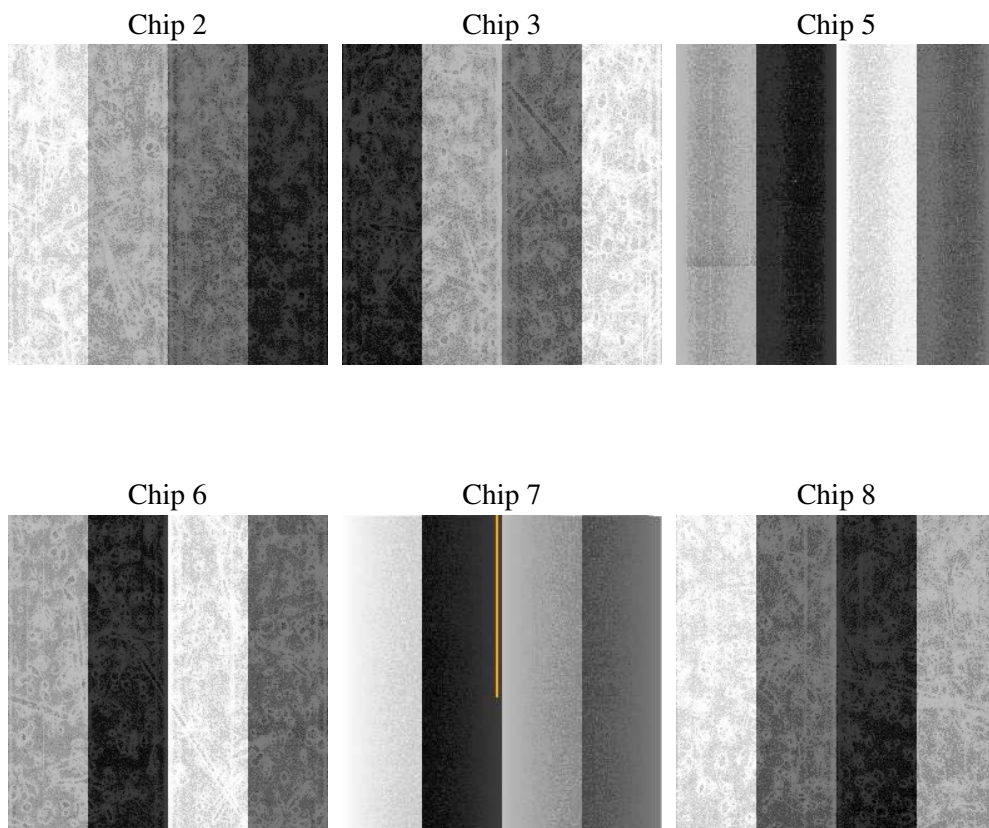
2 OBI

2.1 OBI

2.1.1 Images



2.1.2 Bias



2.1.3 Parameters

obi_num	0
ascdsver	7.6.8
caldsver	3.2.2
date	2006-07-28T03:28:13
revision	2

sched_exp_time	4947.896000
ontime	5321.7300038636
ontime2	5321.7299839556
ontime3	5324.9709940255
ontime5	5321.7300038636
ontime6	5324.9709940255
ontime7	5321.7300038636
ontime8	5324.9709940255
l1events	254599

2.1.4 Events

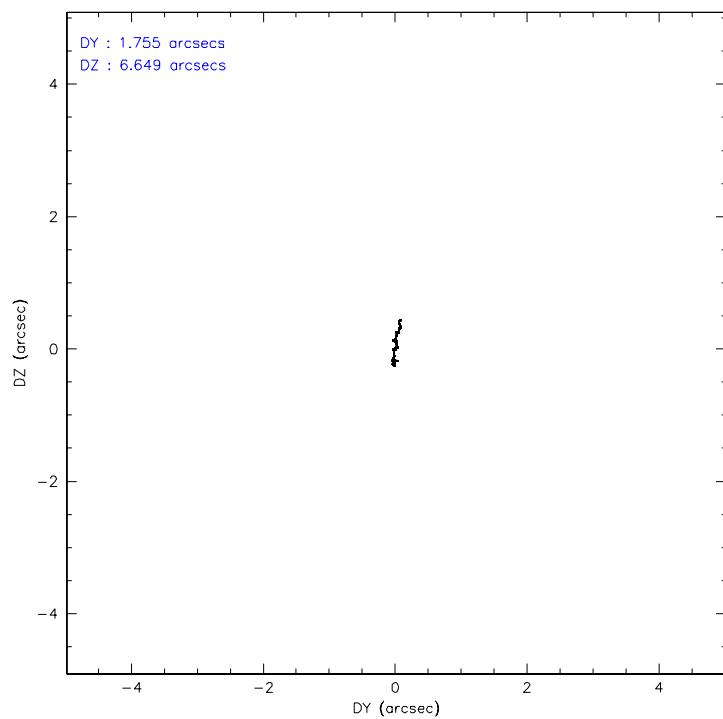
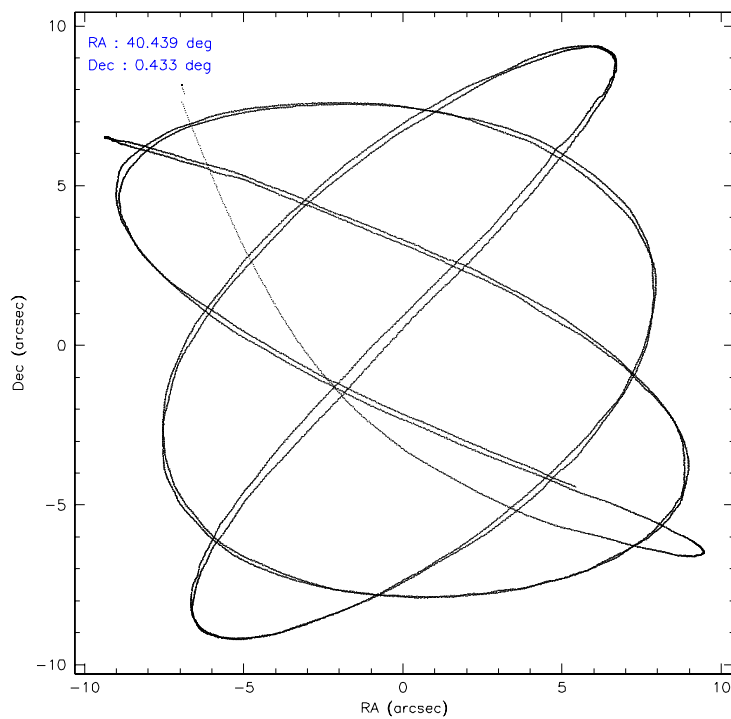
	ccd 2	ccd 3	ccd 5	ccd 6	ccd 7	ccd 8
level 1 events	34457	33358	60633	32960	49953	43238
rejected events	30678	29662	29723	29012	28993	34164
rejected %	89%	88%	49%	88%	58%	79%

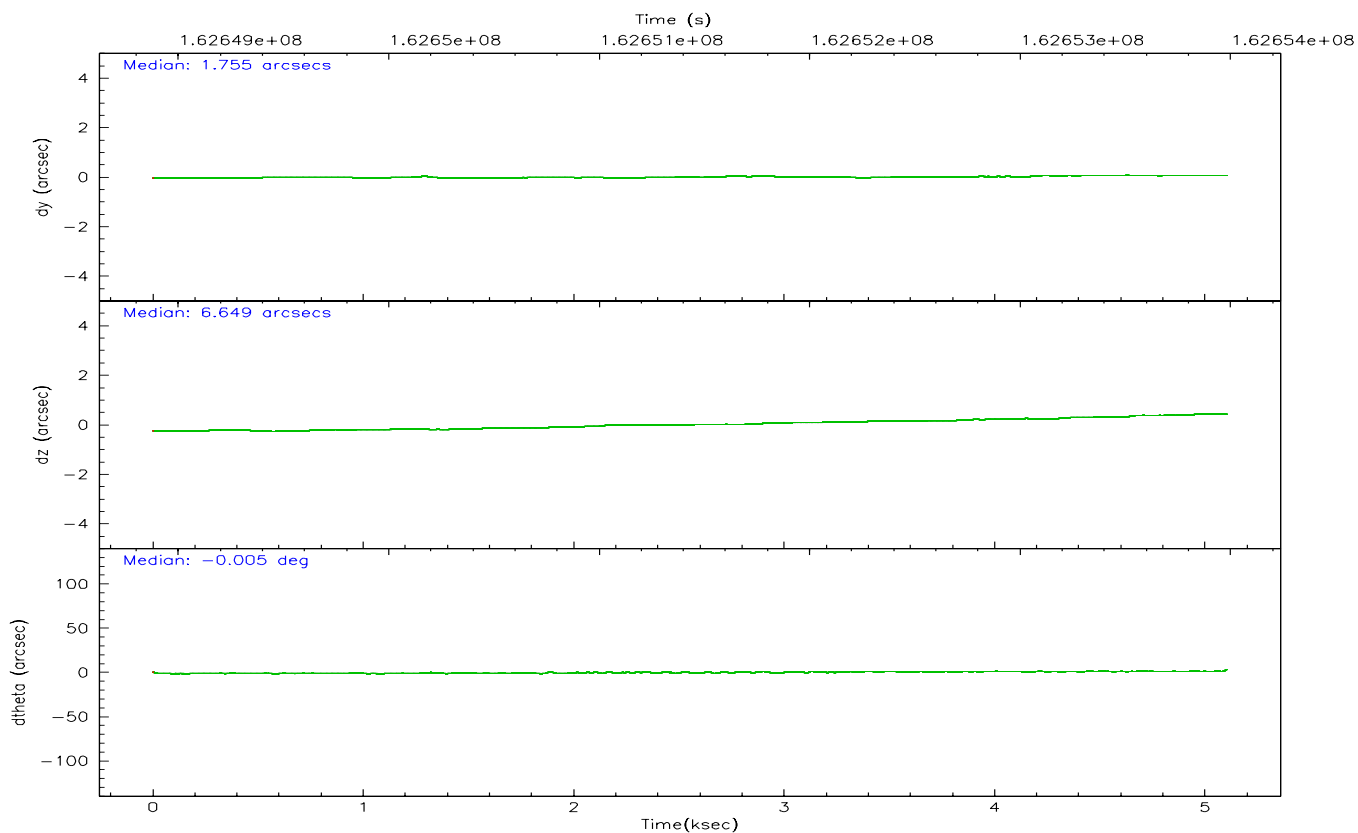
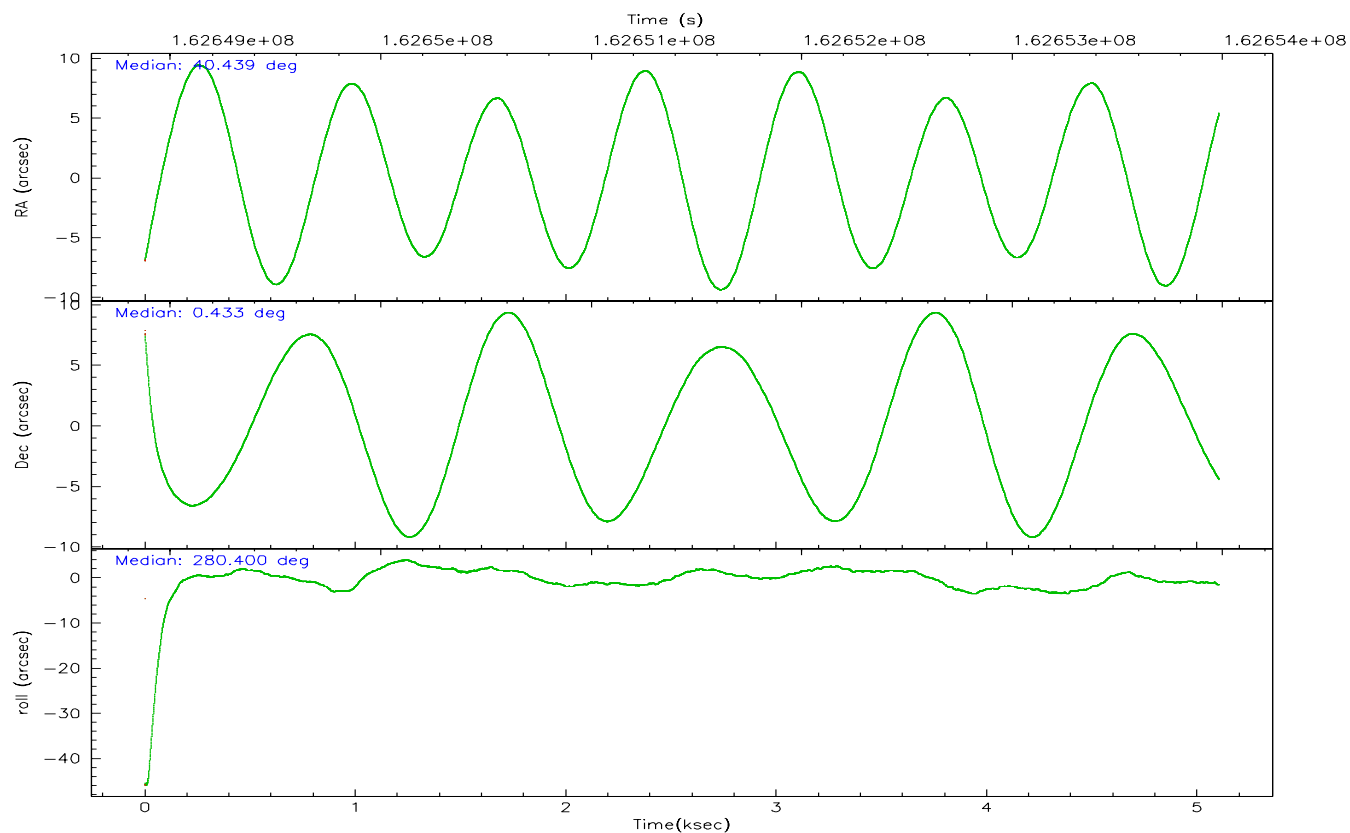
	ccd 2	ccd 3	ccd 5	ccd 6	ccd 7	ccd 8
grade 0 events	1740	1684	6115	1727	1719	3106
	5%	5%	10%	5%	3%	7%
grade 1 events	23	18	333	11	17	18
	0%	0%	0%	0%	0%	0%
grade 2 events	783	727	9476	772	5277	2144
	2%	2%	15%	2%	10%	4%
grade 3 events	387	408	869	449	1203	991
	1%	1%	1%	1%	2%	2%
grade 4 events	380	376	762	384	1214	860
	1%	1%	1%	1%	2%	1%
grade 5 events	1290	1456	2668	1512	3056	1990
	3%	4%	4%	4%	6%	4%
grade 6 events	663	663	14929	814	12466	2318
	1%	1%	24%	2%	24%	5%
grade 7 events	29191	28026	25481	27291	25001	31811
	84%	84%	42%	82%	50%	73%

2.2 Compared Parameters

Parameter	Planned	Actual	Parameter	Planned	Actual
Instrument	ACIS	ACIS	Obspar format version number	6	6
Detector	ACIS-235678	ACIS-235678	Obspar file type	PREDICTED	ACTUAL
Grating	NONE	NONE	Obspar update status	NONE	UPDATED
Data mode	FAINT	FAINT	On-chip summing requested	N	N
Observation mode	POINTING	POINTING	Subarray requested	NONE	NONE
Pointing RA	40.421289	40.43921483313443	Alternating exposures requested	N	N
Pointing Dec	0.453879	0.4334019938236701	Primary exposure time	0.000000	3.2
Pointing Roll	280.242498	280.3988697409978			
SIM focus pos (mm)	-0.684267	-0.6828225247311905			
SIM defocus (mm)	0	0.001444936568705701			
SIM translation stage pos (mm)	-190.132523	-190.1400660498719			
SIM translation stage offset (mm)	0	0.00754346686406393			
Observation start time	162649039.184000	162647872.64695			
Observation start date	2003-02-26T12:16:15	2003-02-26T11:57:52			
Observation end time	162653986.184000	162654300.93472			
Observation end date	2003-02-26T13:38:42	2003-02-26T13:45:00			
Read mode	TIMED	TIMED			

2.3 Aspect



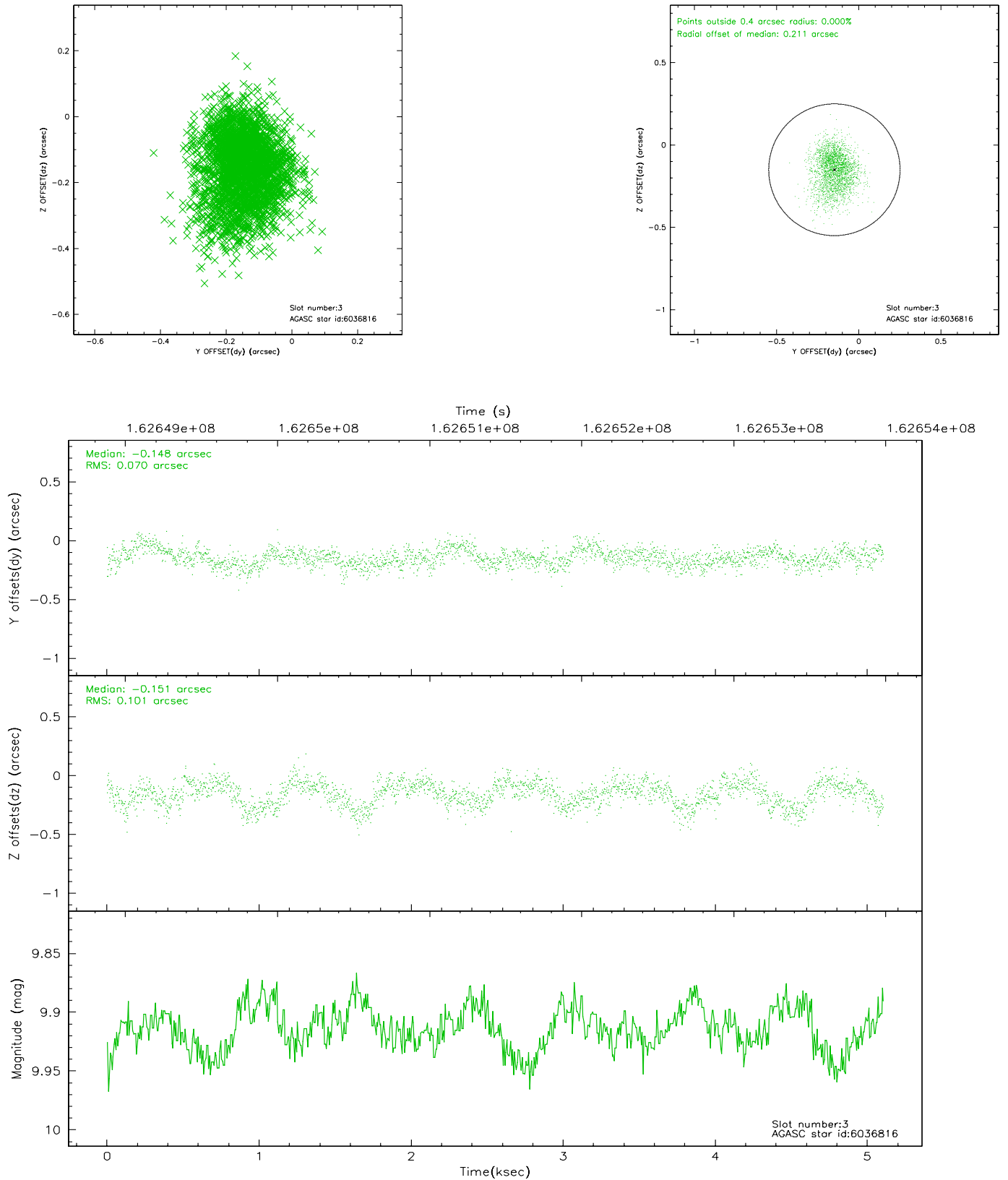


Slot Statistics

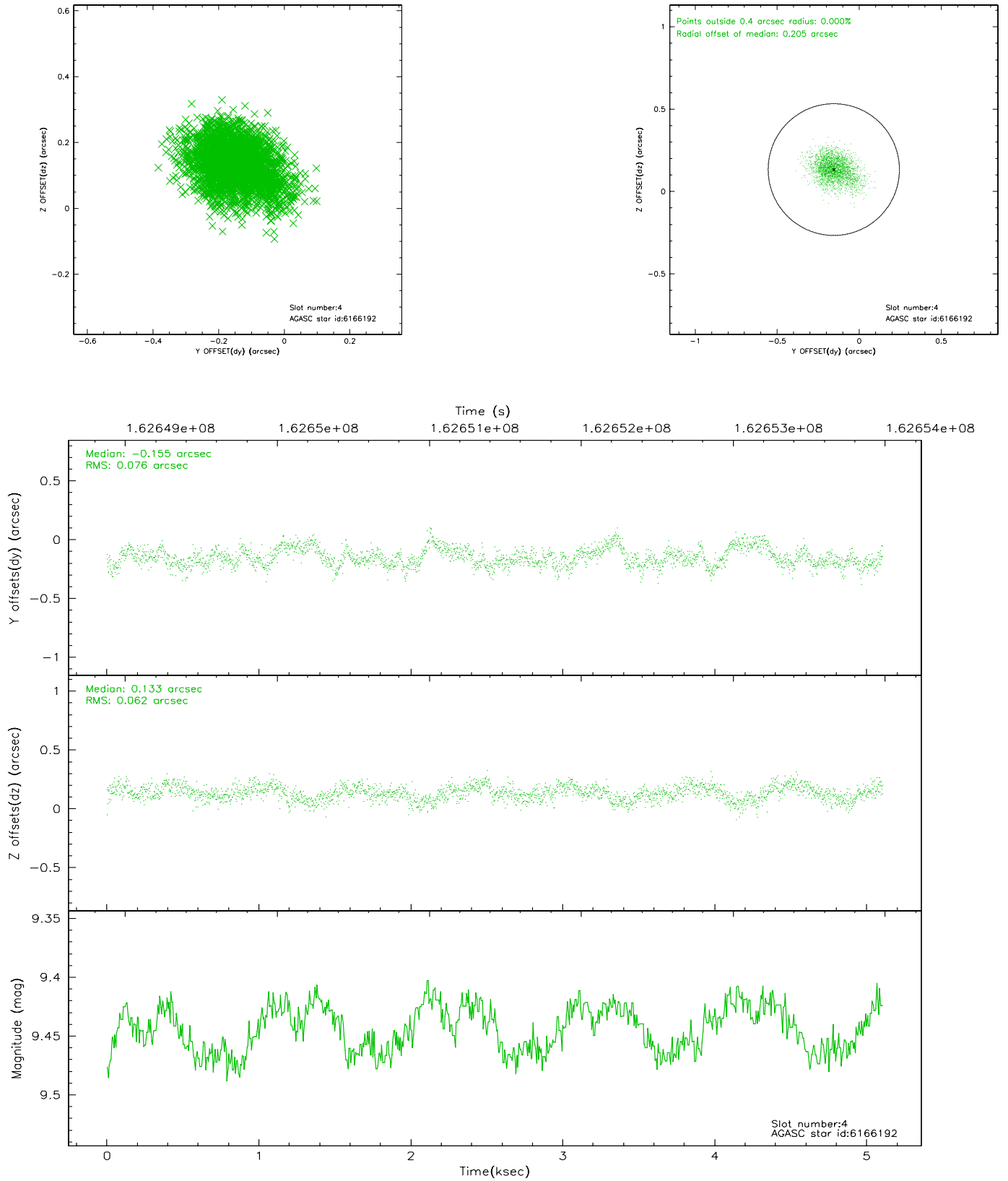
slot	status	id	mag	n_pts	med_dy	med_dz	dr1	dr2	ra	dec	mean_y	mean_z
0	FID	ACIS-S-2	7.11	1246	-0.044	0.012	0.008	0.014	0.000000	0.000000	-754.39	-1727.83
1	FID	ACIS-S-4	7.21	1246	-0.020	0.018	0.006	0.011	0.000000	0.000000	2158.35	179.47
2	FID	ACIS-S-5	7.24	1246	0.032	-0.021	0.007	0.012	0.000000	0.000000	-1805.65	174.41
3	GUIDE	6036816	9.91	2488	-0.148	-0.151	0.131	0.213	39.842255	0.842431	-1747.25	-1802.22
4	GUIDE	6166192	9.44	2490	-0.155	0.133	0.103	0.172	40.243035	0.932066	-1808.84	-325.64
5	GUIDE	6169408	8.97	2491	0.061	0.133	0.085	0.137	40.937839	0.210390	1192.90	1674.25
6	GUIDE	615910960	9.62	2490	0.318	-0.010	0.115	0.184	40.339678	-0.092669	1885.05	-637.95
7	GUIDE	6166048	8.14	2490	-0.078	-0.094	0.055	0.092	40.482066	0.525874	-215.15	261.32

2.4 Star Slots

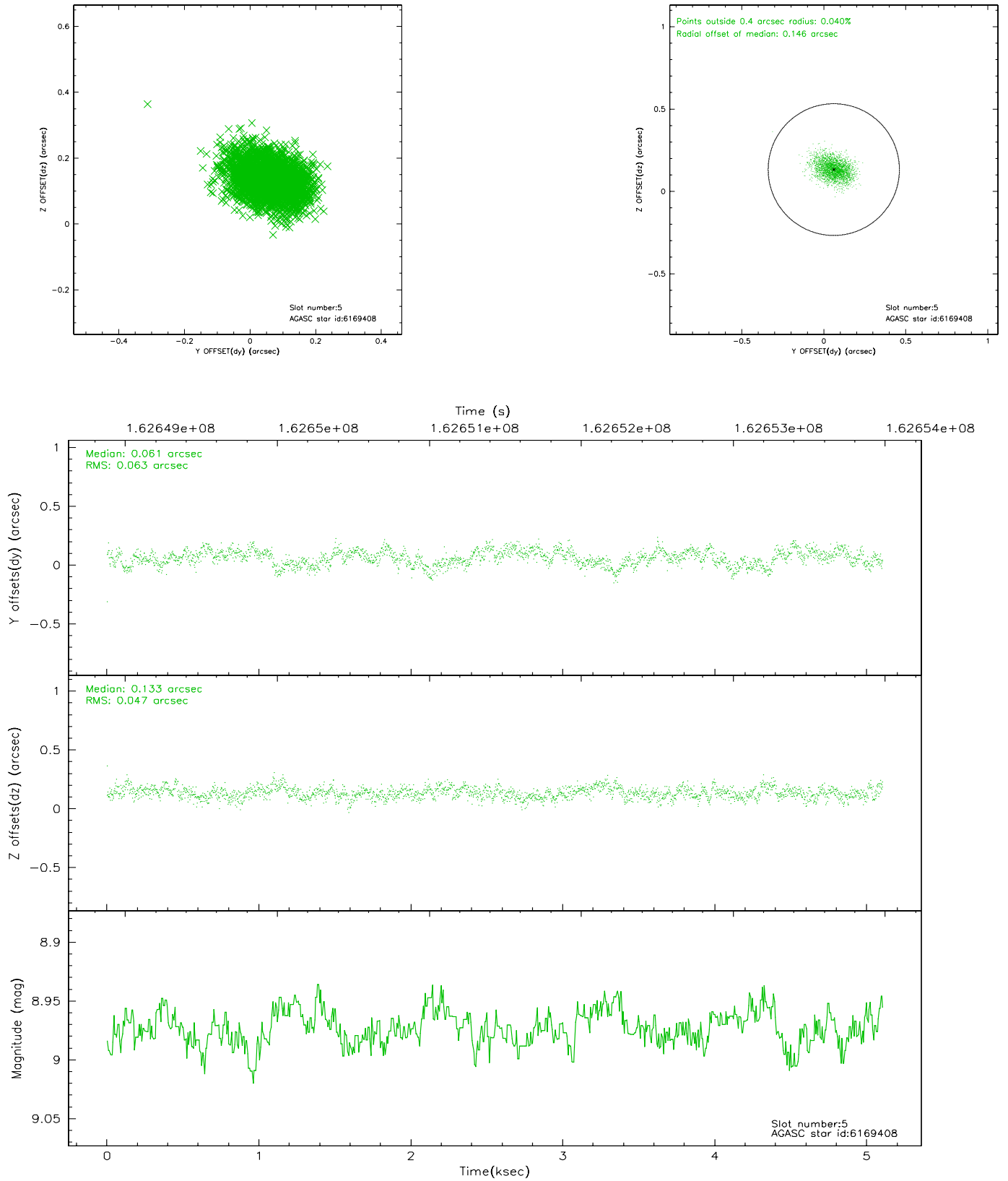
2.4.1 Slot 3



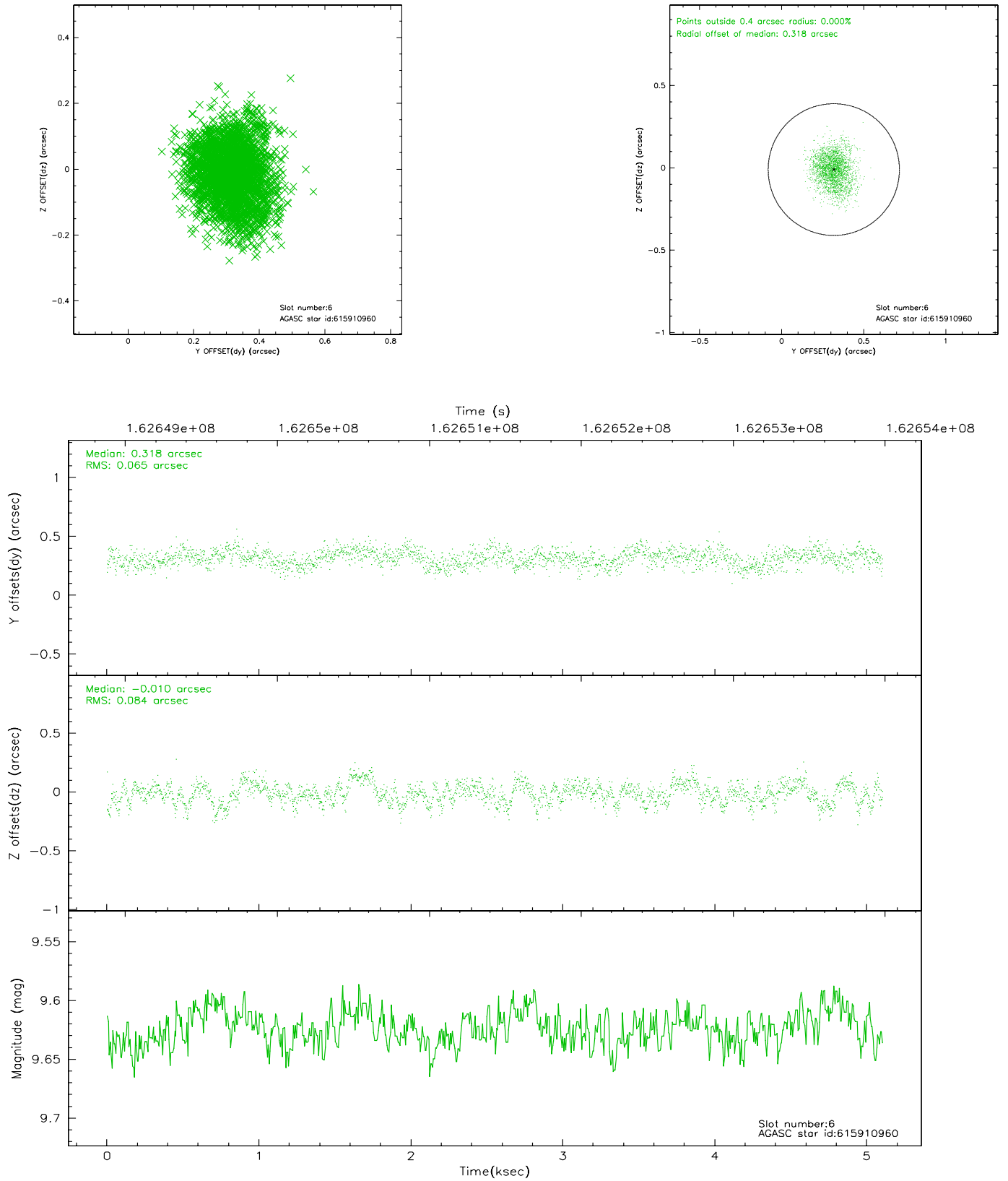
2.4.2 Slot 4



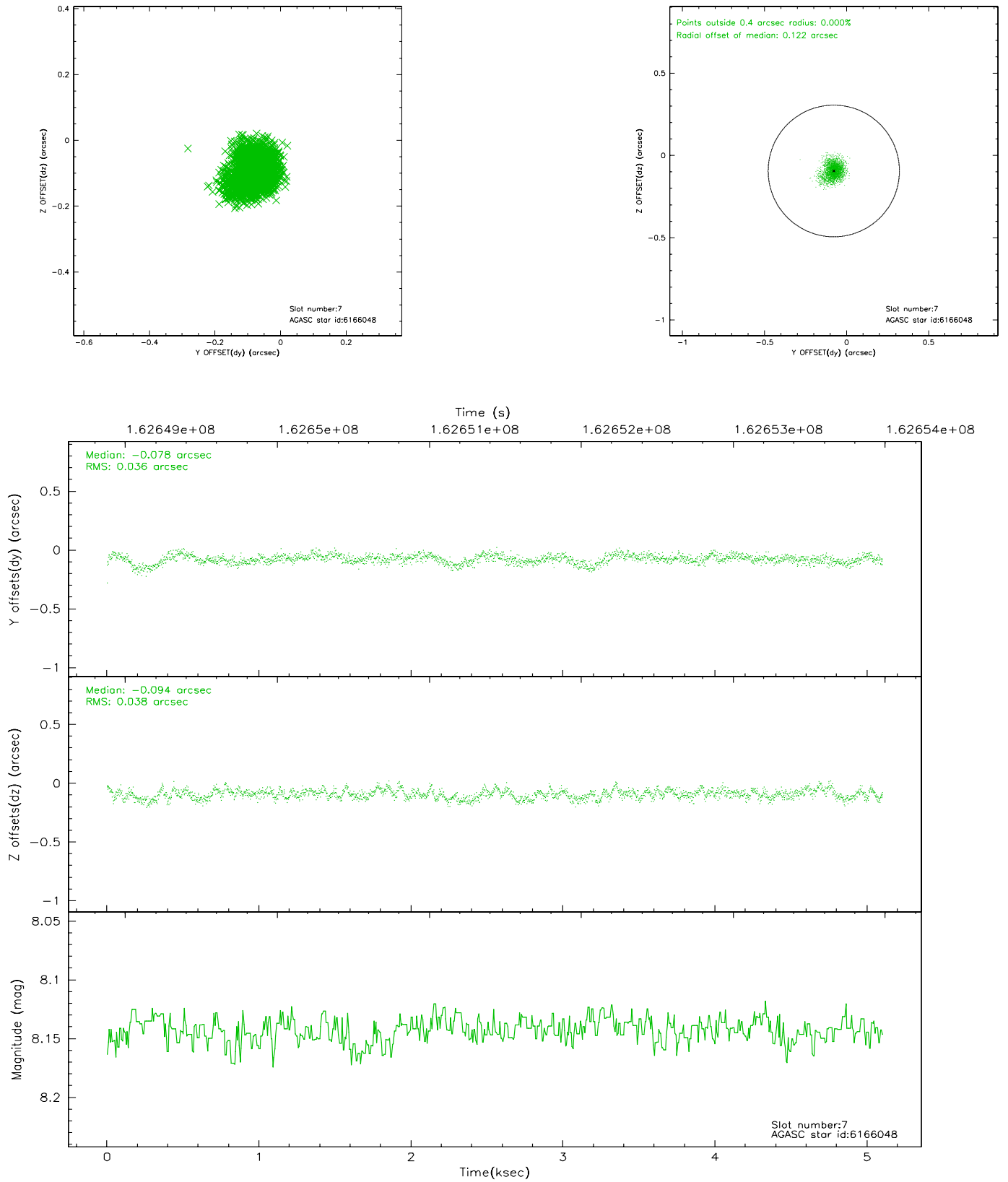
2.4.3 Slot 5



2.4.4 Slot 6

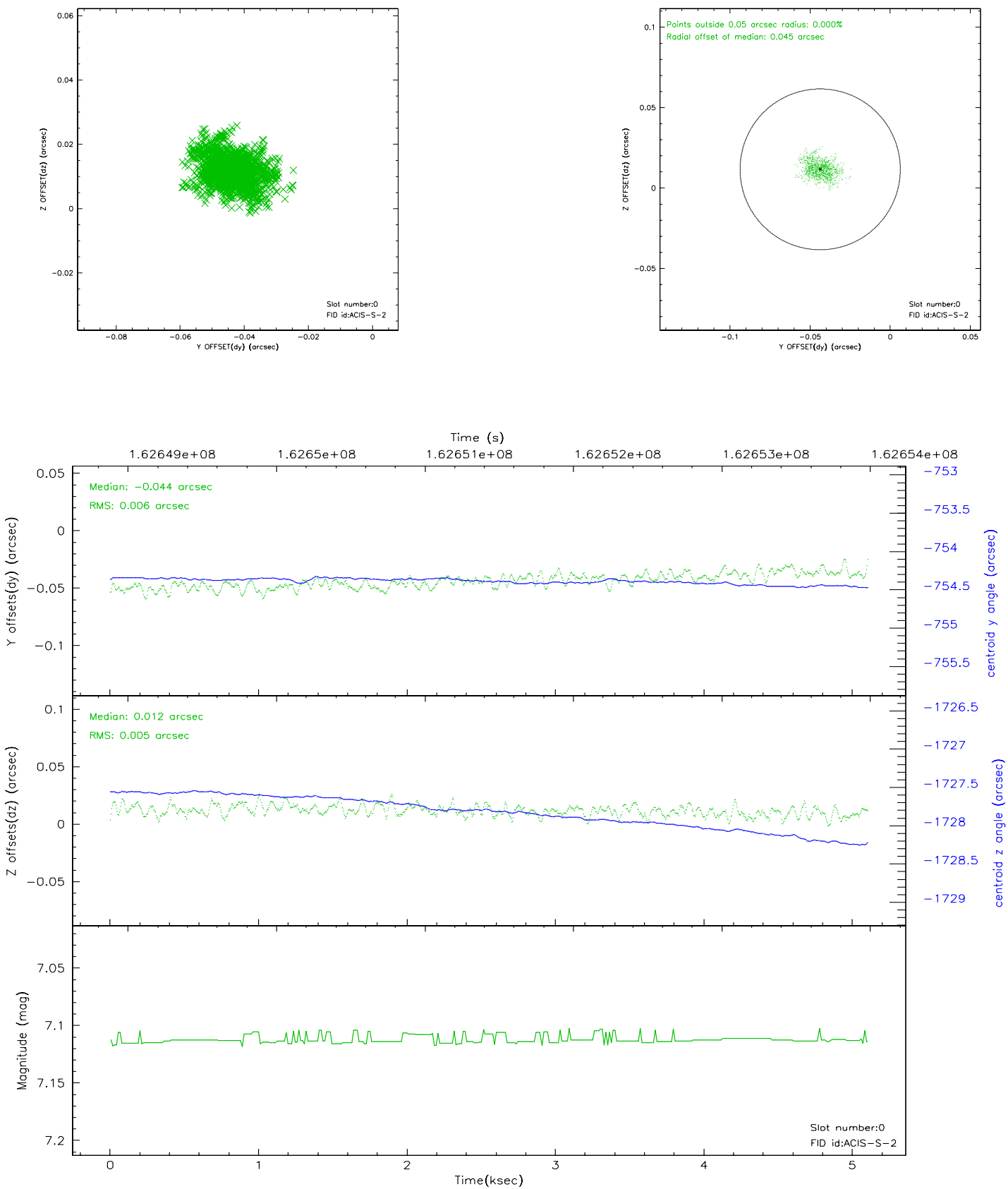


2.4.5 Slot 7

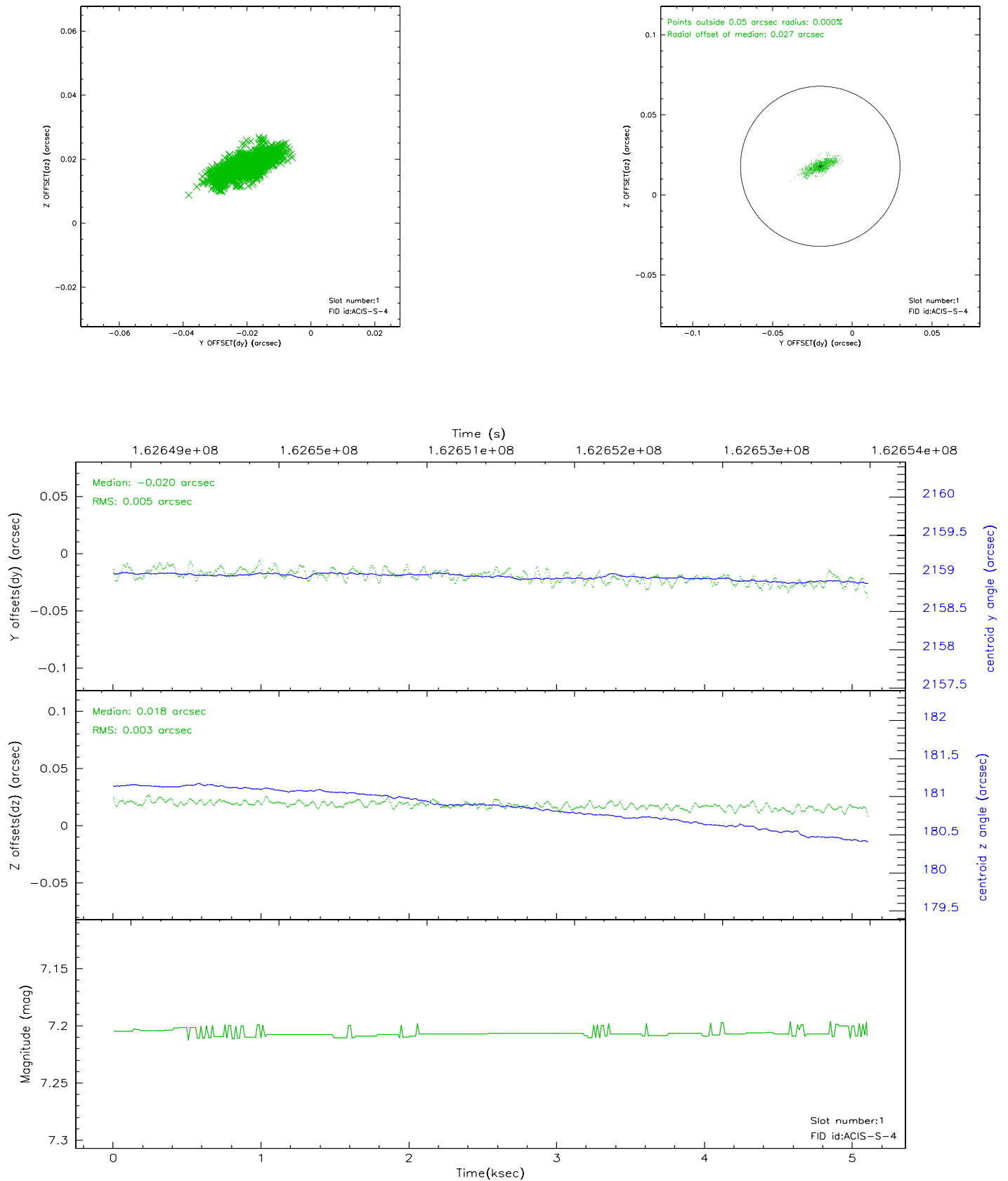


2.5 FID Slots

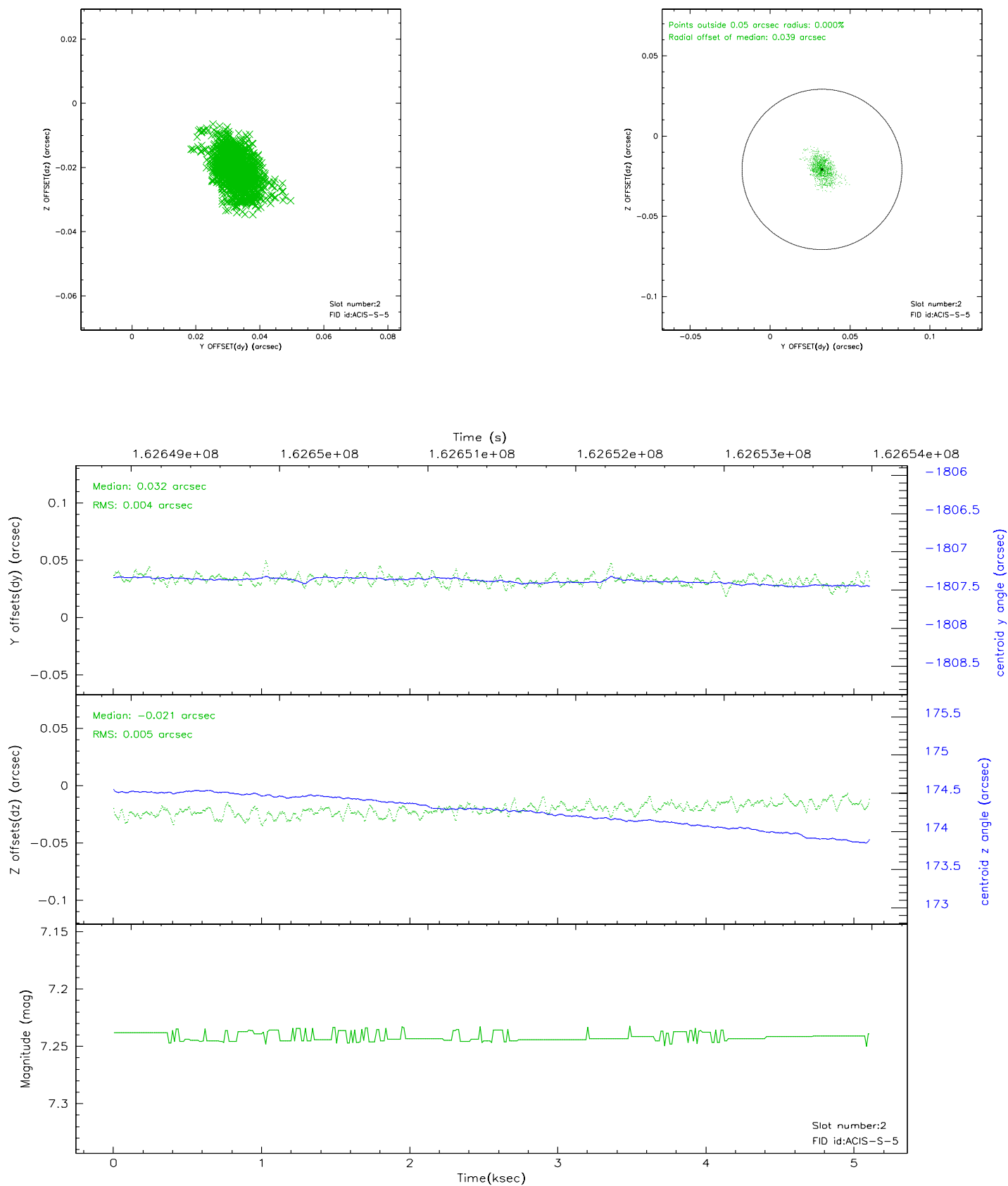
2.5.1 Slot 0



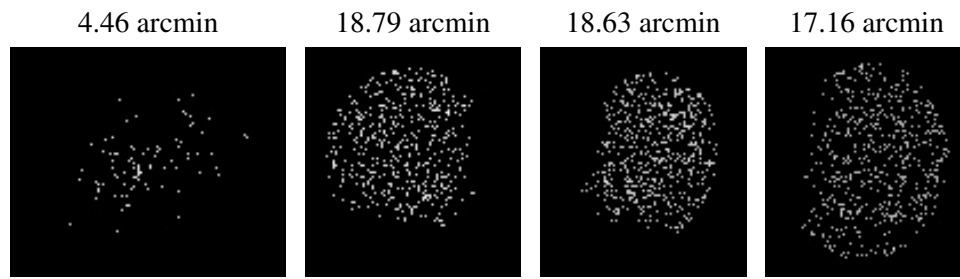
2.5.2 Slot 1



2.5.3 Slot 2



3 Point Sources



A Summary

A.1 Status

V&V Scientist	Jen Lauer
V&V Date (YYYY-MM-DD)	2006.07.28
V&V Edition	1
V&V Disposition and Status	OK
V&V Charge Time	5.097

A.2 Comments

The ACIS focal plane temperature was above calibration limits for the last 3 ksec of the obsid.

The ACIS spectral response calibration is less accurate at these warmer temperatures than it is at -119.7 C. Users whose science objectives depend on the most accurate spectral response (ie: fitting line-rich spectra) may notice an effect. Users whose science objectives do not depend on the most accurate spectral response should not notice an effect.