

# V&V Reference Report

## L2 ASCDS Version : 7.6.8.1

Observation 3973 - L2 Version 001  
Chandra X-Ray Center

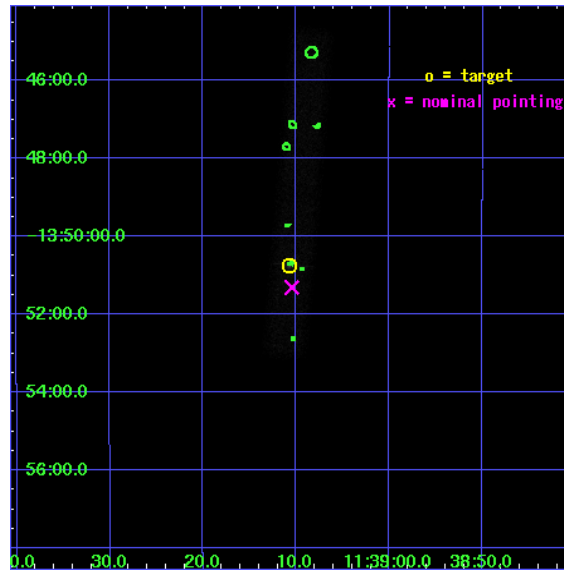
L2 Processing Date : Aug 7 2006

## Contents

<b>1</b>	<b>Front</b>	<b>2</b>
<b>2</b>	<b>OBI</b>	<b>3</b>
2.1	OBI . . . . .	3
2.1.1	Images . . . . .	3
2.1.2	Bias . . . . .	3
2.1.3	Parameters . . . . .	4
2.1.4	Events . . . . .	4
2.2	Compared Parameters . . . . .	5
2.3	Aspect . . . . .	6
2.4	Star Slots . . . . .	9
2.4.1	Slot 3 . . . . .	9
2.4.2	Slot 5 . . . . .	10
2.4.3	Slot 6 . . . . .	11
2.4.4	Slot 7 . . . . .	12
2.5	FID Slots . . . . .	13
2.5.1	Slot 0 . . . . .	13
2.5.2	Slot 1 . . . . .	14
2.5.3	Slot 2 . . . . .	15
<b>3</b>	<b>Point Sources</b>	<b>16</b>
<b>A</b>	<b>Summary</b>	<b>17</b>
A.1	Status . . . . .	17
A.2	Comments . . . . .	17

# 1 Front

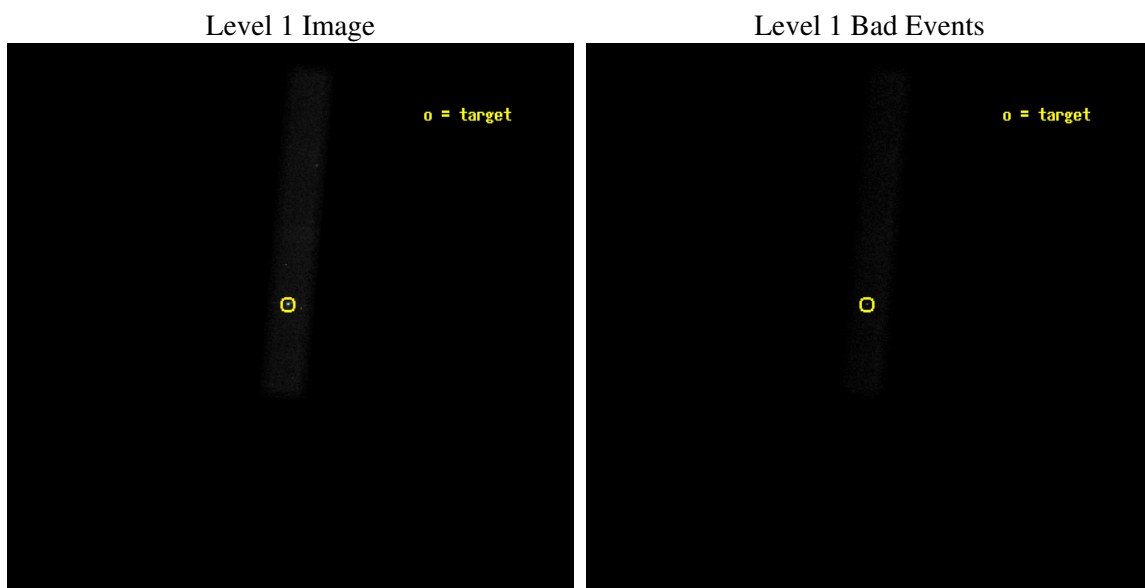
seq_num	700652
obs_id	3973
title	THE PHYSICS OF RELATIVISTIC JETS: DEEP CHANDRA AND HST OBSERVATIONS OF TWO NEWLY DISCOVERED JETS
observer	Dr. Rita Sambruna
object	1136-135
dtcycle	0
cycle	P
ra_targ	174.794583
dec_targ	-13.845556
ra_nom	174.79368063024
dec_nom	-13.855164942795
roll_nom	274.92553100723
revision	3
ontime	77374.401152968
livetime	70174.497689977
ontime7	77374.401152968
l2events	57332



## 2 OBI

### 2.1 OBI

#### 2.1.1 Images



#### 2.1.2 Bias

Chip 7



### 2.1.3 Parameters

obi_num	0
ascdsver	7.6.8.1
caldbver	3.2.2
date	2006-08-07T16:36:27
revision	3

sched_exp_time	77000.000000
ontime	77859.102930337
ontime7	77859.102930337
l1events	107345

### 2.1.4 Events

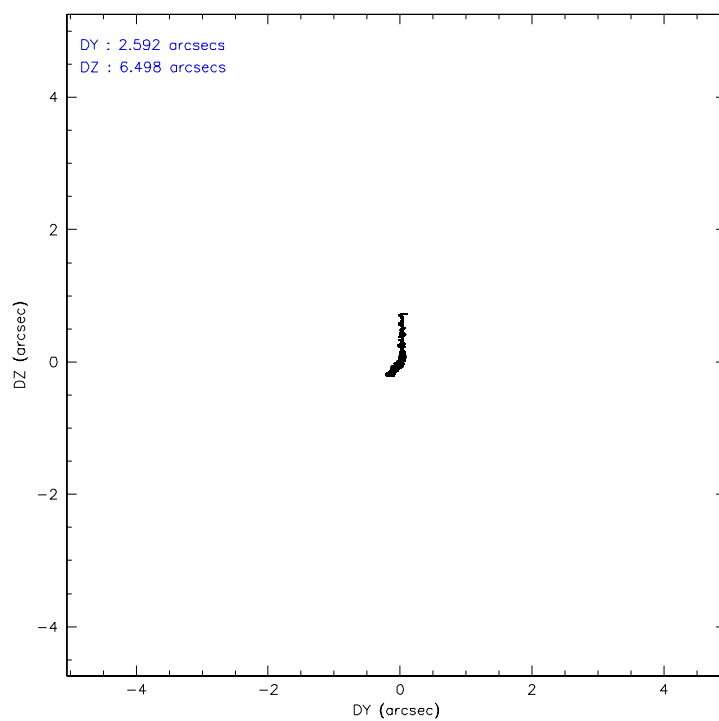
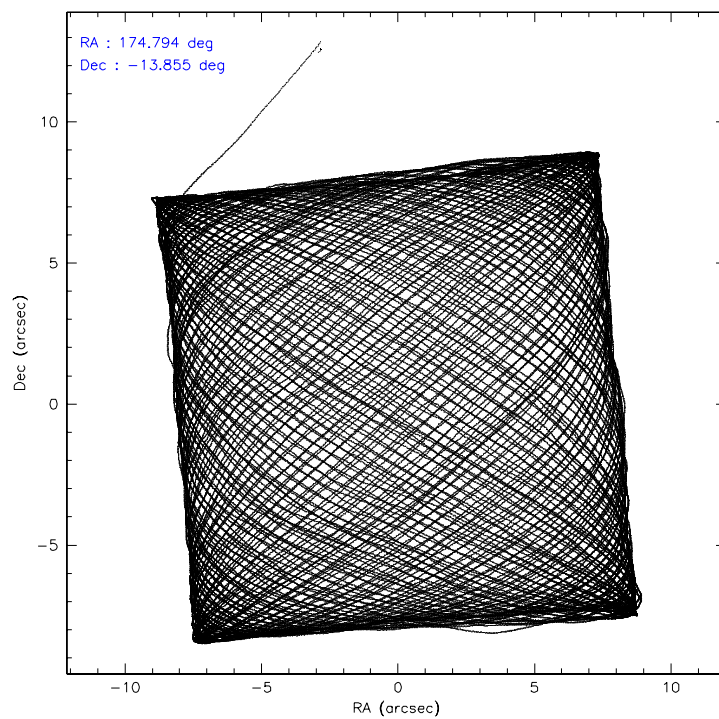
	<b>ccd 7</b>
level 1 events	107345
rejected events	48412
rejected %	45%

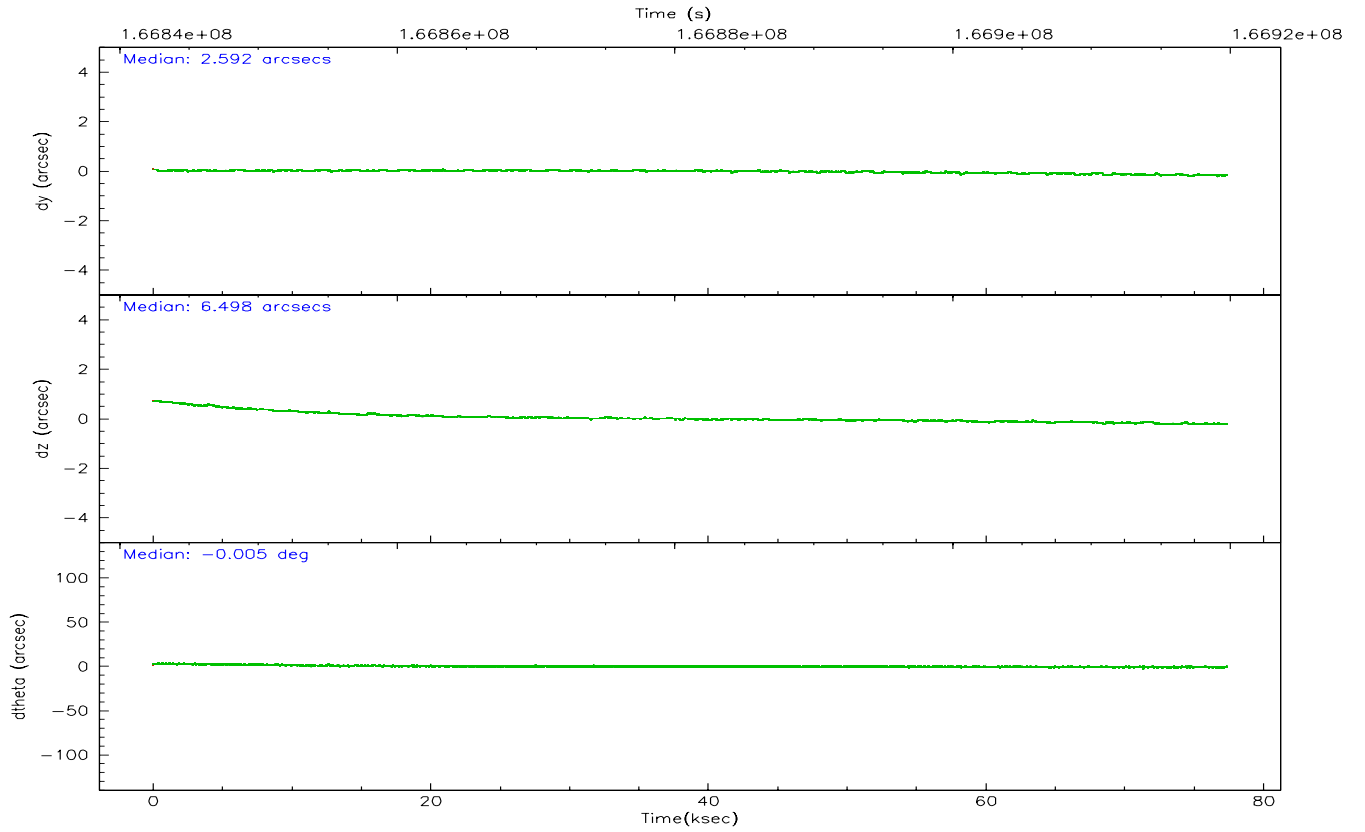
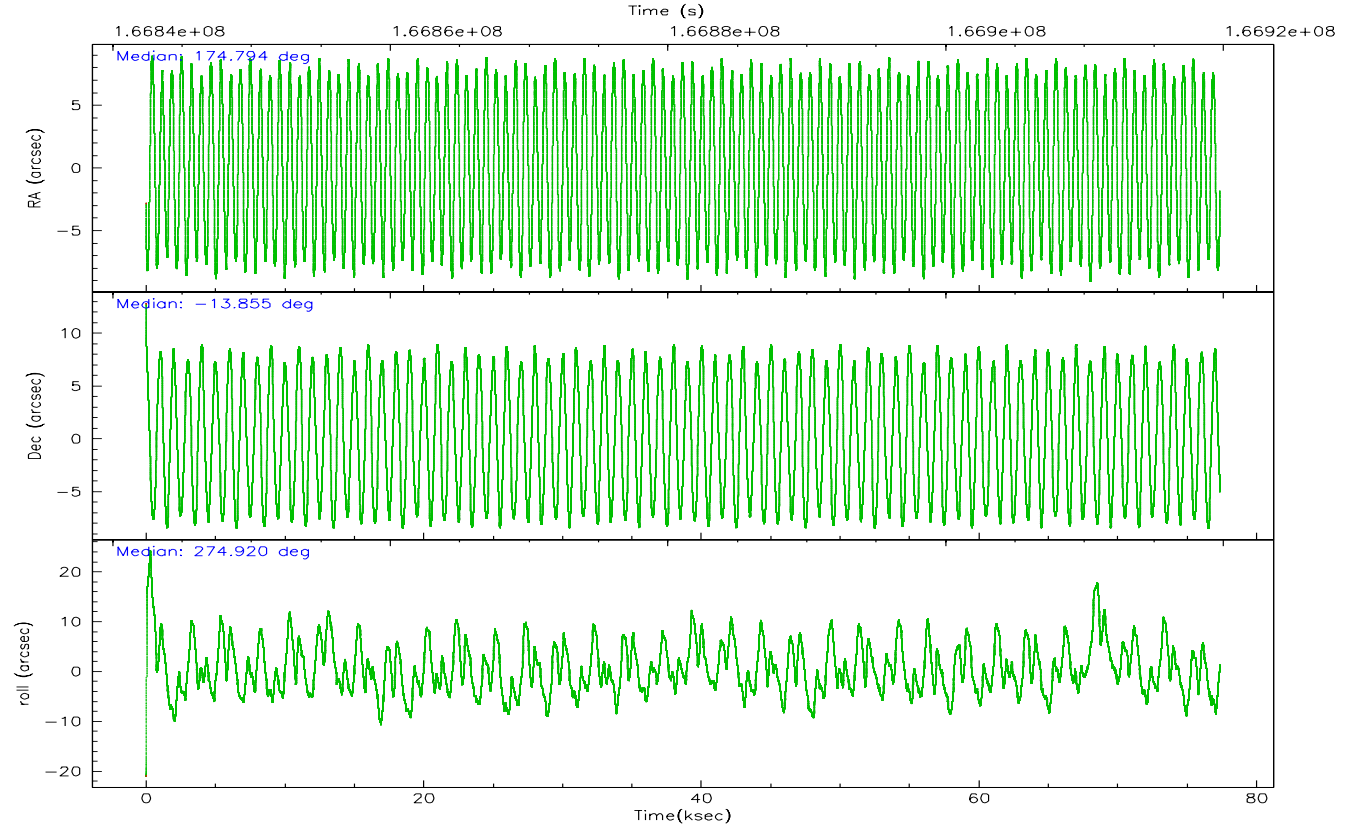
	<b>ccd 7</b>
grade 0 events	9918
	9%
grade 1 events	123
	0%
grade 2 events	13872
	12%
grade 3 events	6491
	6%
grade 4 events	6176
	5%
grade 5 events	6366
	5%
grade 6 events	22713
	21%
grade 7 events	41686
	38%

## 2.2 Compared Parameters

Parameter	Planned	Actual	Parameter	Planned	Actual
Instrument	ACIS	ACIS	Obspar format version number	6	6
Detector	ACIS-7	ACIS-7	Obspar file type	PREDICTED	ACTUAL
Grating	NONE	NONE	Obspar update status	NONE	UPDATED
Data mode	VFAINT	VFAINT	On-chip summing requested	N	N
Observation mode	POINTING	POINTING	Subarray requested	1/8	1/8
Pointing RA	174.777324	174.7936806302436	Subarray start row	0	449
Pointing Dec	-13.833070	-13.85516494279494	Subarray row count	1024	128
Pointing Roll	274.764993	274.9255310072315	Alternating exposures requested	N	N
SIM focus pos (mm)	-0.684267	-0.6828225247311905	Primary exposure time	0.000000	0.4
SIM defocus (mm)	0	0.001444936568705701			
SIM translation stage pos (mm)	-190.132523	-190.1400660498719			
SIM translation stage offset (mm)	0	0.00754346686406393			
Observation start time	166842773.184000	166841719.7737			
Observation start date	2003-04-16T01:11:49	2003-04-16T00:55:19			
Observation end time	166919773.184000	166920760.08954			
Observation end date	2003-04-16T22:35:09	2003-04-16T22:52:40			
Read mode	TIMED	TIMED			

## 2.3 Aspect



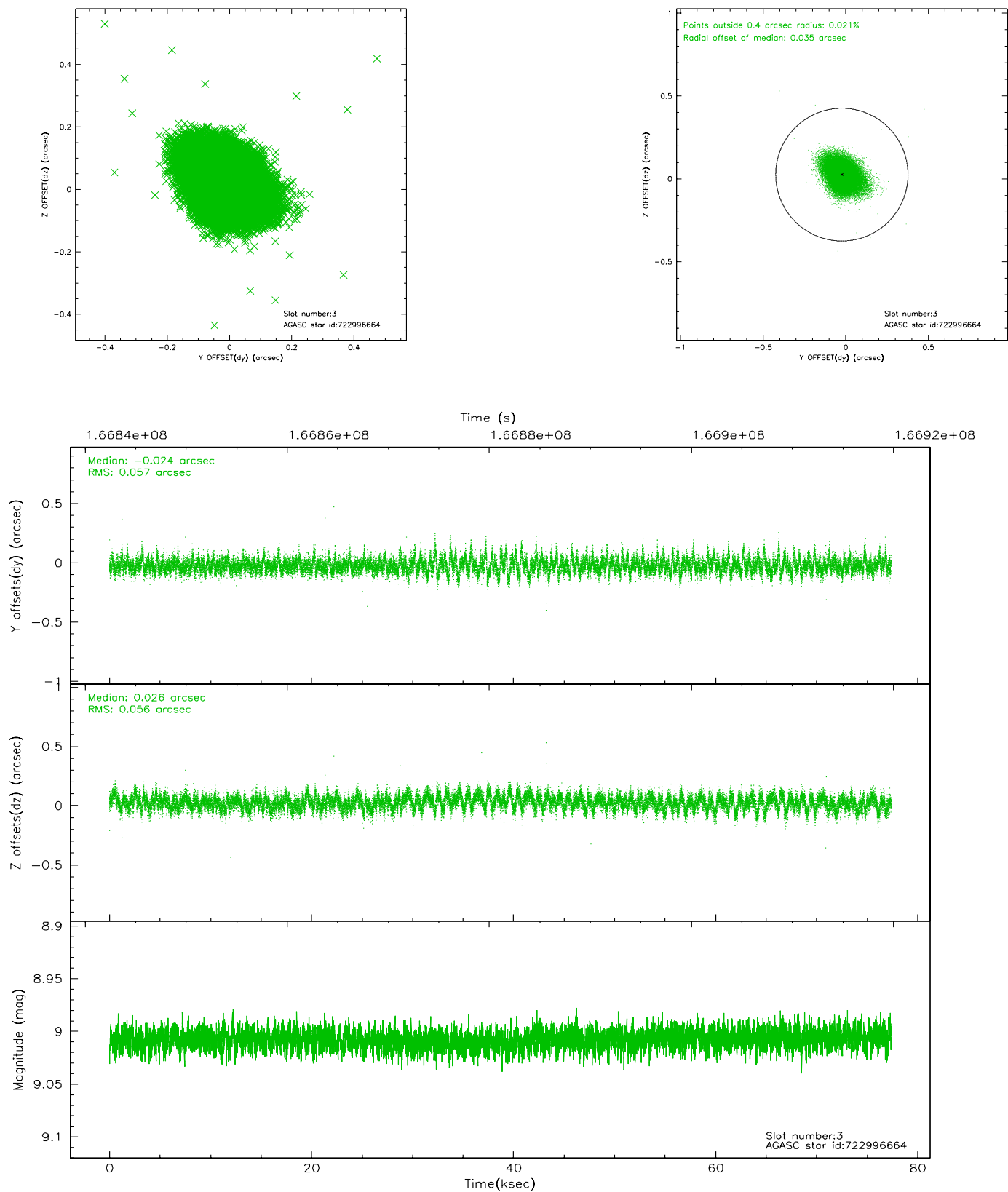


### Slot Statistics

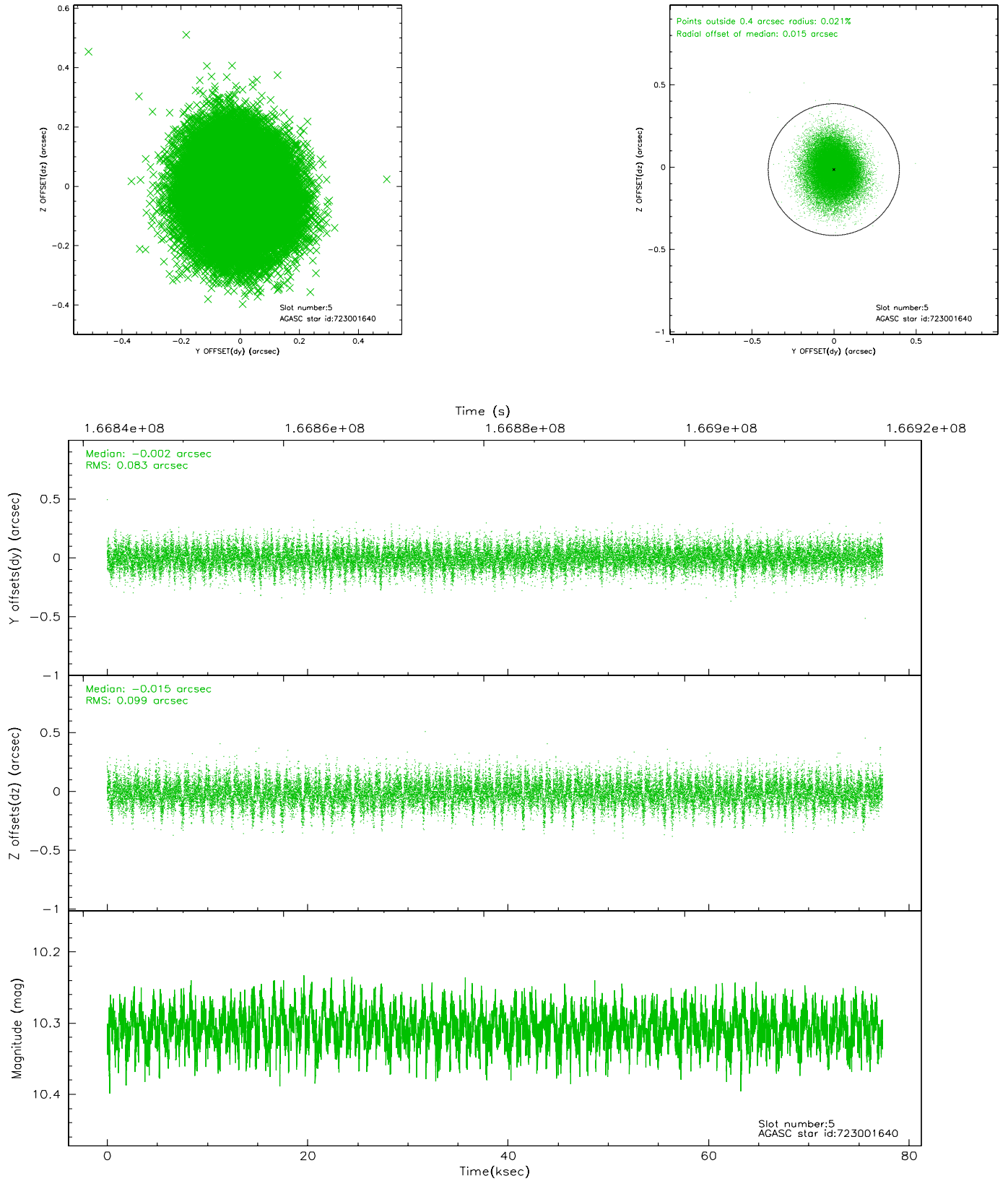
slot	status	id	mag	n_pts	med_dy	med_dz	dr1	dr2	ra	dec	mean_y	mean_z
0	FID	ACIS-S-2	7.12	18872	-0.031	0.021	0.008	0.016	0.000000	0.000000	-755.20	-1727.70
1	FID	ACIS-S-4	7.21	18871	-0.037	0.009	0.006	0.013	0.000000	0.000000	2158.07	180.90
2	FID	ACIS-S-5	7.24	18873	0.036	-0.022	0.007	0.013	0.000000	0.000000	-1808.09	174.39
3	GUIDE	722996664	9.01	37733	-0.024	0.026	0.083	0.142	174.774975	-13.414720	-1501.03	117.00
4	OMITTED		0.00	0	0.000	0.000	0.000	0.000	0.000000	0.000000	0.00	0.00
5	GUIDE	723001640	10.31	37682	-0.002	-0.015	0.137	0.226	174.422337	-14.161760	1078.00	-1333.01
6	GUIDE	723005464	10.36	37257	0.083	0.043	0.187	0.307	174.188317	-13.735268	-518.64	-2023.52
7	GUIDE	723005784	6.70	37743	-0.056	-0.052	0.084	0.127	174.963005	-14.468539	2334.26	455.21

## 2.4 Star Slots

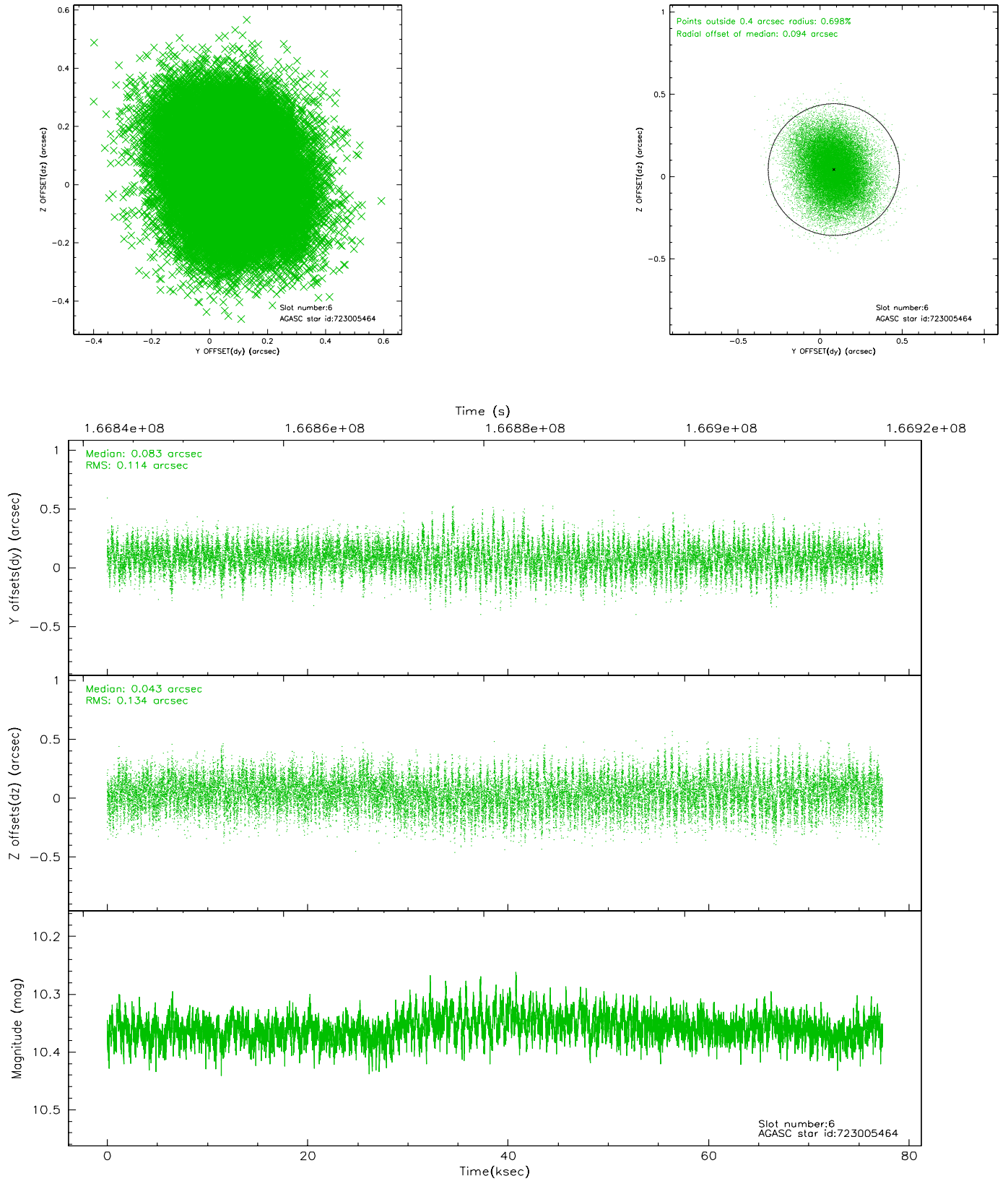
### 2.4.1 Slot 3



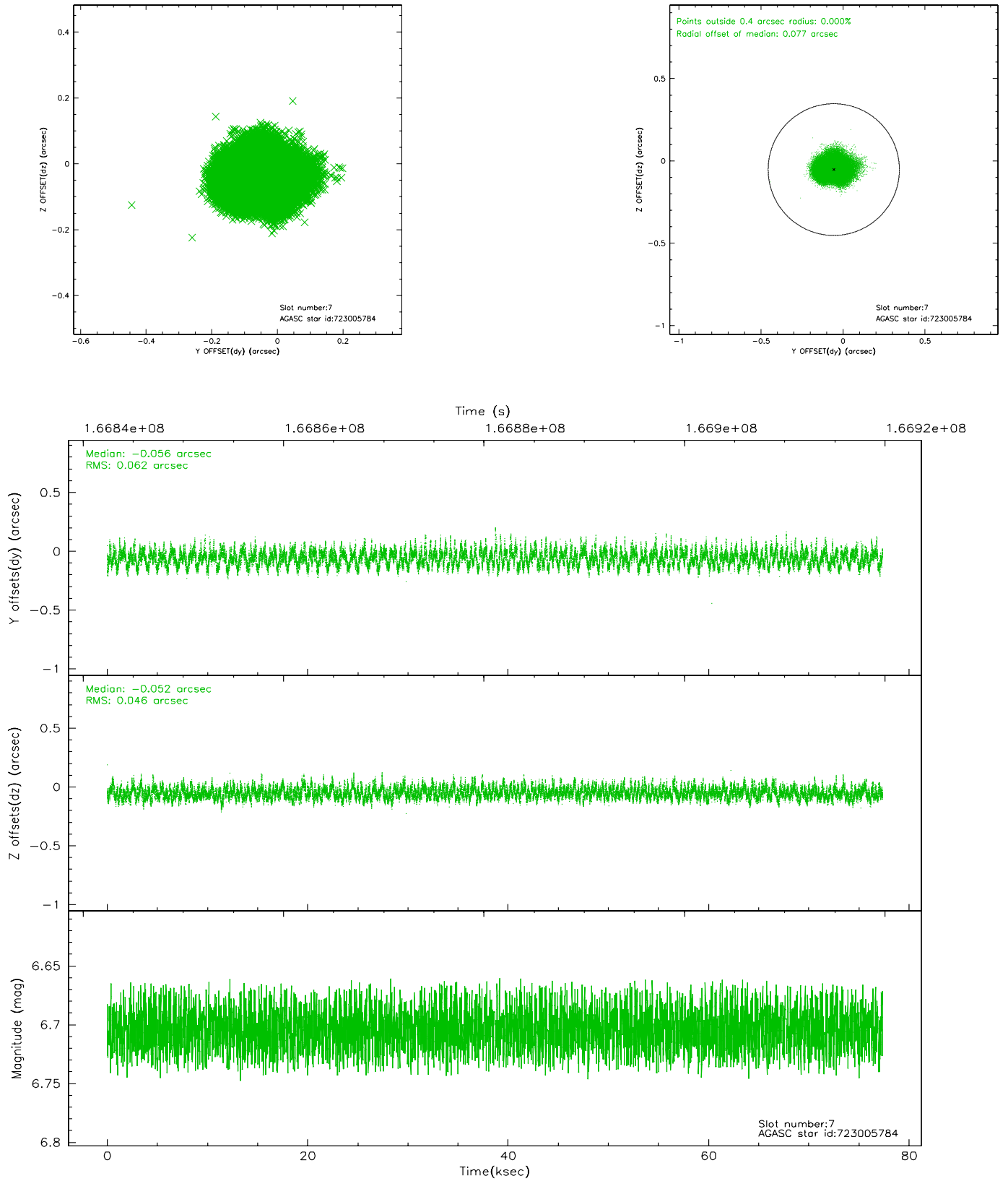
## 2.4.2 Slot 5



### 2.4.3 Slot 6

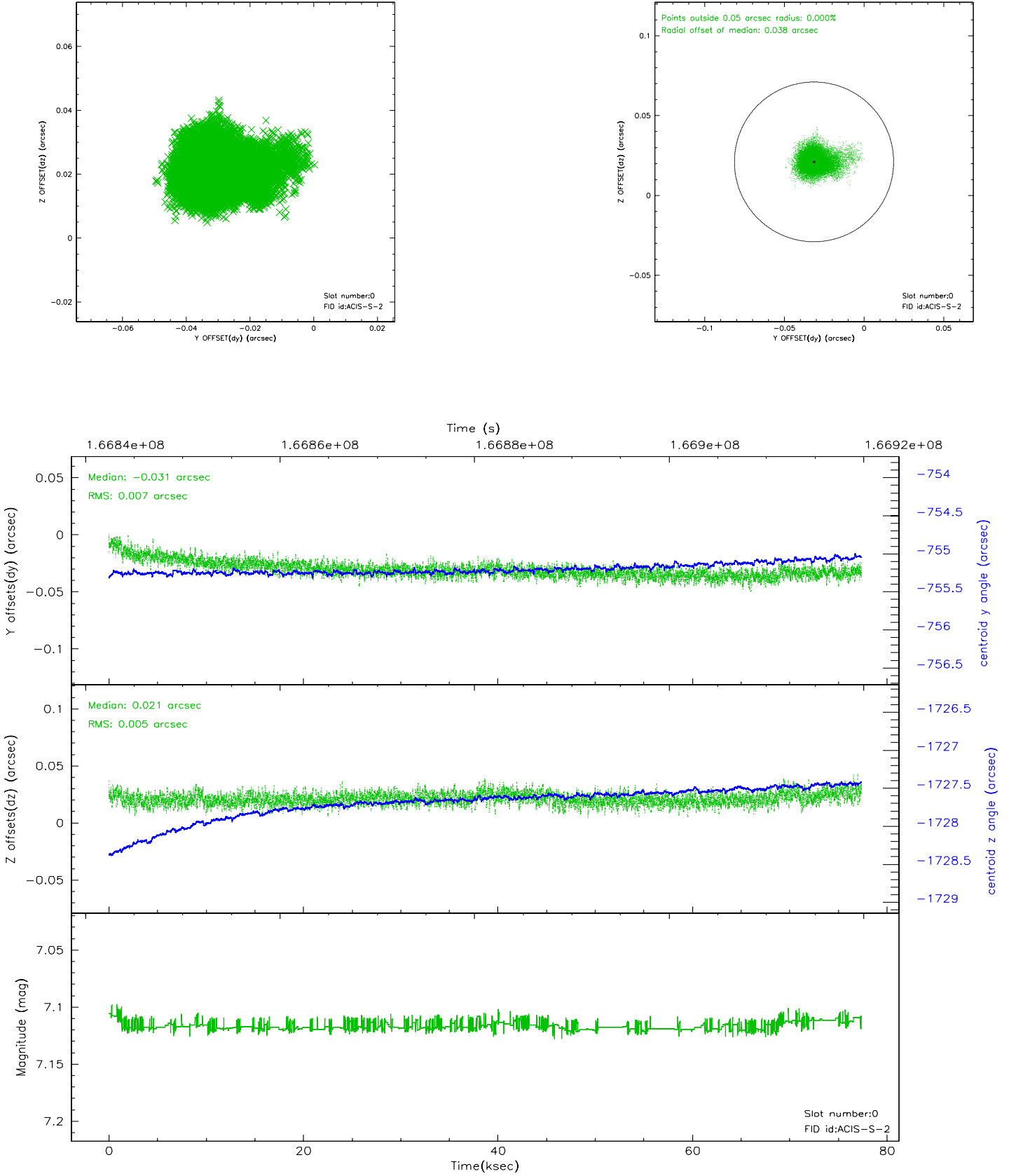


## 2.4.4 Slot 7

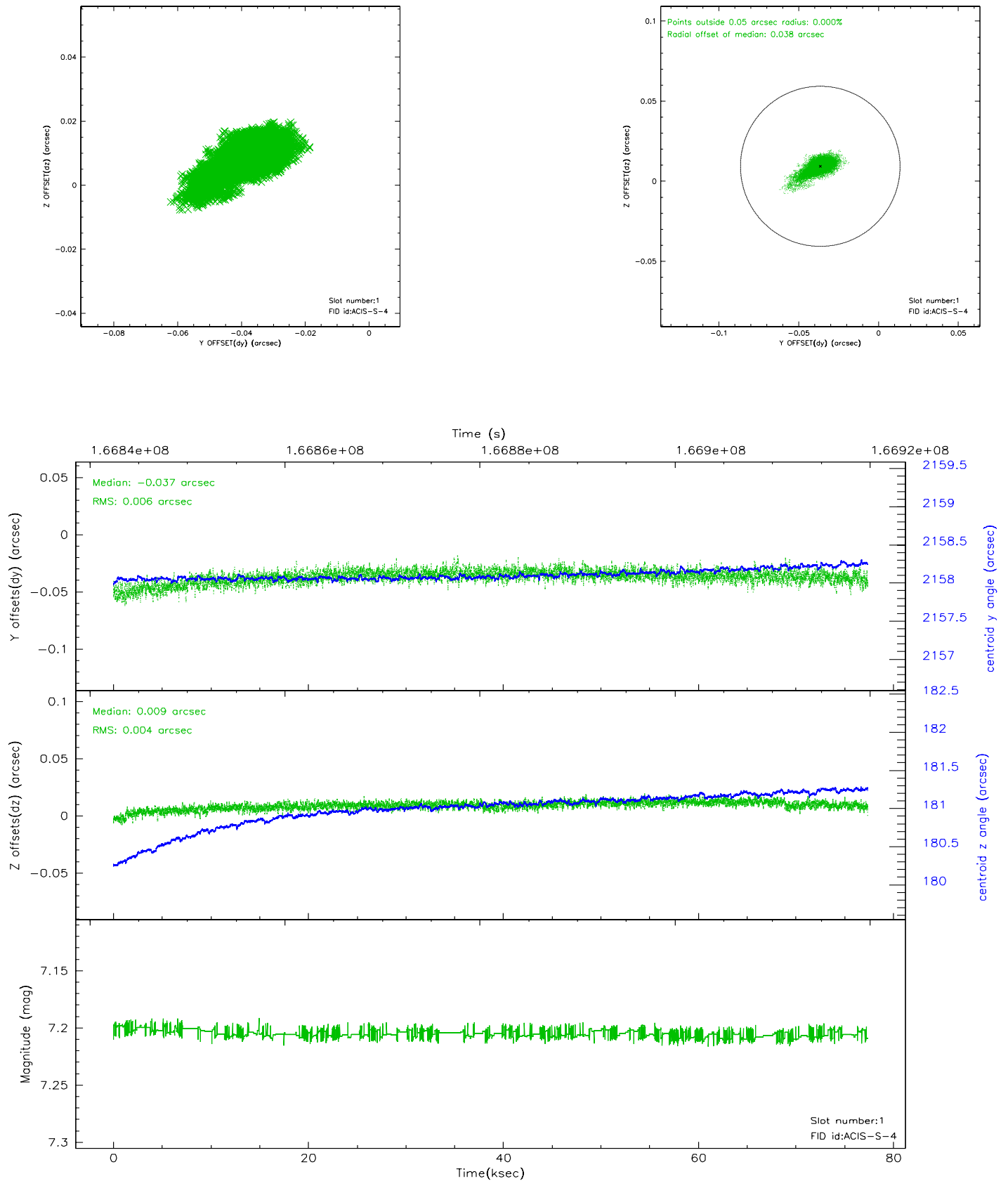


## 2.5 FID Slots

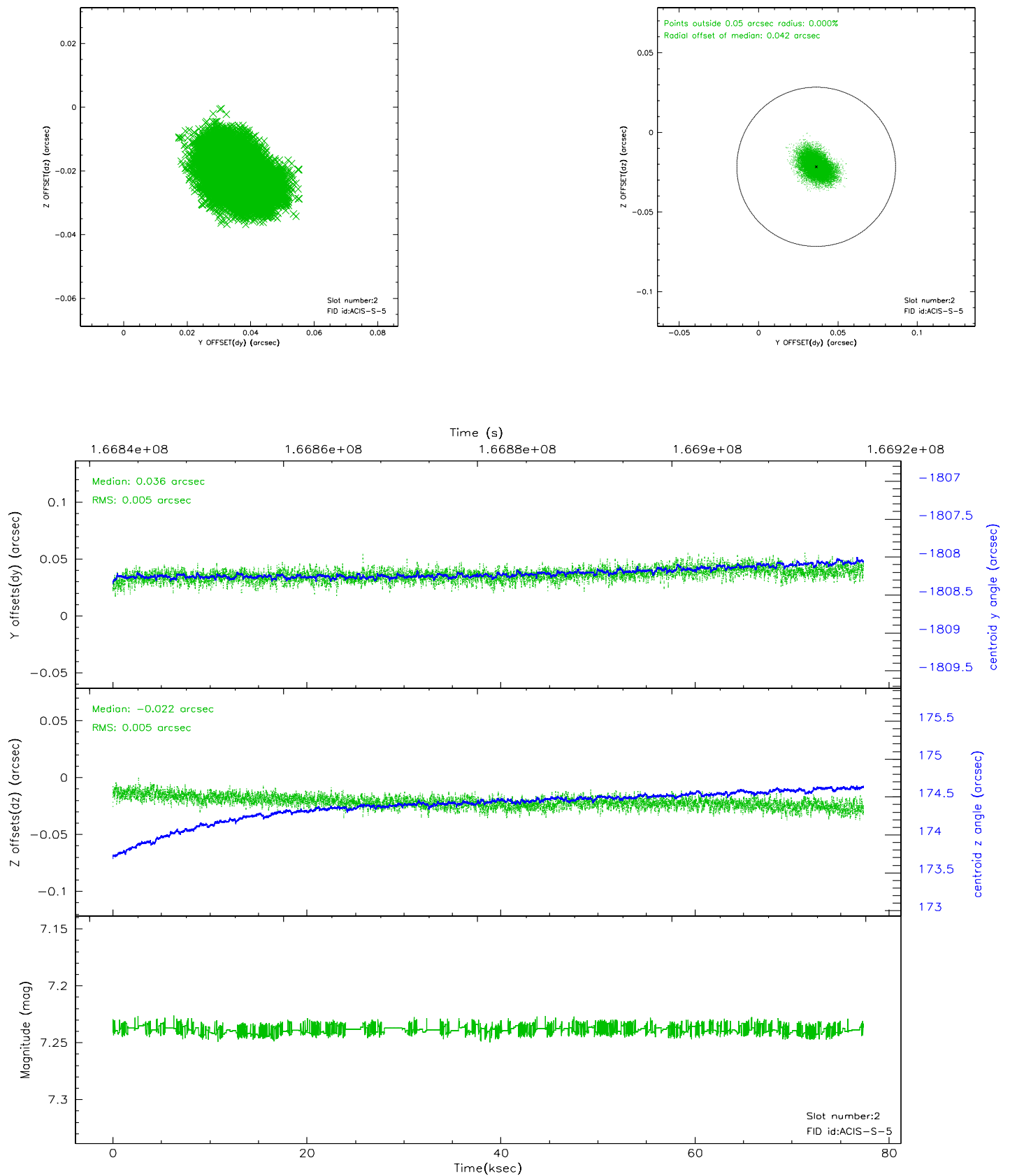
### 2.5.1 Slot 0



## 2.5.2 Slot 1

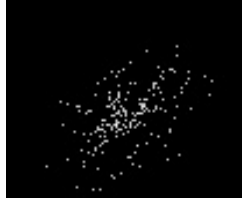


### 2.5.3 Slot 2



### 3 Point Sources

4.19 arcmin



# A Summary

## A.1 Status

V&V Scientist	Beth Sundheim
V&V Date (YYYY-MM-DD)	2010.10.01
V&V Edition	2
V&V Disposition and Status	OK
V&V Charge Time	77.374

## A.2 Comments

The guide star in slot 4 was manually excluded from the processing due to poor data quality.