

# V&V Reference Report

## L2 ASCDS Version : 7.6.8

Observation 3972 - L2 Version 001  
Chandra X-Ray Center

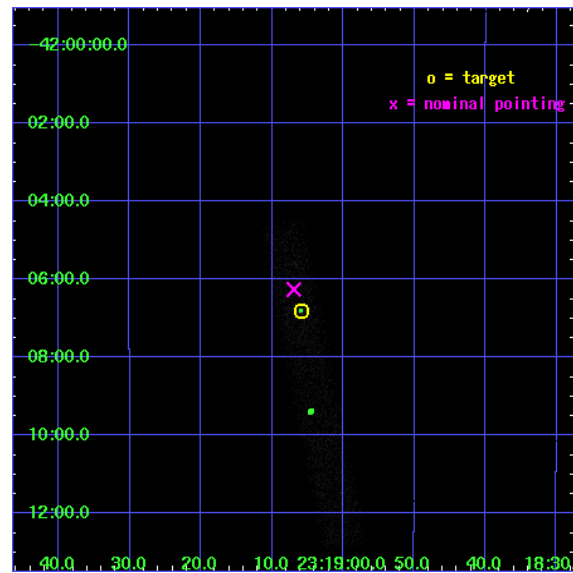
L2 Processing Date : Jul 14 2006

## Contents

<b>1</b>	<b>Front</b>	<b>2</b>
<b>2</b>	<b>OBI</b>	<b>3</b>
2.1	OBI . . . . .	3
2.1.1	Images . . . . .	3
2.1.2	Bias . . . . .	3
2.1.3	Parameters . . . . .	4
2.1.4	Events . . . . .	4
2.2	Compared Parameters . . . . .	5
2.3	Aspect . . . . .	6
2.4	Star Slots . . . . .	9
2.4.1	Slot 3 . . . . .	9
2.4.2	Slot 4 . . . . .	10
2.4.3	Slot 5 . . . . .	11
2.4.4	Slot 6 . . . . .	12
2.4.5	Slot 7 . . . . .	13
2.5	FID Slots . . . . .	14
2.5.1	Slot 0 . . . . .	14
2.5.2	Slot 1 . . . . .	15
2.5.3	Slot 2 . . . . .	16
<b>3</b>	<b>Point Sources</b>	<b>17</b>
<b>A</b>	<b>Summary</b>	<b>18</b>
A.1	Status . . . . .	18
A.2	Comments . . . . .	18

# 1 Front

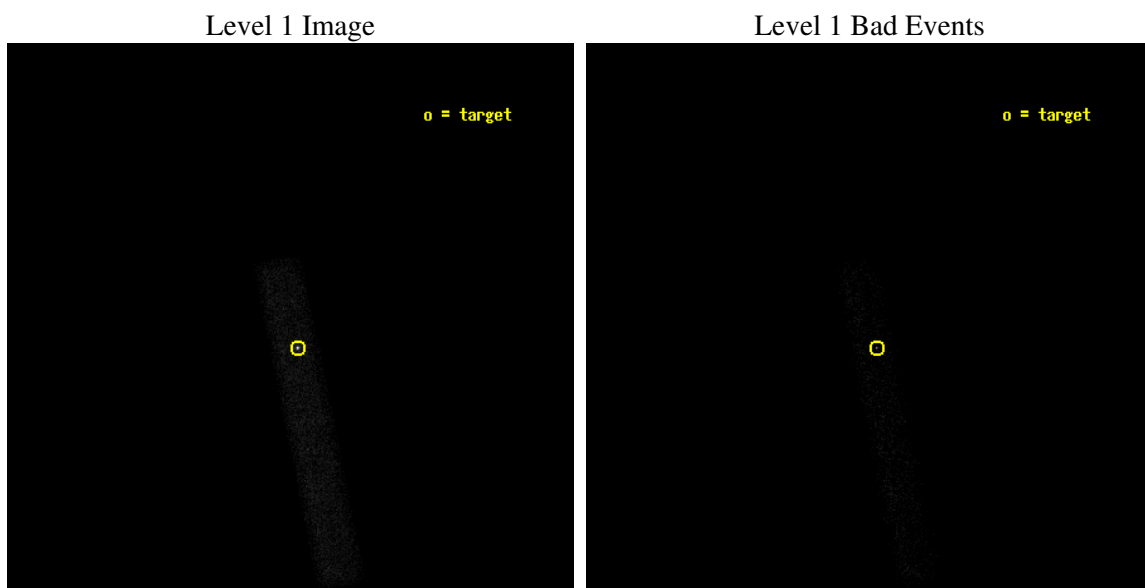
seq_num	700651
obs_id	3972
title	STRUCTURES AND SPECTRA OF EXTENDED EMISSION REGIONS IN THREE BL LAC OBJECTS
observer	Prof Mark Birkinshaw
object	PKS 2316-423
dtcycle	0
cycle	P
ra_targ	349.774167
dec_targ	-42.113333
ra_nom	349.7789131599
dec_nom	-42.104364575871
roll_nom	78.403310156196
revision	2
ontime	15149.118145734
livetime	13739.45052216
ontime7	15149.118145734
l2events	12904



## 2 OBI

### 2.1 OBI

#### 2.1.1 Images



#### 2.1.2 Bias

Chip 7



### 2.1.3 Parameters

obi_num	0
ascdsver	7.6.8
caldbver	3.2.2
date	2006-07-14T13:27:03
revision	2

sched_exp_time	15000.000000
ontime	16496.928453386
ontime7	16496.928453386
l1events	24208

### 2.1.4 Events

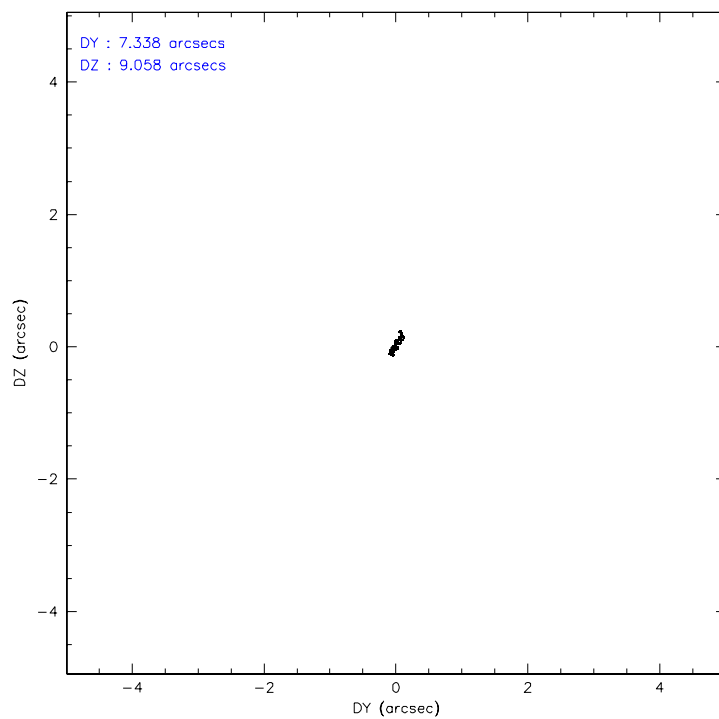
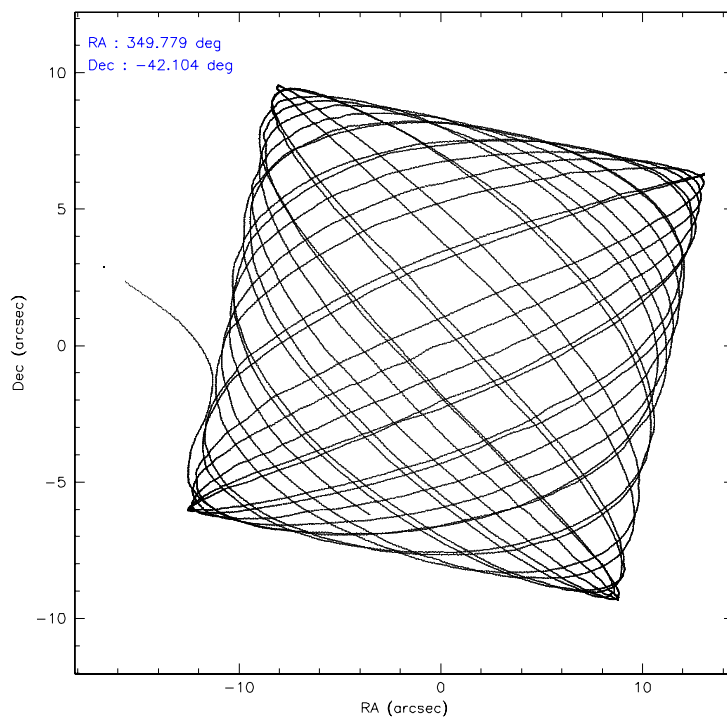
	<b>ccd 7</b>
level 1 events	24208
rejected events	10996
rejected %	45%

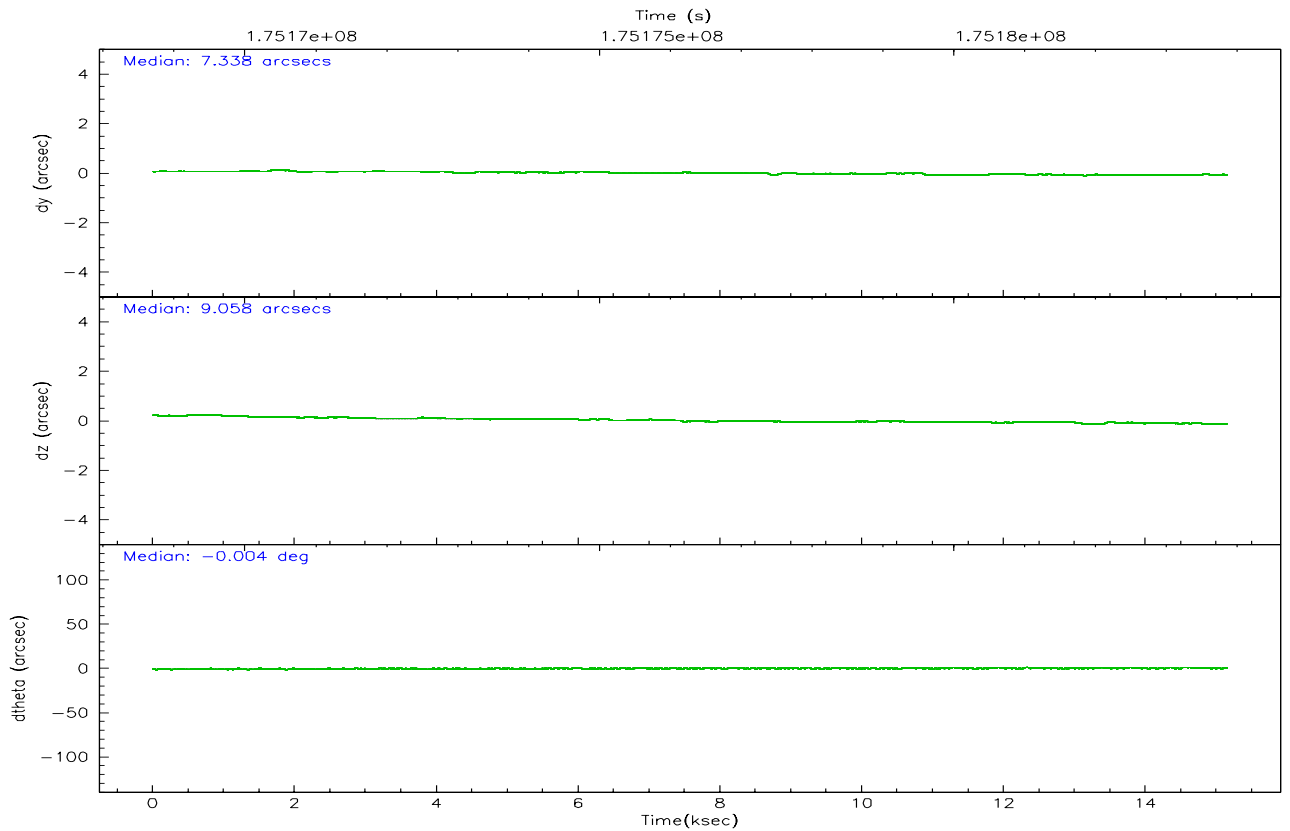
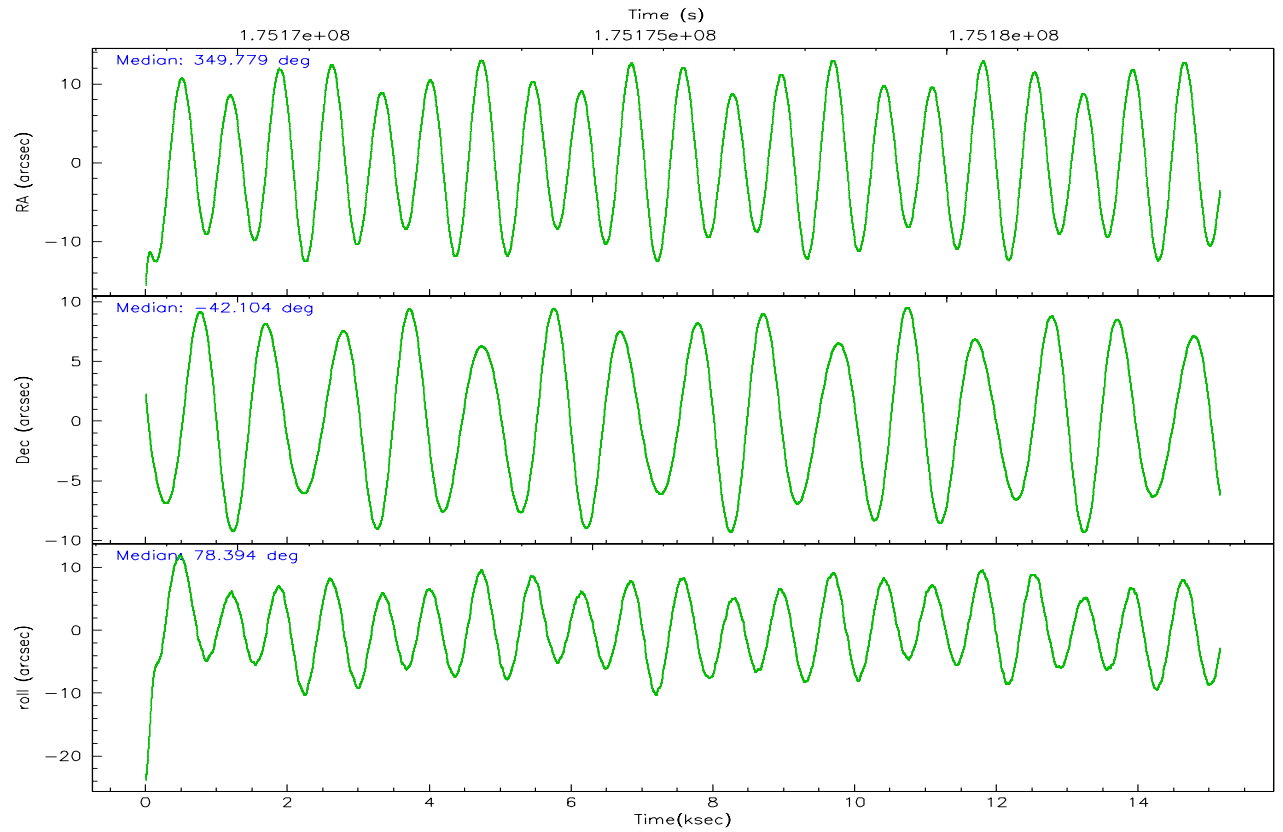
	<b>ccd 7</b>
grade 0 events	2803
	11%
grade 1 events	40
	0%
grade 2 events	3312
	13%
grade 3 events	1492
	6%
grade 4 events	1418
	5%
grade 5 events	1444
	5%
grade 6 events	4890
	20%
grade 7 events	8809
	36%

## 2.2 Compared Parameters

Parameter	Planned	Actual	Parameter	Planned	Actual
Instrument	ACIS	ACIS	Obspar format version number	6	6
Detector	ACIS-7	ACIS-7	Obspar file type	PREDICTED	ACTUAL
Grating	NONE	NONE	Obspar update status	NONE	UPDATED
Data mode	FAINT	FAINT	On-chip summing requested	N	N
Observation mode	POINTING	POINTING	Subarray requested	1/8	1/8
Pointing RA	349.791049	349.7789131598951	Subarray start row	0	449
Pointing Dec	-42.130062	-42.10436457587121	Subarray row count	1024	128
Pointing Roll	78.254829	78.40331015619611	Alternating exposures requested	N	N
SIM focus pos (mm)	-0.684267	-0.6828225247311905	Primary exposure time	0.000000	0.4
SIM defocus (mm)	0	0.001444936568705701			
SIM translation stage pos (mm)	-190.132523	-190.1400660498719			
SIM translation stage offset (mm)	0	0.00754346686406393			
Observation start time	175168861.184000	175167364.62694			
Observation start date	2003-07-21T09:59:57	2003-07-21T09:36:04			
Observation end time	175183861.184000	175184704.04018			
Observation end date	2003-07-21T14:09:57	2003-07-21T14:25:04			
Read mode	TIMED	TIMED			

## 2.3 Aspect





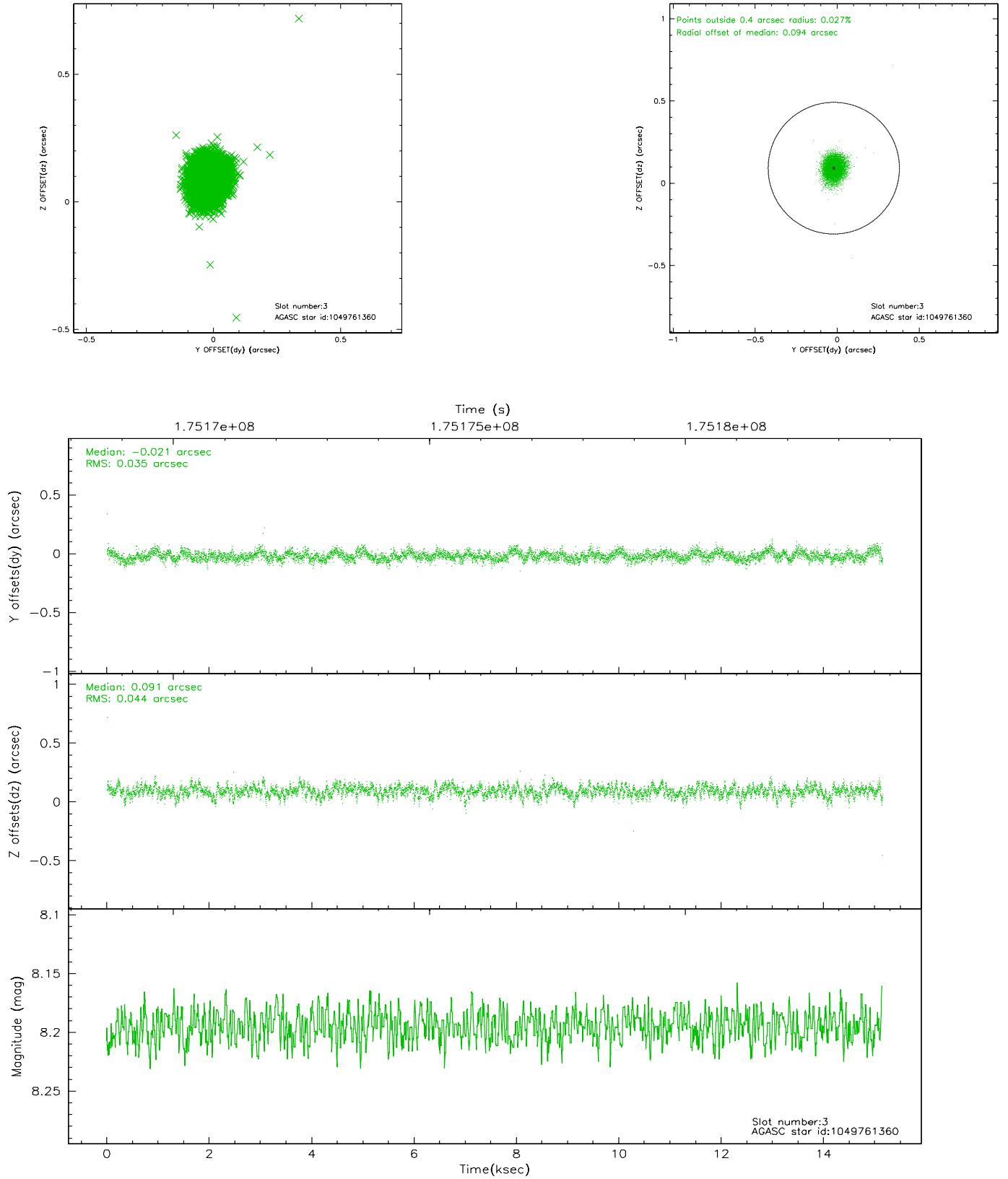
### Slot Statistics

slot	status	id	mag	n_pts	med_dy	med_dz	dr1	dr2	ra	dec	mean_y	mean_z
0	FID	ACIS-S-2	7.10	3695	-0.015	-0.007	0.006	0.011	0.000000	0.000000	-760.11	-1730.31
1	FID	ACIS-S-4	7.20	3695	0.008	0.009	0.005	0.009	0.000000	0.000000	2153.05	177.89
2	FID	ACIS-S-5	7.23	3695	-0.025	0.007	0.007	0.011	0.000000	0.000000	-1812.59	171.88
3	GUIDE	1049761360	8.19	7390	-0.021	0.091	0.058	0.096	349.951184	-41.963836	672.87	-298.15
4	GUIDE	1049761640	8.67	7387	-0.048	-0.158	0.079	0.124	349.142415	-42.207499	-631.48	1635.20
5	GUIDE	1050149120	9.15	7386	0.133	-0.166	0.096	0.157	348.946168	-42.587694	-2079.87	1854.73
6	GUIDE	1050681984	10.16	7384	-0.049	0.179	0.164	0.269	350.530932	-42.346770	-371.23	-2087.35
7	GUIDE	1051067456	9.44	7322	-0.021	0.055	0.099	0.157	350.464001	-42.838254	-2140.93	-2260.11

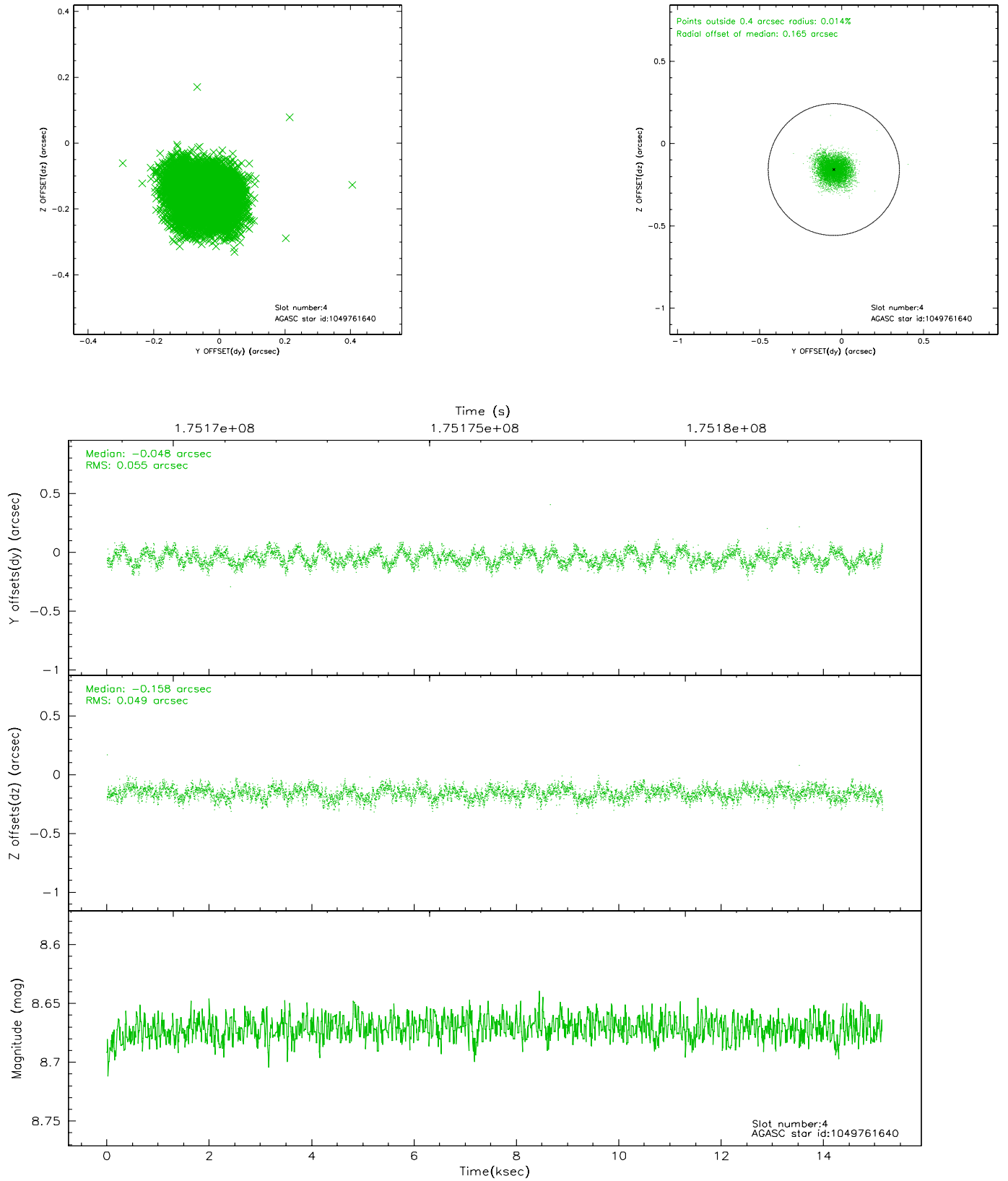


## 2.4 Star Slots

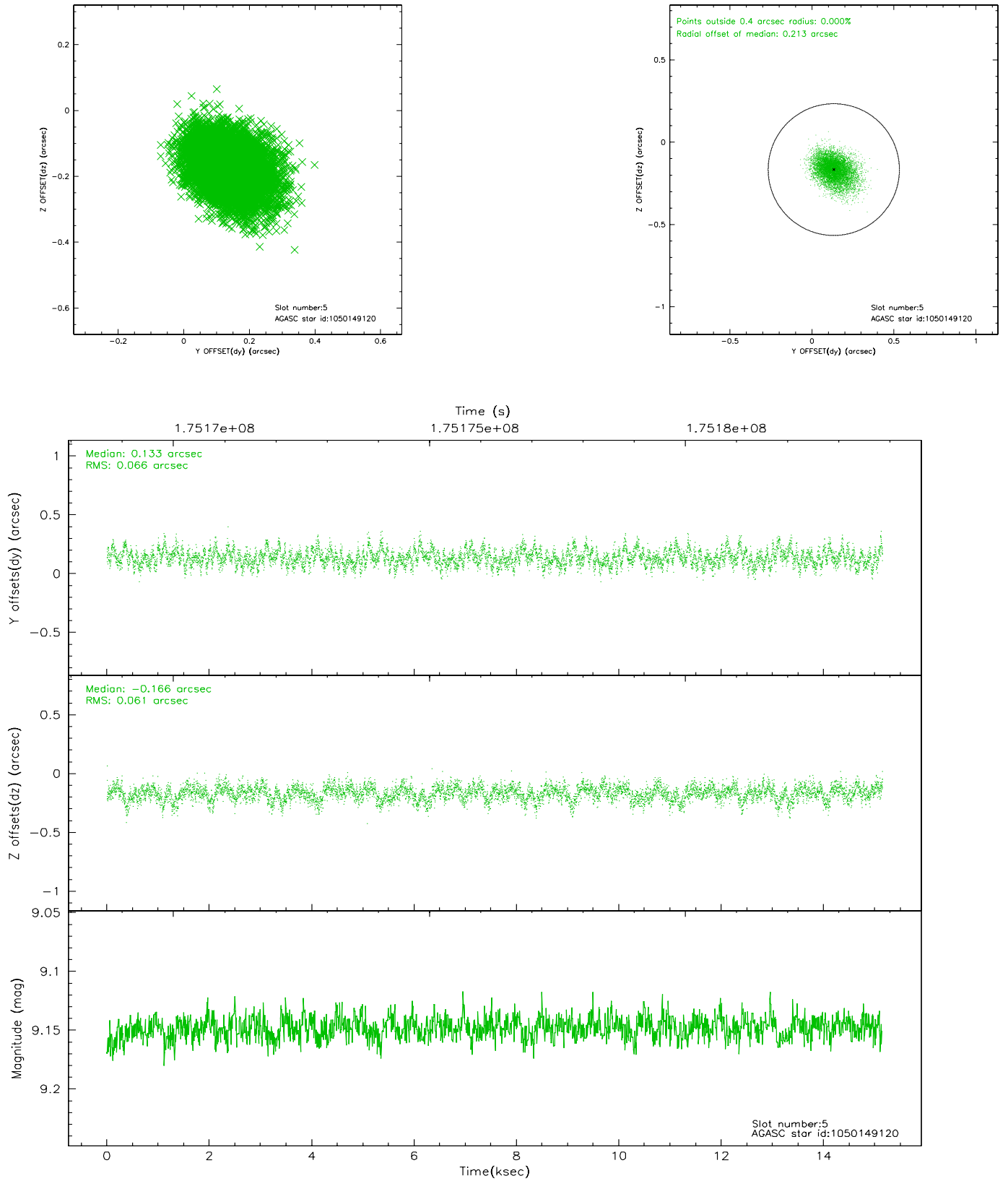
### 2.4.1 Slot 3



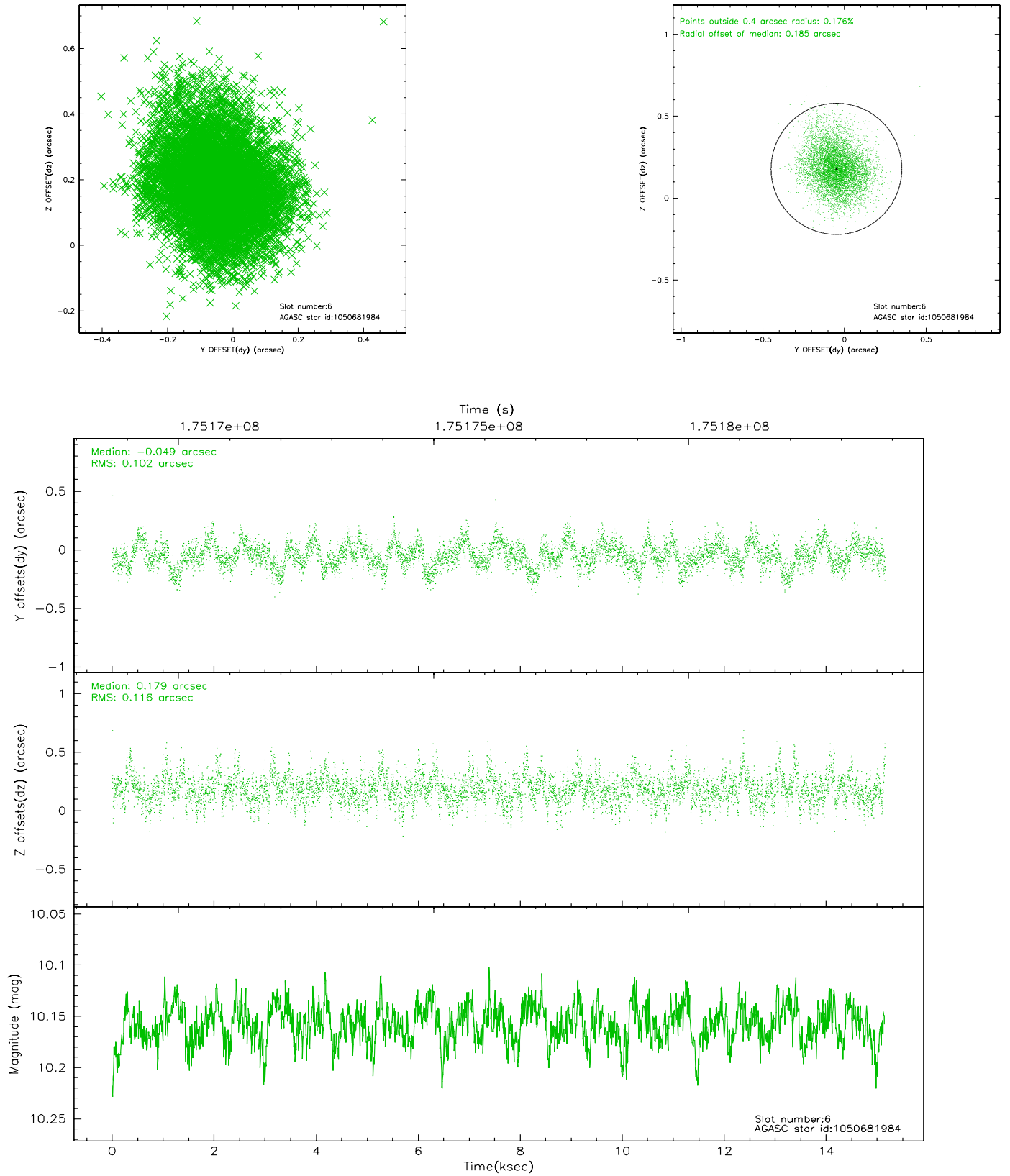
## 2.4.2 Slot 4



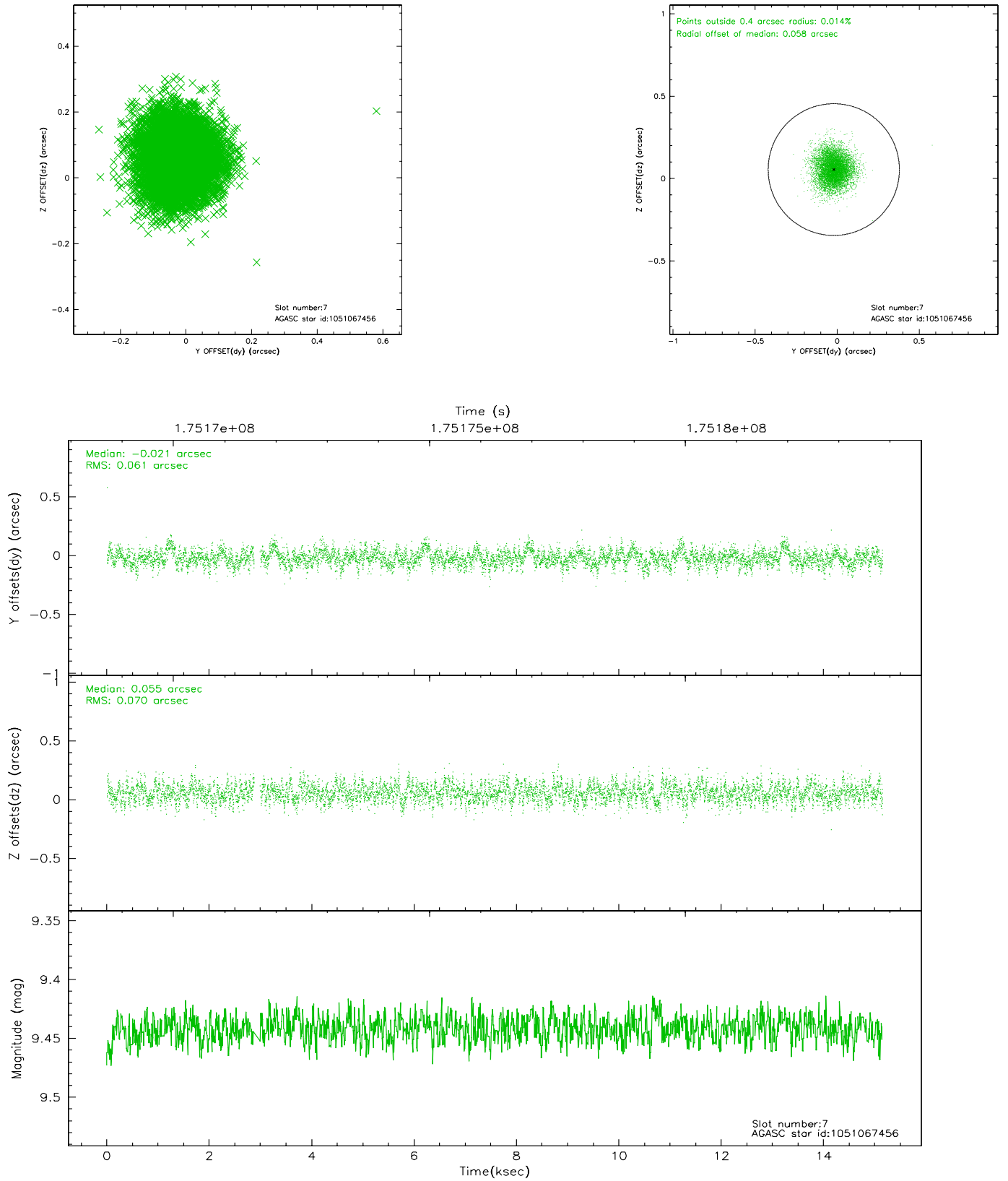
### 2.4.3 Slot 5



## 2.4.4 Slot 6

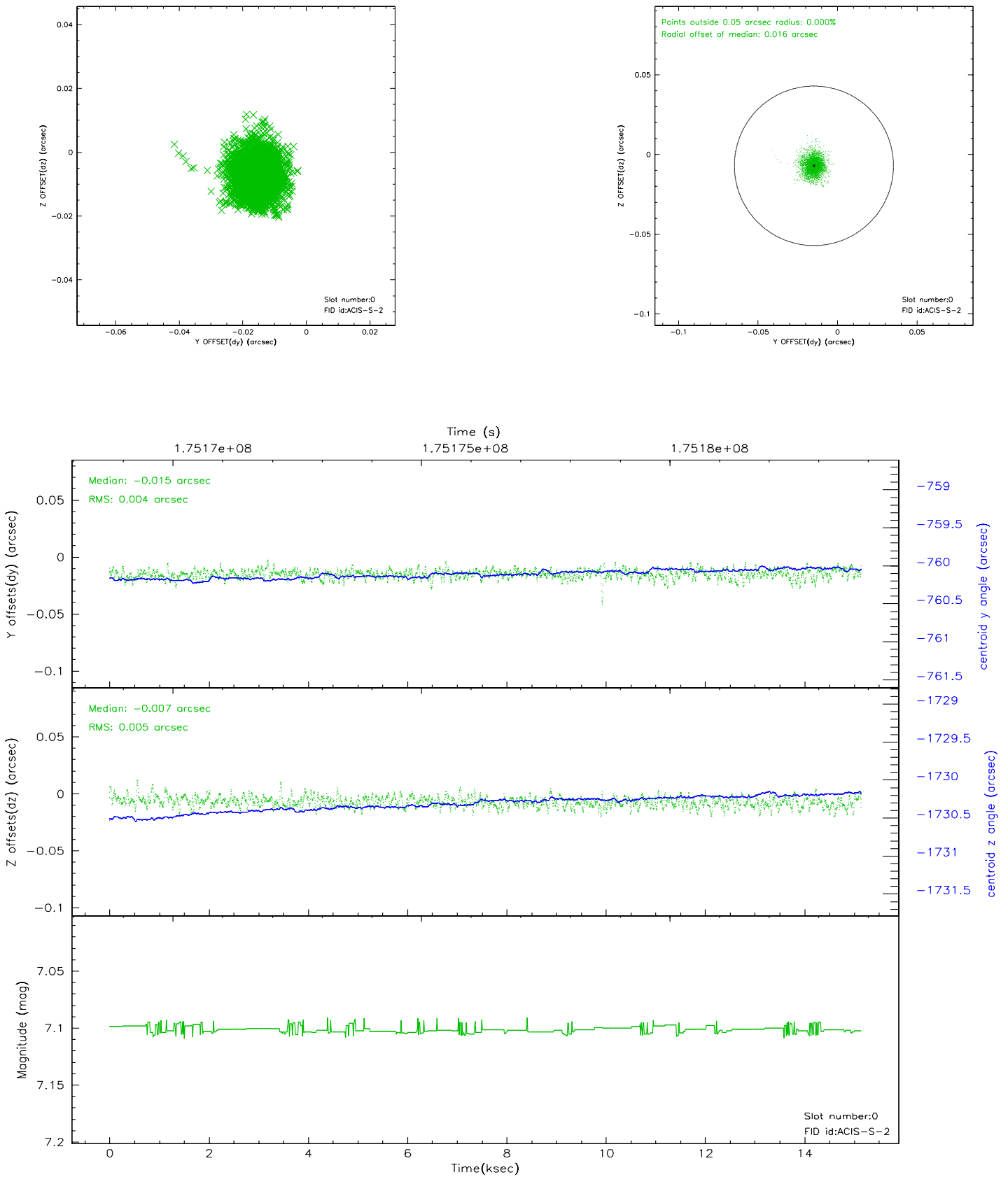


## 2.4.5 Slot 7

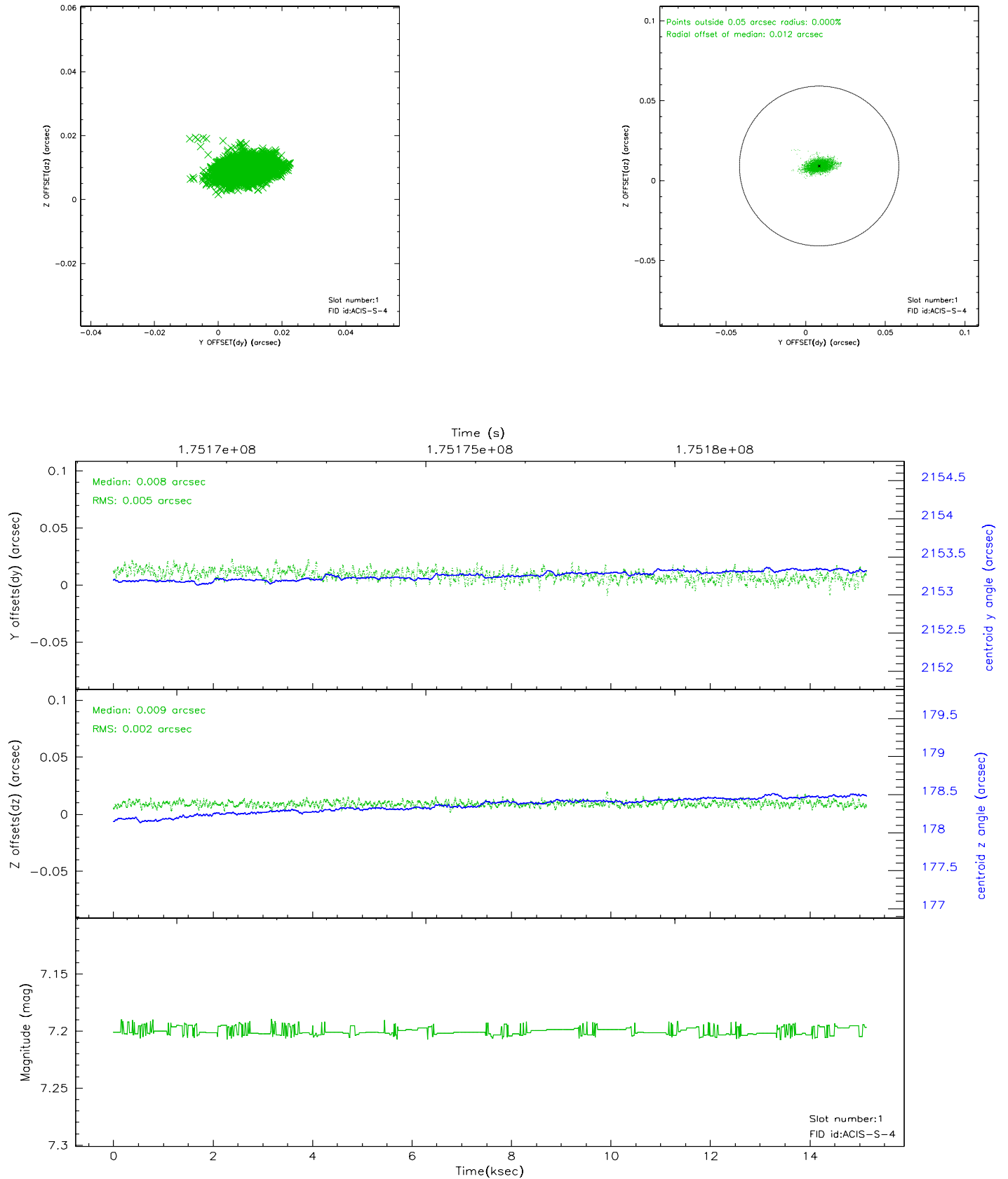


## 2.5 FID Slots

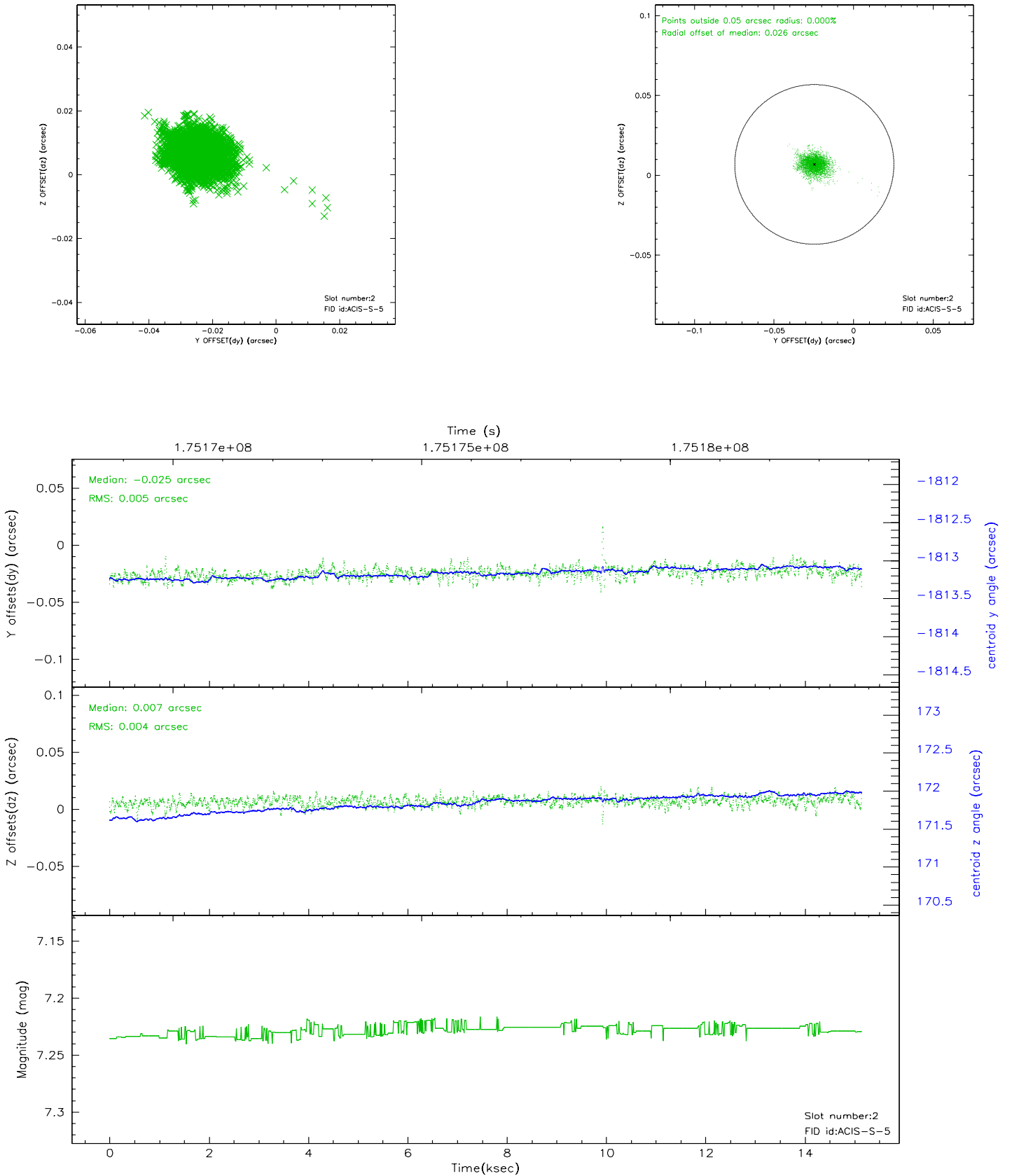
### 2.5.1 Slot 0



## 2.5.2 Slot 1



### 2.5.3 Slot 2





### 3 Point Sources

## A Summary

### A.1 Status

V&V Scientist	Beth Sundheim
V&V Date (YYYY-MM-DD)	2006.07.14
V&V Edition	1
V&V Disposition and Status	OK
V&V Charge Time	15.149

### A.2 Comments