

V&V Reference Report

L2 ASCDS Version : 7.6.8

Observation 3968 - L2 Version 001
Chandra X-Ray Center

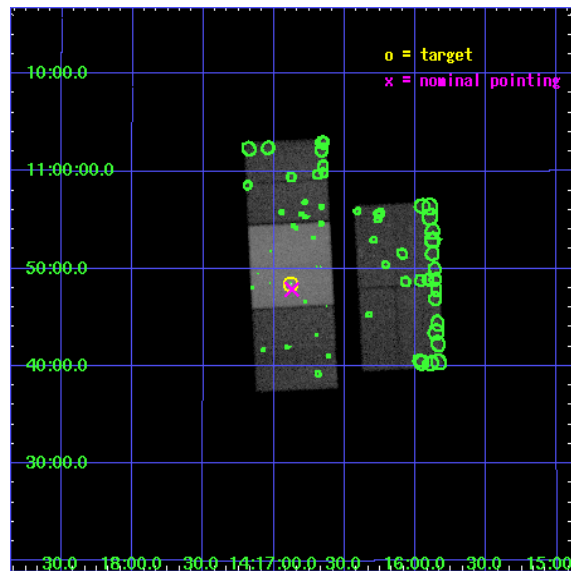
L2 Processing Date : Jul 7 2006

Contents

1	Front	2
2	OBI	3
2.1	OBI	3
2.1.1	Images	3
2.1.2	Bias	3
2.1.3	Parameters	4
2.1.4	Events	4
2.2	Compared Parameters	5
2.3	Aspect	6
2.4	Star Slots	9
2.4.1	Slot 3	9
2.4.2	Slot 4	10
2.4.3	Slot 5	11
2.4.4	Slot 6	12
2.4.5	Slot 7	13
2.5	FID Slots	14
2.5.1	Slot 0	14
2.5.2	Slot 1	15
2.5.3	Slot 2	16
3	Point Sources	17
A	Summary	18
A.1	Status	18
A.2	Comments	18

1 Front

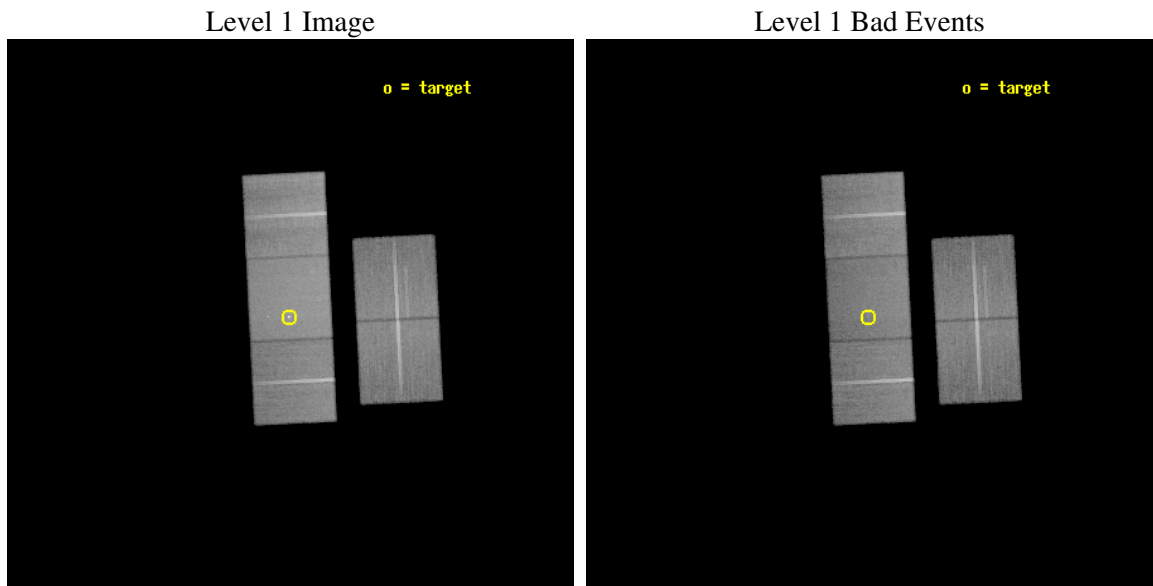
seq_num	700647
obs_id	3968
title	BULK DECELERATION AND PARTICLE ACCELERATION IN THE INNER JETS OF 3C296
observer	Dr Martin Hardcastle
object	3C296
dtcycle	0
cycle	P
ra_targ	214.220417
dec_targ	10.807389
ra_nom	214.21821607136
dec_nom	10.797978857363
roll_nom	267.15781841063
revision	2
ontime	50083.599903703
livetime	49429.220799951
ontime2	50011.880292565
ontime3	50011.962452322
ontime6	50015.144402683
ontime7	50083.599903703
ontime8	50017.639548659
l2events	309817



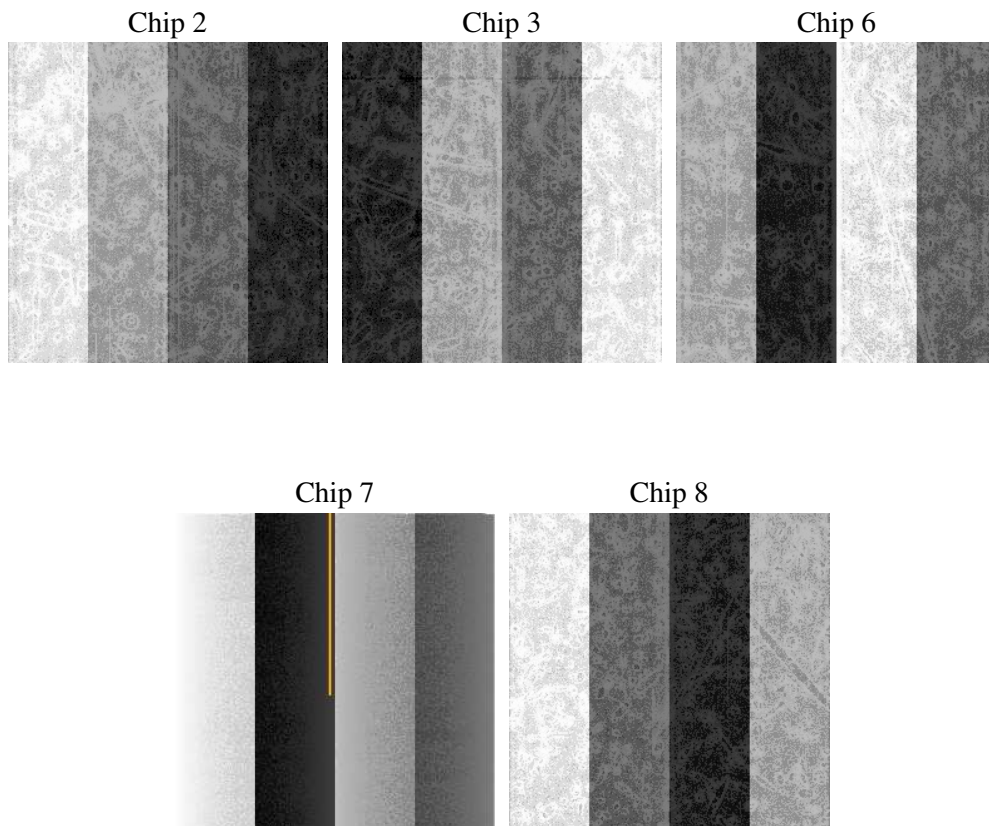
2 OBI

2.1 OBI

2.1.1 Images



2.1.2 Bias



2.1.3 Parameters

obi_num	2
ascdsver	7.6.8
caldbver	3.2.2
date	2006-07-07T21:35:43
revision	2

sched_exp_time	50000.000000
ontime	50837.097320706
ontime2	50274.860486895
ontime3	50281.142626762
ontime6	50303.129797131
ontime7	50837.097320706
ontime8	50287.42494607
l1events	1823958

2.1.4 Events

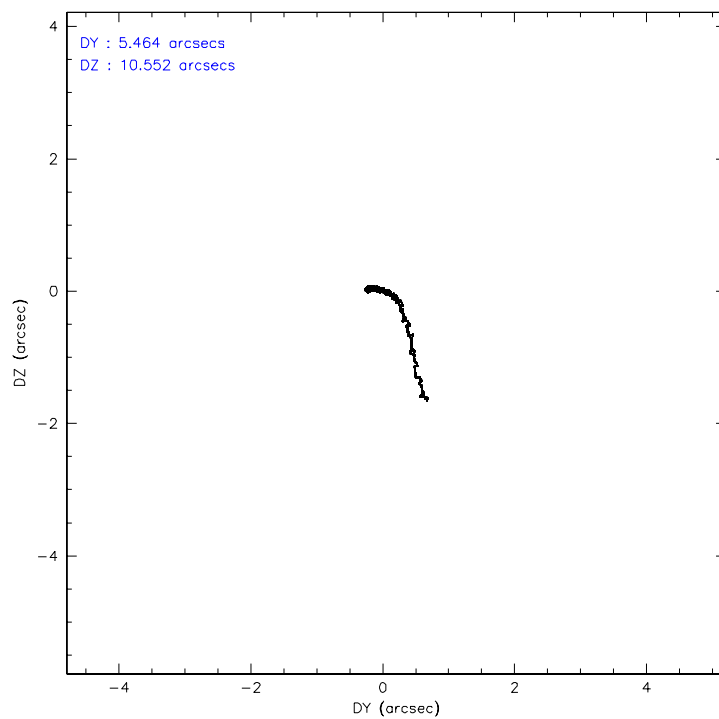
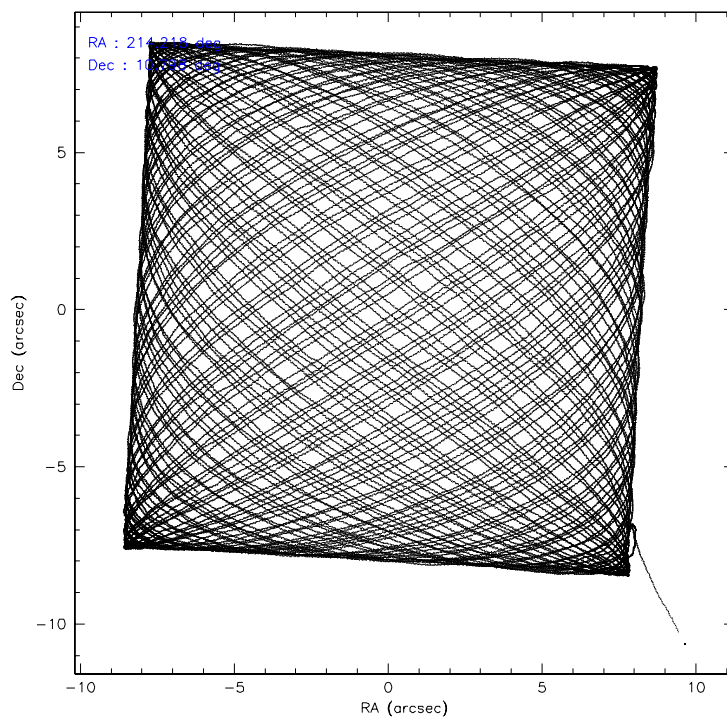
	ccd 2	ccd 3	ccd 6	ccd 7	ccd 8
level 1 events	313124	315209	334663	449906	411056
rejected events	275435	277503	294742	277200	327624
rejected %	87%	88%	88%	61%	79%

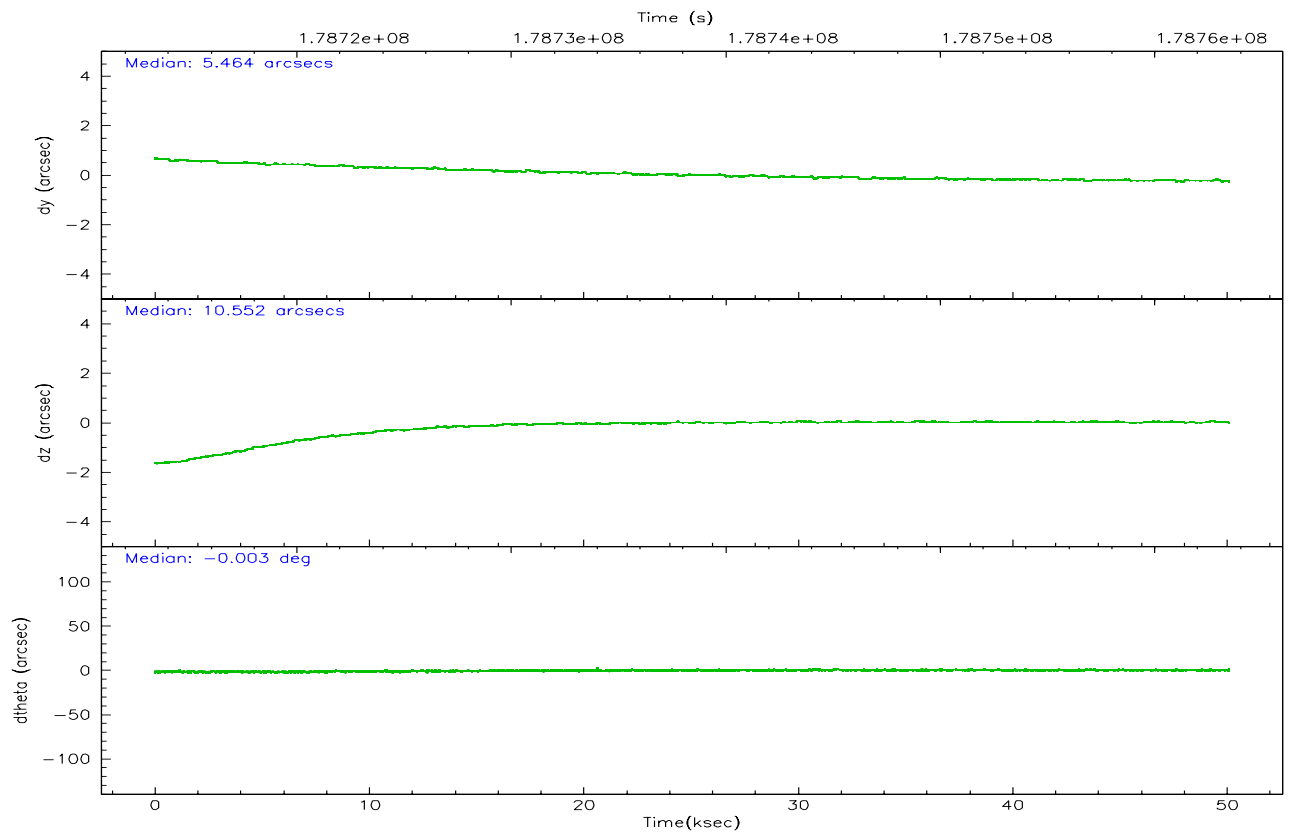
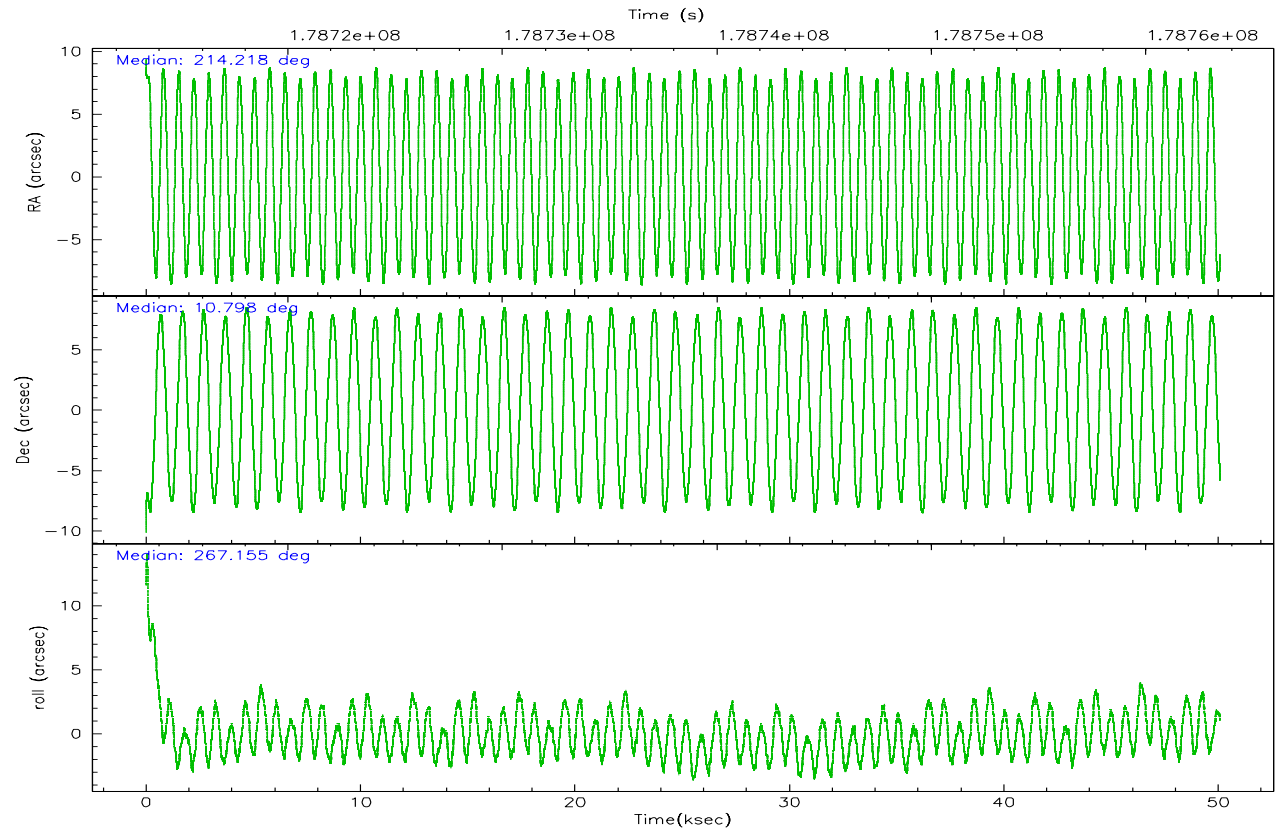
	ccd 2	ccd 3	ccd 6	ccd 7	ccd 8
grade 0 events	21328	21318	21289	16347	32531
	6%	6%	6%	3%	7%
grade 1 events	204	210	150	275	310
	0%	0%	0%	0%	0%
grade 2 events	8428	8240	9115	46920	18674
	2%	2%	2%	10%	4%
grade 3 events	4146	4134	4188	10726	9210
	1%	1%	1%	2%	2%
grade 4 events	3945	4142	4155	10472	8580
	1%	1%	1%	2%	2%
grade 5 events	11873	13517	14490	28305	18806
	3%	4%	4%	6%	4%
grade 6 events	6913	7307	8728	102501	22015
	2%	2%	2%	22%	5%
grade 7 events	256287	256341	272548	234360	300930
	81%	81%	81%	52%	73%

2.2 Compared Parameters

Parameter	Planned	Actual	Parameter	Planned	Actual
Instrument	ACIS	ACIS	Obspar format version number	6	6
Detector	ACIS-23678	ACIS-23678	Obspar file type	PREDICTED	ACTUAL
Grating	NONE	NONE	Obspar update status	NONE	UPDATED
Data mode	VFAINT	VFAINT	On-chip summing requested	N	N
Observation mode	POINTING	POINTING	Subarray requested	NONE	NONE
Pointing RA	214.205228	214.2182160713586	Alternating exposures requested	N	N
Pointing Dec	10.822017	10.79797885736297	Primary exposure time	0.000000	3.1
Pointing Roll	267.003623	267.1578184106303			
SIM focus pos (mm)	-0.684267	-0.6828225247311905			
SIM defocus (mm)	0	0.001444936568705701			
SIM translation stage pos (mm)	-190.132523	-190.1400660498719			
SIM translation stage offset (mm)	0	0.00754346686406393			
Observation start time	178713467.184000	178712101.26587			
Observation start date	2003-08-31T10:36:43	2003-08-31T10:15:01			
Observation end time	178763467.184000	178764334.24311			
Observation end date	2003-09-01T00:30:03	2003-09-01T00:45:34			
Read mode	TIMED	TIMED			

2.3 Aspect



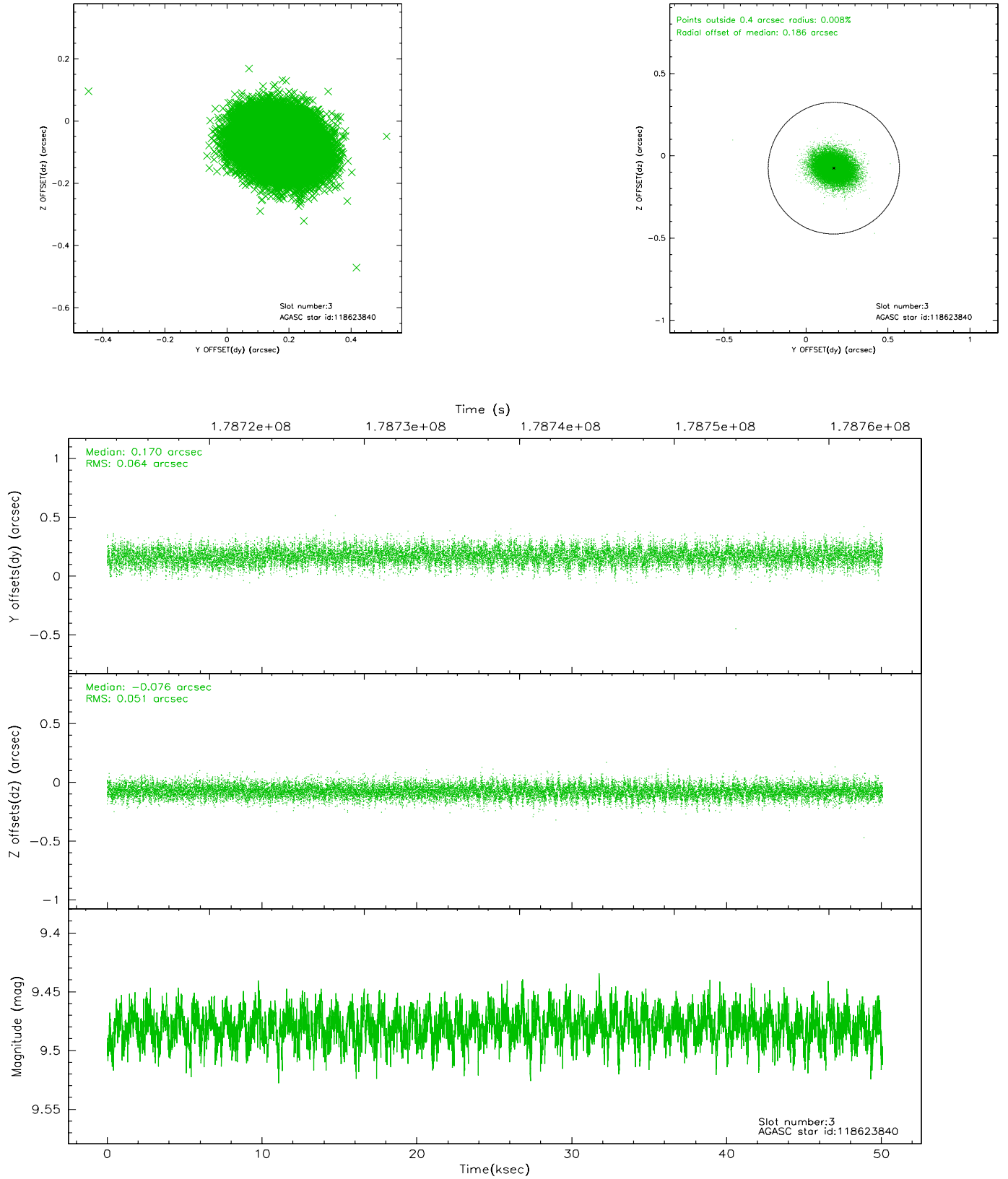


Slot Statistics

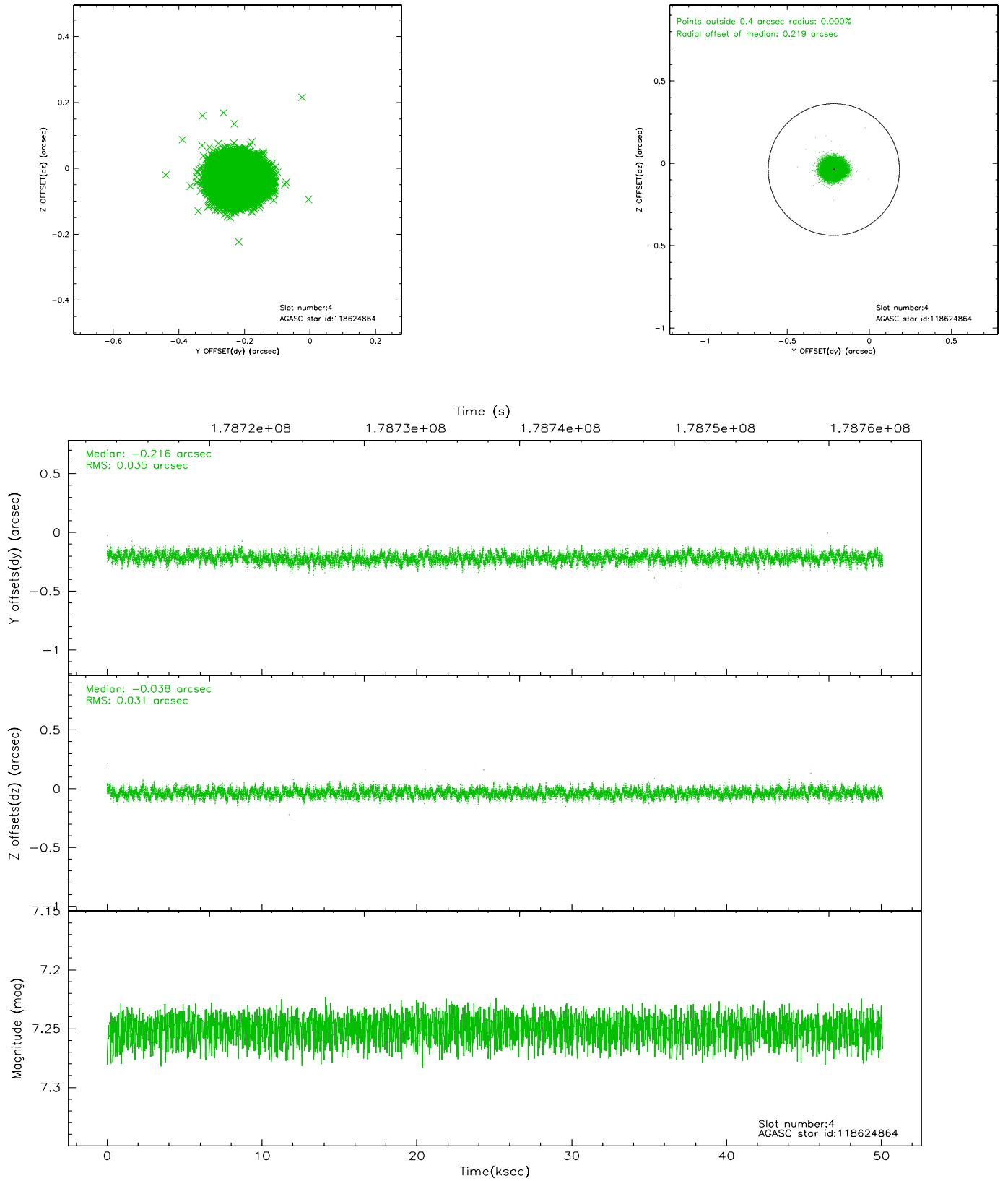
slot	status	id	mag	n_pts	med_dy	med_dz	dr1	dr2	ra	dec	mean_y	mean_z
0	FID	ACIS-S-1	7.18	12217	0.015	-0.004	0.010	0.047	0.000000	0.000000	937.74	-1727.25
1	FID	ACIS-S-2	7.10	12216	-0.037	-0.020	0.008	0.014	0.000000	0.000000	-758.22	-1731.74
2	FID	ACIS-S-6	7.34	12216	0.001	0.030	0.009	0.058	0.000000	0.000000	403.48	814.15
3	GUIDE	118623840	9.48	24417	0.170	-0.076	0.087	0.143	214.206173	10.286719	1924.62	104.24
4	GUIDE	118624864	7.25	24435	-0.216	-0.038	0.050	0.080	214.403642	11.335239	-1881.87	602.71
5	GUIDE	119539296	9.40	24426	0.099	0.202	0.083	0.134	214.702777	10.373443	1519.31	1844.33
6	GUIDE	119539624	7.49	24434	0.033	-0.064	0.064	0.099	214.648751	10.510494	1036.99	1626.55
7	GUIDE	118627920	9.53	24419	-0.086	-0.030	0.100	0.161	213.859680	11.463647	-2243.51	-1338.26

2.4 Star Slots

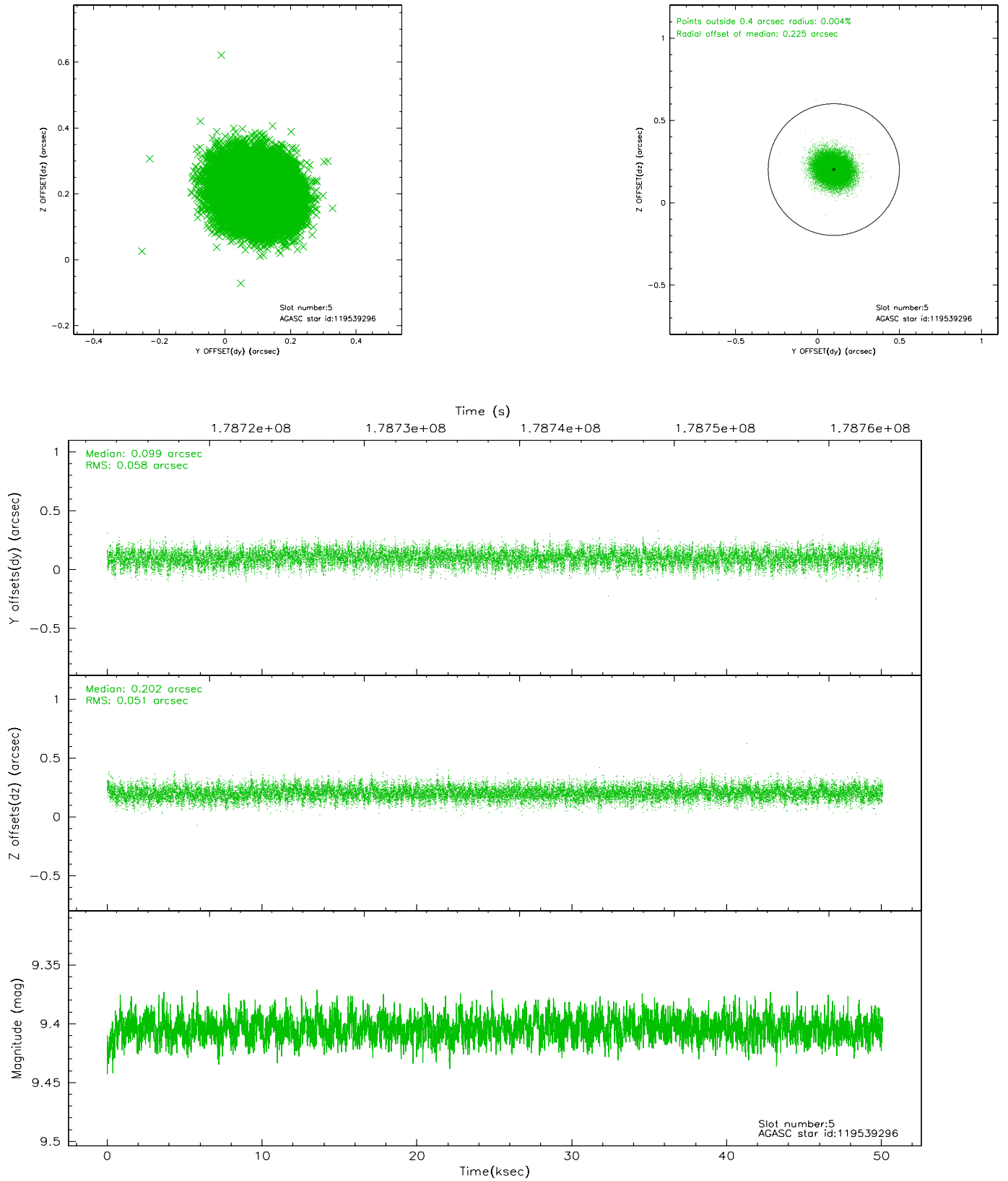
2.4.1 Slot 3



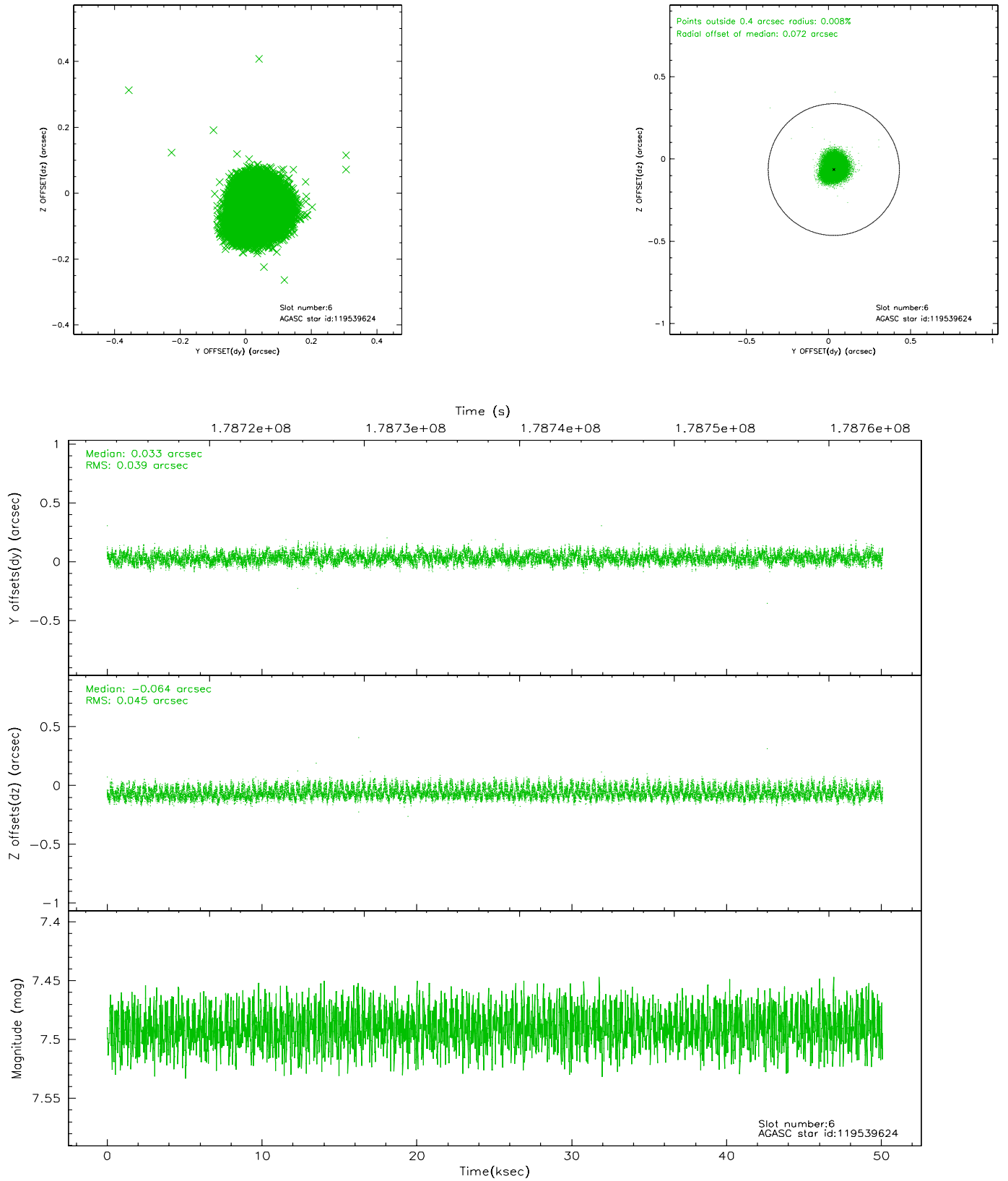
2.4.2 Slot 4



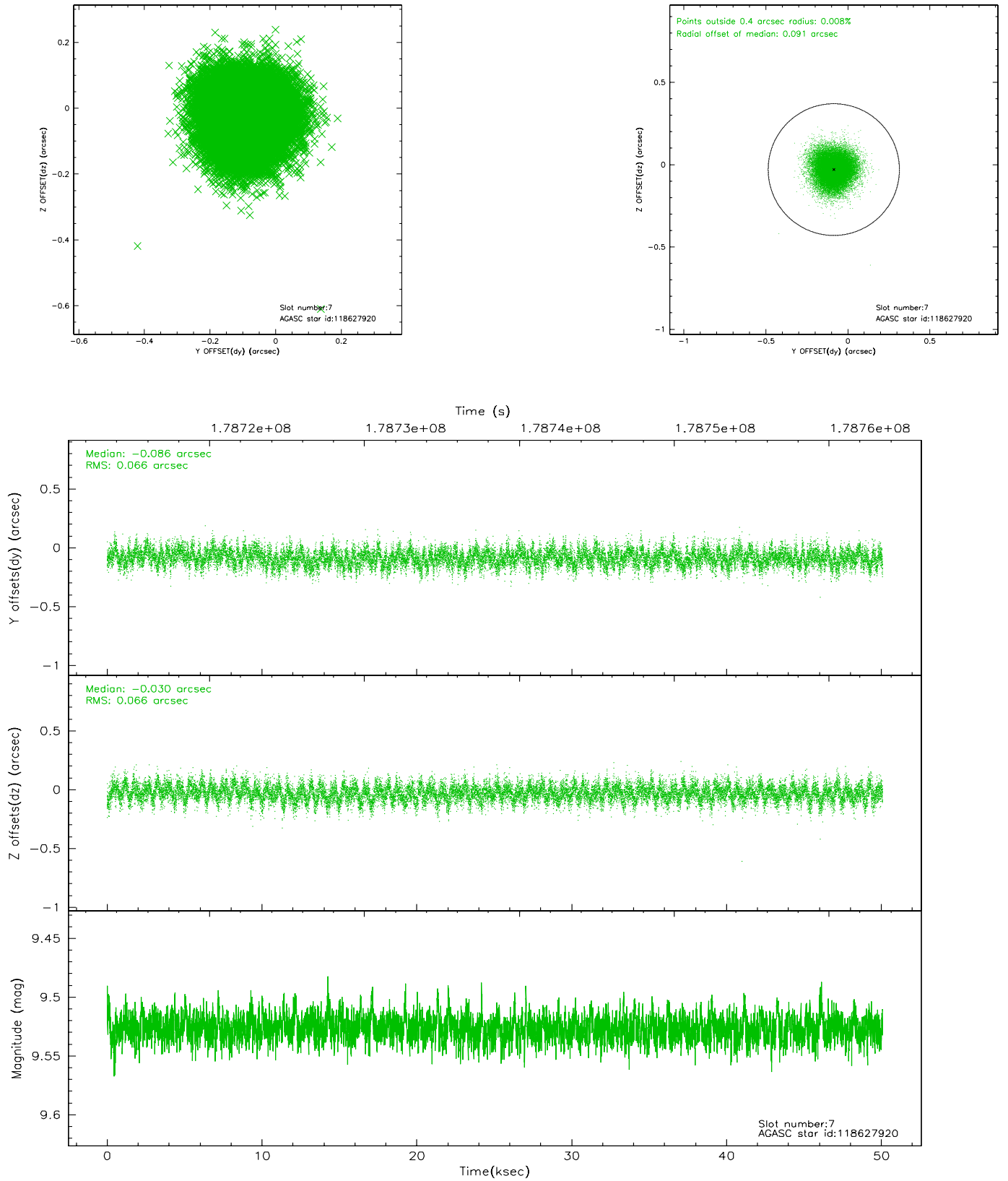
2.4.3 Slot 5



2.4.4 Slot 6

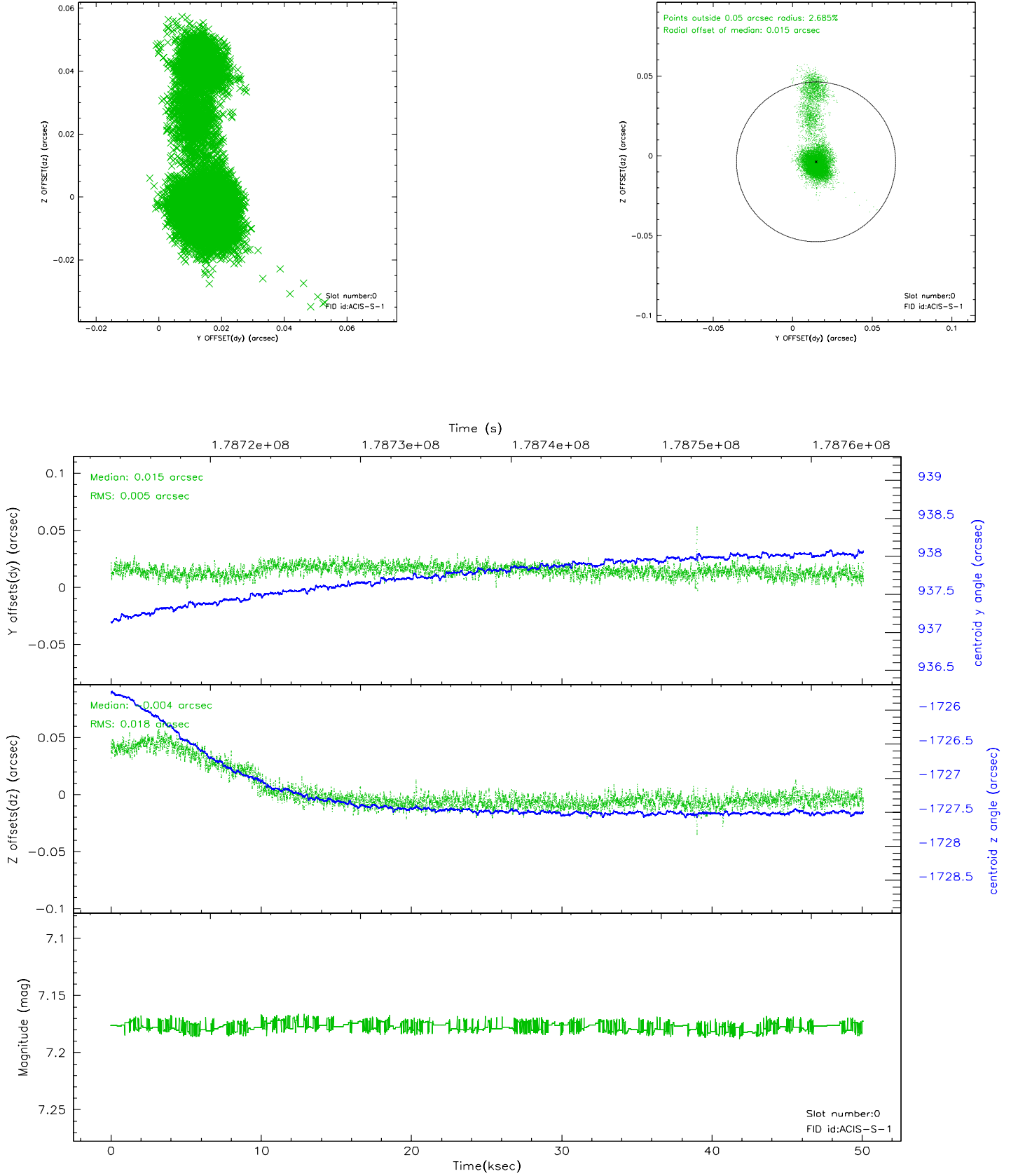


2.4.5 Slot 7

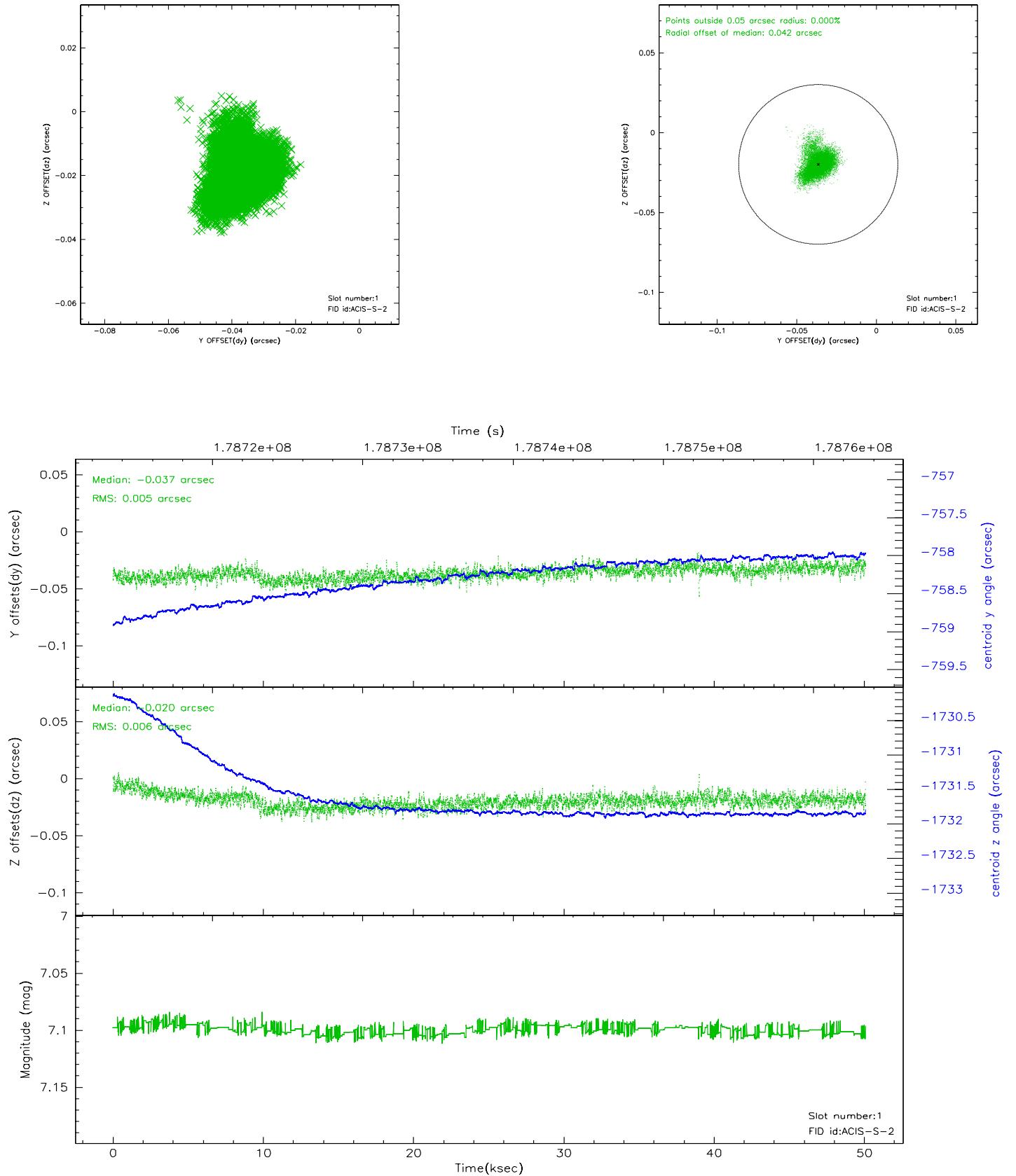


2.5 FID Slots

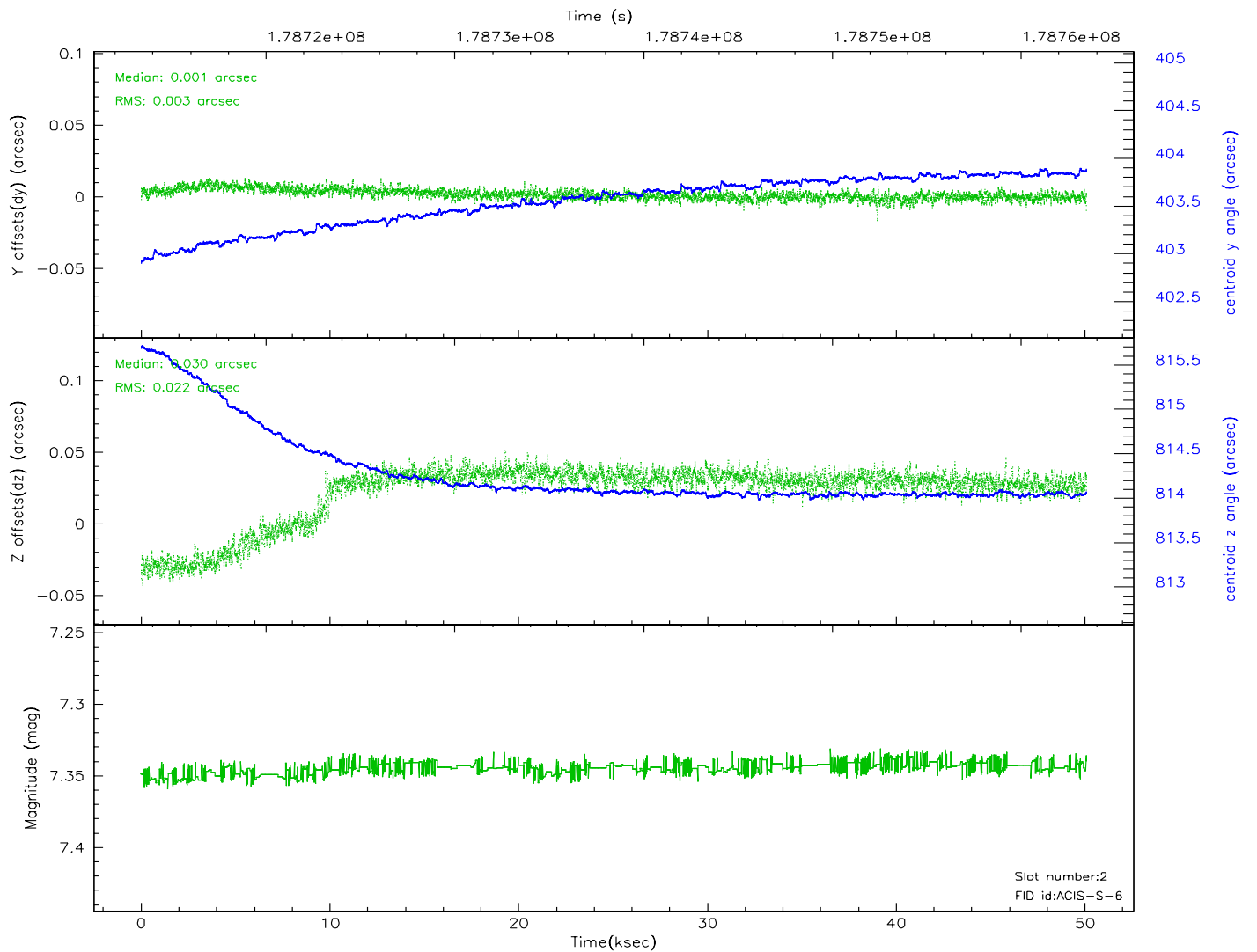
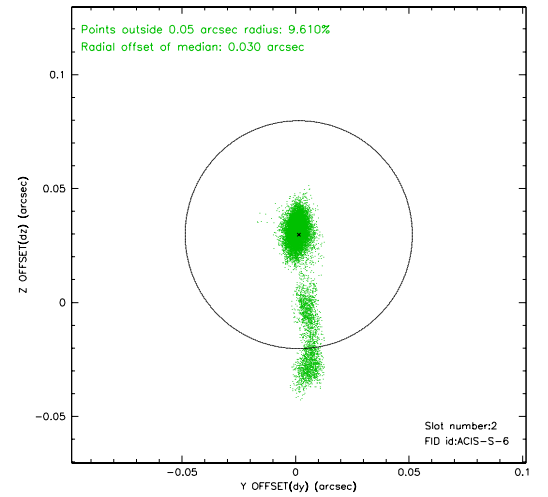
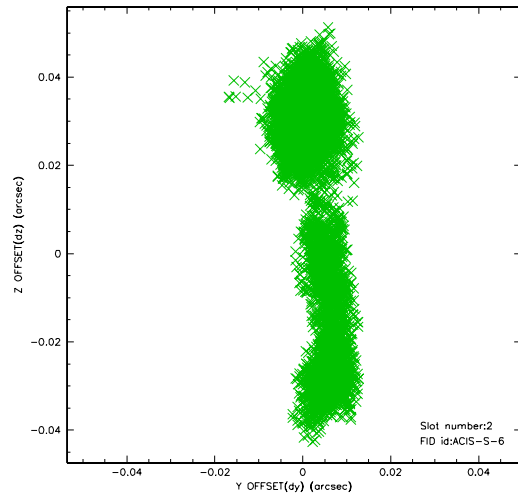
2.5.1 Slot 0



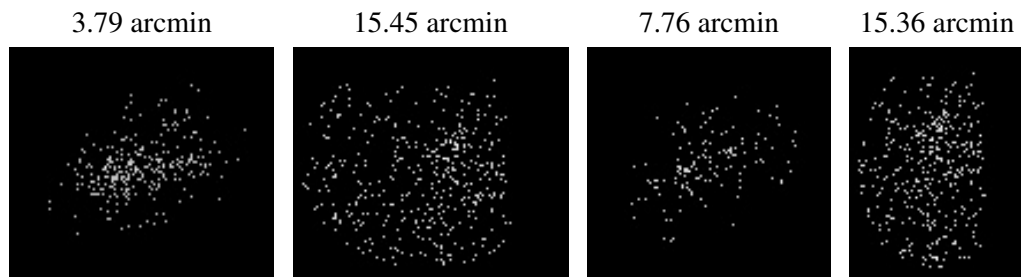
2.5.2 Slot 1



2.5.3 Slot 2



3 Point Sources



A Summary

A.1 Status

V&V Scientist	Jen Lauer
V&V Date (YYYY-MM-DD)	2006.07.10
V&V Edition	1
V&V Disposition and Status	OK
V&V Charge Time	50.083

A.2 Comments

Roll preference met.