

V&V Reference Report

L2 ASCDS Version : 7.6.9

Observation 3961 - L2 Version 001
Chandra X-Ray Center

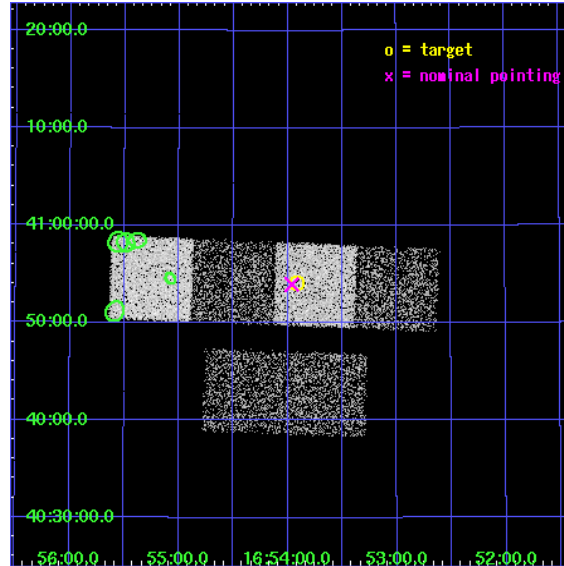
L2 Processing Date : Oct 14 2006

Contents

1	Front	2
2	OBI	3
2.1	OBI	3
2.1.1	Images	3
2.1.2	Bias	3
2.1.3	Parameters	4
2.1.4	Events	4
2.2	Compared Parameters	5
2.3	Aspect	6
2.4	Star Slots	9
2.4.1	Slot 3	9
2.4.2	Slot 4	10
2.4.3	Slot 5	11
2.4.4	Slot 6	12
2.5	FID Slots	13
2.5.1	Slot 0	13
2.5.2	Slot 1	14
2.5.3	Slot 2	15
3	Point Sources	16
A	Summary	17
A.1	Status	17
A.2	Comments	17

1 Front

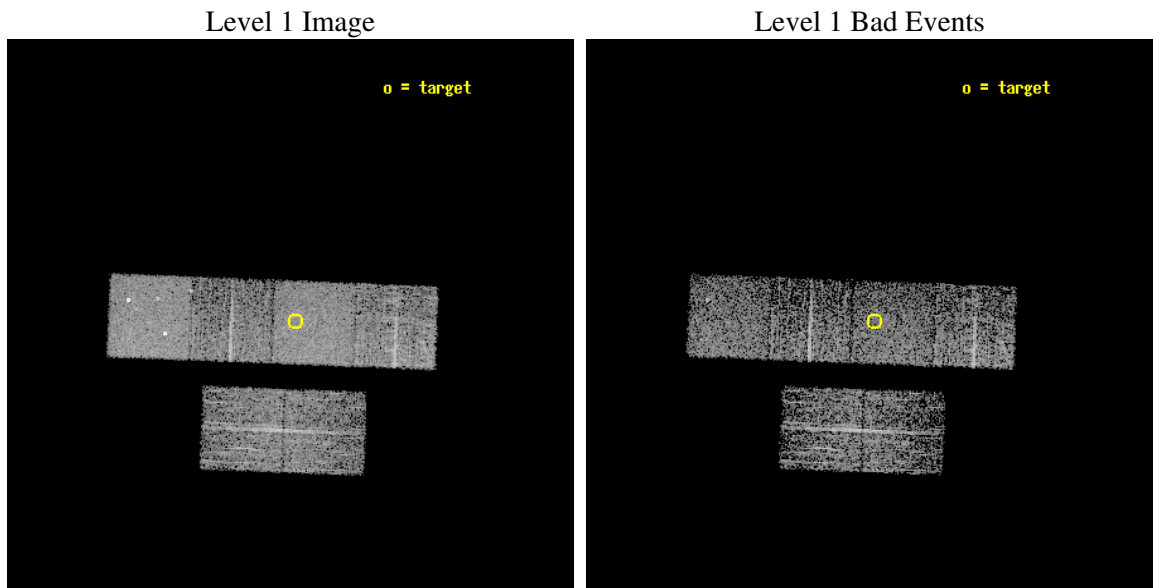
seq_num	700640
obs_id	3961
title	A CHANDRA AND XMM-NEWTON STUDY OF THE MOST DISTANT QUASARS: X-RAYING THE FIRST MASSIVE BLACK HOLES
observer	Prof. William Brandt
object	SDSS J165354+405402
dtcycle	0
cycle	P
ra_targ	253.4775
dec_targ	40.900611
ra_nom	253.49040176701
dec_nom	40.899287379065
roll_nom	2.2253038346827
revision	2
ontime	3155.199988246
livetime	3115.2469461615
ontime2	3155.199988246
ontime3	3155.199988246
ontime5	3155.199988246
ontime6	3155.199988246
ontime7	3155.199988246
ontime8	3155.199988246
l2events	29205



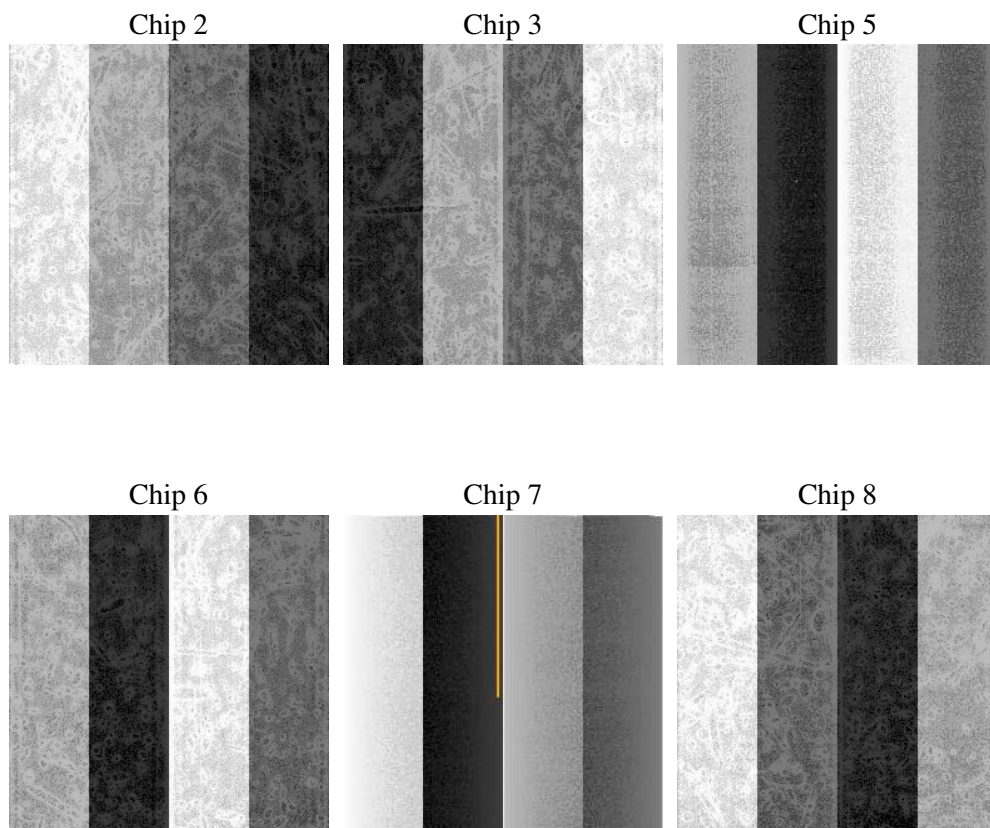
2 OBI

2.1 OBI

2.1.1 Images



2.1.2 Bias



2.1.3 Parameters

obi_num	0
ascdsver	7.6.9
caldsver	3.2.3
date	2006-10-14T20:58:55
revision	2

sched_exp_time	3200.000000
ontime	3159.9745219648
ontime2	3159.9744920433
ontime3	3163.2155121565
ontime5	3159.9745219648
ontime6	3163.2155121565
ontime7	3159.9745219648
ontime8	3163.2155121565
l1events	135970

2.1.4 Events

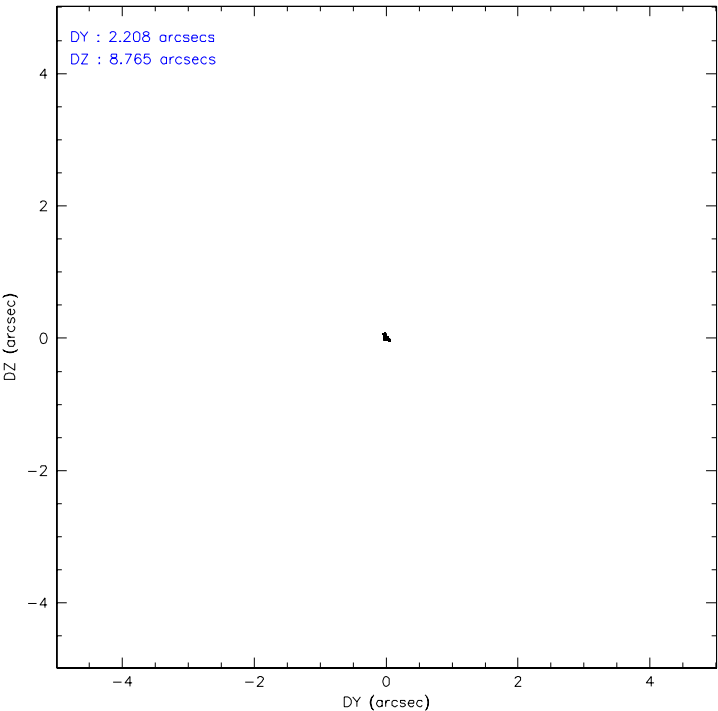
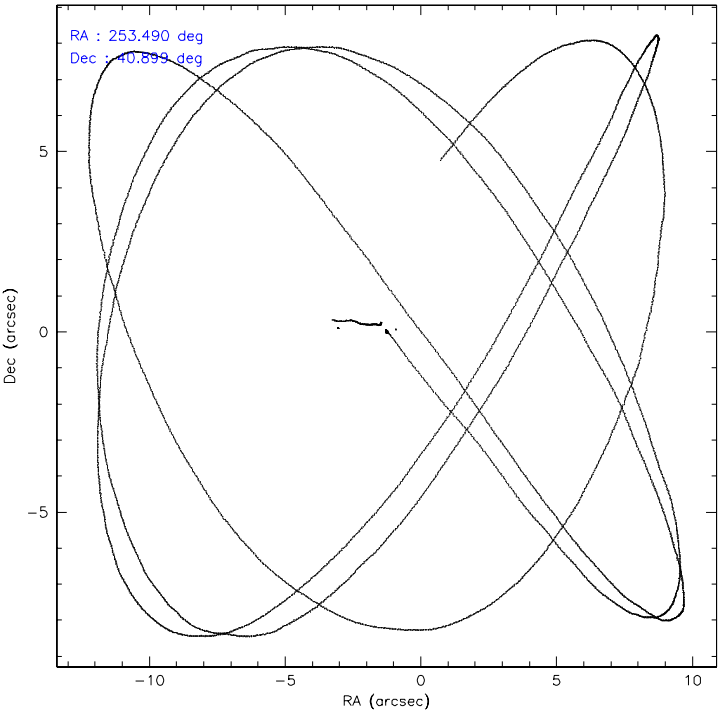
	ccd 2	ccd 3	ccd 5	ccd 6	ccd 7	ccd 8
level 1 events	20610	18223	29481	18818	25692	23146
rejected events	18395	15968	16114	16504	15883	18651
rejected %	89%	87%	54%	87%	61%	80%

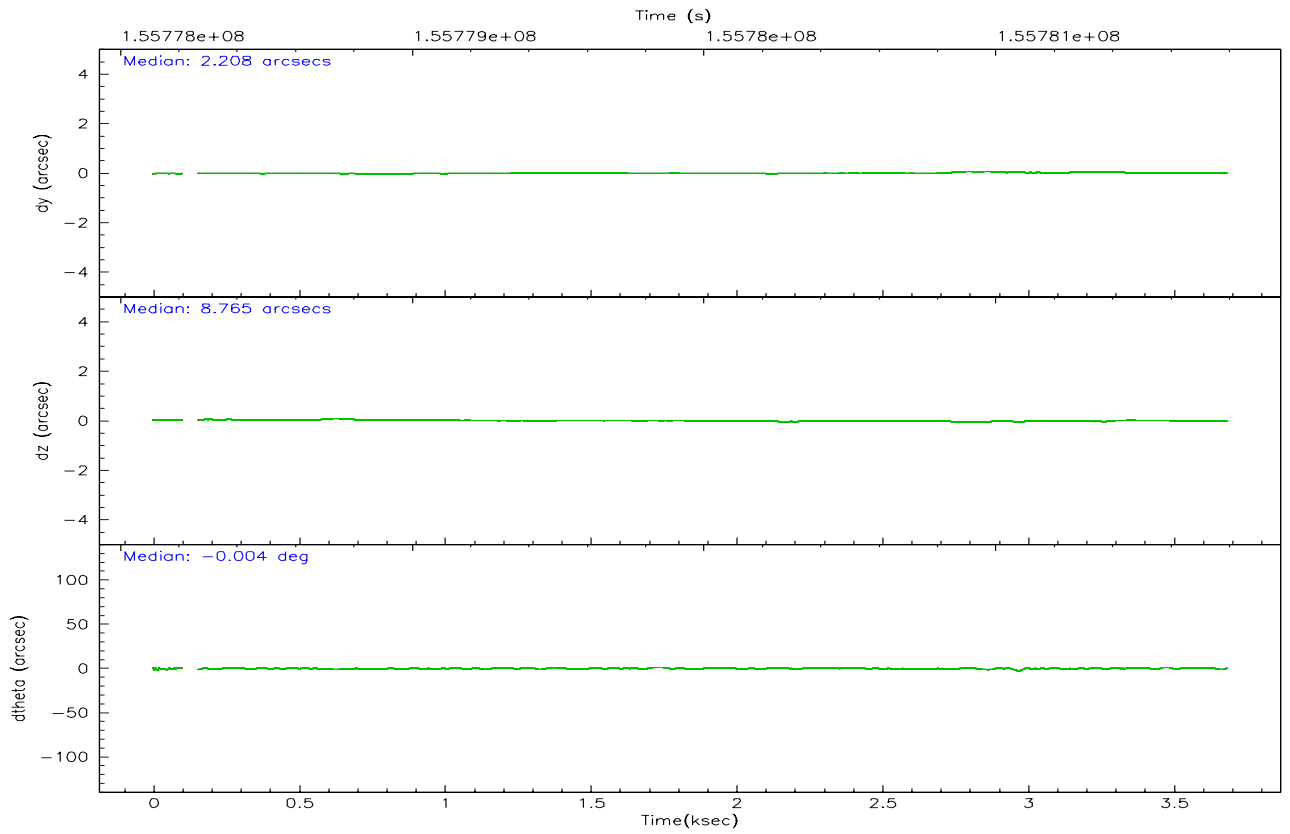
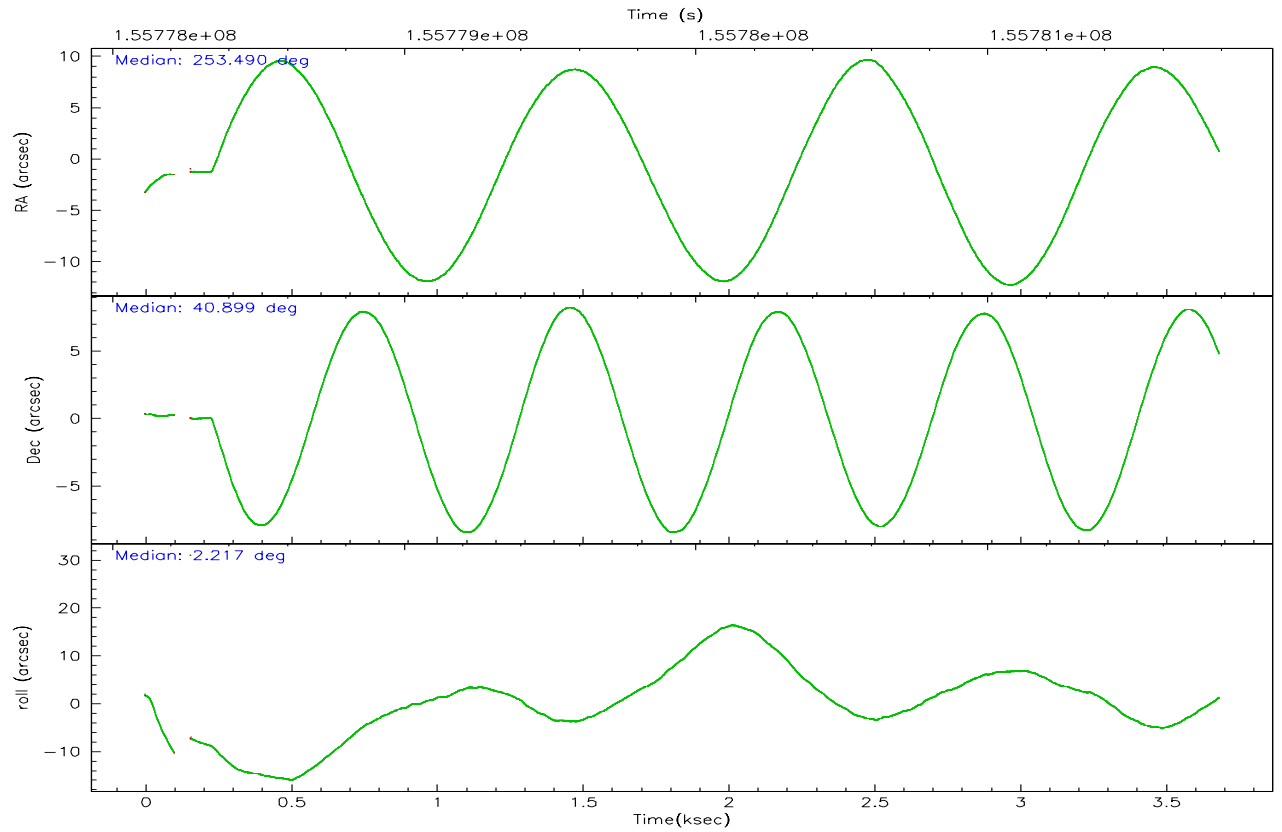
	ccd 2	ccd 3	ccd 5	ccd 6	ccd 7	ccd 8
grade 0 events	997	1020	1797	988	583	1431
	4%	5%	6%	5%	2%	6%
grade 1 events	10	7	52	6	16	14
	0%	0%	0%	0%	0%	0%
grade 2 events	462	388	3978	426	2403	980
	2%	2%	13%	2%	9%	4%
grade 3 events	204	237	337	234	512	440
	0%	1%	1%	1%	1%	1%
grade 4 events	191	221	267	230	466	438
	0%	1%	0%	1%	1%	1%
grade 5 events	691	777	1302	879	1629	1016
	3%	4%	4%	4%	6%	4%
grade 6 events	367	400	7018	439	5858	1215
	1%	2%	23%	2%	22%	5%
grade 7 events	17688	15173	14730	15616	14225	17612
	85%	83%	49%	82%	55%	76%

2.2 Compared Parameters

Parameter	Planned	Actual	Parameter	Planned	Actual
Instrument	ACIS	ACIS	Obspar format version number	6	6
Detector	ACIS-235678	ACIS-235678	Obspar file type	PREDICTED	ACTUAL
Grating	NONE	NONE	Obspar update status	NONE	UPDATED
Data mode	FAINT	FAINT	Number of optional ACIS chips dropped	0	0
Observation mode	POINTING	POINTING	On-chip summing requested	N	N
Pointing RA	253.459960	253.49040176701	Subarray requested	NONE	NONE
Pointing Dec	40.884450	40.89928737906472	Alternating exposures requested	N	N
Pointing Roll	2.088566	2.225303834682652	Primary exposure time	0.000000	3.2
SIM focus pos (mm)	-0.684267	-0.6828225247311905			
SIM defocus (mm)	0	0.001444936568705701			
SIM translation stage pos (mm)	-190.132523	-190.1425803651734			
SIM translation stage offset (mm)	0	0.01005778216563158			
Observation start time	155778594.184000	155777485.44675			
Observation start date	2002-12-08T23:48:50	2002-12-08T23:31:25			
Observation end time	155781794.184000	155782582.25947			
Observation end date	2002-12-09T00:42:10	2002-12-09T00:56:22			
Read mode	TIMED	TIMED			

2.3 Aspect



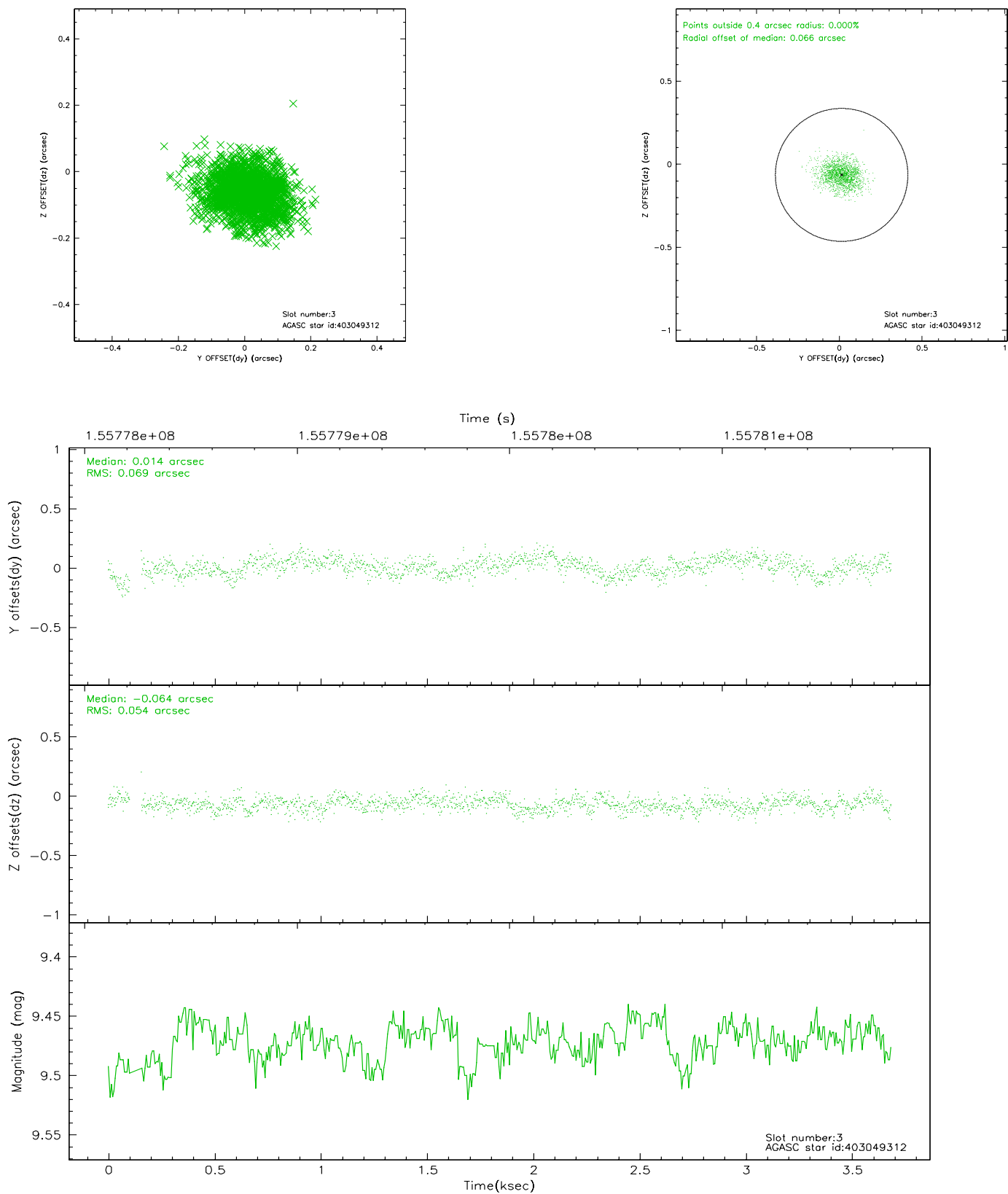


Slot Statistics

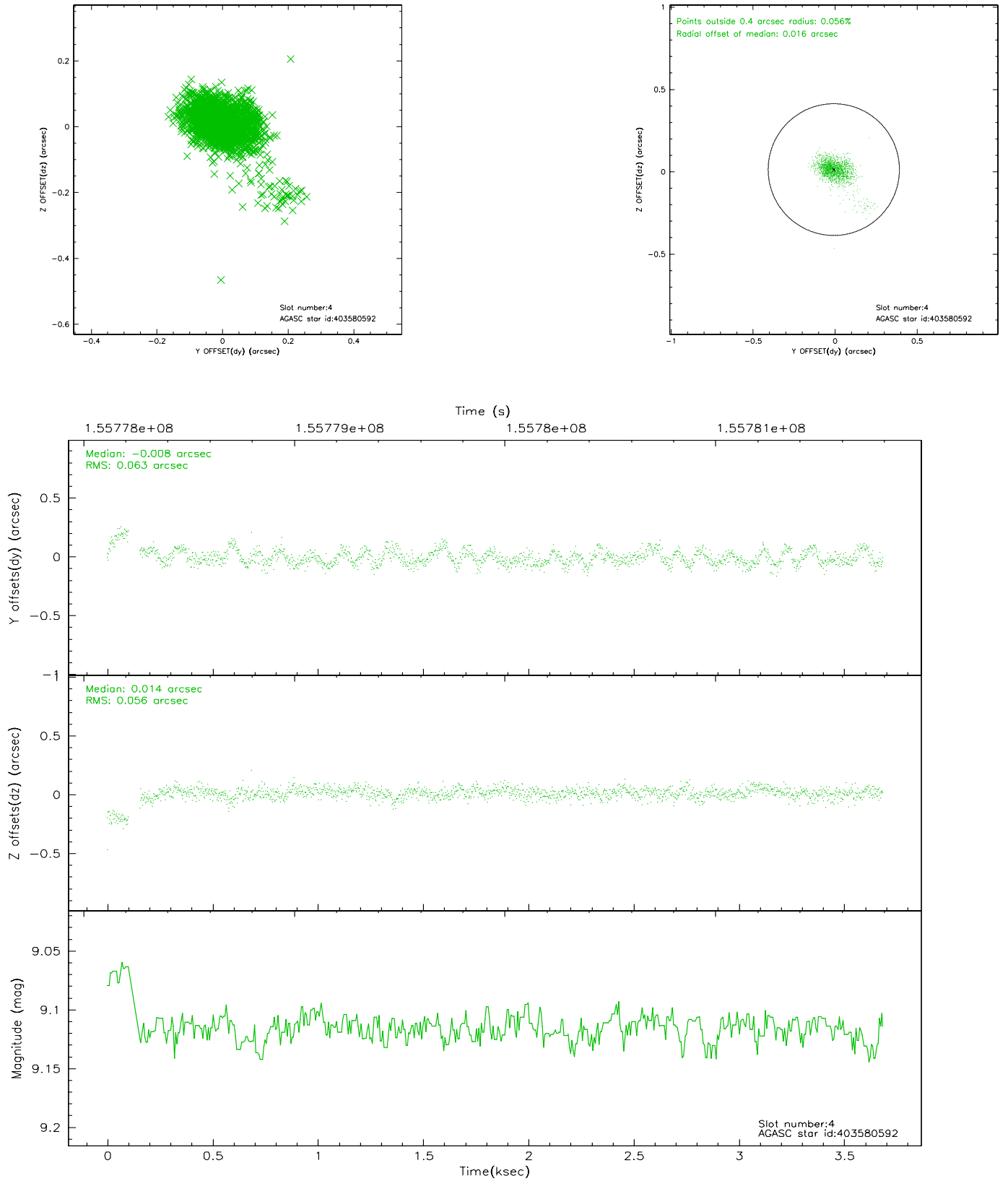
slot	status	id	mag	n_pts	med_dy	med_dz	dr1	dr2	ra	dec	mean_y	mean_z
0	FID	ACIS-S-2	7.10	886	-0.020	0.007	0.006	0.010	0.000000	0.000000	-754.86	-1729.92
1	FID	ACIS-S-4	7.20	886	-0.039	0.008	0.005	0.010	0.000000	0.000000	2157.62	176.76
2	FID	ACIS-S-5	7.23	886	0.028	-0.006	0.006	0.010	0.000000	0.000000	-1805.41	172.41
3	GUIDE	403049312	9.47	1772	0.014	-0.064	0.094	0.152	254.133325	40.940800	1837.17	143.09
4	GUIDE	403580592	9.12	1771	-0.008	0.014	0.077	0.138	252.994182	41.283994	-1206.23	1486.46
5	GUIDE	403047840	9.26	1769	0.040	-0.022	0.081	0.135	252.973158	41.032073	-1302.66	583.37
6	GUIDE	403049576	9.20	1772	-0.052	0.073	0.104	0.161	254.347621	40.568177	2383.85	-1213.57
7	MONITOR		0.00	0	0.000	0.000	0.000	0.000	0.000000	0.000000	0.00	0.00

2.4 Star Slots

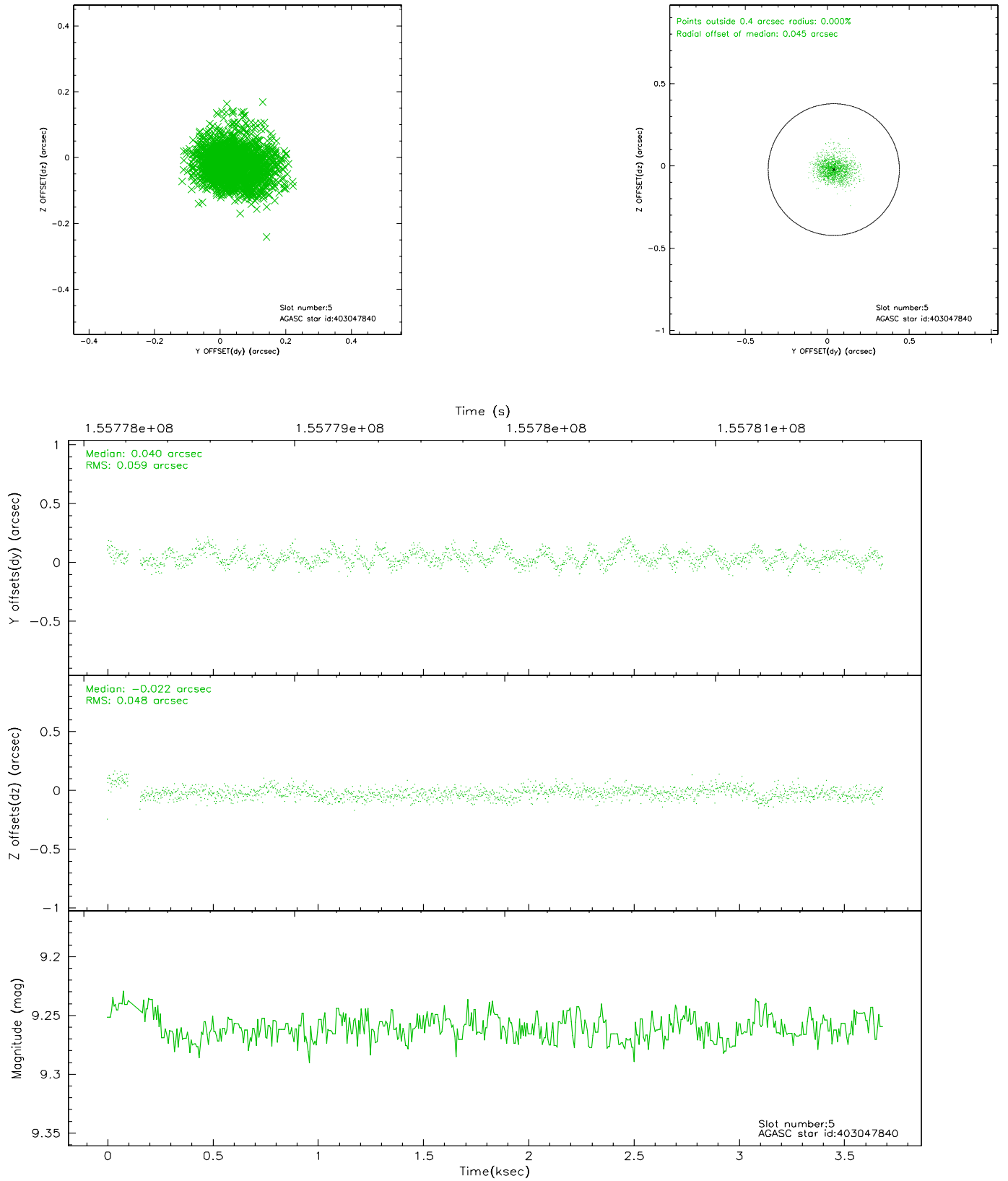
2.4.1 Slot 3



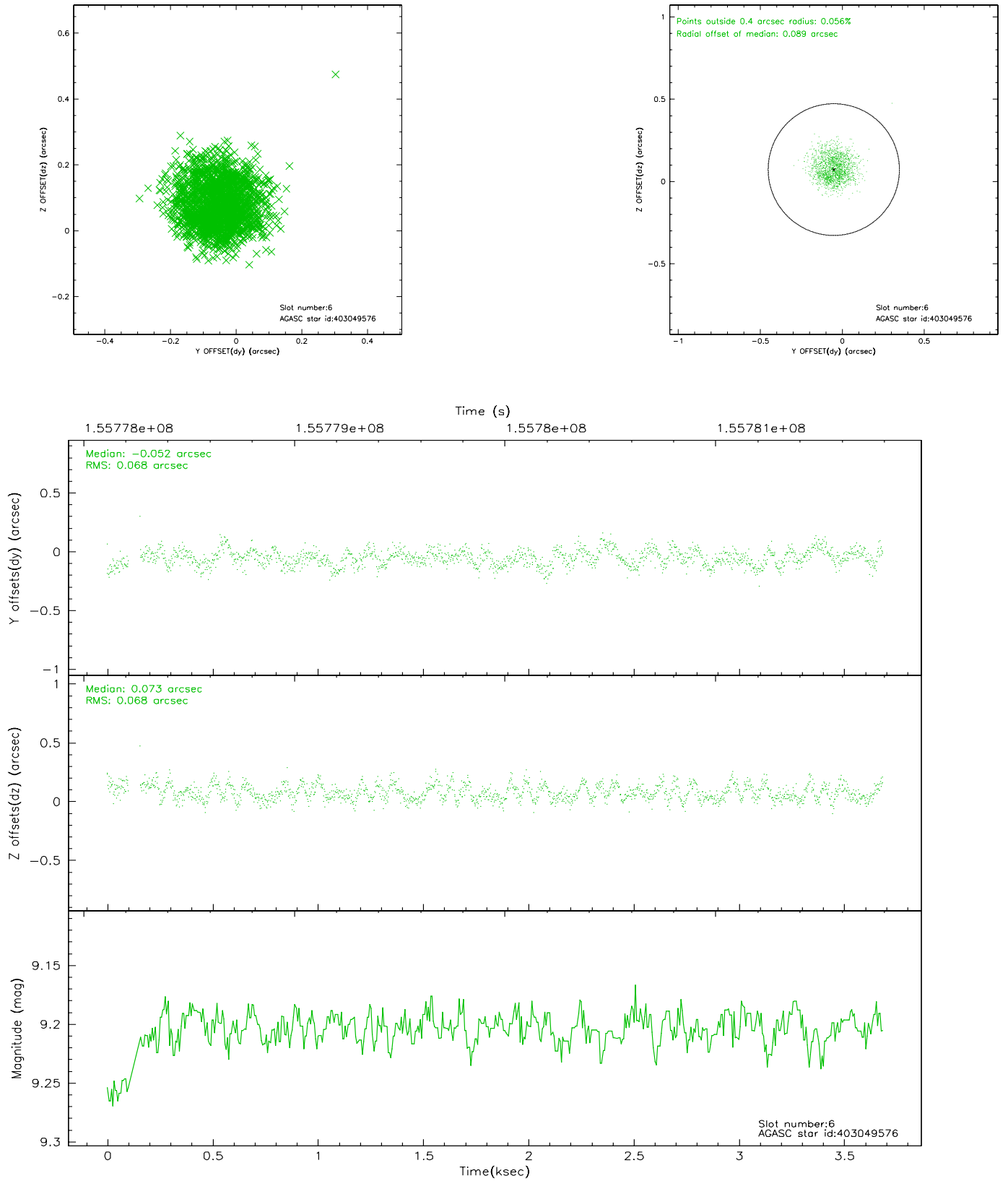
2.4.2 Slot 4



2.4.3 Slot 5

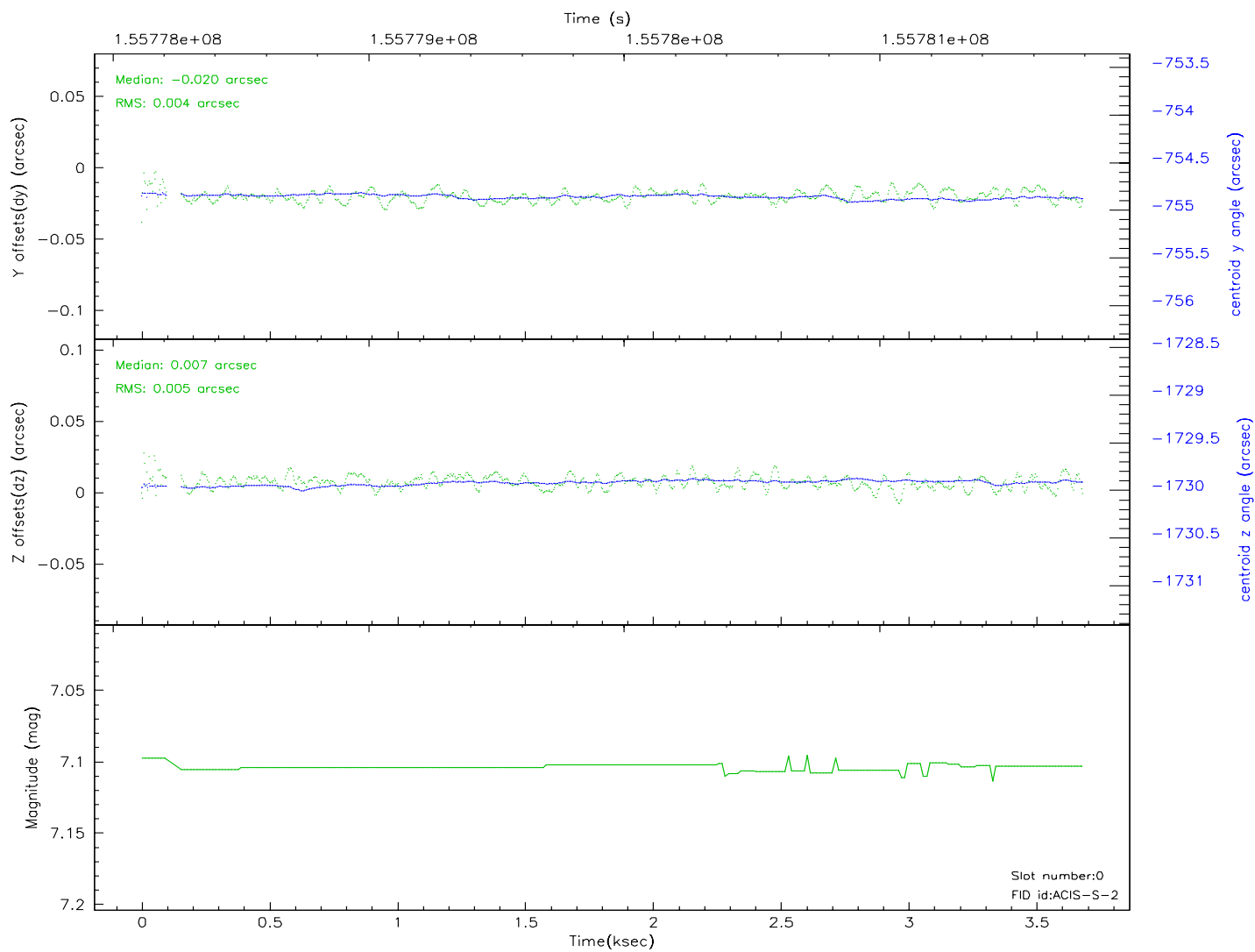
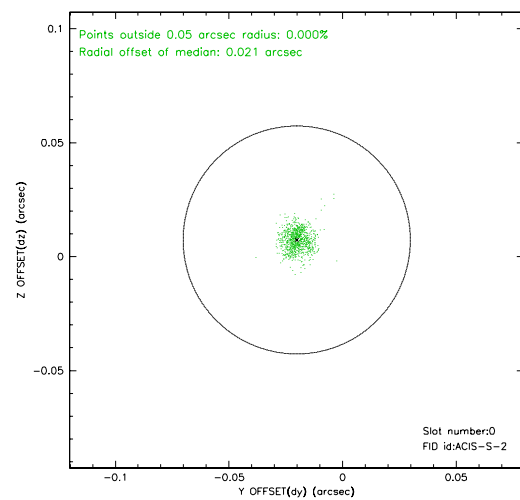
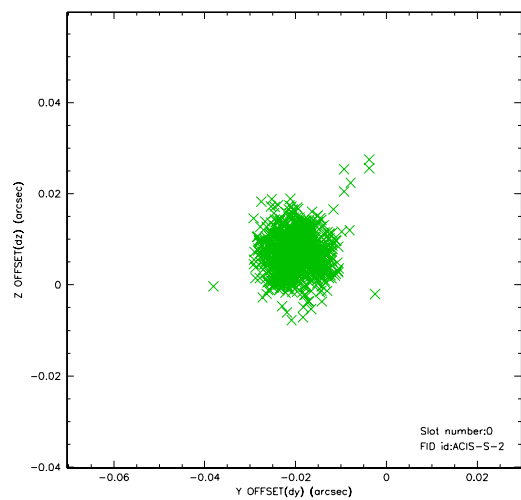


2.4.4 Slot 6

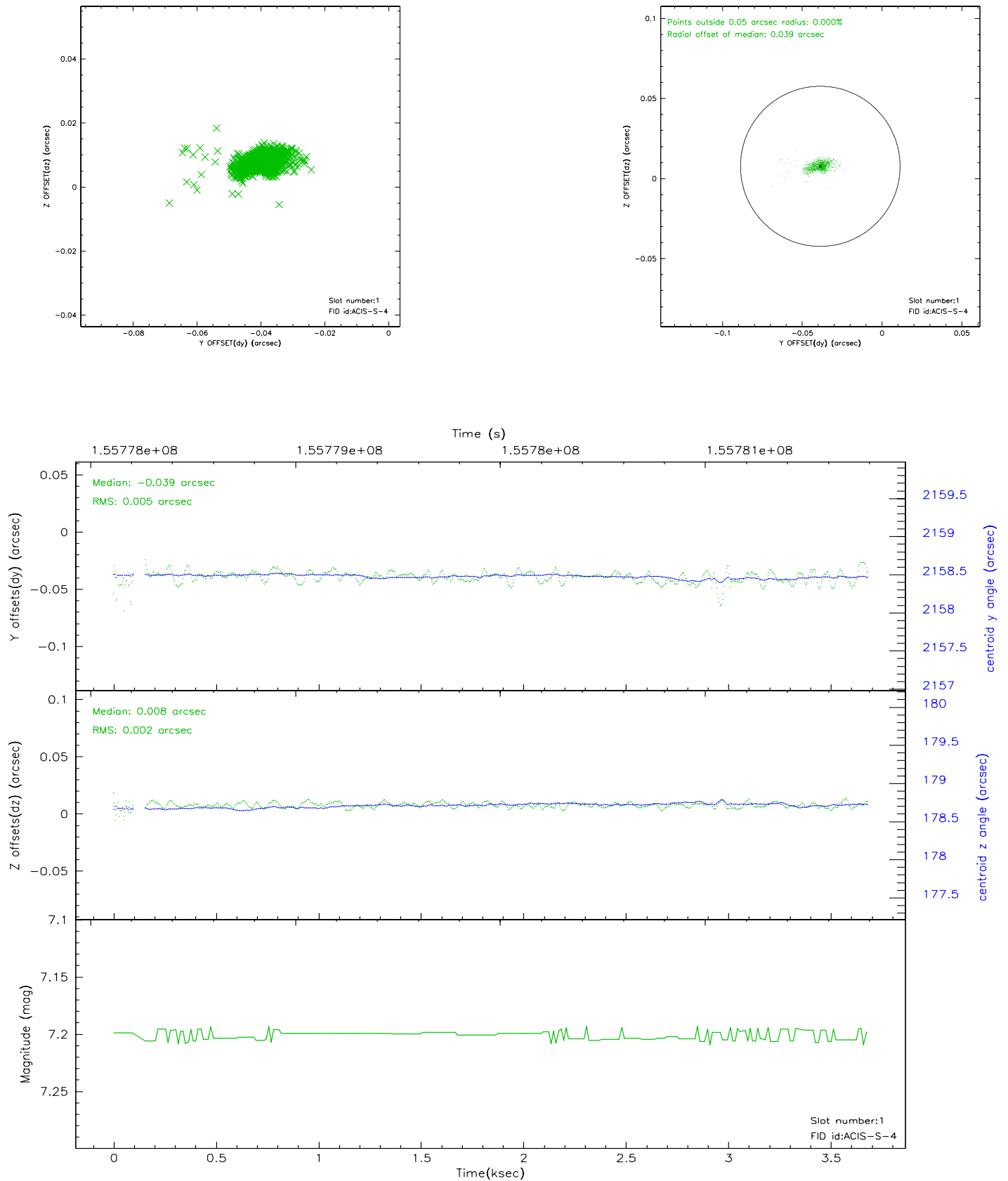


2.5 FID Slots

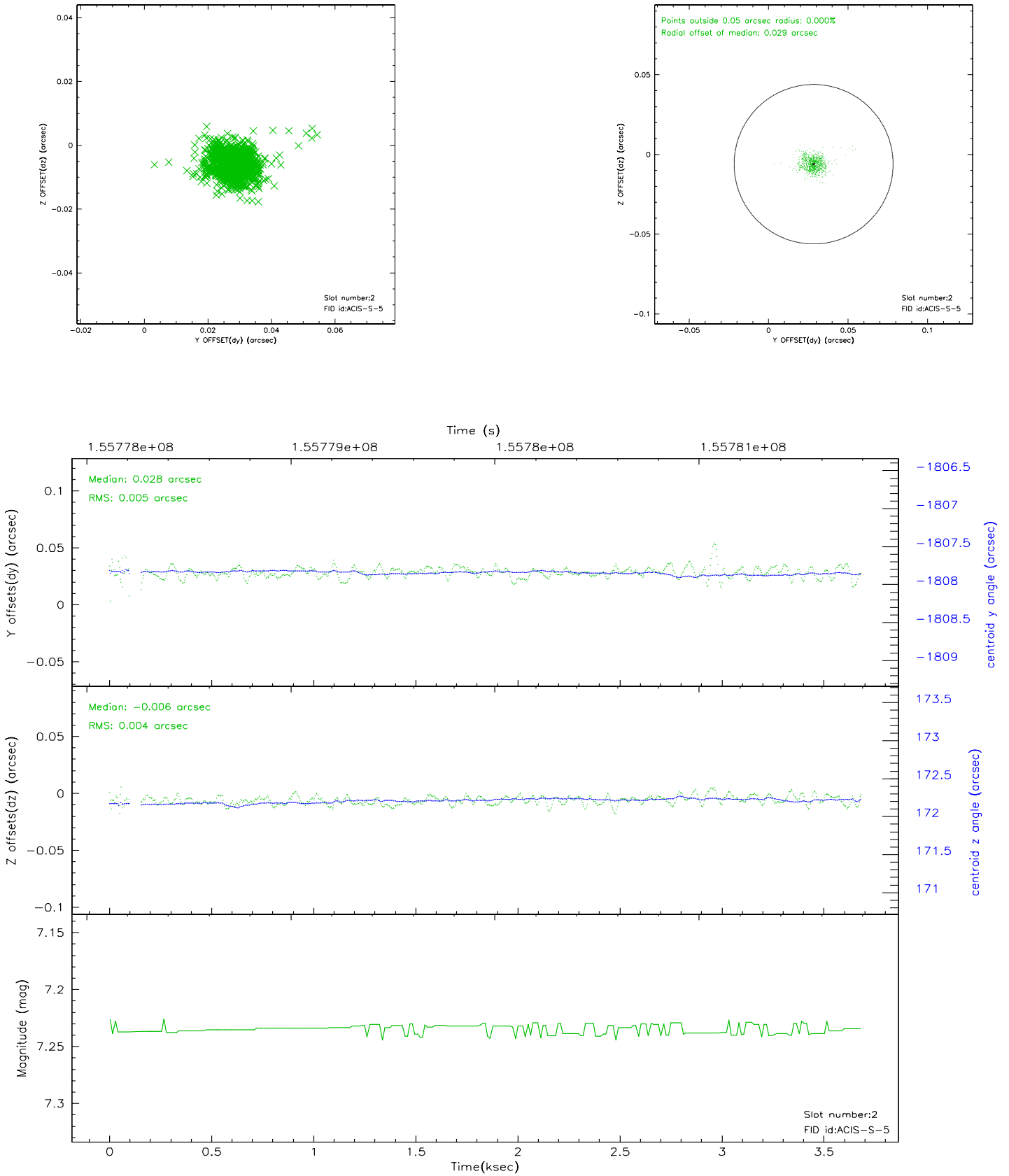
2.5.1 Slot 0



2.5.2 Slot 1



2.5.3 Slot 2



3 Point Sources

18.62 arcmin



A Summary

A.1 Status

V&V Scientist	Beth Sundheim
V&V Date (YYYY-MM-DD)	2006.10.15
V&V Edition	1
V&V Disposition and Status	OK
V&V Charge Time	3.158

A.2 Comments