

V&V Reference Report

L2 ASCDS Version : 7.6.8.1

Observation 3959 - L2 Version 001
Chandra X-Ray Center

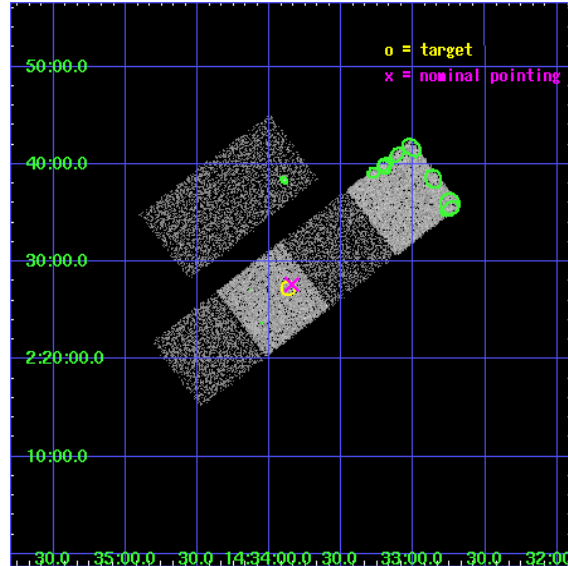
L2 Processing Date : Aug 4 2006

Contents

1	Front	2
2	OBI	3
2.1	OBI	3
2.1.1	Images	3
2.1.2	Bias	3
2.1.3	Parameters	4
2.1.4	Events	4
2.2	Compared Parameters	5
2.3	Aspect	6
2.4	Star Slots	9
2.4.1	Slot 3	9
2.4.2	Slot 4	10
2.4.3	Slot 5	11
2.4.4	Slot 6	12
2.4.5	Slot 7	13
2.5	FID Slots	14
2.5.1	Slot 0	14
2.5.2	Slot 1	15
2.5.3	Slot 2	16
3	Point Sources	17
A	Summary	18
A.1	Status	18
A.2	Comments	18

1 Front

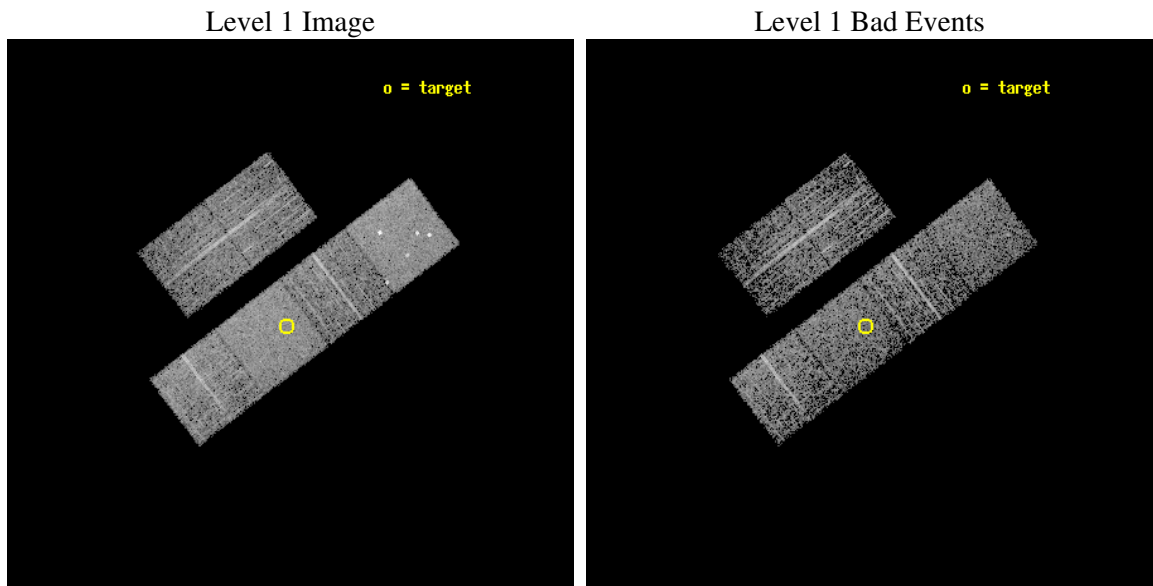
seq_num	700638
obs_id	3959
title	A CHANDRA AND XMM-NEWTON STUDY OF THE MOST DISTANT QUASARS: X-RAYING THE FIRST MASSIVE BLACK HOLES
observer	Prof. William Brandt
object	SDSS J143352+022714
dtcycle	0
cycle	P
ra_targ	218.4675
dec_targ	2.453889
ra_nom	218.46111109267
dec_nom	2.4609034574744
roll_nom	142.54862751251
revision	2
ontime	3542.3999868035
livetime	3497.5439851934
ontime2	3539.1589966416
ontime3	3542.3999868035
ontime5	3542.3999868035
ontime6	3542.3999868035
ontime7	3542.3999868035
ontime8	3542.3999868035
l2events	35634



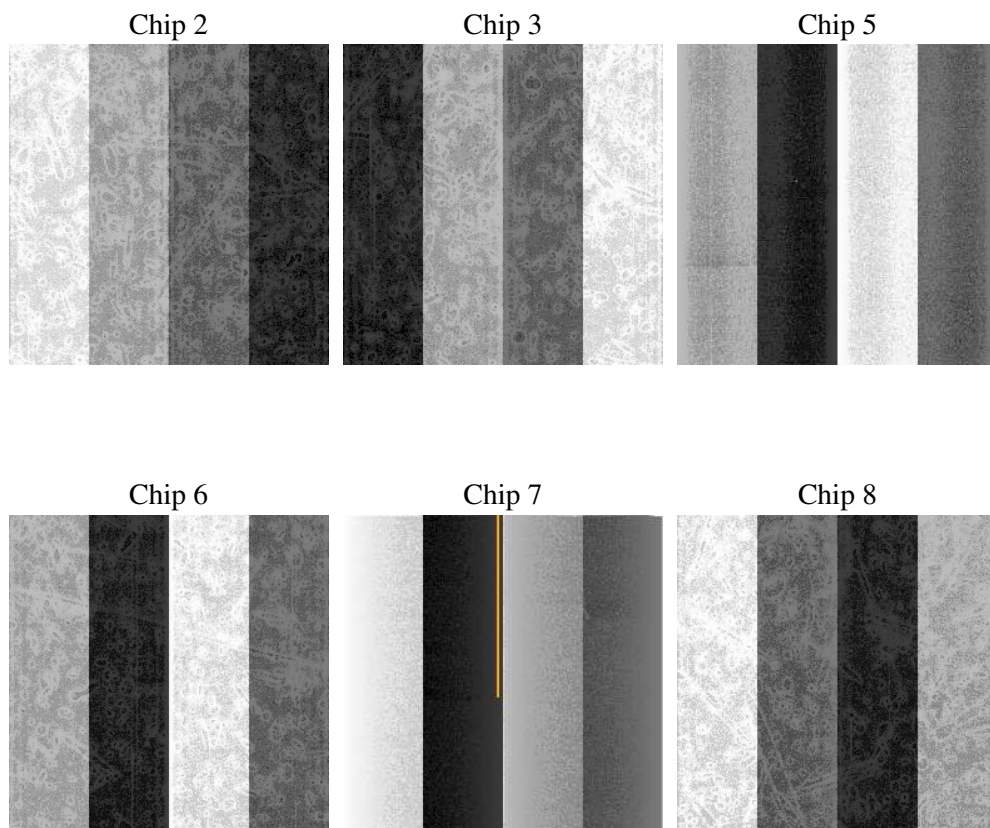
2 OBI

2.1 OBI

2.1.1 Images



2.1.2 Bias



2.1.3 Parameters

obi_num	1
ascdsver	7.6.8.1
caldsver	3.2.2
date	2006-08-04T22:18:06
revision	2

sched_exp_time	3500.000000
ontime	3548.8967502117
ontime2	3545.6557600498
ontime3	3548.8967502117
ontime5	3548.8967502117
ontime6	3548.8967502117
ontime7	3548.8967502117
ontime8	3548.8967502117
l1events	161024

2.1.4 Events

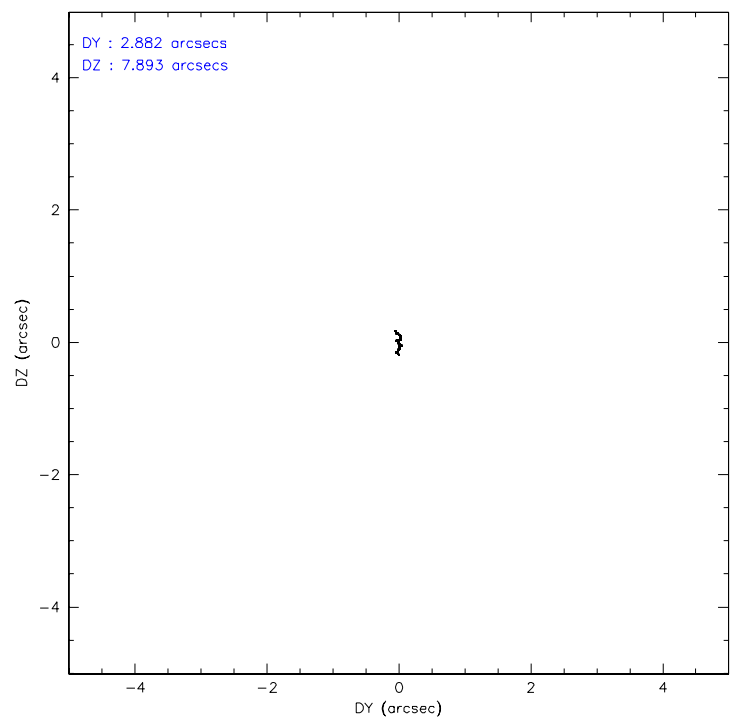
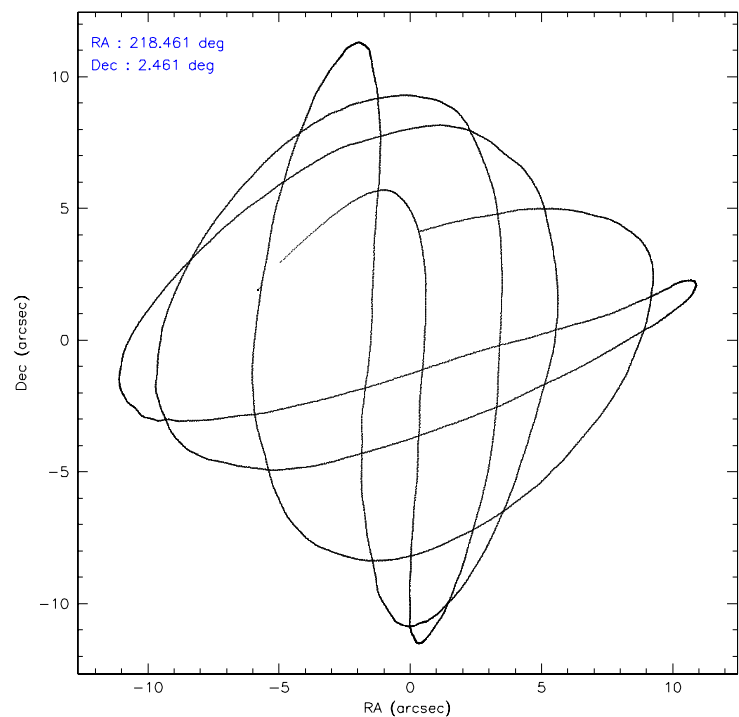
	ccd 2	ccd 3	ccd 5	ccd 6	ccd 7	ccd 8
level 1 events	23441	20557	35118	23195	30336	28377
rejected events	20632	17784	18434	20252	18552	22188
rejected %	88%	86%	52%	87%	61%	78%

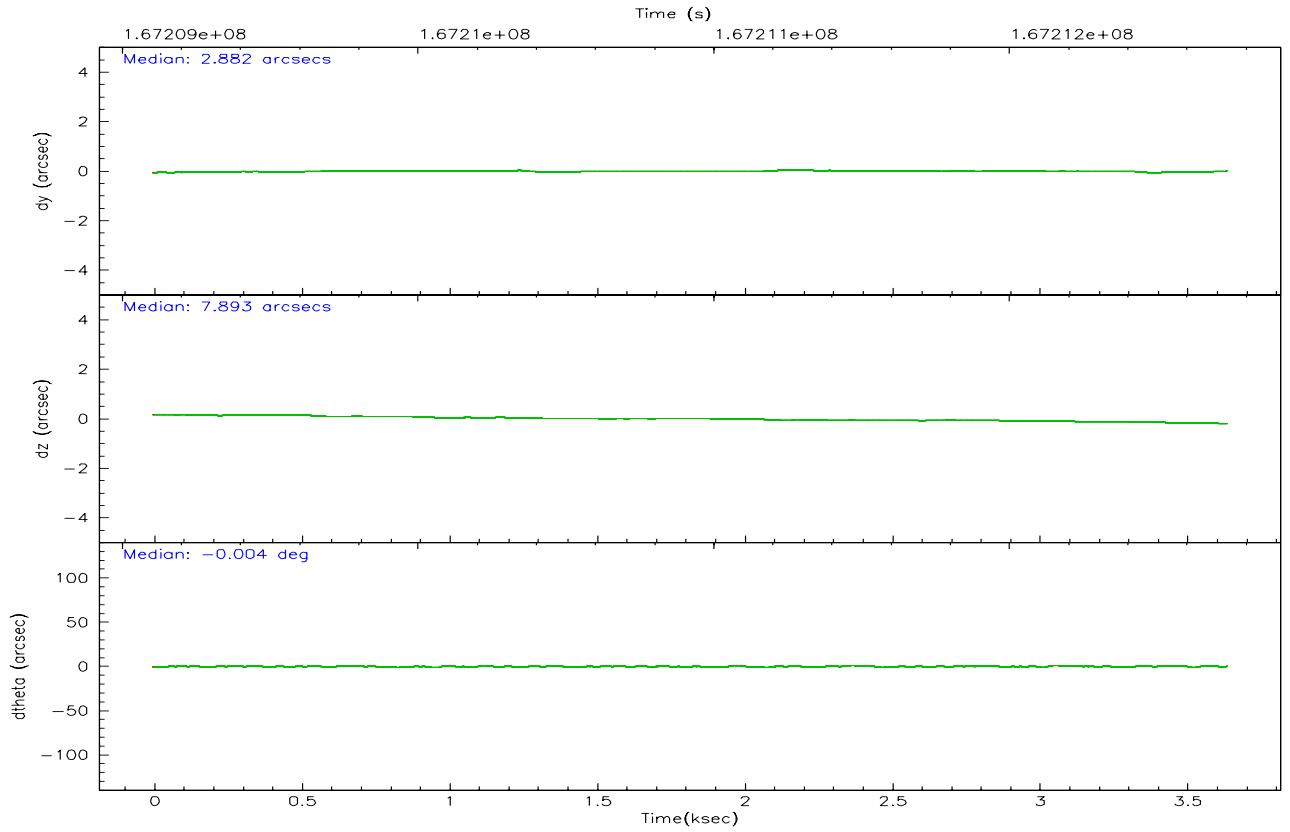
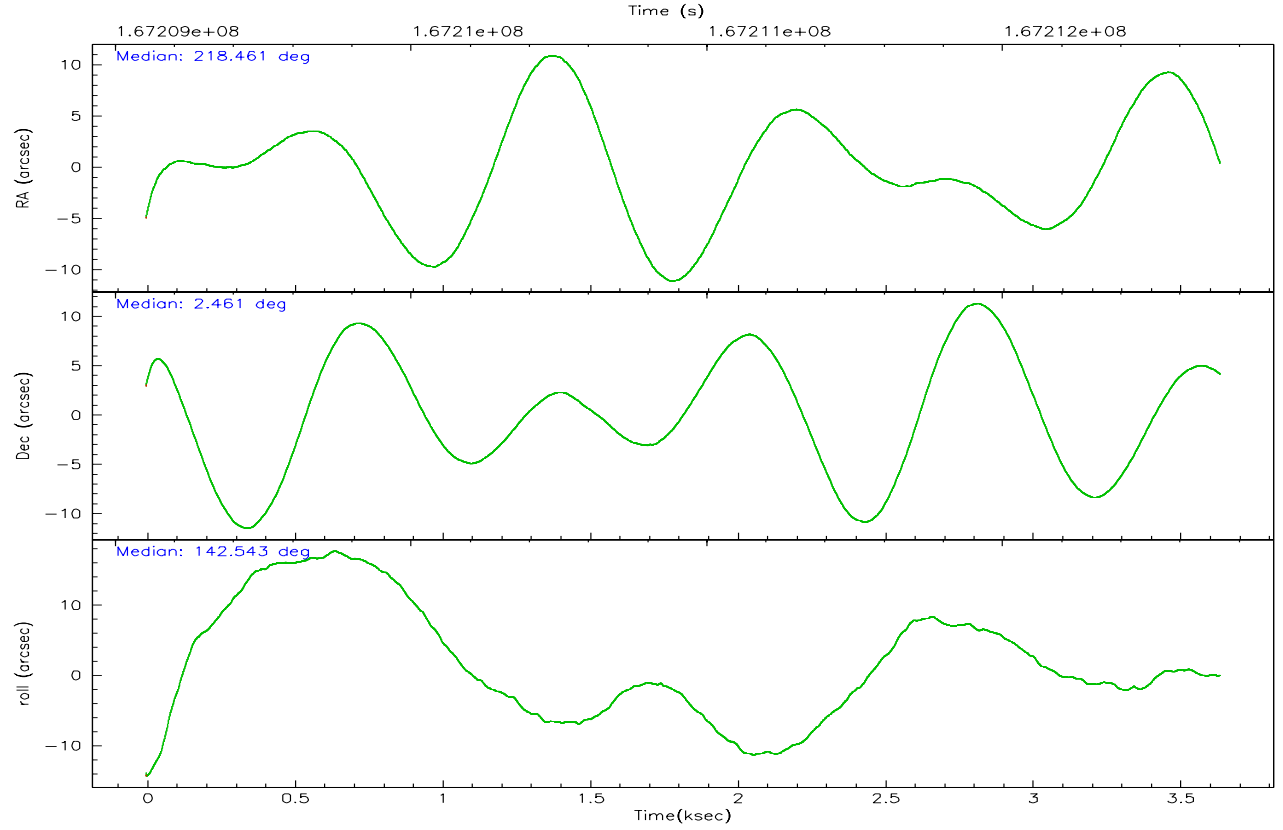
	ccd 2	ccd 3	ccd 5	ccd 6	ccd 7	ccd 8
grade 0 events	1363	1304	2840	1306	781	2034
	5%	6%	8%	5%	2%	7%
grade 1 events	19	19	62	11	10	14
	0%	0%	0%	0%	0%	0%
grade 2 events	549	501	4830	549	2912	1278
	2%	2%	13%	2%	9%	4%
grade 3 events	271	235	416	264	625	632
	1%	1%	1%	1%	2%	2%
grade 4 events	223	288	384	268	586	584
	0%	1%	1%	1%	1%	2%
grade 5 events	814	932	1588	1070	2043	1283
	3%	4%	4%	4%	6%	4%
grade 6 events	409	450	8253	565	6905	1672
	1%	2%	23%	2%	22%	5%
grade 7 events	19793	16828	16745	19162	16474	20880
	84%	81%	47%	82%	54%	73%

2.2 Compared Parameters

Parameter	Planned	Actual	Parameter	Planned	Actual
Instrument	ACIS	ACIS	Obspar format version number	6	6
Detector	ACIS-235678	ACIS-235678	Obspar file type	PREDICTED	ACTUAL
Grating	NONE	NONE	Obspar update status	NONE	UPDATED
Data mode	FAINT	FAINT	On-chip summing requested	N	N
Observation mode	POINTING	POINTING	Subarray requested	NONE	NONE
Pointing RA	218.488034	218.4611110926702	Alternating exposures requested	N	N
Pointing Dec	2.457864	2.460903457474415	Primary exposure time	0.000000	3.2
Pointing Roll	142.390865	142.5486275125107			
SIM focus pos (mm)	-0.684267	-0.6828225247311905			
SIM defocus (mm)	0	0.001444936568705701			
SIM translation stage pos (mm)	-190.132523	-190.1400660498719			
SIM translation stage offset (mm)	0	0.00754346686406393			
Observation start time	167209236.184000	167208102.96418			
Observation start date	2003-04-20T06:59:32	2003-04-20T06:41:42			
Observation end time	167212736.184000	167213153.1394			
Observation end date	2003-04-20T07:57:52	2003-04-20T08:05:53			
Read mode	TIMED	TIMED			

2.3 Aspect



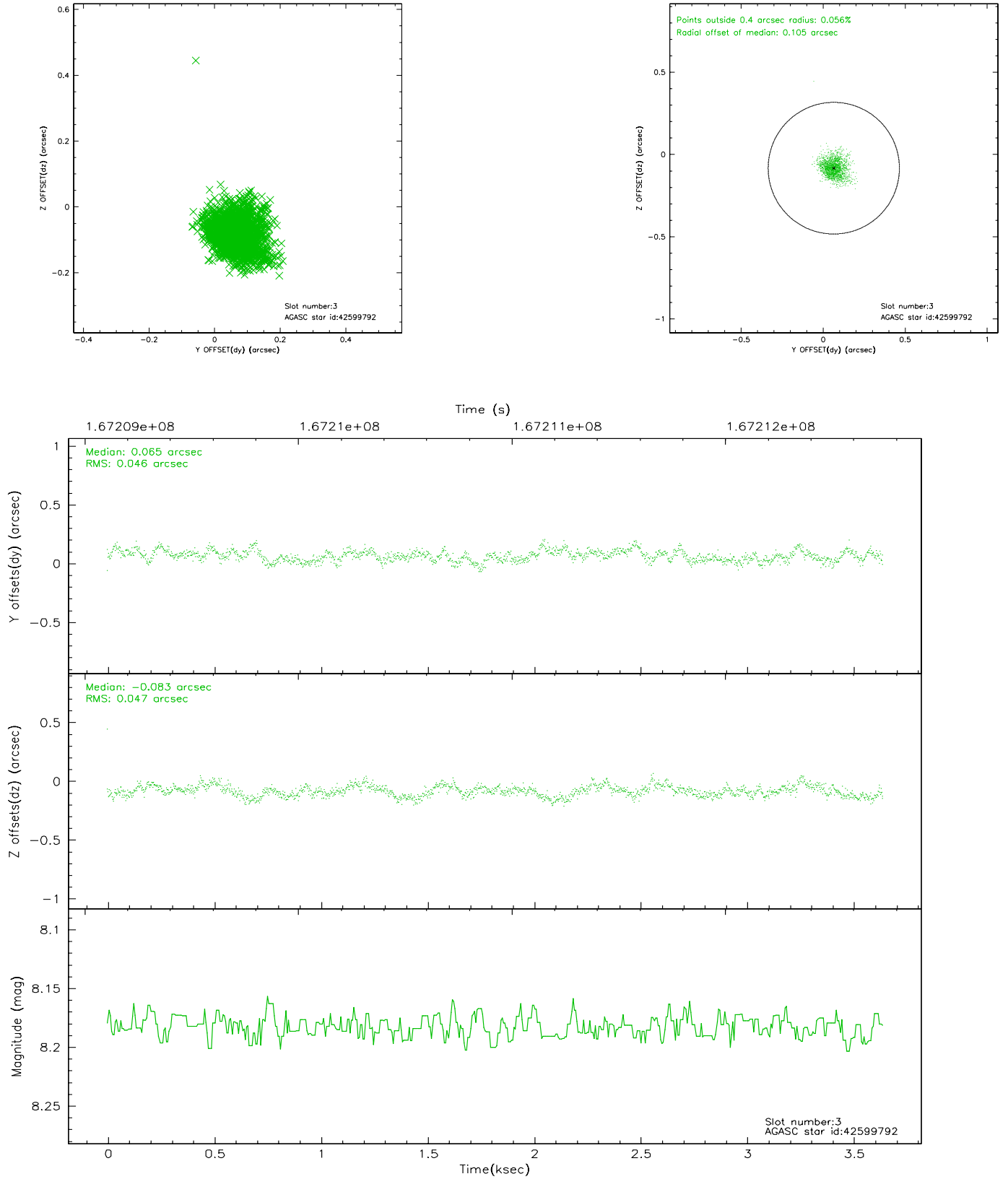


Slot Statistics

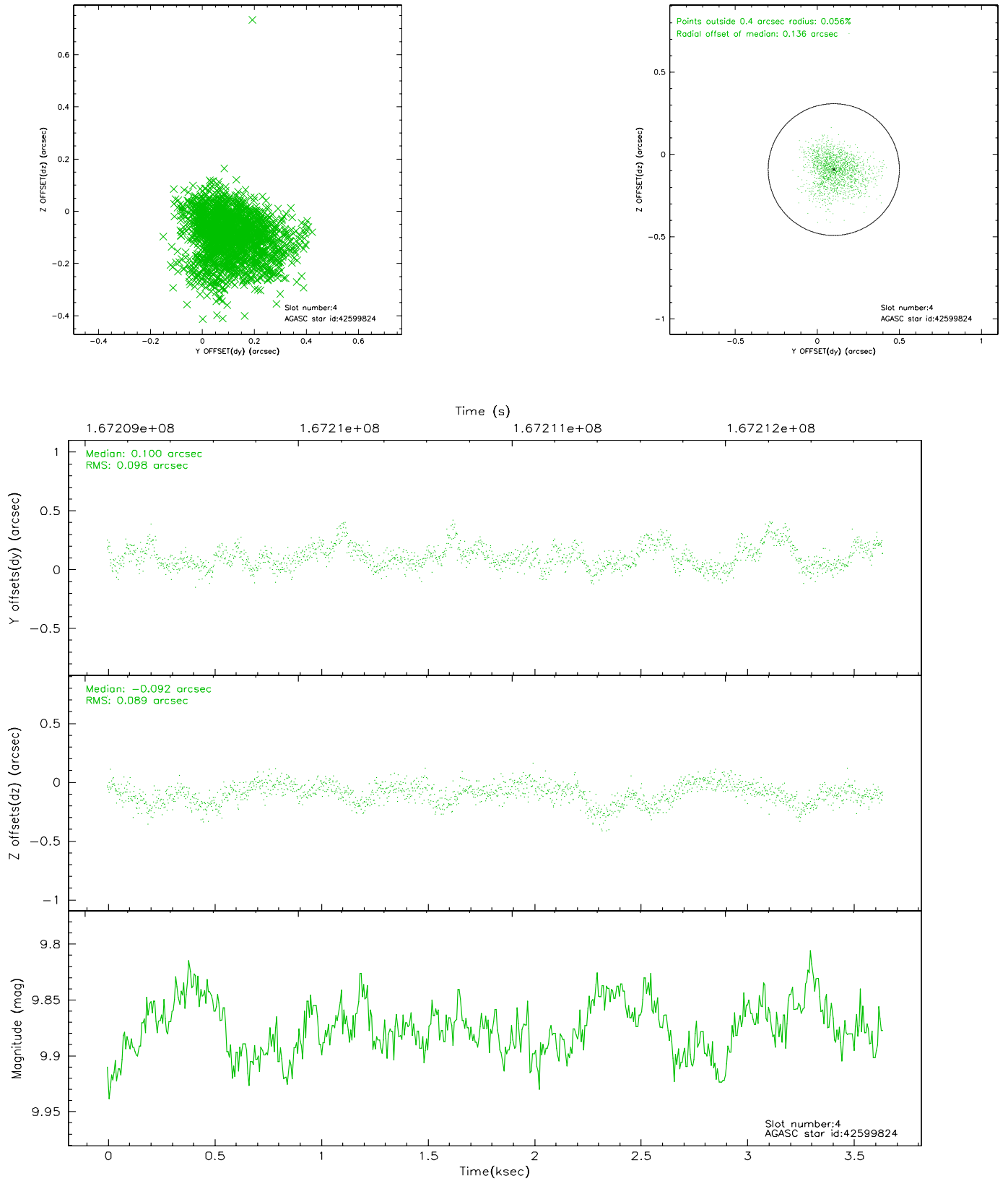
slot	status	id	mag	n_pts	med_dy	med_dz	dr1	dr2	ra	dec	mean_y	mean_z
0	FID	ACIS-S-2	7.11	888	-0.002	0.016	0.006	0.011	0.000000	0.000000	-755.52	-1729.06
1	FID	ACIS-S-4	7.20	888	-0.047	-0.003	0.005	0.009	0.000000	0.000000	2156.93	177.61
2	FID	ACIS-S-5	7.24	888	0.018	-0.004	0.006	0.010	0.000000	0.000000	-1806.11	173.26
3	GUIDE	42599792	8.18	1776	0.065	-0.083	0.068	0.114	218.578228	1.678118	-1969.60	2025.83
4	GUIDE	42599824	9.88	1775	0.100	-0.092	0.138	0.227	218.576000	2.073509	-1095.51	904.24
5	GUIDE	42993352	9.97	1775	-0.096	0.044	0.140	0.222	218.429374	3.080970	1536.14	-1647.44
6	GUIDE	43004440	10.17	1776	-0.077	0.030	0.133	0.220	218.423689	2.982526	1337.69	-1355.41
7	GUIDE	42992520	10.00	1768	-0.005	0.099	0.137	0.225	218.633600	3.181135	1176.41	-2382.38

2.4 Star Slots

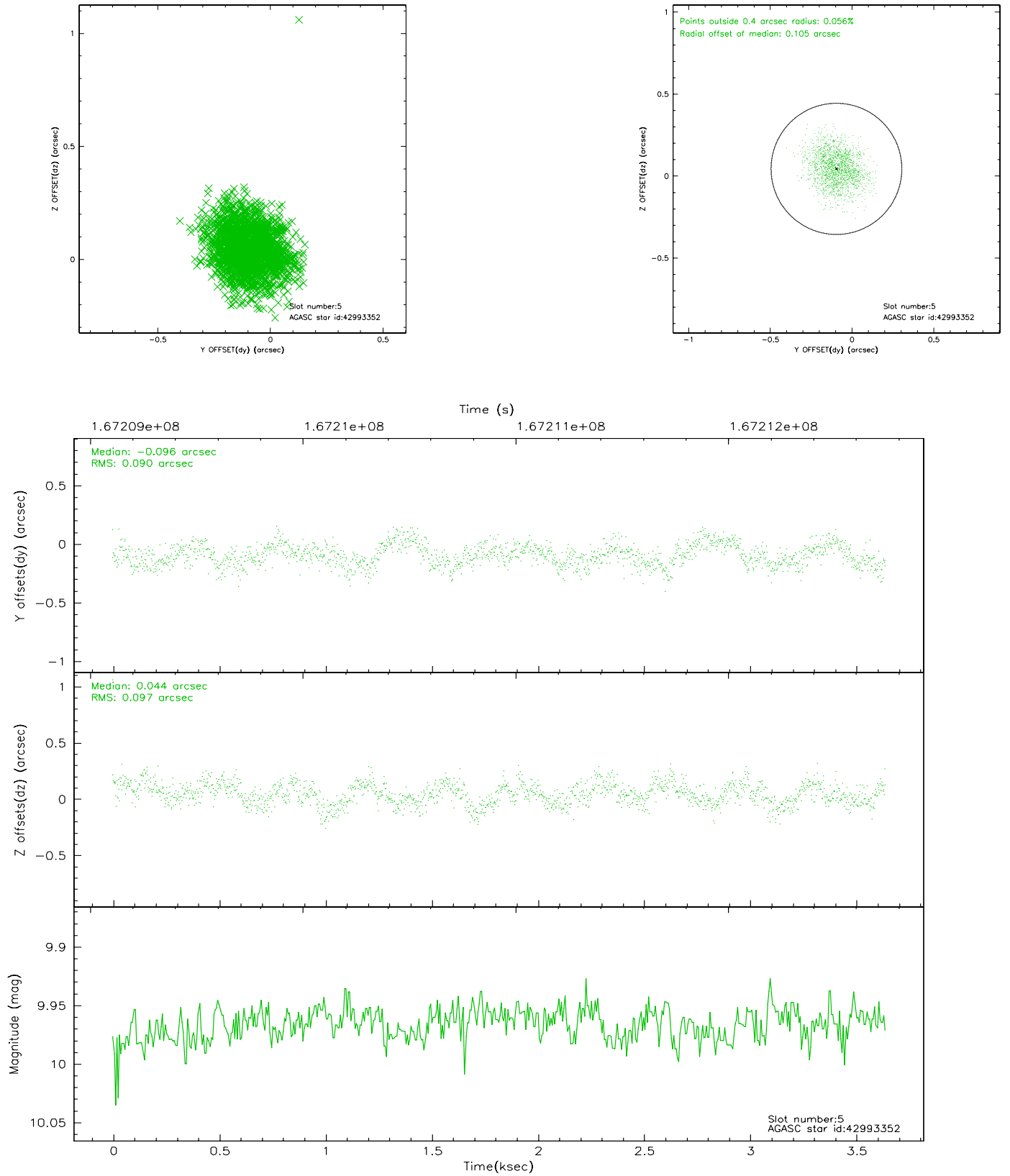
2.4.1 Slot 3



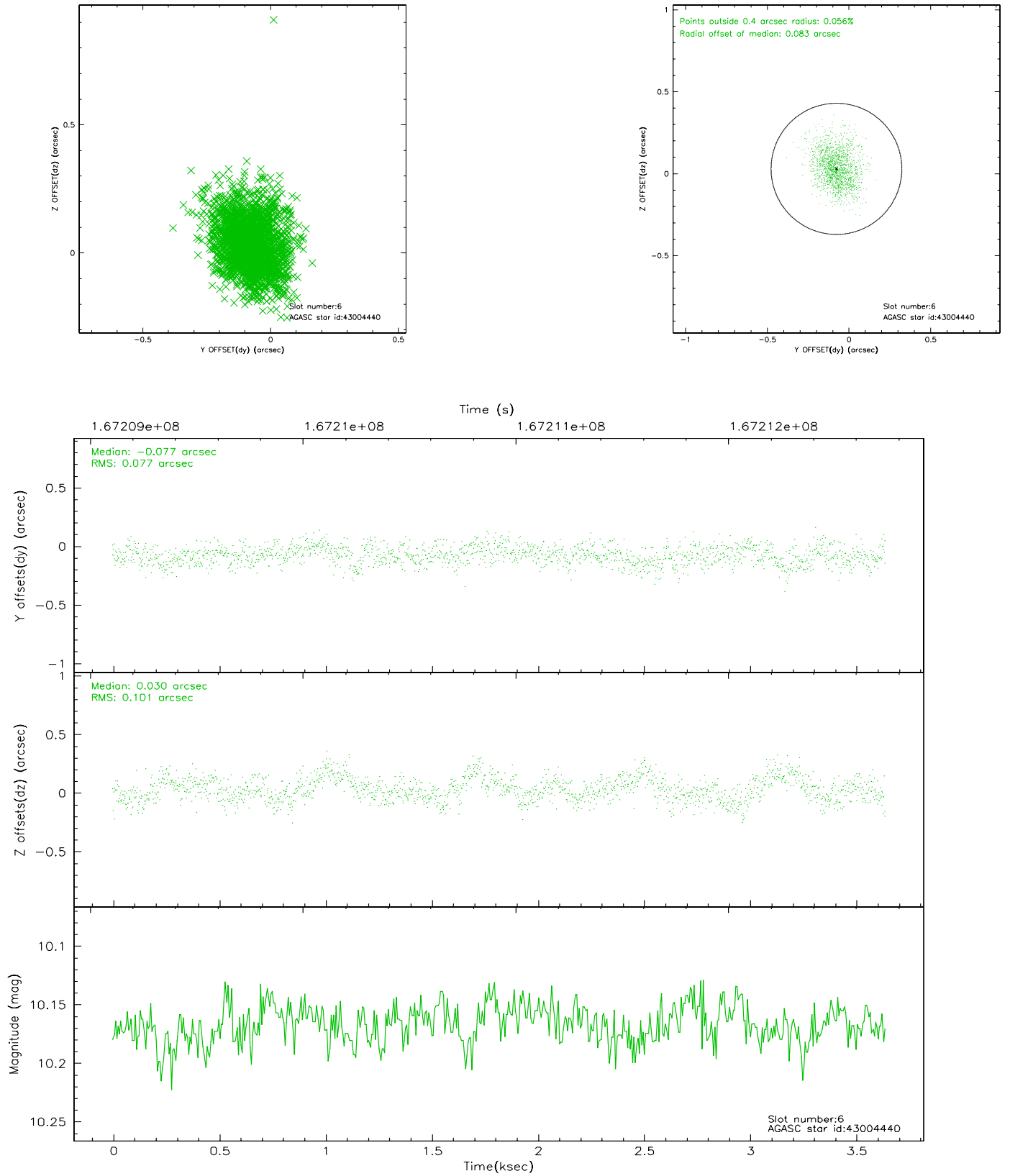
2.4.2 Slot 4



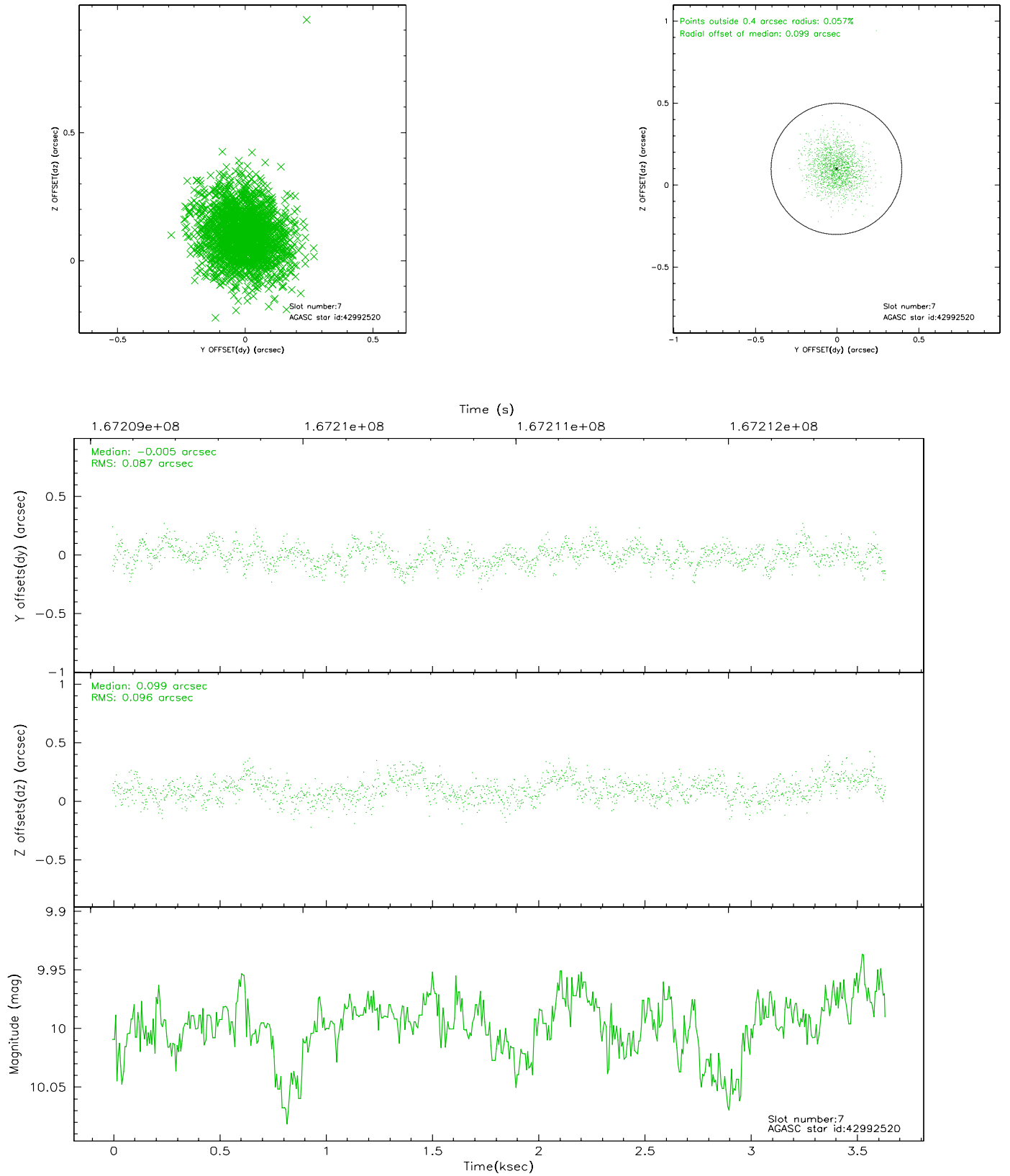
2.4.3 Slot 5



2.4.4 Slot 6

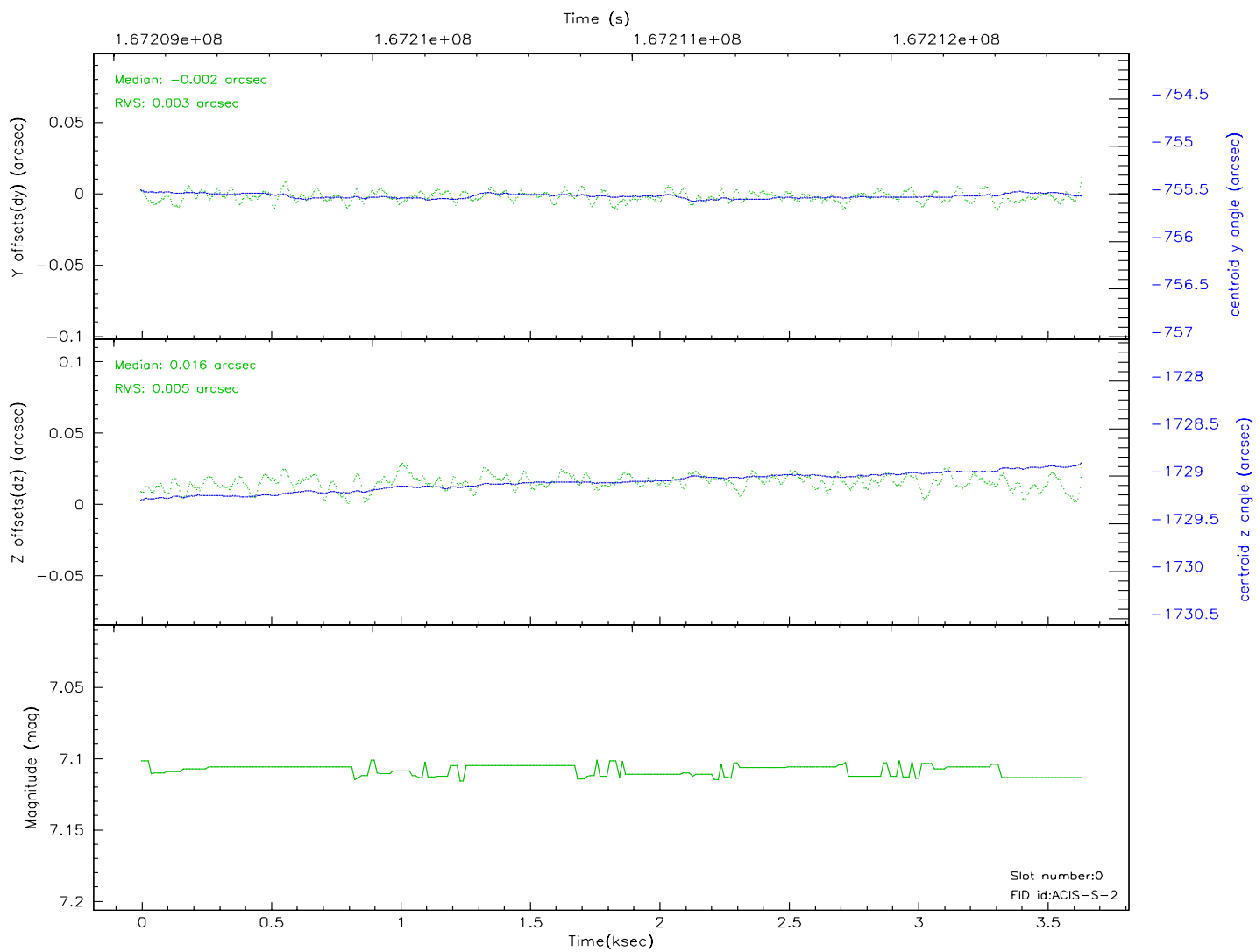
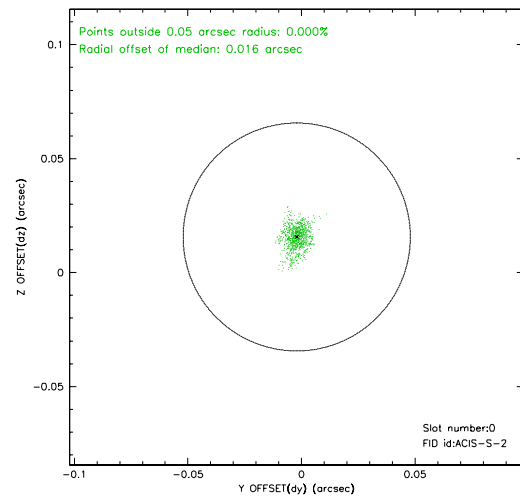
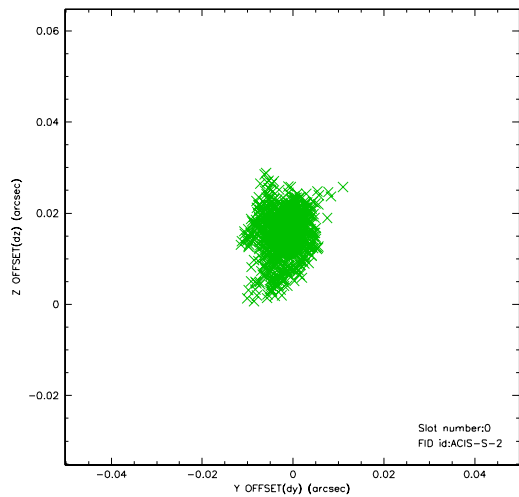


2.4.5 Slot 7

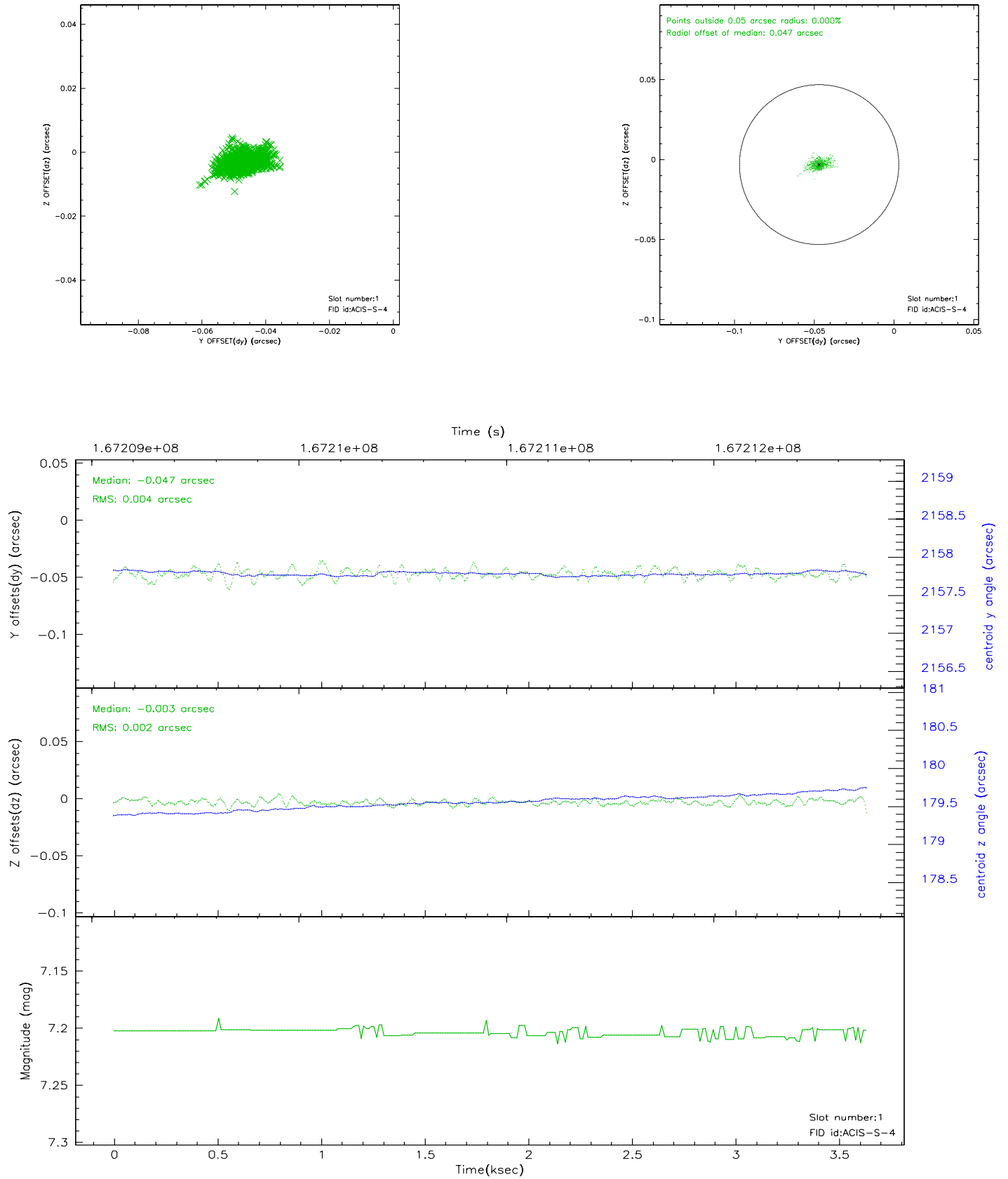


2.5 FID Slots

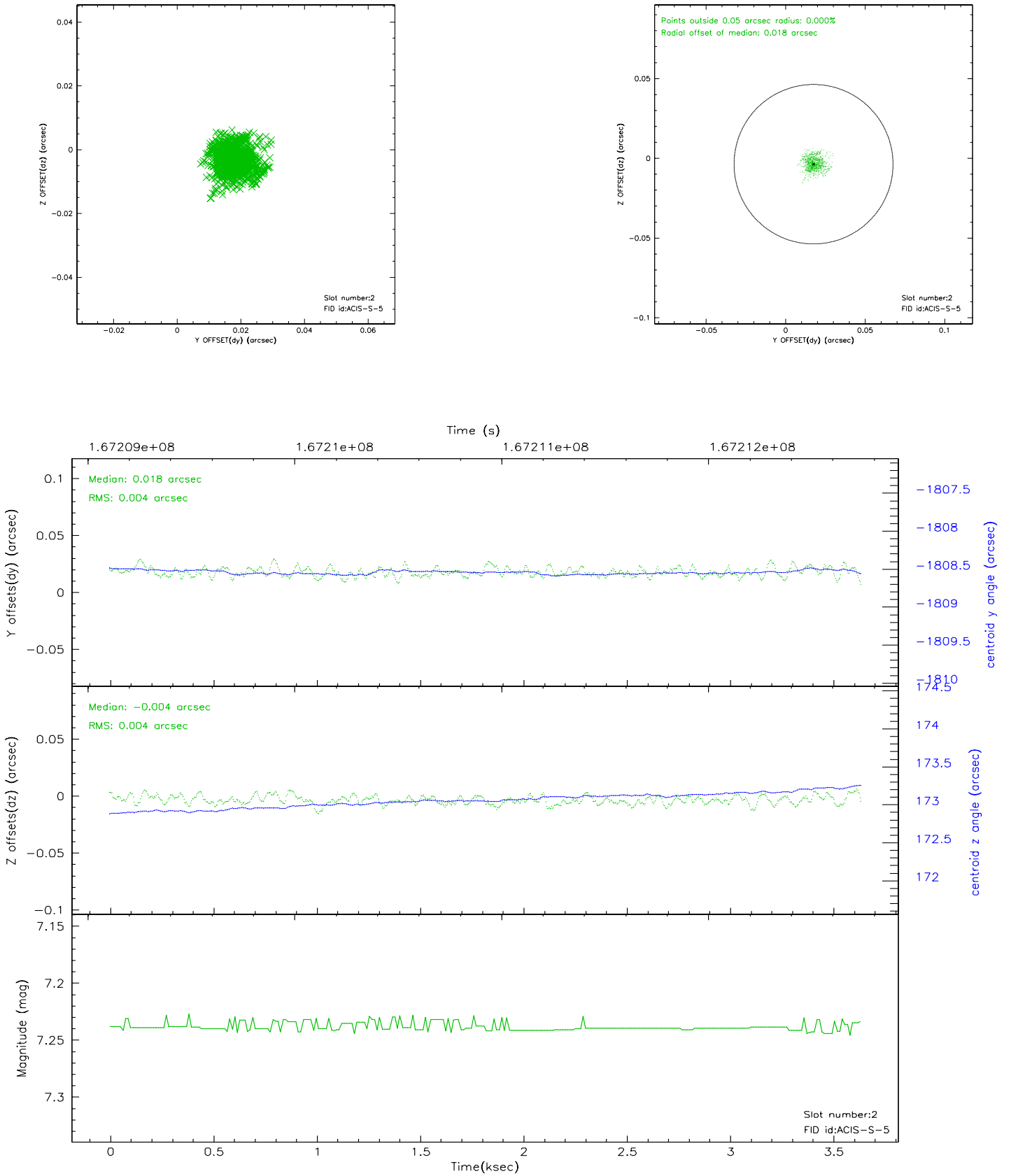
2.5.1 Slot 0



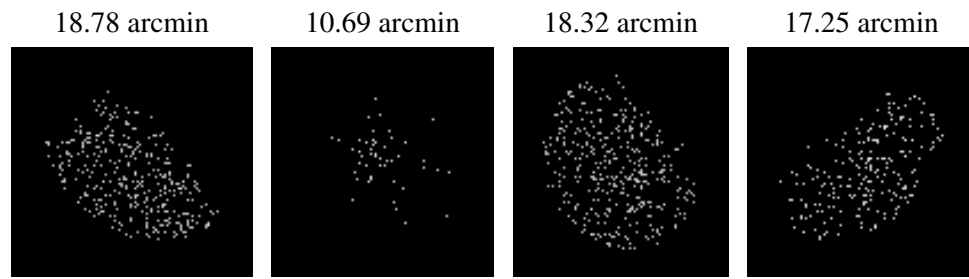
2.5.2 Slot 1



2.5.3 Slot 2



3 Point Sources



A Summary

A.1 Status

V&V Scientist	Beth Sundheim
V&V Date (YYYY-MM-DD)	2006.08.06
V&V Edition	1
V&V Disposition and Status	OK
V&V Charge Time	3.545

A.2 Comments