

V&V Reference Report

L2 ASCDS Version : 7.6.8.1

Observation 3957 - L2 Version 001
Chandra X-Ray Center

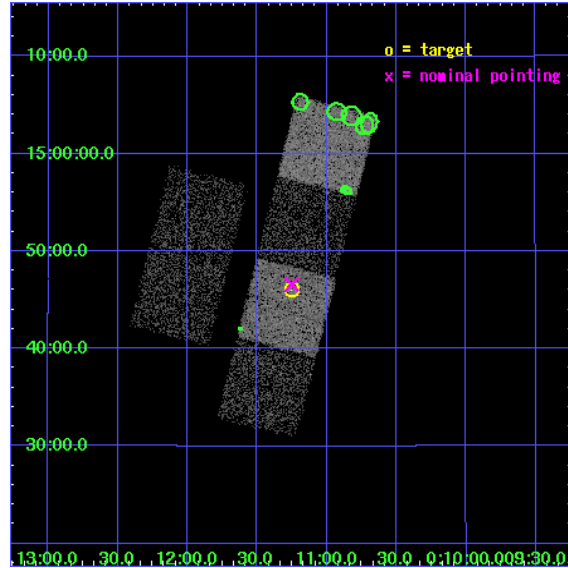
L2 Processing Date : Aug 12 2006

Contents

1	Front	2
2	OBI	3
2.1	OBI	3
2.1.1	Images	3
2.1.2	Bias	3
2.1.3	Parameters	4
2.1.4	Events	4
2.2	Compared Parameters	5
2.3	Aspect	6
2.4	Star Slots	9
2.4.1	Slot 3	9
2.4.2	Slot 4	10
2.4.3	Slot 5	11
2.4.4	Slot 6	12
2.4.5	Slot 7	13
2.5	FID Slots	14
2.5.1	Slot 0	14
2.5.2	Slot 1	15
2.5.3	Slot 2	16
3	Point Sources	17
A	Summary	18
A.1	Status	18
A.2	Comments	18

1 Front

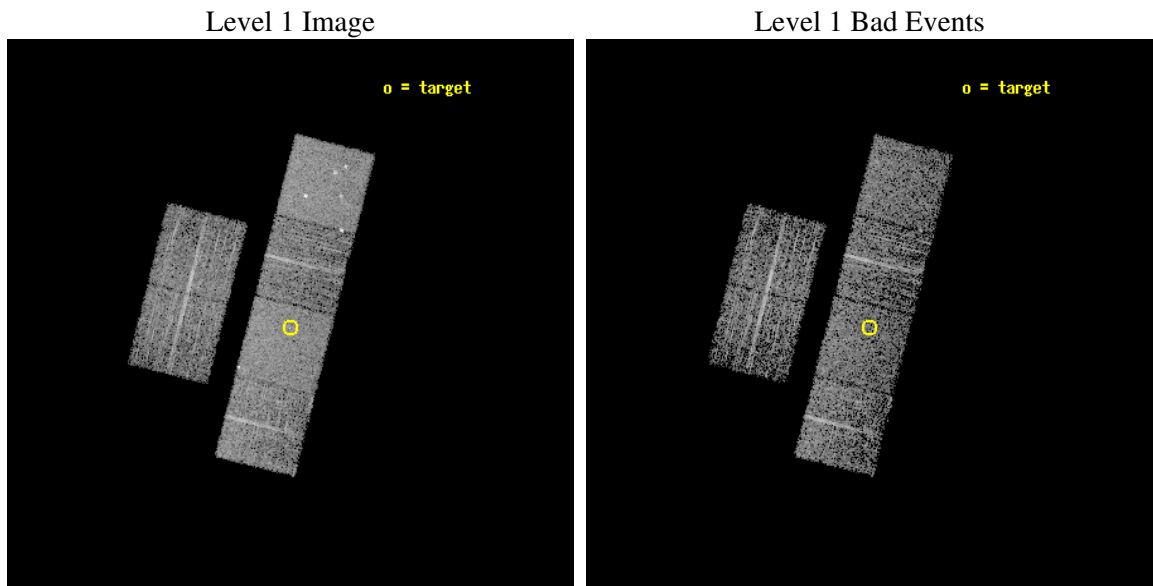
seq_num	700636
obs_id	3957
title	A CHANDRA AND XMM-NEWTON STUDY OF THE MOST DISTANT QUASARS: X-RAYING THE FIRST MASSIVE BLACK HOLES
observer	Prof. William Brandt
object	SDSS J001115+144601
dtcycle	0
cycle	P
ra_targ	2.813333
dec_targ	14.767167
ra_nom	2.8126905718224
dec_nom	14.776621003497
roll_nom	104.19672718582
revision	2
ontime	3539.1180561185
livetime	3494.3036122909
ontime2	3539.1180262566
ontime3	3542.359026432
ontime5	3539.1180760562
ontime6	3545.5999867916
ontime7	3539.1180561185
ontime8	3542.3590065241
l2events	33313



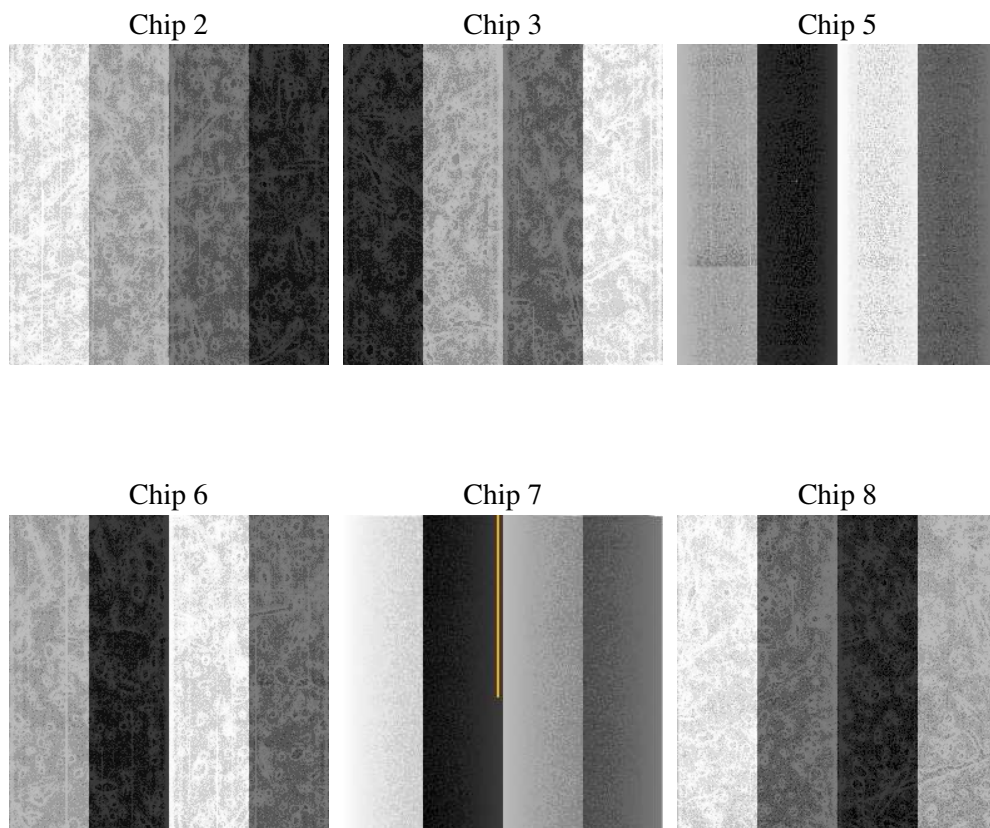
2 OBI

2.1 OBI

2.1.1 Images



2.1.2 Bias



2.1.3 Parameters

obi_num	0
ascdsver	7.6.8.1
caldsver	3.2.3
date	2006-08-12T06:43:35
revision	2

sched_exp_time	3432.000000
ontime	3801.6997908354
ontime2	3801.6997609735
ontime3	3804.9407611489
ontime5	3801.6998107731
ontime6	3808.1817215085
ontime7	3801.6997908354
ontime8	3804.940741241
l1events	169053

2.1.4 Events

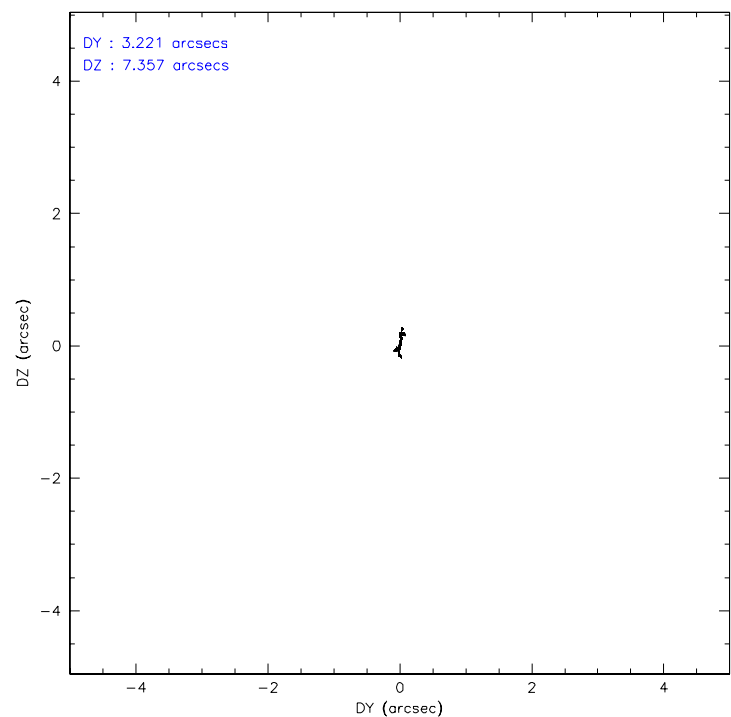
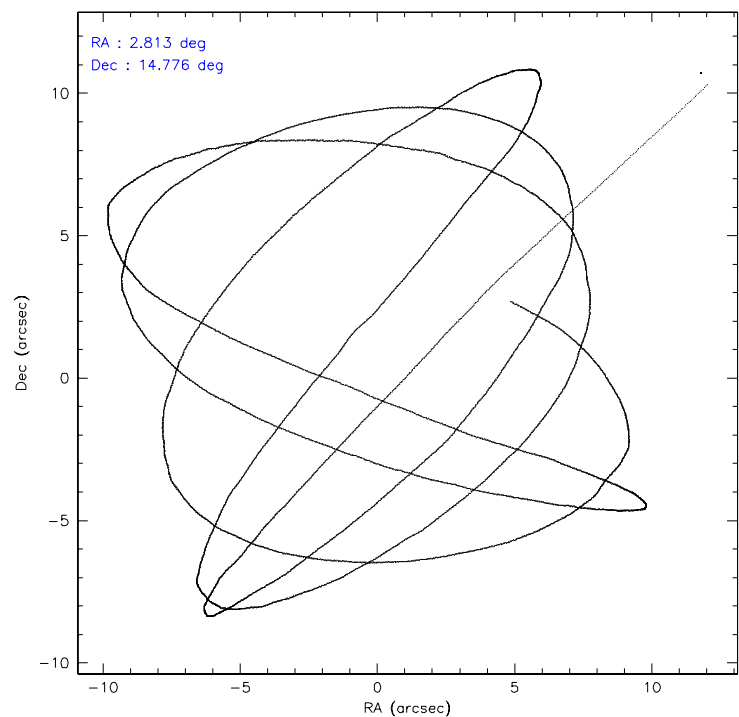
	ccd 2	ccd 3	ccd 5	ccd 6	ccd 7	ccd 8
level 1 events	24550	23317	35852	23805	32387	29142
rejected events	22054	20838	20666	21284	21013	23739
rejected %	89%	89%	57%	89%	64%	81%

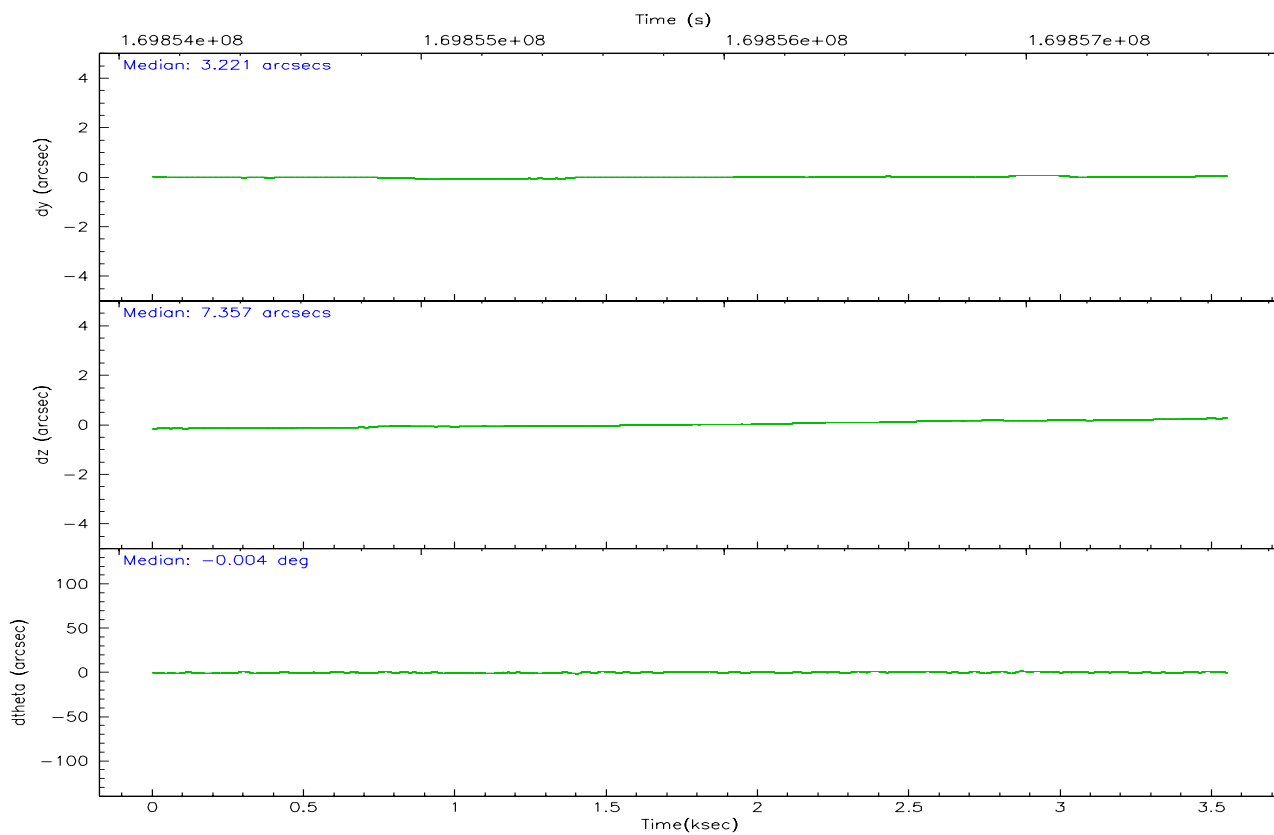
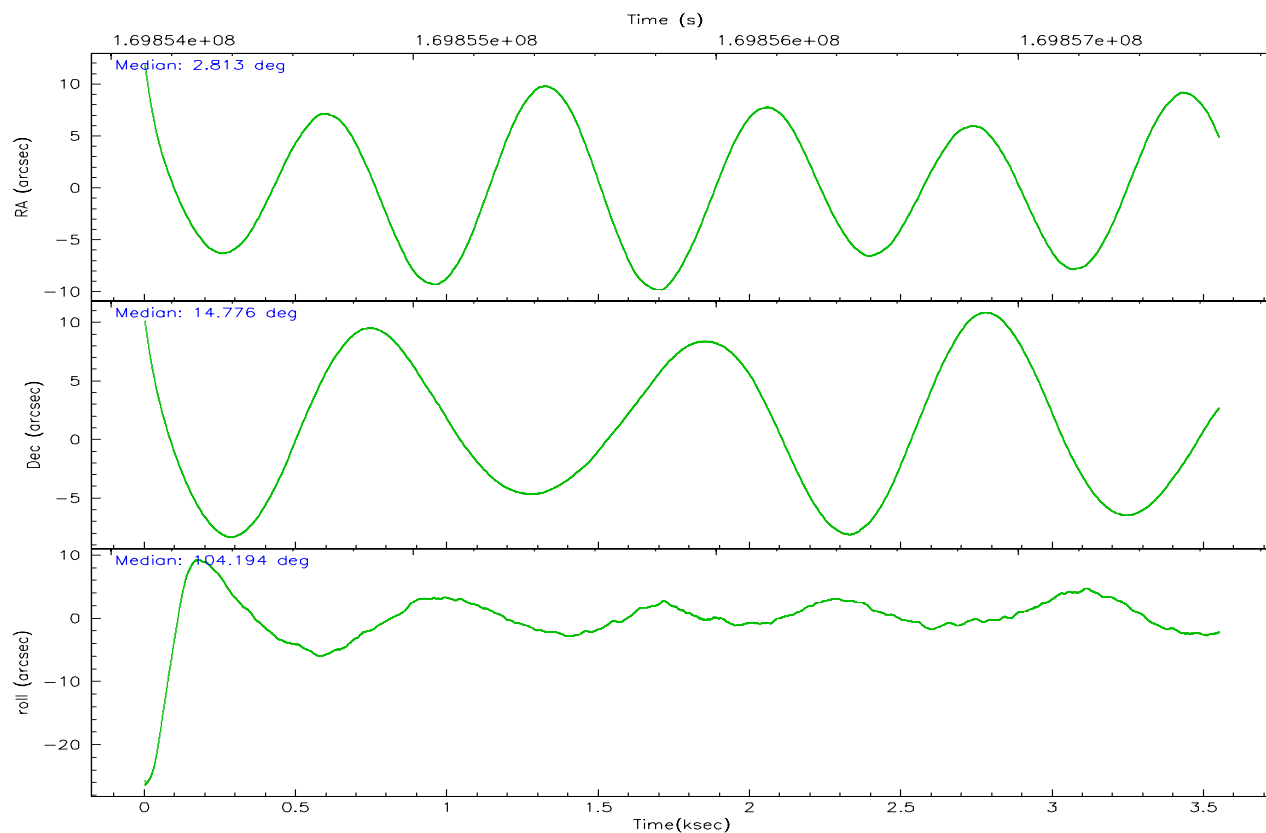
	ccd 2	ccd 3	ccd 5	ccd 6	ccd 7	ccd 8
grade 0 events	1185	1152	2214	1017	833	1938
	4%	4%	6%	4%	2%	6%
grade 1 events	10	18	101	13	22	12
	0%	0%	0%	0%	0%	0%
grade 2 events	537	542	4630	564	3053	1289
	2%	2%	12%	2%	9%	4%
grade 3 events	263	268	390	286	690	634
	1%	1%	1%	1%	2%	2%
grade 4 events	273	261	415	266	621	604
	1%	1%	1%	1%	1%	2%
grade 5 events	964	1071	1740	1074	2140	1438
	3%	4%	4%	4%	6%	4%
grade 6 events	435	466	8670	602	7105	1389
	1%	1%	24%	2%	21%	4%
grade 7 events	20883	19539	17692	19983	17923	21838
	85%	83%	49%	83%	55%	74%

2.2 Compared Parameters

Parameter	Planned	Actual	Parameter	Planned	Actual
Instrument	ACIS	ACIS	Obspar format version number	6	6
Detector	ACIS-235678	ACIS-235678	Obspar file type	PREDICTED	ACTUAL
Grating	NONE	NONE	Obspar update status	NONE	UPDATED
Data mode	FAINT	FAINT	On-chip summing requested	N	N
Observation mode	POINTING	POINTING	Subarray requested	NONE	NONE
Pointing RA	2.832516	2.812690571822409	Alternating exposures requested	N	N
Pointing Dec	14.757548	14.77662100349686	Primary exposure time	0.000000	3.2
Pointing Roll	104.035162	104.1967271858201			
SIM focus pos (mm)	-0.684267	-0.6828225247311905			
SIM defocus (mm)	0	0.001444936568705701			
SIM translation stage pos (mm)	-190.132523	-190.1425803651734			
SIM translation stage offset (mm)	0	0.01005778216563158			
Observation start time	169854233.184000	169853066.37607			
Observation start date	2003-05-20T21:42:49	2003-05-20T21:24:26			
Observation end time	169857665.184000	169858588.0513			
Observation end date	2003-05-20T22:40:01	2003-05-20T22:56:28			
Read mode	TIMED	TIMED			

2.3 Aspect



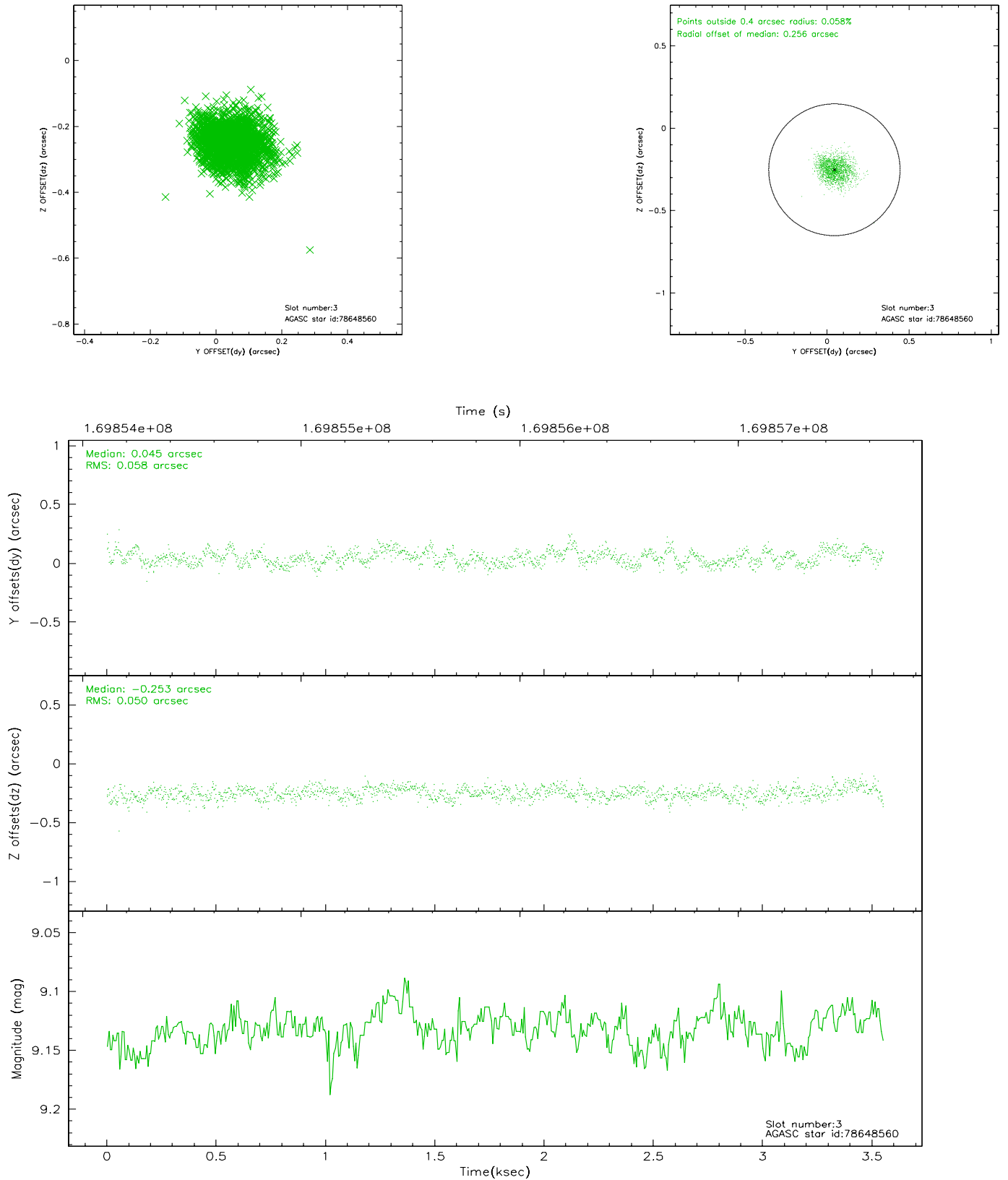


Slot Statistics

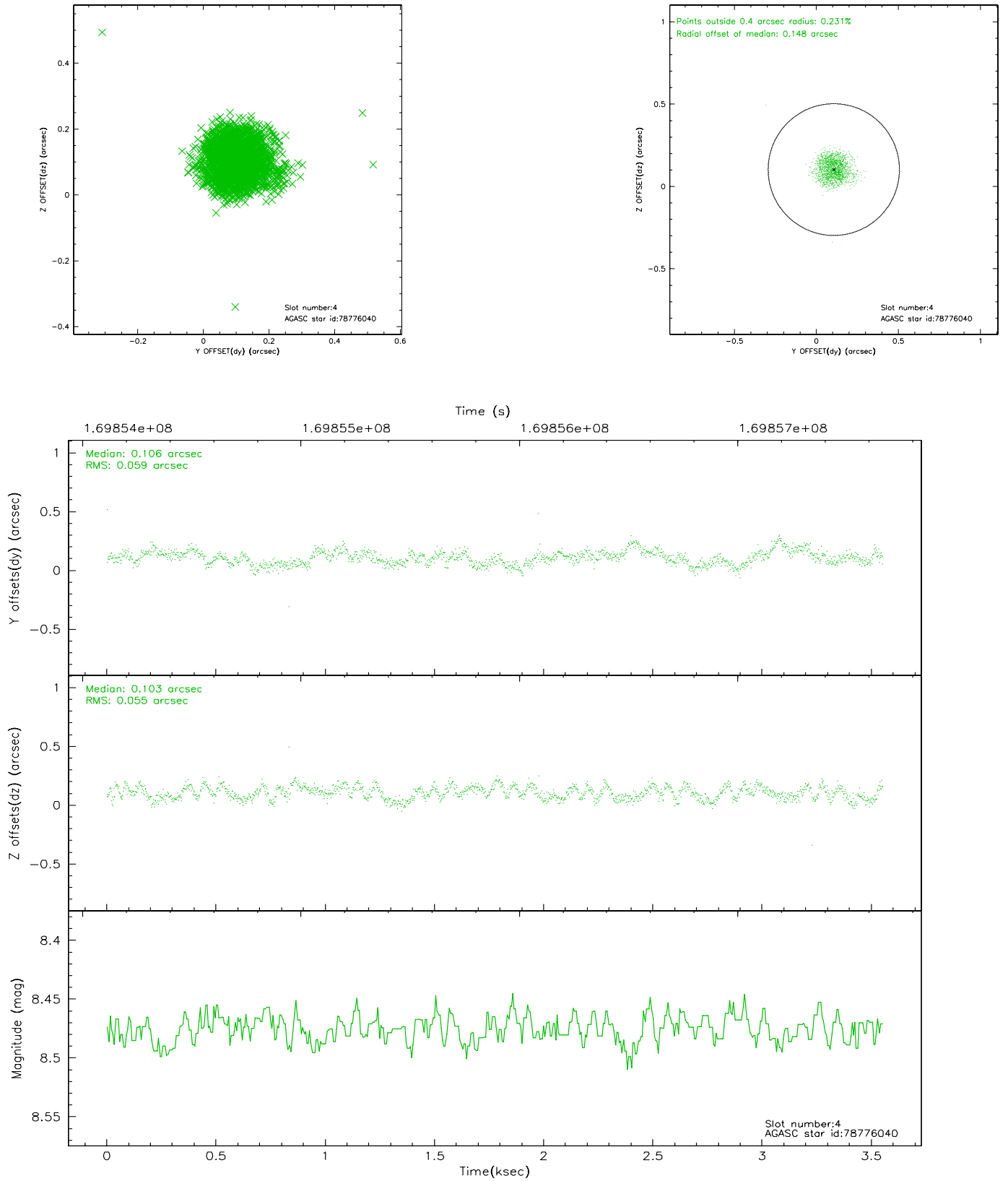
slot	status	id	mag	n_pts	med_dy	med_dz	dr1	dr2	ra	dec	mean_y	mean_z
0	FID	ACIS-S-1	7.19	862	0.023	-0.017	0.008	0.013	0.000000	0.000000	940.16	-1724.17
1	FID	ACIS-S-5	7.24	862	-0.008	0.033	0.007	0.012	0.000000	0.000000	-1807.83	171.65
2	FID	ACIS-S-6	7.35	862	-0.036	-0.004	0.010	0.016	0.000000	0.000000	403.78	817.55
3	GUIDE	78648560	9.13	1728	0.045	-0.253	0.082	0.129	2.349516	14.417641	-776.14	1930.00
4	GUIDE	78776040	8.47	1729	0.106	0.103	0.085	0.131	3.126305	14.563523	-925.11	-823.49
5	GUIDE	78779992	9.09	1729	0.165	0.212	0.079	0.129	3.476341	14.467673	-1552.95	-1925.15
6	GUIDE	154417160	8.42	1729	-0.215	-0.177	0.058	0.093	2.623213	15.231776	1832.58	290.49
7	GUIDE	154546408	9.53	1724	-0.099	0.117	0.101	0.164	2.801627	15.282058	1859.75	-353.38

2.4 Star Slots

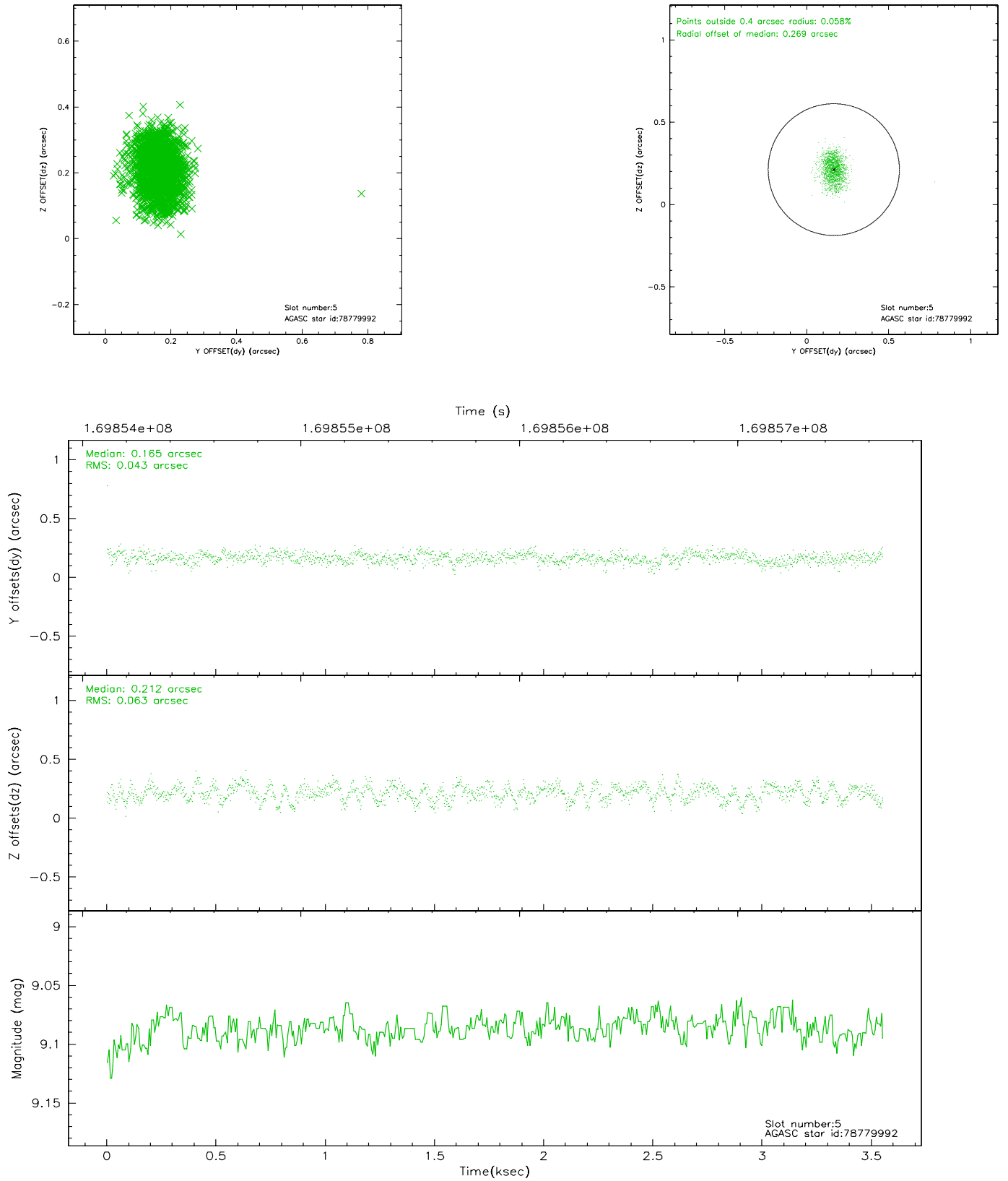
2.4.1 Slot 3



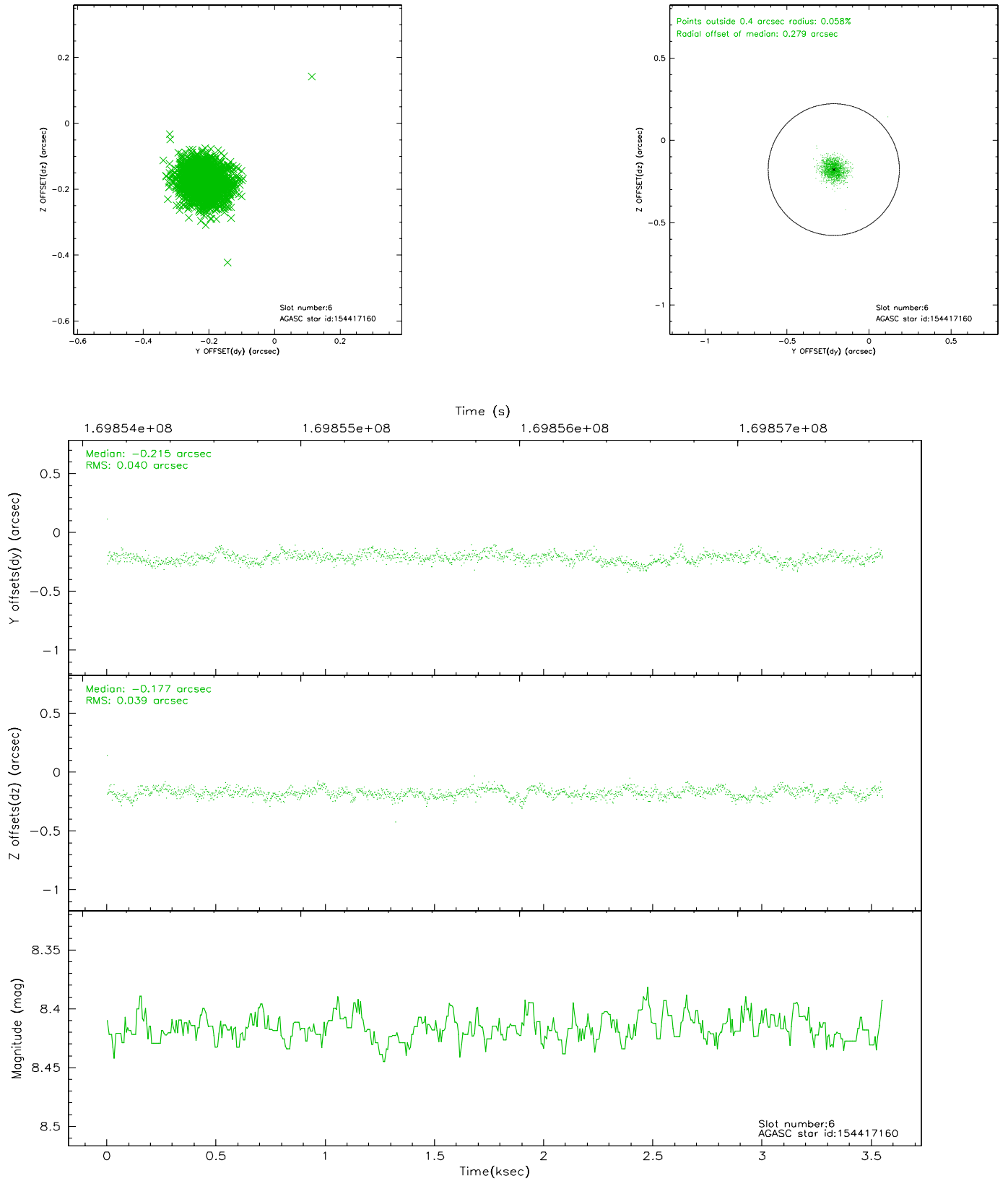
2.4.2 Slot 4



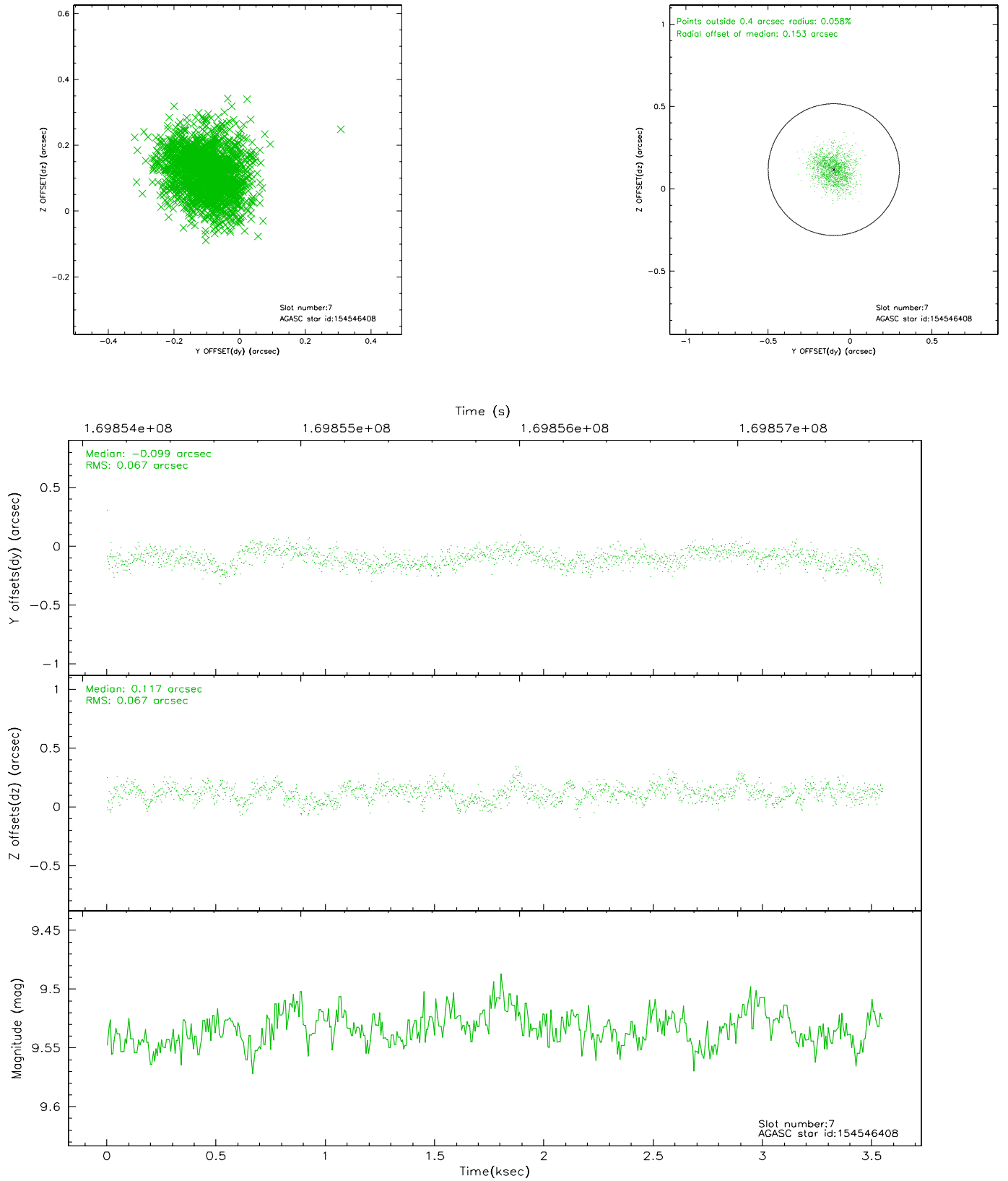
2.4.3 Slot 5



2.4.4 Slot 6

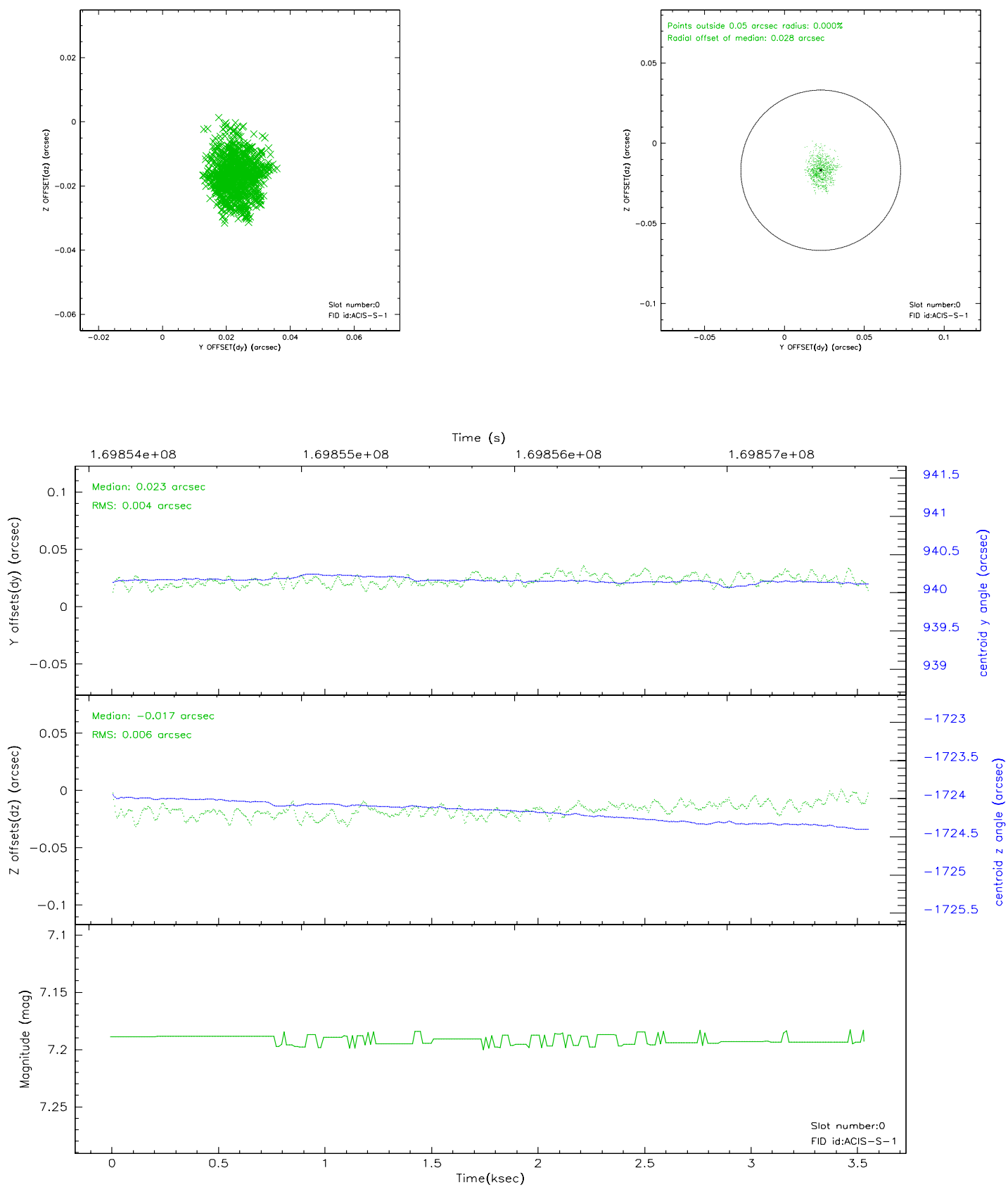


2.4.5 Slot 7

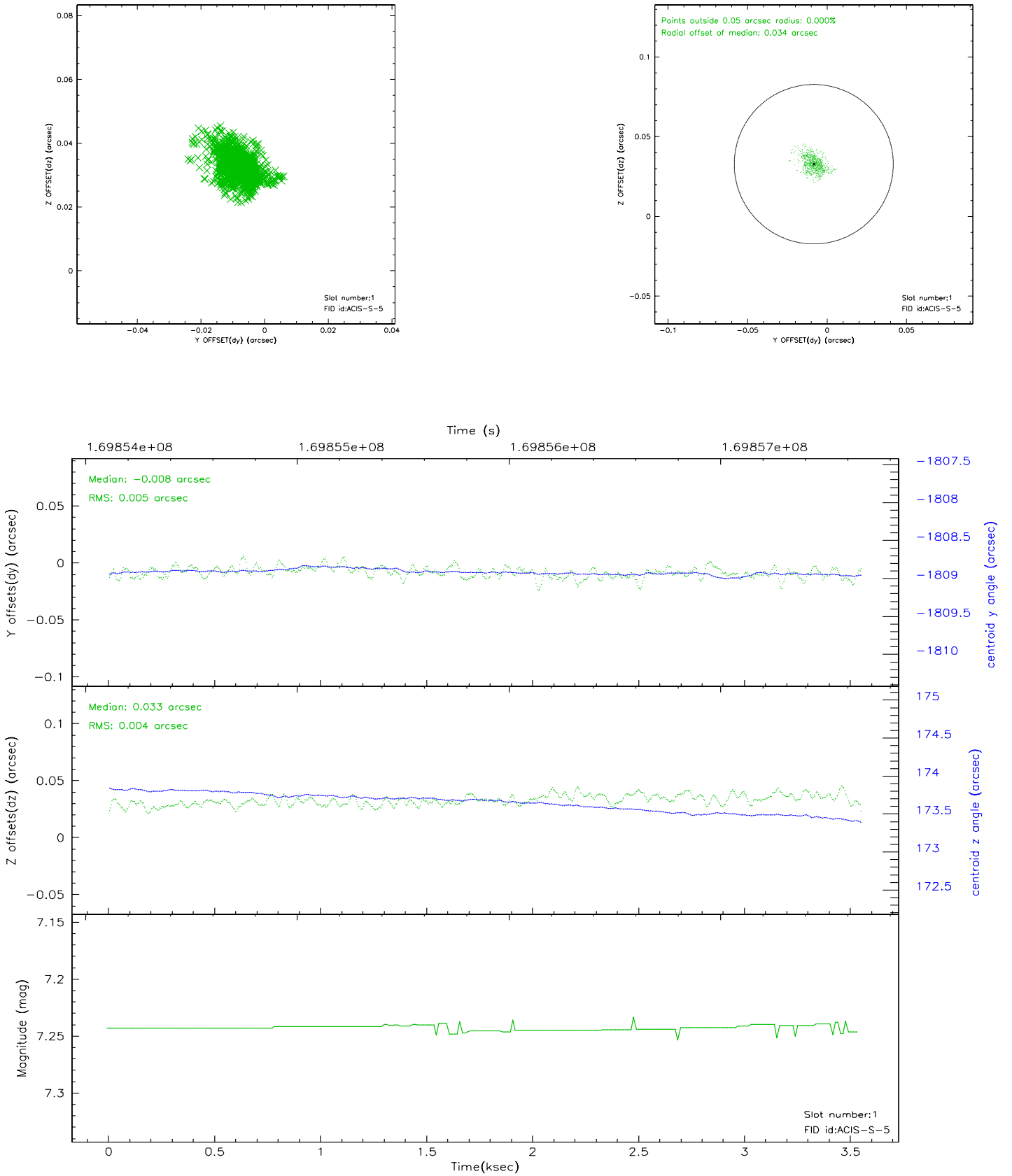


2.5 FID Slots

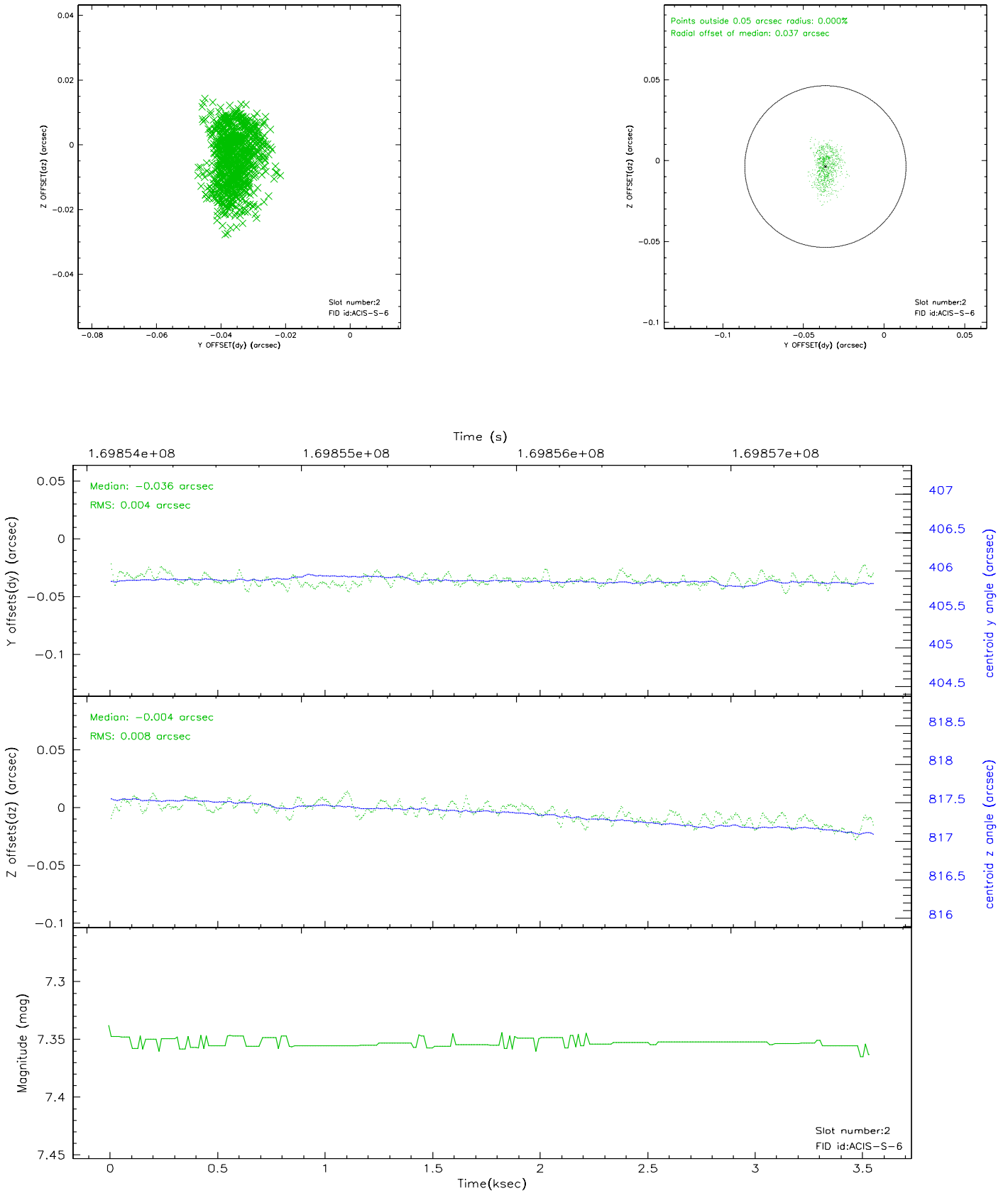
2.5.1 Slot 0



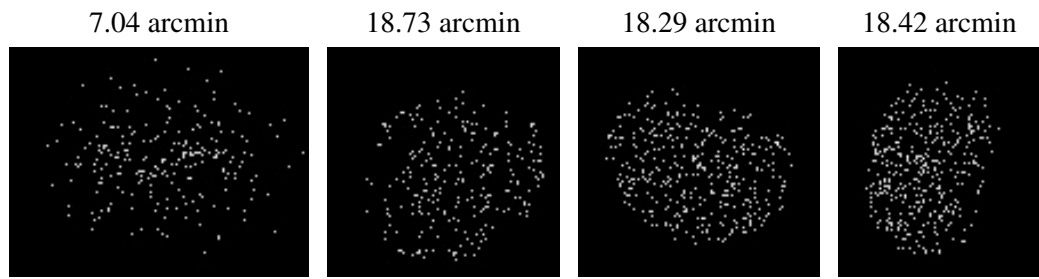
2.5.2 Slot 1



2.5.3 Slot 2



3 Point Sources



A Summary

A.1 Status

V&V Scientist	Jen Lauer
V&V Date (YYYY-MM-DD)	2006.08.13
V&V Edition	1
V&V Disposition and Status	OK
V&V Charge Time	3.539

A.2 Comments