

V&V Reference Report

L2 ASCDS Version : 8.4.5

Observation 3572 - L2 Version 3
Chandra X-Ray Center

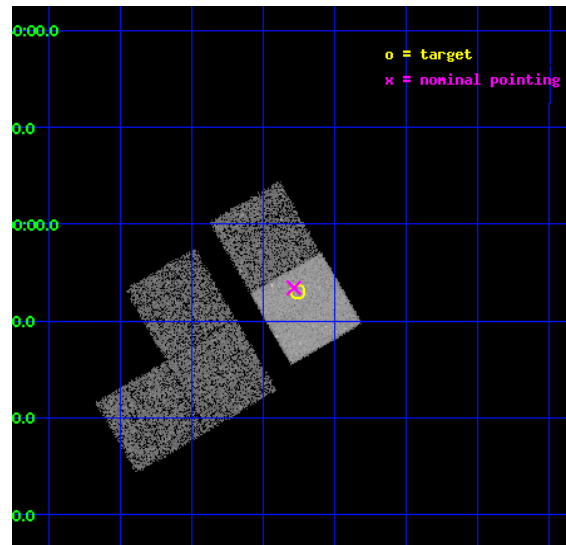
L2 Processing Date : Oct 20 2012

Contents

1	Front	2
2	OBI	3
2.1	OBI	3
2.1.1	Images	3
2.1.2	Bias	3
2.1.3	Parameters	4
2.1.4	Events	4
2.2	Compared Parameters	5
2.3	Aspect	6
2.4	Star Slots	9
2.4.1	Slot 3	9
2.4.2	Slot 4	10
2.4.3	Slot 5	11
2.4.4	Slot 6	12
2.4.5	Slot 7	13
2.5	FID Slots	14
2.5.1	Slot 0	14
2.5.2	Slot 1	15
2.5.3	Slot 2	16
A	Summary	17
A.1	Status	17
A.2	Comments	17

1 Front

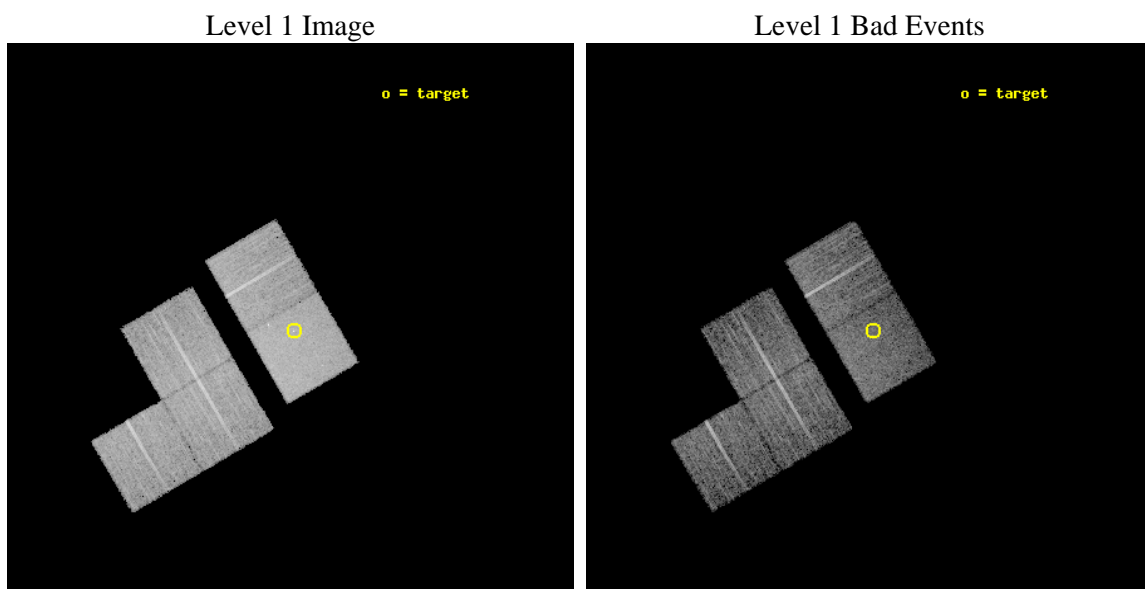
seq_num	700634	Sequence number
obs_id	3572	Observation id
title	A STUDY OF QUASAR EVOLUTION WITH THE AID OF LENSING	Proposal title
observer	Professor Gordon Garmire	Principal investigator
object	LBSQ1009-0252	Source name
dtcycle	0	
cycle	P	events from which exps? Prim/Second/Both
ra_targ	153.065417	Observer's specified target RA [deg]
dec_targ	-3.117222	Observer's specified target Dec [deg]
ra_nom	153.07167758111	Nominal RA [deg]
dec_nom	-3.1098415972747	Nominal Dec [deg]
roll_nom	59.680302807689	Nominal Roll [deg]
revision	3	Processing version of data
ontime	9506.575720638	Sum of GTIs [s]
livetime	9382.3653102087	Livetime [s]
ontime1	9503.2705604732	Sum of GTIs [s]
ontime2	9506.4526006281	Sum of GTIs [s]
ontime3	9503.3526704013	Sum of GTIs [s]
ontime6	9506.5346806347	Sum of GTIs [s]
ontime7	9506.575720638	Sum of GTIs [s]
l2events	57712	Number of level 2 events



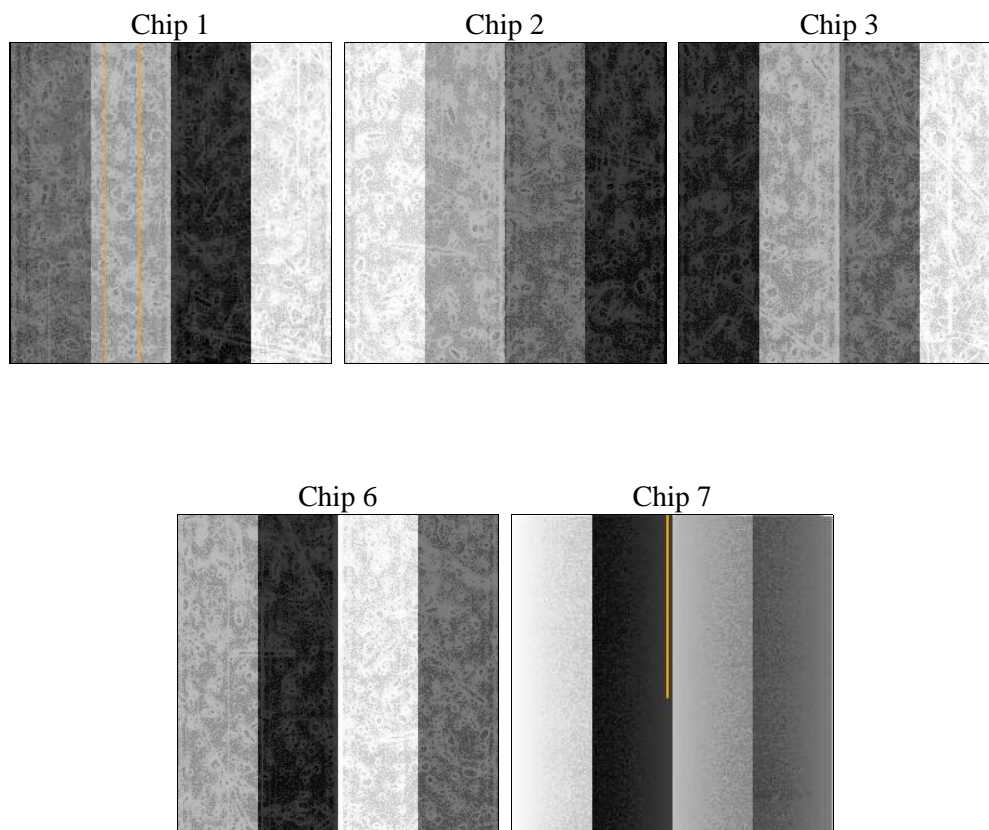
2 OBI

2.1 OBI

2.1.1 Images



2.1.2 Bias



2.1.3 Parameters

obi_num	1	Obi number	sched_exp_time	9400.000000	[s] Scheduled observation exposure time
ascdsver	8.4.5	Processing system revision	ontime	9506.575720638	Sum of GTIs [s]
caldsver	4.5.2	 	ontime1	9503.2705604732	Sum of GTIs [s]
date	2012-10-20T16:43:22	Date and time of file creation	ontime2	9506.4526006281	Sum of GTIs [s]
revision	3	Processing version of data	ontime3	9503.3526704013	Sum of GTIs [s]
			ontime6	9506.5346806347	Sum of GTIs [s]
			ontime7	9506.575720638	Sum of GTIs [s]
			l1events	319571	Number of level 1 events

2.1.4 Events

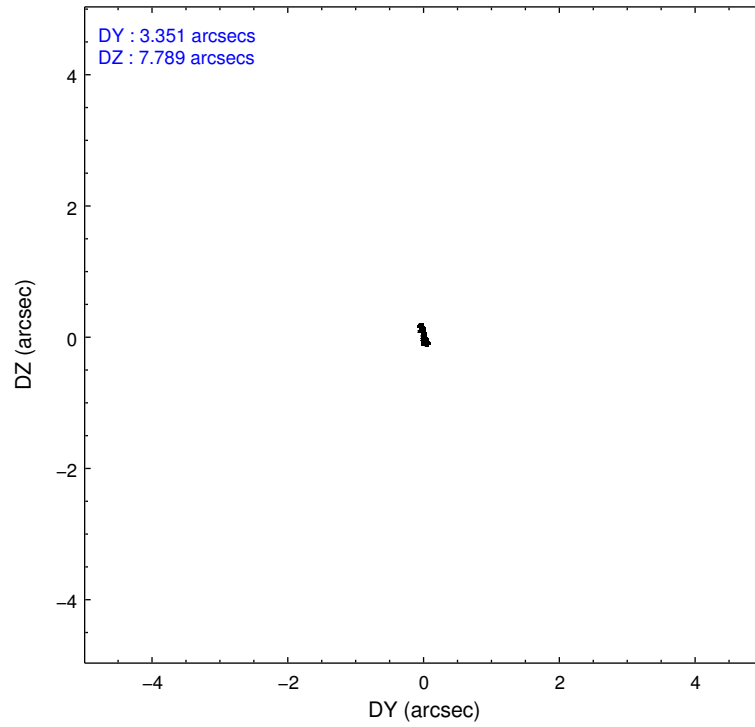
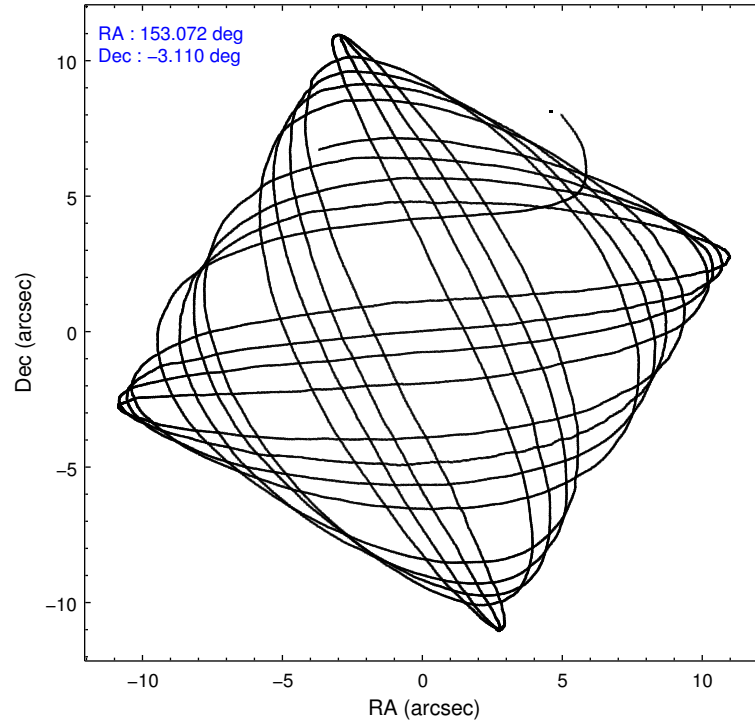
	ccd 1	ccd 2	ccd 3	ccd 6	ccd 7
level 1 events	54655	60254	59636	63529	81497
rejected events	47121	53349	52746	56253	47821
rejected %	86%	88%	88%	88%	58%

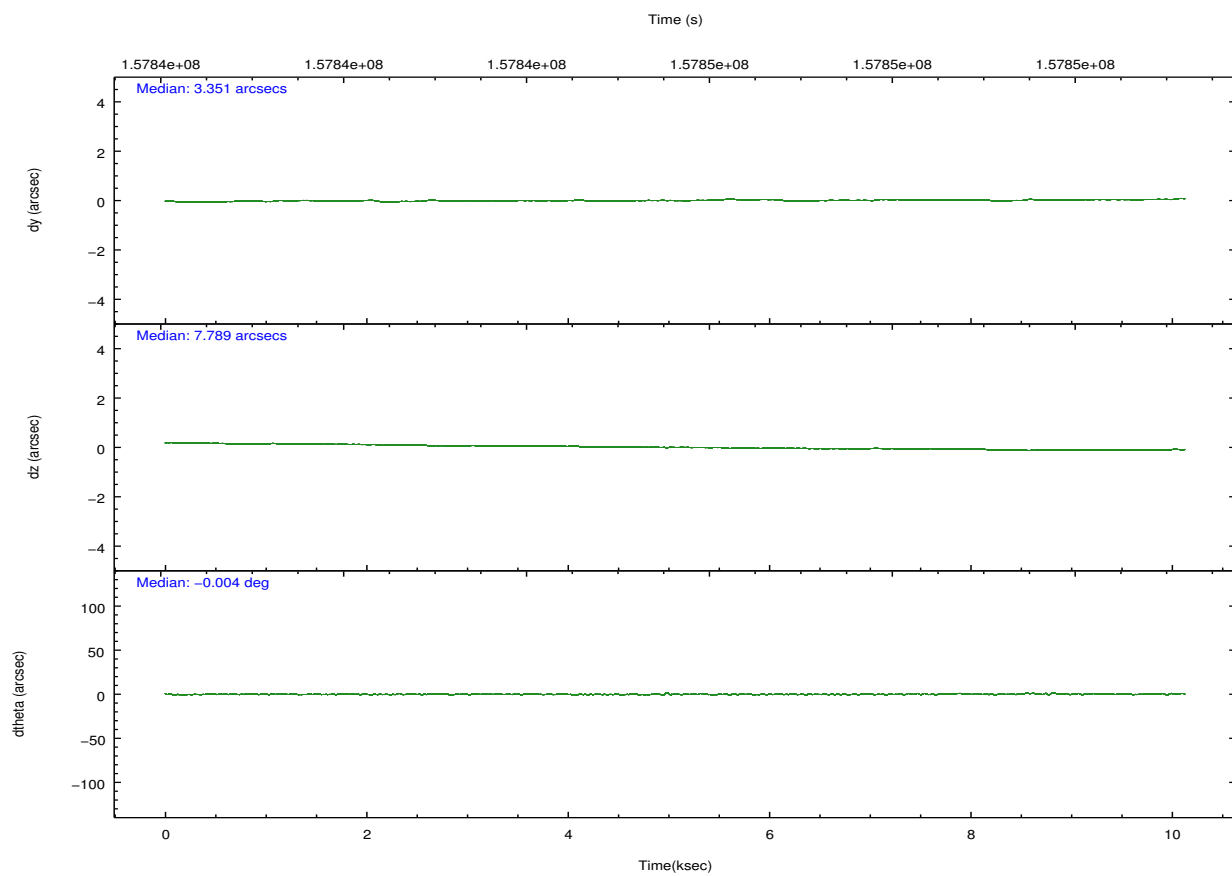
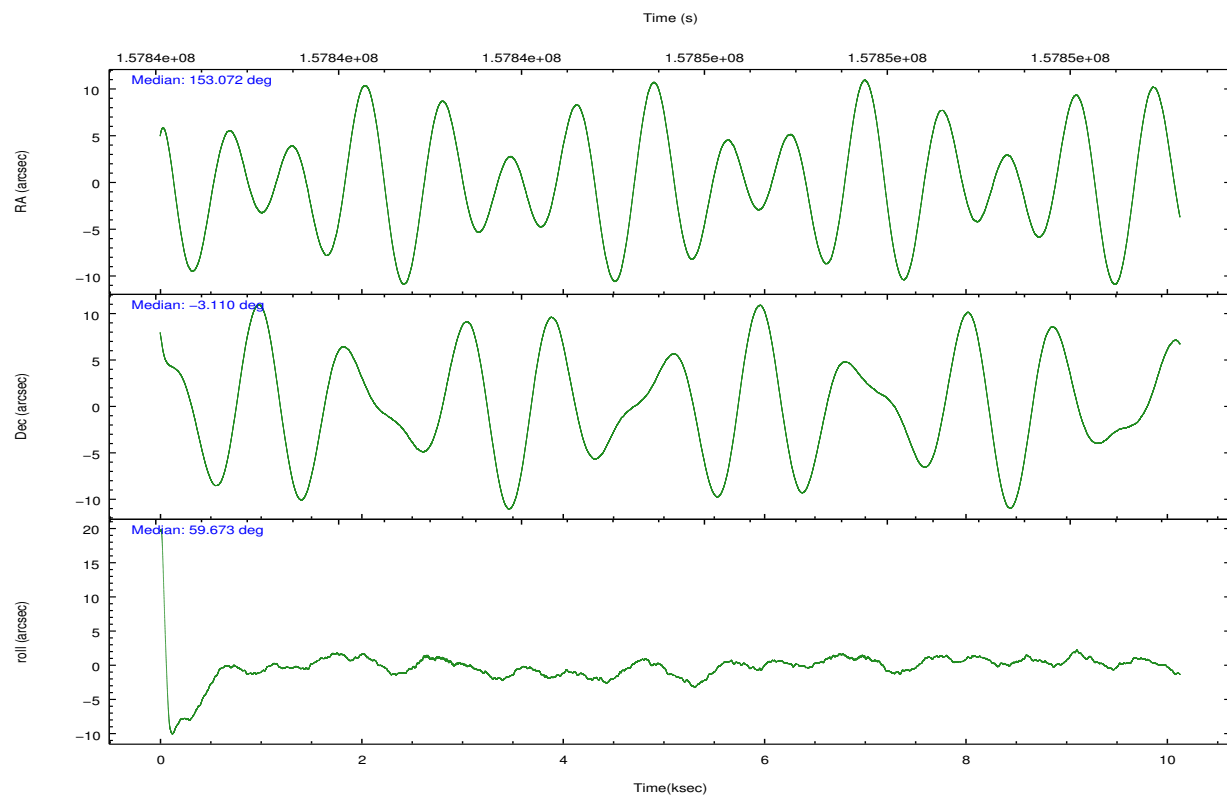
	ccd 1	ccd 2	ccd 3	ccd 6	ccd 7
grade 0 events	2969	3078	3051	2879	3292
	5%	5%	5%	4%	4%
grade 1 events	22	36	35	19	72
	0%	0%	0%	0%	0%
grade 2 events	1544	1374	1327	1522	6527
	2%	2%	2%	2%	8%
grade 3 events	780	670	720	730	3219
	1%	1%	1%	1%	3%
grade 4 events	754	650	651	664	2965
	1%	1%	1%	1%	3%
grade 5 events	2372	2222	2630	2749	7733
	4%	3%	4%	4%	9%
grade 6 events	1491	1134	1142	1482	17683
	2%	1%	1%	2%	21%
grade 7 events	44723	51090	50080	53484	40006
	81%	84%	83%	84%	49%

2.2 Compared Parameters

Parameter	Planned	Actual	Parameter	Planned	Actual
Instrument	ACIS	ACIS	Obspar format version number	7	7
Detector	ACIS-12367	ACIS-12367	Obspar file type	PREDICTED	ACTUAL
Grating	NONE	NONE	Obspar update status	NONE	UPDATED
Data mode	VFAINT	VFAINT	Number of optional ACIS chips dropped	0	0
Observation mode	POINTING	POINTING	On-chip summing requested	N	N
[deg] Pointing RA	153.071914	153.0716775811102	Subarray requested	NONE	NONE
[deg] Pointing Dec	-3.137091	-3.1098415972747	Alternating exposures requested	N	N
[deg] Pointing Roll	59.523643	59.68030280768943	[s] Primary exposure time	0.000000	3.1
[mm] SIM focus pos	-0.684267	-0.6828225247311905			
[mm] SIM defocus	0	0.001444936568705701			
[mm] SIM translation stage pos	-190.132523	-190.1400660498719			
[mm] SIM translation stage offset	0	0.00754346686406393			
[s] Observation start time (MET)	157841285.184000	157840052.54536			
Observation start date	2003-01-01T20:47:01	2003-01-01T20:27:32			
[s] Observation end time (MET)	157850685.184000	157851465.40834			
Observation end date	2003-01-01T23:23:41	2003-01-01T23:37:45			
Read mode	TIMED	TIMED			

2.3 Aspect



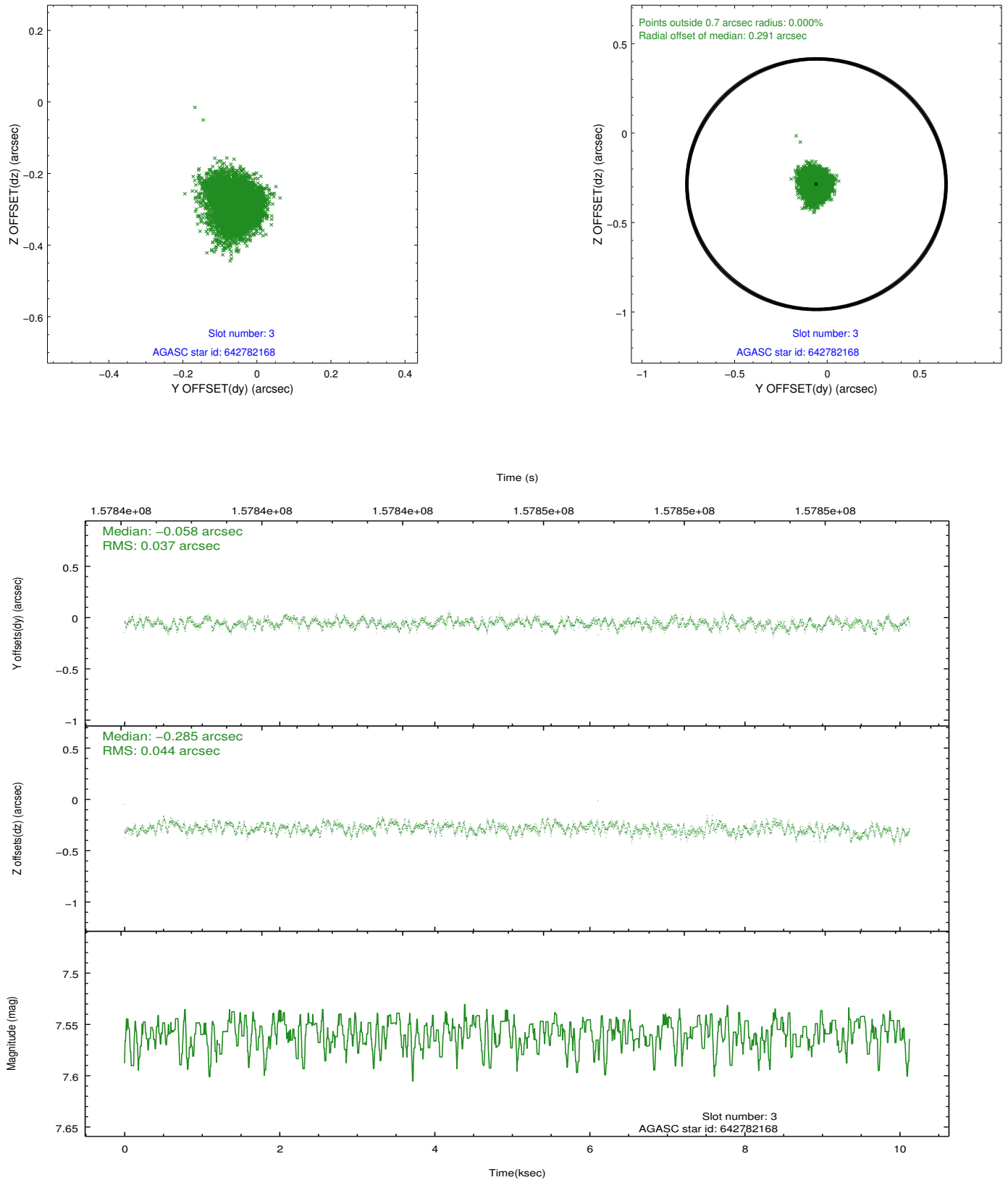


Slot Statistics

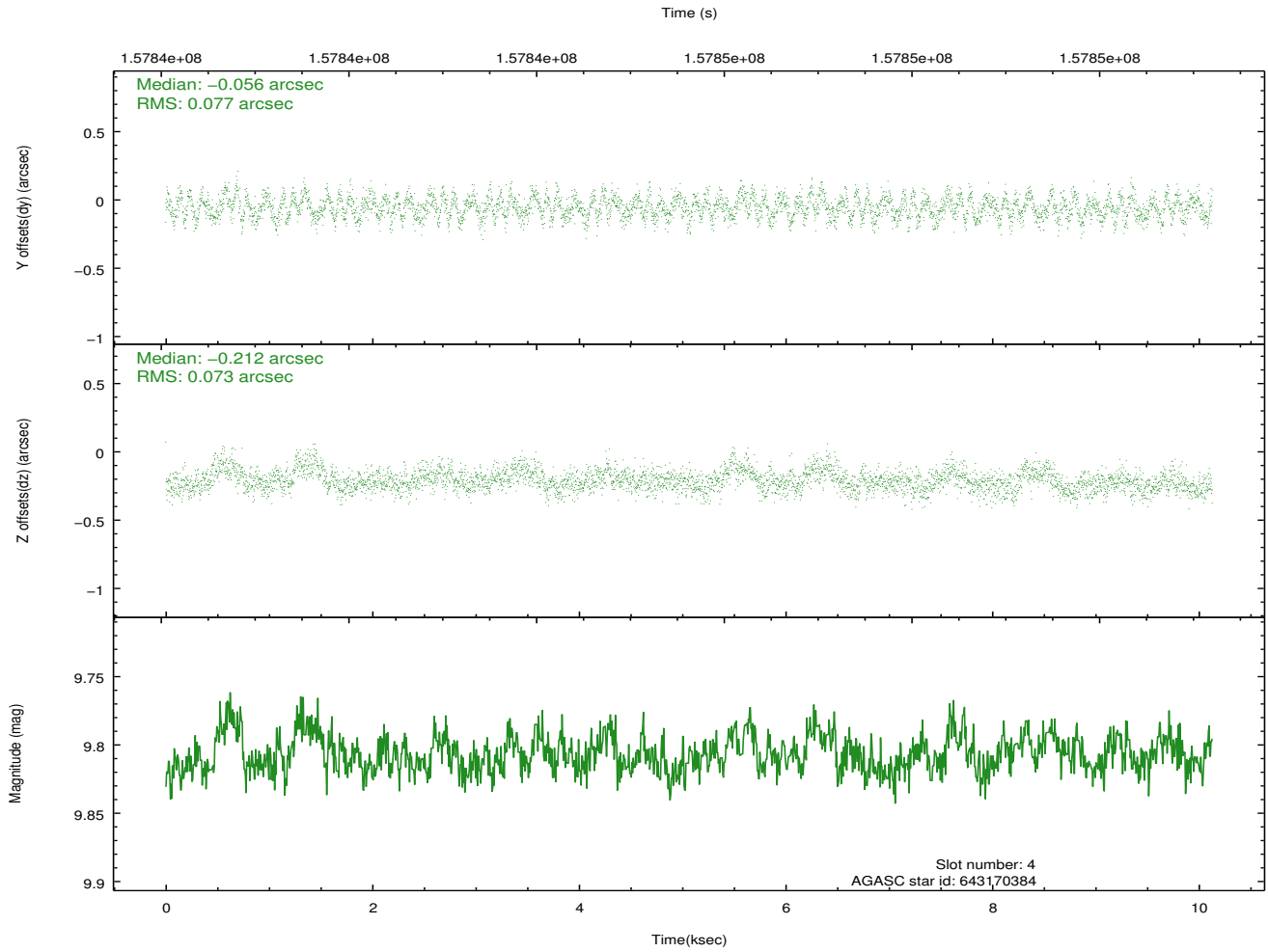
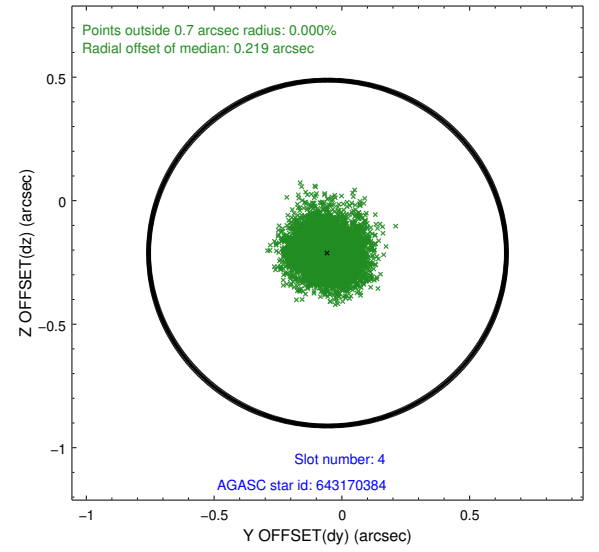
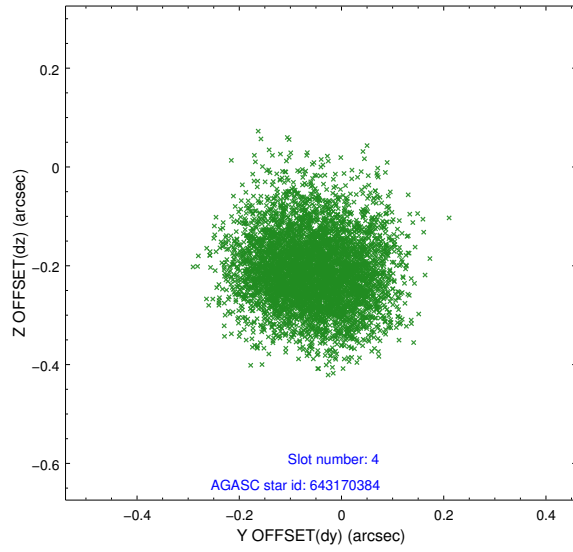
slot	status	id	mag	n_pts	med_dy	med_dz	dr1	dr2	ra	dec	mean_y	mean_z
0	FID	ACIS-S-2	7.12	2471	-0.013	-0.012	0.010	0.019	0.000000	0.000000	-756.03	-1728.99
1	FID	ACIS-S-4	7.20	2471	0.016	0.010	0.011	0.029	0.000000	0.000000	2157.05	178.96
2	FID	ACIS-S-5	7.24	2471	-0.033	0.010	0.010	0.022	0.000000	0.000000	-1808.21	173.24
3	GUIDE	642782168	7.56	4942	-0.058	-0.285	0.061	0.098	152.755476	-2.415068	1662.59	2299.08
4	GUIDE	643170384	9.81	4940	-0.056	-0.212	0.114	0.180	152.791025	-2.515599	1415.86	2005.84
5	GUIDE	643172392	9.74	4941	-0.102	0.230	0.114	0.184	153.736407	-3.070471	1418.23	-1936.77
6	GUIDE	643173600	8.35	4941	-0.086	0.182	0.070	0.111	153.677360	-2.875847	1914.62	-1399.47
7	GUIDE	643175936	8.27	4941	0.306	0.087	0.064	0.102	153.073623	-3.745671	-1884.95	-1117.03

2.4 Star Slots

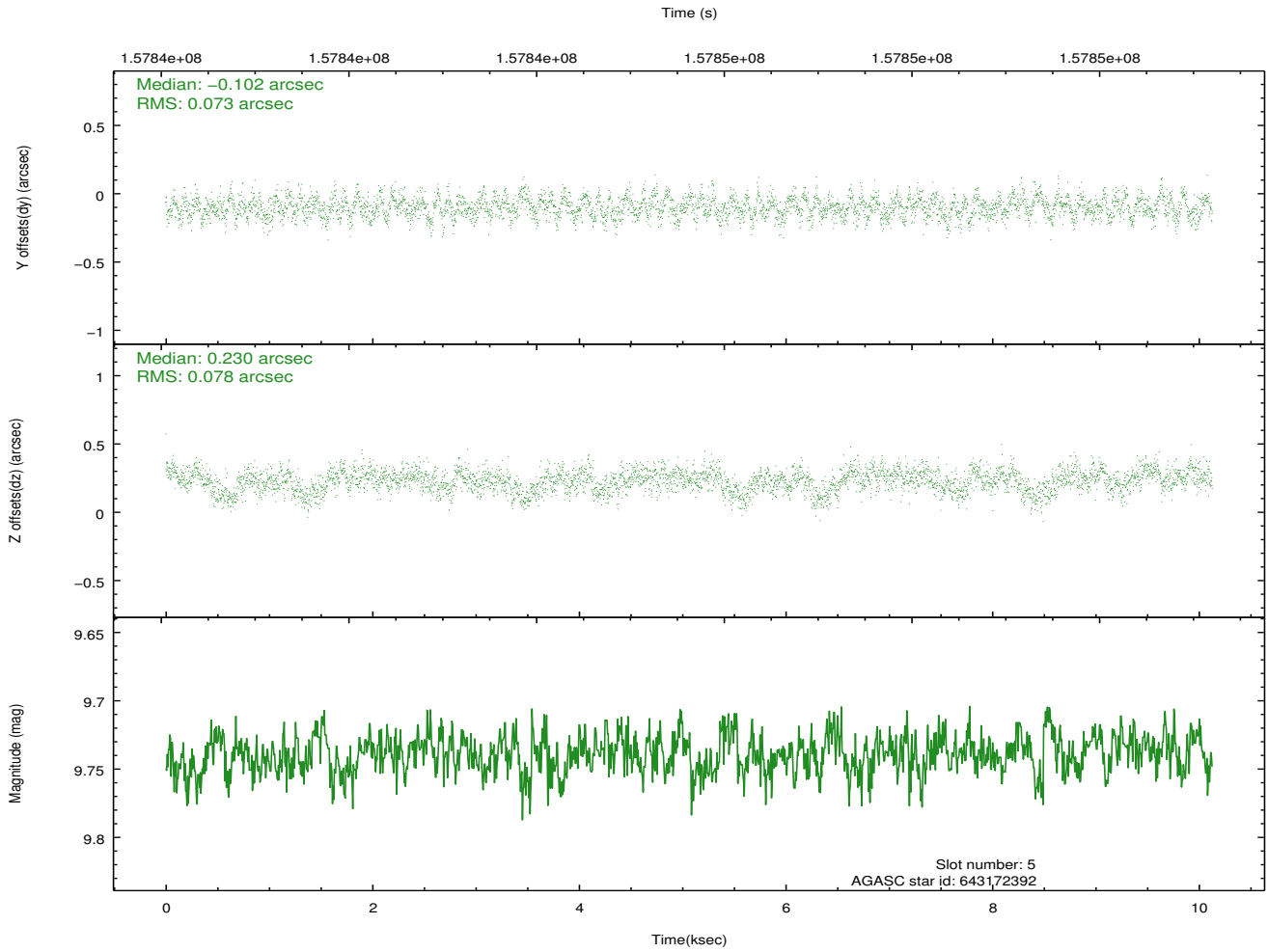
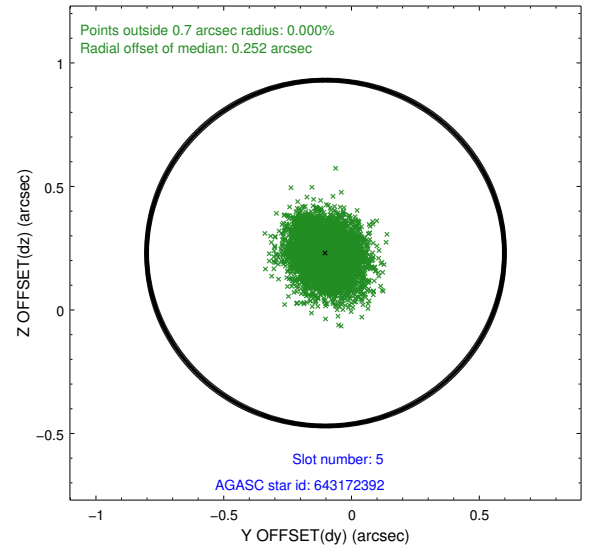
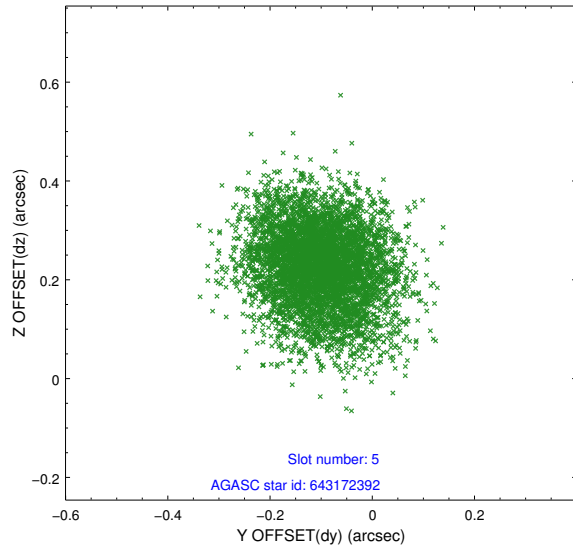
2.4.1 Slot 3



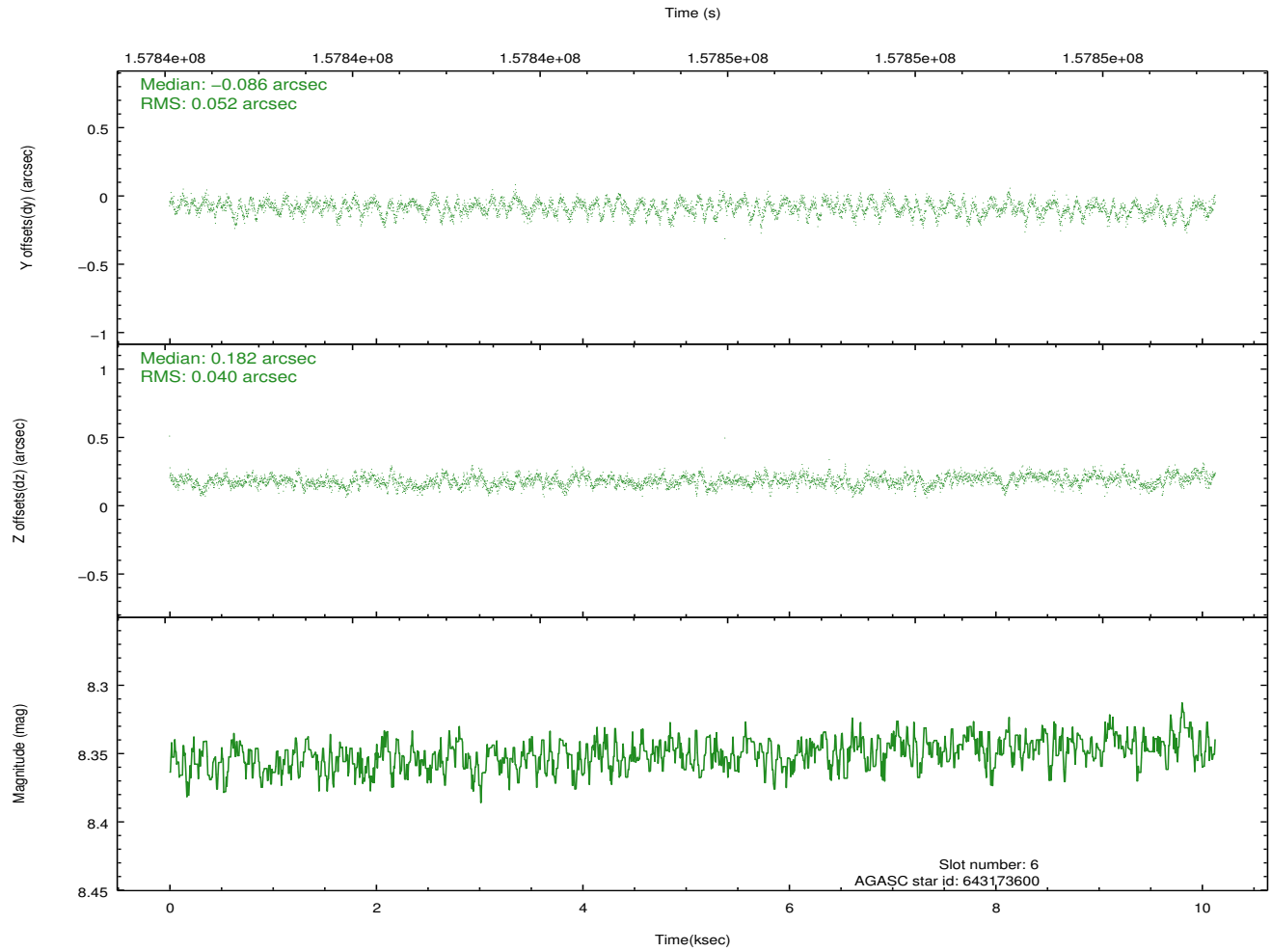
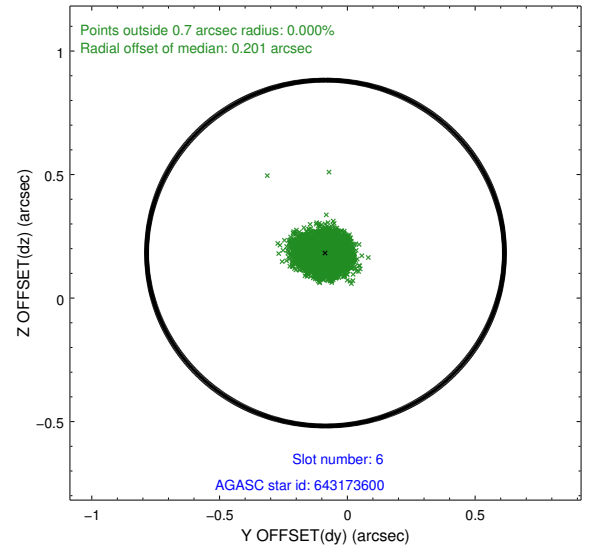
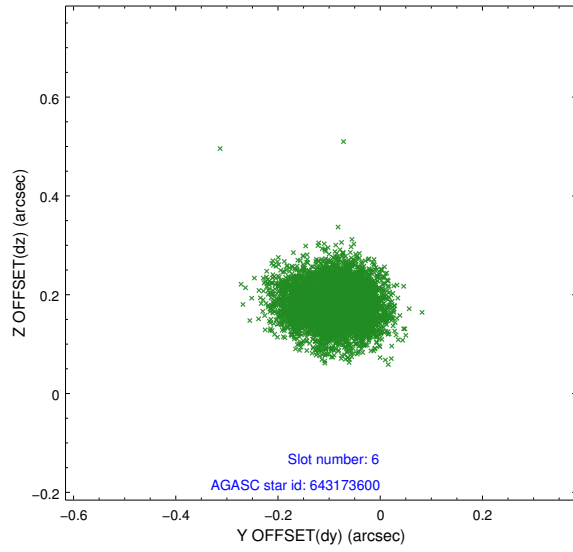
2.4.2 Slot 4



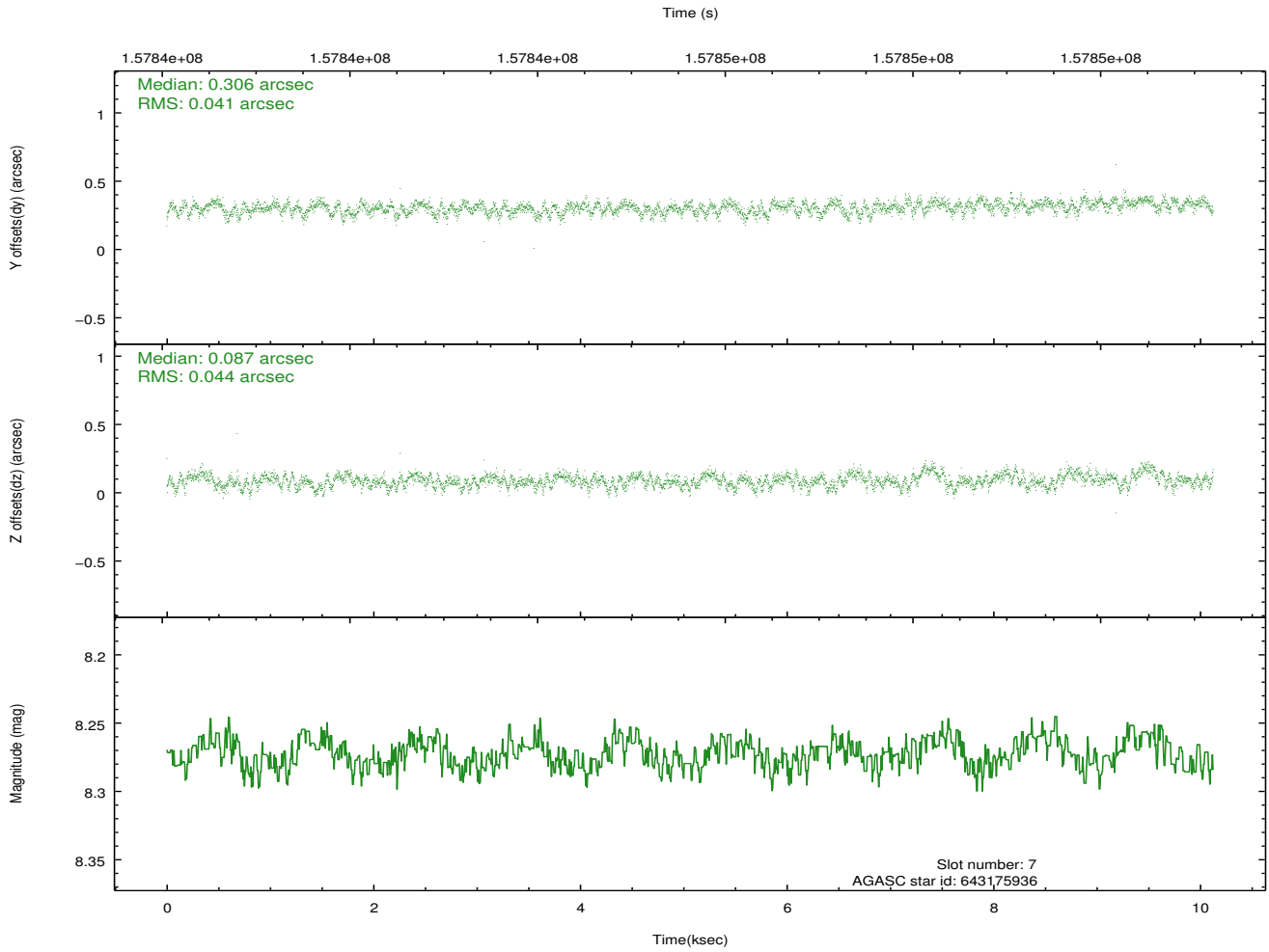
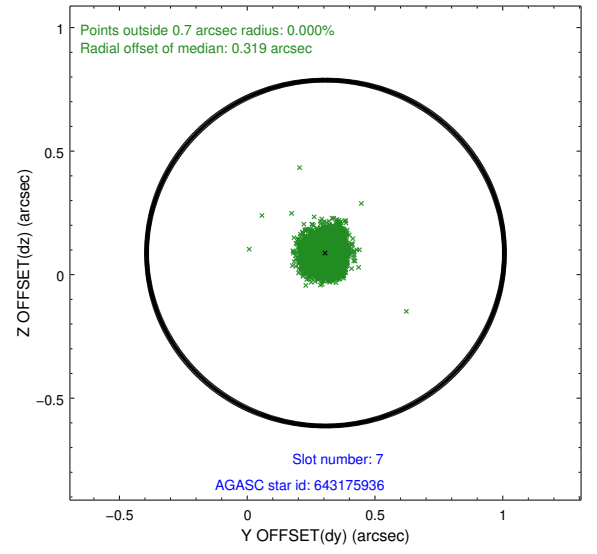
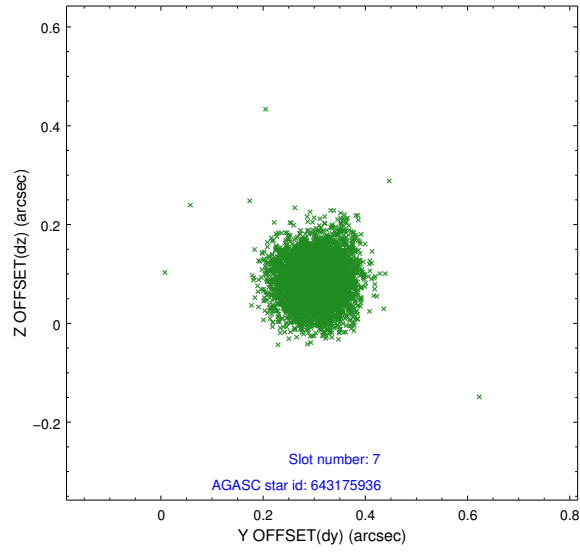
2.4.3 Slot 5



2.4.4 Slot 6

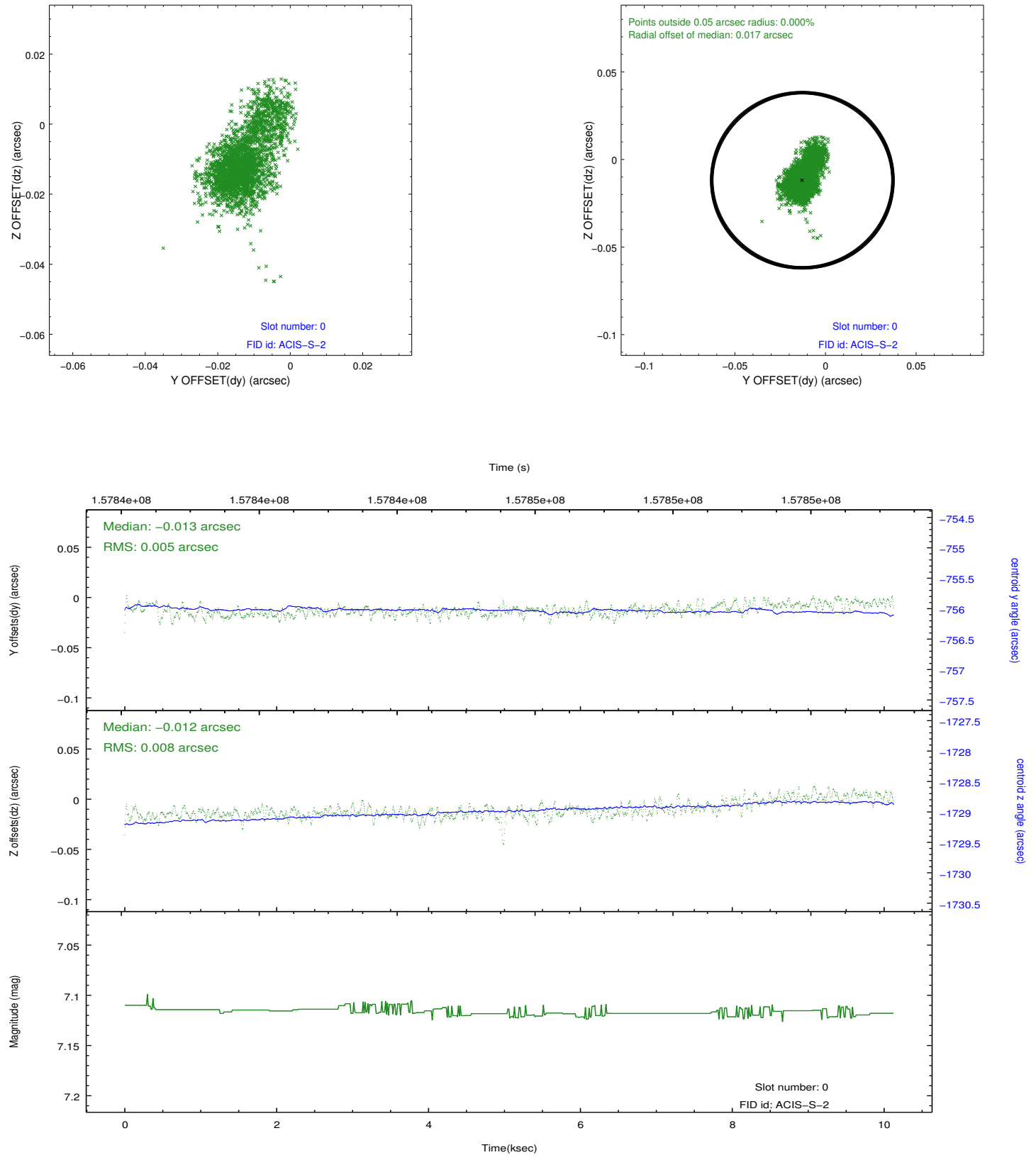


2.4.5 Slot 7

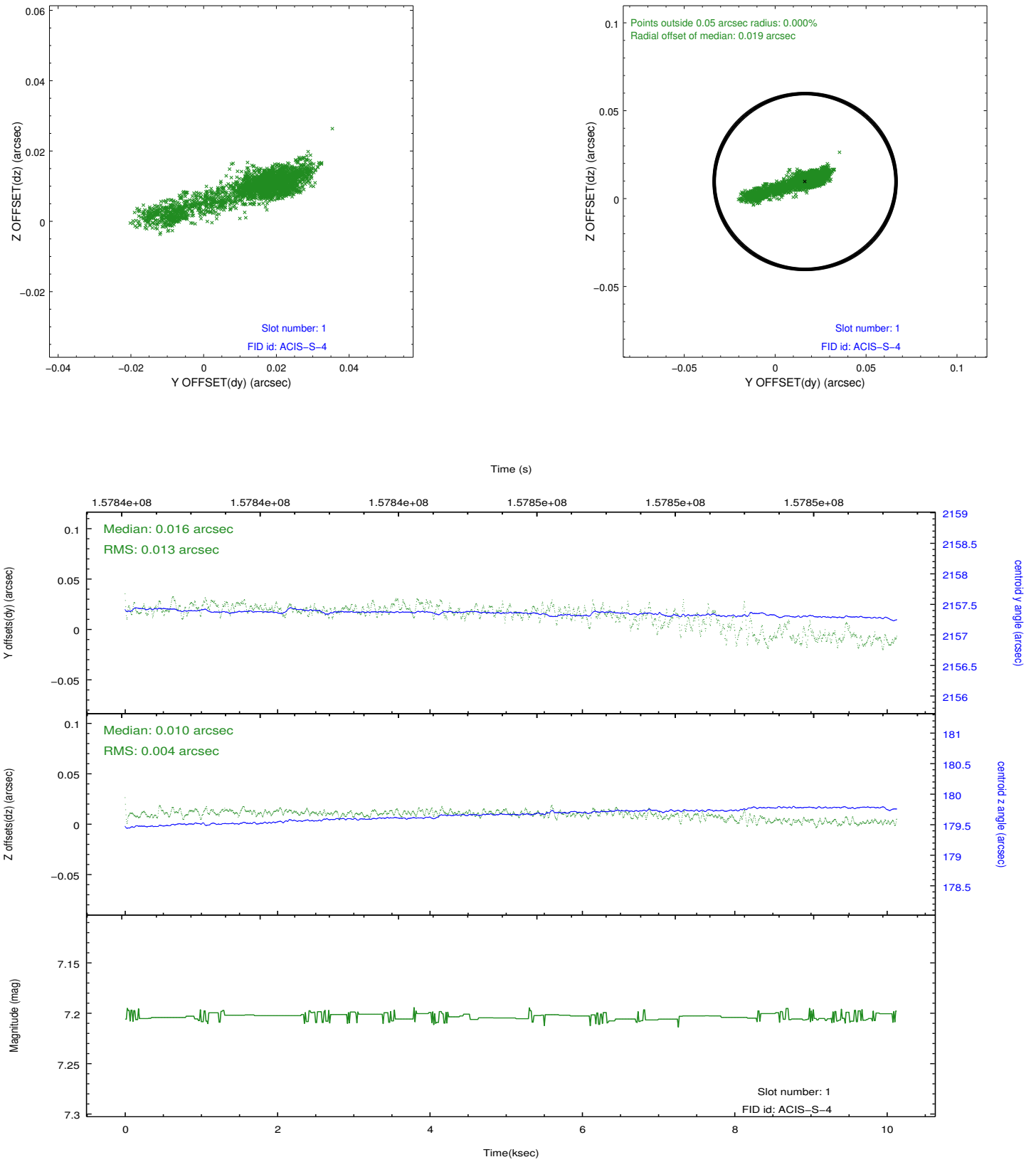


2.5 FID Slots

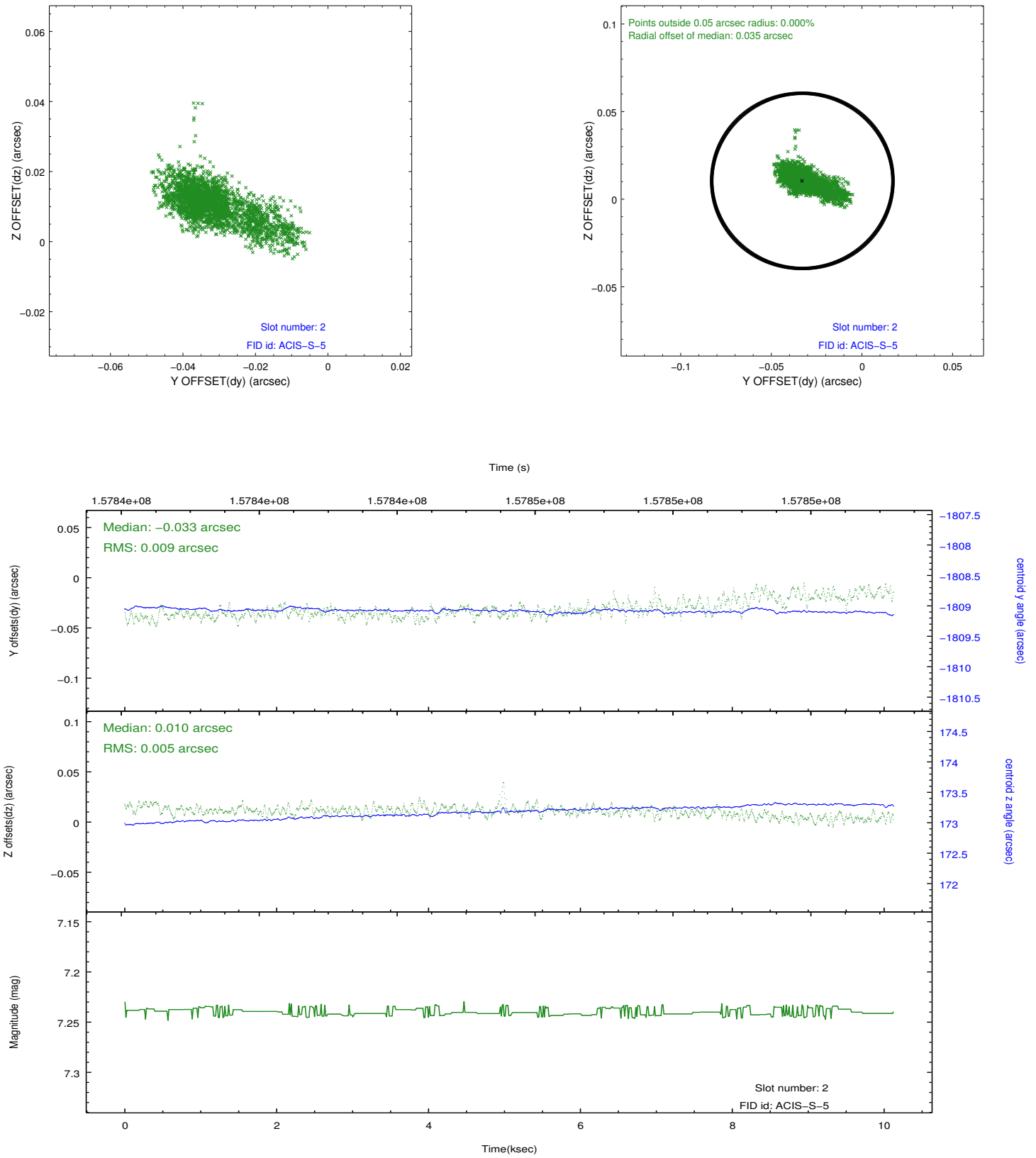
2.5.1 Slot 0



2.5.2 Slot 1



2.5.3 Slot 2



A Summary

A.1 Status

V&V Scientist	Jen Lauer
V&V Date (YYYY-MM-DD)	2012.10.31
V&V Edition	1
V&V Disposition and Status	OK
V&V Charge Time	9.507

A.2 Comments