

V&V Reference Report

L2 ASCDS Version : 8.4.5

Observation 3556 - L2 Version 3
Chandra X-Ray Center

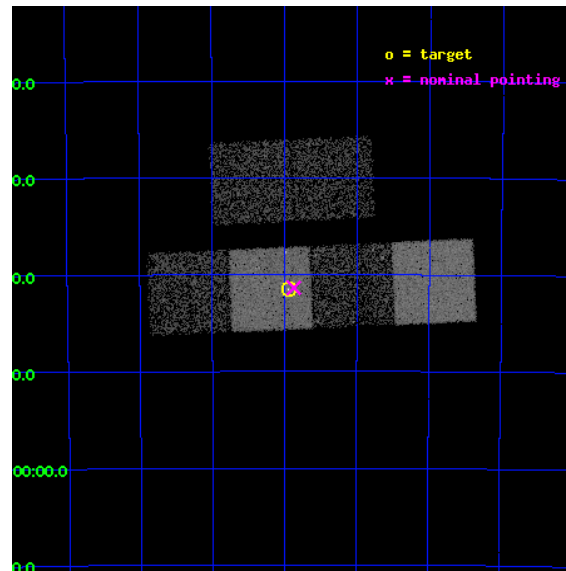
L2 Processing Date : Oct 23 2012

Contents

1	Front	2
2	OBI	3
2.1	OBI	3
2.1.1	Images	3
2.1.2	Bias	3
2.1.3	Parameters	4
2.1.4	Events	4
2.2	Compared Parameters	5
2.3	Aspect	6
2.4	Star Slots	9
2.4.1	Slot 3	9
2.4.2	Slot 4	10
2.4.3	Slot 5	11
2.4.4	Slot 6	12
2.4.5	Slot 7	13
2.5	FID Slots	14
2.5.1	Slot 0	14
2.5.2	Slot 1	15
2.5.3	Slot 2	16
A	Summary	17
A.1	Status	17
A.2	Comments	17

1 Front

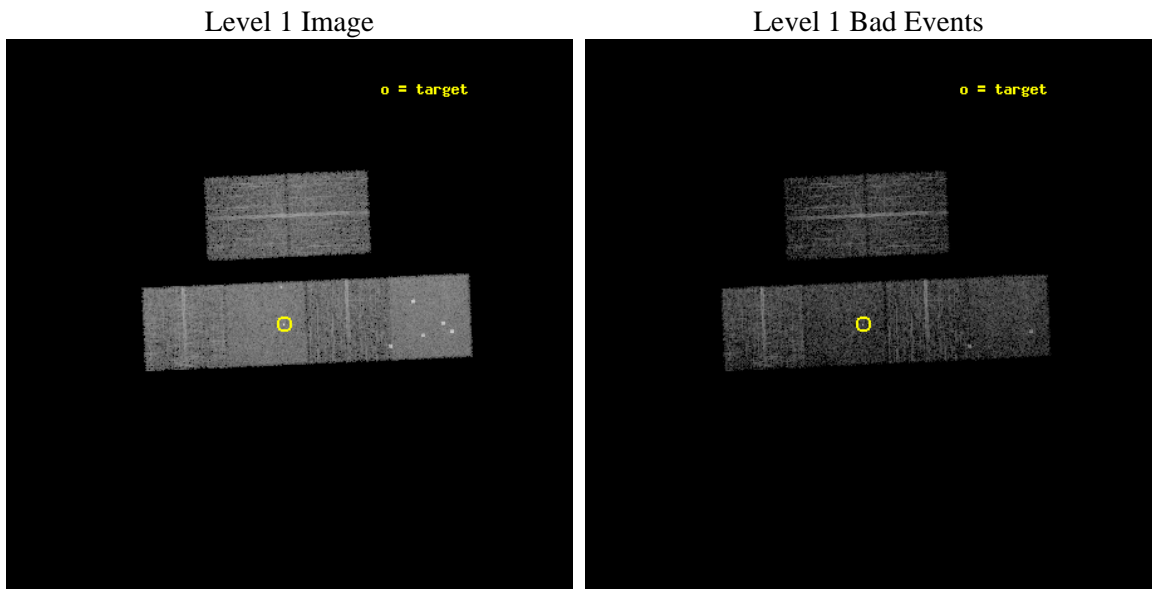
seq_num	700618	Sequence number
obs_id	3556	Observation id
title	MONITORING THE X-RAY TRANSIENT AGN RX J2217.9-5941	Proposal title
observer	Dr. Peter Predehl	Principal investigator
object	RX J2217.9-5941	Source name
dtcycle	0	
cycle	P	events from which exps? Prim/Second/Both
ra_targ	334.485833	Observer's specified target RA [deg]
dec_targ	-59.691667	Observer's specified target Dec [deg]
ra_nom	334.46728258805	Nominal RA [deg]
dec_nom	-59.689593475117	Nominal Dec [deg]
roll_nom	177.42548725348	Nominal Roll [deg]
revision	3	Processing version of data
ontime	4751.9999822974	Sum of GTIs [s]
livetime	4691.8272972107	Livetime [s]
ontime2	4751.9999822974	Sum of GTIs [s]
ontime3	4751.9999822974	Sum of GTIs [s]
ontime5	4751.9999822974	Sum of GTIs [s]
ontime6	4751.9999822974	Sum of GTIs [s]
ontime7	4751.9999822974	Sum of GTIs [s]
ontime8	4748.7591516078	Sum of GTIs [s]
l2events	54854	Number of level 2 events



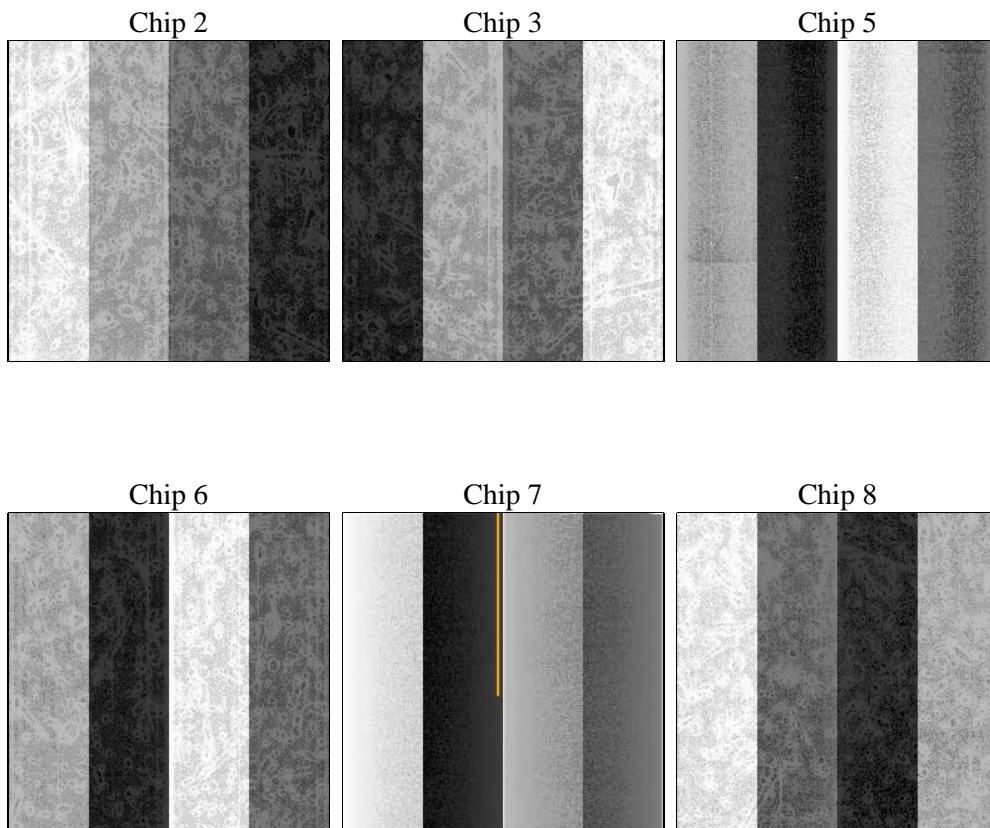
2 OBI

2.1 OBI

2.1.1 Images



2.1.2 Bias



2.1.3 Parameters

obi_num	0	Obi number	sched_exp_time	5000.000000	[s] Scheduled observation exposure time
ascdsver	8.4.5	Processing system revision	ontime	4751.9999822974	Sum of GTIs [s]
caldbver	4.5.2	 	ontime2	4751.9999822974	Sum of GTIs [s]
date	2012-10-23T11:02:19	Date and time of file creation	ontime3	4751.9999822974	Sum of GTIs [s]
revision	3	Processing version of data	ontime5	4751.9999822974	Sum of GTIs [s]
			ontime6	4751.9999822974	Sum of GTIs [s]
			ontime7	4751.9999822974	Sum of GTIs [s]
			ontime8	4748.7591516078	Sum of GTIs [s]
			l1events	225758	Number of level 1 events

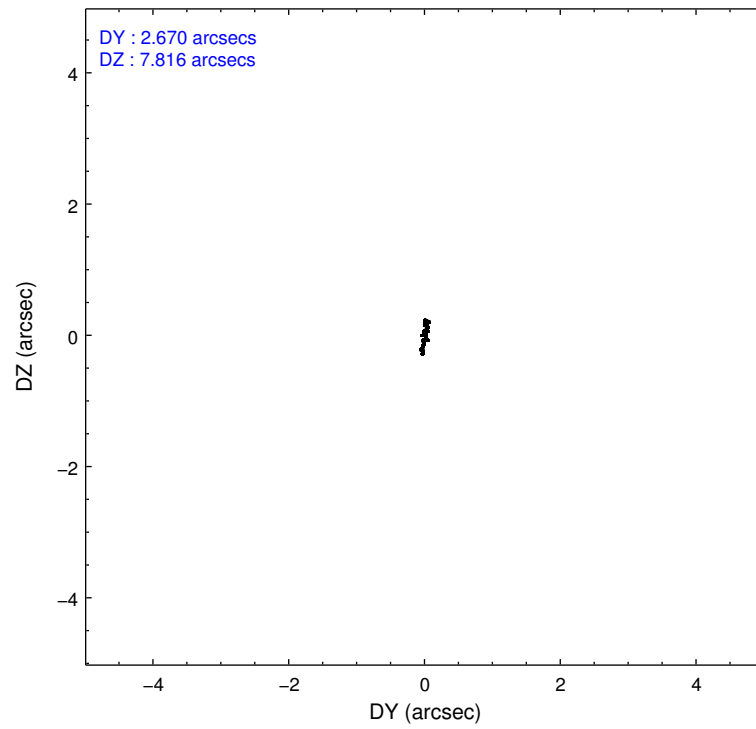
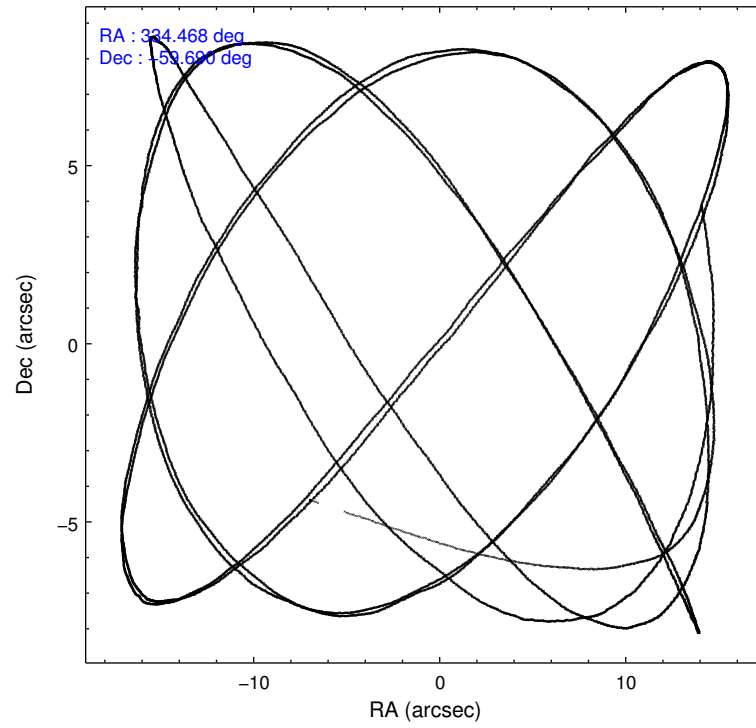
2.1.4 Events

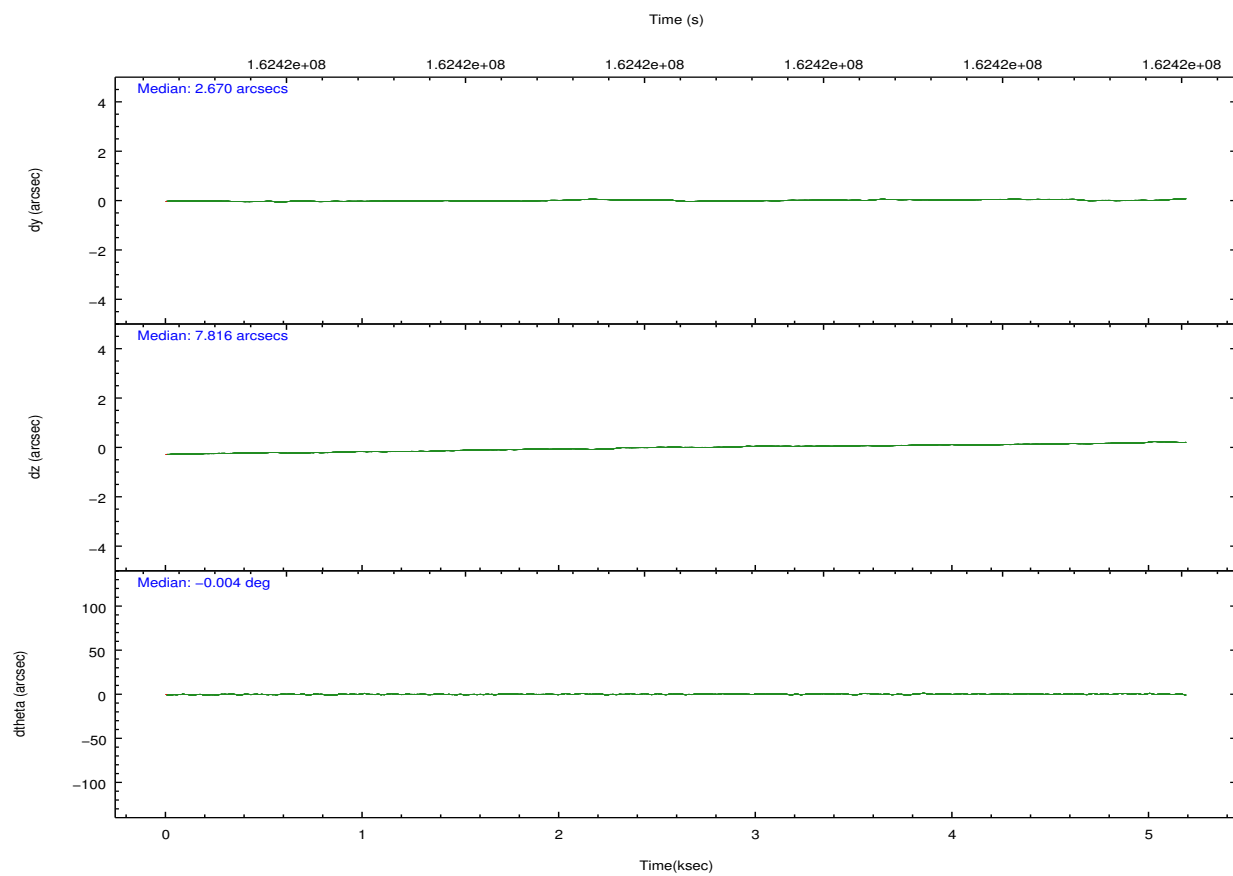
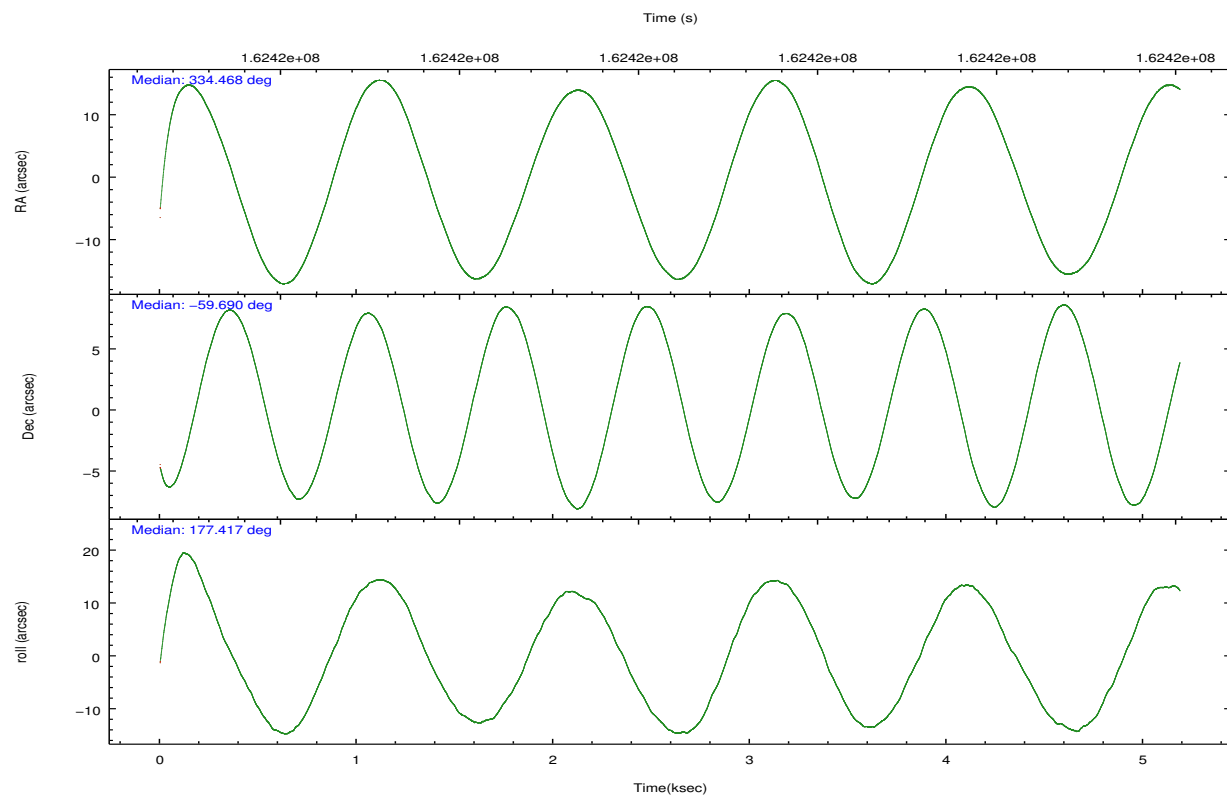
	ccd 2	ccd 3	ccd 5	ccd 6	ccd 7	ccd 8		ccd 2	ccd 3	ccd 5	ccd 6	ccd 7	ccd 8
level 1 events	30378	27856	52146	30719	44484	40175	grade 0 events	1609	1622	6179	1542	2489	2322
rejected events	26893	24336	24593	27096	23730	33011		5%	5%	11%	5%	5%	5%
rejected %	88%	87%	47%	88%	53%	82%	grade 1 events	23	15	425	13	90	35
								0%	0%	0%	0%	0%	0%
							grade 2 events	690	640	7235	664	4066	1505
								2%	2%	13%	2%	9%	3%
							grade 3 events	325	318	1096	360	1756	769
								1%	1%	2%	1%	3%	1%
							grade 4 events	304	348	1136	365	1833	713
								1%	1%	2%	1%	4%	1%
							grade 5 events	1126	1261	3400	1413	3948	1656
								3%	4%	6%	4%	8%	4%
							grade 6 events	561	594	11940	700	10651	1864
								1%	2%	22%	2%	23%	4%
							grade 7 events	25740	23058	20735	25662	19651	31311
								84%	82%	39%	83%	44%	77%

2.2 Compared Parameters

Parameter	Planned	Actual	Parameter	Planned	Actual
Instrument	ACIS	ACIS	Obspar format version number	7	7
Detector	ACIS-235678	ACIS-235678	Obspar file type	PREDICTED	ACTUAL
Grating	NONE	NONE	Obspar update status	NONE	UPDATED
Data mode	FAINT	FAINT	Number of optional ACIS chips dropped	0	0
Observation mode	POINTING	POINTING	On-chip summing requested	N	N
[deg] Pointing RA	334.514679	334.4672825880521	Subarray requested	NONE	NONE
[deg] Pointing Dec	-59.676668	-59.68959347511742	Alternating exposures requested	N	N
[deg] Pointing Roll	177.309795	177.4254872534766	[s] Primary exposure time	0.000000	3.2
[mm] SIM focus pos	-0.684267	-0.6828225247311905			
[mm] SIM defocus	0	0.001444936568705701			
[mm] SIM translation stage pos	-190.132523	-190.145094680475			
[mm] SIM translation stage offset	0	0.01257209746719923			
[s] Observation start time (MET)	162417775.184000	162416523.47473			
Observation start date	2003-02-23T20:01:51	2003-02-23T19:42:03			
[s] Observation end time (MET)	162422775.184000	162423692.83753			
Observation end date	2003-02-23T21:25:11	2003-02-23T21:41:32			
Read mode	TIMED	TIMED			

2.3 Aspect



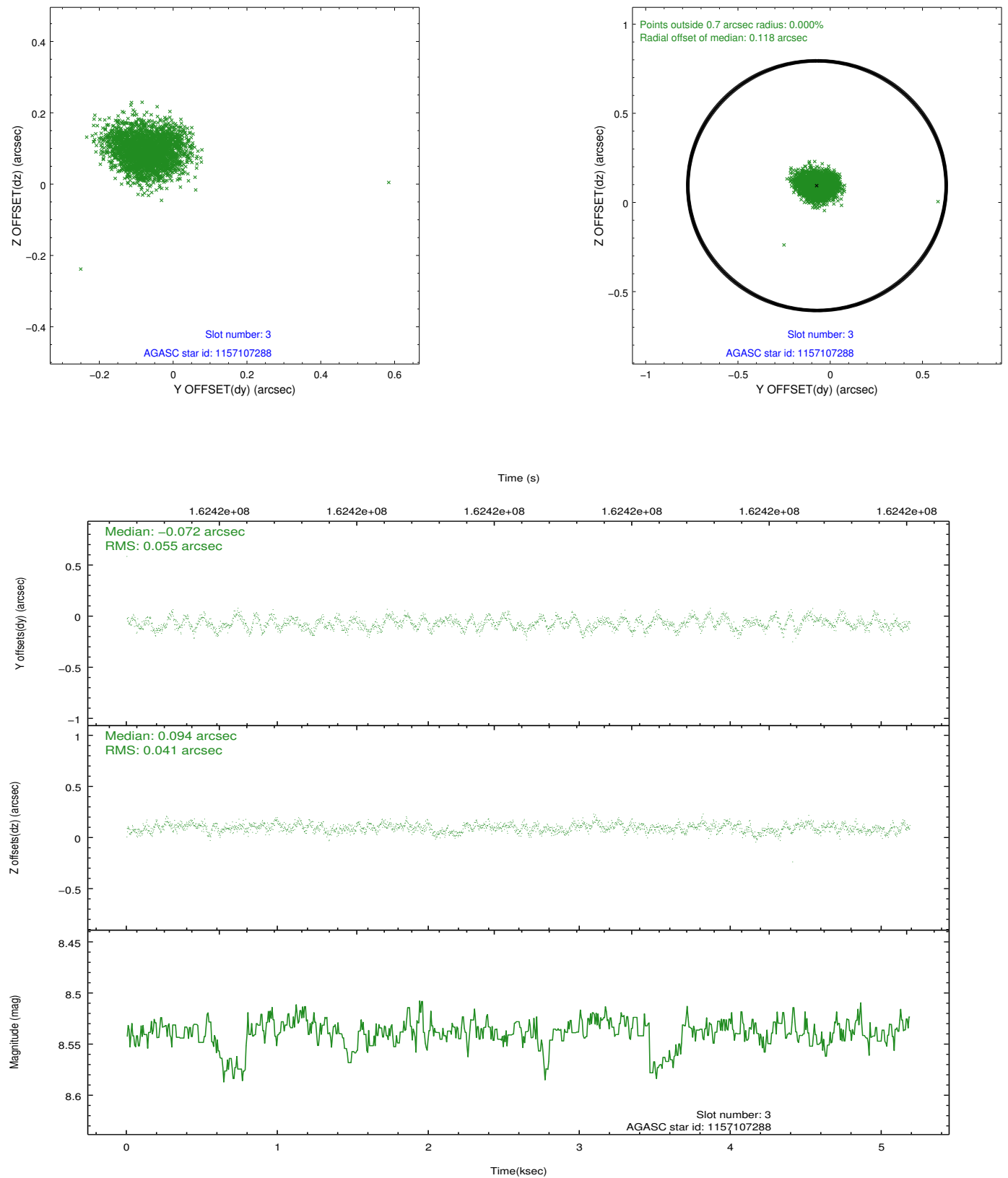


Slot Statistics

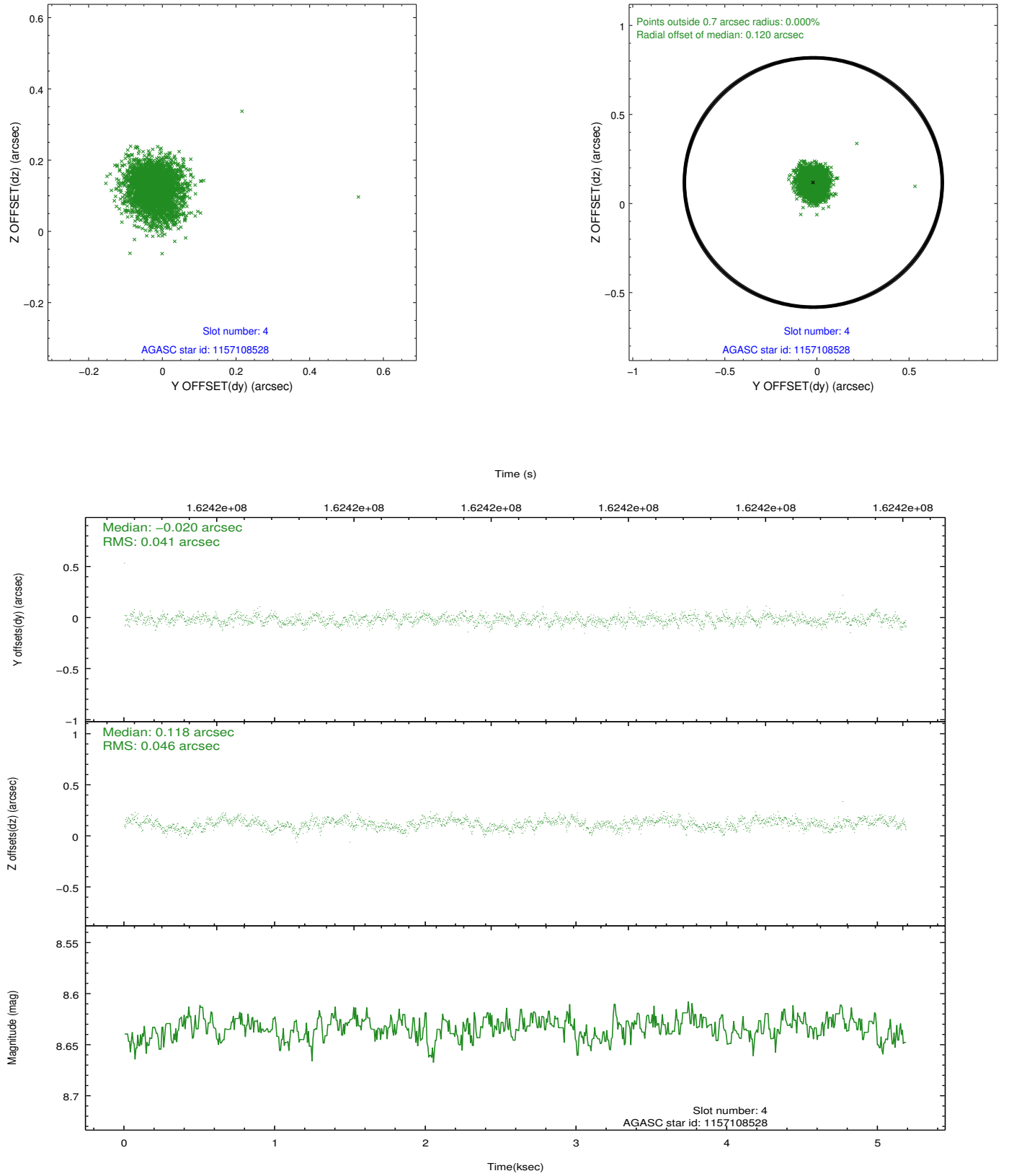
slot	status	id	mag	n_pts	med_dy	med_dz	dr1	dr2	ra	dec	mean_y	mean_z
0	FID	ACIS-S-2	7.11	1266	-0.017	-0.007	0.007	0.011	0.000000	0.000000	-755.33	-1728.88
1	FID	ACIS-S-4	7.20	1266	-0.015	0.010	0.005	0.010	0.000000	0.000000	2157.43	178.41
2	FID	ACIS-S-5	7.24	1266	0.001	0.006	0.007	0.012	0.000000	0.000000	-1806.64	173.41
3	GUIDE	1157107288	8.54	2531	-0.072	0.094	0.073	0.114	333.659459	-59.292192	1635.48	-1298.42
4	GUIDE	1157108528	8.63	2531	-0.020	0.118	0.066	0.104	333.520311	-59.494803	1846.40	-555.43
5	GUIDE	1194990528	9.25	2527	-0.159	-0.074	0.074	0.121	333.605757	-60.085376	1561.24	1557.36
6	GUIDE	1194995192	9.71	2530	0.243	-0.099	0.093	0.153	334.828298	-60.117765	-635.54	1561.50
7	GUIDE	1156187280	10.07	2450	0.007	-0.039	0.137	0.221	333.289722	-59.041074	2372.68	-2157.68

2.4 Star Slots

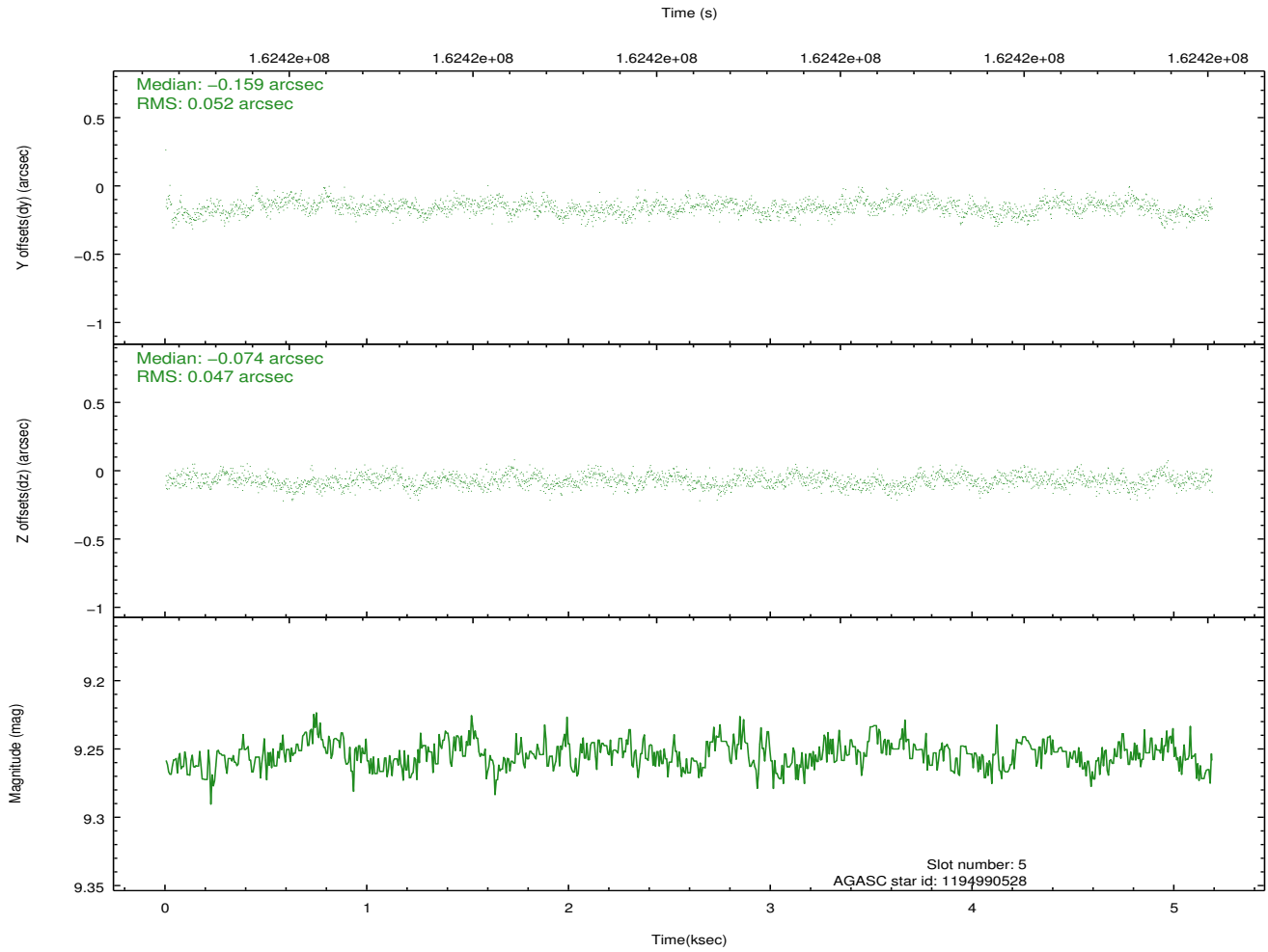
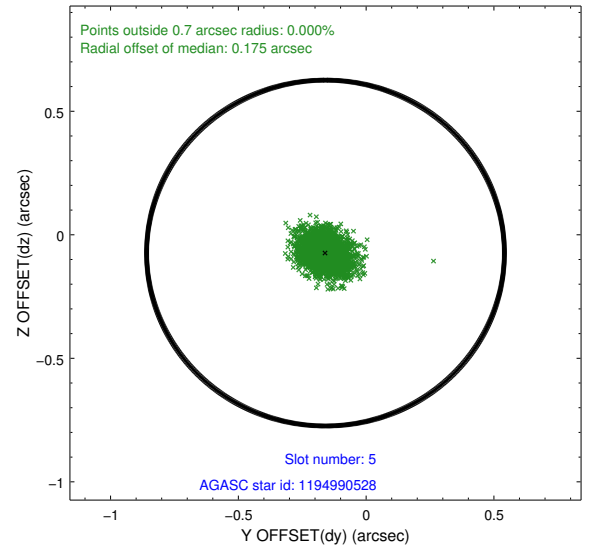
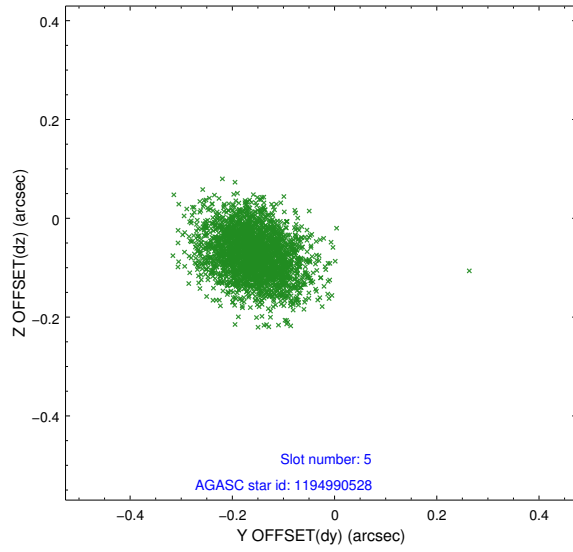
2.4.1 Slot 3



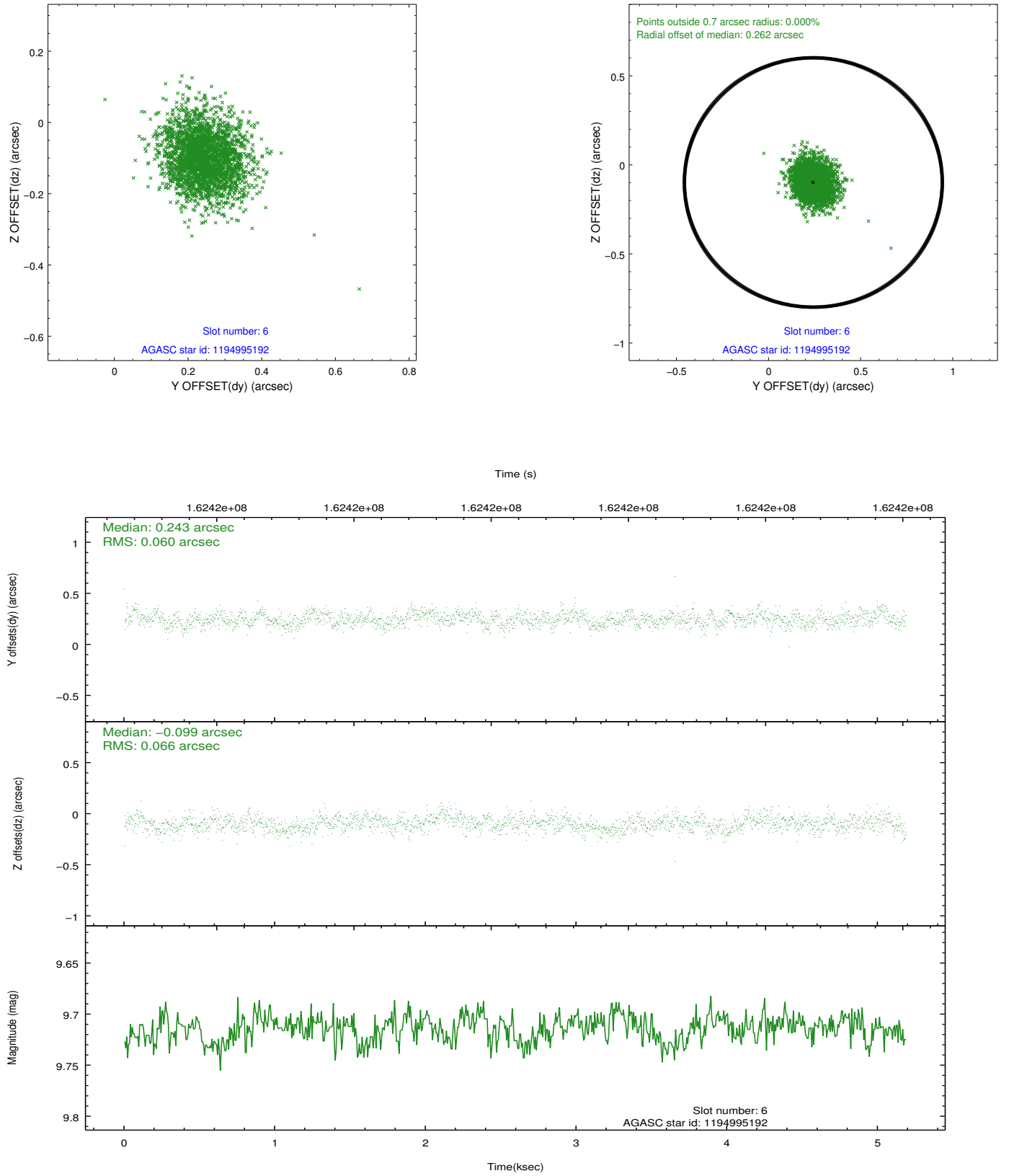
2.4.2 Slot 4



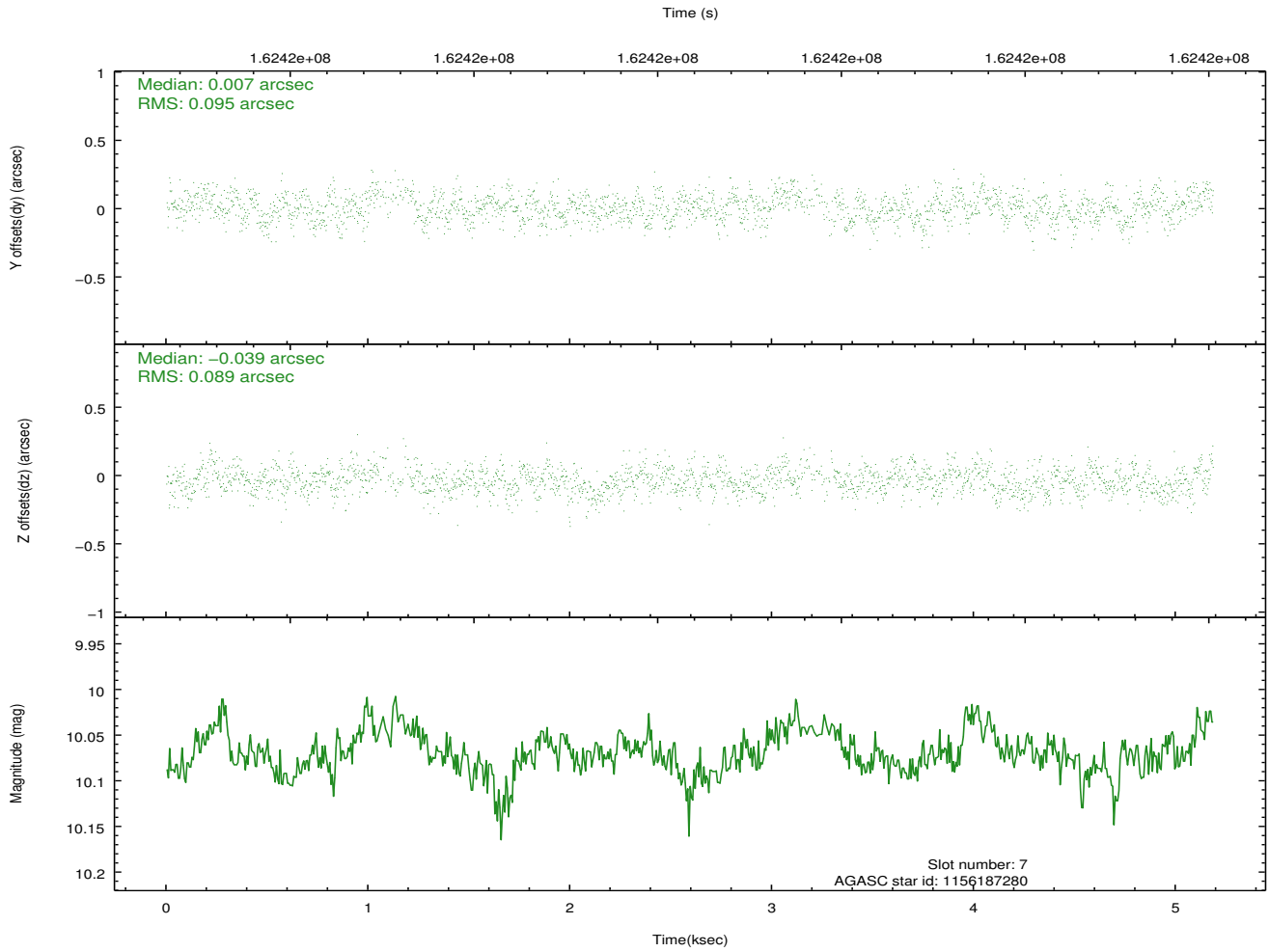
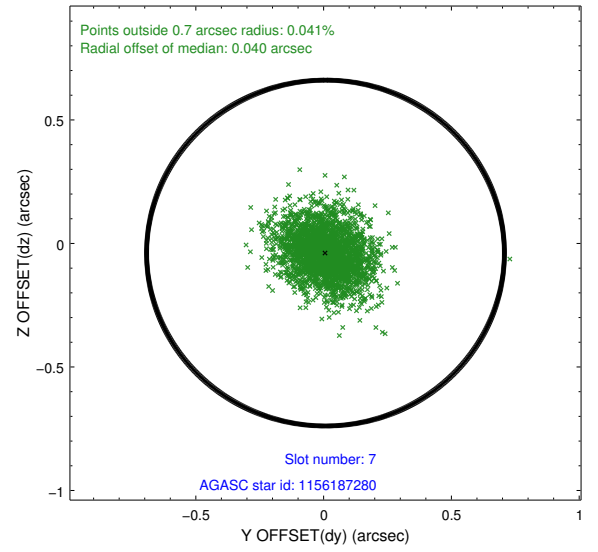
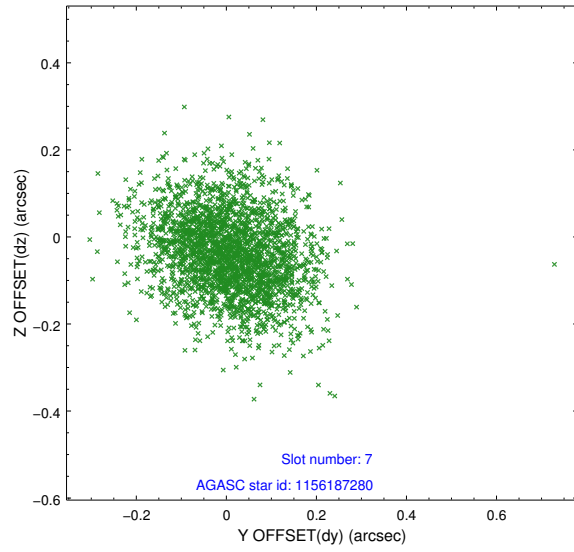
2.4.3 Slot 5



2.4.4 Slot 6

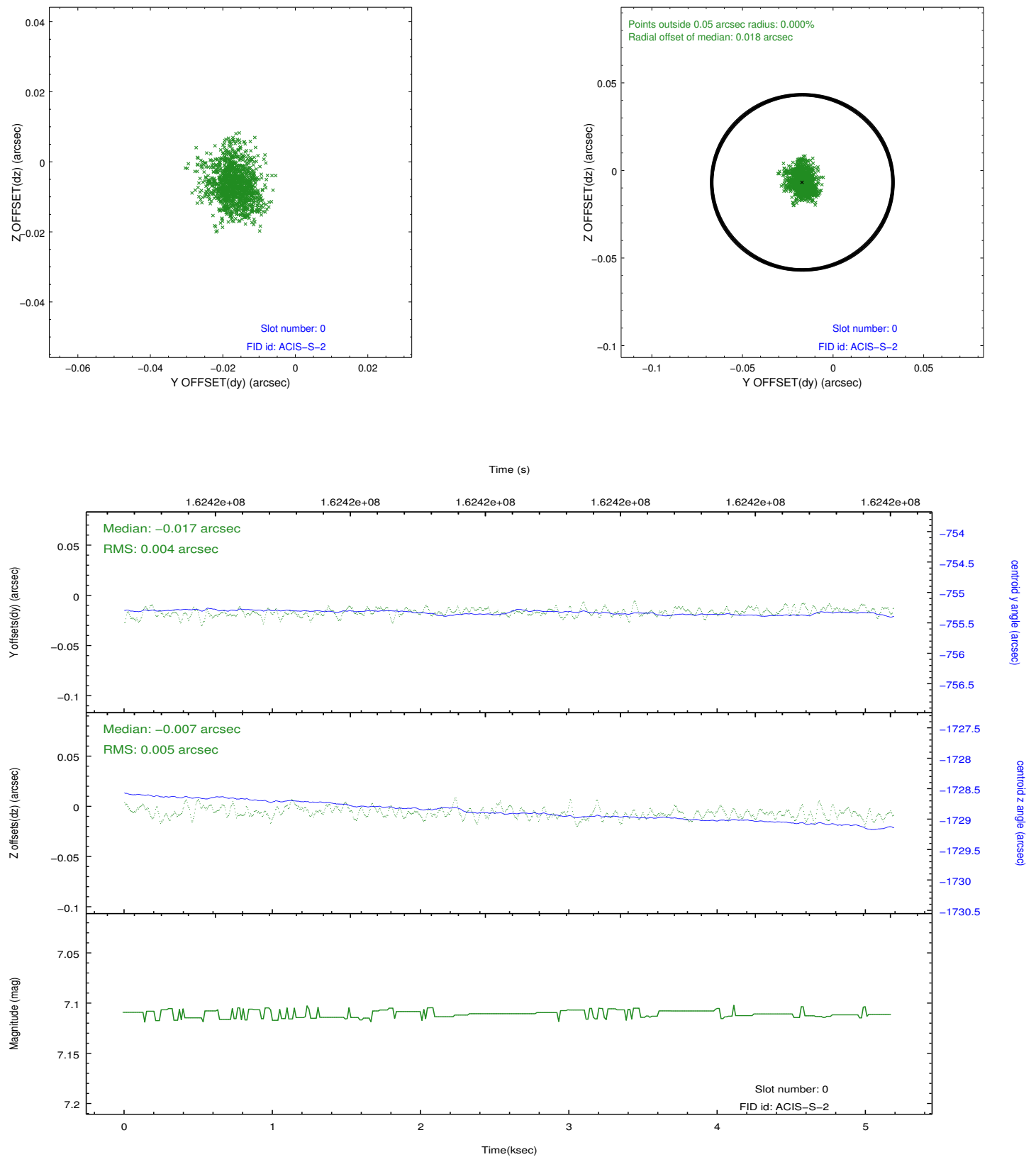


2.4.5 Slot 7

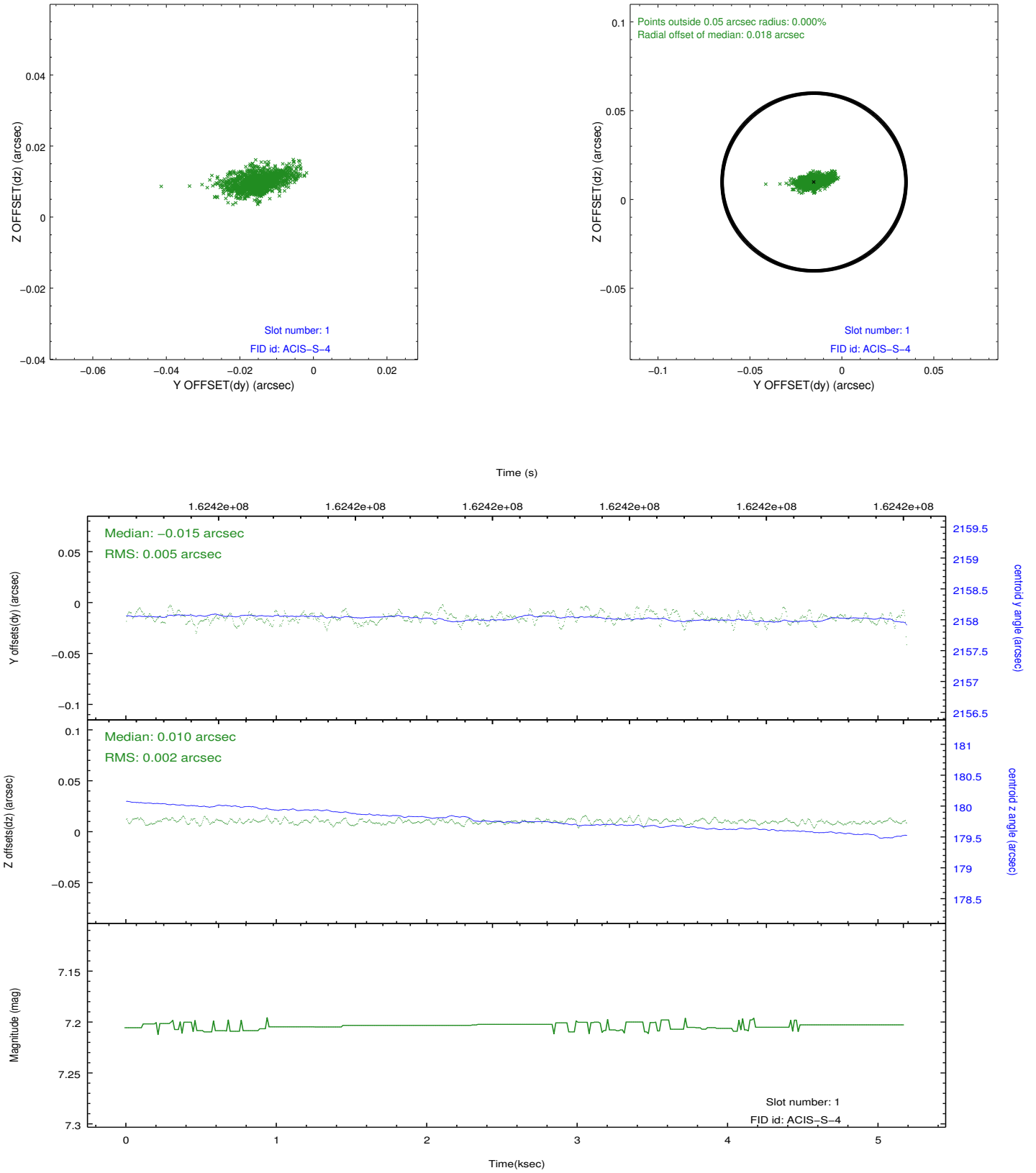


2.5 FID Slots

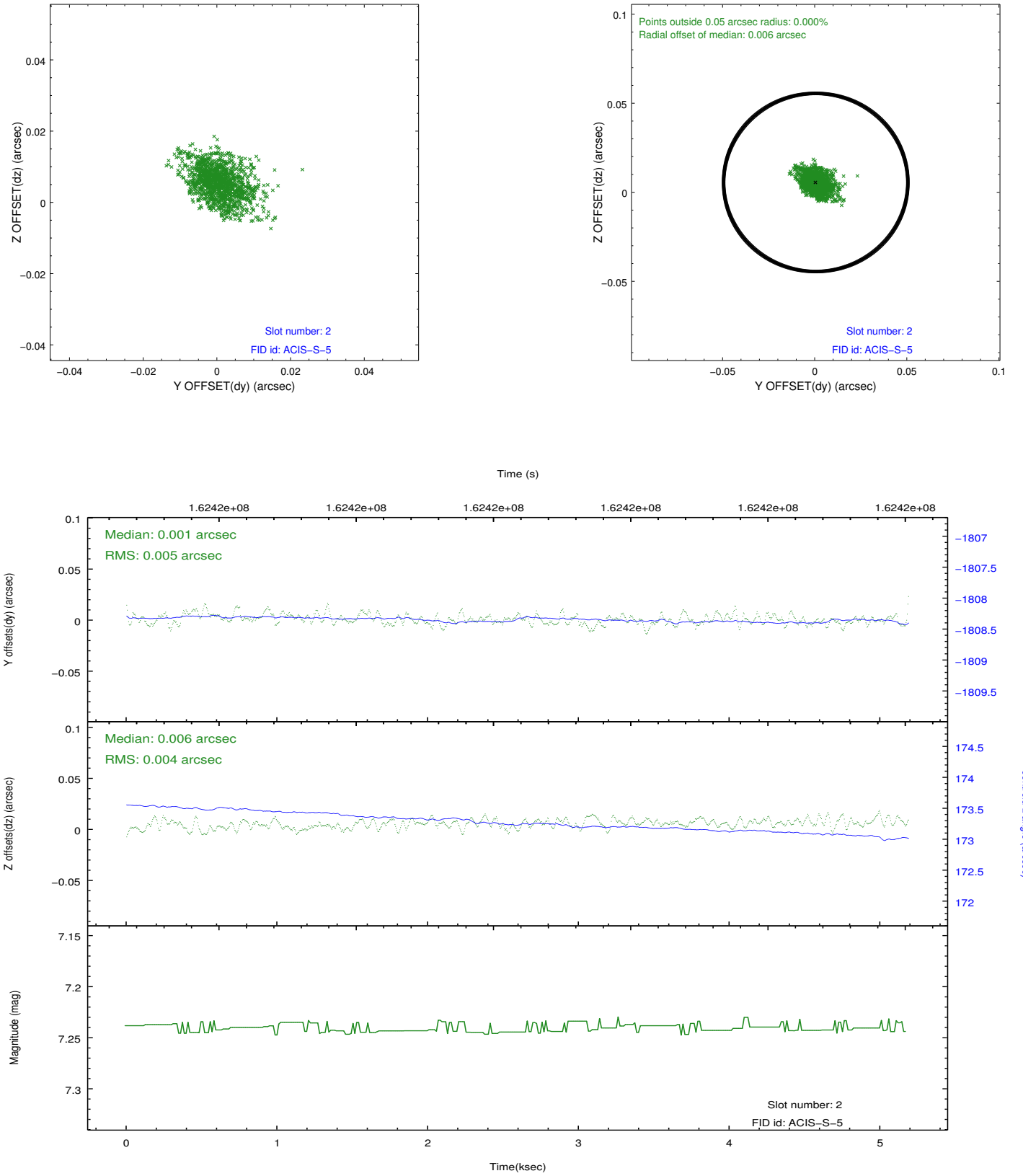
2.5.1 Slot 0



2.5.2 Slot 1



2.5.3 Slot 2



A Summary

A.1 Status

V&V Scientist	Jen Lauer
V&V Date (YYYY-MM-DD)	2012.11.07
V&V Edition	1
V&V Disposition and Status	OK
V&V Charge Time	4.755

A.2 Comments