

V&V Reference Report

L2 ASCDS Version : 7.6.8

Observation 3952 - L2 Version 001
Chandra X-Ray Center

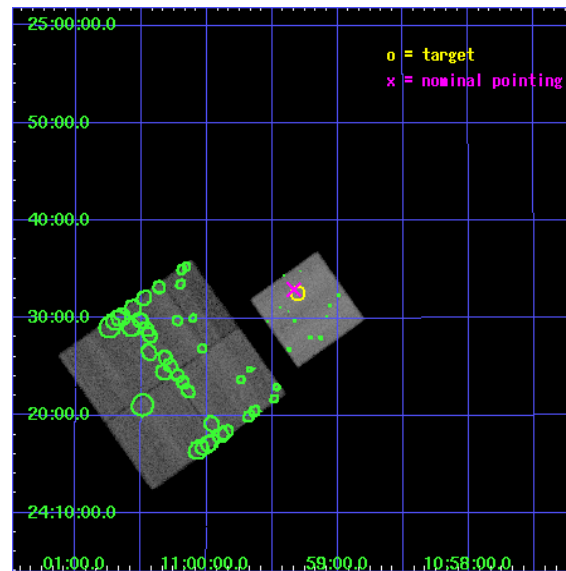
L2 Processing Date : Jun 29 2006

Contents

1	Front	2
2	OBI	3
2.1	OBI	3
2.1.1	Images	3
2.1.2	Bias	3
2.1.3	Parameters	4
2.1.4	Events	4
2.2	Compared Parameters	5
2.3	Aspect	6
2.4	Star Slots	9
2.4.1	Slot 3	9
2.4.2	Slot 4	10
2.4.3	Slot 5	11
2.4.4	Slot 6	12
2.4.5	Slot 7	13
2.5	FID Slots	14
2.5.1	Slot 0	14
2.5.2	Slot 1	15
2.5.3	Slot 2	16
3	Point Sources	17
A	Summary	18
A.1	Status	18
A.2	Comments	18

1 Front

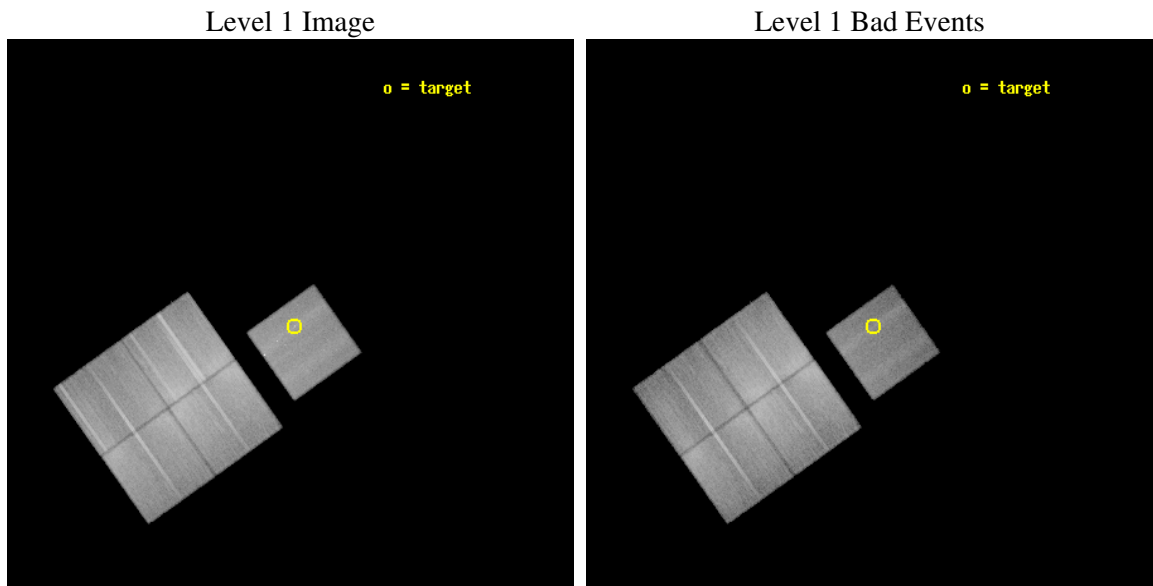
seq_num	600326
obs_id	3952
title	DO ULIG'S DRIVE HOT GALACTIC WINDS?
observer	Dr. Crystal Martin
object	IRAS10565+2448
dtcycle	0
cycle	P
ra_targ	164.826042
dec_targ	24.542583
ra_nom	164.83361609036
dec_nom	24.549369161107
roll_nom	54.571809766768
revision	2
ontime	29254.699943751
livetime	28872.465751989
ontime0	29254.699943751
ontime1	29254.699943751
ontime2	29254.699943751
ontime3	29251.558983535
ontime7	29254.699943751
l2events	309525



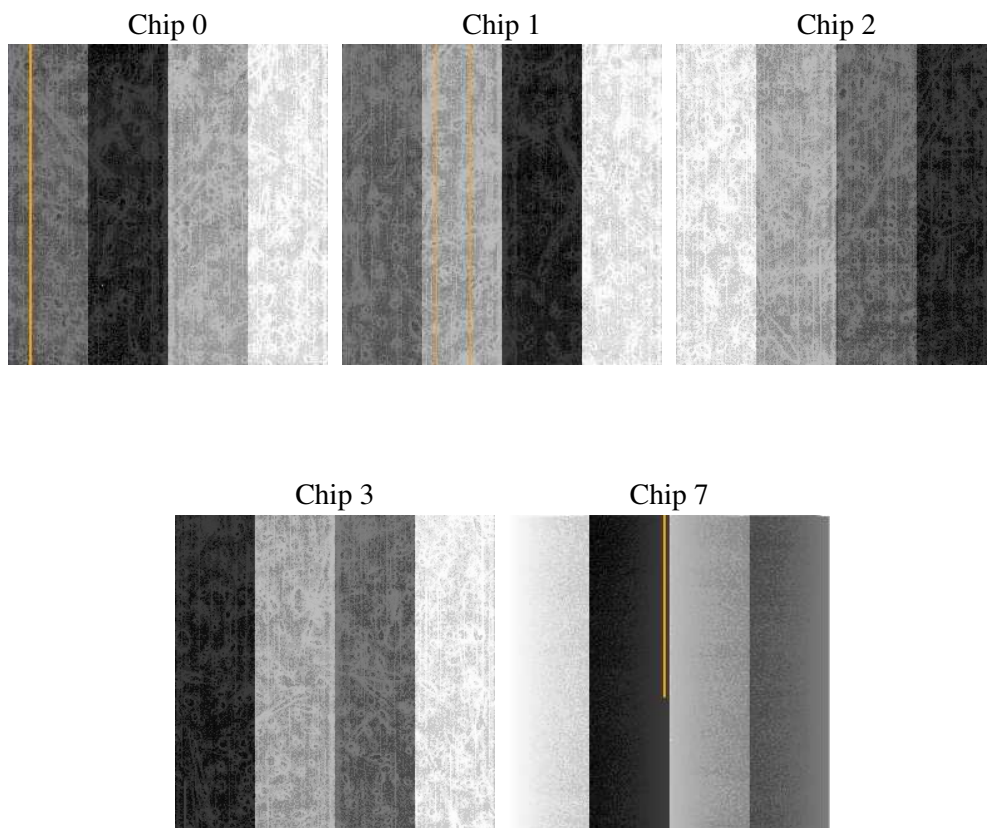
2 OBI

2.1 OBI

2.1.1 Images



2.1.2 Bias



2.1.3 Parameters

obi_num	0
ascdsver	7.6.8
caldsver	3.2.2
date	2006-06-29T13:56:06
revision	2

sched_exp_time	29090.000000
ontime	30470.849860758
ontime0	30470.849860758
ontime1	30470.849860758
ontime2	30470.84984085
ontime3	30467.708880633
ontime7	30470.849860758
l1events	1887430

2.1.4 Events

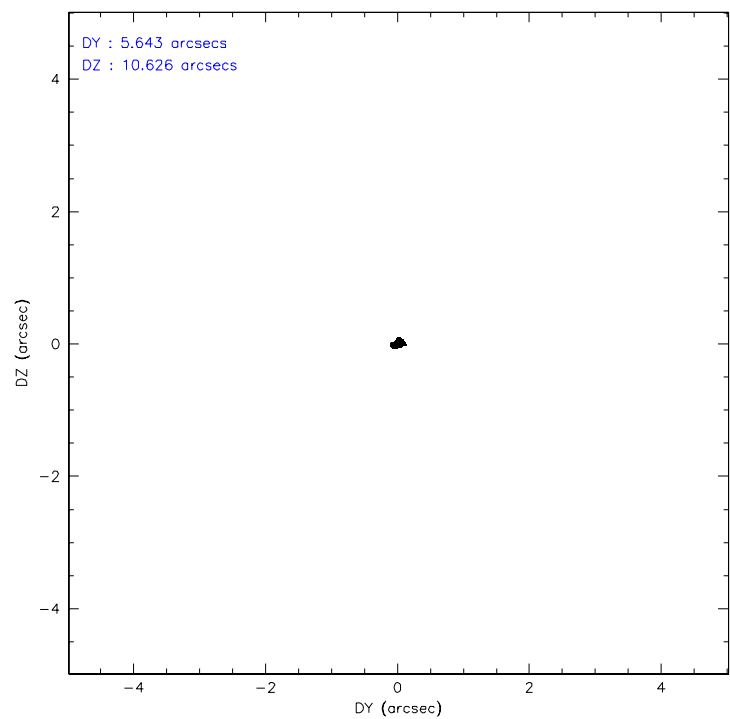
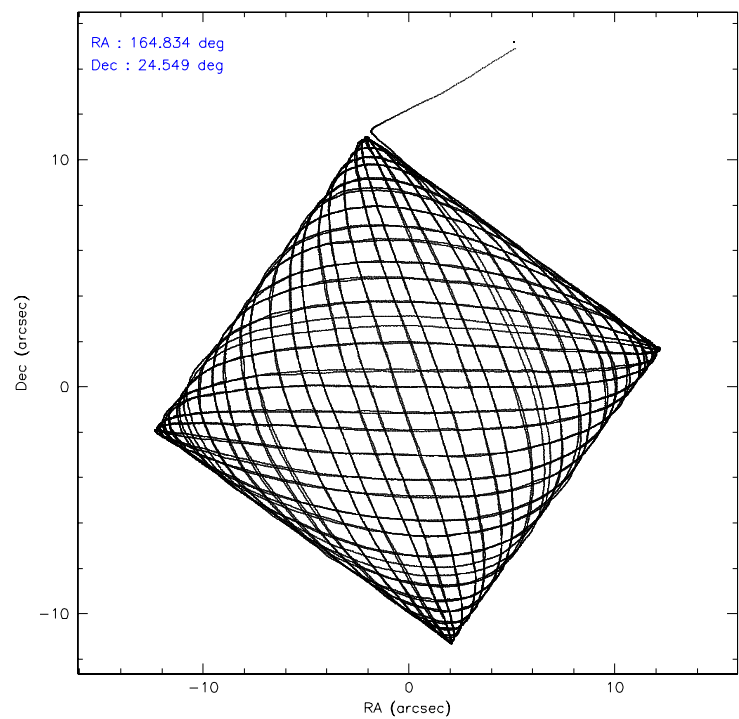
	ccd 0	ccd 1	ccd 2	ccd 3	ccd 7
level 1 events	333183	354994	471770	418263	309220
rejected events	261268	297766	382075	361493	185604
rejected %	78%	83%	80%	86%	60%

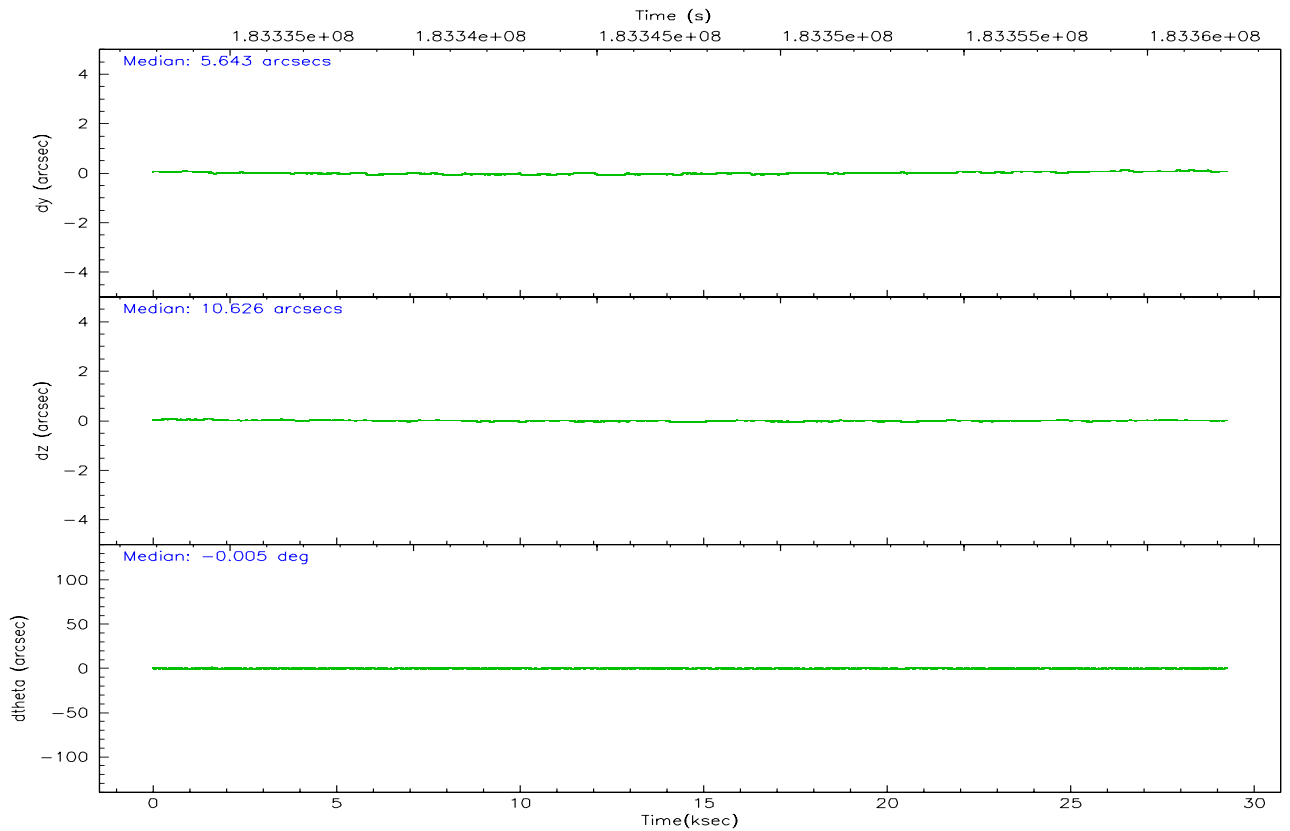
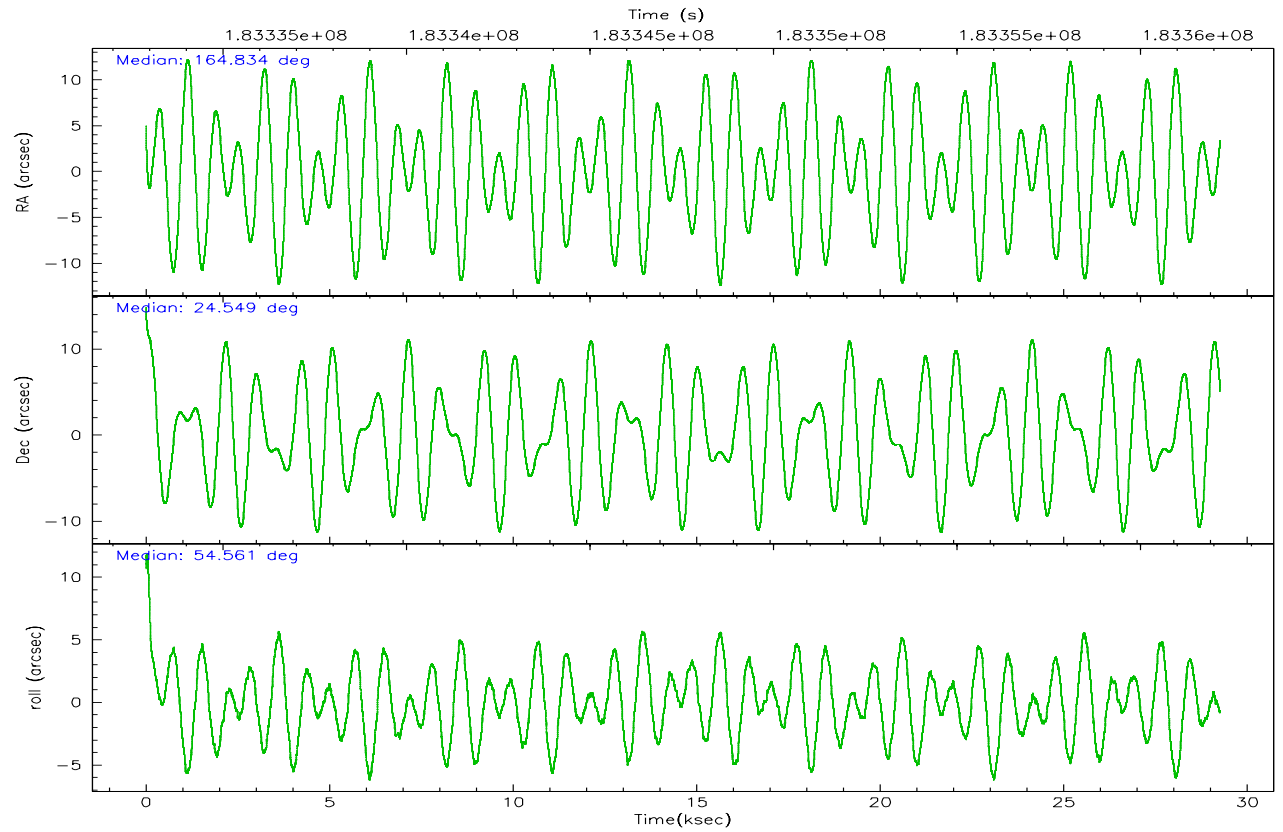
	ccd 0	ccd 1	ccd 2	ccd 3	ccd 7
grade 0 events	29014	17529	39990	18150	11264
	8%	4%	8%	4%	3%
grade 1 events	263	163	430	194	580
	0%	0%	0%	0%	0%
grade 2 events	24783	20473	27078	17945	37383
	7%	5%	5%	4%	12%
grade 3 events	2732	3086	2491	2573	8929
	0%	0%	0%	0%	2%
grade 4 events	3035	2811	7251	3140	8842
	0%	0%	1%	0%	2%
grade 5 events	7673	7953	7936	8331	19322
	2%	2%	1%	1%	6%
grade 6 events	14627	15175	15759	16751	61851
	4%	4%	3%	4%	20%
grade 7 events	251056	287804	370835	351179	161049
	75%	81%	78%	83%	52%

2.2 Compared Parameters

Parameter	Planned	Actual	Parameter	Planned	Actual
Instrument	ACIS	ACIS	Obspar format version number	6	6
Detector	ACIS-01237	ACIS-01237	Obspar file type	PREDICTED	ACTUAL
Grating	NONE	NONE	Obspar update status	NONE	UPDATED
Data mode	FAINT	FAINT	On-chip summing requested	N	N
Observation mode	POINTING	POINTING	Subarray requested	NONE	NONE
Pointing RA	164.831194	164.8336160903581	Alternating exposures requested	N	N
Pointing Dec	24.522215	24.54936916110714	Primary exposure time	0.000000	3.1
Pointing Roll	54.416187	54.57180976676831			
SIM focus pos (mm)	-0.684267	-0.6828225247311905			
SIM defocus (mm)	0	0.001444936568705701			
SIM translation stage pos (mm)	-190.132523	-190.1400660498719			
SIM translation stage offset (mm)	0	0.00754346686406393			
Observation start time	183333069.184000	183331468.45165			
Observation start date	2003-10-23T21:50:05	2003-10-23T21:24:28			
Observation end time	183362159.184000	183363112.25301			
Observation end date	2003-10-24T05:54:55	2003-10-24T06:11:52			
Read mode	TIMED	TIMED			

2.3 Aspect



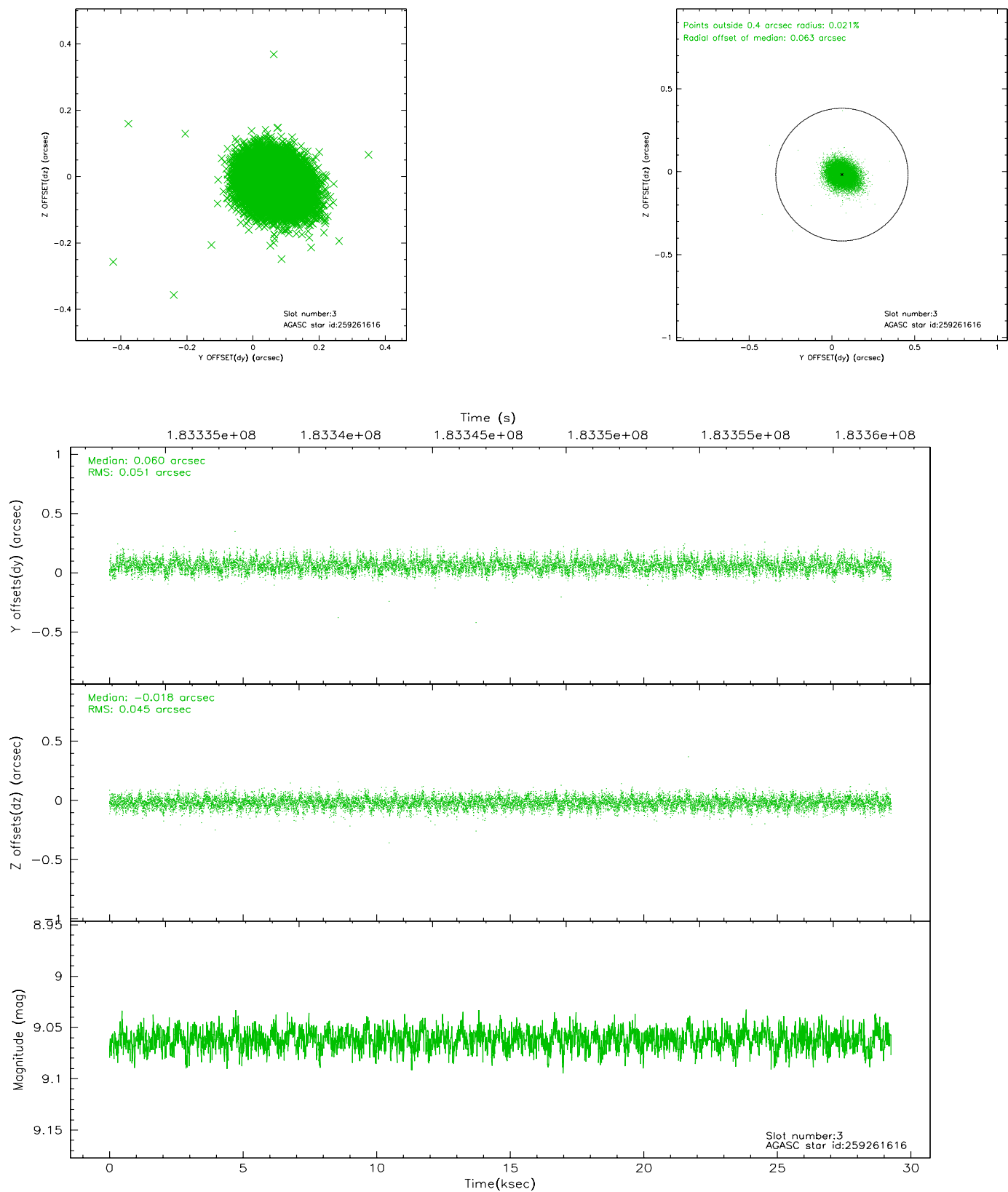


Slot Statistics

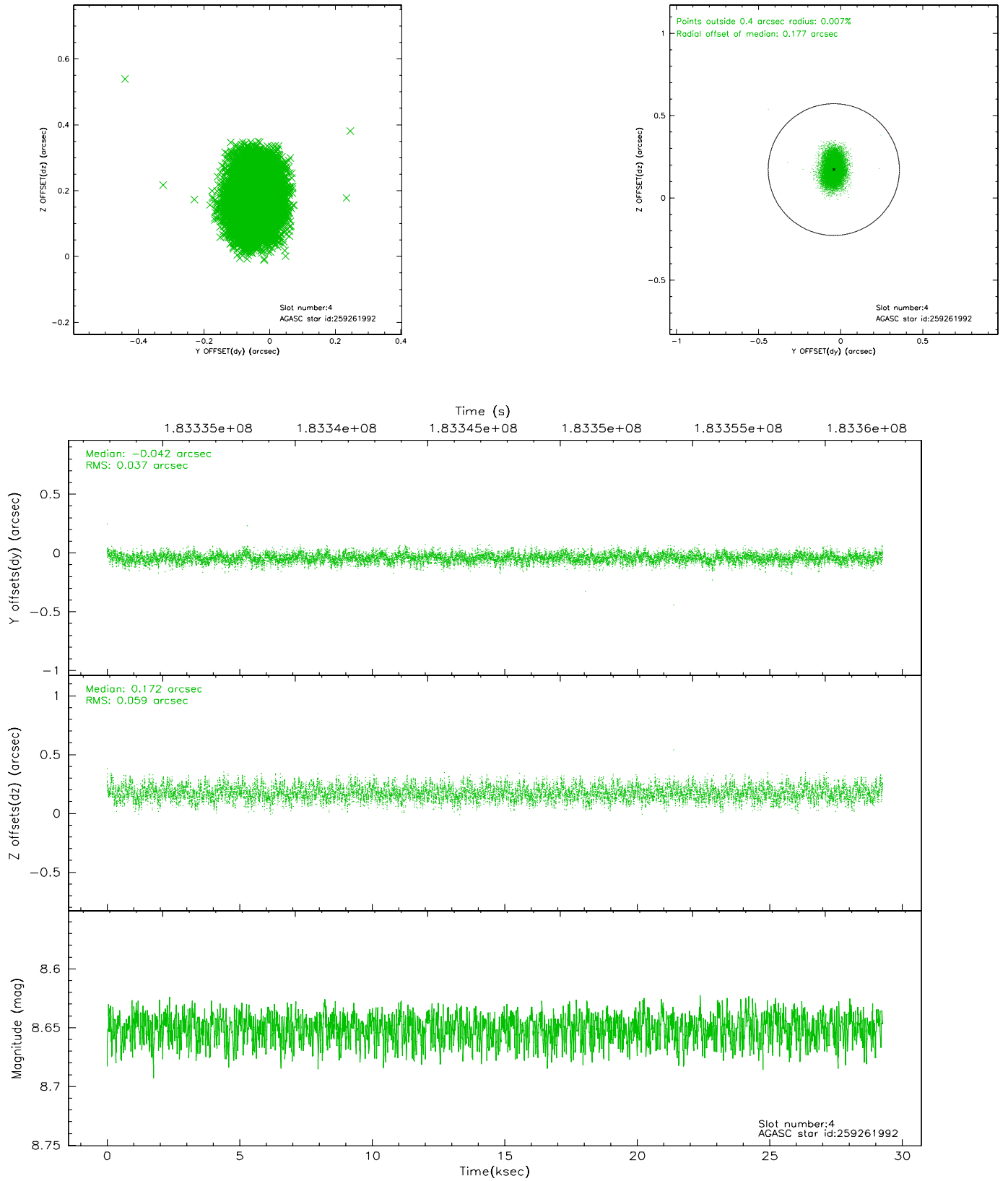
slot	status	id	mag	n_pts	med_dy	med_dz	dr1	dr2	ra	dec	mean_y	mean_z
0	FID	ACIS-S-2	7.10	7137	-0.057	-0.001	0.006	0.010	0.000000	0.000000	-758.39	-1731.90
1	FID	ACIS-S-4	7.20	7136	0.051	0.028	0.005	0.009	0.000000	0.000000	2154.93	176.57
2	FID	ACIS-S-5	7.23	7137	-0.025	-0.018	0.006	0.010	0.000000	0.000000	-1811.13	170.23
3	GUIDE	259261616	9.06	14265	0.060	-0.018	0.071	0.116	164.369358	24.419573	-1179.64	1017.68
4	GUIDE	259261992	8.65	14274	-0.042	0.172	0.074	0.121	165.245943	24.065554	-542.14	-2064.18
5	GUIDE	259262440	9.28	14272	-0.126	0.098	0.079	0.131	165.372489	24.457413	845.46	-1575.89
6	GUIDE	259263032	7.52	14275	-0.007	-0.113	0.056	0.085	164.537777	24.375499	-988.60	475.65
7	GUIDE	259271344	7.46	14274	0.112	-0.139	0.050	0.080	164.312970	24.142782	-2098.96	591.64

2.4 Star Slots

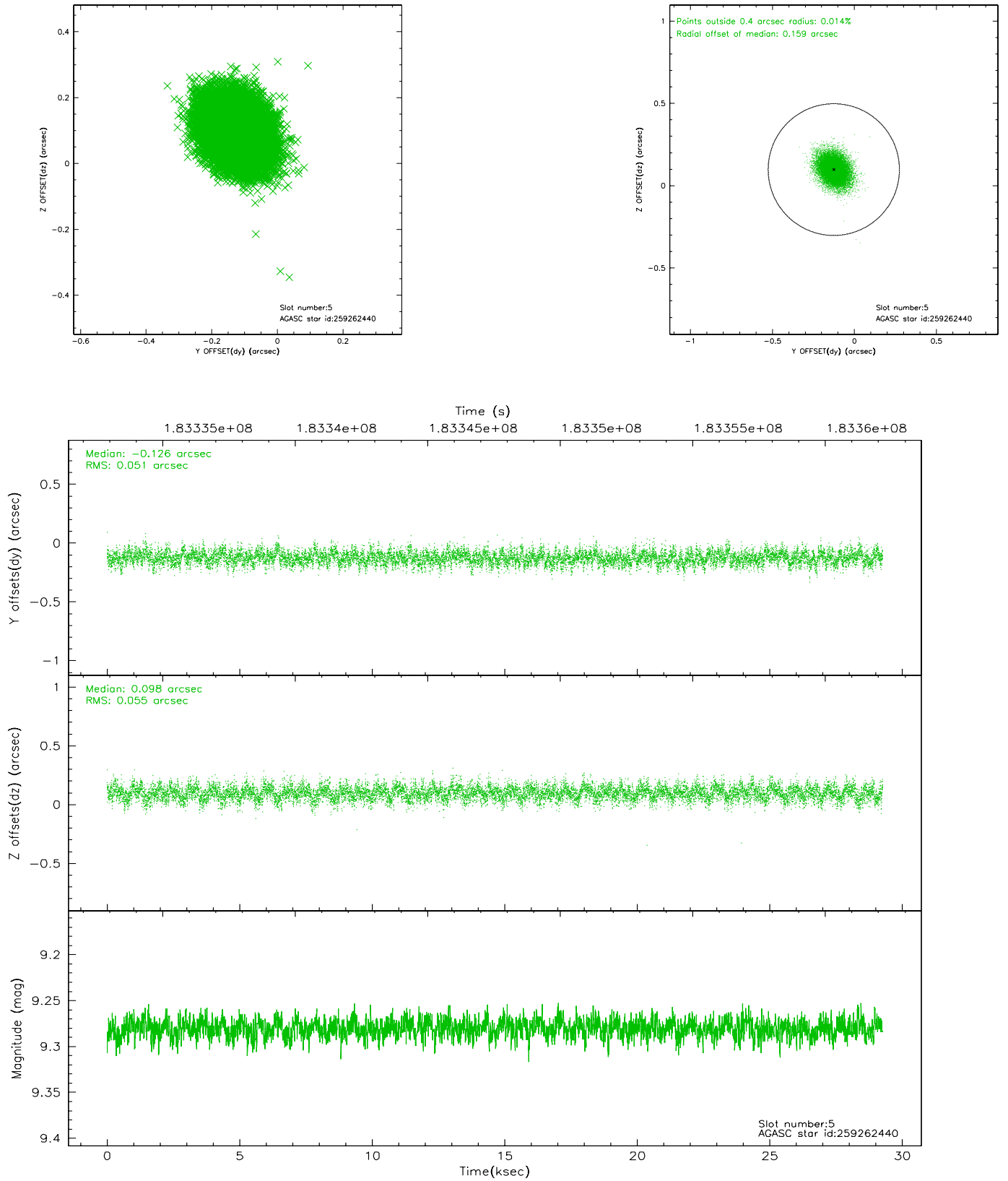
2.4.1 Slot 3



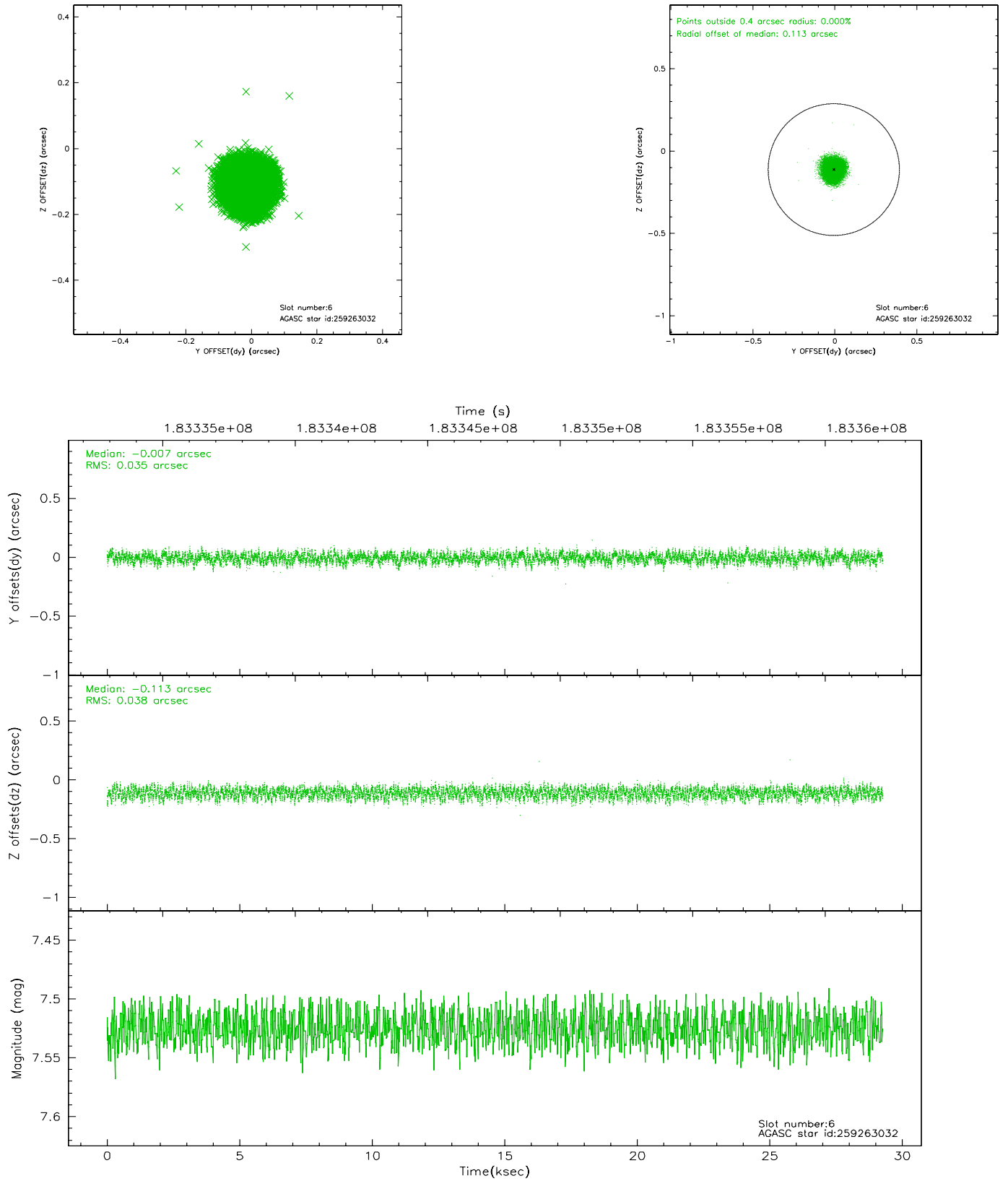
2.4.2 Slot 4



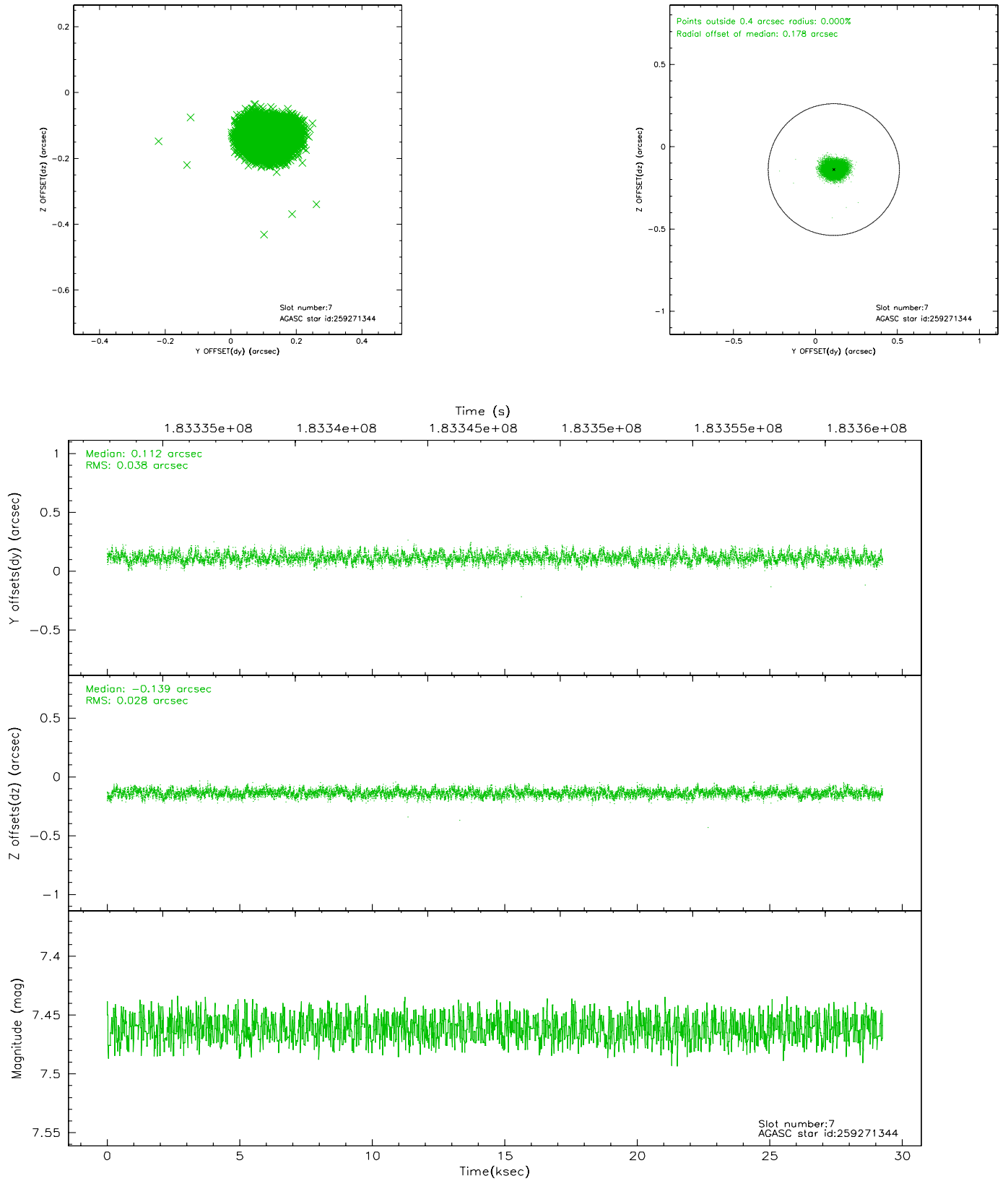
2.4.3 Slot 5



2.4.4 Slot 6

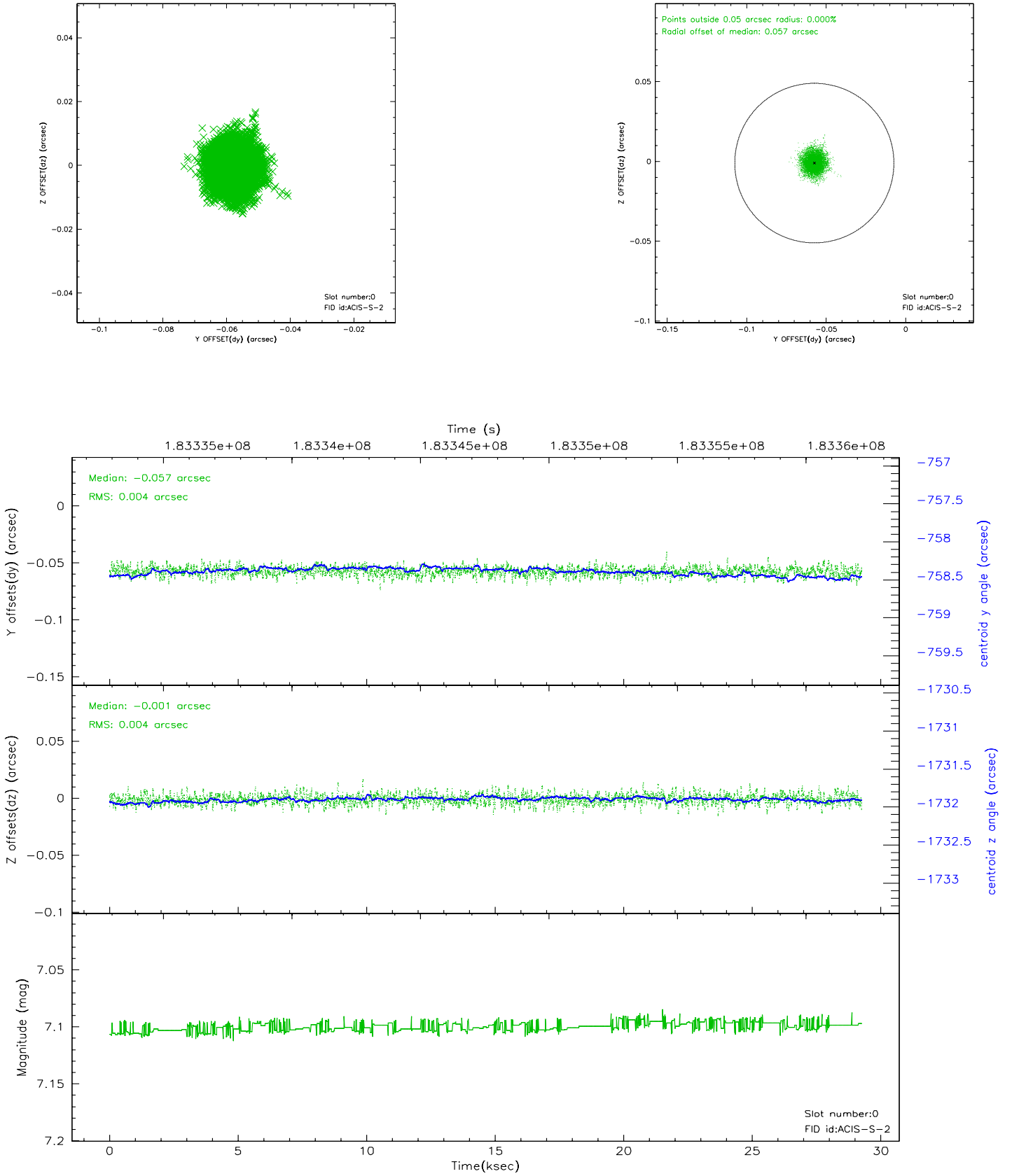


2.4.5 Slot 7

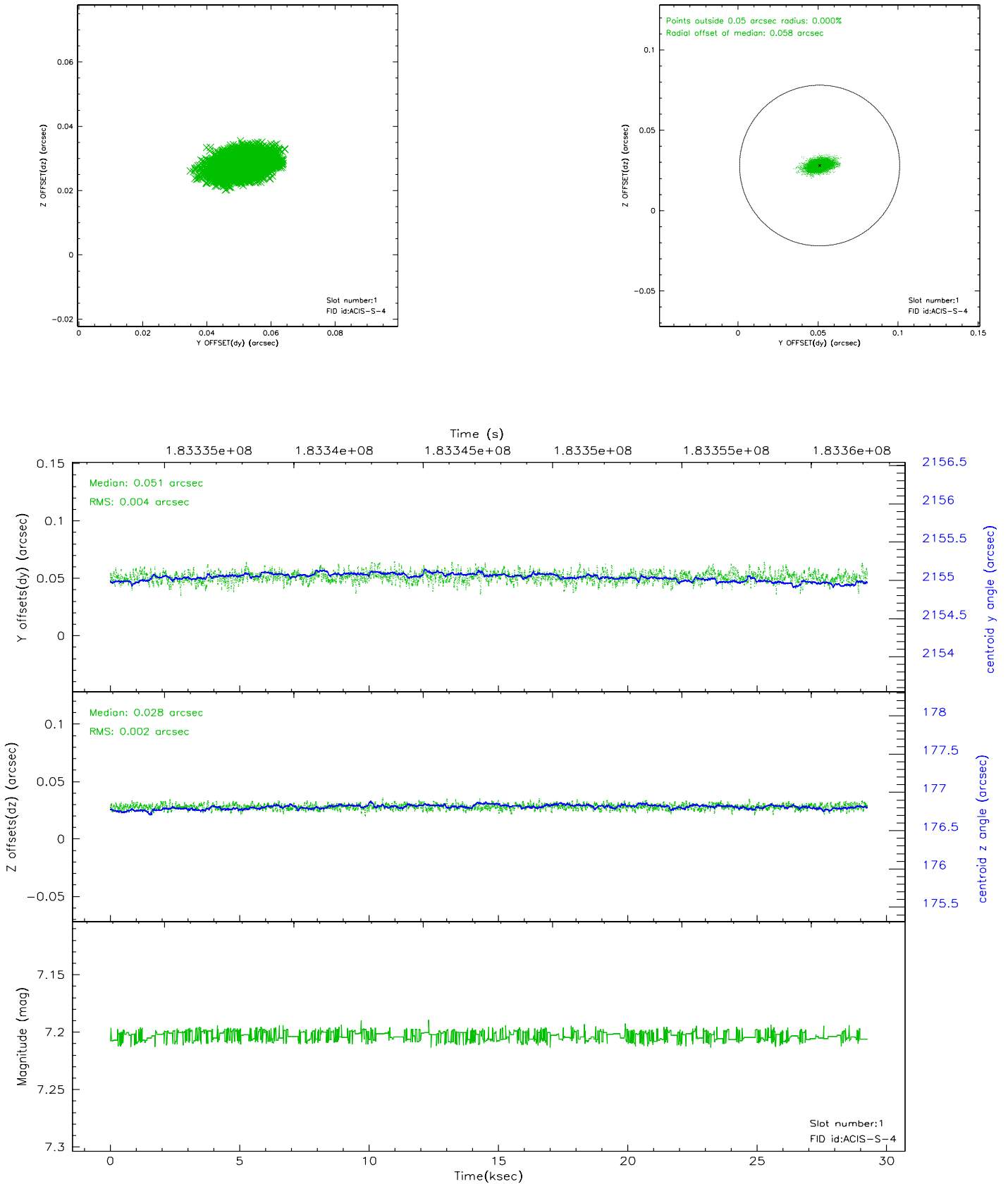


2.5 FID Slots

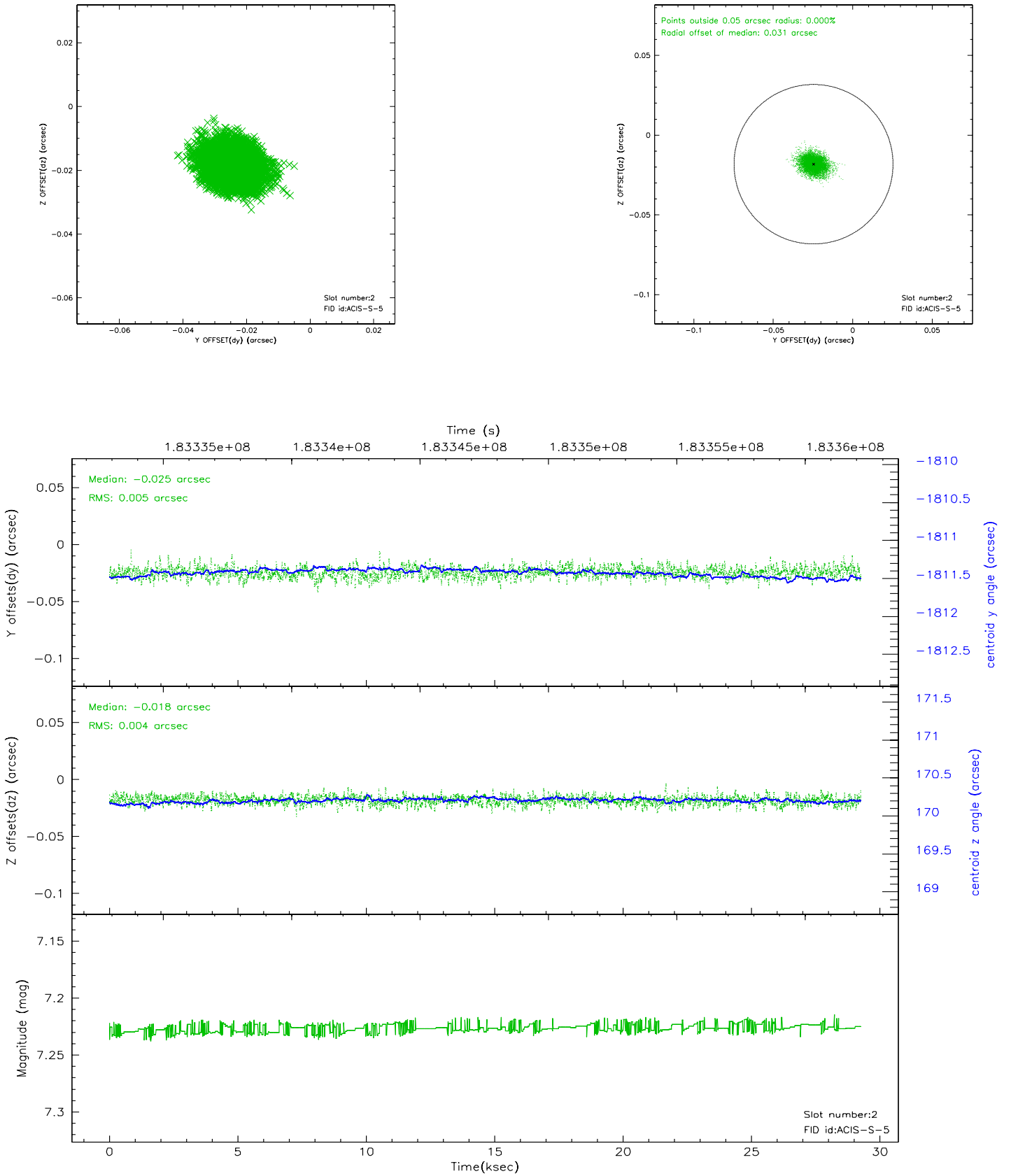
2.5.1 Slot 0



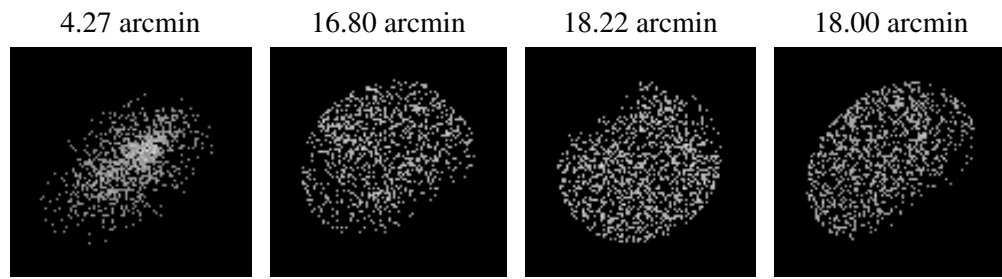
2.5.2 Slot 1



2.5.3 Slot 2



3 Point Sources



A Summary

A.1 Status

V&V Scientist	Beth Sundheim
V&V Date (YYYY-MM-DD)	2006.06.29
V&V Edition	1
V&V Disposition and Status	OK
V&V Charge Time	29.254

A.2 Comments