

V&V Reference Report

L2 ASCDS Version : 7.6.8

Observation 3950 - L2 Version 001
Chandra X-Ray Center

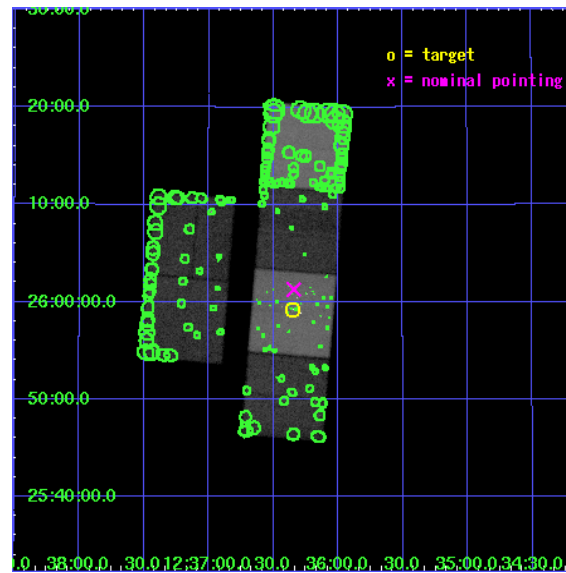
L2 Processing Date : Jul 21 2006

Contents

1	Front	2
2	OBI	3
2.1	OBI	3
2.1.1	Images	3
2.1.2	Bias	3
2.1.3	Parameters	4
2.1.4	Events	4
2.2	Compared Parameters	5
2.3	Aspect	6
2.4	Star Slots	9
2.4.1	Slot 3	9
2.4.2	Slot 4	10
2.4.3	Slot 5	11
2.4.4	Slot 6	12
2.4.5	Slot 7	13
2.5	FID Slots	14
2.5.1	Slot 0	14
2.5.2	Slot 1	15
2.5.3	Slot 2	16
3	Point Sources	17
A	Summary	18
A.1	Status	18
A.2	Comments	18

1 Front

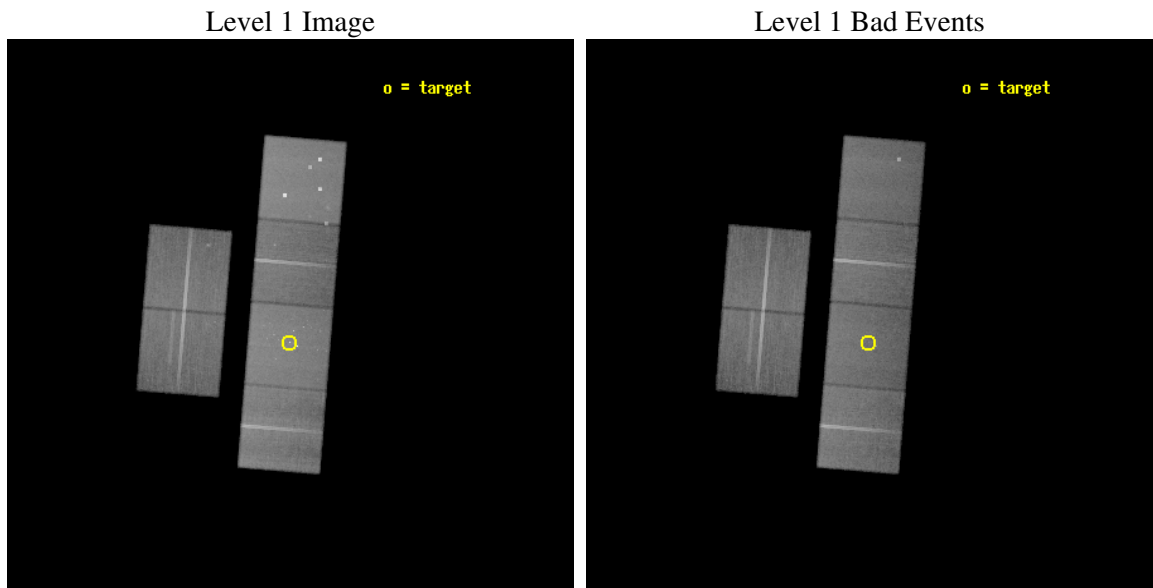
seq_num	600324
obs_id	3950
title	GALACTIC CORONA ALONG THE HUBBLE SEQUENCE
observer	Prof. Q. Daniel Wang
object	NGC 4565
dtcycle	0
cycle	P
ra_targ	189.086667
dec_targ	25.987778
ra_nom	189.08550711094
dec_nom	26.021816217036
roll_nom	94.715549825964
revision	2
ontime	59961.599776626
livetime	59202.329895713
ontime2	59955.117835969
ontime3	59945.394795626
ontime5	59958.358796358
ontime6	59958.35877645
ontime7	59961.599776626
ontime8	59955.113180935
l2events	641168



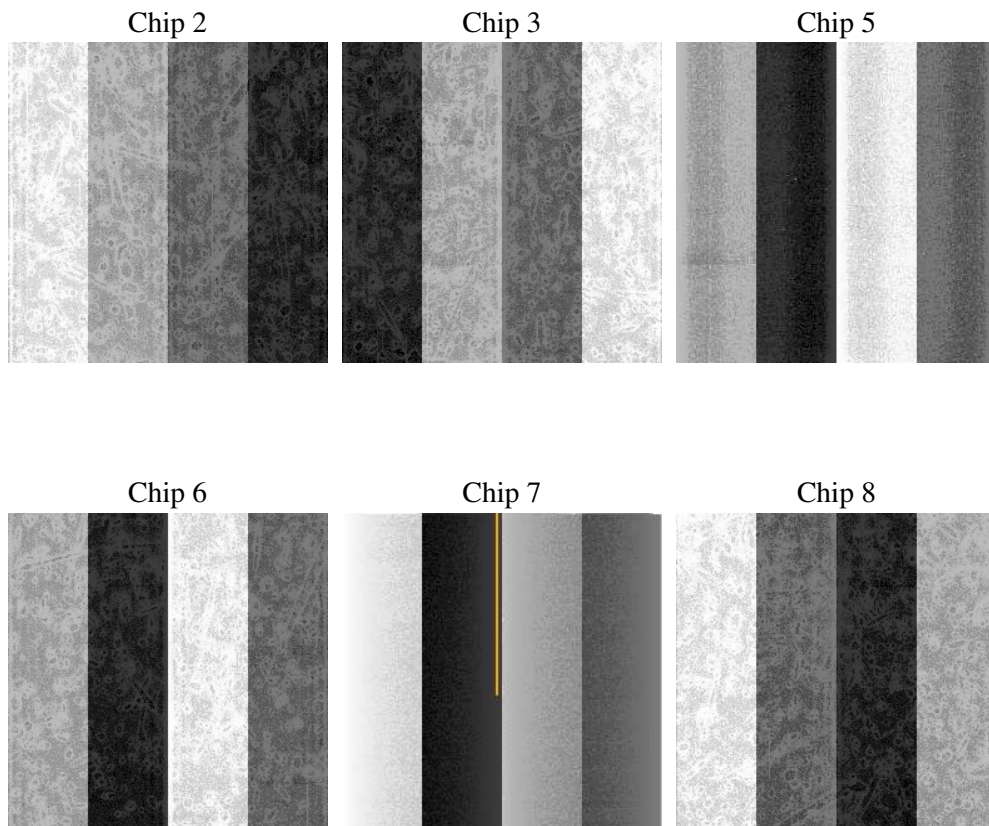
2 OBI

2.1 OBI

2.1.1 Images



2.1.2 Bias



2.1.3 Parameters

obi_num	0
ascdsver	7.6.8
caldsver	3.2.2
date	2006-07-21T02:21:15
revision	2

sched_exp_time	60000.000000
ontime	59965.138267994
ontime2	59958.656327337
ontime3	59948.933286995
ontime5	59961.897287726
ontime6	59961.897267818
ontime7	59965.138267994
ontime8	59958.656287551
l1events	2864890

2.1.4 Events

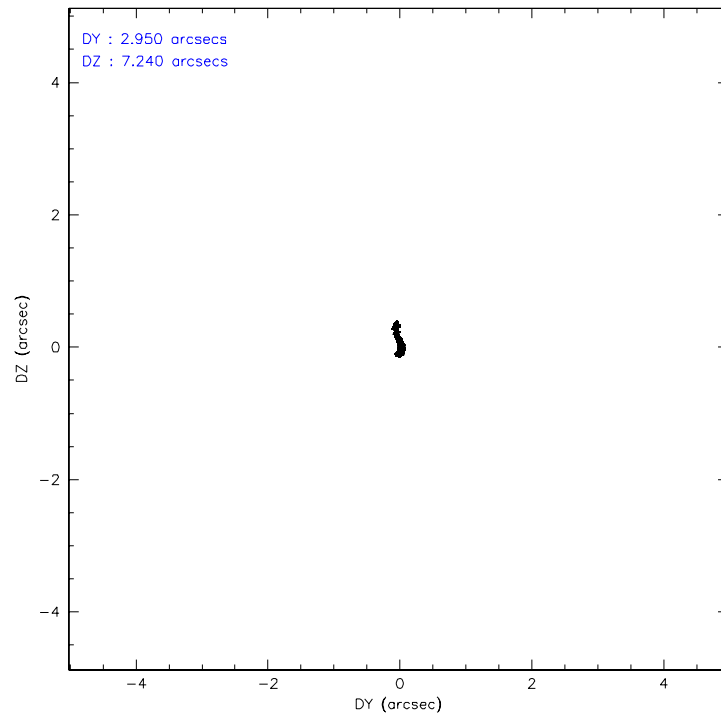
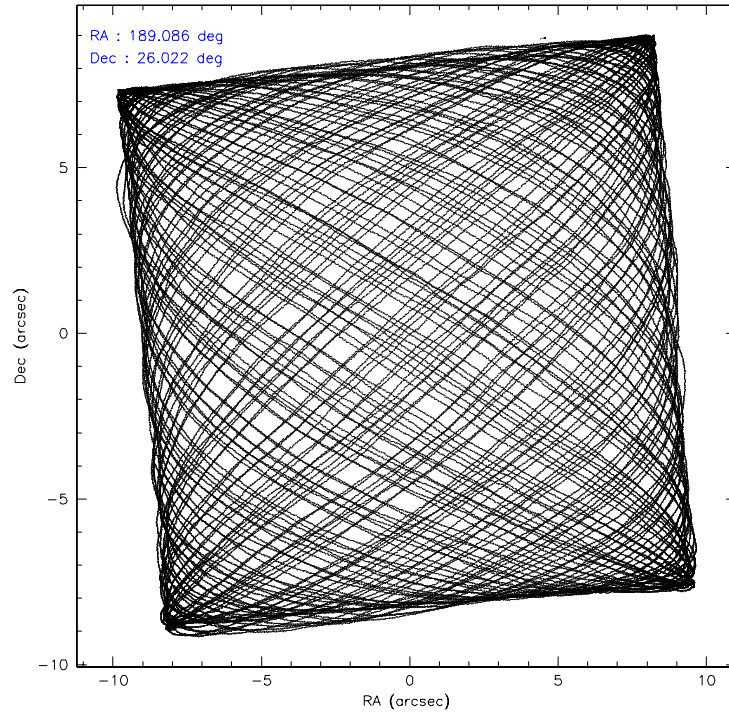
	ccd 2	ccd 3	ccd 5	ccd 6	ccd 7	ccd 8
level 1 events	409235	390002	612727	406143	545850	500933
rejected events	359606	341294	324054	355677	325685	394335
rejected %	87%	87%	52%	87%	59%	78%

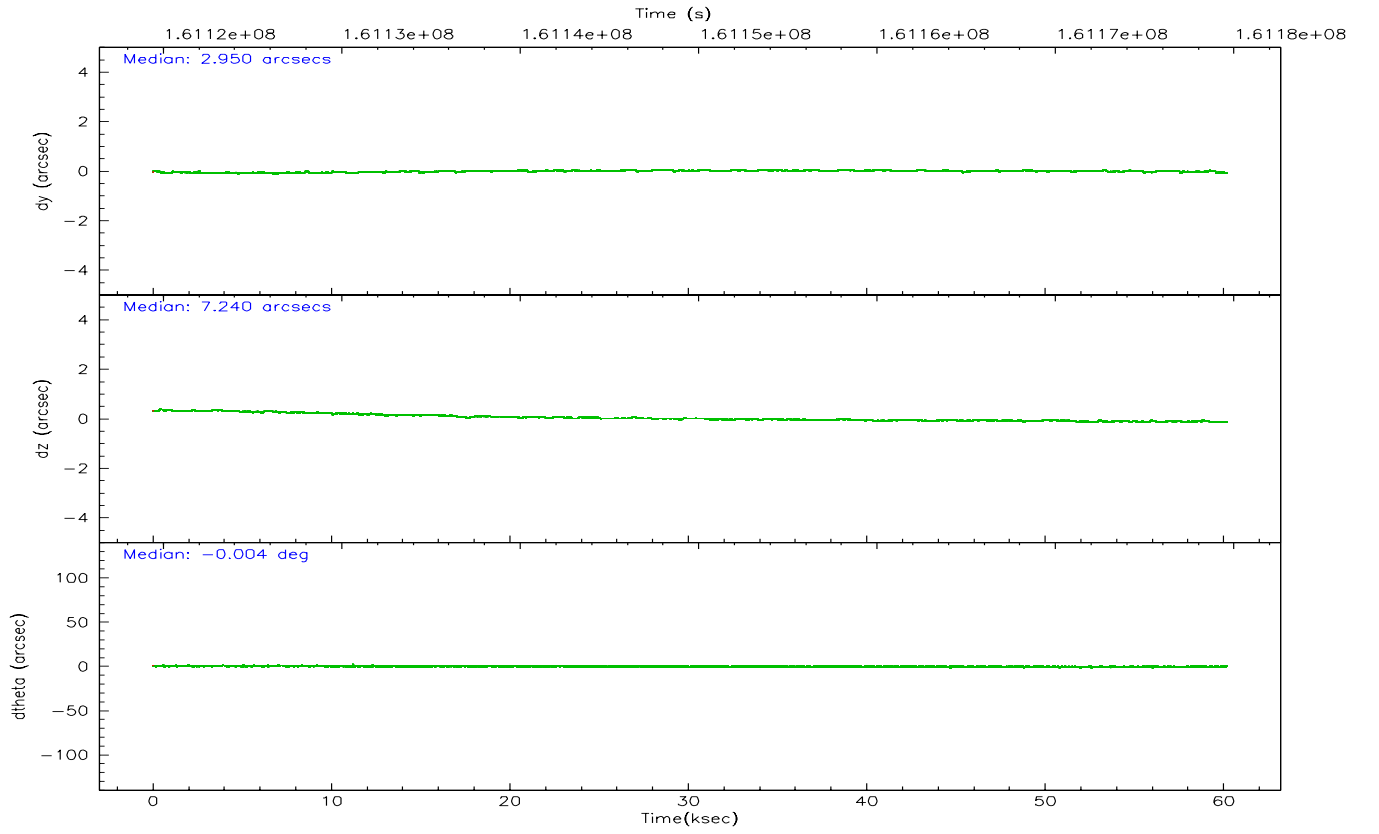
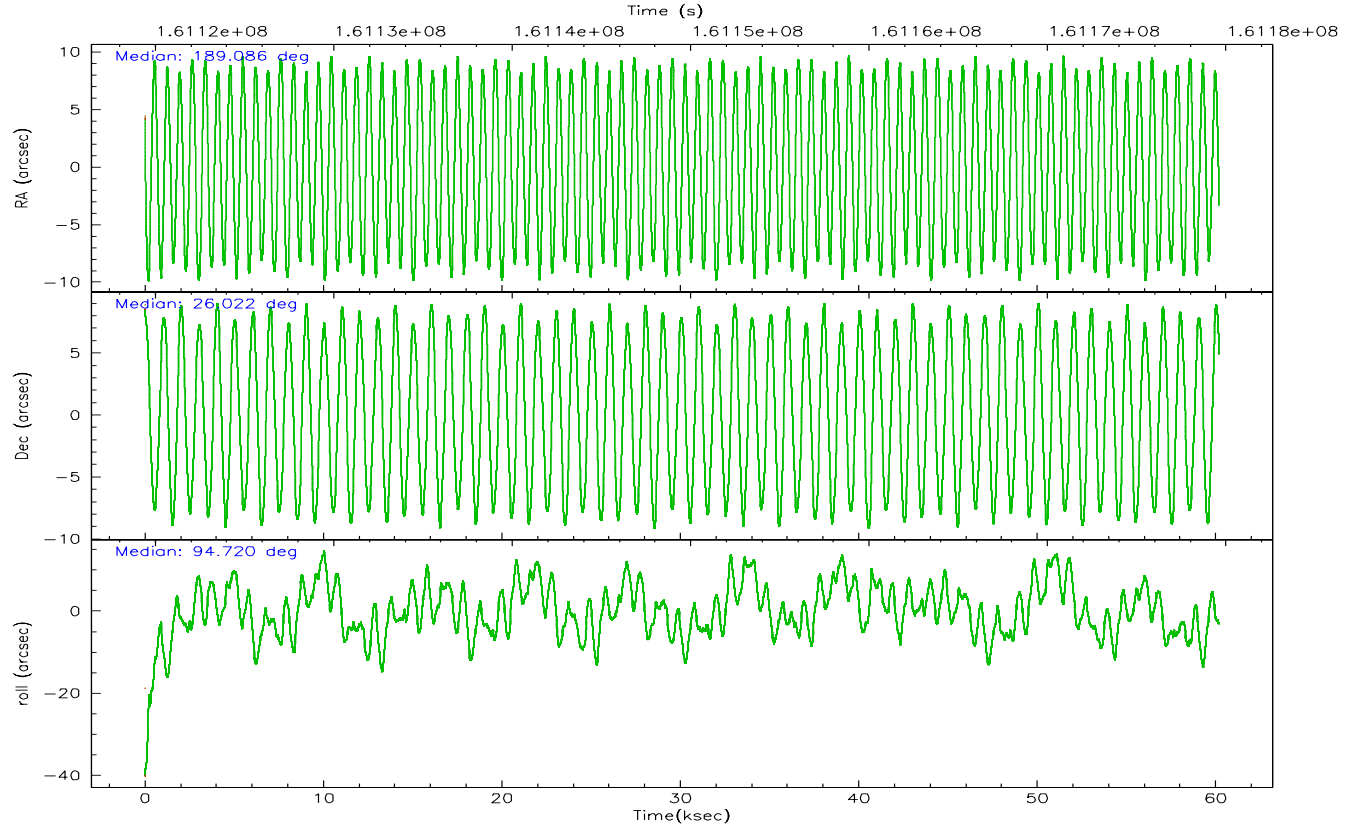
	ccd 2	ccd 3	ccd 5	ccd 6	ccd 7	ccd 8
grade 0 events	23260	22524	46798	21499	16543	35598
	5%	5%	7%	5%	3%	7%
grade 1 events	260	270	2995	215	328	316
	0%	0%	0%	0%	0%	0%
grade 2 events	9379	8807	81359	10009	54651	22844
	2%	2%	13%	2%	10%	4%
grade 3 events	4551	4597	6245	4795	12064	11278
	1%	1%	1%	1%	2%	2%
grade 4 events	4646	4619	5863	4632	11596	10223
	1%	1%	0%	1%	2%	2%
grade 5 events	15283	16530	27945	17932	35468	22967
	3%	4%	4%	4%	6%	4%
grade 6 events	7795	8165	148436	9537	125323	26665
	1%	2%	24%	2%	22%	5%
grade 7 events	344061	324490	293086	337524	289877	371042
	84%	83%	47%	83%	53%	74%

2.2 Compared Parameters

Parameter	Planned	Actual	Parameter	Planned	Actual
Instrument	ACIS	ACIS	Obspar format version number	6	6
Detector	ACIS-235678	ACIS-235678	Obspar file type	PREDICTED	ACTUAL
Grating	NONE	NONE	Obspar update status	NONE	UPDATED
Data mode	VFAINT	VFAINT	On-chip summing requested	N	N
Observation mode	POINTING	POINTING	Subarray requested	NONE	NONE
Pointing RA	189.103095	189.0855071109374	Alternating exposures requested	N	N
Pointing Dec	25.999660	26.02181621703632	Primary exposure time	0.000000	3.2
Pointing Roll	94.551206	94.71554982596406			
SIM focus pos (mm)	-0.684267	-0.6828225247311905			
SIM defocus (mm)	0	0.001444936568705701			
SIM translation stage pos (mm)	-190.132523	-190.1400660498719			
SIM translation stage offset (mm)	0	0.00754346686406393			
Observation start time	161119622.184000	161118657.65769			
Observation start date	2003-02-08T19:25:58	2003-02-08T19:10:57			
Observation end time	161179622.184000	161181209.82282			
Observation end date	2003-02-09T12:05:58	2003-02-09T12:33:29			
Read mode	TIMED	TIMED			

2.3 Aspect



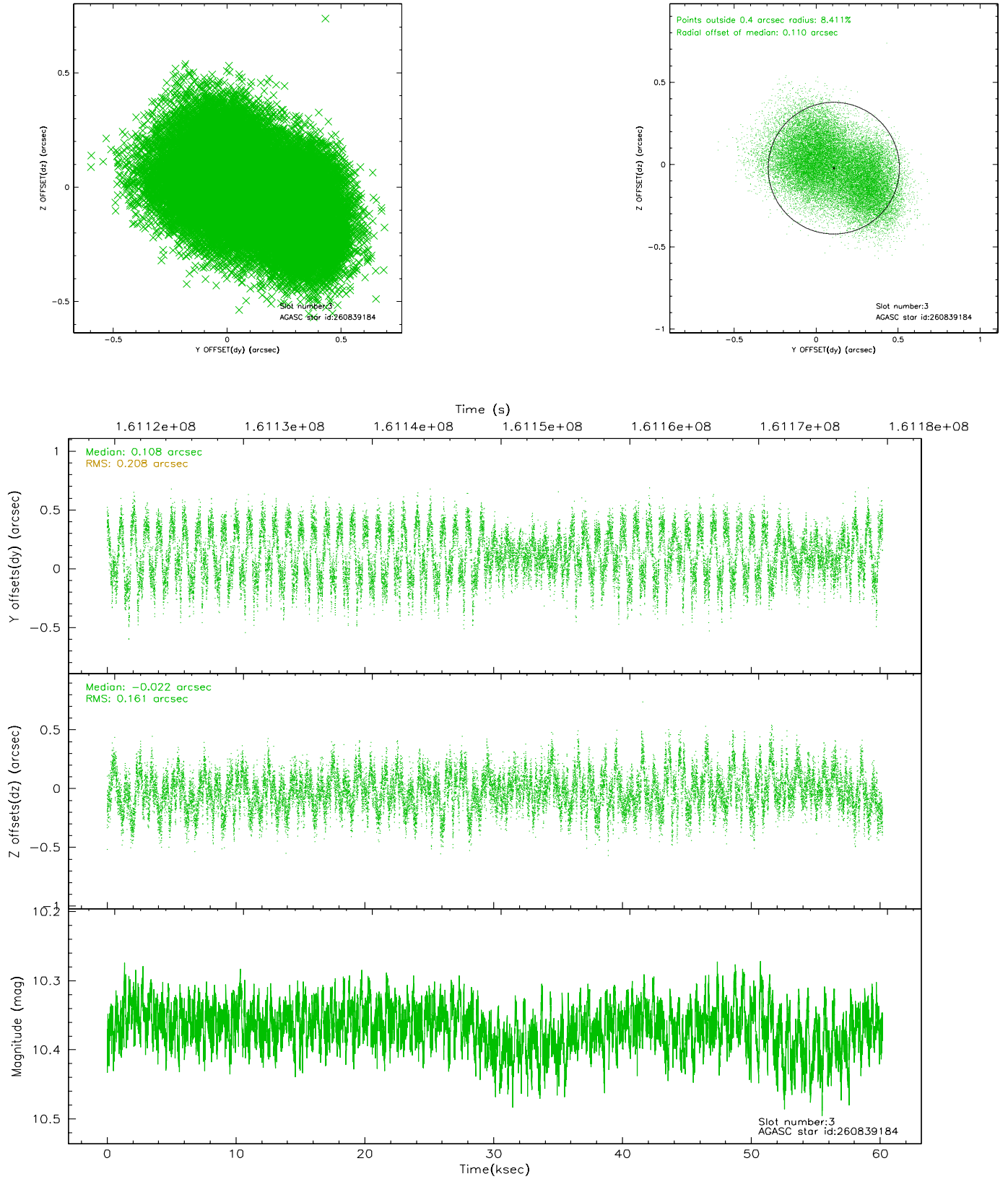


Slot Statistics

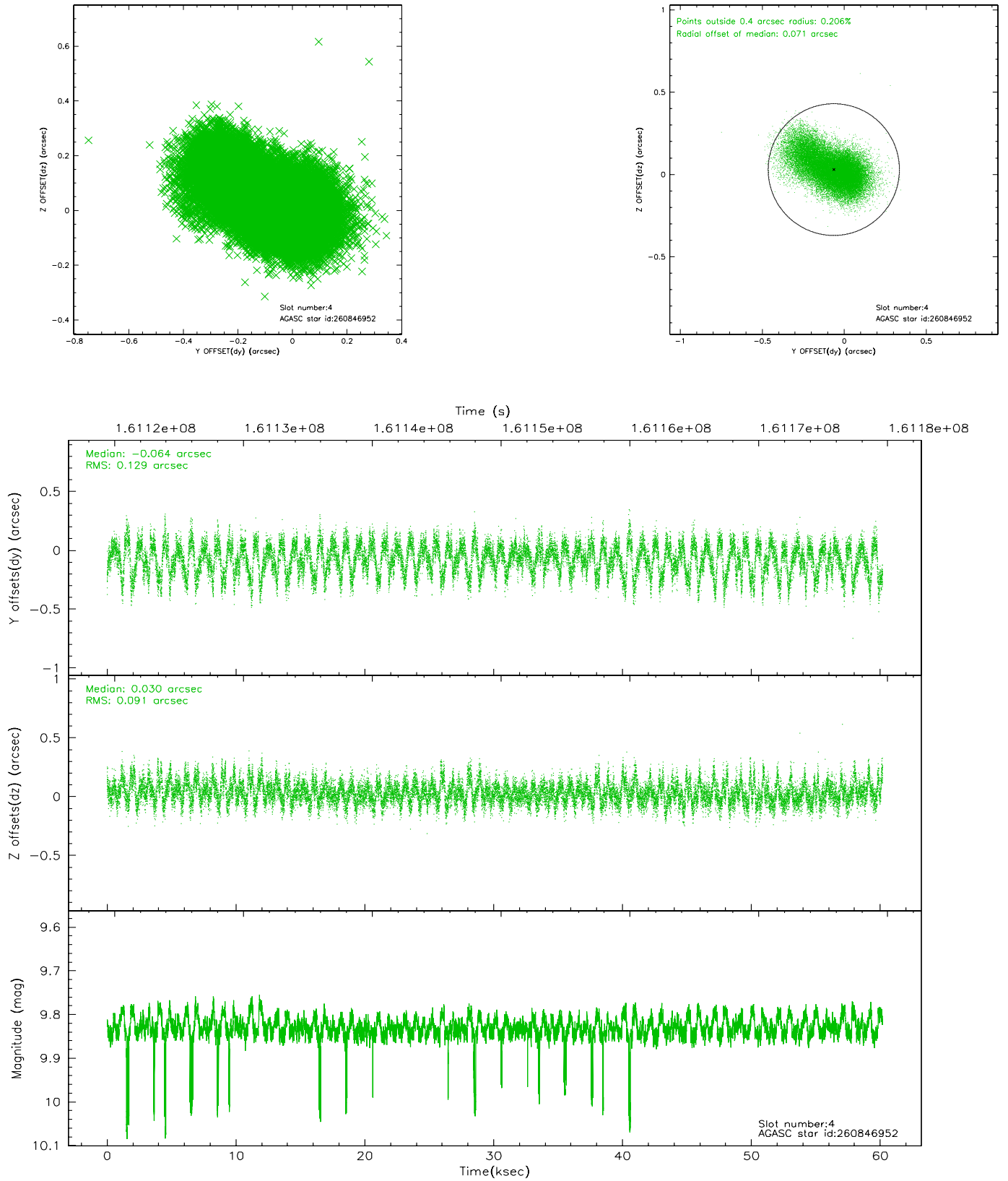
slot	status	id	mag	n_pts	med_dy	med_dz	dr1	dr2	ra	dec	mean_y	mean_z
0	FID	ACIS-S-2	7.12	14680	-0.012	0.017	0.007	0.012	0.000000	0.000000	-755.59	-1728.44
1	FID	ACIS-S-4	7.20	14679	-0.034	0.001	0.006	0.011	0.000000	0.000000	2157.68	180.07
2	FID	ACIS-S-5	7.24	14680	0.015	-0.009	0.006	0.010	0.000000	0.000000	-1808.47	173.68
3	GUIDE	260839184	10.37	28748	0.108	-0.022	0.288	0.433	188.589705	25.458553	-1805.96	1818.47
4	GUIDE	260846952	9.83	29154	-0.064	0.030	0.165	0.285	189.003435	25.755336	-851.13	392.23
5	GUIDE	260853184	9.20	29347	0.049	0.153	0.091	0.145	189.165500	25.791548	-763.11	-141.80
6	GUIDE	260856976	7.58	29356	0.052	-0.083	0.073	0.115	189.008015	25.423610	-2042.69	472.93
7	GUIDE	261097208	8.49	29348	-0.137	-0.076	0.085	0.132	188.588563	26.289040	1173.27	1572.49

2.4 Star Slots

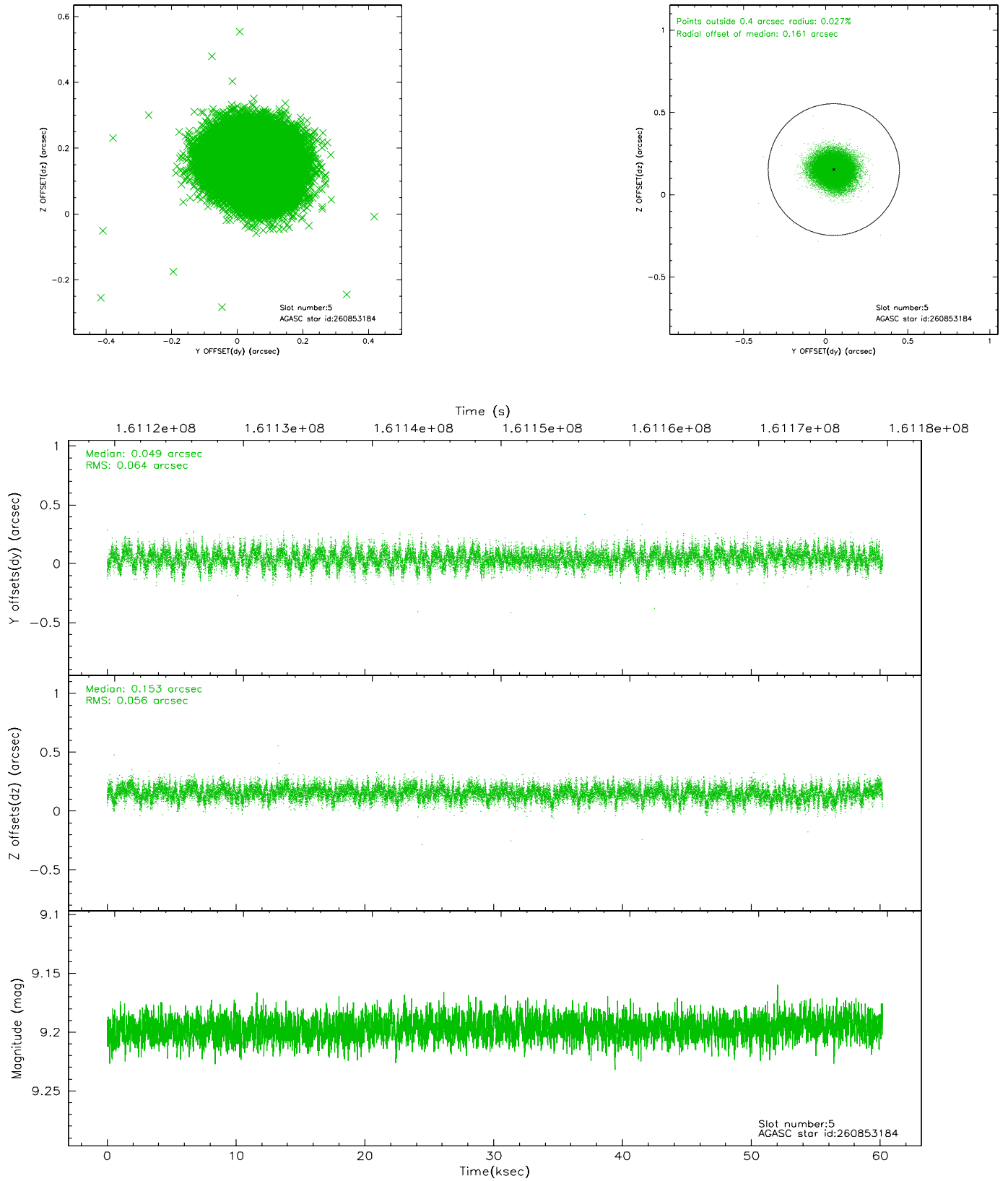
2.4.1 Slot 3



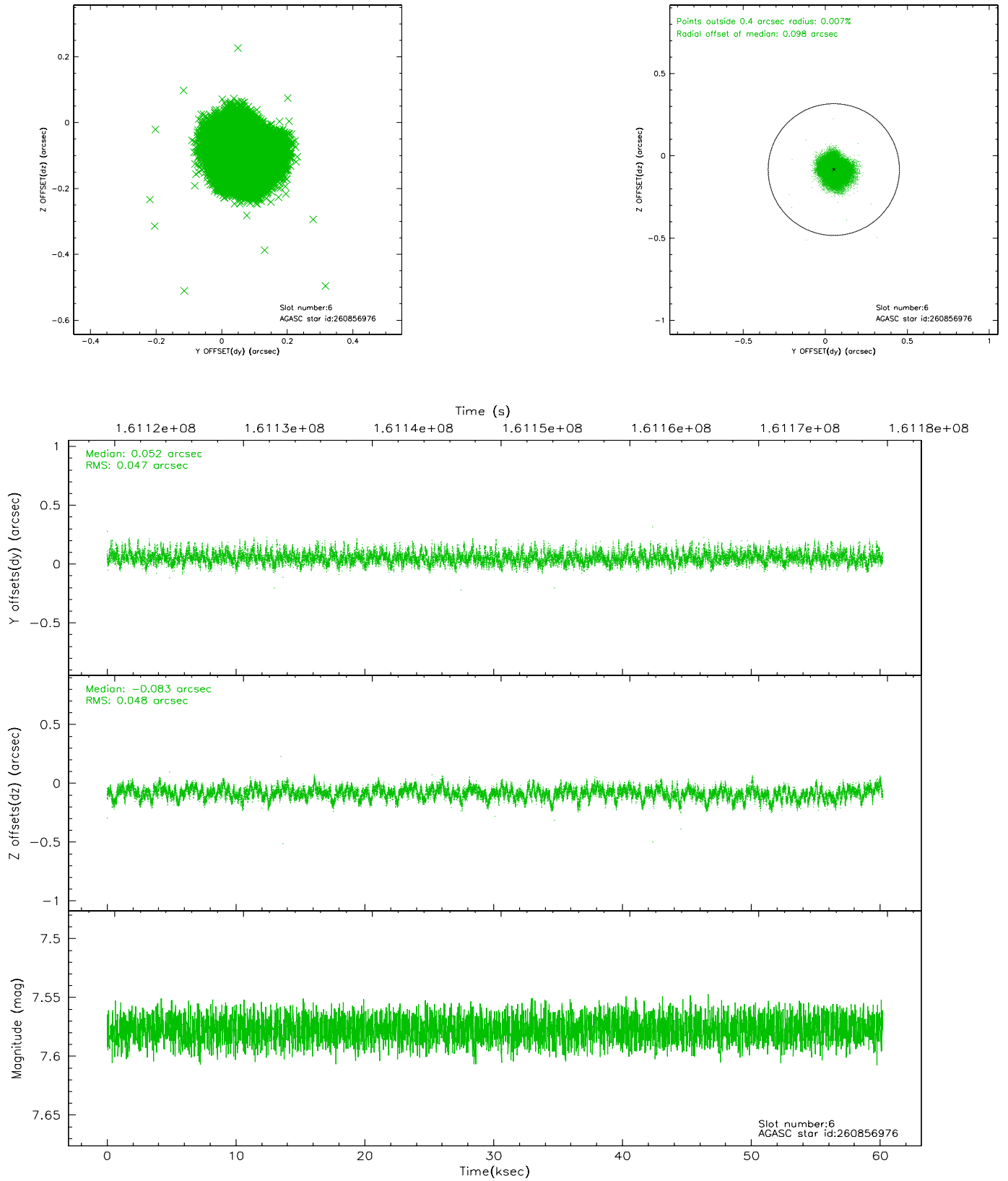
2.4.2 Slot 4



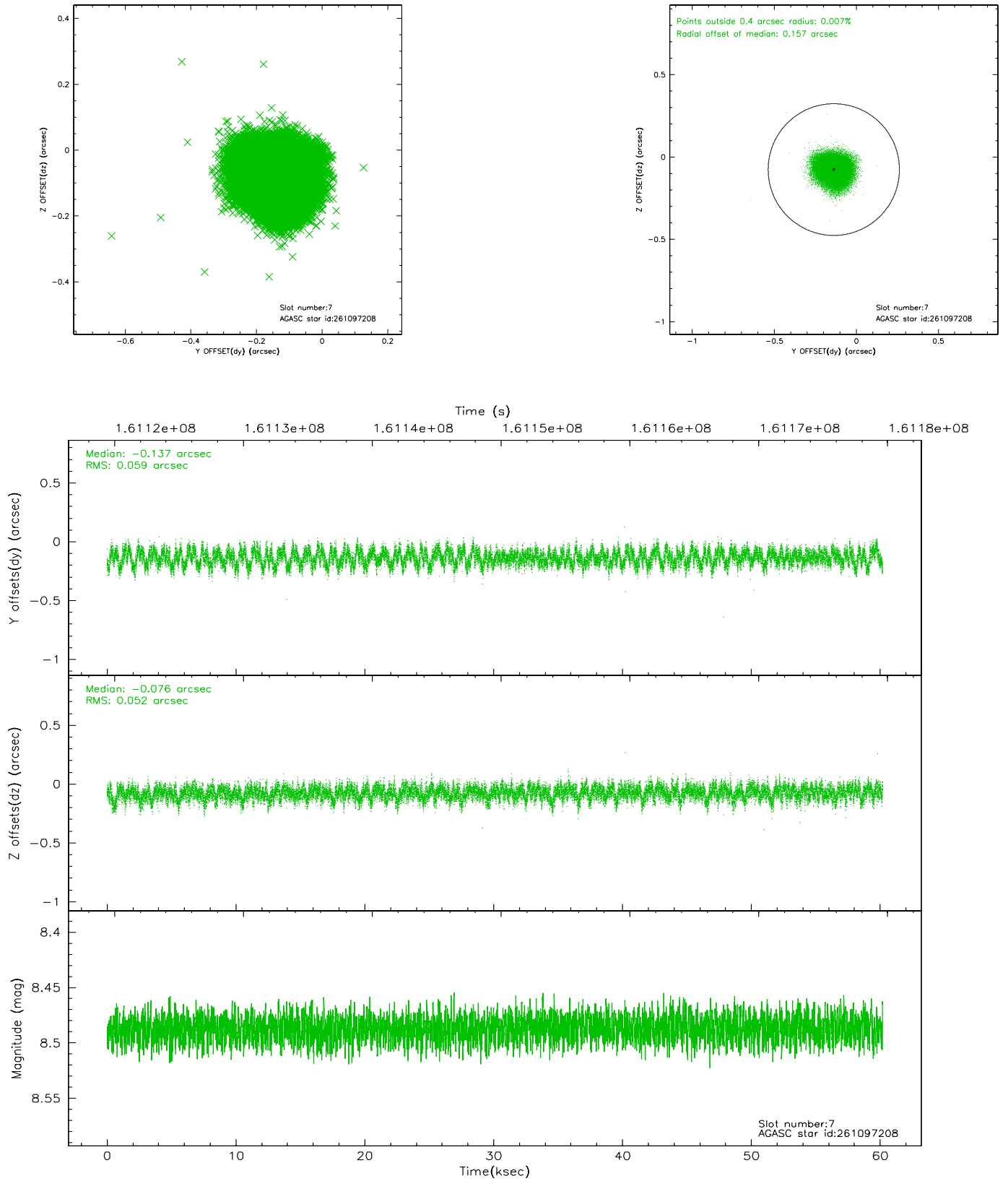
2.4.3 Slot 5



2.4.4 Slot 6

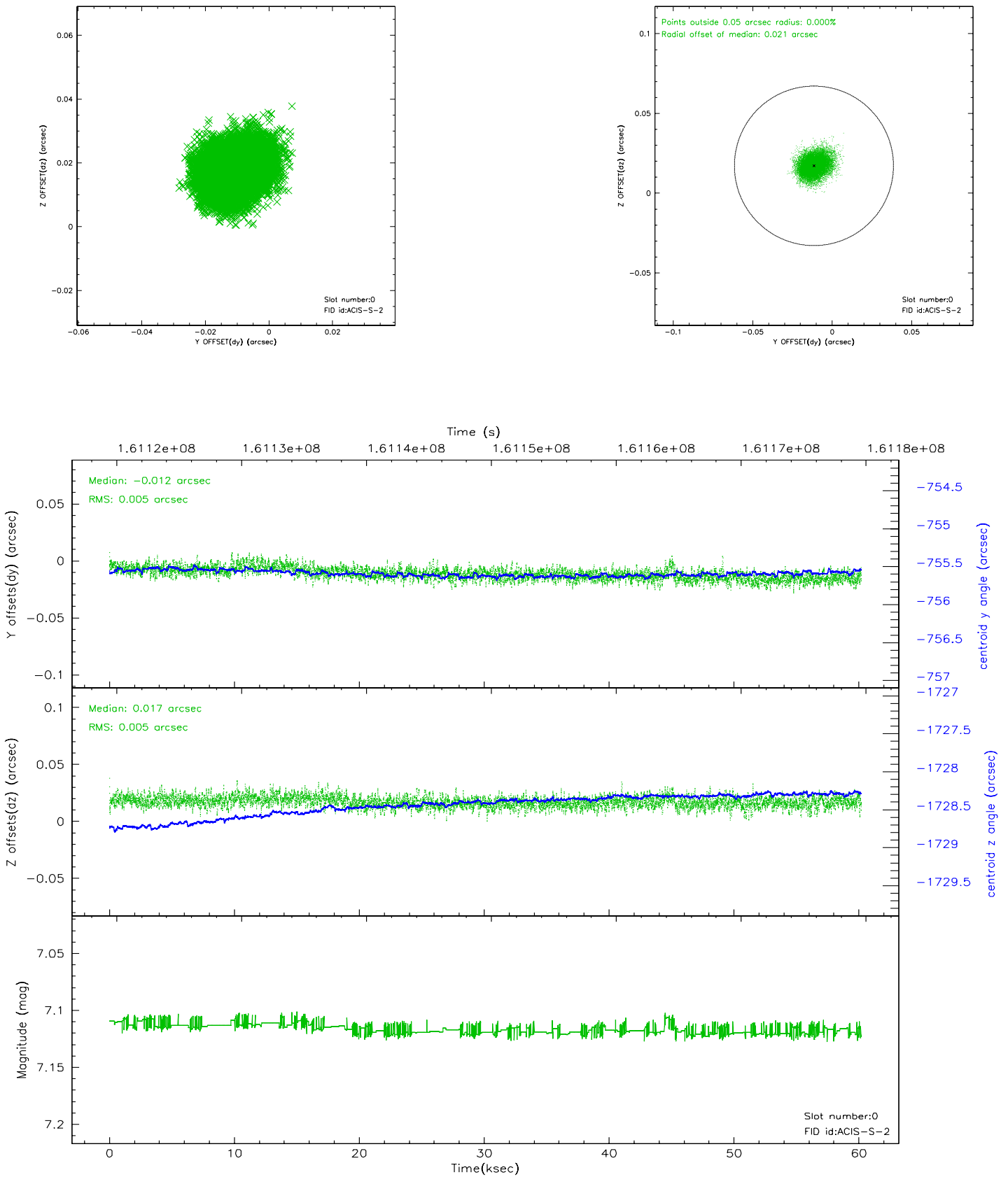


2.4.5 Slot 7

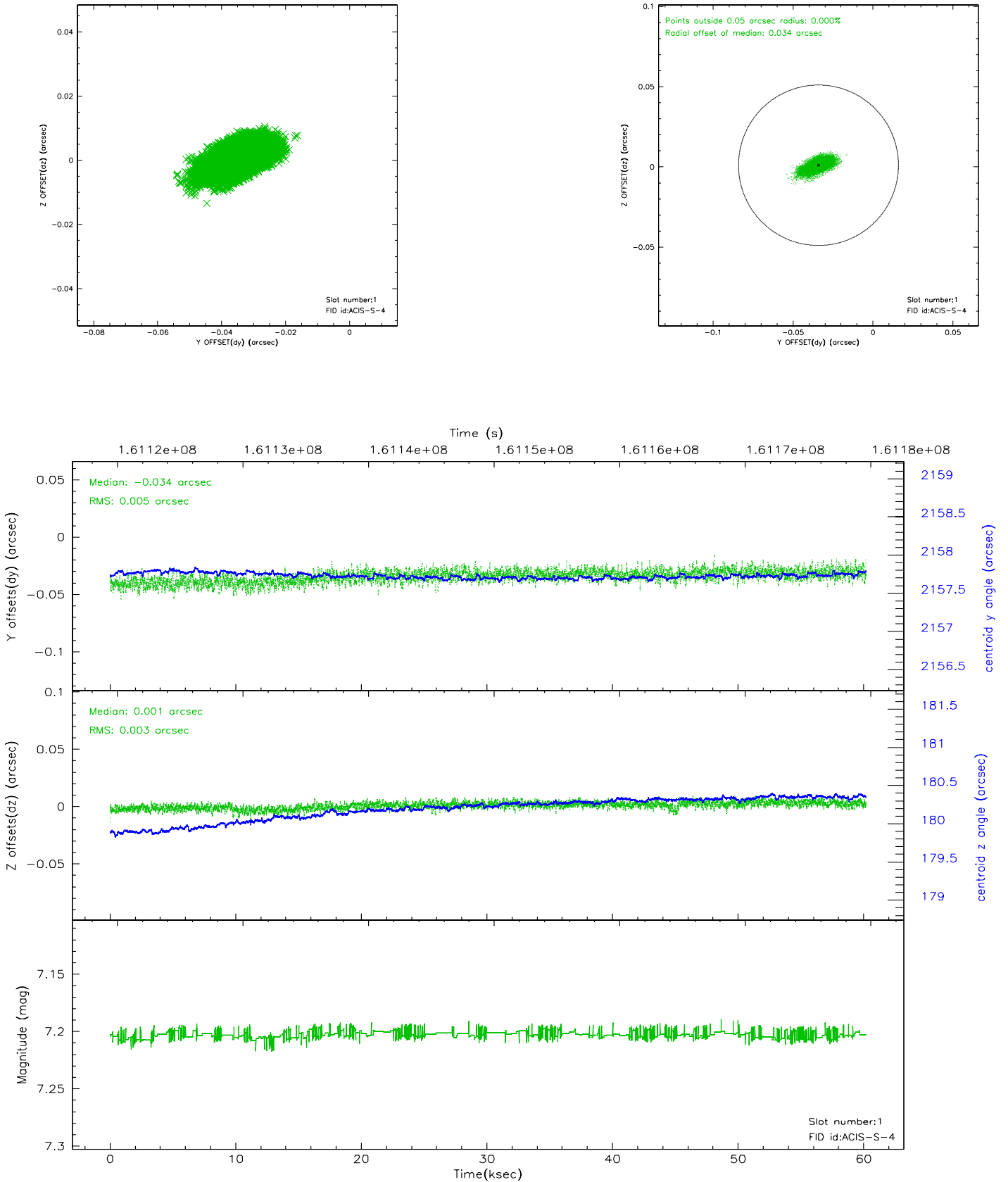


2.5 FID Slots

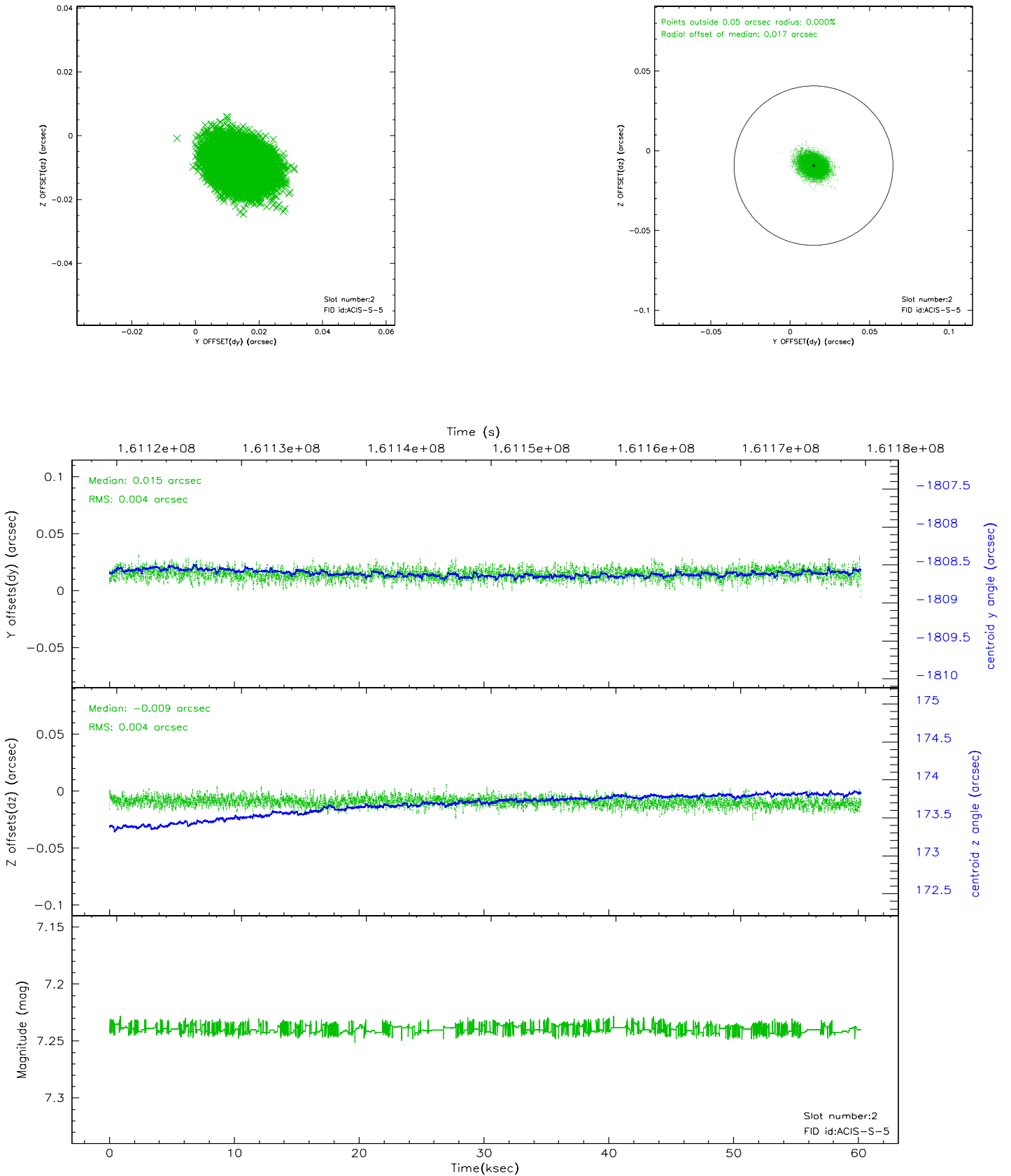
2.5.1 Slot 0



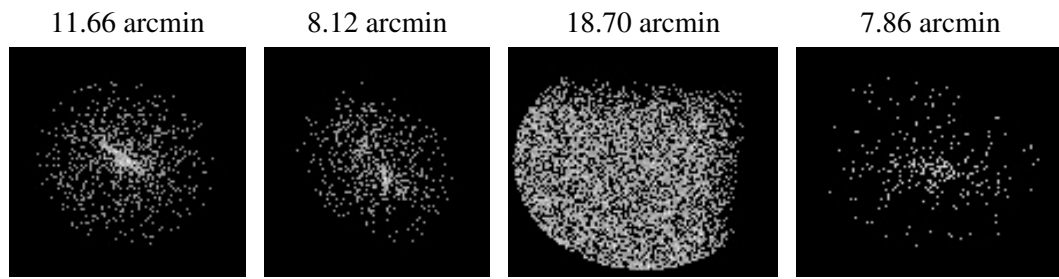
2.5.2 Slot 1



2.5.3 Slot 2



3 Point Sources



A Summary

A.1 Status

V&V Scientist	Beth Sundheim
V&V Date (YYYY-MM-DD)	2006.07.21
V&V Edition	1
V&V Disposition and Status	OK
V&V Charge Time	59.955

A.2 Comments

Comments for Obi 0

Star in slot 3 has an RMS deviation > 0.200000 arcsec