

V&V Reference Report

L2 ASCDS Version : 8.4.5

Observation 3935 - L2 Version 3
Chandra X-Ray Center

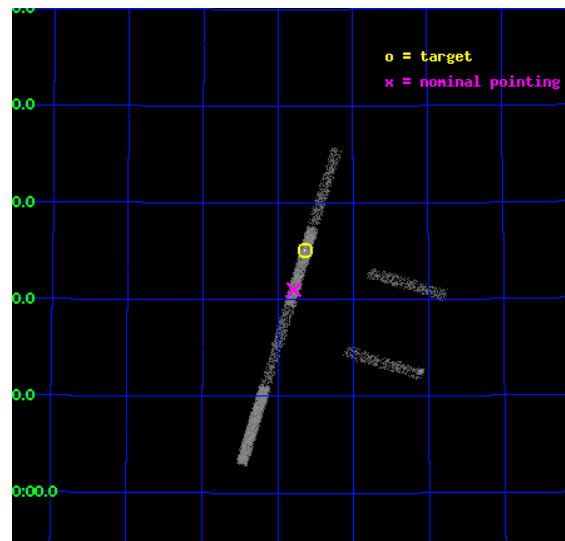
L2 Processing Date : Nov 3 2012

Contents

1	Front	2
2	OBI	3
2.1	OBI	3
2.1.1	Images	3
2.1.2	Bias	3
2.1.3	Parameters	4
2.1.4	Events	4
2.2	Compared Parameters	5
2.3	Aspect	6
2.4	Star Slots	9
2.4.1	Slot 3	9
2.4.2	Slot 4	10
2.4.3	Slot 5	11
2.4.4	Slot 6	12
2.4.5	Slot 7	13
2.5	FID Slots	14
2.5.1	Slot 0	14
2.5.2	Slot 1	15
2.5.3	Slot 2	16
A	Summary	17
A.1	Status	17
A.2	Comments	17

1 Front

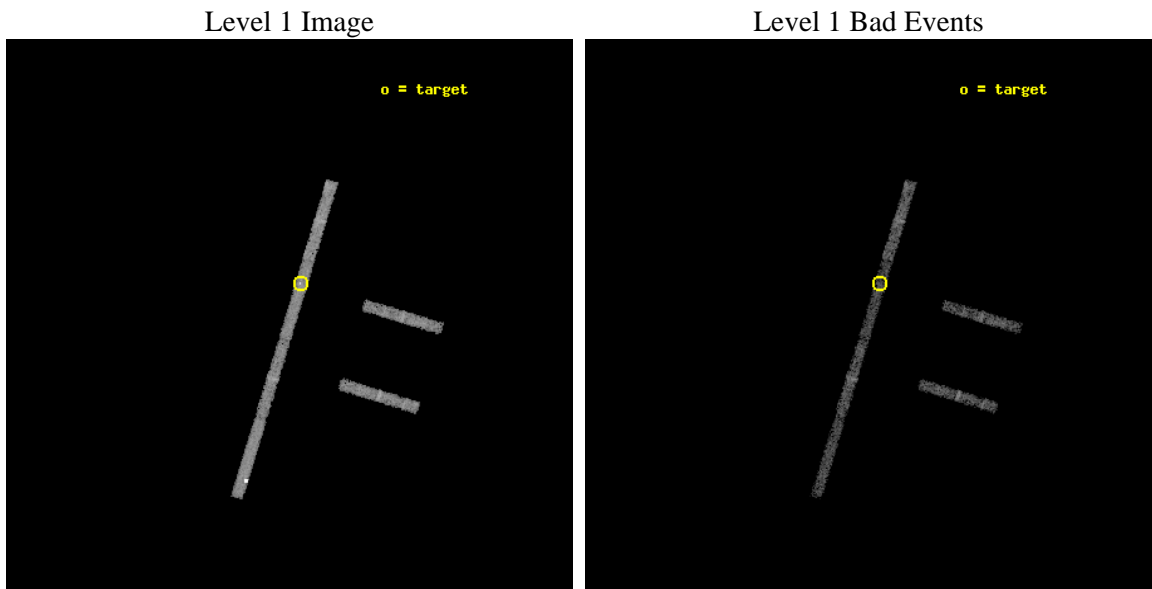
seq_num	600309	Sequence number
obs_id	3935	Observation id
title	PROBING THE SPECTRAL VARIABILITY OF THE ULTRALUMINOUS X-RAY SOURCE NGC 5204 X-1	Proposal title
observer	Dr Timothy Roberts	Principal investigator
object	NGC 5204 X-1	Source name
dtcycle	0	
cycle	P	events from which exps? Prim/Second/Both
ra_targ	202.410833	Observer's specified target RA [deg]
dec_targ	58.418333	Observer's specified target Dec [deg]
ra_nom	202.44692446937	Nominal RA [deg]
dec_nom	58.35024818876	Nominal Dec [deg]
roll_nom	286.9633667708	Nominal Roll [deg]
revision	3	Processing version of data
ontime	4764.8588987589	Sum of GTIs [s]
livetime	4500.9732661276	Livetime [s]
ontime2	4764.8588987589	Sum of GTIs [s]
ontime3	4764.8588987589	Sum of GTIs [s]
ontime5	4764.8588987589	Sum of GTIs [s]
ontime6	4764.8588788509	Sum of GTIs [s]
ontime7	4764.8588987589	Sum of GTIs [s]
ontime8	4764.8588987589	Sum of GTIs [s]
l2events	8155	Number of level 2 events



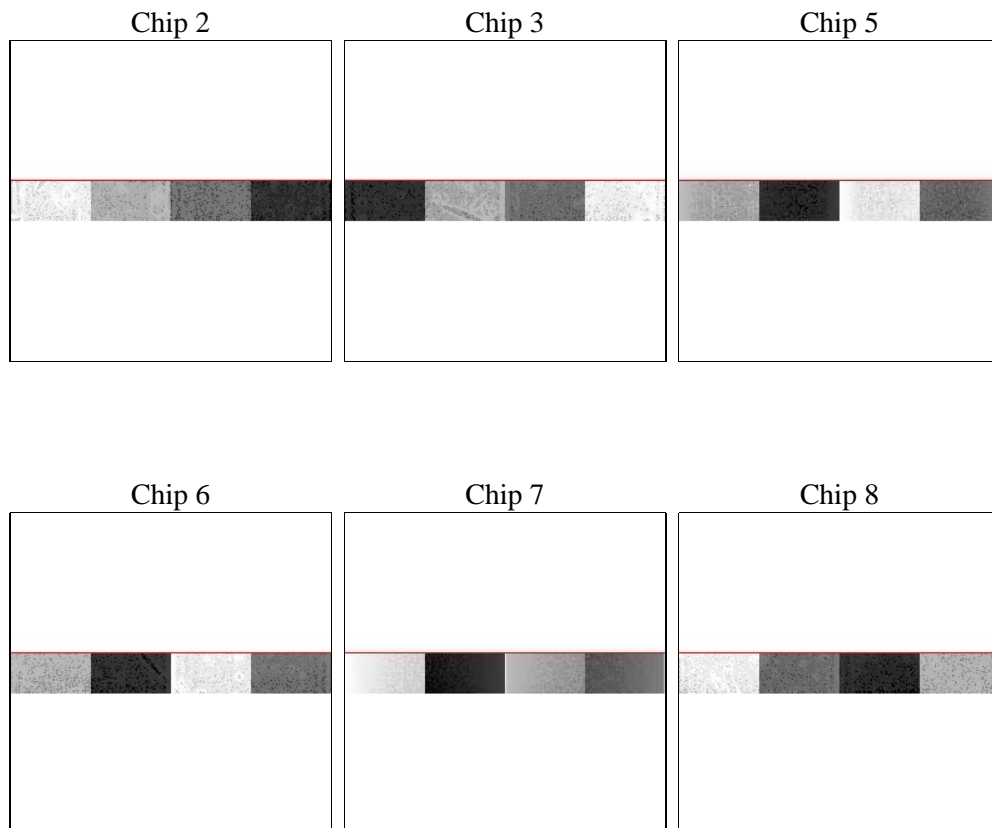
2 OBI

2.1 OBI

2.1.1 Images



2.1.2 Bias



2.1.3 Parameters

obi_num	0	Obi number	sched_exp_time	4600.000000	[s] Scheduled observation exposure time
ascdsver	8.4.5	Processing system revision	ontime	4764.8588987589	Sum of GTIs [s]
caldsver	4.5.2	 	ontime2	4764.8588987589	Sum of GTIs [s]
date	2012-11-03T14:24:10	Date and time of file creation	ontime3	4764.8588987589	Sum of GTIs [s]
revision	3	Processing version of data	ontime5	4764.8588987589	Sum of GTIs [s]
			ontime6	4764.8588788509	Sum of GTIs [s]
			ontime7	4764.8588987589	Sum of GTIs [s]
			ontime8	4764.8588987589	Sum of GTIs [s]
			l1events	44762	Number of level 1 events

2.1.4 Events

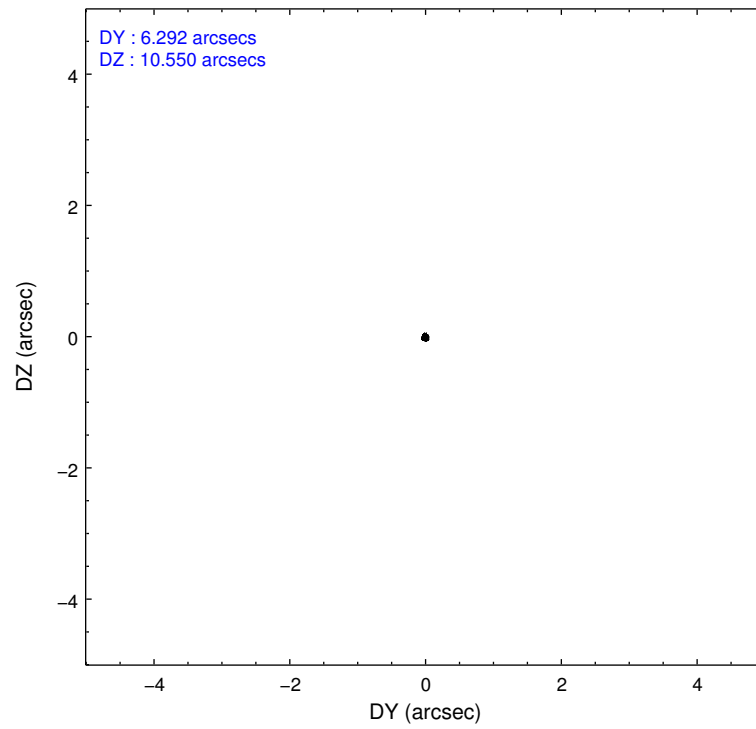
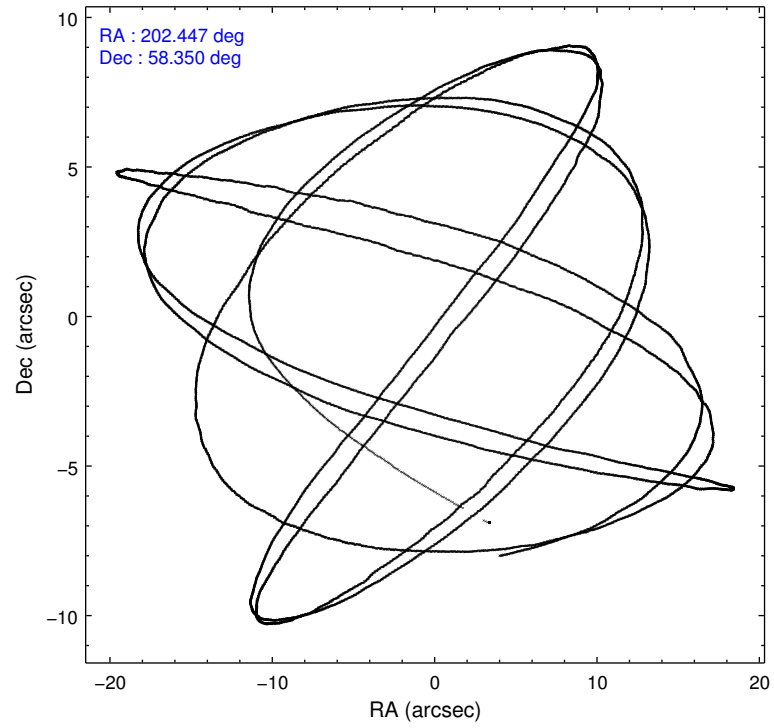
	ccd 2	ccd 3	ccd 5	ccd 6	ccd 7	ccd 8
level 1 events	5736	5462	12622	5745	7014	8183
rejected events	5043	4860	4356	5106	3745	6787
rejected %	87%	88%	34%	88%	53%	82%

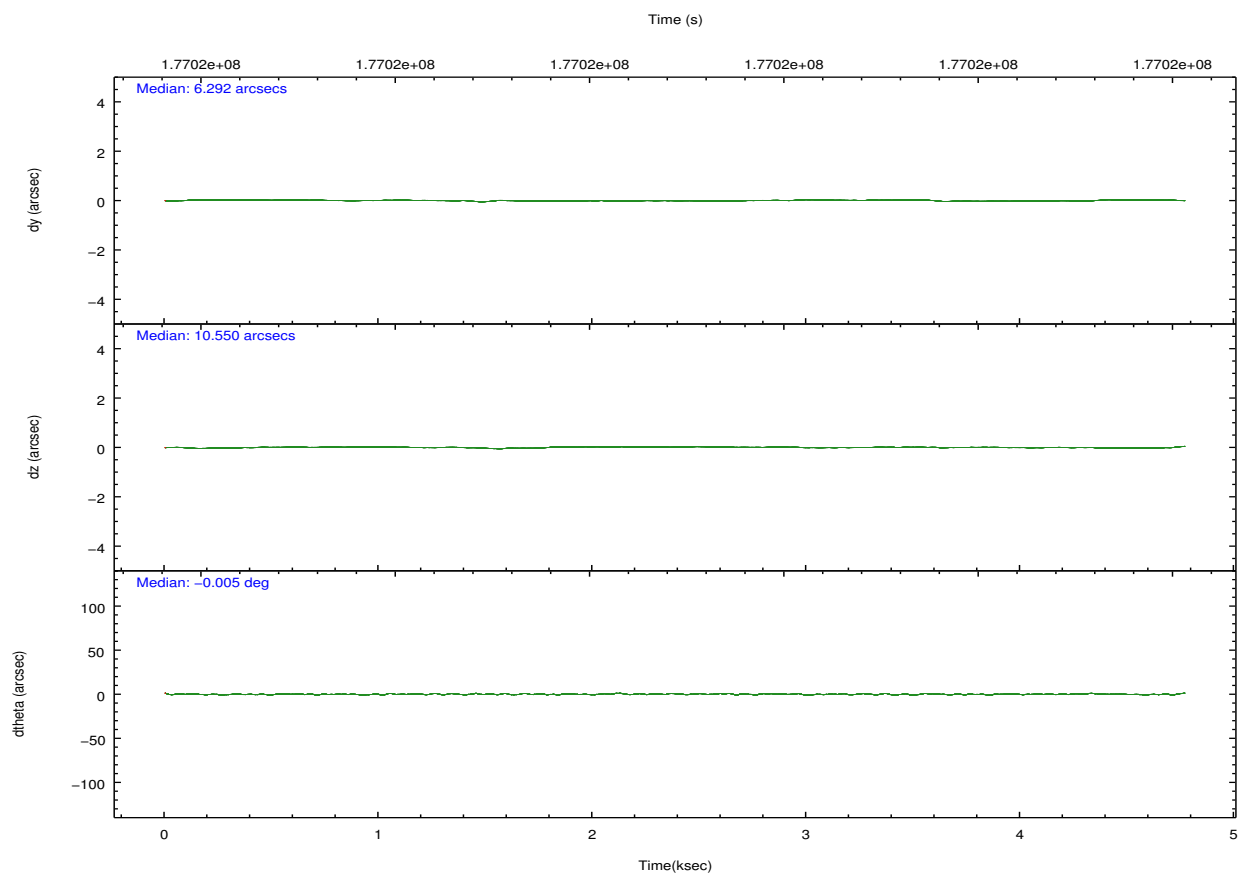
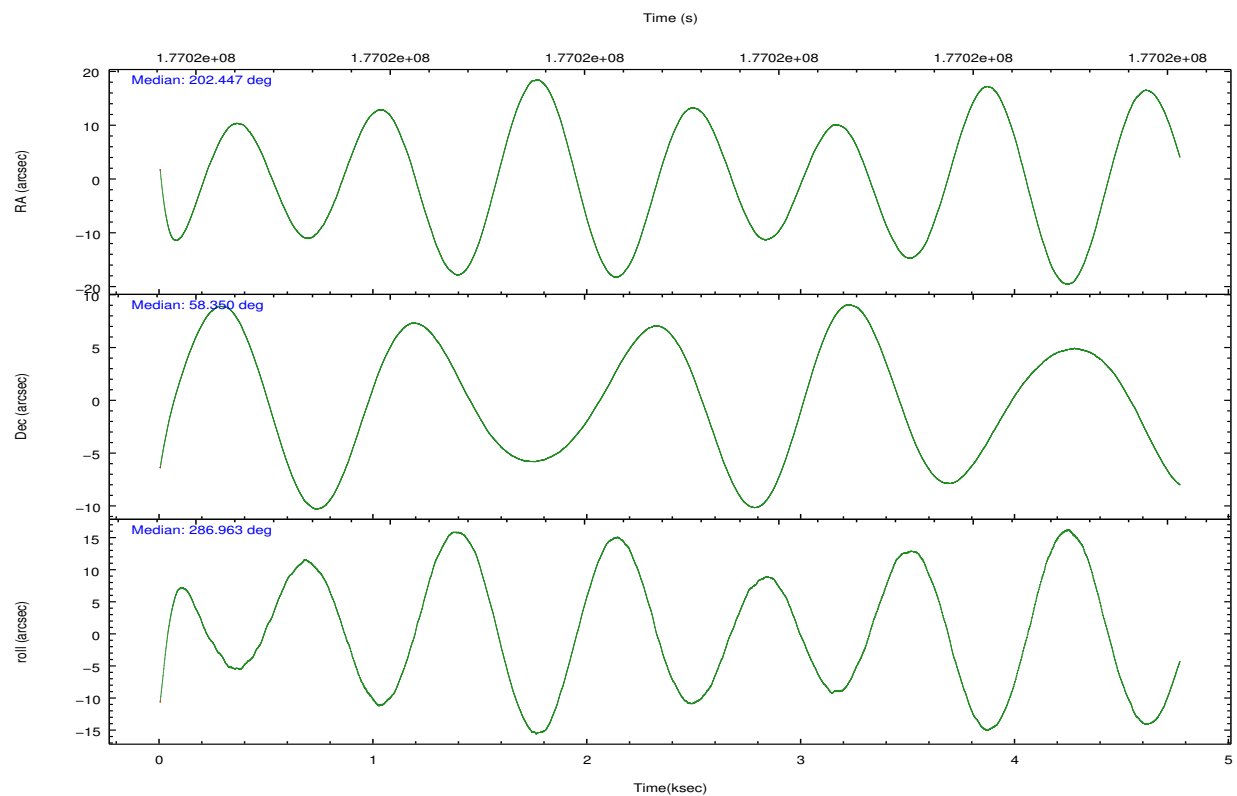
	ccd 2	ccd 3	ccd 5	ccd 6	ccd 7	ccd 8
grade 0 events	336	257	6032	251	565	397
	5%	4%	47%	4%	8%	4%
grade 1 events	4	0	22	0	7	4
	0%	0%	0%	0%	0%	0%
grade 2 events	116	104	926	140	727	294
	2%	1%	7%	2%	10%	3%
grade 3 events	96	104	224	97	370	173
	1%	1%	1%	1%	5%	2%
grade 4 events	80	105	234	89	342	159
	1%	1%	1%	1%	4%	1%
grade 5 events	197	160	535	189	538	256
	3%	2%	4%	3%	7%	3%
grade 6 events	95	82	1614	113	1492	461
	1%	1%	12%	1%	21%	5%
grade 7 events	4812	4650	3035	4866	2973	6439
	83%	85%	24%	84%	42%	78%

2.2 Compared Parameters

Parameter	Planned	Actual	Parameter	Planned	Actual
Instrument	ACIS	ACIS	Obspar format version number	7	7
Detector	ACIS-235678	ACIS-235678	Obspar file type	PREDICTED	ACTUAL
Grating	NONE	NONE	Obspar update status	NONE	UPDATED
Data mode	FAINT	FAINT	Number of optional ACIS chips dropped	0	0
Observation mode	POINTING	POINTING	On-chip summing requested	N	N
[deg] Pointing RA	202.408385	202.446924469366	Subarray requested	CUSTOM	1/8
[deg] Pointing Dec	58.368481	58.35024818876028	Subarray start row	449	449
[deg] Pointing Roll	286.839579	286.9633667707974	Subarray row count	128	128
[mm] SIM focus pos	-0.684267	-0.6828225247311905	Alternating exposures requested	N	N
[mm] SIM defocus	0	0.001444936568705701	[s] Primary exposure time	0.000000	0.7
[mm] SIM translation stage pos	-190.132523	-190.1425803651734			
[mm] SIM translation stage offset	0	0.01005778216563158			
[s] Observation start time (MET)	177017229.184000	177016234.08083			
Observation start date	2003-08-11T19:26:05	2003-08-11T19:10:34			
[s] Observation end time (MET)	177021829.184000	177023435.21864			
Observation end date	2003-08-11T20:42:45	2003-08-11T21:10:35			
Read mode	TIMED	TIMED			

2.3 Aspect



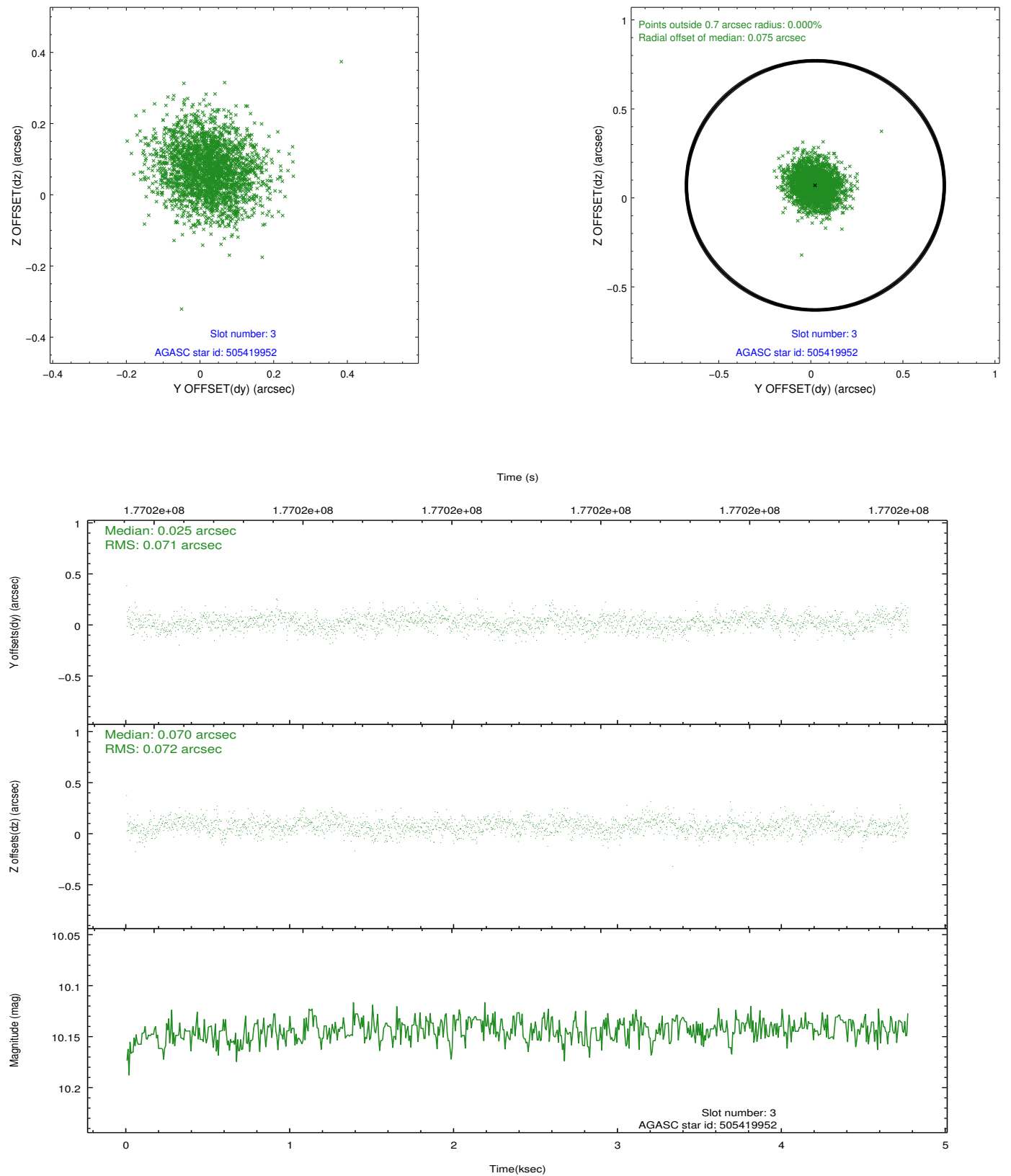


Slot Statistics

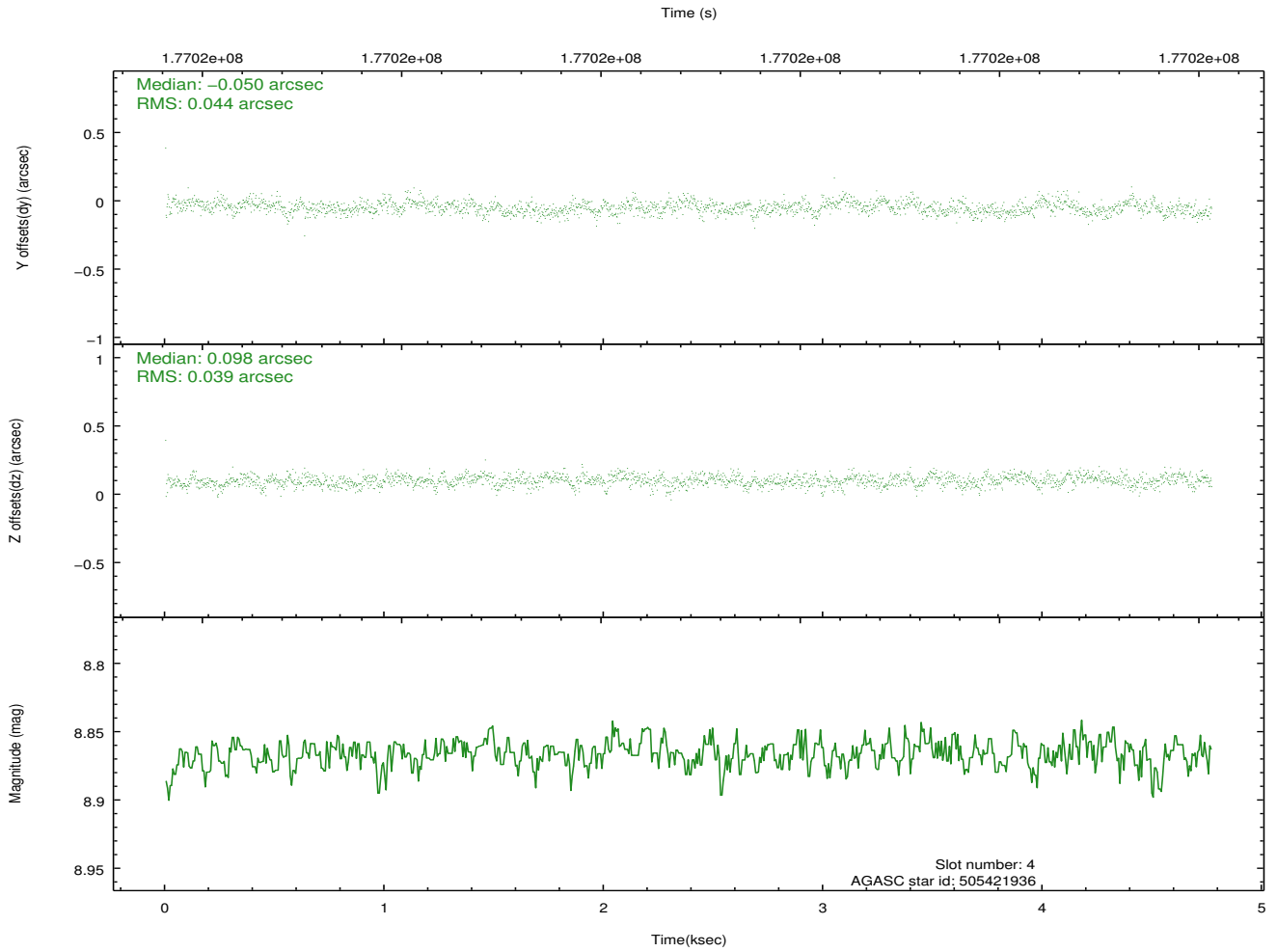
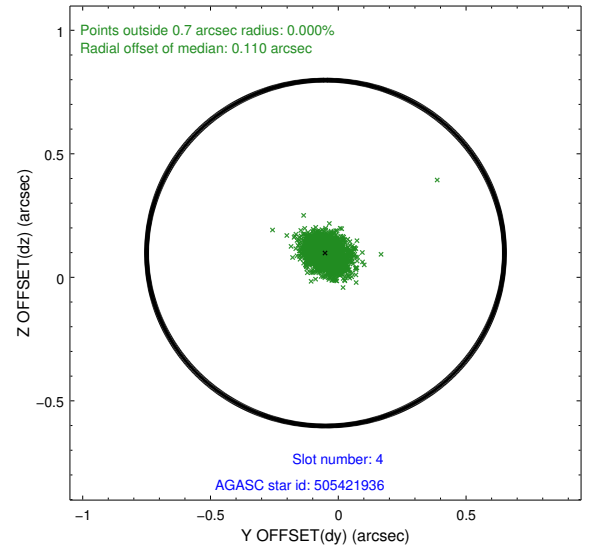
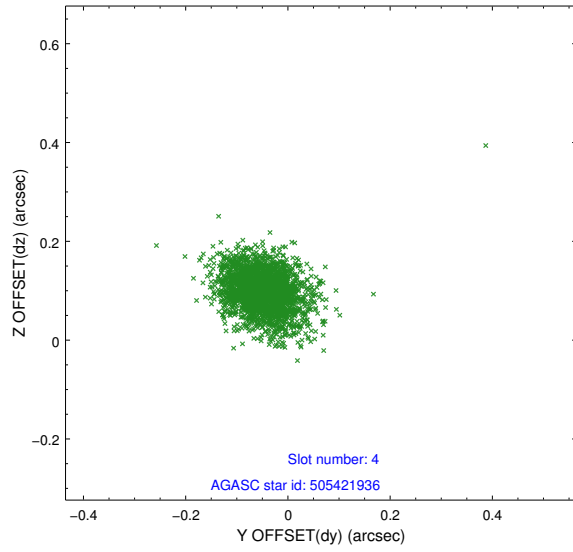
slot	status	id	mag	n_pts	med_dy	med_dz	dr1	dr2	ra	dec	mean_y	mean_z
0	FID	ACIS-S-1	7.18	1163	0.009	-0.038	0.006	0.011	0.000000	0.000000	937.01	-1727.43
1	FID	ACIS-S-5	7.23	1162	-0.033	0.005	0.006	0.011	0.000000	0.000000	-1811.29	168.87
2	FID	ACIS-S-6	7.34	1162	0.002	0.045	0.006	0.010	0.000000	0.000000	401.19	814.30
3	GUIDE	505419952	10.14	2322	0.025	0.070	0.107	0.172	201.880700	58.804366	-1789.96	-486.12
4	GUIDE	505421936	8.87	2322	-0.050	0.098	0.060	0.101	201.854843	57.887820	1345.02	-1514.13
5	GUIDE	505421968	8.18	2324	0.020	-0.029	0.063	0.100	202.022601	58.209270	335.90	-866.55
6	GUIDE	505422344	8.62	2325	0.036	-0.055	0.059	0.098	202.767077	57.846963	1995.22	113.90
7	GUIDE	505418080	9.05	2323	-0.029	-0.086	0.070	0.114	201.533017	58.898788	-2307.47	-1002.07

2.4 Star Slots

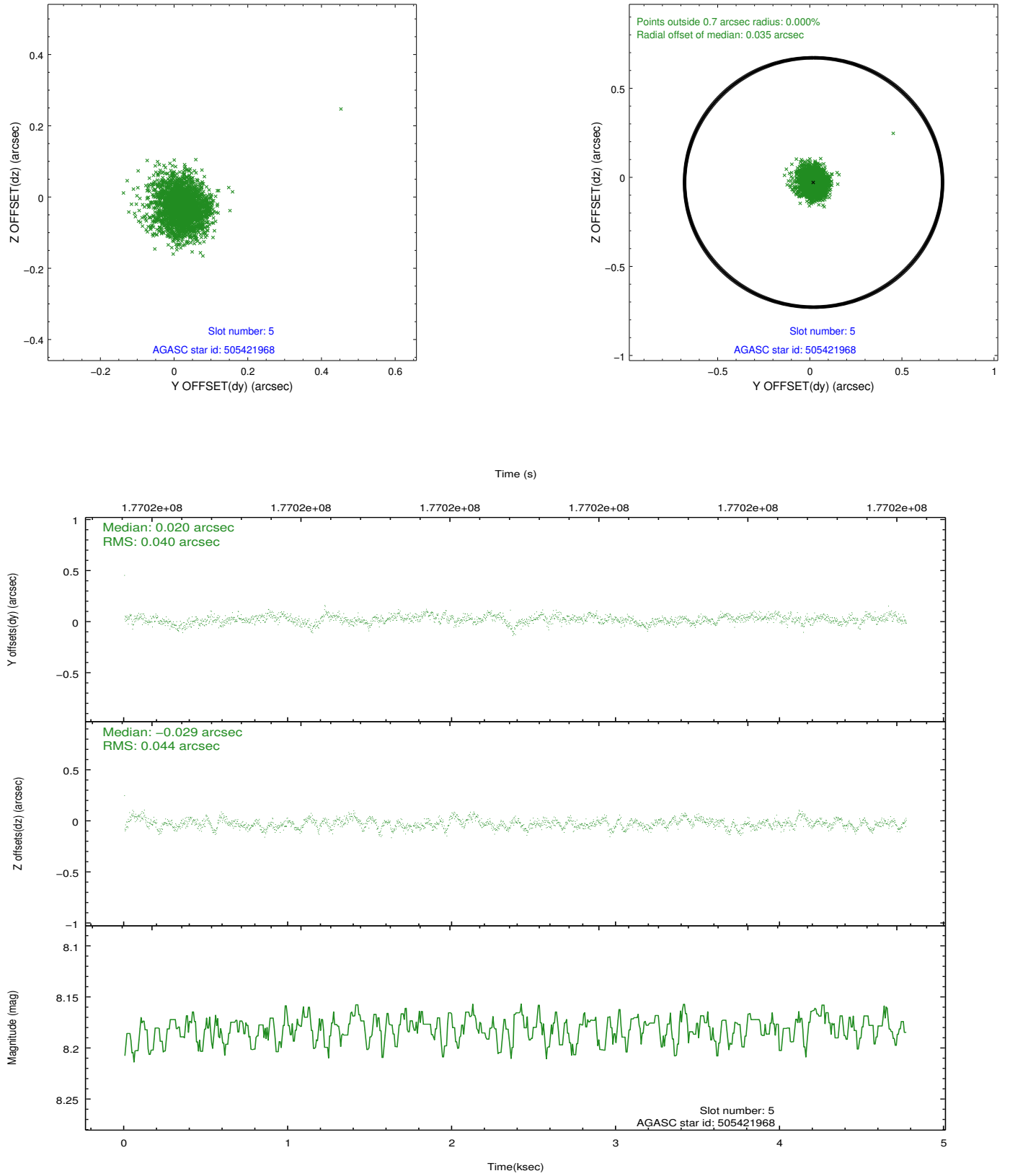
2.4.1 Slot 3



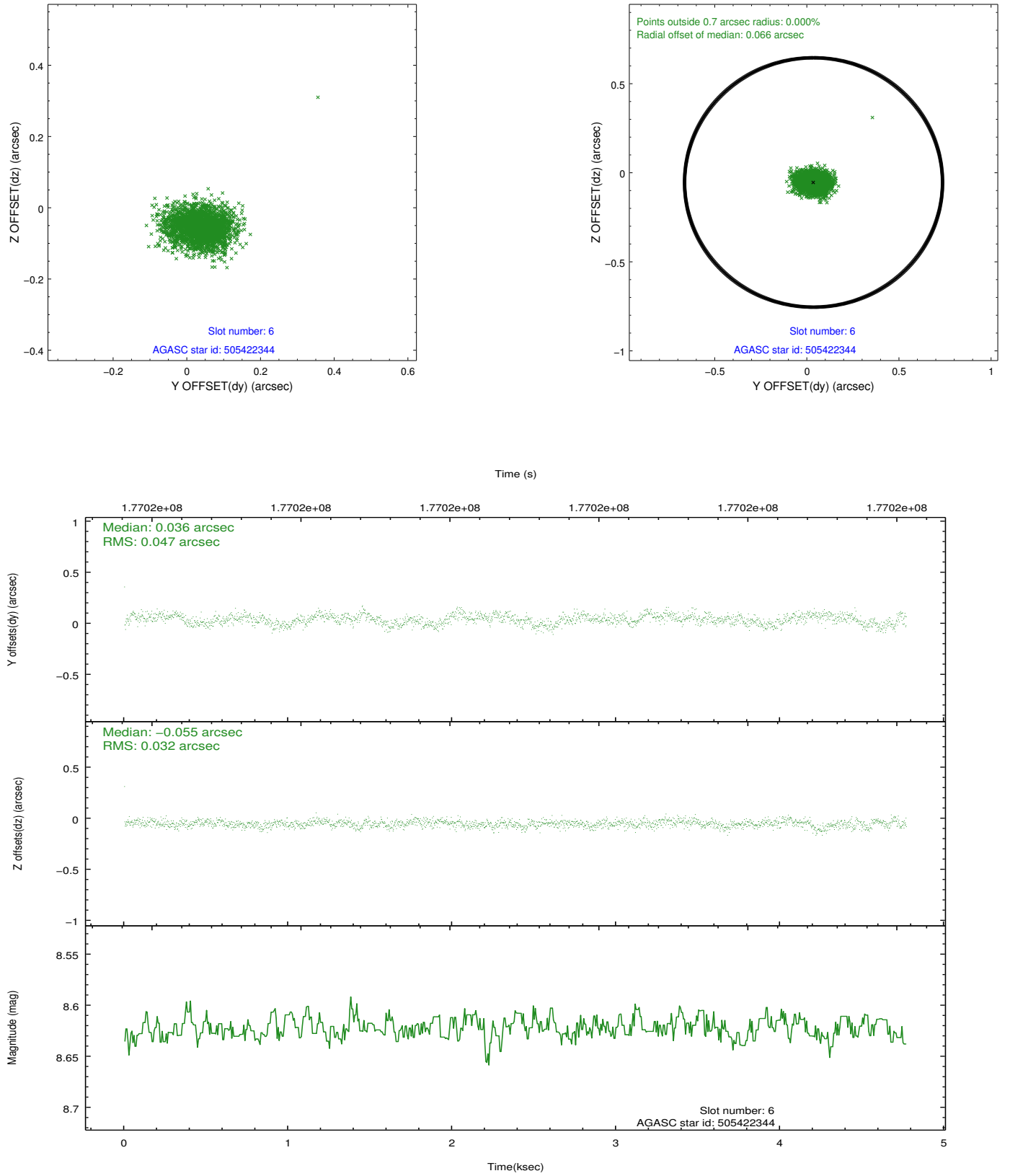
2.4.2 Slot 4



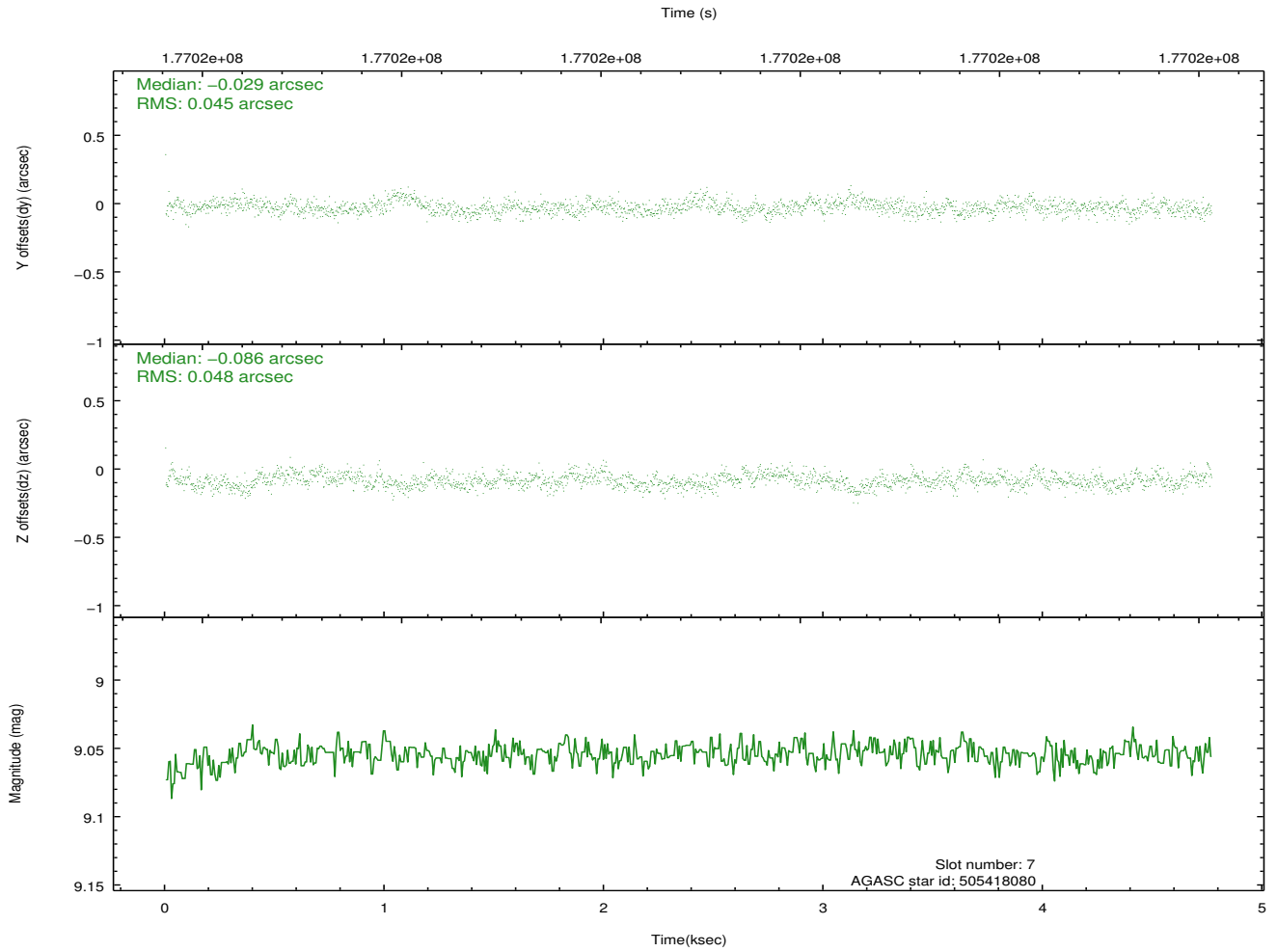
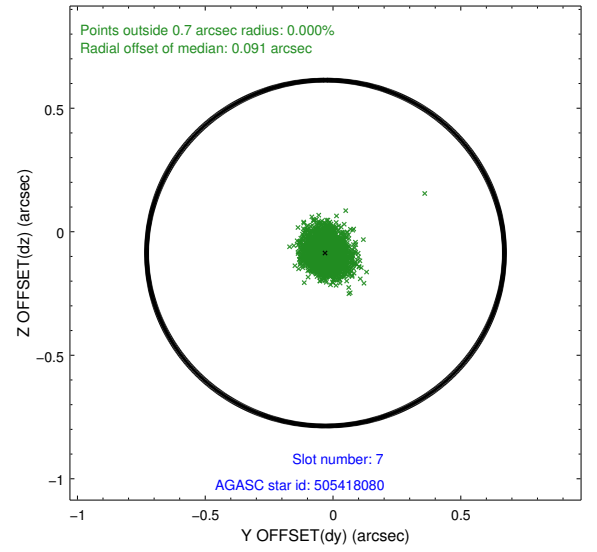
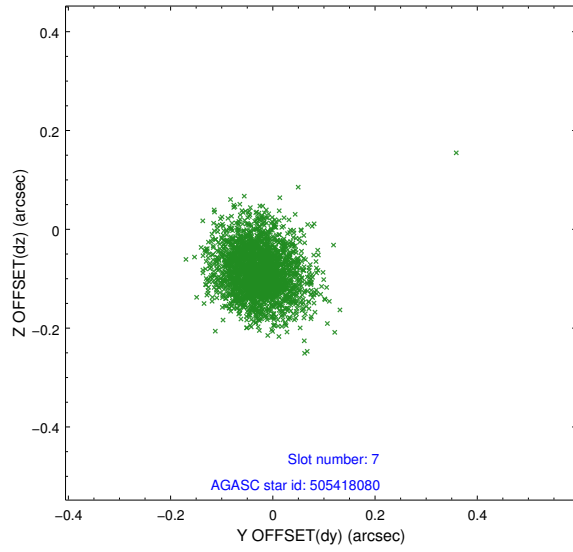
2.4.3 Slot 5



2.4.4 Slot 6

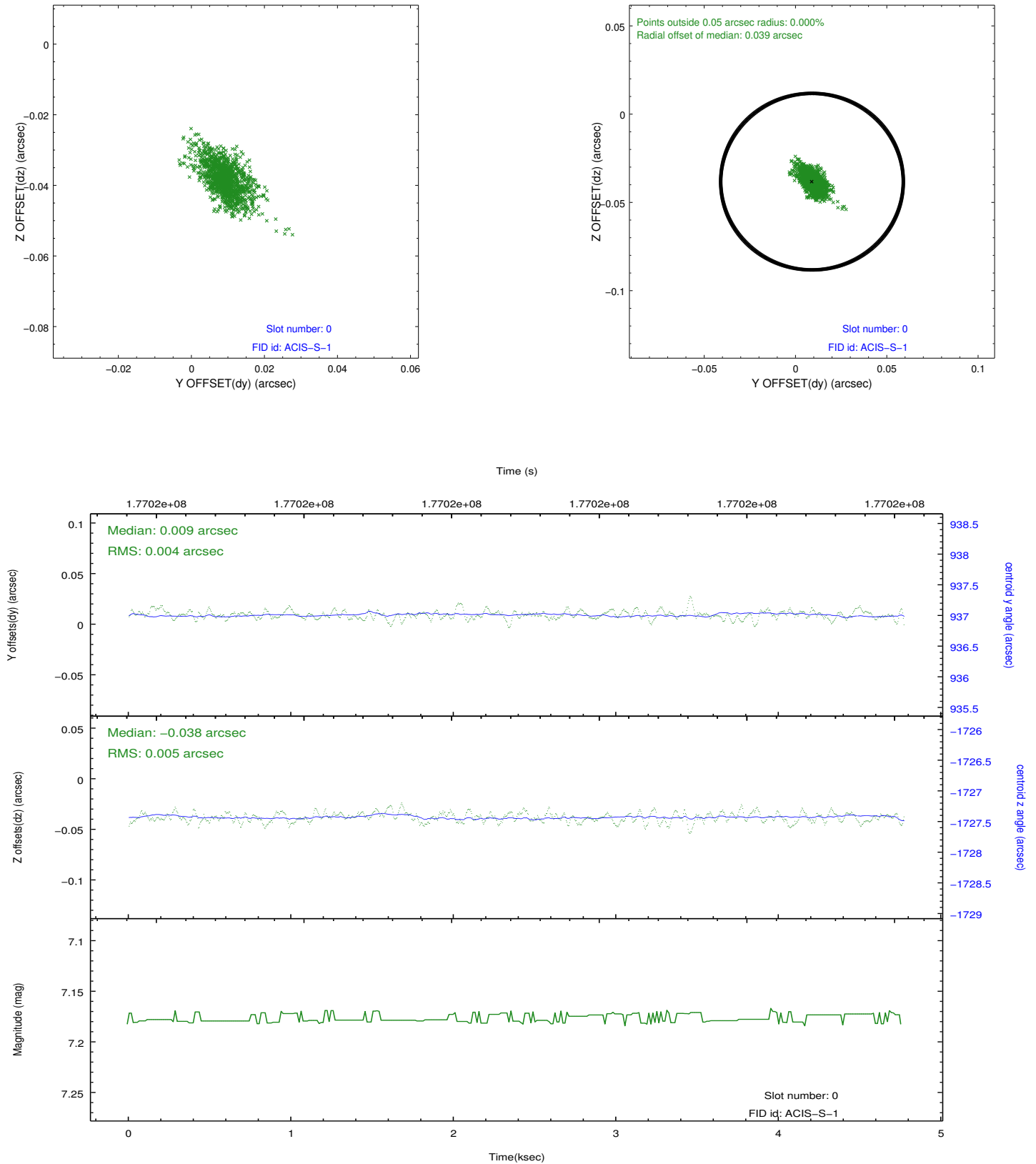


2.4.5 Slot 7

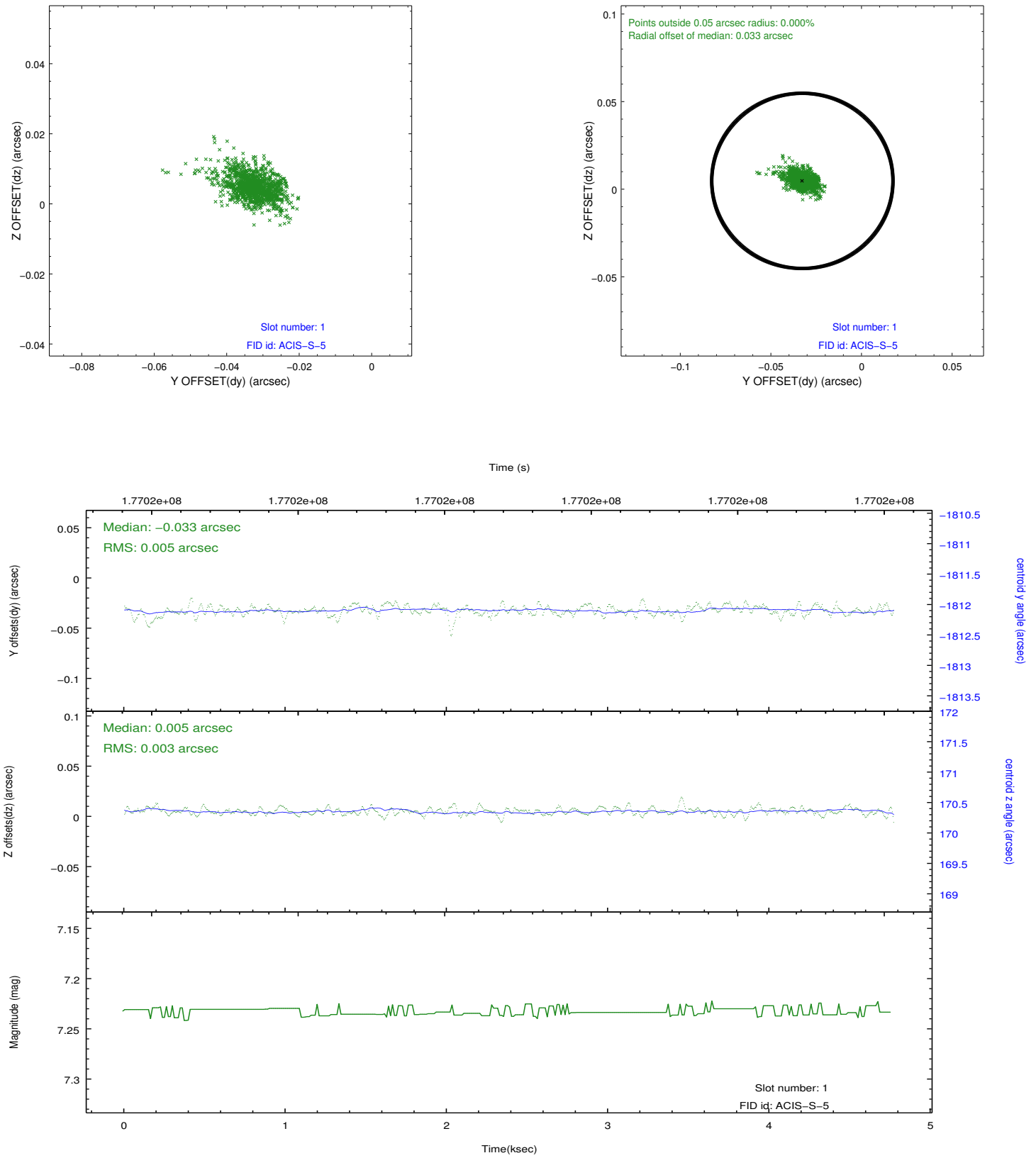


2.5 FID Slots

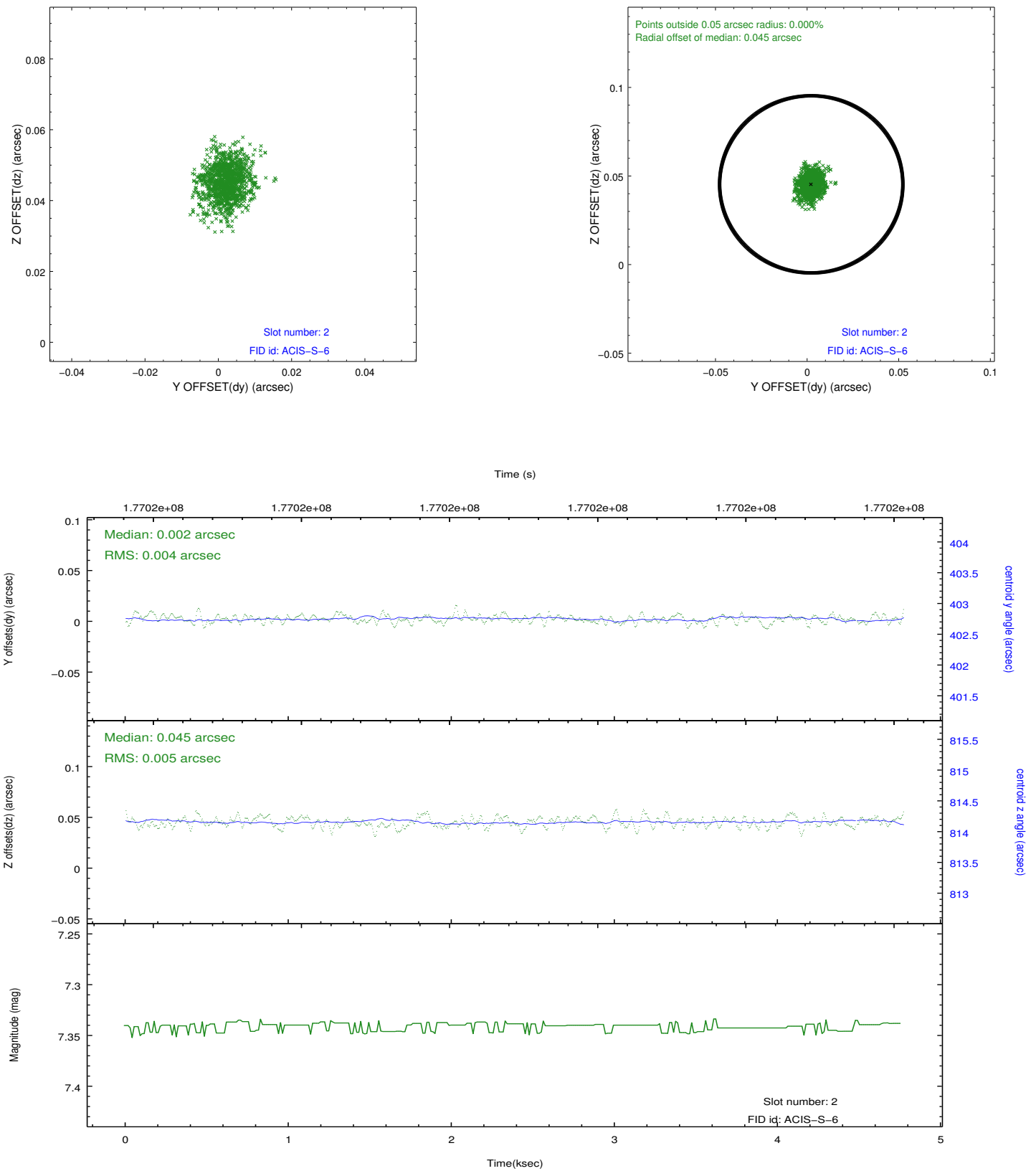
2.5.1 Slot 0



2.5.2 Slot 1



2.5.3 Slot 2



A Summary

A.1 Status

V&V Scientist	Jen Lauer
V&V Date (YYYY-MM-DD)	2012.11.28
V&V Edition	1
V&V Disposition and Status	OK
V&V Charge Time	4.764

A.2 Comments