

V&V Reference Report

L2 ASCDS Version : 7.6.8

Observation 3933 - L2 Version 002
Chandra X-Ray Center

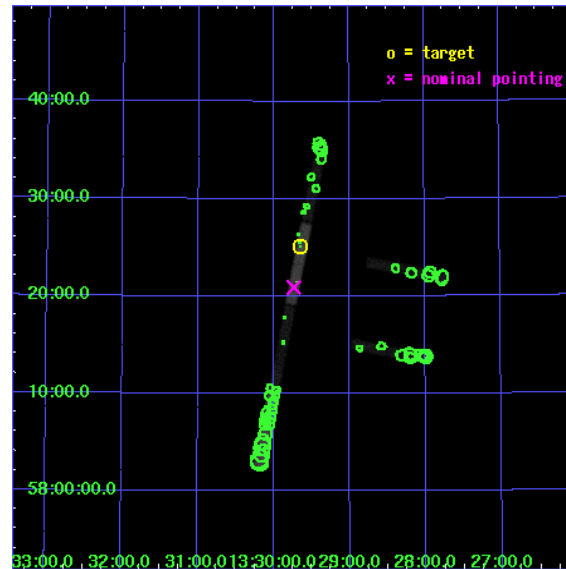
L2 Processing Date : Oct 10 2006

Contents

1	Front	2
2	OBI	3
2.1	OBI	3
2.1.1	Images	3
2.1.2	Bias	3
2.1.3	Parameters	4
2.1.4	Events	4
2.2	Compared Parameters	5
2.3	Aspect	6
2.4	Star Slots	9
2.4.1	Slot 3	9
2.4.2	Slot 4	10
2.4.3	Slot 5	11
2.4.4	Slot 6	12
2.4.5	Slot 7	13
2.5	FID Slots	14
2.5.1	Slot 0	14
2.5.2	Slot 1	15
2.5.3	Slot 2	16
3	Point Sources	17
A	Summary	18
A.1	Status	18
A.2	Comments	18

1 Front

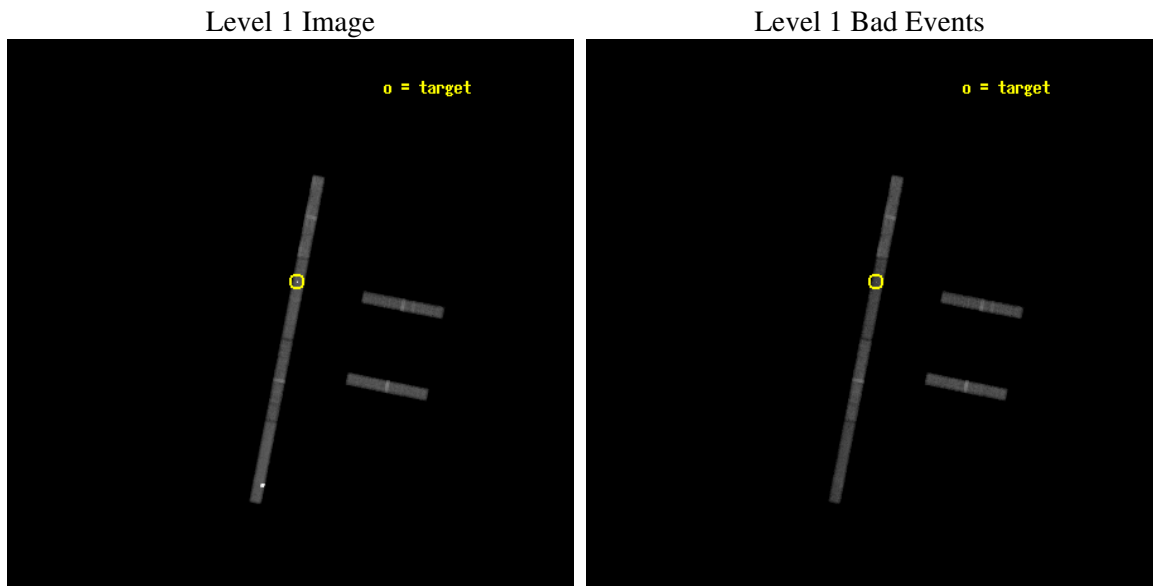
seq_num	600307
obs_id	3933
title	PROBING THE SPECTRAL VARIABILITY OF THE ULTRALUMINOUS X-RAY SOURCE NGC 5204 X-1
observer	Dr Timothy Roberts
object	NGC 5204 X-1
dtcycle	0
cycle	P
ra_targ	202.410833
dec_targ	58.418333
ra_nom	202.43353943809
dec_nom	58.348649530478
roll_nom	281.1929459731
revision	3
ontime	48937.535006493
livetime	46227.294754055
ontime2	48936.052956402
ontime3	48936.793996394
ontime5	48936.793966502
ontime6	48932.945350319
ontime7	48937.535006493
ontime8	48937.535006493
l2events	77044



2 OBI

2.1 OBI

2.1.1 Images



2.1.2 Bias

Chip 2

Chip 3

Chip 5



Chip 6

Chip 7

Chip 8



2.1.3 Parameters

obi_num	0
ascdsver	7.6.9
caldbver	3.2.3
date	2006-10-10T21:32:25
revision	3

sched_exp_time	48796.519000
ontime	49754.296304524
ontime2	49750.591184258
ontime3	49752.814254433
ontime5	49752.814254433
ontime6	49748.368114144
ontime7	49754.296304524
ontime8	49754.296304524
l1events	432357

2.1.4 Events

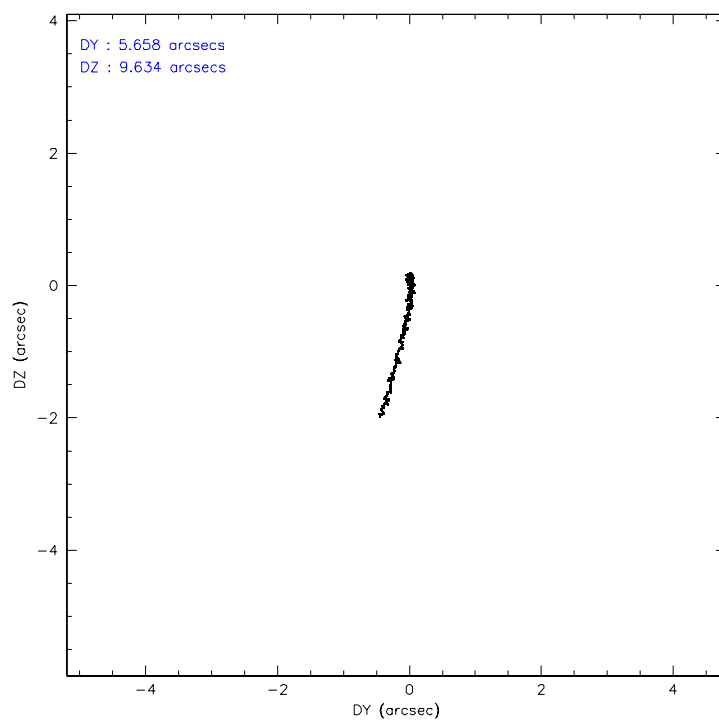
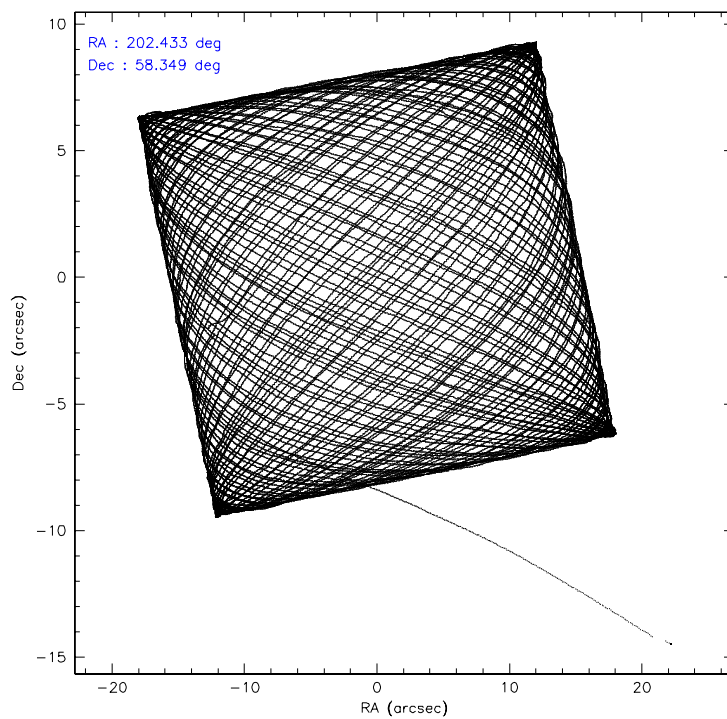
	ccd 2	ccd 3	ccd 5	ccd 6	ccd 7	ccd 8
level 1 events	58389	51943	125456	54272	69081	73216
rejected events	52352	46539	36435	48503	35343	60727
rejected %	89%	89%	29%	89%	51%	82%

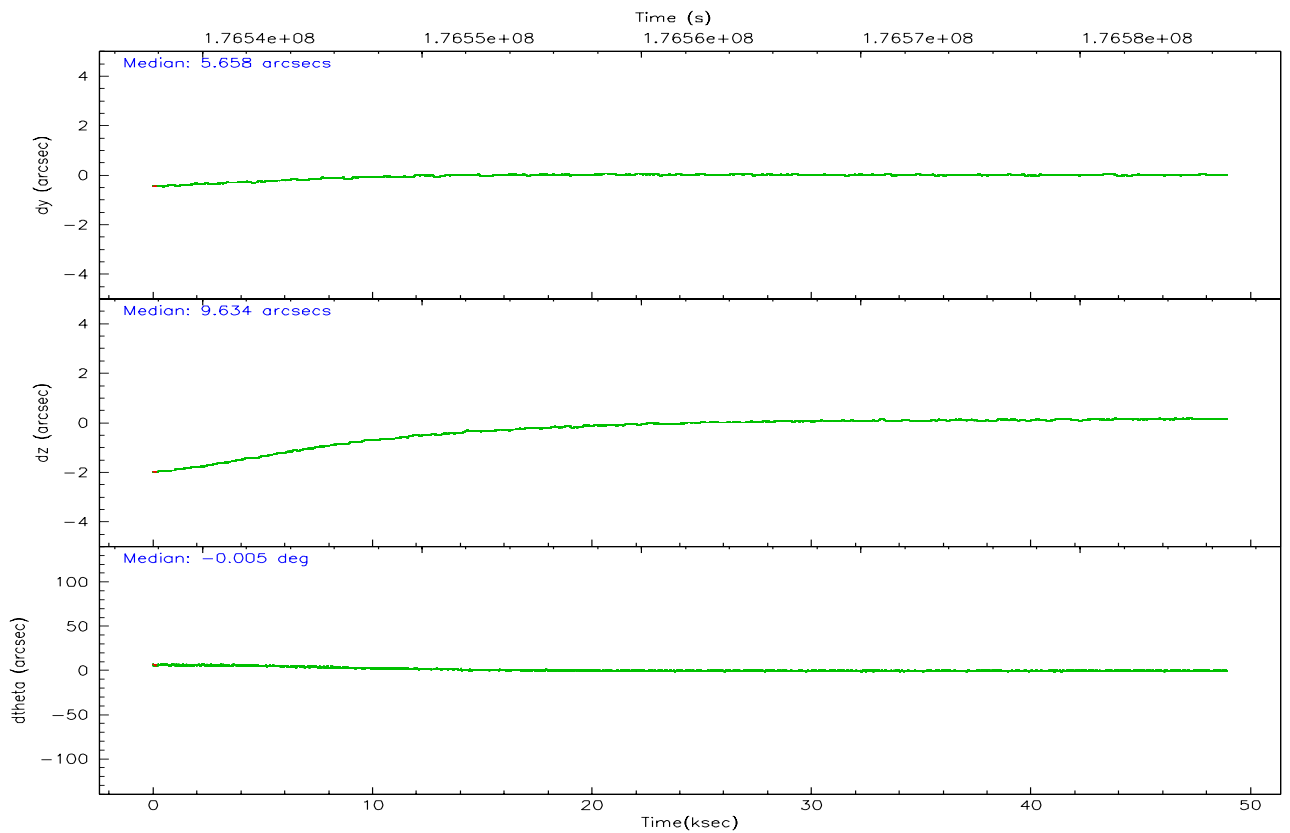
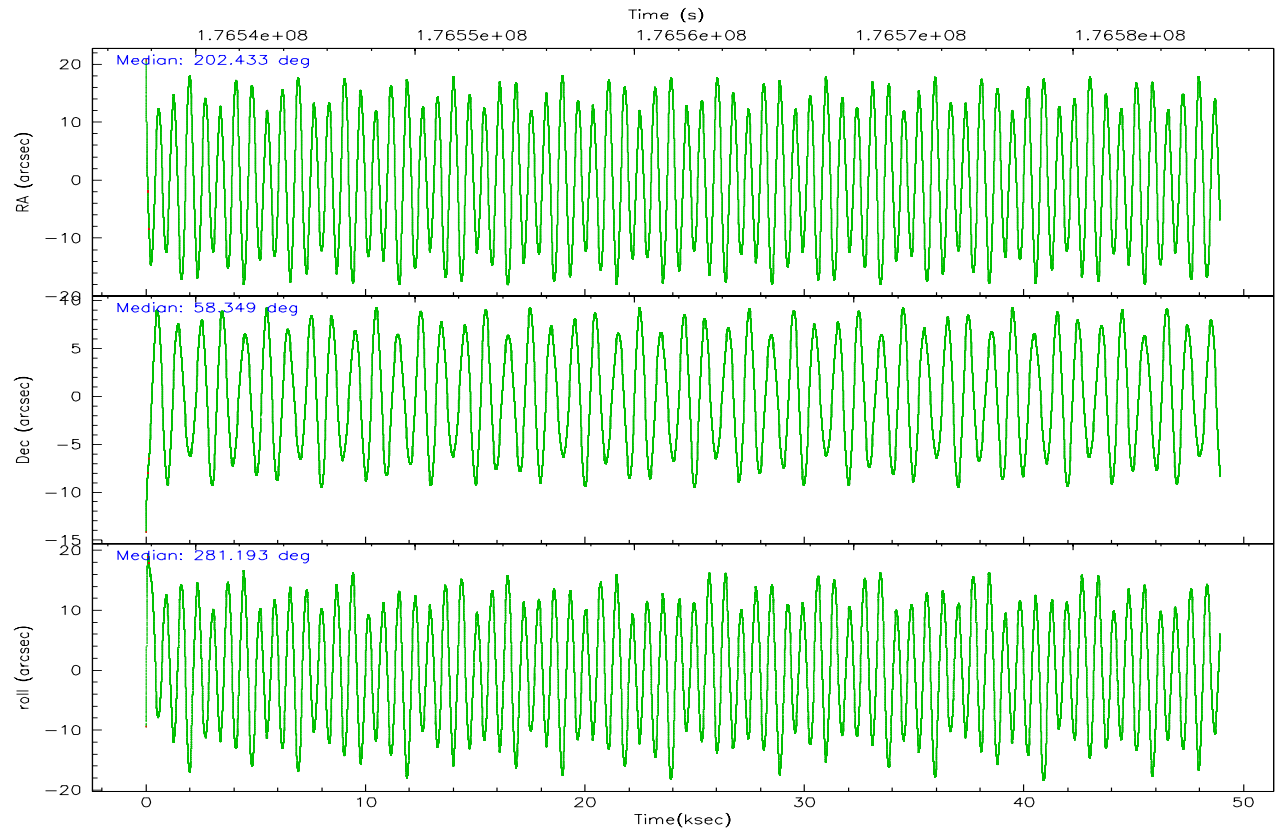
	ccd 2	ccd 3	ccd 5	ccd 6	ccd 7	ccd 8
grade 0 events	2175	1963	47446	1963	5600	3307
	3%	3%	37%	3%	8%	4%
grade 1 events	13	14	275	13	62	22
	0%	0%	0%	0%	0%	0%
grade 2 events	1074	859	24466	994	8358	2501
	1%	1%	19%	1%	12%	3%
grade 3 events	946	954	1268	928	3247	1429
	1%	1%	1%	1%	4%	1%
grade 4 events	942	833	2047	952	3220	1361
	1%	1%	1%	1%	4%	1%
grade 5 events	1734	1650	3390	1939	4379	2233
	2%	3%	2%	3%	6%	3%
grade 6 events	1002	876	15273	1020	13750	4080
	1%	1%	12%	1%	19%	5%
grade 7 events	50503	44794	31291	46463	30465	58283
	86%	86%	24%	85%	44%	79%

2.2 Compared Parameters

Parameter	Planned	Actual	Parameter	Planned	Actual
Instrument	ACIS	ACIS	Obspar format version number	6	6
Detector	ACIS-235678	ACIS-235678	Obspar file type	PREDICTED	ACTUAL
Grating	NONE	NONE	Obspar update status	NONE	UPDATED
Data mode	FAINT	FAINT	On-chip summing requested	N	N
Observation mode	POINTING	POINTING	Subarray requested	1/8	1/8
Pointing RA	202.398816	202.4335394380895	Subarray start row	0	449
Pointing Dec	58.368878	58.348649530478	Subarray row count	1024	128
Pointing Roll	281.065879	281.1929459730976	Alternating exposures requested	N	N
SIM focus pos (mm)	-0.684267	-0.6828225247311905	Primary exposure time	0.000000	0.7
SIM defocus (mm)	0	0.001444936568705701			
SIM translation stage pos (mm)	-190.132523	-190.1425803651734			
SIM translation stage offset (mm)	0	0.01005778216563158			
Observation start time	176537893.184000	176536707.79784			
Observation start date	2003-08-06T06:17:09	2003-08-06T05:58:27			
Observation end time	176586690.184000	176587004.54999			
Observation end date	2003-08-06T19:50:26	2003-08-06T19:56:44			
Read mode	TIMED	TIMED			

2.3 Aspect



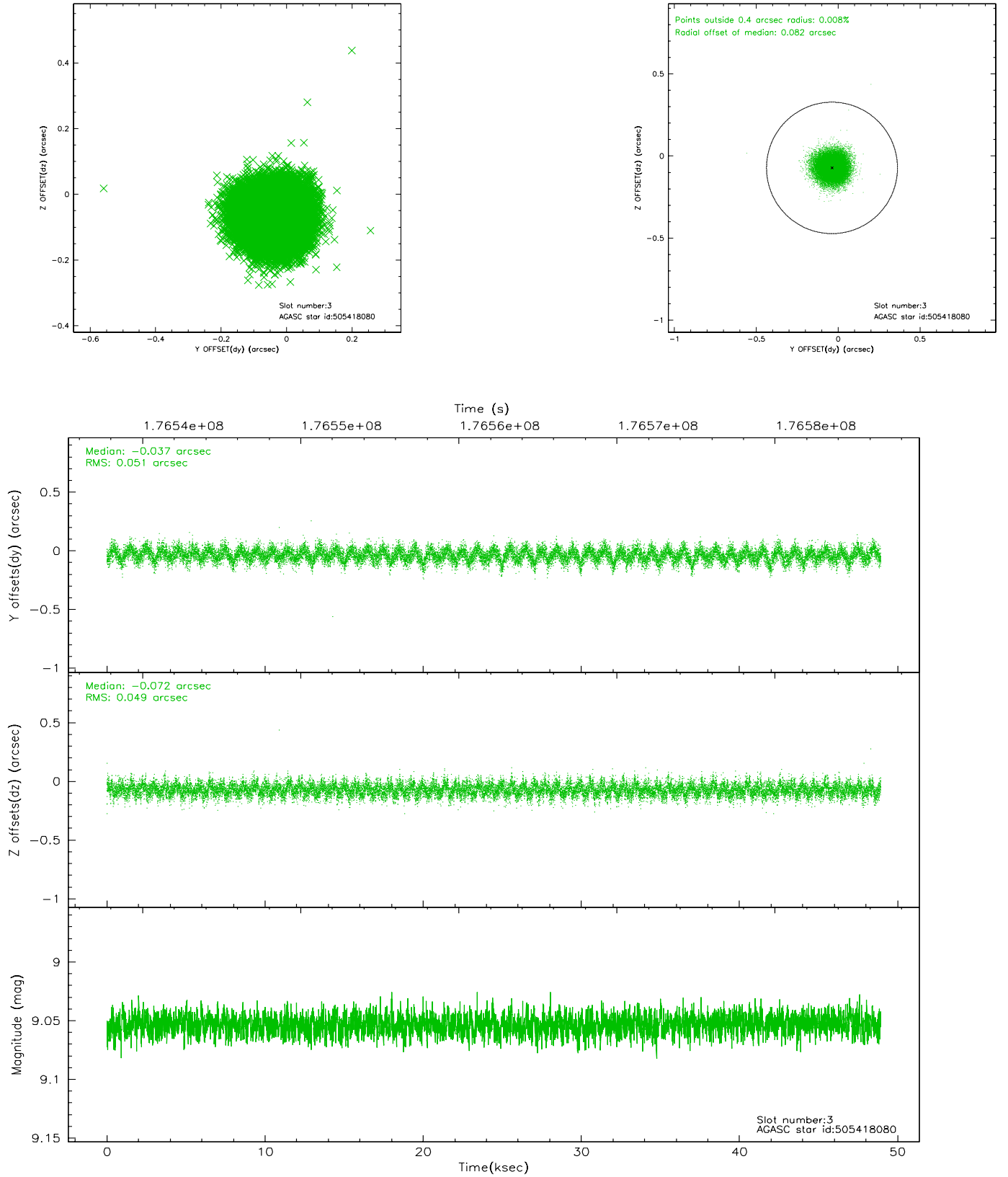


Slot Statistics

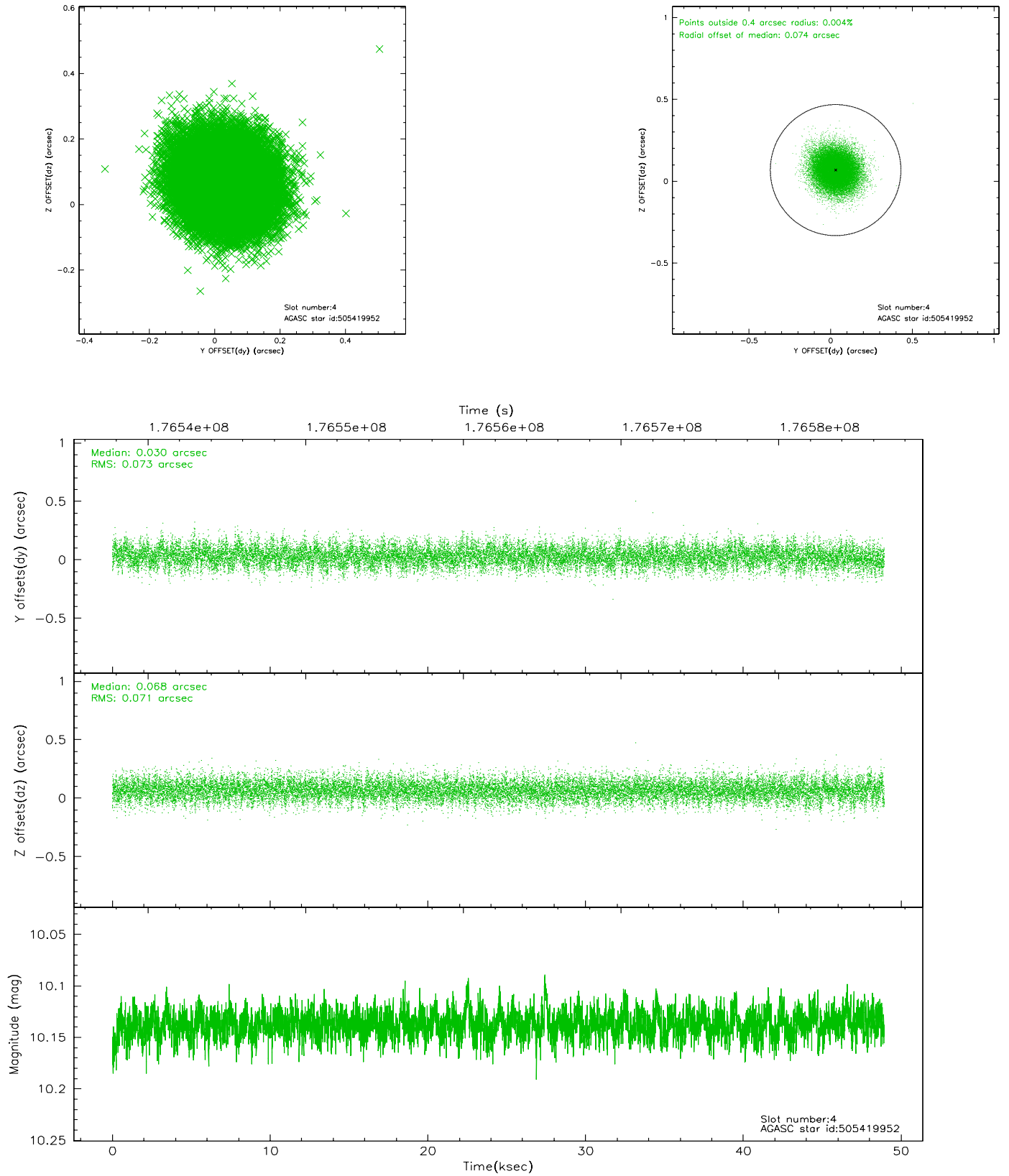
slot	status	id	mag	n_pts	med_dy	med_dz	dr1	dr2	ra	dec	mean_y	mean_z
0	FID	ACIS-S-1	7.18	11934	-0.009	0.020	0.012	0.056	0.000000	0.000000	937.67	-1726.14
1	FID	ACIS-S-5	7.23	11933	-0.038	-0.003	0.013	0.042	0.000000	0.000000	-1811.33	171.48
2	FID	ACIS-S-6	7.35	11934	0.024	-0.006	0.013	0.024	0.000000	0.000000	403.32	815.36
3	GUIDE	505418080	9.05	23852	-0.037	-0.072	0.075	0.123	201.533017	58.898788	-2191.04	-1211.83
4	GUIDE	505419952	10.14	23857	0.030	0.068	0.109	0.176	201.880700	58.804366	-1727.33	-646.31
5	GUIDE	505421936	8.86	23855	-0.029	0.051	0.066	0.109	201.854843	57.887820	1496.03	-1353.02
6	GUIDE	505421968	8.18	23868	0.034	-0.007	0.057	0.093	202.022601	58.209270	425.55	-810.05
7	GUIDE	505422344	8.62	23865	0.004	-0.037	0.060	0.098	202.767077	57.846963	1978.03	332.35

2.4 Star Slots

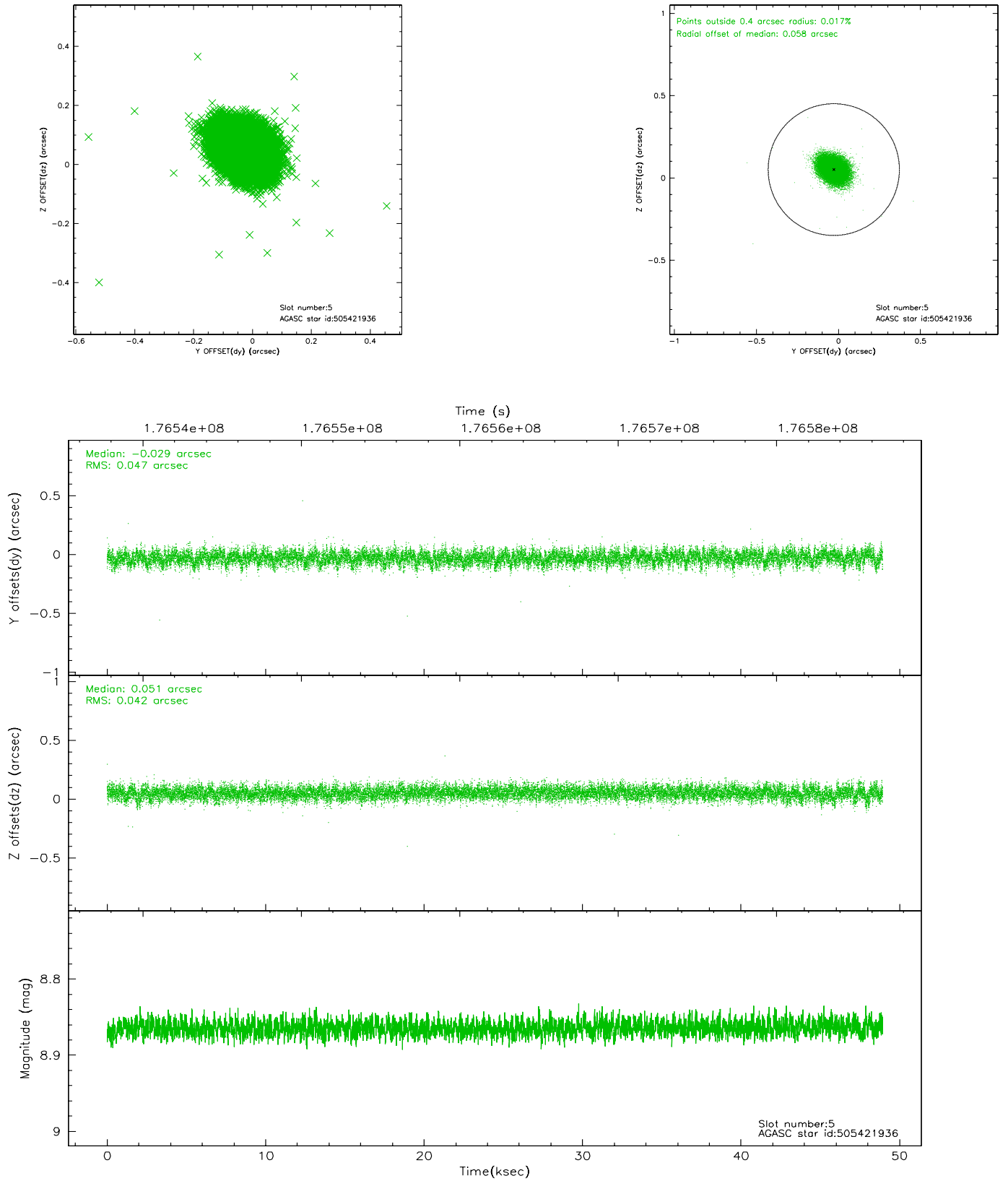
2.4.1 Slot 3



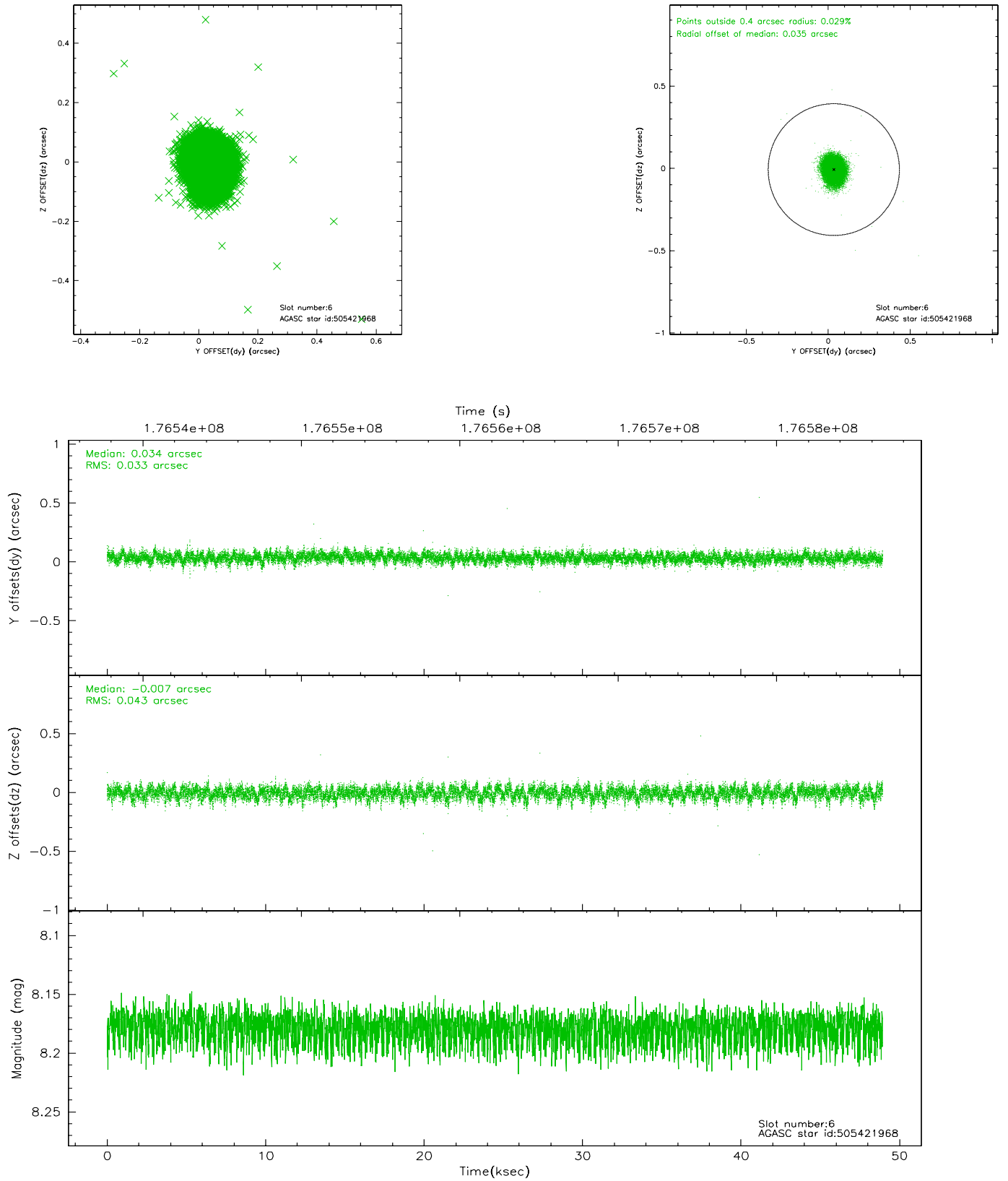
2.4.2 Slot 4



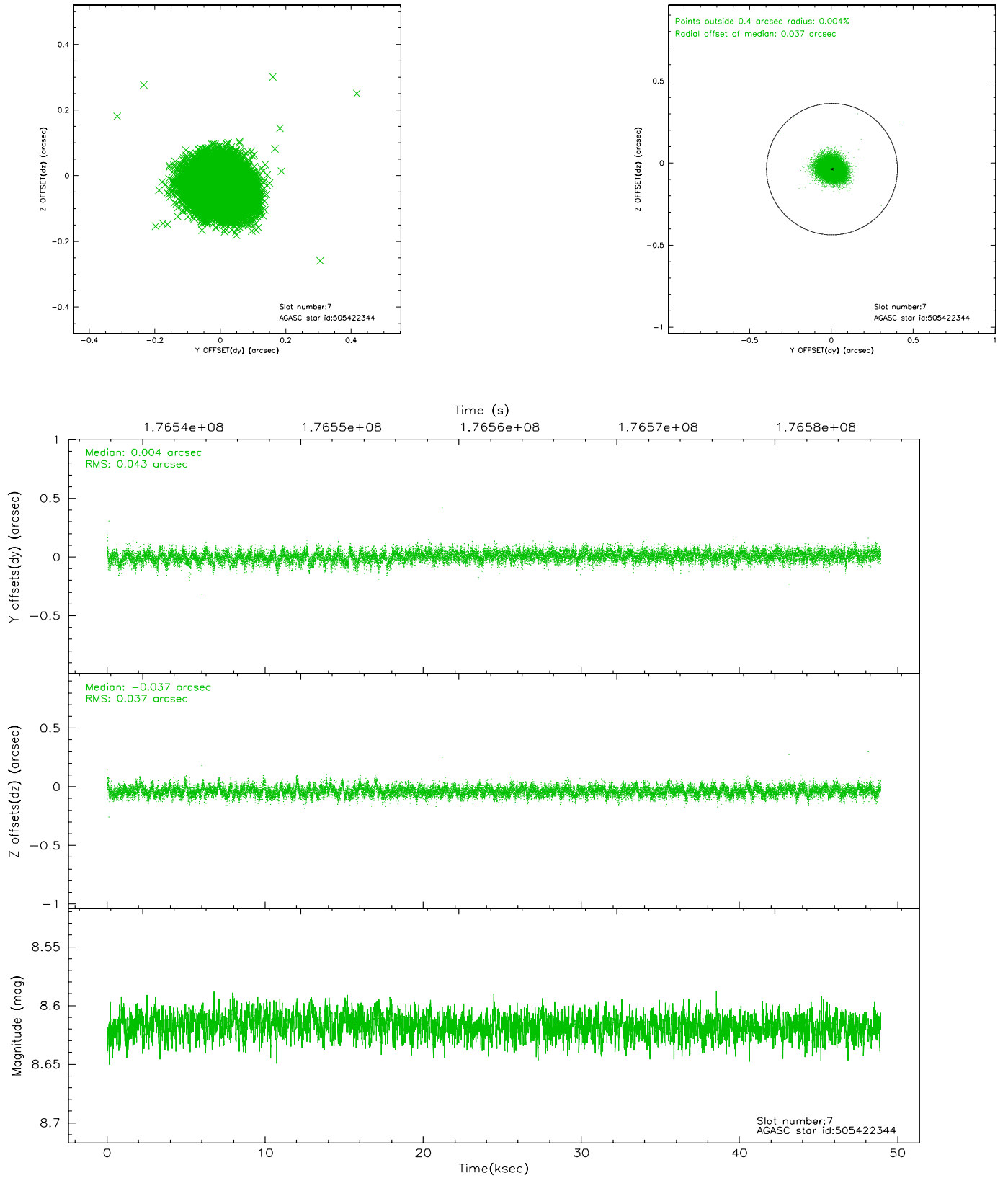
2.4.3 Slot 5



2.4.4 Slot 6

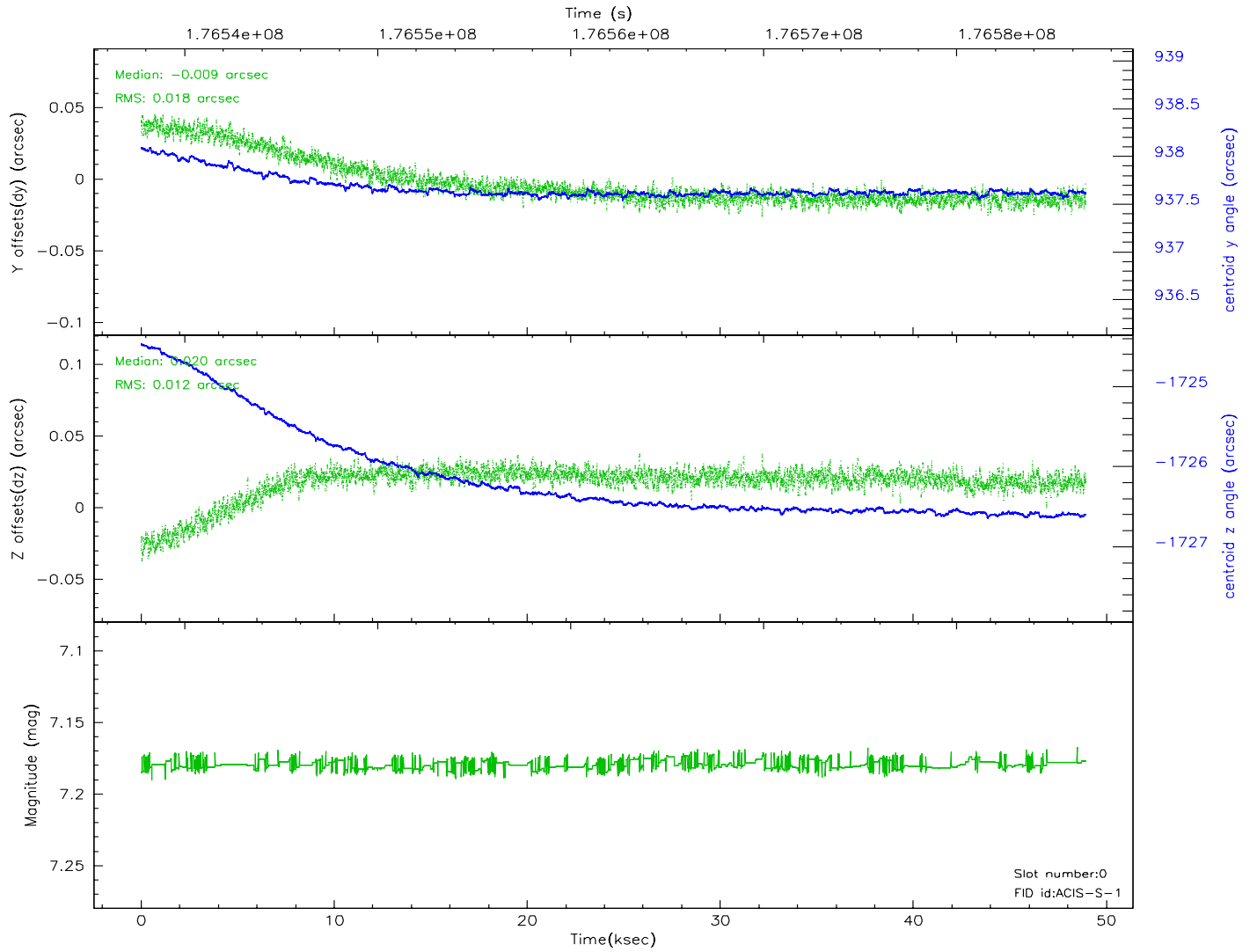
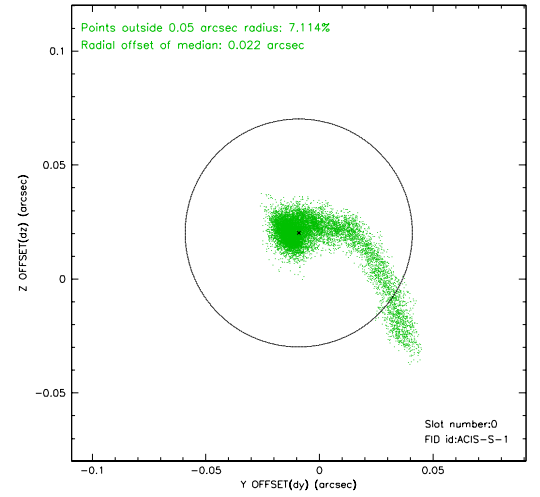
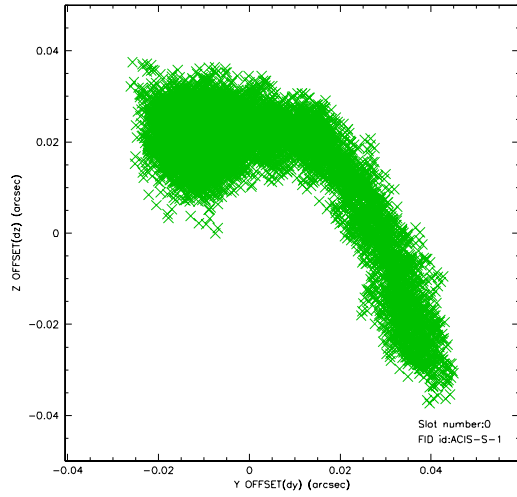


2.4.5 Slot 7

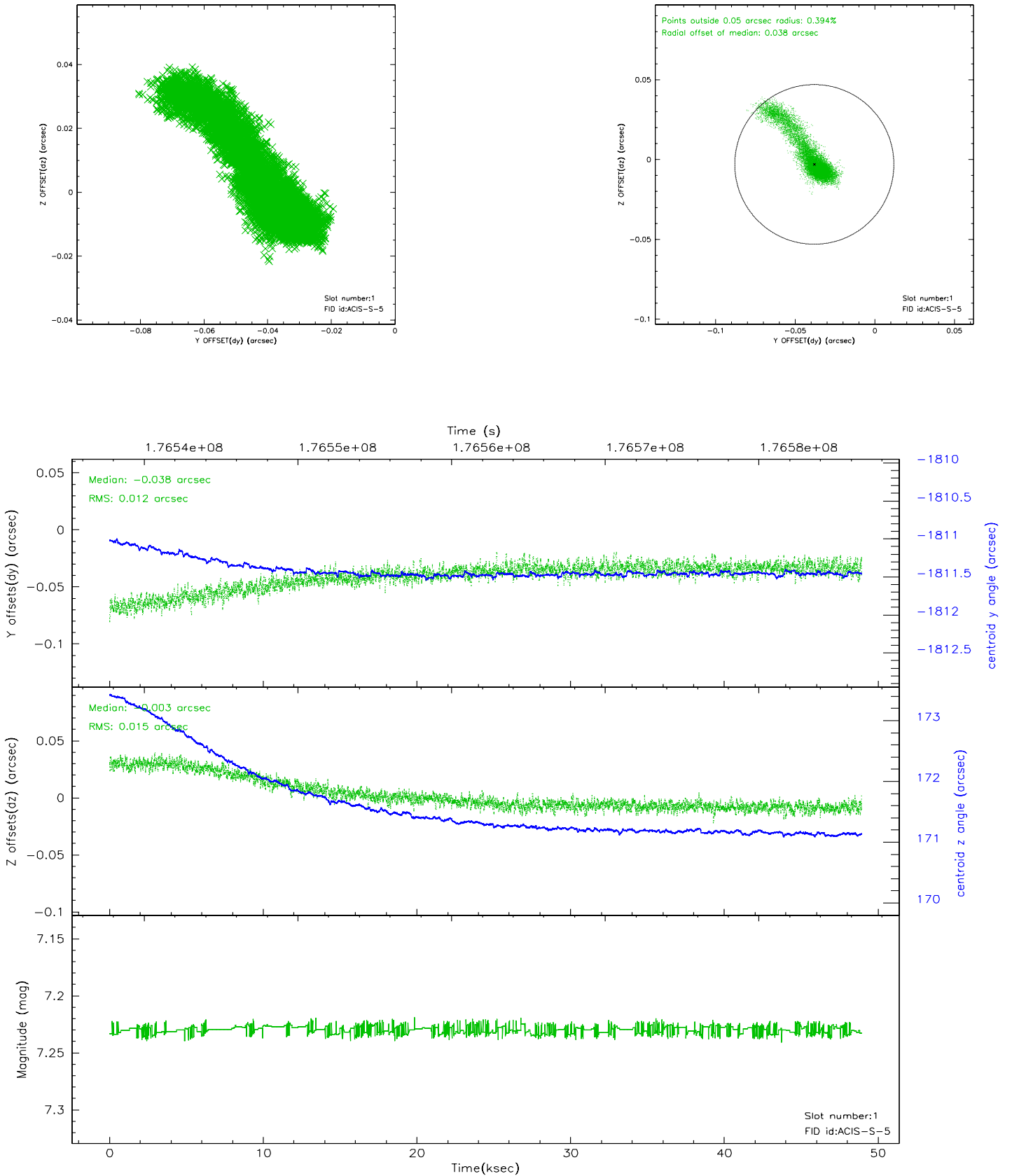


2.5 FID Slots

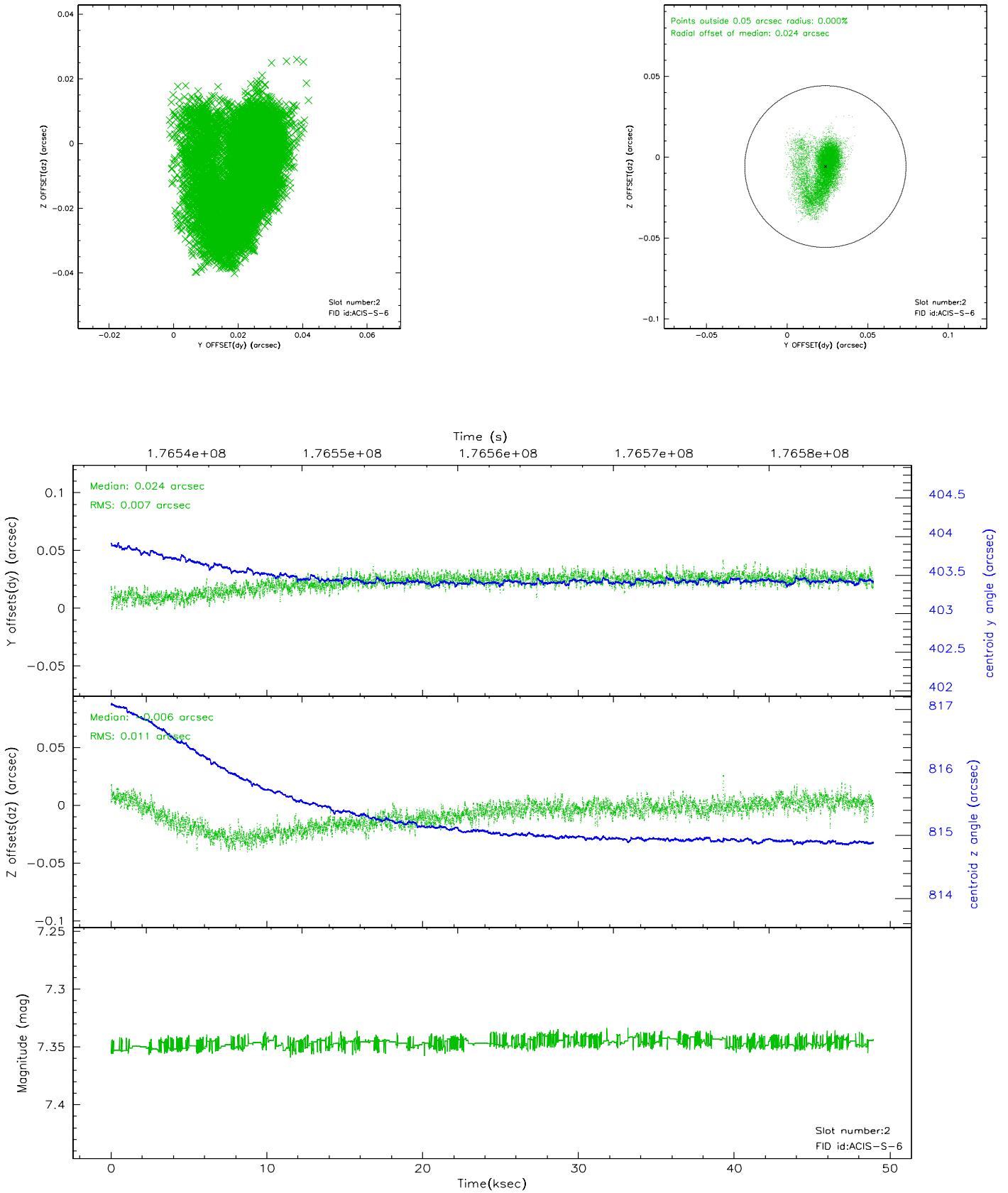
2.5.1 Slot 0



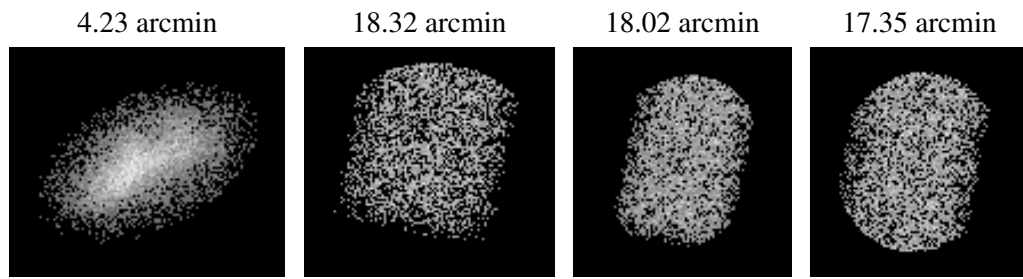
2.5.2 Slot 1



2.5.3 Slot 2



3 Point Sources



A Summary

A.1 Status

V&V Scientist	Beth Sundheim
V&V Date (YYYY-MM-DD)	2006.10.11
V&V Edition	1
V&V Disposition and Status	OK
V&V Charge Time	48.937

A.2 Comments

One CCD bias map was incomplete because of data gaps in telemetry. The bias map for chip 5 was reconstructed using scaled data from a comparable bias map for another observation to fill the data gaps.