

# V&V Reference Report

## L2 ASCDS Version : 7.6.8

Observation 3926 - L2 Version 001  
Chandra X-Ray Center

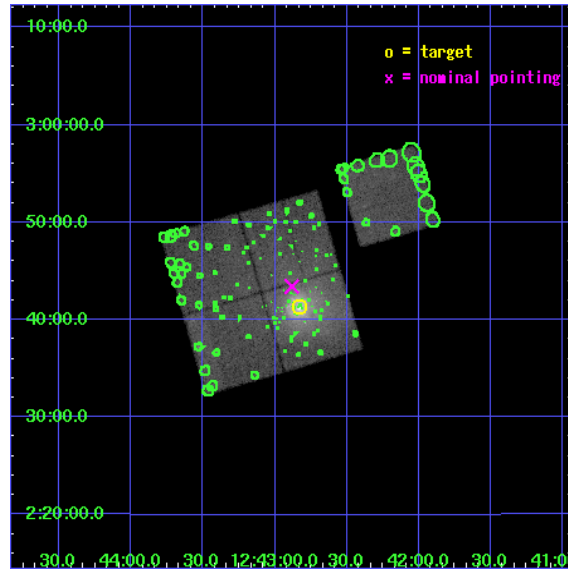
L2 Processing Date : Jul 27 2006

## Contents

<b>1</b>	<b>Front</b>	<b>2</b>
<b>2</b>	<b>OBI</b>	<b>3</b>
2.1	OBI . . . . .	3
2.1.1	Images . . . . .	3
2.1.2	Bias . . . . .	3
2.1.3	Parameters . . . . .	4
2.1.4	Events . . . . .	4
2.2	Compared Parameters . . . . .	5
2.3	Aspect . . . . .	6
2.4	Star Slots . . . . .	9
2.4.1	Slot 3 . . . . .	9
2.4.2	Slot 4 . . . . .	10
2.4.3	Slot 5 . . . . .	11
2.4.4	Slot 6 . . . . .	12
2.5	FID Slots . . . . .	13
2.5.1	Slot 0 . . . . .	13
2.5.2	Slot 1 . . . . .	14
2.5.3	Slot 2 . . . . .	15
<b>3</b>	<b>Point Sources</b>	<b>16</b>
<b>A</b>	<b>Summary</b>	<b>17</b>
A.1	Status . . . . .	17
A.2	Comments . . . . .	17

# 1 Front

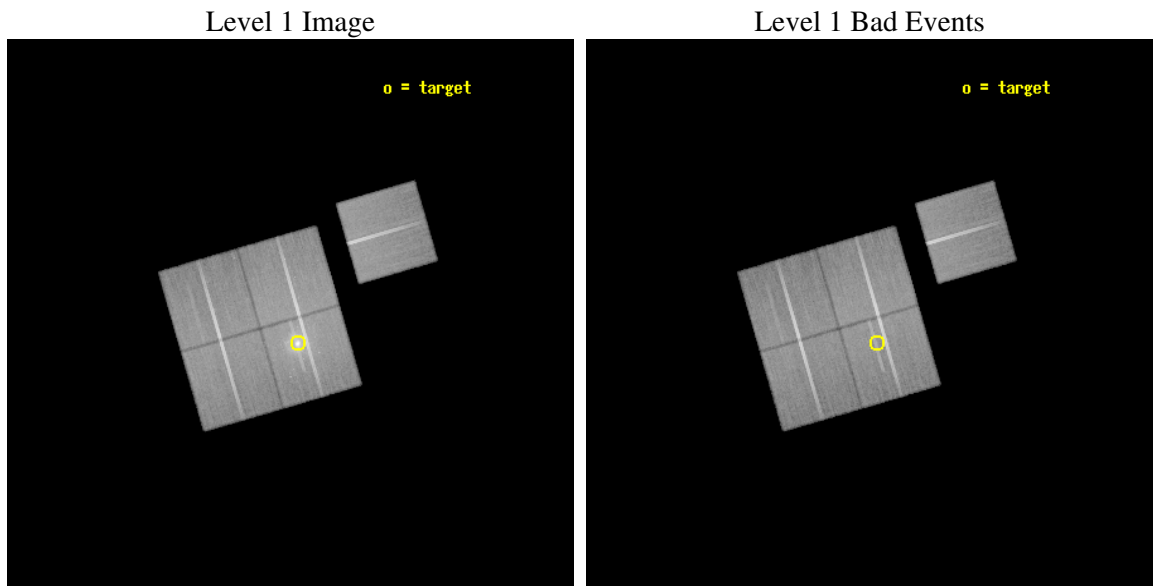
seq_num	600300
obs_id	3926
title	EXPLORING THE COOLING FLOW RIDDLE: THE NATURE AND EFFECT OF NUCLEAR OUTBURSTS IN THE ELLIPTICAL GALAXY NGC4636
observer	Dr. Christine Jones
object	NGC4636
dtcycle	0
cycle	P
ra_targ	190.708333
dec_targ	2.688056
ra_nom	190.72066390978
dec_nom	2.7236158153574
roll_nom	73.83410623211
revision	3
ontime	75689.435973316
livetime	74700.497770573
ontime0	75695.717883974
ontime1	75692.576913744
ontime2	75680.012952924
ontime3	75689.435973316
ontime6	75695.71787405
l2events	308669



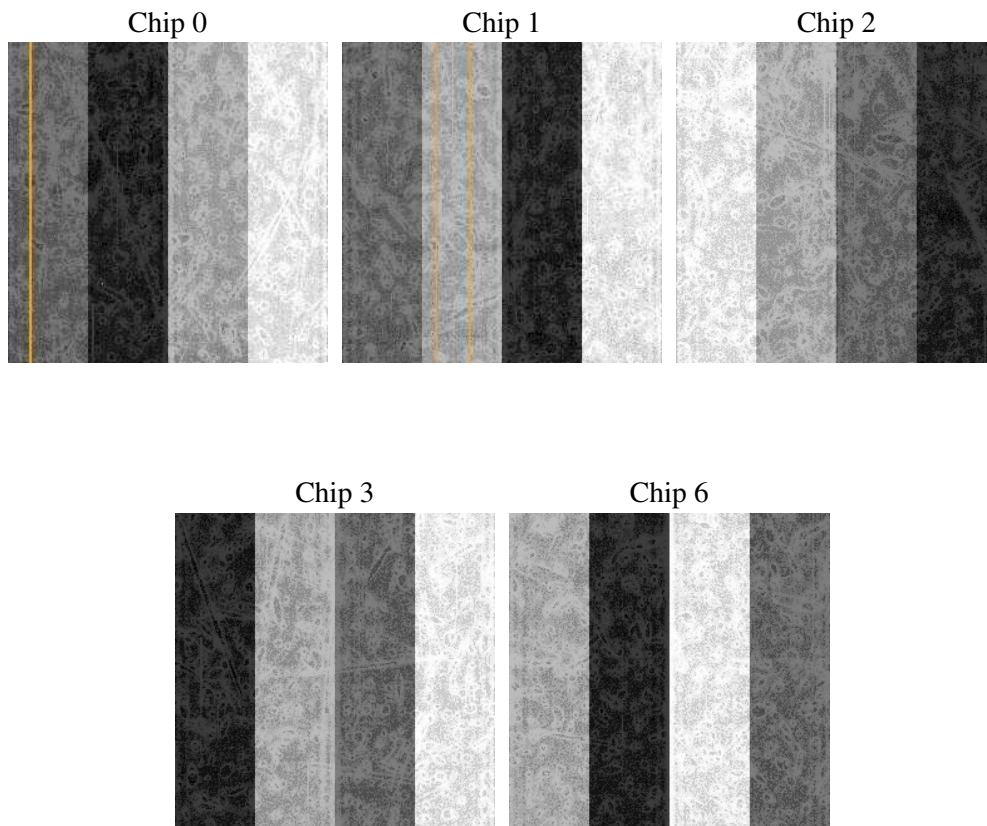
## 2 OBI

### 2.1 OBI

#### 2.1.1 Images



#### 2.1.2 Bias



### 2.1.3 Parameters

obi_num	0
ascdsver	7.6.8
caldsver	3.2.2
date	2006-07-27T23:48:10
revision	3

sched_exp_time	75583.000000
ontime	75695.19268918
ontime0	75701.474599838
ontime1	75698.333629608
ontime2	75685.769668788
ontime3	75695.19268918
ontime6	75701.474589914
l1events	2195573

### 2.1.4 Events

	ccd 0	ccd 1	ccd 2	ccd 3	ccd 6
level 1 events	396413	399064	459577	522708	417811
rejected events	347143	345560	401259	383302	368714
rejected %	87%	86%	87%	73%	88%

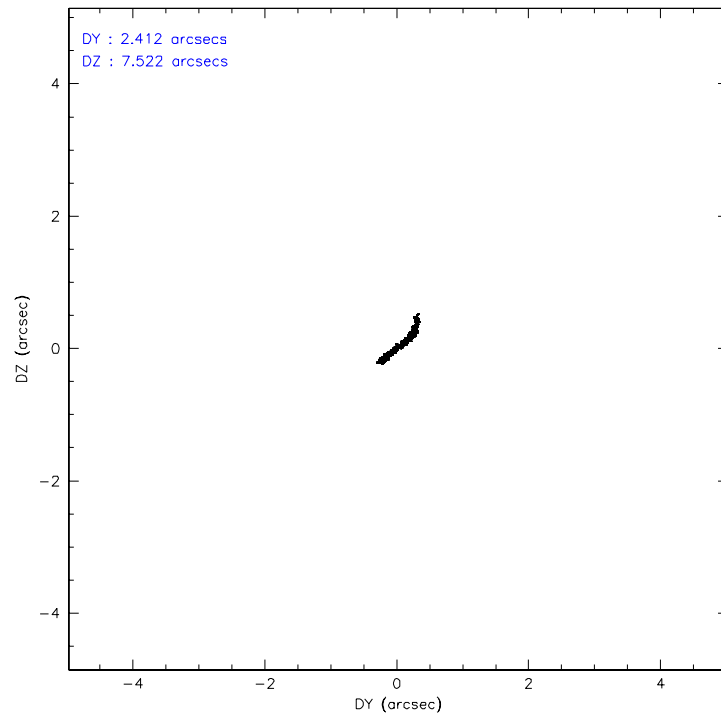
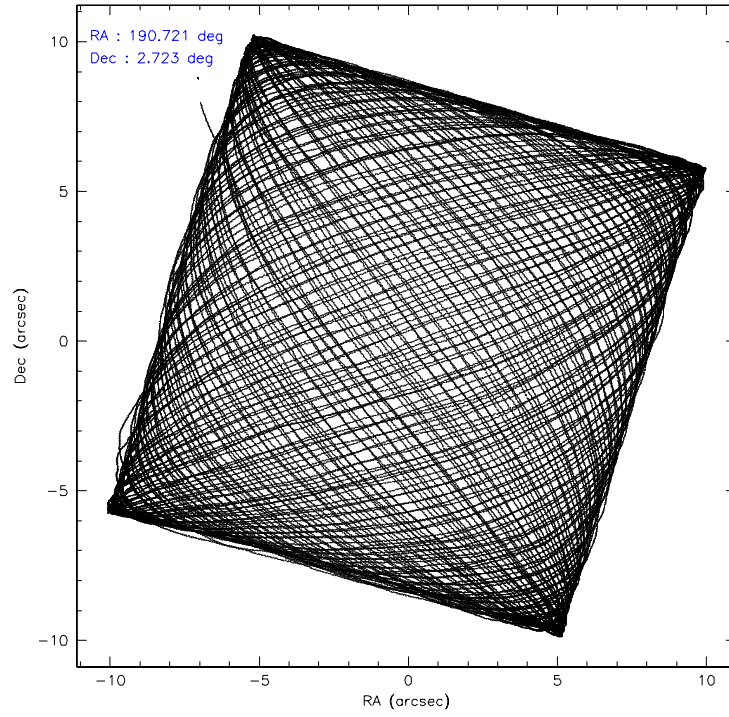
	ccd 0	ccd 1	ccd 2	ccd 3	ccd 6
grade 0 events	21829	23700	30314	103738	21188
	5%	5%	6%	19%	5%
grade 1 events	236	198	249	548	203
	0%	0%	0%	0%	0%
grade 2 events	9941	10183	10726	15149	9302
	2%	2%	2%	2%	2%
grade 3 events	5115	5377	4830	6241	4931
	1%	1%	1%	1%	1%
grade 4 events	4581	5246	4897	6045	4952
	1%	1%	1%	1%	1%
grade 5 events	13973	15064	13435	15944	15470
	3%	3%	2%	3%	3%
grade 6 events	7808	9000	7551	8235	8728
	1%	2%	1%	1%	2%
grade 7 events	332930	330296	387575	366808	353037
	83%	82%	84%	70%	84%

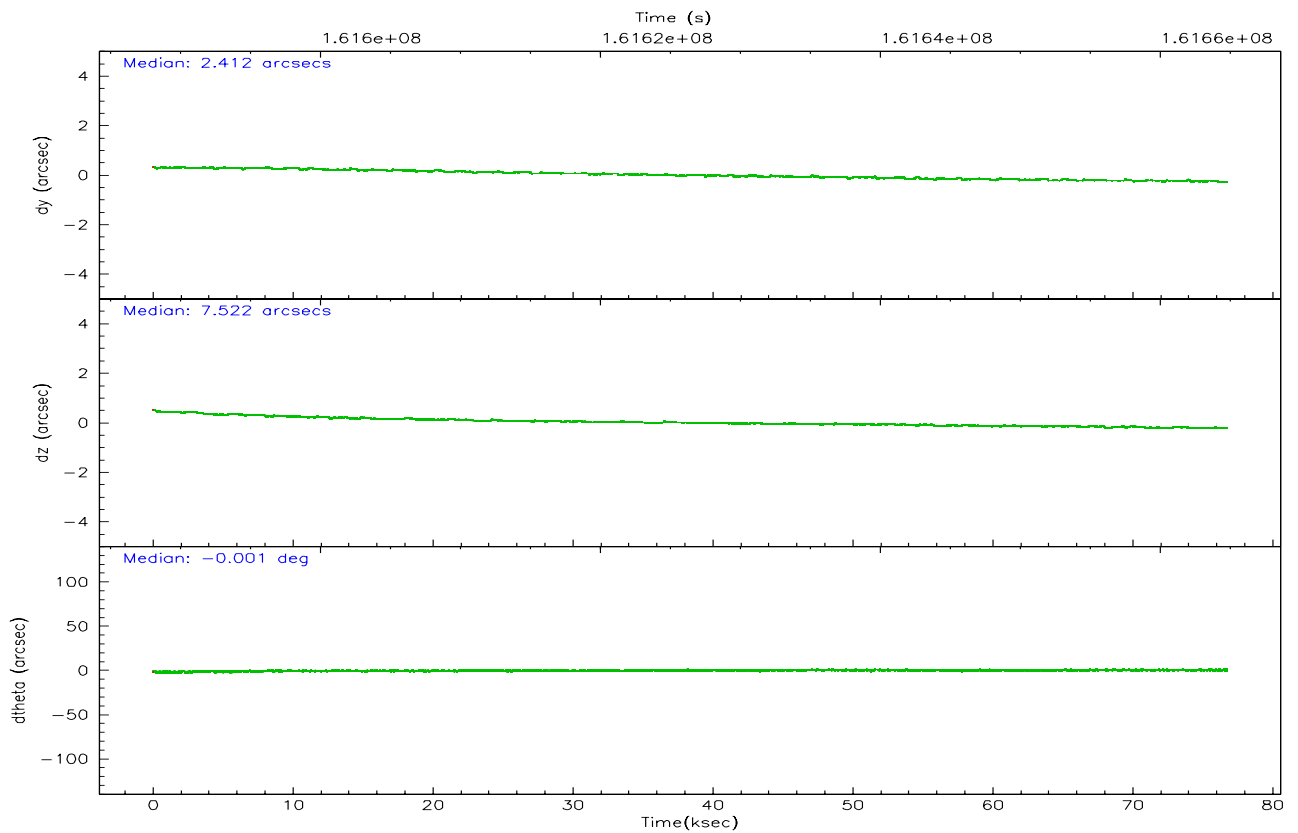
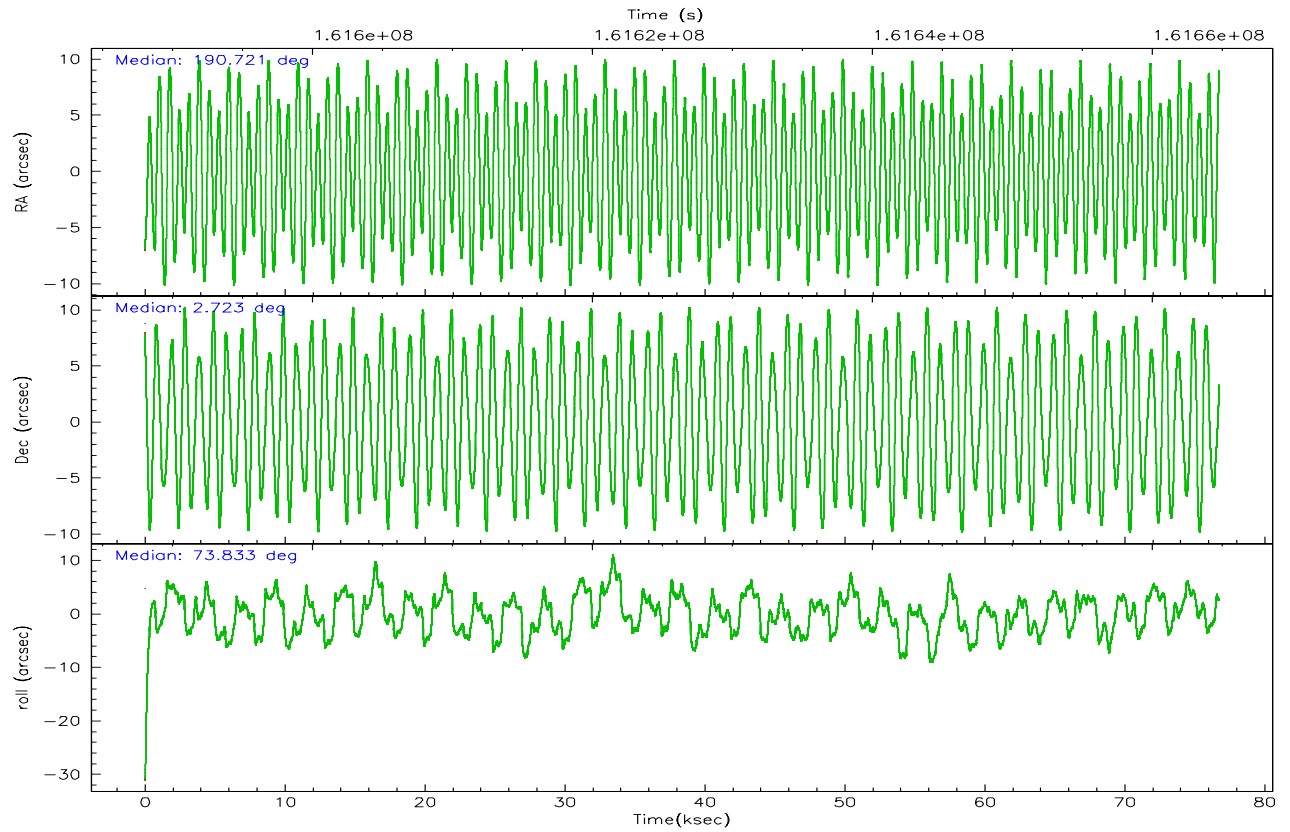


## 2.2 Compared Parameters

Parameter	Planned	Actual	Parameter	Planned	Actual
Instrument	ACIS	ACIS	Obspar format version number	6	6
Detector	ACIS-01236	ACIS-01236	Obspar file type	PREDICTED	ACTUAL
Grating	NONE	NONE	Obspar update status	NONE	UPDATED
Data mode	VFAINT	VFAINT	On-chip summing requested	N	N
Observation mode	POINTING	POINTING	Subarray requested	NONE	NONE
Pointing RA	190.727335	190.7206639097771	Alternating exposures requested	N	N
Pointing Dec	2.697073	2.723615815357401	Primary exposure time	0.000000	3.1
Pointing Roll	73.625105	73.83410623210983			
SIM focus pos (mm)	-0.782348	-0.7809083437167272			
SIM defocus (mm)	0	0.001439871863259334			
SIM translation stage pos (mm)	-225.840463	-225.8433433320239			
SIM translation stage offset (mm)	-7.752	-7.749109670905796			
Observation start time	161589198.184000	161587748.41489			
Observation start date	2003-02-14T05:52:14	2003-02-14T05:29:08			
Observation end time	161664781.184000	161664915.54313			
Observation end date	2003-02-15T02:51:57	2003-02-15T02:55:15			
Read mode	TIMED	TIMED			

## 2.3 Aspect



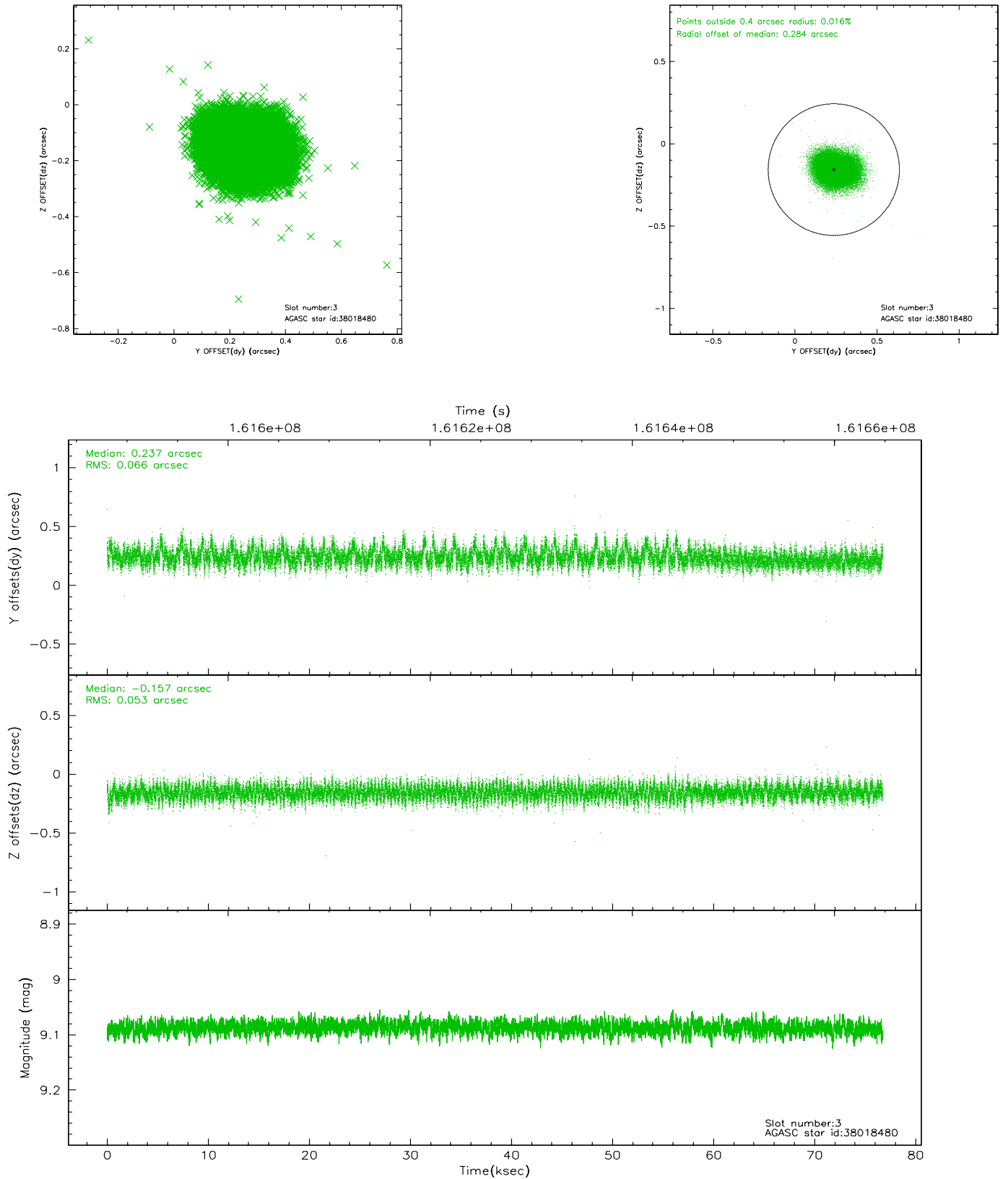


# Slot Statistics

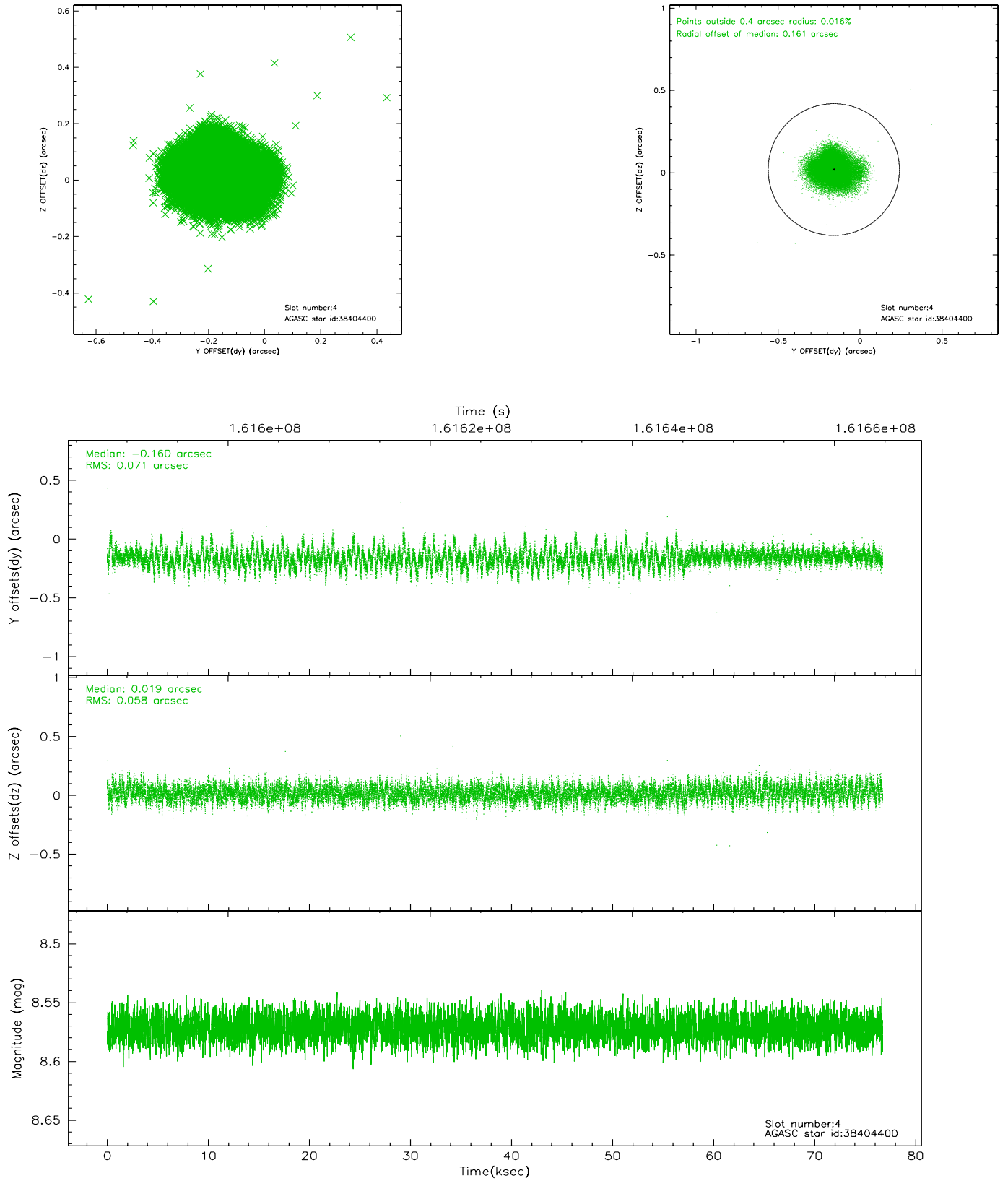
slot	status	id	mag	n_pts	med_dy	med_dz	dr1	dr2	ra	dec	mean_y	mean_z
0	FID	ACIS-I-1	7.23	18720	0.047	-0.011	0.014	0.029	0.000000	0.000000	937.27	-990.07
1	FID	ACIS-I-5	7.22	18720	-0.111	0.082	0.015	0.033	0.000000	0.000000	-1811.01	907.57
2	FID	ACIS-I-6	7.26	18719	-0.024	0.002	0.010	0.015	0.000000	0.000000	402.84	1551.90
3	GUIDE	38018480	9.09	37418	0.237	-0.157	0.088	0.150	190.261944	2.299844	-1843.10	1203.07
4	GUIDE	38404400	8.57	37429	-0.160	0.019	0.097	0.160	190.883800	2.621151	-103.31	-616.64
5	GUIDE	38405600	10.10	37290	0.062	-0.061	0.167	0.288	190.858712	2.900685	836.76	-246.36
6	GUIDE	38407800	10.34	37399	-0.149	0.183	0.222	0.438	191.026784	2.963213	1223.18	-762.39
7	OMITTED		0.00	0	0.000	0.000	0.000	0.000	0.000000	0.000000	0.00	0.00

## 2.4 Star Slots

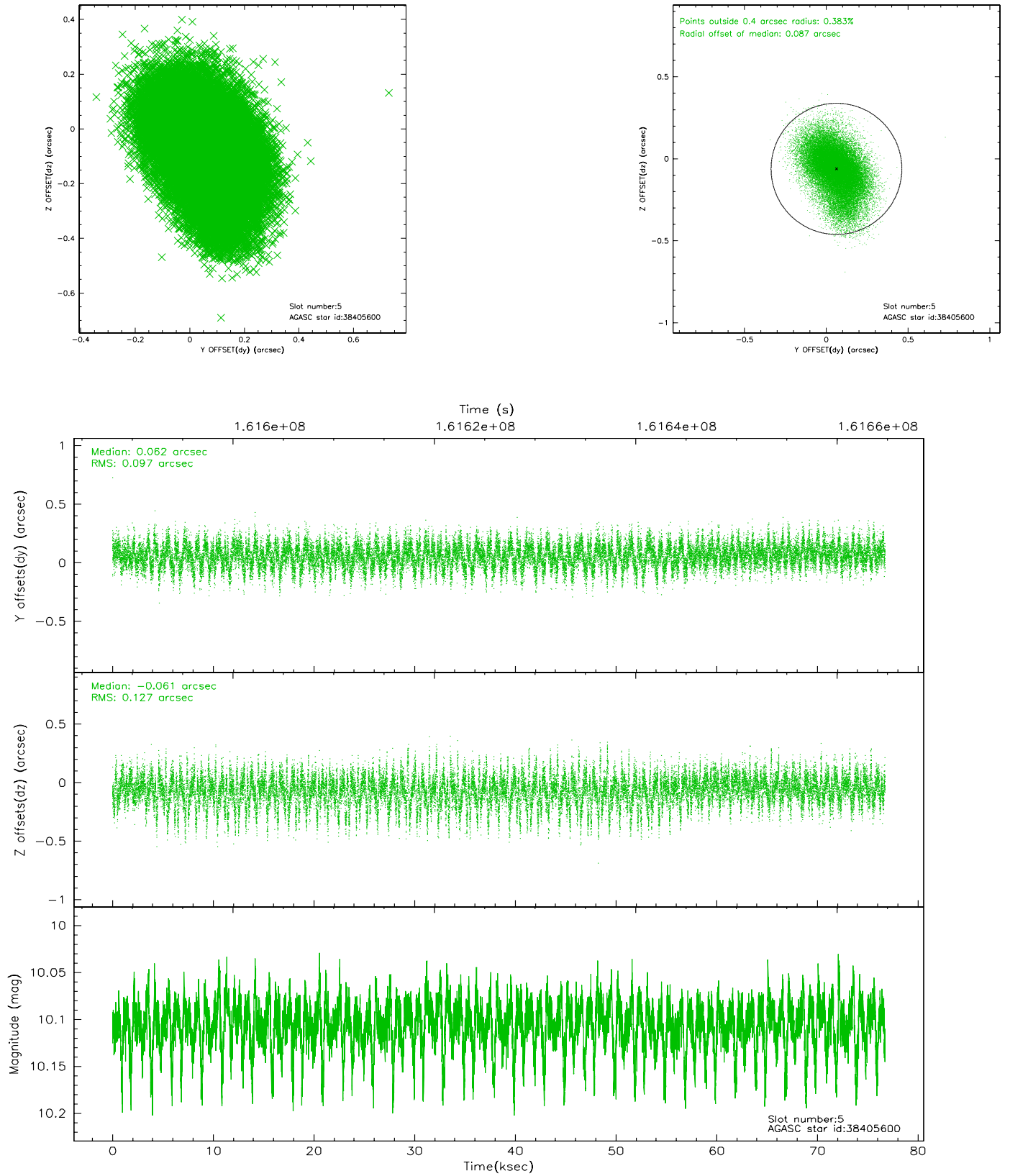
### 2.4.1 Slot 3



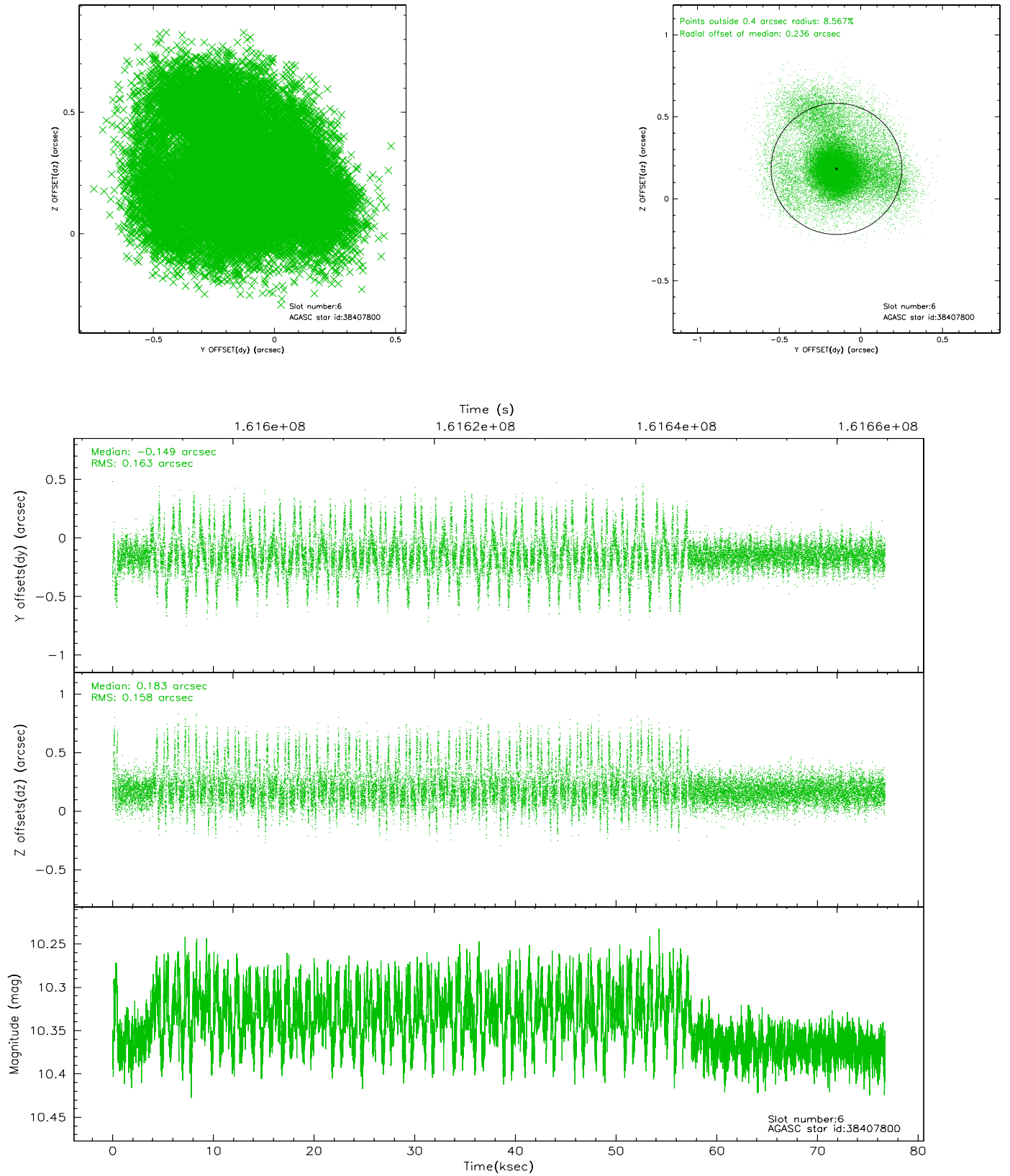
## 2.4.2 Slot 4



### 2.4.3 Slot 5



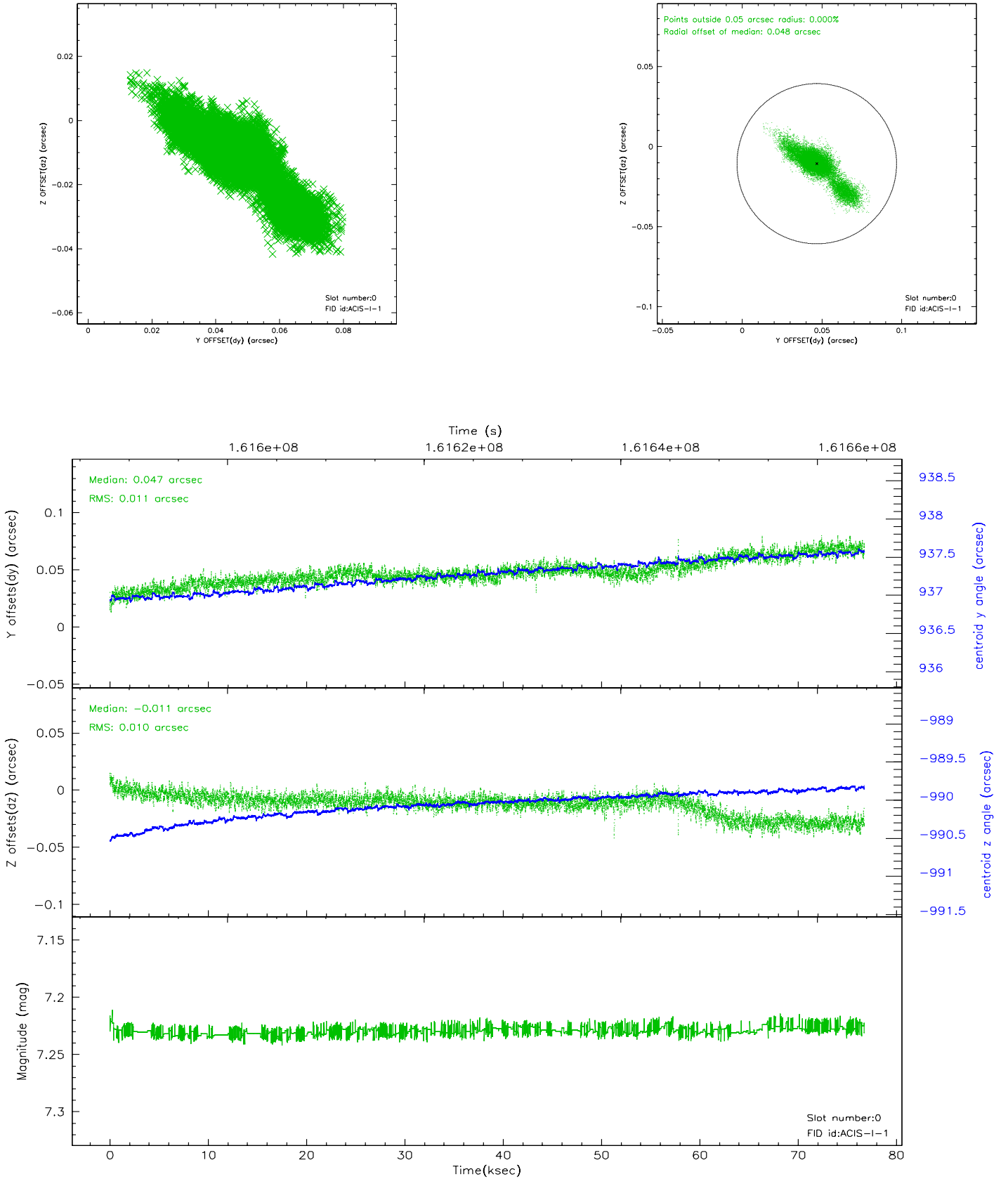
## 2.4.4 Slot 6



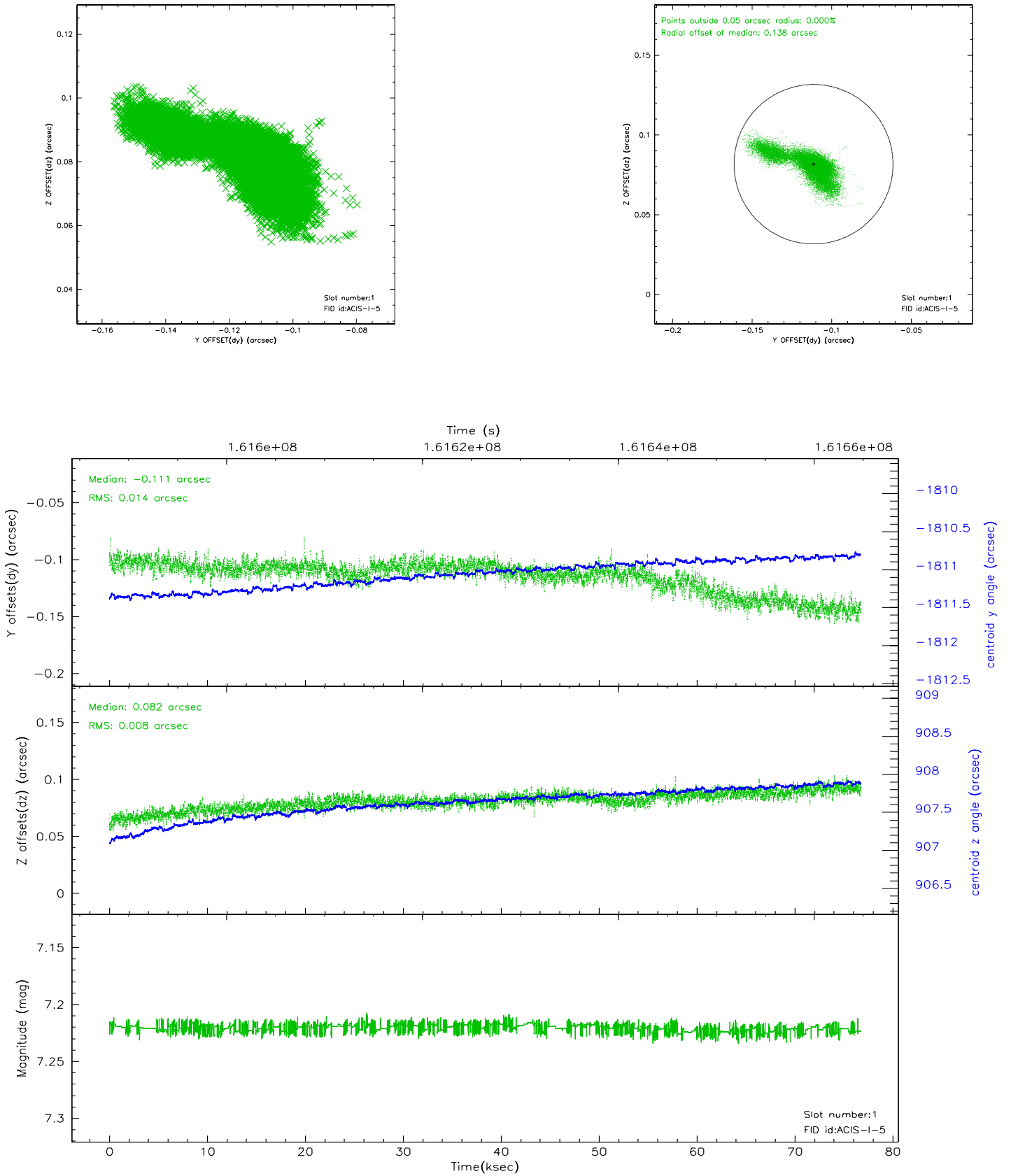


## 2.5 FID Slots

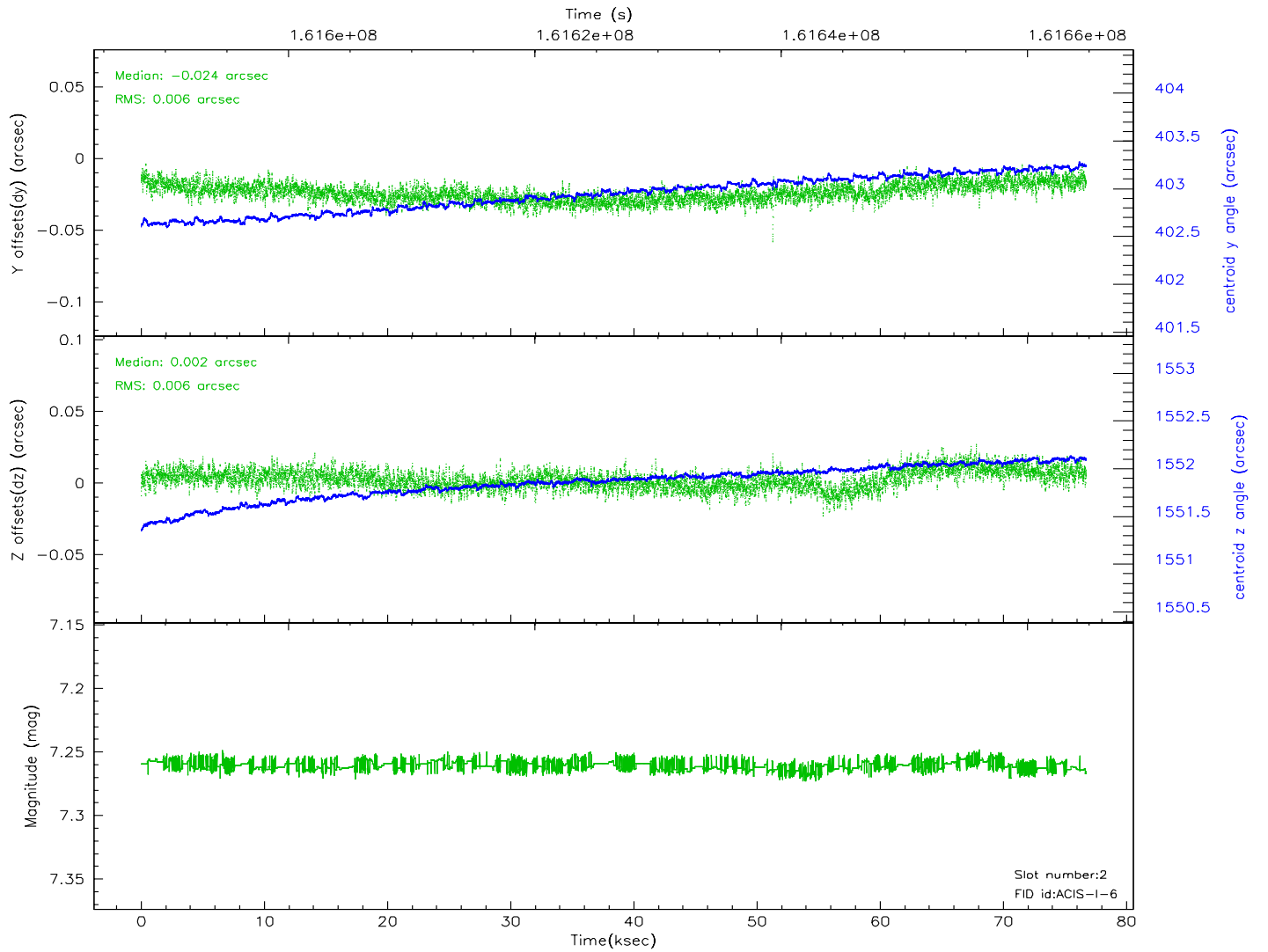
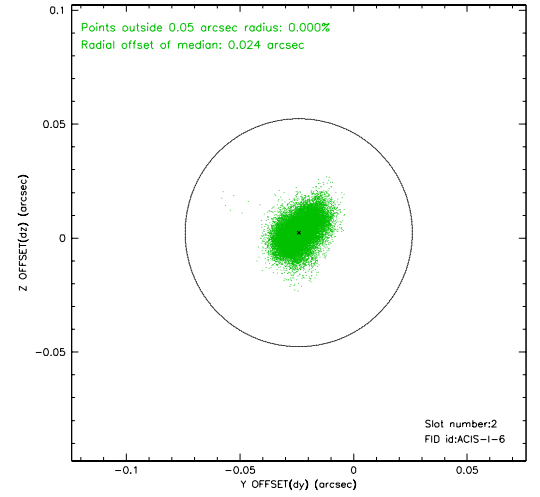
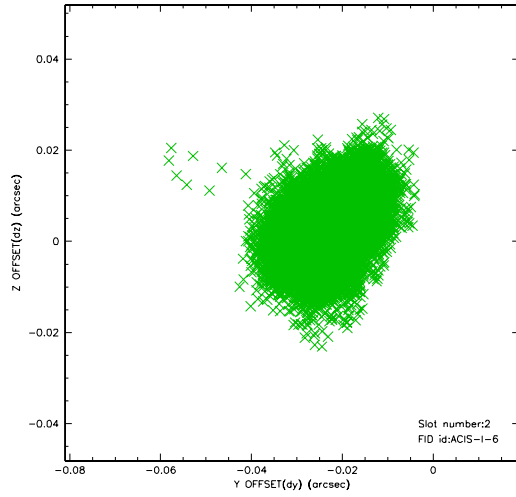
### 2.5.1 Slot 0



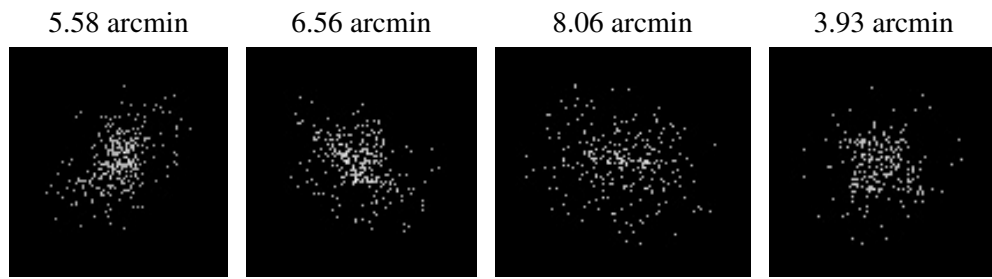
## 2.5.2 Slot 1



### 2.5.3 Slot 2



### 3 Point Sources



# A Summary

## A.1 Status

V&V Scientist	Beth Sundheim
V&V Date (YYYY-MM-DD)	2010.10.01
V&V Edition	2
V&V Disposition and Status	OK
V&V Charge Time	75.686

## A.2 Comments

The guide star in slot 7 was manually excluded from the processing due to poor data quality.