

V&V Reference Report

L2 ASCDS Version : 7.6.8.1

Observation 4393 - L2 Version 001
Chandra X-Ray Center

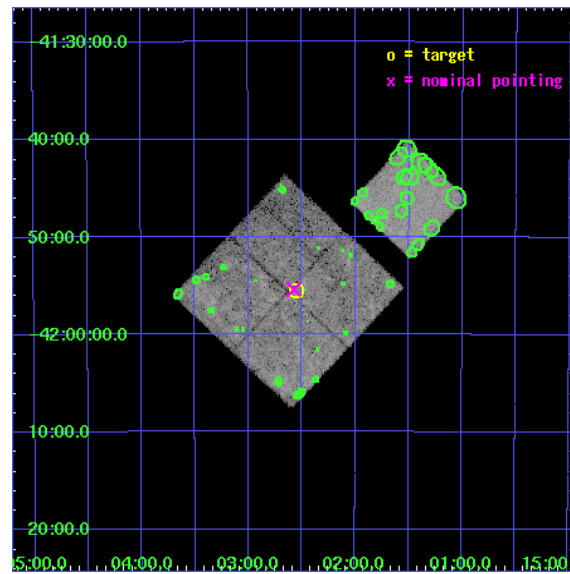
L2 Processing Date : Aug 4 2006

Contents

1	Front	2
2	OBI	3
2.1	OBI	3
2.1.1	Images	3
2.1.2	Bias	3
2.1.3	Parameters	4
2.1.4	Events	4
2.2	Compared Parameters	5
2.3	Aspect	6
2.4	Star Slots	9
2.4.1	Slot 3	9
2.4.2	Slot 4	10
2.4.3	Slot 5	11
2.4.4	Slot 6	12
2.4.5	Slot 7	13
2.5	FID Slots	14
2.5.1	Slot 0	14
2.5.2	Slot 1	15
2.5.3	Slot 2	16
3	Point Sources	17
A	Summary	18
A.1	Status	18
A.2	Comments	18

1 Front

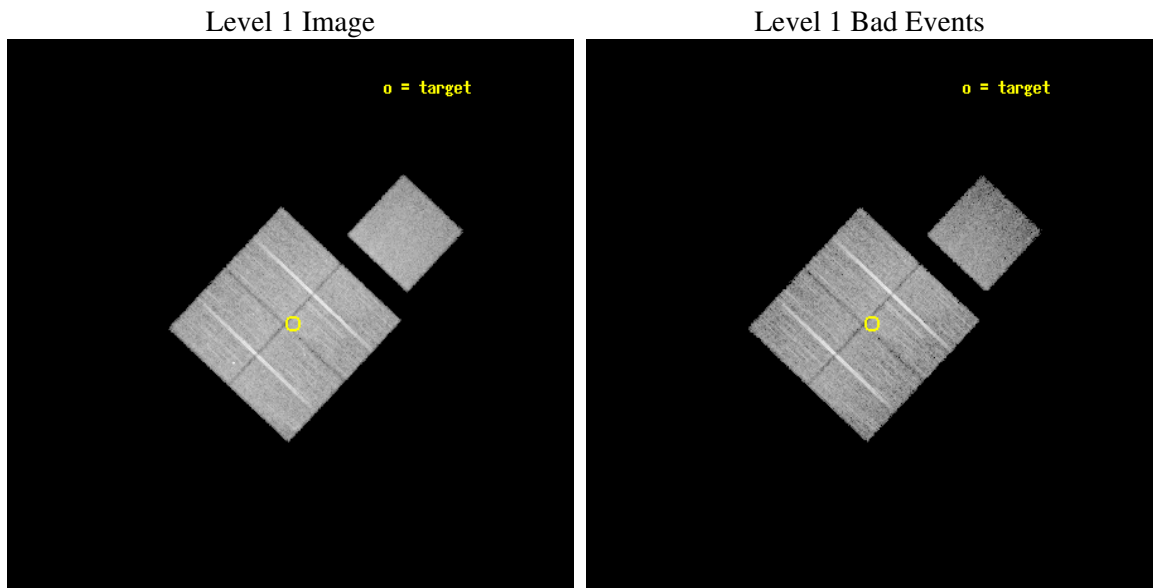
seq_num	500317
obs_id	4393
title	STUDYING HIGH MACH NUMBER SHOCKS IN YOUNG SUPERNOVA REMNANTS WITH CHANDRA
observer	Prof. John Hughes
object	SN1006
dtcycle	0
cycle	P
ra_targ	225.6375
dec_targ	-41.925
ra_nom	225.64334367873
dec_nom	-41.923409847294
roll_nom	43.212597101367
revision	2
ontime	19849.299961835
livetime	19589.954244992
ontime0	19846.158971608
ontime1	19849.299961835
ontime2	19849.299961835
ontime3	19849.299961835
ontime7	19849.299961835
l2events	138639



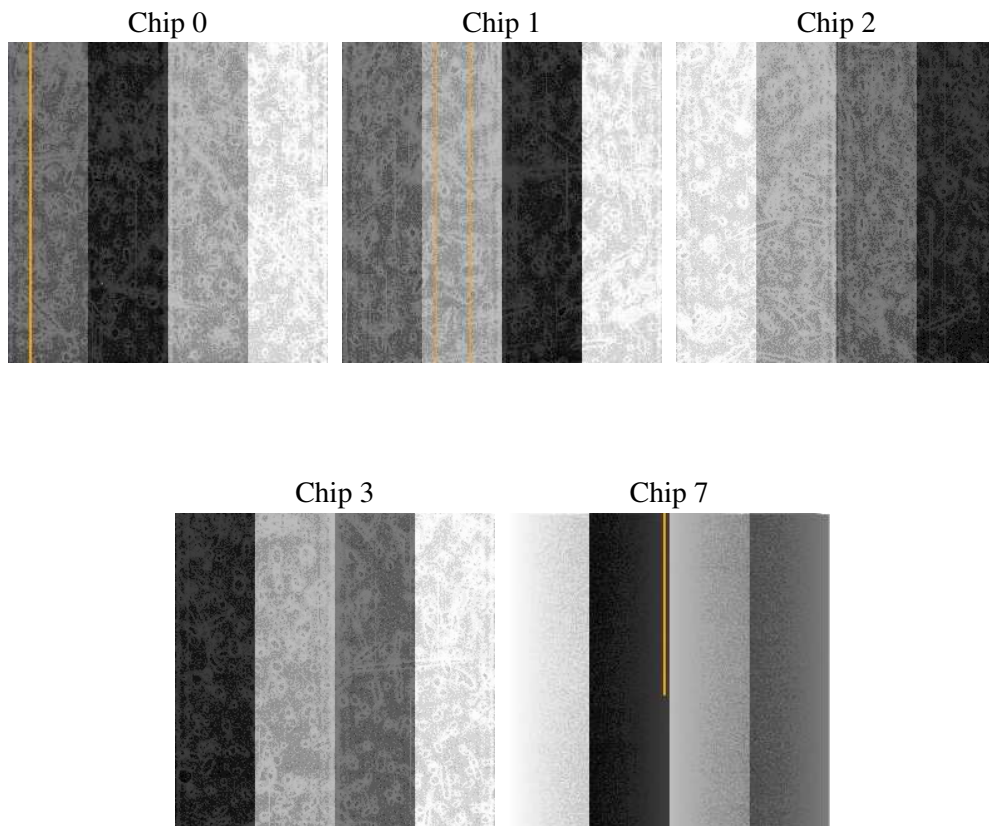
2 OBI

2.1 OBI

2.1.1 Images



2.1.2 Bias



2.1.3 Parameters

obi_num	0
ascdsver	7.6.8.1
caldbver	3.2.2
date	2006-08-04T16:17:03
revision	2

sched_exp_time	20074.000000
ontime	19854.329458296
ontime0	19851.188448161
ontime1	19854.329438388
ontime2	19854.329458296
ontime3	19854.329458296
ontime7	19854.329438388
llevents	534530

2.1.4 Events

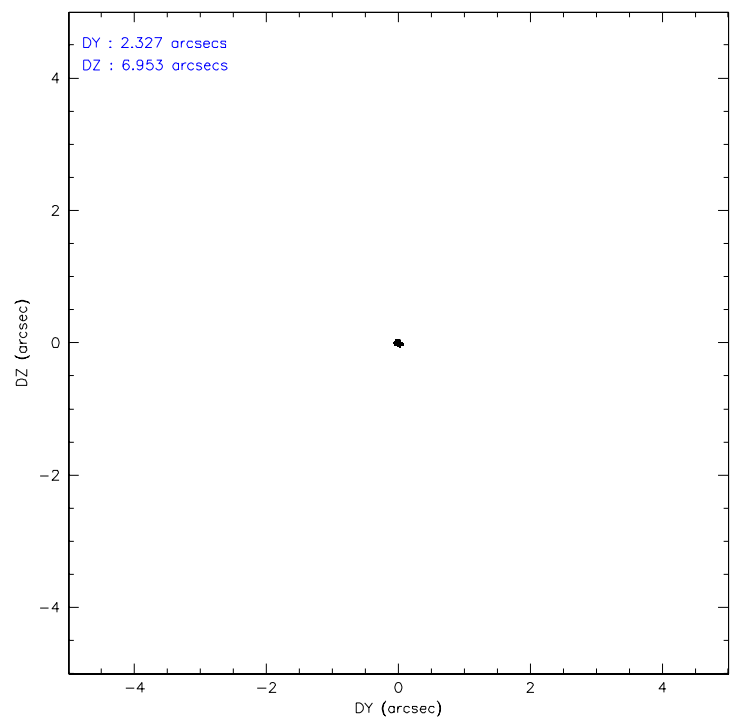
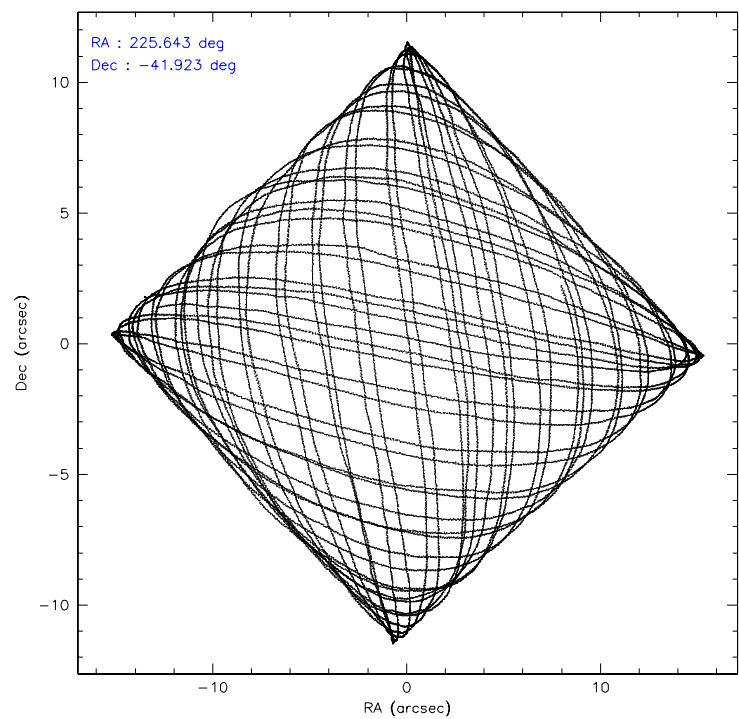
	ccd 0	ccd 1	ccd 2	ccd 3	ccd 7
level 1 events	108701	111851	109310	112622	92046
rejected events	80623	79478	88524	86564	50087
rejected %	74%	71%	80%	76%	54%

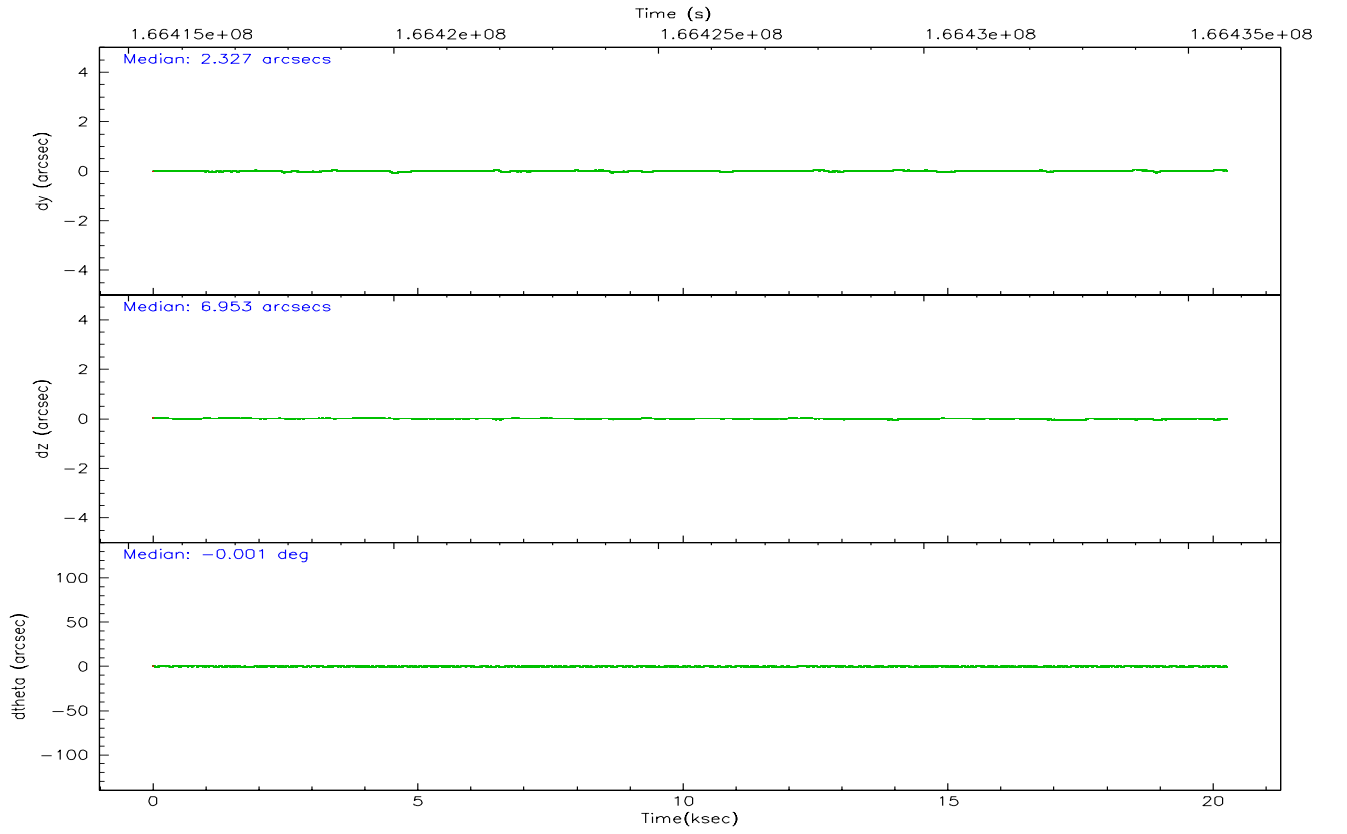
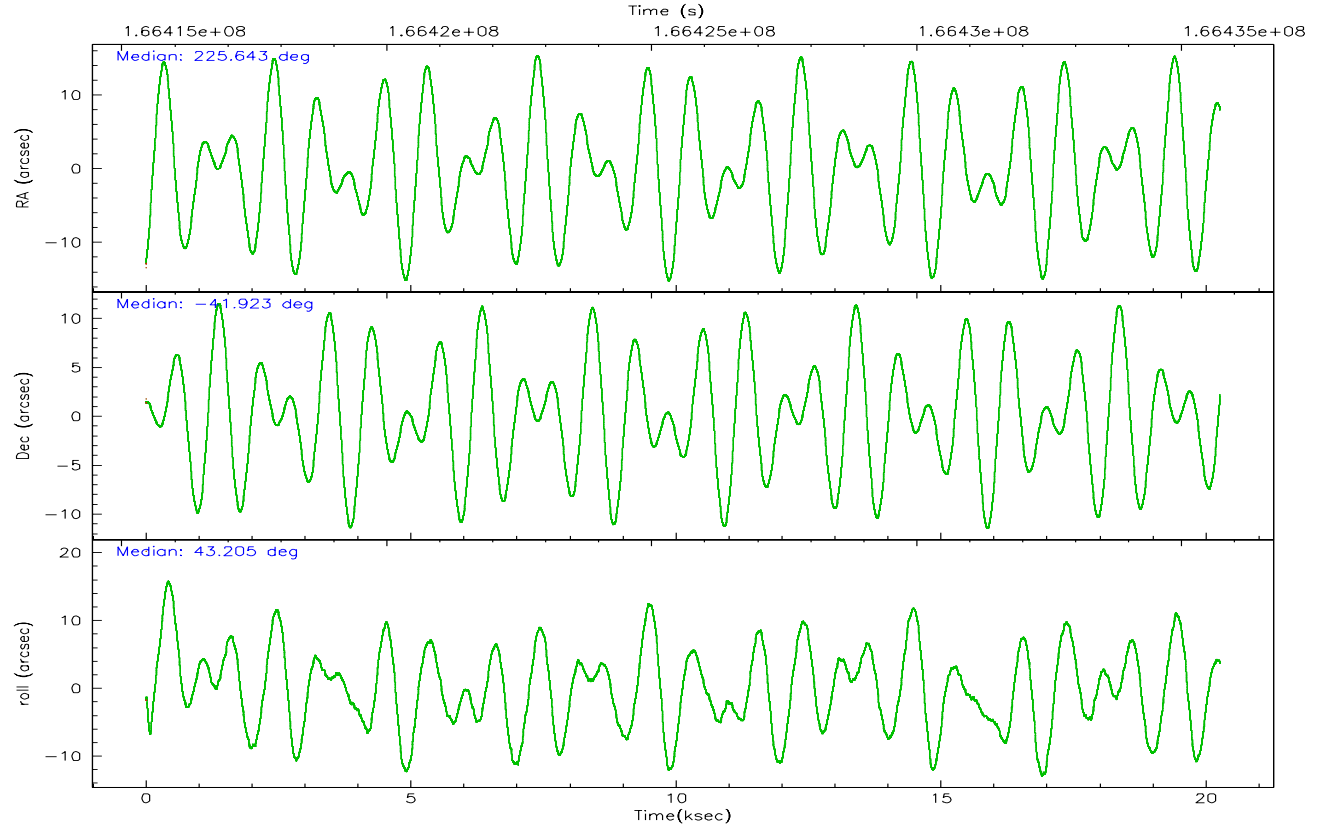
	ccd 0	ccd 1	ccd 2	ccd 3	ccd 7
grade 0 events	20271	23611	14131	18698	3510
	18%	21%	12%	16%	3%
grade 1 events	88	96	83	113	60
	0%	0%	0%	0%	0%
grade 2 events	3350	3606	2699	3053	10119
	3%	3%	2%	2%	10%
grade 3 events	1329	1524	1165	1223	2458
	1%	1%	1%	1%	2%
grade 4 events	1251	1466	1148	1260	2361
	1%	1%	1%	1%	2%
grade 5 events	2930	3123	2785	3360	7287
	2%	2%	2%	2%	7%
grade 6 events	1881	2171	1652	1827	23521
	1%	1%	1%	1%	25%
grade 7 events	77601	76254	85647	83088	42730
	71%	68%	78%	73%	46%

2.2 Compared Parameters

Parameter	Planned	Actual	Parameter	Planned	Actual
Instrument	ACIS	ACIS	Obspar format version number	6	6
Detector	ACIS-01237	ACIS-01237	Obspar file type	PREDICTED	ACTUAL
Grating	NONE	NONE	Obspar update status	NONE	UPDATED
Data mode	VFAINT	VFAINT	On-chip summing requested	N	N
Observation mode	POINTING	POINTING	Subarray requested	NONE	NONE
Pointing RA	225.632851	225.6433436787289	Alternating exposures requested	N	N
Pointing Dec	-41.949639	-41.9234098472938	Primary exposure time	0.000000	3.1
Pointing Roll	42.996888	43.21259710136724			
SIM focus pos (mm)	-0.782348	-0.7809083437167272			
SIM defocus (mm)	0	0.001439871863259334			
SIM translation stage pos (mm)	-233.592463	-233.5874344608287			
SIM translation stage offset (mm)	0	-0.005018542100998502			
Observation start time	166415649.184000	166415273.11818			
Observation start date	2003-04-11T02:33:05	2003-04-11T02:27:53			
Observation end time	166435723.184000	166435857.16905			
Observation end date	2003-04-11T08:07:39	2003-04-11T08:10:57			
Read mode	TIMED	TIMED			

2.3 Aspect



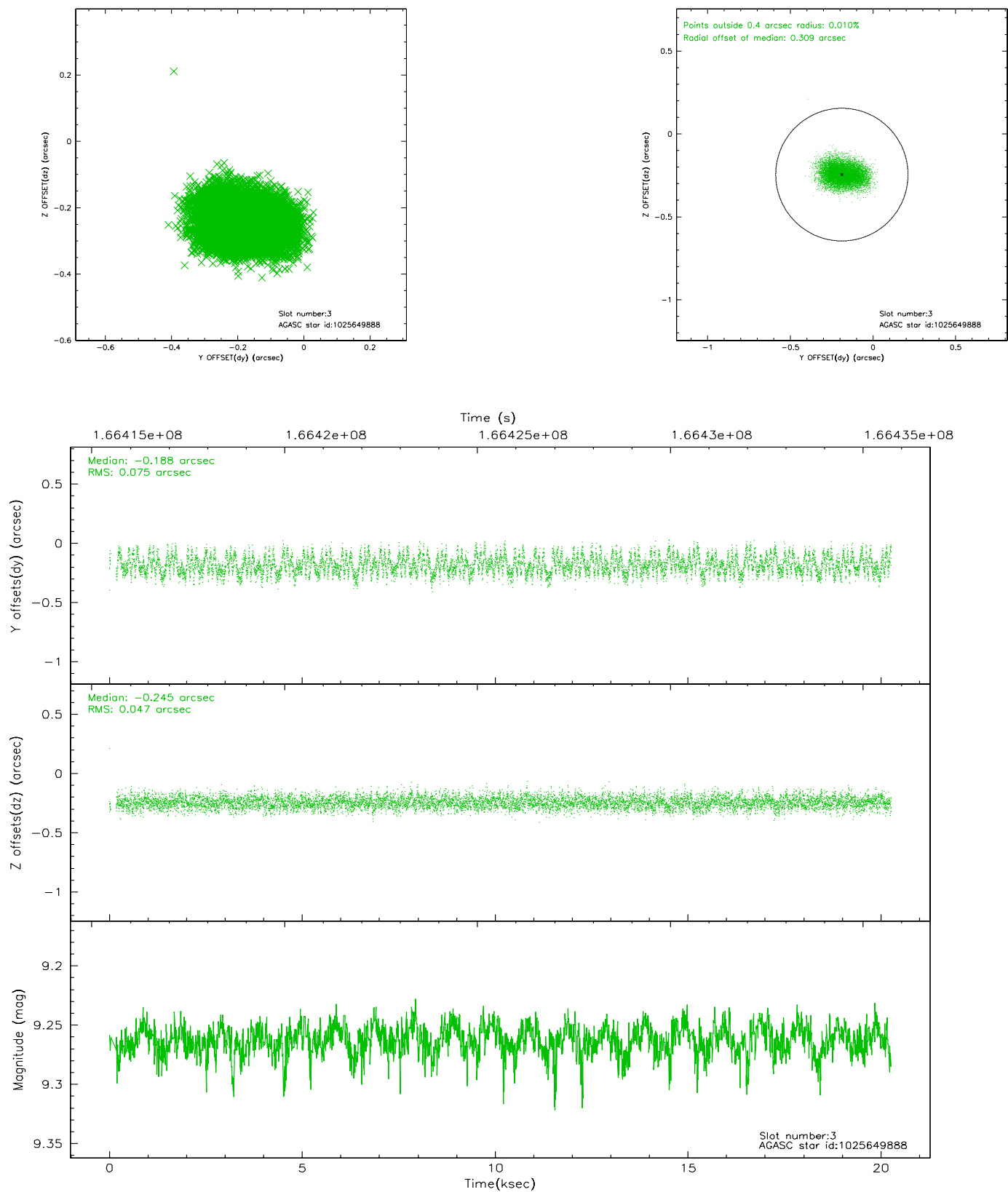


Slot Statistics

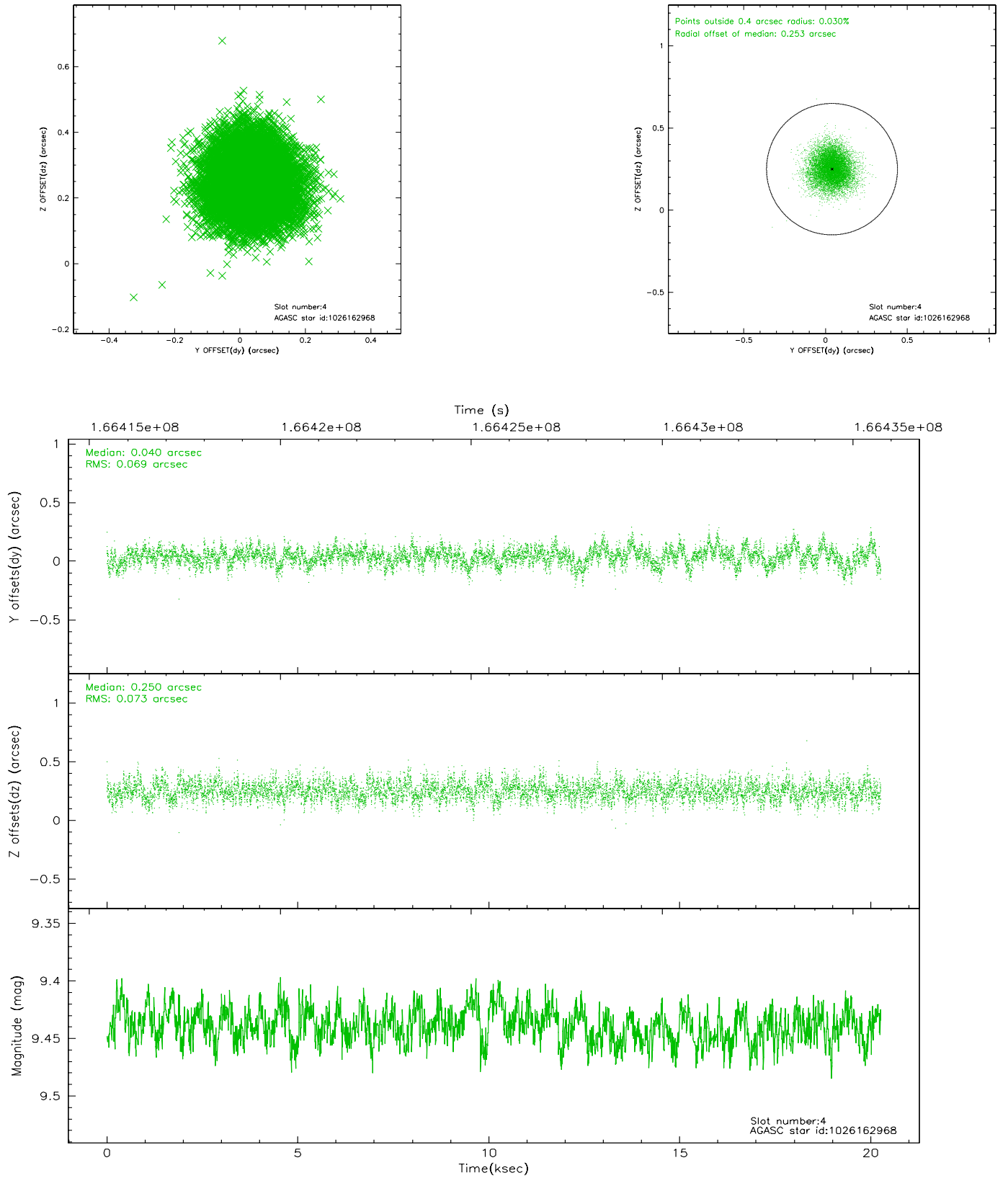
slot	status	id	mag	n_pts	med_dy	med_dz	dr1	dr2	ra	dec	mean_y	mean_z
0	FID	ACIS-I-1	7.25	4944	-0.007	0.031	0.006	0.010	0.000000	0.000000	937.46	-830.33
1	FID	ACIS-I-5	7.24	4944	-0.047	0.049	0.006	0.010	0.000000	0.000000	-1810.55	1067.14
2	FID	ACIS-I-6	7.26	4943	-0.038	-0.009	0.007	0.011	0.000000	0.000000	402.83	1711.75
3	GUIDE	1025649888	9.26	9813	-0.188	-0.245	0.095	0.151	225.540879	-41.189826	1682.92	2170.61
4	GUIDE	1026162968	9.44	9855	0.040	0.250	0.107	0.174	225.835985	-42.679852	-1399.22	-2289.45
5	GUIDE	1026163728	9.23	9878	-0.103	-0.068	0.078	0.127	225.377558	-41.568164	432.70	1472.42
6	GUIDE	1026170368	9.29	9878	0.094	0.030	0.084	0.136	225.763429	-42.291155	-583.68	-1136.37
7	GUIDE	1026170800	9.02	9878	0.156	0.029	0.065	0.106	225.400024	-42.381702	-1513.69	-716.23

2.4 Star Slots

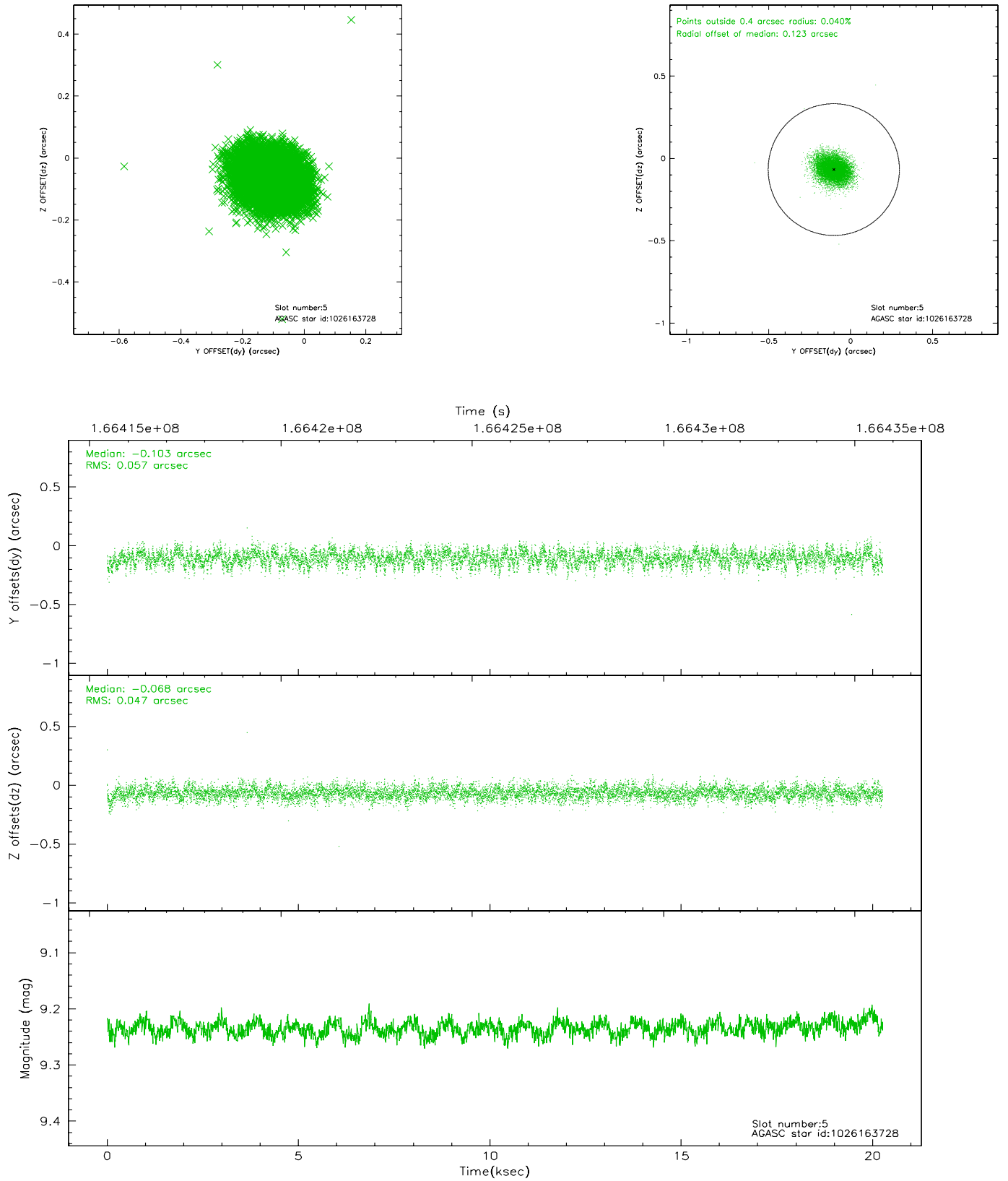
2.4.1 Slot 3



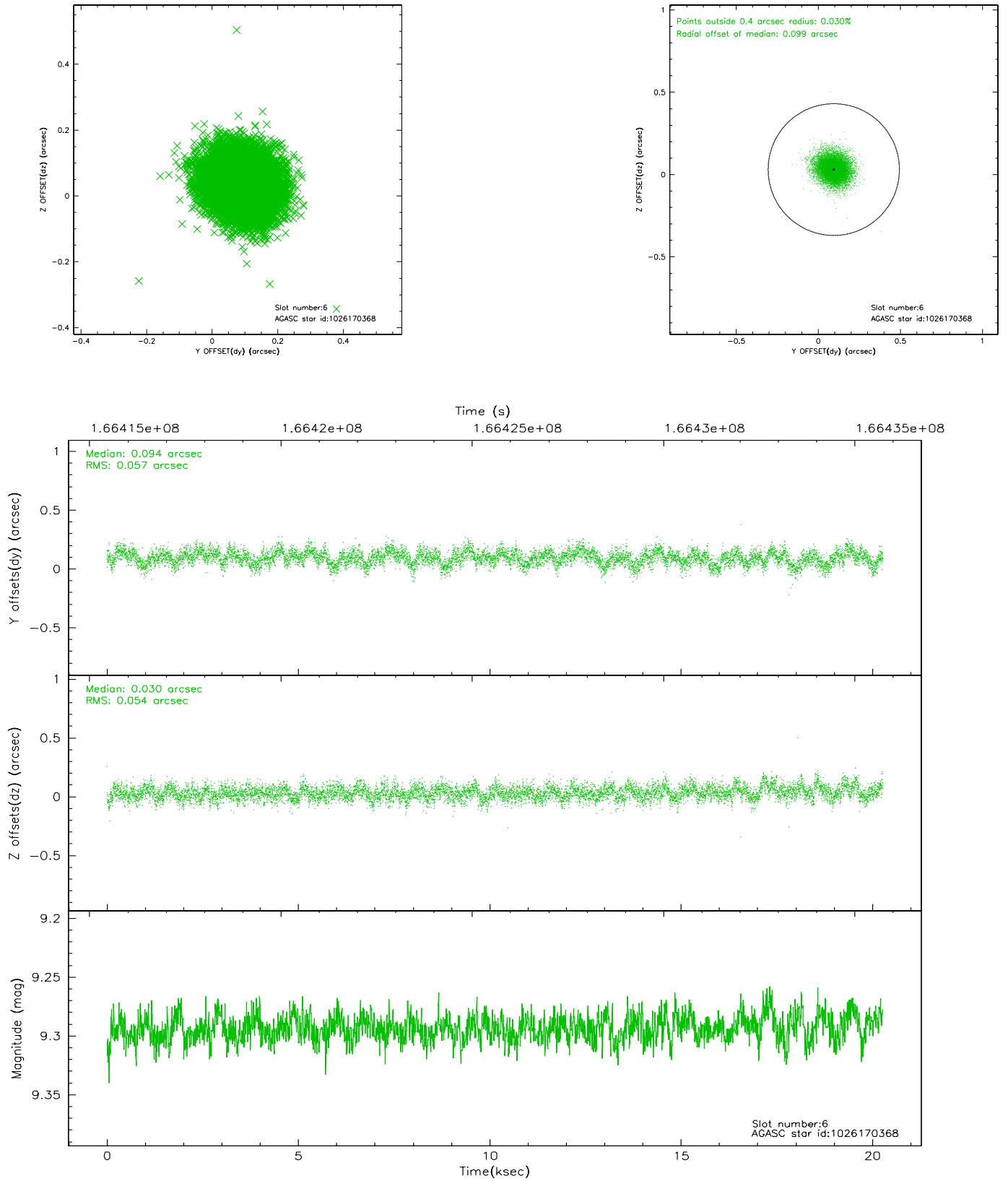
2.4.2 Slot 4



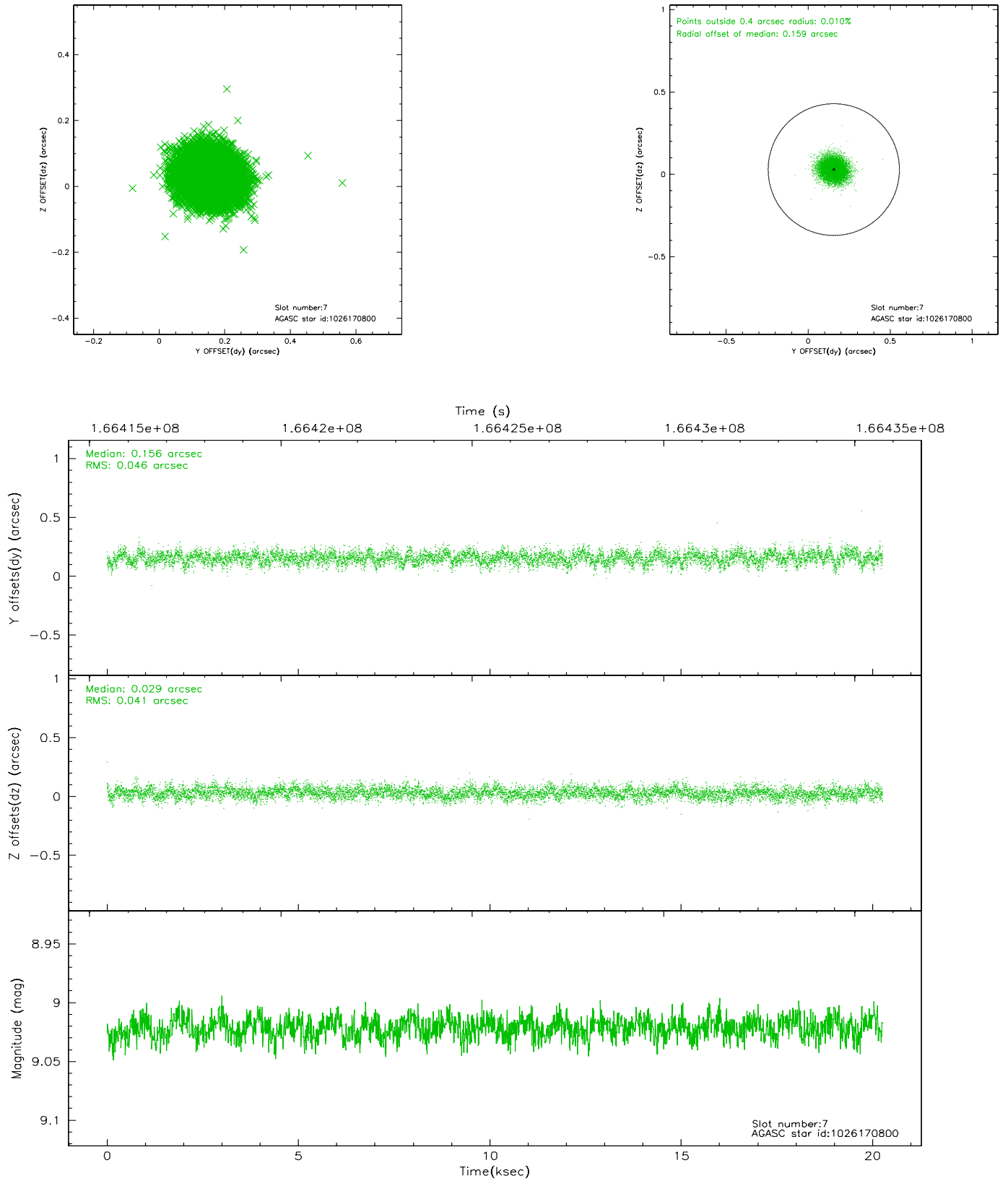
2.4.3 Slot 5



2.4.4 Slot 6

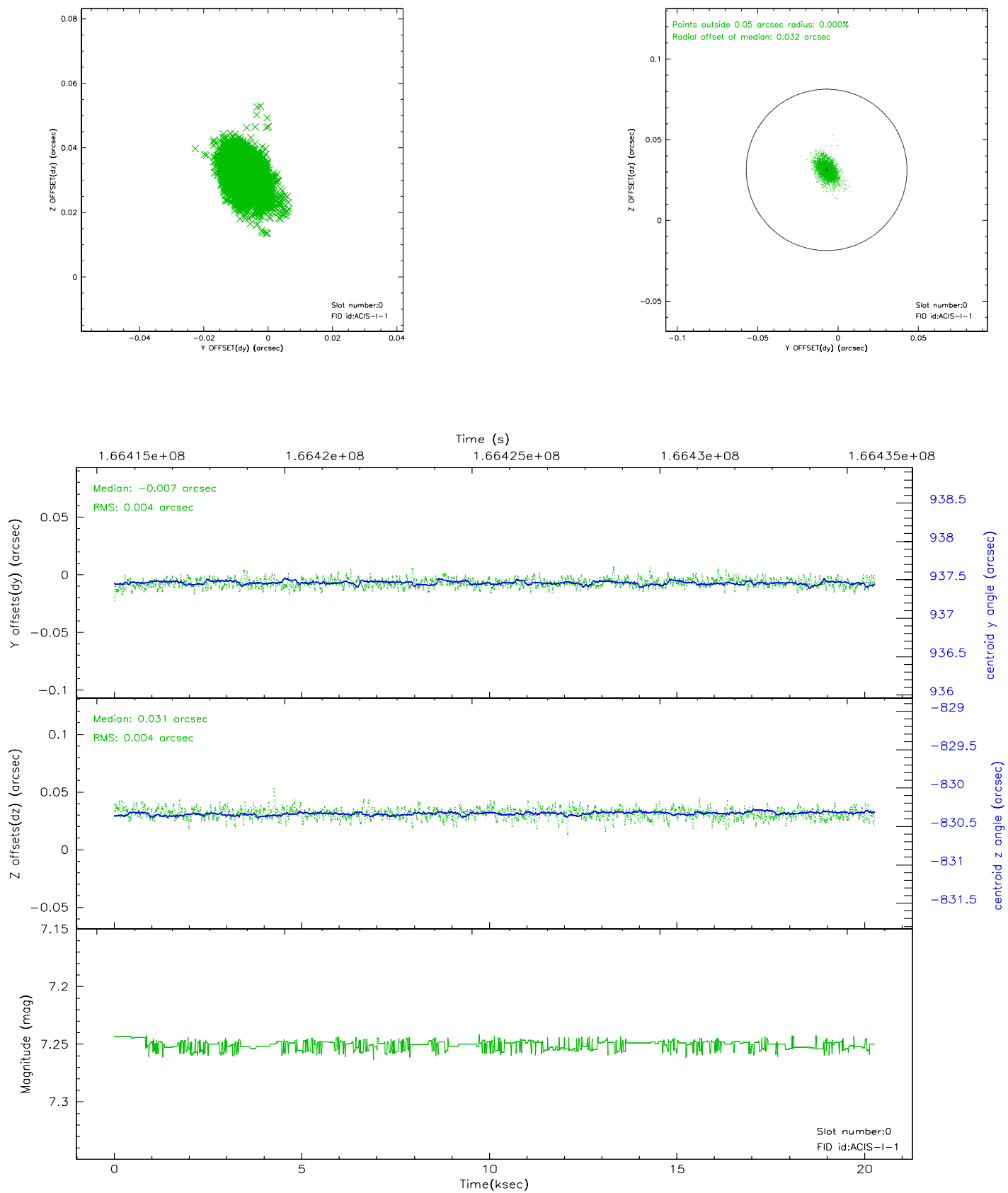


2.4.5 Slot 7

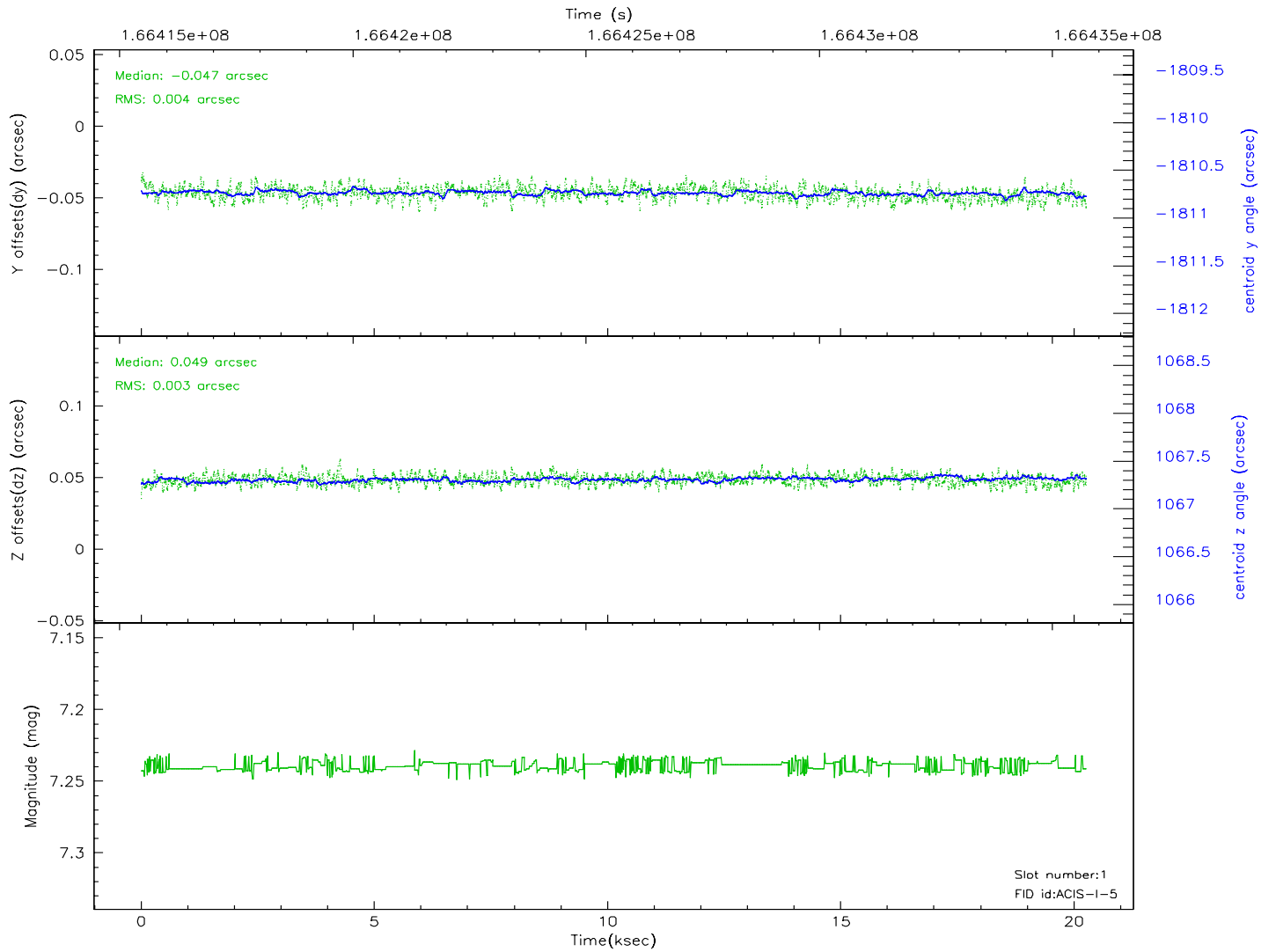
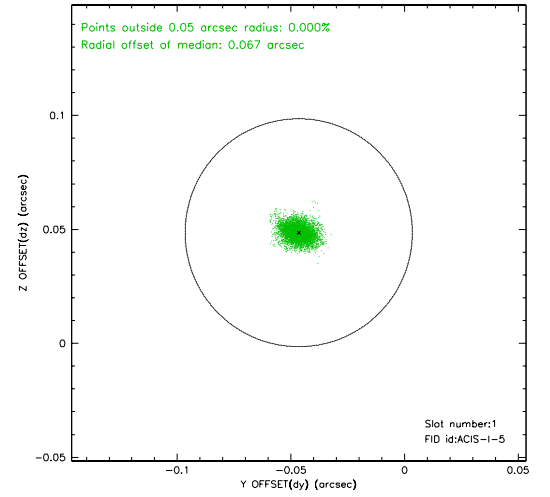
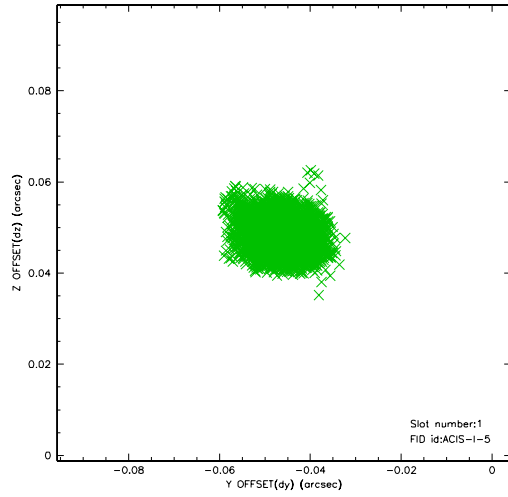


2.5 FID Slots

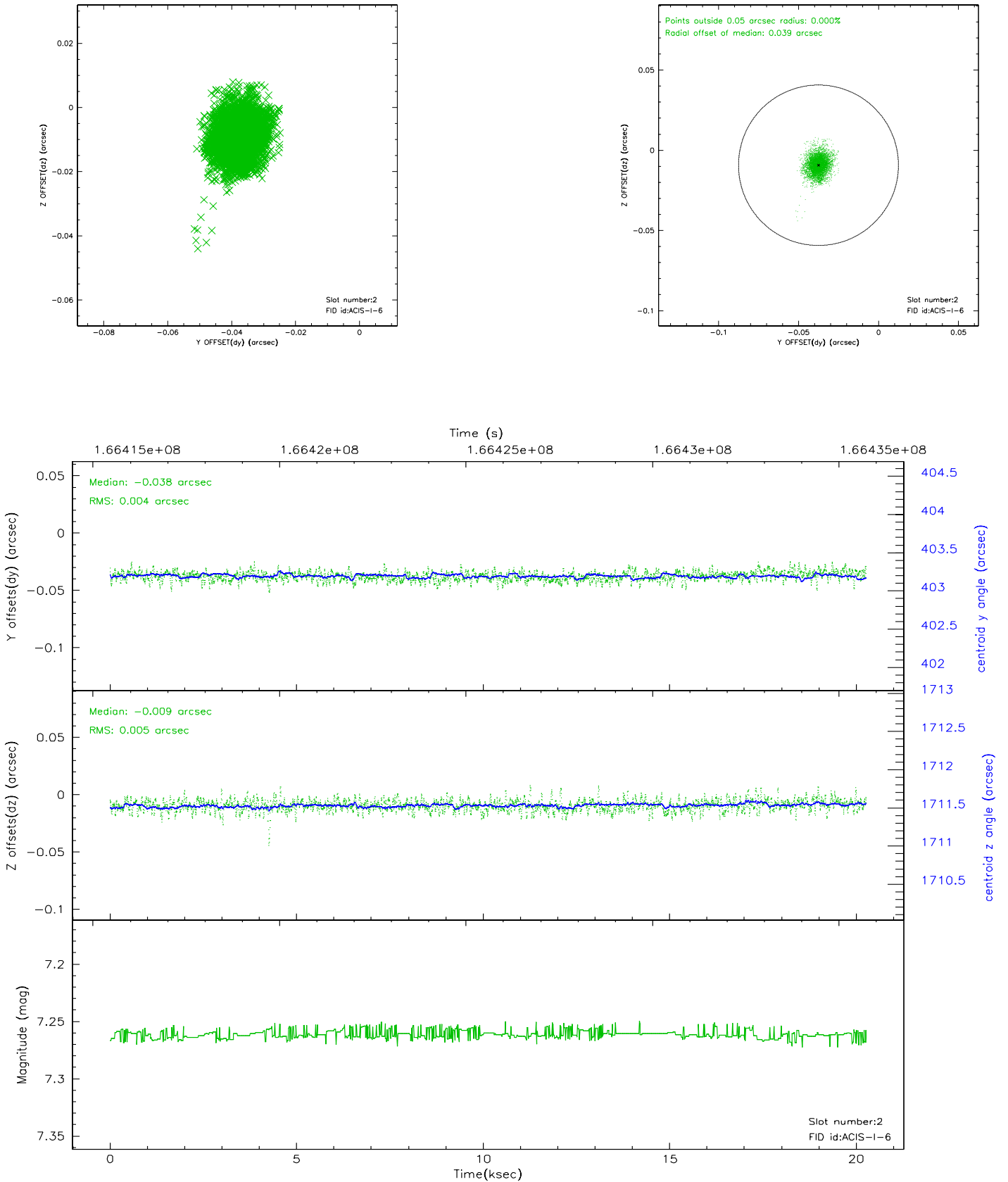
2.5.1 Slot 0



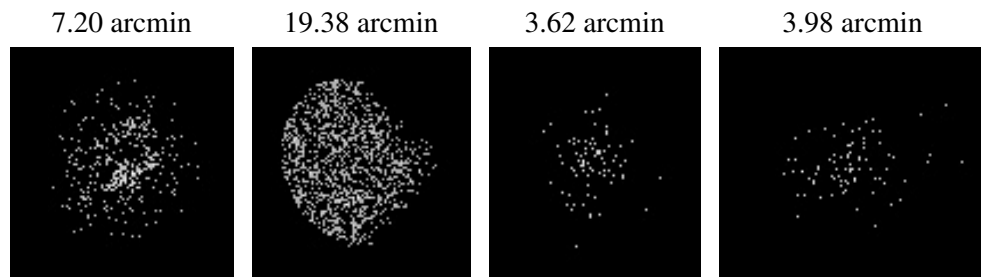
2.5.2 Slot 1



2.5.3 Slot 2



3 Point Sources



A Summary

A.1 Status

V&V Scientist	Beth Sundheim
V&V Date (YYYY-MM-DD)	2006.08.04
V&V Edition	1
V&V Disposition and Status	OK
V&V Charge Time	19.849

A.2 Comments