

V&V Reference Report

L2 ASCDS Version : 7.6.8

Observation 3920 - L2 Version 001
Chandra X-Ray Center

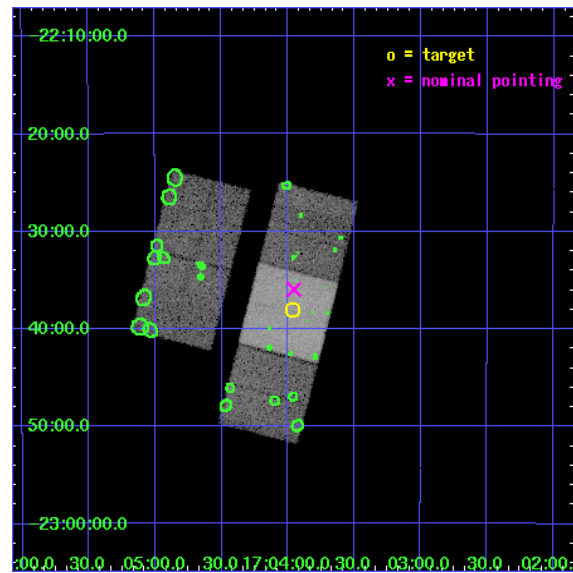
L2 Processing Date : Aug 3 2006

Contents

1	Front	2
2	OBI	3
2.1	OBI	3
2.1.1	Images	3
2.1.2	Bias	3
2.1.3	Parameters	4
2.1.4	Events	4
2.2	Compared Parameters	5
2.3	Aspect	6
2.4	Star Slots	9
2.4.1	Slot 3	9
2.4.2	Slot 4	10
2.4.3	Slot 5	11
2.4.4	Slot 6	12
2.4.5	Slot 7	13
2.5	FID Slots	14
2.5.1	Slot 0	14
2.5.2	Slot 1	15
2.5.3	Slot 2	16
3	Point Sources	17
A	Summary	18
A.1	Status	18
A.2	Comments	18

1 Front

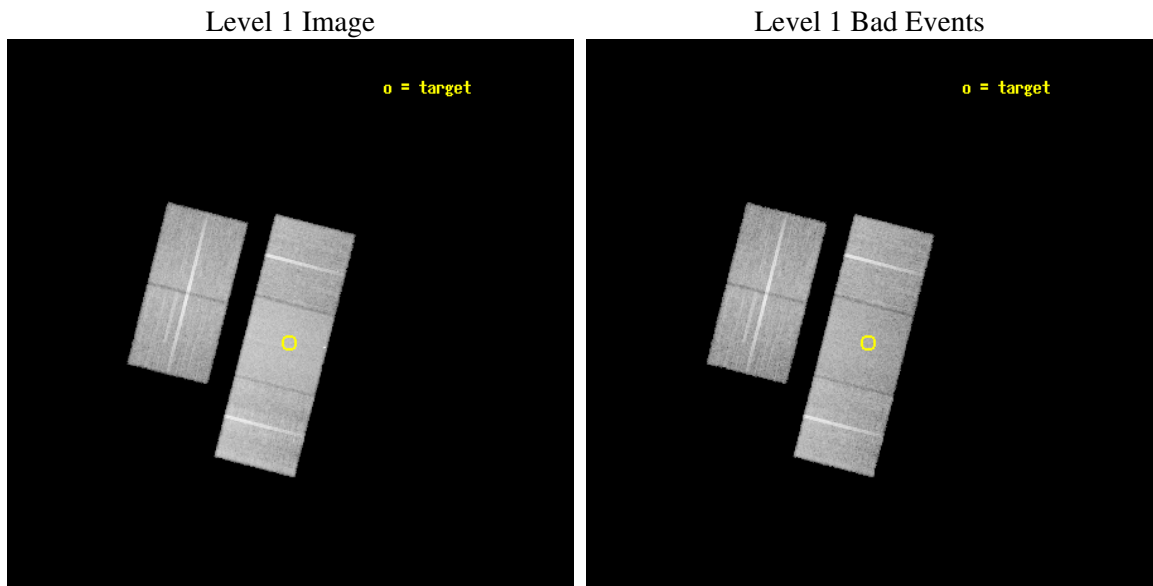
seq_num	500399
obs_id	3920
title	LOCALIZATION OF OPTICALLY-DARK GRBS WITH FAST TOO OBSERVATIONS
observer	Professor Gordon Garmire
object	GRB030528
dtcycle	0
cycle	P
ra_targ	255.9917
dec_targ	-22.63333
ra_nom	255.98881280464
dec_nom	-22.599462857587
roll_nom	104.32004997442
revision	2
ontime	26105.099949807
livetime	25764.017600668
ontime2	26098.81798932
ontime3	26105.099949807
ontime6	26101.958949655
ontime7	26105.099949807
ontime8	26105.099949807
l2events	145316



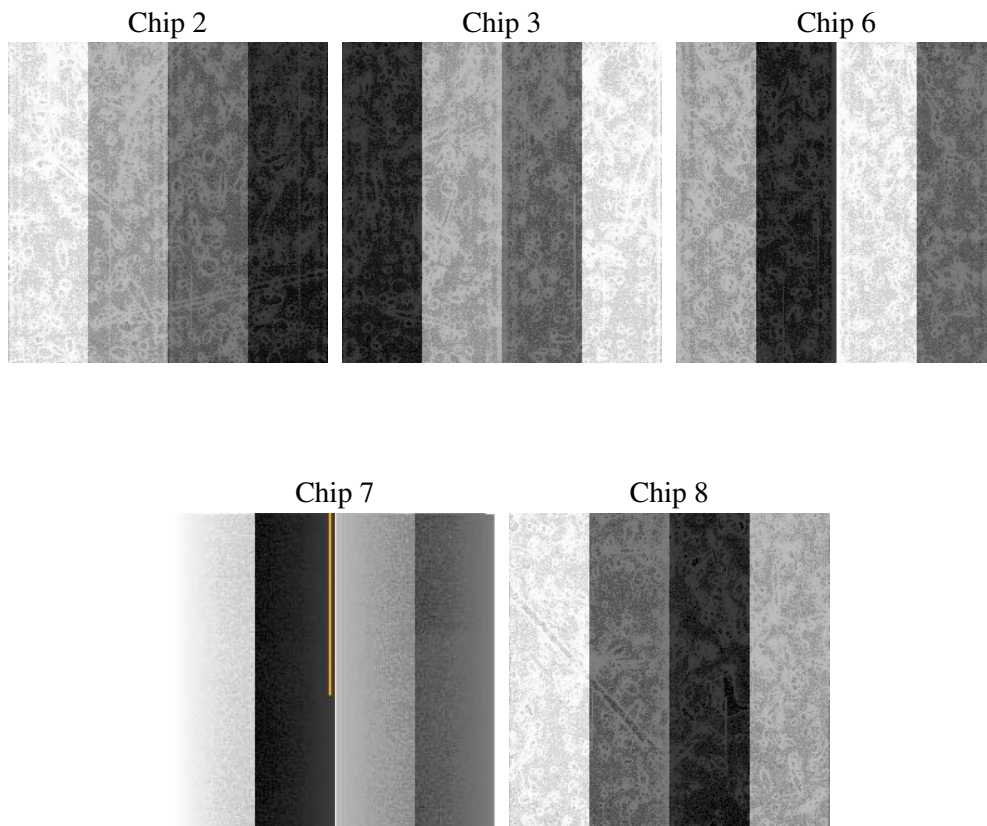
2 OBI

2.1 OBI

2.1.1 Images



2.1.2 Bias



2.1.3 Parameters

obi_num	0
ascdsver	7.6.8
caldbver	3.2.2
date	2006-08-03T08:05:02
revision	2

sched_exp_time	26000.000000
ontime	26111.19581762
ontime2	26104.913857132
ontime3	26111.19581762
ontime6	26108.054817468
ontime7	26111.19581762
ontime8	26111.19581762
l1events	872229

2.1.4 Events

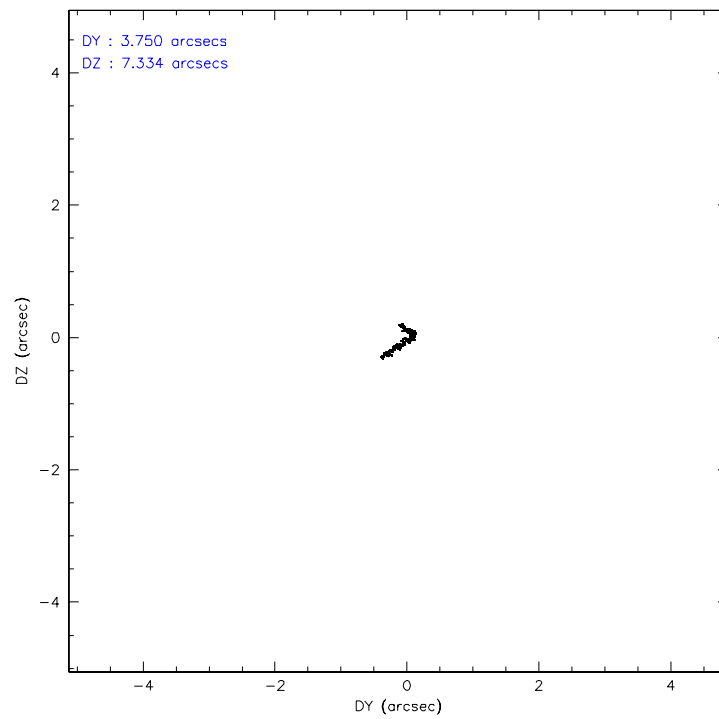
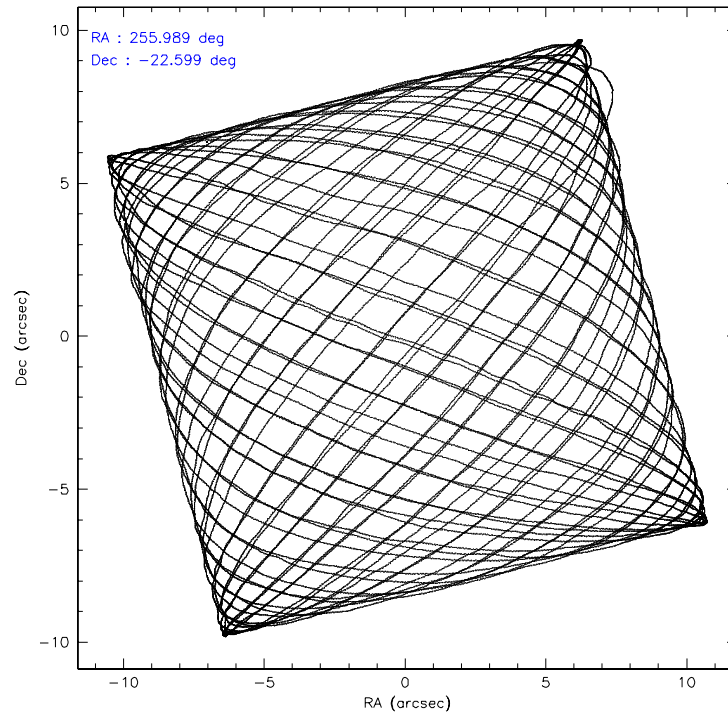
	ccd 2	ccd 3	ccd 6	ccd 7	ccd 8
level 1 events	153414	151443	158497	209332	199543
rejected events	134927	132779	139163	130422	158324
rejected %	87%	87%	87%	62%	79%

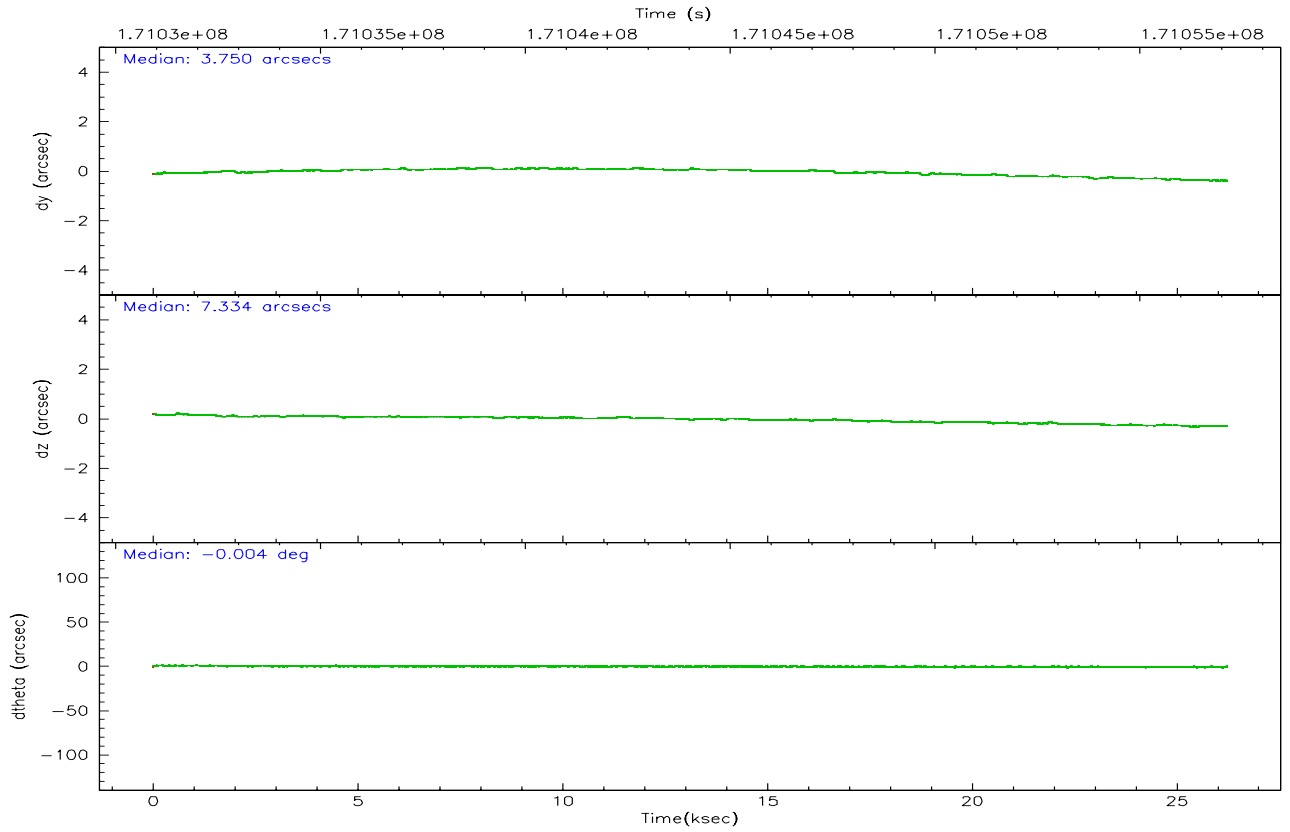
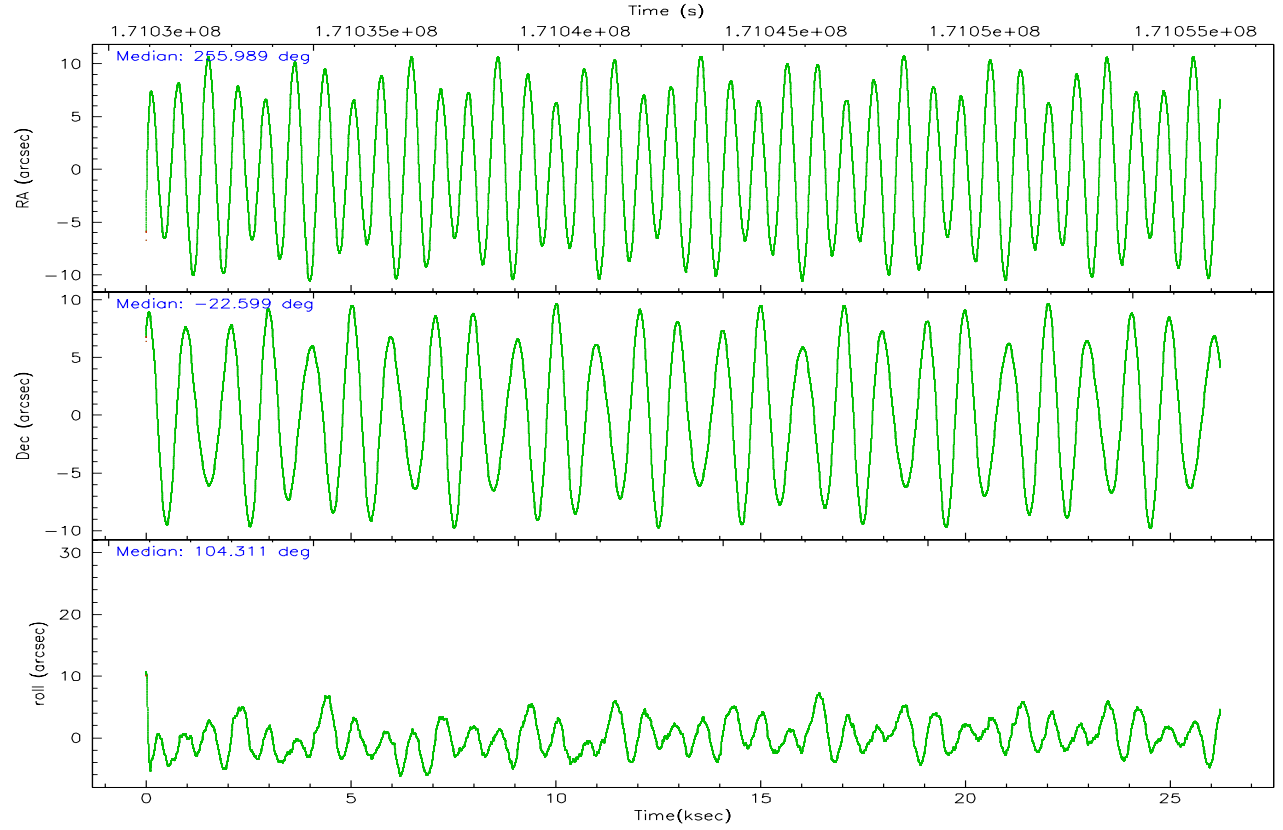
	ccd 2	ccd 3	ccd 6	ccd 7	ccd 8
grade 0 events	8233	8423	7979	4882	13316
	5%	5%	5%	2%	6%
grade 1 events	83	99	63	124	125
	0%	0%	0%	0%	0%
grade 2 events	3699	3493	3816	19317	8904
	2%	2%	2%	9%	4%
grade 3 events	1766	1814	1877	3933	4366
	1%	1%	1%	1%	2%
grade 4 events	1773	1751	1814	3826	4116
	1%	1%	1%	1%	2%
grade 5 events	5985	6909	7195	13421	9309
	3%	4%	4%	6%	4%
grade 6 events	3017	3188	3853	46968	10521
	1%	2%	2%	22%	5%
grade 7 events	128858	125766	131900	116861	148886
	83%	83%	83%	55%	74%

2.2 Compared Parameters

Parameter	Planned	Actual	Parameter	Planned	Actual
Instrument	ACIS	ACIS	Obspar format version number	6	6
Detector	ACIS-23678	ACIS-23678	Obspar file type	PREDICTED	ACTUAL
Grating	NONE	NONE	Obspar update status	NONE	UPDATED
Data mode	VFAINT	VFAINT	On-chip summing requested	N	N
Observation mode	POINTING	POINTING	Subarray requested	NONE	NONE
Pointing RA	256.009707	255.9888128046354	Alternating exposures requested	N	N
Pointing Dec	-22.618681	-22.59946285758689	Primary exposure time	0.000000	3.1
Pointing Roll	104.171439	104.3200499744236			
SIM focus pos (mm)	-0.684267	-0.6828225247311905			
SIM defocus (mm)	0	0.001444936568705701			
SIM translation stage pos (mm)	-190.132523	-190.1425803651734			
SIM translation stage offset (mm)	0	0.01005778216563158			
Observation start time	171031139.184000	171030144.13848			
Observation start date	2003-06-03T12:37:55	2003-06-03T12:22:24			
Observation end time	171057139.184000	171058070.26467			
Observation end date	2003-06-03T19:51:15	2003-06-03T20:07:50			
Read mode	TIMED	TIMED			

2.3 Aspect



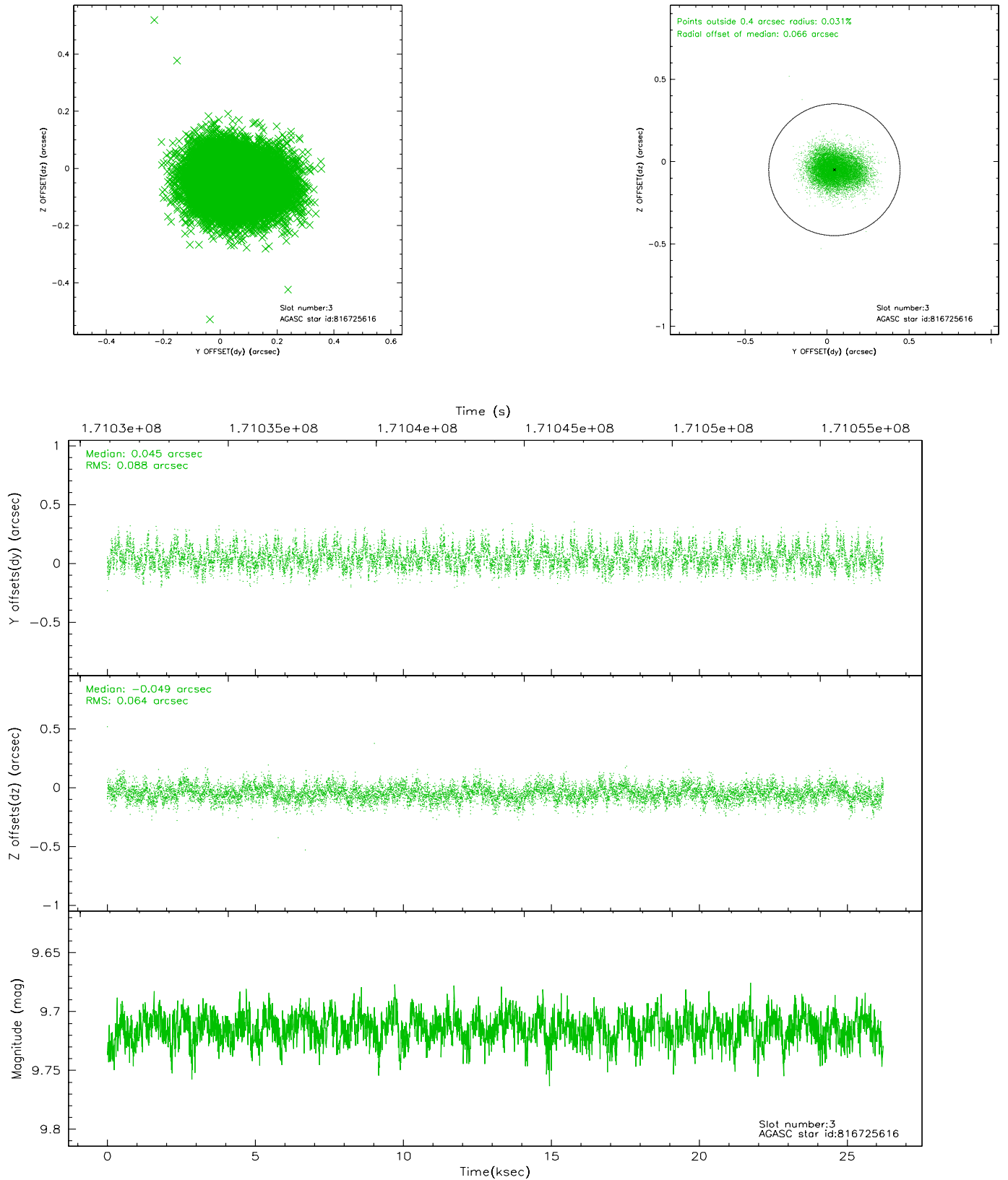


Slot Statistics

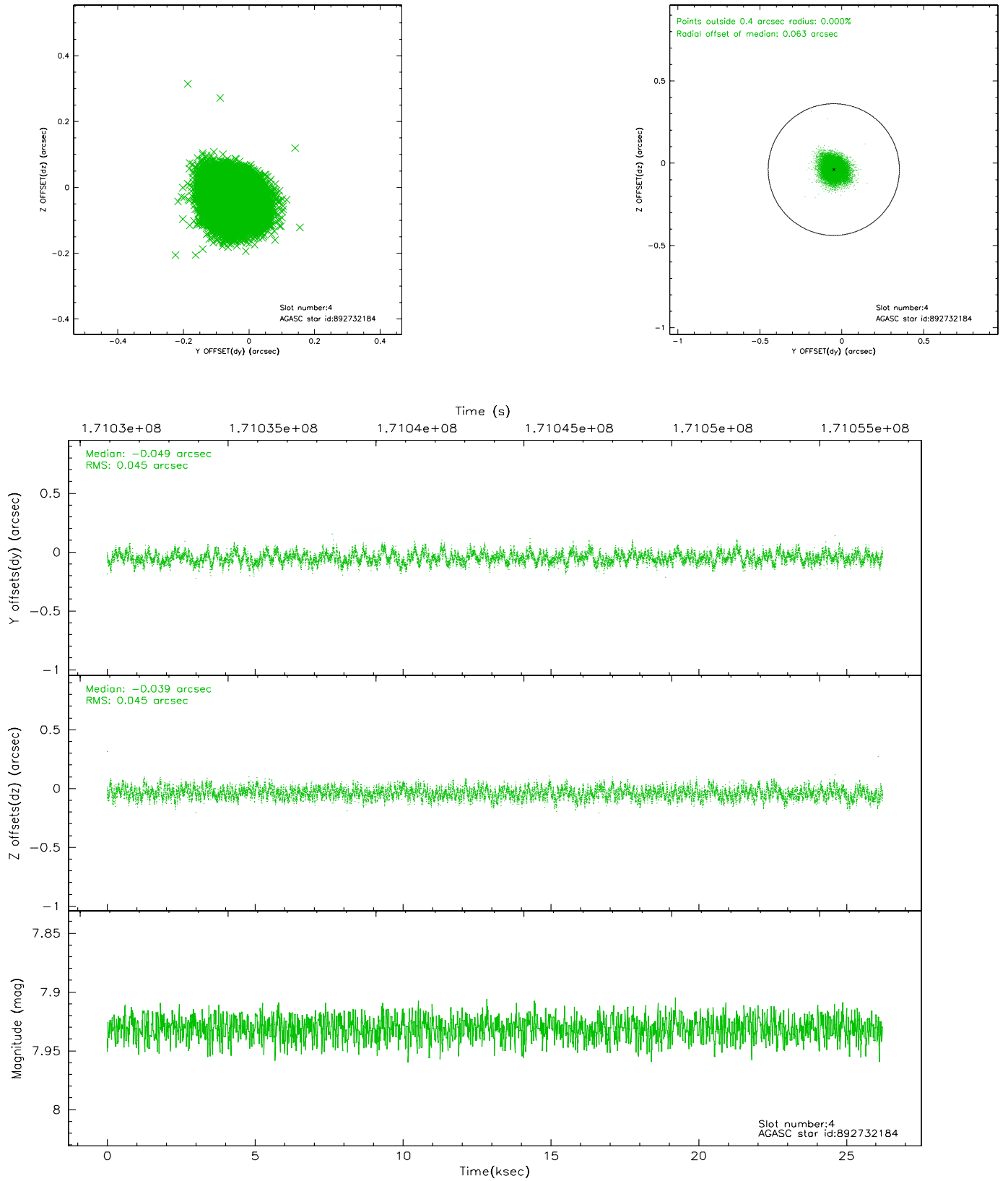
slot	status	id	mag	n_pts	med_dy	med_dz	dr1	dr2	ra	dec	mean_y	mean_z
0	FID	ACIS-S-2	7.11	6397	-0.006	0.008	0.008	0.013	0.000000	0.000000	-756.37	-1728.42
1	FID	ACIS-S-4	7.20	6398	0.000	0.001	0.007	0.013	0.000000	0.000000	2156.86	179.95
2	FID	ACIS-S-5	7.24	6398	-0.026	-0.000	0.010	0.021	0.000000	0.000000	-1809.10	173.73
3	GUIDE	816725616	9.71	12788	0.045	-0.049	0.116	0.187	255.331515	-22.355374	1466.69	1959.27
4	GUIDE	892732184	7.93	12795	-0.049	-0.039	0.069	0.108	255.982486	-22.880947	-893.24	318.80
5	GUIDE	892739296	8.18	12794	-0.045	0.006	0.080	0.137	255.536318	-23.288124	-1956.30	2108.30
6	GUIDE	892755368	9.84	12698	-0.046	0.086	0.155	0.256	256.498414	-22.856757	-1231.46	-1361.04
7	GUIDE	818416400	9.97	12778	0.087	-0.001	0.176	0.303	256.535150	-21.873688	2168.15	-2357.60

2.4 Star Slots

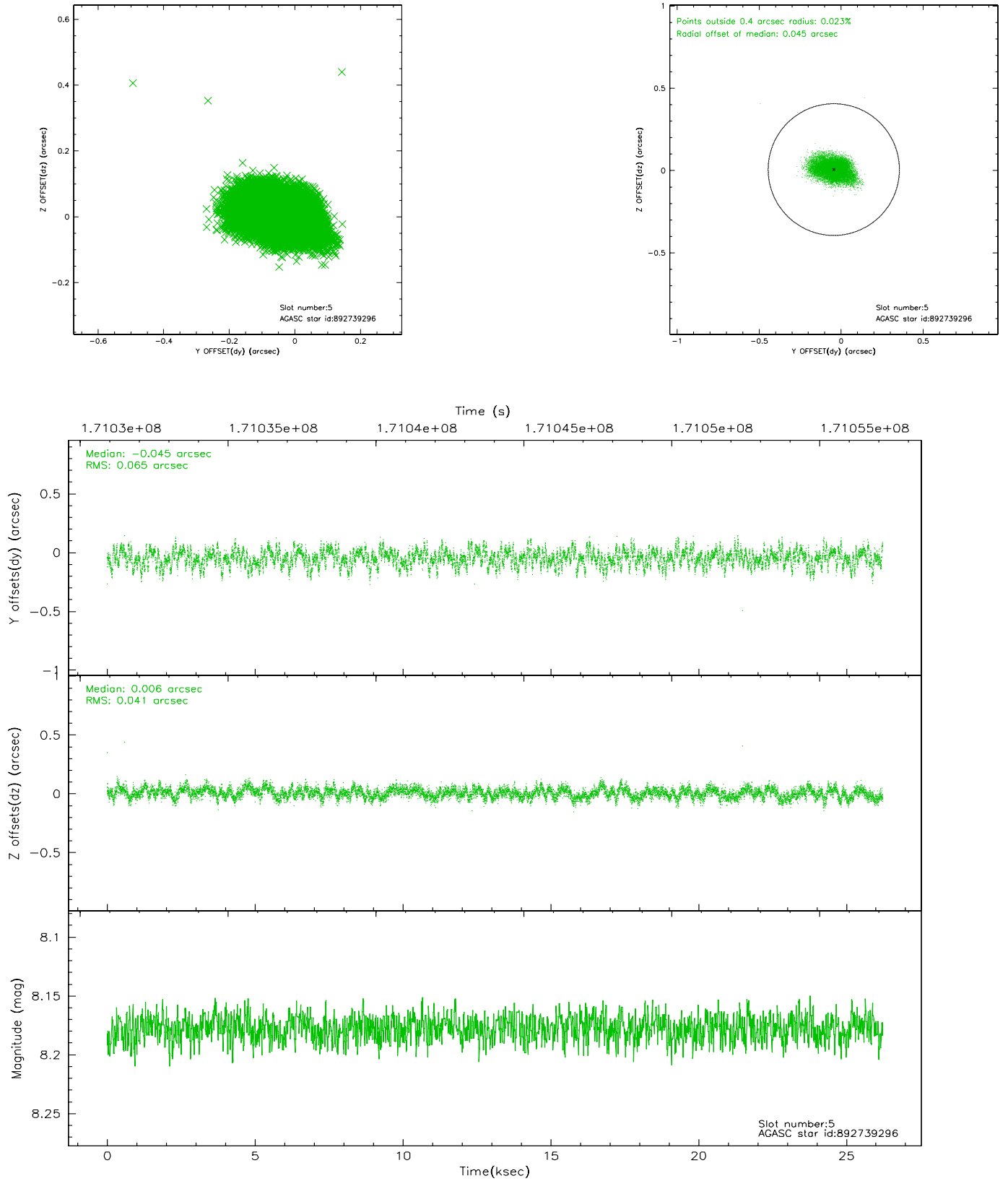
2.4.1 Slot 3



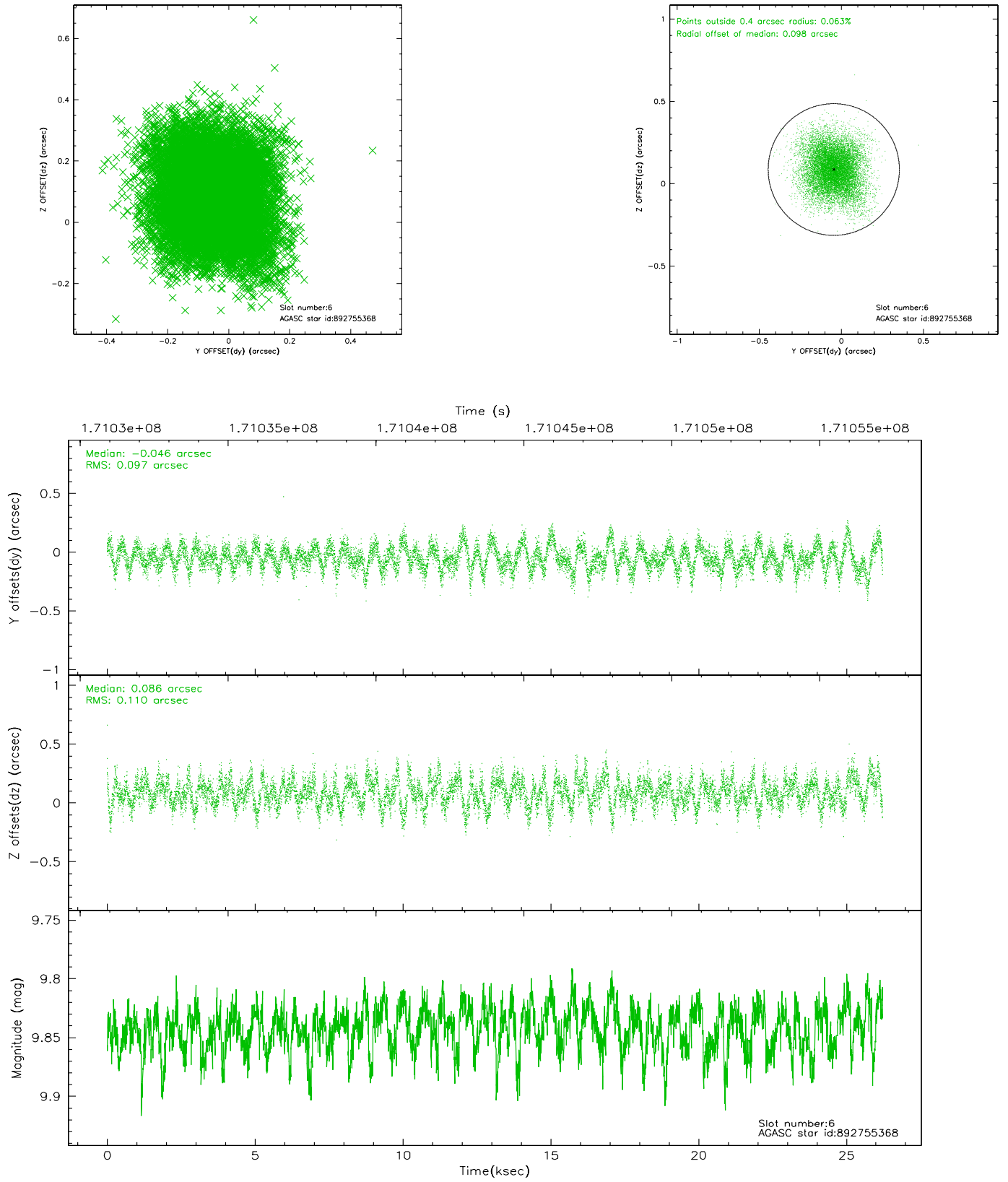
2.4.2 Slot 4



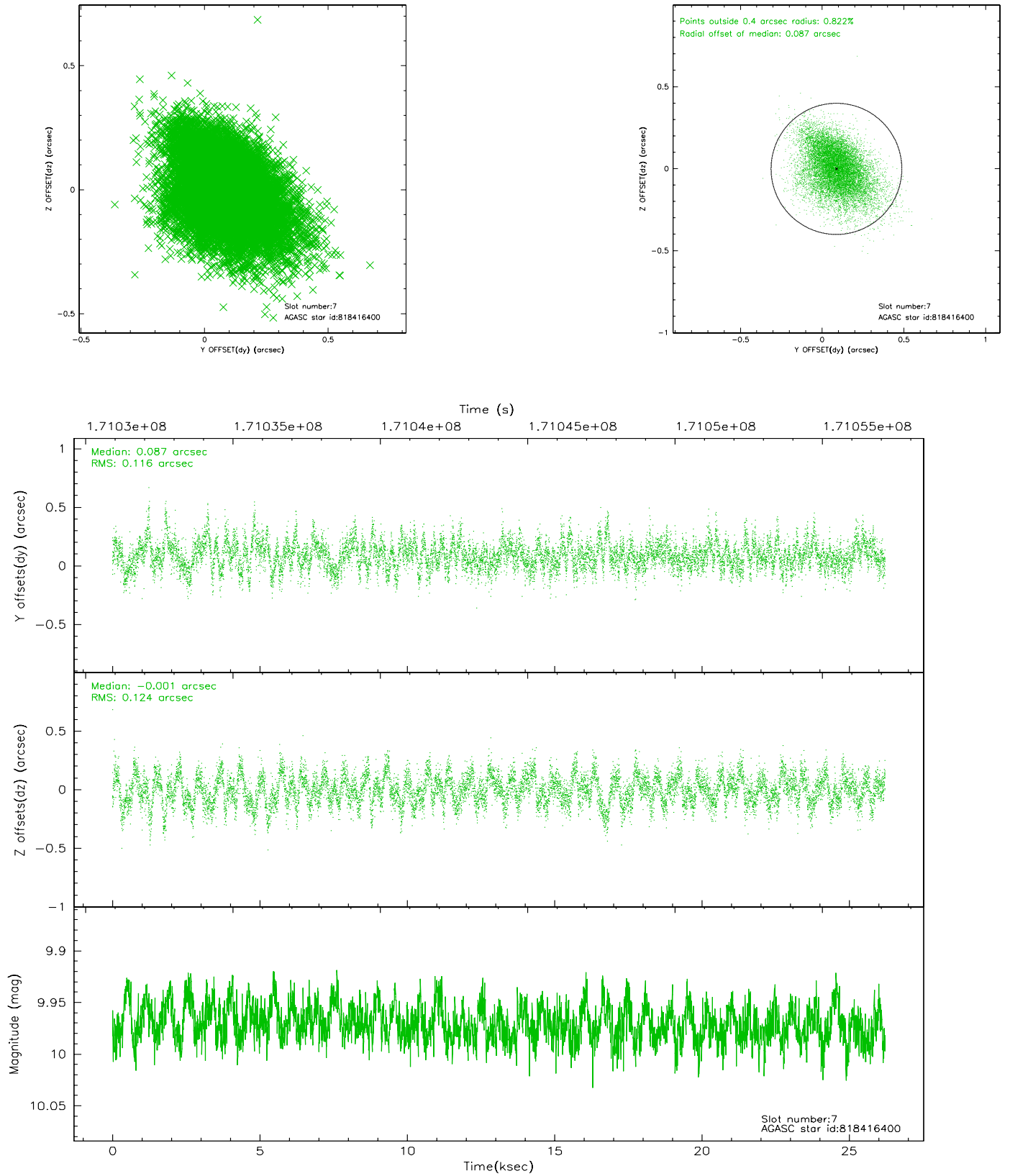
2.4.3 Slot 5



2.4.4 Slot 6

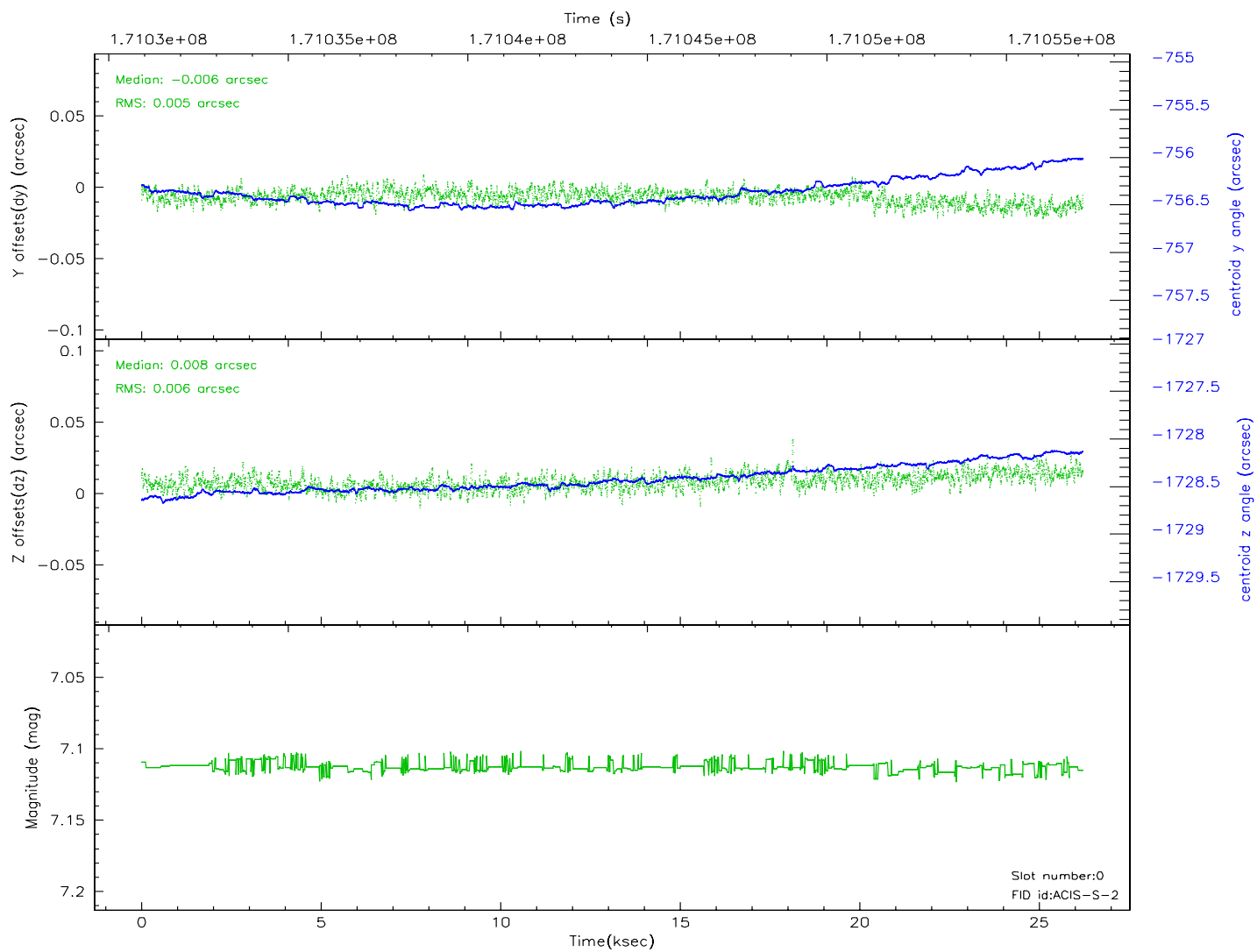
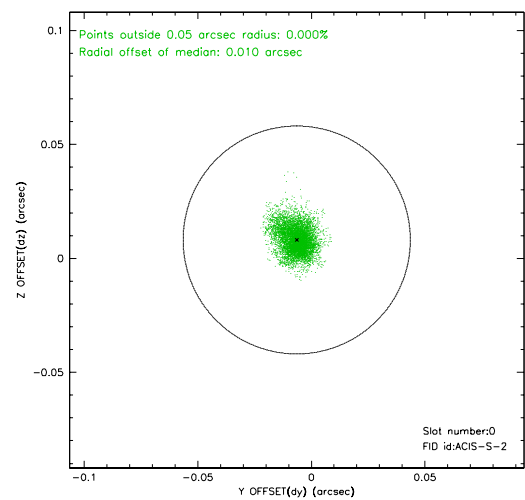
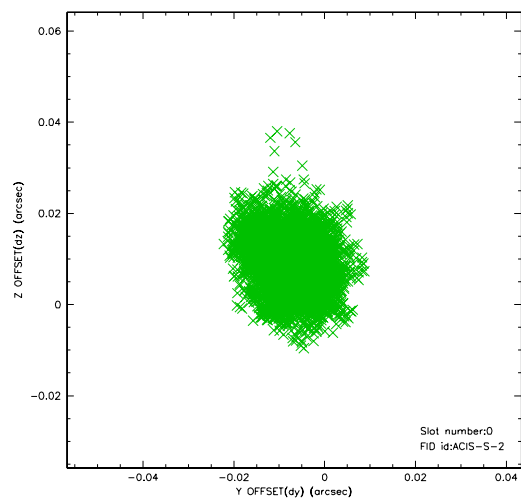


2.4.5 Slot 7

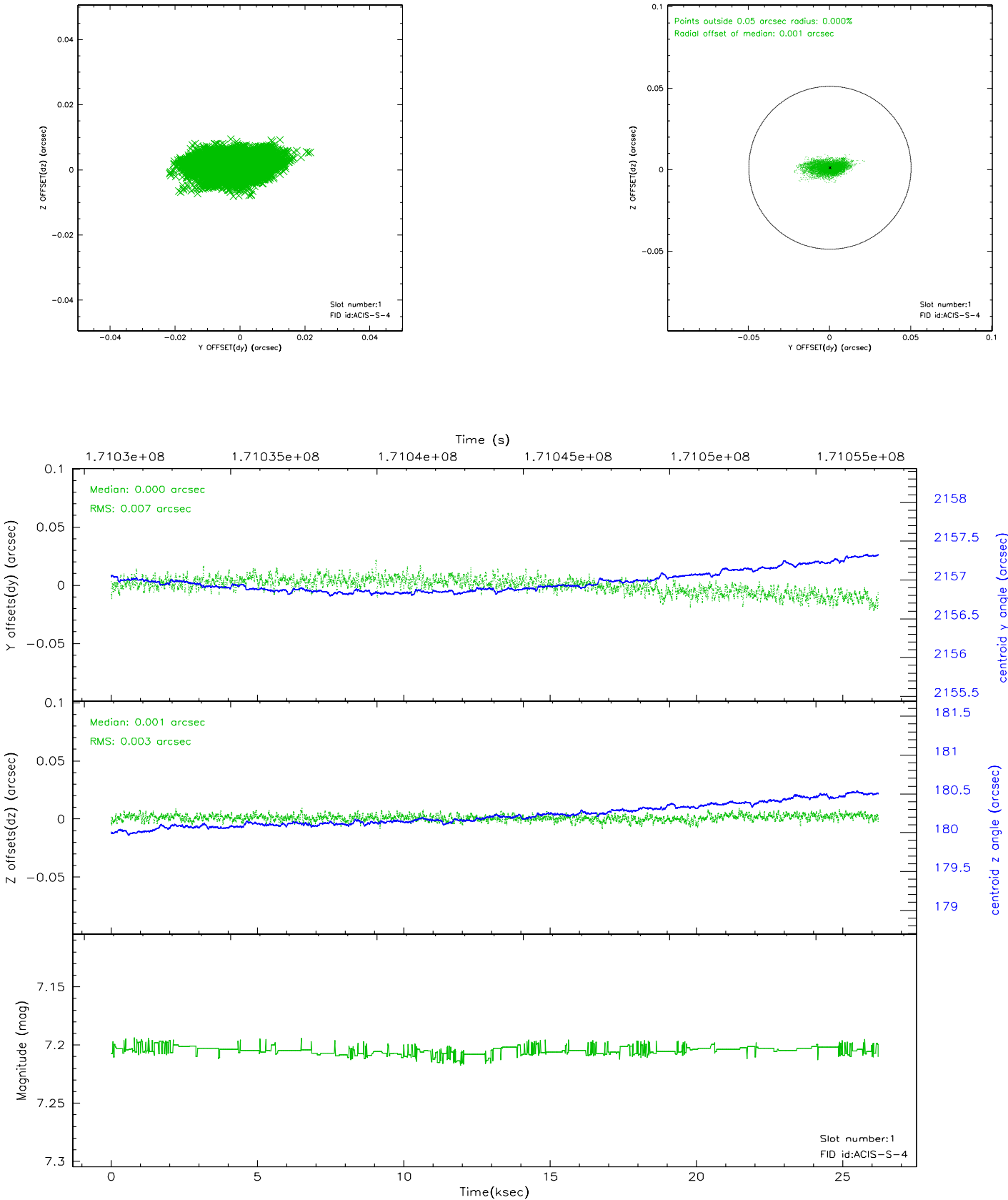


2.5 FID Slots

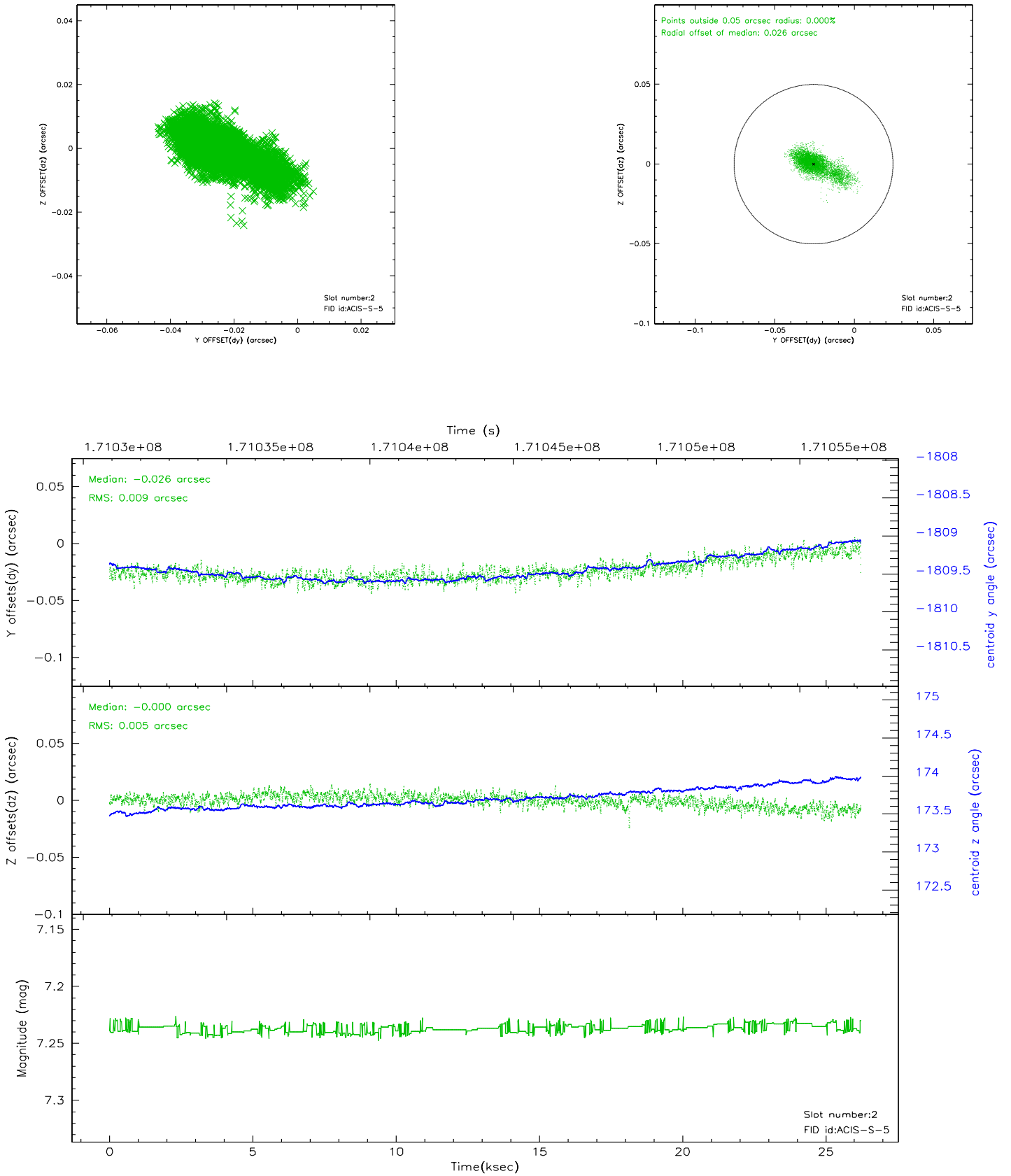
2.5.1 Slot 0



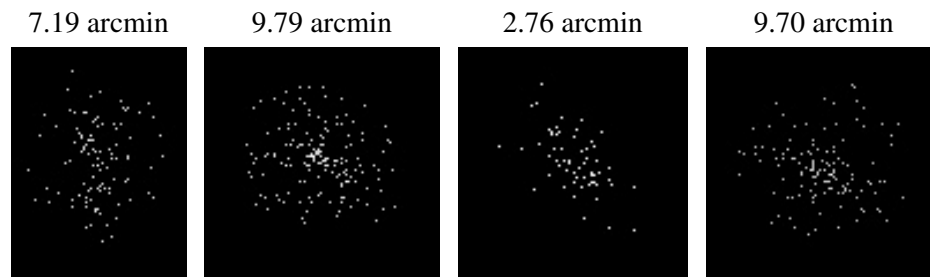
2.5.2 Slot 1



2.5.3 Slot 2



3 Point Sources



A Summary

A.1 Status

V&V Scientist	Beth Sundheim
V&V Date (YYYY-MM-DD)	2006.08.03
V&V Edition	1
V&V Disposition and Status	OK
V&V Charge Time	26.108

A.2 Comments