

# V&V Reference Report

## L2 ASCDS Version : 7.6.8

Observation 3912 - L2 Version 001  
Chandra X-Ray Center

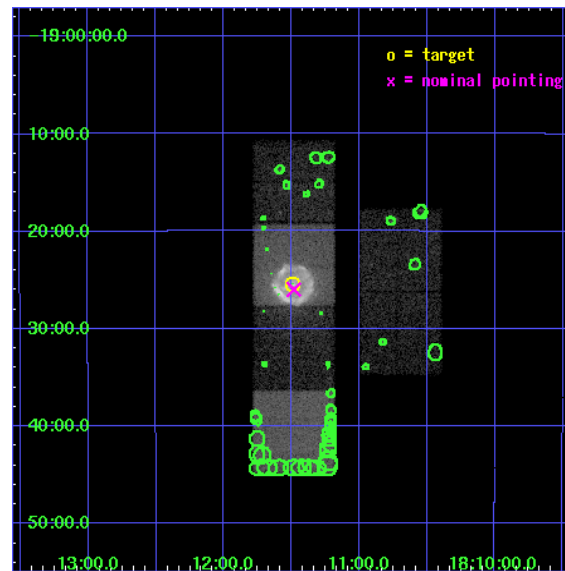
L2 Processing Date : Jul 6 2006

## Contents

<b>1</b>	<b>Front</b>	<b>2</b>
<b>2</b>	<b>OBI</b>	<b>3</b>
2.1	OBI . . . . .	3
2.1.1	Images . . . . .	3
2.1.2	Bias . . . . .	3
2.1.3	Parameters . . . . .	4
2.1.4	Events . . . . .	4
2.2	Compared Parameters . . . . .	5
2.3	Aspect . . . . .	6
2.4	Star Slots . . . . .	9
2.4.1	Slot 3 . . . . .	9
2.4.2	Slot 4 . . . . .	10
2.4.3	Slot 5 . . . . .	11
2.4.4	Slot 6 . . . . .	12
2.4.5	Slot 7 . . . . .	13
2.5	FID Slots . . . . .	14
2.5.1	Slot 0 . . . . .	14
2.5.2	Slot 1 . . . . .	15
2.5.3	Slot 2 . . . . .	16
<b>3</b>	<b>Point Sources</b>	<b>17</b>
<b>A</b>	<b>Summary</b>	<b>18</b>
A.1	Status . . . . .	18
A.2	Comments . . . . .	18

# 1 Front

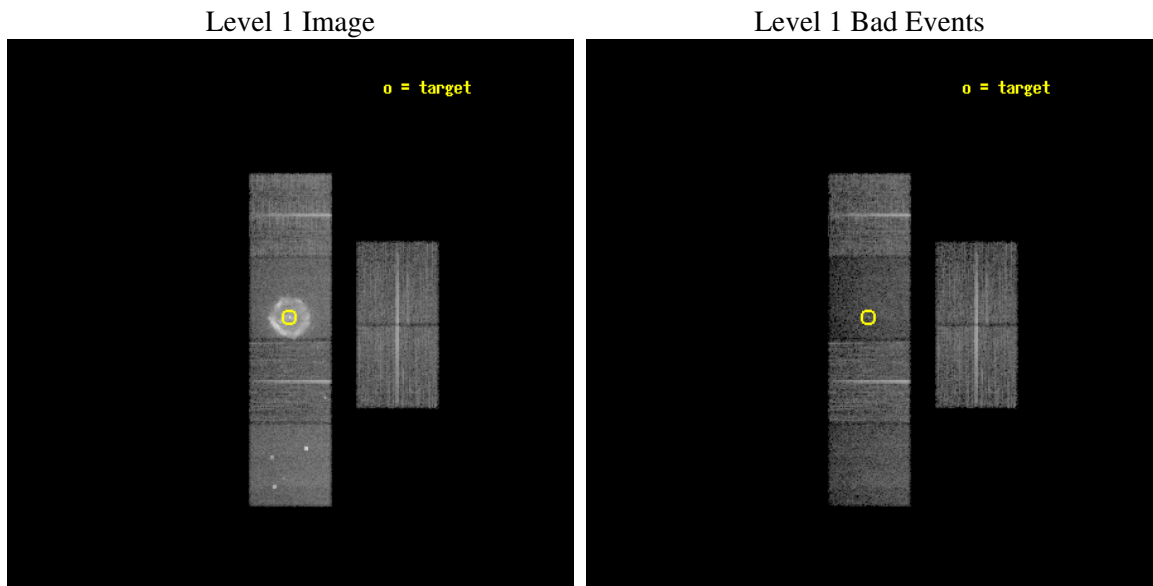
seq_num	500391
obs_id	3912
title	THE DYNAMICS OF THE PULSAR WIND NEBULA IN G11.2-0.3
observer	Dr. Mallory Roberts
object	G11.2-0.3
dtcycle	0
cycle	P
ra_targ	272.8725
dec_targ	-19.423611
ra_nom	272.8707449184
dec_nom	-19.433124117932
roll_nom	270.06068554765
revision	2
ontime	14863.999944627
livetime	14675.783027302
ontime2	14860.758974344
ontime3	14863.999944627
ontime5	14863.999944627
ontime6	14863.999944627
ontime7	14863.999944627
ontime8	14863.999944627
l2events	186254



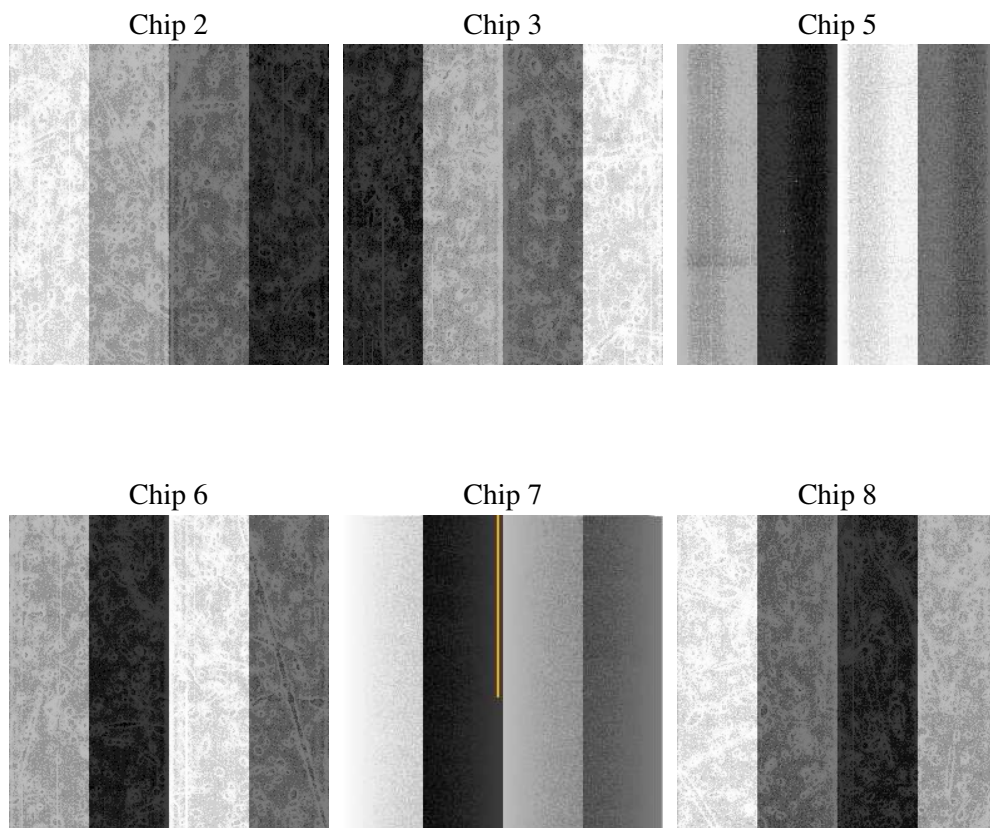
## 2 OBI

### 2.1 OBI

#### 2.1.1 Images



#### 2.1.2 Bias



### 2.1.3 Parameters

obi_num	0
ascdsver	7.6.8
caldbver	3.2.2
date	2006-07-06T03:35:57
revision	2

sched_exp_time	14832.000000
ontime	14869.725807369
ontime2	14866.484837085
ontime3	14869.725807369
ontime5	14869.72583729
ontime6	14869.725807369
ontime7	14869.725807369
ontime8	14869.725807369
l1events	560412

### 2.1.4 Events

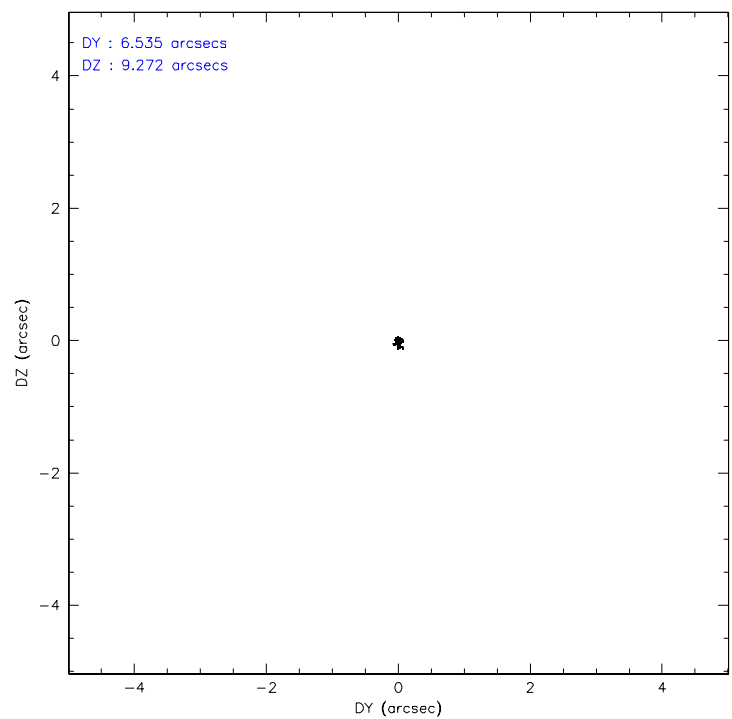
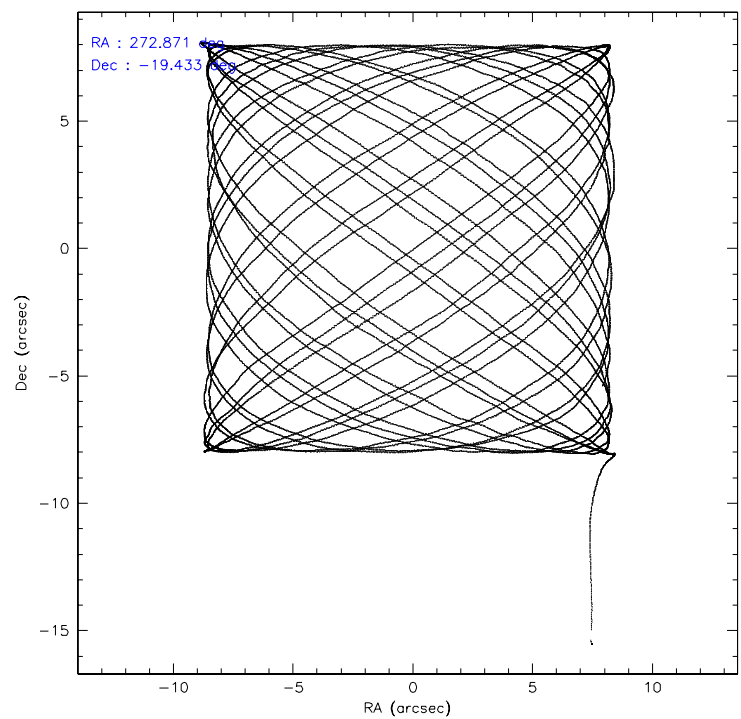
	ccd 2	ccd 3	ccd 5	ccd 6	ccd 7	ccd 8
level 1 events	81182	71924	90204	74536	149925	92641
rejected events	72712	63198	43161	63093	38261	70377
rejected %	89%	87%	47%	84%	25%	75%

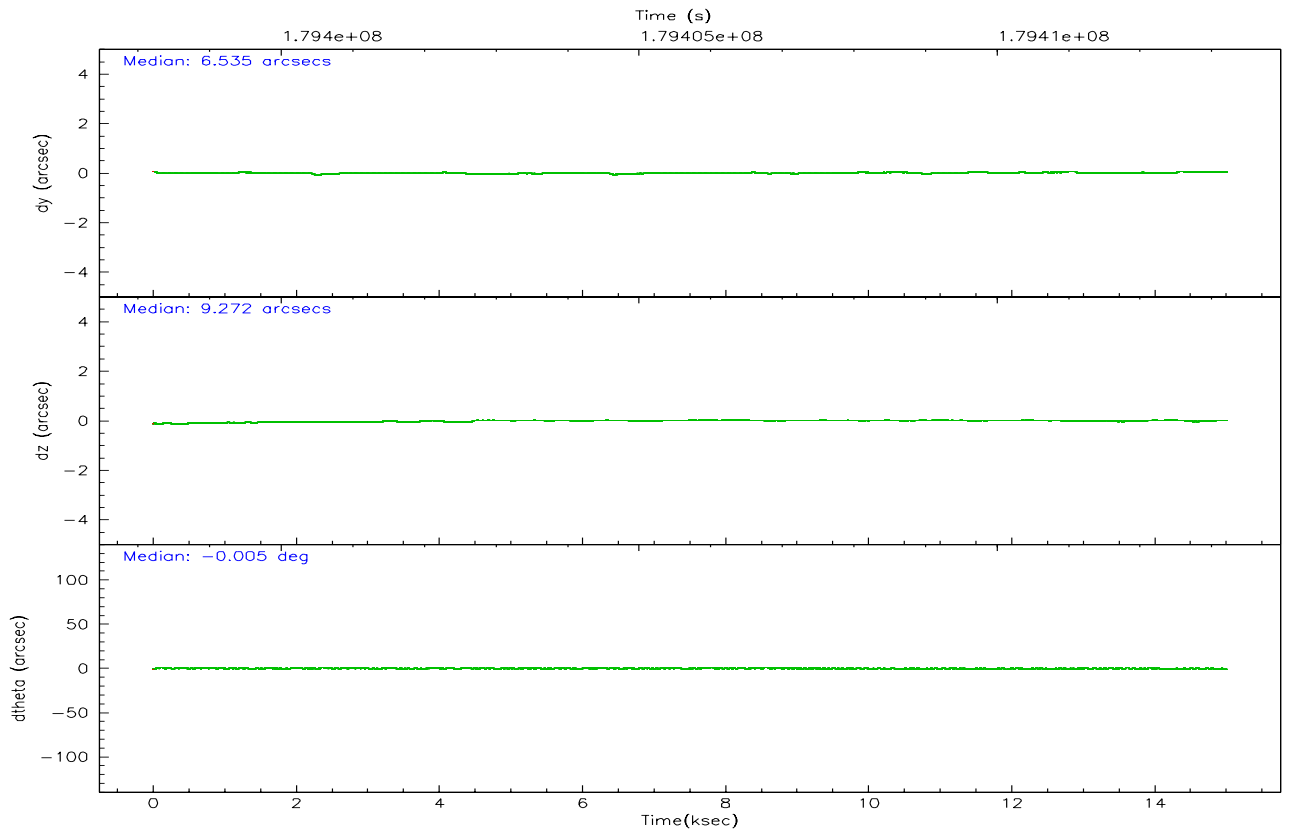
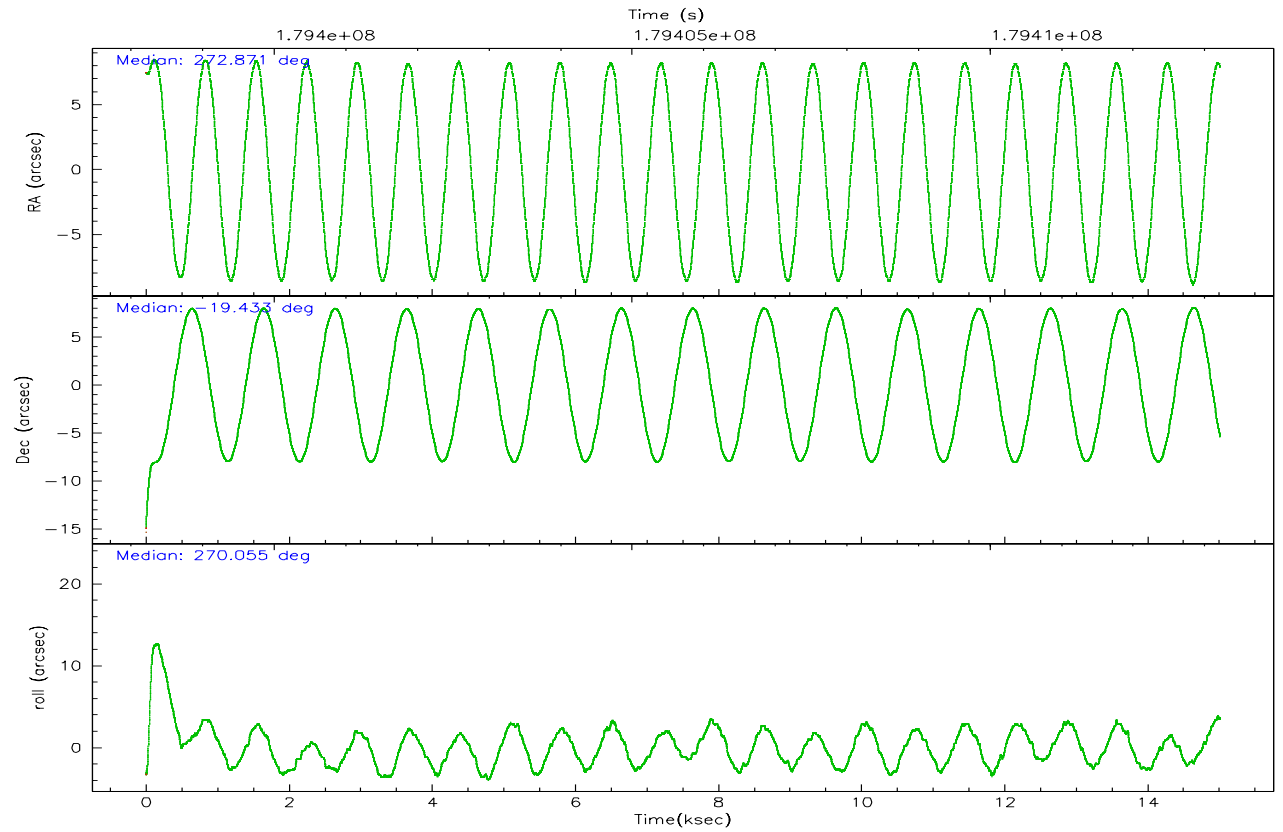
	ccd 2	ccd 3	ccd 5	ccd 6	ccd 7	ccd 8
grade 0 events	3810	4188	6093	6045	19955	7675
	4%	5%	6%	8%	13%	8%
grade 1 events	38	44	78	47	56	60
	0%	0%	0%	0%	0%	0%
grade 2 events	1751	1540	14212	1923	31140	4645
	2%	2%	15%	2%	20%	5%
grade 3 events	865	827	1330	960	10889	2335
	1%	1%	1%	1%	7%	2%
grade 4 events	832	841	1210	955	10529	2302
	1%	1%	1%	1%	7%	2%
grade 5 events	1928	2331	4762	2441	5987	3653
	2%	3%	5%	3%	3%	3%
grade 6 events	1217	1334	24208	1562	39172	5308
	1%	1%	26%	2%	26%	5%
grade 7 events	70741	60819	38311	60603	32197	66663
	87%	84%	42%	81%	21%	71%

## 2.2 Compared Parameters

Parameter	Planned	Actual	Parameter	Planned	Actual
Instrument	ACIS	ACIS	Obspar format version number	6	6
Detector	ACIS-235678	ACIS-235678	Obspar file type	PREDICTED	ACTUAL
Grating	NONE	NONE	Obspar update status	NONE	UPDATED
Data mode	VFAINT	VFAINT	On-chip summing requested	N	N
Observation mode	POINTING	POINTING	Subarray requested	NONE	NONE
Pointing RA	272.855912	272.8707449184	Alternating exposures requested	N	N
Pointing Dec	-19.409743	-19.43312411793169	Primary exposure time	0.000000	3.2
Pointing Roll	269.899139	270.0606855476524			
SIM focus pos (mm)	-0.684267	-0.6828225247311905			
SIM defocus (mm)	0	0.001444936568705701			
SIM translation stage pos (mm)	-190.132523	-190.1400660498719			
SIM translation stage offset (mm)	0	0.00754346686406393			
Observation start time	179398389.184000	179397391.18272			
Observation start date	2003-09-08T08:52:05	2003-09-08T08:36:31			
Observation end time	179413221.184000	179414105.85844			
Observation end date	2003-09-08T12:59:17	2003-09-08T13:15:05			
Read mode	TIMED	TIMED			

## 2.3 Aspect





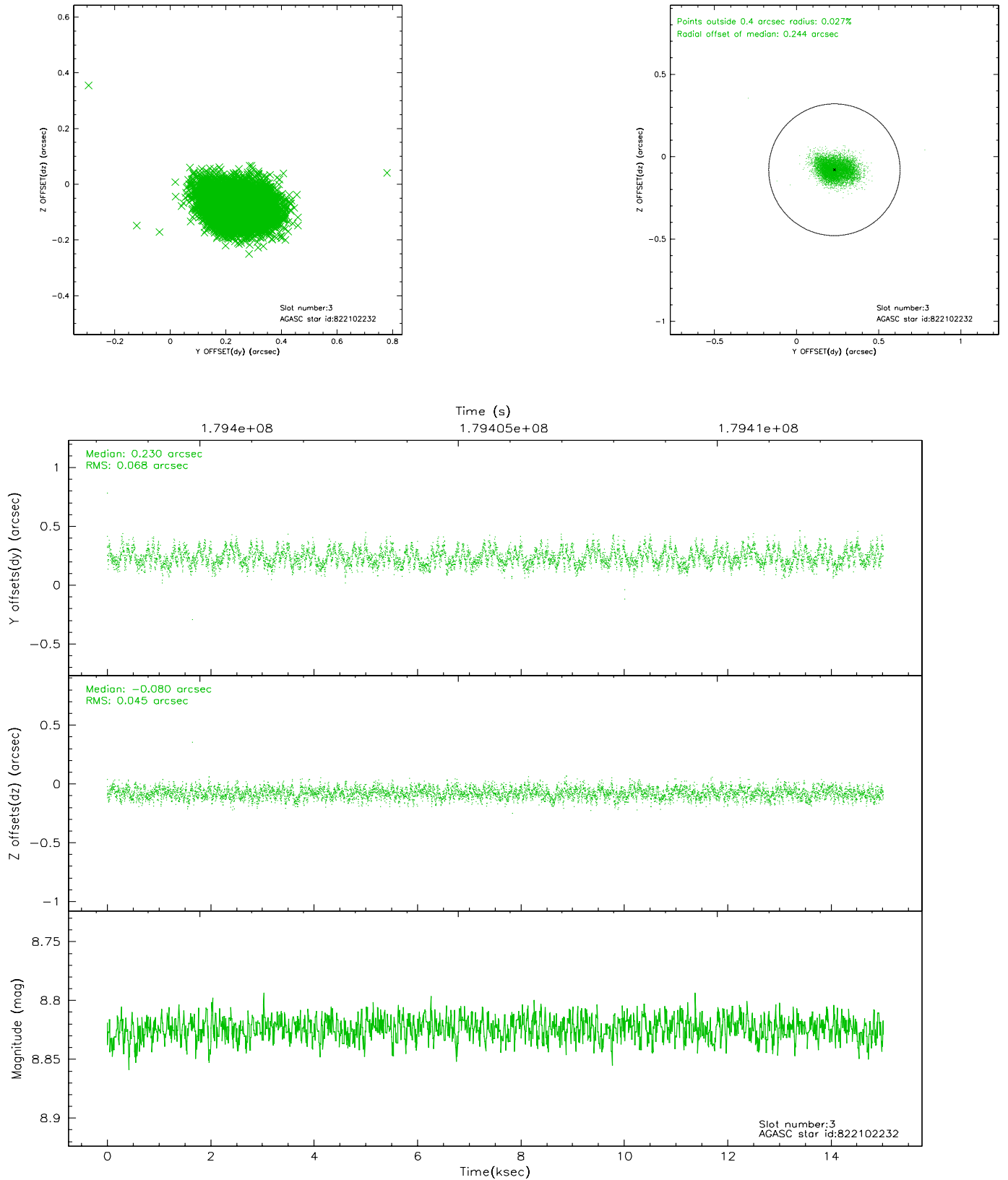
### Slot Statistics

slot	status	id	mag	n_pts	med_dy	med_dz	dr1	dr2	ra	dec	mean_y	mean_z
0	FID	ACIS-S-1	7.18	3663	0.010	0.018	0.006	0.010	0.000000	0.000000	936.75	-1726.11
1	FID	ACIS-S-5	7.23	3662	-0.026	0.021	0.006	0.010	0.000000	0.000000	-1812.09	171.17
2	FID	ACIS-S-6	7.35	3663	-0.006	-0.027	0.007	0.011	0.000000	0.000000	401.99	815.40
3	GUIDE	822102232	8.82	7321	0.230	-0.080	0.086	0.139	272.350923	-20.034935	2257.03	-1703.91
4	GUIDE	822090352	8.62	7323	-0.268	-0.124	0.086	0.130	272.203907	-18.976234	-1552.00	-2222.96
5	GUIDE	822102528	9.31	7319	0.248	-0.083	0.097	0.156	272.446853	-20.048949	2305.79	-1379.54
6	GUIDE	822085152	9.00	7320	-0.167	0.086	0.075	0.119	272.974056	-19.057083	-1269.70	399.56
7	GUIDE	822092816	9.50	7315	-0.046	0.199	0.087	0.142	273.207975	-19.445846	129.09	1195.64

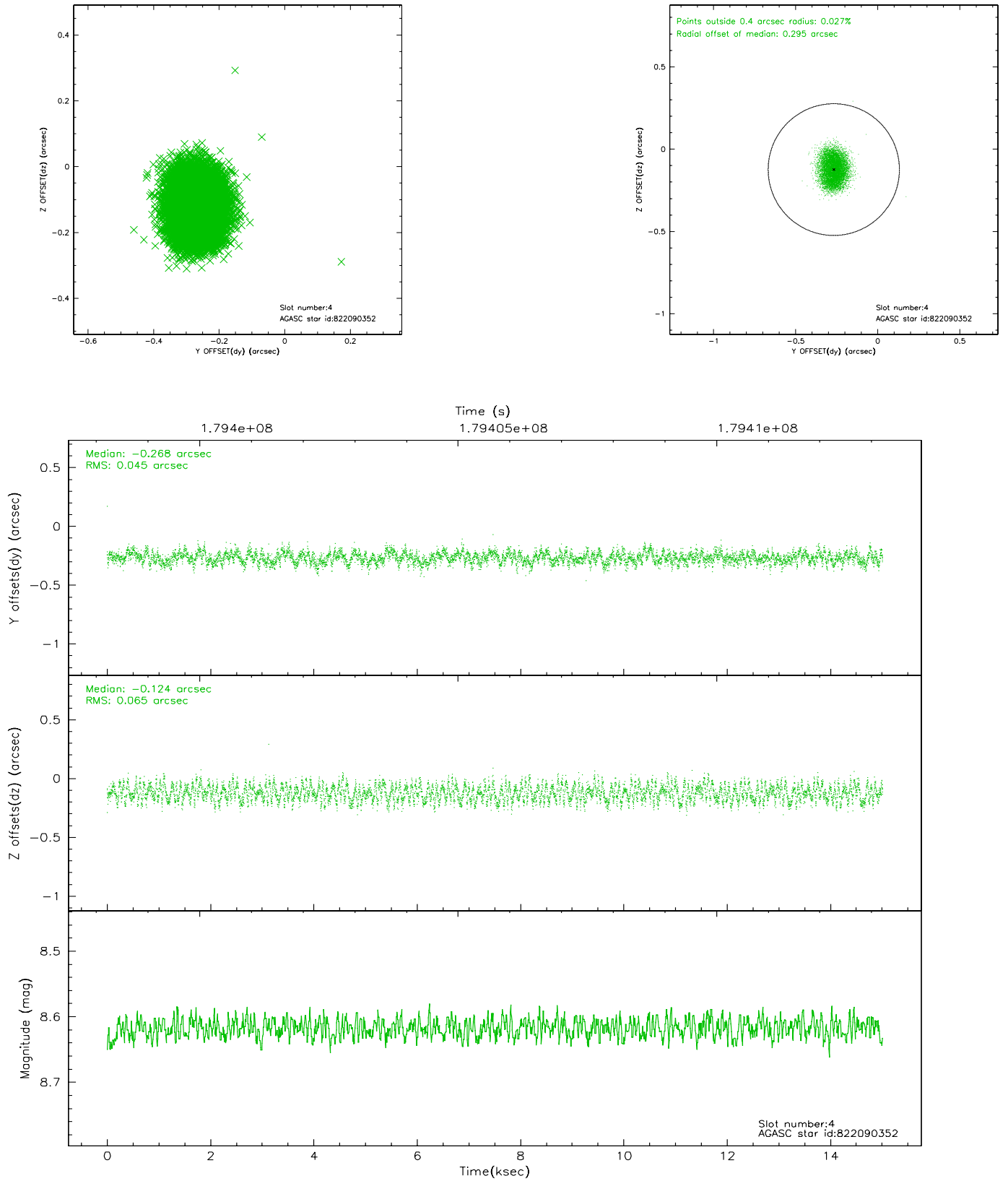


## 2.4 Star Slots

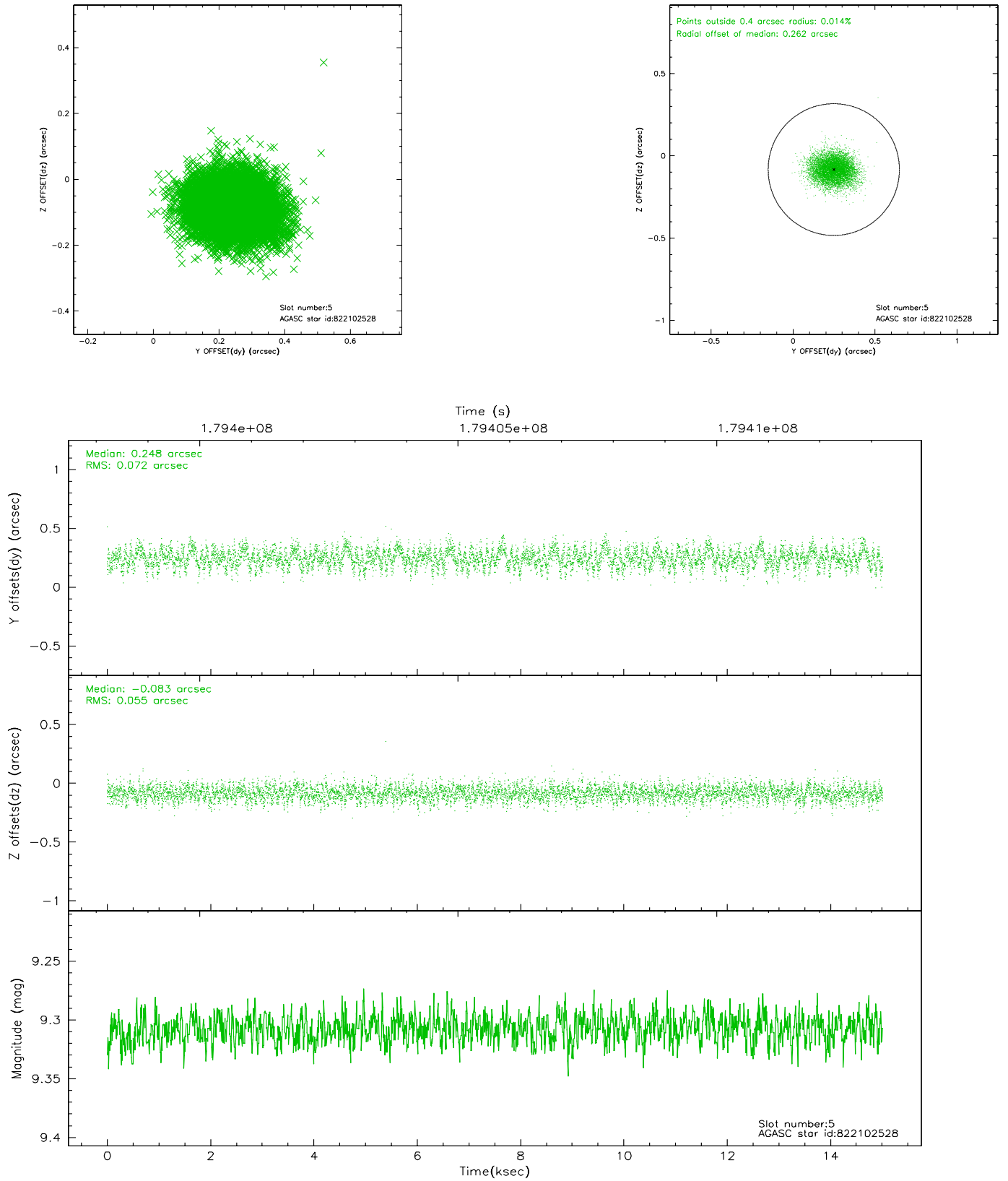
### 2.4.1 Slot 3



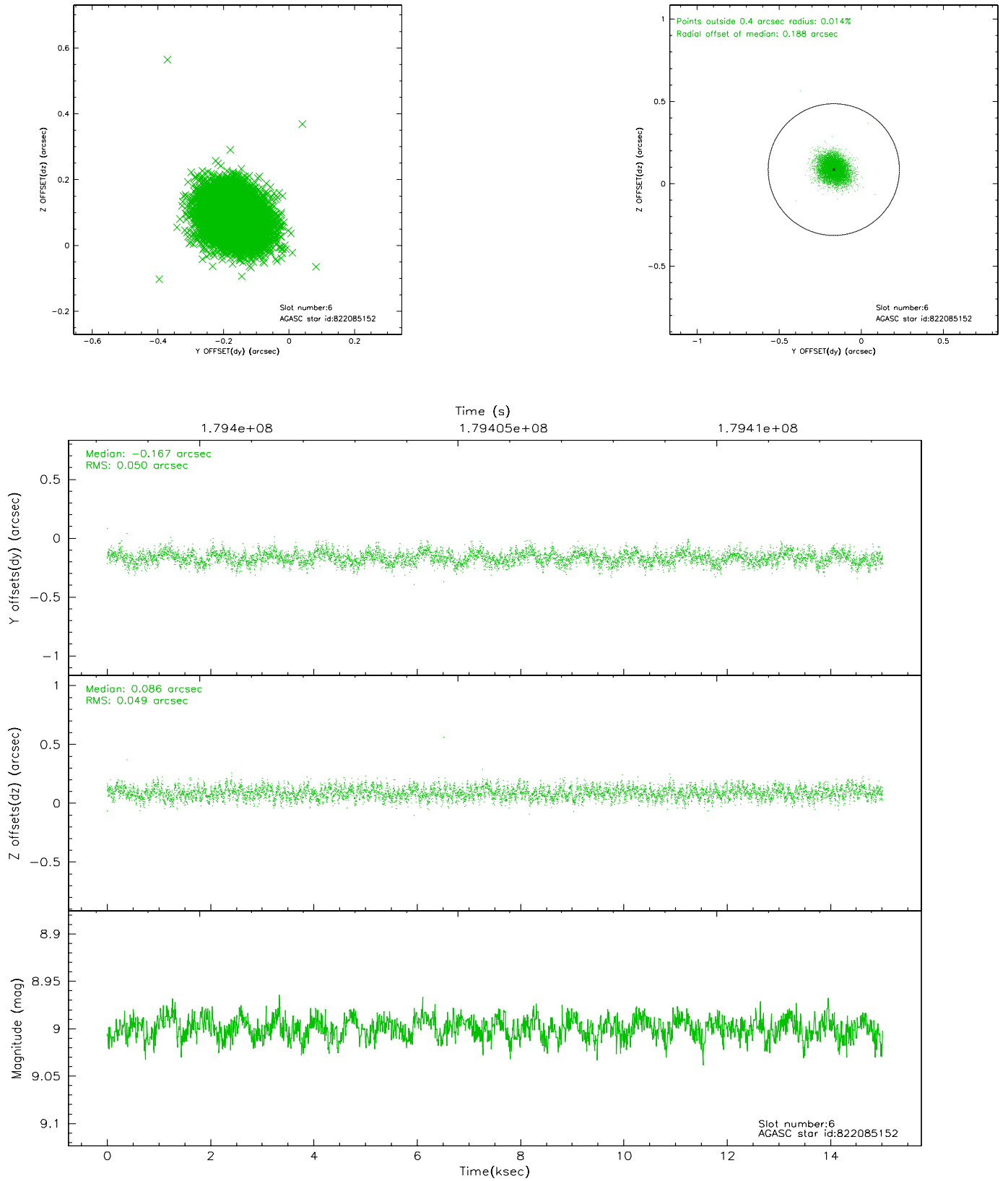
## 2.4.2 Slot 4



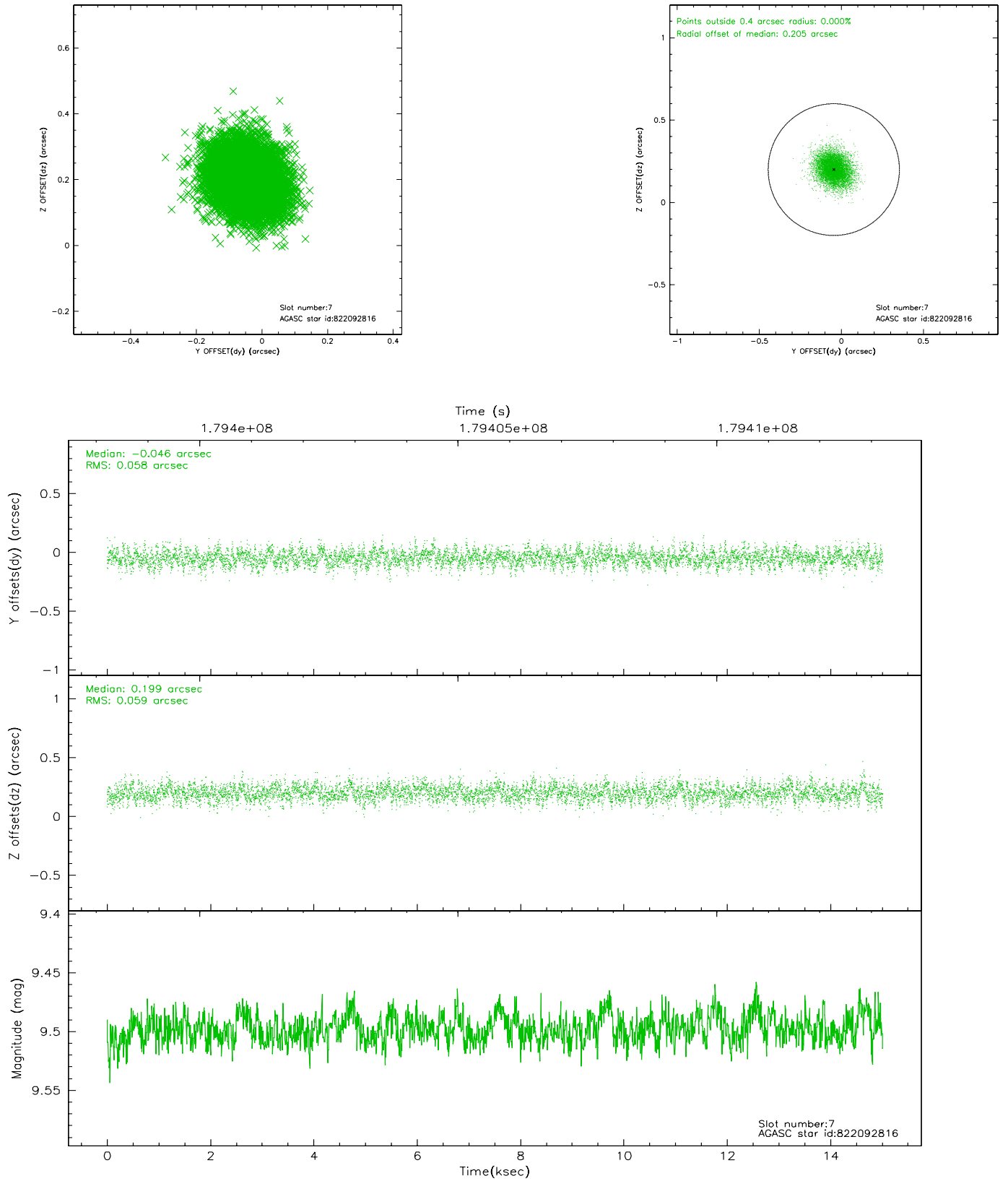
### 2.4.3 Slot 5



## 2.4.4 Slot 6

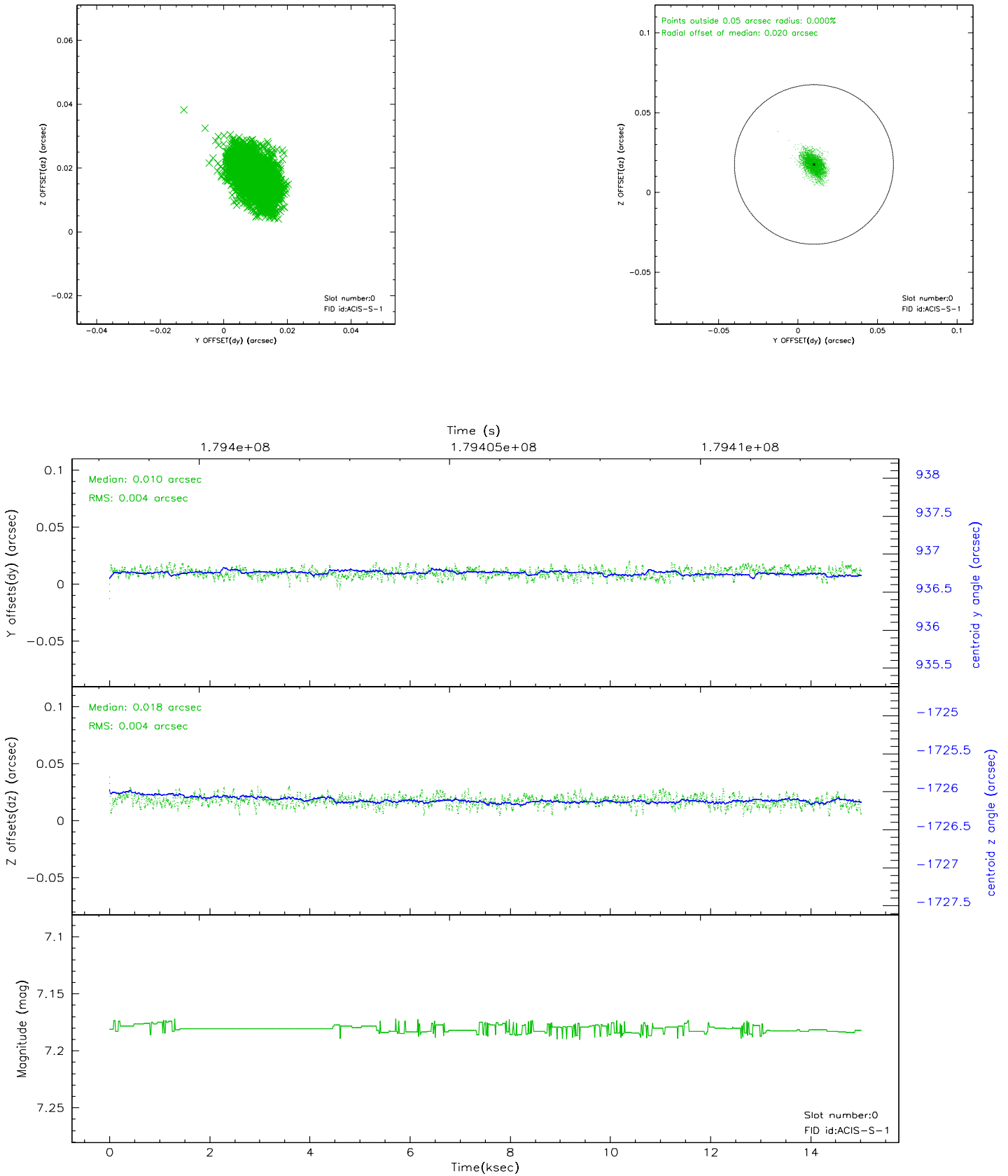


## 2.4.5 Slot 7

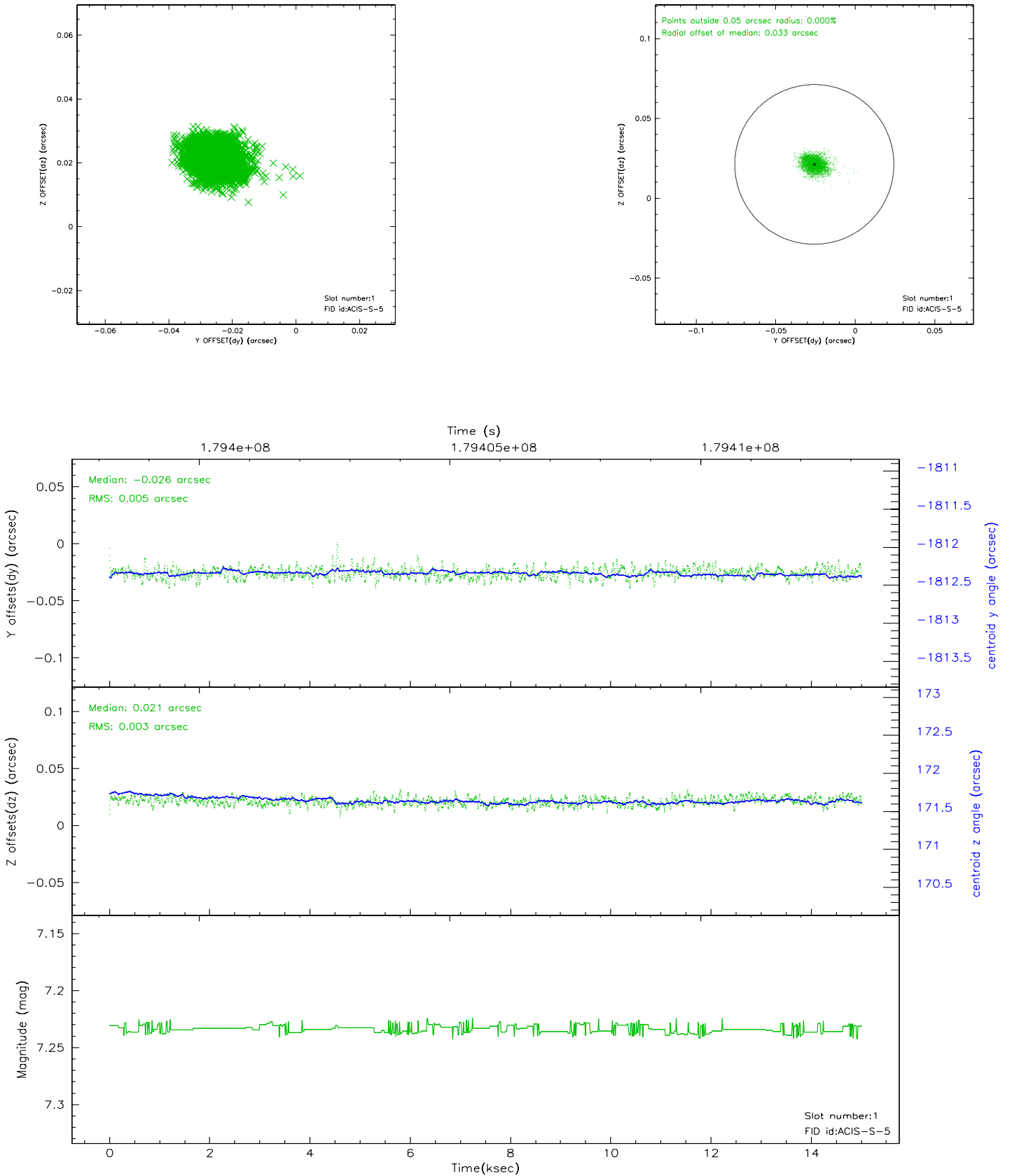


## 2.5 FID Slots

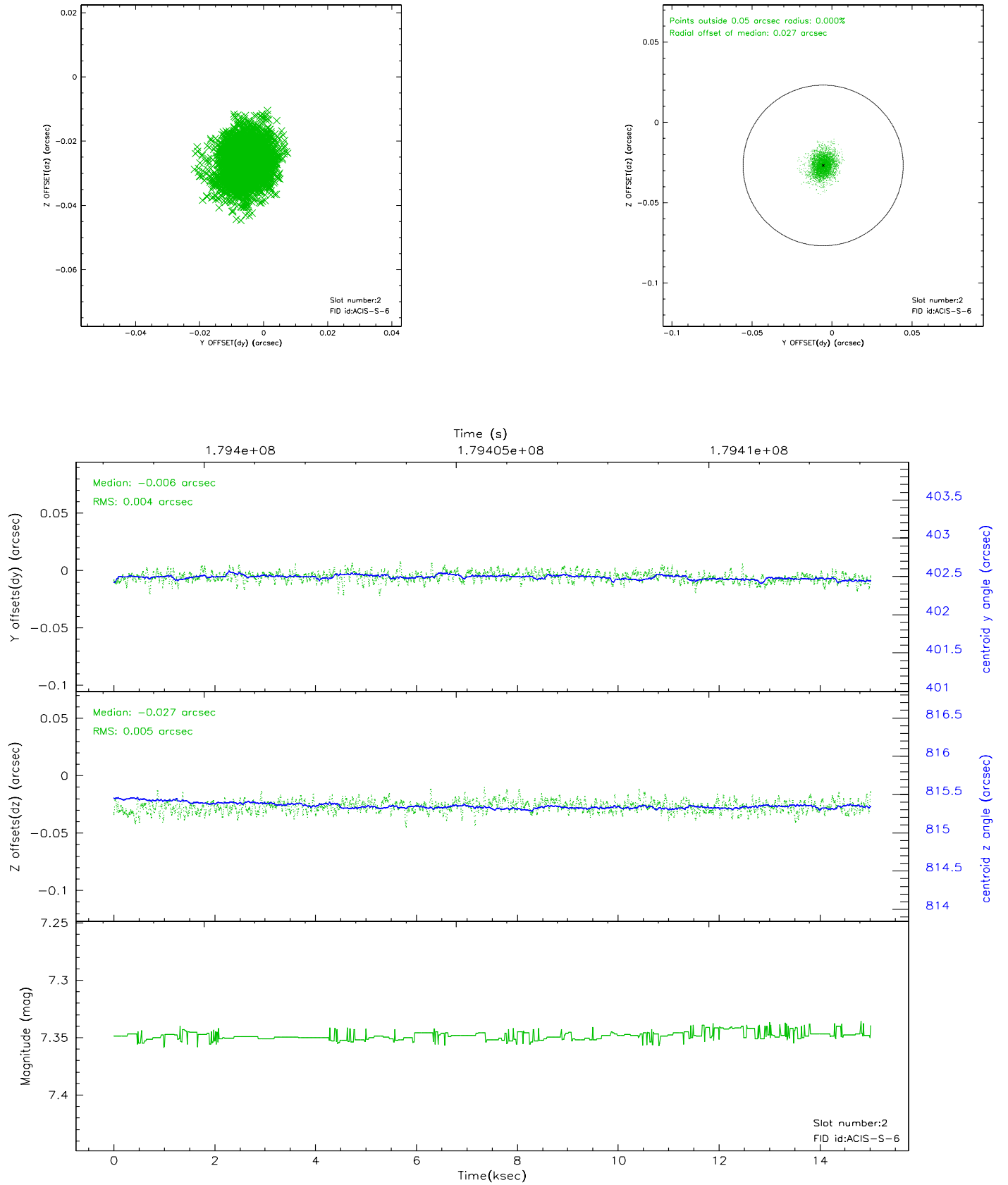
### 2.5.1 Slot 0



## 2.5.2 Slot 1

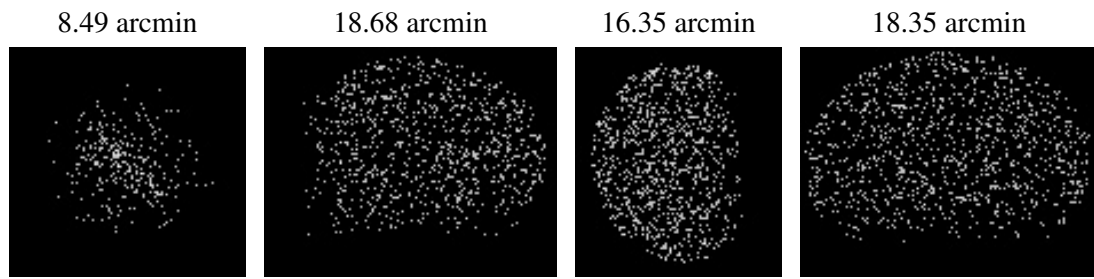


### 2.5.3 Slot 2





### 3 Point Sources



## A Summary

### A.1 Status

V&V Scientist	Beth Sundheim
V&V Date (YYYY-MM-DD)	2006.07.06
V&V Edition	1
V&V Disposition and Status	OK
V&V Charge Time	14.863

### A.2 Comments