

V&V Reference Report

L2 ASCDS Version : 7.6.8

Observation 3899 - L2 Version 001
Chandra X-Ray Center

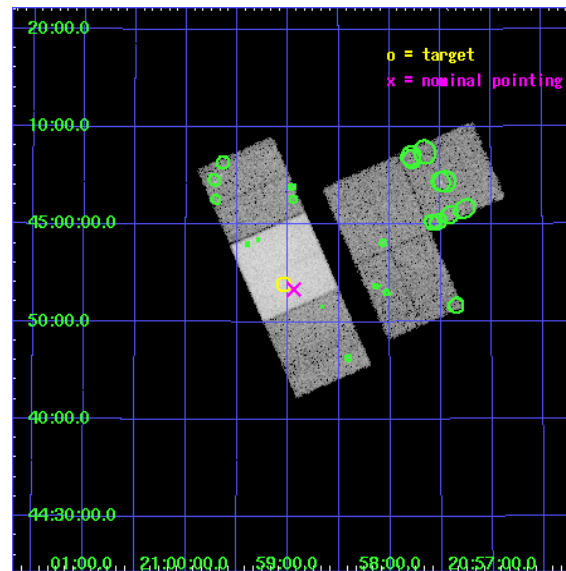
L2 Processing Date : Jul 1 2006

Contents

1	Front	2
2	OBI	3
2.1	OBI	3
2.1.1	Images	3
2.1.2	Bias	3
2.1.3	Parameters	4
2.1.4	Events	4
2.2	Compared Parameters	5
2.3	Aspect	6
2.4	Star Slots	9
2.4.1	Slot 3	9
2.4.2	Slot 4	10
2.4.3	Slot 5	11
2.4.4	Slot 6	12
2.4.5	Slot 7	13
2.5	FID Slots	14
2.5.1	Slot 0	14
2.5.2	Slot 1	15
2.5.3	Slot 2	16
3	Point Sources	17
A	Summary	18
A.1	Status	18
A.2	Comments	18

1 Front

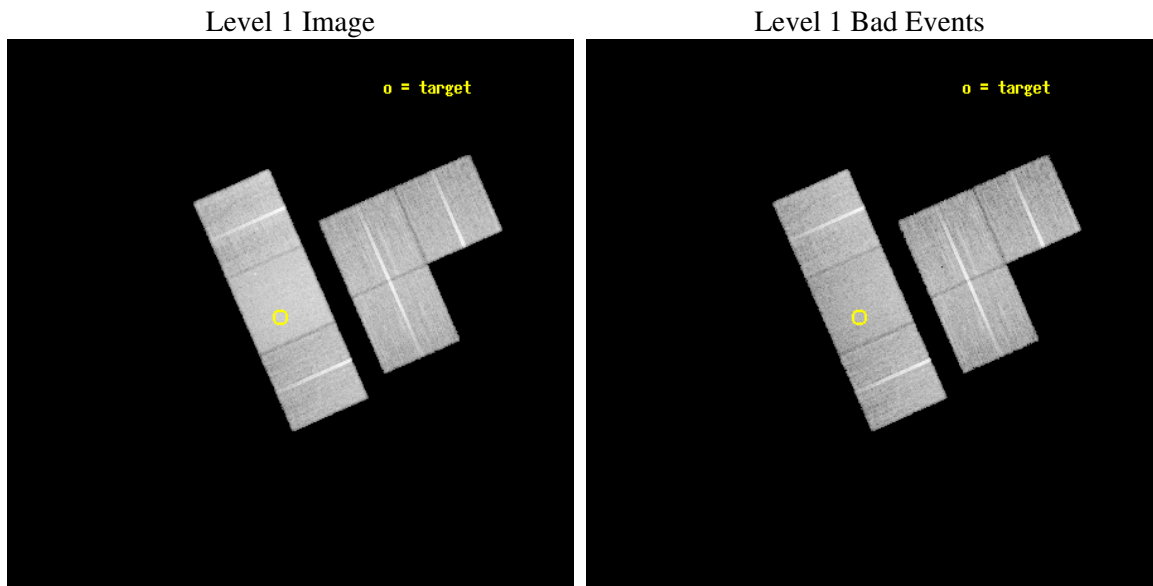
seq_num	500378
obs_id	3899
title	EXPLORING THE ZOO OF NEUTRON STARS: HUNTING CGPS SNRS WITH CHANDRA
observer	Prof. Samar Safi-Harb
object	G85.9-0.6
dtcycle	0
cycle	P
ra_targ	314.759167
dec_targ	44.898167
ra_nom	314.7355030333
dec_nom	44.889196679914
roll_nom	246.22018182117
revision	2
ontime	20147.199924946
livetime	19892.083948309
ontime1	20143.958954662
ontime2	20147.199924946
ontime3	20143.958934754
ontime6	20147.199924946
ontime7	20147.199924946
ontime8	20147.199924946
l2events	158346



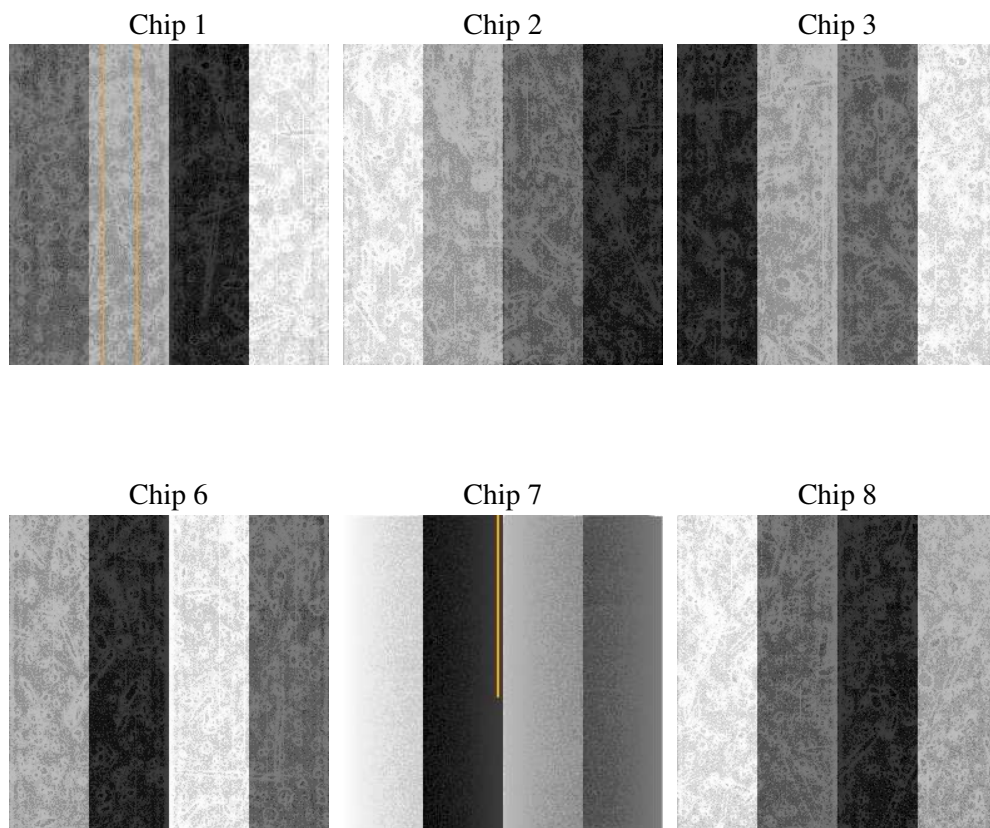
2 OBI

2.1 OBI

2.1.1 Images



2.1.2 Bias



2.1.3 Parameters

obi_num	0
ascdsver	7.6.8
caldsver	3.2.2
date	2006-07-01T16:30:47
revision	2

sched_exp_time	20000.000000
ontime	20152.559935659
ontime1	20149.318965375
ontime2	20155.800935835
ontime3	20152.559965551
ontime6	20152.559935659
ontime7	20152.559935659
ontime8	20155.800935835
l1events	887660

2.1.4 Events

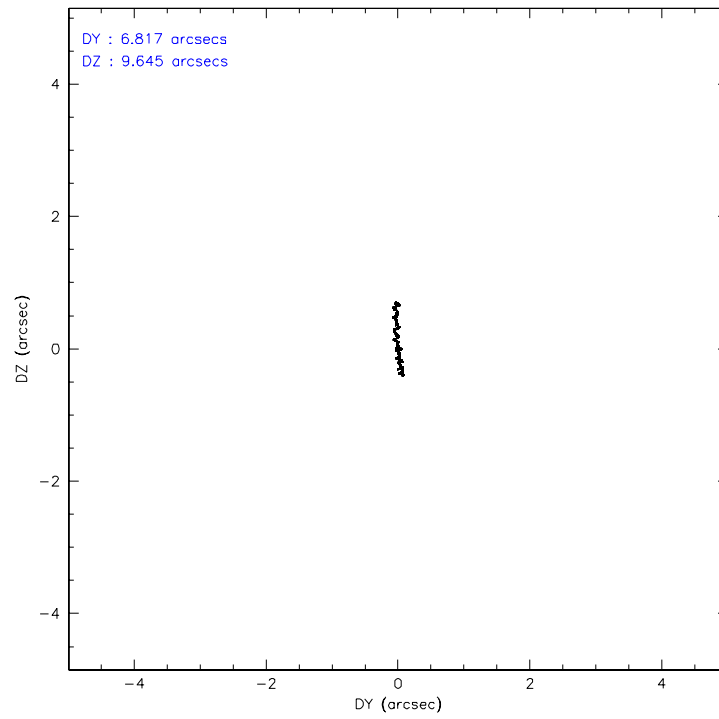
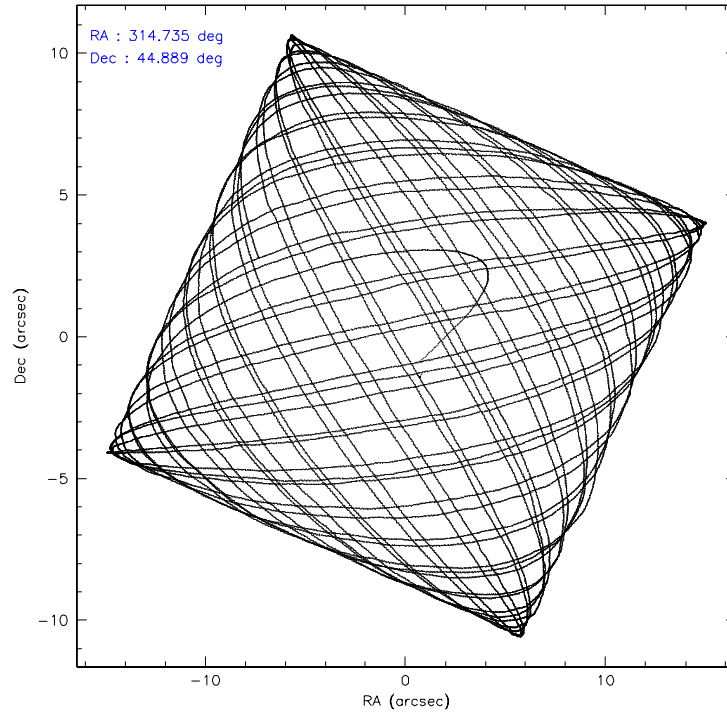
	ccd 1	ccd 2	ccd 3	ccd 6	ccd 7	ccd 8
level 1 events	123992	134117	131859	135011	193143	169538
rejected events	106409	117597	115014	116027	111541	132708
rejected %	85%	87%	87%	85%	57%	78%

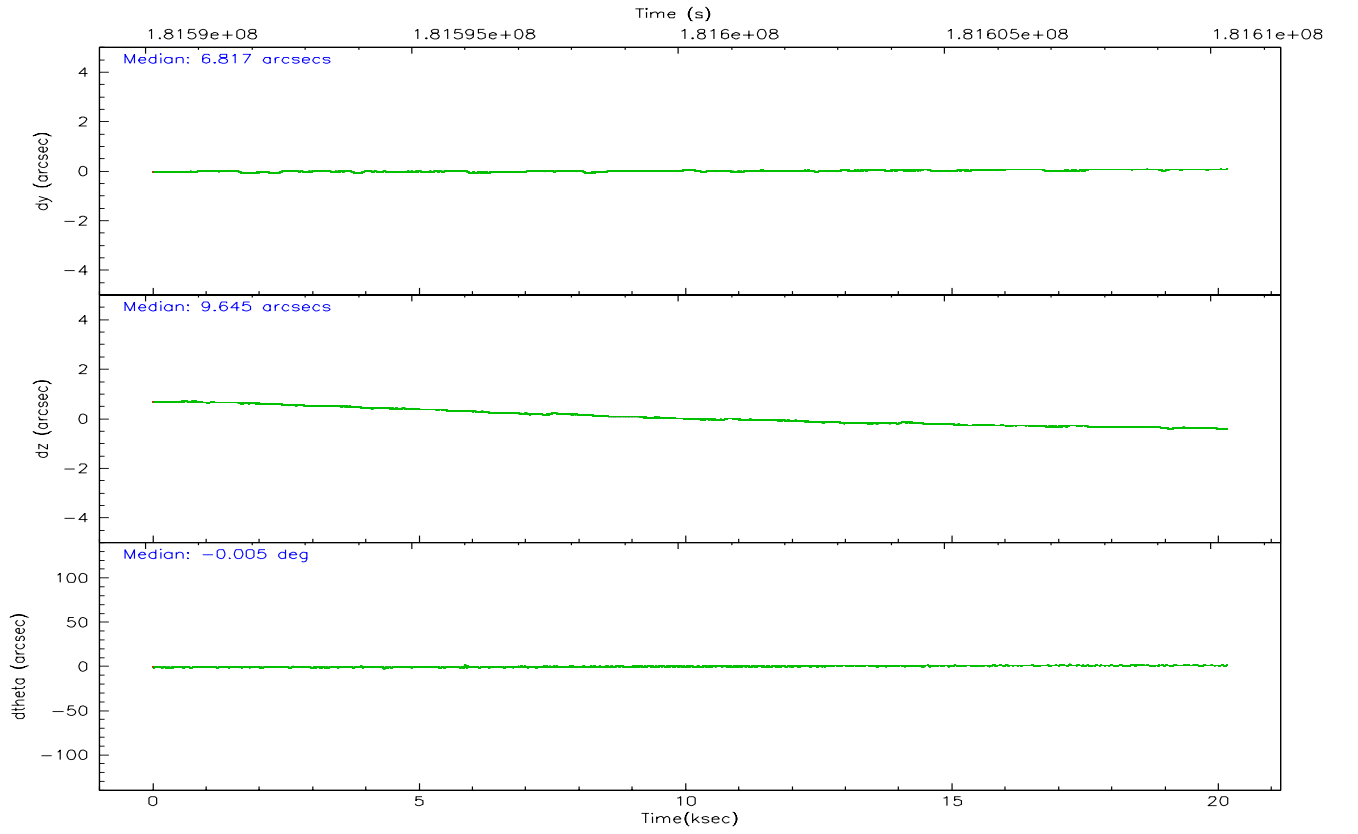
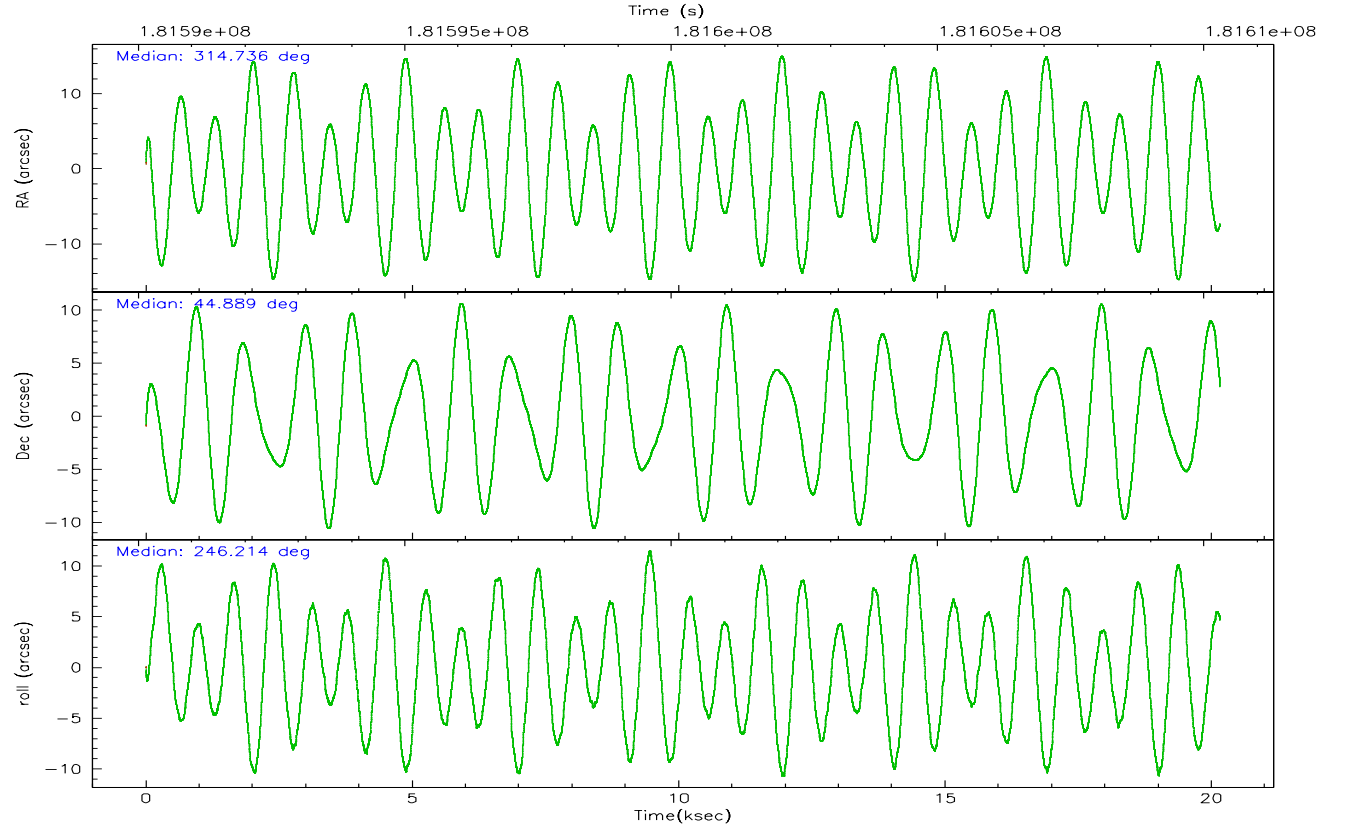
	ccd 1	ccd 2	ccd 3	ccd 6	ccd 7	ccd 8
grade 0 events	7351	7963	8098	9085	6482	12765
	5%	5%	6%	6%	3%	7%
grade 1 events	74	92	78	67	92	118
	0%	0%	0%	0%	0%	0%
grade 2 events	3700	3066	3030	3569	19978	8028
	2%	2%	2%	2%	10%	4%
grade 3 events	1586	1518	1548	1616	4646	3544
	1%	1%	1%	1%	2%	2%
grade 4 events	1663	1462	1500	1583	4520	3436
	1%	1%	1%	1%	2%	2%
grade 5 events	5565	4963	5618	5966	11788	7798
	4%	3%	4%	4%	6%	4%
grade 6 events	3285	2520	2675	3136	45986	9068
	2%	1%	2%	2%	23%	5%
grade 7 events	100768	112533	109312	109989	99651	124781
	81%	83%	82%	81%	51%	73%

2.2 Compared Parameters

Parameter	Planned	Actual	Parameter	Planned	Actual
Instrument	ACIS	ACIS	Obspar format version number	6	6
Detector	ACIS-123678	ACIS-123678	Obspar file type	PREDICTED	ACTUAL
Grating	NONE	NONE	Obspar update status	NONE	UPDATED
Data mode	FAINT	FAINT	On-chip summing requested	N	N
Observation mode	POINTING	POINTING	Subarray requested	NONE	NONE
Pointing RA	314.730824	314.7355030333031	Alternating exposures requested	N	N
Pointing Dec	44.916199	44.88919667991424	Primary exposure time	0.000000	3.2
Pointing Roll	246.066864	246.2201818211678			
SIM focus pos (mm)	-0.684267	-0.6828225247311905			
SIM defocus (mm)	0	0.001444936568705701			
SIM translation stage pos (mm)	-190.132523	-190.1425803651734			
SIM translation stage offset (mm)	0	0.01005778216563158			
Observation start time	181590313.184000	181589256.40175			
Observation start date	2003-10-03T17:44:09	2003-10-03T17:27:36			
Observation end time	181610313.184000	181611074.04019			
Observation end date	2003-10-03T23:17:29	2003-10-03T23:31:14			
Read mode	TIMED	TIMED			

2.3 Aspect



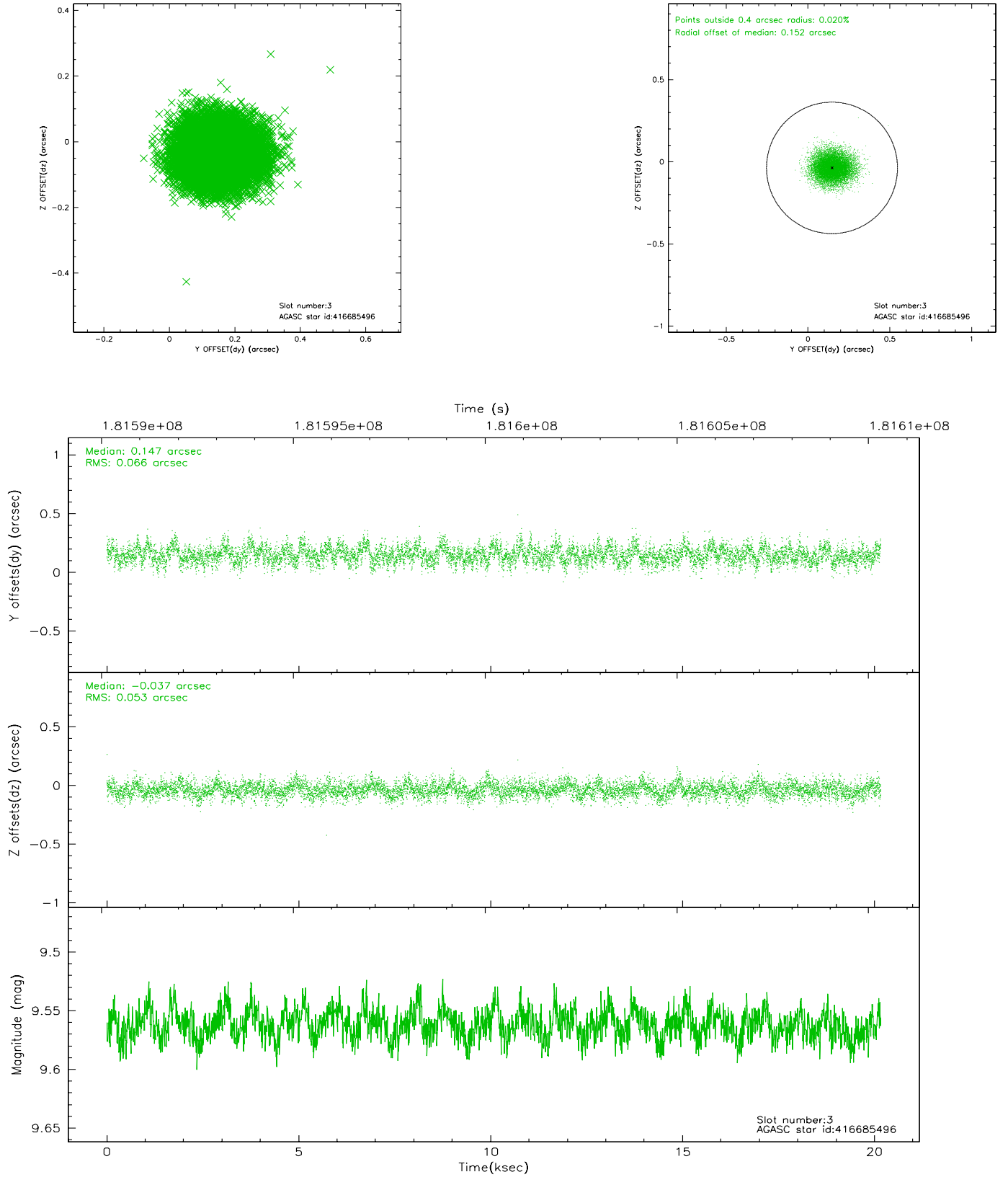


Slot Statistics

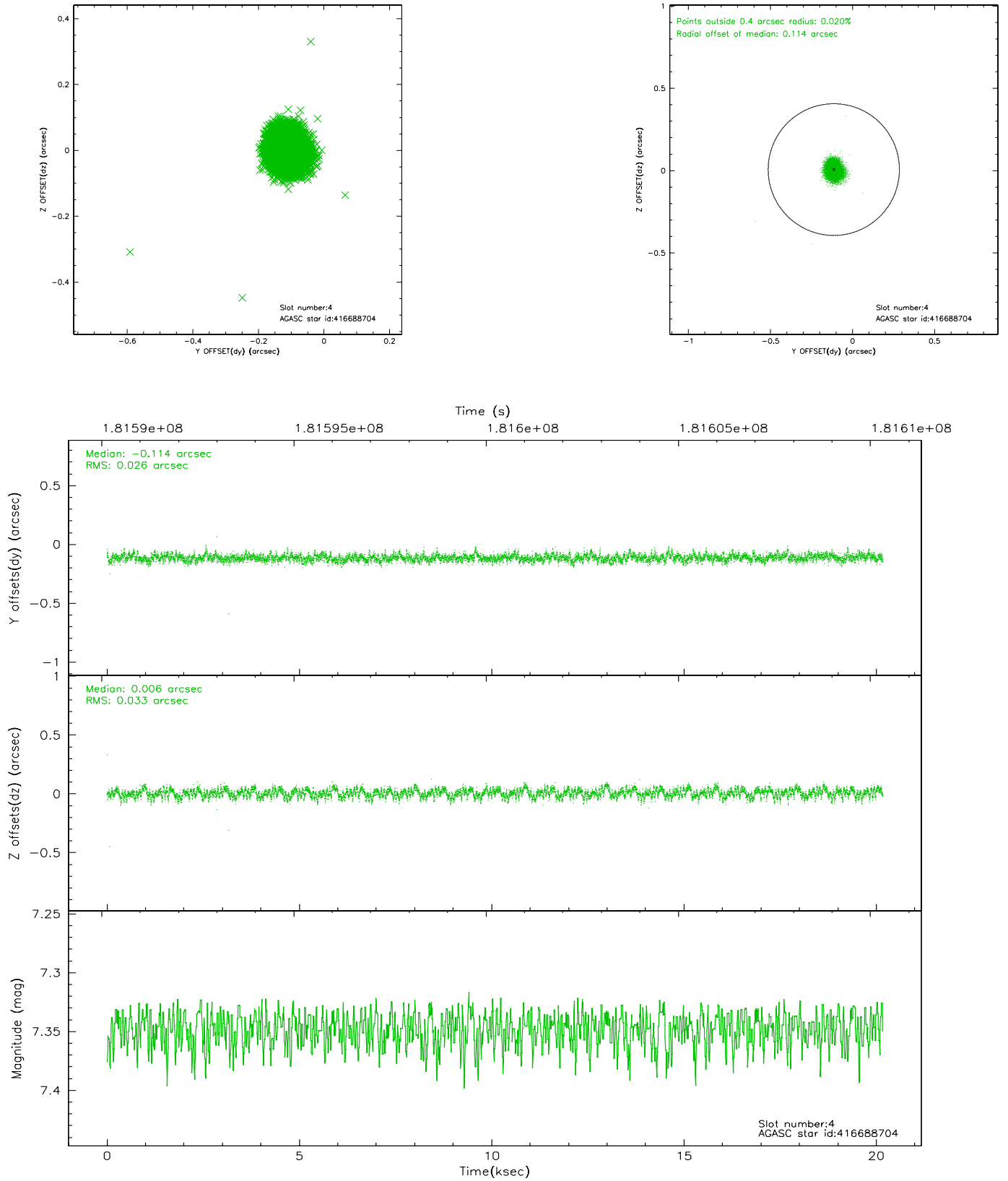
slot	status	id	mag	n_pts	med_dy	med_dz	dr1	dr2	ra	dec	mean_y	mean_z
0	FID	ACIS-S-2	7.10	4919	-0.039	-0.006	0.011	0.017	0.000000	0.000000	-759.58	-1730.93
1	FID	ACIS-S-4	7.20	4919	0.033	0.020	0.005	0.009	0.000000	0.000000	2153.65	177.43
2	FID	ACIS-S-5	7.23	4918	-0.025	-0.005	0.012	0.017	0.000000	0.000000	-1812.20	171.23
3	GUIDE	416685496	9.56	9830	0.147	-0.037	0.090	0.146	314.752202	44.299872	2005.99	950.80
4	GUIDE	416688704	7.35	9837	-0.114	0.006	0.045	0.071	314.892883	44.226388	2100.15	1389.88
5	GUIDE	416809744	8.73	9834	-0.069	0.022	0.070	0.112	315.545239	44.944493	-944.25	1851.41
6	GUIDE	416810728	9.37	9829	0.039	0.010	0.086	0.144	315.236642	44.911429	-511.04	1184.35
7	GUIDE	416678376	9.10	9827	-0.005	-0.000	0.071	0.115	313.870446	44.869391	1034.32	-1942.36

2.4 Star Slots

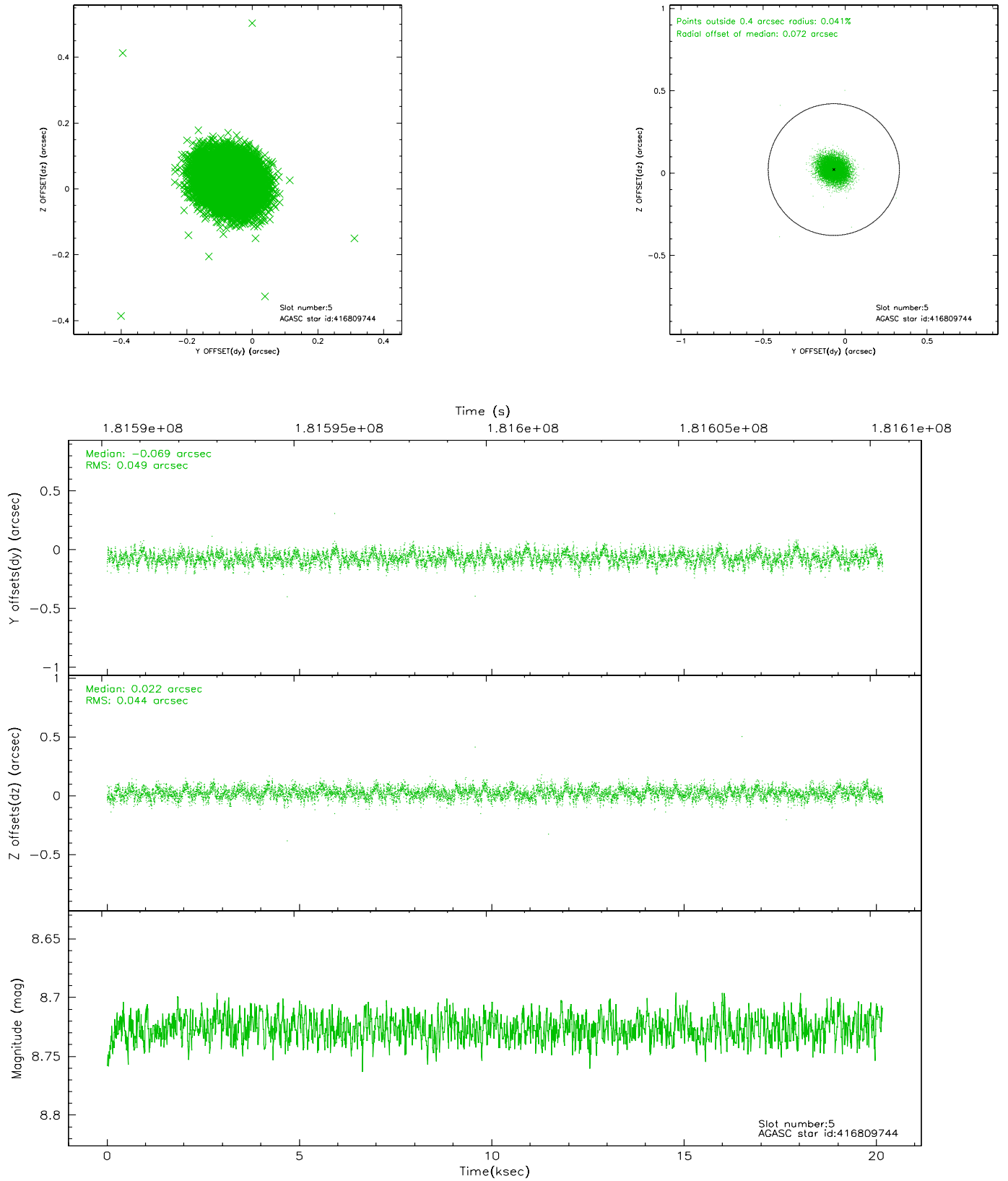
2.4.1 Slot 3



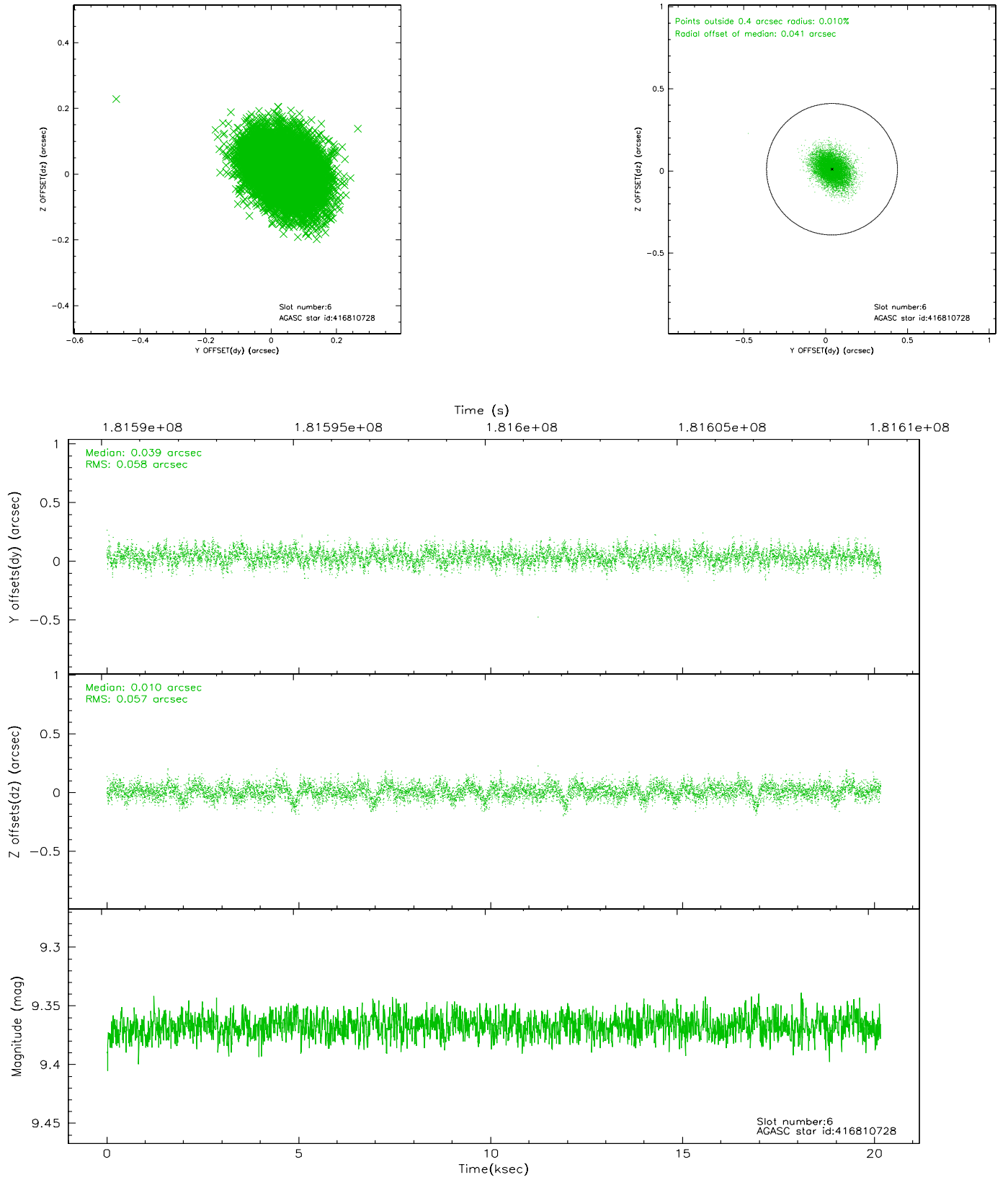
2.4.2 Slot 4



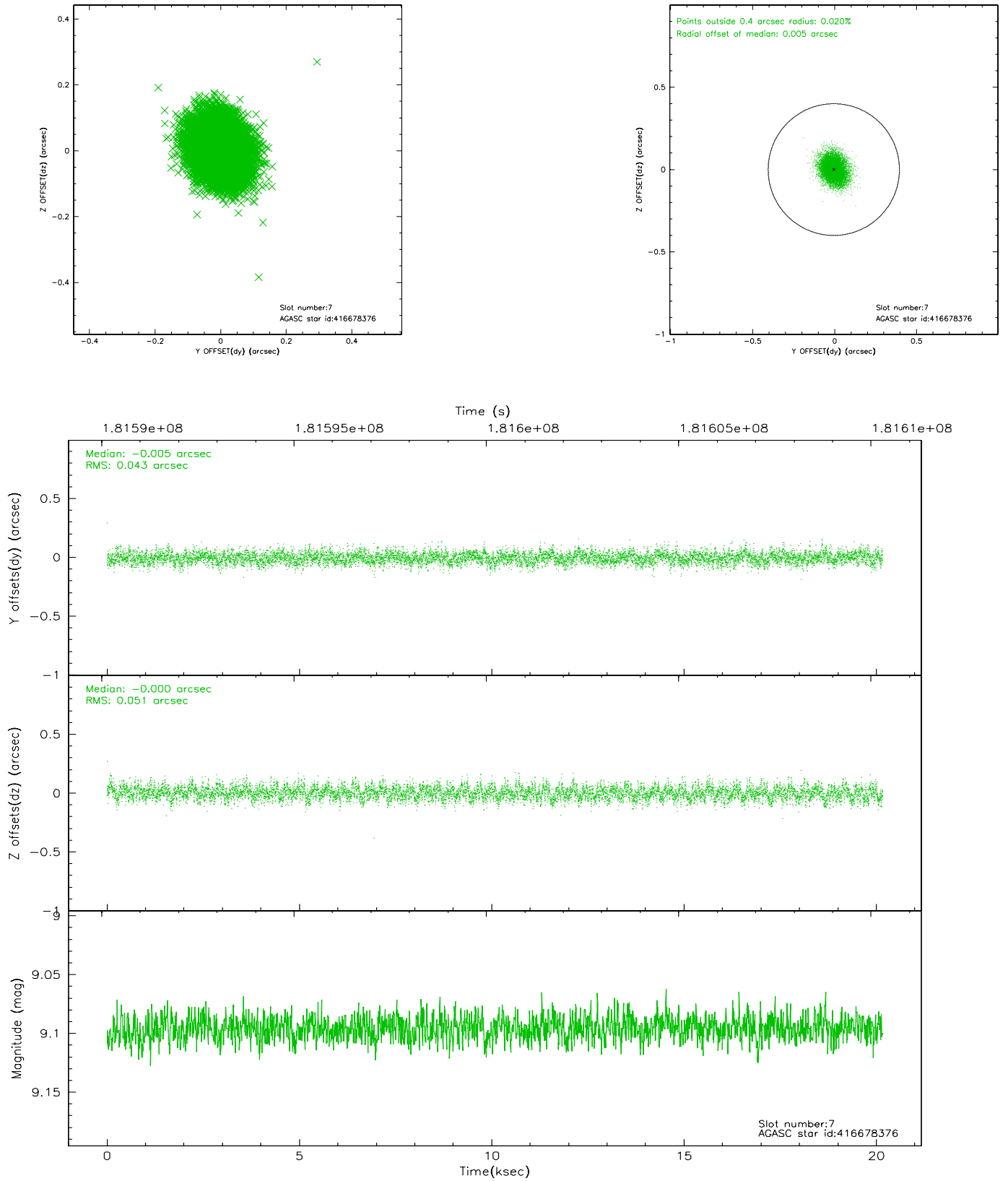
2.4.3 Slot 5



2.4.4 Slot 6

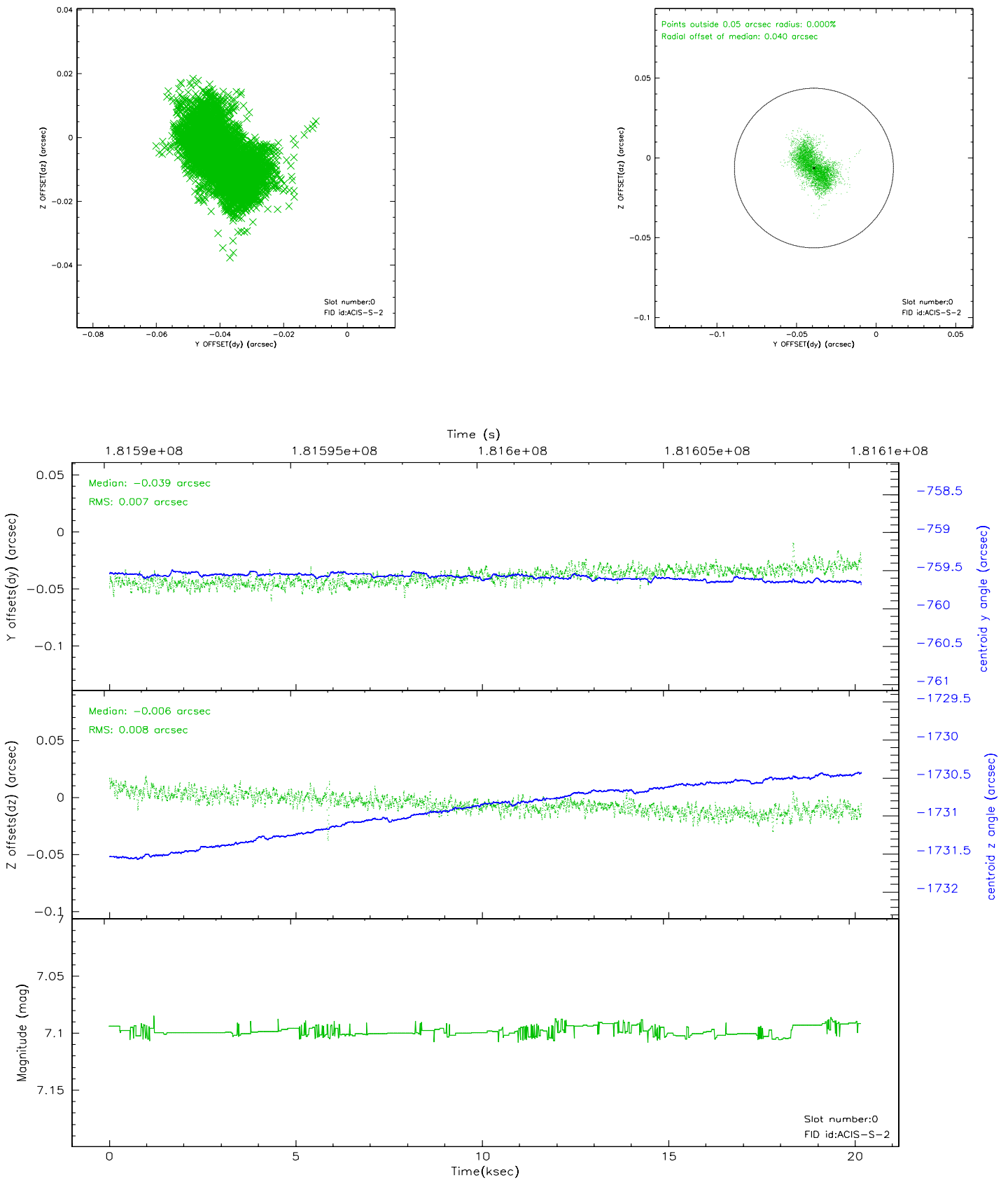


2.4.5 Slot 7

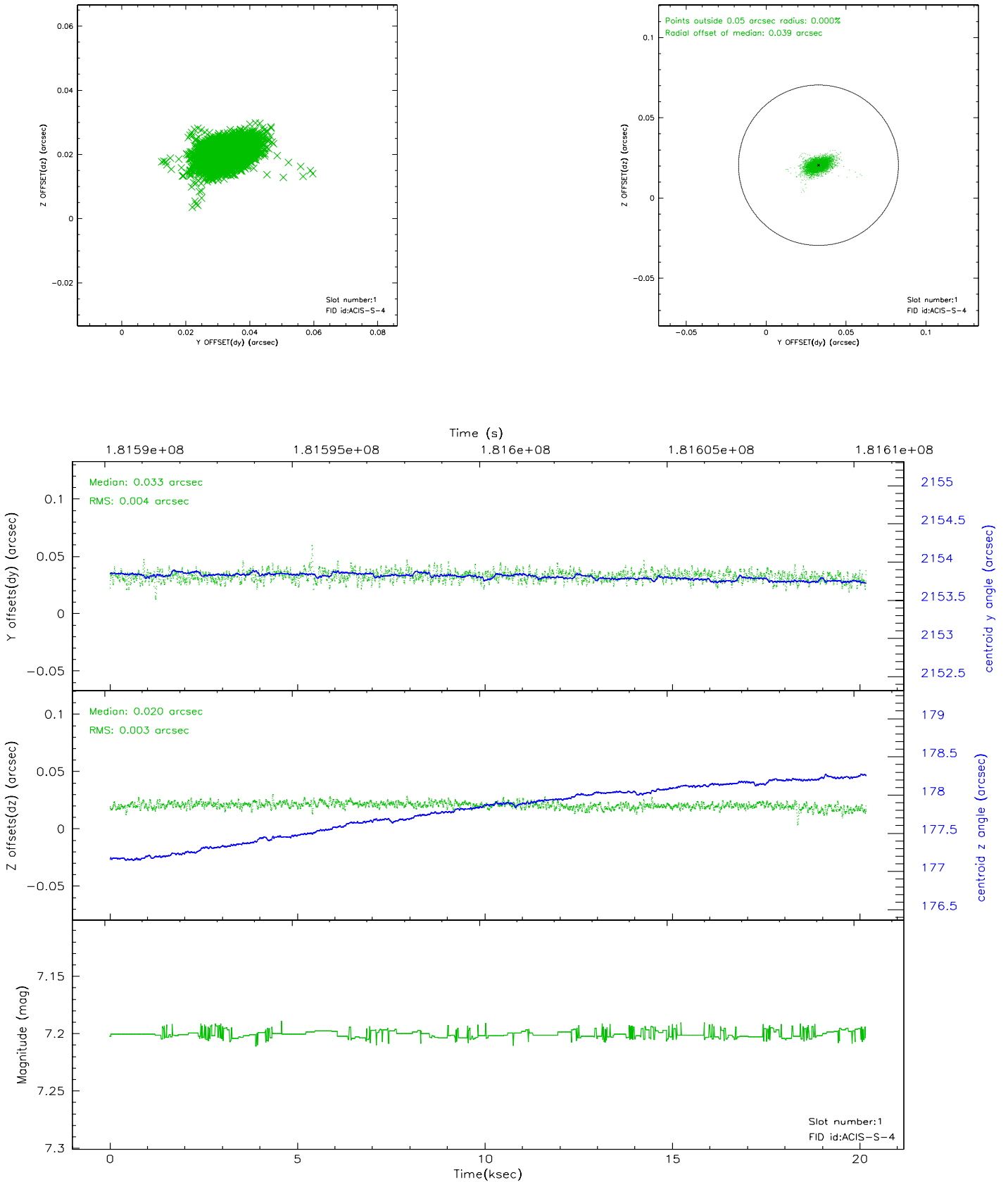


2.5 FID Slots

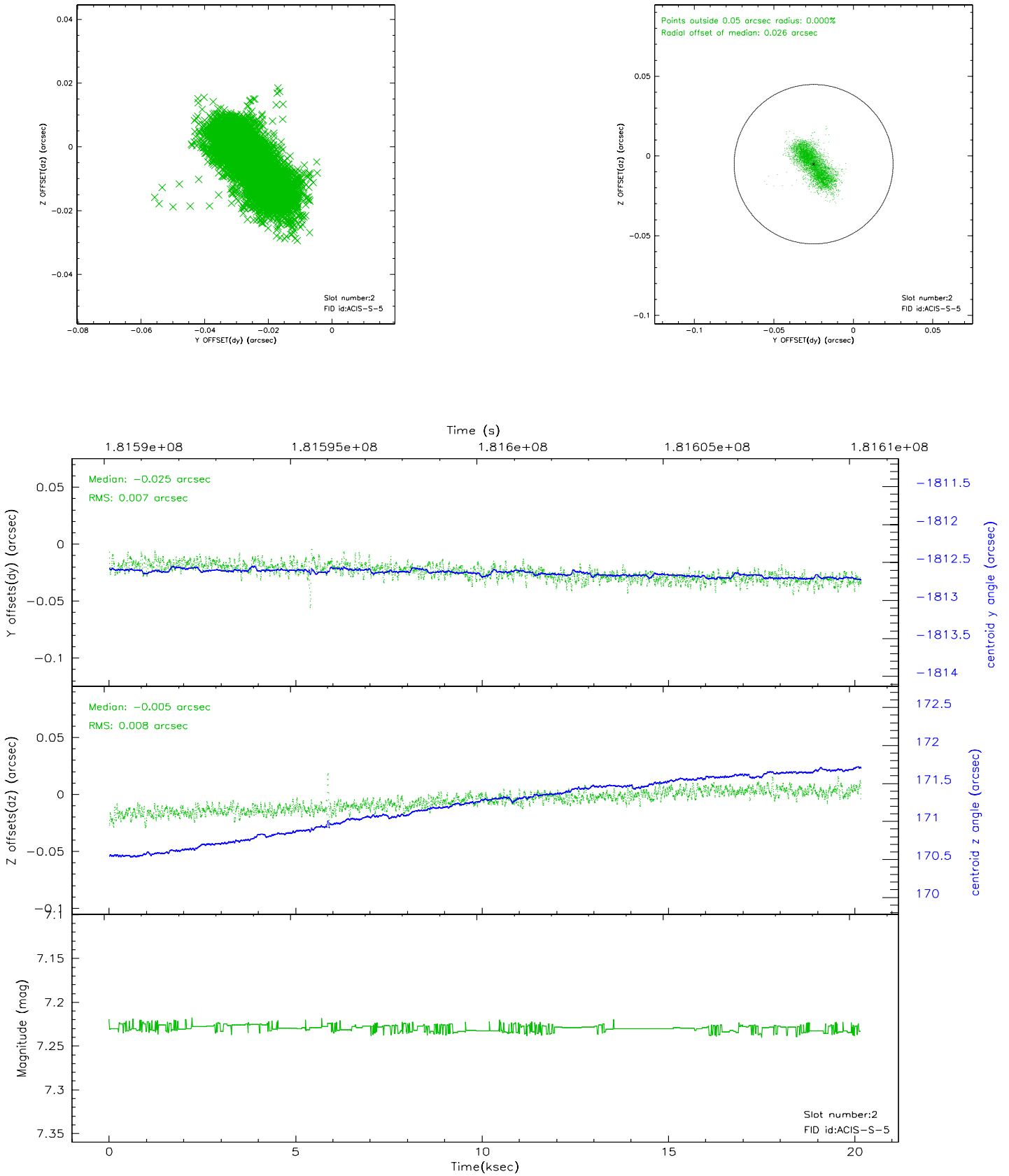
2.5.1 Slot 0



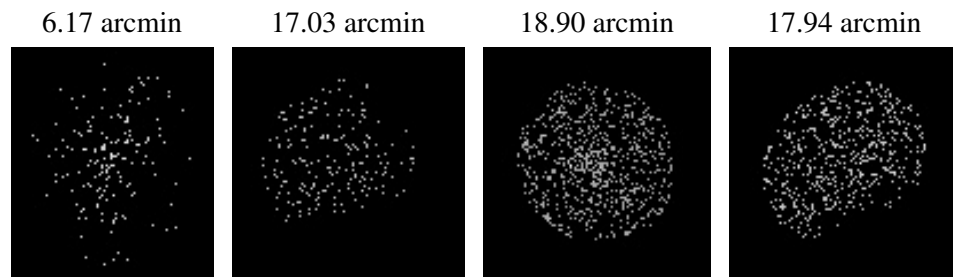
2.5.2 Slot 1



2.5.3 Slot 2



3 Point Sources



A Summary

A.1 Status

V&V Scientist	Beth Sundheim
V&V Date (YYYY-MM-DD)	2006.07.03
V&V Edition	1
V&V Disposition and Status	OK
V&V Charge Time	20.147

A.2 Comments