

V&V Reference Report

L2 ASCDS Version : 7.6.8

Observation 3877 - L2 Version 001
Chandra X-Ray Center

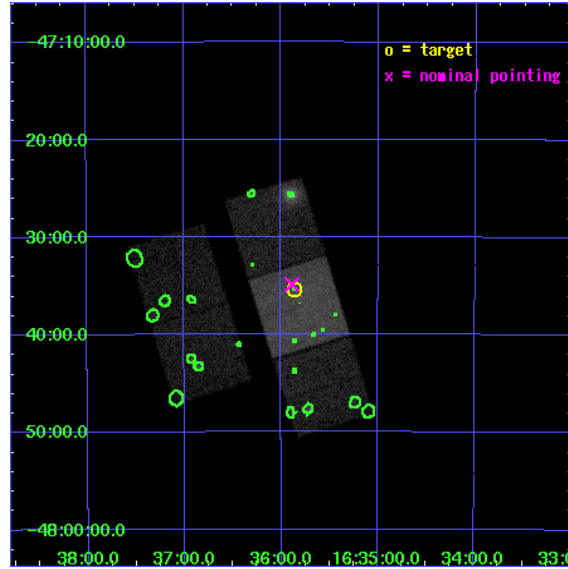
L2 Processing Date : Jul 25 2006

Contents

1	Front	2
2	OBI	3
2.1	OBI	3
2.1.1	Images	3
2.1.2	Bias	3
2.1.3	Parameters	4
2.1.4	Events	4
2.2	Compared Parameters	5
2.3	Aspect	6
2.4	Star Slots	9
2.4.1	Slot 3	9
2.4.2	Slot 4	10
2.4.3	Slot 5	11
2.4.4	Slot 6	12
2.4.5	Slot 7	13
2.5	FID Slots	14
2.5.1	Slot 0	14
2.5.2	Slot 1	15
2.5.3	Slot 2	16
3	Point Sources	17
A	Summary	18
A.1	Status	18
A.2	Comments	18

1 Front

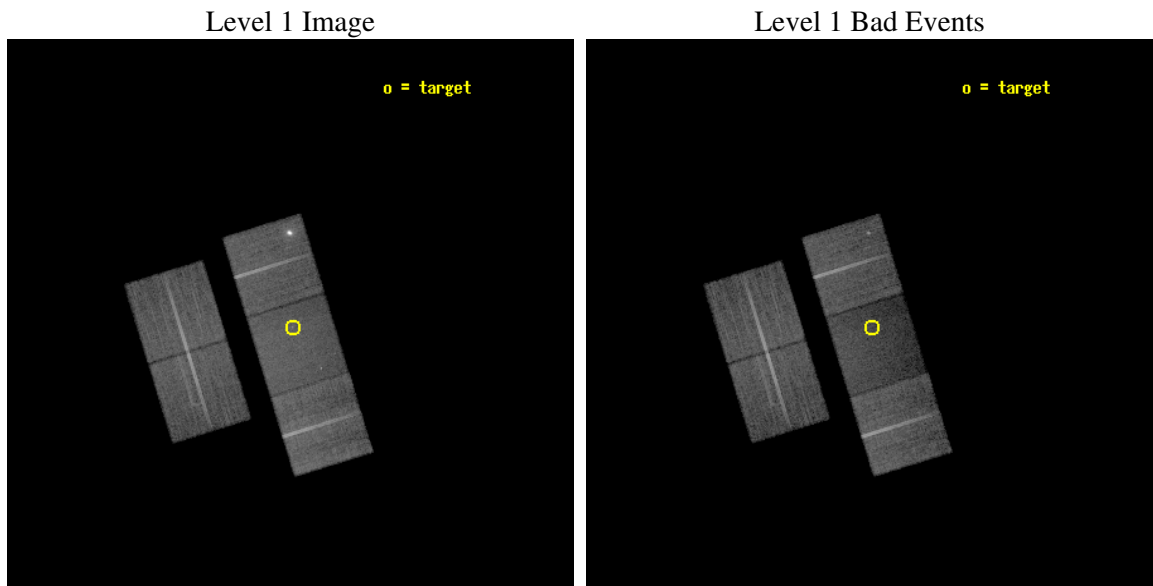
seq_num	500356
obs_id	3877
title	UNRAVELING THE COOLING TREND OF A MAGNETAR: STUDY OF SOFT GAMMA REPEATER SGR 1627-41
observer	Dr Chryssa Kouveliotou
object	SGR 1627-41
dtcycle	0
cycle	P
ra_targ	248.965833
dec_targ	-47.589806
ra_nom	248.97237522085
dec_nom	-47.581253724242
roll_nom	72.847930500066
revision	2
ontime	26005.899949998
livetime	25666.113721886
ontime2	26002.758979738
ontime3	26005.899949998
ontime6	26005.899949998
ontime7	26005.899949998
ontime8	26002.75895986
l2events	126918



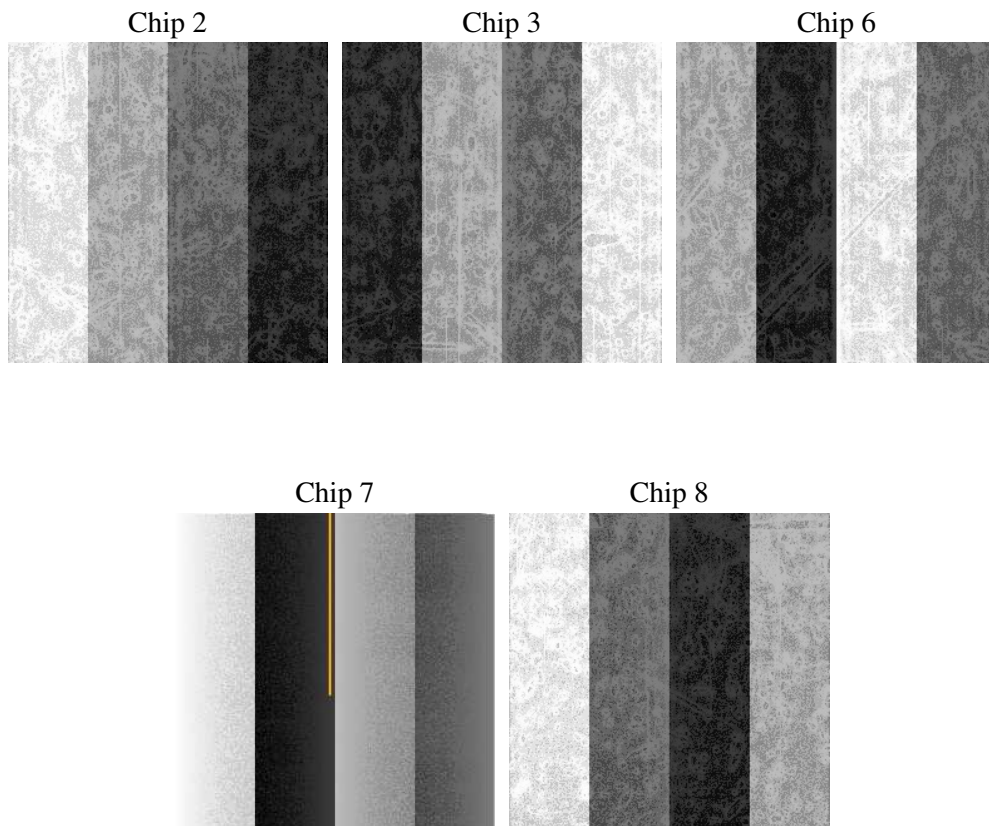
2 OBI

2.1 OBI

2.1.1 Images



2.1.2 Bias



2.1.3 Parameters

obi_num	0
ascdsver	7.6.8
caldbver	3.2.2
date	2006-07-25T19:27:44
revision	2

sched_exp_time	25900.000000
ontime	26010.65217635
ontime2	26007.51120609
ontime3	26010.65217635
ontime6	26010.65217635
ontime7	26010.65217635
ontime8	26007.511186212
l1events	718930

2.1.4 Events

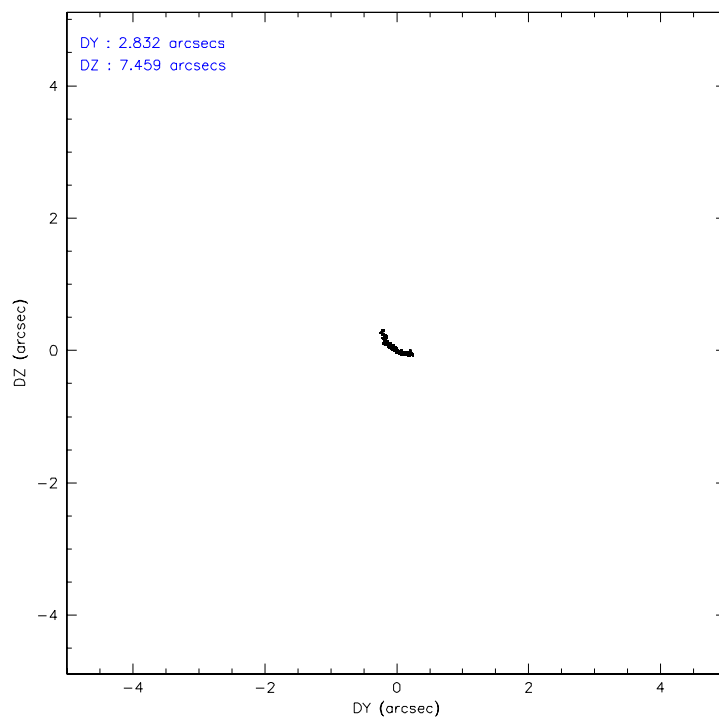
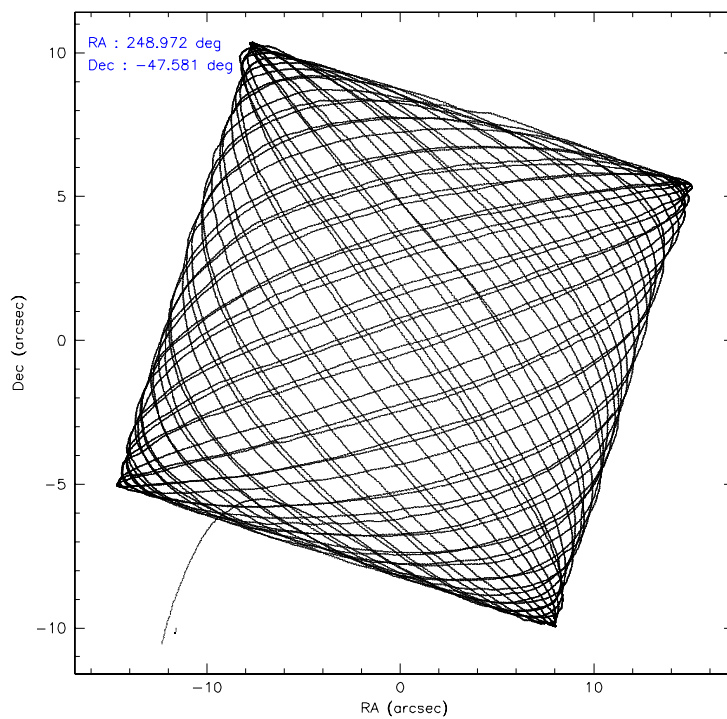
	ccd 2	ccd 3	ccd 6	ccd 7	ccd 8
level 1 events	137917	131012	156490	129380	164131
rejected events	124735	117744	122703	70077	131834
rejected %	90%	89%	78%	54%	80%

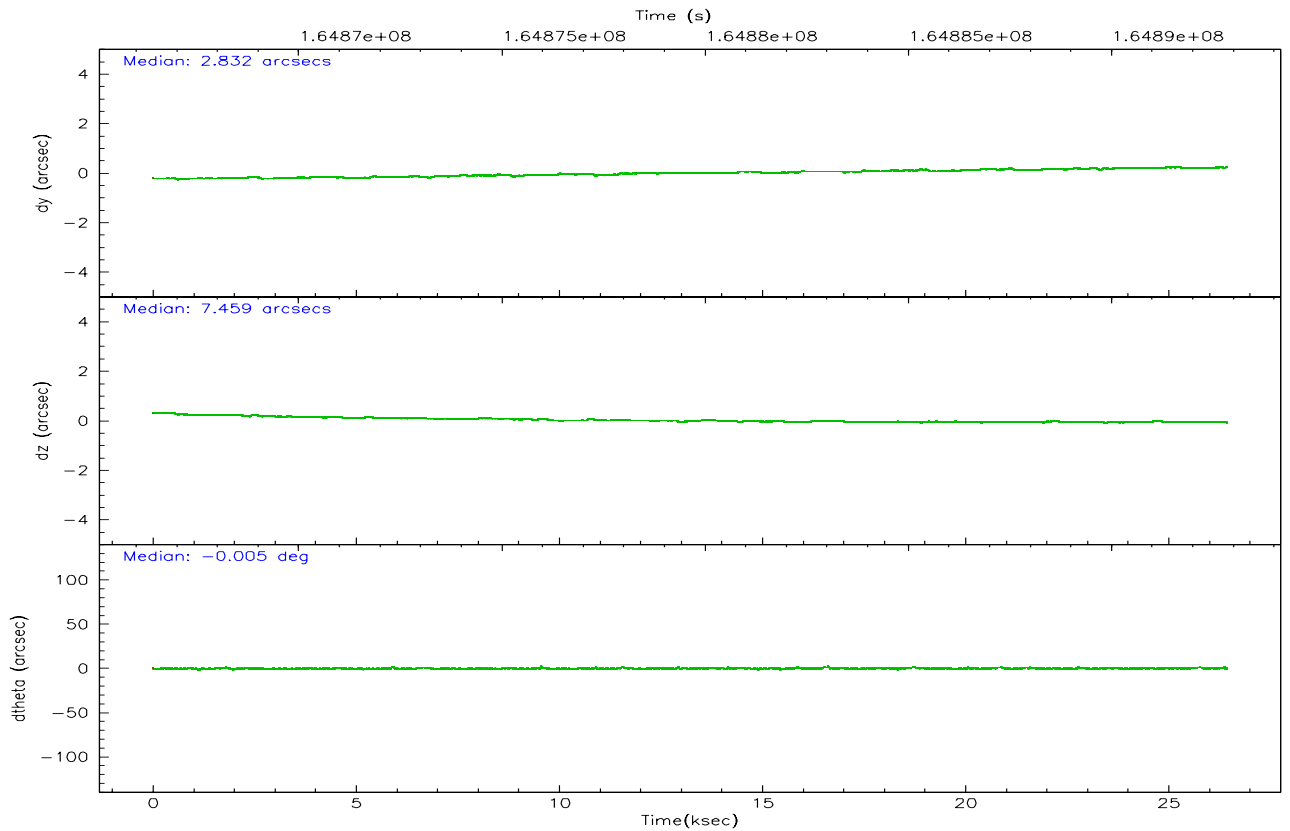
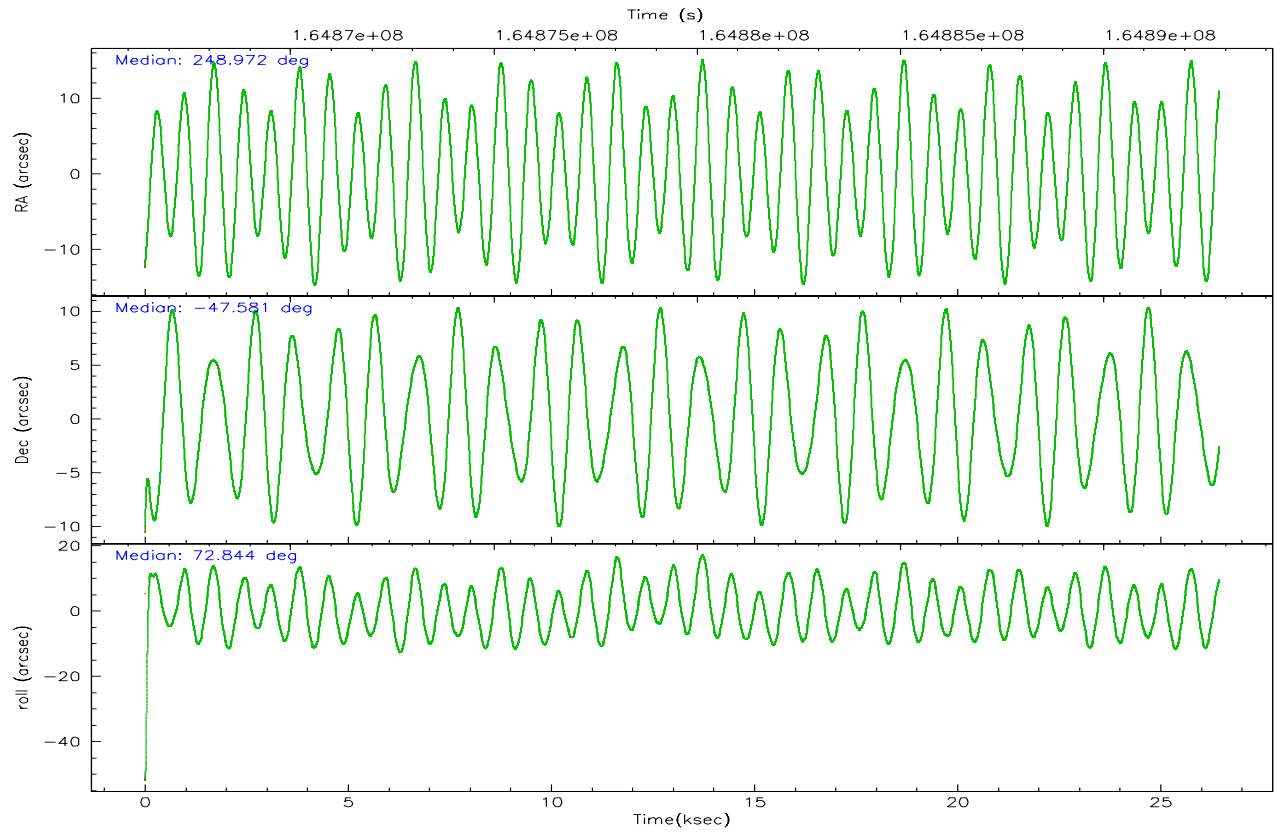
	ccd 2	ccd 3	ccd 6	ccd 7	ccd 8
grade 0 events	5005	5409	15362	4100	8134
	3%	4%	9%	3%	4%
grade 1 events	58	87	139	67	88
	0%	0%	0%	0%	0%
grade 2 events	2968	2621	6389	14310	7363
	2%	2%	4%	11%	4%
grade 3 events	1509	1514	2745	3252	3583
	1%	1%	1%	2%	2%
grade 4 events	1437	1413	2719	3299	3345
	1%	1%	1%	2%	2%
grade 5 events	3660	4468	4808	9983	6627
	2%	3%	3%	7%	4%
grade 6 events	2265	2313	6575	34350	9874
	1%	1%	4%	26%	6%
grade 7 events	121015	113187	117753	60019	125117
	87%	86%	75%	46%	76%

2.2 Compared Parameters

Parameter	Planned	Actual	Parameter	Planned	Actual
Instrument	ACIS	ACIS	Obspar format version number	6	6
Detector	ACIS-23678	ACIS-23678	Obspar file type	PREDICTED	ACTUAL
Grating	NONE	NONE	Obspar update status	NONE	UPDATED
Data mode	VFAINT	VFAINT	On-chip summing requested	N	N
Observation mode	POINTING	POINTING	Subarray requested	NONE	NONE
Pointing RA	248.981902	248.9723752208511	Alternating exposures requested	N	N
Pointing Dec	-47.607673	-47.5812537242422	Primary exposure time	0.000000	3.1
Pointing Roll	72.698364	72.8479305000663			
SIM focus pos (mm)	-0.684267	-0.6828225247311905			
SIM defocus (mm)	0	0.001444936568705701			
SIM translation stage pos (mm)	-190.132523	-190.1425803651734			
SIM translation stage offset (mm)	0	0.01005778216563158			
Observation start time	164866952.184000	164865807.71532			
Observation start date	2003-03-24T04:21:28	2003-03-24T04:03:27			
Observation end time	164892852.184000	164893870.1665			
Observation end date	2003-03-24T11:33:08	2003-03-24T11:51:10			
Read mode	TIMED	TIMED			

2.3 Aspect



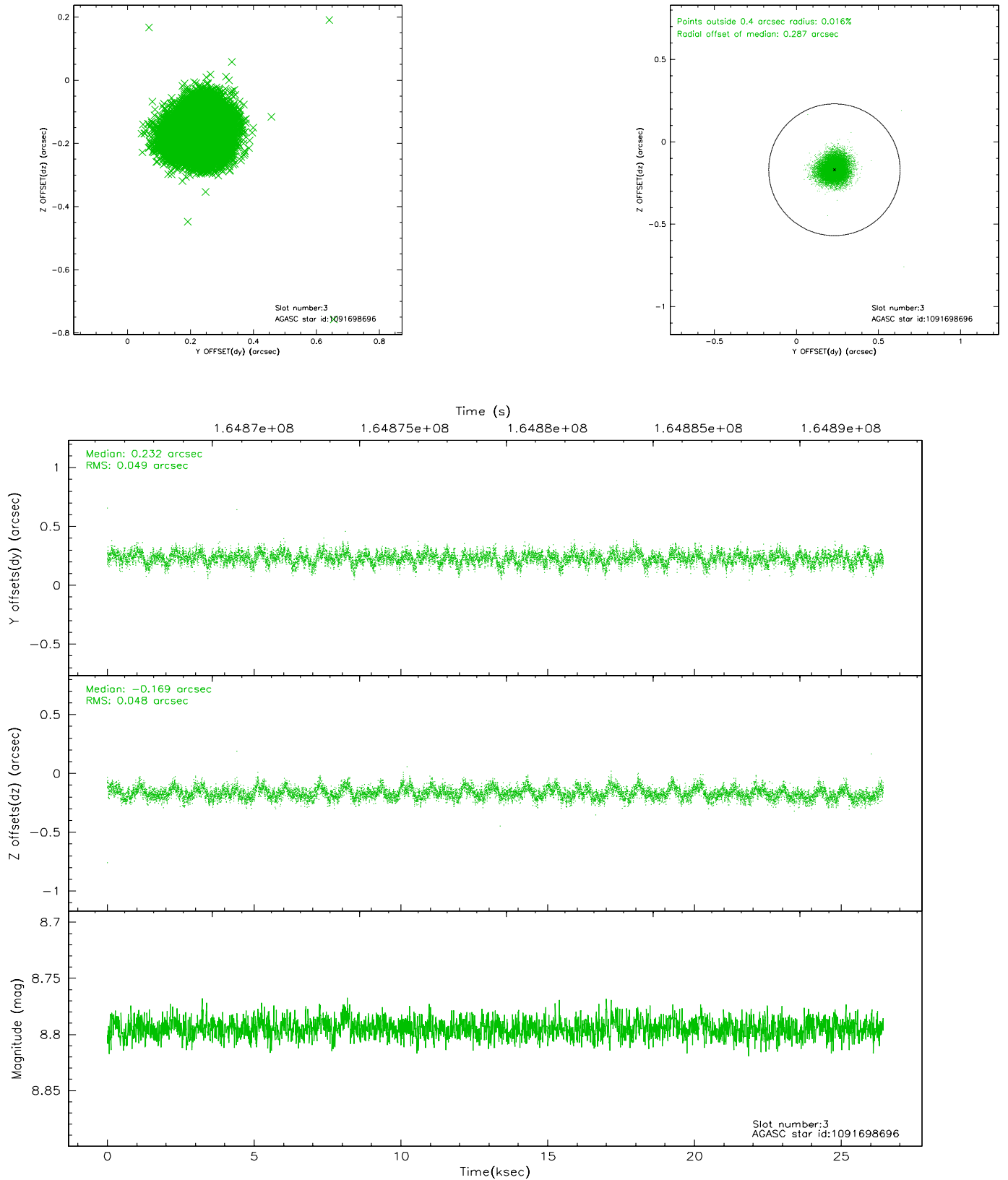


Slot Statistics

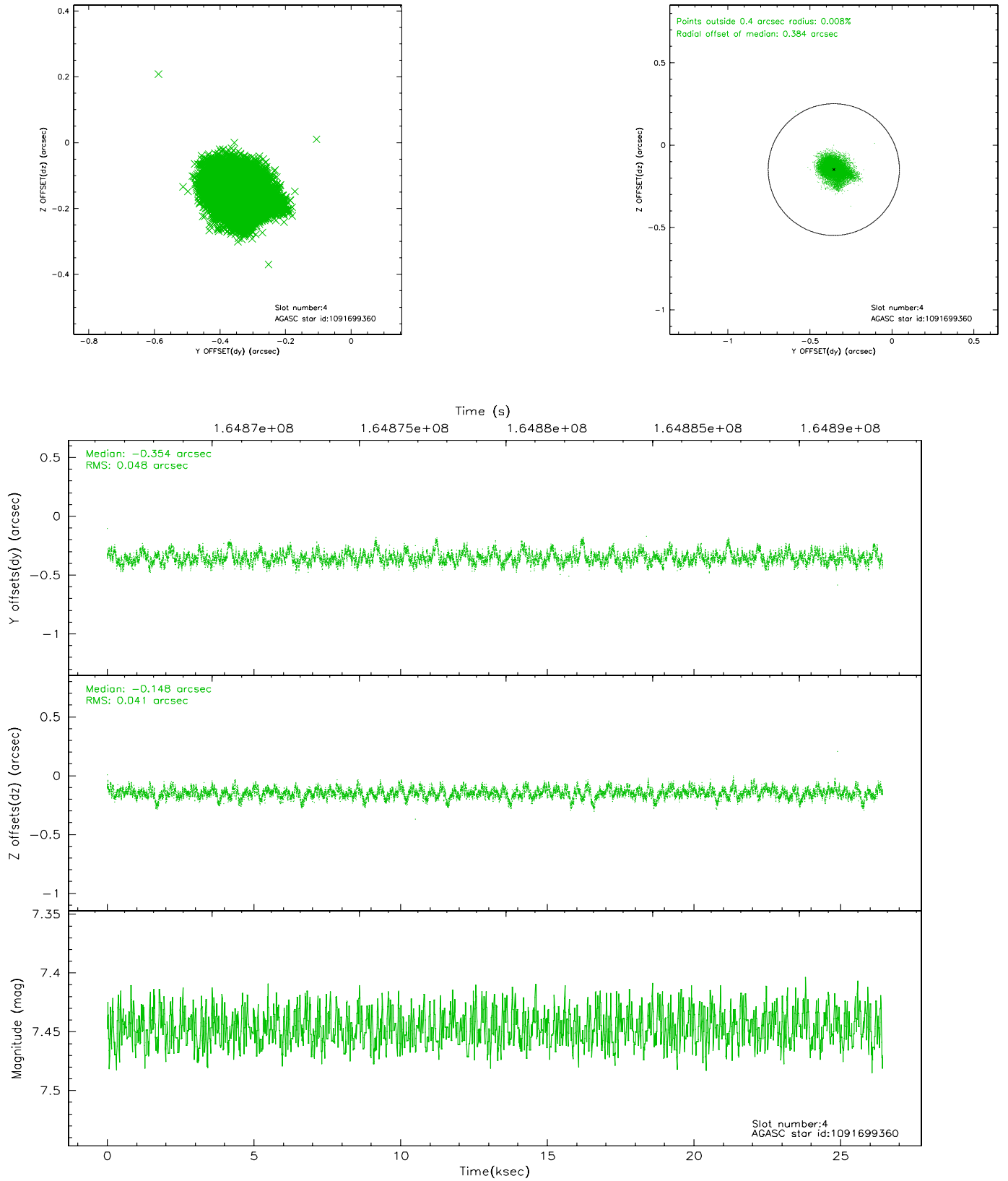
slot	status	id	mag	n_pts	med_dy	med_dz	dr1	dr2	ra	dec	mean_y	mean_z
0	FID	ACIS-S-1	7.19	6450	0.046	-0.019	0.008	0.014	0.000000	0.000000	940.58	-1724.29
1	FID	ACIS-S-2	7.12	6450	-0.035	0.042	0.007	0.012	0.000000	0.000000	-755.34	-1728.86
2	FID	ACIS-S-6	7.36	6450	-0.031	-0.017	0.010	0.019	0.000000	0.000000	406.16	816.95
3	GUIDE	1091698696	8.79	12892	0.232	-0.169	0.073	0.117	248.529134	-48.079711	-1948.97	533.14
4	GUIDE	1091699360	7.45	12897	-0.354	-0.148	0.067	0.112	248.660725	-47.004364	1837.29	1398.35
5	GUIDE	1091703168	8.94	12890	-0.283	-0.103	0.069	0.111	249.174634	-47.078871	1957.64	115.04
6	GUIDE	1091720560	9.61	12890	0.279	0.084	0.110	0.185	248.877400	-48.256432	-2303.83	-455.52
7	GUIDE	1091698824	9.67	12849	0.124	0.343	0.140	0.224	249.742448	-48.178680	-1427.96	-2356.88

2.4 Star Slots

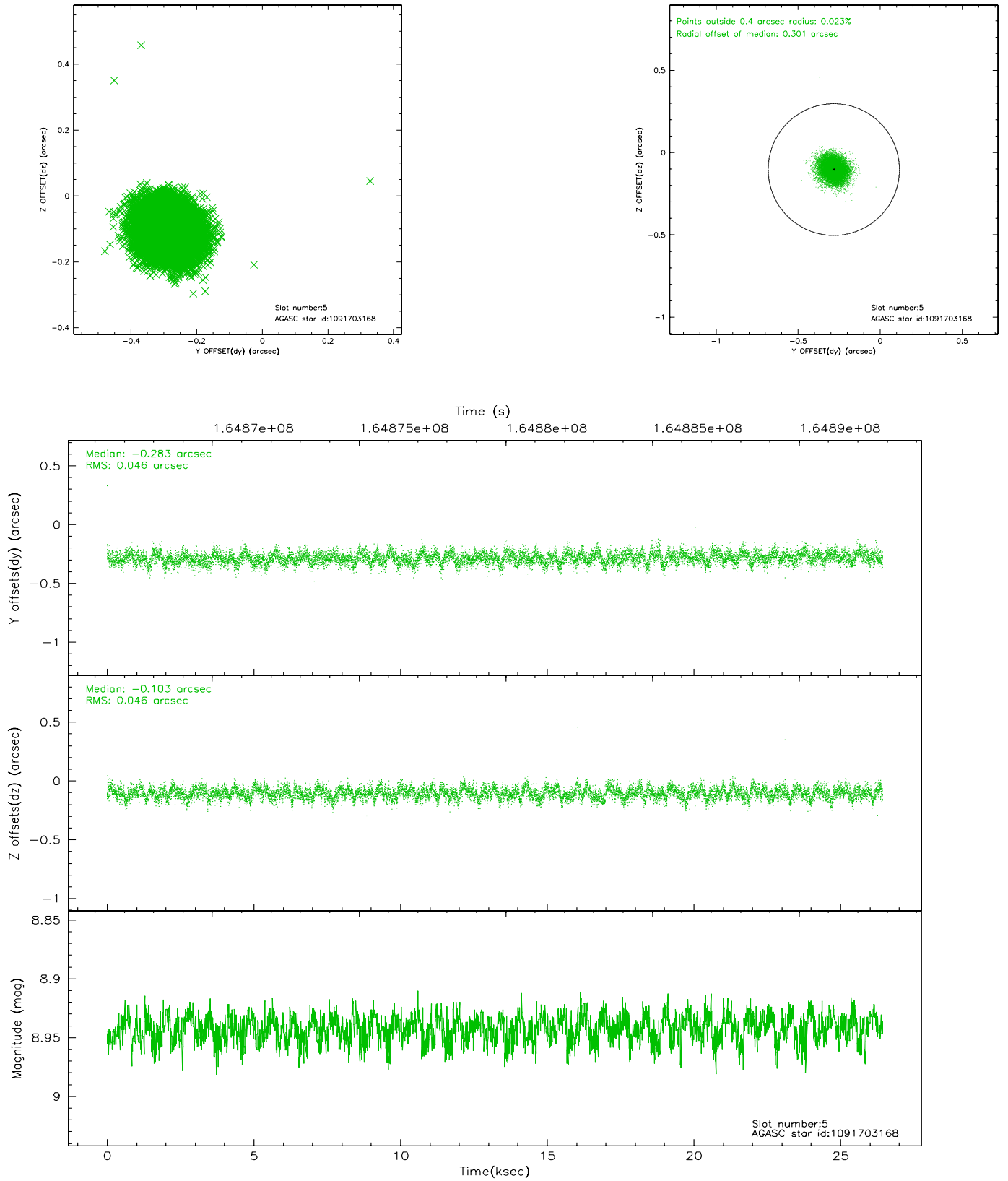
2.4.1 Slot 3



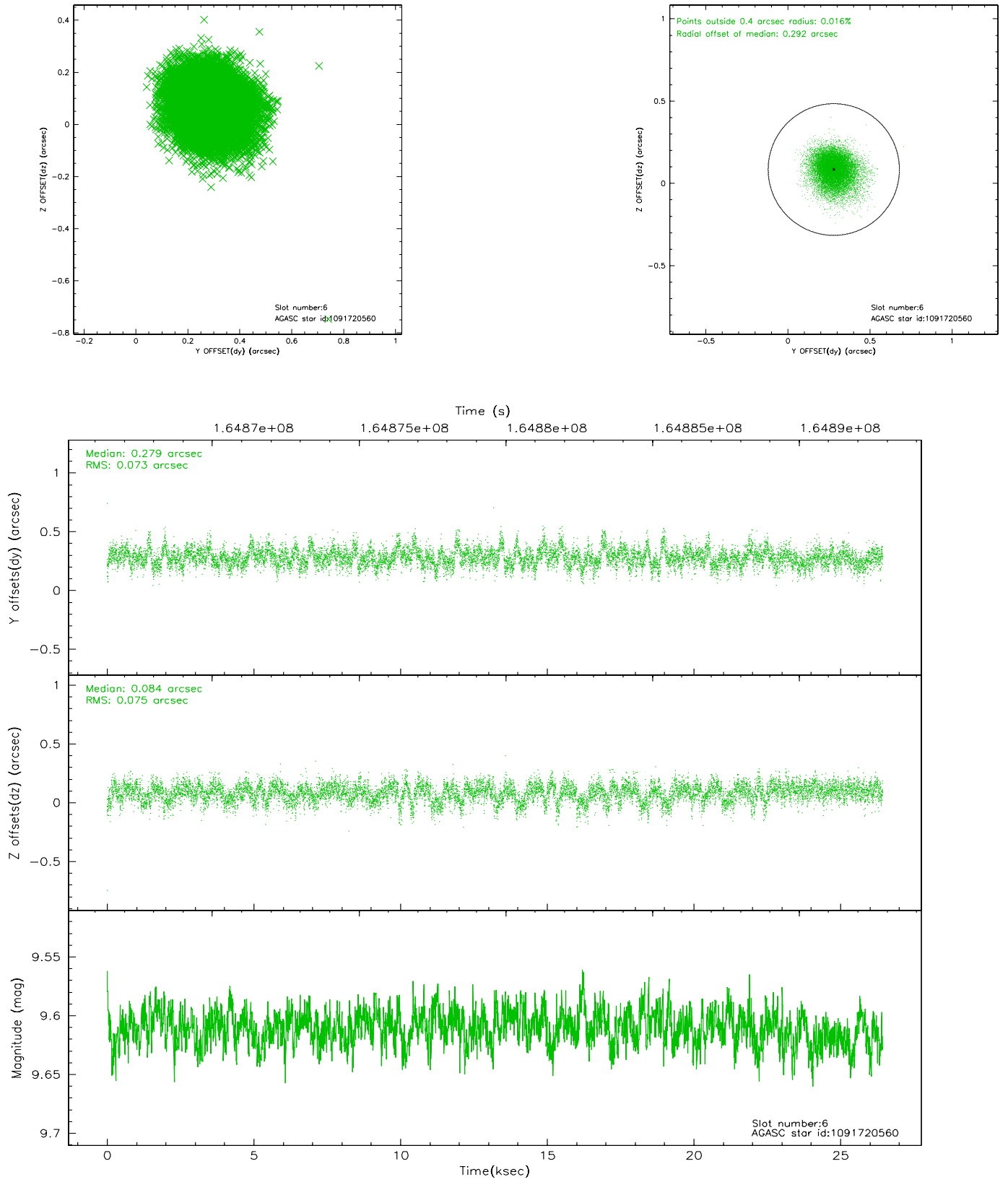
2.4.2 Slot 4



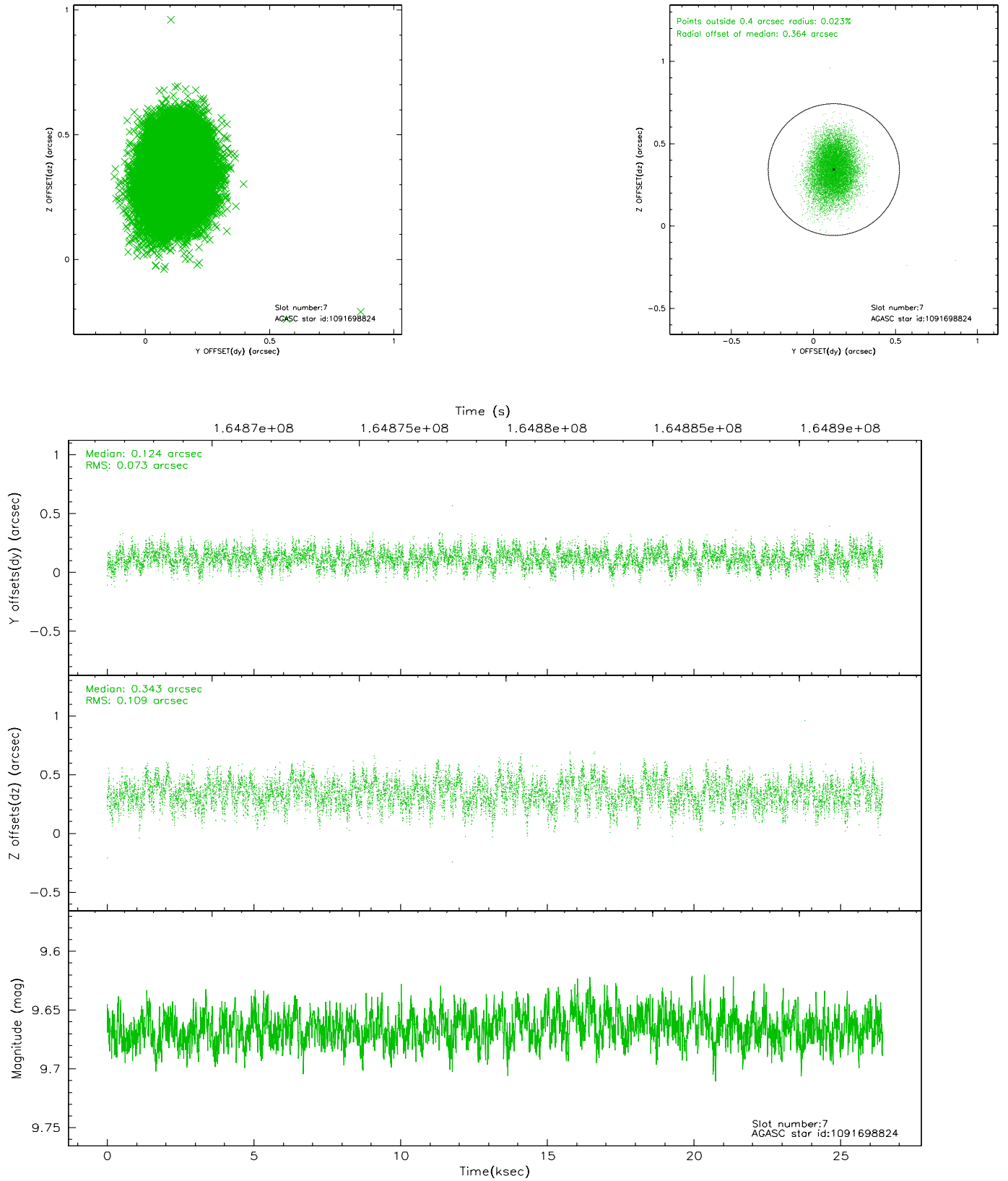
2.4.3 Slot 5



2.4.4 Slot 6

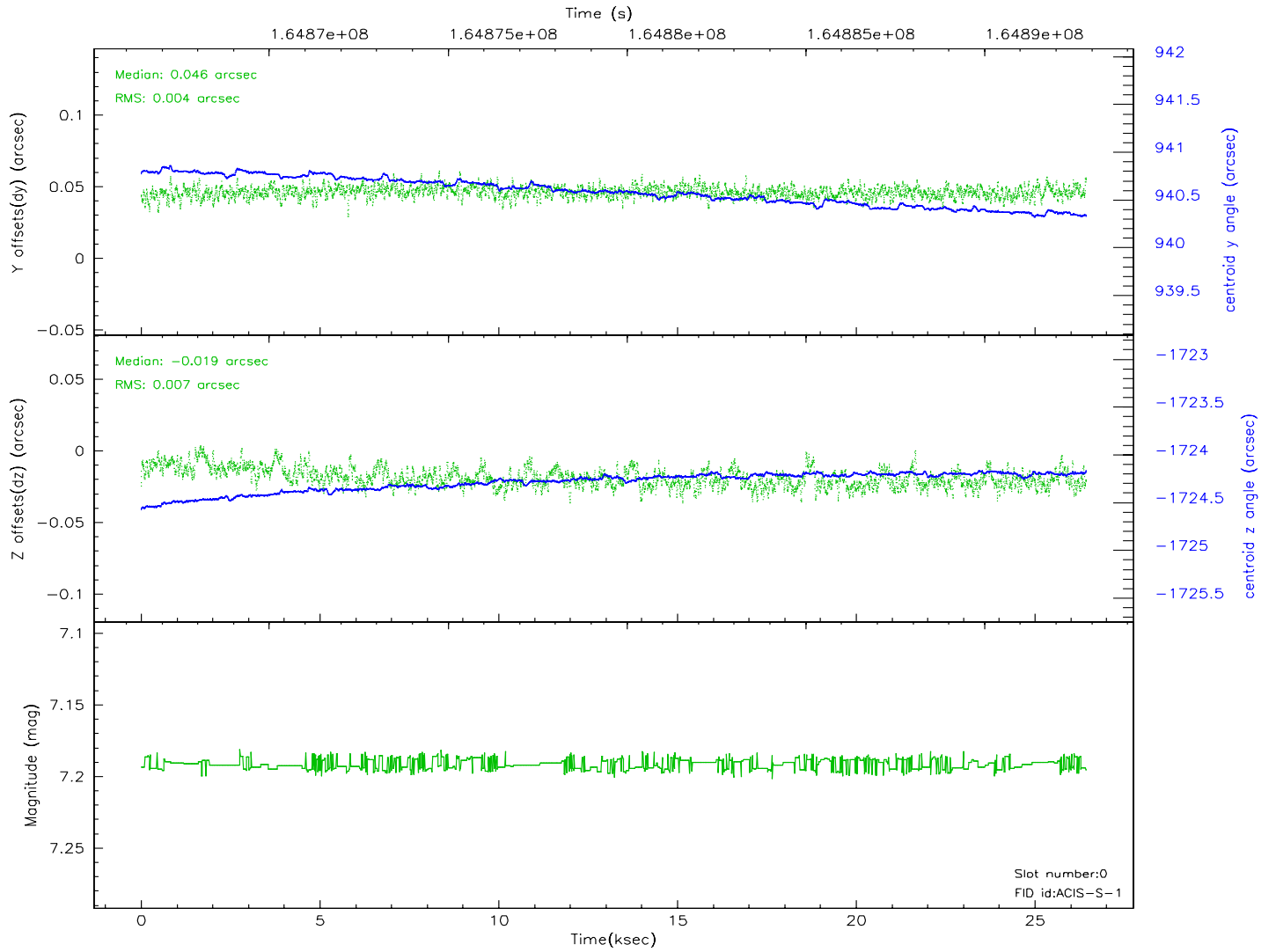
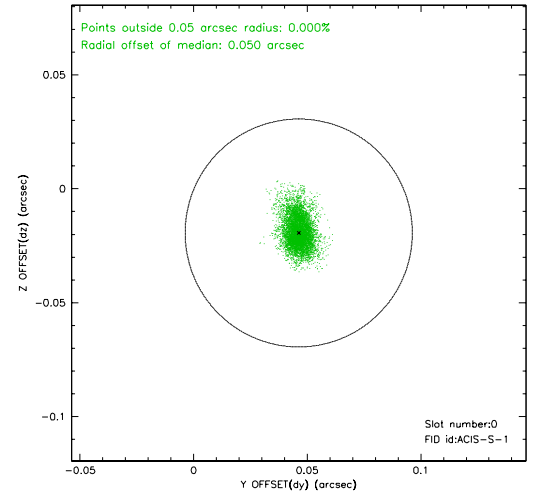
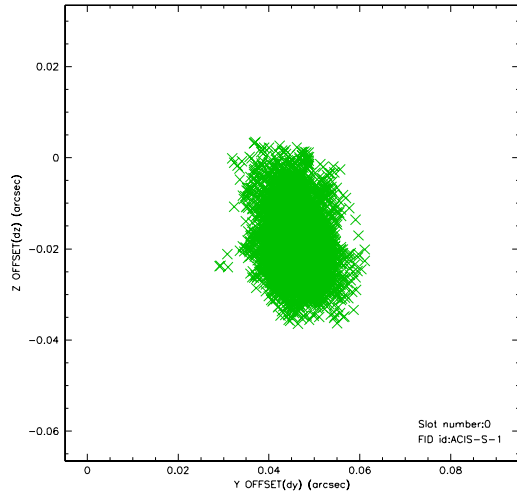


2.4.5 Slot 7

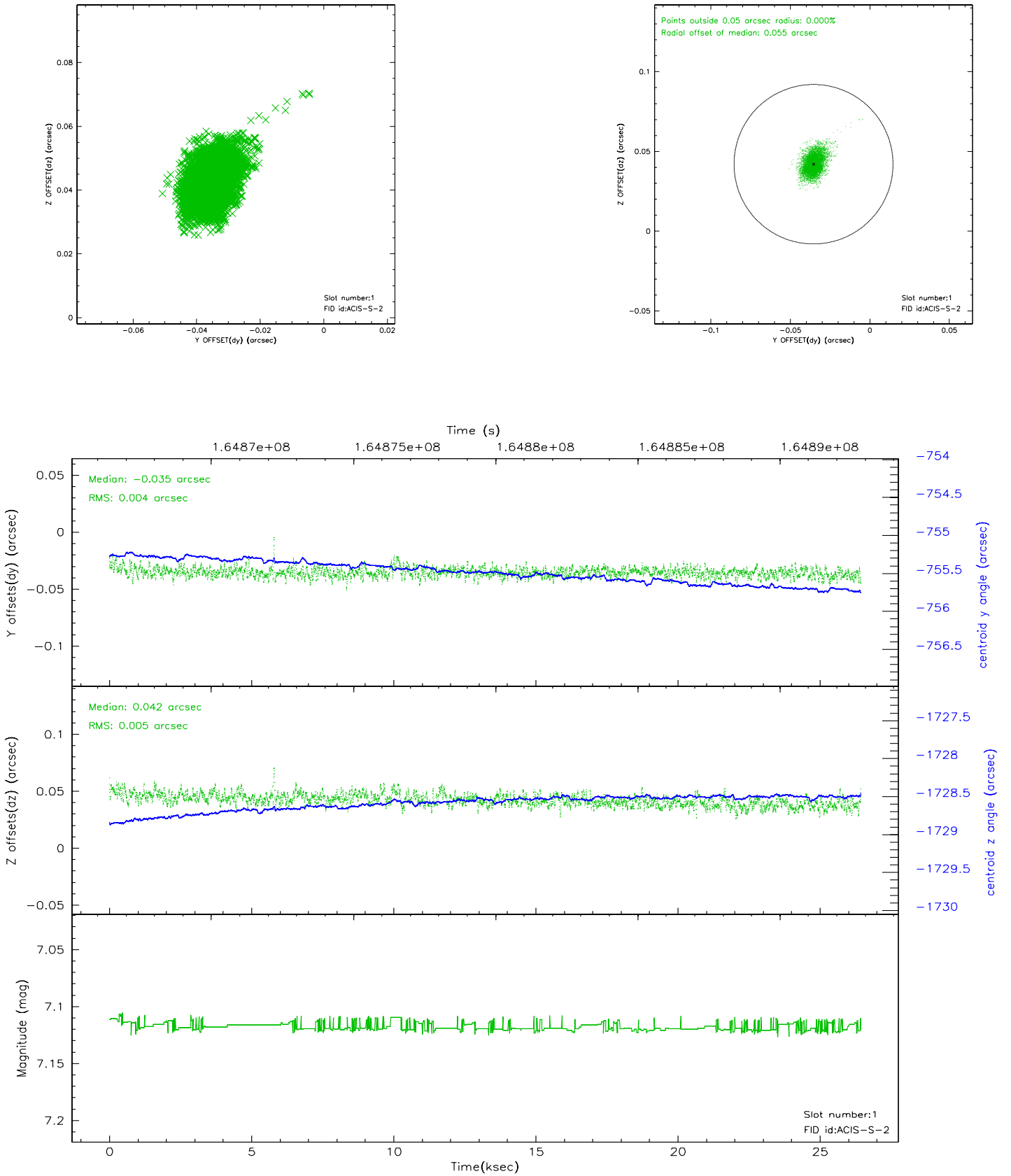


2.5 FID Slots

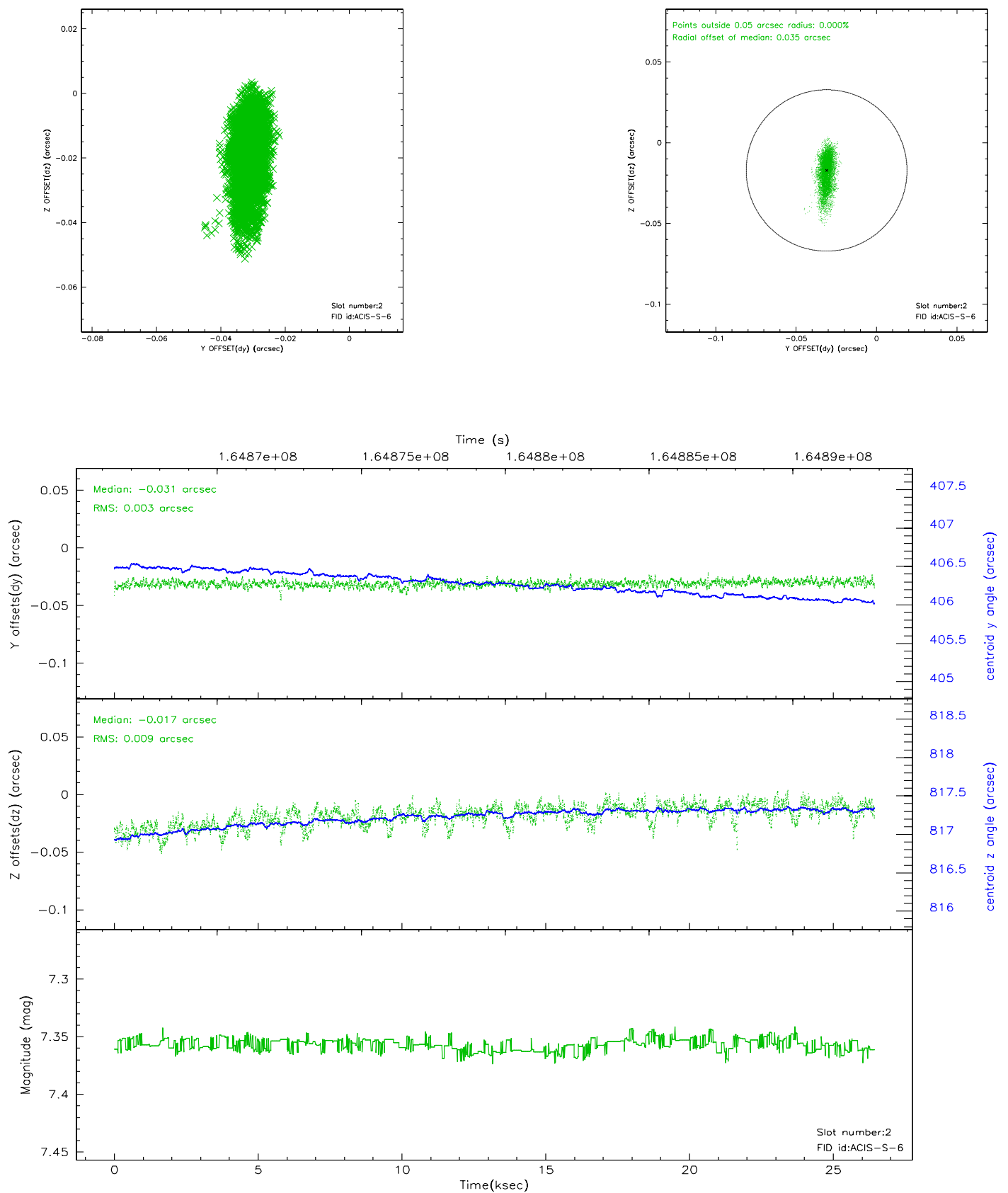
2.5.1 Slot 0



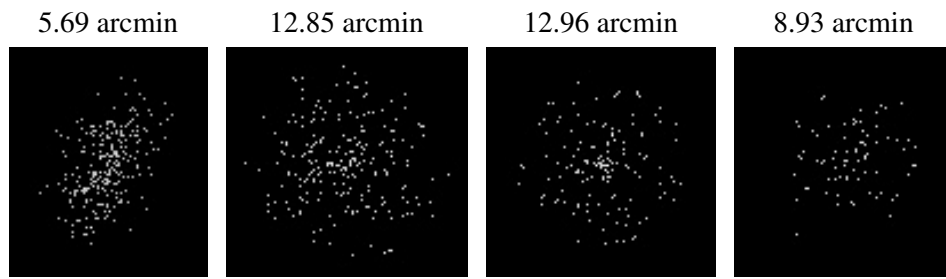
2.5.2 Slot 1



2.5.3 Slot 2



3 Point Sources



A Summary

A.1 Status

V&V Scientist	Beth Sundheim
V&V Date (YYYY-MM-DD)	2006.07.26
V&V Edition	1
V&V Disposition and Status	OK
V&V Charge Time	26

A.2 Comments