

V&V Reference Report

L2 ASCDS Version : 7.6.8.1

Observation 3876 - L2 Version 001
Chandra X-Ray Center

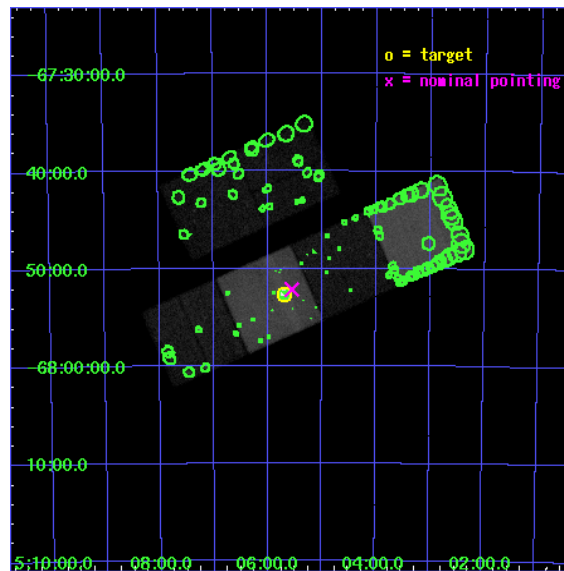
L2 Processing Date : Aug 10 2006

Contents

1	Front	2
2	OBI	3
2.1	OBI	3
2.1.1	Images	3
2.1.2	Bias	3
2.1.3	Parameters	4
2.1.4	Events	4
2.2	Compared Parameters	5
2.3	Aspect	6
2.4	Star Slots	9
2.4.1	Slot 3	9
2.4.2	Slot 4	10
2.4.3	Slot 5	11
2.4.4	Slot 6	12
2.4.5	Slot 7	13
2.5	FID Slots	14
2.5.1	Slot 0	14
2.5.2	Slot 1	15
2.5.3	Slot 2	16
3	Point Sources	17
A	Summary	18
A.1	Status	18
A.2	Comments	18

1 Front

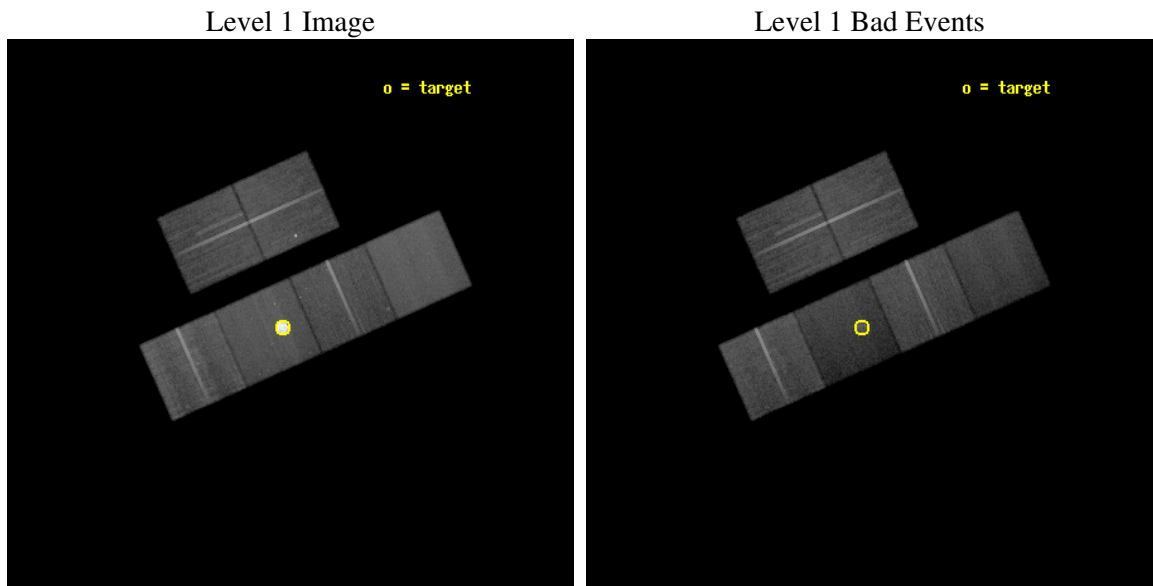
seq_num	500355
obs_id	3876
title	DEM L71: SHOCK PHYSICS AT HIGH RESOLUTION
observer	Dr. Cara Rakowski
object	DEM L71
dtcycle	0
cycle	P
ra_targ	76.42375
dec_targ	-67.877222
ra_nom	76.387632066181
dec_nom	-67.869288176964
roll_nom	155.95316665876
revision	2
ontime	49612.594943821
livetime	48984.370393525
ontime2	49609.353963733
ontime3	49602.872033149
ontime5	49619.076944262
ontime6	49615.835914075
ontime7	49612.594943821
ontime8	49619.077023864
l2events	628389



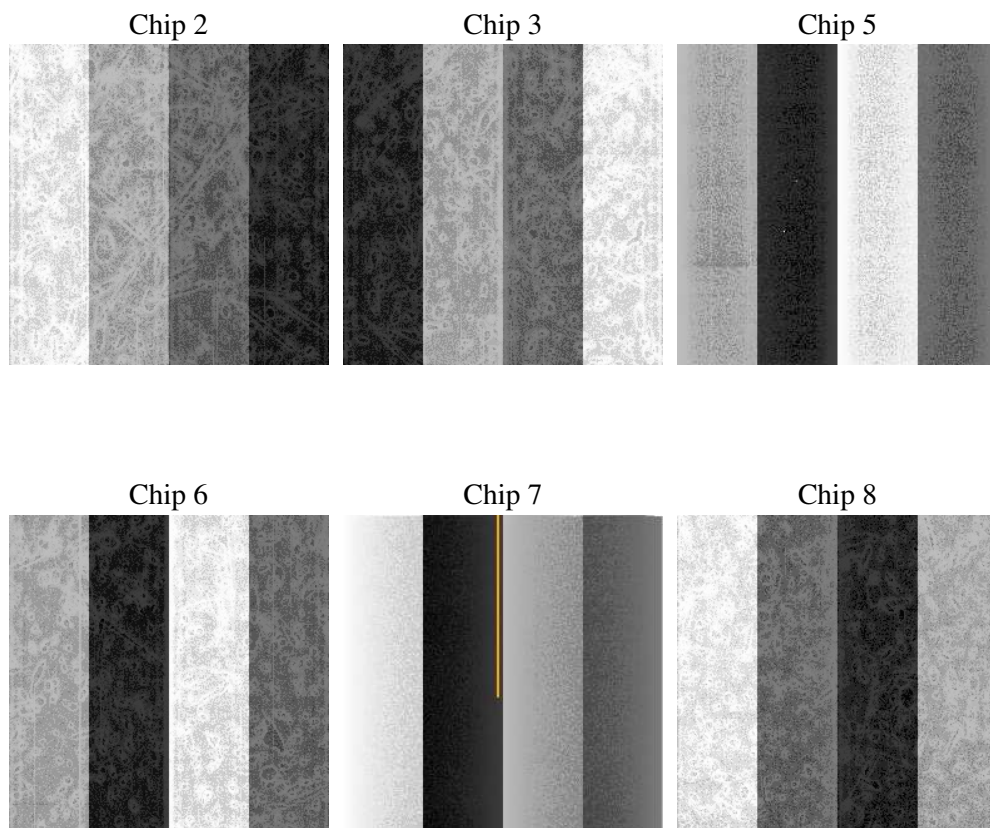
2 OBI

2.1 OBI

2.1.1 Images



2.1.2 Bias



2.1.3 Parameters

obi_num	1
ascdsver	7.6.8.1
caldsver	3.2.2
date	2006-08-10T10:15:06
revision	2

sched_exp_time	49500.000000
ontime	51531.921203375
ontime2	51528.680213302
ontime3	51522.198292702
ontime5	51538.403203815
ontime6	51535.162143707
ontime7	51531.921203375
ontime8	51538.403273433
l1events	1861360

2.1.4 Events

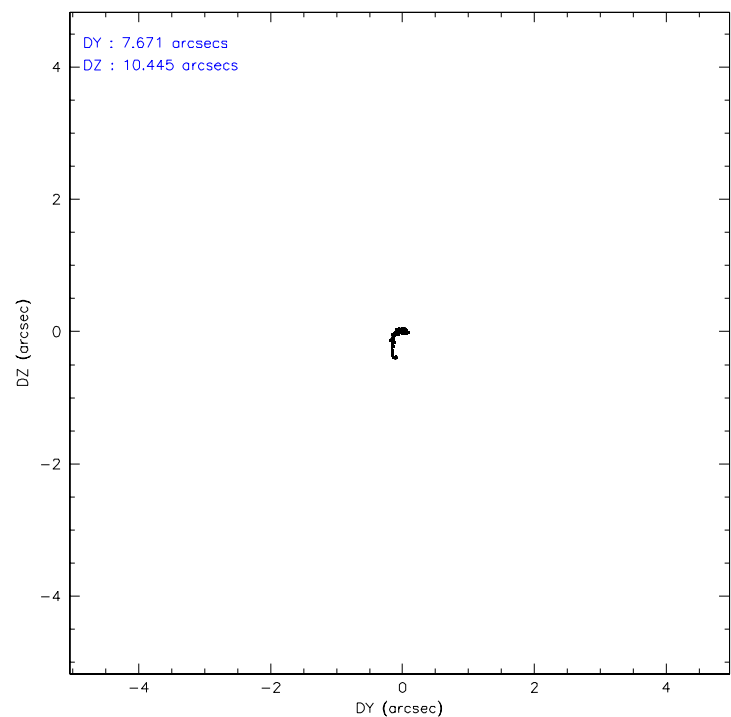
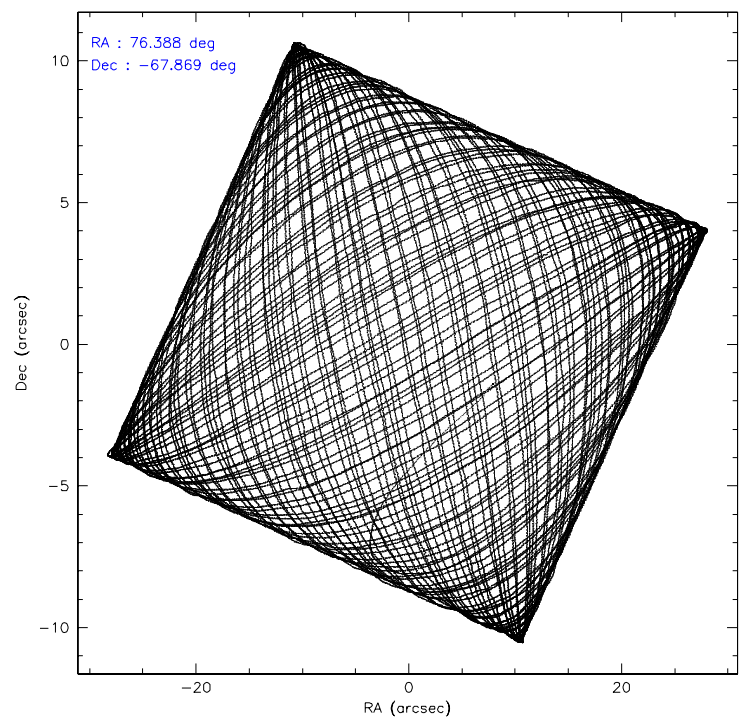
	ccd 2	ccd 3	ccd 5	ccd 6	ccd 7	ccd 8
level 1 events	261859	238478	312372	244552	509084	295015
rejected events	233957	215219	151323	215467	130603	227404
rejected %	89%	90%	48%	88%	25%	77%

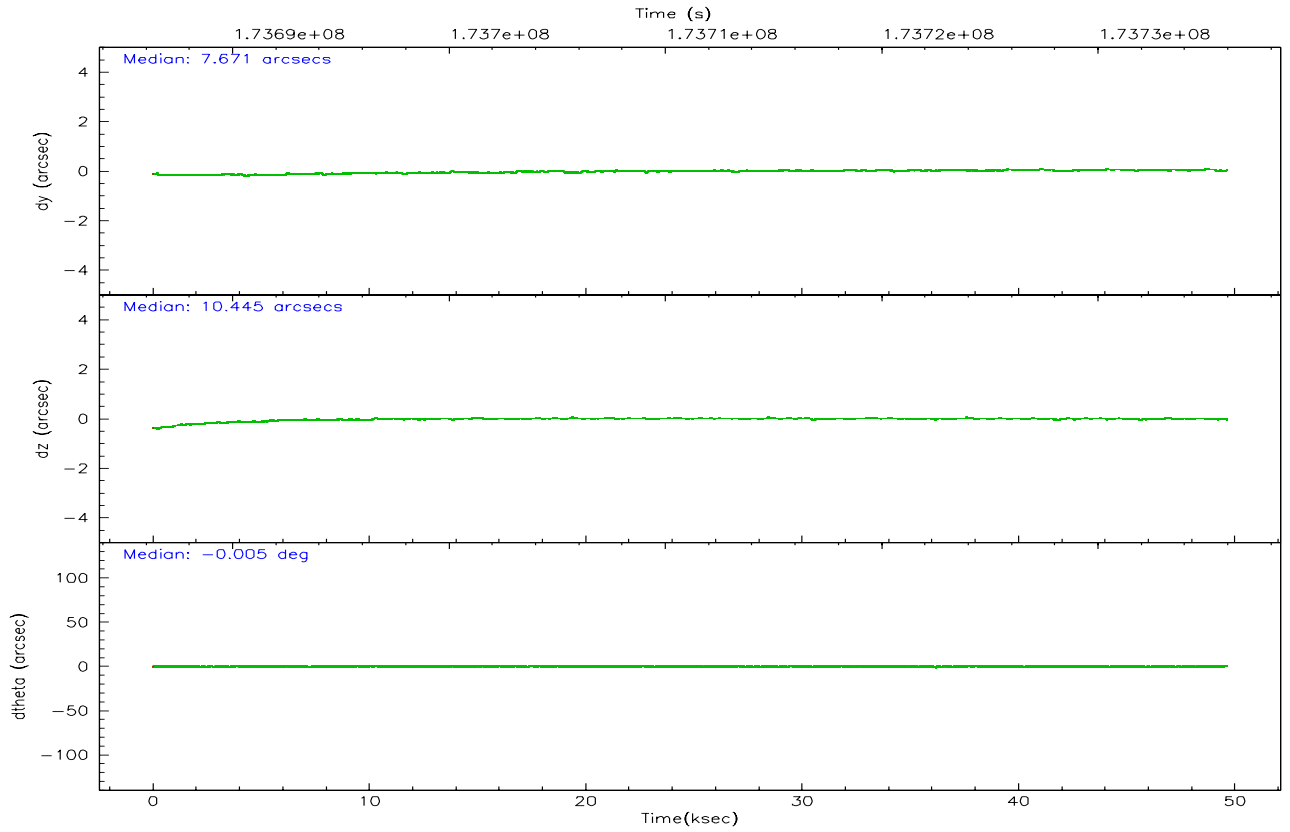
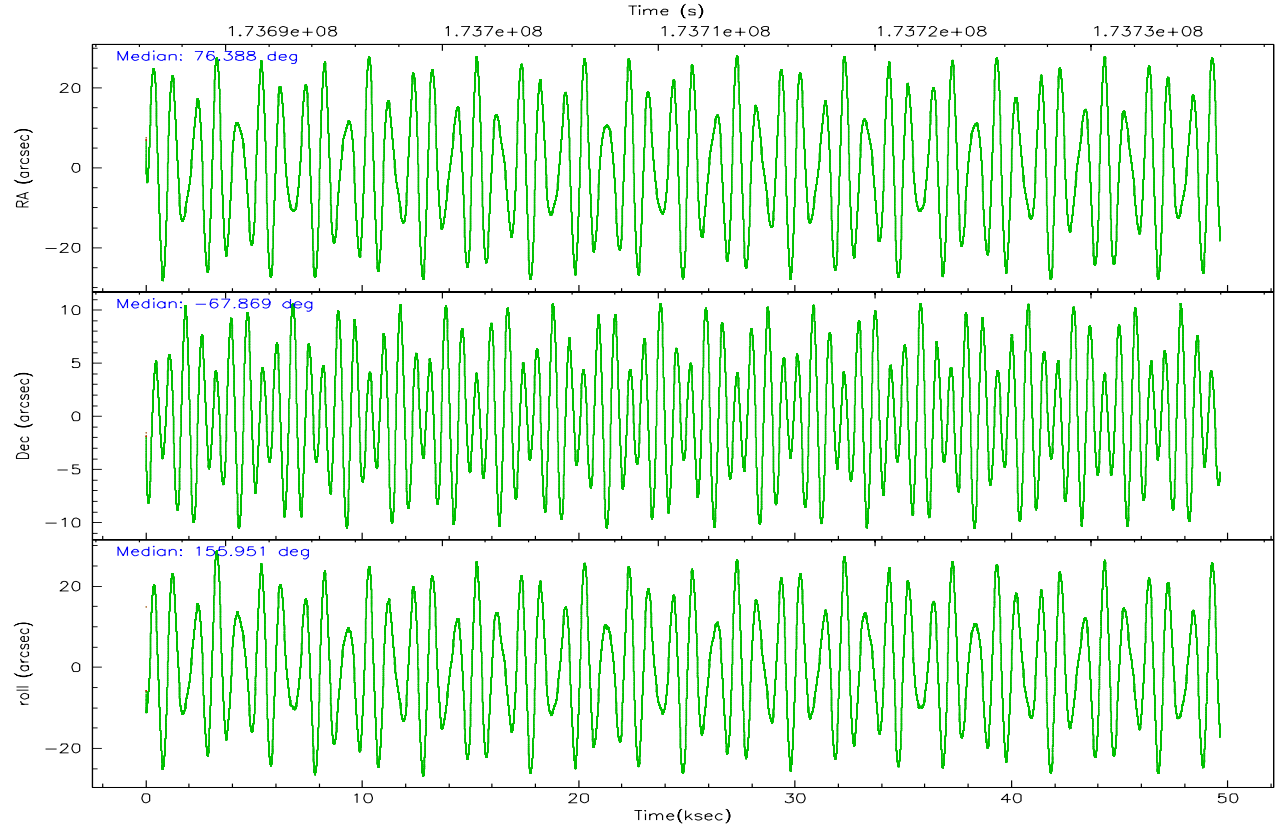
	ccd 2	ccd 3	ccd 5	ccd 6	ccd 7	ccd 8
grade 0 events	13744	10159	9830	14063	102890	22733
	5%	4%	3%	5%	20%	7%
grade 1 events	158	129	111	109	454	211
	0%	0%	0%	0%	0%	0%
grade 2 events	5870	4661	54396	5544	100181	14732
	2%	1%	17%	2%	19%	4%
grade 3 events	2548	2706	5332	2844	38554	7476
	0%	1%	1%	1%	7%	2%
grade 4 events	2631	2502	5142	2783	37333	7161
	1%	1%	1%	1%	7%	2%
grade 5 events	7067	8081	16192	8152	20291	11805
	2%	3%	5%	3%	3%	4%
grade 6 events	4039	4093	92207	4988	104950	18094
	1%	1%	29%	2%	20%	6%
grade 7 events	225802	206147	129162	206069	104431	212803
	86%	86%	41%	84%	20%	72%

2.2 Compared Parameters

Parameter	Planned	Actual	Parameter	Planned	Actual
Instrument	ACIS	ACIS	Obspar format version number	6	6
Detector	ACIS-235678	ACIS-235678	Obspar file type	PREDICTED	ACTUAL
Grating	NONE	NONE	Obspar update status	NONE	UPDATED
Data mode	VFAINT	VFAINT	On-chip summing requested	N	N
Observation mode	POINTING	POINTING	Subarray requested	NONE	NONE
Pointing RA	76.459336	76.38763206618081	Alternating exposures requested	N	N
Pointing Dec	-67.866075	-67.86928817696381	Primary exposure time	0.000000	3.2
Pointing Roll	155.862962	155.9531666587625			
SIM focus pos (mm)	-0.684267	-0.6828225247311905			
SIM defocus (mm)	0	0.001444936568705701			
SIM translation stage pos (mm)	-190.132523	-190.1400660498719			
SIM translation stage offset (mm)	0	0.00754346686406393			
Observation start time	173686463.184000	173684413.01377			
Observation start date	2003-07-04T06:13:19	2003-07-04T05:40:13			
Observation end time	173735963.184000	173736928.89101			
Observation end date	2003-07-04T19:58:19	2003-07-04T20:15:28			
Read mode	TIMED	TIMED			

2.3 Aspect



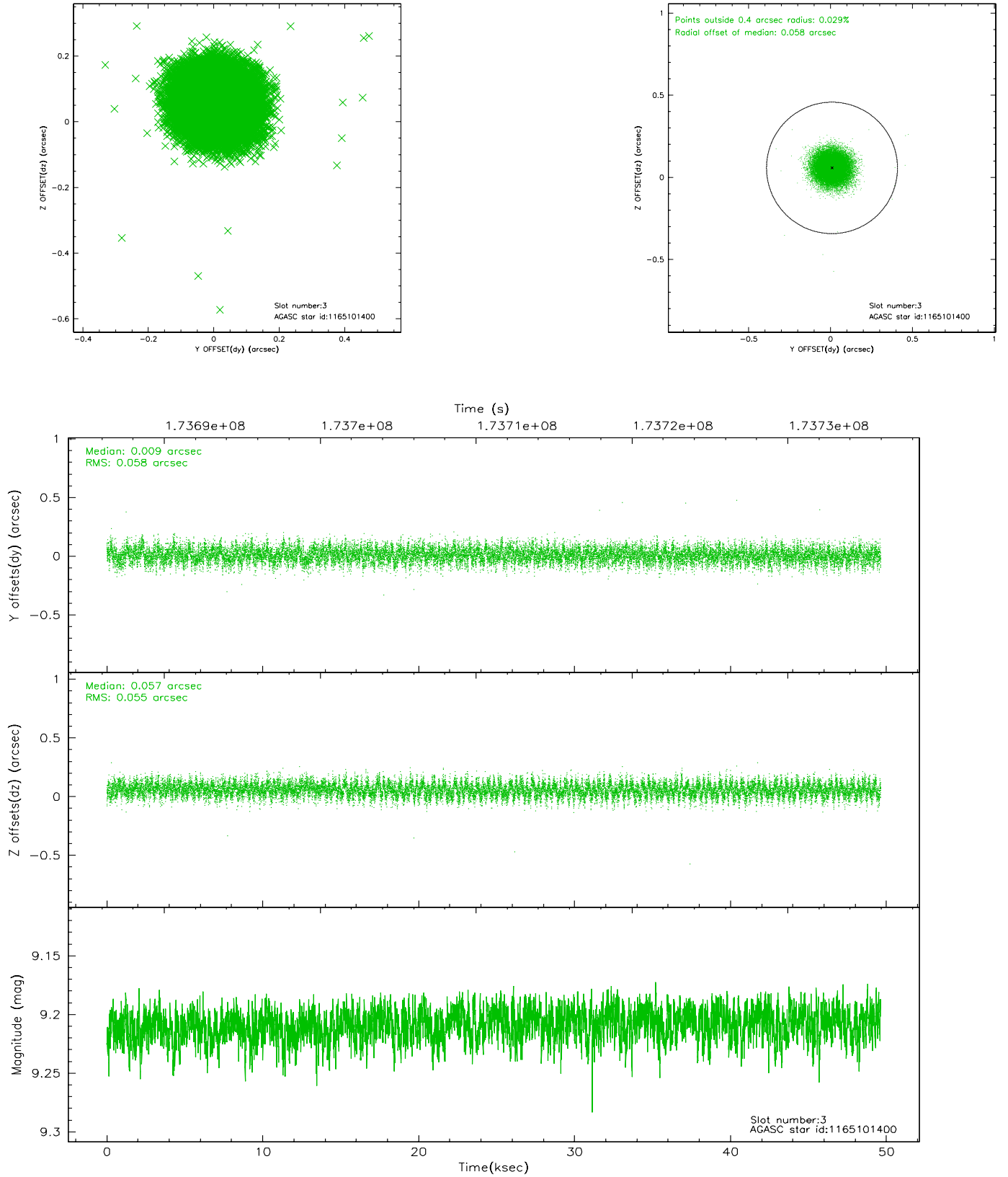


Slot Statistics

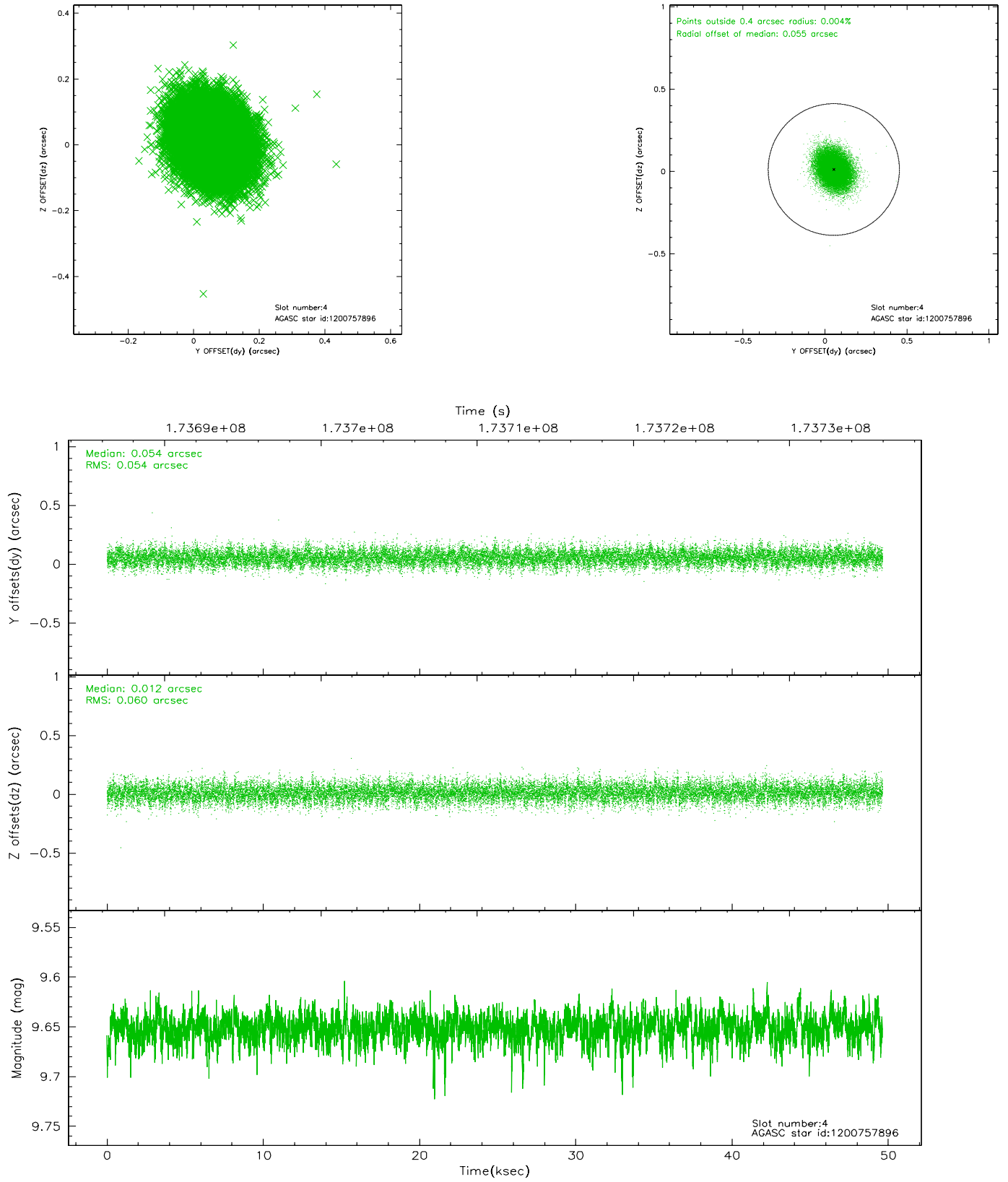
slot	status	id	mag	n_pts	med_dy	med_dz	dr1	dr2	ra	dec	mean_y	mean_z
0	FID	ACIS-S-2	7.10	12093	-0.033	0.011	0.007	0.011	0.000000	0.000000	-760.41	-1731.69
1	FID	ACIS-S-4	7.20	12092	0.037	0.013	0.005	0.009	0.000000	0.000000	2152.90	176.88
2	FID	ACIS-S-5	7.23	12088	-0.036	-0.015	0.007	0.012	0.000000	0.000000	-1813.32	170.41
3	GUIDE	1165101400	9.21	24180	0.009	0.057	0.085	0.136	75.332859	-67.447345	2030.42	-726.54
4	GUIDE	1200757896	9.65	24174	0.054	0.012	0.085	0.140	76.533946	-67.526650	406.41	-1156.95
5	GUIDE	1200882544	8.92	24183	-0.007	0.053	0.080	0.130	78.099449	-67.947843	-2154.83	-610.85
6	GUIDE	1200758584	8.18	24190	-0.041	-0.095	0.055	0.089	75.674293	-67.843121	1003.87	366.69
7	GUIDE	1200758760	8.31	24189	-0.014	-0.030	0.059	0.093	76.277764	-68.086435	-101.63	824.19

2.4 Star Slots

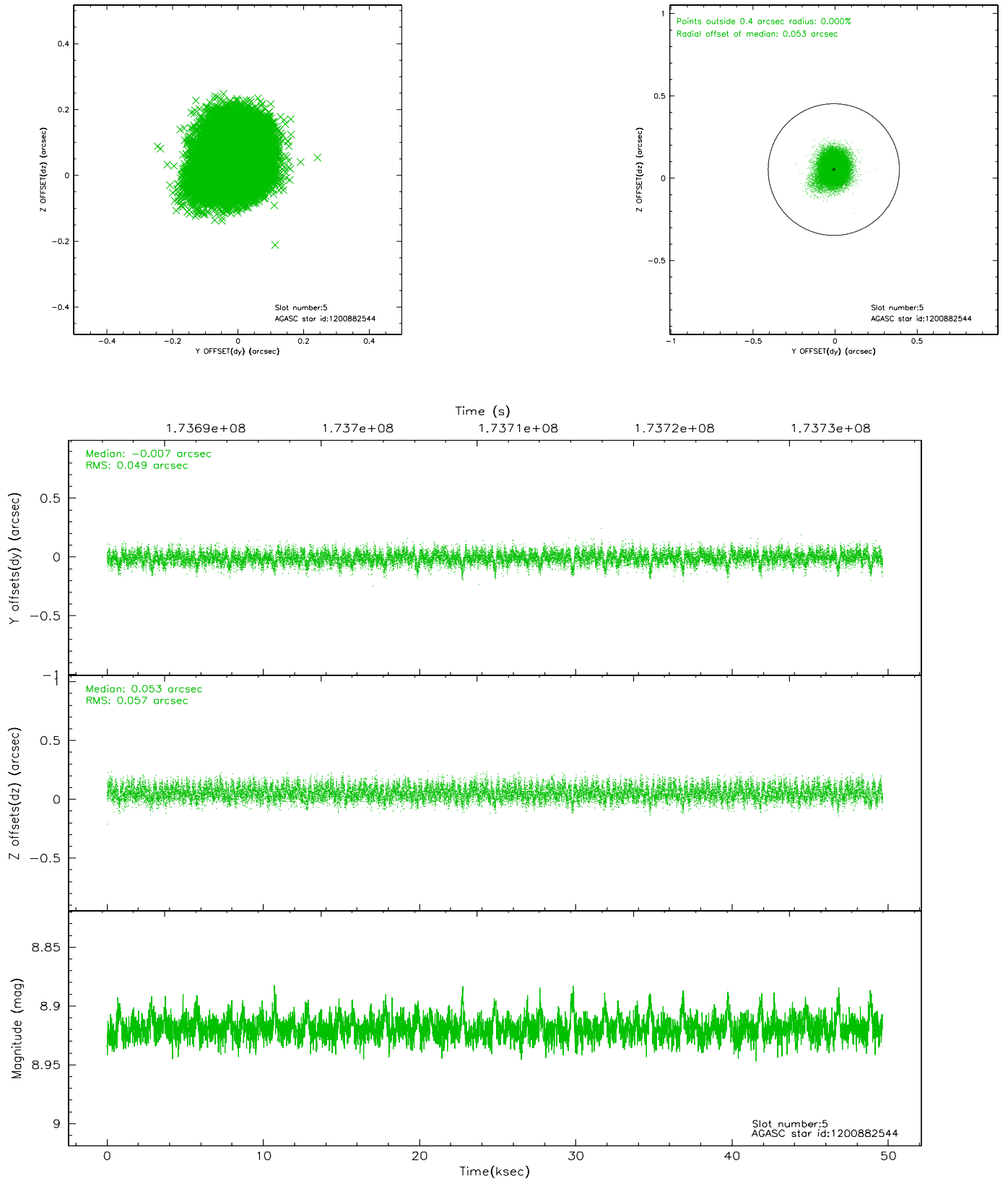
2.4.1 Slot 3



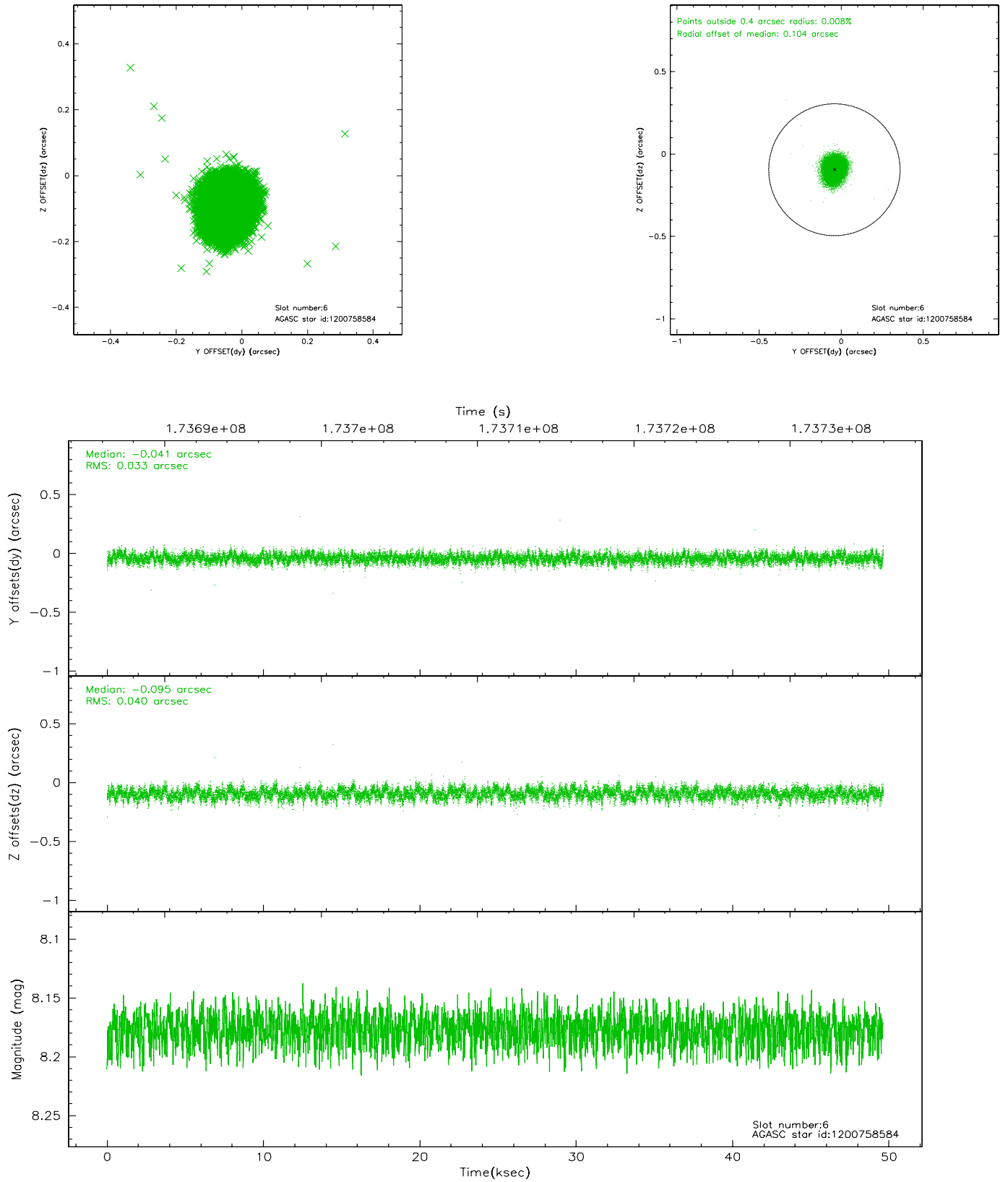
2.4.2 Slot 4



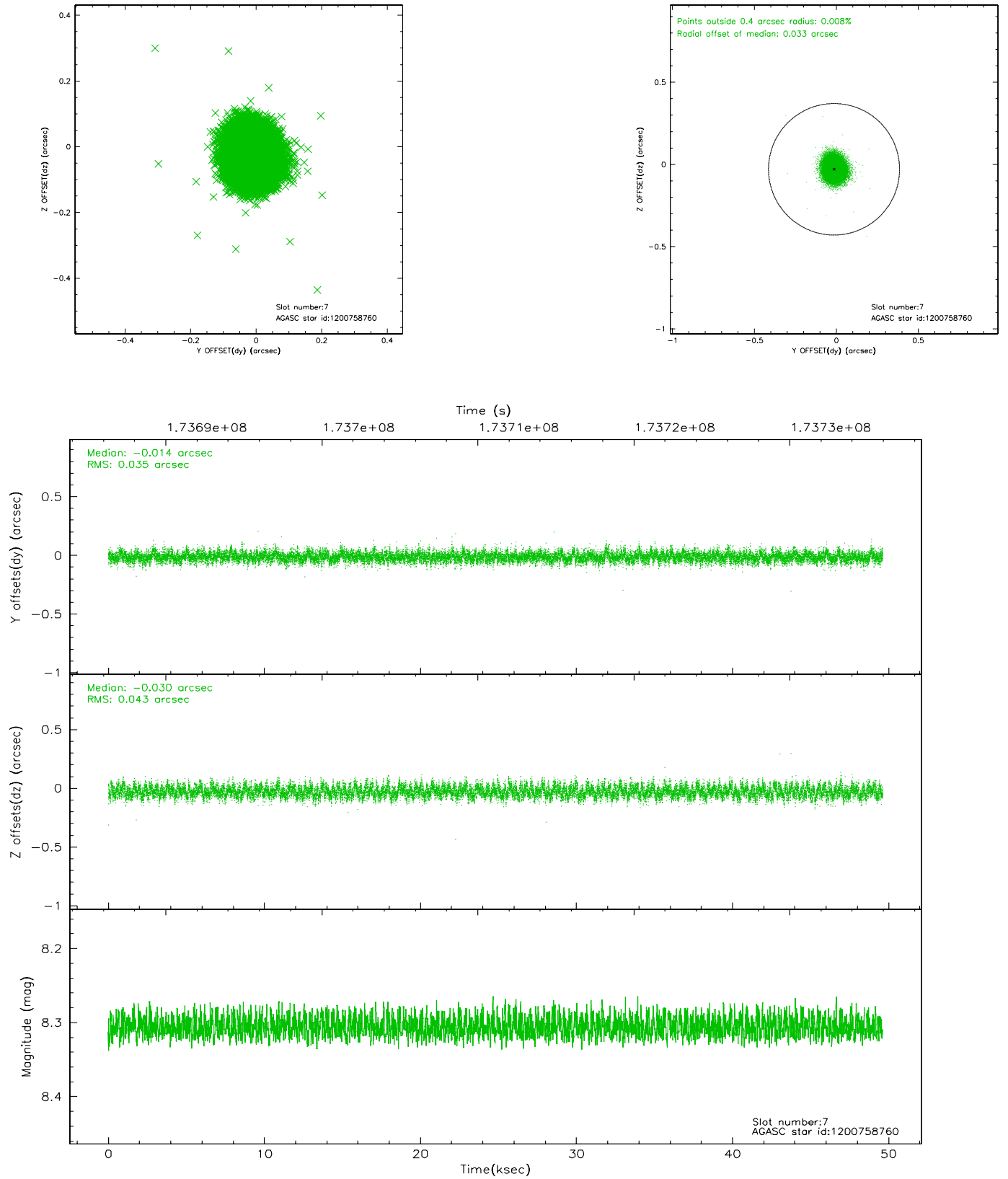
2.4.3 Slot 5



2.4.4 Slot 6

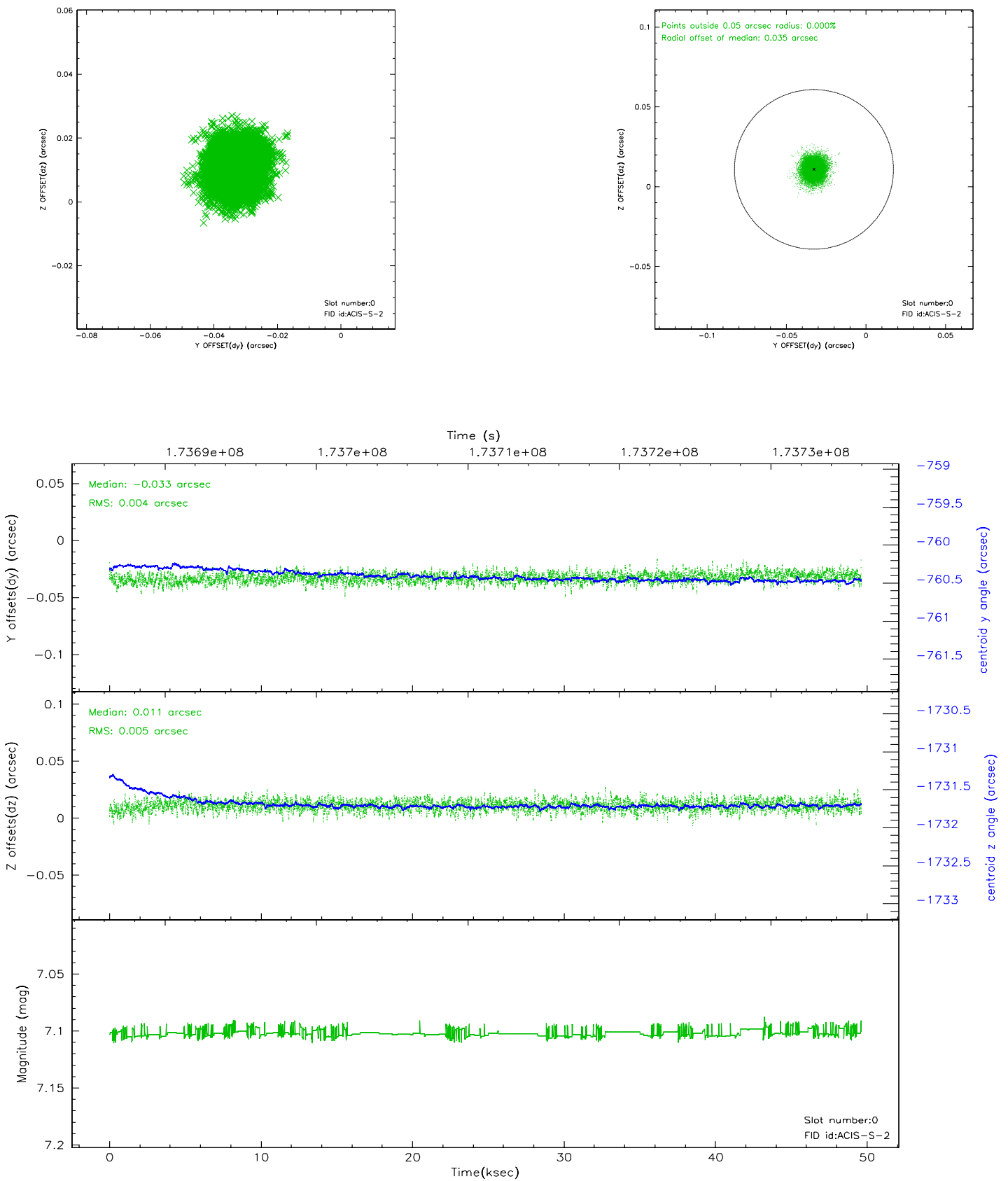


2.4.5 Slot 7

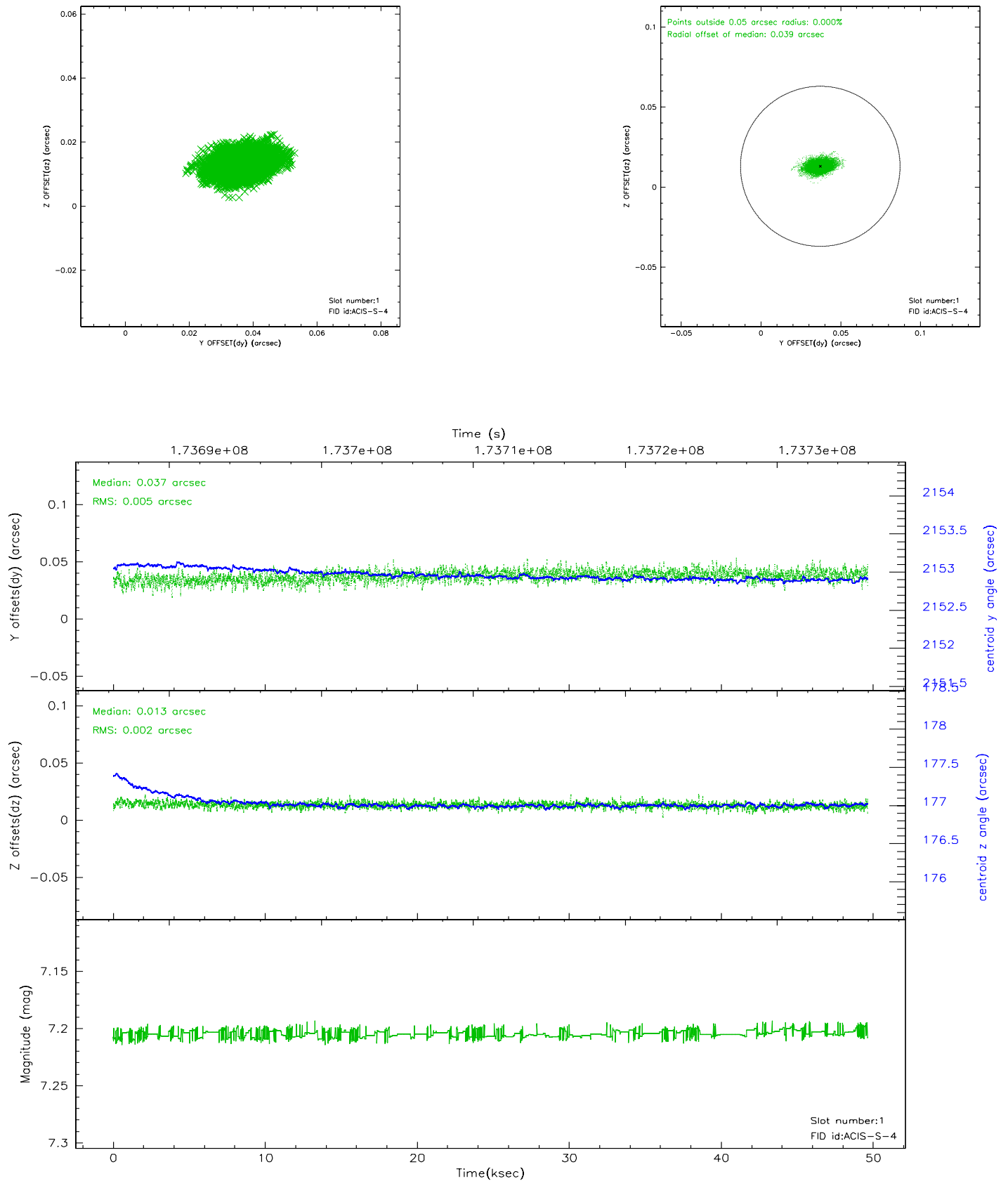


2.5 FID Slots

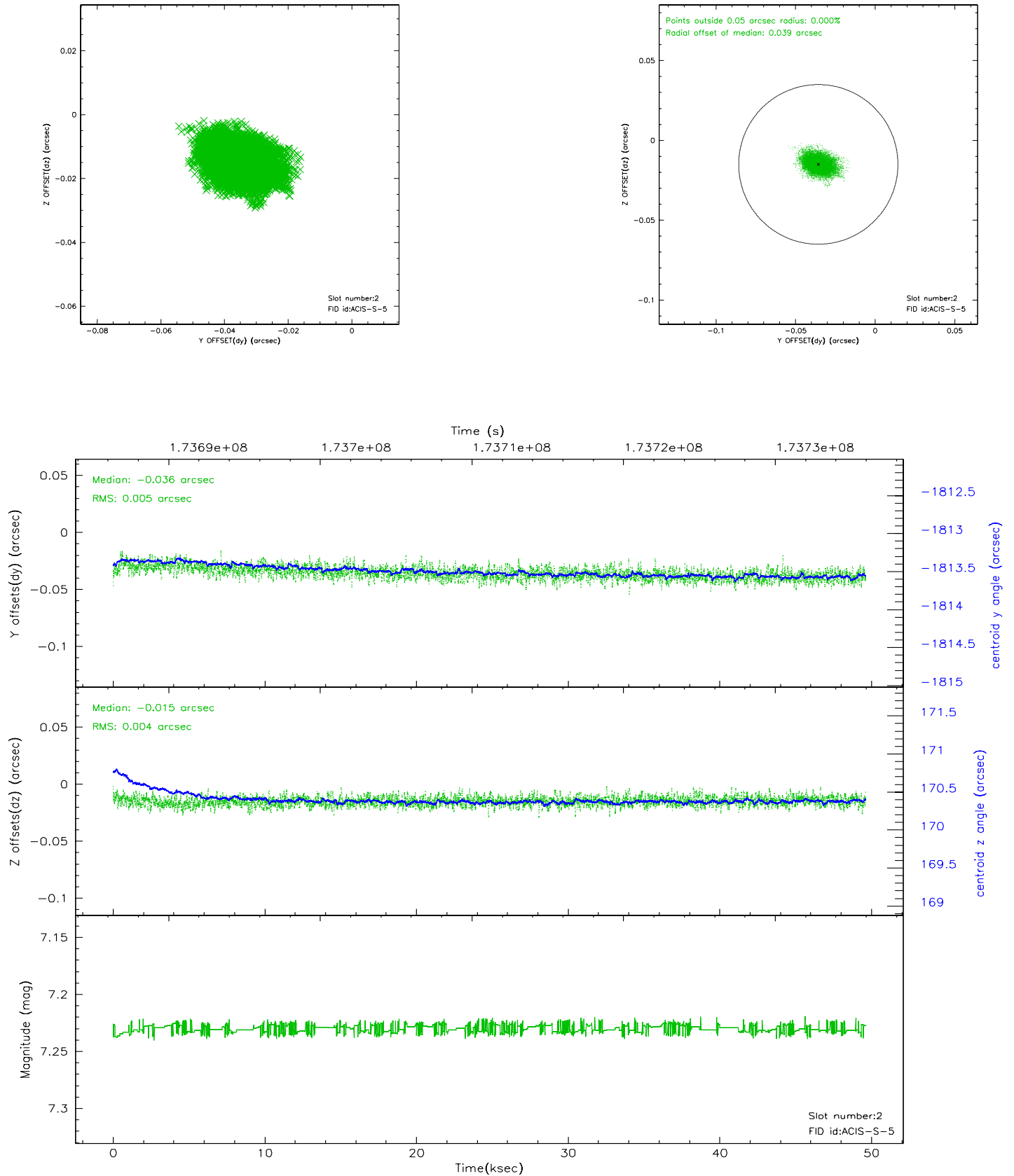
2.5.1 Slot 0



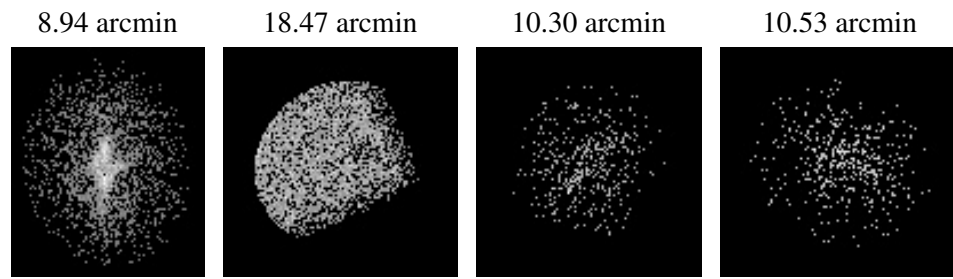
2.5.2 Slot 1



2.5.3 Slot 2



3 Point Sources



A Summary

A.1 Status

V&V Scientist	Beth Sundheim
V&V Date (YYYY-MM-DD)	2006.08.10
V&V Edition	1
V&V Disposition and Status	OK
V&V Charge Time	49.61

A.2 Comments

Focal plane temperature is warmer than -118 degrees during initial ~5 ksec of observation. The ACIS calibrations are not verified or necessarily applicable for focal plane temperatures warmer than -118 degrees.