

V&V Reference Report

L2 ASCDS Version : 8.4.5

Observation 3849 - L2 Version 3
Chandra X-Ray Center

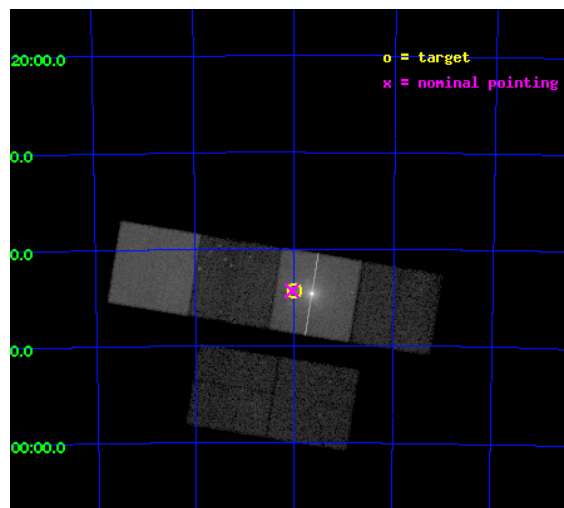
L2 Processing Date : Nov 8 2012

Contents

1	Front	2
2	OBI	3
2.1	OBI	3
2.1.1	Images	3
2.1.2	Parameters	4
2.1.3	Events	4
2.2	Compared Parameters	5
2.3	Aspect	6
2.4	Star Slots	9
2.4.1	Slot 3	9
2.4.2	Slot 4	10
2.4.3	Slot 5	11
2.4.4	Slot 6	12
2.4.5	Slot 7	13
2.5	FID Slots	14
2.5.1	Slot 0	14
2.5.2	Slot 1	15
2.5.3	Slot 2	16
A	Summary	17
A.1	Status	17
A.2	Comments	17

1 Front

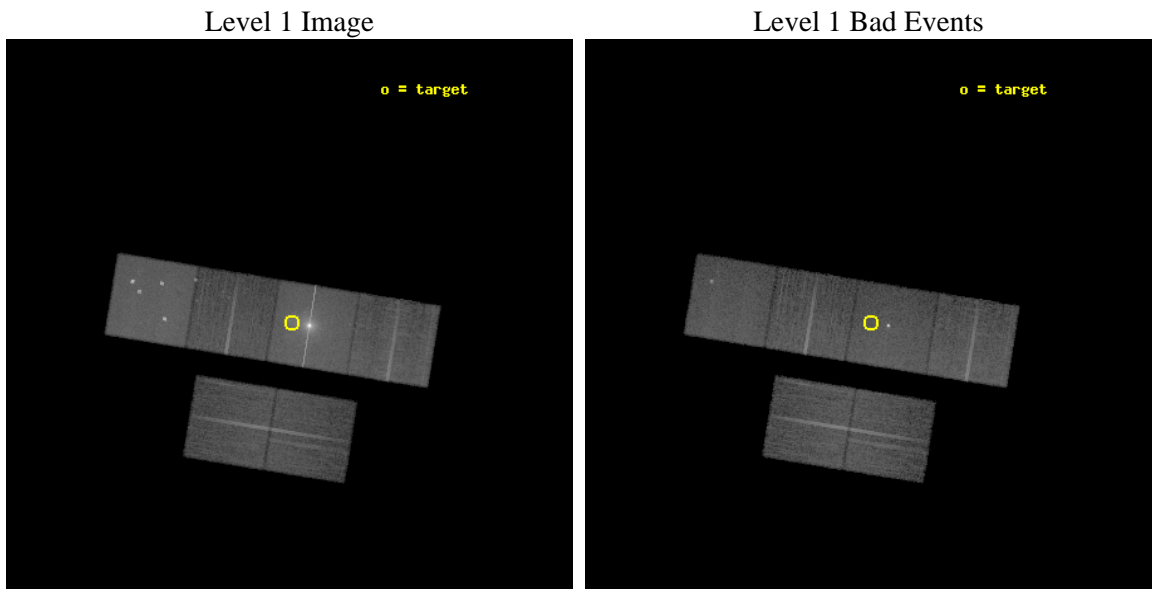
seq_num	500328	Sequence number
obs_id	3849	Observation id
title	SUPERNOVA REMNANTS IN THE MAGELLANIC CLOUDS	Proposal title
observer	Frederick Seward	Principal investigator
object	0540-697	Source name
dtcycle	0	
cycle	P	events from which exps? Prim/Second/Both
ra_targ	85.0	Observer's specified target RA [deg]
dec_targ	-69.7375	Observer's specified target Dec [deg]
ra_nom	85.01223471844	Nominal RA [deg]
dec_nom	-69.738515627562	Nominal Dec [deg]
roll_nom	9.2393105699974	Nominal Roll [deg]
revision	3	Processing version of data
ontime	21126.358951002	Sum of GTIs [s]
livetime	20858.844273199	Livetime [s]
ontime2	21129.599921286	Sum of GTIs [s]
ontime3	21129.599921286	Sum of GTIs [s]
ontime5	21129.599921286	Sum of GTIs [s]
ontime6	21129.599921286	Sum of GTIs [s]
ontime7	21126.358951002	Sum of GTIs [s]
ontime8	21129.599921286	Sum of GTIs [s]
l2events	363739	Number of level 2 events



2 OBI

2.1 OBI

2.1.1 Images



2.1.2 Parameters

obi_num	1	Obi number	sched_exp_time	20983.809000	[s] Scheduled observation exposure time
ascdsver	8.4.5	Processing system revision	ontime	21126.358951002	Sum of GTIs [s]
caldsver	4.5.2	 	ontime2	21129.599921286	Sum of GTIs [s]
date	2012-11-08T08:12:31	Date and time of file creation	ontime3	21129.599921286	Sum of GTIs [s]
revision	3	Processing version of data	ontime5	21129.599921286	Sum of GTIs [s]
			ontime6	21129.599921286	Sum of GTIs [s]
			ontime7	21126.358951002	Sum of GTIs [s]
			ontime8	21129.599921286	Sum of GTIs [s]
			l1events	1089008	Number of level 1 events

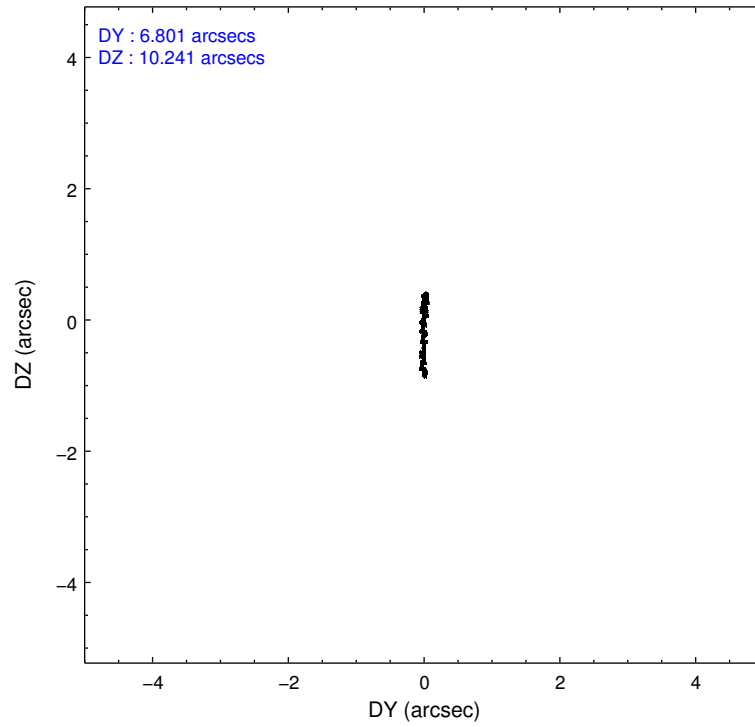
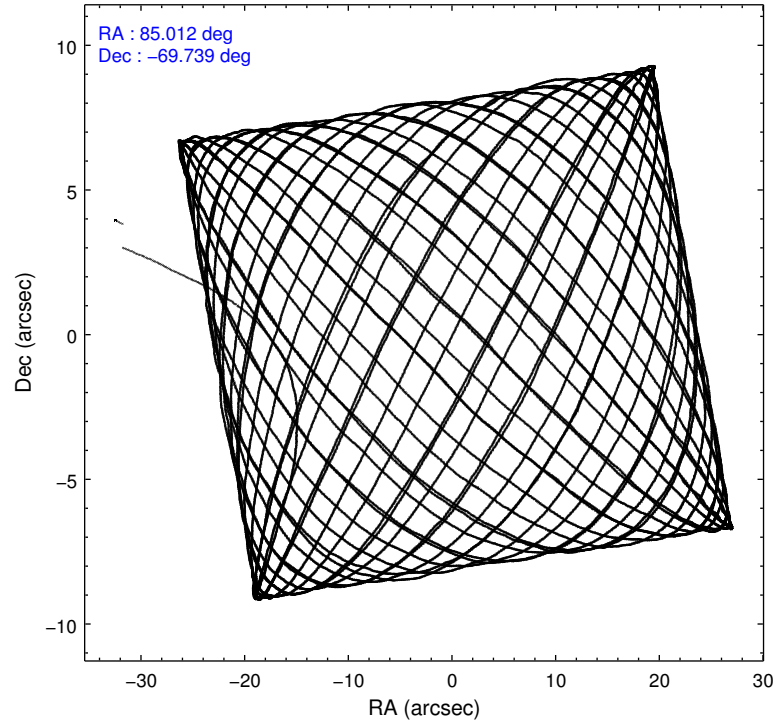
2.1.3 Events

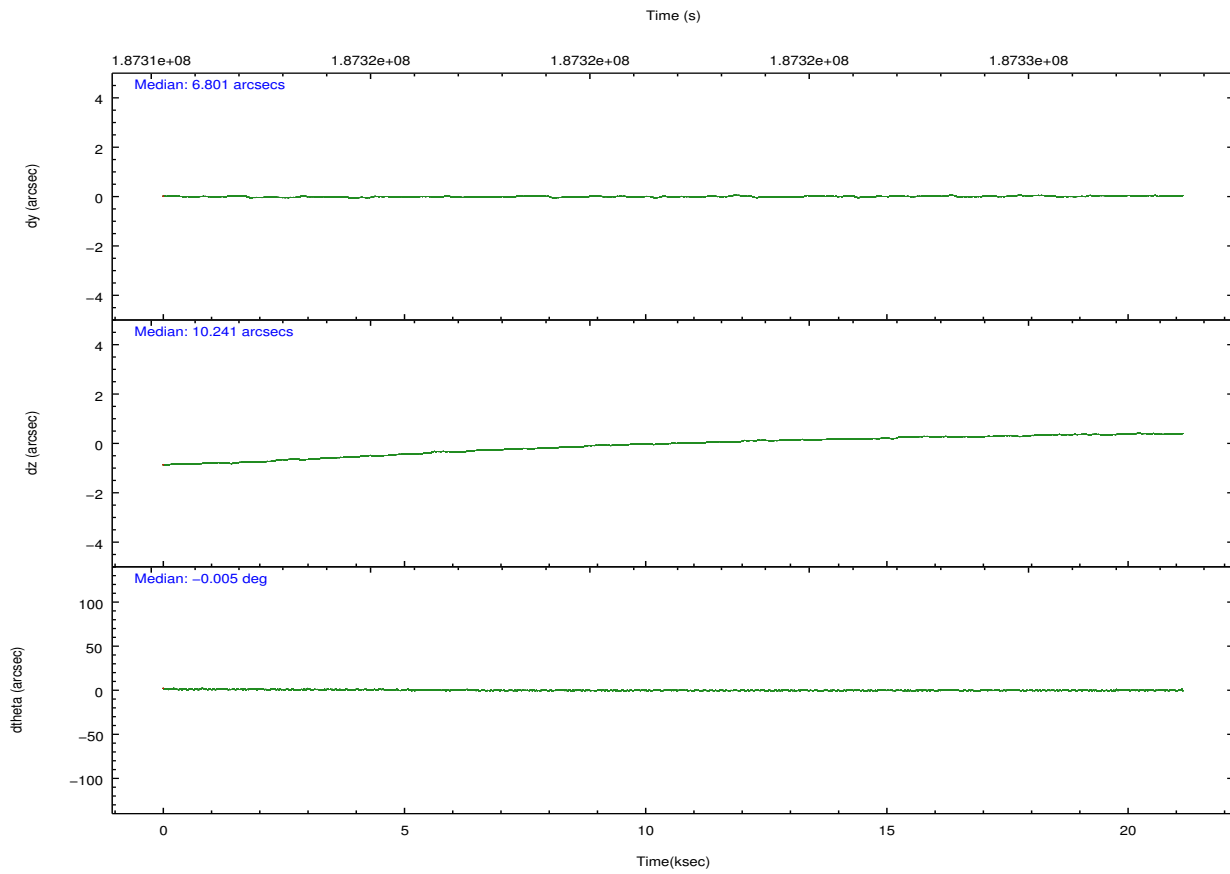
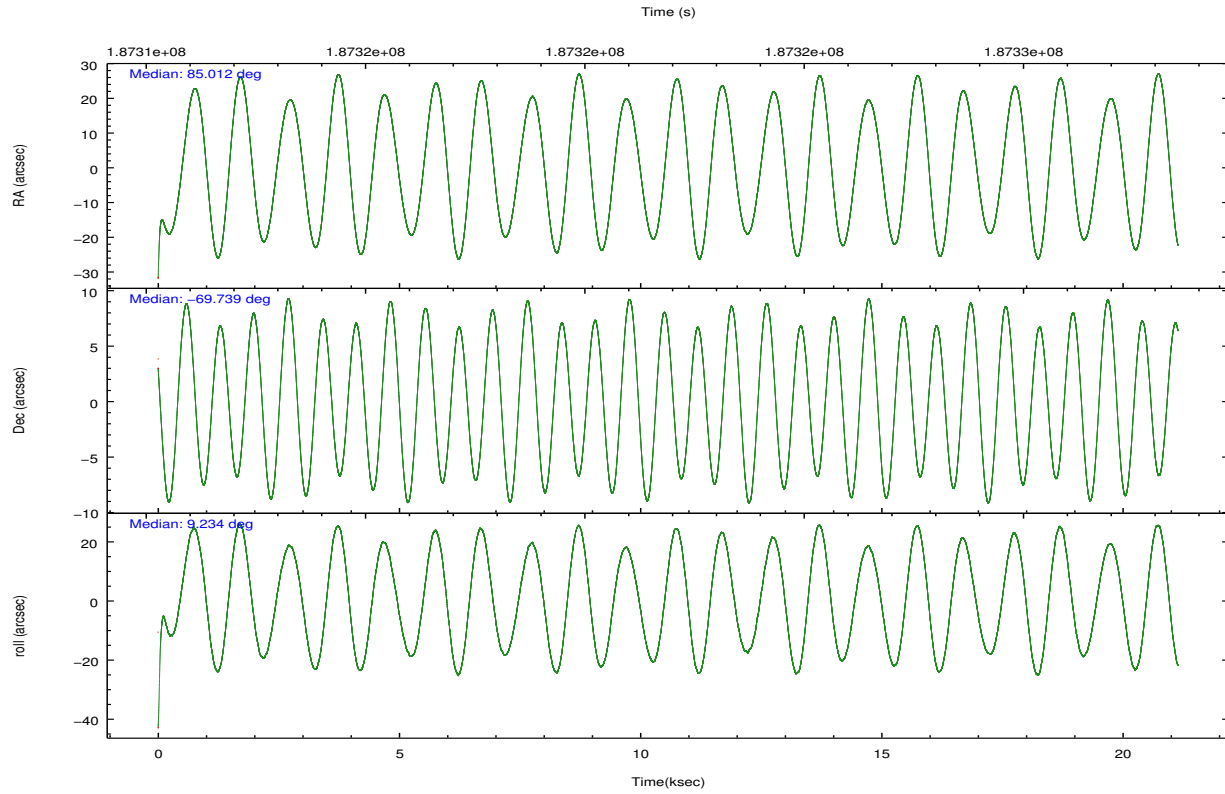
	ccd 2	ccd 3	ccd 5	ccd 6	ccd 7	ccd 8		ccd 2	ccd 3	ccd 5	ccd 6	ccd 7	ccd 8
level 1 events	129916	121273	220077	135190	318767	163785	grade 0 events	8009	6657	23962	13744	33452	13698
rejected events	110978	104171	106617	108830	119585	124507		6%	5%	10%	10%	10%	8%
rejected %	85%	85%	48%	80%	37%	76%	grade 1 events	47	35	1105	71	929	86
								0%	0%	0%	0%	0%	0%
							grade 2 events	5476	4917	33947	6256	55411	9702
								4%	4%	15%	4%	17%	5%
							grade 3 events	1173	1223	2988	1355	17074	3603
								0%	1%	1%	1%	5%	2%
							grade 4 events	1182	1177	2990	1320	16760	3324
								0%	0%	1%	0%	5%	2%
							grade 5 events	4119	4578	8961	4888	14269	6454
								3%	3%	4%	3%	4%	3%
							grade 6 events	3246	3265	50448	3886	78160	9321
								2%	2%	22%	2%	24%	5%
							grade 7 events	106664	99421	95676	103670	102712	117597
								82%	81%	43%	76%	32%	71%

2.2 Compared Parameters

Parameter	Planned	Actual	Parameter	Planned	Actual
Instrument	ACIS	ACIS	Obspar format version number	7	7
Detector	ACIS-235678	ACIS-235678	Obspar file type	PREDICTED	ACTUAL
Grating	NONE	NONE	Obspar update status	NONE	UPDATED
Data mode	GRADED	GRADED	Number of optional ACIS chips dropped	0	0
Observation mode	POINTING	POINTING	On-chip summing requested	N	N
[deg] Pointing RA	84.951979	85.01223471844045	Subarray requested	NONE	NONE
[deg] Pointing Dec	-69.756021	-69.73851562756181	Alternating exposures requested	N	N
[deg] Pointing Roll	9.026166	9.239310569997444	[s] Primary exposure time	0.000000	3.2
[mm] SIM focus pos	-0.684267	-0.6828225247311905			
[mm] SIM defocus	0	0.001444936568705701			
[mm] SIM translation stage pos	-190.132523	-190.1400660498719			
[mm] SIM translation stage offset	0	0.00754346686406393			
[s] Observation start time (MET)	187311480.184000	187310343.34889			
Observation start date	2003-12-08T22:56:56	2003-12-08T22:39:03			
[s] Observation end time (MET)	187332464.184000	187332779.06236			
Observation end date	2003-12-09T04:46:40	2003-12-09T04:52:59			
Read mode	TIMED	TIMED			

2.3 Aspect



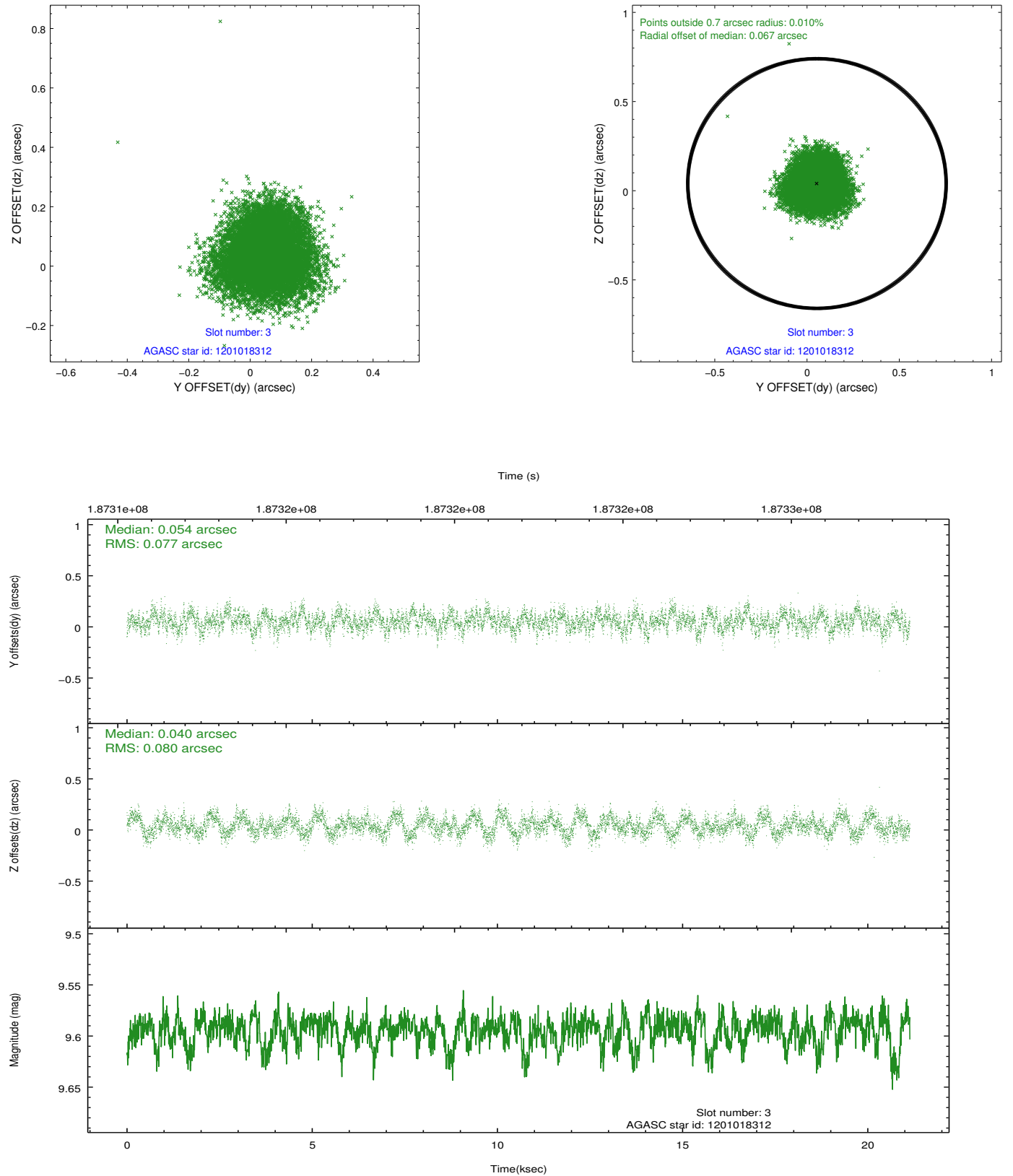


Slot Statistics

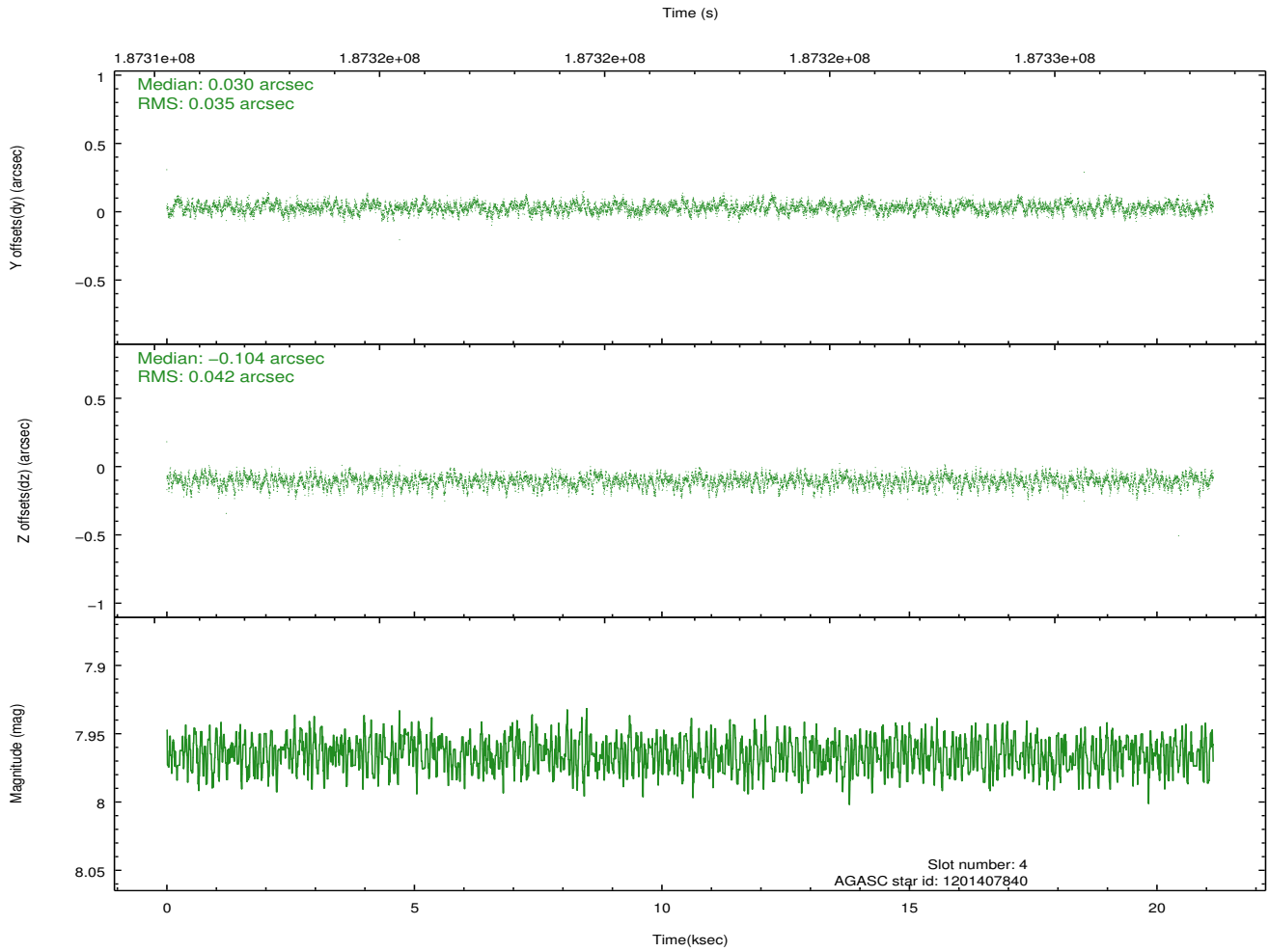
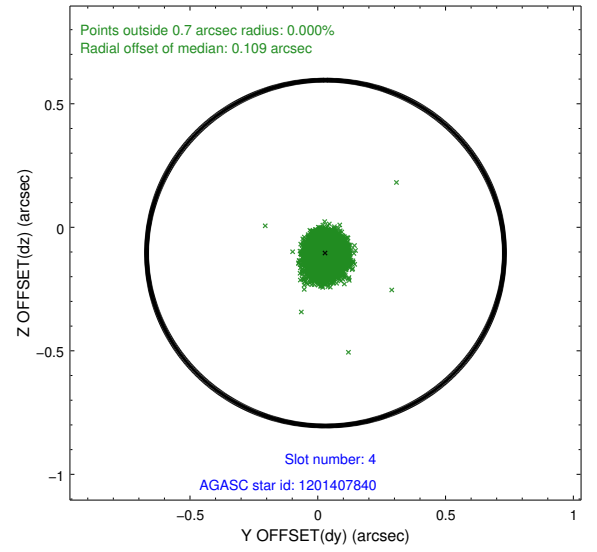
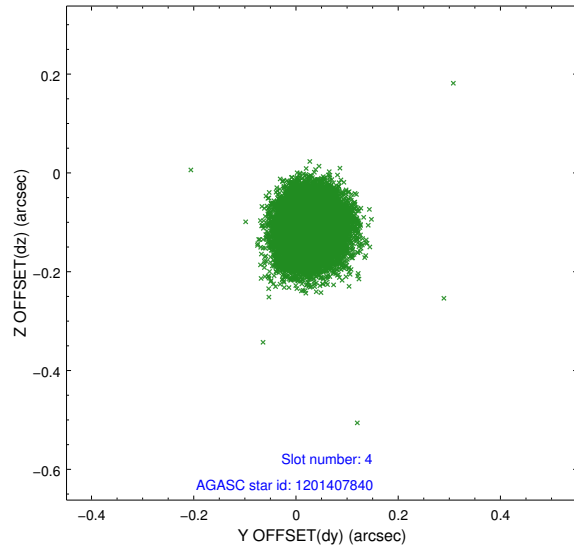
slot	status	id	mag	n_pts	med_dy	med_dz	dr1	dr2	ra	dec	mean_y	mean_z
0	FID	ACIS-S-2	7.10	5156	-0.060	-0.025	0.010	0.019	0.000000	0.000000	-759.58	-1731.44
1	FID	ACIS-S-4	7.20	5155	0.087	0.036	0.005	0.011	0.000000	0.000000	2153.74	176.98
2	FID	ACIS-S-5	7.23	5155	-0.058	-0.002	0.009	0.019	0.000000	0.000000	-1812.23	170.74
3	GUIDE	1201018312	9.59	10305	0.054	0.040	0.120	0.186	86.298231	-69.115627	2065.26	1987.56
4	GUIDE	1201407840	7.96	10311	0.030	-0.104	0.058	0.093	83.696303	-70.172201	-1751.04	-1254.73
5	GUIDE	1201539448	8.93	10308	-0.041	0.048	0.084	0.138	85.635707	-70.382152	462.34	-2360.15
6	GUIDE	1201540760	8.54	10310	-0.006	0.069	0.079	0.128	84.403691	-70.419249	-1027.67	-2257.26
7	GUIDE	1201541752	7.36	10310	-0.039	-0.046	0.053	0.087	85.373891	-70.033762	355.47	-1070.65

2.4 Star Slots

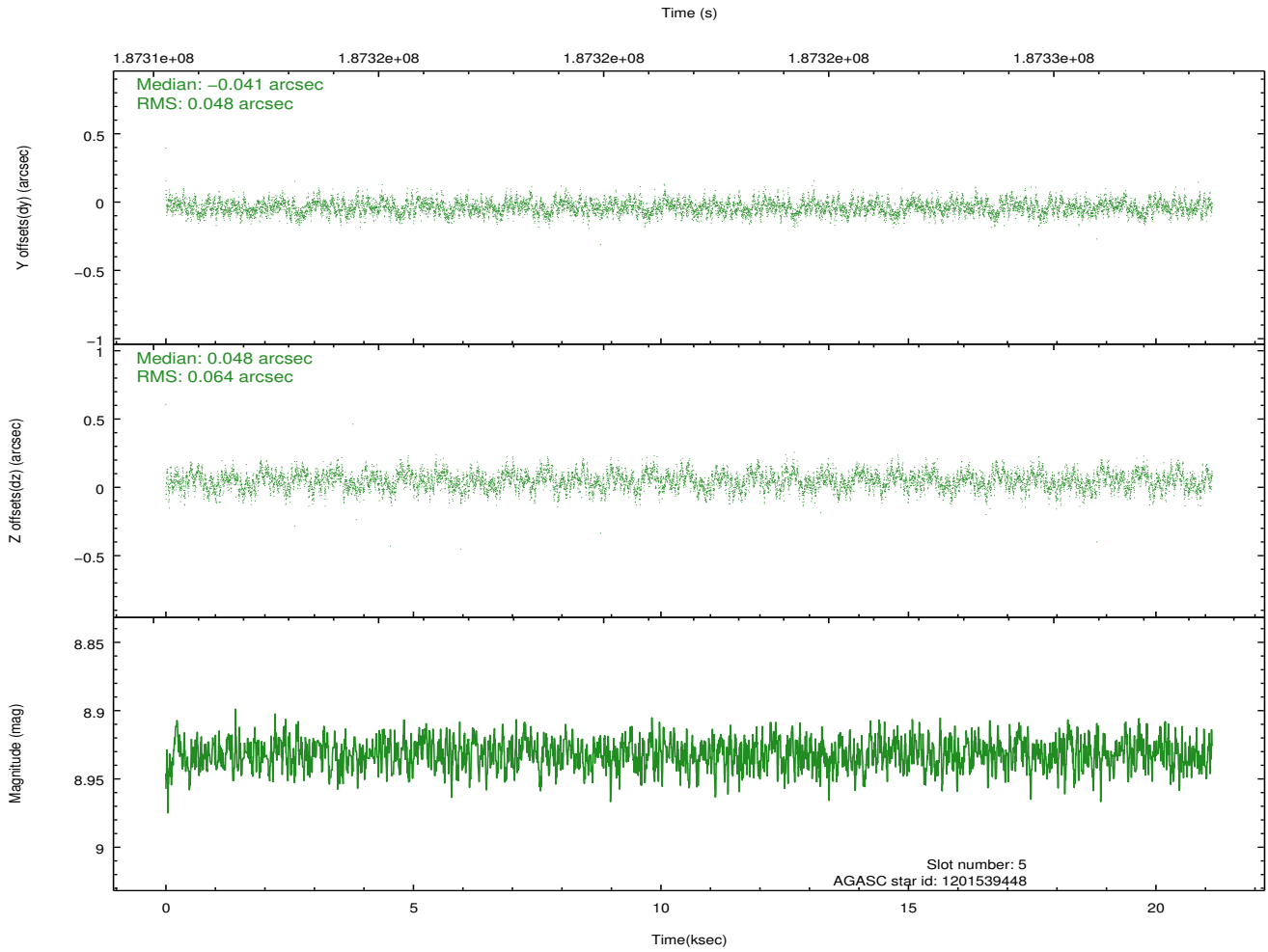
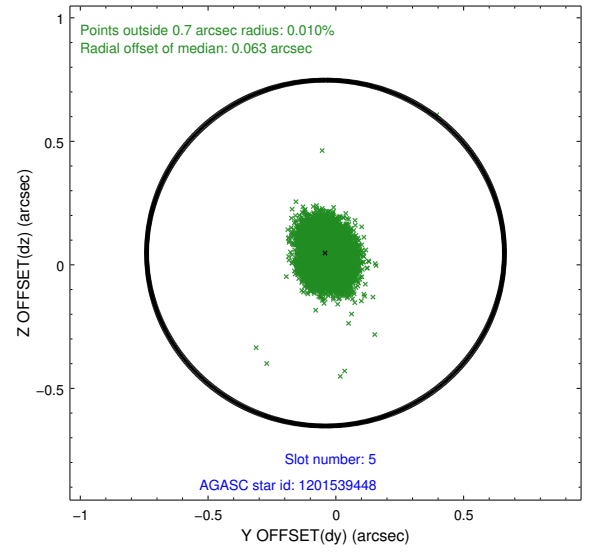
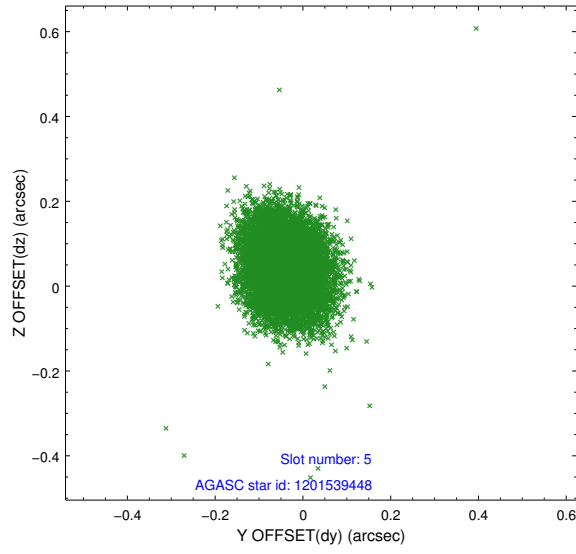
2.4.1 Slot 3



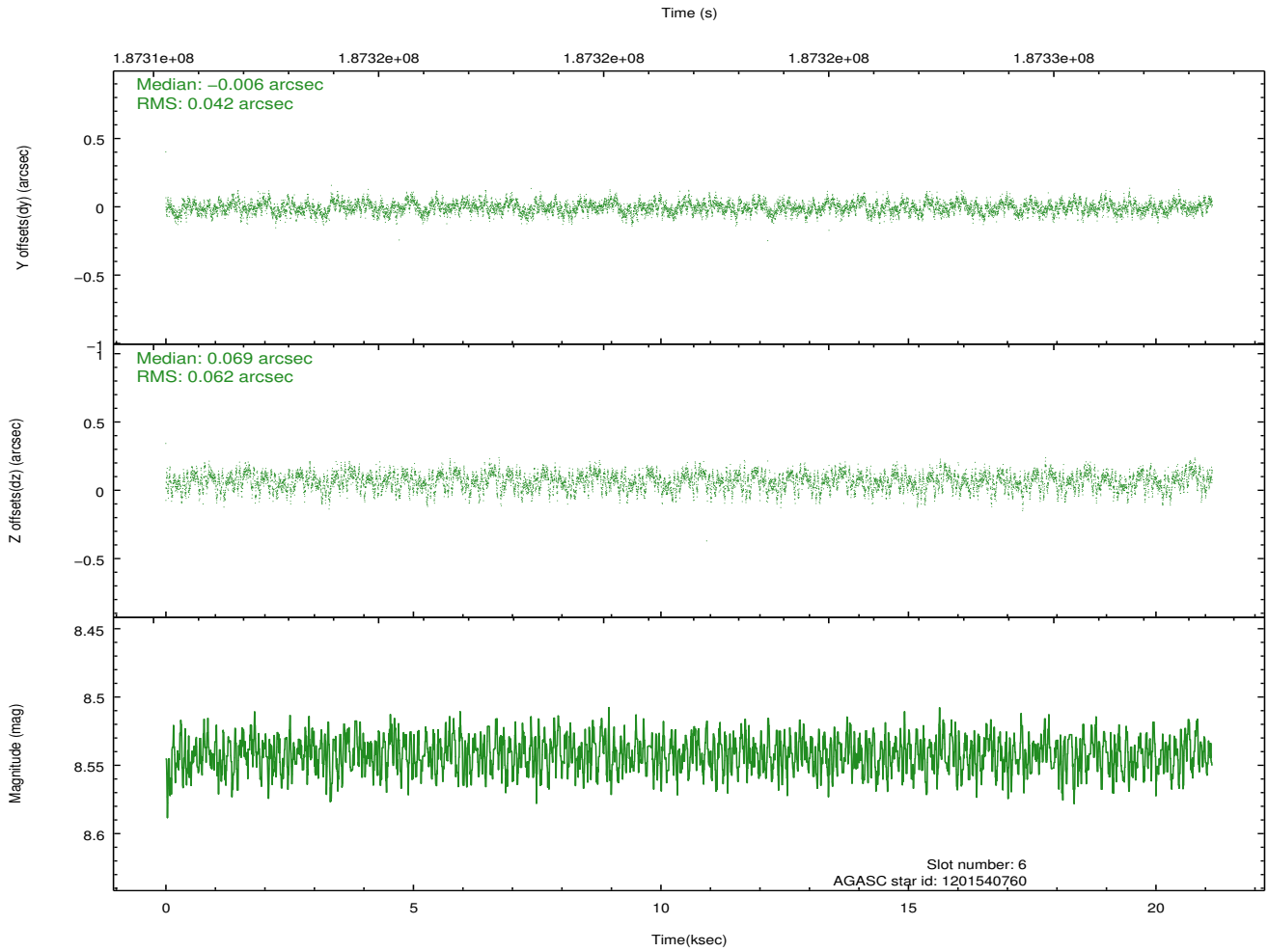
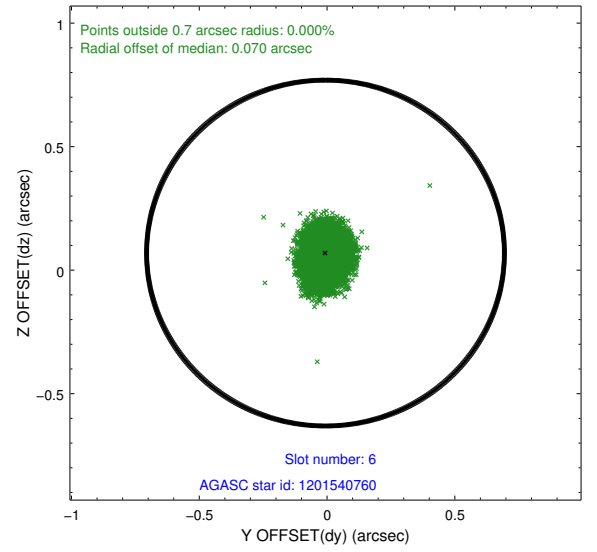
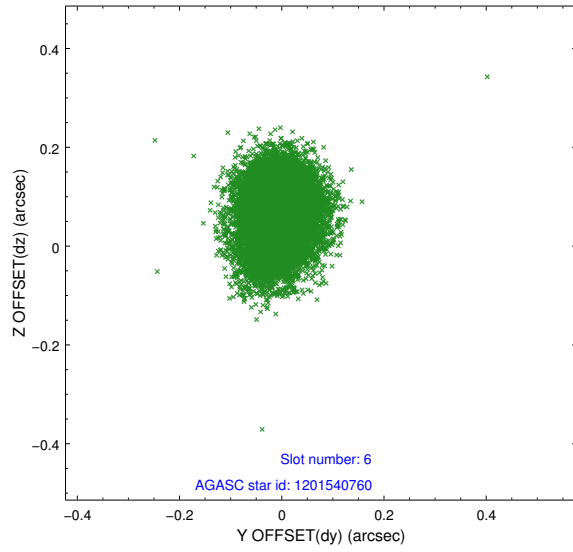
2.4.2 Slot 4



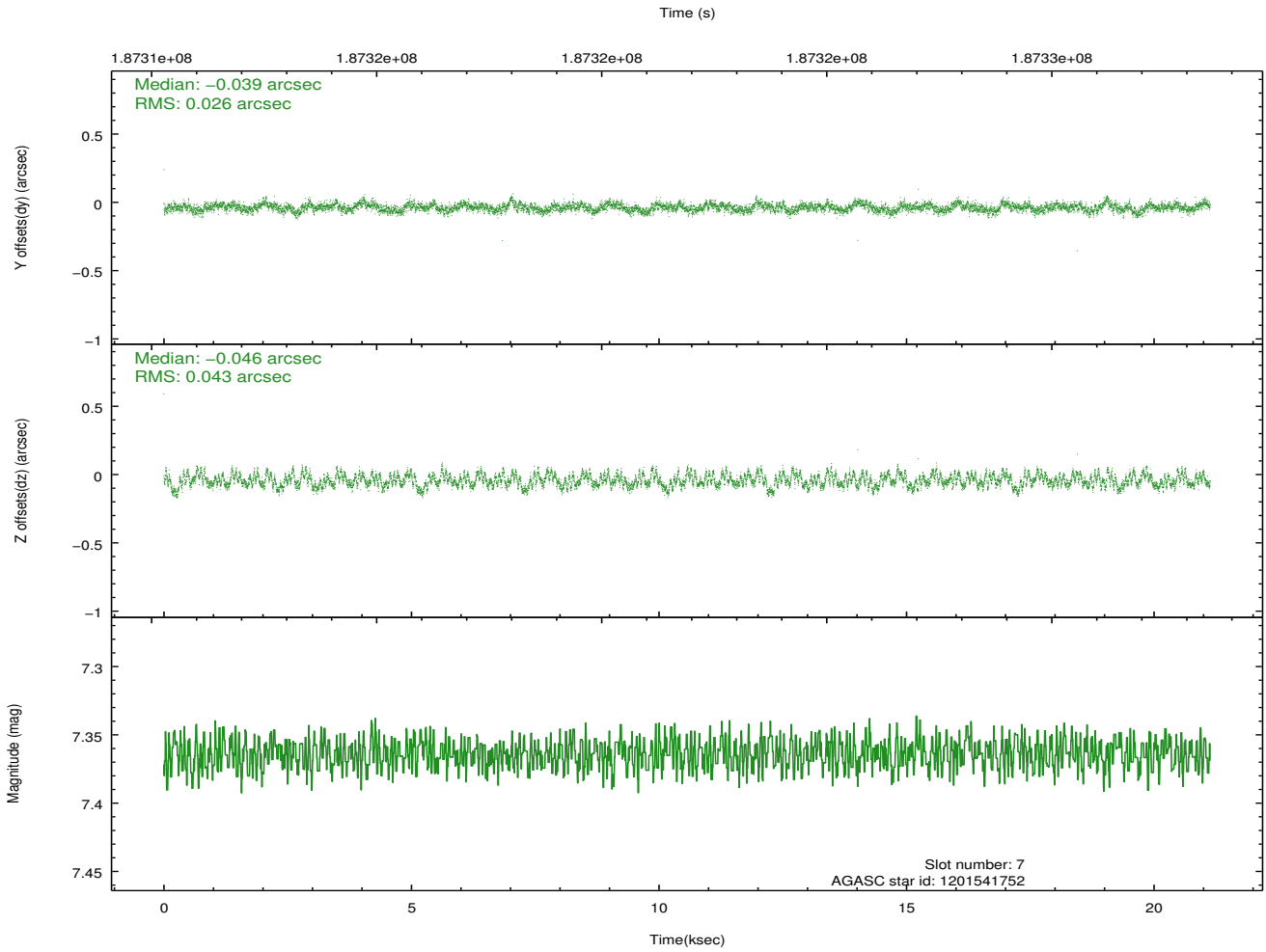
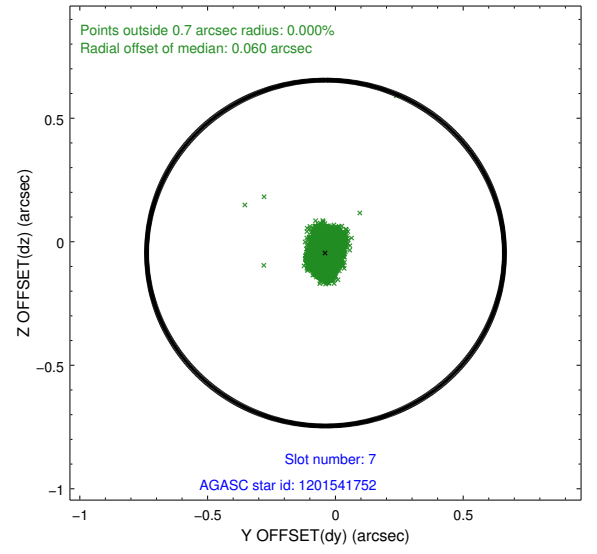
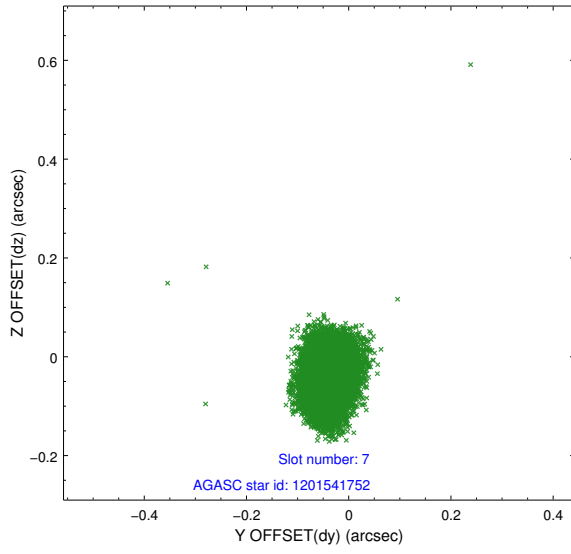
2.4.3 Slot 5



2.4.4 Slot 6

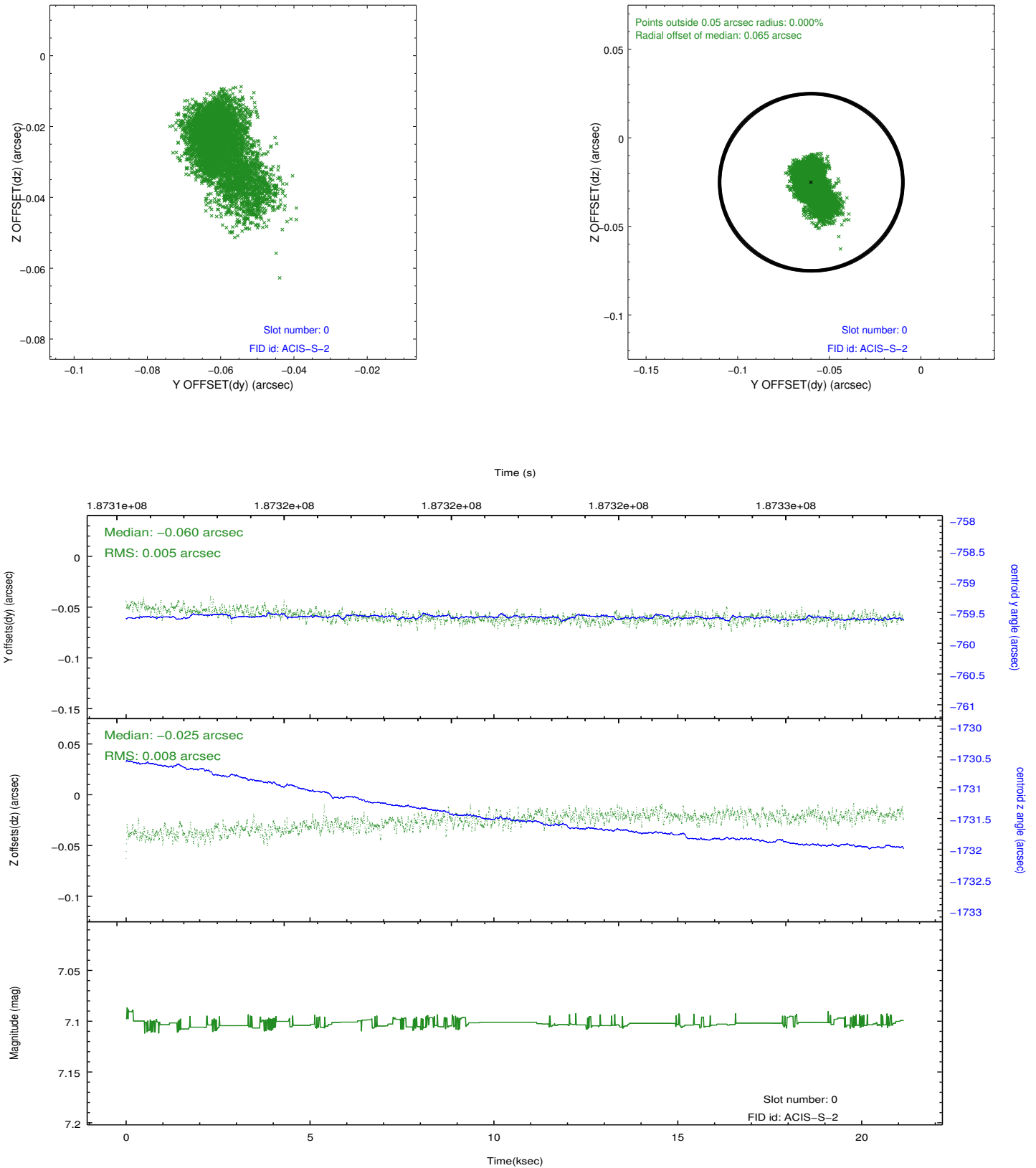


2.4.5 Slot 7

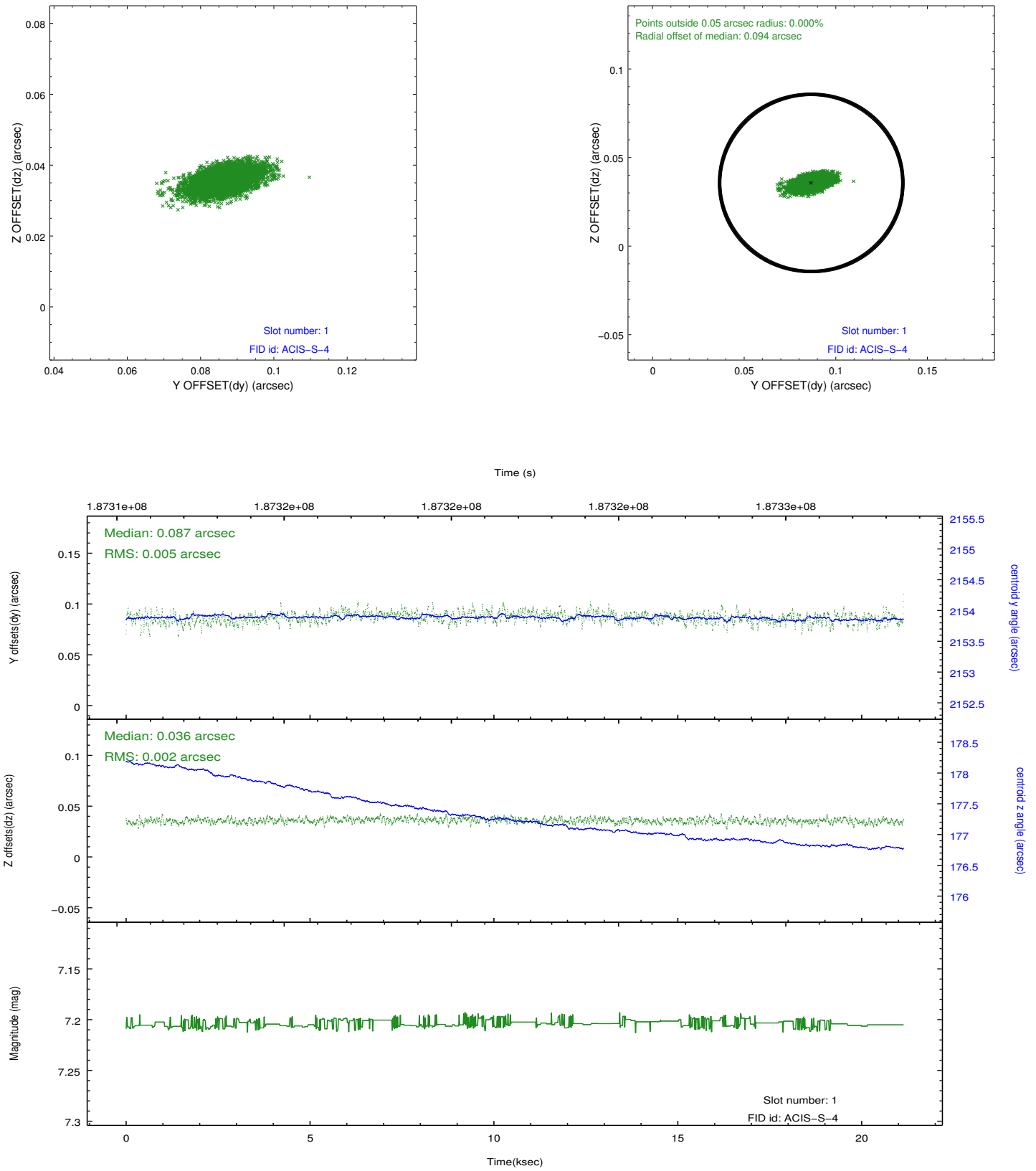


2.5 FID Slots

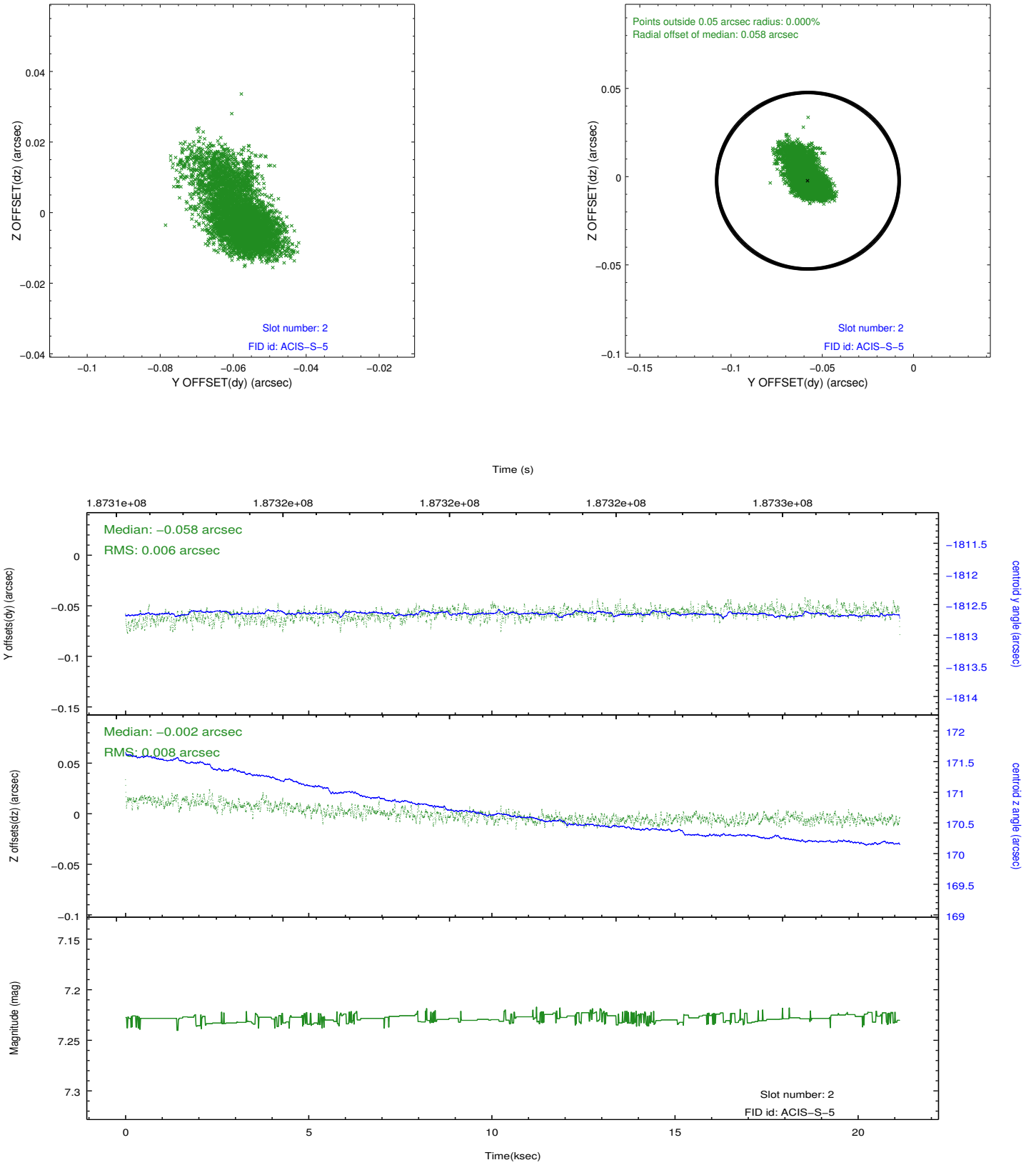
2.5.1 Slot 0



2.5.2 Slot 1



2.5.3 Slot 2



A Summary

A.1 Status

V&V Scientist	Jen Lauer
V&V Date (YYYY-MM-DD)	2012.12.02
V&V Edition	1
V&V Disposition and Status	OK
V&V Charge Time	21.126

A.2 Comments

Very bright, piled-up source next to target.