

# V&V Reference Report

## L2 ASCDS Version : 7.6.8

Observation 3844 - L2 Version 001  
Chandra X-Ray Center

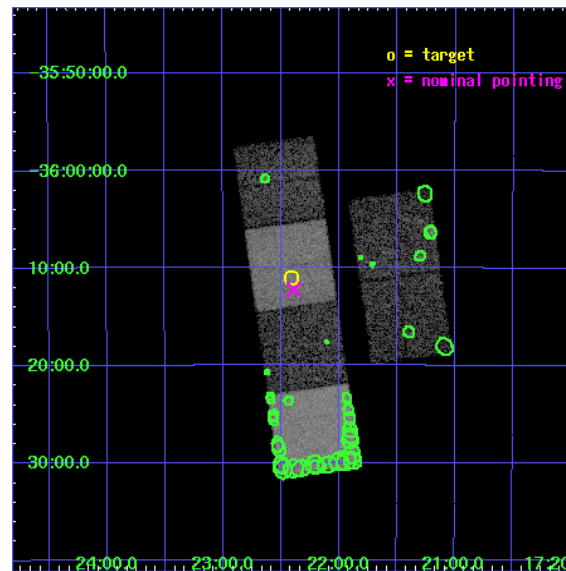
L2 Processing Date : Jul 1 2006

## Contents

<b>1</b>	<b>Front</b>	<b>2</b>
<b>2</b>	<b>OBI</b>	<b>3</b>
2.1	OBI . . . . .	3
2.1.1	Images . . . . .	3
2.1.2	Bias . . . . .	3
2.1.3	Parameters . . . . .	4
2.1.4	Events . . . . .	4
2.2	Compared Parameters . . . . .	5
2.3	Aspect . . . . .	6
2.4	Star Slots . . . . .	9
2.4.1	Slot 3 . . . . .	9
2.4.2	Slot 4 . . . . .	10
2.4.3	Slot 5 . . . . .	11
2.4.4	Slot 6 . . . . .	12
2.4.5	Slot 7 . . . . .	13
2.5	FID Slots . . . . .	14
2.5.1	Slot 0 . . . . .	14
2.5.2	Slot 1 . . . . .	15
2.5.3	Slot 2 . . . . .	16
<b>3</b>	<b>Point Sources</b>	<b>17</b>
<b>A</b>	<b>Summary</b>	<b>18</b>
A.1	Status . . . . .	18
A.2	Comments . . . . .	18

# 1 Front

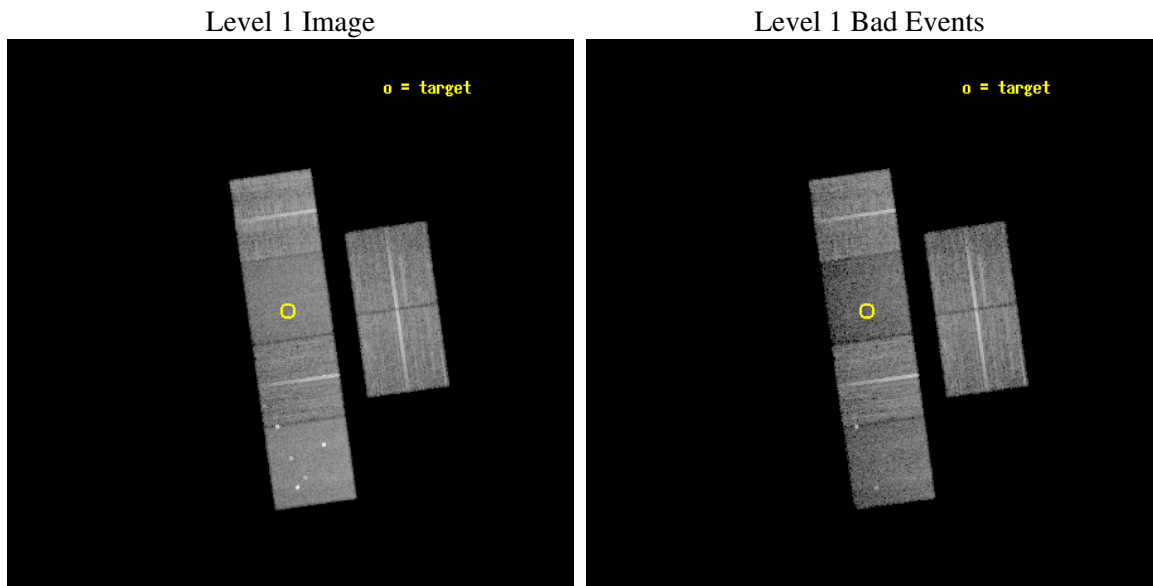
seq_num	500323
obs_id	3844
title	SUPERNOVA REMNANTS: HOMES FOR YOUNG NEUTRON STARS
observer	Prof. David Helfand
object	G351.2+0.1
dtcycle	0
cycle	P
ra_targ	260.602917
dec_targ	-36.183333
ra_nom	260.59725717445
dec_nom	-36.203575448532
roll_nom	261.94992415753
revision	2
ontime	14963.199944258
livetime	14773.726896806
ontime2	14959.958983988
ontime3	14963.199944258
ontime5	14963.199944258
ontime6	14963.199944258
ontime7	14963.199944258
ontime8	14963.199944258
l2events	106448



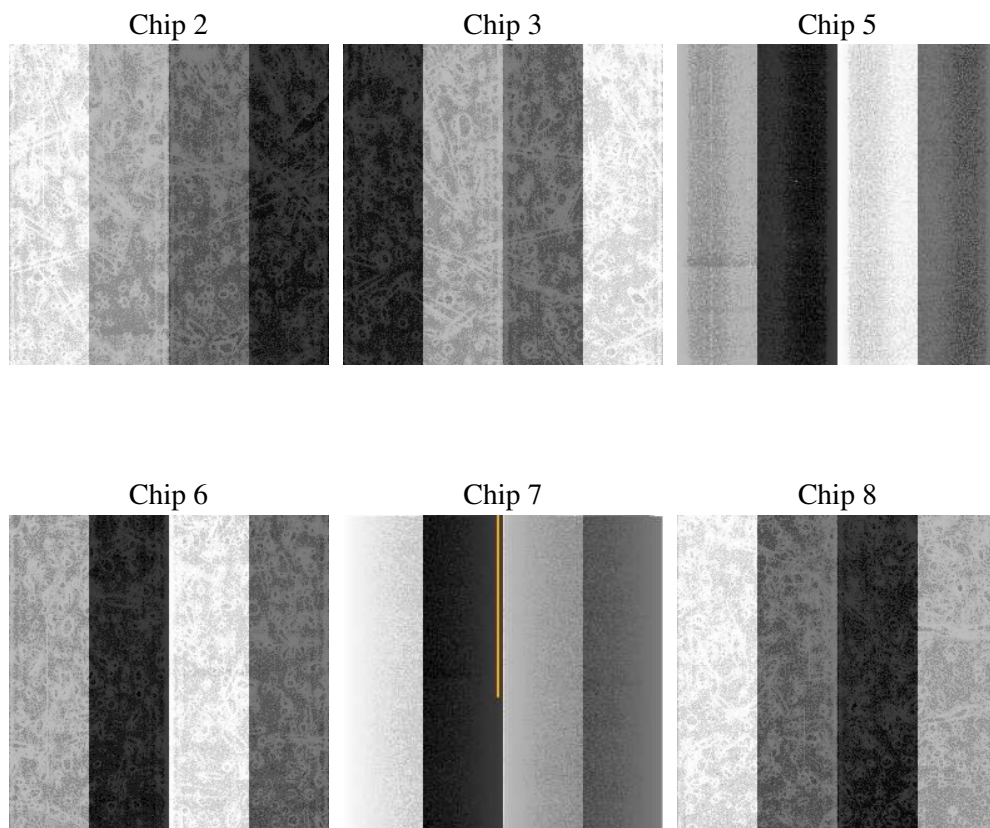
## 2 OBI

### 2.1 OBI

#### 2.1.1 Images



#### 2.1.2 Bias



### 2.1.3 Parameters

obi_num	0
ascdsver	7.6.8
caldbver	3.2.2
date	2006-07-01T16:47:28
revision	2

sched_exp_time	15000.000000
ontime	14966.940542996
ontime2	14963.699562788
ontime3	14966.940523058
ontime5	14966.940523058
ontime6	14966.940523058
ontime7	14966.940542996
ontime8	14966.940523058
l1events	506503

### 2.1.4 Events

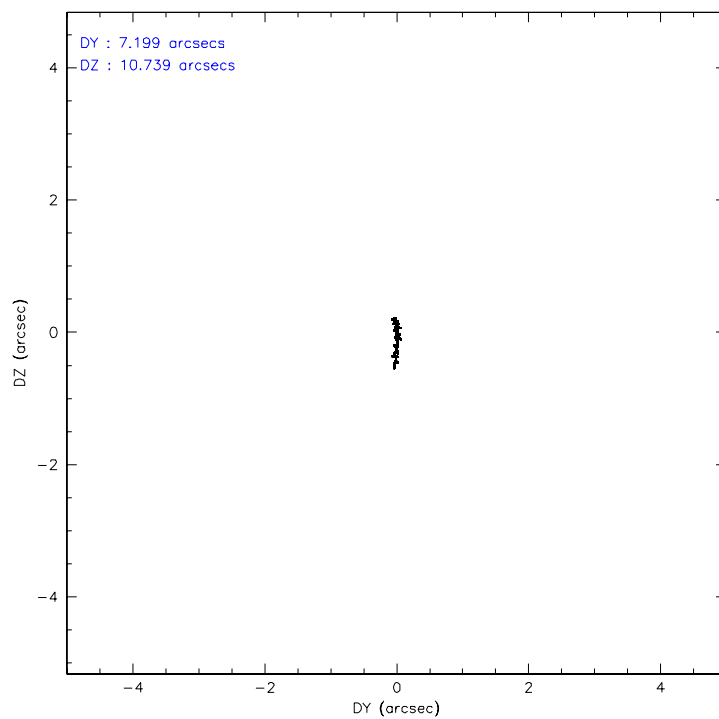
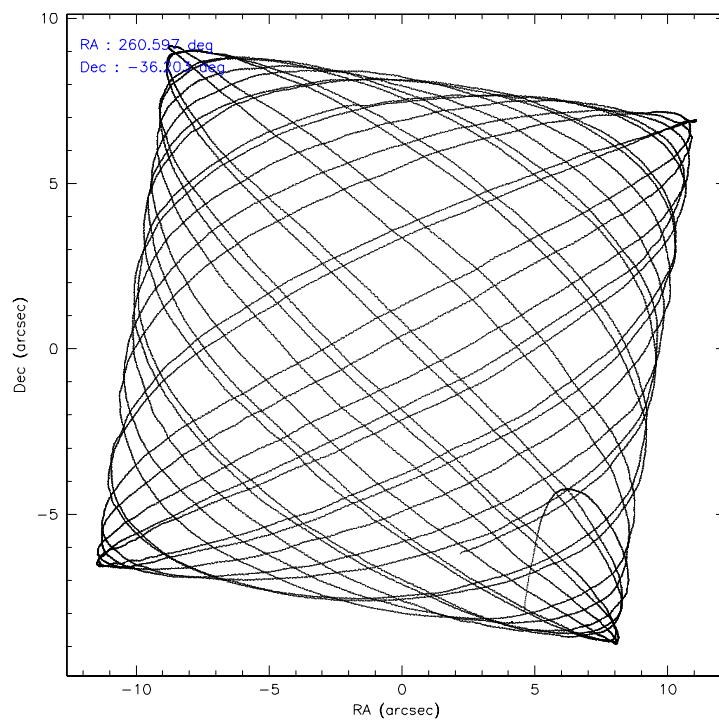
	ccd 2	ccd 3	ccd 5	ccd 6	ccd 7	ccd 8
level 1 events	84041	74757	97754	78425	72325	99201
rejected events	76208	66724	45915	69413	38788	75539
rejected %	90%	89%	46%	88%	53%	76%

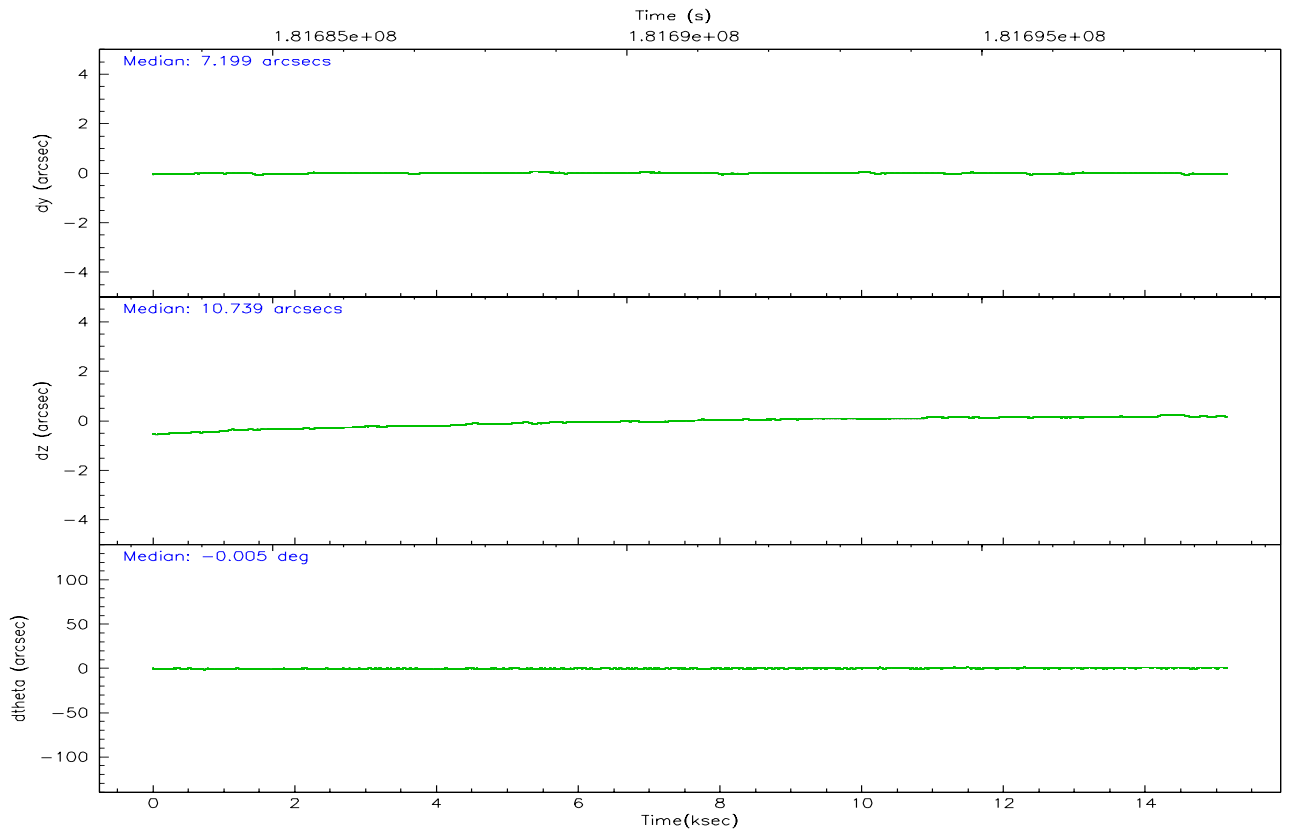
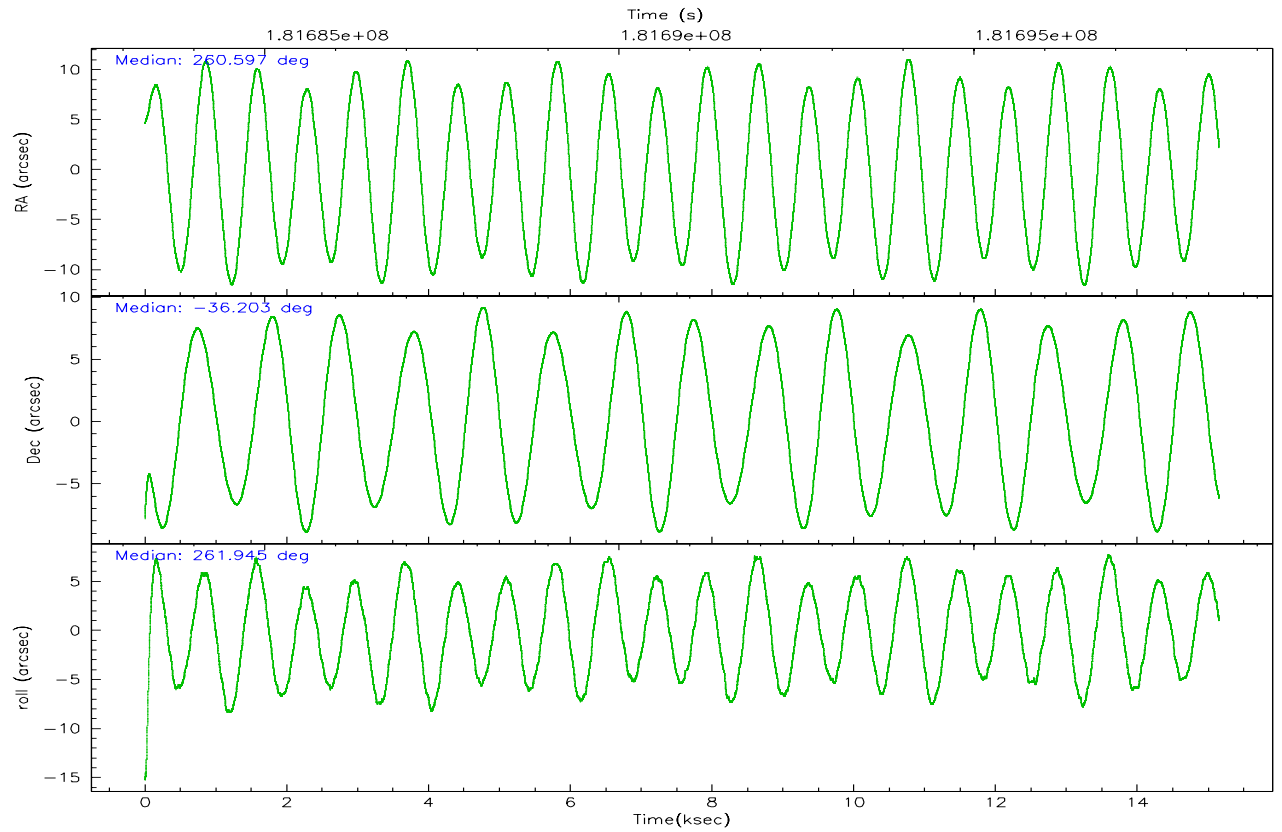
	ccd 2	ccd 3	ccd 5	ccd 6	ccd 7	ccd 8
grade 0 events	3076	3318	6711	3875	2219	6708
	3%	4%	6%	4%	3%	6%
grade 1 events	64	52	624	44	69	68
	0%	0%	0%	0%	0%	0%
grade 2 events	1768	1520	16090	1742	8576	5209
	2%	2%	16%	2%	11%	5%
grade 3 events	840	873	1364	903	2199	2646
	0%	1%	1%	1%	3%	2%
grade 4 events	872	862	1409	940	2121	2512
	1%	1%	1%	1%	2%	2%
grade 5 events	2156	2450	5338	2609	5714	3953
	2%	3%	5%	3%	7%	3%
grade 6 events	1278	1460	26275	1554	18433	6590
	1%	1%	26%	1%	25%	6%
grade 7 events	73987	64222	39943	66758	32994	71515
	88%	85%	40%	85%	45%	72%

## 2.2 Compared Parameters

Parameter	Planned	Actual	Parameter	Planned	Actual
Instrument	ACIS	ACIS	Obspar format version number	6	6
Detector	ACIS-235678	ACIS-235678	Obspar file type	PREDICTED	ACTUAL
Grating	NONE	NONE	Obspar update status	NONE	UPDATED
Data mode	VFAINT	VFAINT	On-chip summing requested	N	N
Observation mode	POINTING	POINTING	Subarray requested	NONE	NONE
Pointing RA	260.584178	260.597257174445	Alternating exposures requested	N	N
Pointing Dec	-36.178453	-36.20357544853207	Primary exposure time	0.000000	3.2
Pointing Roll	261.785589	261.9499241575272			
SIM focus pos (mm)	-0.684267	-0.6828225247311905			
SIM defocus (mm)	0	0.001444936568705701			
SIM translation stage pos (mm)	-190.132523	-190.1400660498719			
SIM translation stage offset (mm)	0	0.00754346686406393			
Observation start time	181683468.184000	181682505.78075			
Observation start date	2003-10-04T19:36:44	2003-10-04T19:21:45			
Observation end time	181698468.184000	181699415.20648			
Observation end date	2003-10-04T23:46:44	2003-10-05T00:03:35			
Read mode	TIMED	TIMED			

## 2.3 Aspect





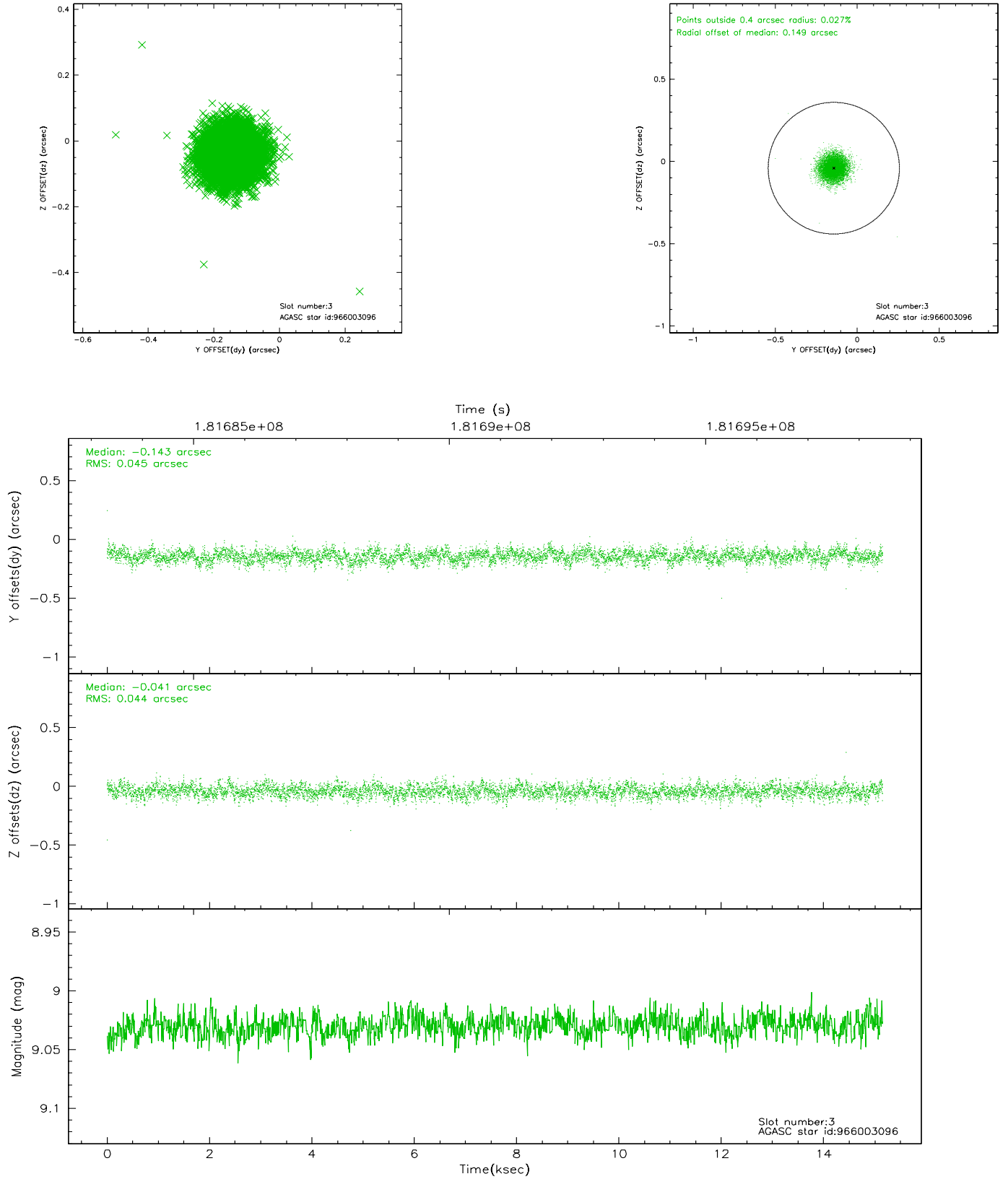
### Slot Statistics

slot	status	id	mag	n_pts	med_dy	med_dz	dr1	dr2	ra	dec	mean_y	mean_z
0	FID	ACIS-S-2	7.10	3697	-0.029	0.023	0.008	0.012	0.000000	0.000000	-759.95	-1731.94
1	FID	ACIS-S-4	7.20	3695	0.008	0.008	0.006	0.011	0.000000	0.000000	2153.20	176.27
2	FID	ACIS-S-5	7.23	3697	-0.011	-0.022	0.007	0.011	0.000000	0.000000	-1812.42	170.18
3	GUIDE	966003096	9.03	7390	-0.143	-0.041	0.067	0.107	260.360642	-35.600982	-1963.11	-944.71
4	GUIDE	966530176	8.78	7393	0.144	0.025	0.065	0.104	260.167913	-36.682742	1971.35	-929.62
5	GUIDE	966530504	9.03	7393	0.023	-0.066	0.069	0.111	260.219400	-36.072372	-223.67	-1104.97
6	GUIDE	966530544	8.76	7320	0.152	-0.098	0.070	0.115	260.631187	-36.513761	1175.75	306.92
7	GUIDE	968236152	9.64	7390	-0.175	0.181	0.099	0.161	261.153683	-35.838826	-1442.63	1471.18

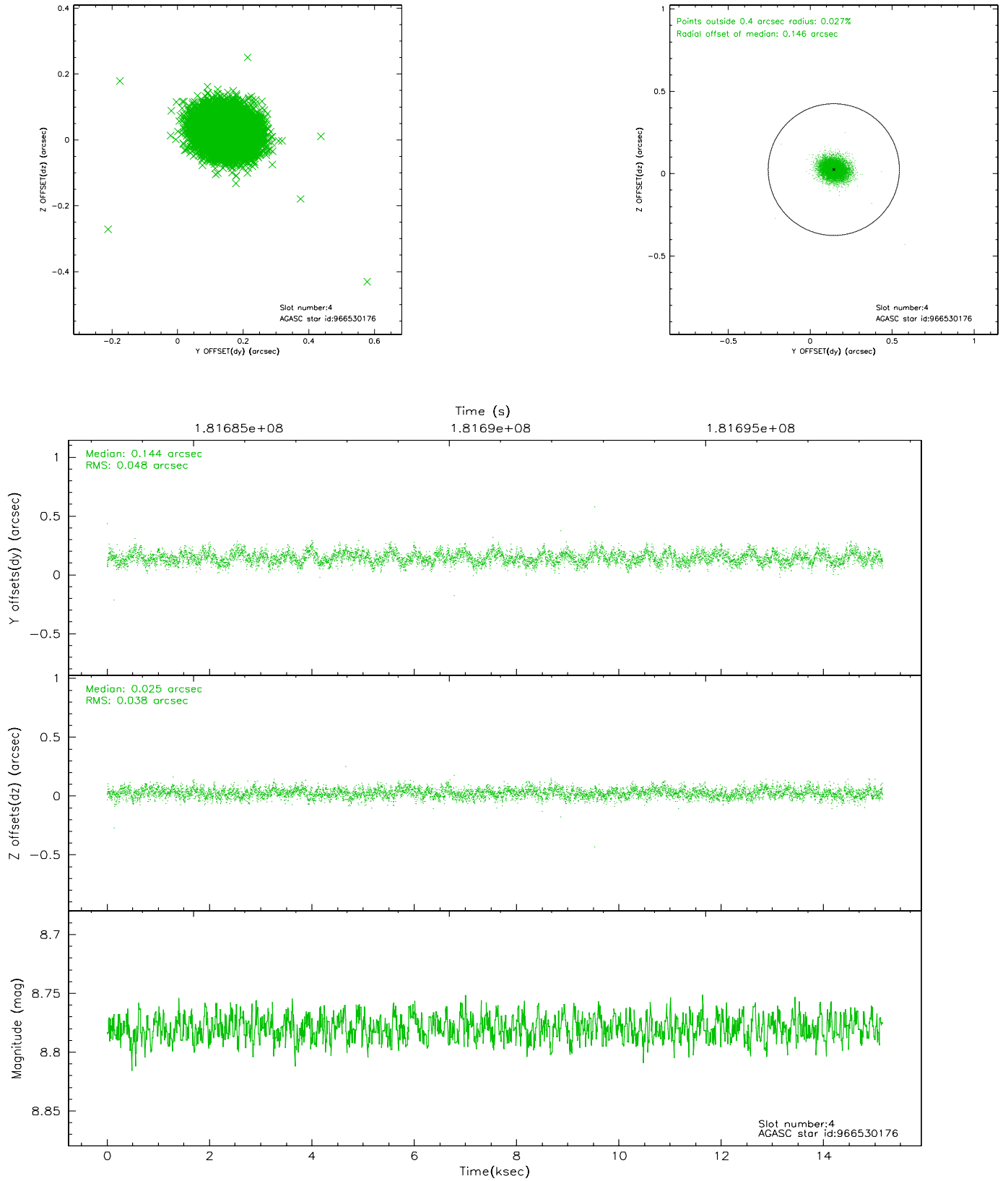


## 2.4 Star Slots

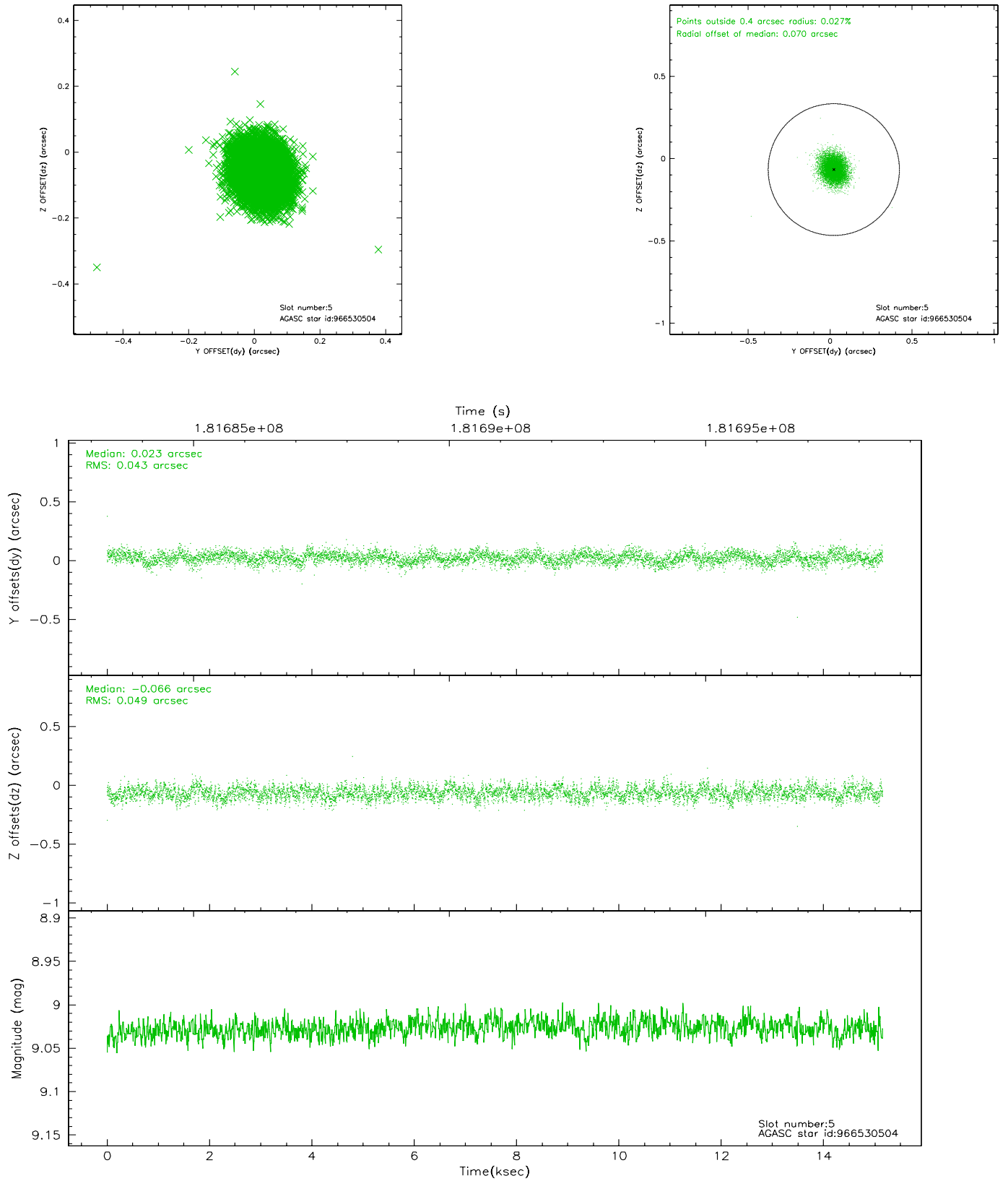
### 2.4.1 Slot 3



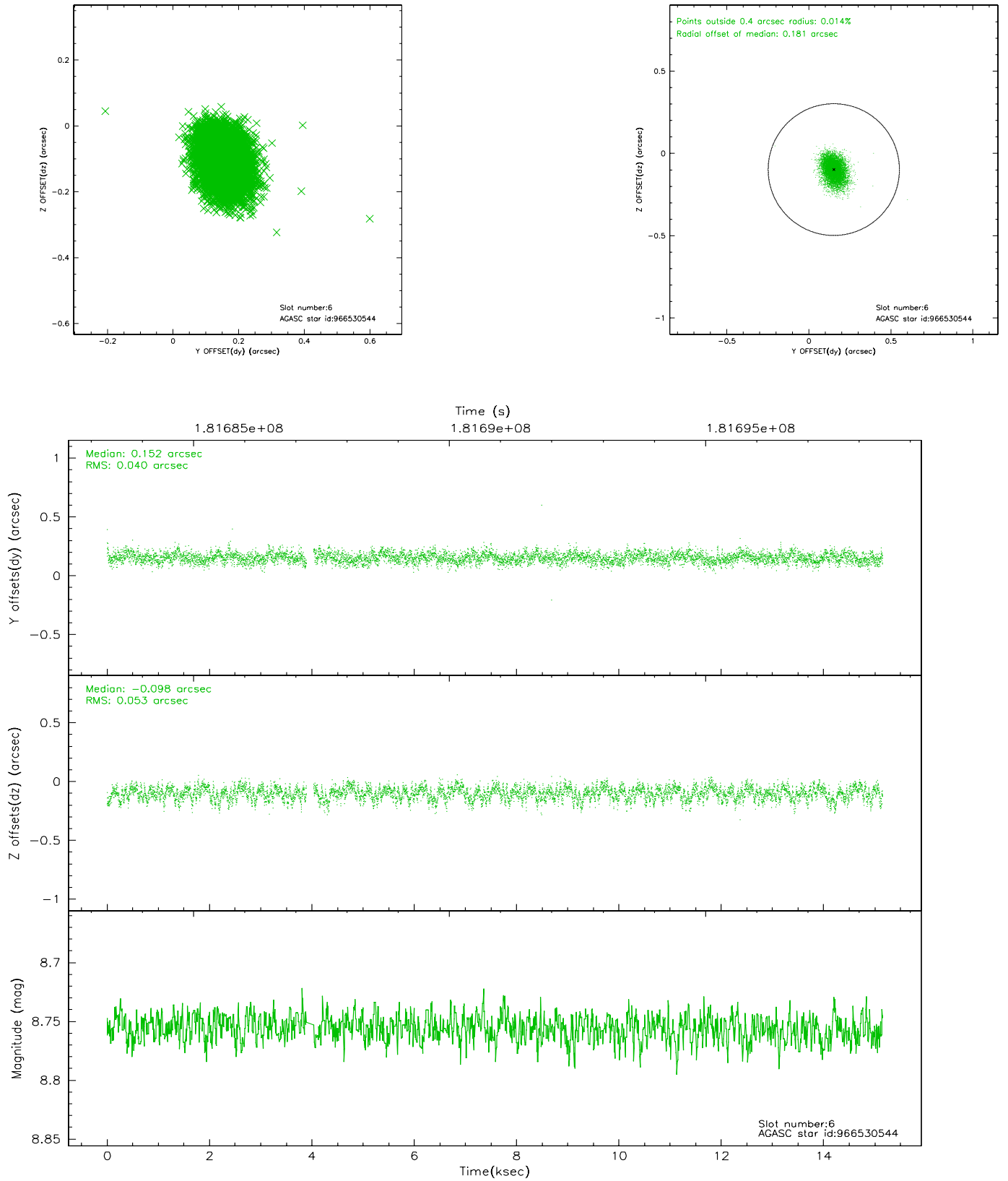
## 2.4.2 Slot 4



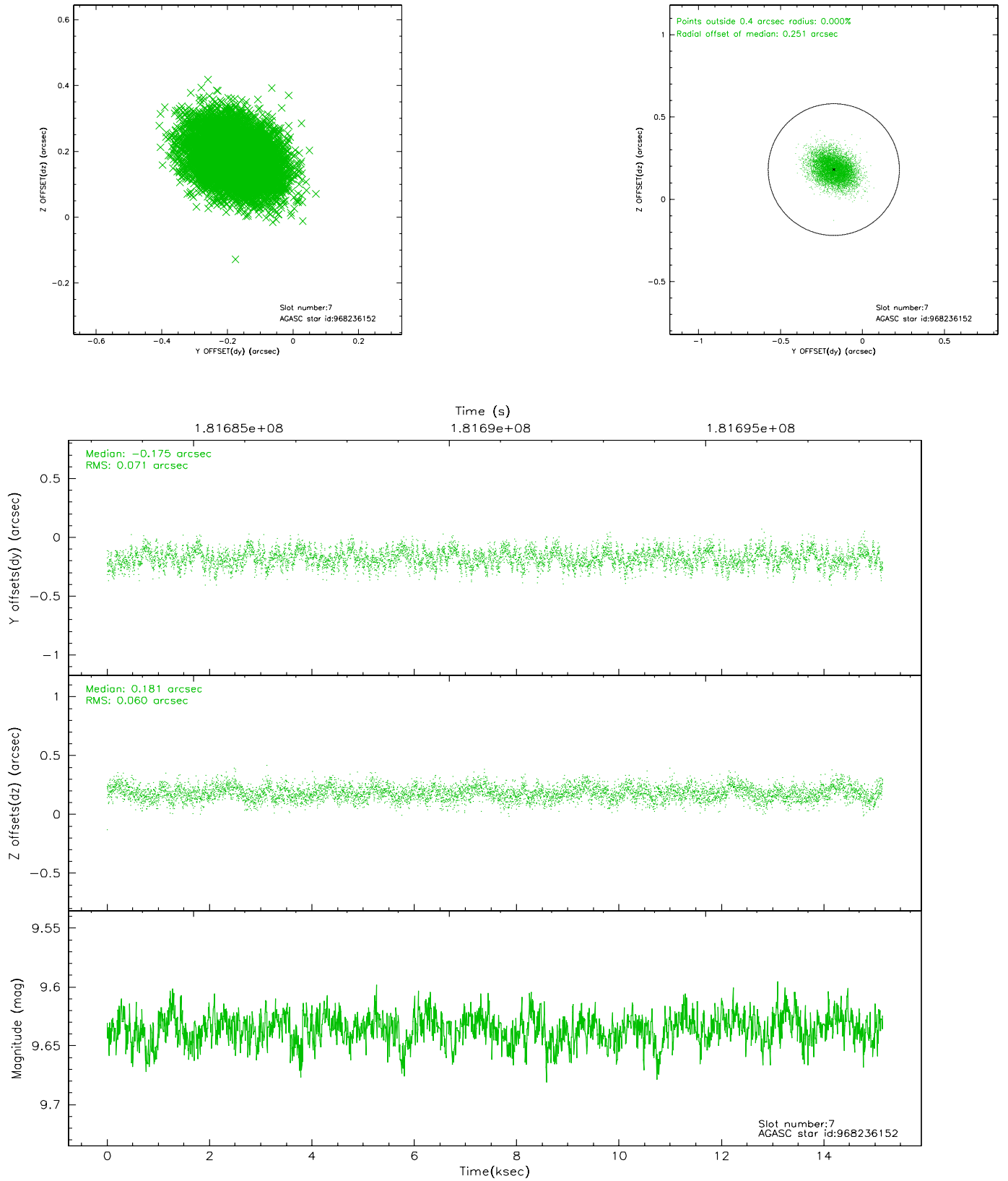
### 2.4.3 Slot 5



## 2.4.4 Slot 6

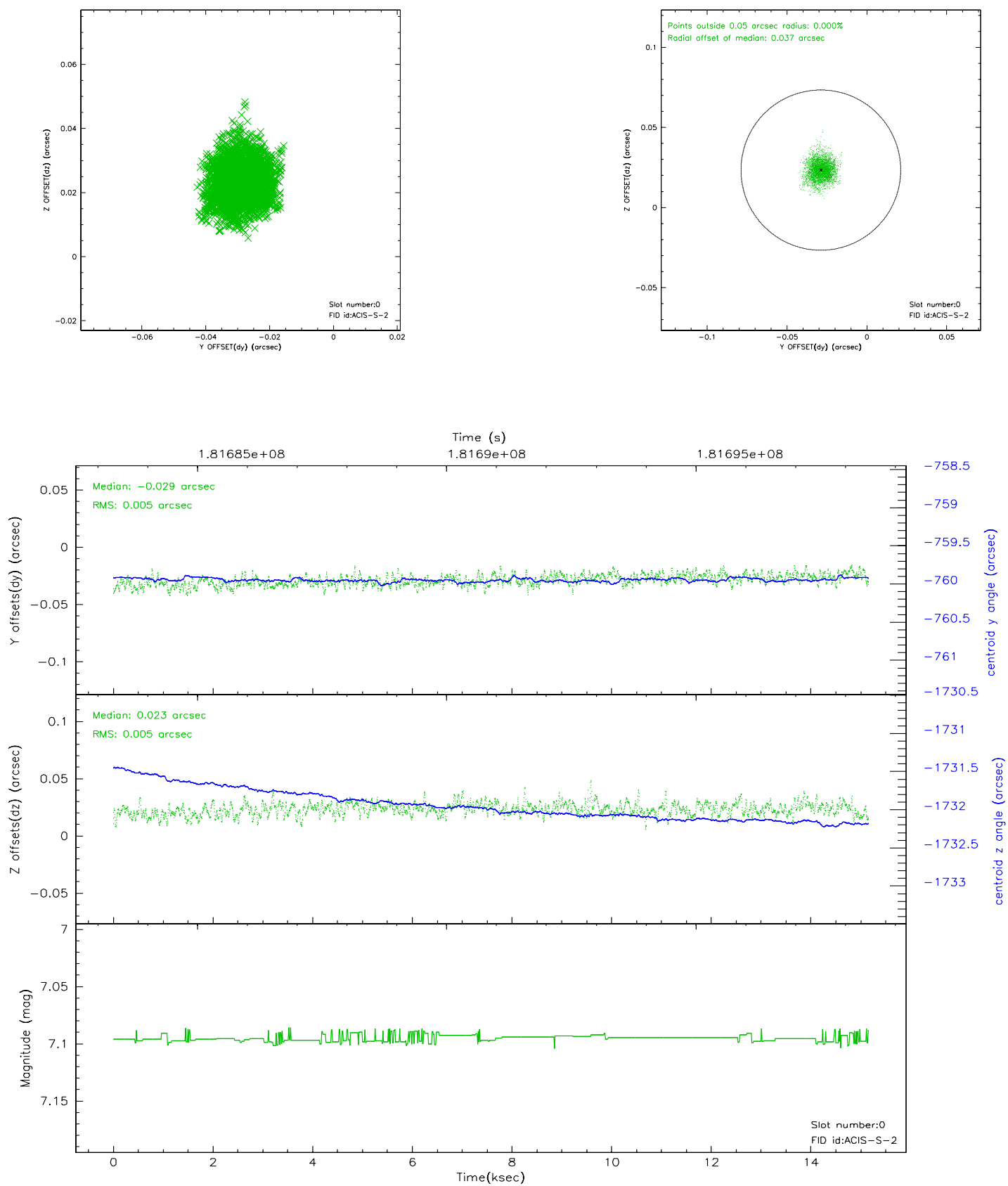


## 2.4.5 Slot 7

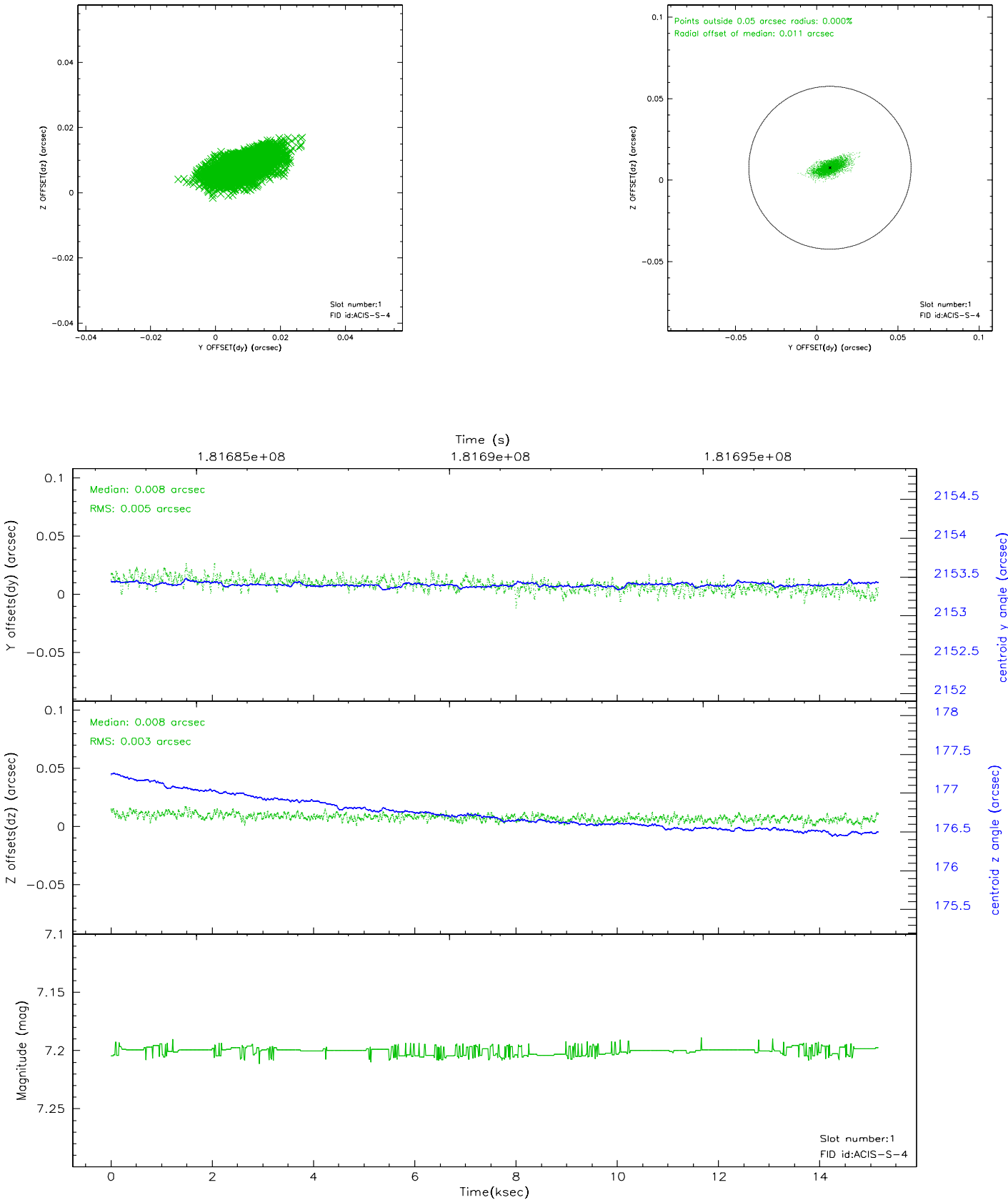


## 2.5 FID Slots

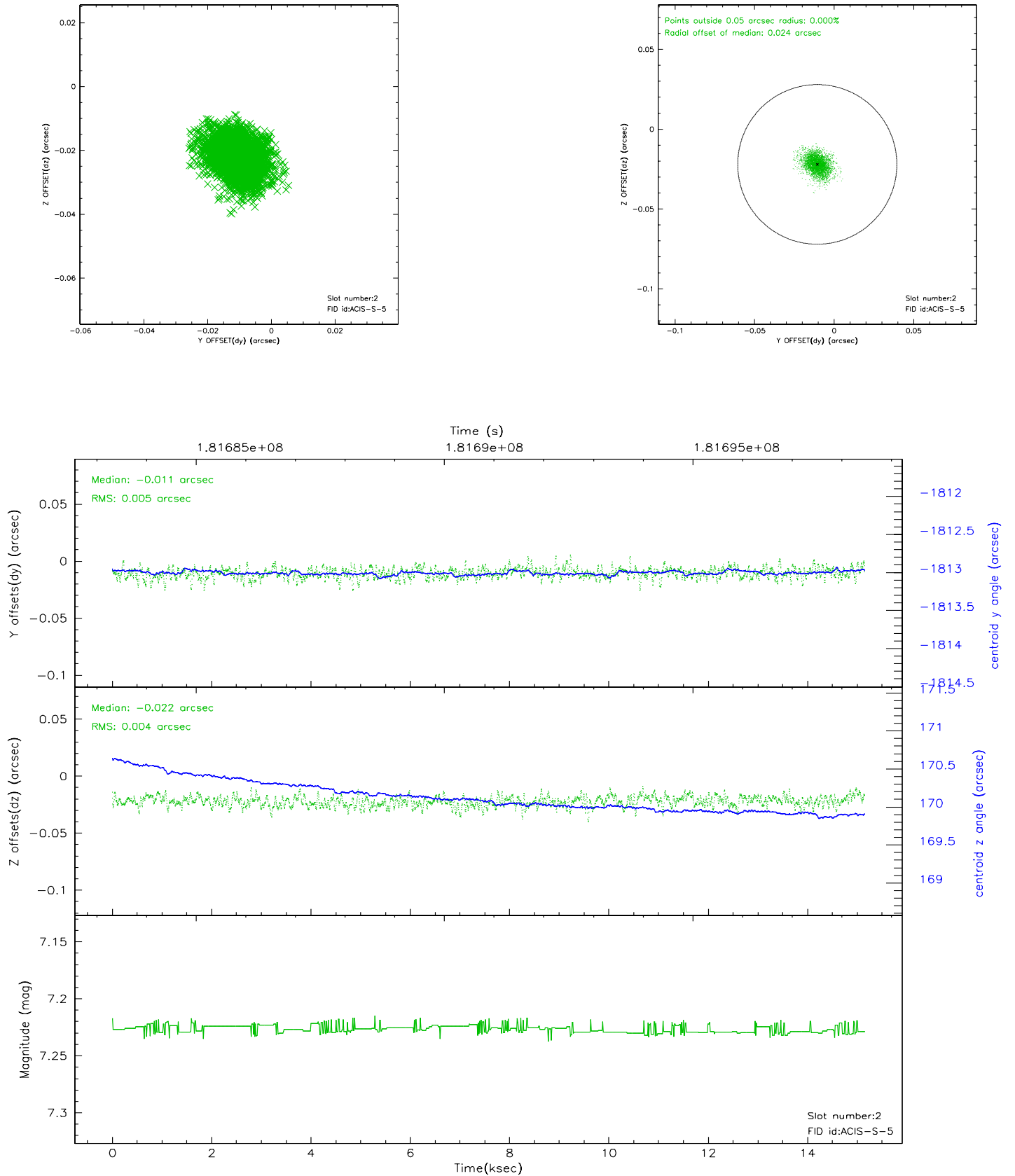
### 2.5.1 Slot 0



2.5.2 Slot 1

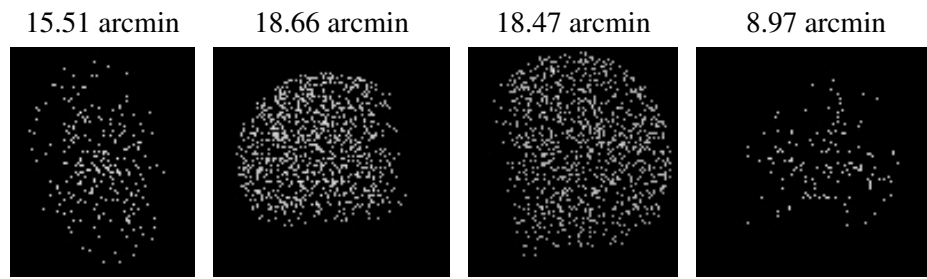


### 2.5.3 Slot 2





### 3 Point Sources



## A Summary

### A.1 Status

V&V Scientist	Beth Sundheim
V&V Date (YYYY-MM-DD)	2006.07.03
V&V Edition	1
V&V Disposition and Status	OK
V&V Charge Time	14.963

### A.2 Comments