

V&V Reference Report

L2 ASCDS Version : 8.4.5

Observation 3833 - L2 Version 6
Chandra X-Ray Center

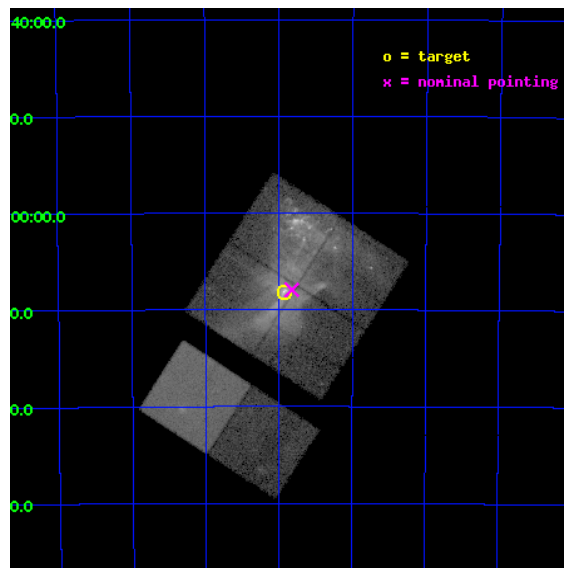
L2 Processing Date : Jan 22 2013

Contents

1	Front	2
2	OBI	3
2.1	OBI	3
2.1.1	Images	3
2.1.2	Bias	3
2.1.3	Parameters	4
2.1.4	Events	4
2.2	Compared Parameters	5
2.3	Aspect	6
2.4	Star Slots	9
2.4.1	Slot 3	9
2.4.2	Slot 4	10
2.4.3	Slot 5	11
2.4.4	Slot 6	12
2.4.5	Slot 7	13
2.5	FID Slots	14
2.5.1	Slot 0	14
2.5.2	Slot 1	15
A	Summary	16
A.1	Status	16
A.2	Comments	16

1 Front

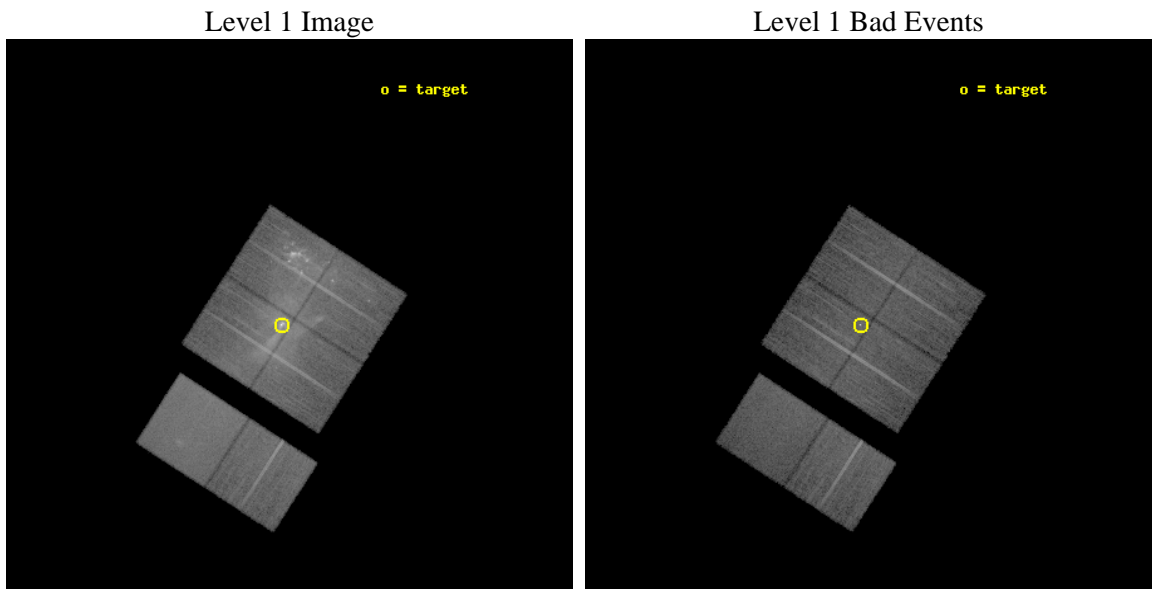
seq_num	500312	Sequence number
obs_id	3833	Observation id
title	MULTI-EPOCH OBSERVATIONS OF PSR B1509-58 AND ITS NEBULA	Proposal t
observer	Prof. Bryan Gaensler	Principal investigator
object	PSR B1509-58	Source name
dtcycle	0	
cycle	P	events from which exps? Prim/Second/Both
ra_targ	228.481667	Observer's specified target RA [deg]
dec_targ	-59.135889	Observer's specified target Dec [deg]
ra_nom	228.45575372362	Nominal RA [deg]
dec_nom	-59.132395835035	Nominal Dec [deg]
roll_nom	212.87532998818	Nominal Roll [deg]
revision	6	Processing version of data
ontime	19379.199927807	Sum of GTIs [s]
livetime	19133.808829568	Livetime [s]
ontime0	19379.199927807	Sum of GTIs [s]
ontime1	19379.199927807	Sum of GTIs [s]
ontime2	19379.199927807	Sum of GTIs [s]
ontime3	19379.199927807	Sum of GTIs [s]
ontime6	19379.199927807	Sum of GTIs [s]
ontime7	19379.199927807	Sum of GTIs [s]
l2events	341489	Number of level 2 events



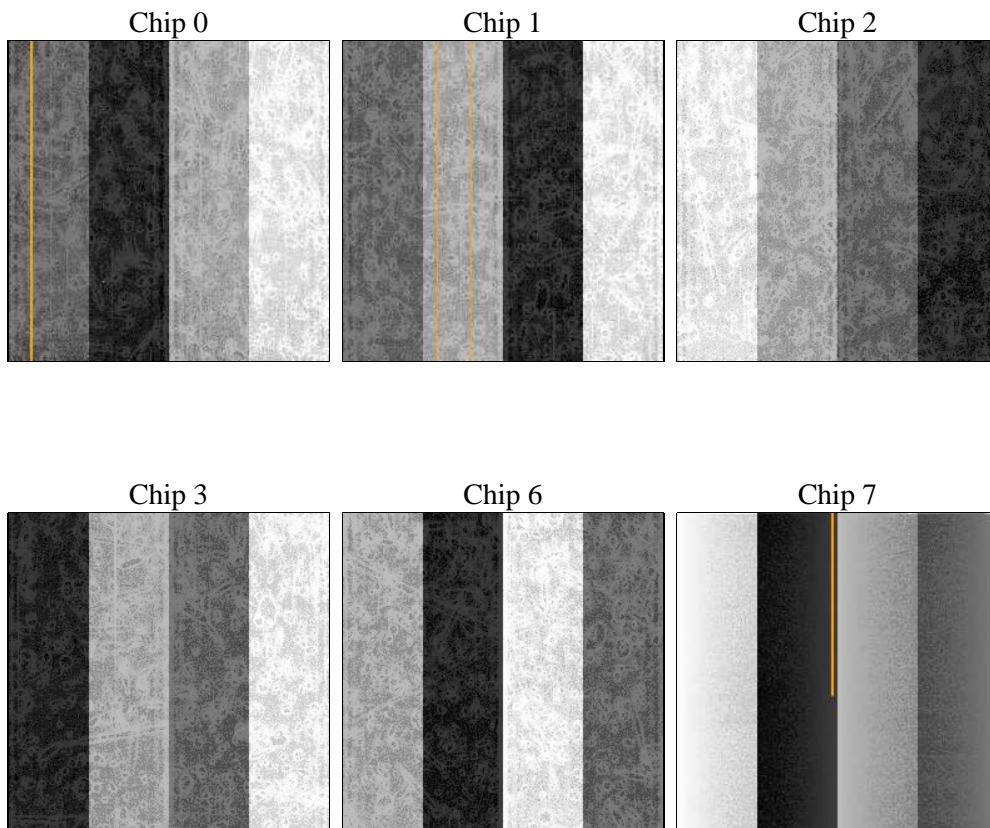
2 OBI

2.1 OBI

2.1.1 Images



2.1.2 Bias



2.1.3 Parameters

obi_num	0	Obi number	sched_exp_time	19250.000000	[s] Scheduled observation exposure time
ascdsver	8.5.1.1	Processing system revision	ontime	19379.199927807	Sum of GTIs [s]
caldsver	4.5.5	 	ontime0	19379.199927807	Sum of GTIs [s]
date	2013-01-22T20:40:02	Date and time of file creation	ontime1	19379.199927807	Sum of GTIs [s]
revision	6	Processing version of data	ontime2	19379.199927807	Sum of GTIs [s]
			ontime3	19379.199927807	Sum of GTIs [s]
			ontime6	19379.199927807	Sum of GTIs [s]
			ontime7	19379.199927807	Sum of GTIs [s]
			l1events	1023853	Number of level 1 events

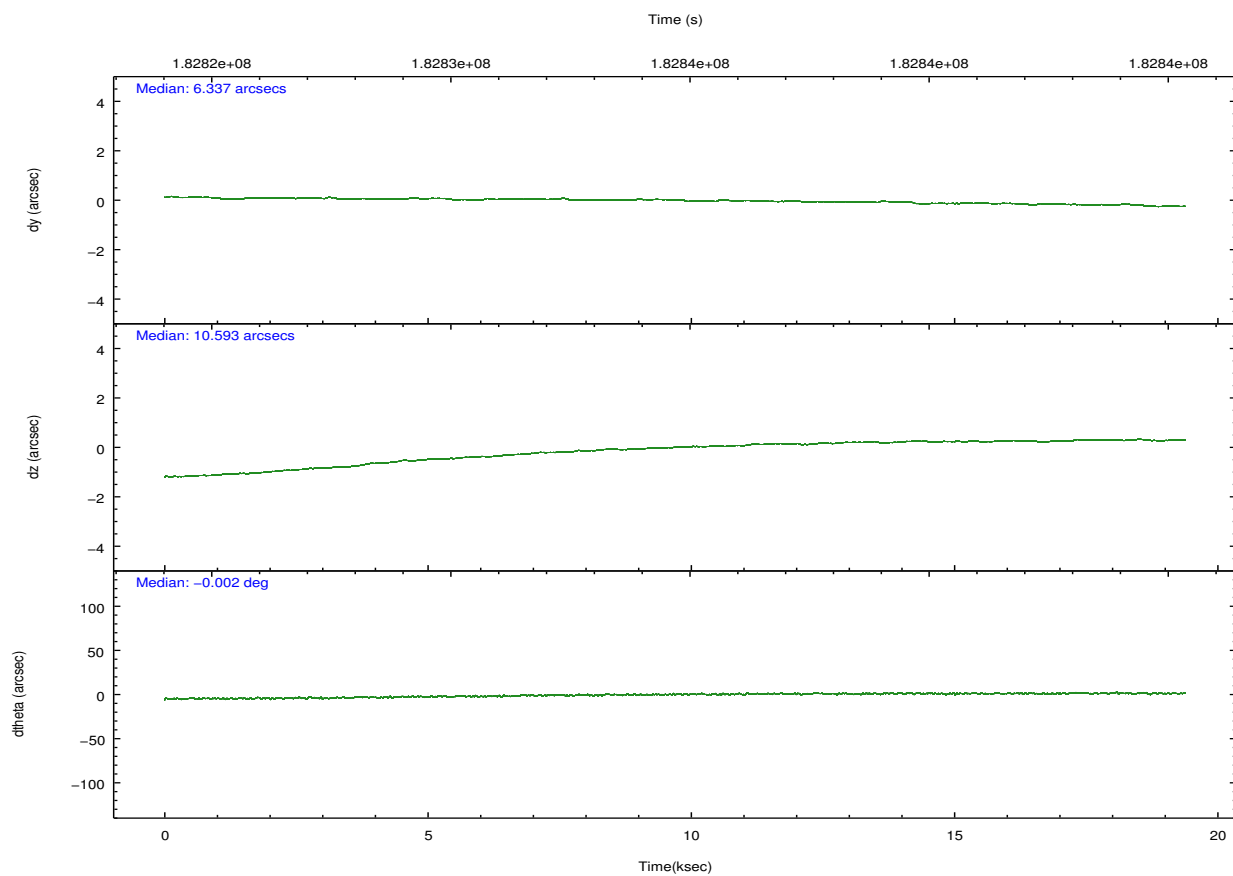
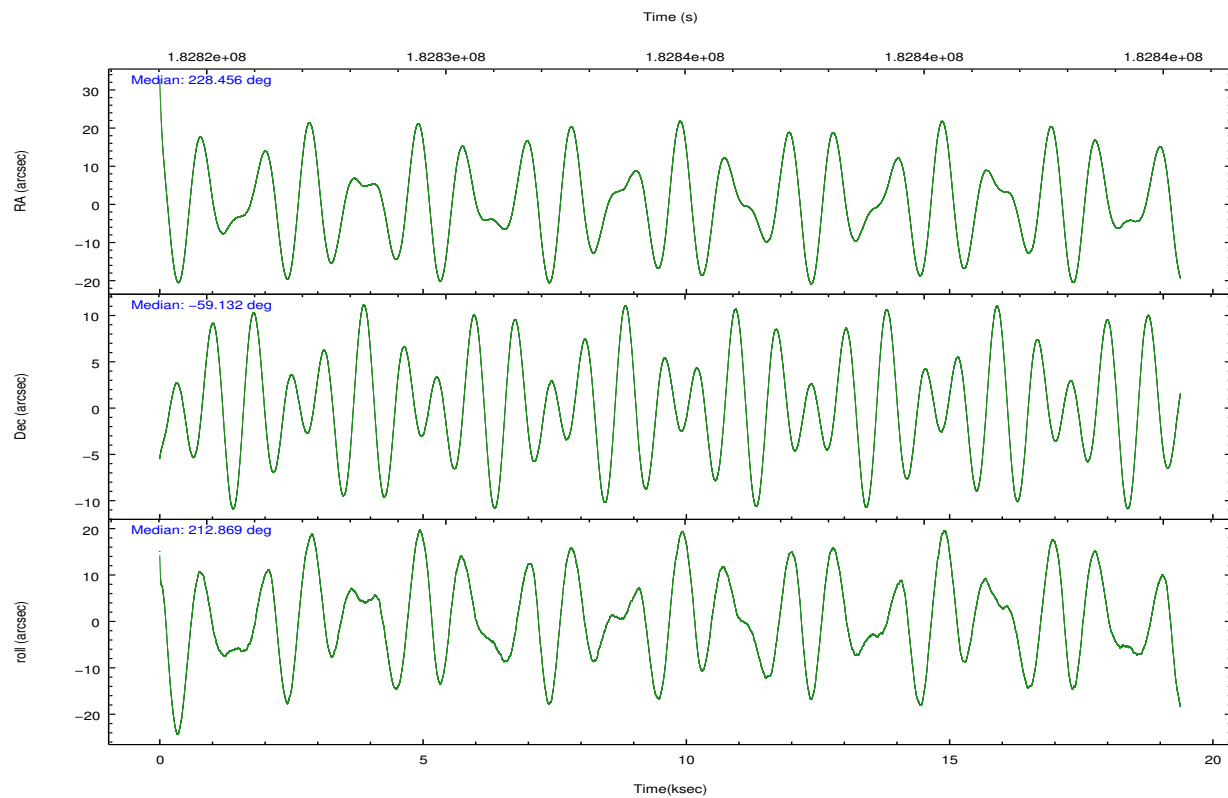
2.1.4 Events

	ccd 0	ccd 1	ccd 2	ccd 3	ccd 6	ccd 7		ccd 0	ccd 1	ccd 2	ccd 3	ccd 6	ccd 7
level 1 events	148035	196805	153847	197729	139269	188168	grade 0 events	29749	69662	28524	58980	9033	9852
rejected events	104244	104079	111649	114023	120673	104910		20%	35%	18%	29%	6%	5%
rejected %	70%	52%	72%	57%	86%	55%	grade 1 events	168	310	192	1015	82	173
								0%	0%	0%	0%	0%	0%
							grade 2 events	6259	11323	5916	10937	3601	17565
								4%	5%	3%	5%	2%	9%
							grade 3 events	2525	3934	2356	4317	1581	7840
								1%	1%	1%	2%	1%	4%
							grade 4 events	2357	3769	2458	4176	1517	7874
								1%	1%	1%	2%	1%	4%
							grade 5 events	5217	5421	4966	6858	5981	16697
								3%	2%	3%	3%	4%	8%
							grade 6 events	3463	4857	3455	5984	3224	42421
								2%	2%	2%	3%	2%	22%
							grade 7 events	98297	97529	105980	105462	114250	85746
								66%	49%	68%	53%	82%	45%

2.2 Compared Parameters

Parameter	Planned	Actual	Parameter	Planned	Actual
Instrument	ACIS	ACIS	Obspar format version number	7	7
Detector	ACIS-012367	ACIS-012367	Obspar file type	PREDICTED	ACTUAL
Grating	NONE	NONE	Obspar update status	NONE	UPDATED
Data mode	FAINT	FAINT	Number of optional ACIS chips dropped	0	0
Observation mode	POINTING	POINTING	On-chip summing requested	N	N
[deg] Pointing RA	228.479919	228.4557537236167	Subarray requested	NONE	NONE
[deg] Pointing Dec	-59.107949	-59.13239583503491	Alternating exposures requested	N	N
[deg] Pointing Roll	212.687398	212.8753299881752	[s] Primary exposure time	0.000000	3.2
[mm] SIM focus pos	-0.782348	-0.7809083437167272			
[mm] SIM defocus	0	0.001439871863259334			
[mm] SIM translation stage pos	-233.592463	-233.5874344608287			
[mm] SIM translation stage offset	0	-0.005018542100998502			
[s] Observation start time (MET)	182825127.184000	182823851.01733			
Observation start date	2003-10-18T00:44:23	2003-10-18T00:24:11			
[s] Observation end time (MET)	182844377.184000	182845291.45575			
Observation end date	2003-10-18T06:05:13	2003-10-18T06:21:31			
Read mode	TIMED	TIMED			

2.3 Aspect

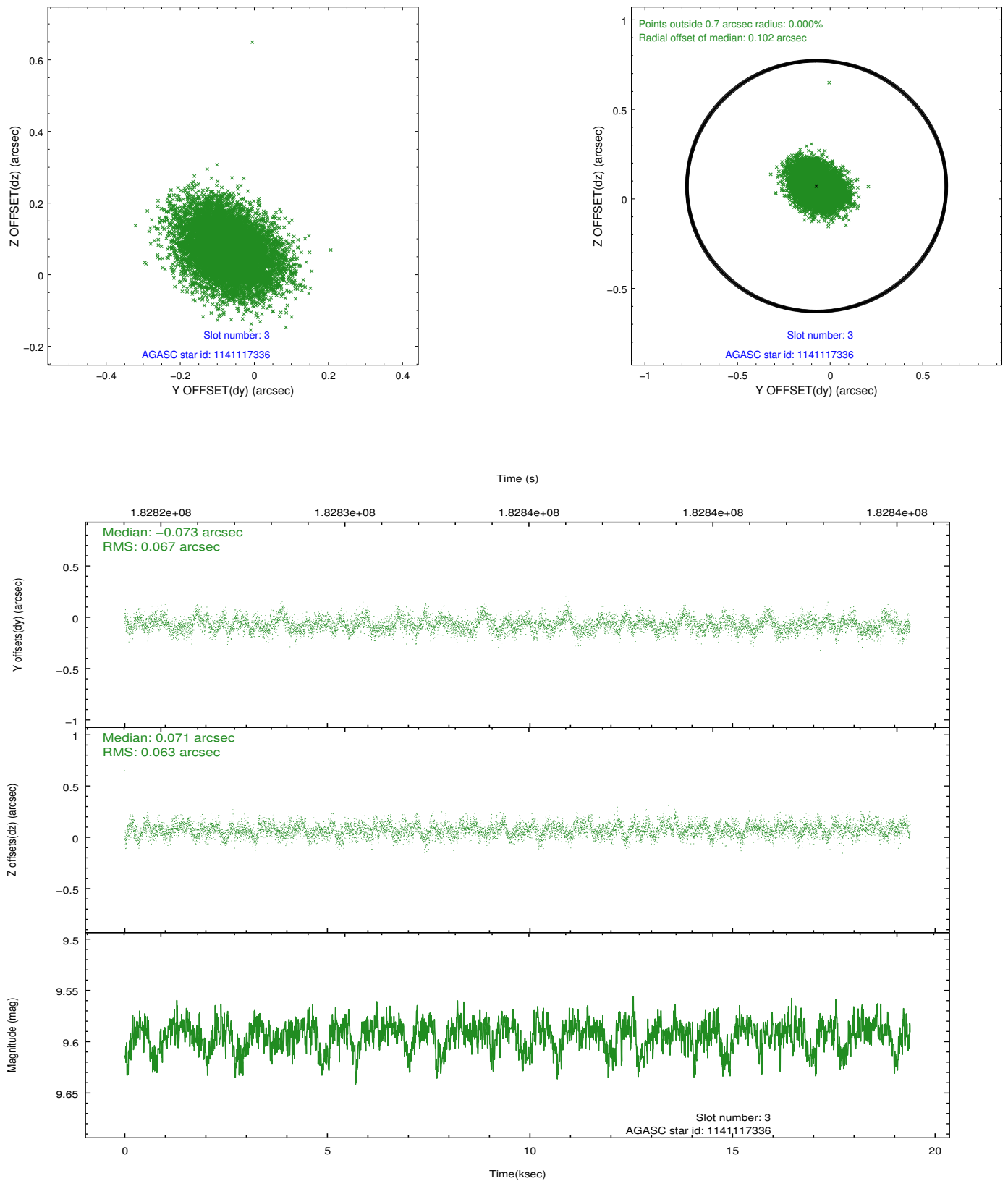


Slot Statistics

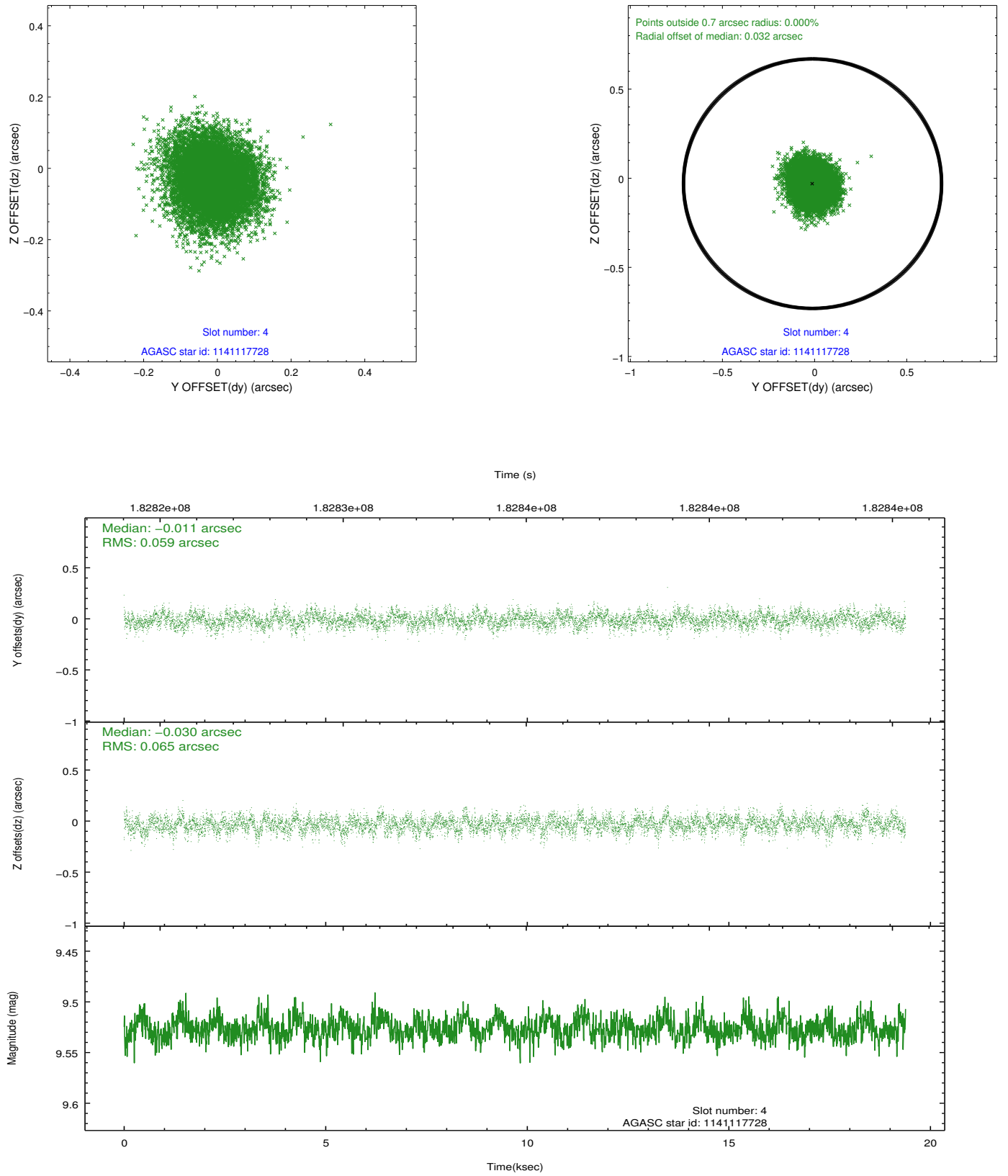
slot	status	id	mag	n_pts	med_dy	med_dz	dr1	dr2	ra	dec	mean_y	mean_z
0	FID	ACIS-I-1	7.24	4729	0.040	-0.023	0.011	0.027	0.000000	0.000000	933.43	-833.91
1	FID	ACIS-I-5	7.23	4728	-0.101	0.073	0.011	0.027	0.000000	0.000000	-1814.71	1063.55
2	OMITTED		0.00	0	0.000	0.000	0.000	0.000	0.000000	0.000000	0.00	0.00
3	GUIDE	1141117336	9.59	9436	-0.073	0.071	0.097	0.158	227.285487	-59.036996	1734.78	-1392.73
4	GUIDE	1141117728	9.53	9456	-0.011	-0.030	0.093	0.152	228.608878	-58.618268	-1154.93	-1353.17
5	GUIDE	1141119896	8.39	9449	-0.037	0.046	0.064	0.102	229.637327	-59.405643	-1196.29	2062.58
6	GUIDE	1141118720	9.47	9455	0.098	-0.011	0.097	0.158	227.772709	-59.614232	2071.89	844.75
7	GUIDE	1141116384	9.43	9456	0.022	-0.073	0.084	0.137	229.578291	-59.437206	-1042.86	2097.33

2.4 Star Slots

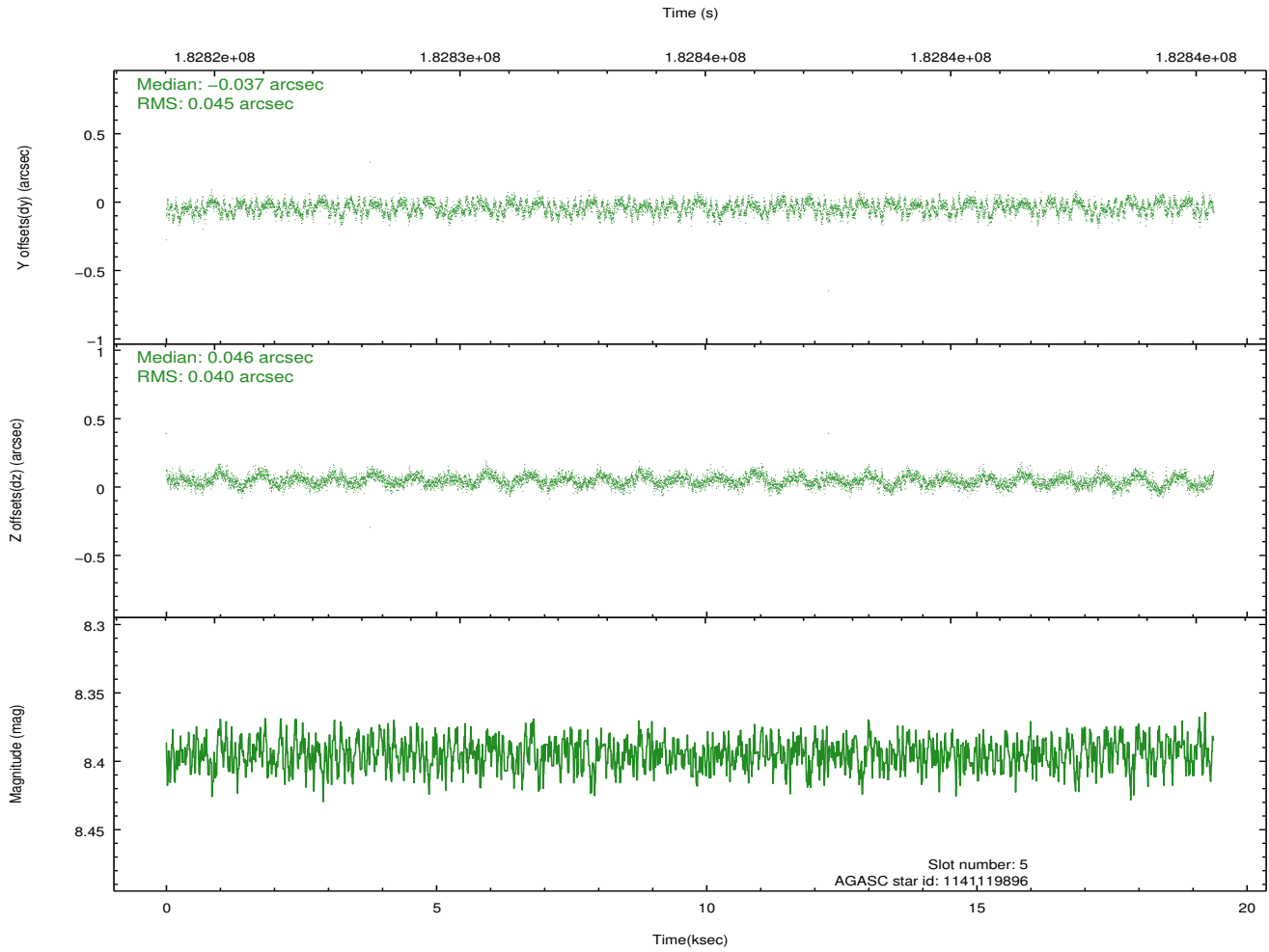
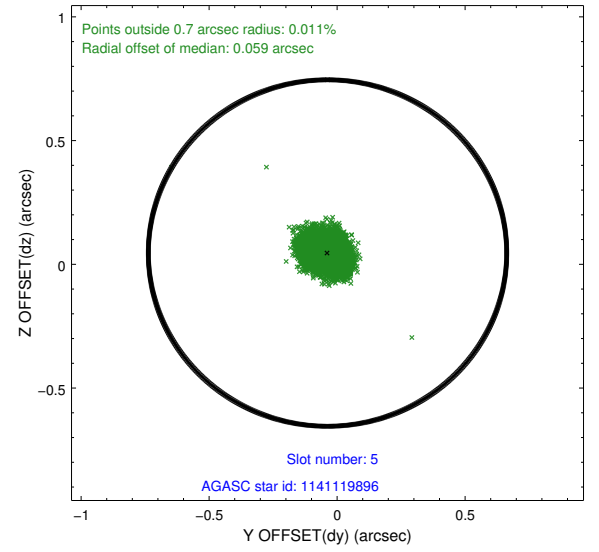
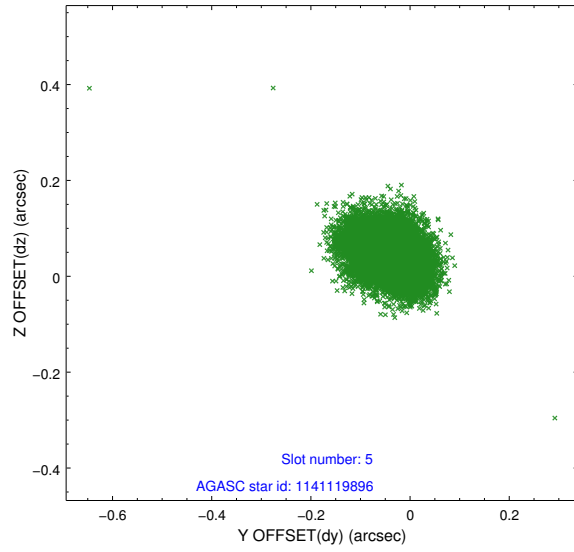
2.4.1 Slot 3



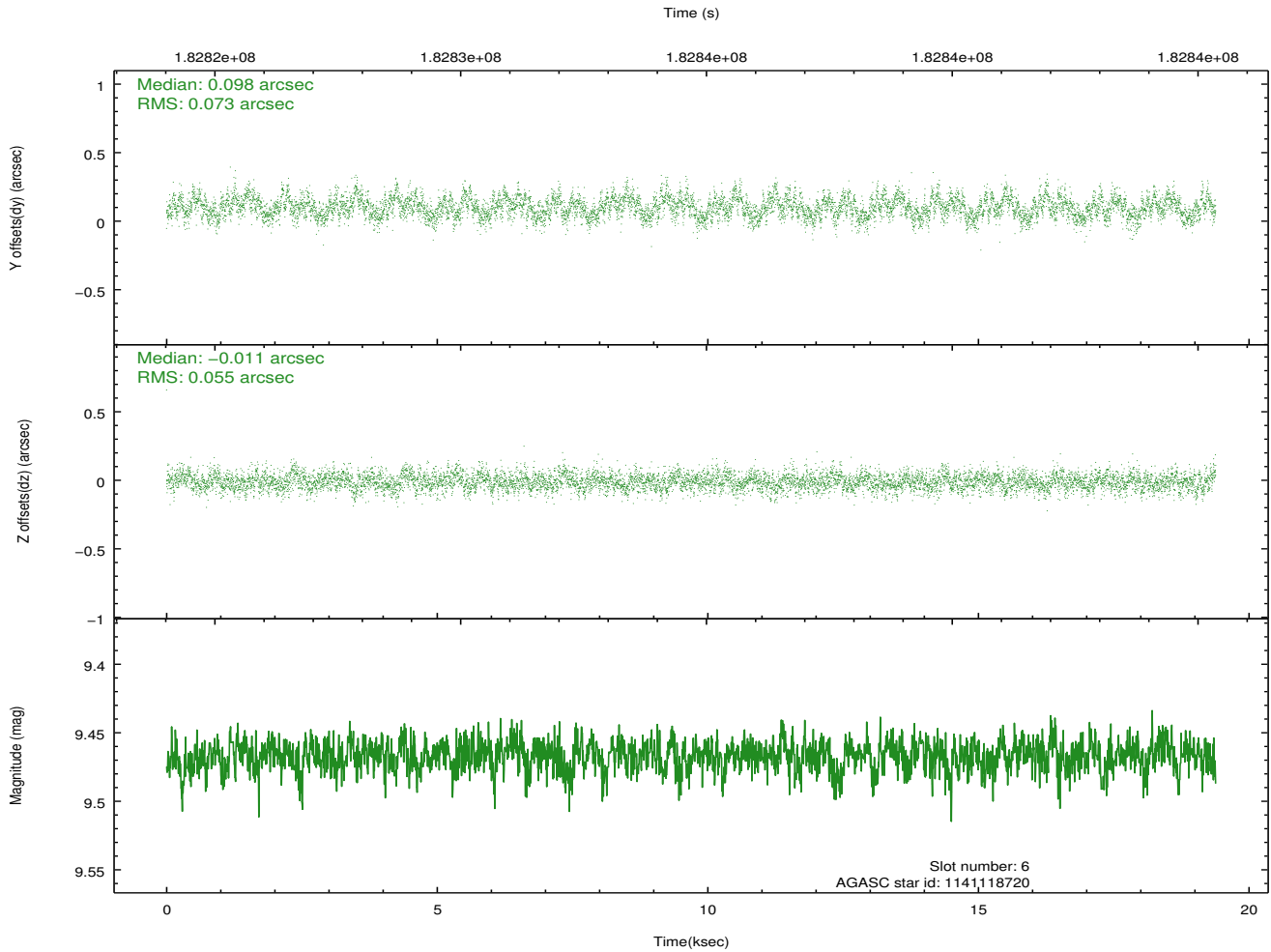
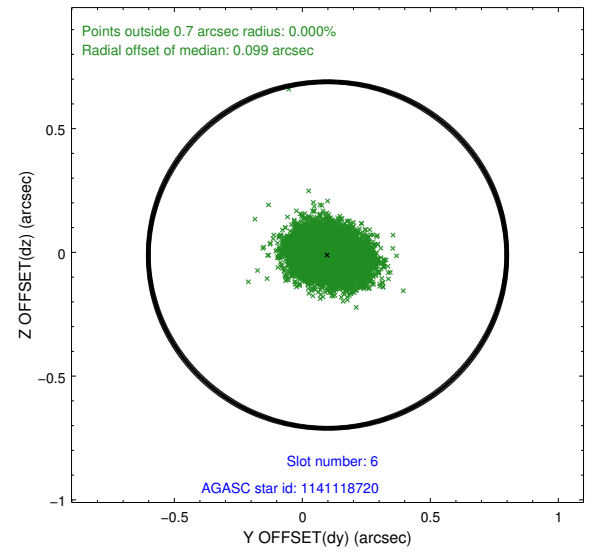
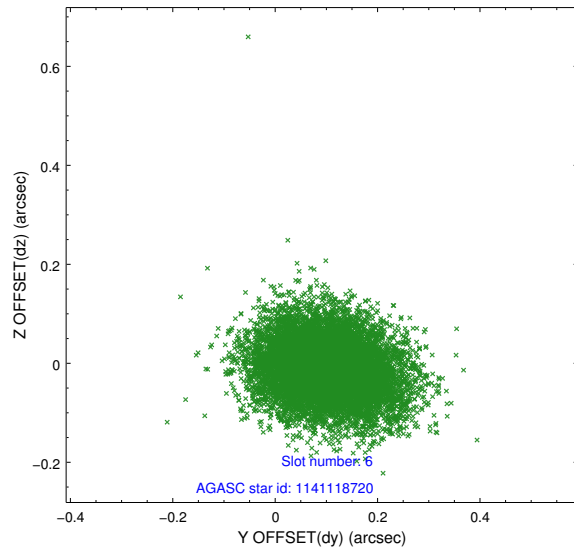
2.4.2 Slot 4



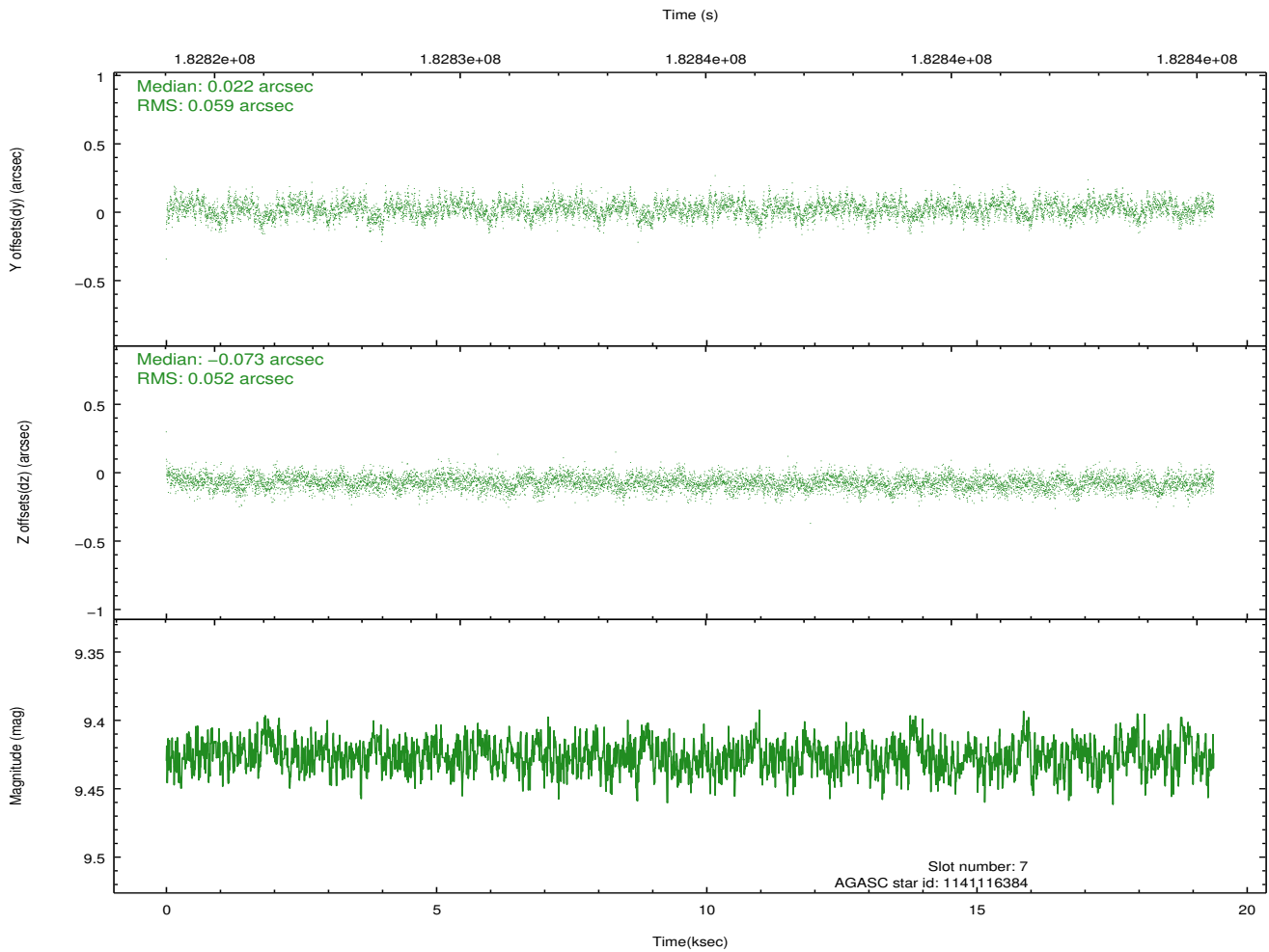
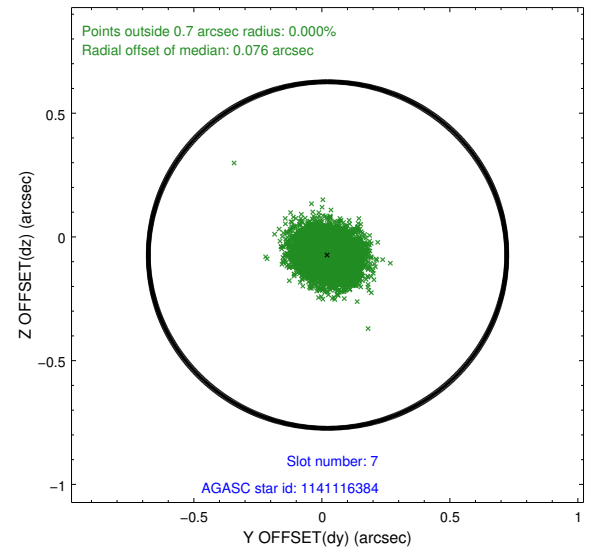
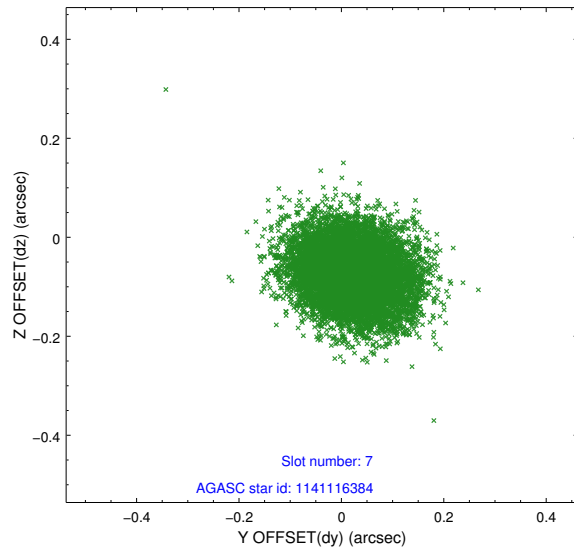
2.4.3 Slot 5



2.4.4 Slot 6

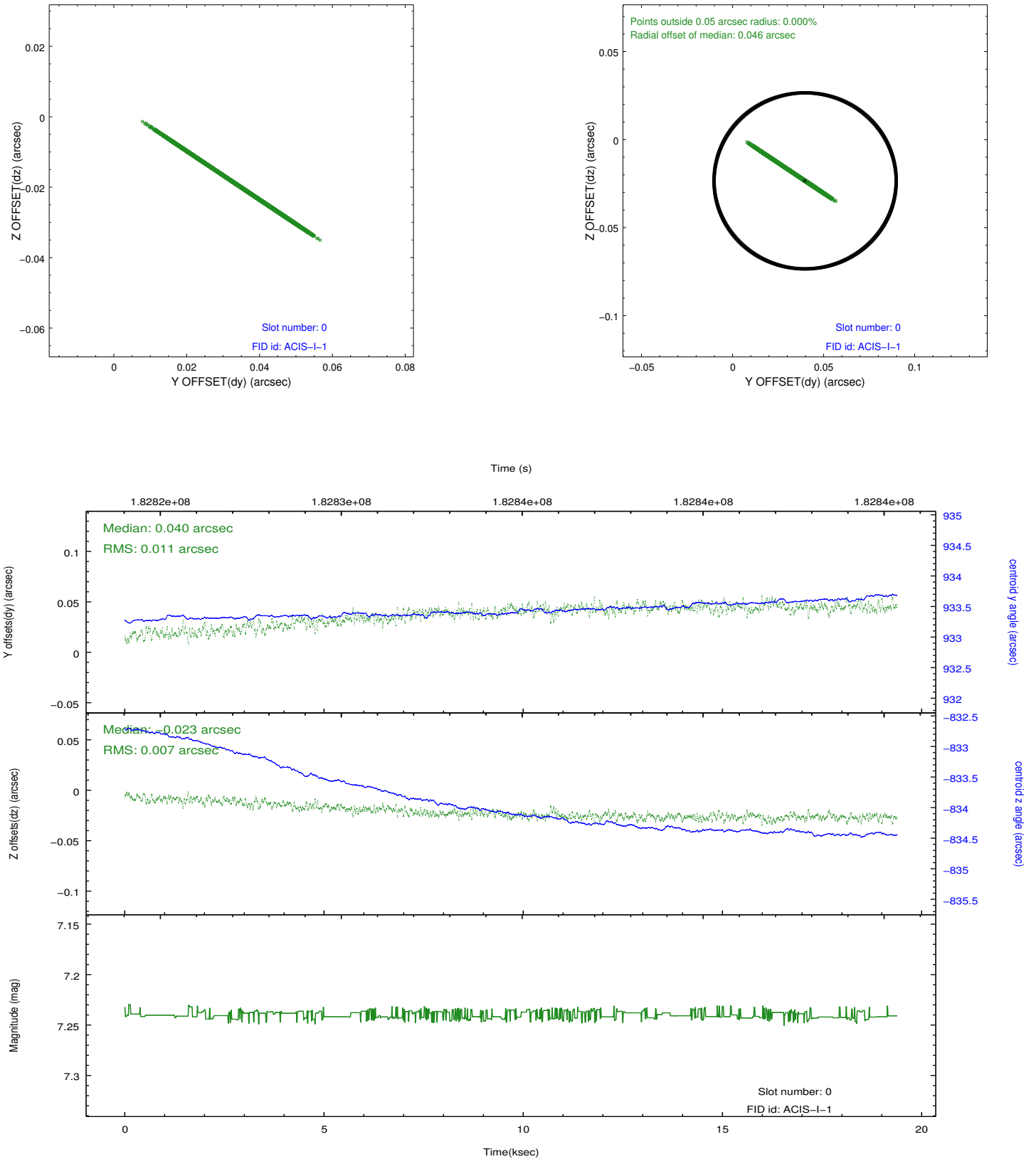


2.4.5 Slot 7

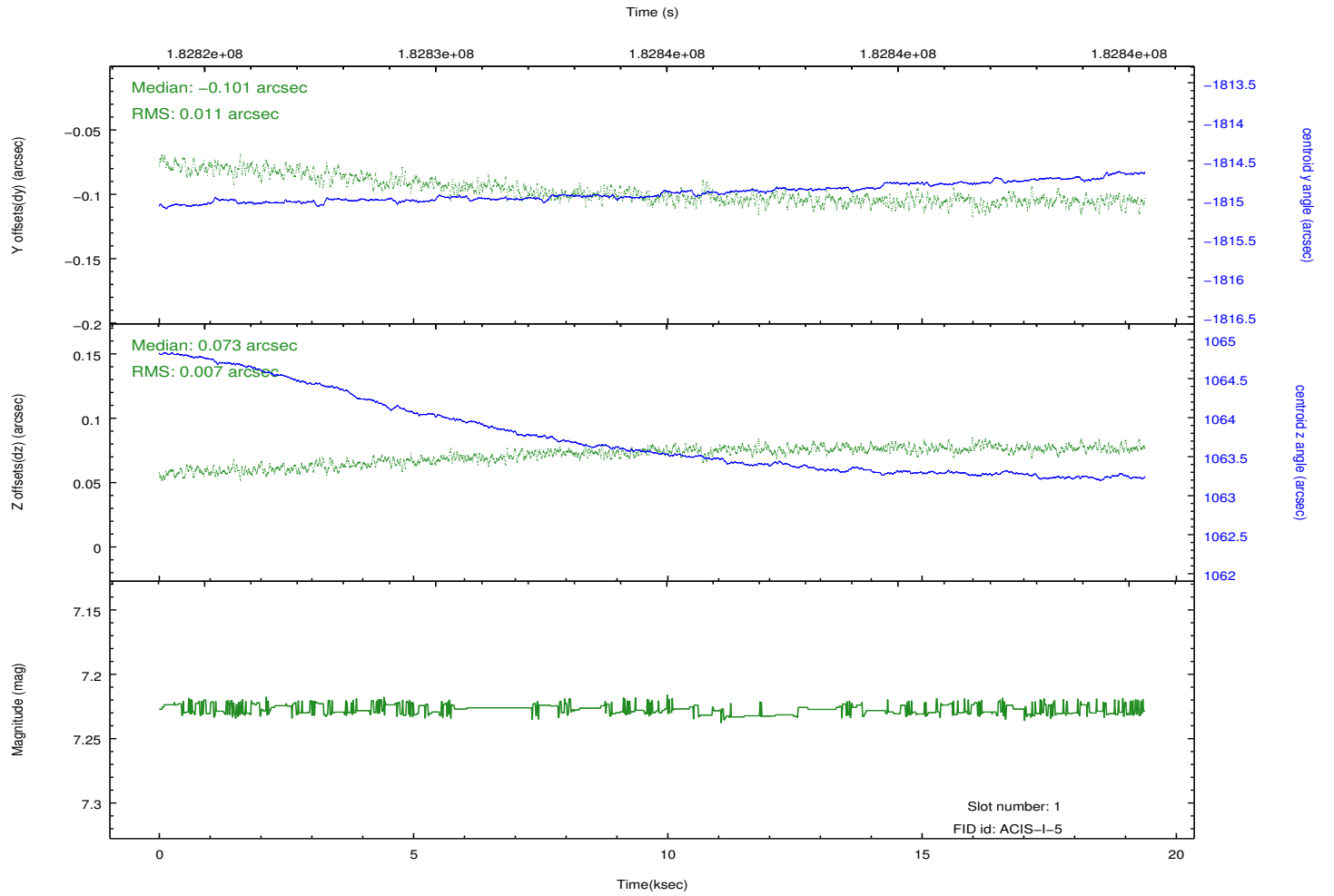
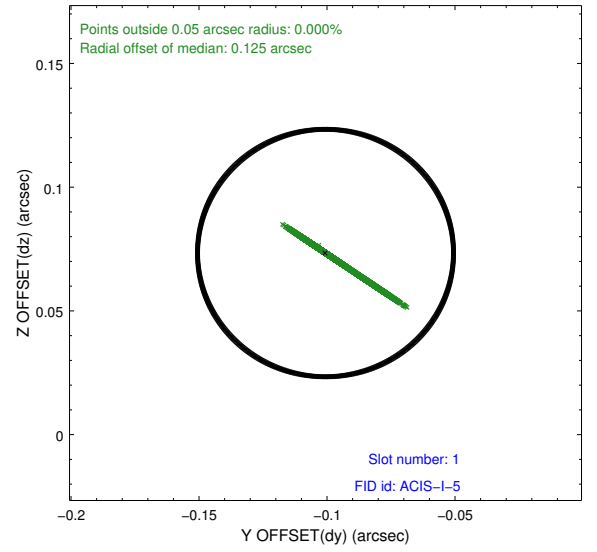
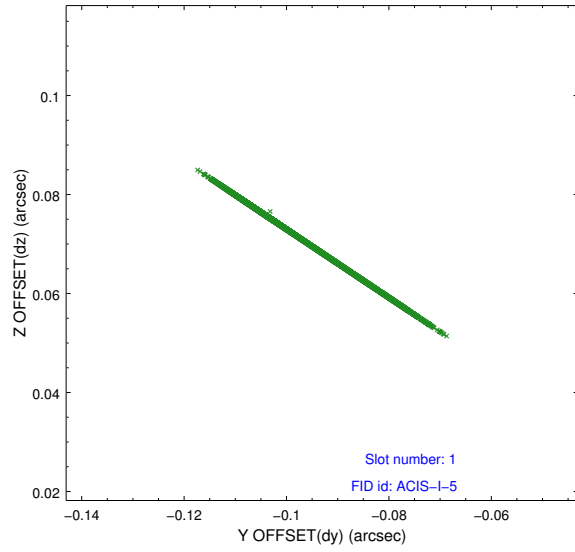


2.5 FID Slots

2.5.1 Slot 0



2.5.2 Slot 1



A Summary

A.1 Status

V&V Scientist	Beth Sundheim
V&V Date (YYYY-MM-DD)	2013.01.24
V&V Edition	1
V&V Disposition and Status	OK
V&V Charge Time	19.379

A.2 Comments

The fid light in slot 2 was removed from the aspect solution due to poor data quality. The aspect solution is improved by the removal of this fid light from the solution.