

V&V Reference Report

L2 ASCDS Version : 7.6.8

Observation 3516 - L2 Version 001
Chandra X-Ray Center

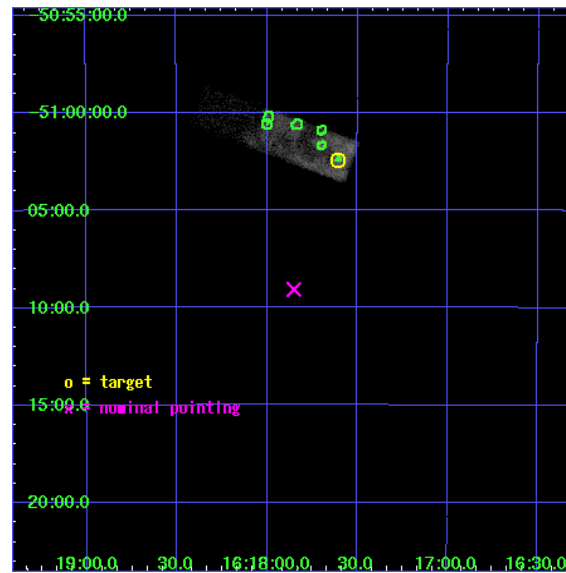
L2 Processing Date : Jul 14 2006

Contents

1	Front	2
2	OBI	3
2.1	OBI	3
2.1.1	Images	3
2.1.2	Bias	3
2.1.3	Parameters	4
2.1.4	Events	4
2.2	Compared Parameters	5
2.3	Aspect	6
2.4	Star Slots	9
2.4.1	Slot 3	9
2.4.2	Slot 4	10
2.4.3	Slot 5	11
2.4.4	Slot 6	12
2.4.5	Slot 7	13
2.5	FID Slots	14
2.5.1	Slot 0	14
2.5.2	Slot 1	15
2.5.3	Slot 2	16
3	Point Sources	17
A	Summary	18
A.1	Status	18
A.2	Comments	18

1 Front

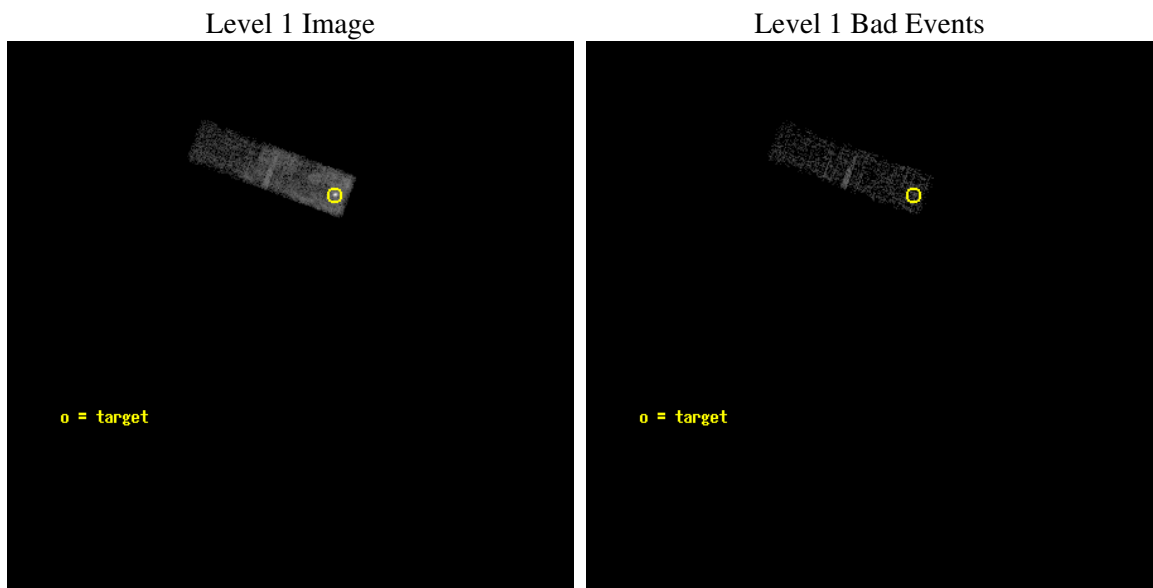
seq_num	500304
obs_id	3516
title	OBSERVATION OF SNR RCW103
observer	Professor Gordon Garmire
object	RCW103
dtcycle	0
cycle	P
ra_targ	244.40125
dec_targ	-51.040278
ra_nom	244.46285901794
dec_nom	-51.151242750507
roll_nom	290.3157948876
revision	2
ontime	5664.0000844002
livetime	5387.6154136785
ontime3	5664.0000844002
l2events	14507



2 OBI

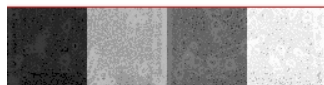
2.1 OBI

2.1.1 Images



2.1.2 Bias

Chip 3



2.1.3 Parameters

obi_num	0
ascdsver	7.6.8
caldbver	3.2.2
date	2006-07-14T06:08:38
revision	2

sched_exp_time	4944.000000
ontime	5775.3665459454
ontime3	5775.3665459454
l1events	24686

2.1.4 Events

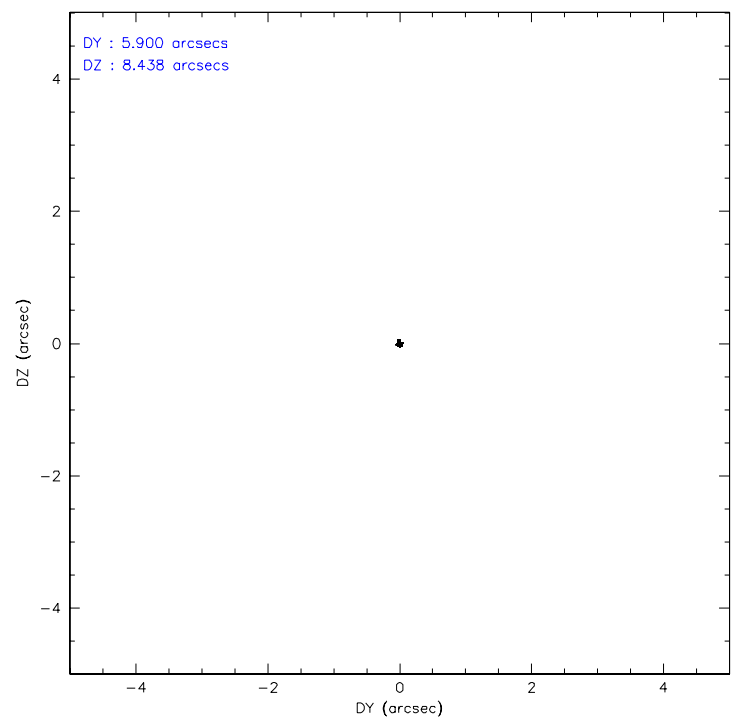
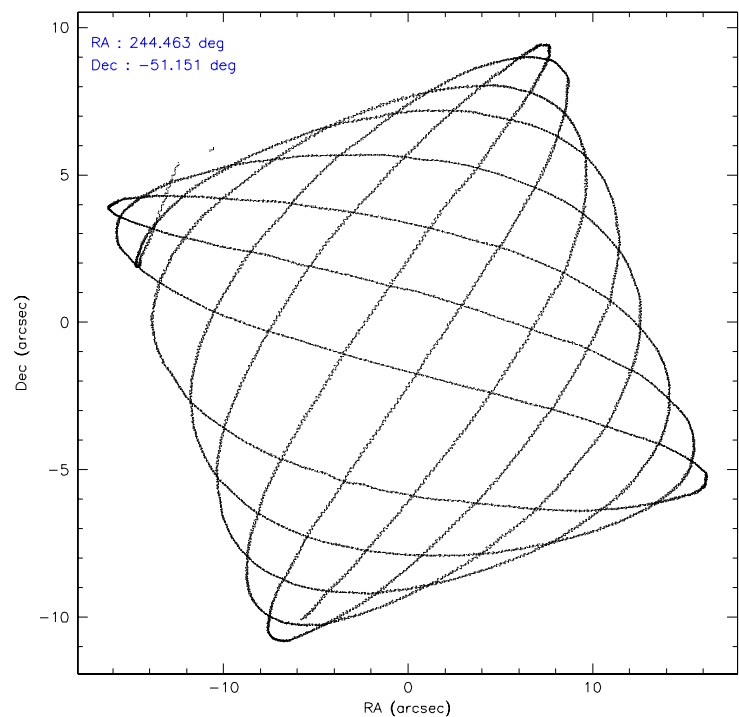
	ccd 3
level 1 events	24686
rejected events	9770
rejected %	39%

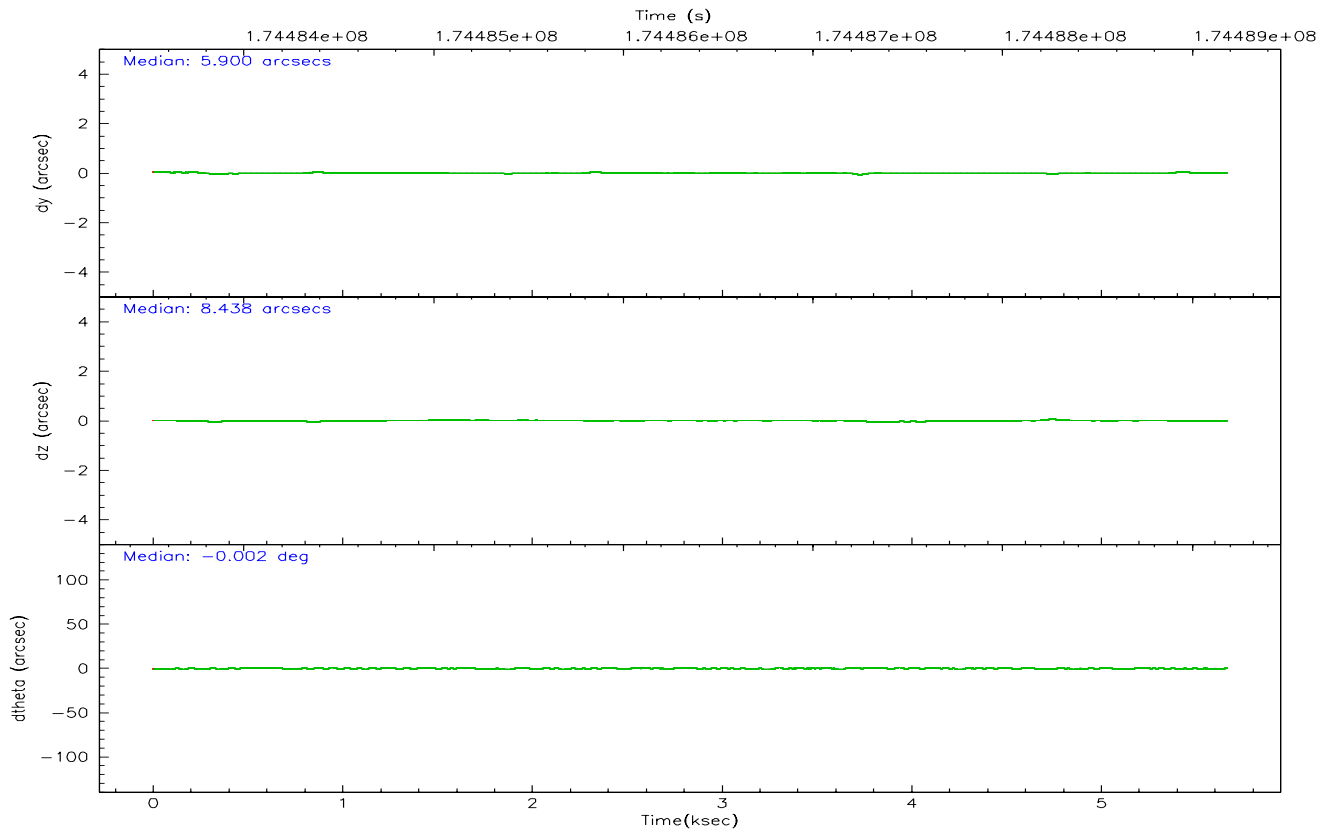
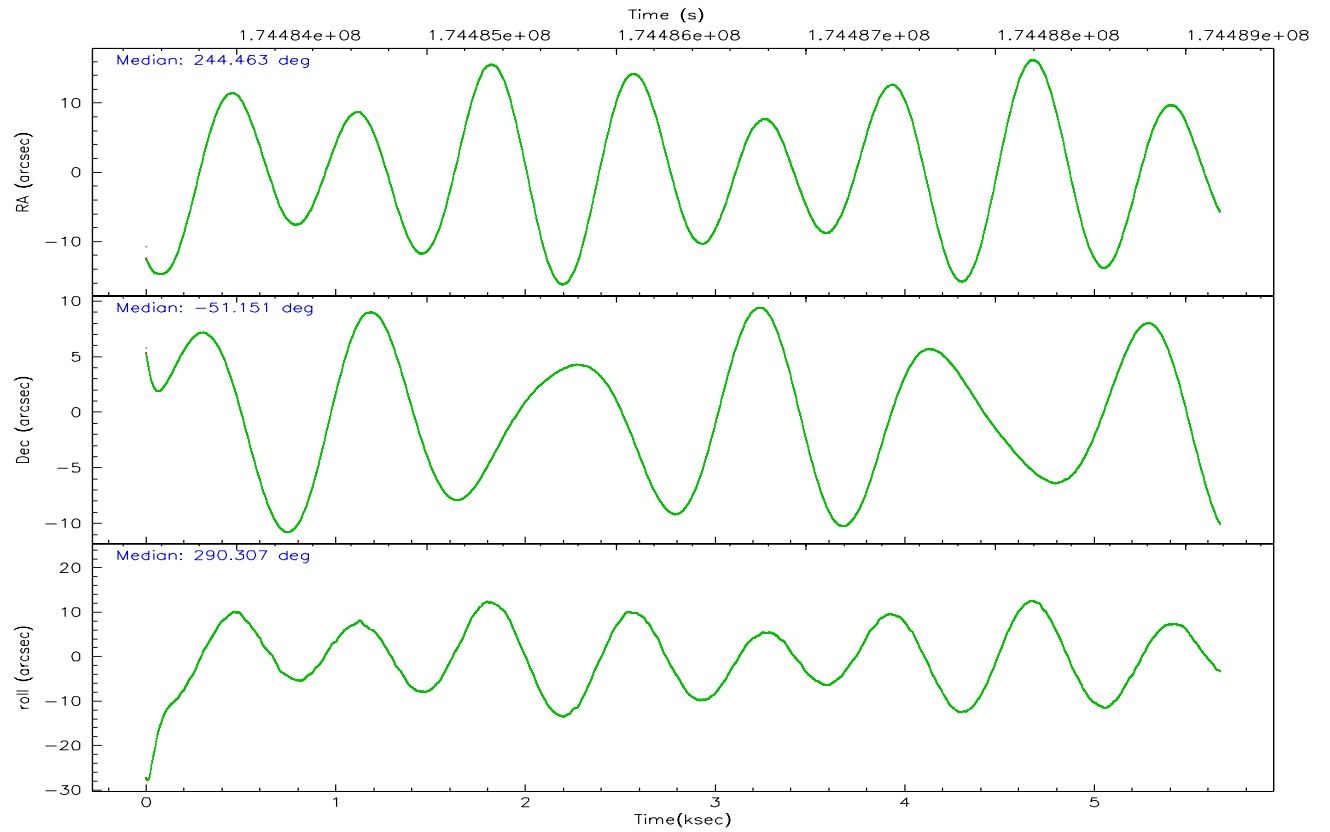
	ccd 3
grade 0 events	12217
	49%
grade 1 events	19
	0%
grade 2 events	1461
	5%
grade 3 events	564
	2%
grade 4 events	527
	2%
grade 5 events	367
	1%
grade 6 events	406
	1%
grade 7 events	9125
	36%

2.2 Compared Parameters

Parameter	Planned	Actual	Parameter	Planned	Actual
Instrument	ACIS	ACIS	Obspar format version number	6	6
Detector	ACIS-3	ACIS-3	Obspar file type	PREDICTED	ACTUAL
Grating	NONE	NONE	Obspar update status	NONE	UPDATED
Data mode	VFAINT	VFAINT	On-chip summing requested	N	N
Observation mode	POINTING	POINTING	Subarray requested	CUSTOM	1/4
Pointing RA	244.429176	244.4628590179391	Subarray start row	1	1
Pointing Dec	-51.133955	-51.15124275050674	Subarray row count	256	256
Pointing Roll	290.080908	290.3157948875964	Alternating exposures requested	N	N
SIM focus pos (mm)	-0.782348	-0.7809083437167272	Primary exposure time	0.000000	0.8
SIM defocus (mm)	0	0.001439871863259334			
SIM translation stage pos (mm)	-233.592463	-233.5874344608287			
SIM translation stage offset (mm)	0	-0.005018542100998502			
Observation start time	174484240.184000	174483014.12278			
Observation start date	2003-07-13T11:49:36	2003-07-13T11:30:14			
Observation end time	174489184.184000	174489828.83557			
Observation end date	2003-07-13T13:12:00	2003-07-13T13:23:48			
Read mode	TIMED	TIMED			

2.3 Aspect



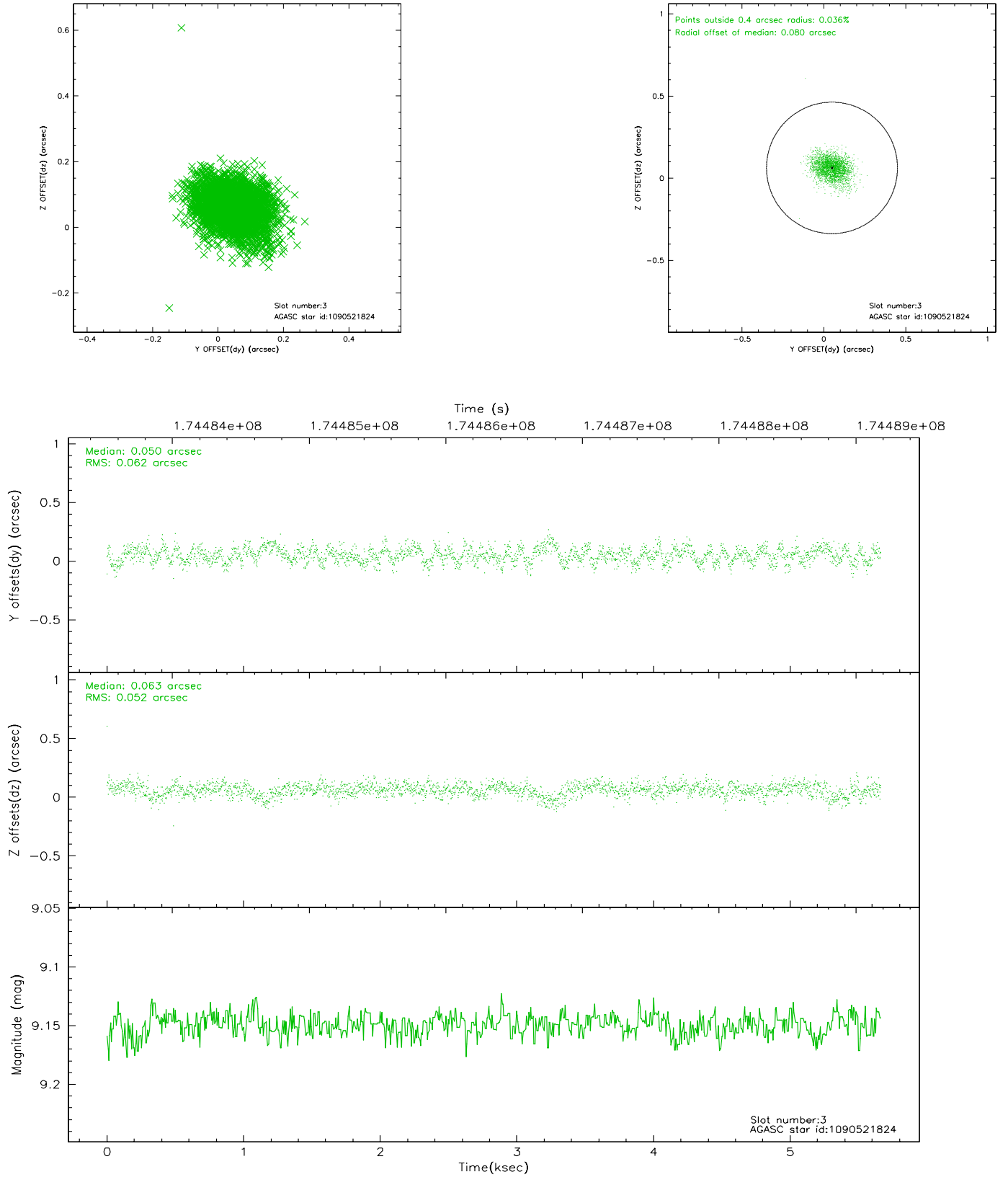


Slot Statistics

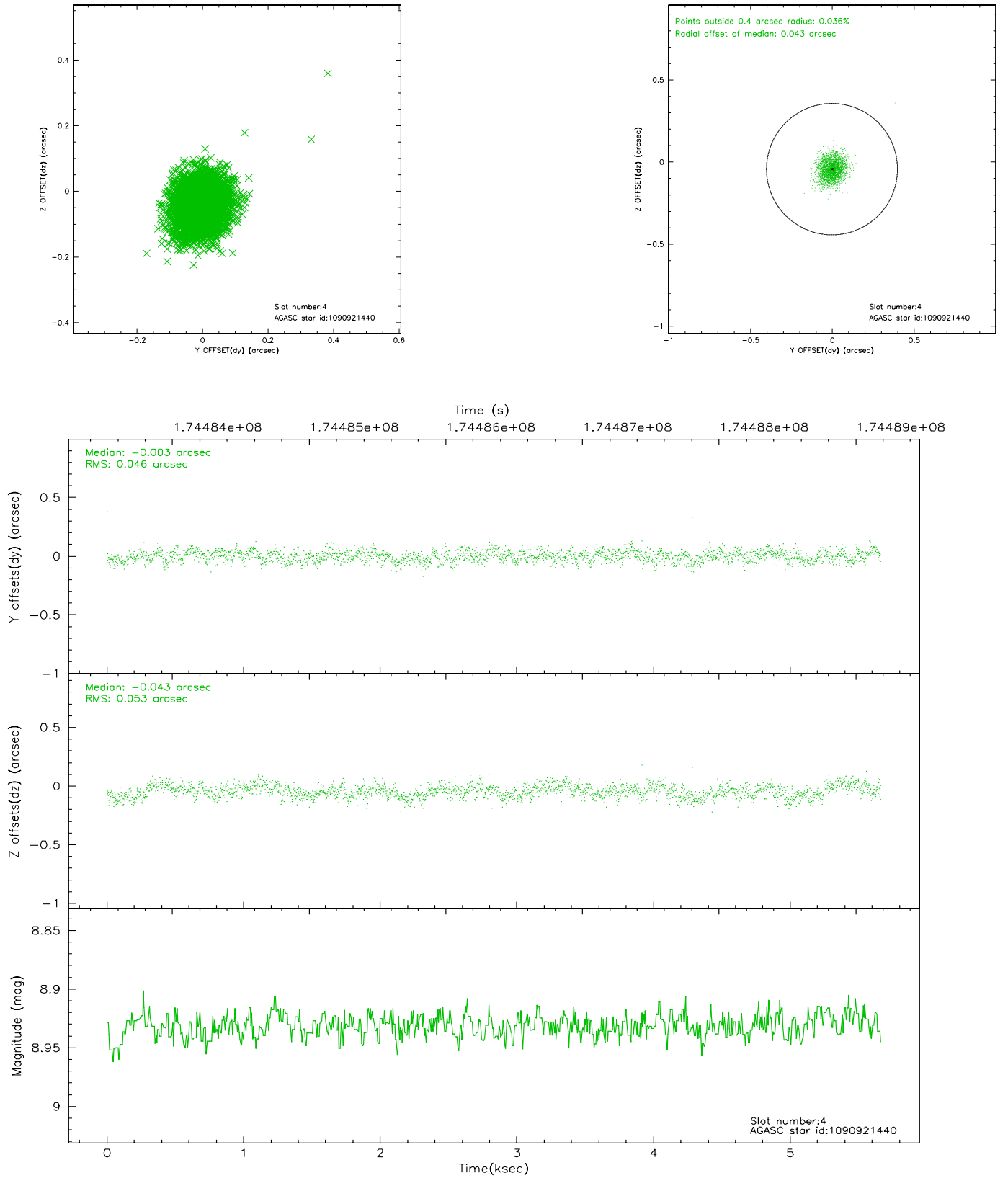
slot	status	id	mag	n_pts	med_dy	med_dz	dr1	dr2	ra	dec	mean_y	mean_z
0	FID	ACIS-I-1	7.25	1382	0.005	0.052	0.006	0.010	0.000000	0.000000	933.81	-831.82
1	FID	ACIS-I-5	7.23	1382	-0.123	0.044	0.006	0.009	0.000000	0.000000	-1813.83	1065.15
2	FID	ACIS-I-6	7.26	1382	0.028	-0.026	0.007	0.010	0.000000	0.000000	398.24	1710.77
3	GUIDE	1090521824	9.15	2763	0.050	0.063	0.085	0.140	244.711253	-50.470098	-2021.22	1427.28
4	GUIDE	1090921440	8.93	2762	-0.003	-0.043	0.075	0.118	243.292741	-50.752608	-2159.31	-1966.12
5	GUIDE	1090924096	8.06	2764	0.069	-0.030	0.053	0.090	243.849549	-51.016855	-841.84	-1090.49
6	GUIDE	1090924384	8.06	2764	-0.058	-0.034	0.061	0.097	243.330505	-50.934017	-1513.97	-2100.82
7	GUIDE	1091059112	9.08	2763	-0.058	0.053	0.088	0.136	245.180420	-50.736664	-747.87	2095.07

2.4 Star Slots

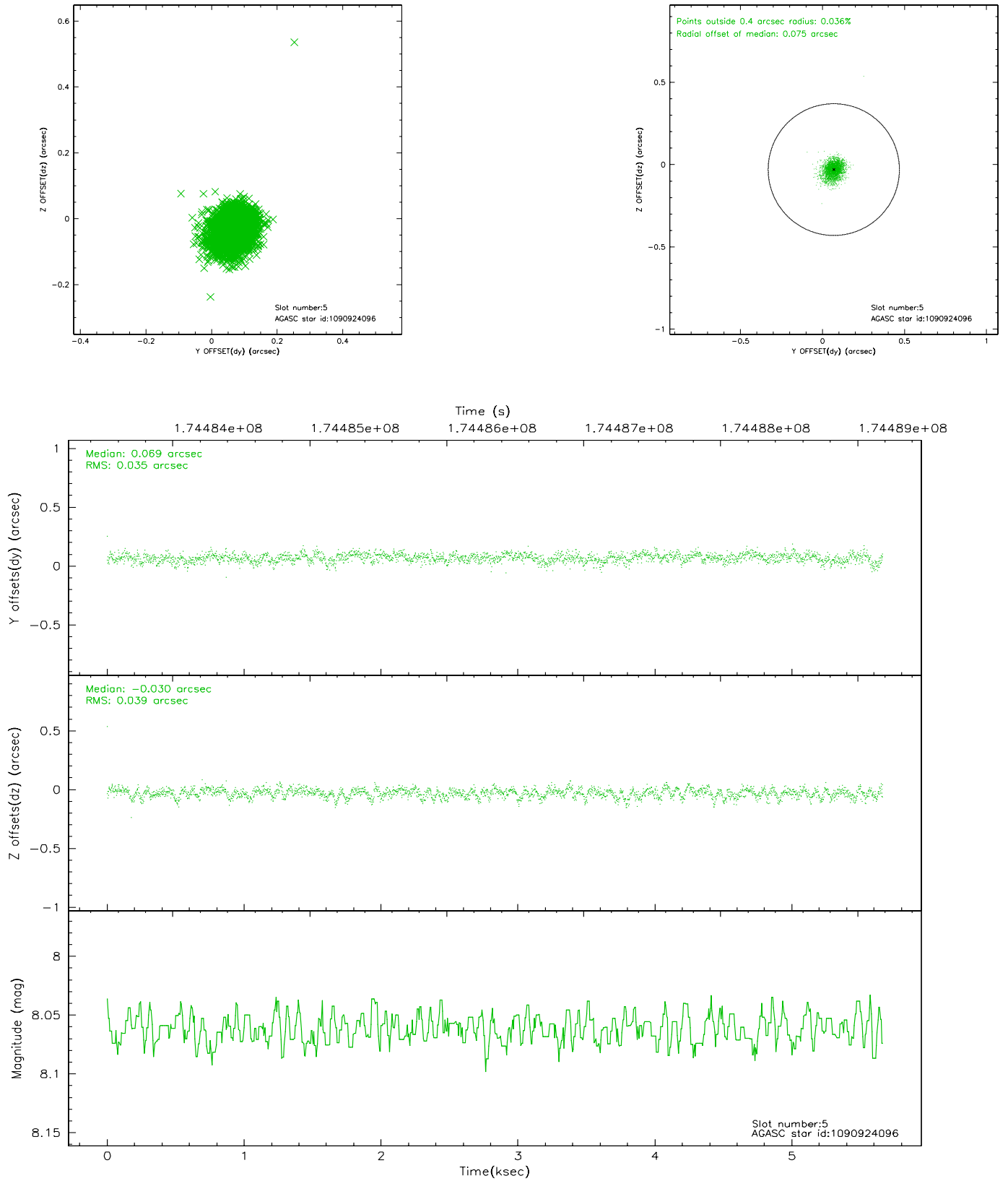
2.4.1 Slot 3



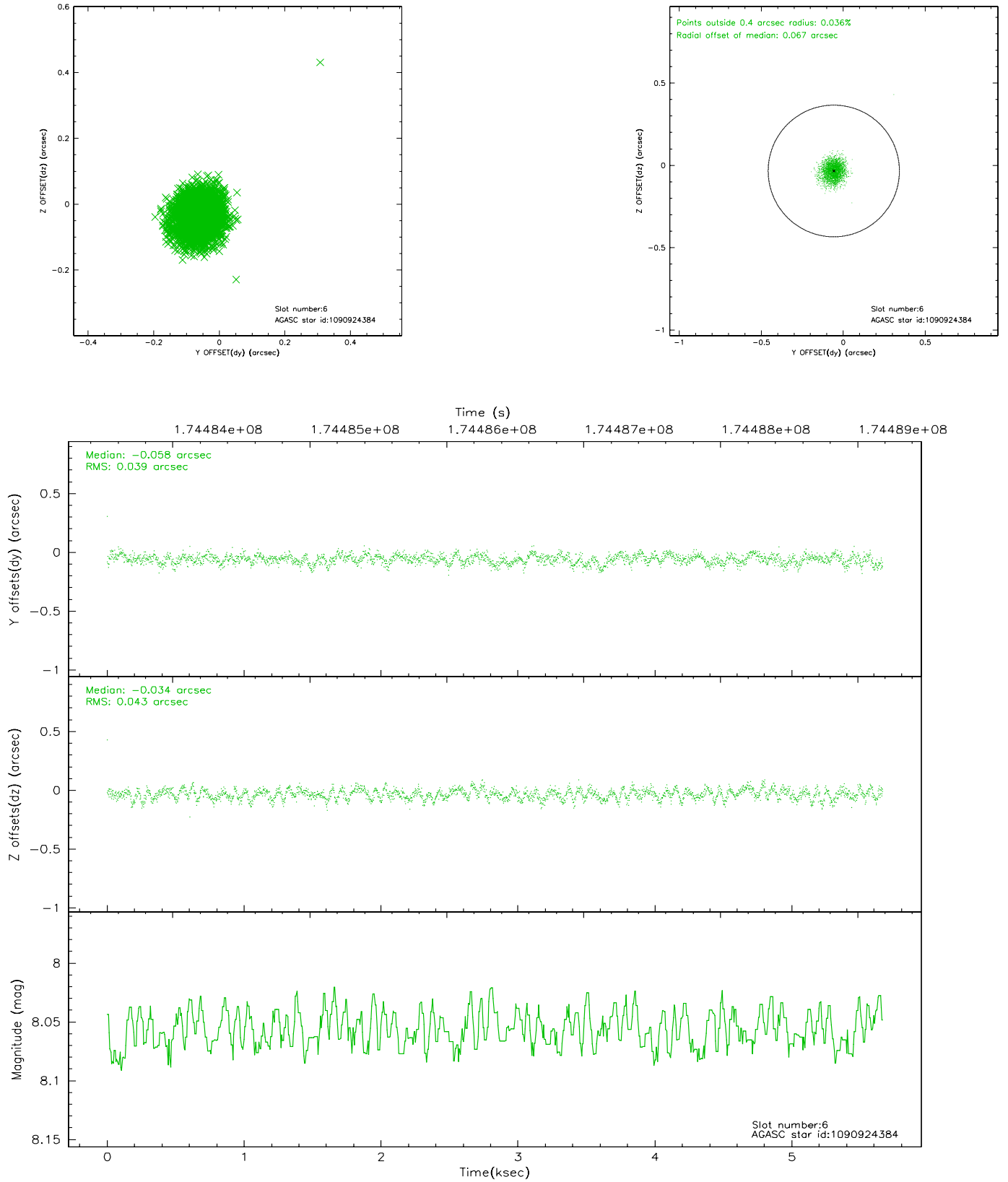
2.4.2 Slot 4



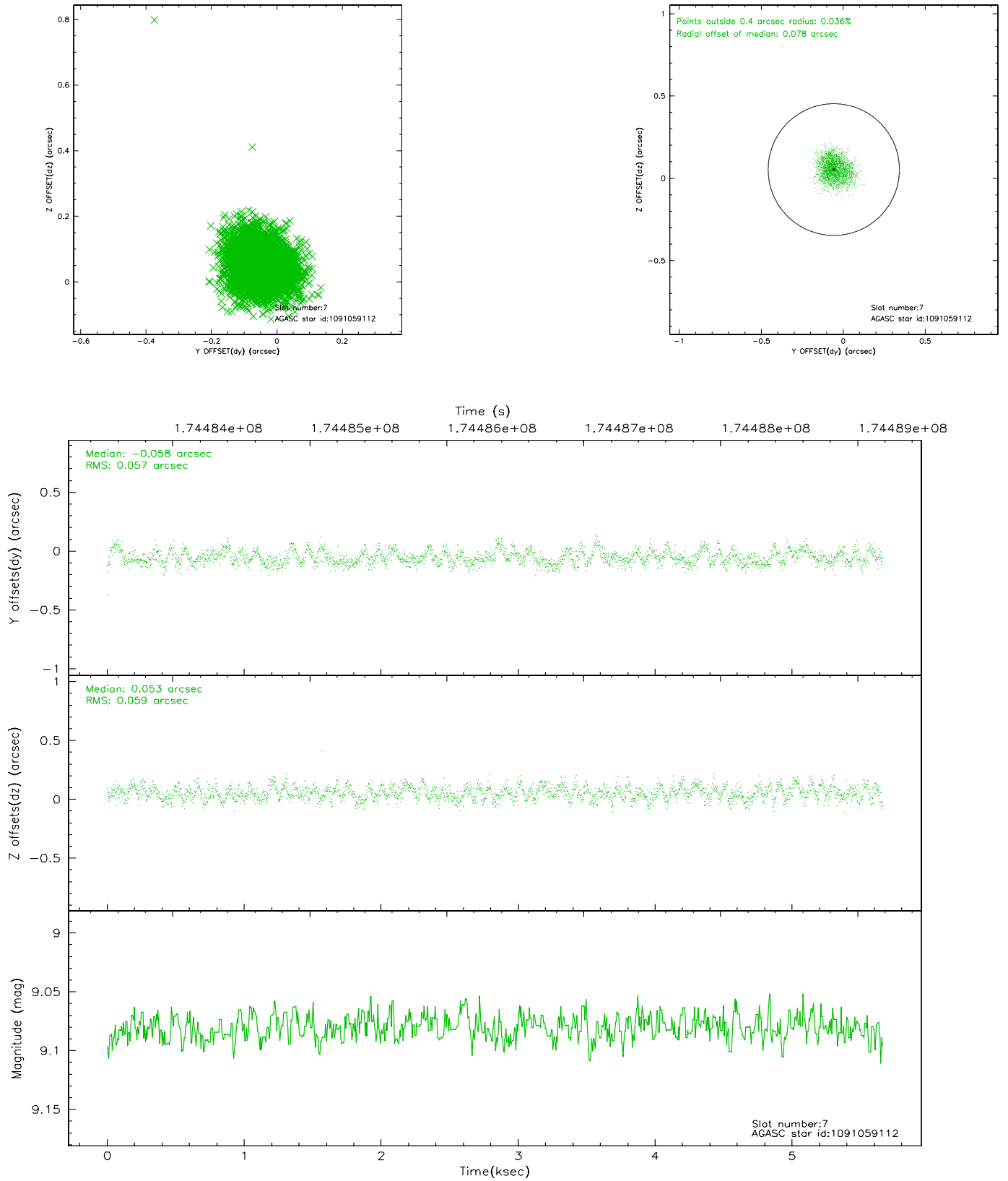
2.4.3 Slot 5



2.4.4 Slot 6

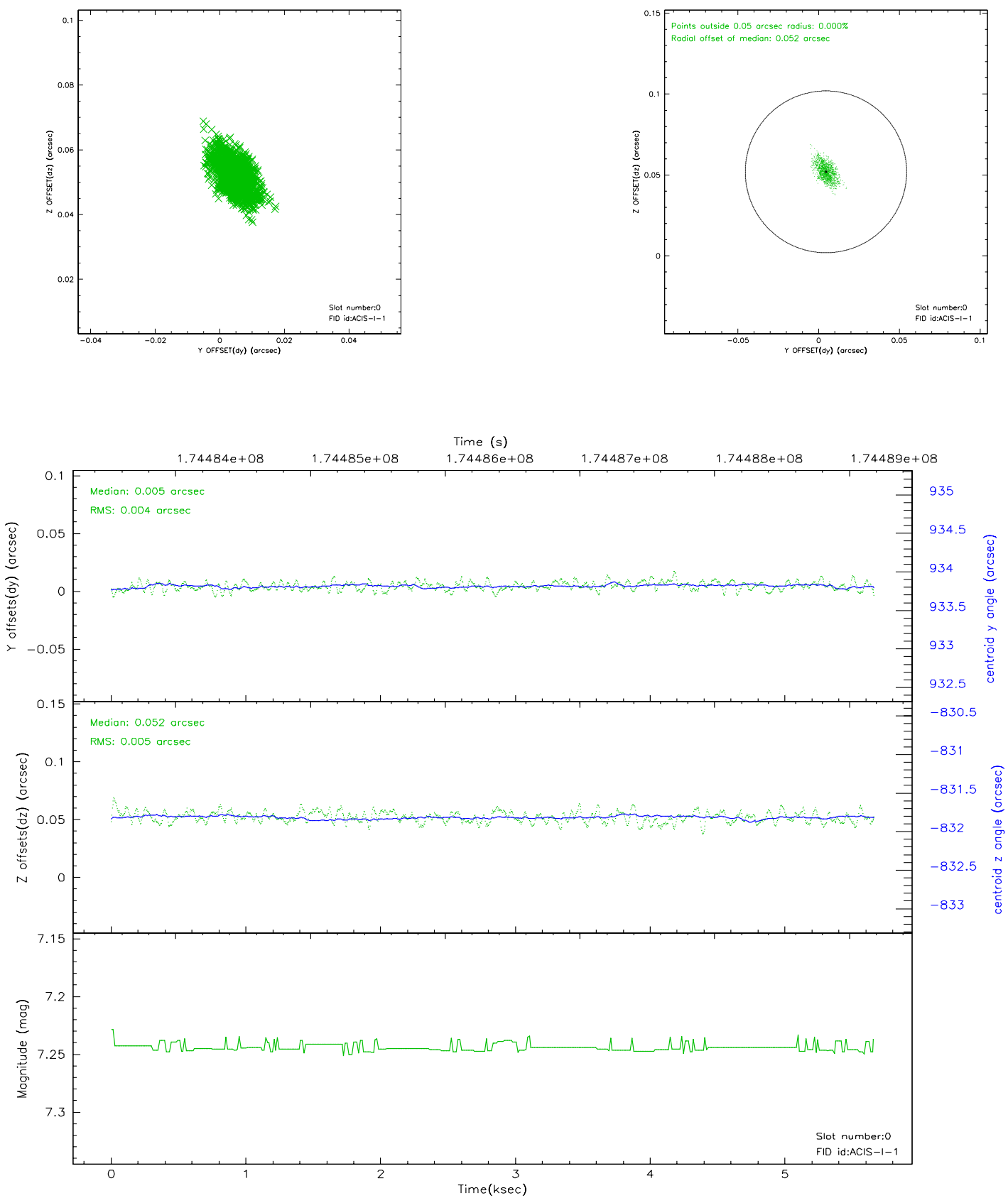


2.4.5 Slot 7

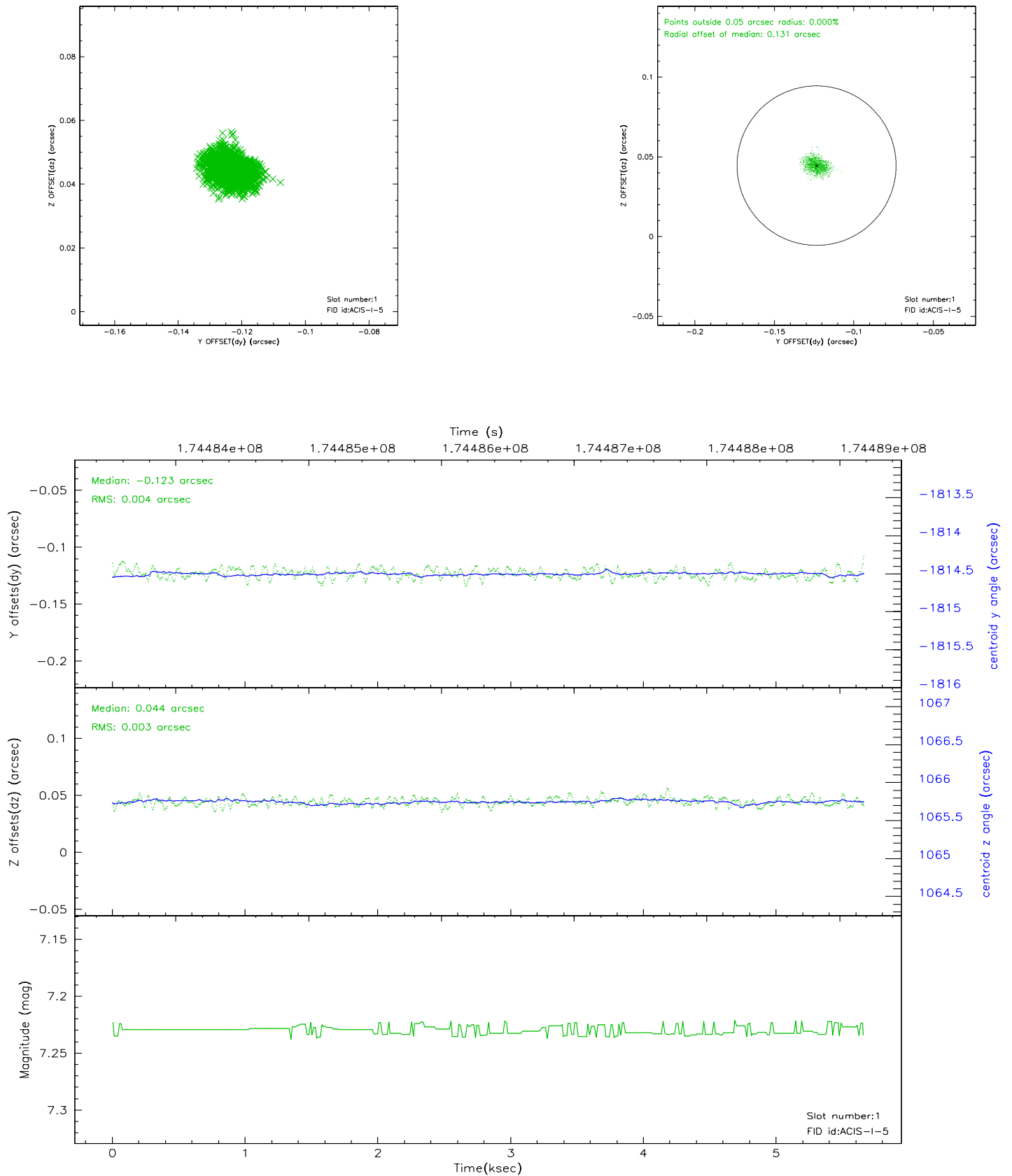


2.5 FID Slots

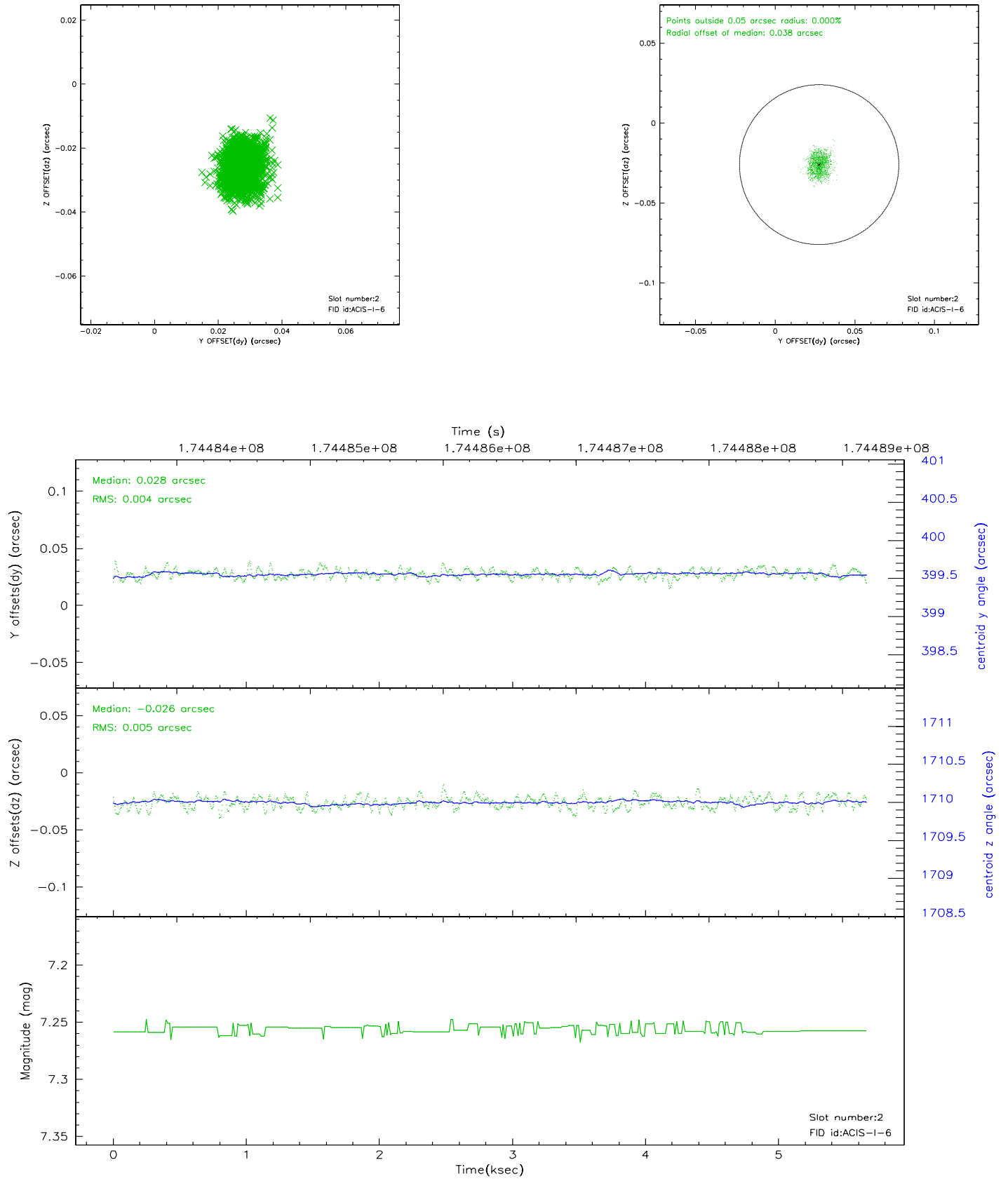
2.5.1 Slot 0



2.5.2 Slot 1

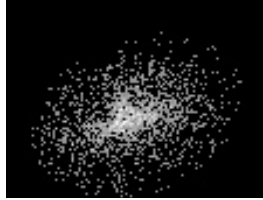


2.5.3 Slot 2



3 Point Sources

7.07 arcmin



A Summary

A.1 Status

V&V Scientist	Beth Sundheim
V&V Date (YYYY-MM-DD)	2006.07.14
V&V Edition	1
V&V Disposition and Status	OK
V&V Charge Time	5.664

A.2 Comments