

# V&V Reference Report

## L2 ASCDS Version : 7.6.8

Observation 3513 - L2 Version 001  
Chandra X-Ray Center

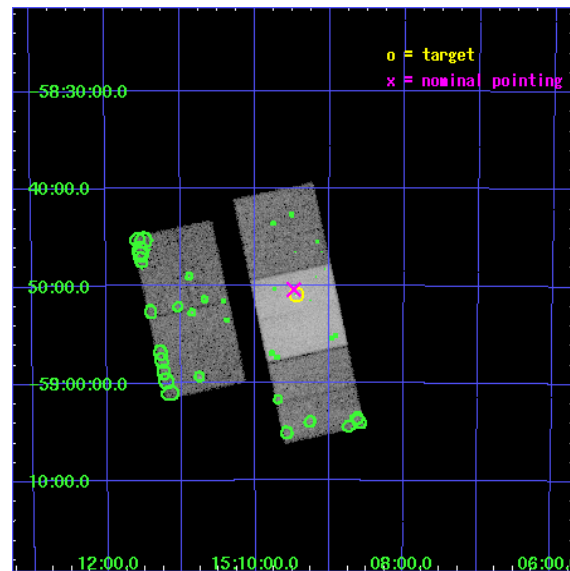
L2 Processing Date : Jul 20 2006

## Contents

<b>1</b>	<b>Front</b>	<b>2</b>
<b>2</b>	<b>OBI</b>	<b>3</b>
2.1	OBI . . . . .	3
2.1.1	Images . . . . .	3
2.1.2	Bias . . . . .	3
2.1.3	Parameters . . . . .	4
2.1.4	Events . . . . .	4
2.2	Compared Parameters . . . . .	5
2.3	Aspect . . . . .	6
2.4	Star Slots . . . . .	9
2.4.1	Slot 3 . . . . .	9
2.4.2	Slot 4 . . . . .	10
2.4.3	Slot 5 . . . . .	11
2.4.4	Slot 6 . . . . .	12
2.4.5	Slot 7 . . . . .	13
2.5	FID Slots . . . . .	14
2.5.1	Slot 0 . . . . .	14
2.5.2	Slot 1 . . . . .	15
2.5.3	Slot 2 . . . . .	16
<b>3</b>	<b>Point Sources</b>	<b>17</b>
<b>A</b>	<b>Summary</b>	<b>18</b>
A.1	Status . . . . .	18
A.2	Comments . . . . .	18

# 1 Front

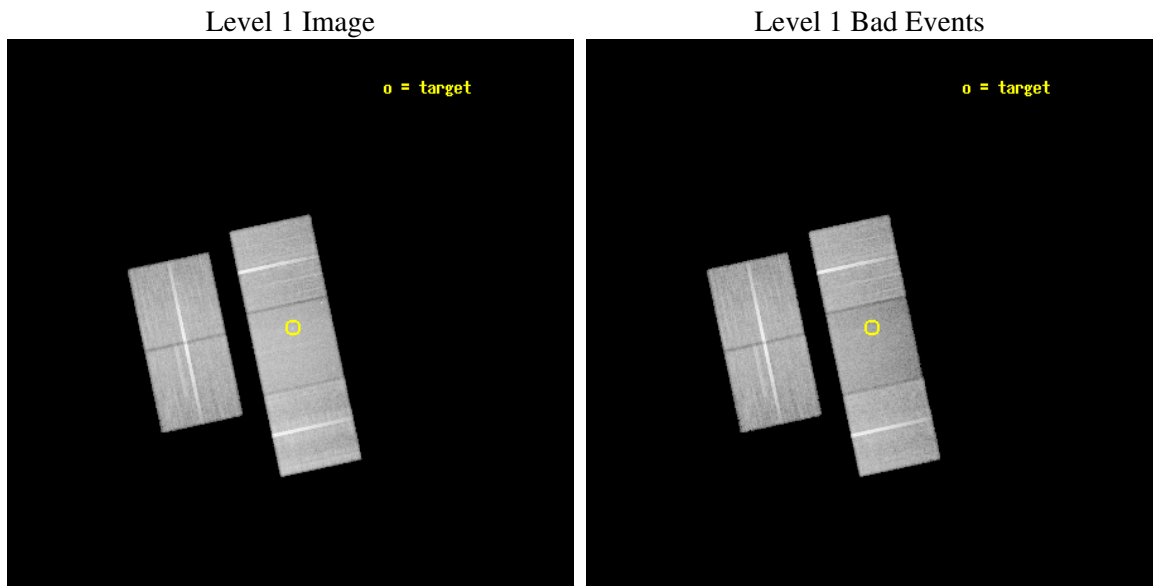
seq_num	500301
obs_id	3513
title	ALTERNATE-PSR J1509-5850 : VELA-LIKE PULSAR FOUND IN THE PARKES MULTIBEAM PULSAR SURVEY
observer	Professor Gordon Garmire
object	PSR J1509-5850
dtcycle	0
cycle	P
ra_targ	227.362917
dec_targ	-58.848889
ra_nom	227.36996281164
dec_nom	-58.839959994572
roll_nom	77.909240311689
revision	2
ontime	40141.899922818
livetime	39617.41644829
ontime2	40141.899922818
ontime3	40138.758962572
ontime6	40132.477002203
ontime7	40141.899922818
ontime8	40135.617972434
l2events	182471



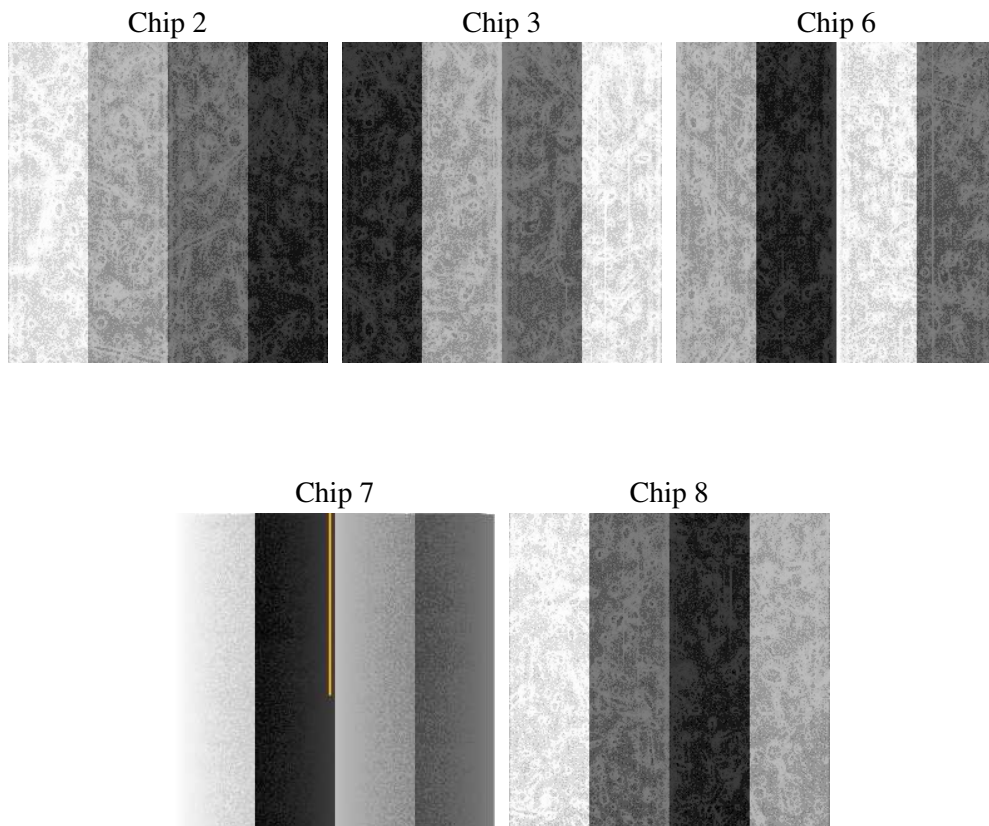
## 2 OBI

### 2.1 OBI

#### 2.1.1 Images



#### 2.1.2 Bias



### 2.1.3 Parameters

obi_num	0
ascdsver	7.6.8
caldbver	3.2.2
date	2006-07-20T23:41:26
revision	2

sched_exp_time	40000.000000
ontime	41828.724986255
ontime2	41828.725006193
ontime3	41825.584016055
ontime6	41819.302085578
ontime7	41828.724986255
ontime8	41819.302045703
l1events	1273938

### 2.1.4 Events

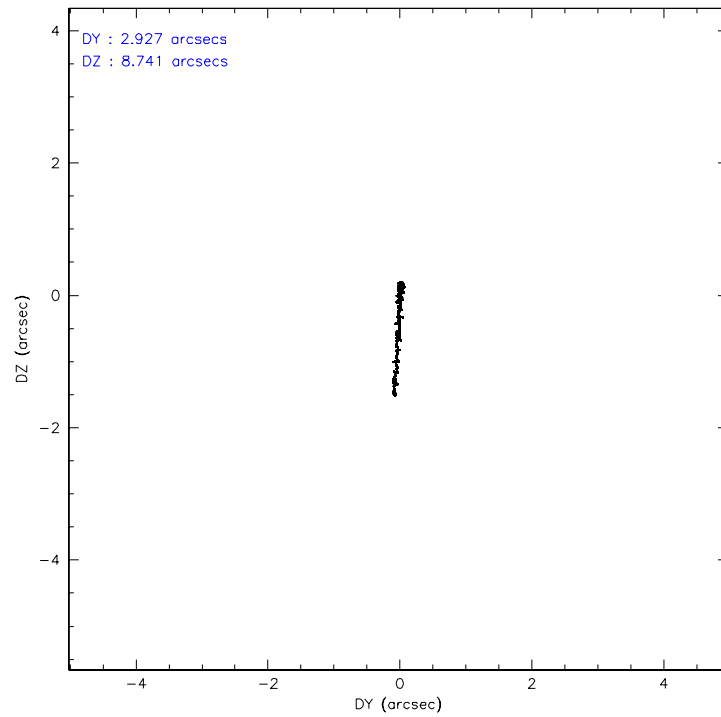
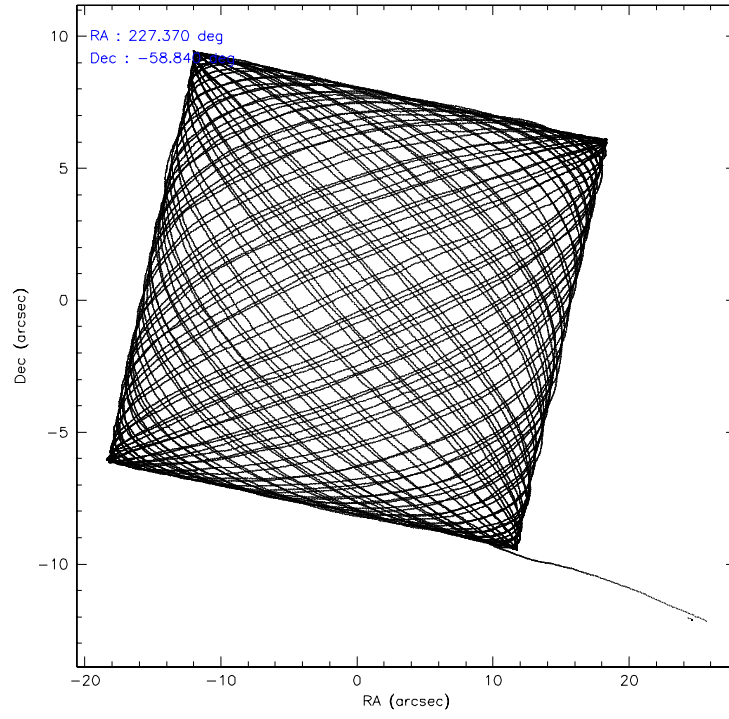
	ccd 2	ccd 3	ccd 6	ccd 7	ccd 8
level 1 events	241005	234350	244768	255177	298638
rejected events	218968	213204	219800	151981	236152
rejected %	90%	90%	89%	59%	79%

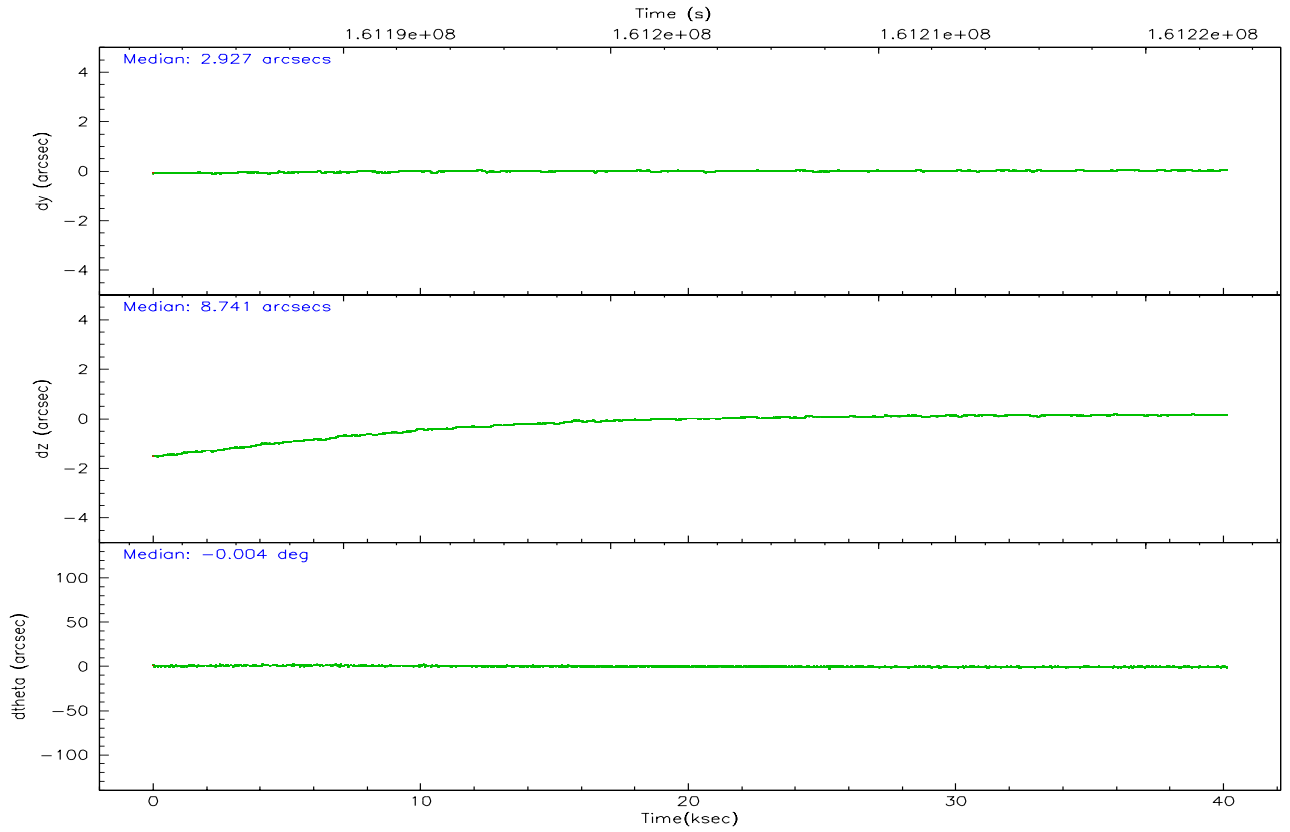
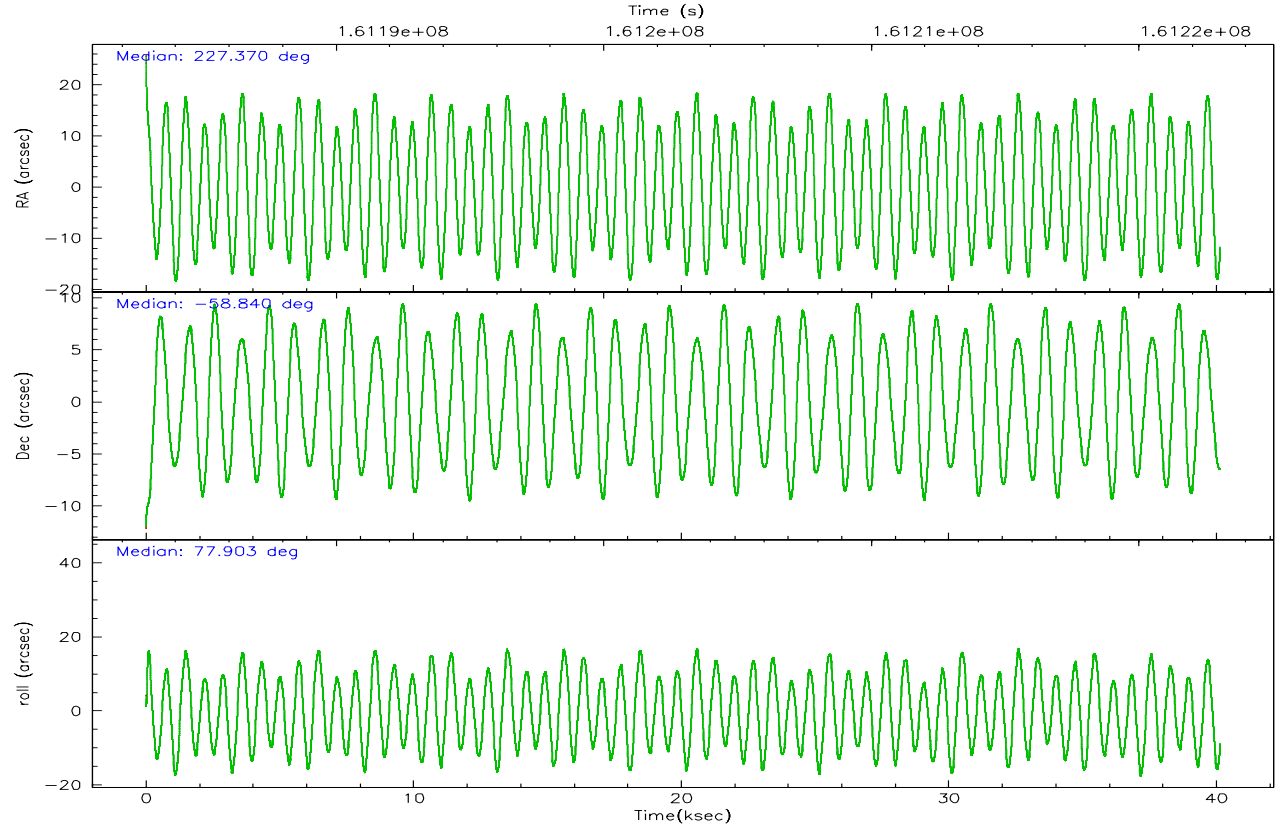
	ccd 2	ccd 3	ccd 6	ccd 7	ccd 8
grade 0 events	8571	8351	9832	6873	19734
	3%	3%	4%	2%	6%
grade 1 events	114	119	99	122	211
	0%	0%	0%	0%	0%
grade 2 events	5198	4580	5288	26454	14241
	2%	1%	2%	10%	4%
grade 3 events	2569	2529	2876	6662	7044
	1%	1%	1%	2%	2%
grade 4 events	2589	2439	2771	6403	6597
	1%	1%	1%	2%	2%
grade 5 events	7393	8775	9183	19688	12926
	3%	3%	3%	7%	4%
grade 6 events	4071	4156	5234	61157	17437
	1%	1%	2%	23%	5%
grade 7 events	210500	203401	209485	127818	220448
	87%	86%	85%	50%	73%

## 2.2 Compared Parameters

Parameter	Planned	Actual	Parameter	Planned	Actual
Instrument	ACIS	ACIS	Obspar format version number	6	6
Detector	ACIS-23678	ACIS-23678	Obspar file type	PREDICTED	ACTUAL
Grating	NONE	NONE	Obspar update status	NONE	UPDATED
Data mode	VFAINT	VFAINT	On-chip summing requested	N	N
Observation mode	POINTING	POINTING	Subarray requested	NONE	NONE
Pointing RA	227.386847	227.3699628116411	Alternating exposures requested	N	N
Pointing Dec	-58.865739	-58.8399599945716	Primary exposure time	0.000000	3.1
Pointing Roll	77.767067	77.90924031168903			
SIM focus pos (mm)	-0.684267	-0.6828225247311905			
SIM defocus (mm)	0	0.001444936568705701			
SIM translation stage pos (mm)	-190.132523	-190.1400660498719			
SIM translation stage offset (mm)	0	0.00754346686406393			
Observation start time	161183039.184000	161181209.82282			
Observation start date	2003-02-09T13:02:55	2003-02-09T12:33:29			
Observation end time	161223039.184000	161223778.0746			
Observation end date	2003-02-10T00:09:35	2003-02-10T00:22:58			
Read mode	TIMED	TIMED			

## 2.3 Aspect





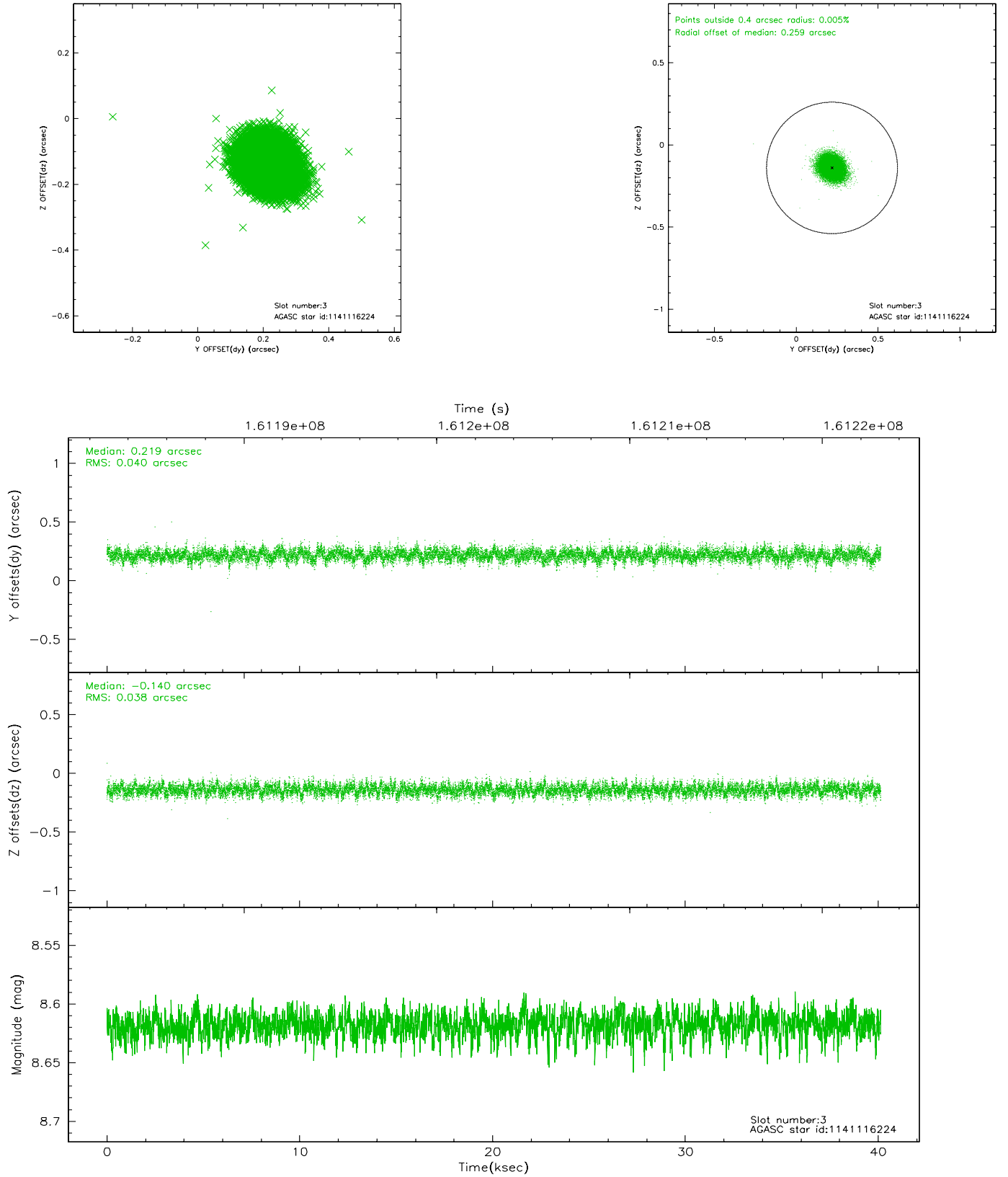
### Slot Statistics

slot	status	id	mag	n_pts	med_dy	med_dz	dr1	dr2	ra	dec	mean_y	mean_z
0	FID	ACIS-S-2	7.11	9792	-0.000	0.025	0.007	0.011	0.000000	0.000000	-755.55	-1729.69
1	FID	ACIS-S-4	7.20	9793	-0.019	0.012	0.007	0.012	0.000000	0.000000	2157.69	178.77
2	FID	ACIS-S-6	7.36	9793	-0.009	-0.030	0.008	0.014	0.000000	0.000000	406.43	816.14
3	GUIDE	1141116224	8.62	19581	0.219	-0.140	0.058	0.095	226.951673	-59.390300	-2016.75	379.03
4	GUIDE	1141119096	9.46	19581	0.156	0.092	0.085	0.139	228.052751	-59.529718	-2084.09	-1695.53
5	GUIDE	1141120752	8.95	19579	-0.125	-0.201	0.089	0.143	226.972418	-58.548951	947.19	1002.11
6	GUIDE	1141118472	9.41	19575	-0.021	0.004	0.116	0.191	228.673319	-58.346269	2320.38	-1983.22
7	GUIDE	1141116424	9.02	19576	-0.224	0.245	0.083	0.132	228.804932	-58.574872	1560.26	-2384.55

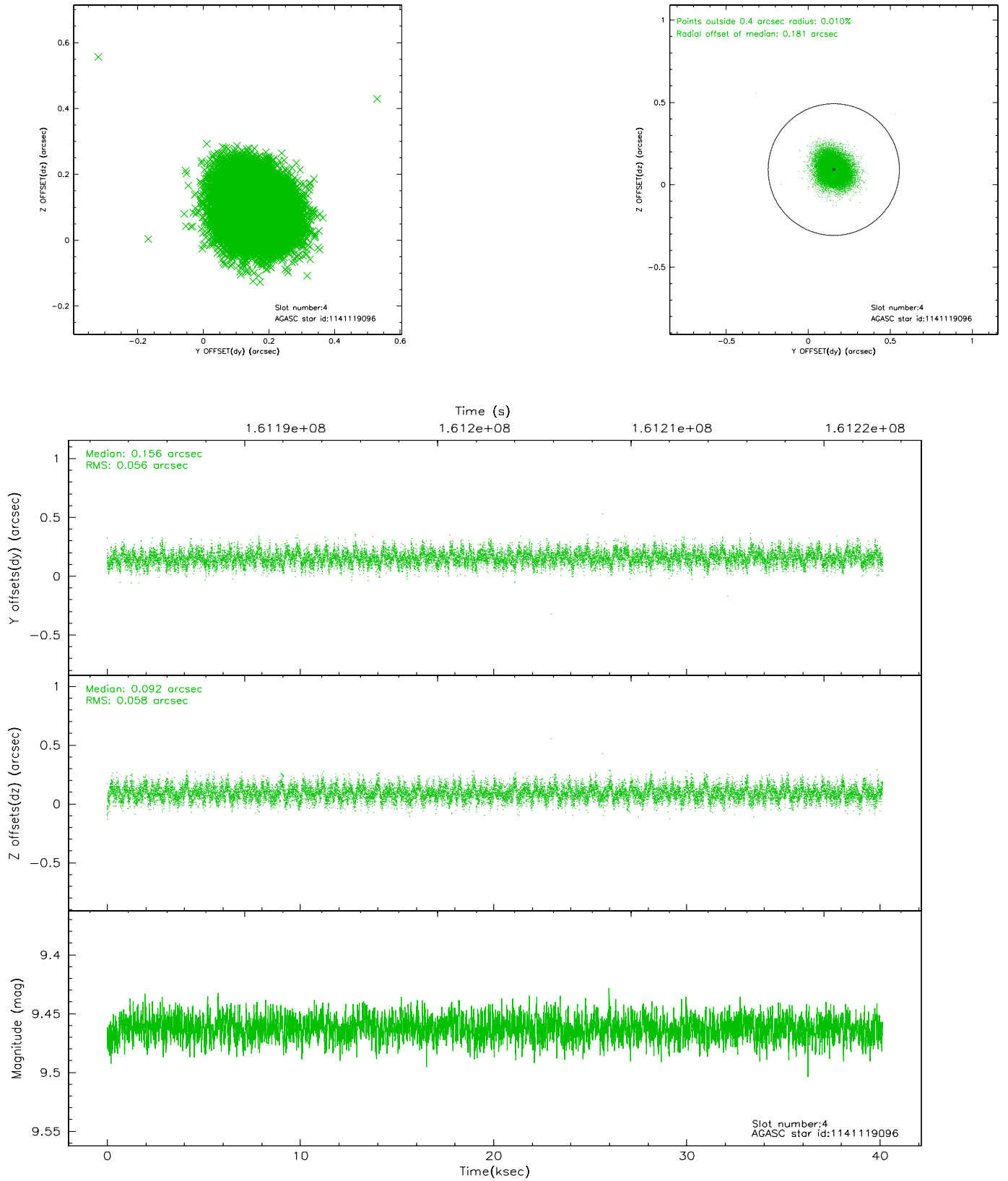


## 2.4 Star Slots

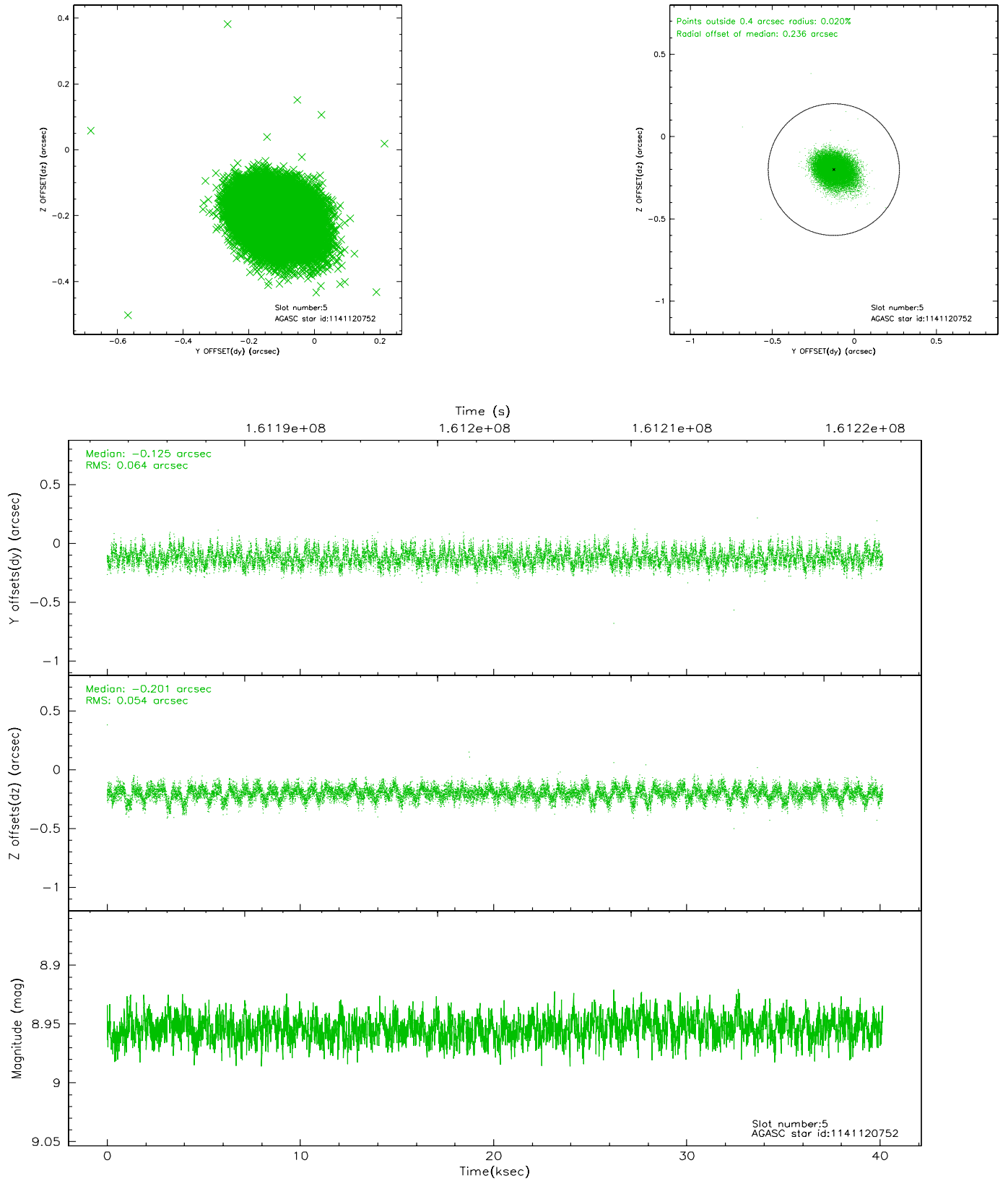
### 2.4.1 Slot 3



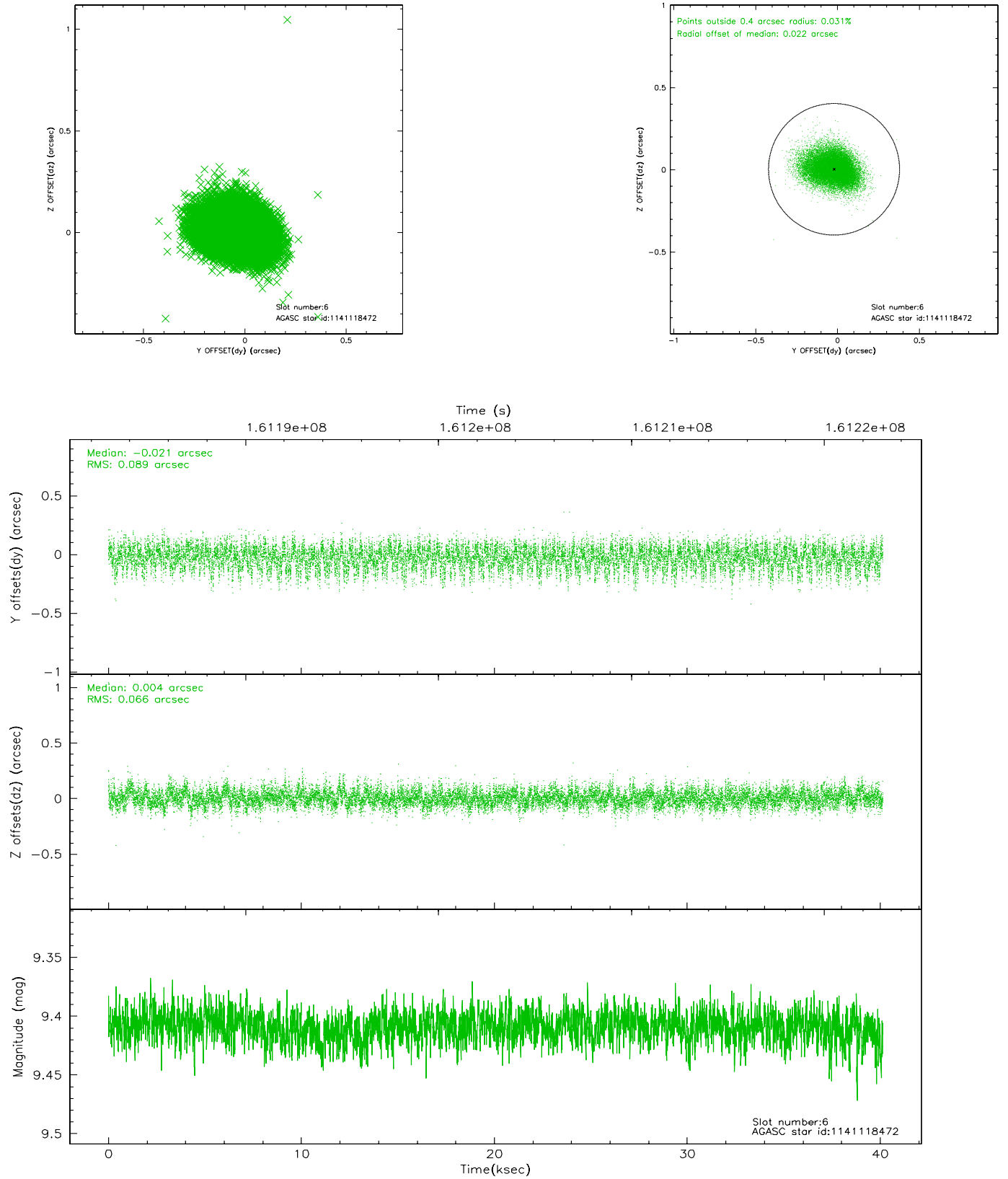
## 2.4.2 Slot 4



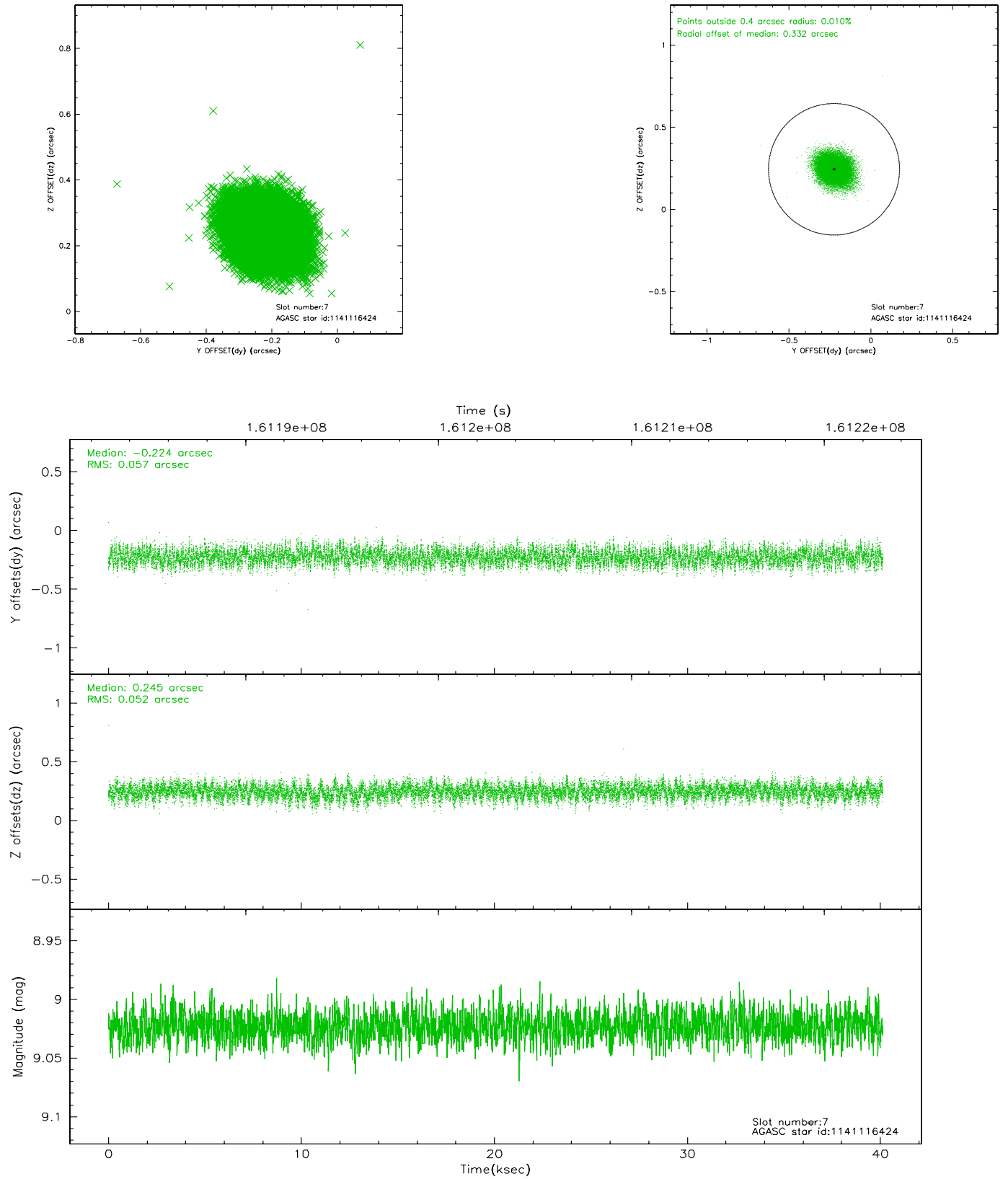
### 2.4.3 Slot 5



## 2.4.4 Slot 6

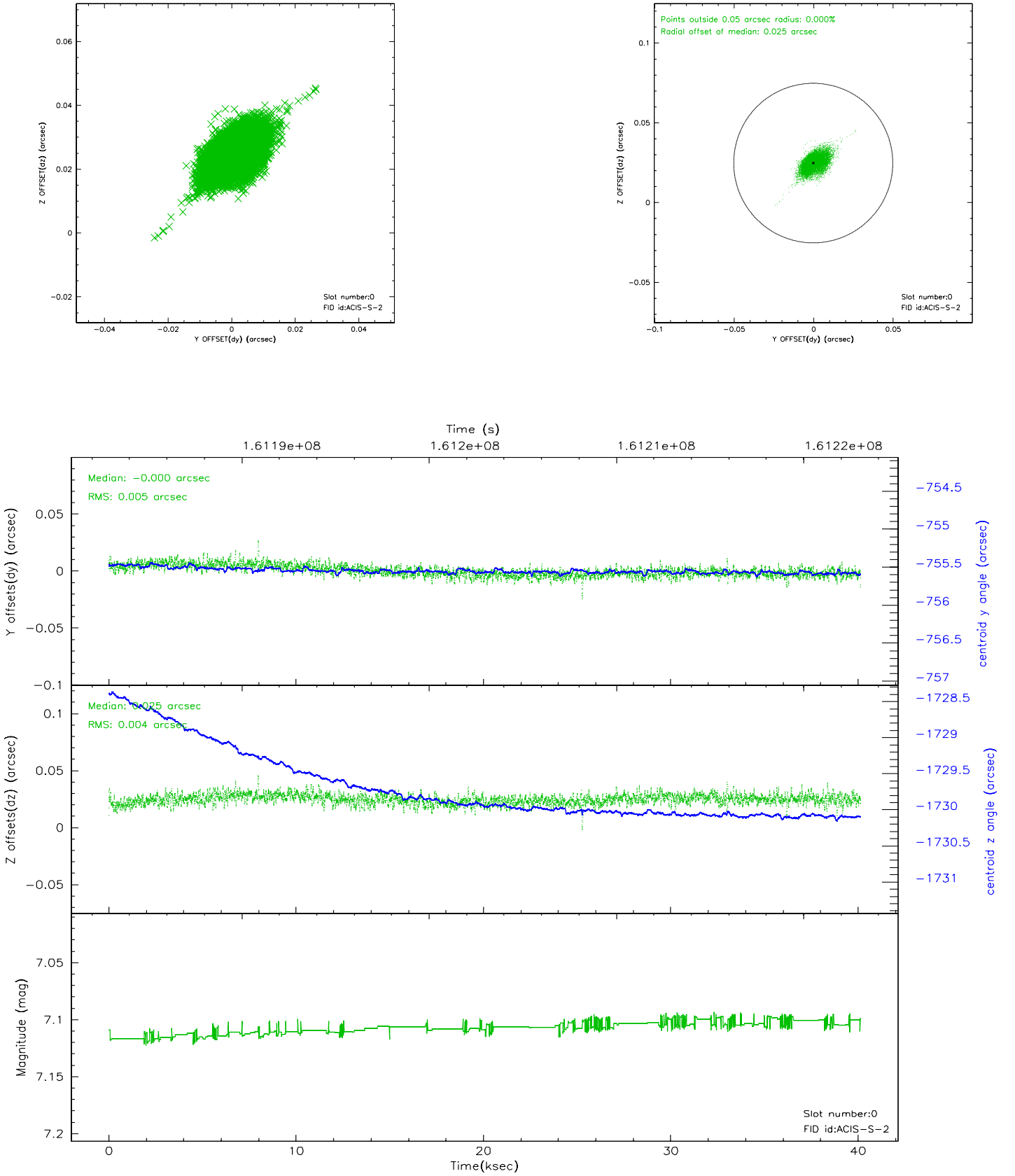


## 2.4.5 Slot 7

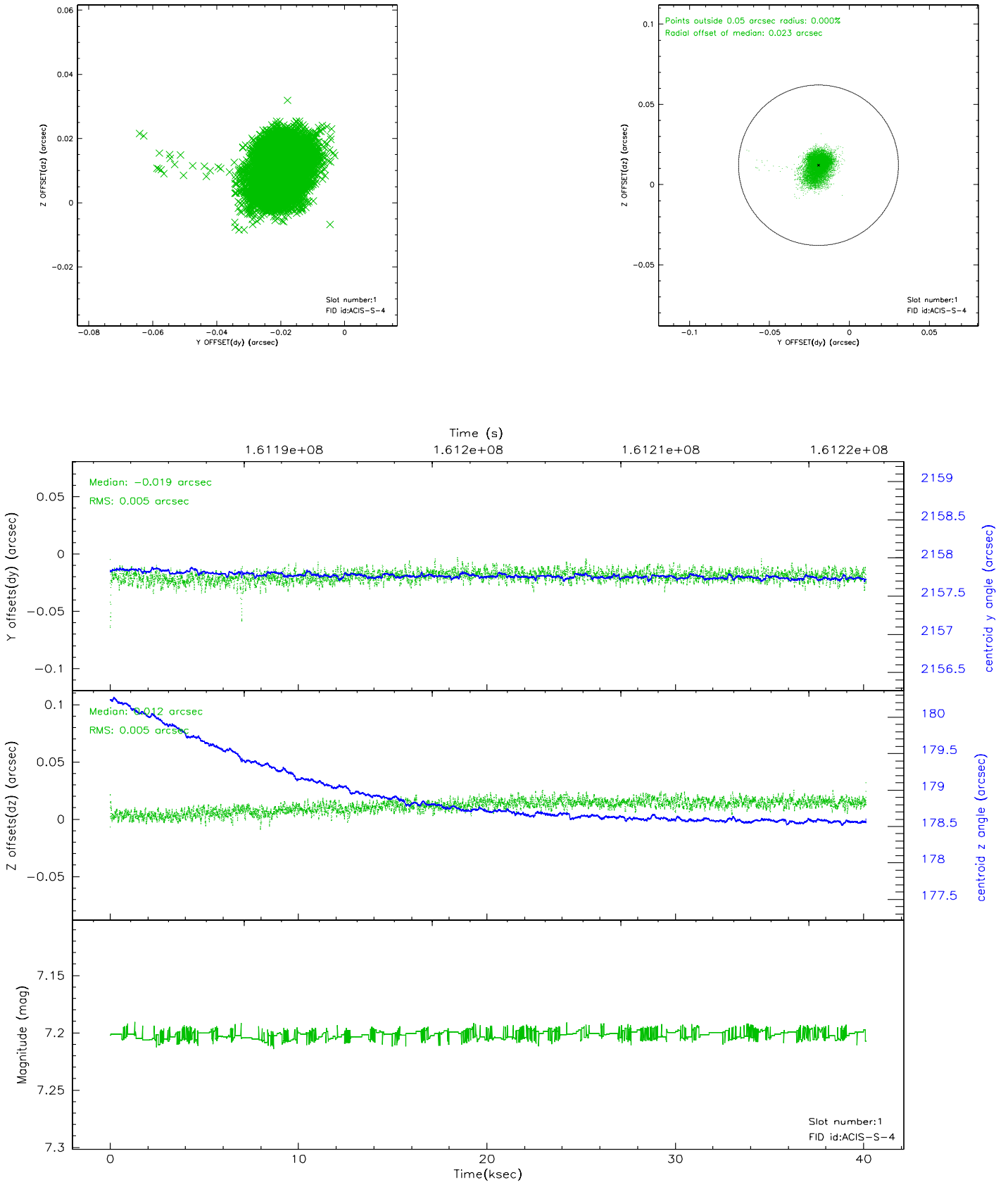


## 2.5 FID Slots

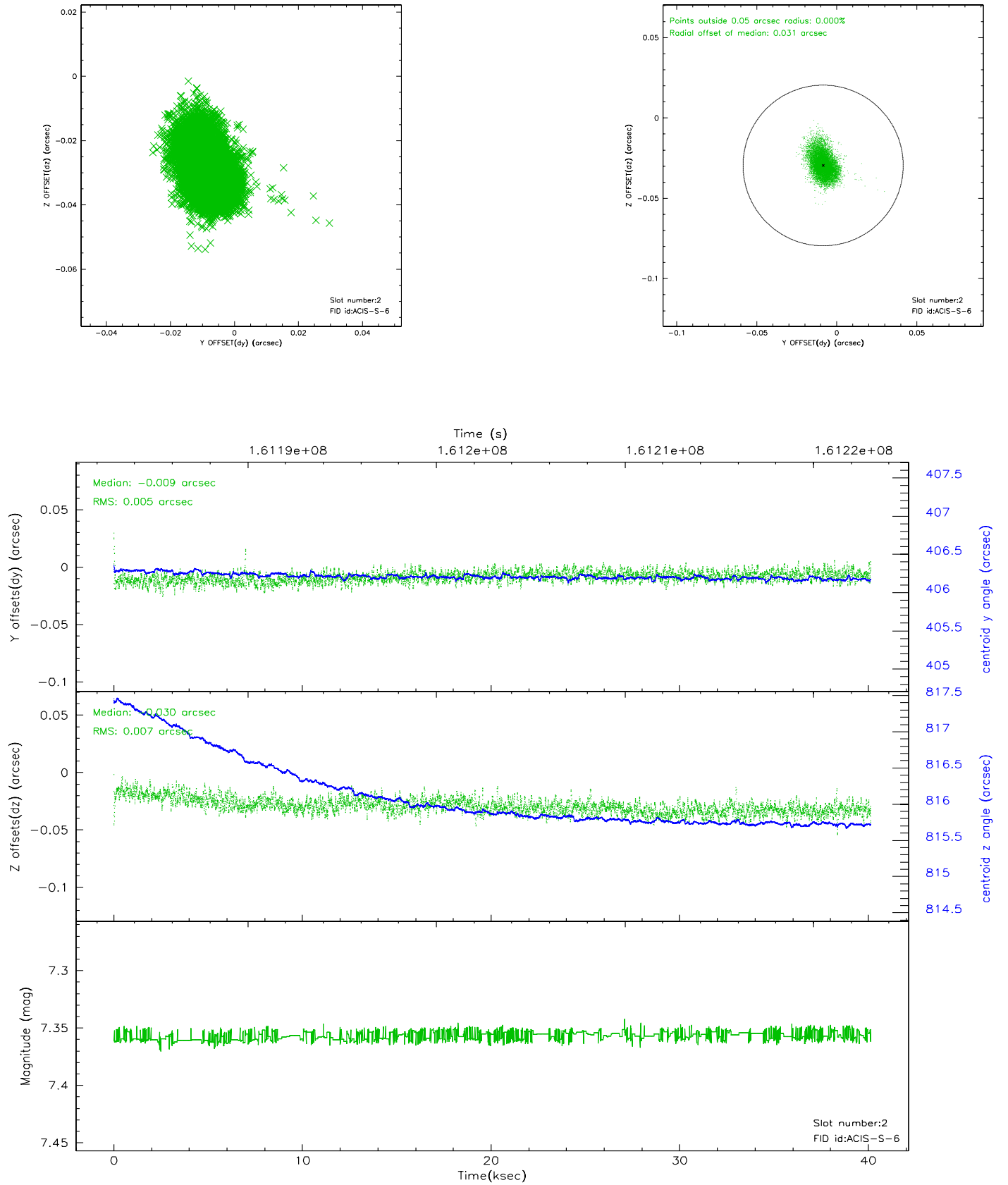
### 2.5.1 Slot 0



## 2.5.2 Slot 1

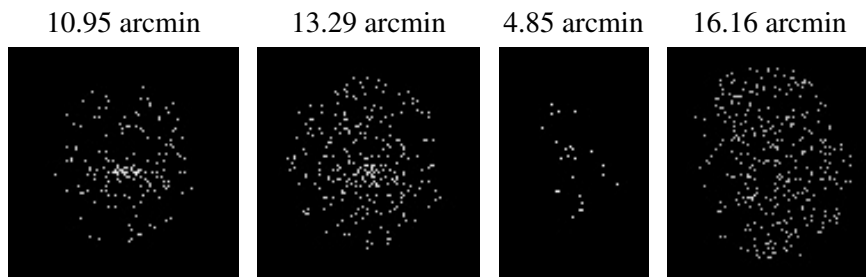


### 2.5.3 Slot 2





### 3 Point Sources



## A Summary

### A.1 Status

V&V Scientist	Jen Lauer
V&V Date (YYYY-MM-DD)	2006.07.21
V&V Edition	1
V&V Disposition and Status	OK
V&V Charge Time	40.141

### A.2 Comments