

V&V Reference Report

L2 ASCDS Version : 8.4.5

Observation 3820 - L2 Version 3
Chandra X-Ray Center

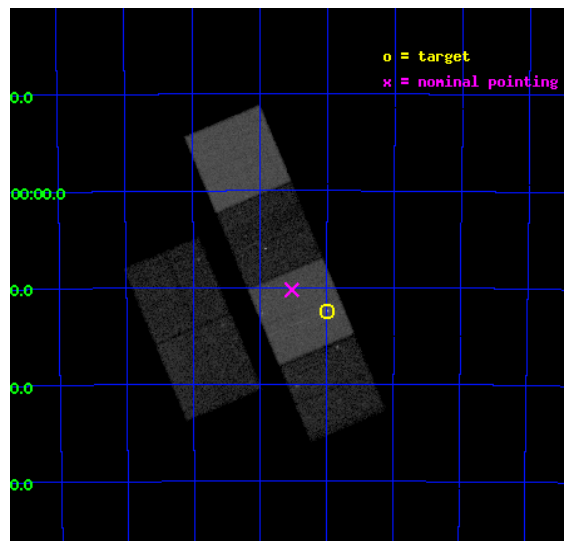
L2 Processing Date : Oct 19 2012

Contents

1	Front	2
2	OBI	3
2.1	OBI	3
2.1.1	Images	3
2.1.2	Bias	3
2.1.3	Parameters	4
2.1.4	Events	4
2.2	Compared Parameters	5
2.3	Aspect	6
2.4	Star Slots	9
2.4.1	Slot 3	9
2.4.2	Slot 4	10
2.4.3	Slot 5	11
2.4.4	Slot 6	12
2.4.5	Slot 7	13
2.5	FID Slots	14
2.5.1	Slot 0	14
2.5.2	Slot 1	15
2.5.3	Slot 2	16
A	Summary	17
A.1	Status	17
A.2	Comments	17

1 Front

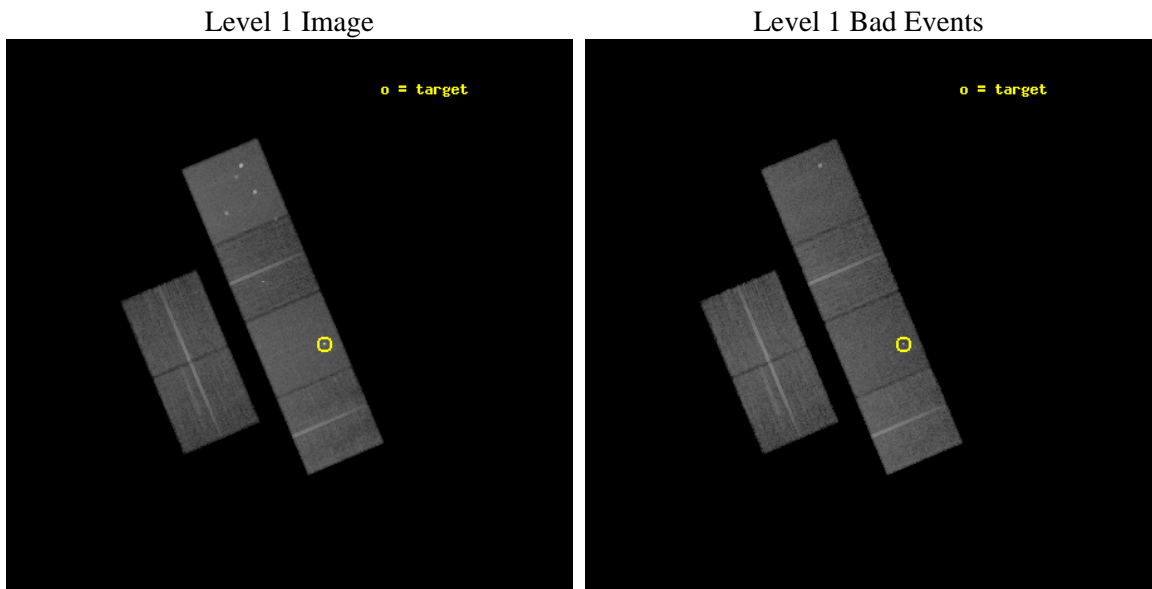
seq_num	400307	Sequence number
obs_id	3820	Observation id
title	QUIESCENT EMISSION FROM TRANSIENT ACCRETION-POWERED PULSARS	Propos
observer	PROF. LARS BILDSTEN	Principal investigator
object	4U 1145-619	Source name
dtcycle	0	
cycle	P	events from which exps? Prim/Second/Both
ra_targ	177.0	Observer's specified target RA [deg]
dec_targ	-62.206917	Observer's specified target Dec [deg]
ra_nom	177.13085343838	Nominal RA [deg]
dec_nom	-62.171075072415	Nominal Dec [deg]
roll_nom	67.194120348168	Nominal Roll [deg]
revision	3	Processing version of data
ontime	22962.322322488	Sum of GTIs [s]
livetime	22671.55957099	Livetime [s]
ontime2	22962.363362491	Sum of GTIs [s]
ontime3	22962.199202478	Sum of GTIs [s]
ontime5	22962.281282485	Sum of GTIs [s]
ontime6	22962.240242481	Sum of GTIs [s]
ontime7	22962.322322488	Sum of GTIs [s]
ontime8	22962.158162504	Sum of GTIs [s]
l2events	256726	Number of level 2 events



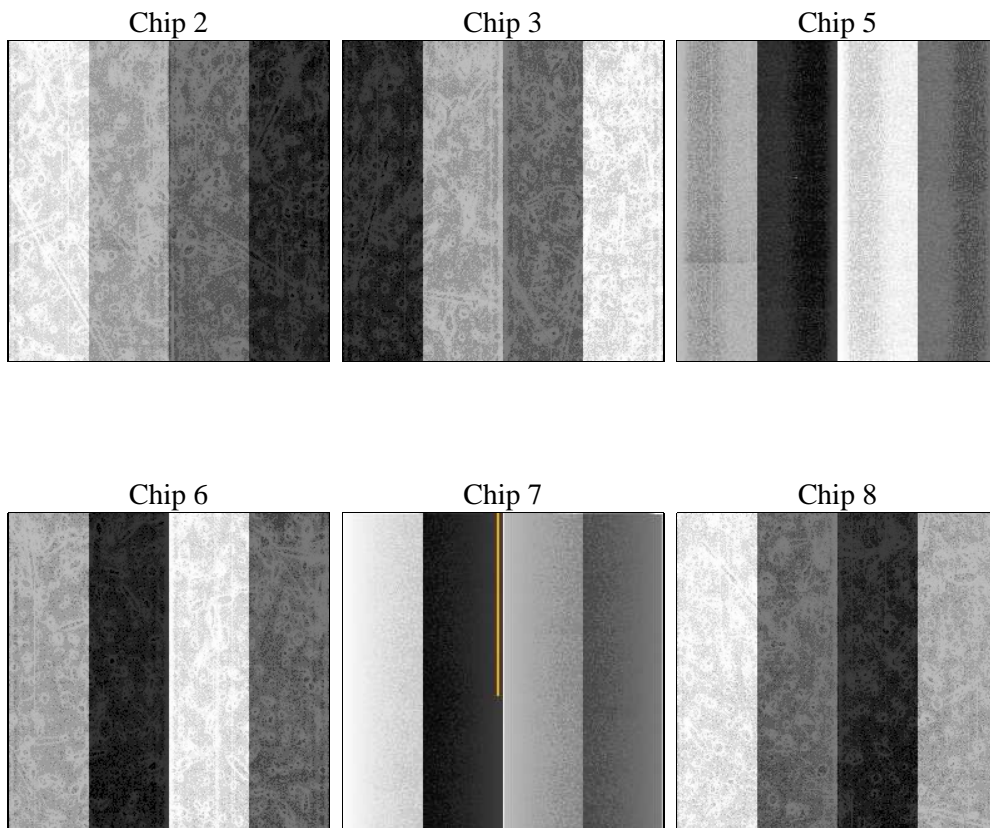
2 OBI

2.1 OBI

2.1.1 Images



2.1.2 Bias



2.1.3 Parameters

obi_num	1	Obi number	sched_exp_time	23000.000000	[s] Scheduled observation exposure time
ascdsver	8.4.5	Processing system revision	ontime	22962.322322488	Sum of GTIs [s]
caldsver	4.5.2	 	ontime2	22962.363362491	Sum of GTIs [s]
date	2012-10-19T14:24:19	Date and time of file creation	ontime3	22962.199202478	Sum of GTIs [s]
revision	3	Processing version of data	ontime5	22962.281282485	Sum of GTIs [s]
			ontime6	22962.240242481	Sum of GTIs [s]
			ontime7	22962.322322488	Sum of GTIs [s]
			ontime8	22962.158162504	Sum of GTIs [s]
			l1events	1052766	Number of level 1 events

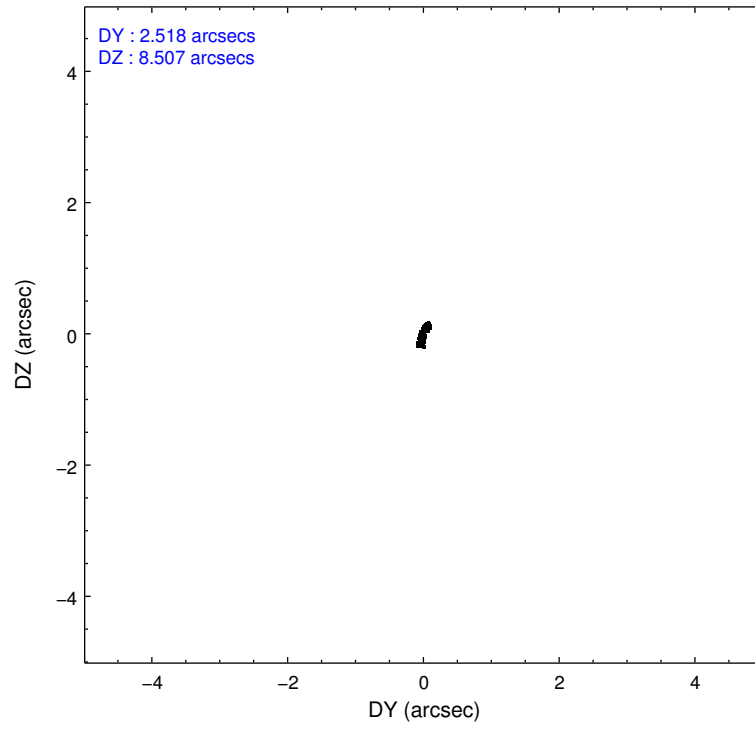
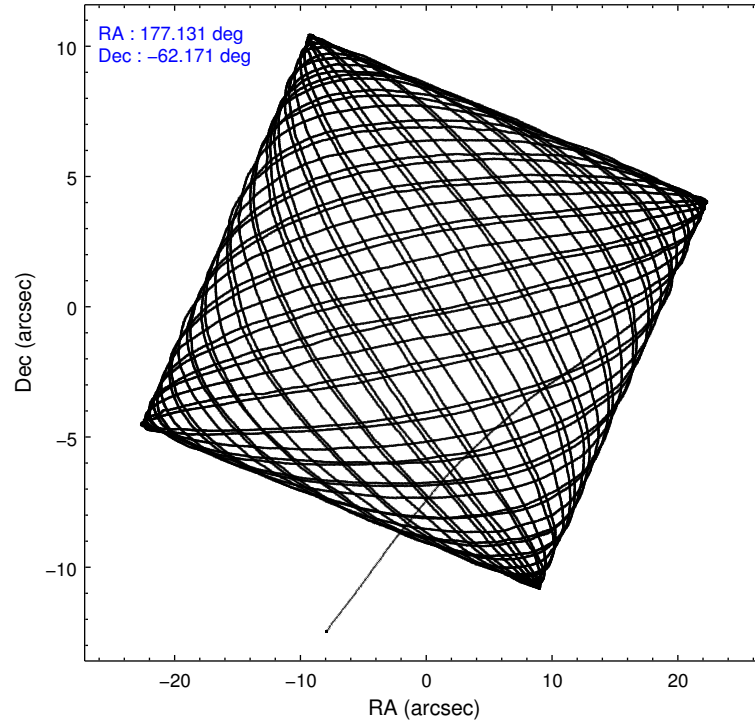
2.1.4 Events

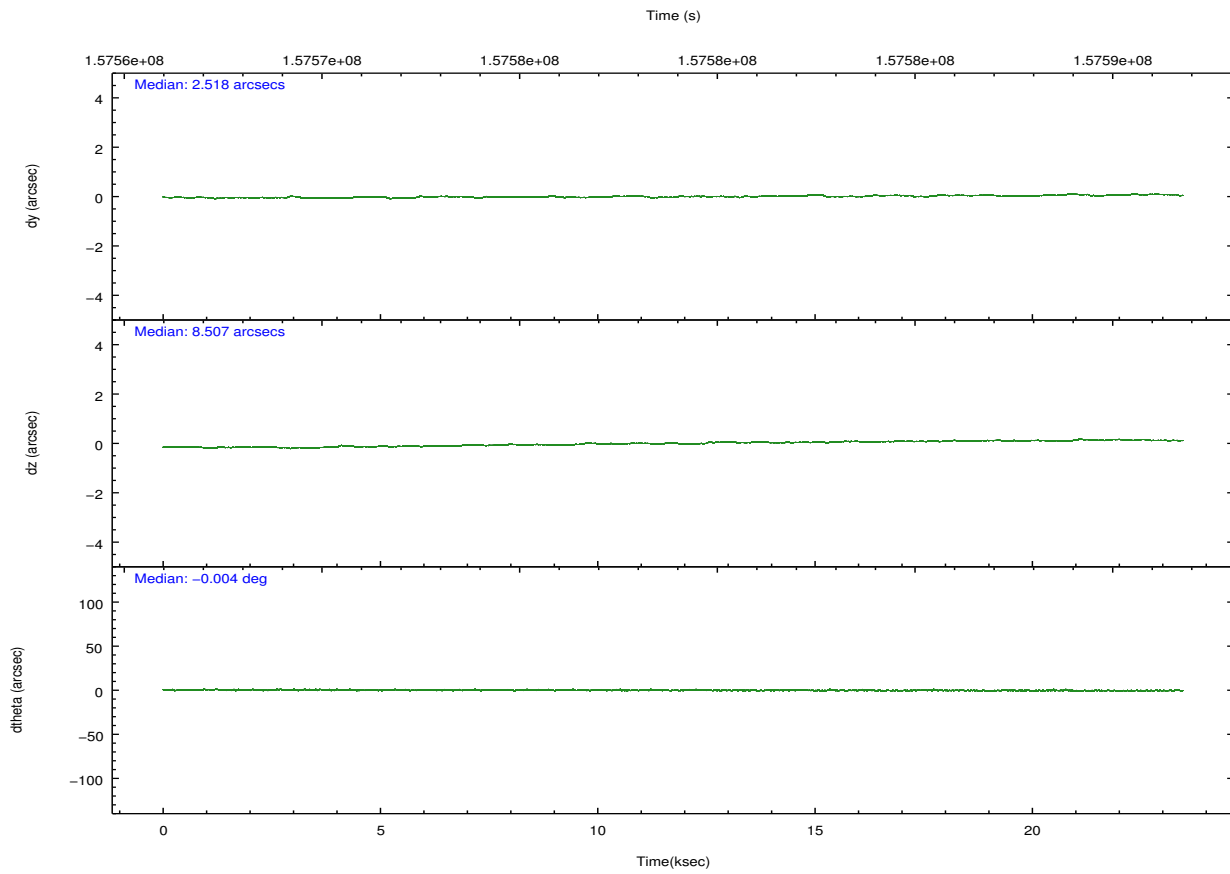
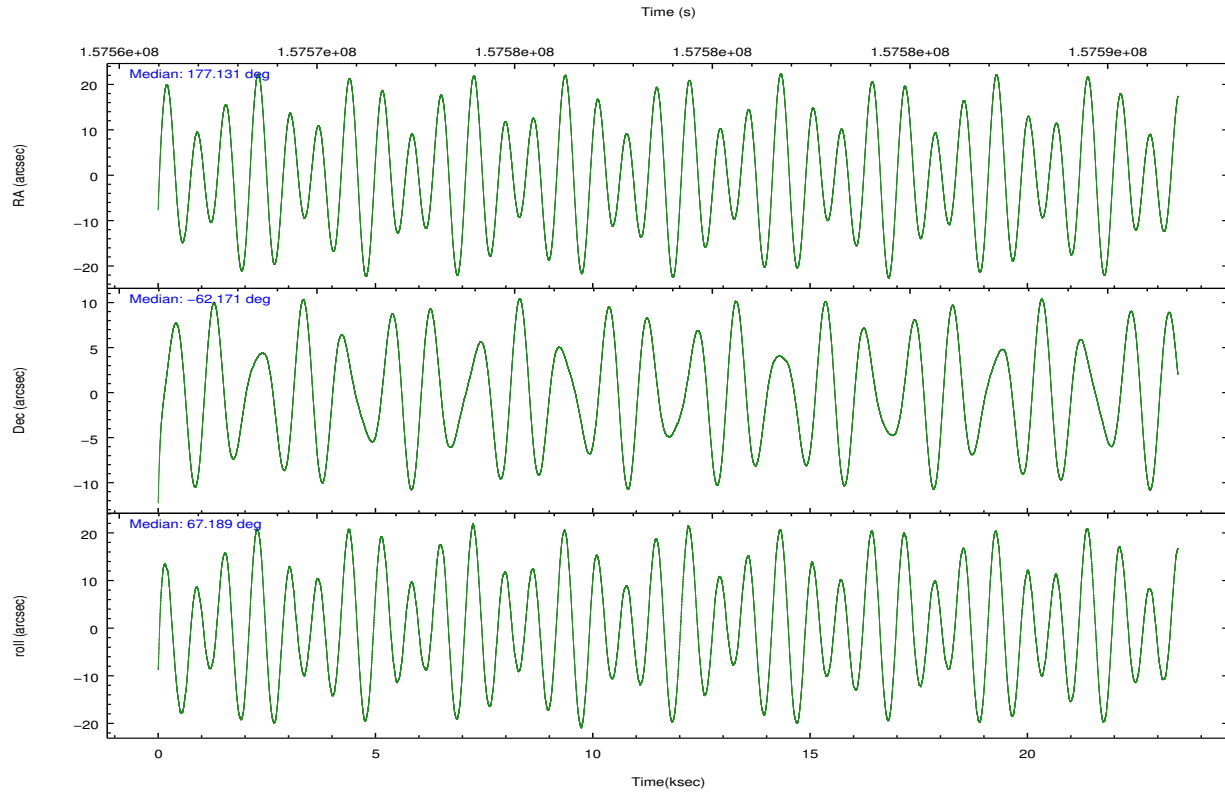
	ccd 2	ccd 3	ccd 5	ccd 6	ccd 7	ccd 8		ccd 2	ccd 3	ccd 5	ccd 6	ccd 7	ccd 8
level 1 events	148414	140691	218661	145032	217121	182847	grade 0 events	9240	10109	14658	8159	11710	12935
rejected events	129669	121041	114776	126448	117383	143805		6%	7%	6%	5%	5%	7%
rejected %	87%	86%	52%	87%	54%	78%	grade 1 events	93	91	280	66	805	101
								0%	0%	0%	0%	0%	0%
							grade 2 events	3474	3237	30973	3593	20711	8357
								2%	2%	14%	2%	9%	4%
							grade 3 events	1713	1697	4055	1719	9466	3988
								1%	1%	1%	1%	4%	2%
							grade 4 events	1661	1753	3825	1659	9471	3717
								1%	1%	1%	1%	4%	2%
							grade 5 events	5597	6122	15596	6285	19900	8404
								3%	4%	7%	4%	9%	4%
							grade 6 events	2659	2854	50390	3456	48389	10060
								1%	2%	23%	2%	22%	5%
							grade 7 events	123977	114828	98884	120095	96669	135285
								83%	81%	45%	82%	44%	73%

2.2 Compared Parameters

Parameter	Planned	Actual	Parameter	Planned	Actual
Instrument	ACIS	ACIS	Obspar format version number	7	7
Detector	ACIS-235678	ACIS-235678	Obspar file type	PREDICTED	ACTUAL
Grating	NONE	NONE	Obspar update status	NONE	UPDATED
Data mode	FAINT	FAINT	Number of optional ACIS chips dropped	0	0
Observation mode	POINTING	POINTING	On-chip summing requested	N	N
[deg] Pointing RA	177.138944	177.130853438378	Subarray requested	NONE	NONE
[deg] Pointing Dec	-62.198041	-62.17107507241455	Alternating exposures requested	N	N
[deg] Pointing Roll	67.044657	67.19412034816848	[s] Primary exposure time	0.000000	3.2
[mm] SIM focus pos	-0.684267	-0.6828225247311905			
[mm] SIM defocus	0	0.001444936568705701			
[mm] SIM translation stage pos	-190.132523	-190.1425803651734			
[mm] SIM translation stage offset	0	0.01005778216563158			
[s] Observation start time (MET)	157567615.184000	157566514.37143			
Observation start date	2002-12-29T16:45:51	2002-12-29T16:28:34			
[s] Observation end time (MET)	157590615.184000	157591217.38496			
Observation end date	2002-12-29T23:09:11	2002-12-29T23:20:17			
Read mode	TIMED	TIMED			

2.3 Aspect



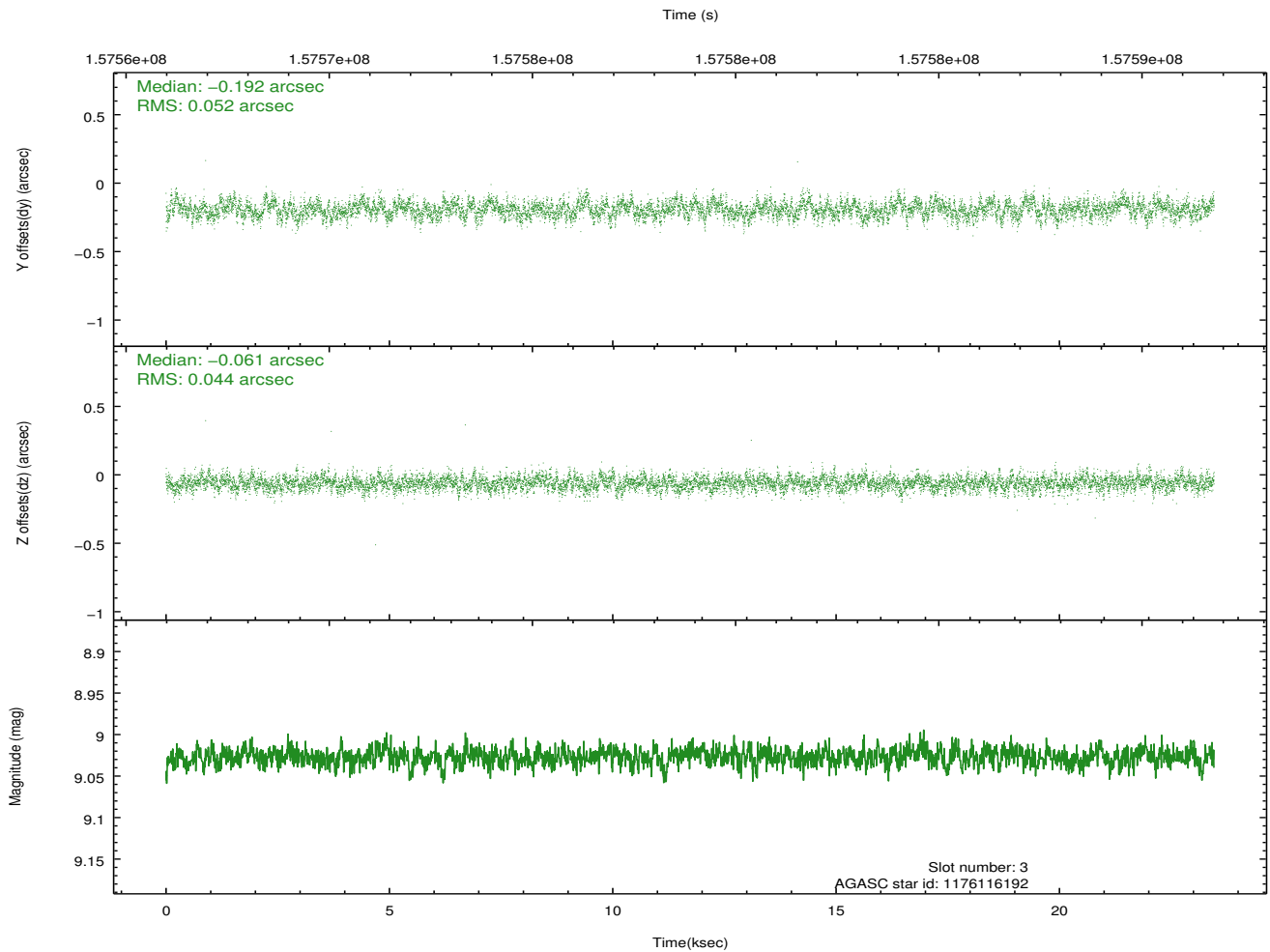
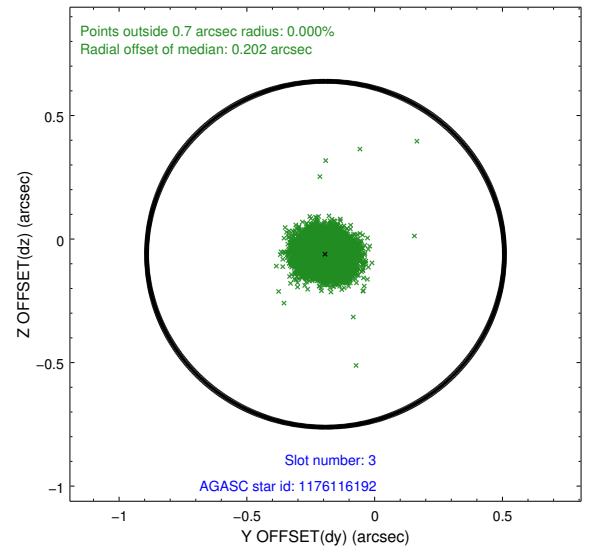
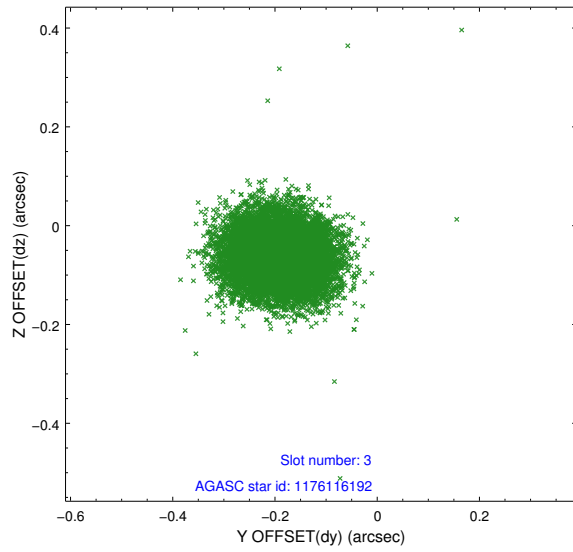


Slot Statistics

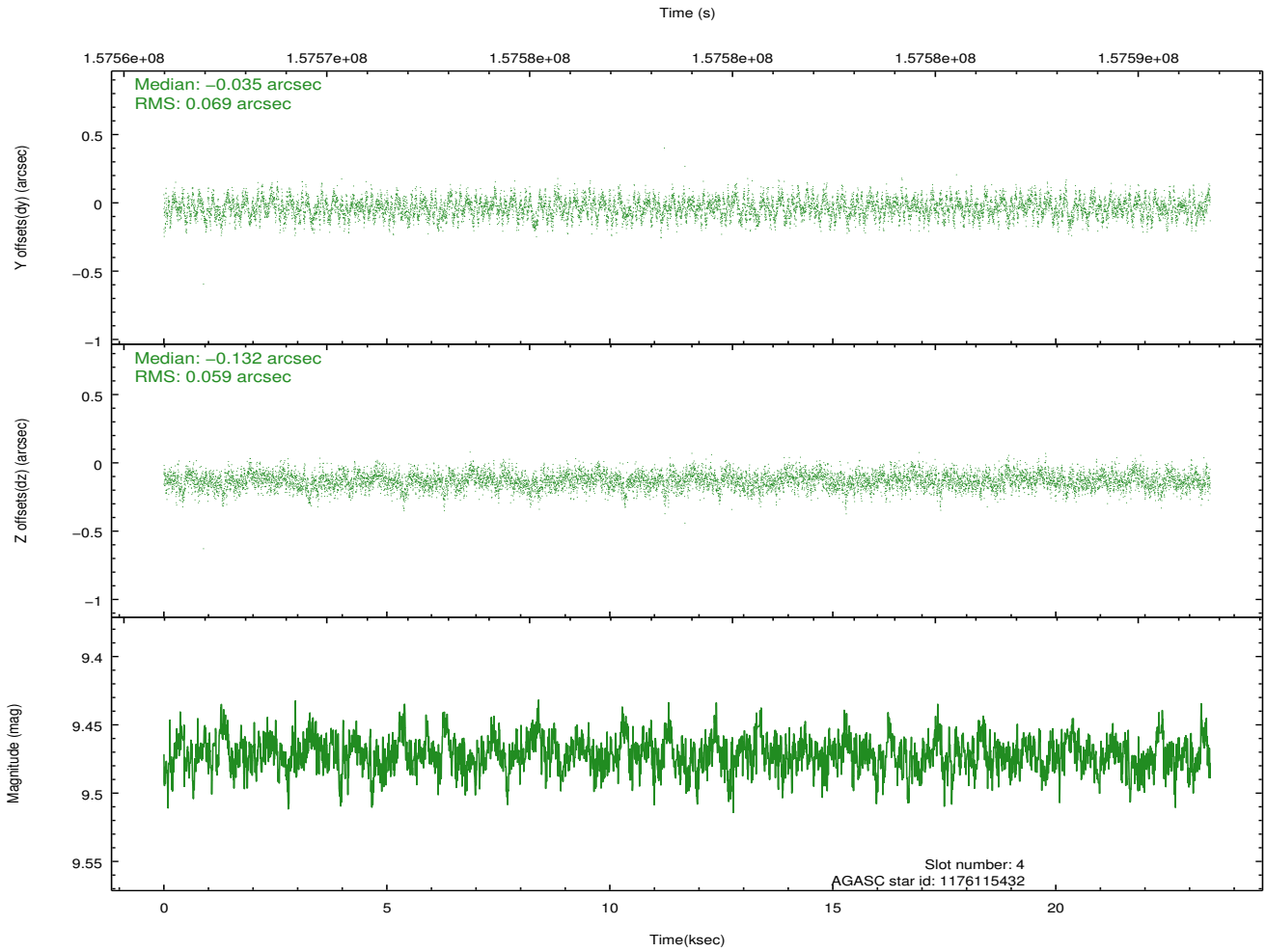
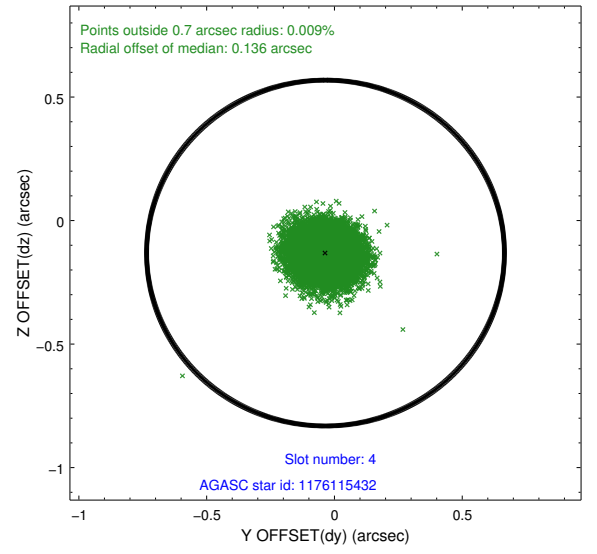
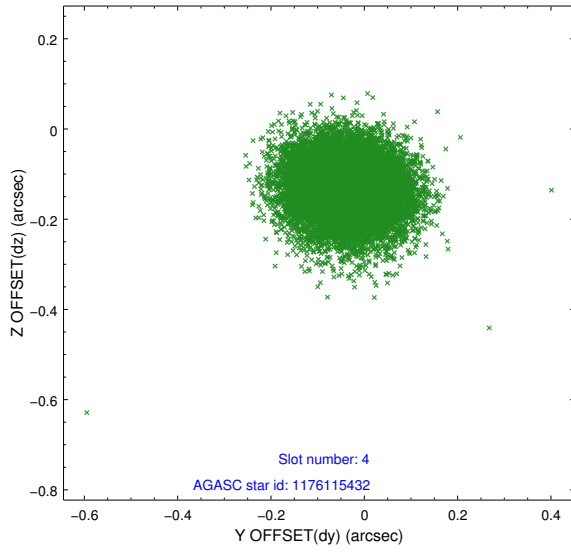
slot	status	id	mag	n_pts	med_dy	med_dz	dr1	dr2	ra	dec	mean_y	mean_z
0	FID	ACIS-S-1	7.19	5723	0.036	0.016	0.008	0.014	0.000000	0.000000	940.89	-1725.28
1	FID	ACIS-S-4	7.20	5723	-0.038	-0.025	0.008	0.013	0.000000	0.000000	2158.32	178.68
2	FID	ACIS-S-5	7.24	5724	-0.025	0.021	0.007	0.011	0.000000	0.000000	-1807.84	172.53
3	GUIDE	1176116192	9.03	11444	-0.192	-0.061	0.073	0.117	176.825689	-61.484410	2154.22	1497.63
4	GUIDE	1176115432	9.47	11441	-0.035	-0.132	0.098	0.154	176.273687	-61.517298	1668.20	2320.21
5	GUIDE	1176527440	9.39	11447	0.157	-0.112	0.098	0.161	175.601918	-62.576416	-2275.85	1803.55
6	GUIDE	1176666632	9.21	11443	0.099	0.184	0.092	0.146	177.987151	-62.873813	-1705.44	-2234.02
7	GUIDE	1176706272	8.94	11440	-0.031	0.120	0.076	0.122	178.166215	-61.994614	1338.73	-1318.64

2.4 Star Slots

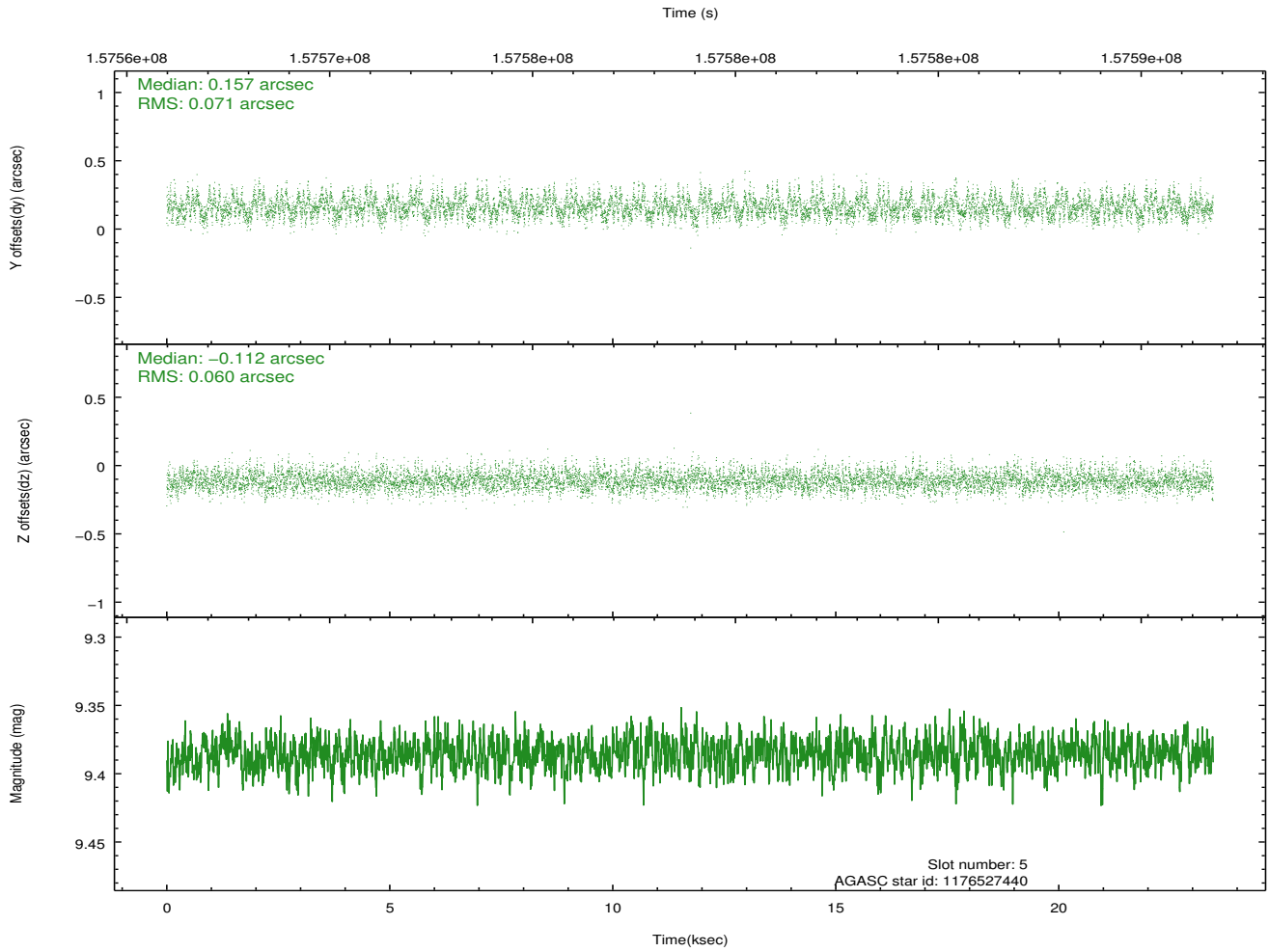
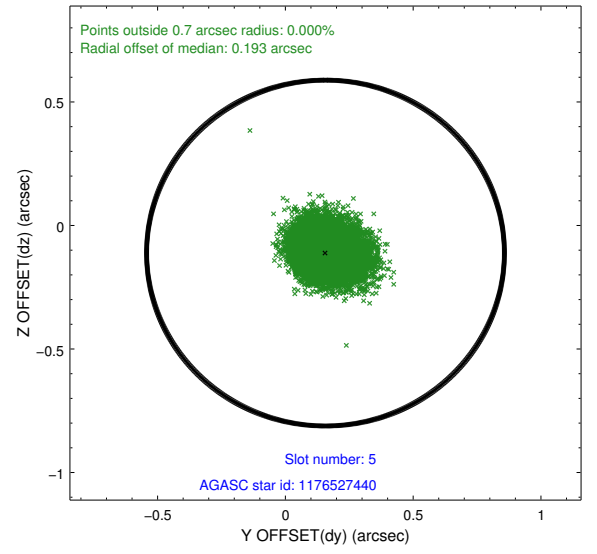
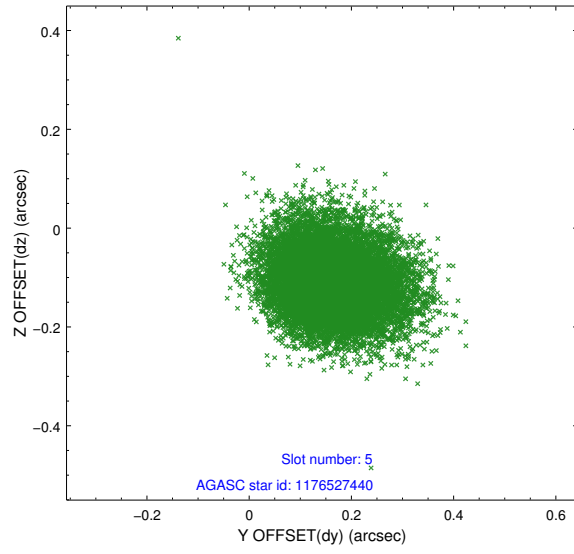
2.4.1 Slot 3



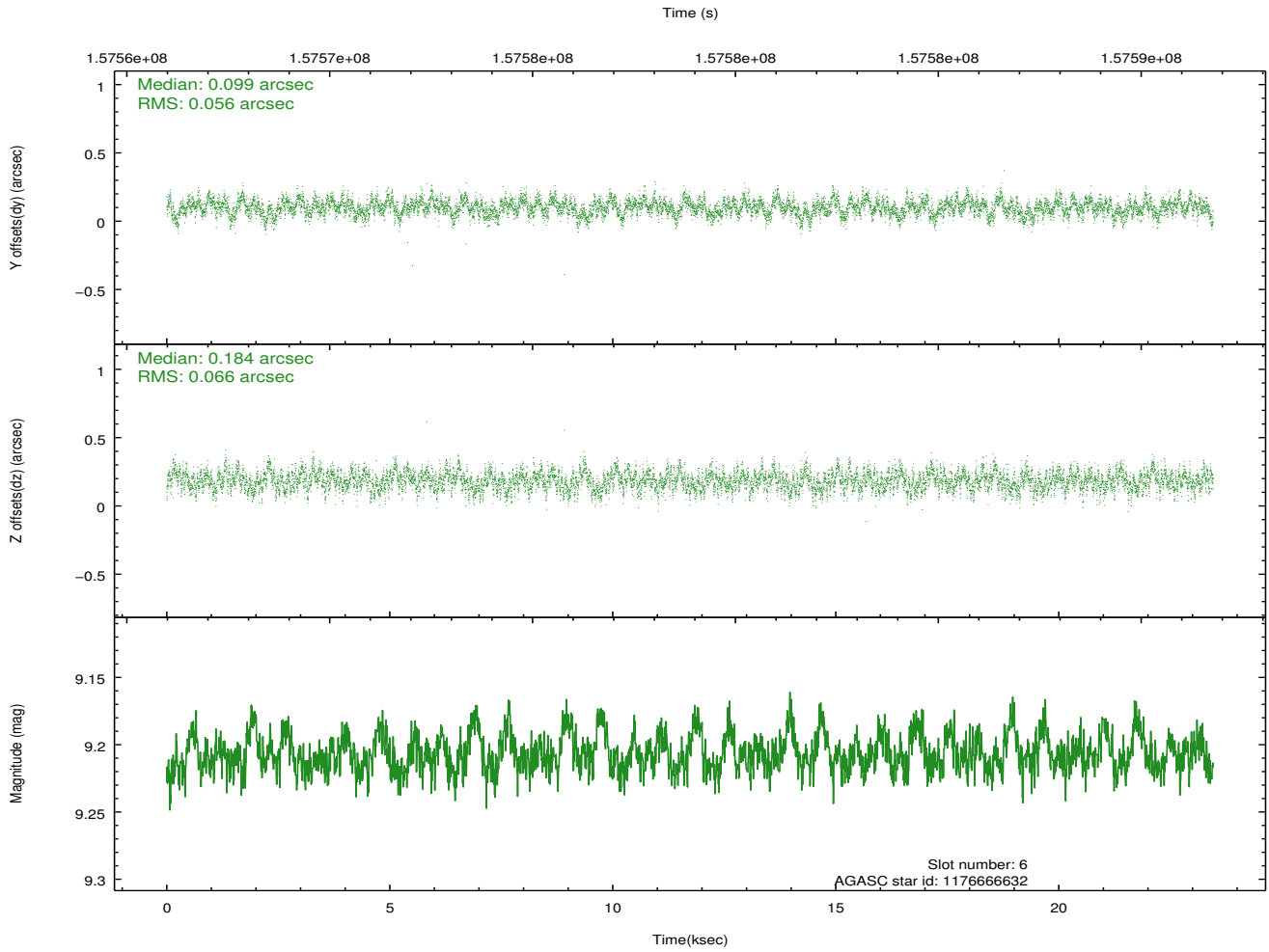
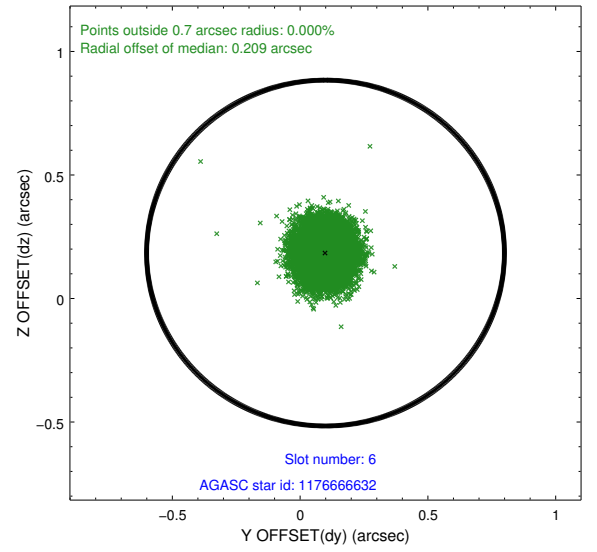
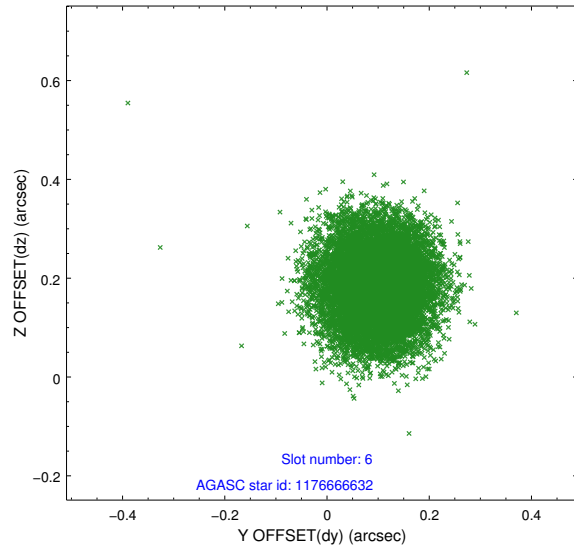
2.4.2 Slot 4



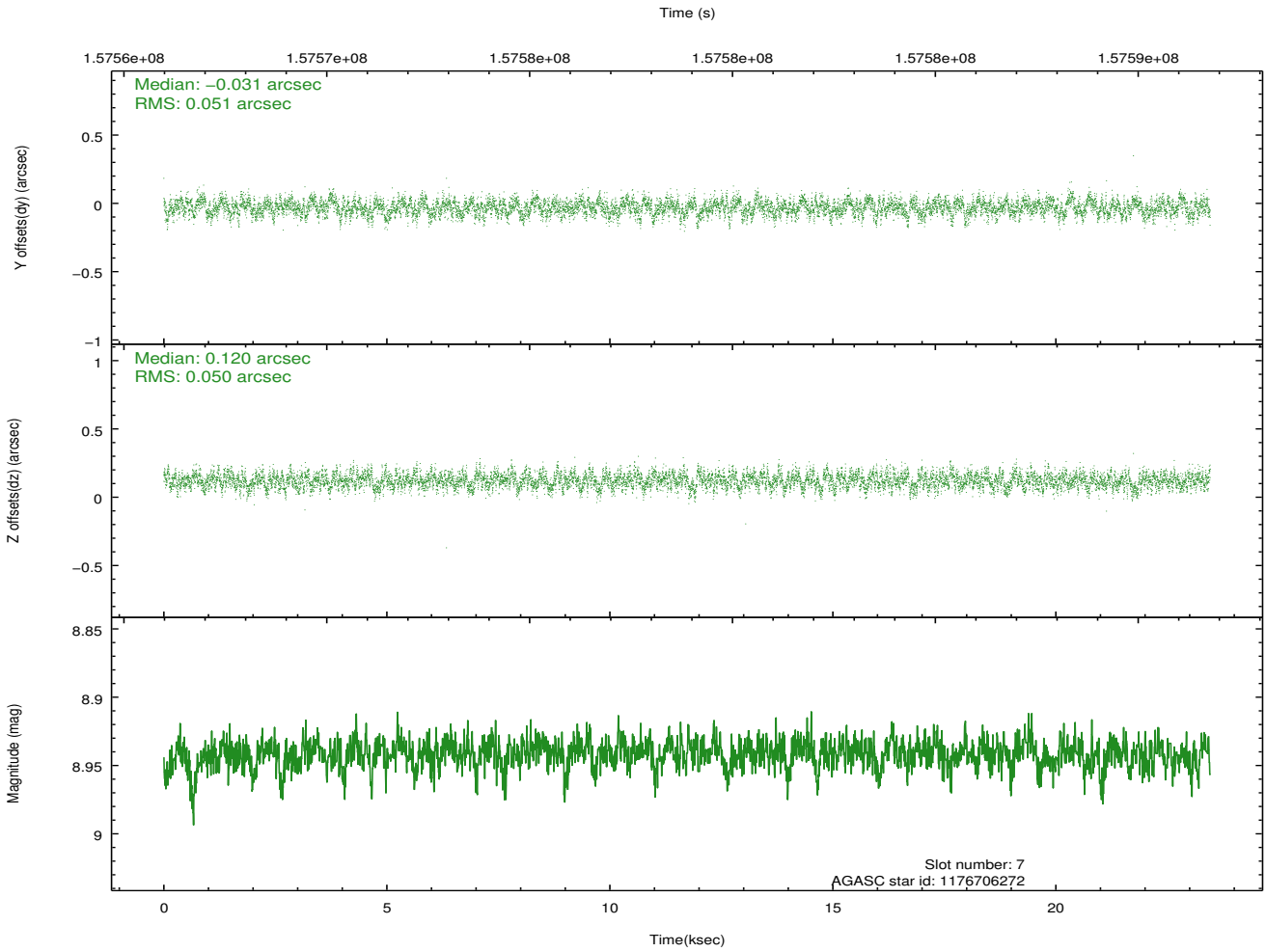
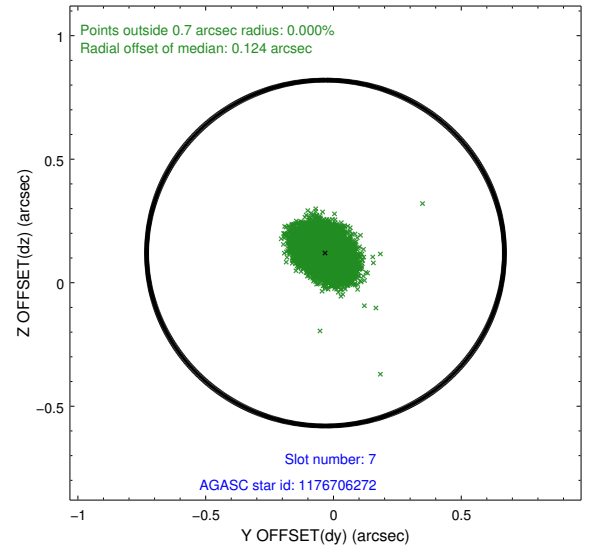
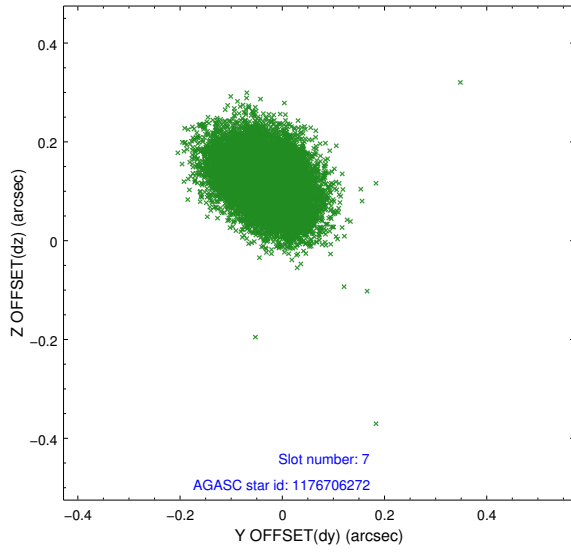
2.4.3 Slot 5



2.4.4 Slot 6

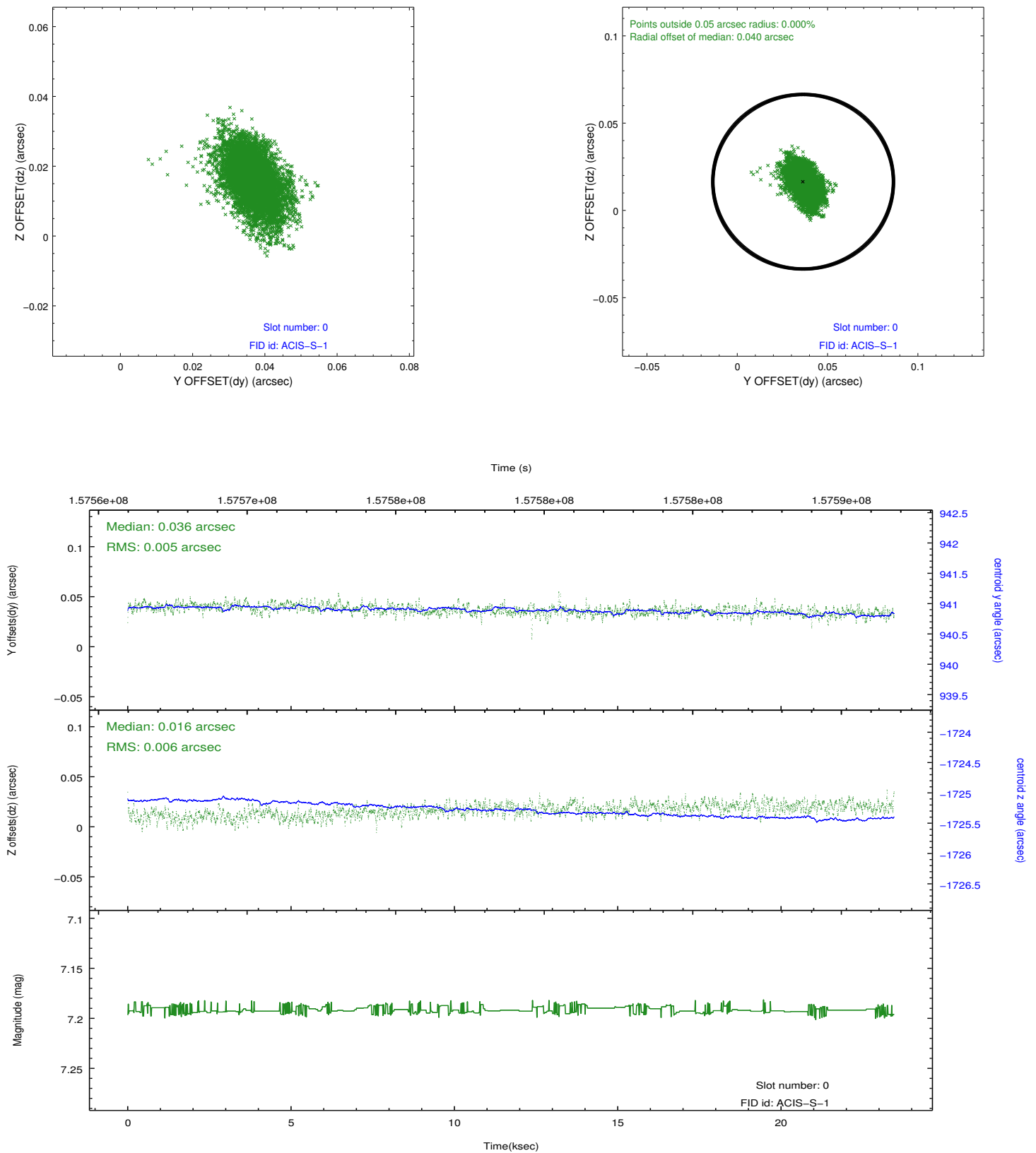


2.4.5 Slot 7

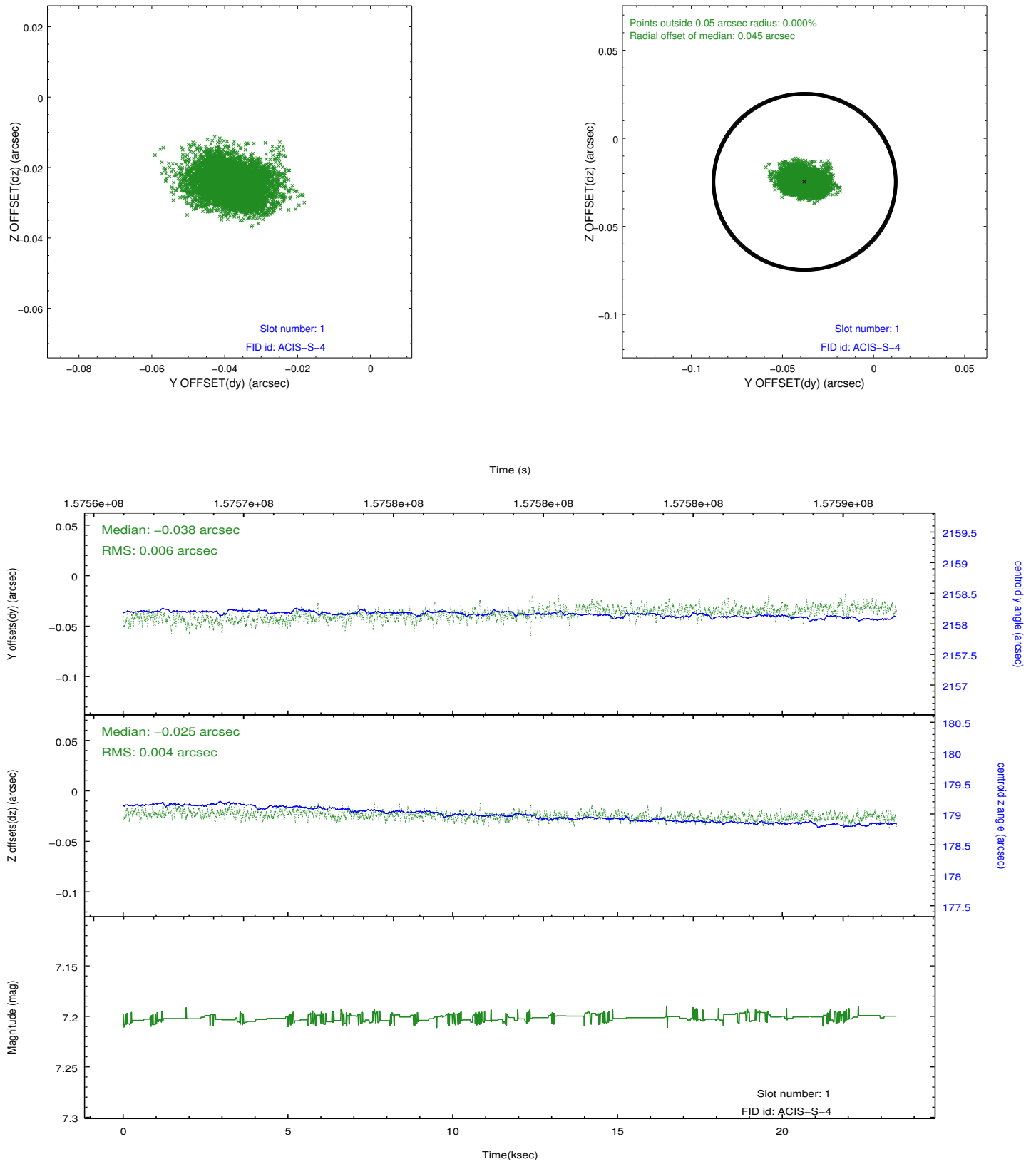


2.5 FID Slots

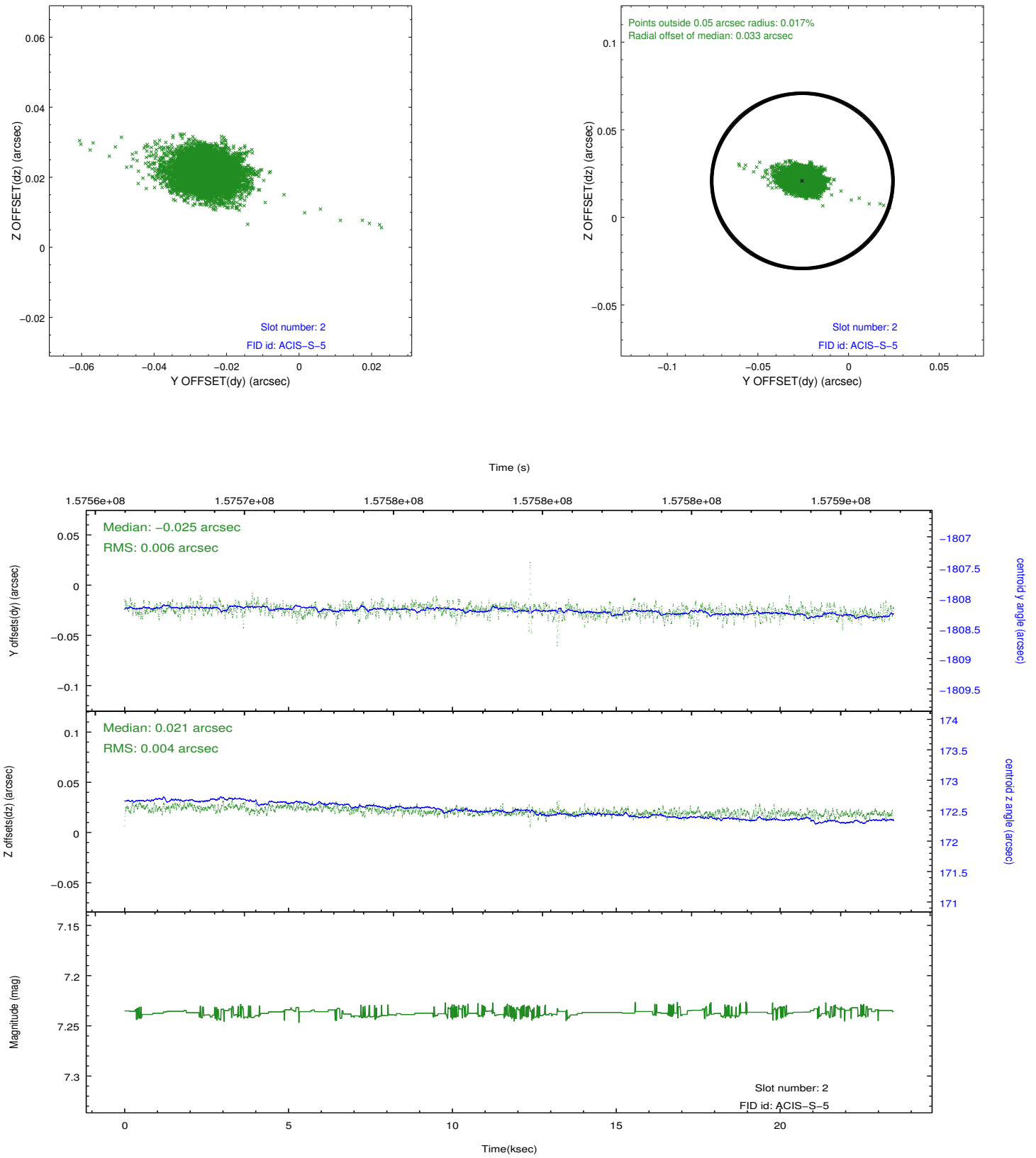
2.5.1 Slot 0



2.5.2 Slot 1



2.5.3 Slot 2



A Summary

A.1 Status

V&V Scientist	Jen Lauer
V&V Date (YYYY-MM-DD)	2012.10.31
V&V Edition	1
V&V Disposition and Status	OK
V&V Charge Time	22.963

A.2 Comments