

V&V Reference Report

L2 ASCDS Version : 7.6.8.1

Observation 3816 - L2 Version 3
Chandra X-Ray Center

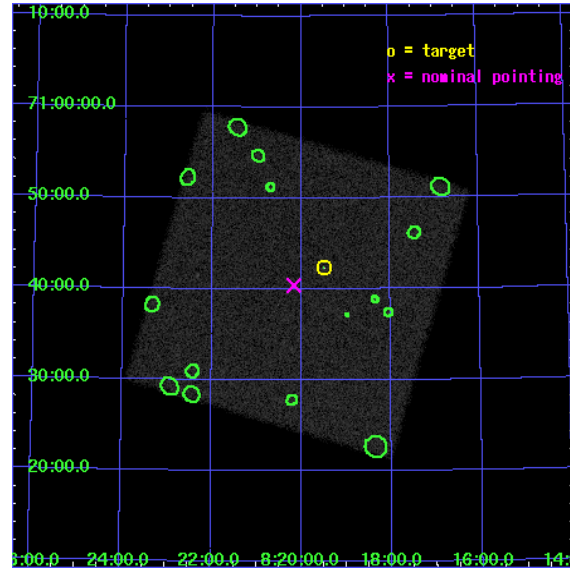
L2 Processing Date : Nov 23 2007

Contents

1	Front	2
2	OBI	3
2.1	OBI	3
2.1.1	Images	3
2.1.2	Parameters	4
2.1.3	Events	4
2.2	Compared Parameters	5
2.3	Aspect	6
2.4	Star Slots	9
2.4.1	Slot 3	9
2.4.2	Slot 4	10
2.4.3	Slot 5	11
2.4.4	Slot 6	12
2.4.5	Slot 7	13
2.5	FID Slots	14
2.5.1	Slot 0	14
2.5.2	Slot 1	15
2.5.3	Slot 2	16
3	Point Sources	17
A	Summary	18
A.1	Status	18
A.2	Comments	18

1 Front

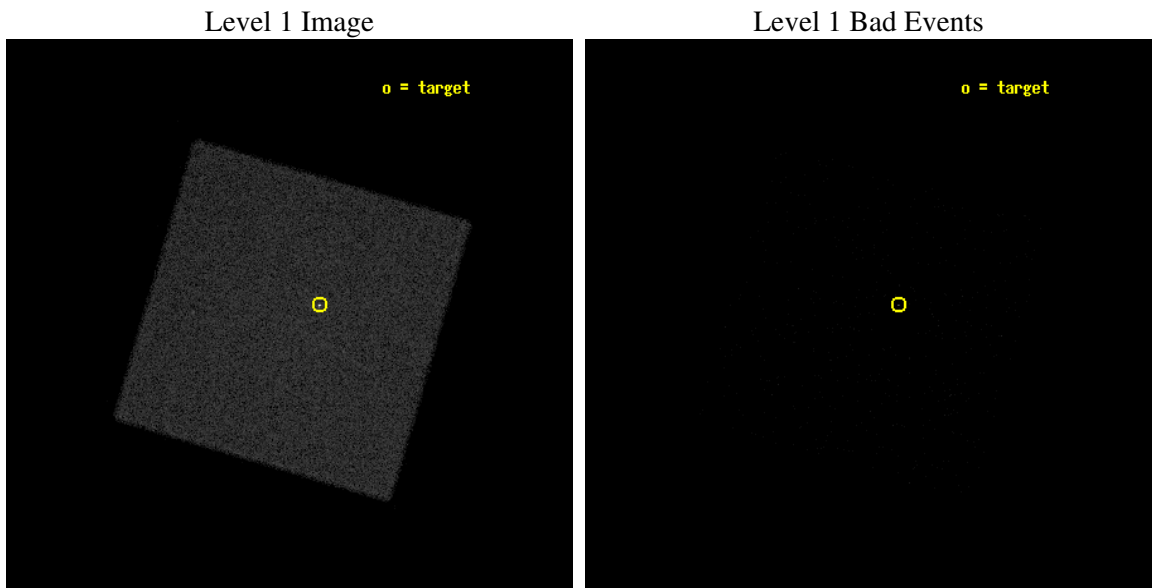
seq_num	400303
obs_id	3816
title	THE ULTRALUMINOUS X-RAY SOURCE IN HOLMBERG II
observer	Prof. Philip Kaaret
object	HOLMBERG II ULX
ra_targ	124.87375
dec_targ	70.705389
ra_nom	125.0405125854
dec_nom	70.673594450048
roll_nom	331.45399847163
revision	3
ontime	4894.6314583421
livetime	4869.7265168388
l2events	136037



2 OBI

2.1 OBI

2.1.1 Images



2.1.2 Parameters

obi_num	0
ascdsver	7.6.11.2
caldbver	3.4.1
date	2007-11-23T19:29:37
revision	3

sched_exp_time	5000.000000
ontime	4894.6314583421
l1events	248727

2.1.3 Events

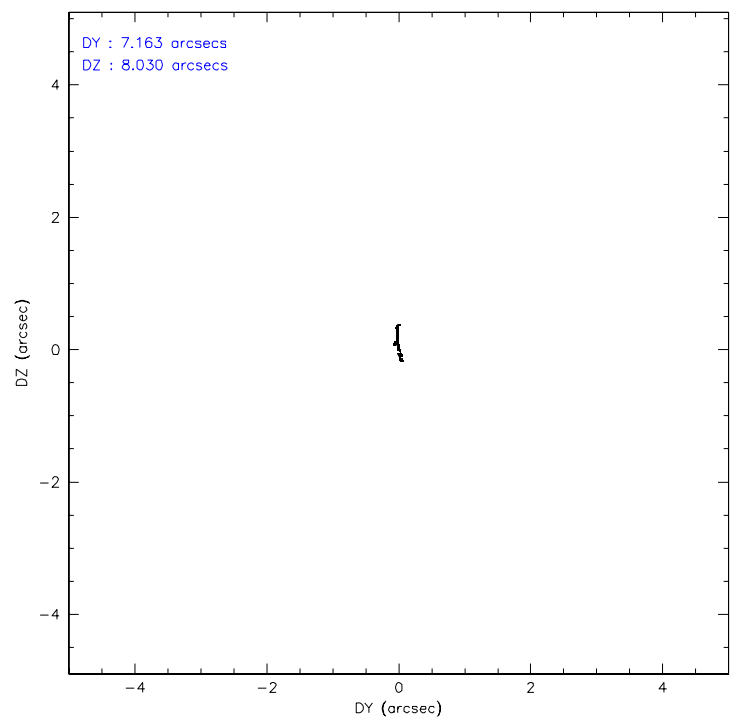
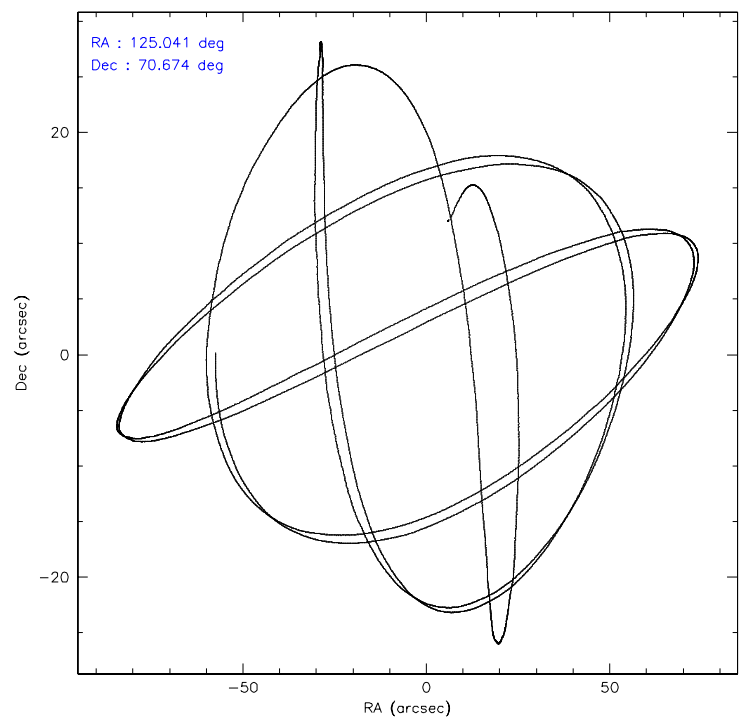
Level 1 Events

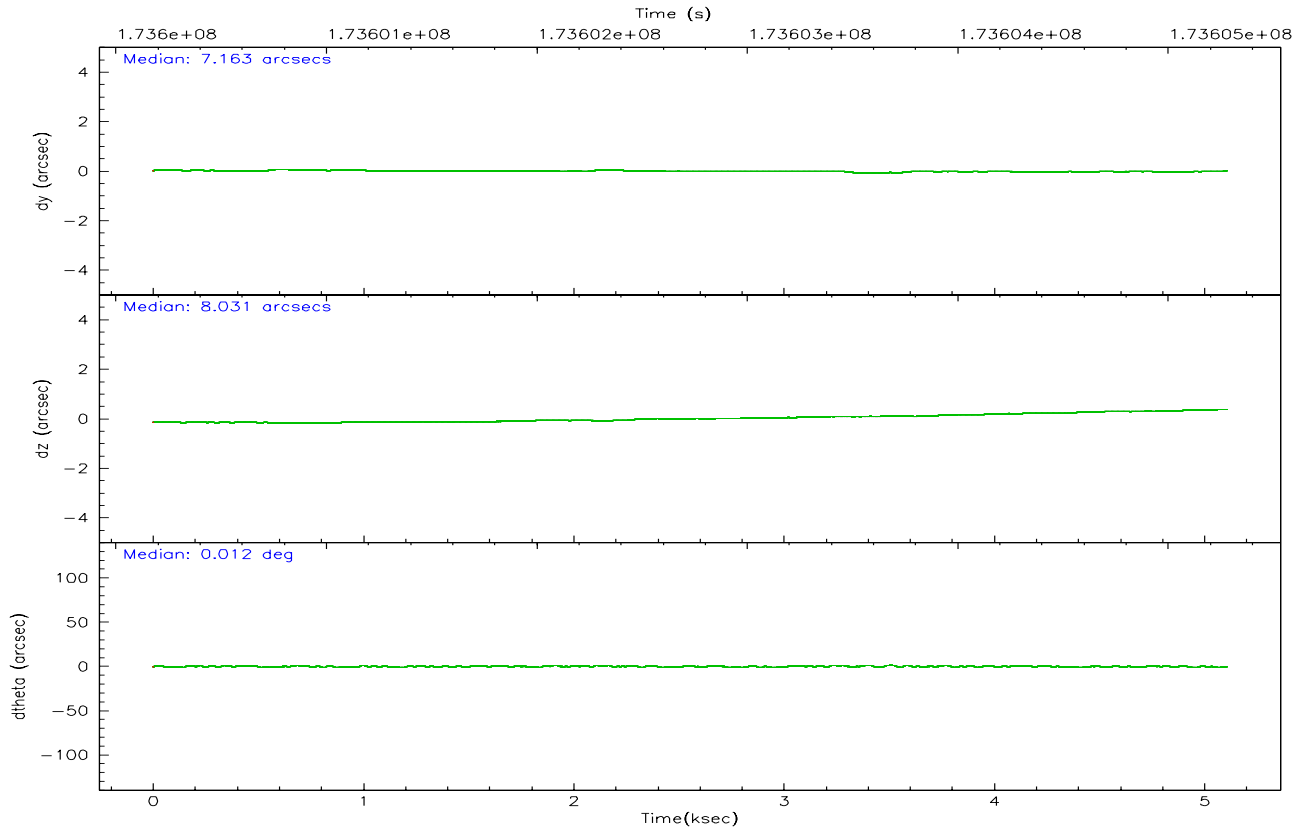
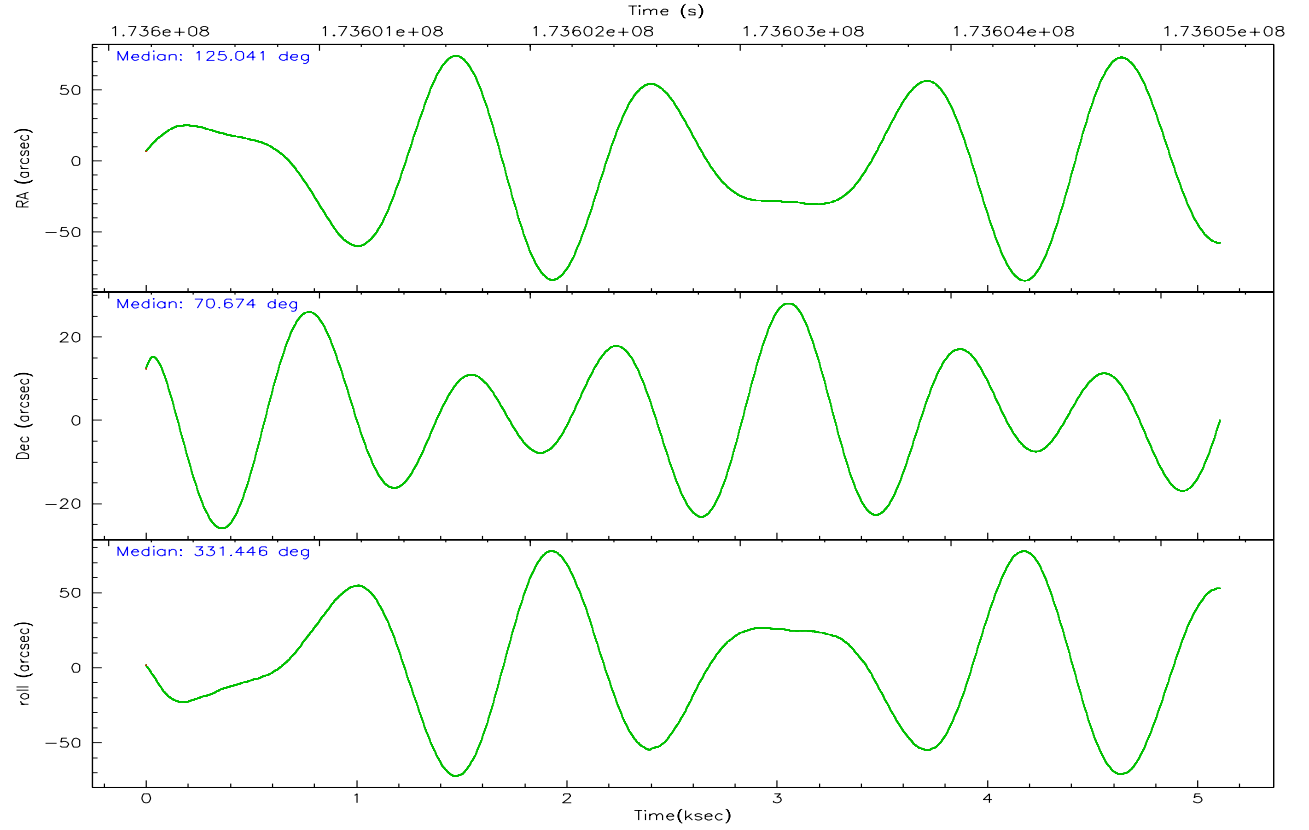
	segment 0
level 1 events	248727
rejected events	48621
rejected %	19%

2.2 Compared Parameters

Parameter	Planned	Actual	Parameter	Planned	Actual
Instrument	HRC	HRC	Obspar format version number	6	6
Detector	HRC-I	HRC-I	Obspar file type	PREDICTED	ACTUAL
Grating	NONE	NONE	Obspar update status	NONE	UPDATED
Data mode	OBSERVING	OBSERVING			
Observation mode	POINTING	POINTING			
Pointing RA	124.958185	125.0405125854028			
Pointing Dec	70.672532	70.67359445004845			
Pointing Roll	331.627169	331.4539984716256			
SIM focus pos (mm)	-1.040293	-1.038866356238299			
SIM defocus (mm)	0	0.001426264420575141			
SIM translation stage pos (mm)	126.985494	126.9829799899862			
SIM translation stage offset (mm)	0	0.002508901615314585			
Observation start time	173600284.184000	173598980.28514			
Observation start date	2003-07-03T06:17:00	2003-07-03T05:56:20			
Observation end time	173605284.184000	173606637.03546			
Observation end date	2003-07-03T07:40:20	2003-07-03T08:03:57			

2.3 Aspect



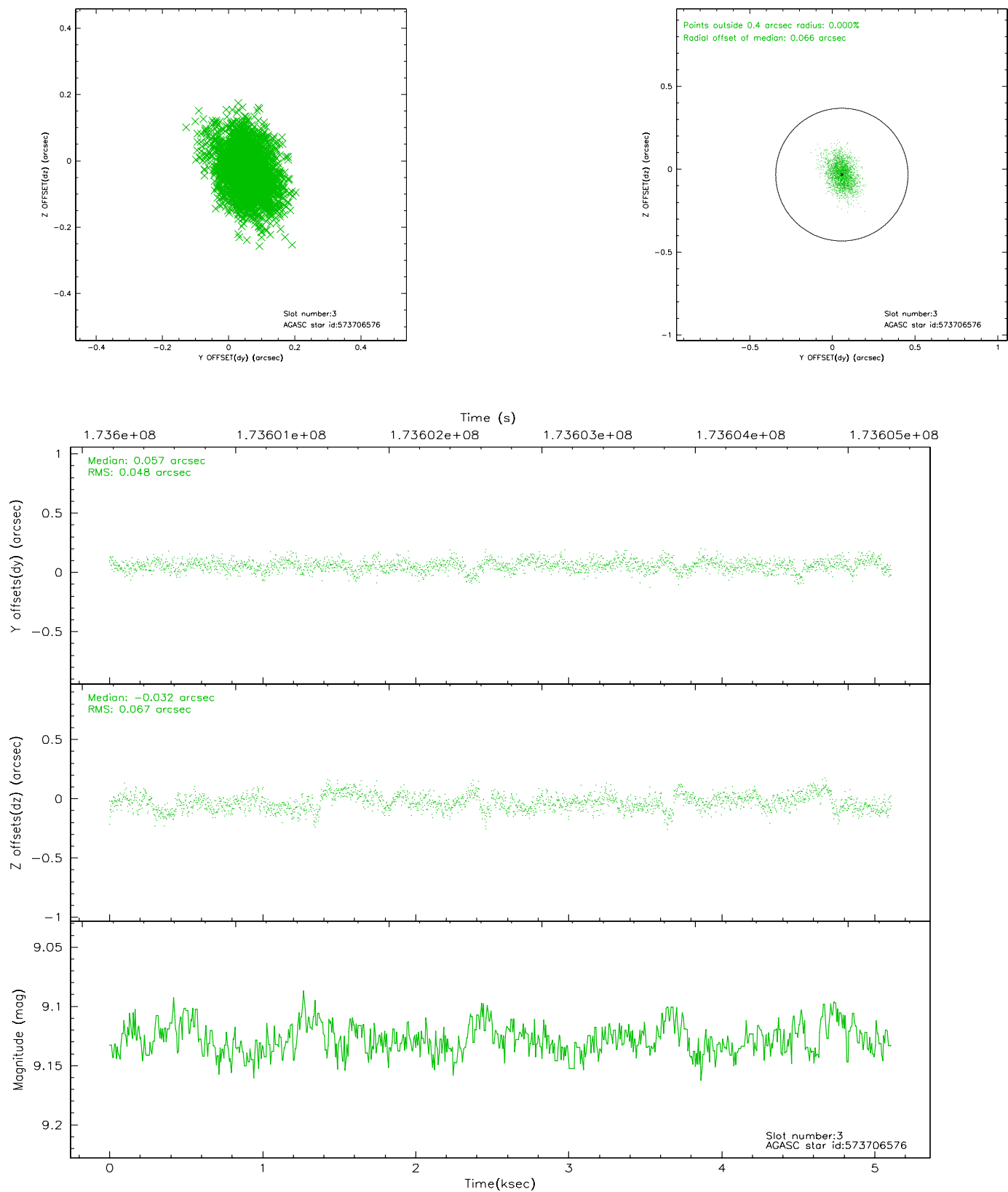


Slot Statistics

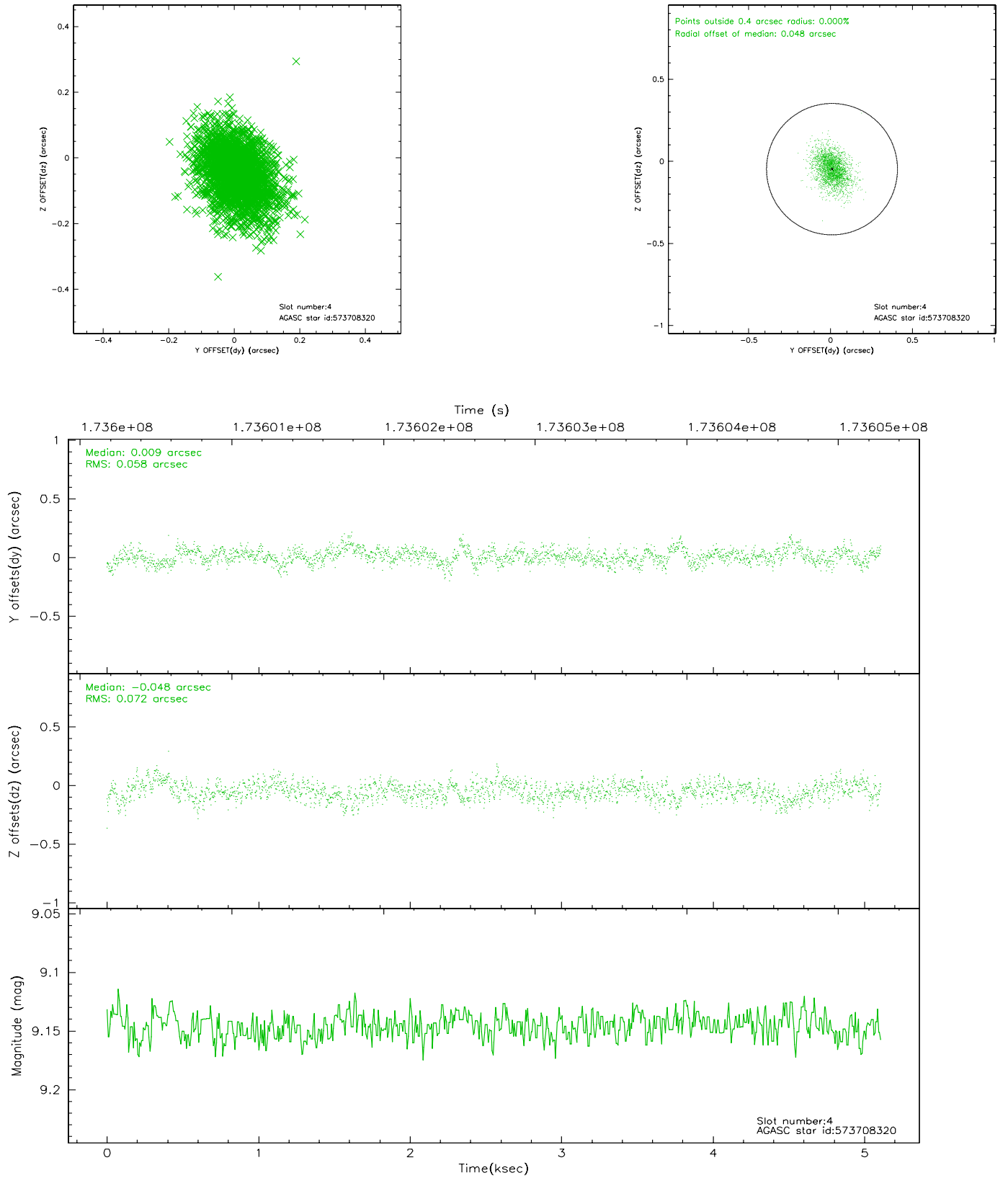
slot	status	id	mag	n_pts	med_dy	med_dz	dr1	dr2	ra	dec	mean_y	mean_z
0	FID	HRC-I-1	7.00	1247	0.054	0.006	0.009	0.016	0.000000	0.000000	-762.77	-1295.89
1	FID	HRC-I-3	7.08	1247	-0.048	-0.043	0.010	0.017	0.000000	0.000000	-1191.85	1007.61
2	FID	HRC-I-4	7.04	1247	0.108	-0.052	0.005	0.008	0.000000	0.000000	1279.24	1006.92
3	GUIDE	573706576	9.13	2492	0.057	-0.032	0.087	0.146	124.971812	70.209854	805.67	-1456.87
4	GUIDE	573708320	9.15	2493	0.009	-0.048	0.096	0.164	123.335431	70.465373	-1376.77	-1561.62
5	GUIDE	573717200	9.28	2491	0.012	0.029	0.102	0.161	126.642702	71.051410	1069.78	2159.87
6	GUIDE	573719824	8.78	2493	0.004	0.002	0.073	0.121	124.187277	71.200735	-1693.71	1254.51
7	GUIDE	573723816	6.81	2492	-0.078	0.053	0.054	0.087	124.391876	70.177108	236.53	-1893.71

2.4 Star Slots

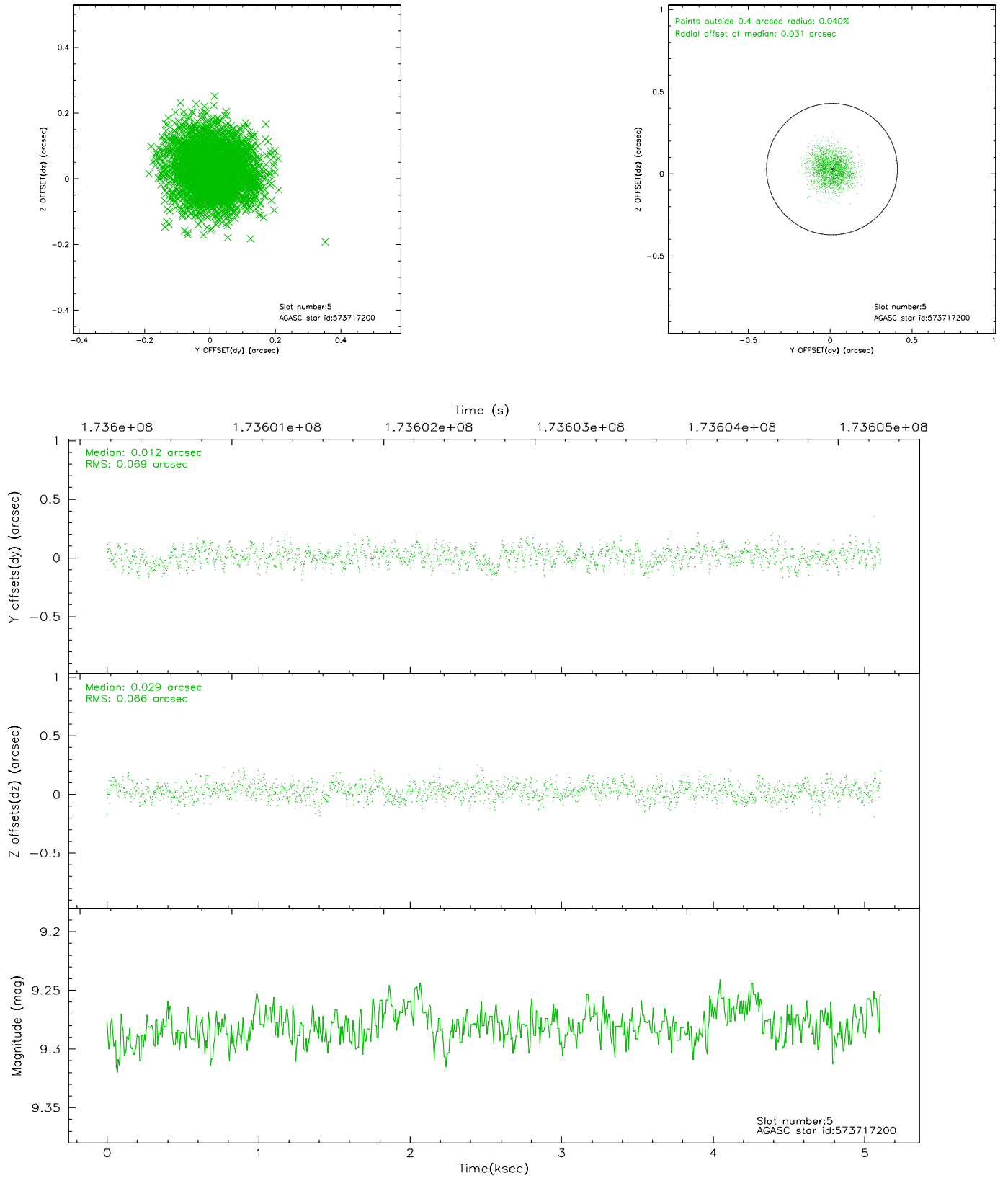
2.4.1 Slot 3



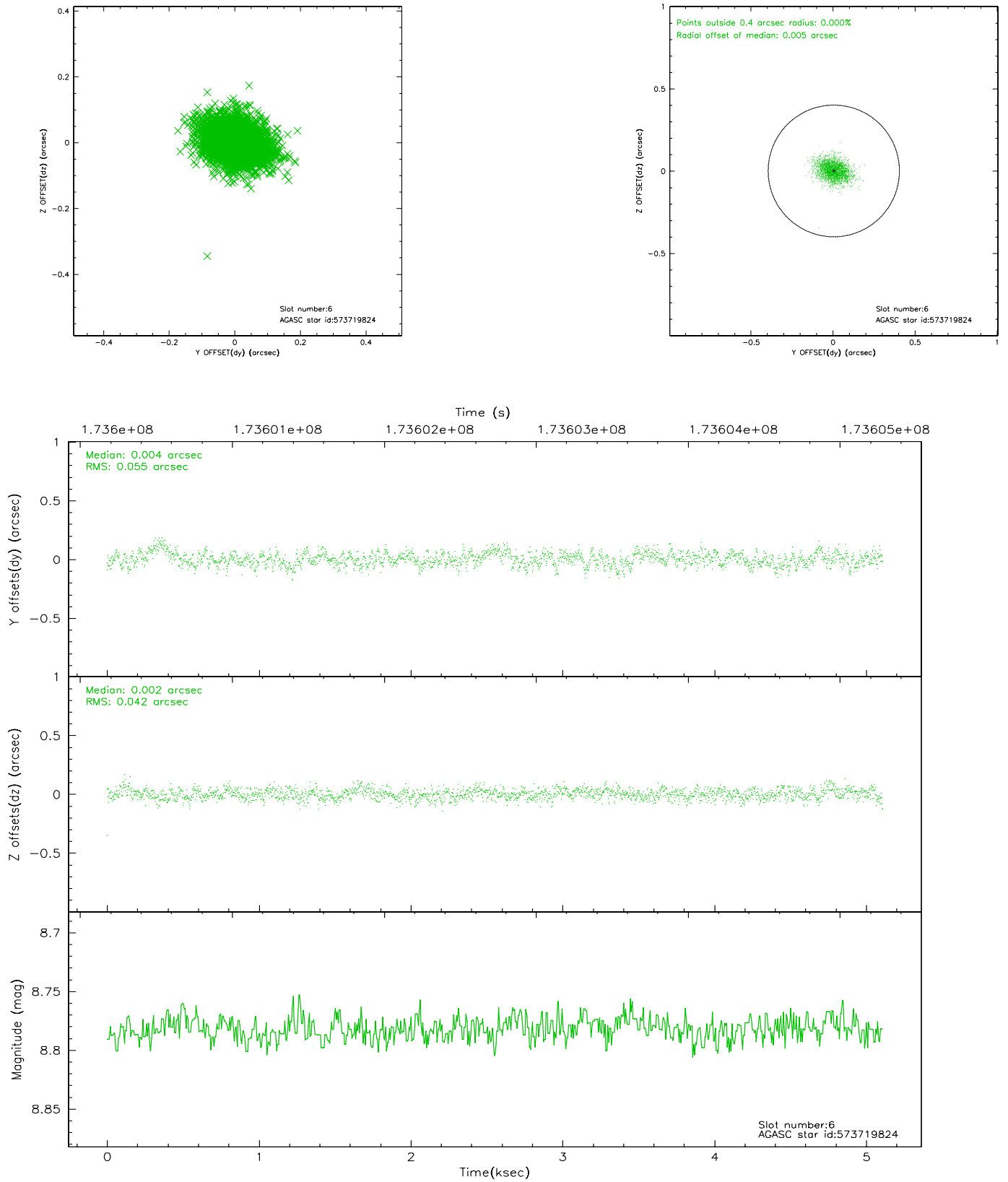
2.4.2 Slot 4



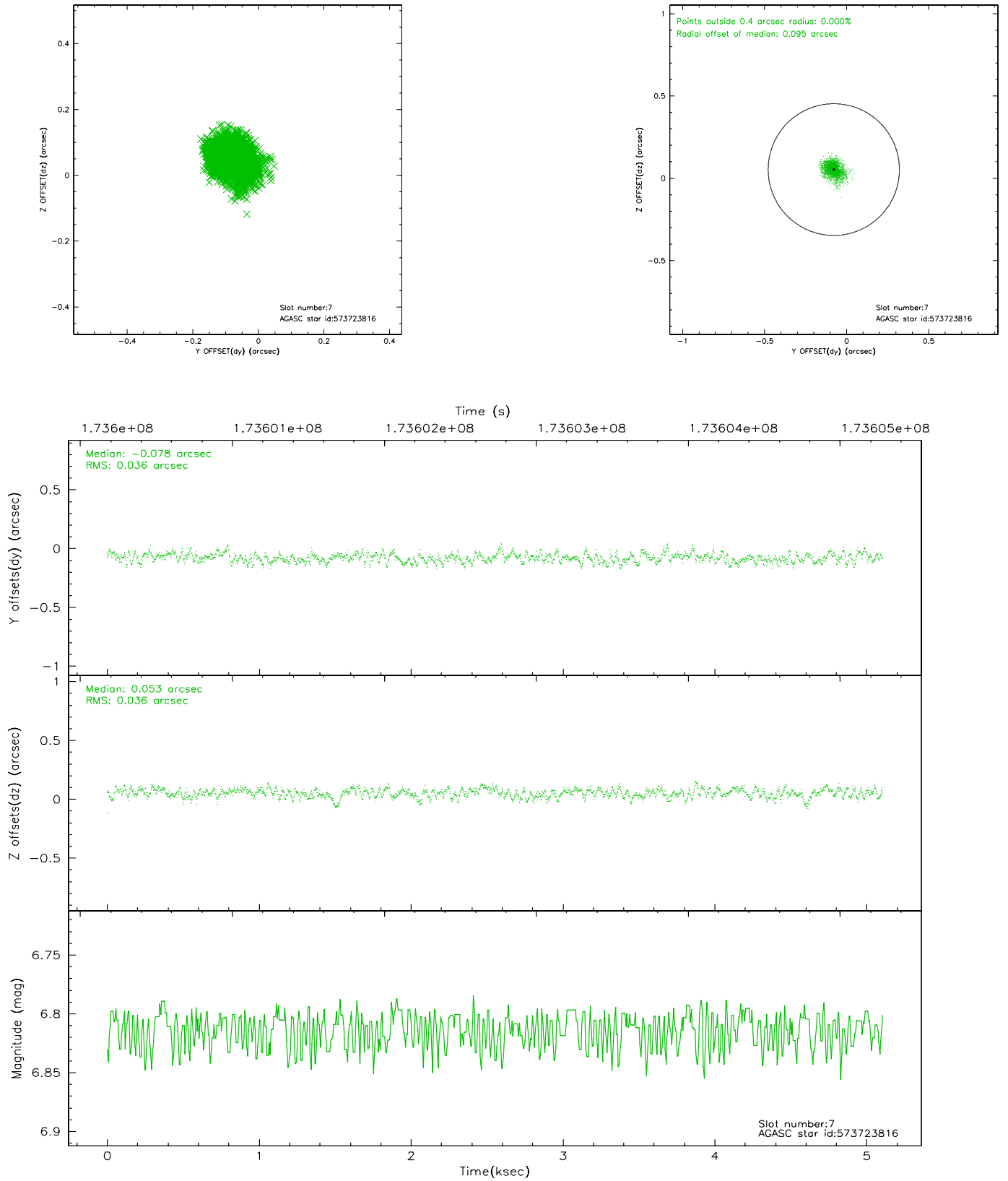
2.4.3 Slot 5



2.4.4 Slot 6

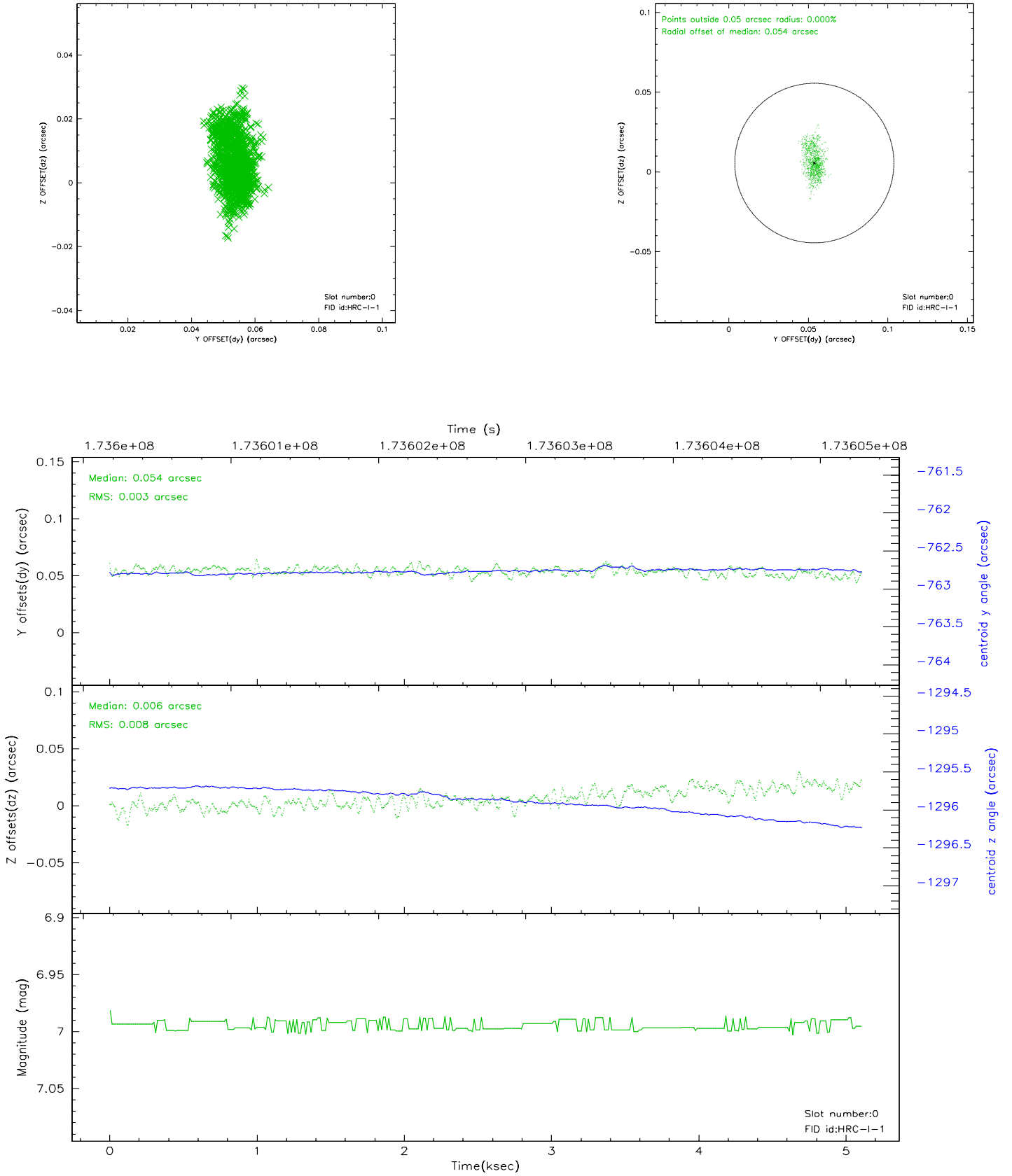


2.4.5 Slot 7

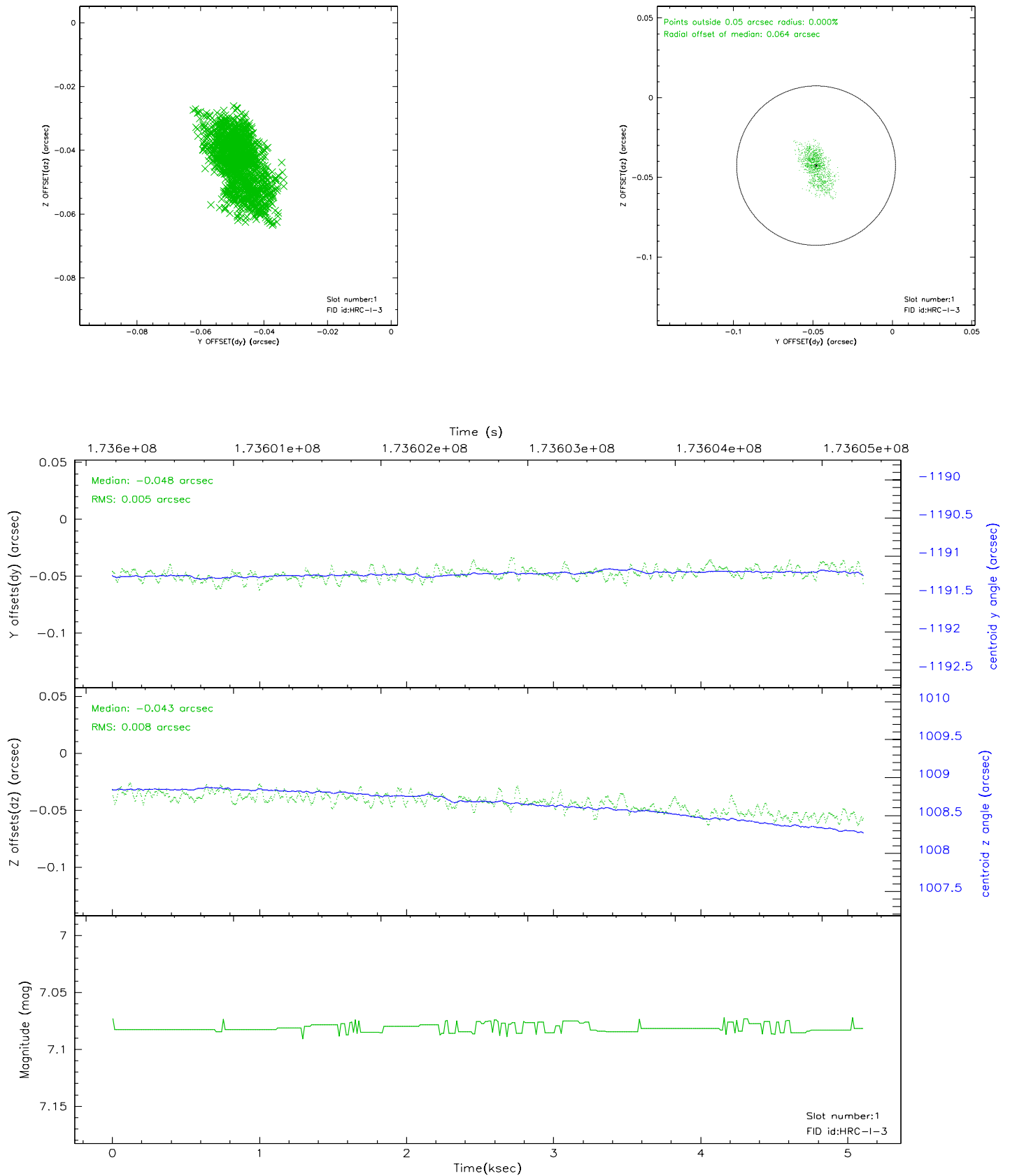


2.5 FID Slots

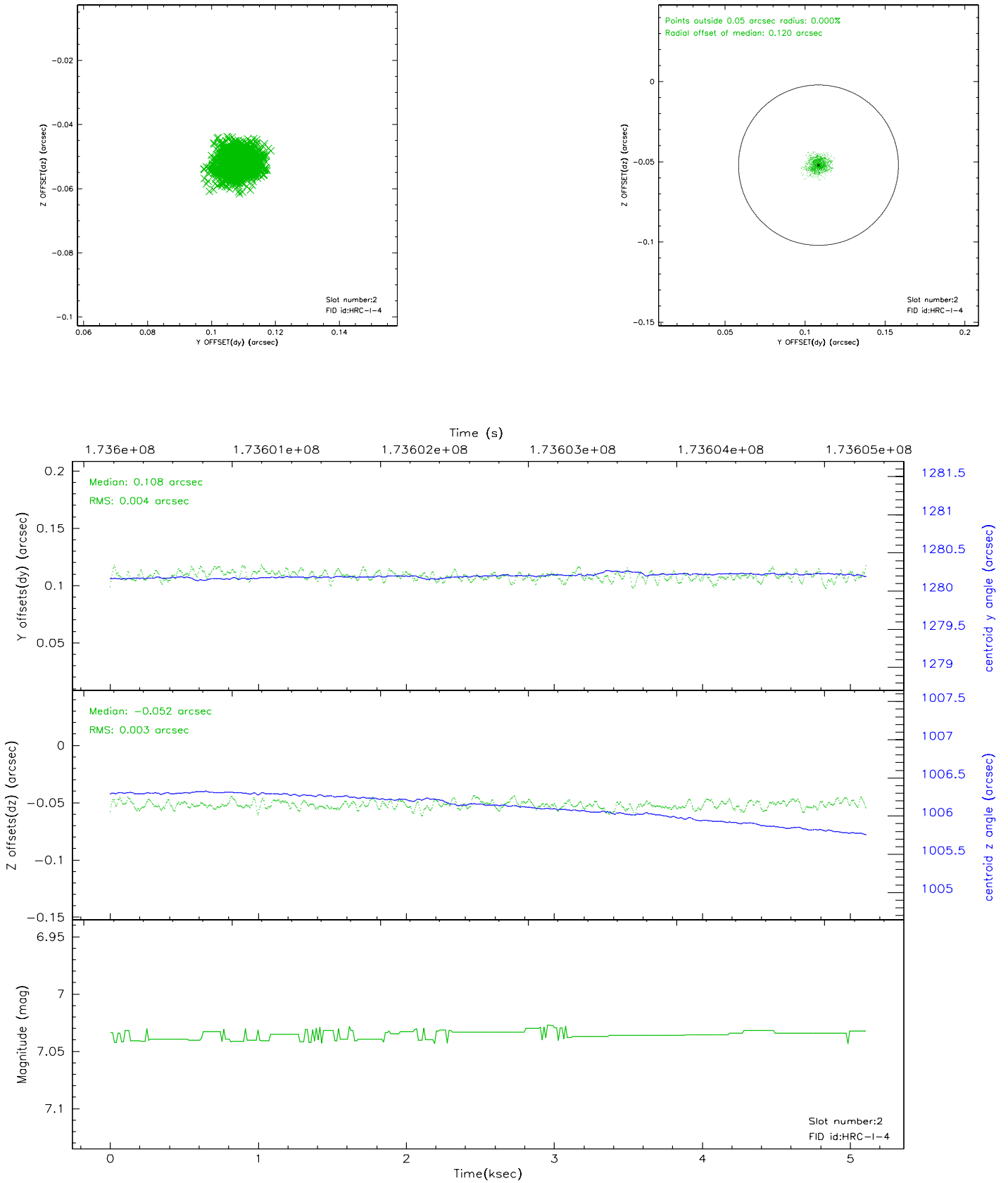
2.5.1 Slot 0



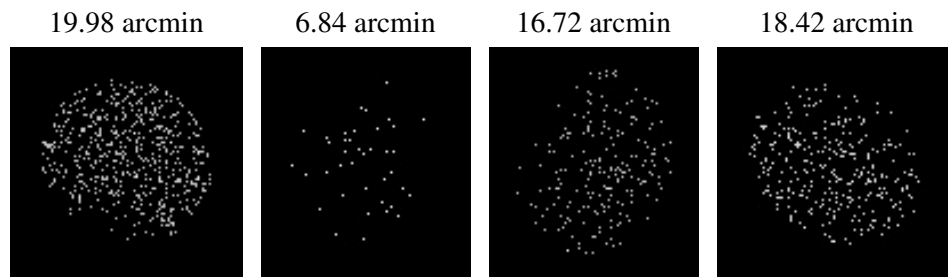
2.5.2 Slot 1



2.5.3 Slot 2



3 Point Sources



A Summary

A.1 Status

V&V Scientist	Jen Lauer
V&V Date (YYYY-MM-DD)	2007.12.05
V&V Edition	1
V&V Disposition and Status	OK
V&V Charge Time	4.894

A.2 Comments

The current observation has been reprocessed as part of Repro III ('C' supplement) the purpose of which is to update all HRC-I ObsIDs since Jan 2000 to the latest calibrations available for that configuration. Specifically, we are updating the DEGAP solution and the Gain Maps applied. For more information see the Repro IIIC web page at

<http://asc.harvard.edu/cda/repro3.html#IIIC>

and the associated links.