

V&V Reference Report

L2 ASCDS Version : 7.6.8

Observation 3509 - L2 Version 001
Chandra X-Ray Center

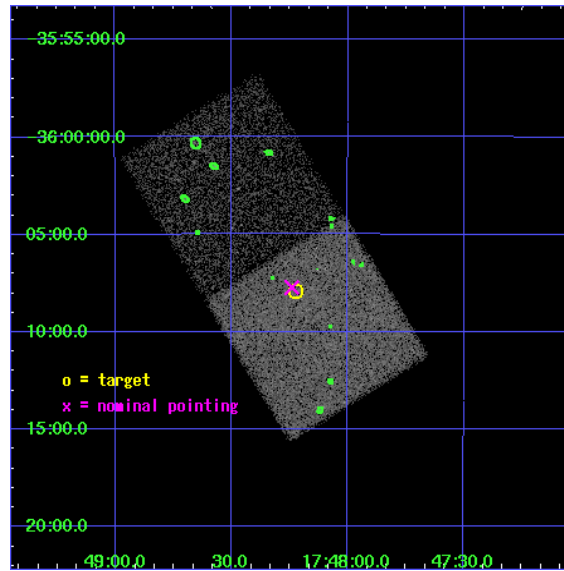
L2 Processing Date : Aug 3 2006

Contents

1	Front	2
2	OBI	3
2.1	OBI	3
2.1.1	Images	3
2.1.2	Bias	3
2.1.3	Parameters	4
2.1.4	Events	4
2.2	Compared Parameters	5
2.3	Aspect	6
2.4	Star Slots	9
2.4.1	Slot 3	9
2.4.2	Slot 4	10
2.4.3	Slot 5	11
2.4.4	Slot 6	12
2.4.5	Slot 7	13
2.5	FID Slots	14
2.5.1	Slot 0	14
2.5.2	Slot 1	15
2.5.3	Slot 2	16
3	Point Sources	17
A	Summary	18
A.1	Status	18
A.2	Comments	18

1 Front

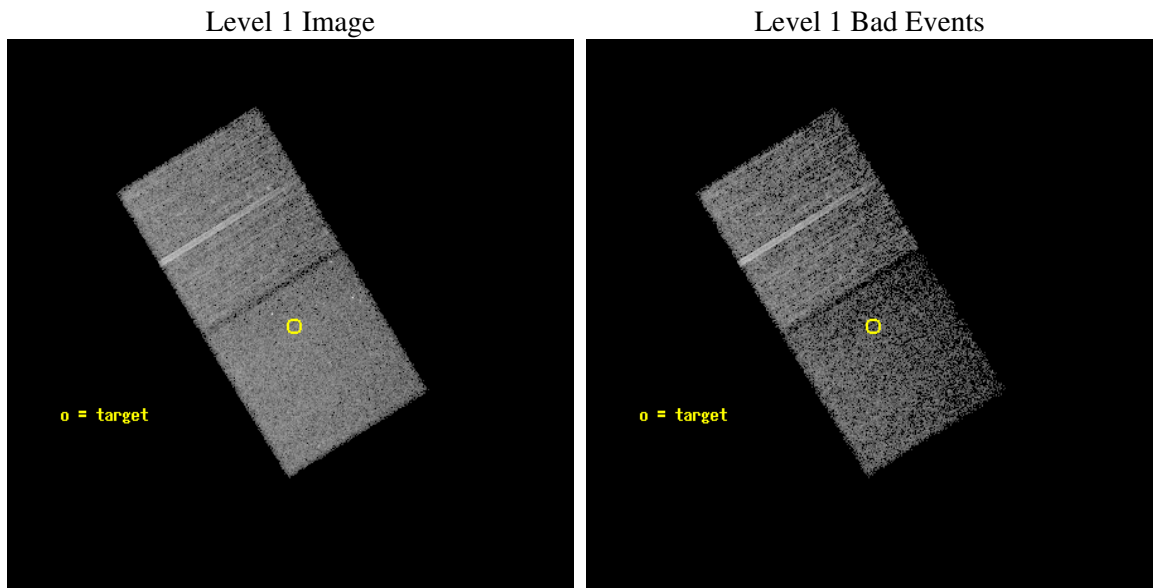
seq_num	400262
obs_id	3509
title	NEUTRON STARS IN QUIESCENCE
observer	Dr. Stephen Murray
object	A1744-361
dtcycle	0
cycle	P
ra_targ	267.055833
dec_targ	-36.131389
ra_nom	267.06021220601
dec_nom	-36.12884812765
roll_nom	58.550173545723
revision	2
ontime	16011.0
livetime	15794.925420251
ontime6	16007.95901975
ontime7	16011.0
l2events	51460



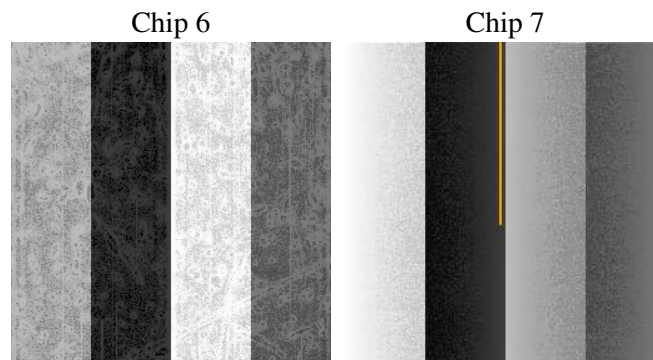
2 OBI

2.1 OBI

2.1.1 Images



2.1.2 Bias



2.1.3 Parameters

obi_num	0
ascdsver	7.6.8
caldsver	3.2.2
date	2006-08-03T03:25:13
revision	2

sched_exp_time	15500.000000
ontime	16013.959519237
ontime6	16010.918538988
ontime7	16013.959519237
l1events	201109

2.1.4 Events

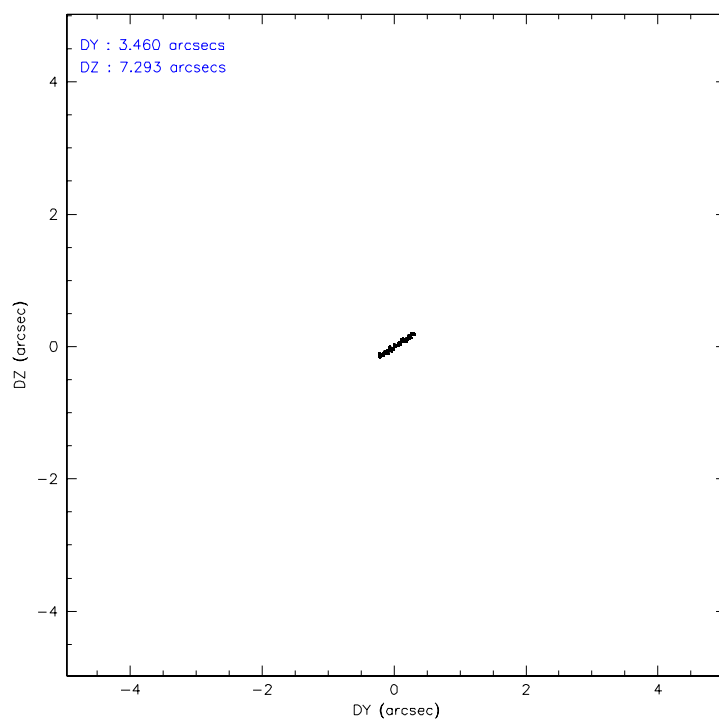
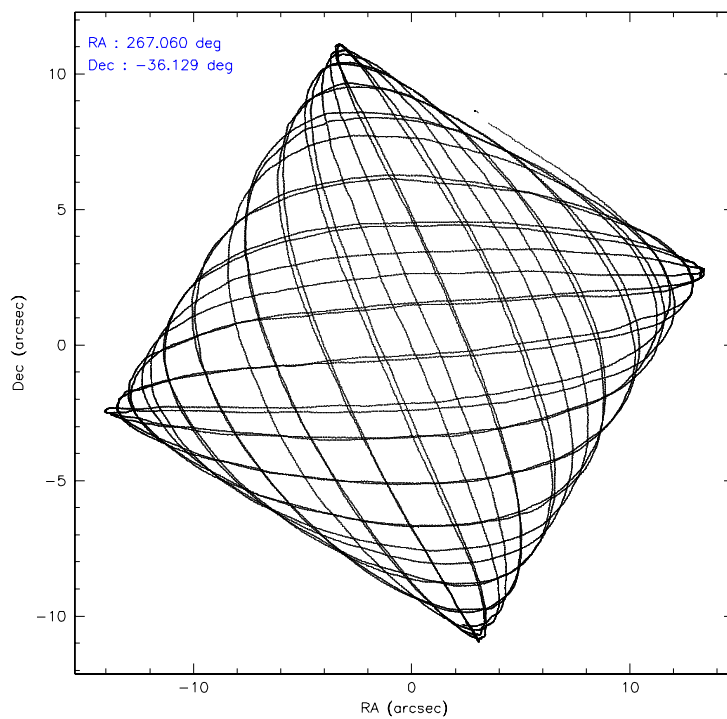
	ccd 6	ccd 7
level 1 events	104757	96352
rejected events	92483	54516
rejected %	88%	56%

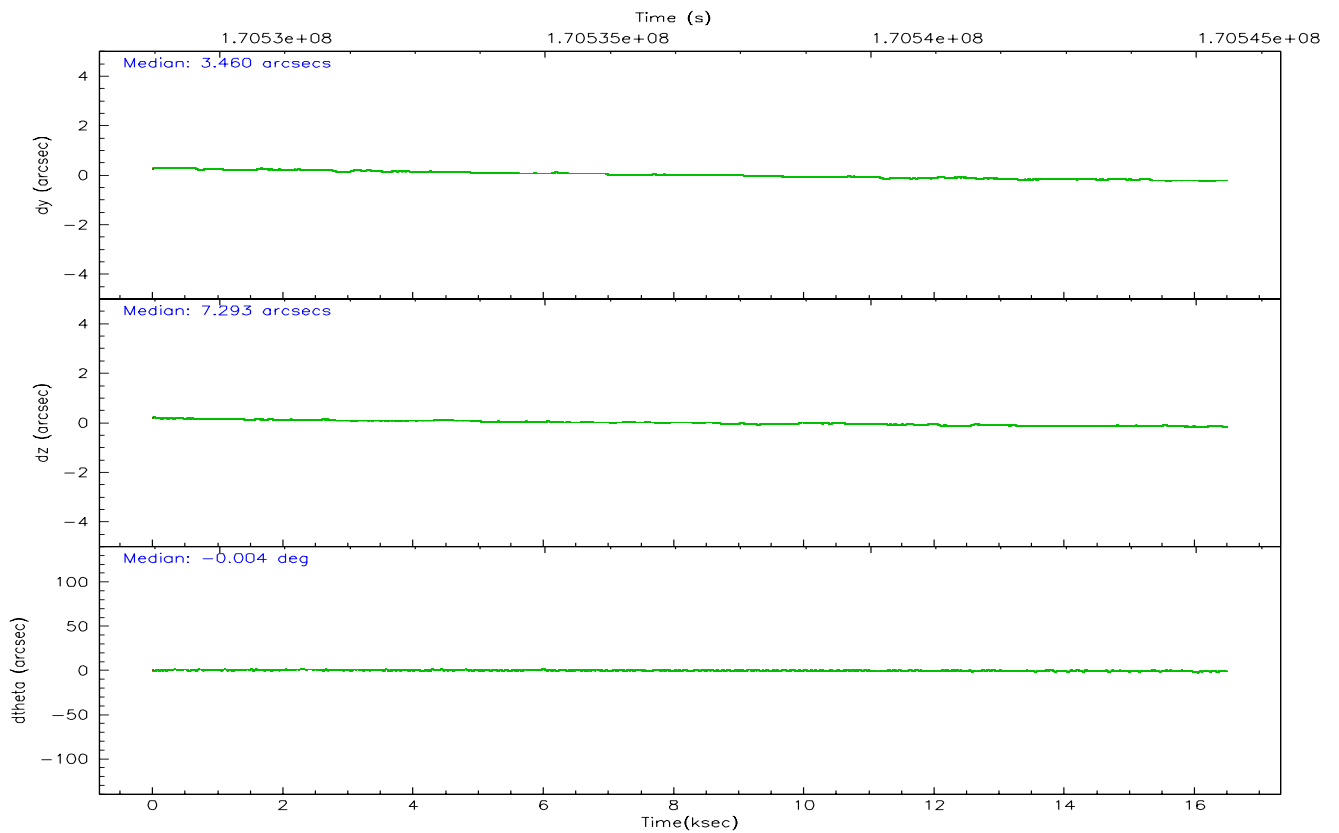
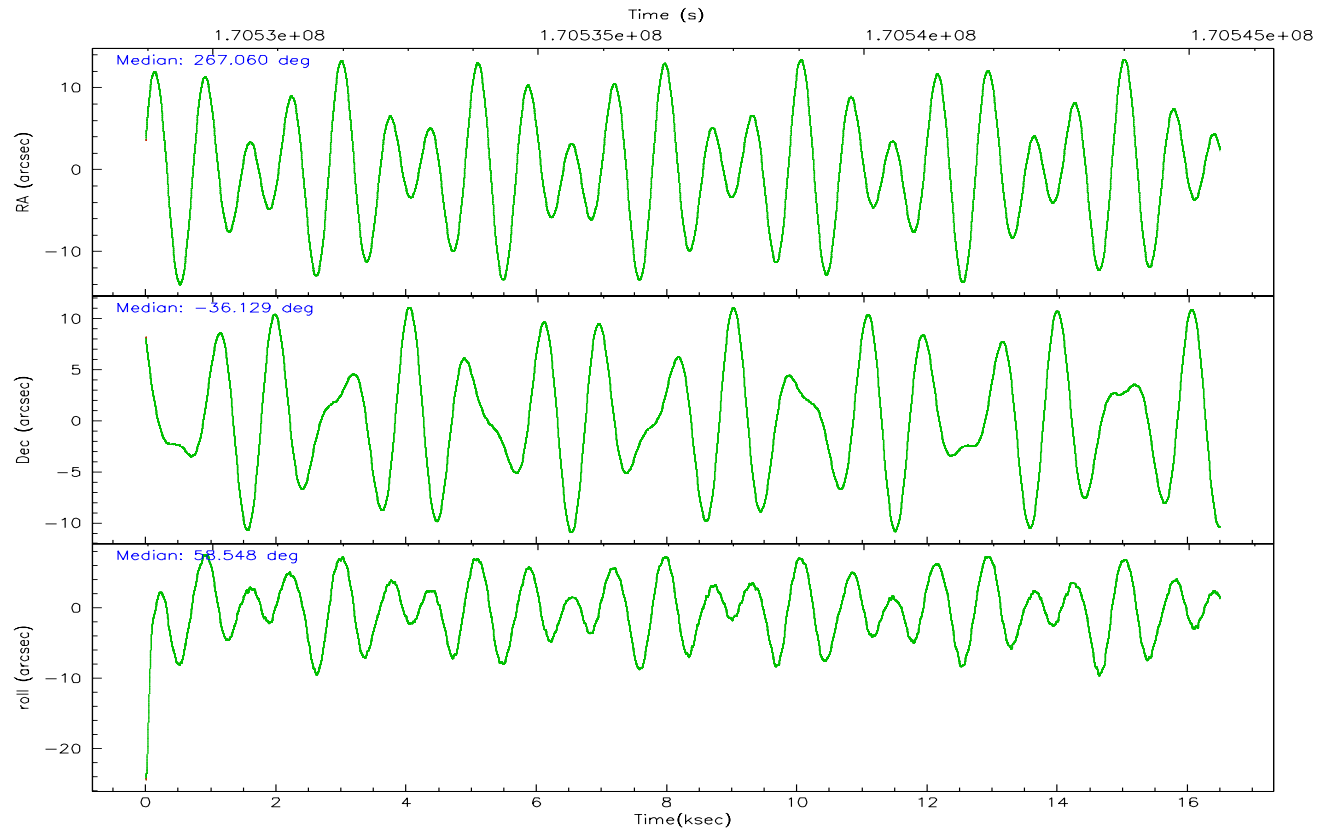
	ccd 6	ccd 7
grade 0 events	5379	3218
	5%	3%
grade 1 events	44	51
	0%	0%
grade 2 events	2742	10242
	2%	10%
grade 3 events	1124	2365
	1%	2%
grade 4 events	1041	2303
	0%	2%
grade 5 events	3367	7071
	3%	7%
grade 6 events	1990	23718
	1%	24%
grade 7 events	89070	47384
	85%	49%

2.2 Compared Parameters

Parameter	Planned	Actual	Parameter	Planned	Actual
Instrument	ACIS	ACIS	Obspar format version number	6	6
Detector	ACIS-67	ACIS-67	Obspar file type	PREDICTED	ACTUAL
Grating	NONE	NONE	Obspar update status	NONE	UPDATED
Data mode	VFAINT	VFAINT	On-chip summing requested	N	N
Observation mode	POINTING	POINTING	Subarray requested	NONE	NONE
Pointing RA	267.059803	267.0602122060145	Alternating exposures requested	N	N
Pointing Dec	-36.156064	-36.12884812765031	Primary exposure time	0.000000	3
Pointing Roll	58.393315	58.55017354572291			
SIM focus pos (mm)	-0.684267	-0.6828225247311905			
SIM defocus (mm)	0	0.001444936568705701			
SIM translation stage pos (mm)	-190.132523	-190.1400660498719			
SIM translation stage offset (mm)	0	0.00754346686406393			
Observation start time	170529979.184000	170528615.71722			
Observation start date	2003-05-28T17:25:15	2003-05-28T17:03:35			
Observation end time	170545479.184000	170547008.318			
Observation end date	2003-05-28T21:43:35	2003-05-28T22:10:08			
Read mode	TIMED	TIMED			

2.3 Aspect



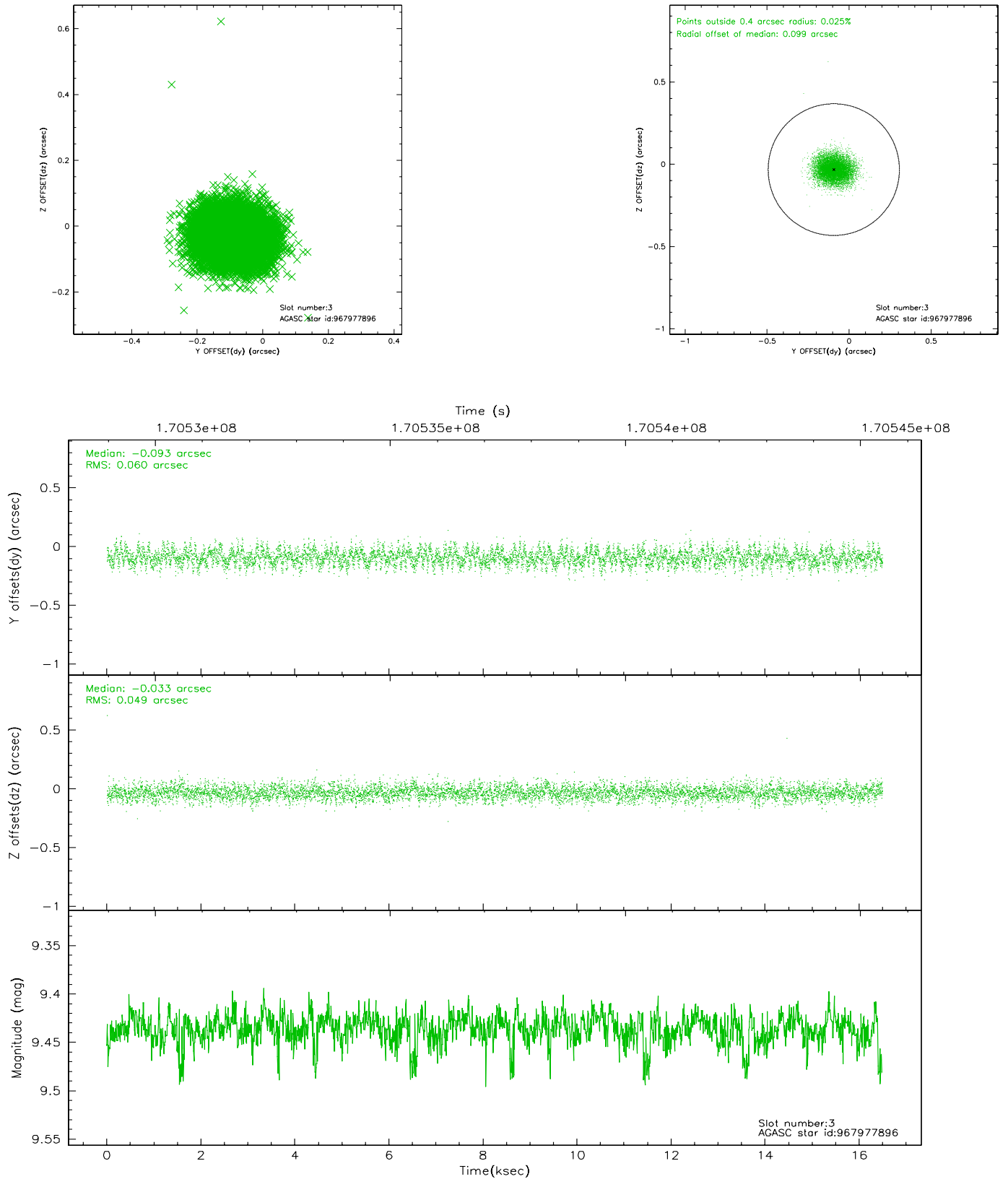


Slot Statistics

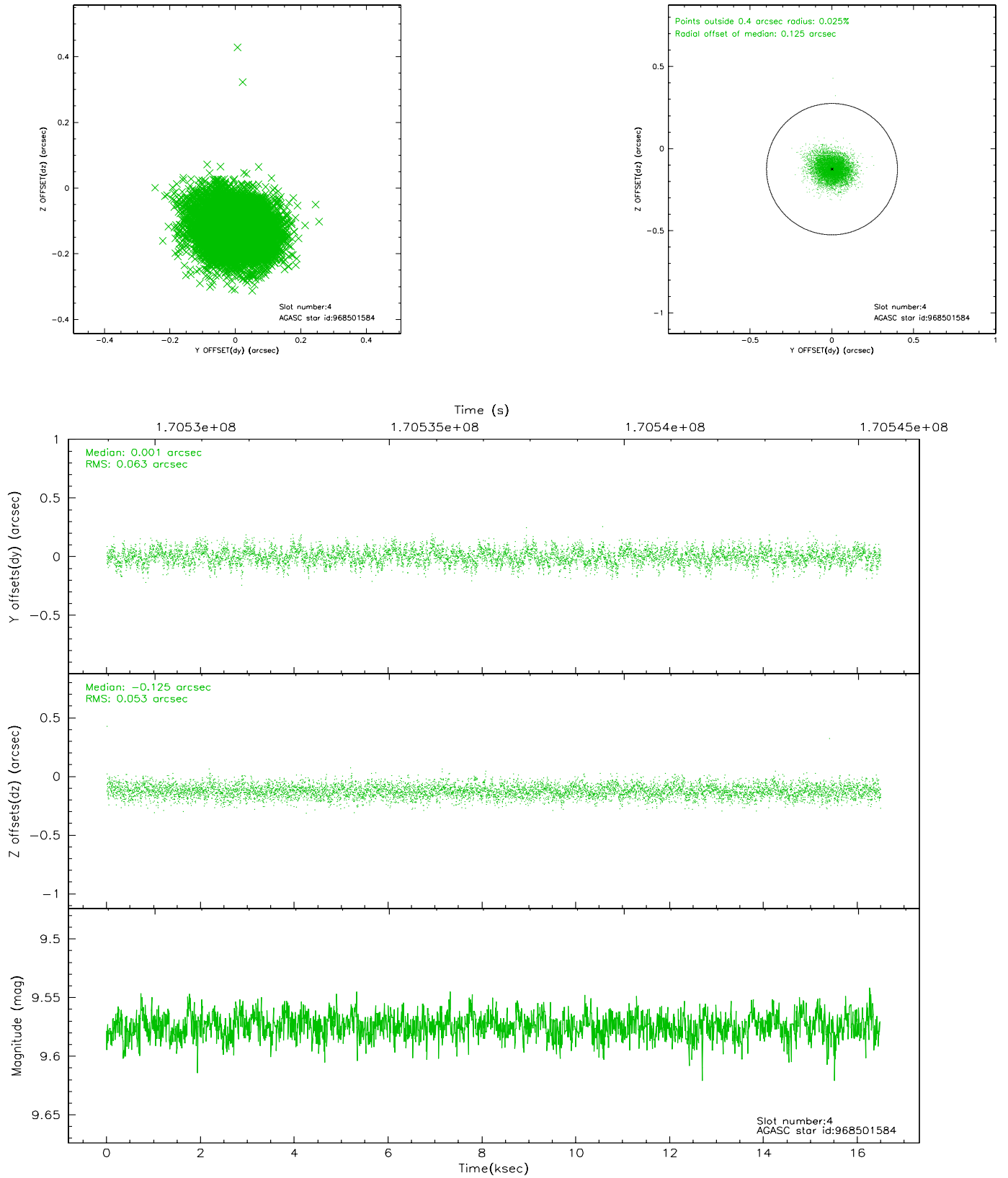
slot	status	id	mag	n_pts	med_dy	med_dz	dr1	dr2	ra	dec	mean_y	mean_z
0	FID	ACIS-S-1	7.19	4024	0.034	-0.039	0.009	0.015	0.000000	0.000000	939.90	-1724.16
1	FID	ACIS-S-2	7.11	4024	-0.031	0.028	0.007	0.012	0.000000	0.000000	-755.93	-1728.86
2	FID	ACIS-S-4	7.20	4024	-0.030	0.017	0.007	0.011	0.000000	0.000000	2157.00	179.76
3	GUIDE	967977896	9.43	8044	-0.093	-0.033	0.083	0.133	266.967297	-35.404609	2161.61	1649.21
4	GUIDE	968501584	9.57	8043	0.001	-0.125	0.087	0.144	266.998581	-35.722059	1237.21	971.55
5	GUIDE	968503504	8.60	8046	0.080	-0.008	0.061	0.100	266.716766	-36.547676	-1721.83	105.40
6	GUIDE	968639336	8.67	8044	-0.088	0.145	0.076	0.118	267.813813	-35.890844	1958.24	-1376.53
7	GUIDE	968500640	8.92	8046	0.100	0.022	0.066	0.108	266.522838	-36.659039	-2358.04	369.46

2.4 Star Slots

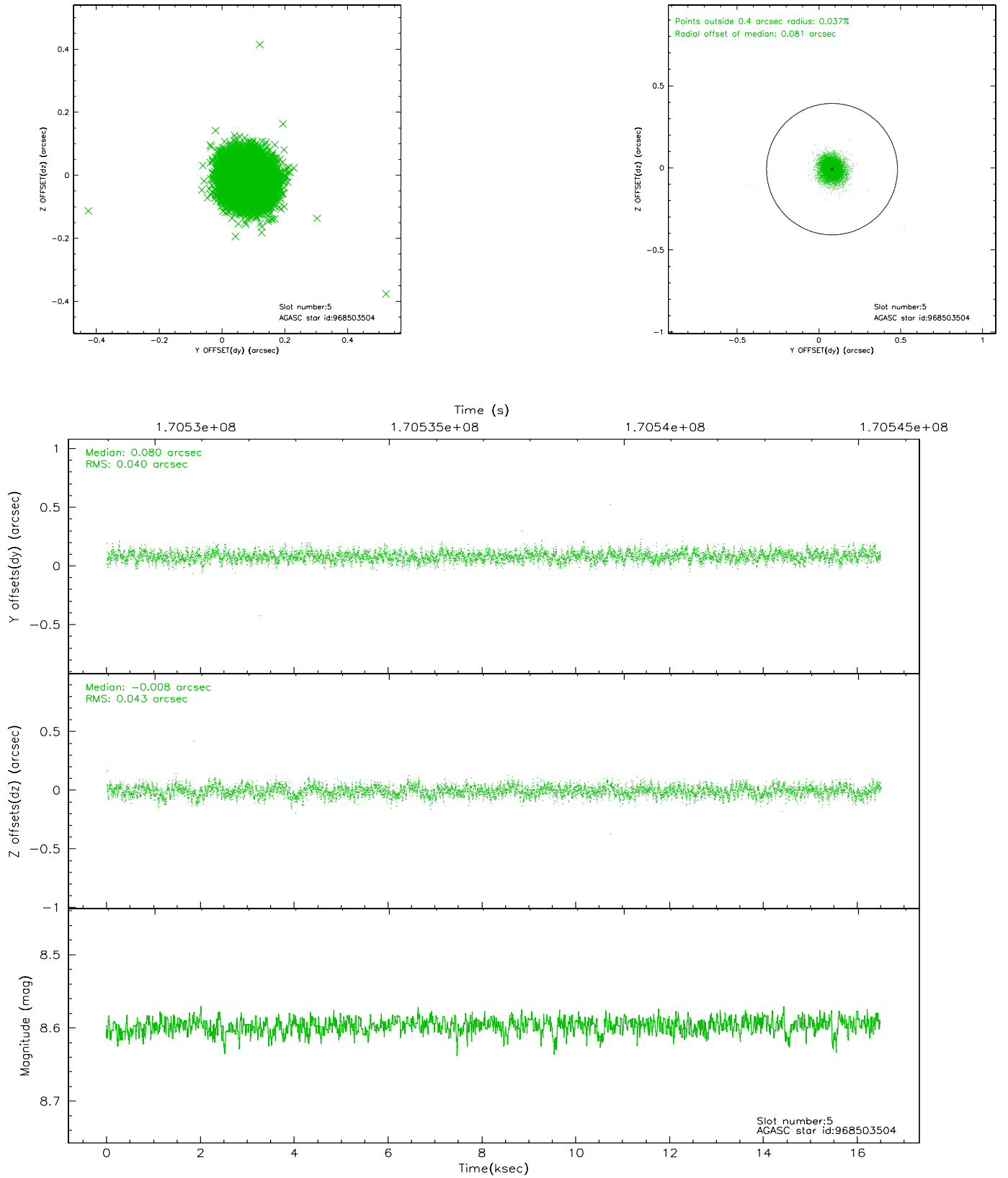
2.4.1 Slot 3



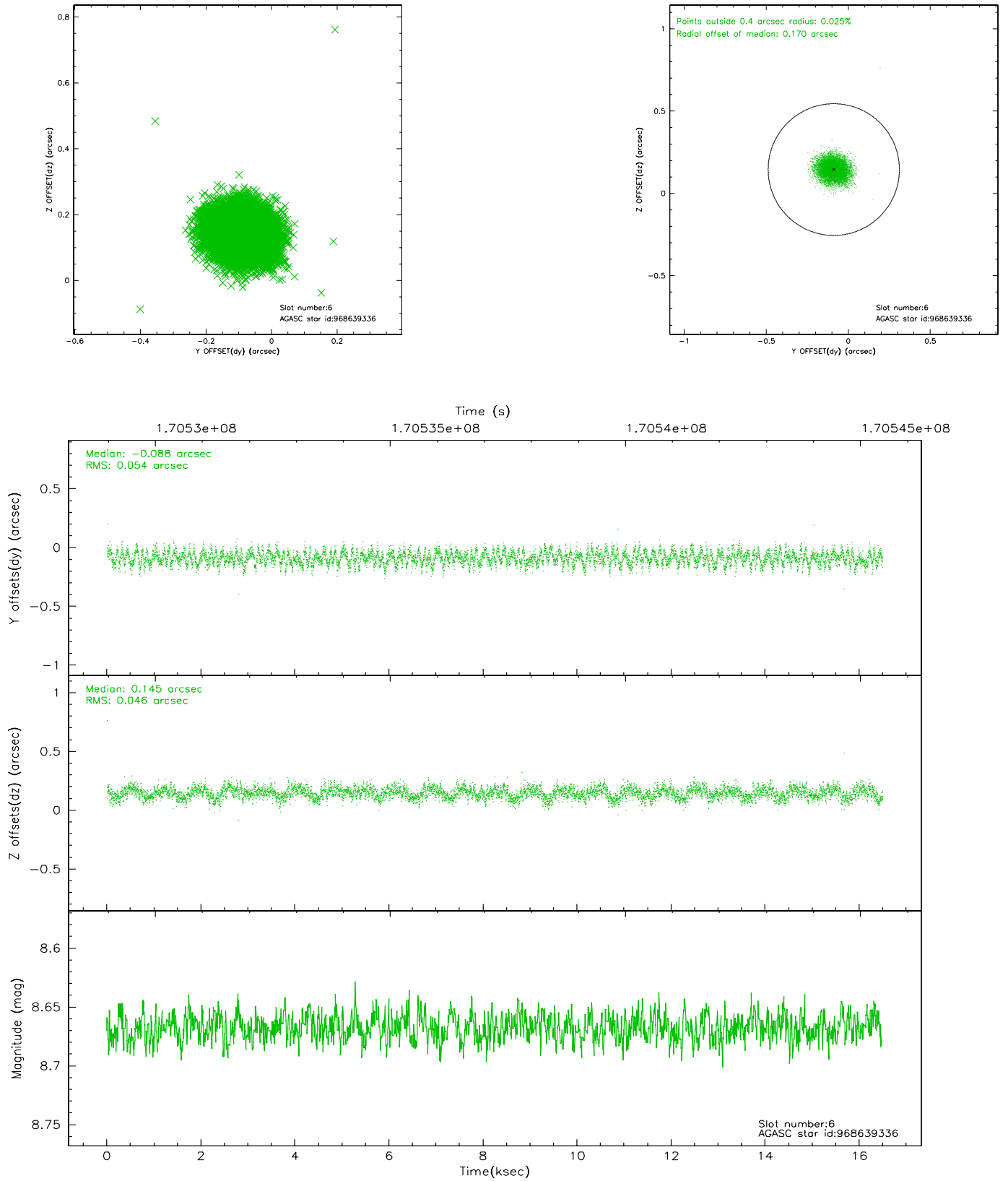
2.4.2 Slot 4



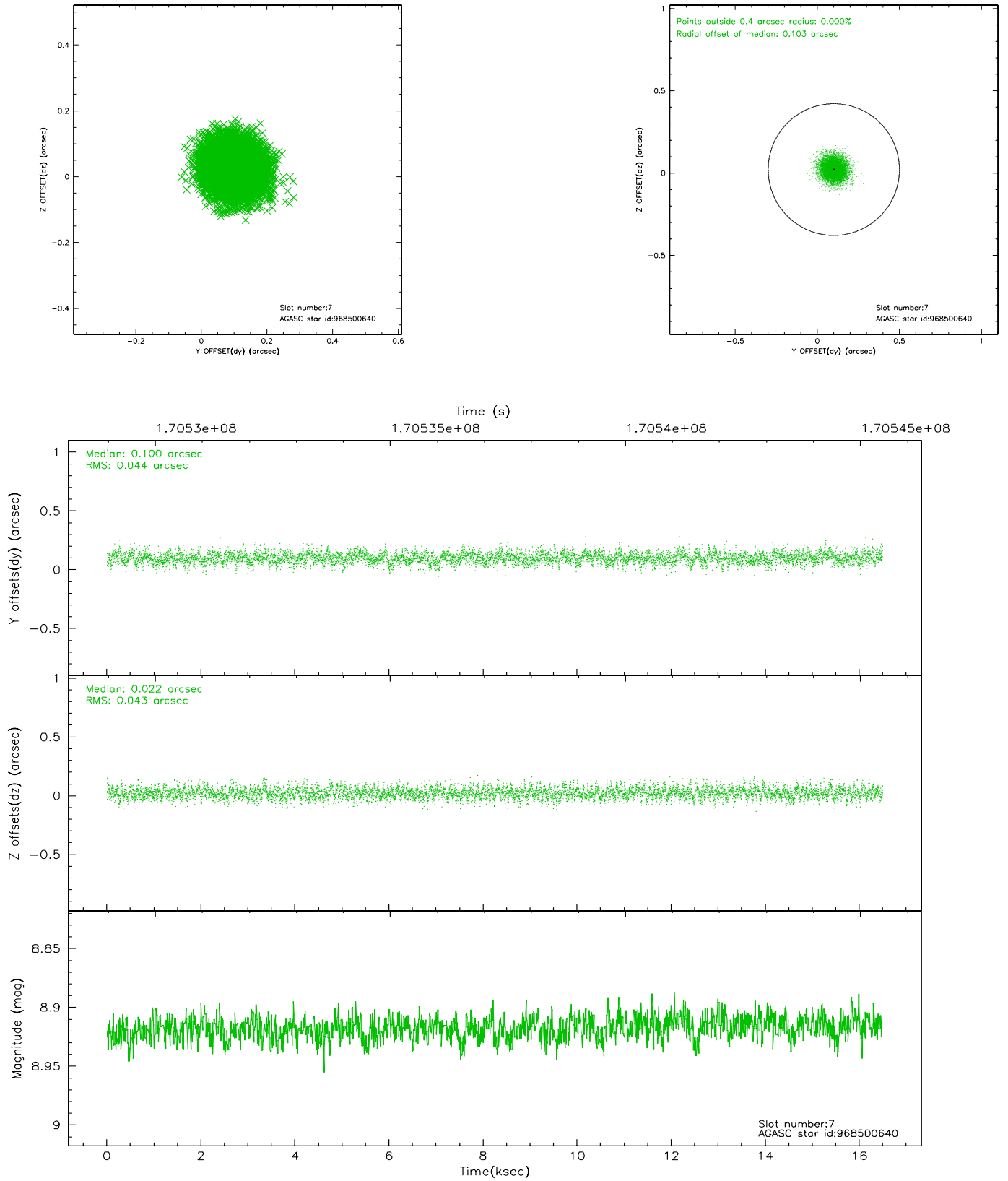
2.4.3 Slot 5



2.4.4 Slot 6

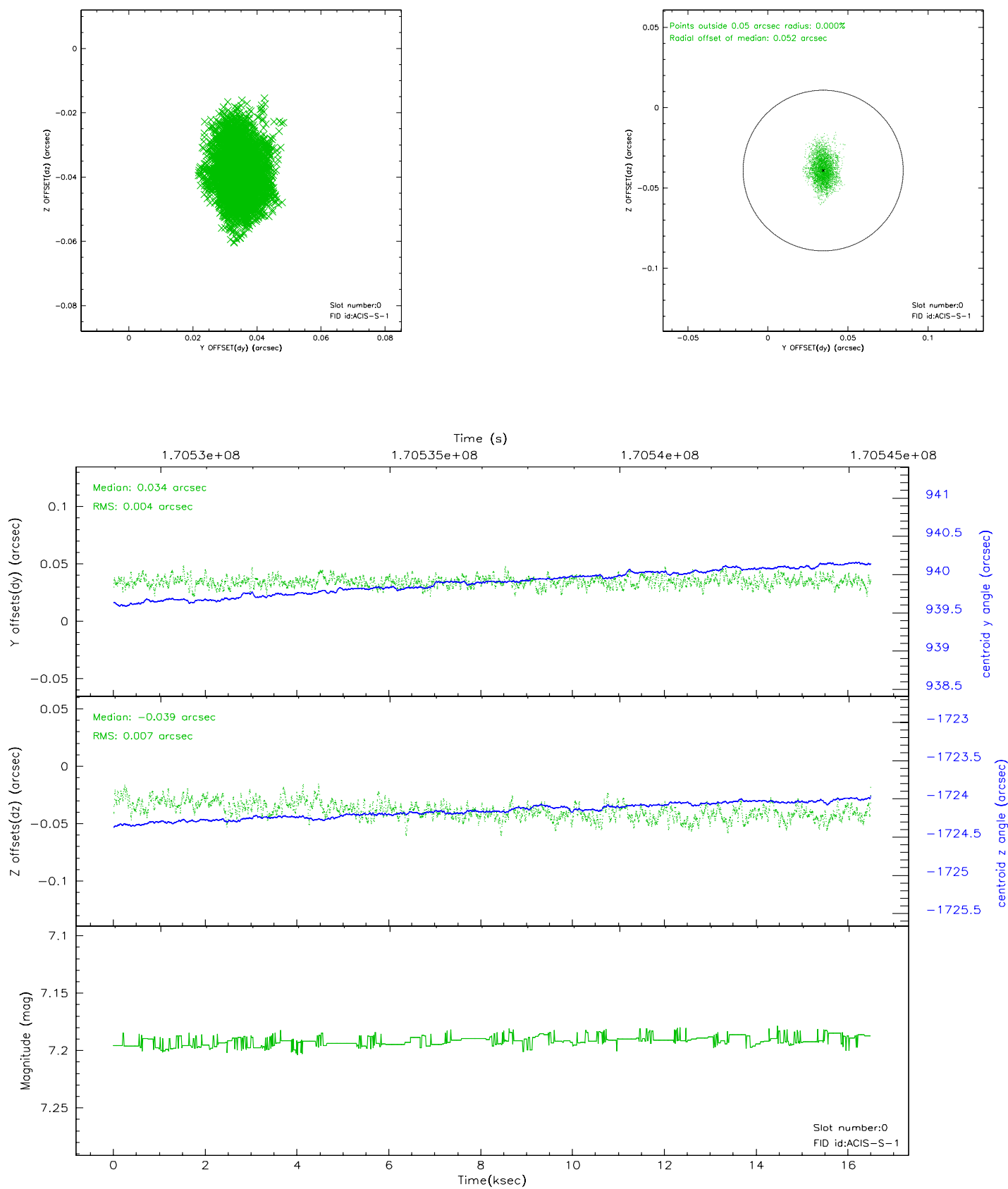


2.4.5 Slot 7

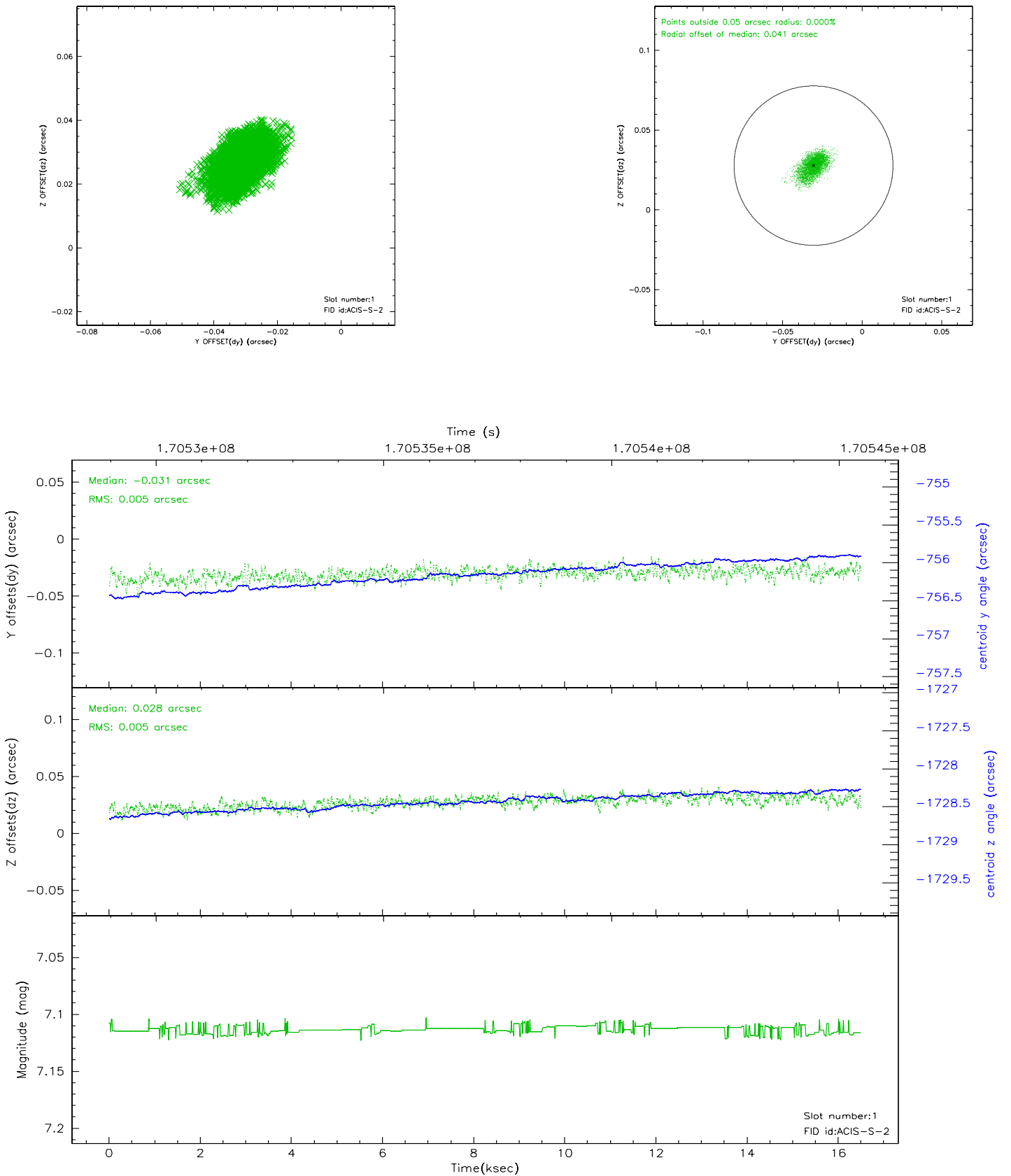


2.5 FID Slots

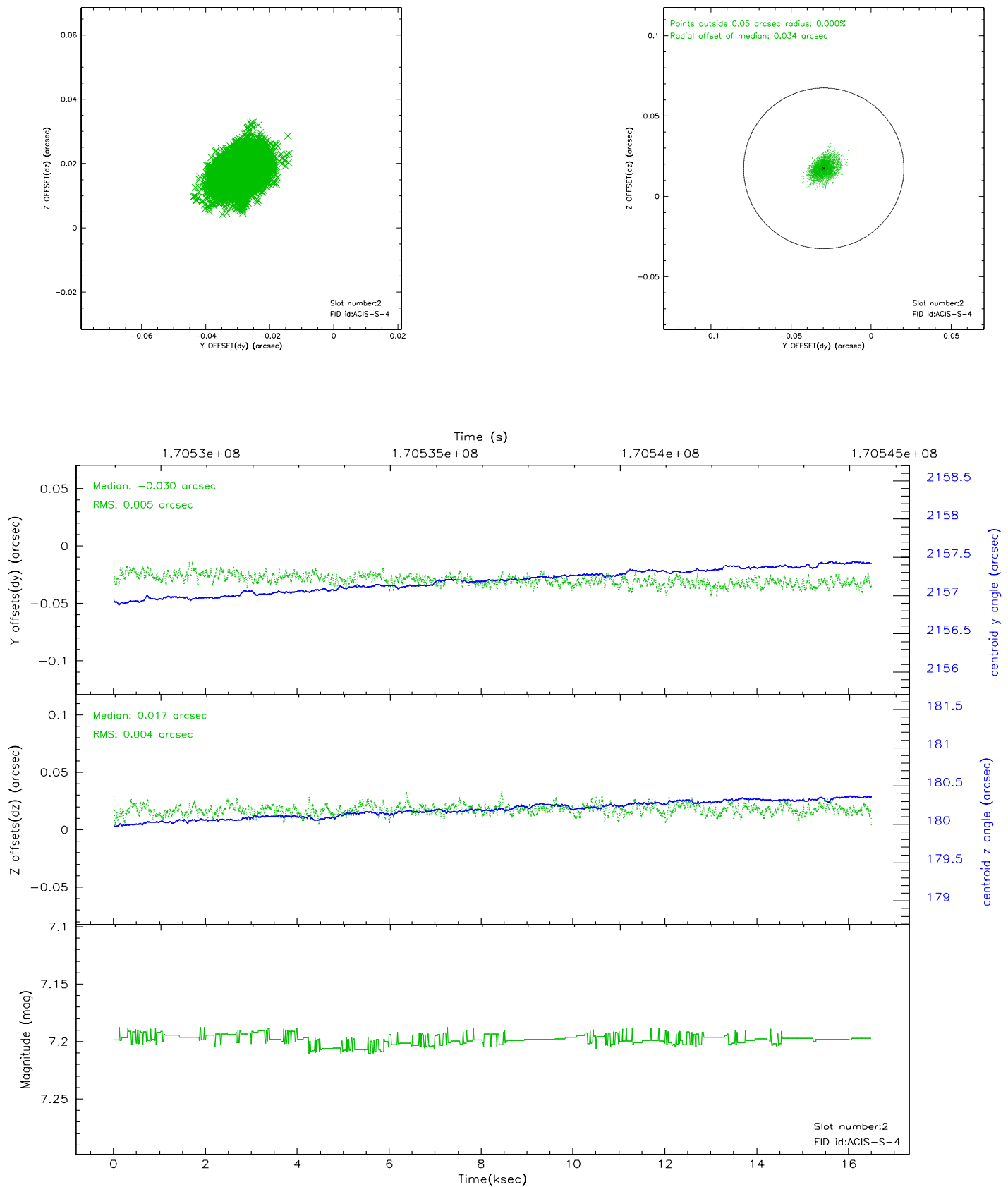
2.5.1 Slot 0



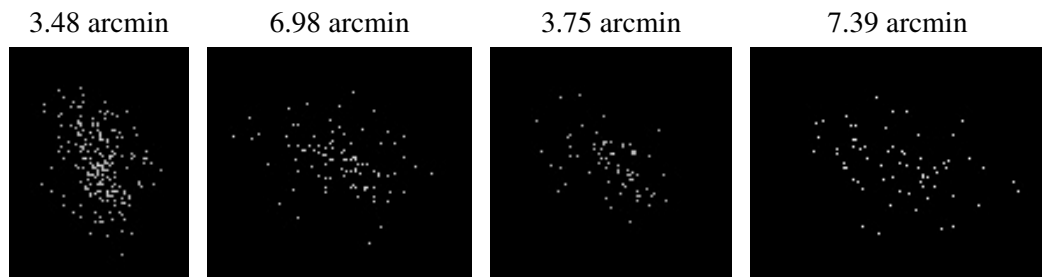
2.5.2 Slot 1



2.5.3 Slot 2



3 Point Sources



A Summary

A.1 Status

V&V Scientist	Beth Sundheim
V&V Date (YYYY-MM-DD)	2006.08.03
V&V Edition	1
V&V Disposition and Status	OK
V&V Charge Time	15.95

A.2 Comments