

V&V Reference Report

L2 ASCDS Version : 7.6.9

Observation 3762 - L2 Version 001
Chandra X-Ray Center

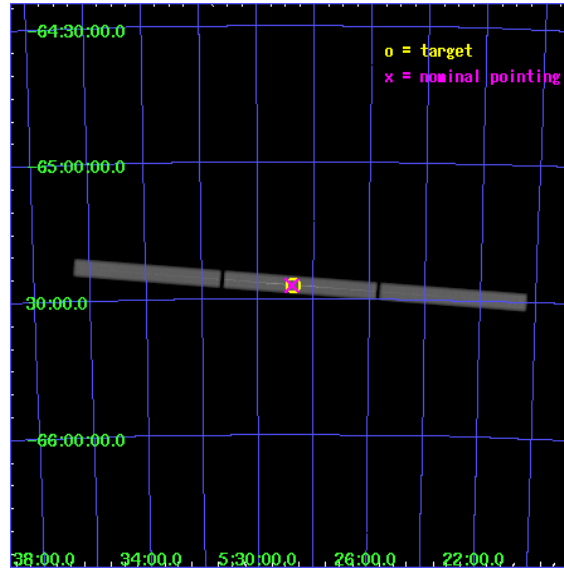
L2 Processing Date : Oct 15 2006

Contents

1	Front	2
2	OBI	3
2.1	OBI	3
2.1.1	Images	3
2.1.2	Parameters	4
2.1.3	Events	4
2.2	Compared Parameters	5
2.3	Aspect	6
2.4	Star Slots	9
2.4.1	Slot 3	9
2.4.2	Slot 4	10
2.4.3	Slot 5	11
2.4.4	Slot 6	12
2.4.5	Slot 7	13
2.5	FID Slots	14
2.5.1	Slot 0	14
2.5.2	Slot 1	15
2.5.3	Slot 2	16
3	Gratings	17
3.1	LETG Arm	17
A	Summary	19
A.1	Status	19
A.2	Comments	19

1 Front

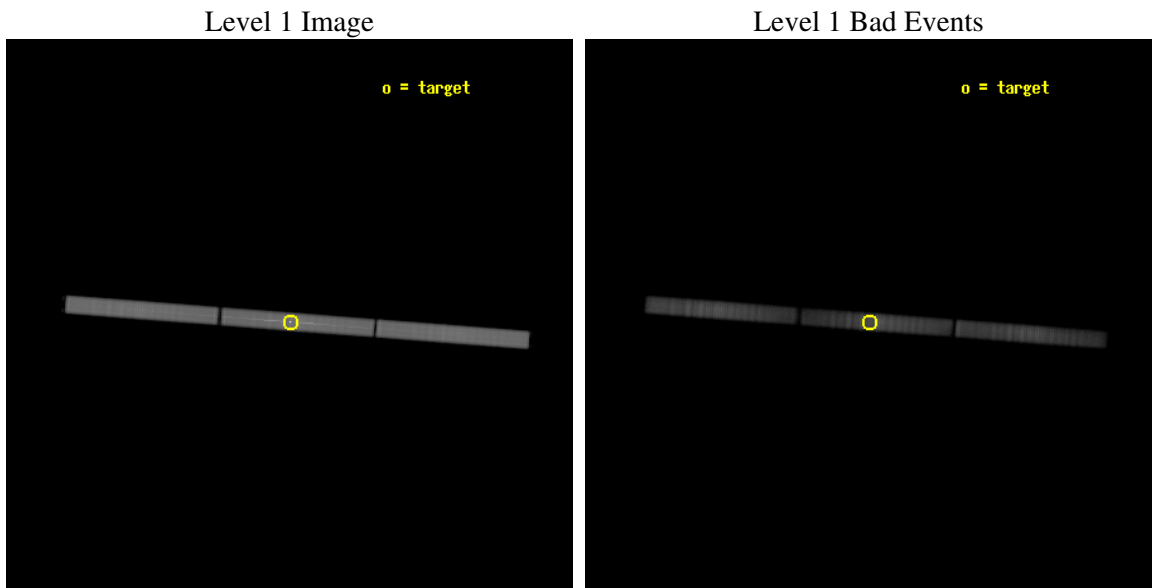
seq_num	200232
obs_id	3762
title	PROBING THE CORONA OF AN ACTIVE SOLAR-TYPE STAR
observer	Dr Gaitee Hussain
object	AB DORADUS
ra_targ	82.185417
dec_targ	-65.450611
ra_nom	82.196612121088
dec_nom	-65.450377764333
roll_nom	4.2906573907076
revision	2
ontime	85766.109827042
livetime	85275.291141475
l2events	3685760



2 OBI

2.1 OBI

2.1.1 Images



2.1.2 Parameters

obi_num	0
ascdsver	7.6.9
caldbver	3.2.3
date	2006-10-15T06:24:53
revision	2

sched_exp_time	85382.660000
ontime	85856.053580791
l1events	5465537

2.1.3 Events

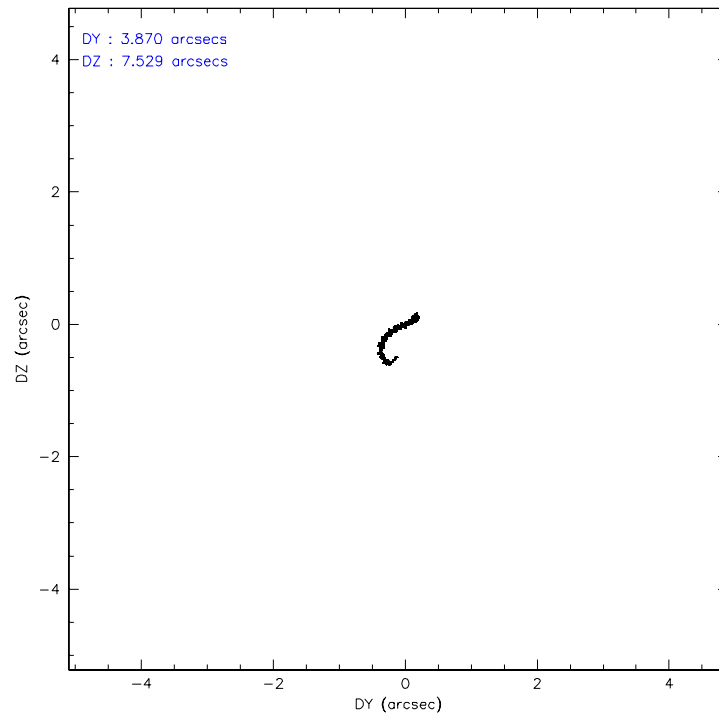
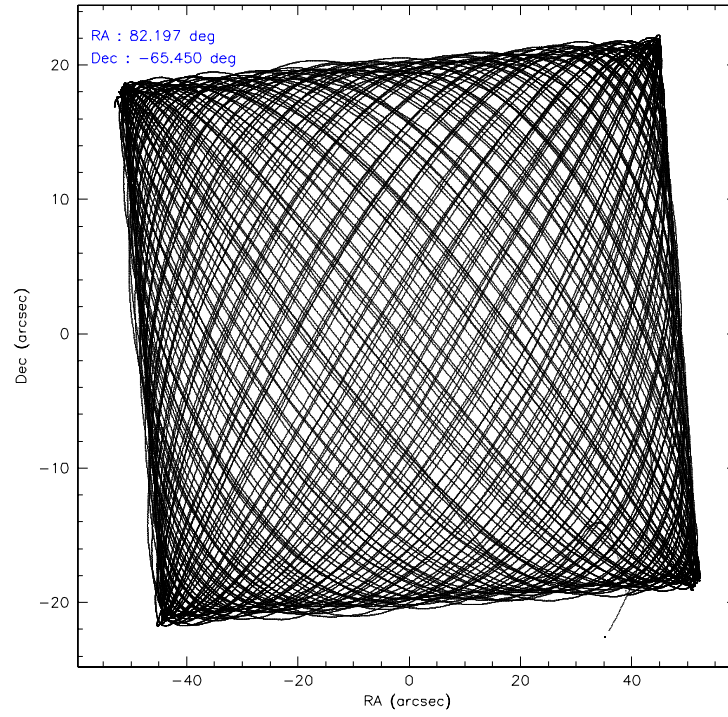
Level 1 Events

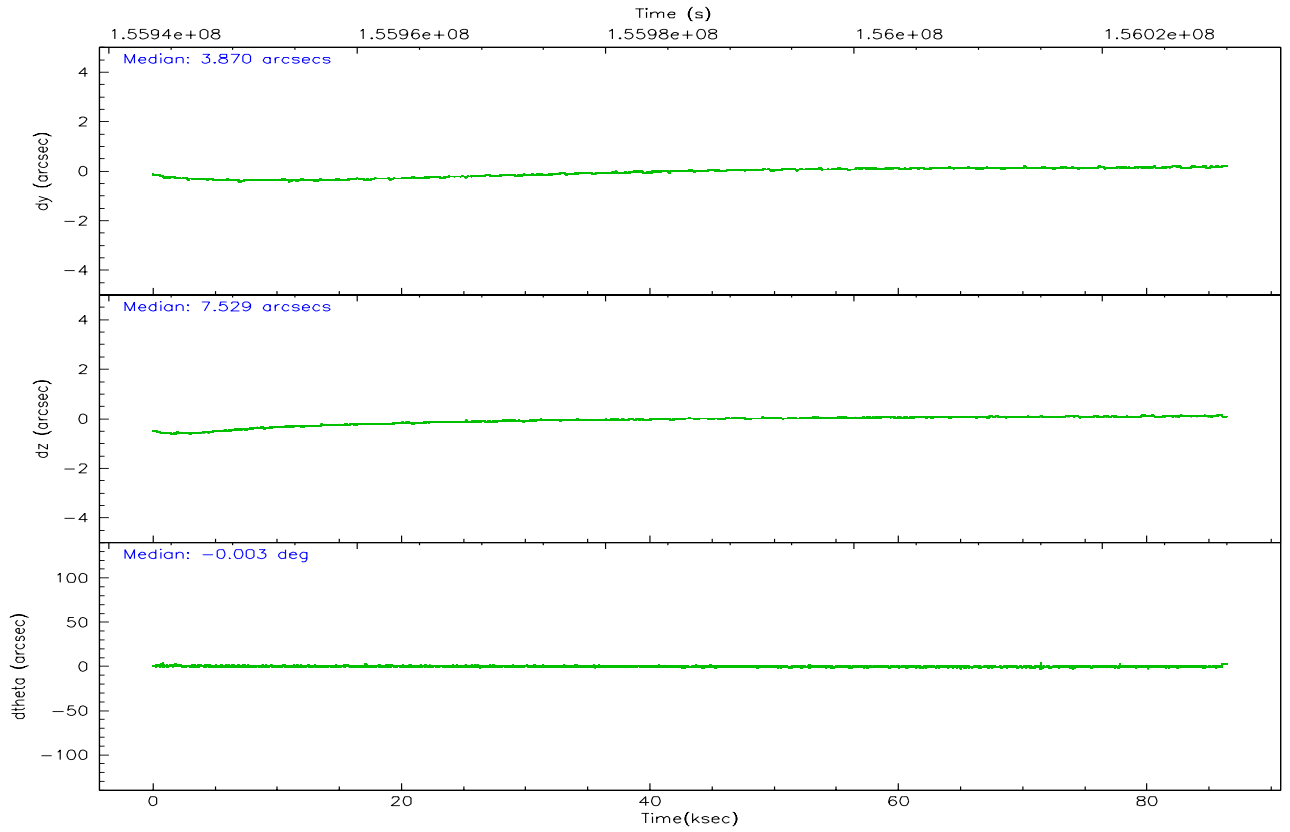
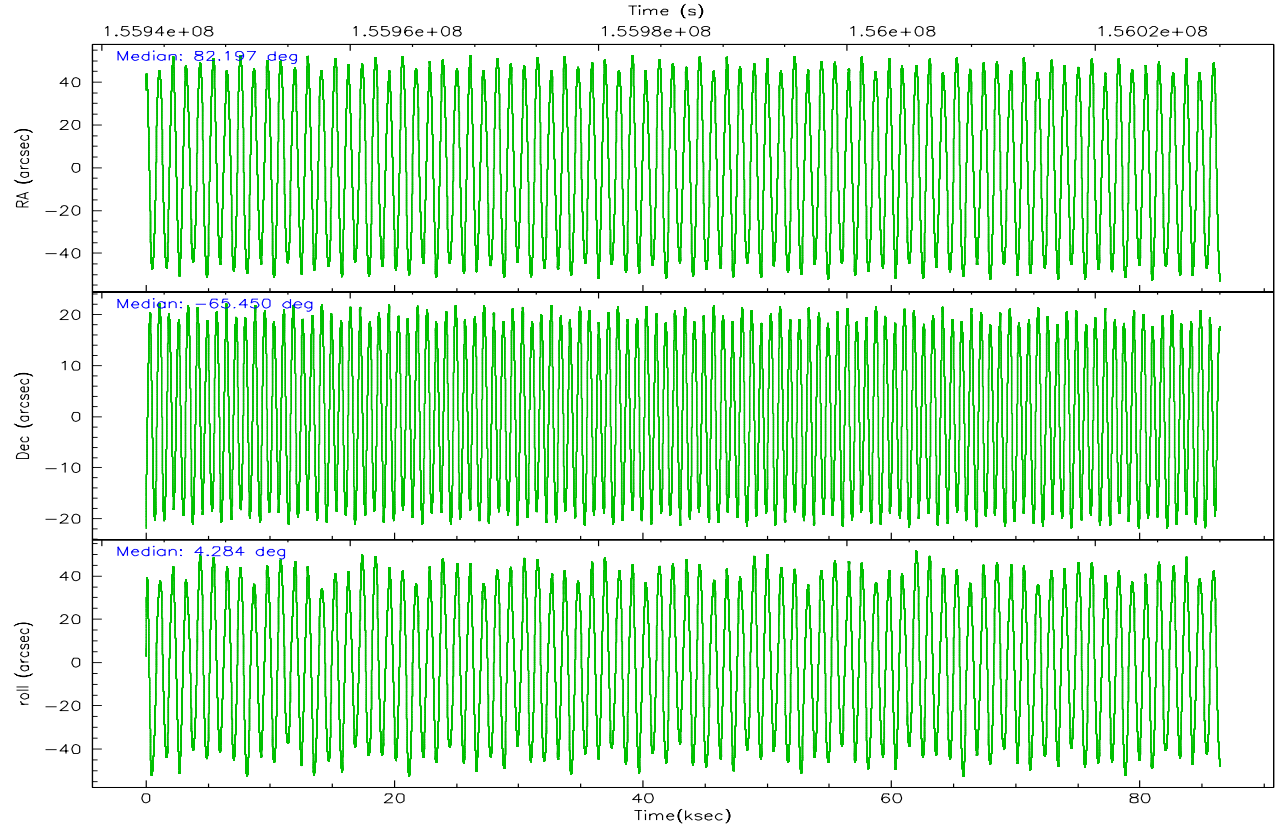
	segment 1	segment 2	segment 3
level 1 events	1793567	1873304	1798666
rejected events	386880	419752	471301
rejected %	21%	22%	26%

2.2 Compared Parameters

Parameter	Planned	Actual	Parameter	Planned	Actual
Instrument	HRC	HRC	Obspar format version number	6	6
Detector	HRC-S	HRC-S	Obspar file type	PREDICTED	ACTUAL
Grating	LETG	LETG	Obspar update status	NONE	UPDATED
Data mode	OBSERVING	OBSERVING			
Observation mode	POINTING	POINTING			
Pointing RA	82.141755	82.19661212108845			
Pointing Dec	-65.467636	-65.4503777643335			
Pointing Roll	4.173428	4.290657390707644			
Window start time	155728864.184000	155728864.184000			
Window stop time	156623464.184000	156623464.184000			
SIM focus pos (mm)	-1.429586	-1.428180813131781			
SIM defocus (mm)	0.1037507710433287	0.1051558262725154			
SIM translation stage pos (mm)	250.455976	250.466033080201			
SIM translation stage offset (mm)	0	-0.01005468664627074			
Observation start time	155943742.184000	155942718.01615			
Observation start date	2002-12-10T21:41:18	2002-12-10T21:25:18			
Observation end time	156029125.184000	156030806.51982			
Observation end date	2002-12-11T21:24:21	2002-12-11T21:53:26			

2.3 Aspect



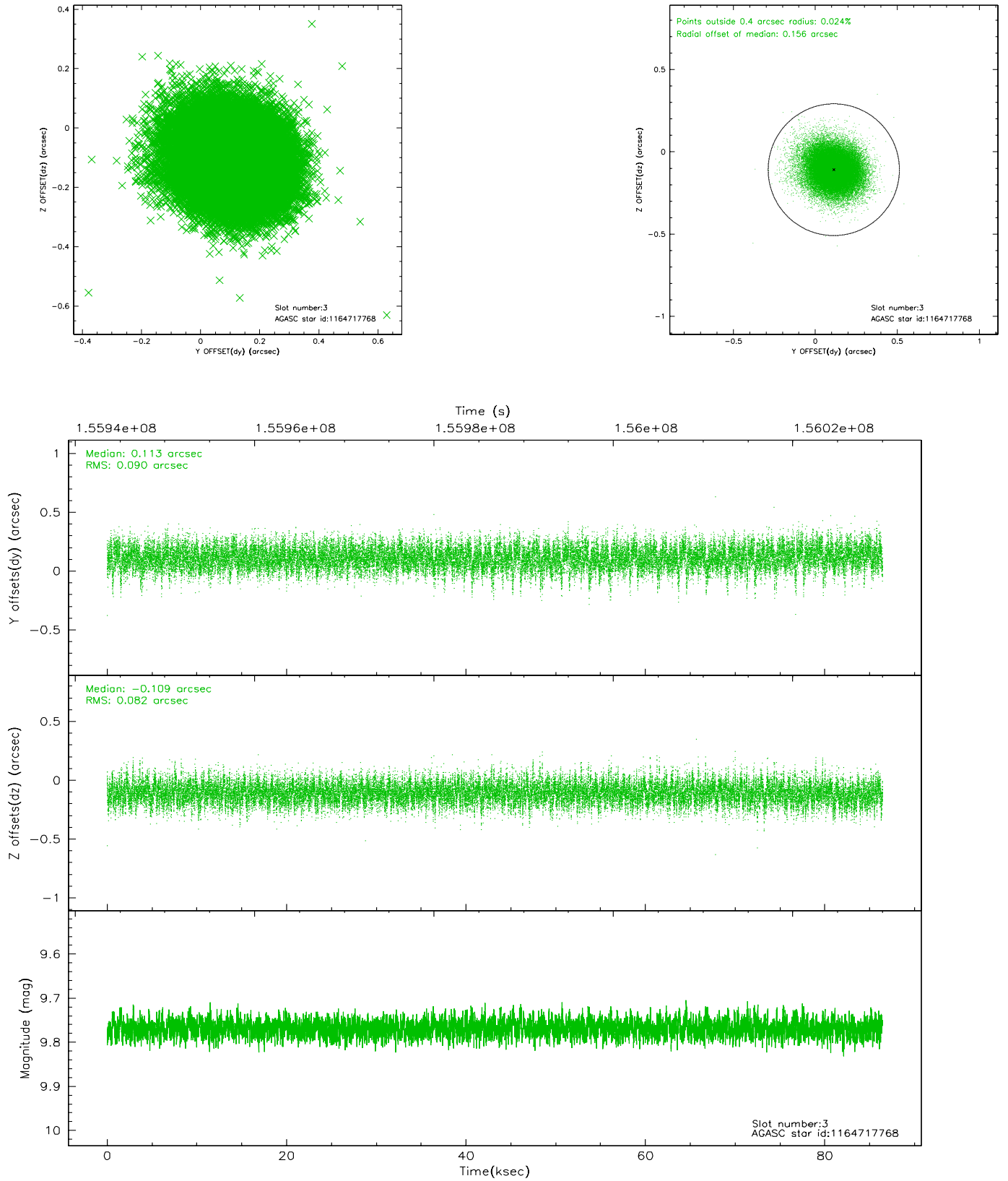


Slot Statistics

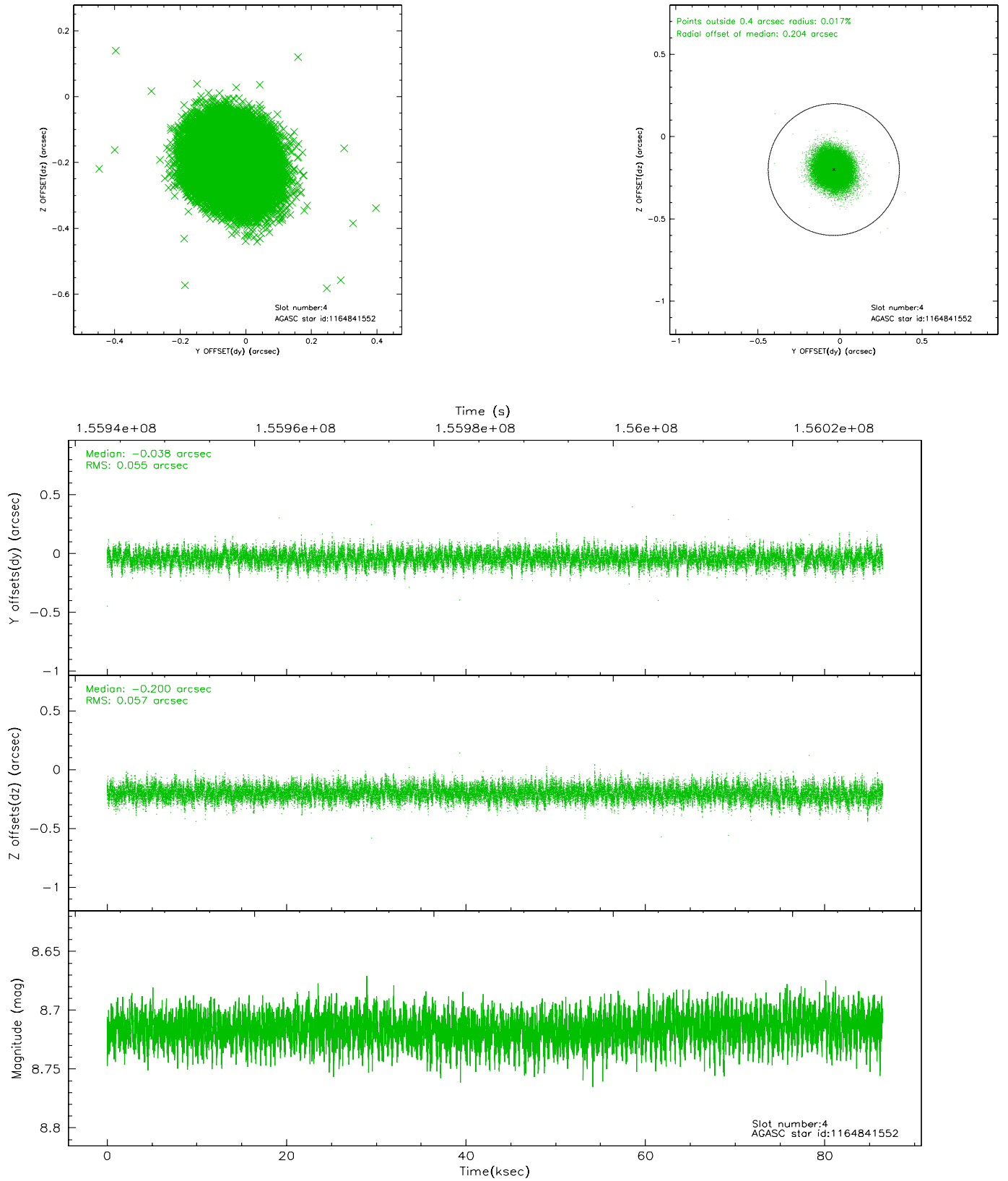
slot	status	id	mag	n_pts	med_dy	med_dz	dr1	dr2	ra	dec	mean_y	mean_z
0	FID	HRC-S-1	7.01	20983	0.157	-0.118	0.009	0.017	0.000000	0.000000	-1157.85	-456.02
1	FID	HRC-S-2	7.01	20986	0.079	-0.090	0.008	0.022	0.000000	0.000000	1241.69	-448.65
2	FID	HRC-S-3	7.03	20987	0.156	-0.094	0.015	0.026	0.000000	0.000000	-1160.52	573.52
3	GUIDE	1164717768	9.77	42075	0.113	-0.109	0.129	0.212	80.983833	-65.171015	-1668.84	1176.18
4	GUIDE	1164841552	8.72	42160	-0.038	-0.200	0.084	0.138	82.784410	-65.128342	1058.84	1142.68
5	GUIDE	1165366168	7.47	42167	-0.224	0.059	0.054	0.092	83.133276	-65.825610	1363.17	-1402.61
6	GUIDE	1165374200	9.85	42128	0.079	-0.031	0.144	0.266	83.207893	-65.682736	1519.15	-900.34
7	GUIDE	1165364760	10.16	42108	0.076	0.283	0.146	0.268	82.843855	-65.630408	997.29	-665.50

2.4 Star Slots

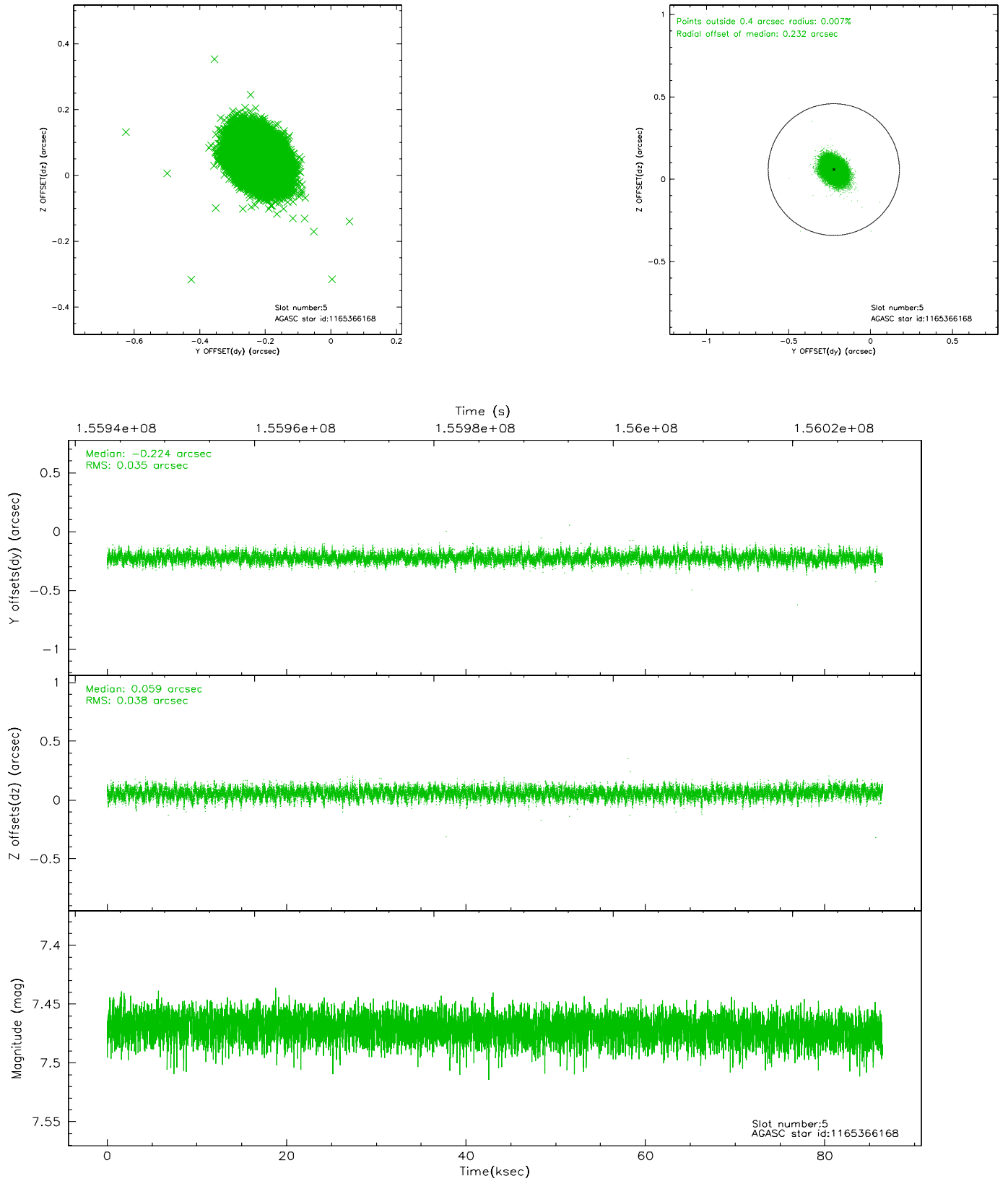
2.4.1 Slot 3



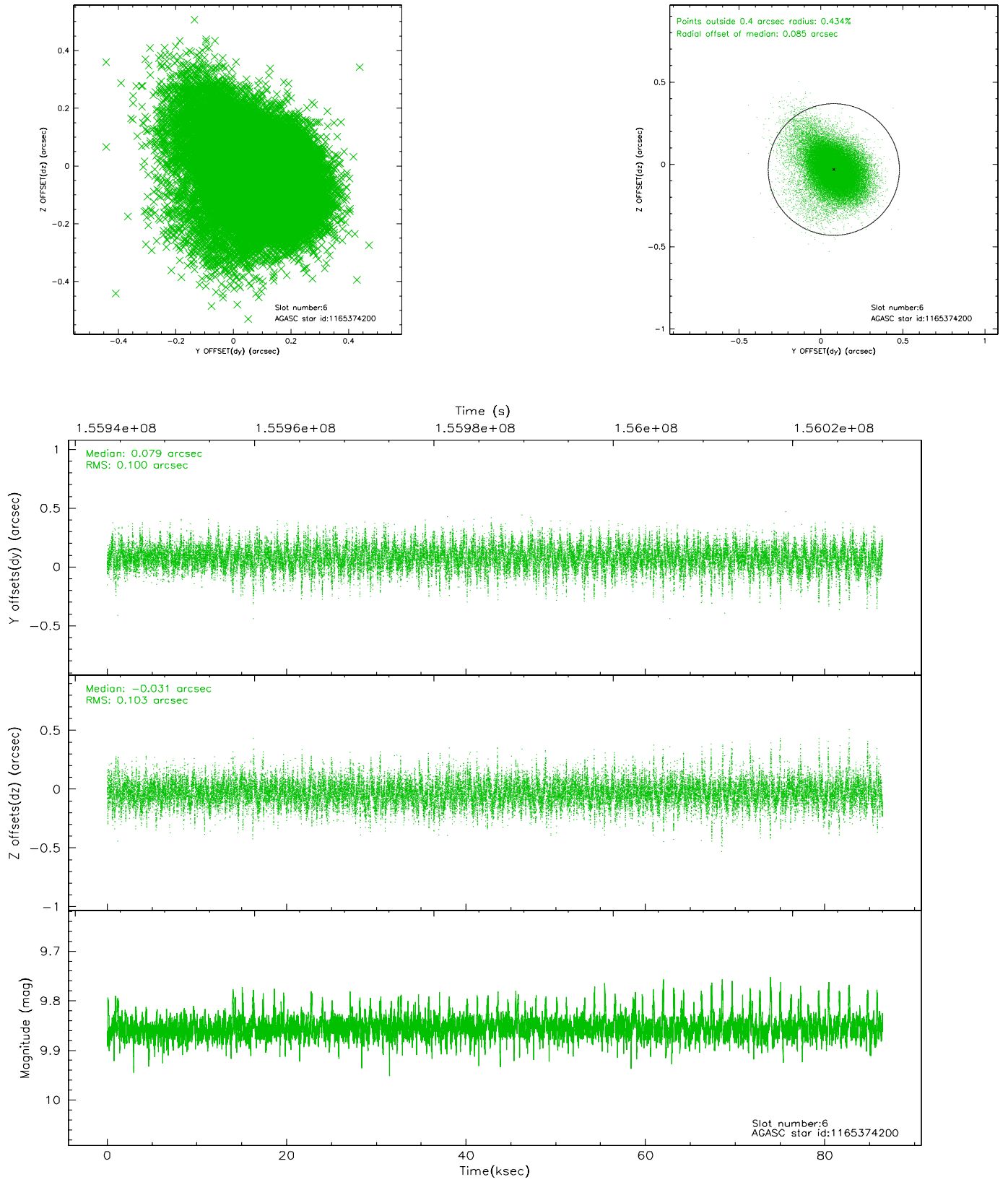
2.4.2 Slot 4



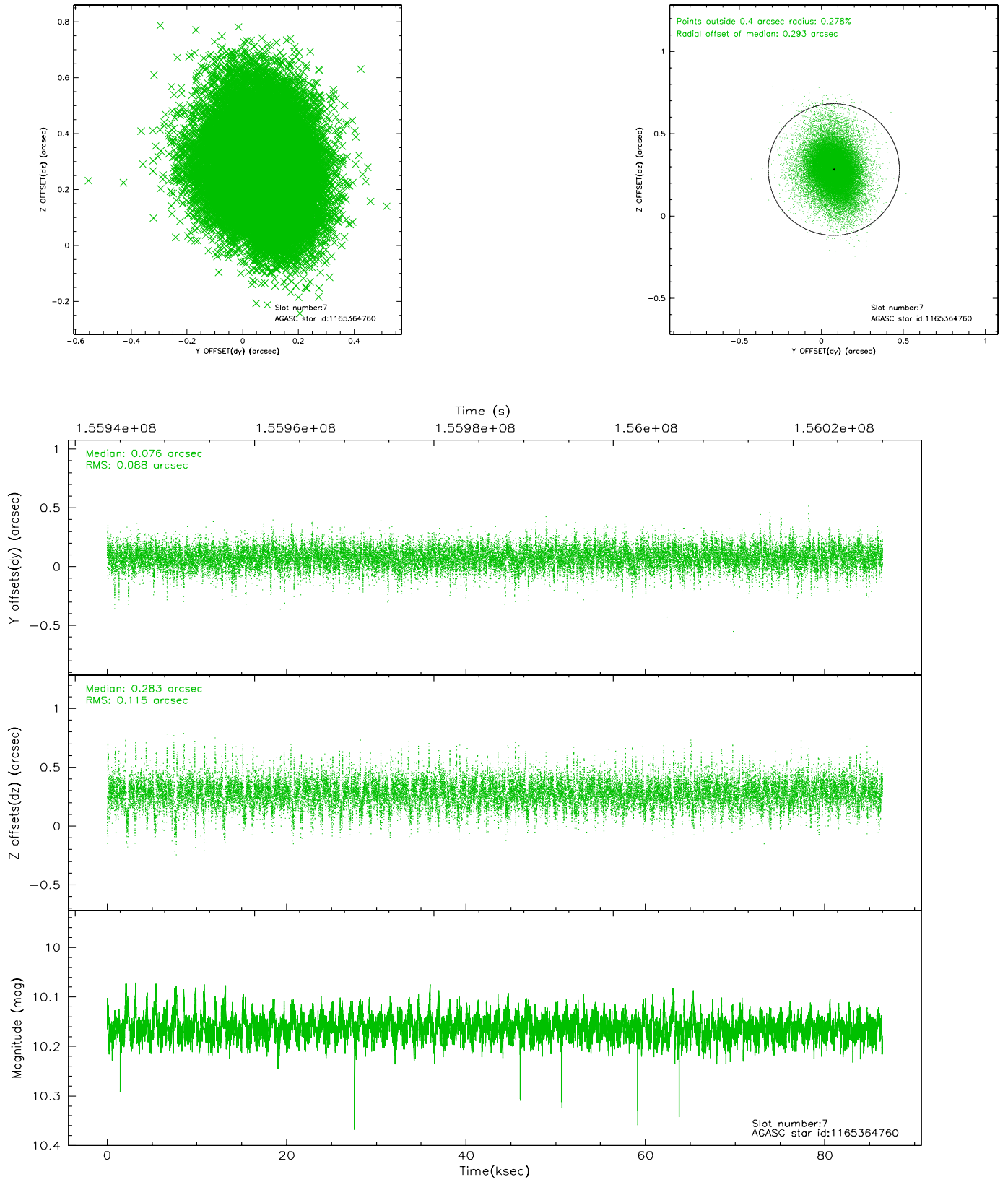
2.4.3 Slot 5



2.4.4 Slot 6

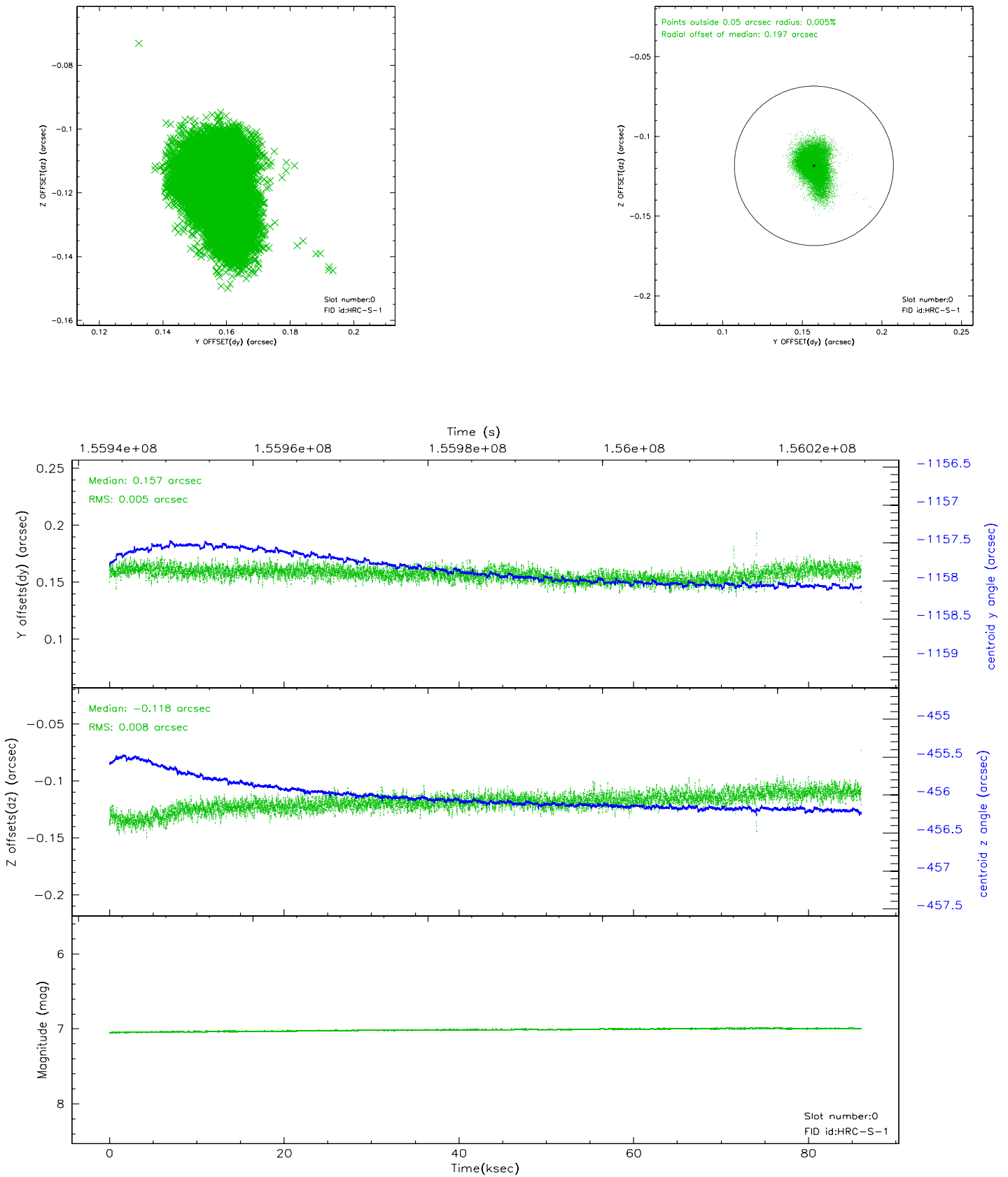


2.4.5 Slot 7

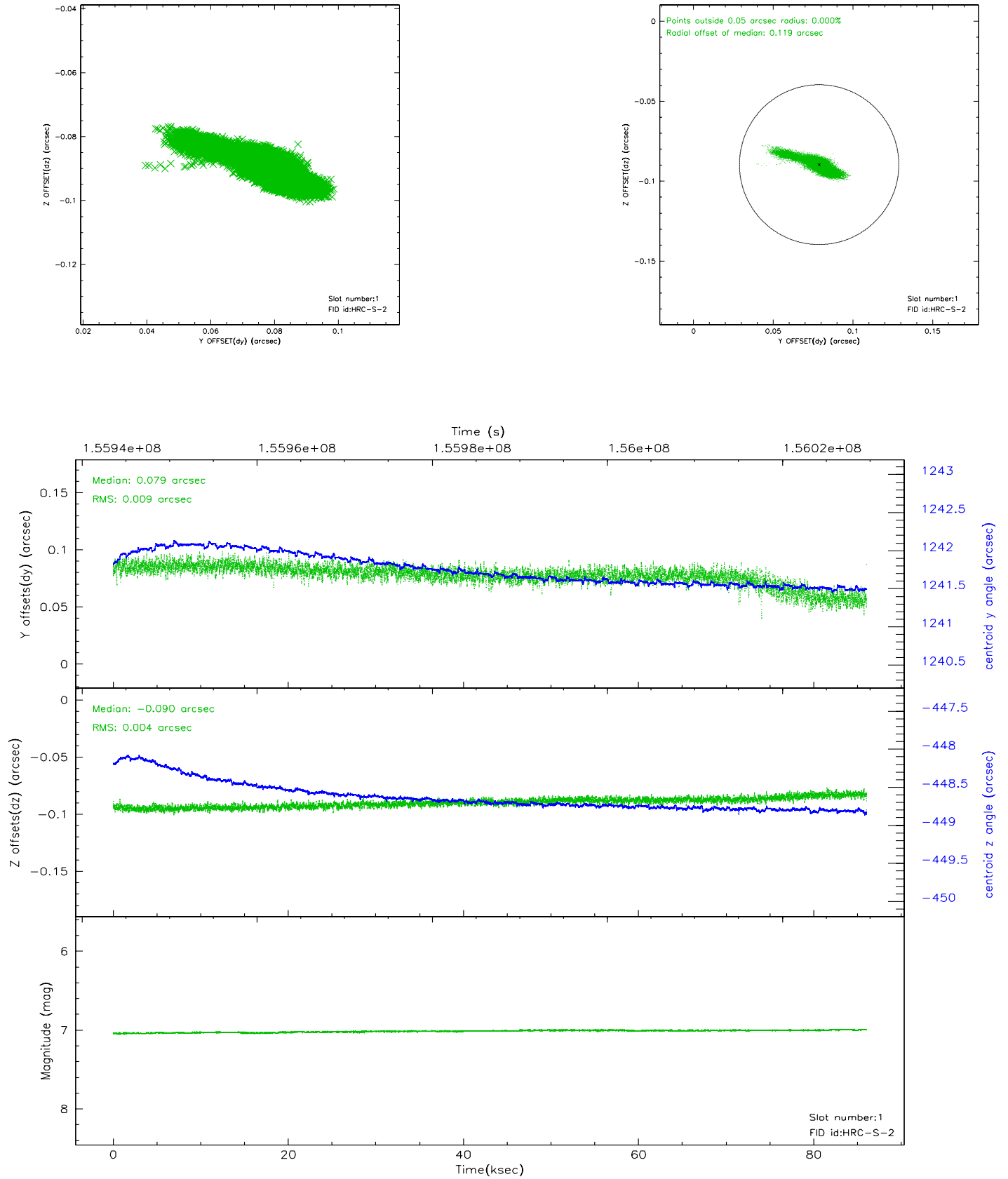


2.5 FID Slots

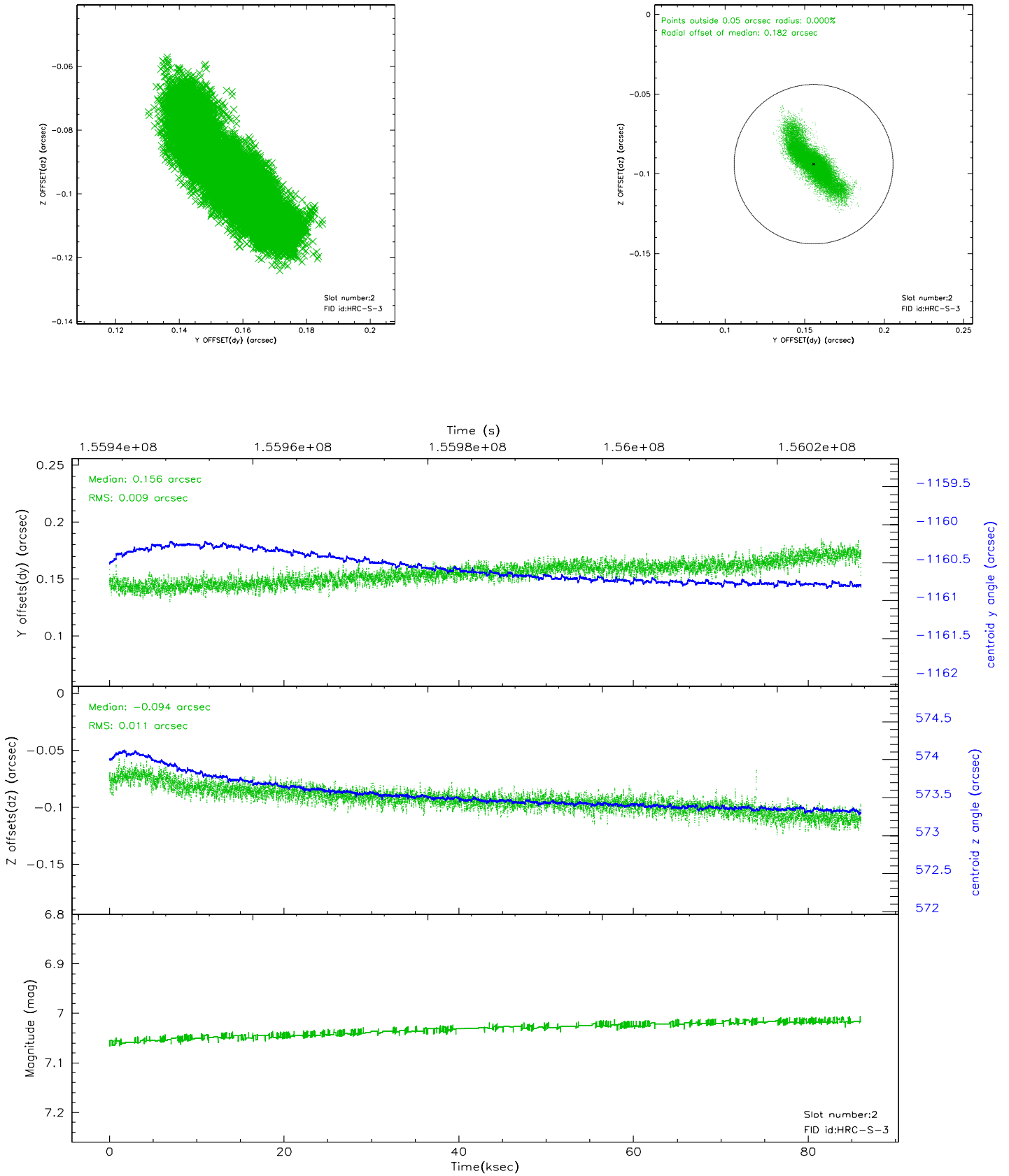
2.5.1 Slot 0



2.5.2 Slot 1

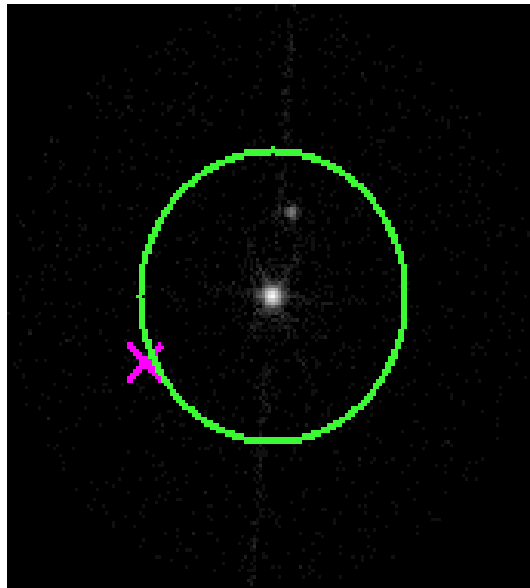


2.5.3 Slot 2



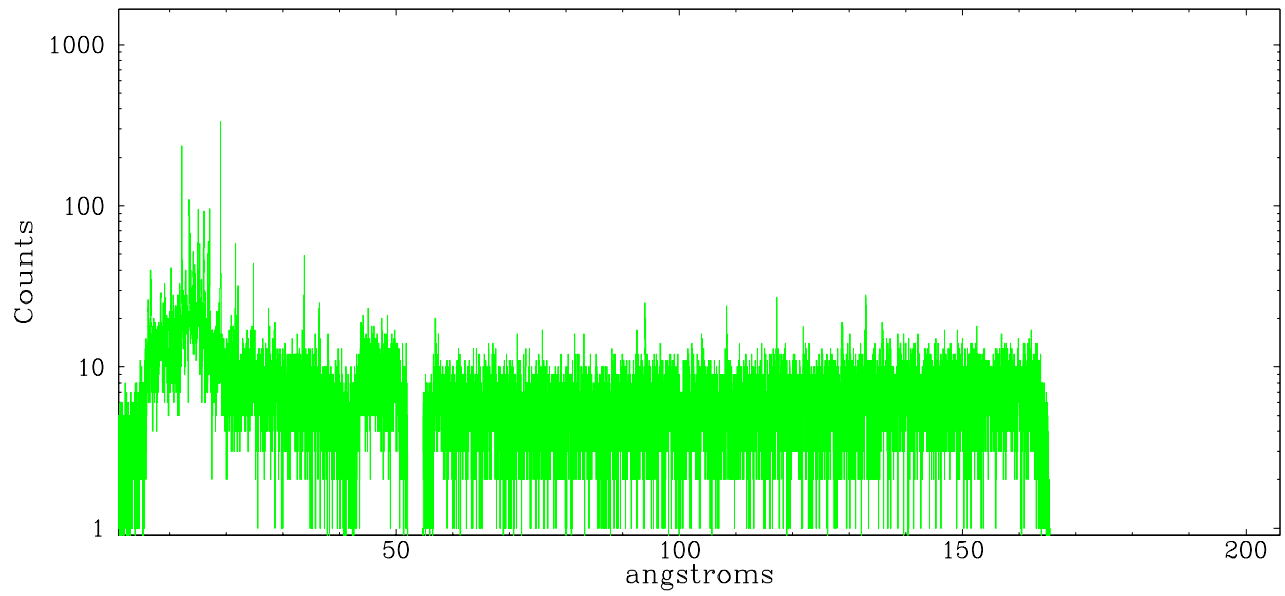
3 Gratings

3.1 LETG Arm

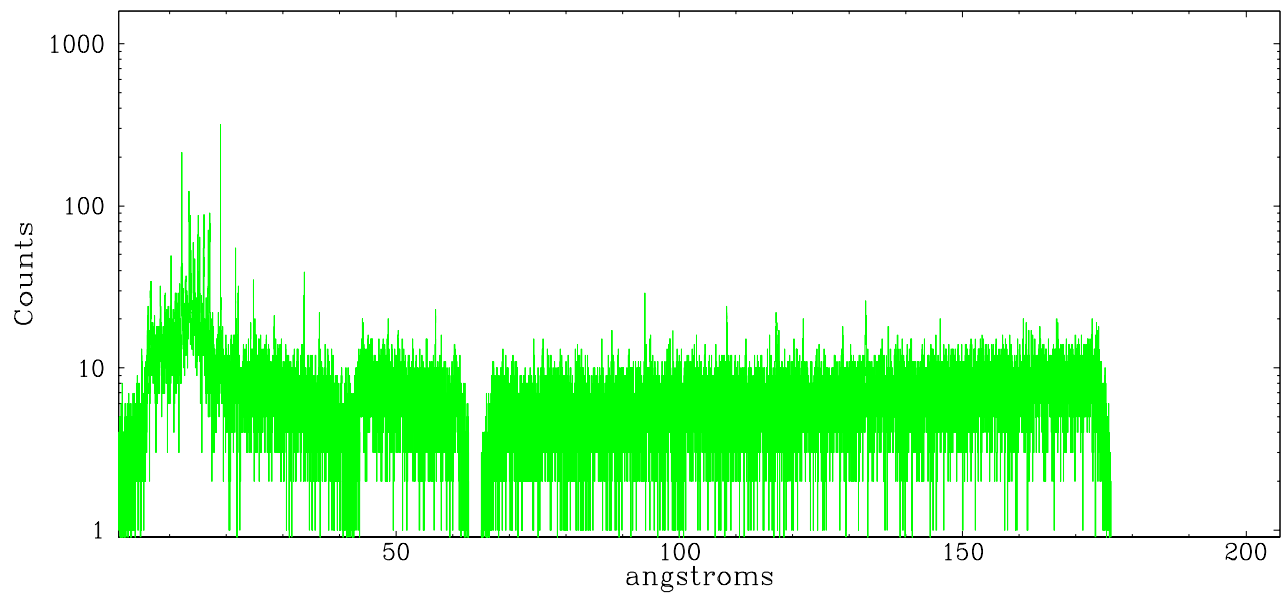


LETG Zero Order

leg order -1



leg order $+1$



A Summary

A.1 Status

V&V Scientist	Joy Nichols
V&V Date (YYYY-MM-DD)	2006.10.16
V&V Edition	1
V&V Disposition and Status	OK
V&V Charge Time	85.766

A.2 Comments

Coordinates requested by observer are slightly different from SIMBAD coordinates.

Zeroth order position is consistent with SIMBAD position of ra=05 28 44.8280,
dec=-65 26 54.85.

In addition to AD Dor, there is another faint X-ray source approximately 10 arcsec north of the target. There appears to be dispersed spectral data from this fainter source.