

V&V Reference Report

L2 ASCDS Version : 7.6.7.2

Observation 3750 - L2 Version 001
Chandra X-Ray Center

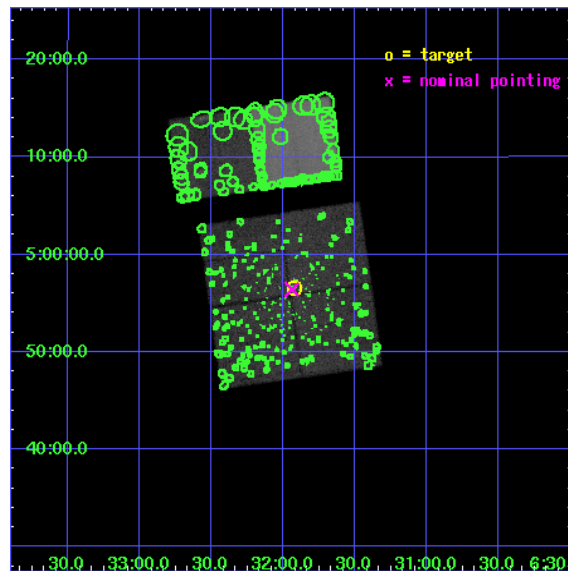
L2 Processing Date : Jun 8 2006

Contents

1	Front	2
2	OBI	3
2.1	OBI	3
2.1.1	Images	3
2.1.2	Bias	3
2.1.3	Parameters	4
2.1.4	Events	4
2.2	Compared Parameters	5
2.3	Aspect	6
2.4	Star Slots	9
2.4.1	Slot 3	9
2.4.2	Slot 4	10
2.4.3	Slot 5	11
2.4.4	Slot 6	12
2.4.5	Slot 7	13
2.5	FID Slots	14
2.5.1	Slot 0	14
2.5.2	Slot 1	15
2.5.3	Slot 2	16
3	Point Sources	17
A	Summary	18
A.1	Status	18
A.2	Comments	18

1 Front

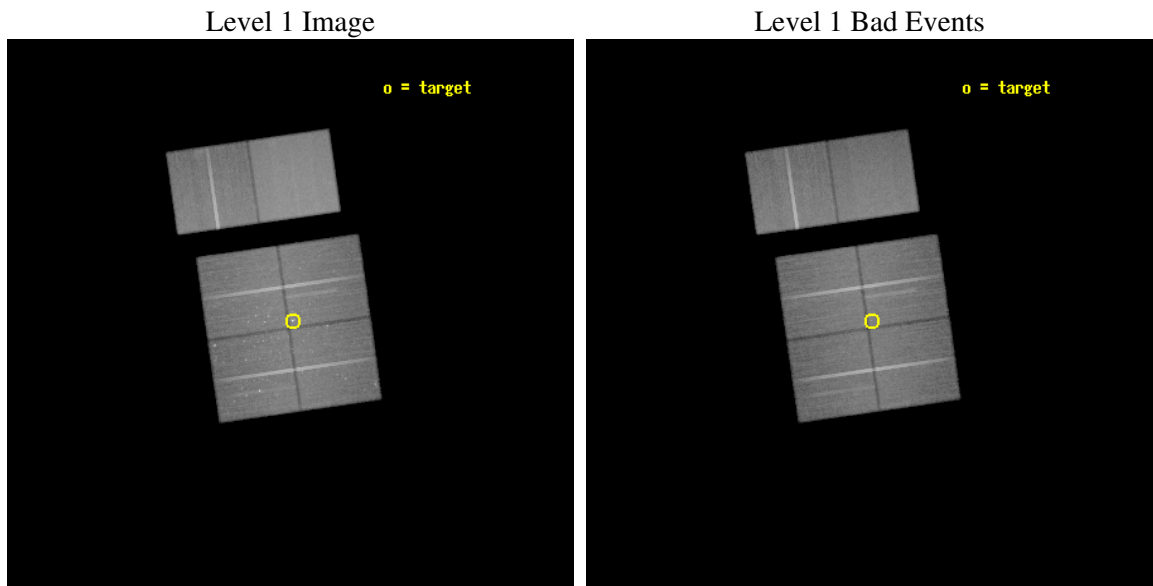
seq_num	200220
obs_id	3750
title	DISCOVERY OF PARSEC-SCALE OB WIND-SWEPT BUBBLES IN HII REGIONS
observer	Dr. Leisa Townsley
object	ROSETTE NEBULA / NGC 2244
dtcycle	0
cycle	P
ra_targ	97.98125
dec_targ	4.942778
ra_nom	97.985223513669
dec_nom	4.9403883127955
roll_nom	351.86564514721
revision	2
ontime	75961.517716557
livetime	74999.647240695
ontime0	75964.758726716
ontime1	75964.758706808
ontime2	75964.7587367
ontime3	75961.517716557
ontime6	75967.999716997
ontime7	75967.999716997
l2events	532038



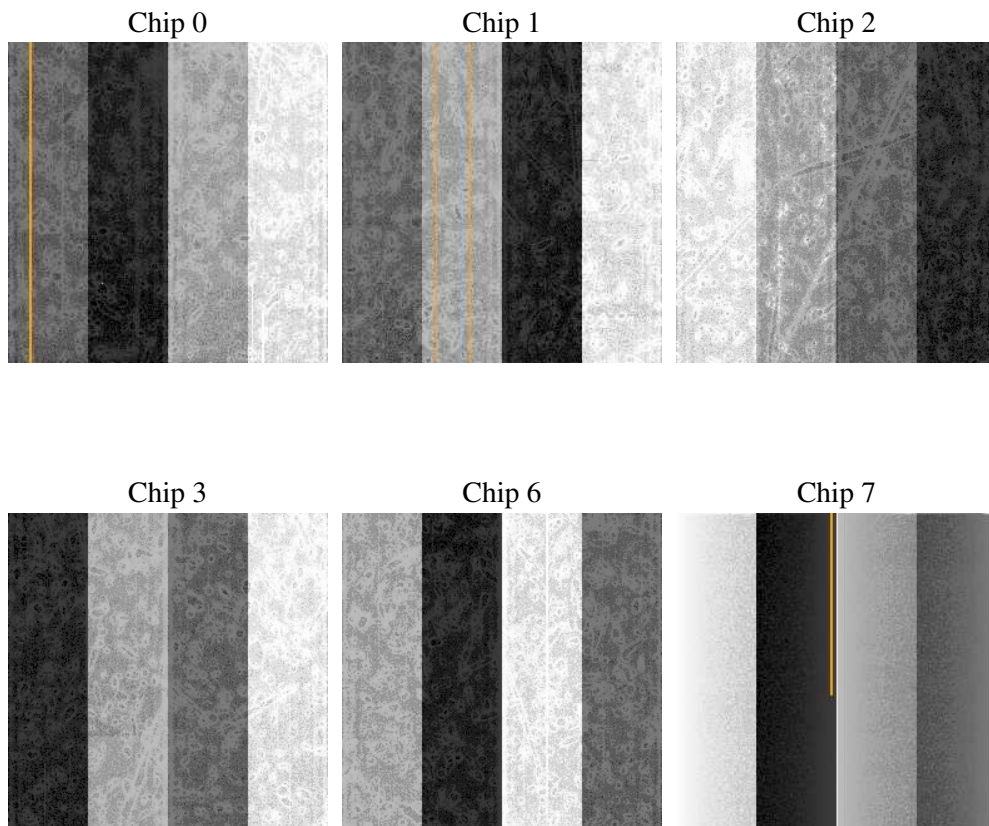
2 OBI

2.1 OBI

2.1.1 Images



2.1.2 Bias



2.1.3 Parameters

obi_num	0
ascdsver	7.6.7.2
caldsver	3.2.2
date	2006-06-08T18:13:06
revision	2

sched_exp_time	75837.158000
ontime	77842.588935405
ontime0	77845.829945564
ontime1	77845.829925656
ontime2	77845.829955548
ontime3	77842.588935405
ontime6	77849.070935845
ontime7	77849.070935845
l1events	3041906

2.1.4 Events

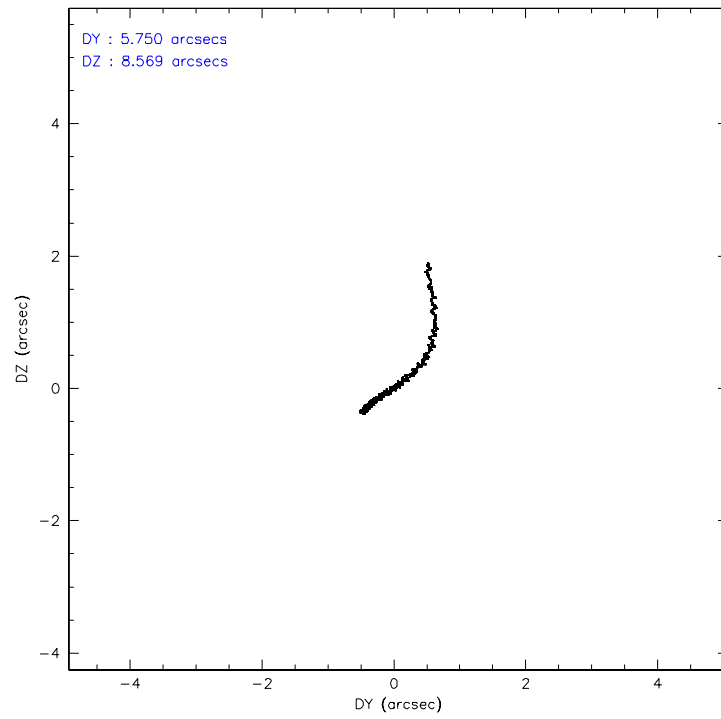
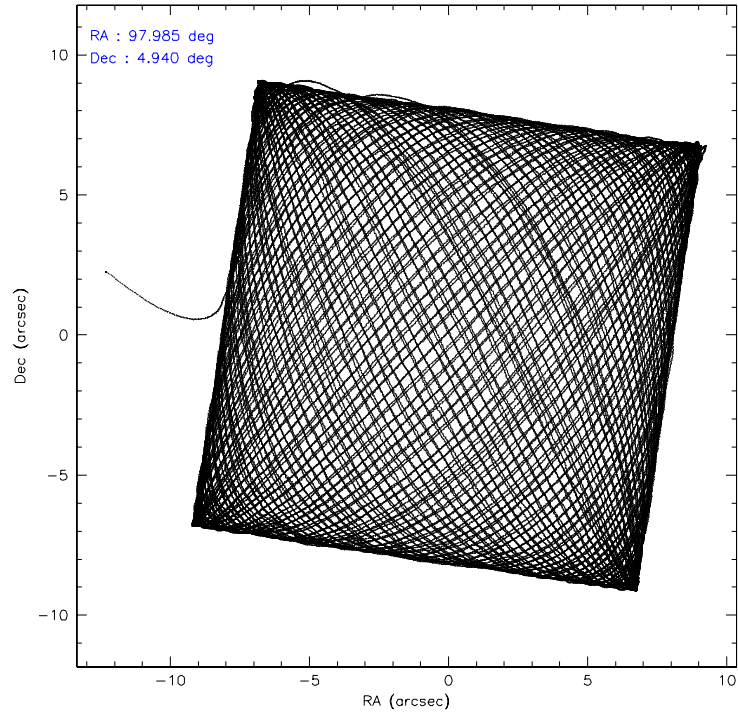
	ccd 0	ccd 1	ccd 2	ccd 3	ccd 6	ccd 7
level 1 events	455270	453791	488003	479138	498434	667270
rejected events	382571	385412	424864	413314	439563	417545
rejected %	84%	84%	87%	86%	88%	62%

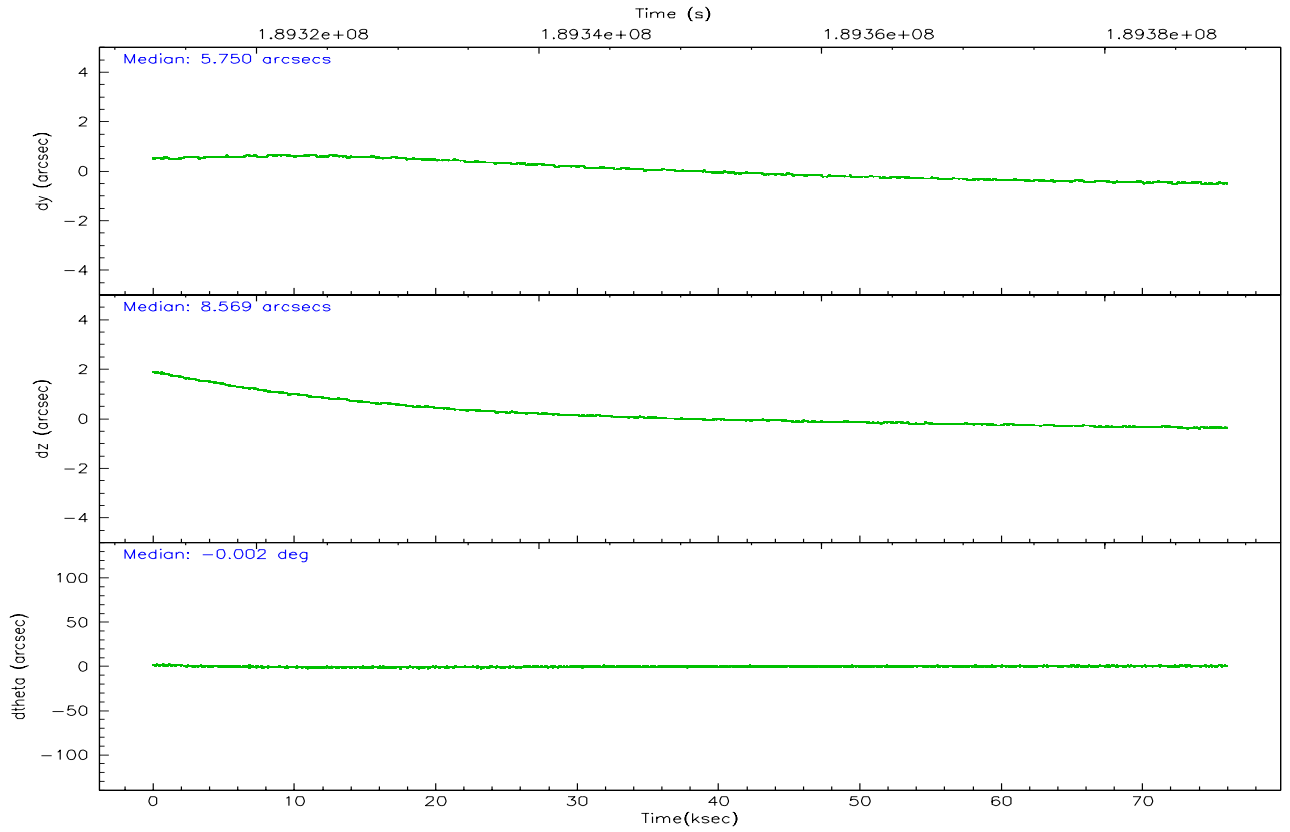
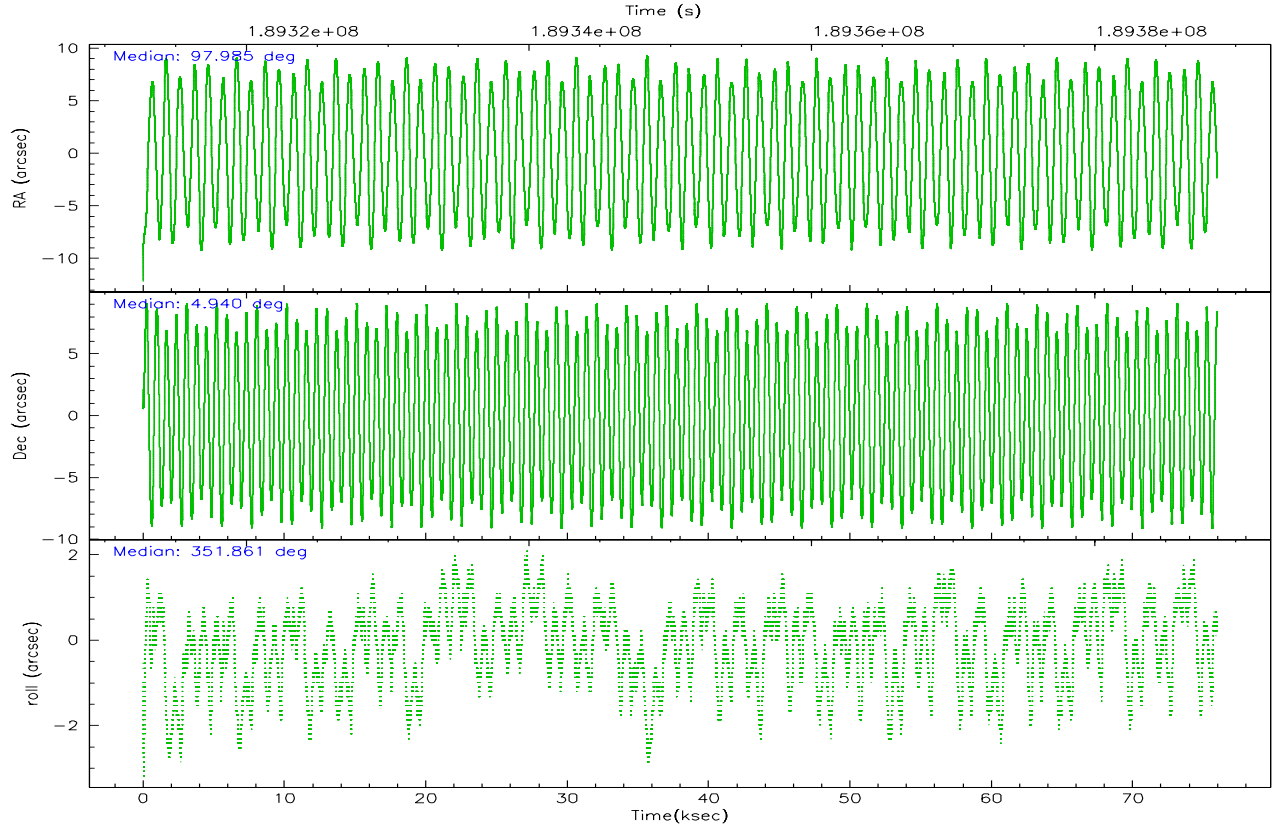
	ccd 0	ccd 1	ccd 2	ccd 3	ccd 6	ccd 7
grade 0 events	37873	31295	31614	33969	24387	14968
	8%	6%	6%	7%	4%	2%
grade 1 events	290	265	318	373	241	386
	0%	0%	0%	0%	0%	0%
grade 2 events	13823	13801	12372	11477	12388	62641
	3%	3%	2%	2%	2%	9%
grade 3 events	6200	6212	5560	5916	5870	12866
	1%	1%	1%	1%	1%	1%
grade 4 events	5810	6283	5529	5746	5619	12974
	1%	1%	1%	1%	1%	1%
grade 5 events	20013	20603	18991	21583	23218	43844
	4%	4%	3%	4%	4%	6%
grade 6 events	10405	12242	9447	10135	12050	152325
	2%	2%	1%	2%	2%	22%
grade 7 events	360856	363090	404172	389939	414661	367266
	79%	80%	82%	81%	83%	55%

2.2 Compared Parameters

Parameter	Planned	Actual	Parameter	Planned	Actual
Instrument	ACIS	ACIS	Obspar format version number	6	6
Detector	ACIS-012367	ACIS-012367	Obspar file type	PREDICTED	ACTUAL
Grating	NONE	NONE	Obspar update status	NONE	UPDATED
Data mode	VFAINT	VFAINT	On-chip summing requested	N	N
Observation mode	POINTING	POINTING	Subarray requested	NONE	NONE
Pointing RA	97.959766	97.98522351366877	Alternating exposures requested	N	N
Pointing Dec	4.930075	4.940388312795478	Primary exposure time	0.000000	3.2
Pointing Roll	351.659150	351.8656451472133			
SIM focus pos (mm)	-0.782348	-0.7809083437167272			
SIM defocus (mm)	0	0.001439871863259334			
SIM translation stage pos (mm)	-233.592463	-233.5874344608287			
SIM translation stage offset (mm)	0	-0.005018542100998502			
Observation start time	189312828.184000	189310814.41082			
Observation start date	2004-01-01T02:52:44	2004-01-01T02:20:14			
Observation end time	189388665.184000	189388979.37672			
Observation end date	2004-01-01T23:56:41	2004-01-02T00:02:59			
Read mode	TIMED	TIMED			

2.3 Aspect



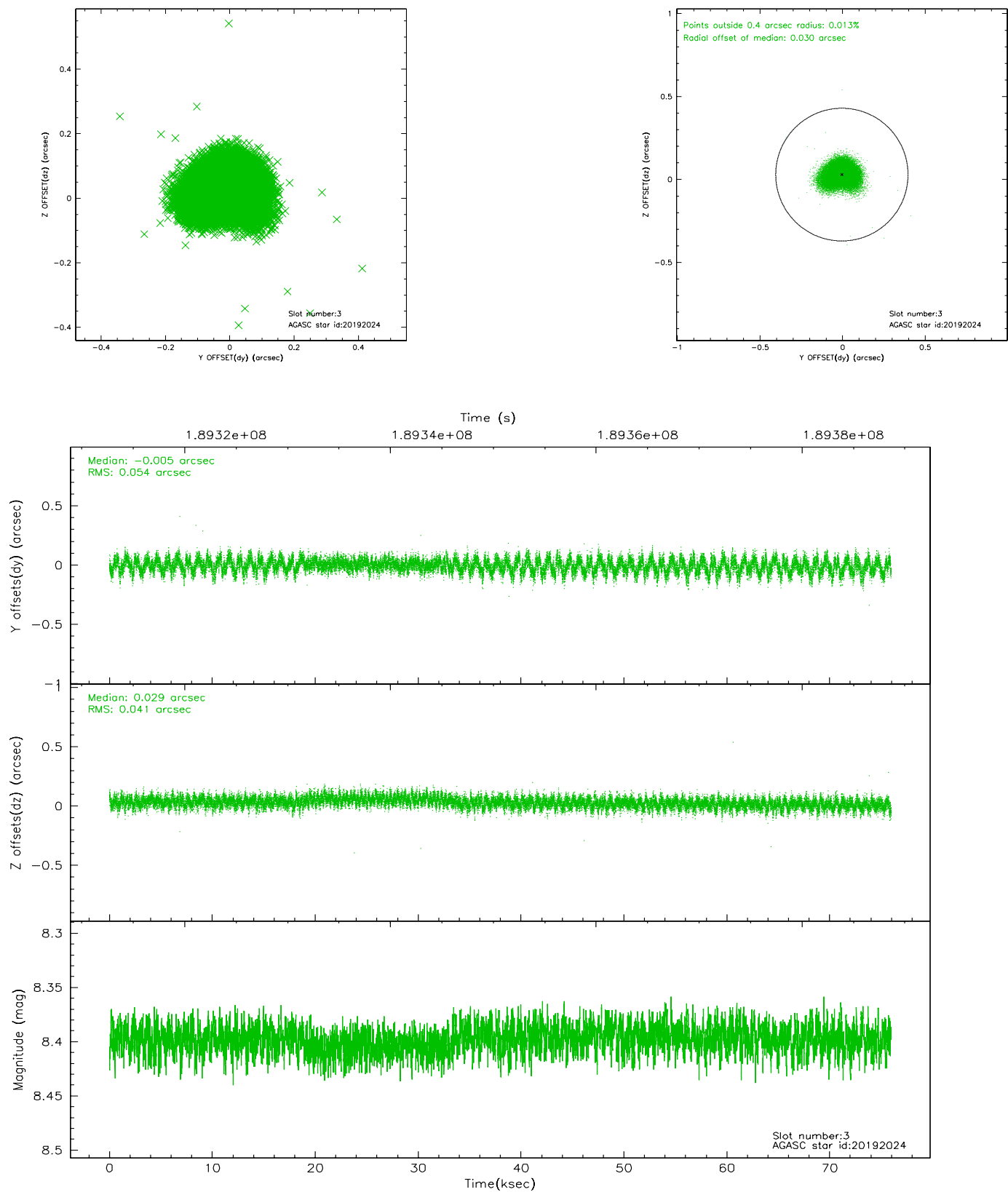


Slot Statistics

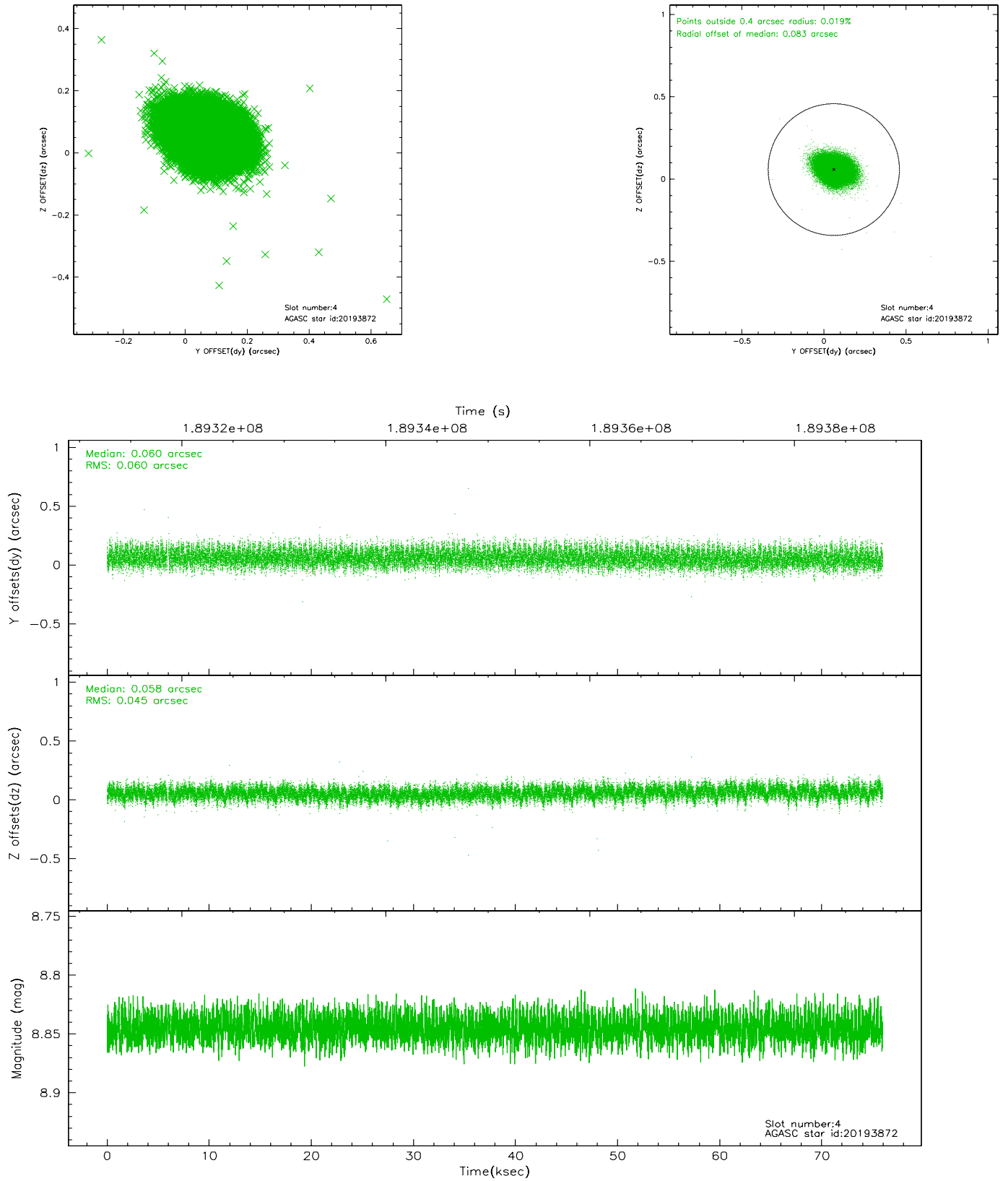
slot	status	id	mag	n_pts	med_dy	med_dz	dr1	dr2	ra	dec	mean_y	mean_z
0	FID	ACIS-I-1	7.24	18530	-0.005	0.063	0.015	0.028	0.000000	0.000000	933.90	-832.17
1	FID	ACIS-I-5	7.23	18530	-0.117	0.037	0.014	0.022	0.000000	0.000000	-1814.35	1065.33
2	FID	ACIS-I-6	7.26	18530	0.032	-0.032	0.014	0.041	0.000000	0.000000	399.56	1709.70
3	GUIDE	20192024	8.40	37056	-0.005	0.029	0.072	0.119	98.533476	5.116349	1938.30	963.18
4	GUIDE	20193872	8.85	36990	0.060	0.058	0.080	0.129	98.412125	4.225634	1975.51	-2272.69
5	GUIDE	20194960	7.69	37061	0.035	0.007	0.055	0.089	97.758599	4.508135	-493.16	-1607.79
6	GUIDE	20204256	7.93	37054	0.062	-0.093	0.068	0.107	97.968888	5.033108	-21.01	371.78
7	GUIDE	18499816	9.35	37041	-0.155	0.003	0.096	0.158	97.222993	4.412517	-2346.17	-2225.83

2.4 Star Slots

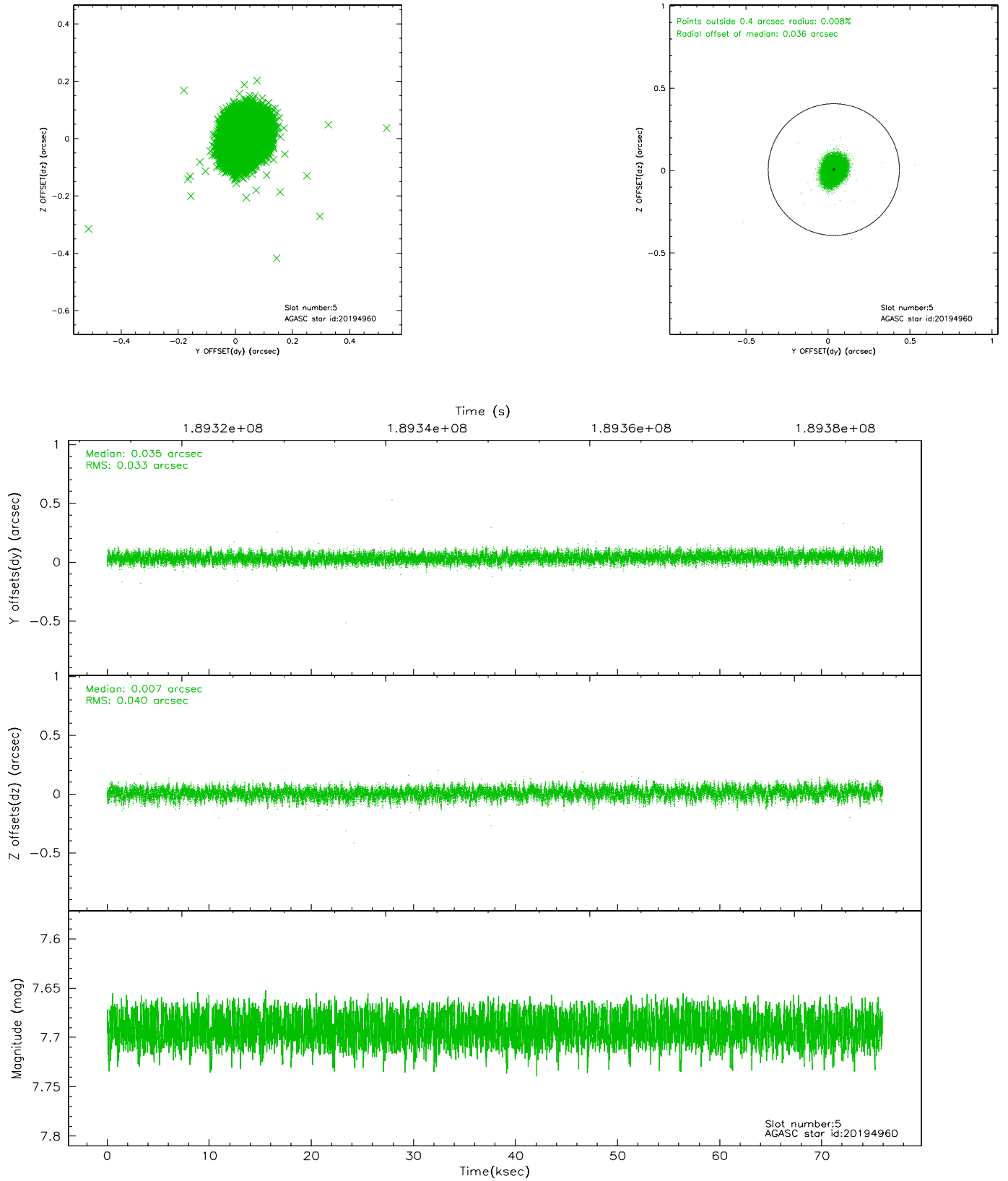
2.4.1 Slot 3



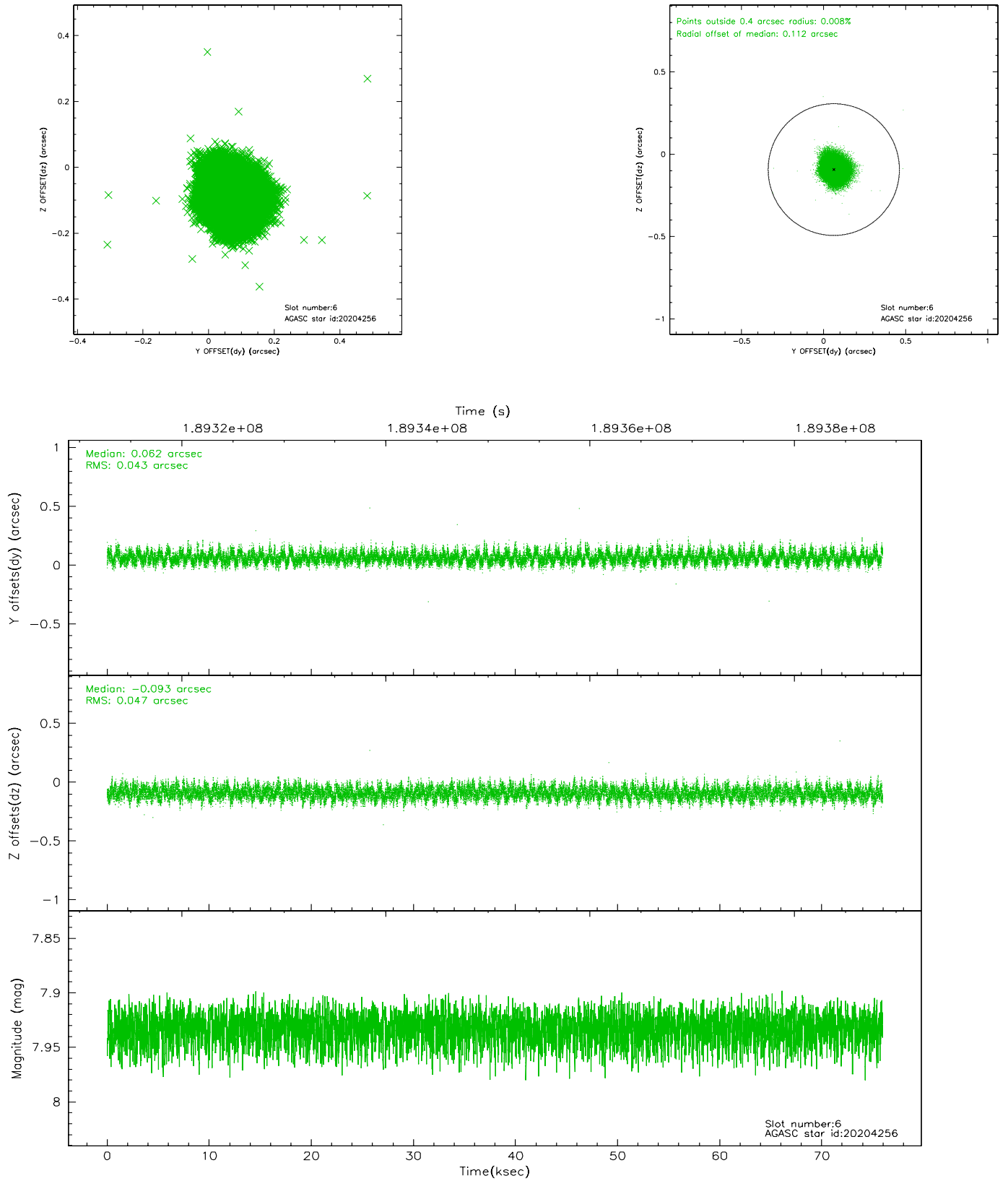
2.4.2 Slot 4



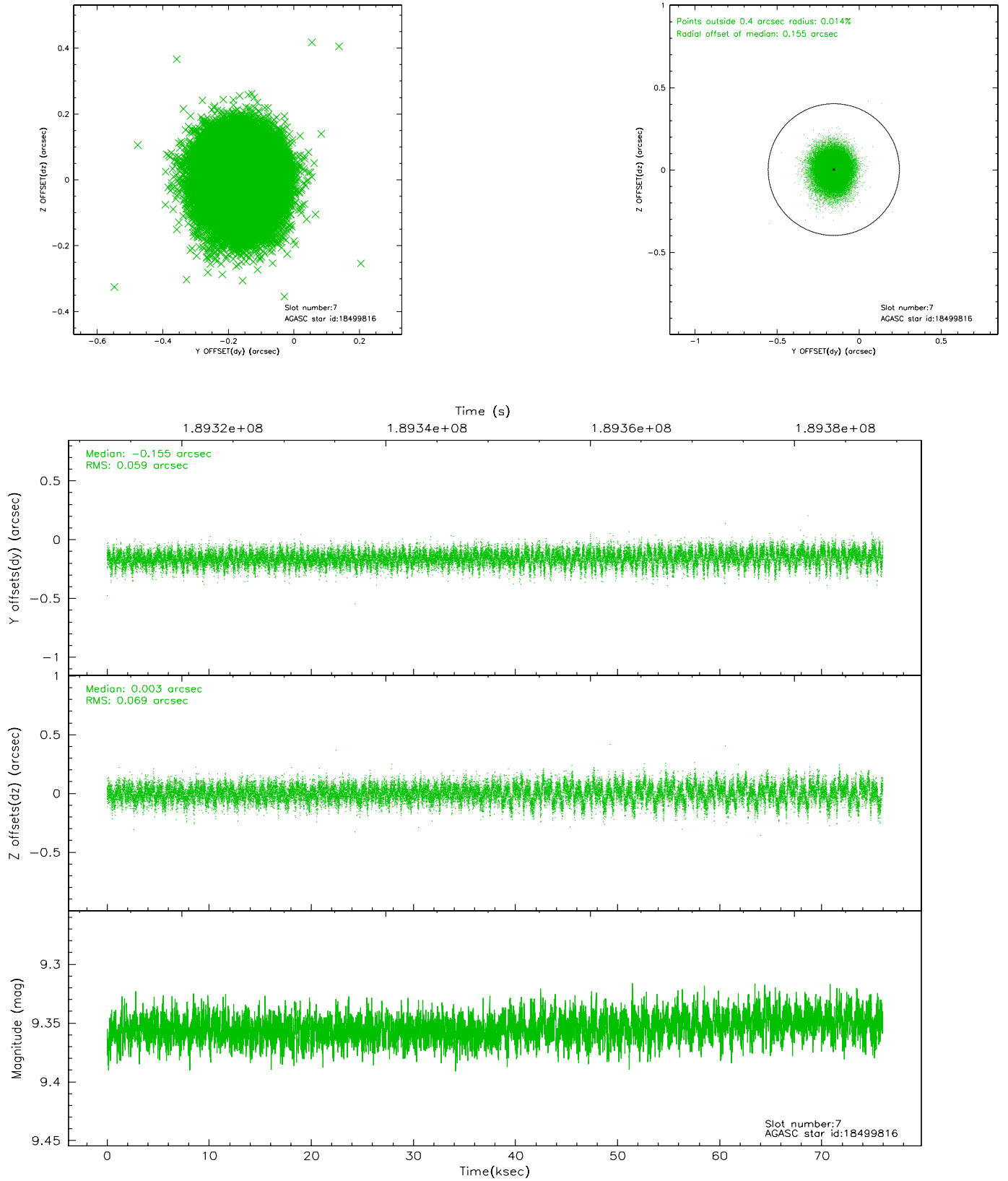
2.4.3 Slot 5



2.4.4 Slot 6

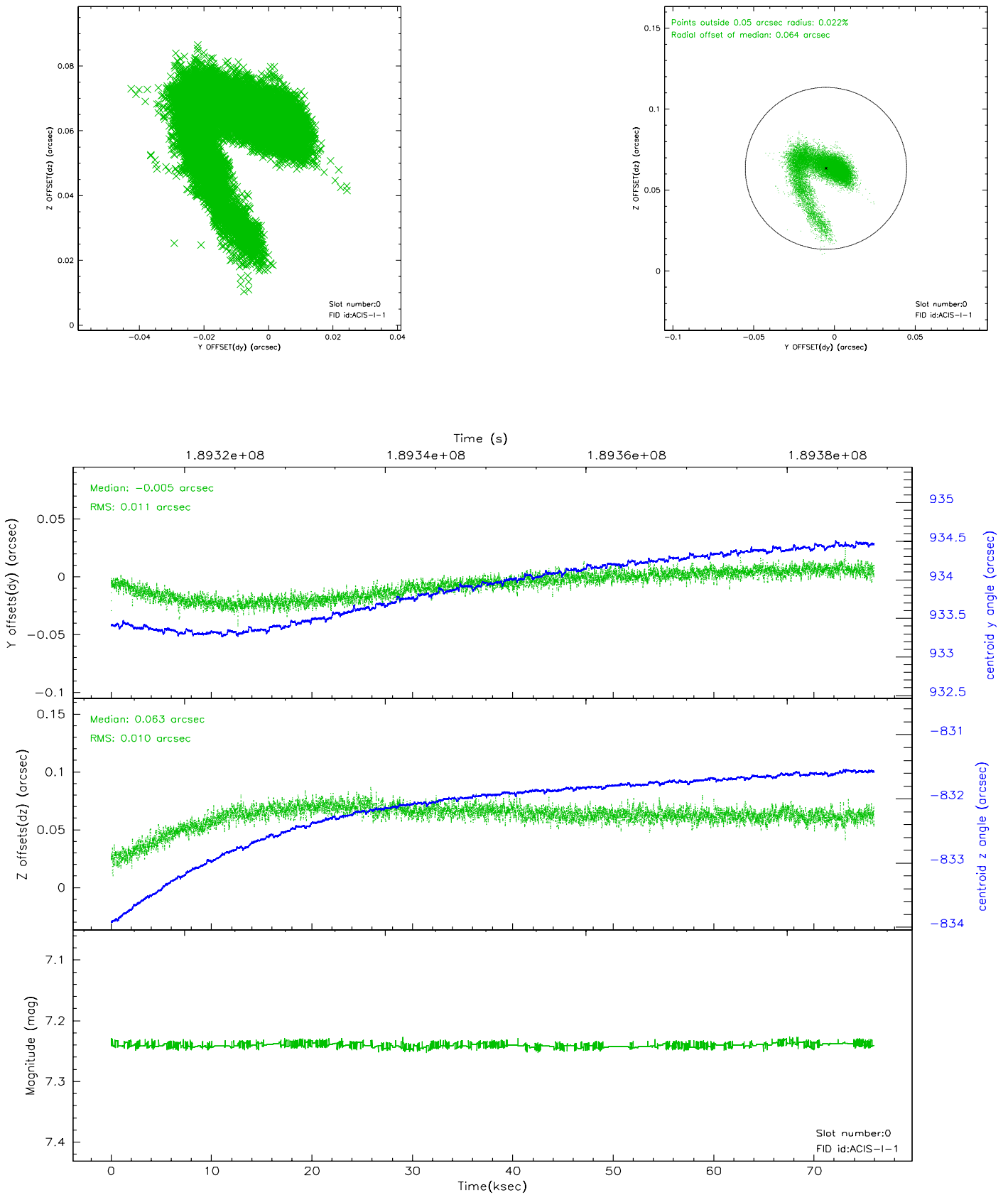


2.4.5 Slot 7

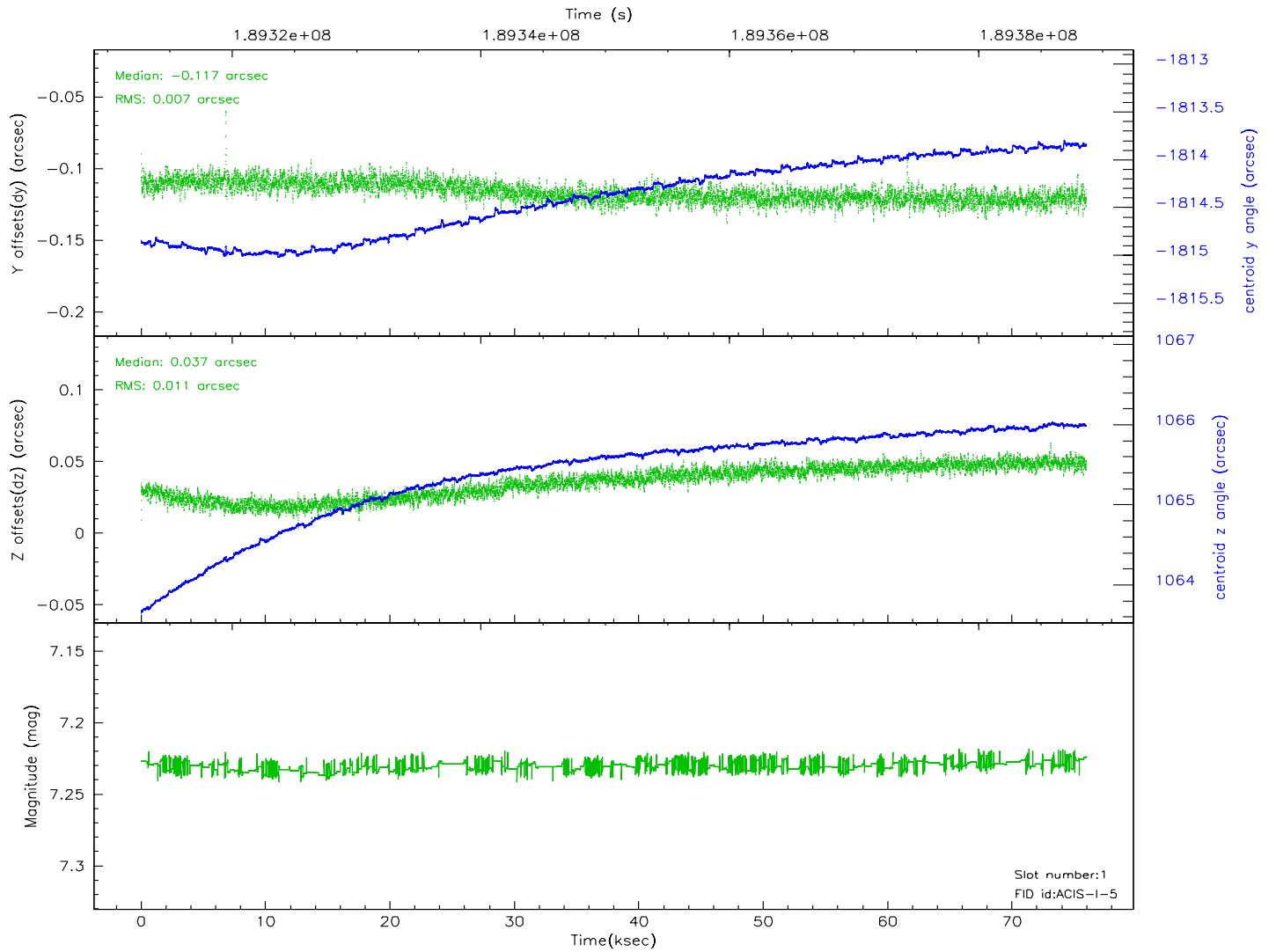
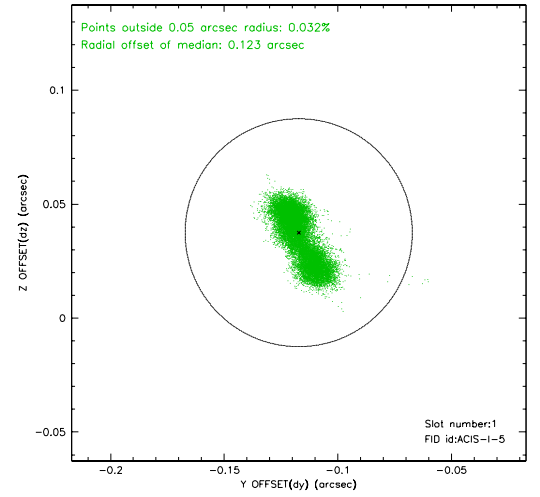
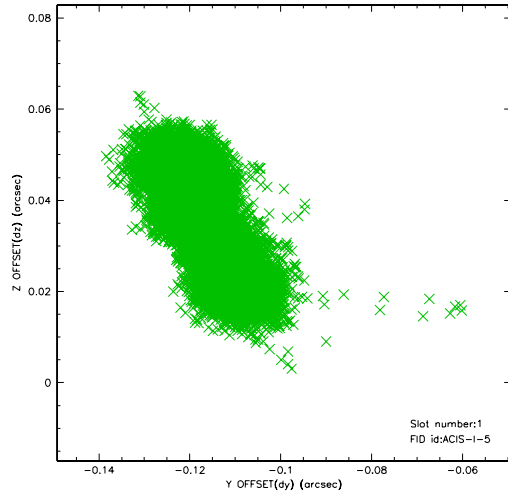


2.5 FID Slots

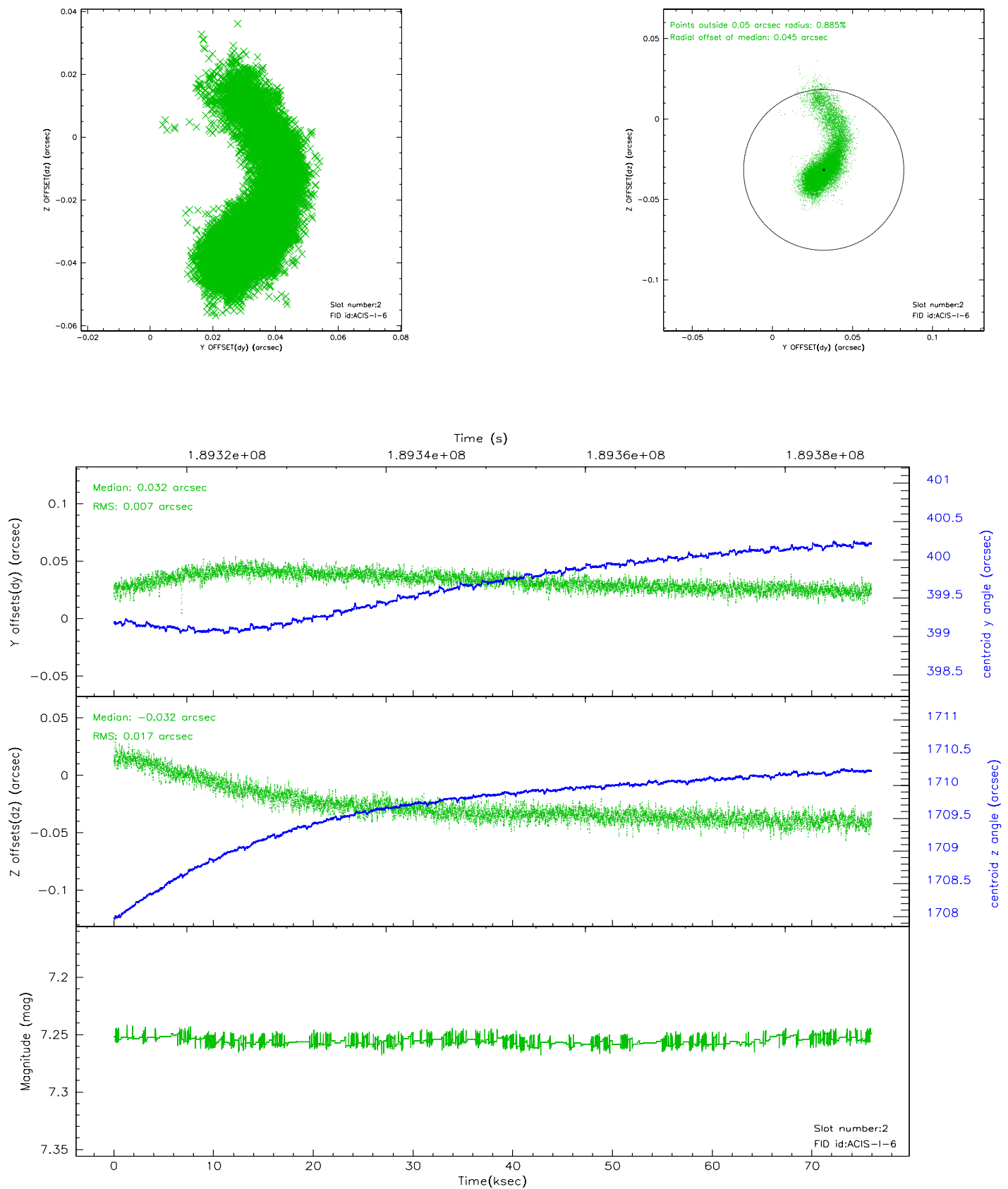
2.5.1 Slot 0



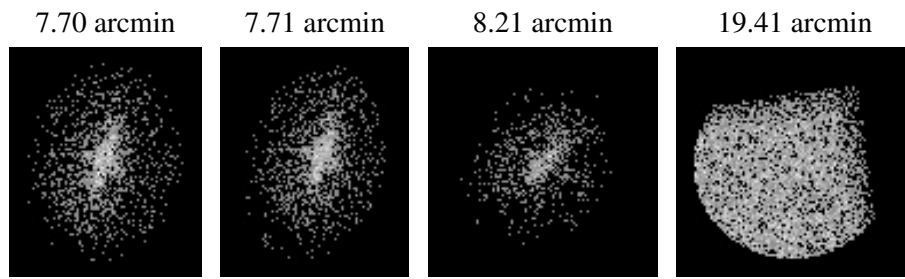
2.5.2 Slot 1



2.5.3 Slot 2



3 Point Sources



A Summary

A.1 Status

V&V Scientist	Beth Sundheim
V&V Date (YYYY-MM-DD)	2006.06.09
V&V Edition	1
V&V Disposition and Status	OK
V&V Charge Time	75.961

A.2 Comments