

V&V Reference Report

L2 ASCDS Version : 7.6.8.1

Observation 3409 - L2 Version 001
Chandra X-Ray Center

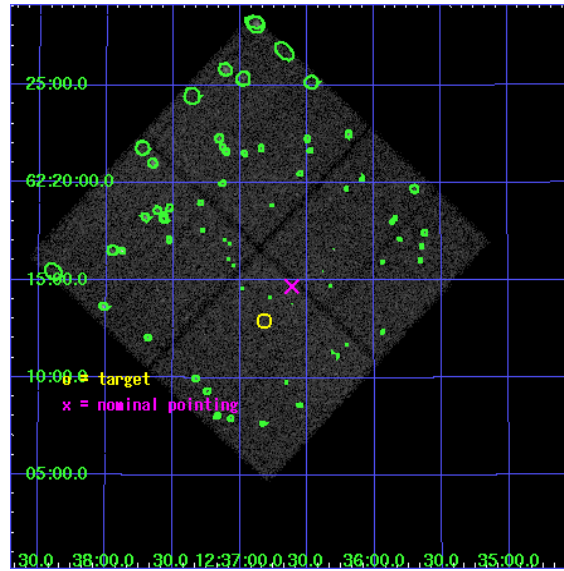
L2 Processing Date : Sep 1 2006

Contents

1	Front	2
2	OBI	3
2.1	OBI	3
2.1.1	Images	3
2.1.2	Bias	3
2.1.3	Parameters	4
2.1.4	Events	4
2.2	Compared Parameters	5
2.3	Aspect	6
2.4	Star Slots	9
2.4.1	Slot 3	9
2.4.2	Slot 4	10
2.4.3	Slot 5	11
2.4.4	Slot 6	12
2.4.5	Slot 7	13
2.5	FID Slots	14
2.5.1	Slot 0	14
2.5.2	Slot 1	15
2.5.3	Slot 2	16
3	Point Sources	17
A	Summary	18
A.1	Status	18
A.2	Comments	18

1 Front

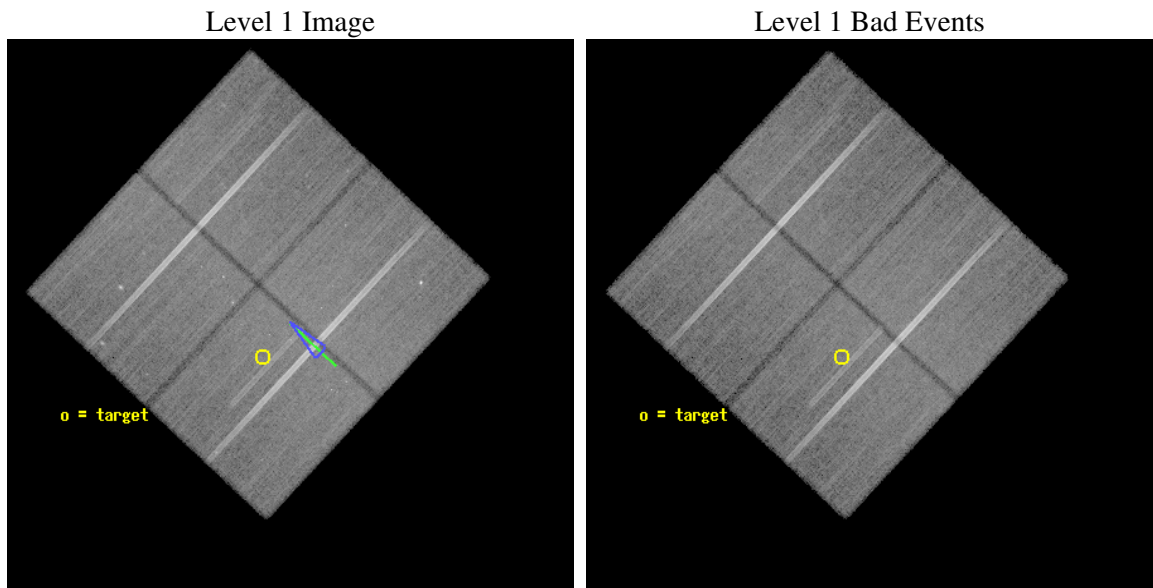
seq_num	900133
obs_id	3409
title	THE CHANDRA SURVEY OF THE HUBBLE DEEP FIELD NORTH AREA: A PUBLIC RESOURCE FOR THE PRESENT AND FUTURE OF X-RAY ASTRONOMY
observer	Prof. William Brandt
object	HDF-N
dtcycle	0
cycle	P
ra_targ	189.205833
dec_targ	62.216111
ra_nom	189.15367434248
dec_nom	62.244937743799
roll_nom	133.1313459423
revision	2
ontime	83321.676919013
livetime	82233.01786954
ontime0	83309.112998098
ontime1	83327.958859533
ontime2	83318.535918877
ontime3	83321.676919013
l2events	135842



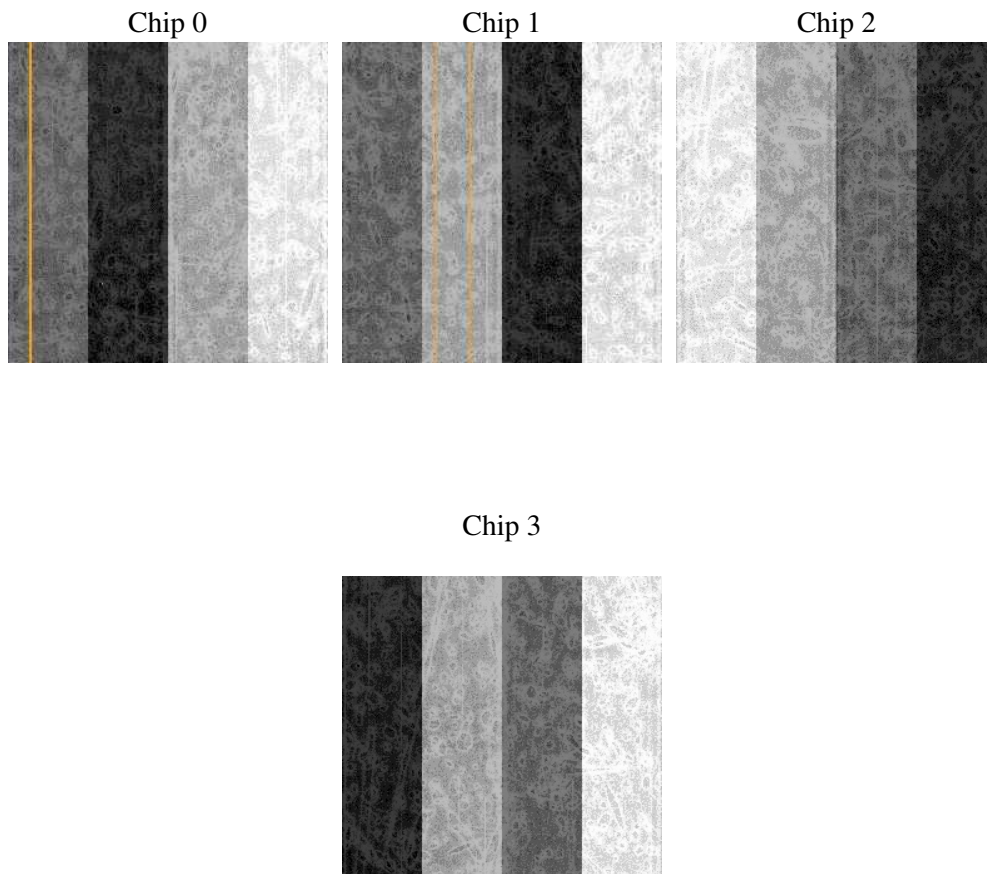
2 OBI

2.1 OBI

2.1.1 Images



2.1.2 Bias



2.1.3 Parameters

obi_num	1
ascdsver	7.6.8.1
caldbver	3.2.3
date	2006-09-01T04:54:57
revision	2

sched_exp_time	83148.277000
ontime	83569.626932114
ontime0	83557.063011199
ontime1	83575.908872634
ontime2	83566.485931978
ontime3	83569.626932114
l1events	1731138

2.1.4 Events

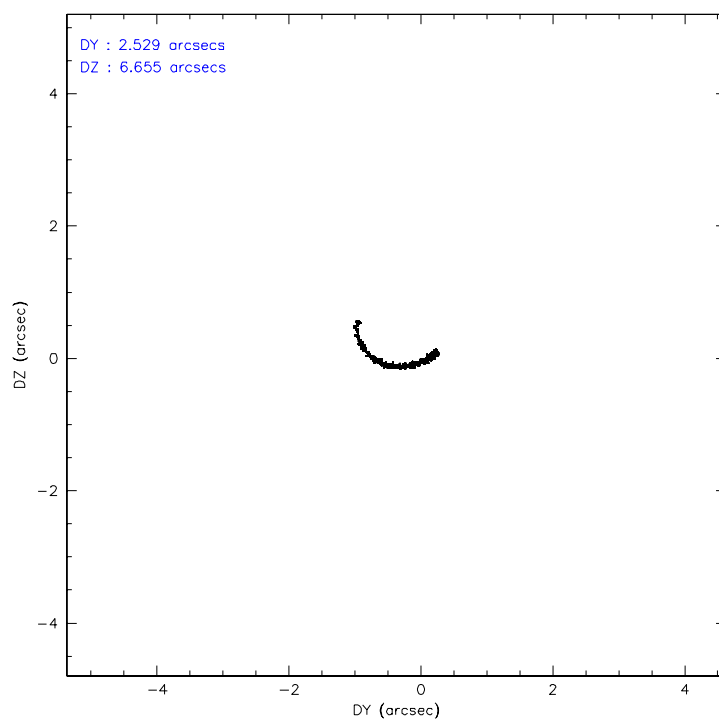
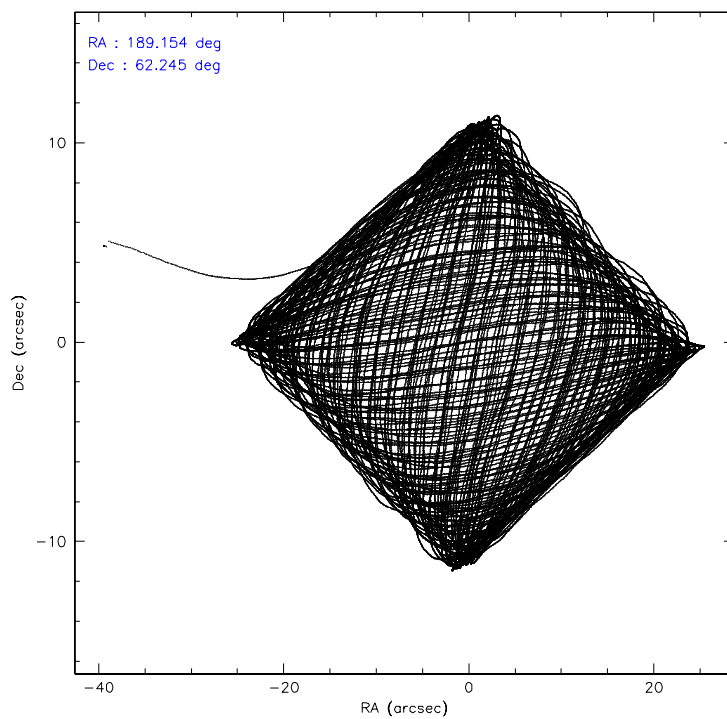
	ccd 0	ccd 1	ccd 2	ccd 3
level 1 events	411951	411447	467701	440039
rejected events	370004	366426	426120	401217
rejected %	89%	89%	91%	91%

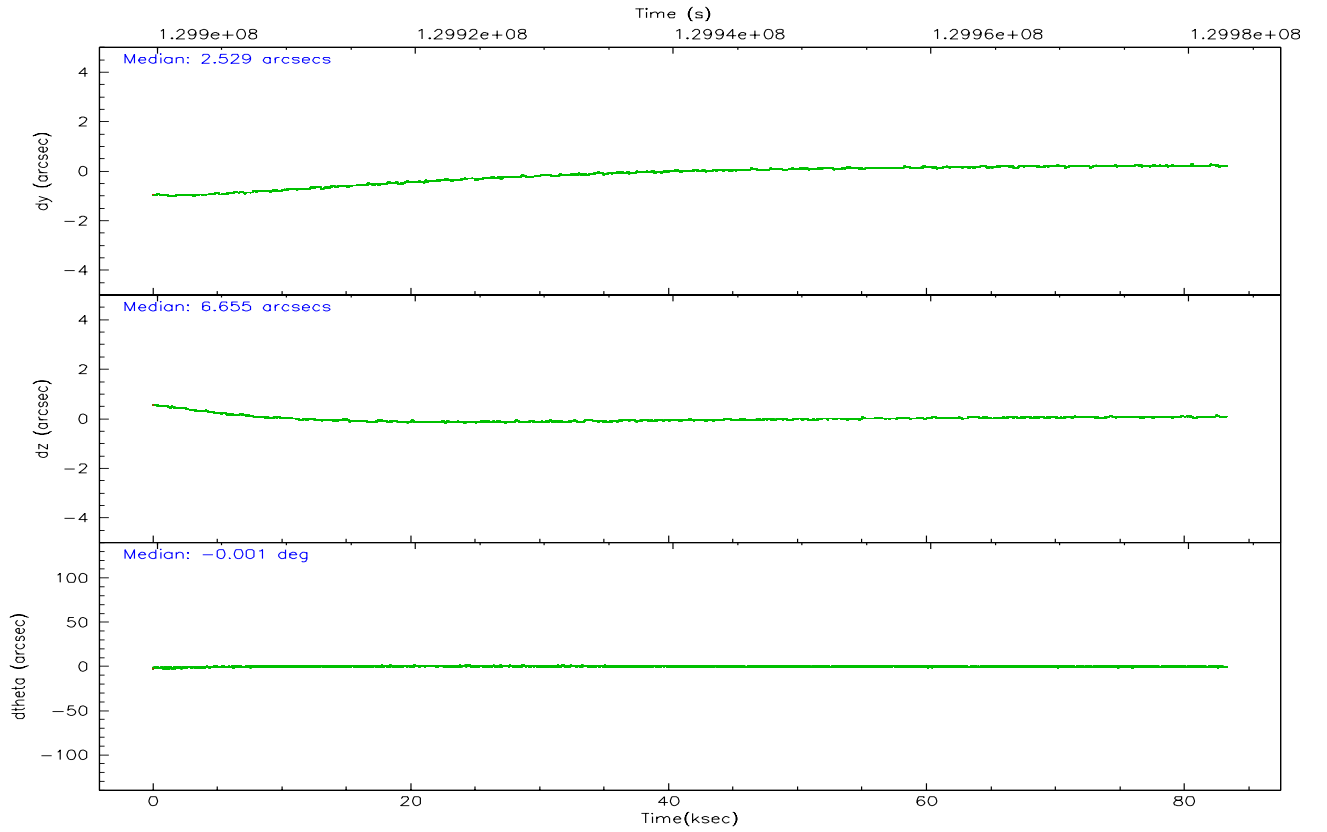
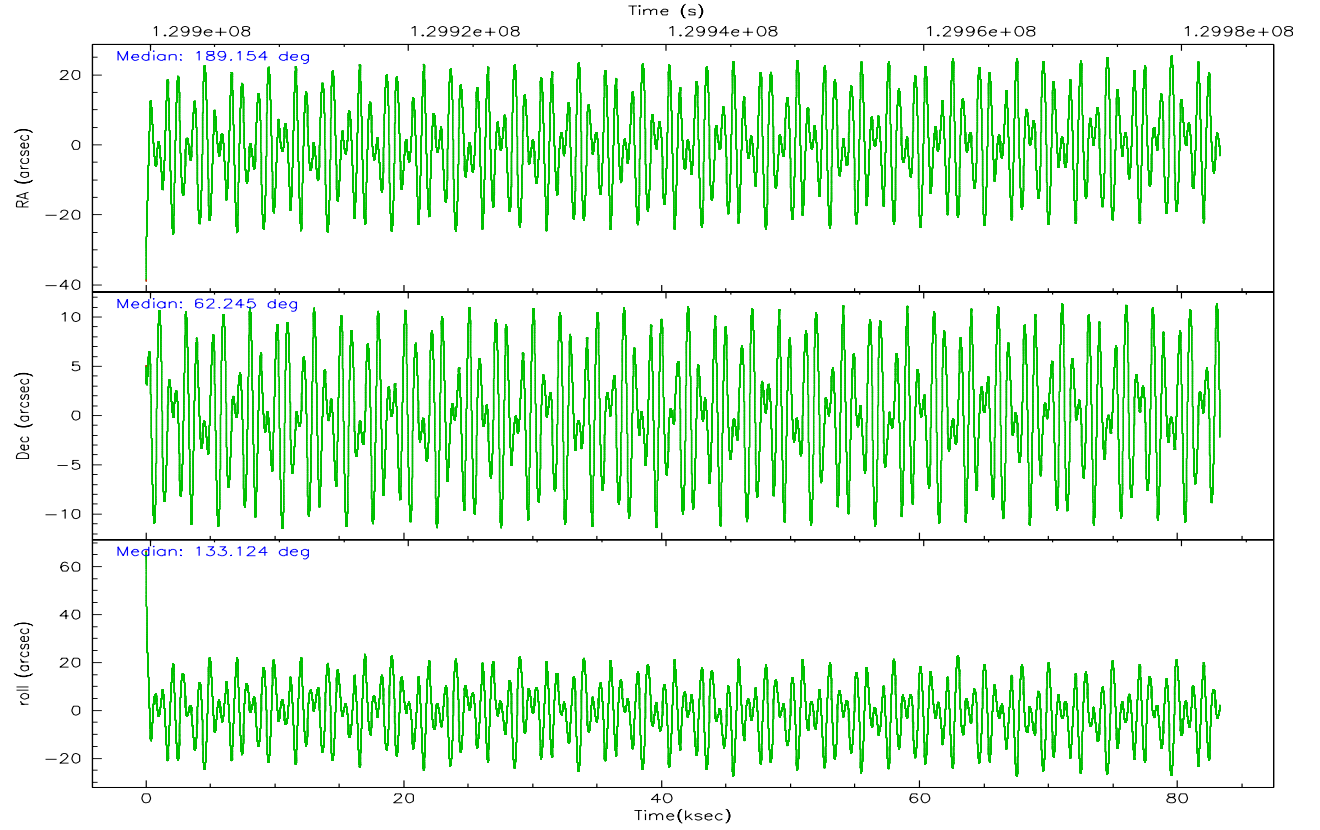
	ccd 0	ccd 1	ccd 2	ccd 3
grade 0 events	15073	16372	15895	14231
	3%	3%	3%	3%
grade 1 events	160	199	203	215
	0%	0%	0%	0%
grade 2 events	9453	9389	9469	8133
	2%	2%	2%	1%
grade 3 events	5111	5466	4553	4602
	1%	1%	0%	1%
grade 4 events	4682	5364	4517	4432
	1%	1%	0%	1%
grade 5 events	12023	13232	10954	13143
	2%	3%	2%	2%
grade 6 events	7745	8542	7284	7548
	1%	2%	1%	1%
grade 7 events	357704	352883	414826	387735
	86%	85%	88%	88%

2.2 Compared Parameters

Parameter	Planned	Actual	Parameter	Planned	Actual
Instrument	ACIS	ACIS	Obspar format version number	6	6
Detector	ACIS-0123	ACIS-0123	Obspar file type	PREDICTED	ACTUAL
Grating	NONE	NONE	Obspar update status	NONE	UPDATED
Data mode	VFAINT	VFAINT	On-chip summing requested	N	N
Observation mode	POINTING	POINTING	Subarray requested	NONE	NONE
Pointing RA	189.210025	189.1536743424783	Alternating exposures requested	N	N
Pointing Dec	62.237031	62.24493774379889	Primary exposure time	0.000000	3.1
Pointing Roll	132.872786	133.1313459422978			
Roll angle	134.000000	134.000000			
Roll tolerance	10.000000	10.000000			
Roll constraint allows 180D rotation	N	N			
SIM focus pos (mm)	-0.782348	-0.7809083437167272			
SIM defocus (mm)	0	0.001439871863259334			
SIM translation stage pos (mm)	-227.712463	-227.7139939163845			
SIM translation stage offset (mm)	-5.88	-5.878459086545149			
Observation start time	129899842.184000	129898790.73455			
Observation start date	2002-02-12T11:16:18	2002-02-12T10:59:50			
Observation end time	129982991.184000	129983305.57546			
Observation end date	2002-02-13T10:22:07	2002-02-13T10:28:25			
Read mode	TIMED	TIMED			

2.3 Aspect



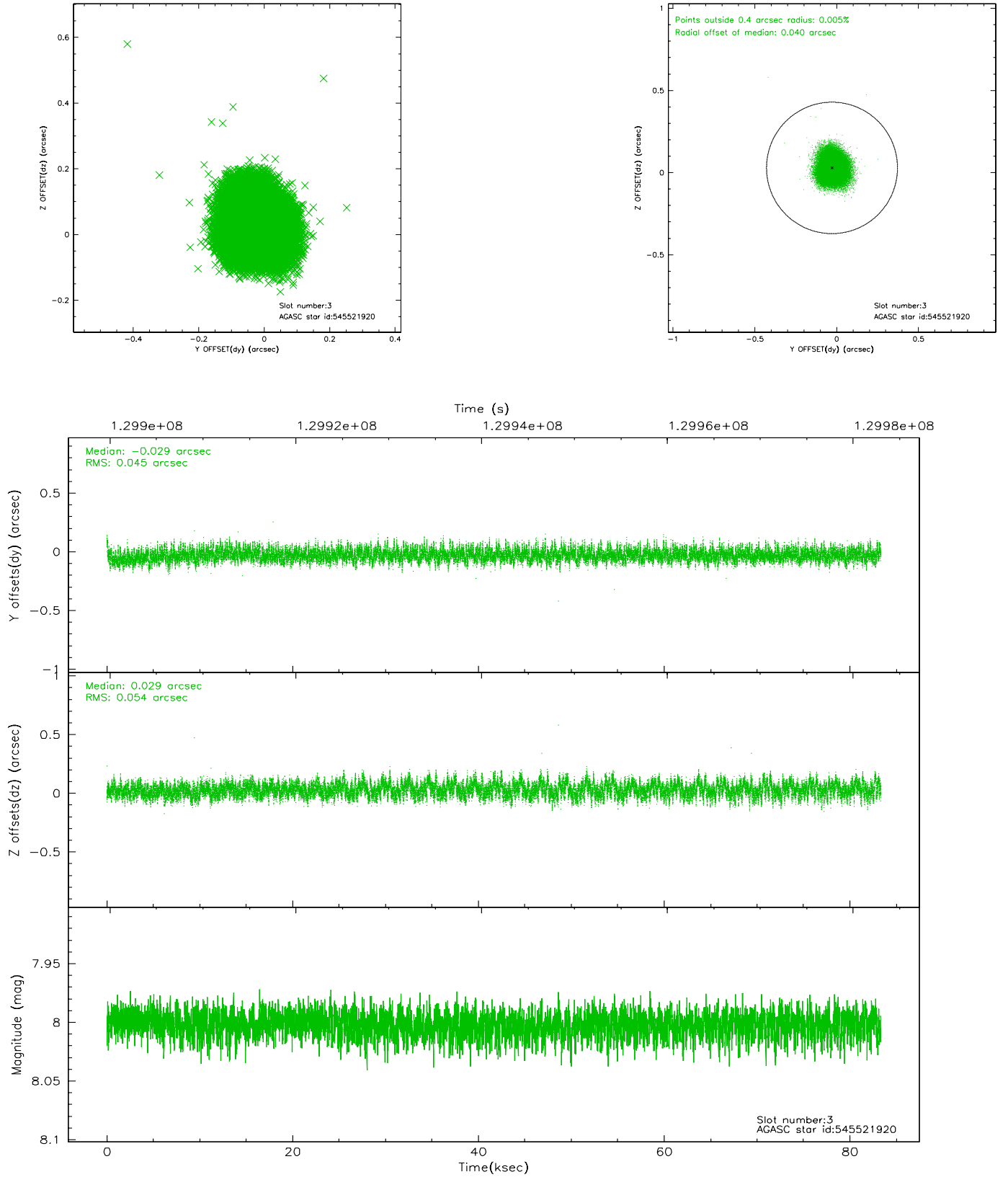


Slot Statistics

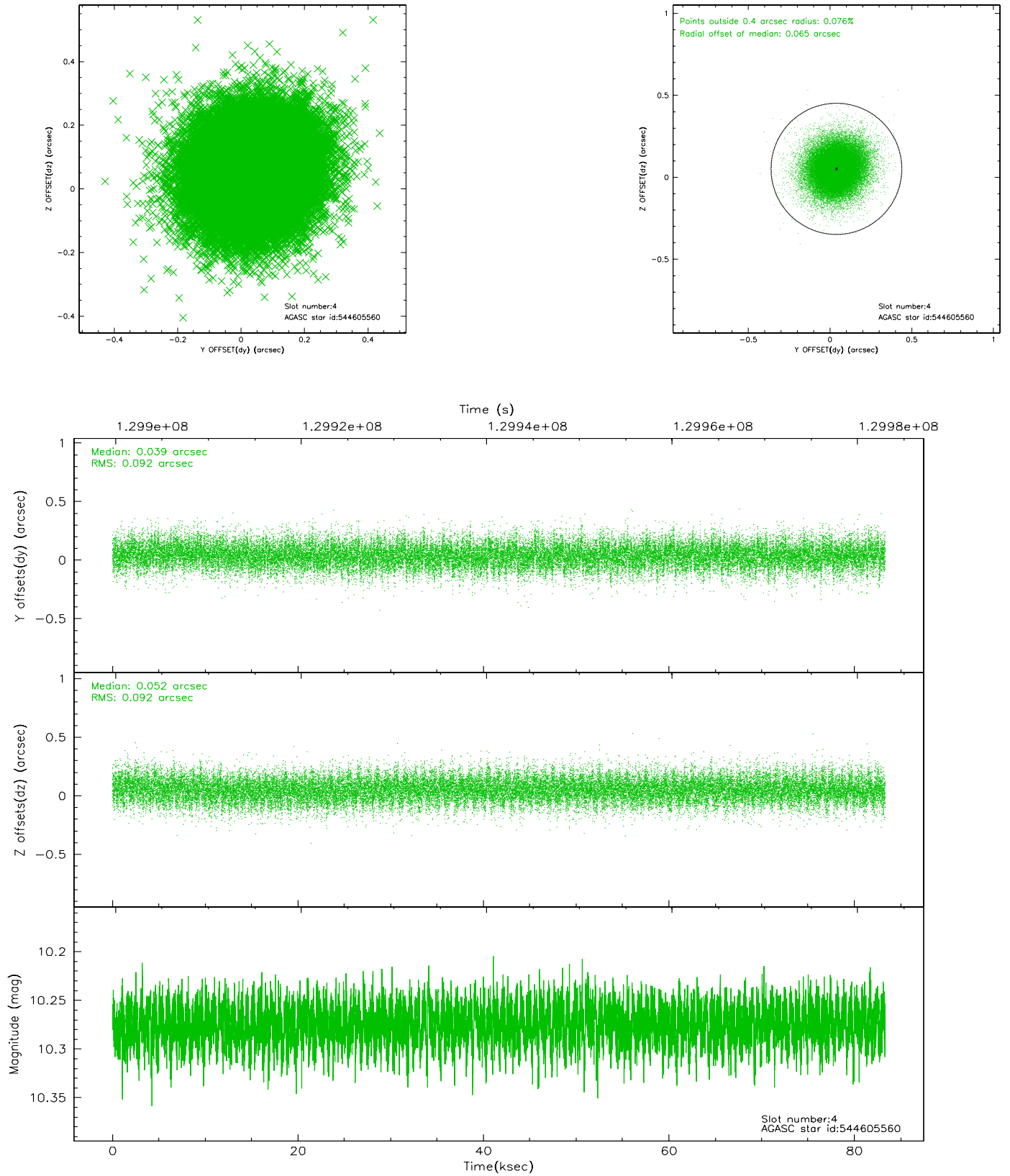
slot	status	id	mag	n_pts	med_dy	med_dz	dr1	dr2	ra	dec	mean_y	mean_z
0	FID	ACIS-I-1	7.25	20324	0.025	0.030	0.007	0.013	0.000000	0.000000	937.34	-950.68
1	FID	ACIS-I-5	7.24	20326	-0.089	0.073	0.009	0.022	0.000000	0.000000	-1810.90	946.91
2	FID	ACIS-I-6	7.25	20325	-0.028	-0.032	0.011	0.024	0.000000	0.000000	402.94	1591.20
3	GUIDE	545521920	8.00	40641	-0.029	0.029	0.076	0.121	190.203465	62.042567	-1643.84	-761.14
4	GUIDE	544605560	10.27	40608	0.039	0.052	0.137	0.229	187.386670	62.313812	2309.09	2018.17
5	GUIDE	545523632	10.05	40581	0.051	-0.201	0.136	0.218	188.952319	61.550910	-1508.51	2003.84
6	GUIDE	545915360	9.30	40626	-0.103	0.117	0.100	0.158	190.127769	62.766153	375.83	-2410.90
7	GUIDE	545916224	9.60	40310	0.042	0.010	0.111	0.225	188.817359	62.651242	1536.67	-539.57

2.4 Star Slots

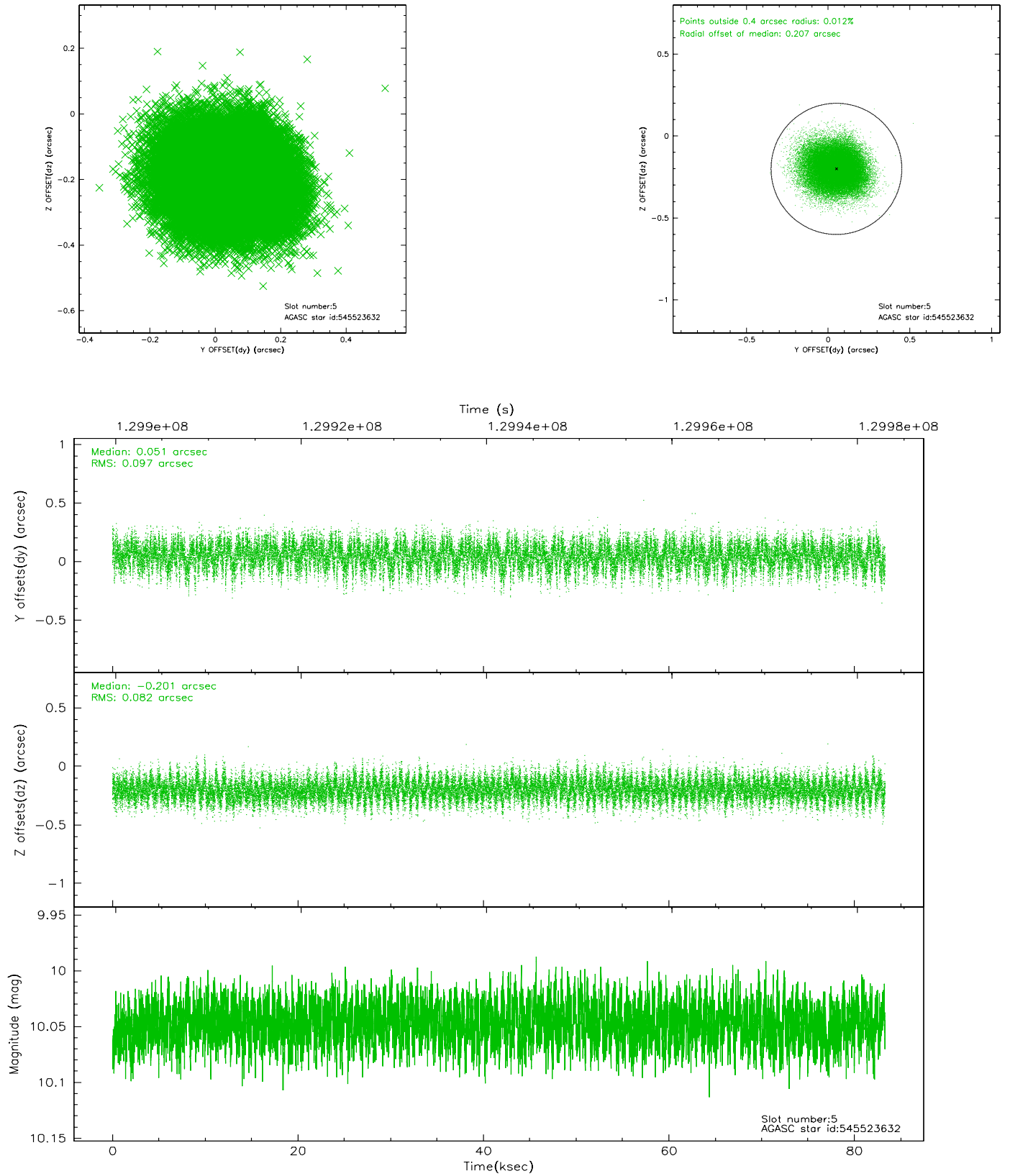
2.4.1 Slot 3



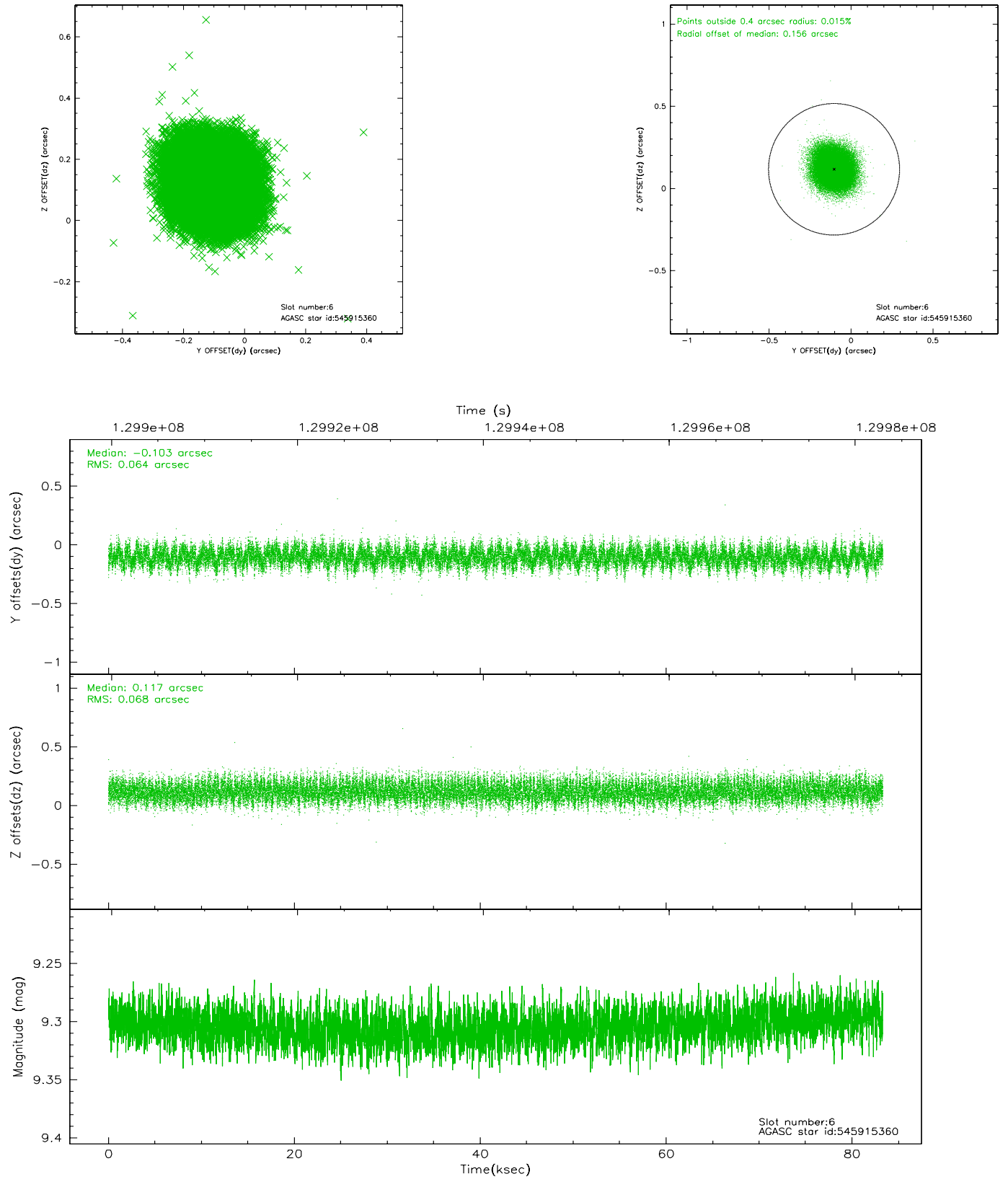
2.4.2 Slot 4



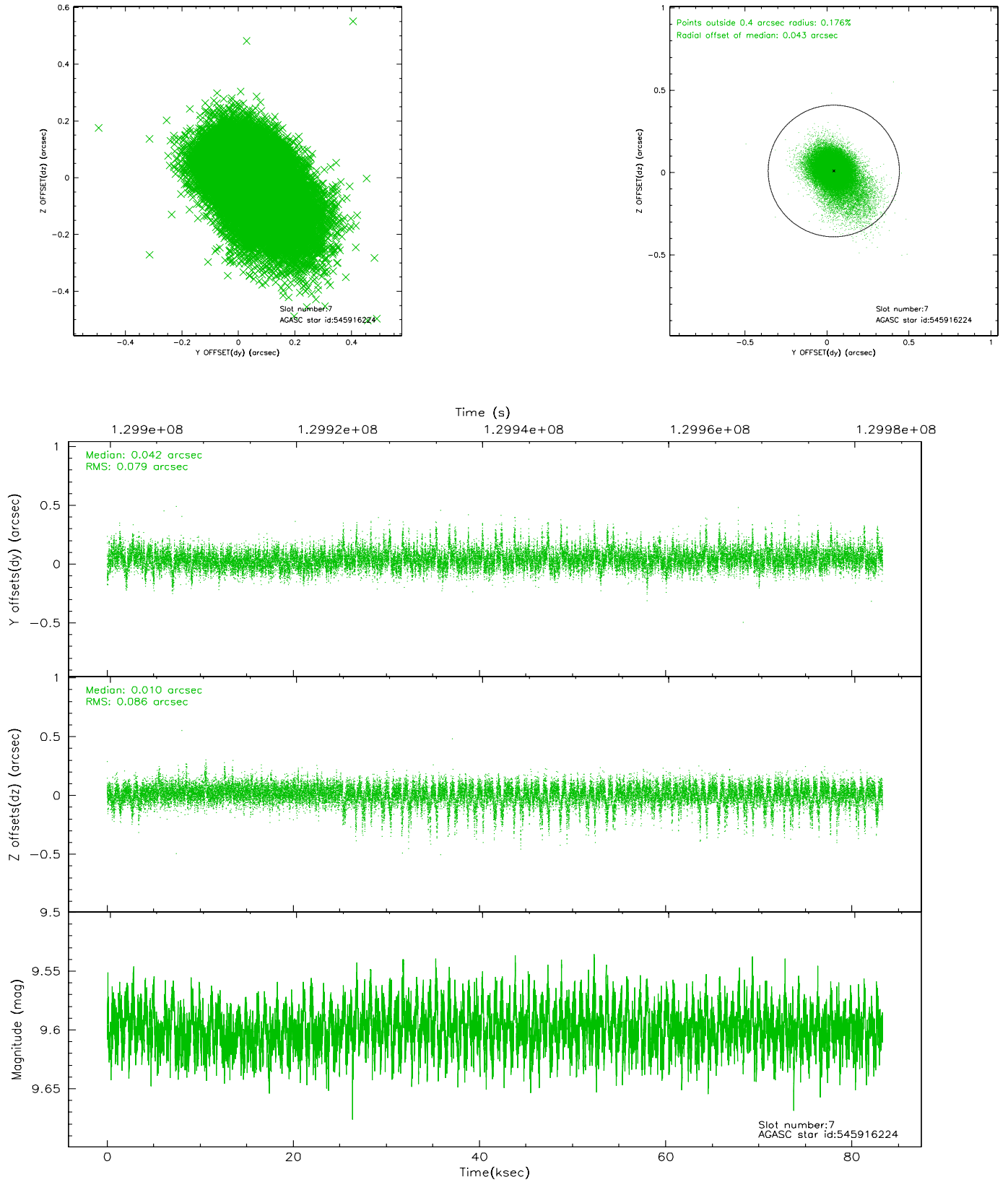
2.4.3 Slot 5



2.4.4 Slot 6

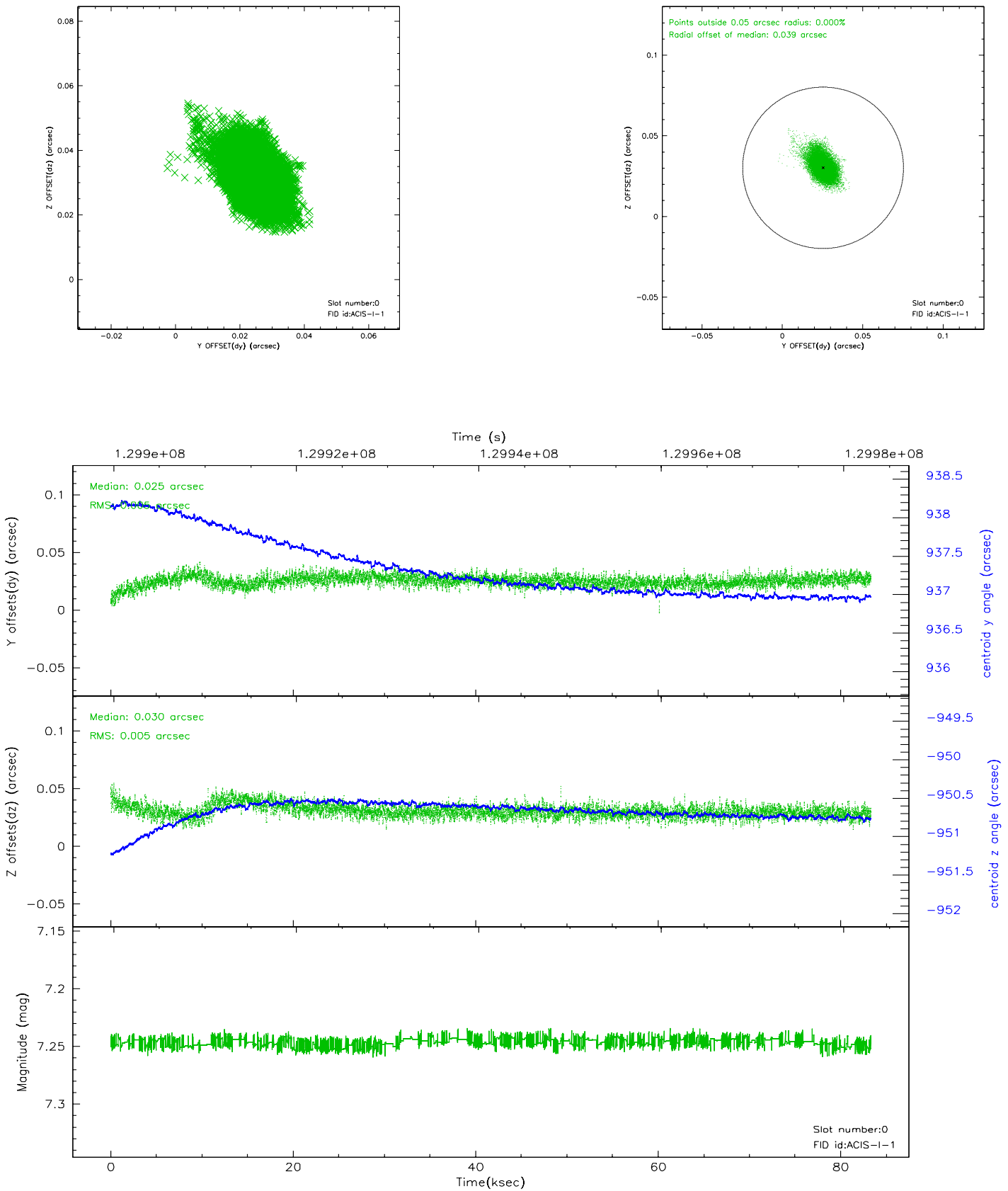


2.4.5 Slot 7

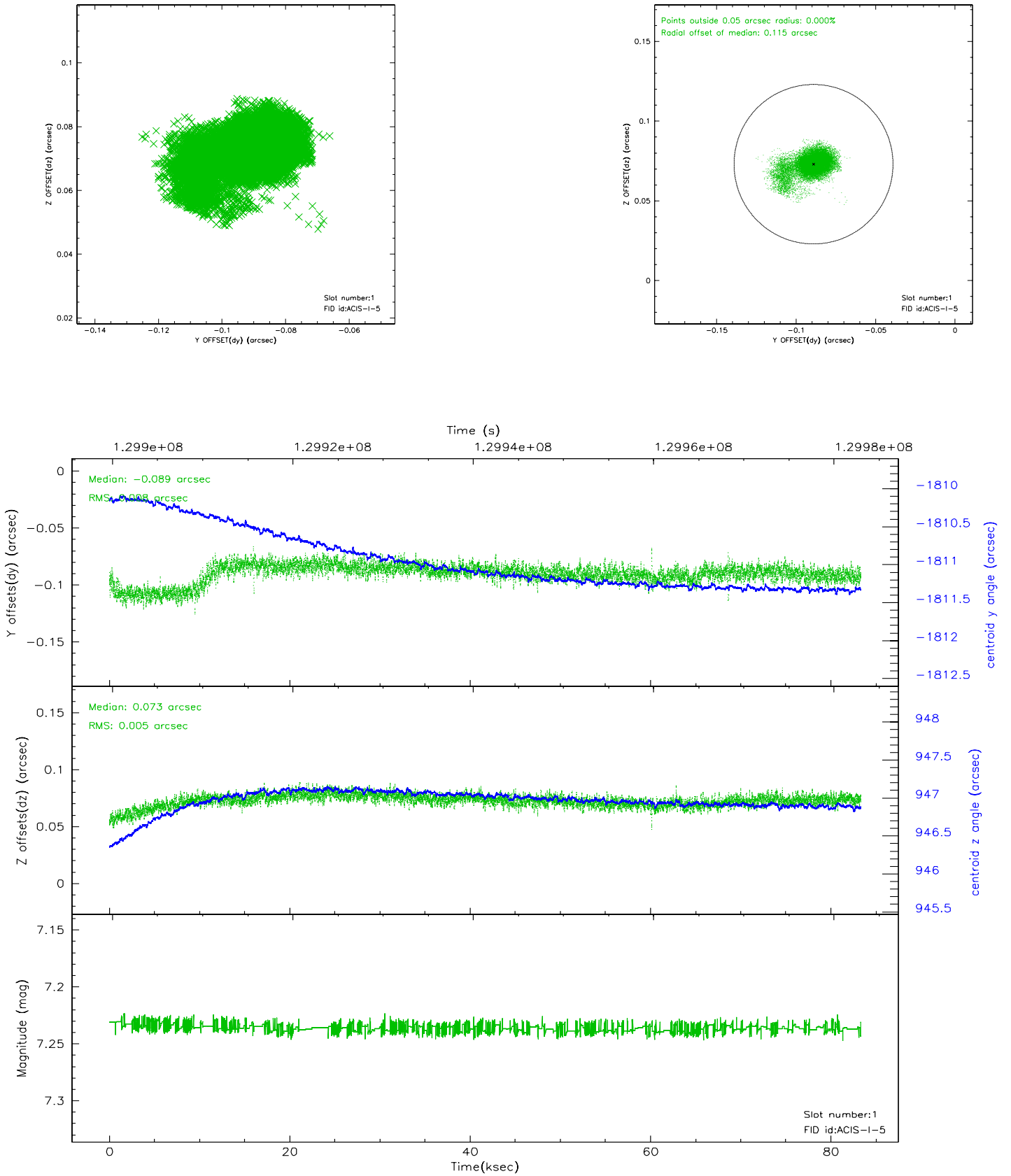


2.5 FID Slots

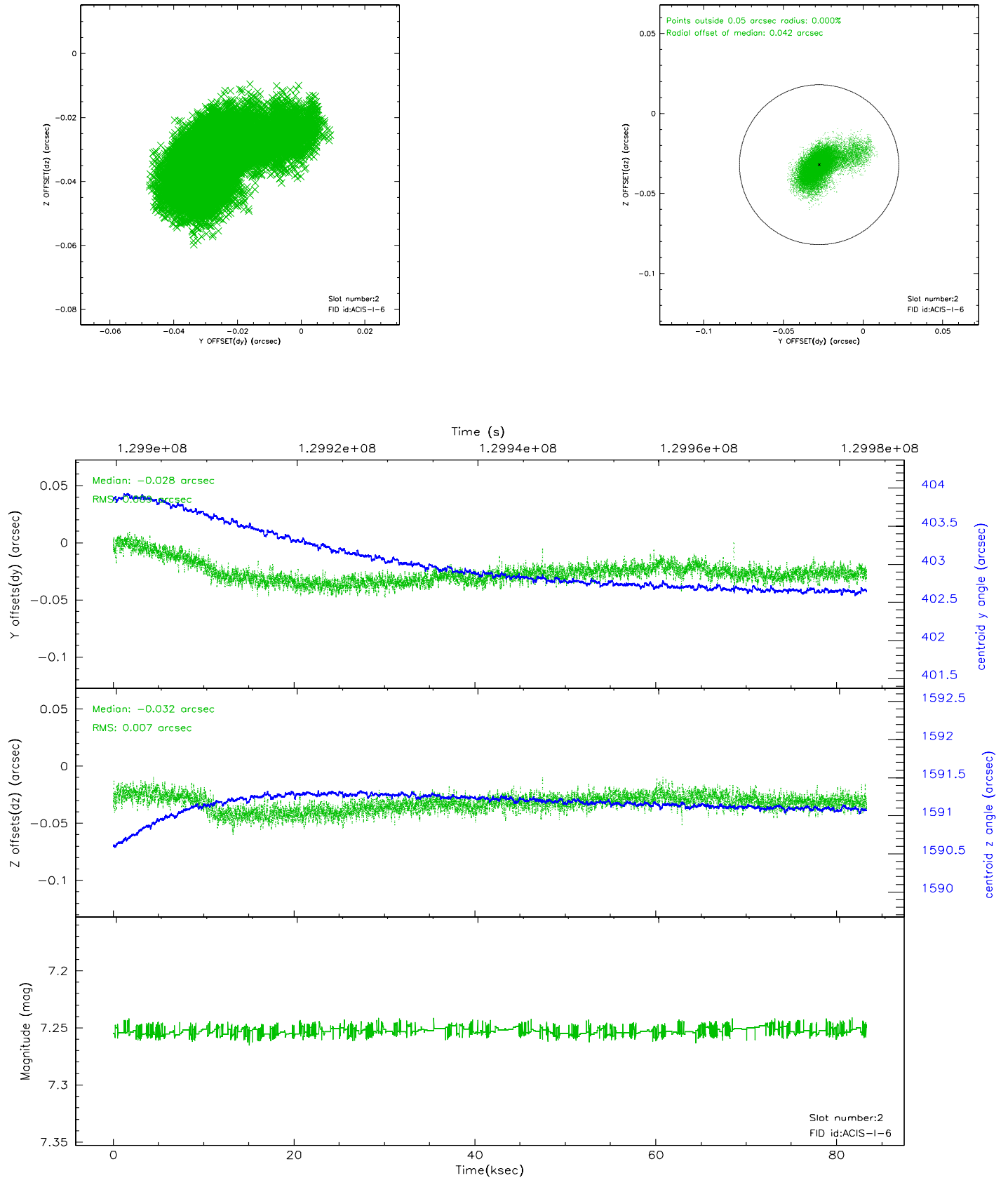
2.5.1 Slot 0



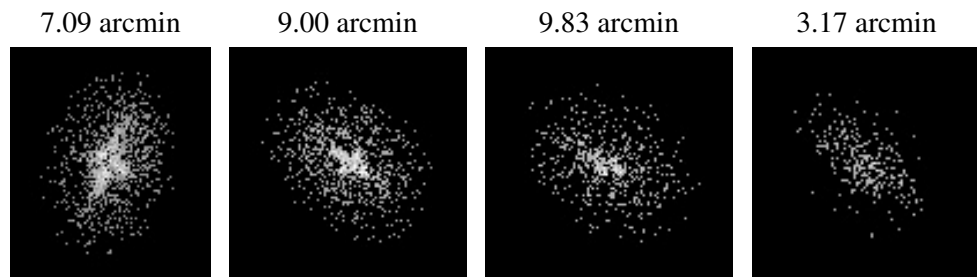
2.5.2 Slot 1



2.5.3 Slot 2



3 Point Sources



A Summary

A.1 Status

V&V Scientist	Beth Sundheim
V&V Date (YYYY-MM-DD)	2006.09.01
V&V Edition	1
V&V Disposition and Status	OK
V&V Charge Time	83.321

A.2 Comments

Roll constraint satisfied.