

V&V Reference Report

L2 ASCDS Version : 7.6.9

Observation 3329 - L2 Version 001
Chandra X-Ray Center

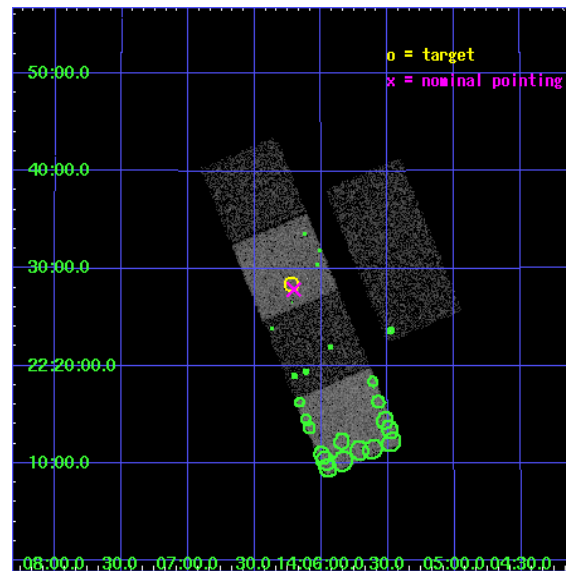
L2 Processing Date : Sep 22 2006

Contents

1	Front	2
2	OBI	3
2.1	OBI	3
2.1.1	Images	3
2.1.2	Bias	3
2.1.3	Parameters	4
2.1.4	Events	4
2.2	Compared Parameters	5
2.3	Aspect	6
2.4	Star Slots	9
2.4.1	Slot 3	9
2.4.2	Slot 4	10
2.4.3	Slot 5	11
2.4.4	Slot 6	12
2.4.5	Slot 7	13
2.5	FID Slots	14
2.5.1	Slot 0	14
2.5.2	Slot 1	15
2.5.3	Slot 2	16
3	Point Sources	17
A	Summary	18
A.1	Status	18
A.2	Comments	18

1 Front

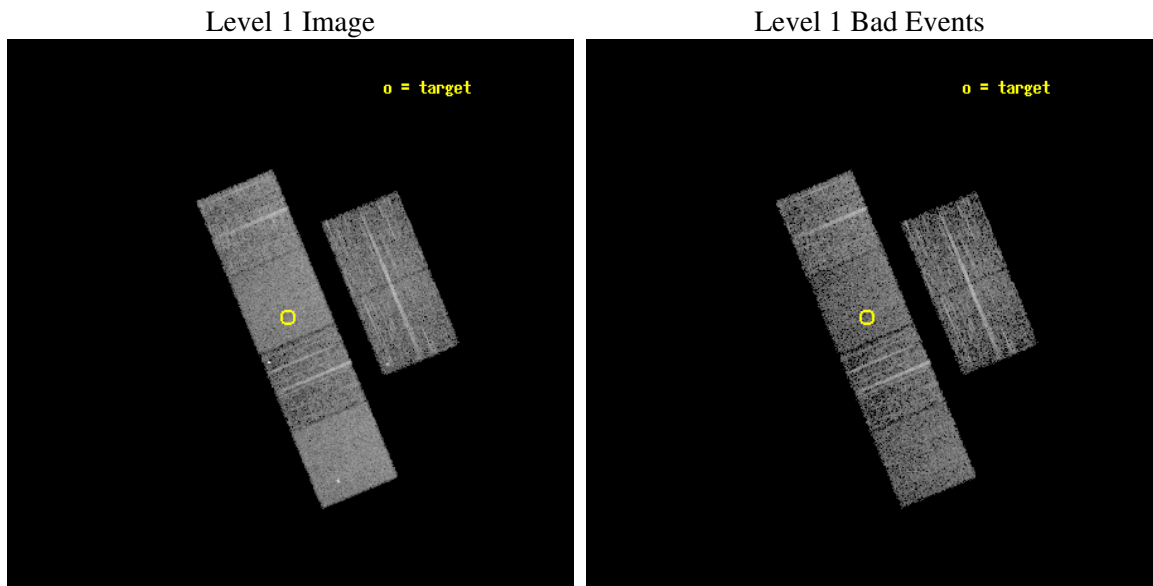
seq_num	900168
obs_id	3329
title	THE SHEEP SURVEY: WHAT KIND OF OBJECTS MAKE THE X-RAY BACKGROUND?
observer	Professor Kirpal Nandra
object	AX J1406.2+2228
dtcycle	0
cycle	P
ra_targ	211.556667
dec_targ	22.472778
ra_nom	211.55104805452
dec_nom	22.464539306681
roll_nom	247.45102541215
revision	2
ontime	4758.3999822736
livetime	4698.1462565335
ontime2	4758.3999822736
ontime3	4758.3999822736
ontime5	4758.3999822736
ontime6	4758.3999822736
ontime7	4758.3999822736
ontime8	4755.1590219736
l2events	48611



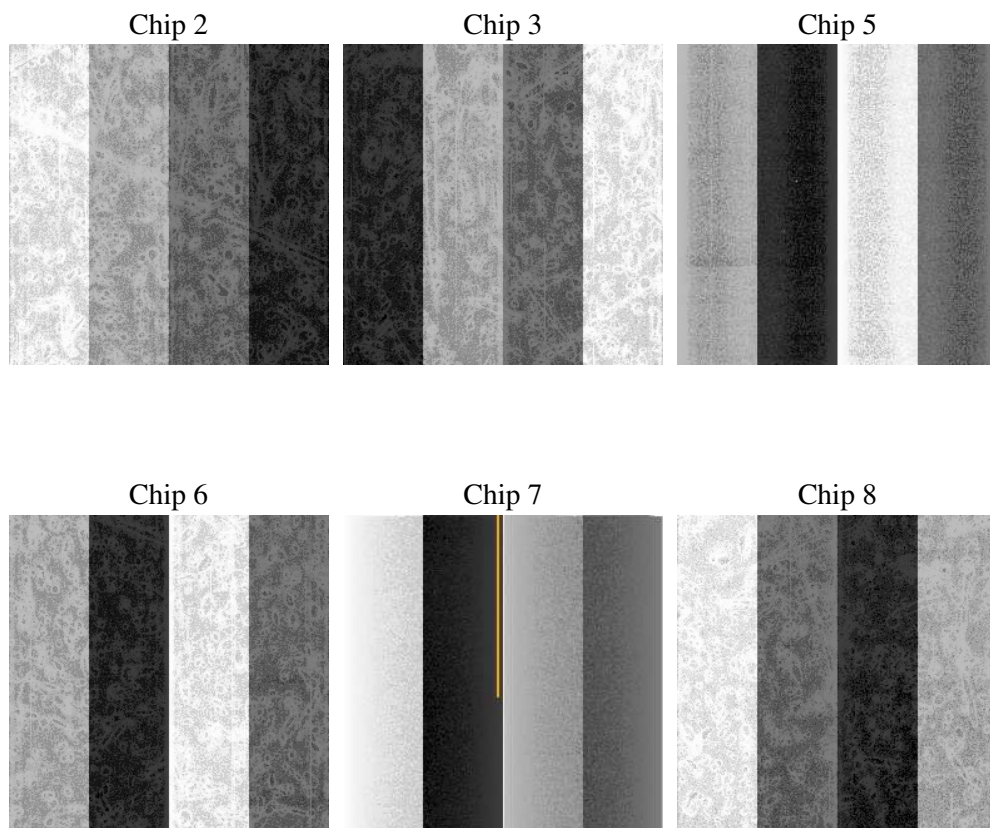
2 OBI

2.1 OBI

2.1.1 Images



2.1.2 Bias



2.1.3 Parameters

obi_num	0
ascdsver	7.6.9
caldsver	3.2.3
date	2006-09-22T23:12:07
revision	2

sched_exp_time	5000.000000
ontime	4764.2689754665
ontime2	4764.2689754665
ontime3	4764.2689754665
ontime5	4764.2689754665
ontime6	4764.2689754665
ontime7	4764.2689754665
ontime8	4761.0279155374
l1events	225479

2.1.4 Events

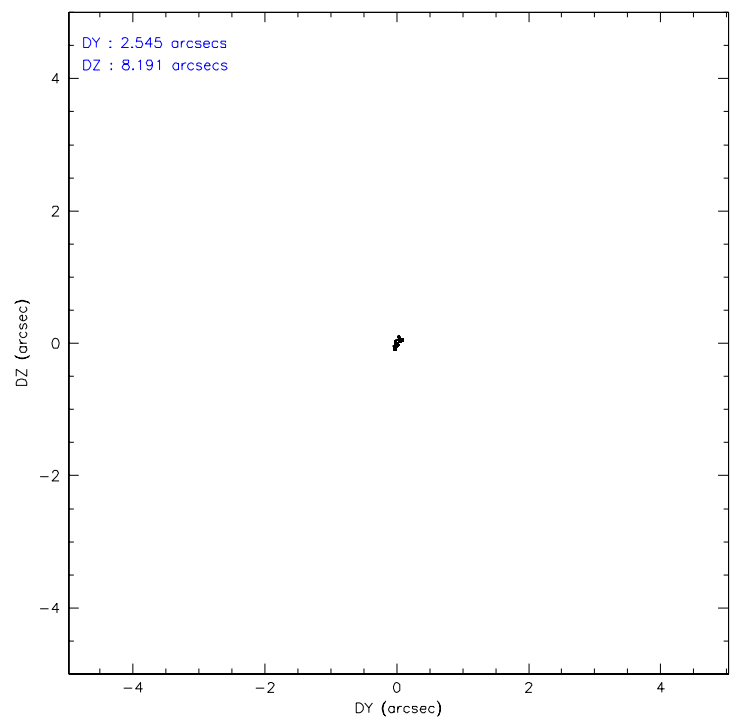
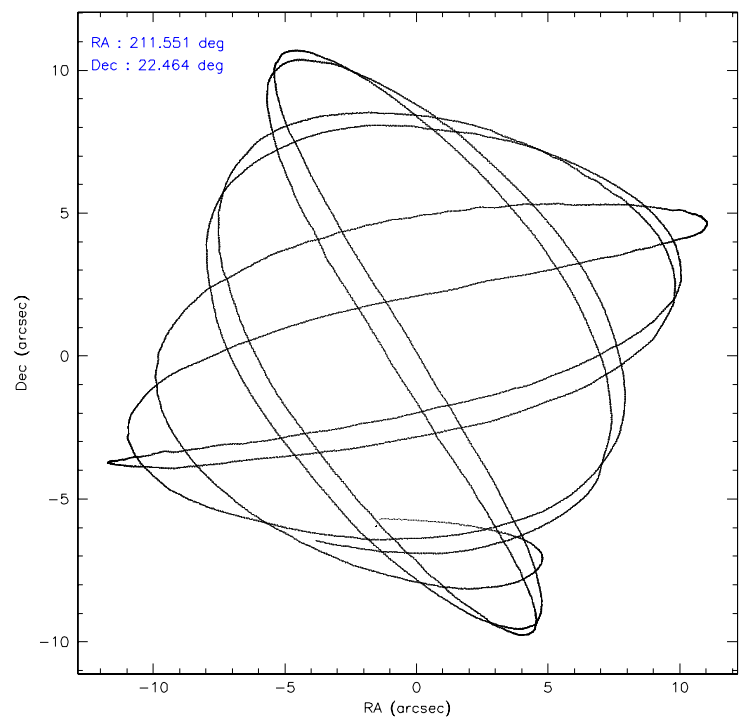
	ccd 2	ccd 3	ccd 5	ccd 6	ccd 7	ccd 8
level 1 events	32022	31883	44835	32894	42074	41771
rejected events	28216	28144	25437	28449	25747	33975
rejected %	88%	88%	56%	86%	61%	81%

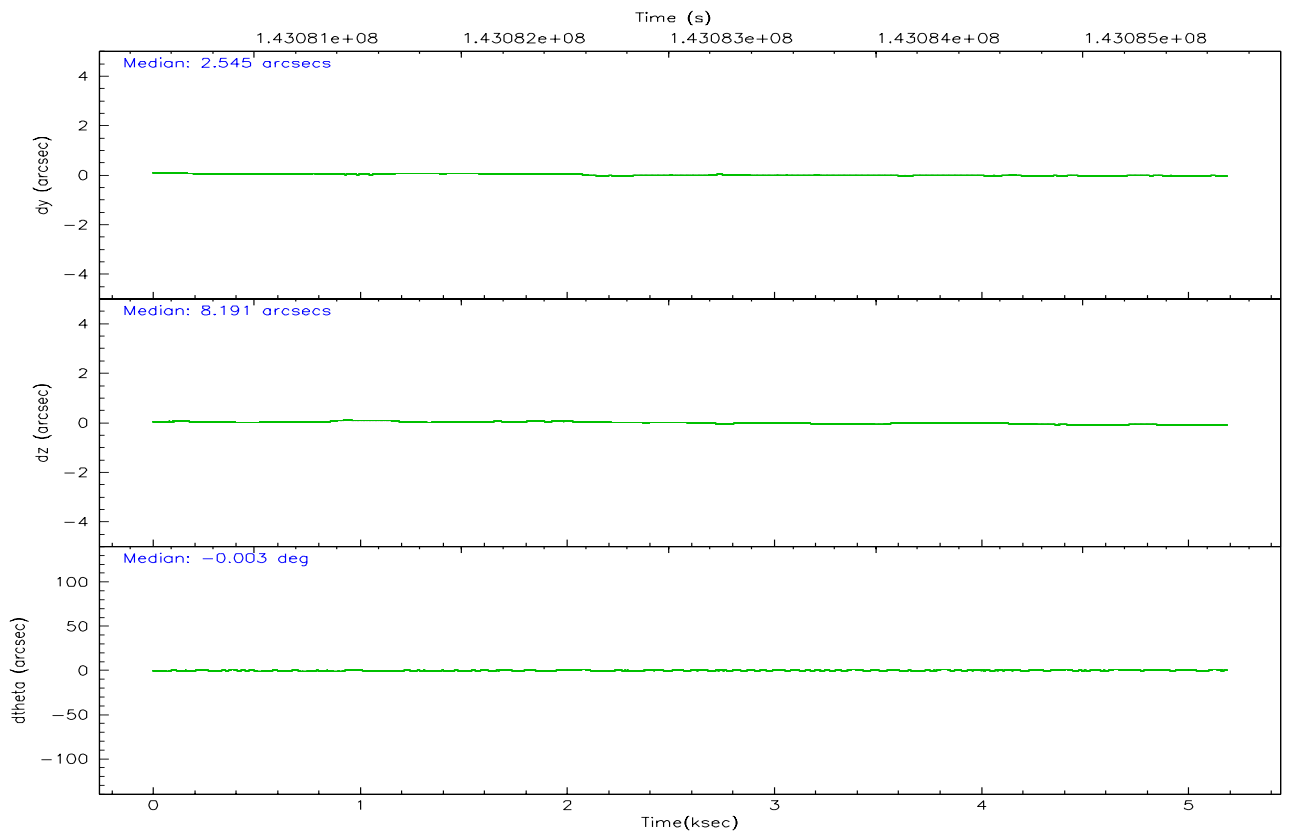
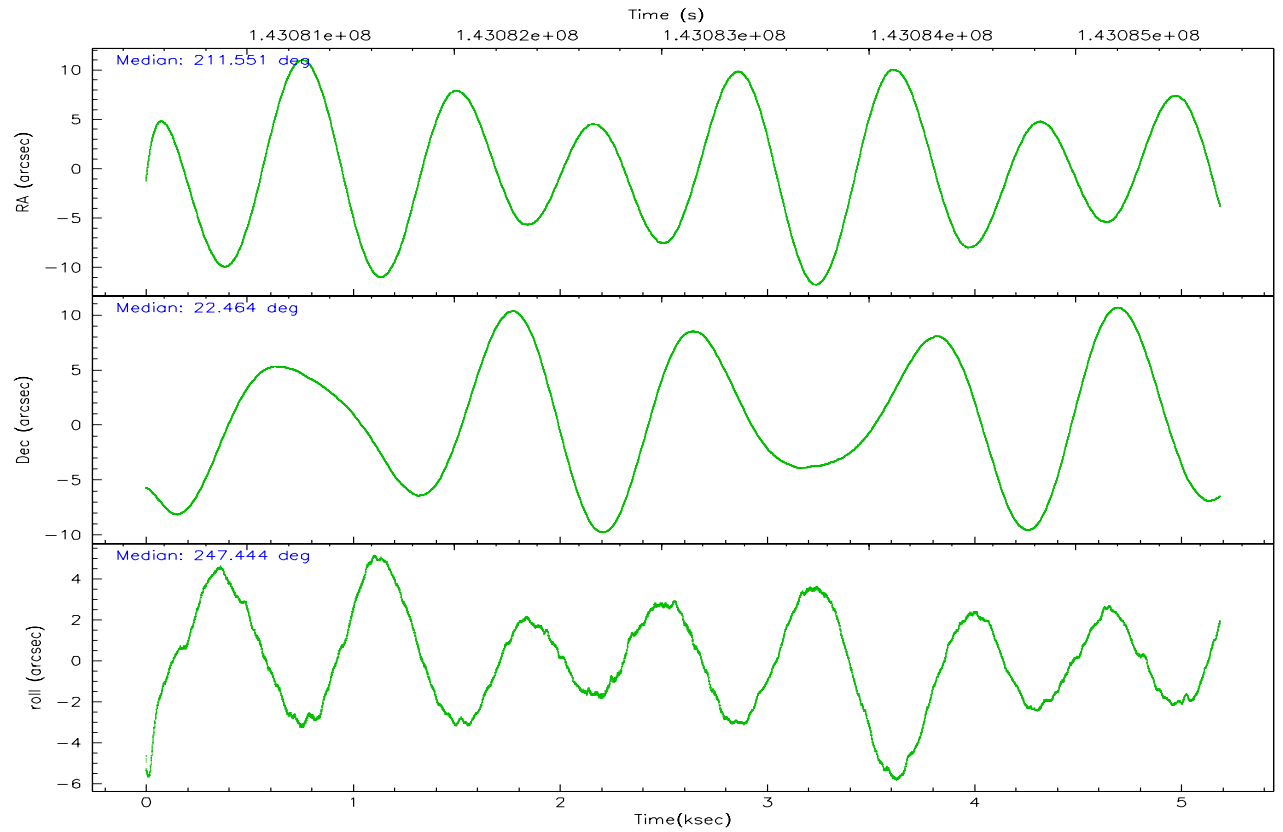
	ccd 2	ccd 3	ccd 5	ccd 6	ccd 7	ccd 8
grade 0 events	1755	1574	1107	2123	1111	2501
	5%	4%	2%	6%	2%	5%
grade 1 events	16	10	39	21	29	32
	0%	0%	0%	0%	0%	0%
grade 2 events	793	774	5960	844	4011	1621
	2%	2%	13%	2%	9%	3%
grade 3 events	292	376	635	368	898	865
	0%	1%	1%	1%	2%	2%
grade 4 events	347	363	443	366	816	777
	1%	1%	0%	1%	1%	1%
grade 5 events	1219	1298	2172	1461	2863	1634
	3%	4%	4%	4%	6%	3%
grade 6 events	621	654	11268	749	9504	2032
	1%	2%	25%	2%	22%	4%
grade 7 events	26979	26834	23211	26962	22842	32309
	84%	84%	51%	81%	54%	77%

2.2 Compared Parameters

Parameter	Planned	Actual	Parameter	Planned	Actual
Instrument	ACIS	ACIS	Obspar format version number	6	6
Detector	ACIS-235678	ACIS-235678	Obspar file type	PREDICTED	ACTUAL
Grating	NONE	NONE	Obspar update status	NONE	UPDATED
Data mode	FAINT	FAINT	Number of optional ACIS chips dropped	0	0
Observation mode	POINTING	POINTING	On-chip summing requested	N	N
Pointing RA	211.546801	211.5510480545229	Subarray requested	NONE	NONE
Pointing Dec	22.491588	22.46453930668052	Alternating exposures requested	N	N
Pointing Roll	247.296036	247.4510254121494	Primary exposure time	0.000000	3.2
SIM focus pos (mm)	-0.684267	-0.6828225247311905			
SIM defocus (mm)	0	0.001444936568705701			
SIM translation stage pos (mm)	-190.132523	-190.1400660498719			
SIM translation stage offset (mm)	0	0.00754346686406393			
Observation start time	143080699.184000	143079905.87117			
Observation start date	2002-07-15T00:37:15	2002-07-15T00:25:05			
Observation end time	143085699.184000	143085932.87142			
Observation end date	2002-07-15T02:00:35	2002-07-15T02:05:32			
Read mode	TIMED	TIMED			

2.3 Aspect



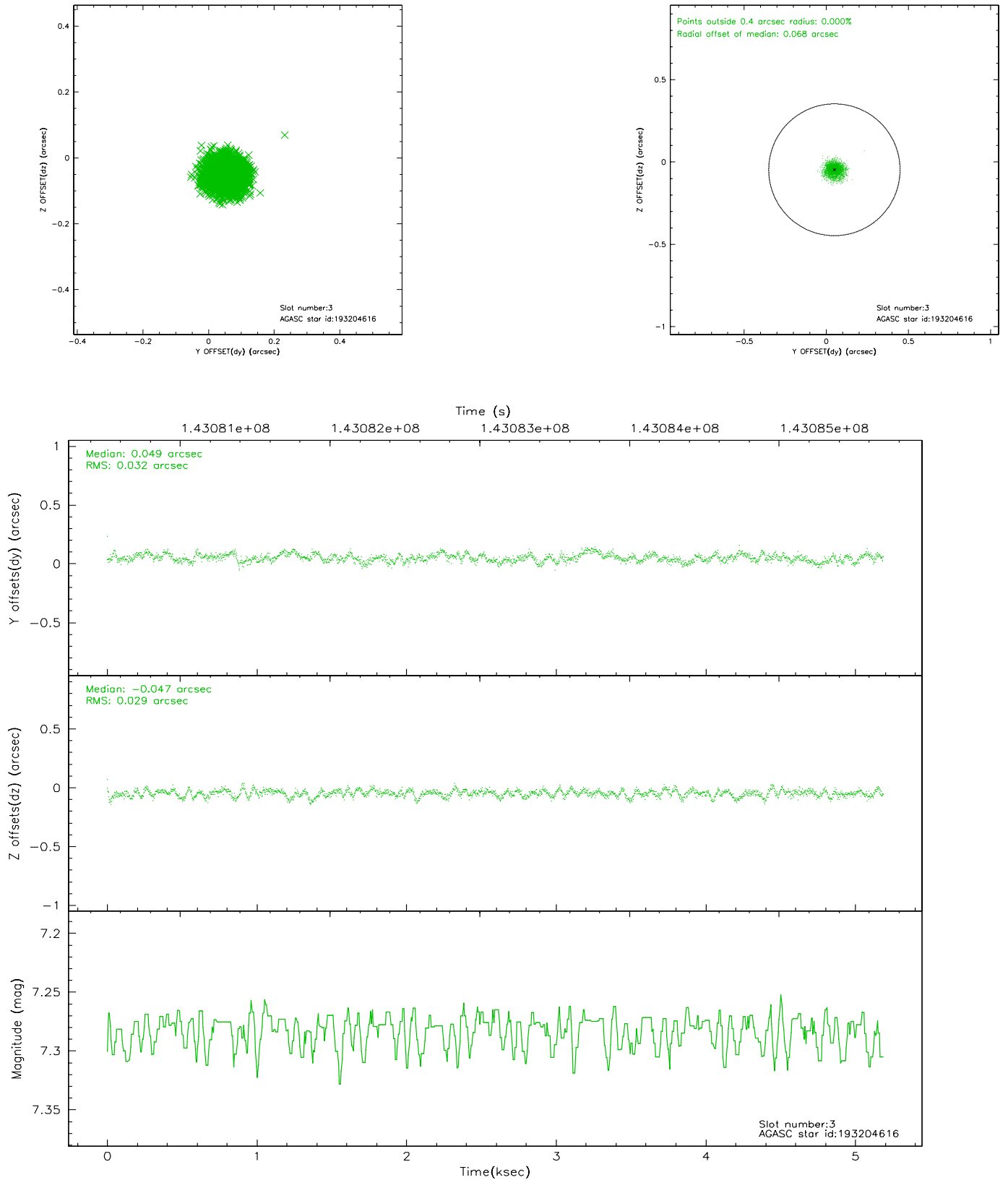


Slot Statistics

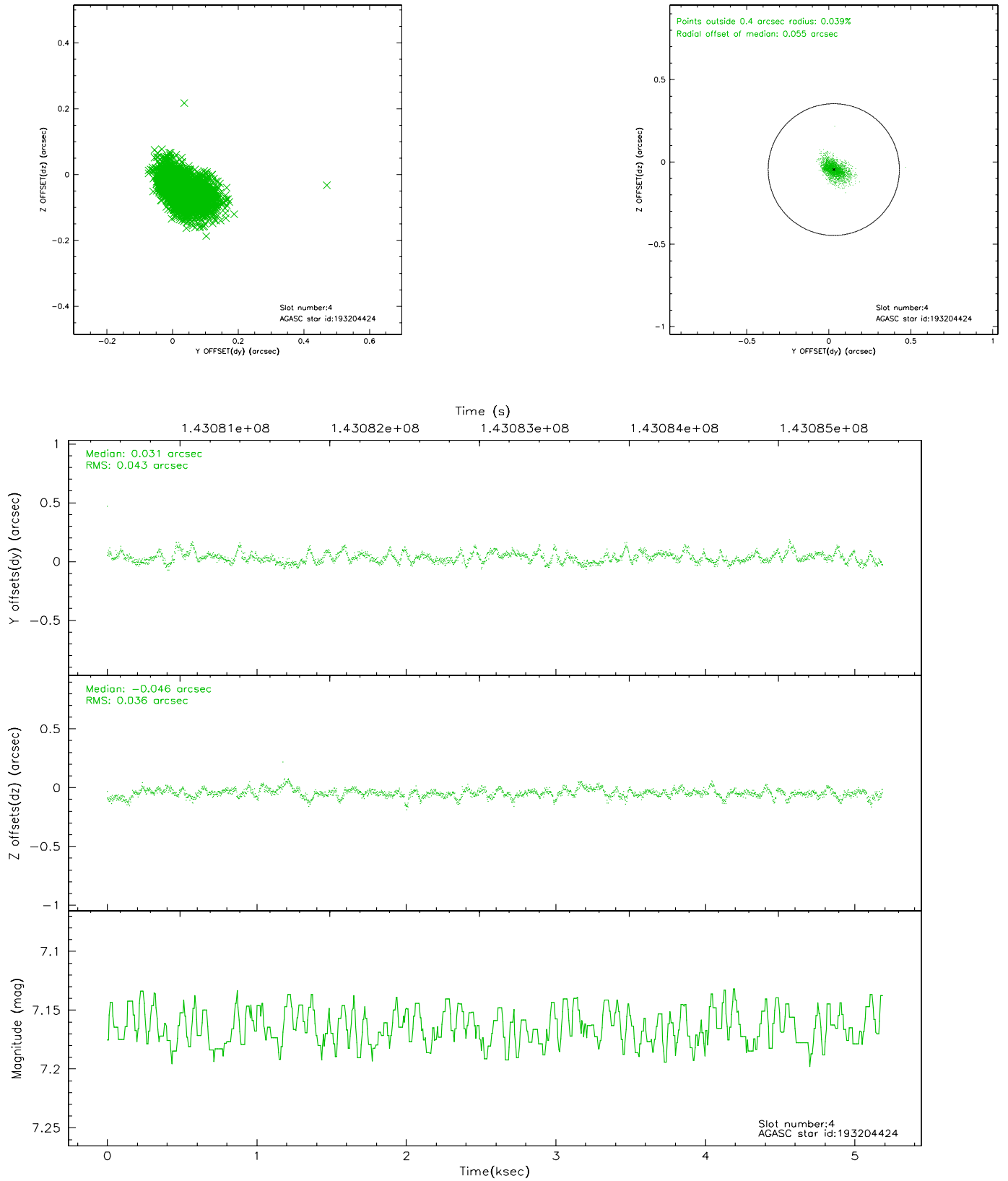
slot	status	id	mag	n_pts	med_dy	med_dz	dr1	dr2	ra	dec	mean_y	mean_z
0	FID	ACIS-S-2	7.11	1266	0.005	0.028	0.006	0.010	0.000000	0.000000	-755.20	-1729.35
1	FID	ACIS-S-4	7.20	1266	-0.080	-0.010	0.005	0.008	0.000000	0.000000	2157.48	177.86
2	FID	ACIS-S-5	7.24	1266	0.044	-0.010	0.006	0.010	0.000000	0.000000	-1806.48	172.90
3	GUIDE	193204616	7.28	2532	0.049	-0.047	0.046	0.074	211.556472	22.167699	1062.50	480.64
4	GUIDE	193204424	7.17	2532	0.031	-0.046	0.057	0.102	210.841613	22.495754	886.47	-2170.66
5	GUIDE	262935040	7.49	2531	-0.034	-0.077	0.053	0.085	211.422194	22.731013	-635.70	-714.72
6	GUIDE	262939080	8.32	2531	-0.105	0.064	0.055	0.090	212.074376	22.563038	-918.35	1518.01
7	GUIDE	193204624	9.59	2531	0.054	0.107	0.086	0.144	211.841887	22.462558	-284.55	946.91

2.4 Star Slots

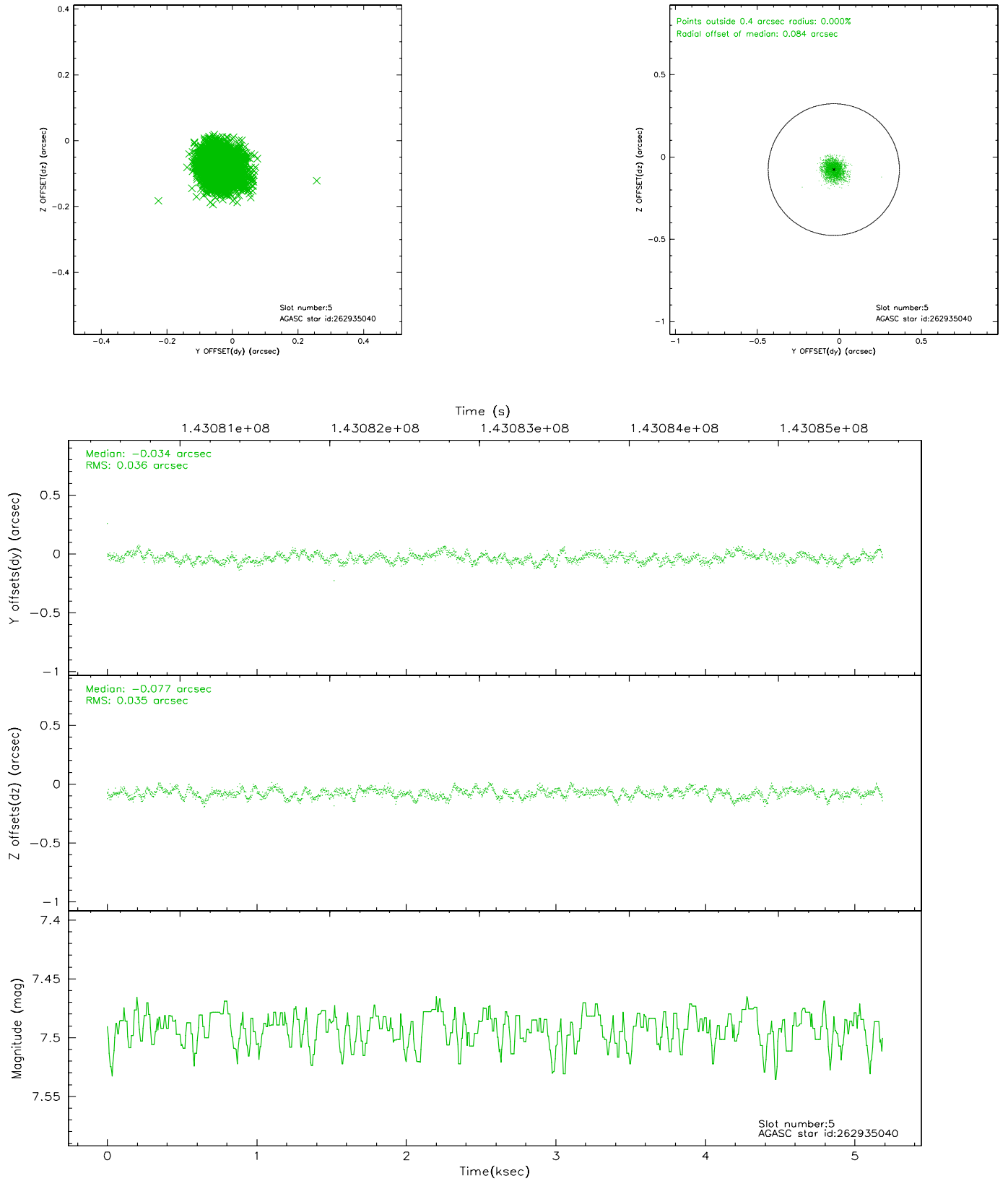
2.4.1 Slot 3



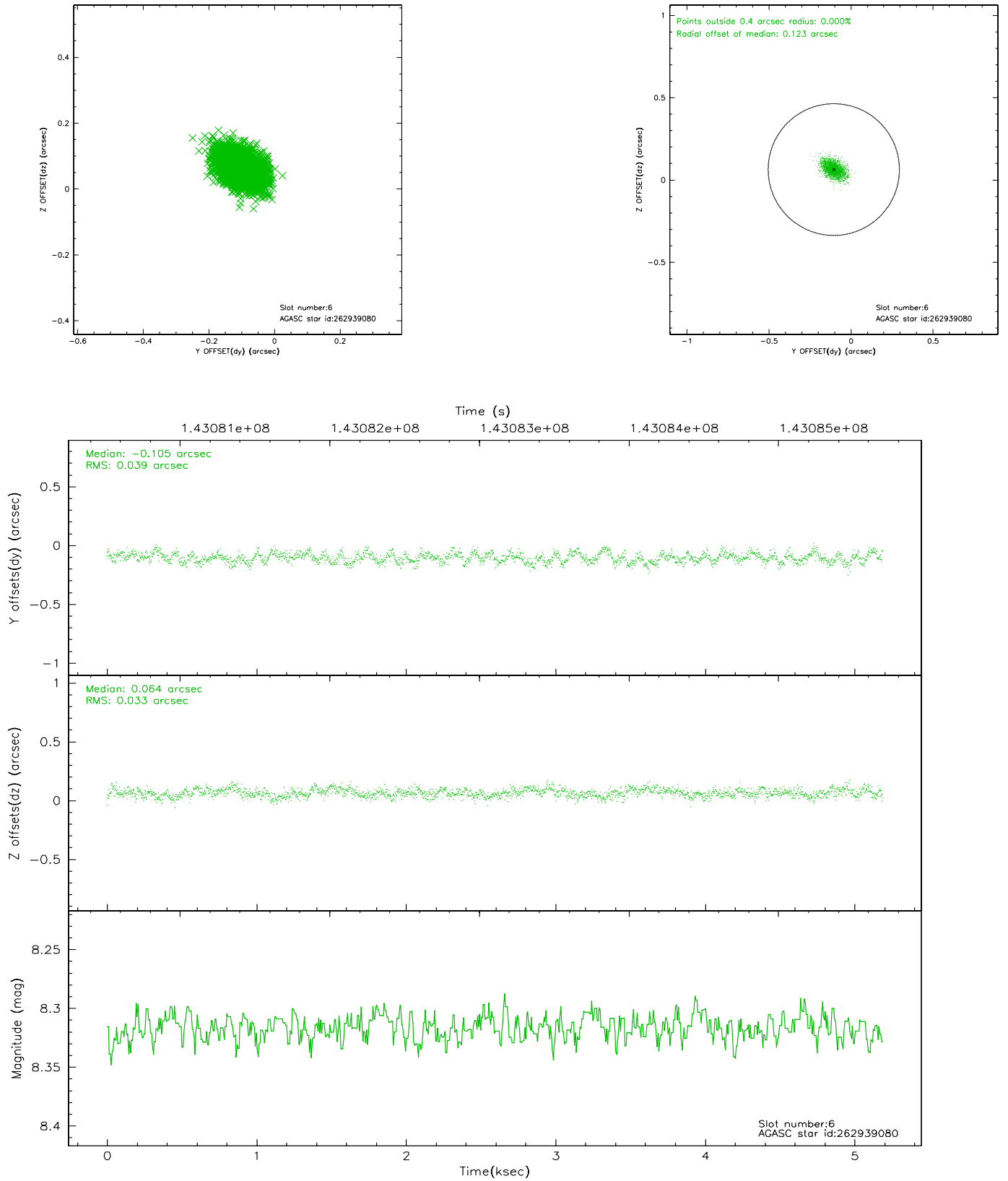
2.4.2 Slot 4



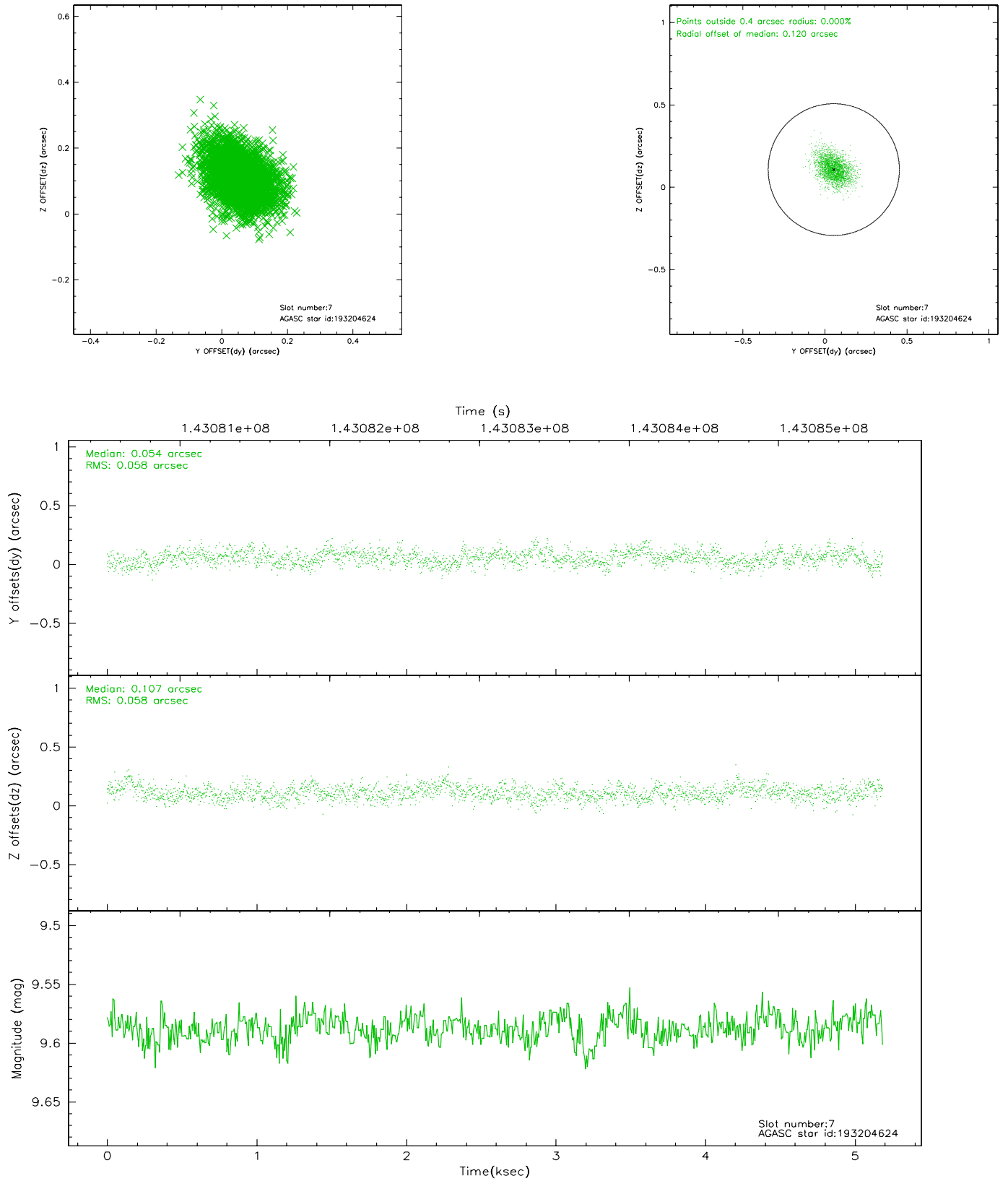
2.4.3 Slot 5



2.4.4 Slot 6

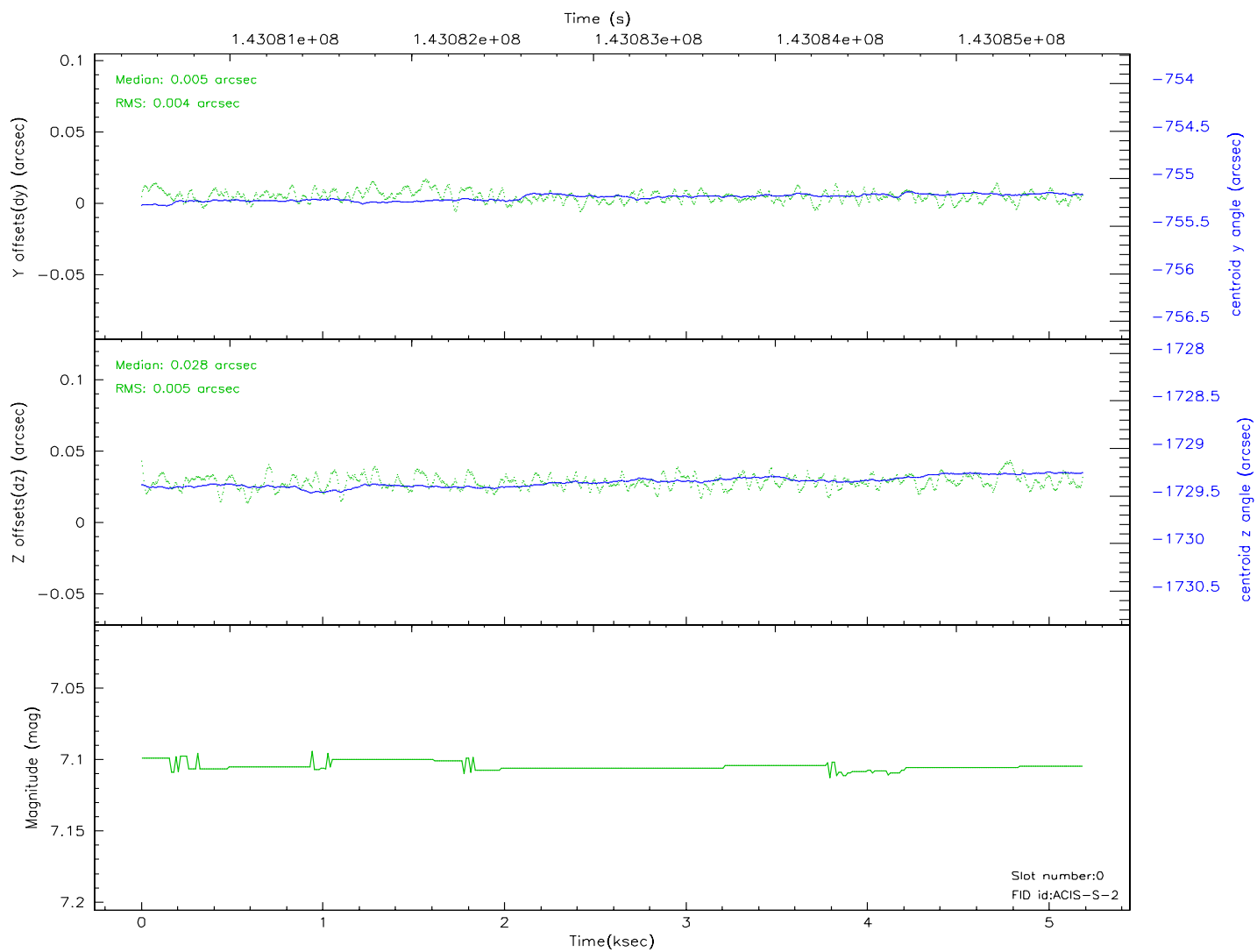
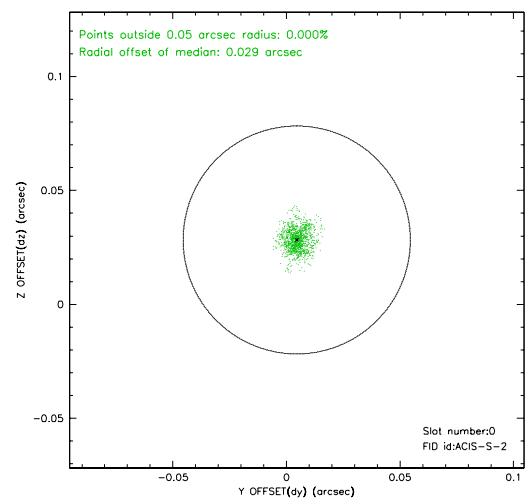
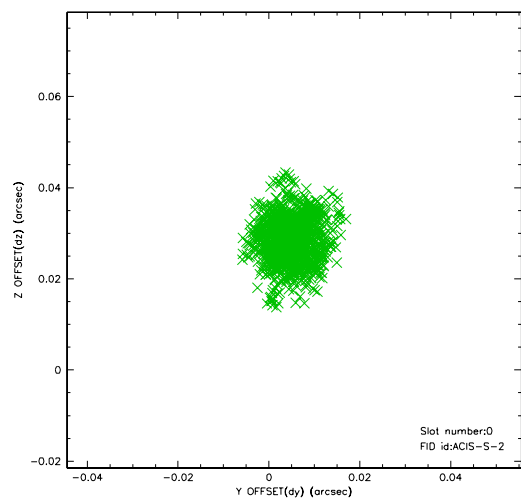


2.4.5 Slot 7

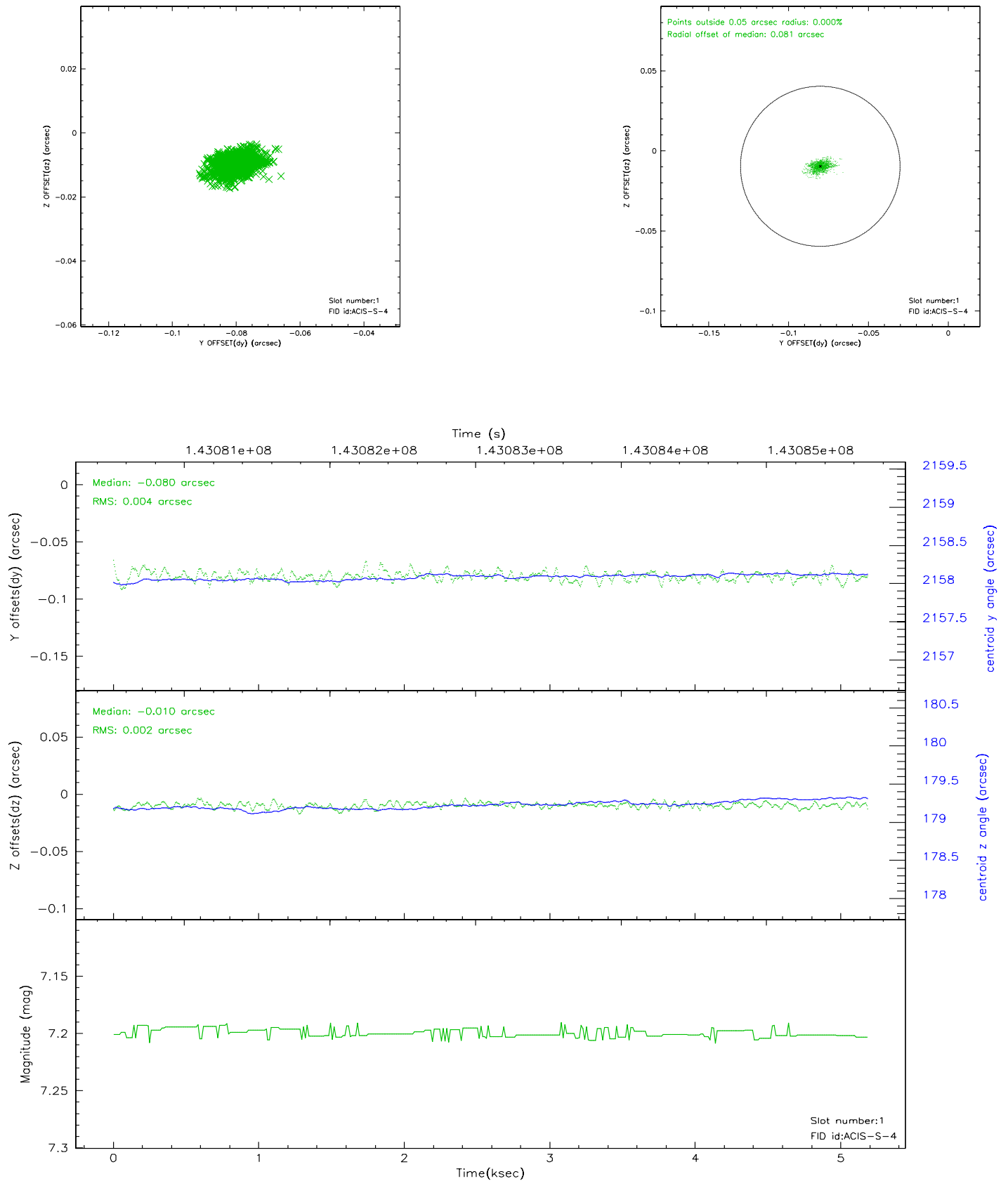


2.5 FID Slots

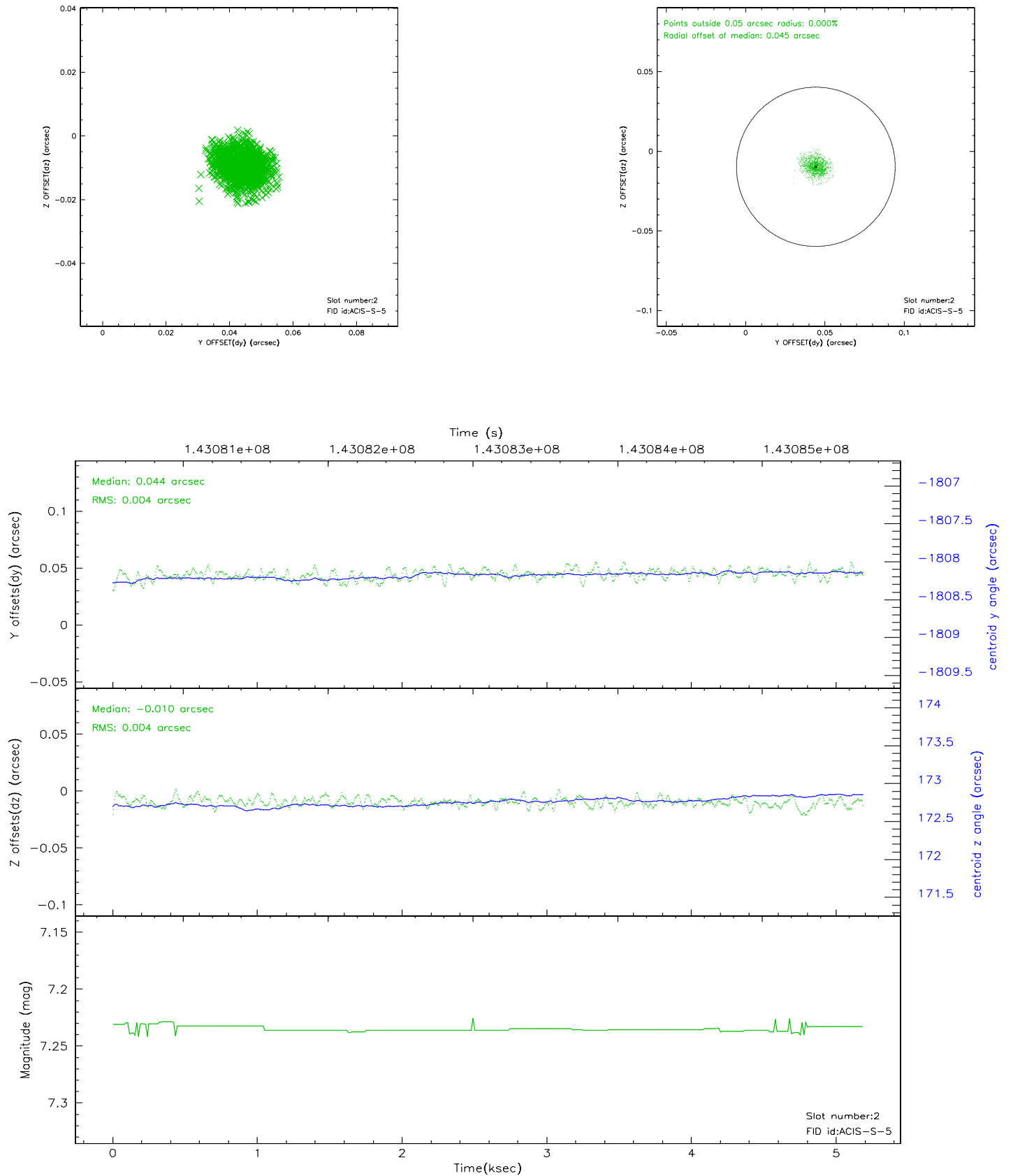
2.5.1 Slot 0



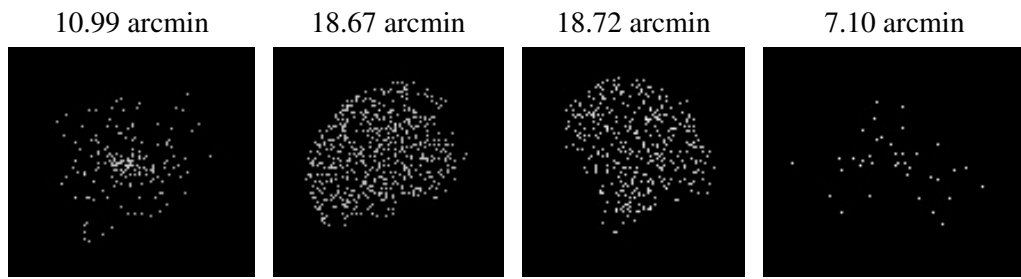
2.5.2 Slot 1



2.5.3 Slot 2



3 Point Sources



A Summary

A.1 Status

V&V Scientist	Beth Sundheim
V&V Date (YYYY-MM-DD)	2006.09.24
V&V Edition	1
V&V Disposition and Status	OK
V&V Charge Time	4.758

A.2 Comments