

# V&V Reference Report

## L2 ASCDS Version : 7.6.8.1

Observation 3309 - L2 Version 001  
Chandra X-Ray Center

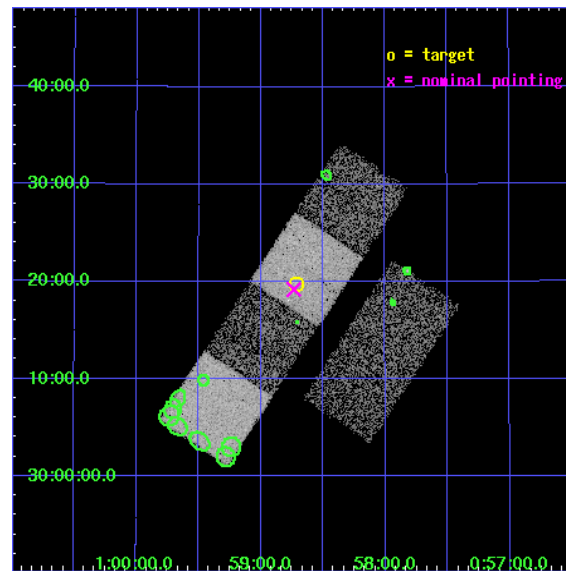
L2 Processing Date : Aug 31 2006

## Contents

<b>1</b>	<b>Front</b>	<b>2</b>
<b>2</b>	<b>OBI</b>	<b>3</b>
2.1	OBI . . . . .	3
2.1.1	Images . . . . .	3
2.1.2	Bias . . . . .	3
2.1.3	Parameters . . . . .	4
2.1.4	Events . . . . .	4
2.2	Compared Parameters . . . . .	5
2.3	Aspect . . . . .	6
2.4	Star Slots . . . . .	9
2.4.1	Slot 3 . . . . .	9
2.4.2	Slot 4 . . . . .	10
2.4.3	Slot 5 . . . . .	11
2.4.4	Slot 6 . . . . .	12
2.4.5	Slot 7 . . . . .	13
2.5	FID Slots . . . . .	14
2.5.1	Slot 0 . . . . .	14
2.5.2	Slot 1 . . . . .	15
2.5.3	Slot 2 . . . . .	16
<b>3</b>	<b>Point Sources</b>	<b>17</b>
<b>A</b>	<b>Summary</b>	<b>18</b>
A.1	Status . . . . .	18
A.2	Comments . . . . .	18

# 1 Front

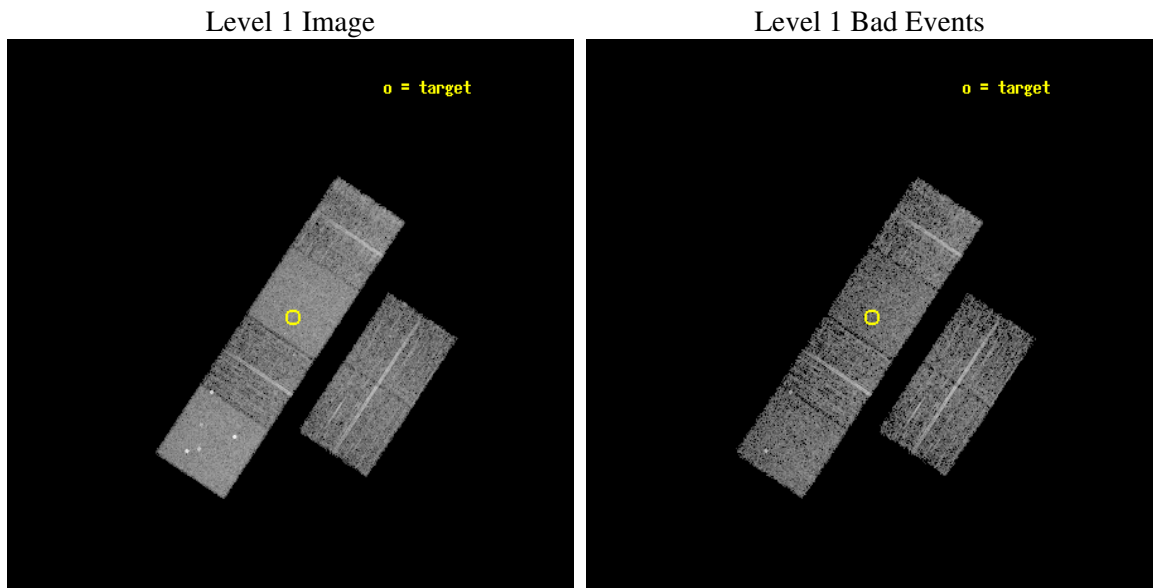
seq_num	900148
obs_id	3309
title	THE SHEEP SURVEY: WHAT KIND OF OBJECTS MAKE THE X-RAY BACKGROUND?
observer	Professor Kirpal Nandra
object	AX J0058.7+3019
dtcycle	0
cycle	P
ra_targ	14.679167
dec_targ	30.329167
ra_nom	14.683570655412
dec_nom	30.32023755987
roll_nom	303.54244966142
revision	2
ontime	4960.0000046194
livetime	4897.1934980074
ontime2	4960.0000046194
ontime3	4960.0000046194
ontime5	4960.0000046194
ontime6	4960.0000046194
ontime7	4960.0000046194
ontime8	4960.0000046194
l2events	59801



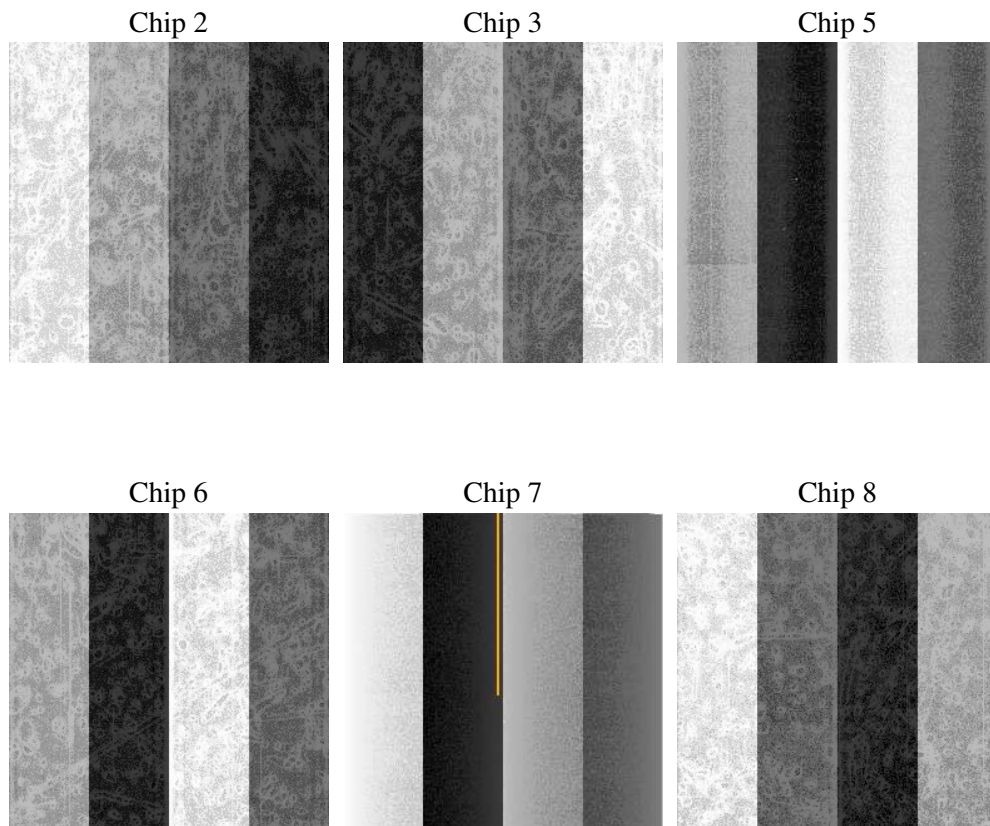
## 2 OBI

### 2.1 OBI

#### 2.1.1 Images



#### 2.1.2 Bias



### 2.1.3 Parameters

obi_num	0
ascdsver	7.6.8.1
caldsver	3.2.3
date	2006-08-31T11:40:48
revision	2

sched_exp_time	5000.000000
ontime	4965.209860459
ontime2	4965.2098305523
ontime3	4965.2098305523
ontime5	4965.209860459
ontime6	4965.2098305523
ontime7	4965.209860459
ontime8	4965.2098305523
l1events	240090

### 2.1.4 Events

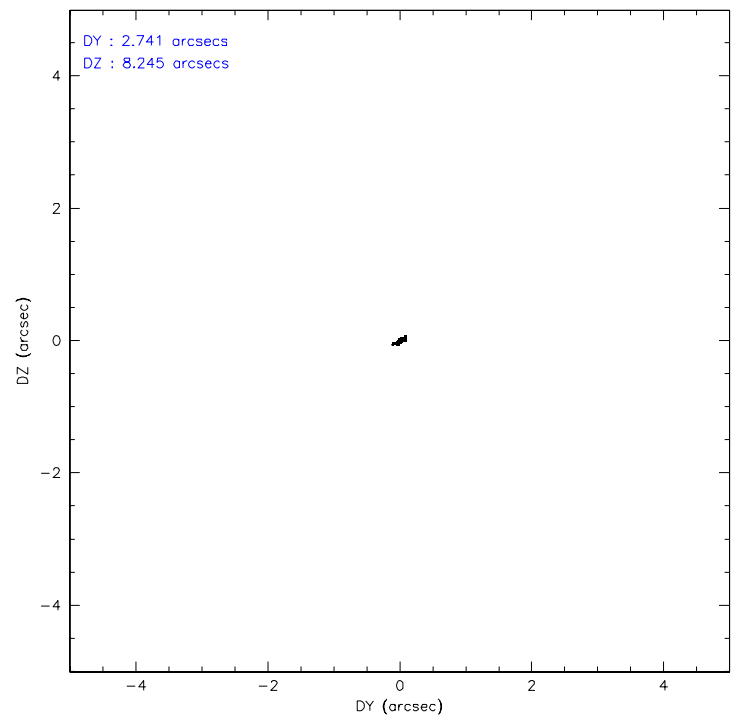
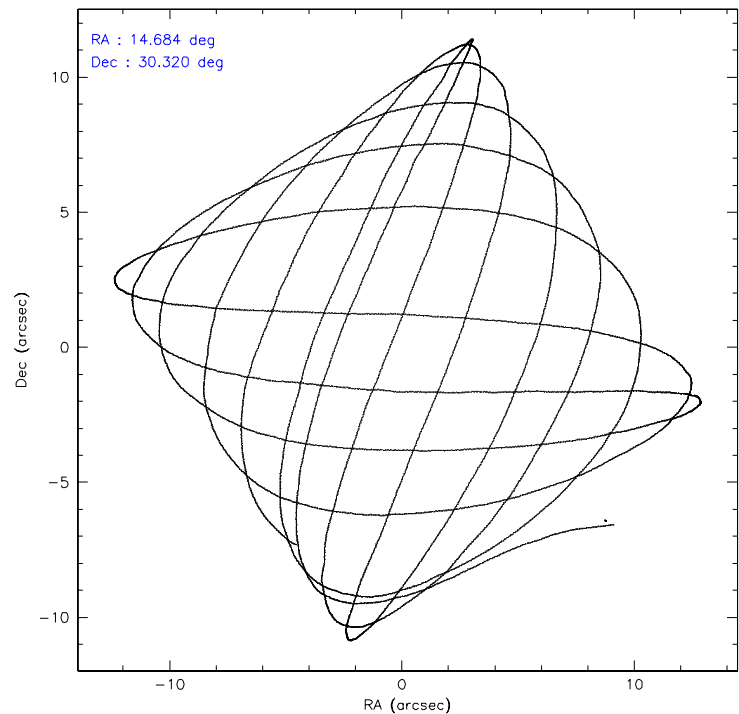
	ccd 2	ccd 3	ccd 5	ccd 6	ccd 7	ccd 8
level 1 events	33032	31340	54369	32534	48068	40747
rejected events	29296	27464	26732	28383	26333	31863
rejected %	88%	87%	49%	87%	54%	78%

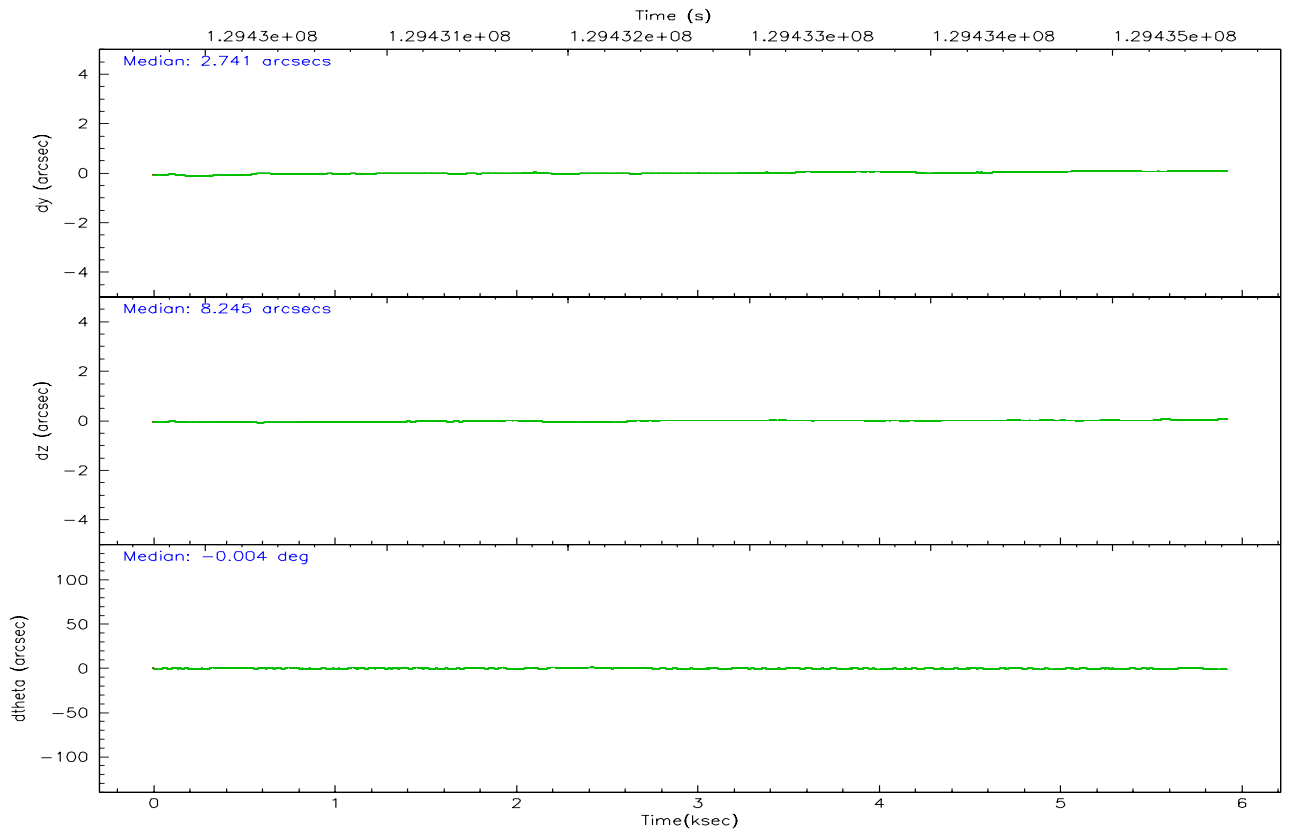
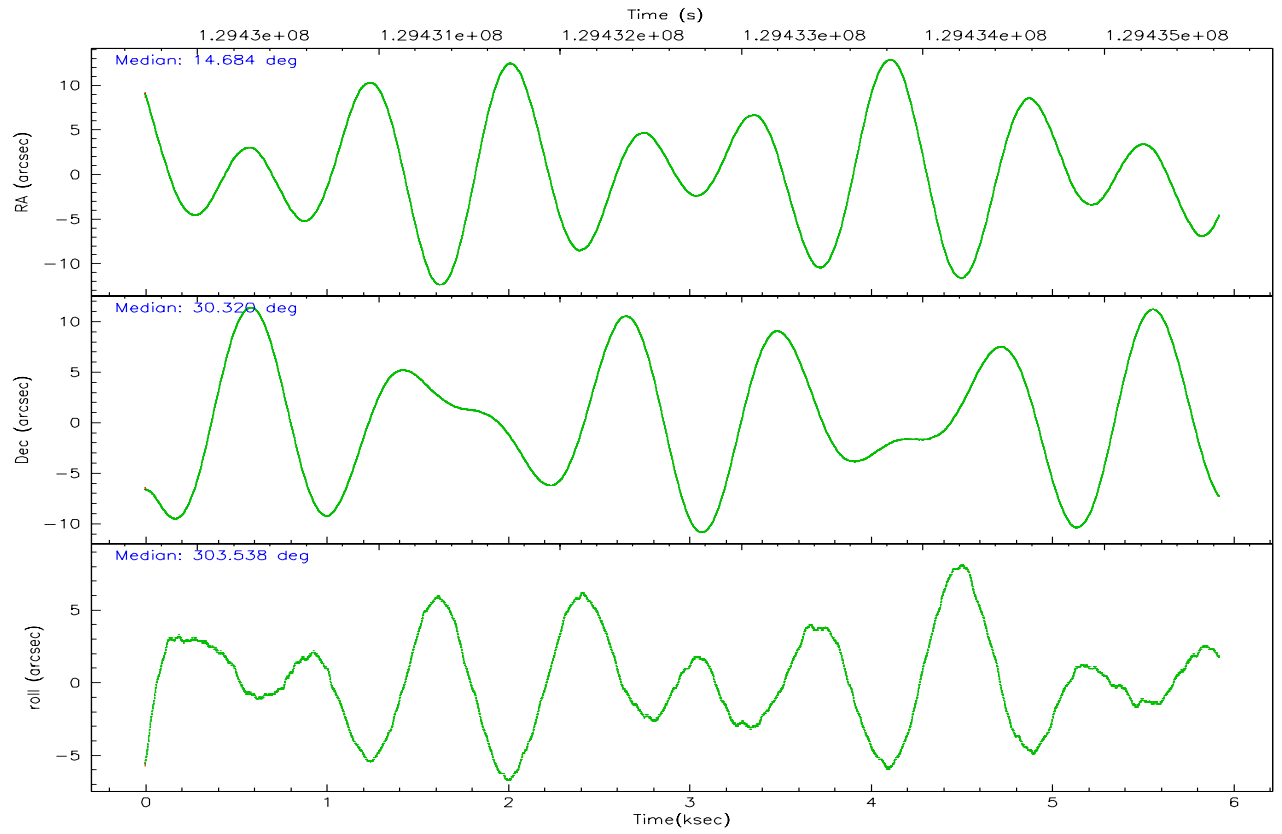
	ccd 2	ccd 3	ccd 5	ccd 6	ccd 7	ccd 8
grade 0 events	1627	1758	3892	1919	1640	3025
	4%	5%	7%	5%	3%	7%
grade 1 events	16	19	149	20	20	29
	0%	0%	0%	0%	0%	0%
grade 2 events	799	762	8425	818	5072	1867
	2%	2%	15%	2%	10%	4%
grade 3 events	343	334	718	363	1220	963
	1%	1%	1%	1%	2%	2%
grade 4 events	313	359	725	338	1229	891
	0%	1%	1%	1%	2%	2%
grade 5 events	1126	1231	2447	1401	2924	1763
	3%	3%	4%	4%	6%	4%
grade 6 events	656	665	13894	714	12585	2148
	1%	2%	25%	2%	26%	5%
grade 7 events	28152	26212	24119	26961	23378	30061
	85%	83%	44%	82%	48%	73%

## 2.2 Compared Parameters

Parameter	Planned	Actual	Parameter	Planned	Actual
Instrument	ACIS	ACIS	Obspar format version number	6	6
Detector	ACIS-235678	ACIS-235678	Obspar file type	PREDICTED	ACTUAL
Grating	NONE	NONE	Obspar update status	NONE	UPDATED
Data mode	FAINT	FAINT	On-chip summing requested	N	N
Observation mode	POINTING	POINTING	Subarray requested	NONE	NONE
Pointing RA	14.655195	14.68357065541245	Alternating exposures requested	N	N
Pointing Dec	30.332083	30.32023755987026	Primary exposure time	0.000000	3.2
Pointing Roll	303.400160	303.5424496614207			
SIM focus pos (mm)	-0.684267	-0.6828225247311905			
SIM defocus (mm)	0	0.001444936568705701			
SIM translation stage pos (mm)	-190.132523	-190.1425803651734			
SIM translation stage offset (mm)	0	0.01005778216563158			
Observation start time	129430630.184000	129429304.84061			
Observation start date	2002-02-07T00:56:06	2002-02-07T00:35:04			
Observation end time	129435630.184000	129436124.67838			
Observation end date	2002-02-07T02:19:26	2002-02-07T02:28:44			
Read mode	TIMED	TIMED			

2.3 Aspect





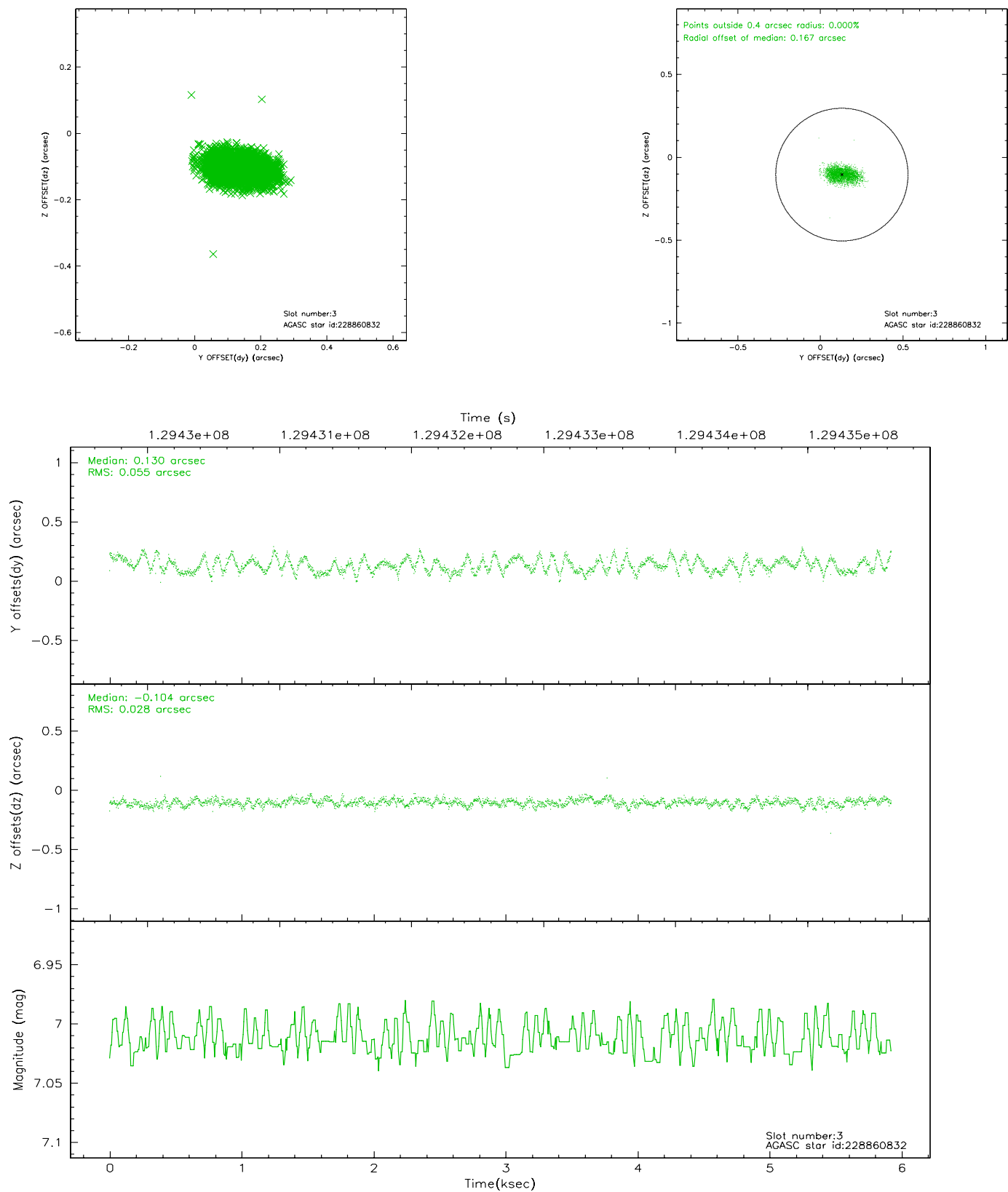
### Slot Statistics

slot	status	id	mag	n_pts	med_dy	med_dz	dr1	dr2	ra	dec	mean_y	mean_z
0	FID	ACIS-S-2	7.11	1445	0.007	0.022	0.006	0.011	0.000000	0.000000	-755.39	-1729.36
1	FID	ACIS-S-4	7.20	1445	-0.093	-0.010	0.005	0.009	0.000000	0.000000	2157.35	178.04
2	FID	ACIS-S-5	7.24	1445	0.054	-0.004	0.006	0.010	0.000000	0.000000	-1806.88	172.88
3	GUIDE	228860832	7.01	2890	0.130	-0.104	0.065	0.105	14.474030	29.521365	2124.59	-2080.63
4	GUIDE	298454752	8.38	2890	-0.142	0.107	0.065	0.104	14.607216	31.096770	-2378.93	1390.81
5	GUIDE	298454712	8.47	2890	0.144	0.143	0.053	0.086	15.554467	30.162971	2039.35	2008.11
6	GUIDE	298451464	9.25	2889	-0.030	-0.140	0.076	0.122	14.113380	30.265595	-729.84	-1535.90
7	GUIDE	298453544	9.34	2885	-0.100	-0.005	0.077	0.123	14.058324	30.732014	-2222.80	-747.85

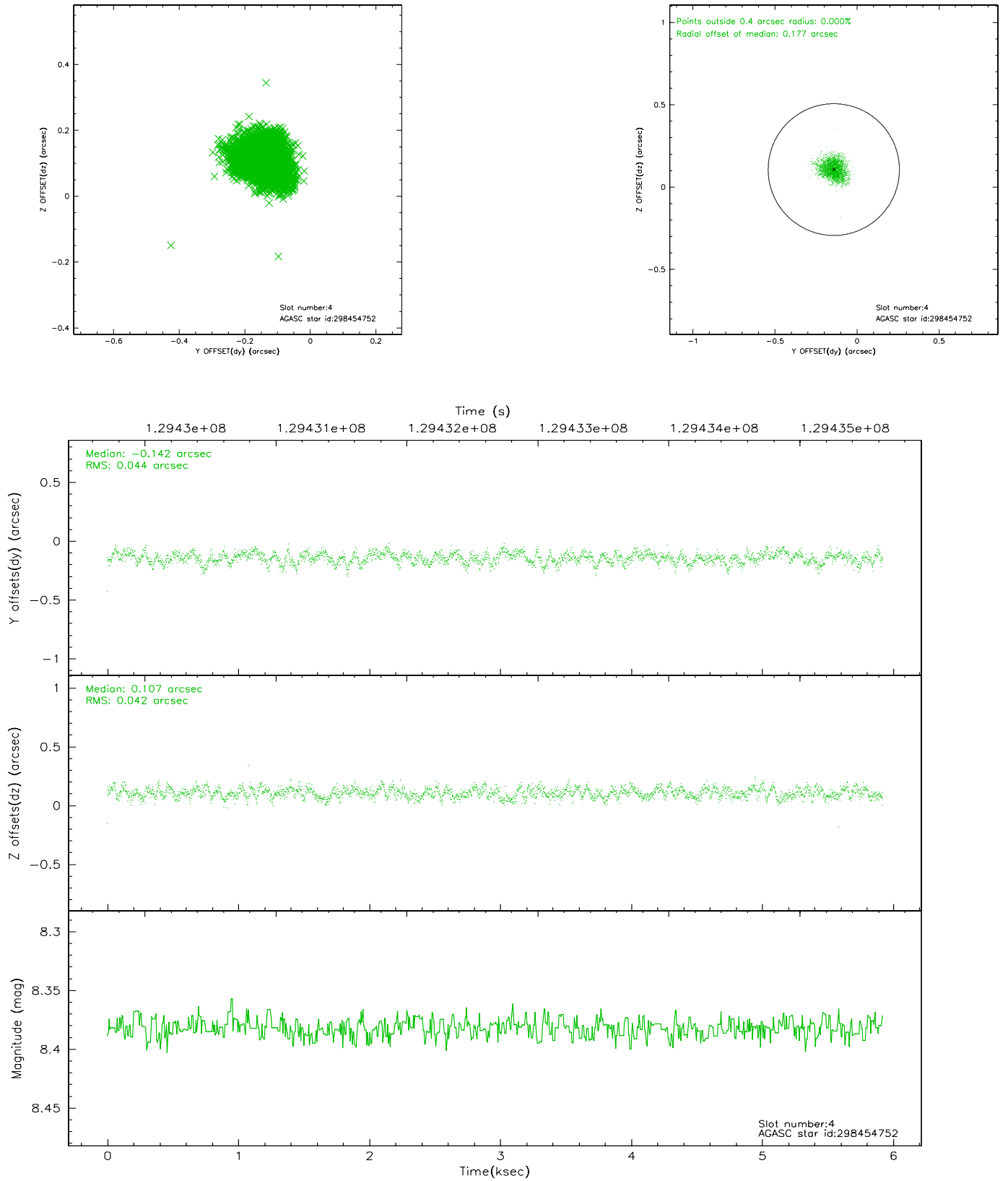


## 2.4 Star Slots

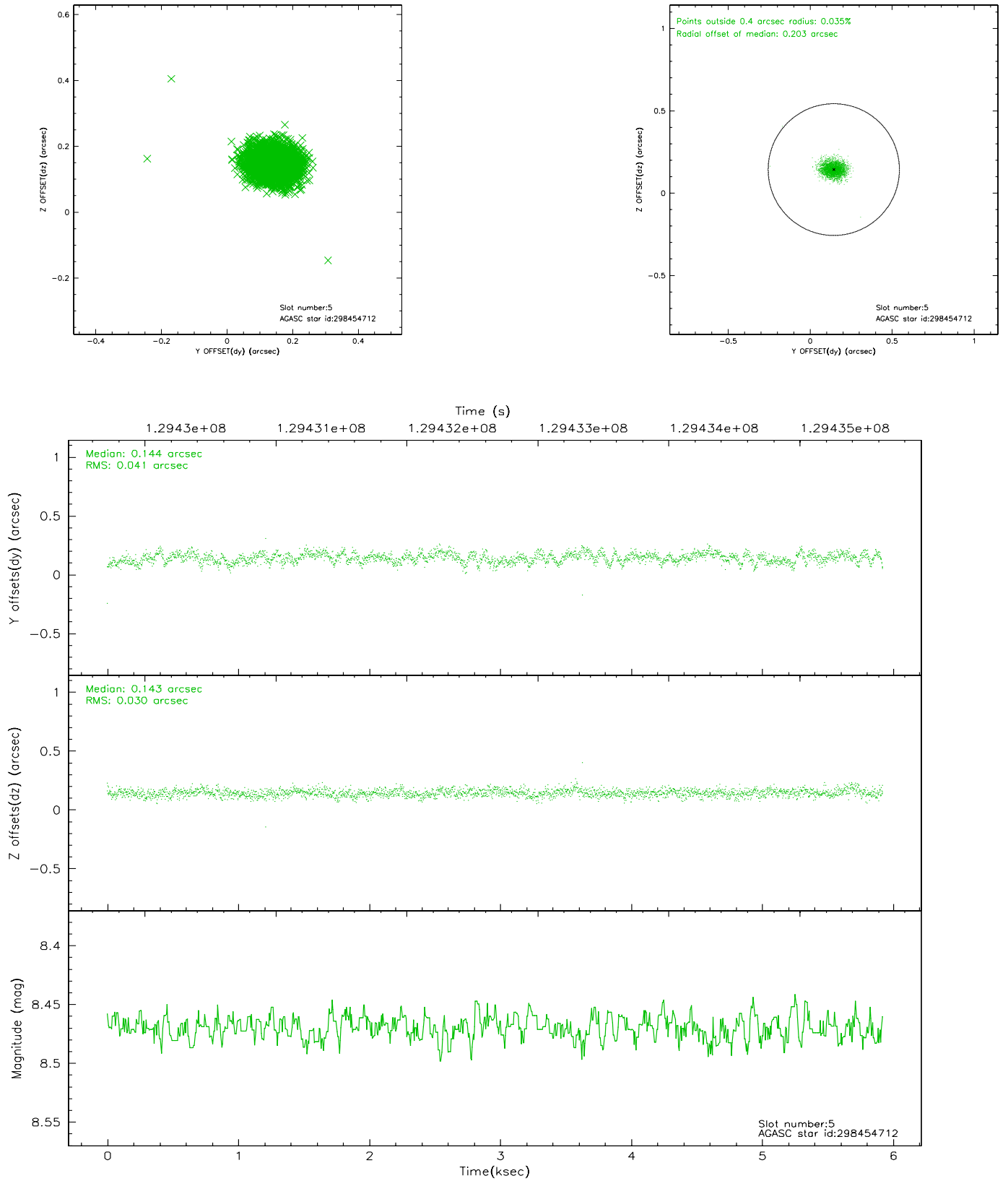
### 2.4.1 Slot 3



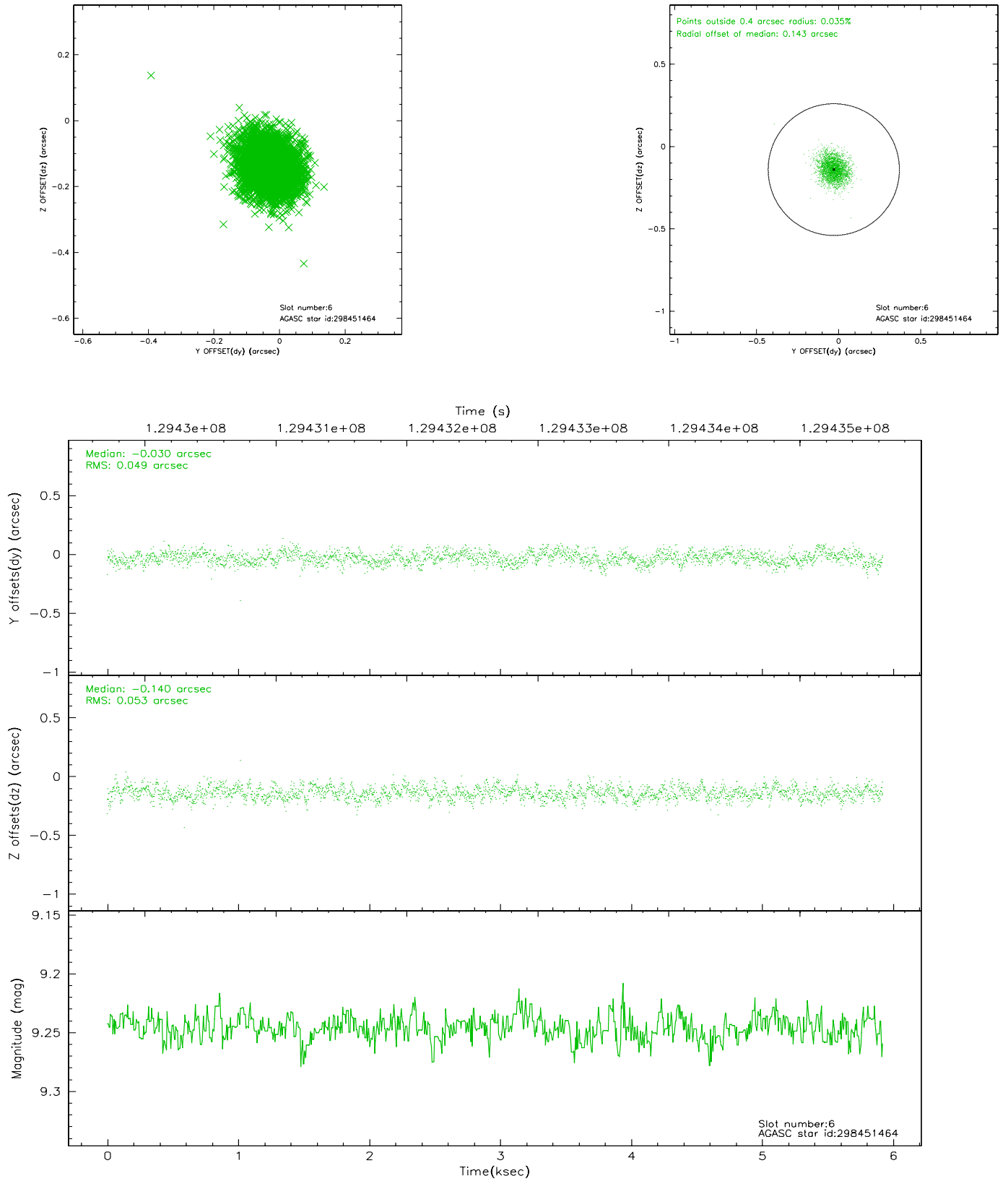
## 2.4.2 Slot 4



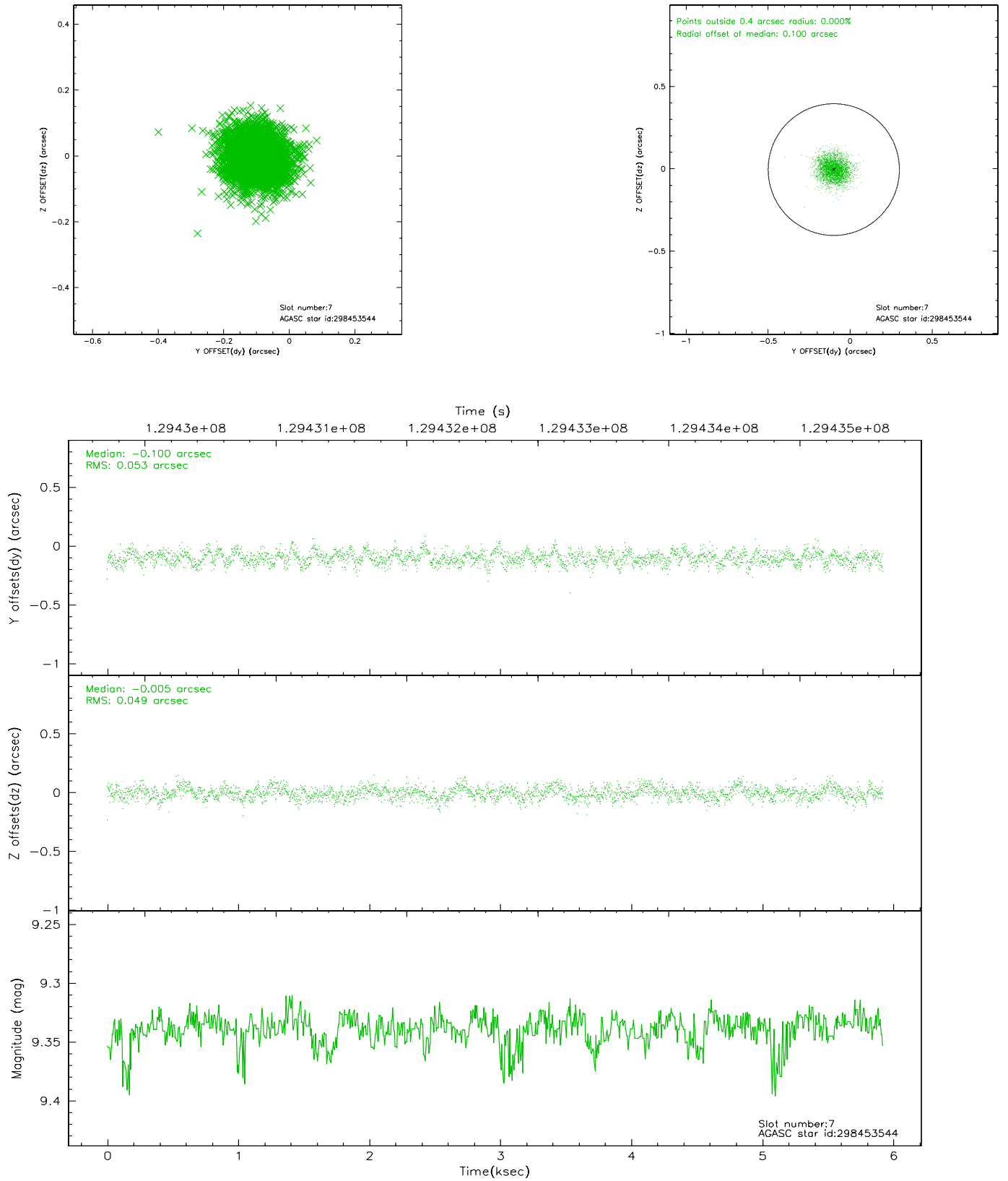
### 2.4.3 Slot 5



## 2.4.4 Slot 6

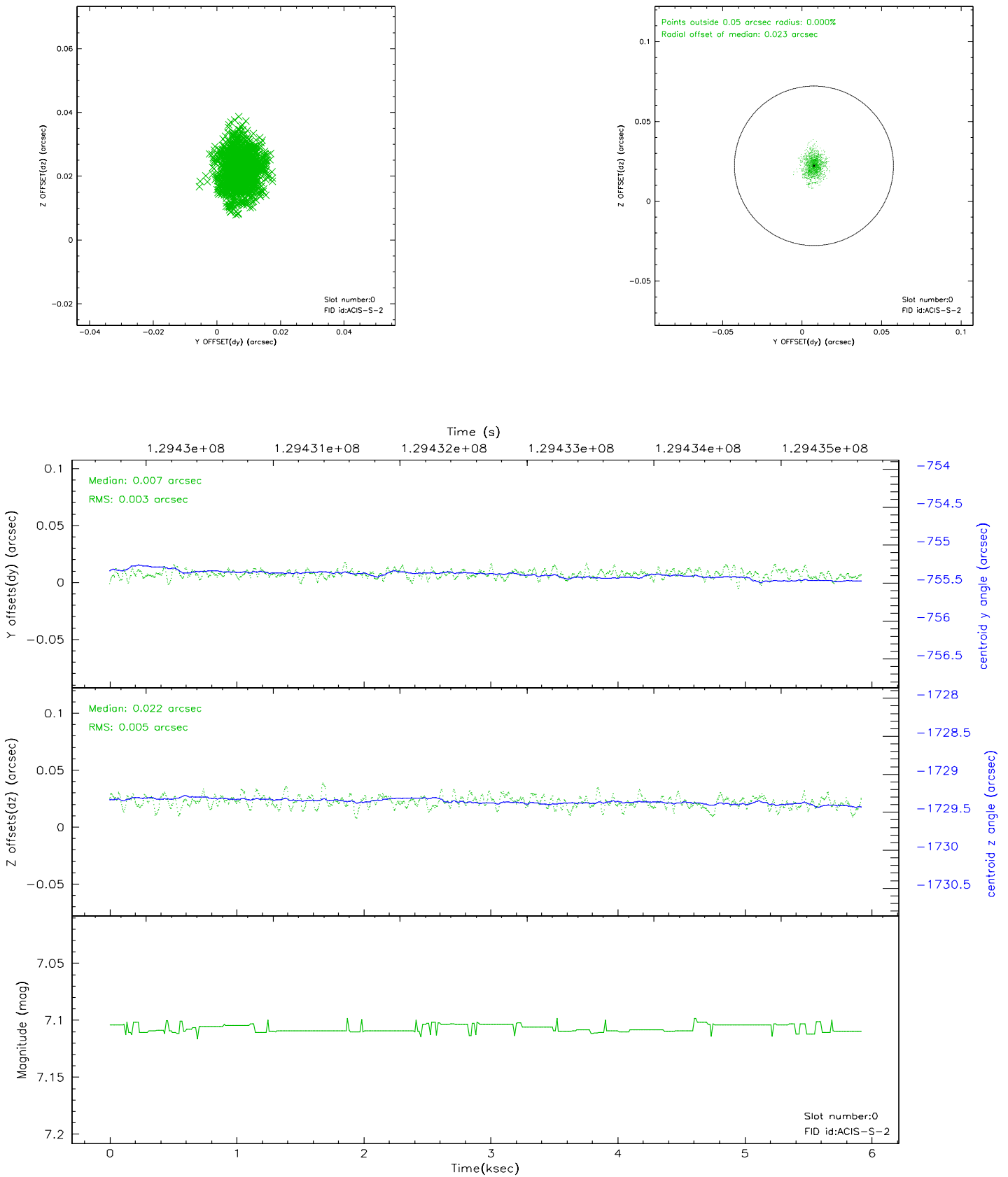


## 2.4.5 Slot 7

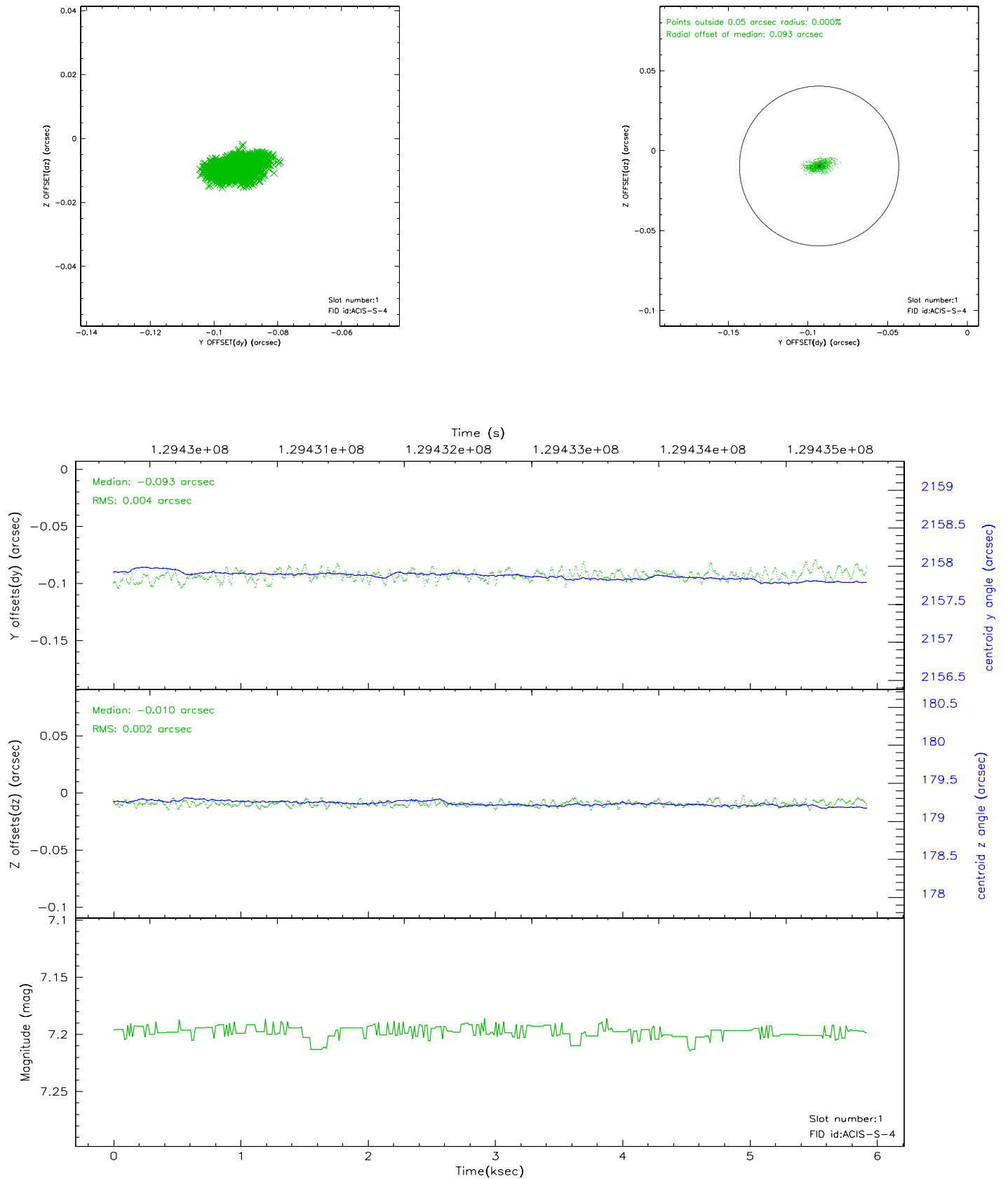


## 2.5 FID Slots

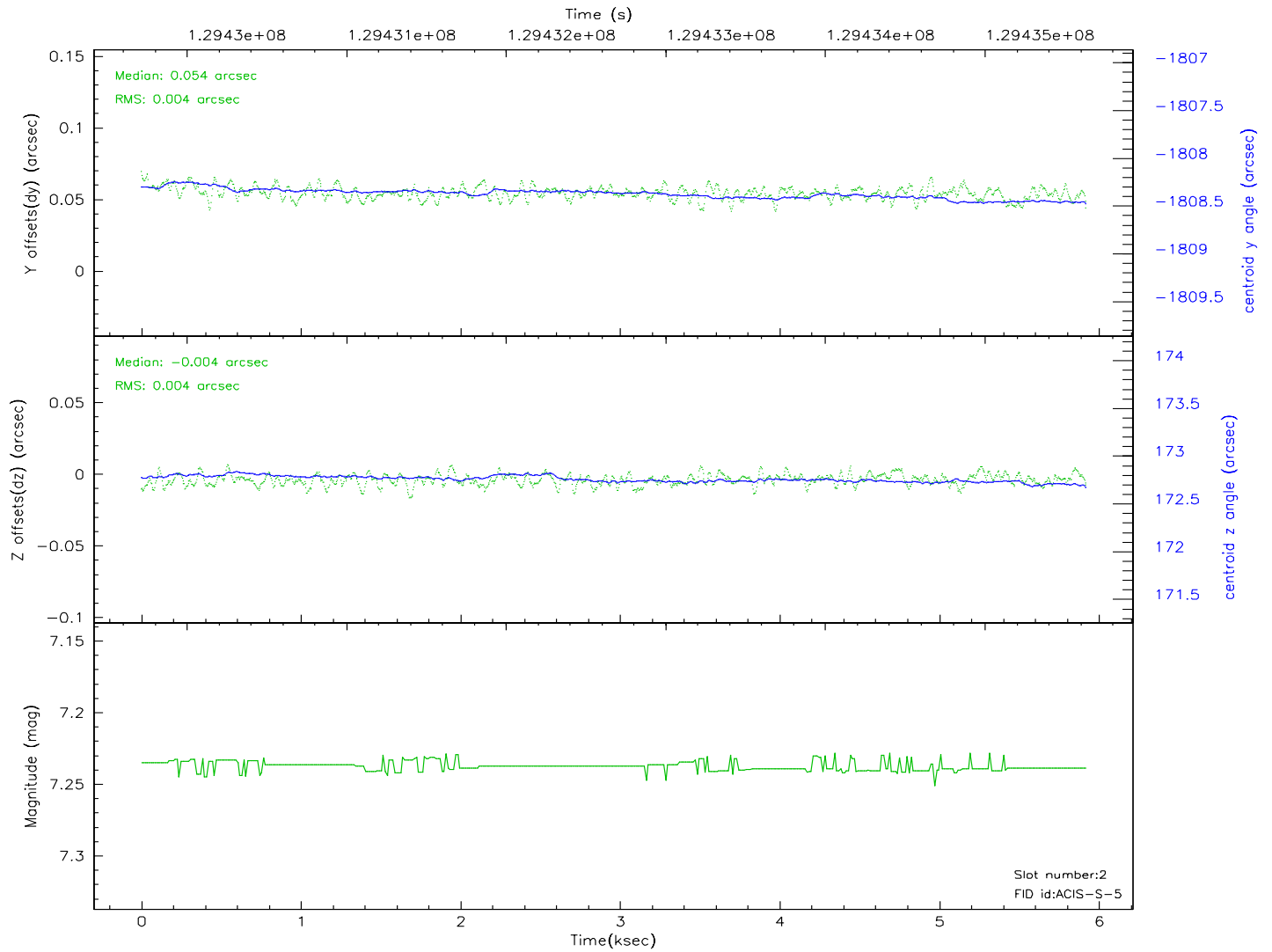
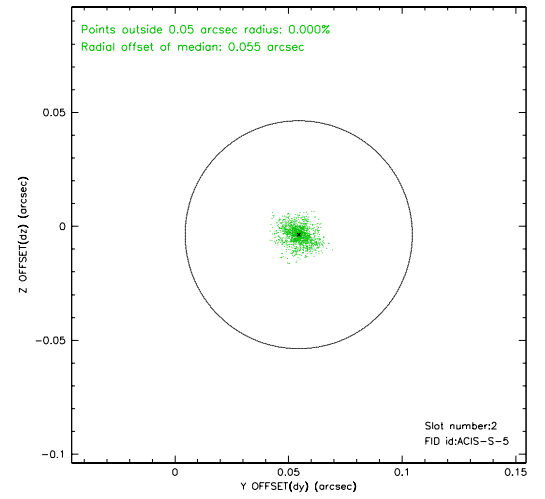
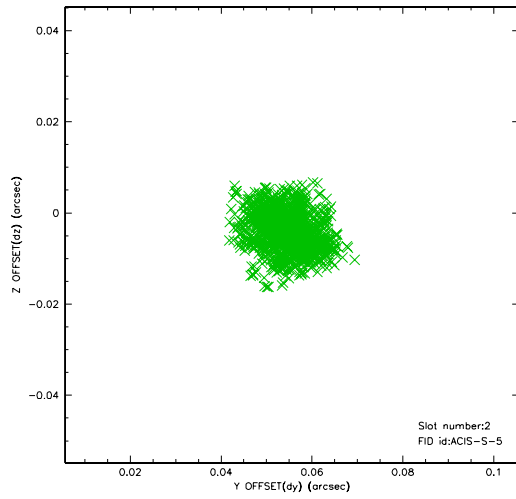
### 2.5.1 Slot 0



## 2.5.2 Slot 1

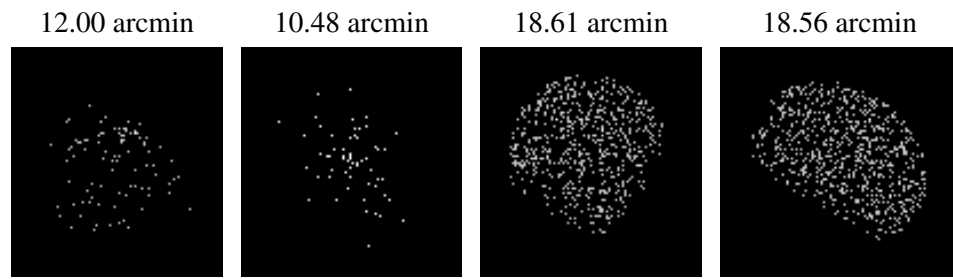


## 2.5.3 Slot 2





### 3 Point Sources



## A Summary

### A.1 Status

V&V Scientist	Beth Sundheim
V&V Date (YYYY-MM-DD)	2006.08.31
V&V Edition	1
V&V Disposition and Status	OK
V&V Charge Time	4.96

### A.2 Comments