

# V&V Reference Report

## L2 ASCDS Version : 7.6.9

Observation 3404 - L2 Version 001  
Chandra X-Ray Center

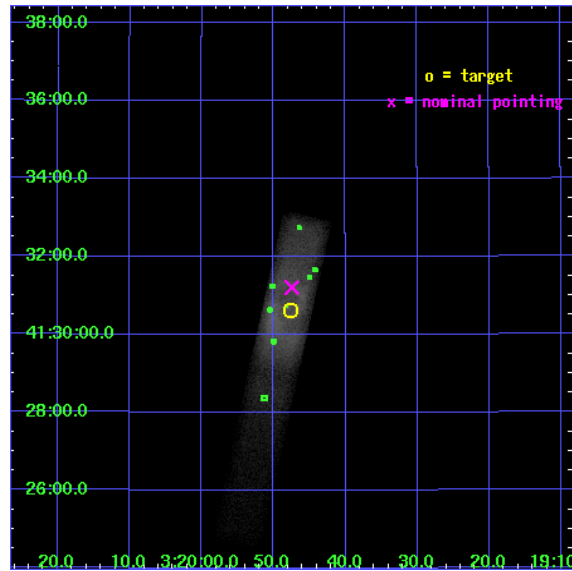
L2 Processing Date : Sep 30 2006

## Contents

<b>1</b>	<b>Front</b>	<b>2</b>
<b>2</b>	<b>OBI</b>	<b>3</b>
2.1	OBI . . . . .	3
2.1.1	Images . . . . .	3
2.1.2	Bias . . . . .	3
2.1.3	Parameters . . . . .	4
2.1.4	Events . . . . .	4
2.2	Compared Parameters . . . . .	5
2.3	Aspect . . . . .	6
2.4	Star Slots . . . . .	9
2.4.1	Slot 3 . . . . .	9
2.4.2	Slot 4 . . . . .	10
2.4.3	Slot 5 . . . . .	11
2.4.4	Slot 6 . . . . .	12
2.4.5	Slot 7 . . . . .	13
2.5	FID Slots . . . . .	14
2.5.1	Slot 0 . . . . .	14
2.5.2	Slot 1 . . . . .	15
2.5.3	Slot 2 . . . . .	16
<b>3</b>	<b>Point Sources</b>	<b>17</b>
<b>A</b>	<b>Summary</b>	<b>18</b>
A.1	Status . . . . .	18
A.2	Comments . . . . .	18

# 1 Front

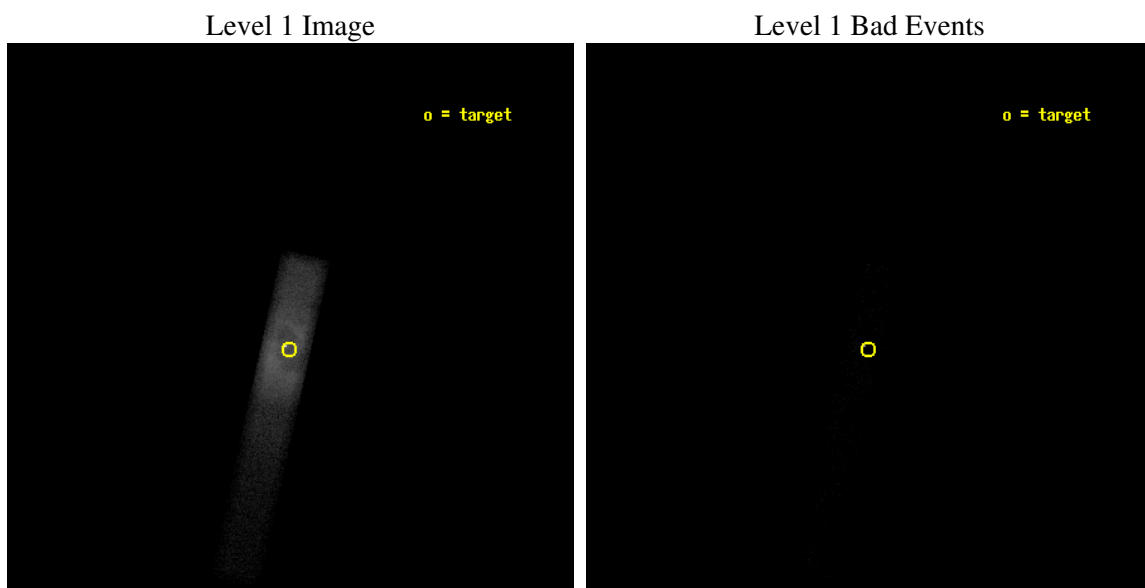
seq_num	800209
obs_id	3404
title	A DETAILED STUDY OF THE CORE OF THE PERSEUS CLUSTER
observer	Prof Andrew Fabian
object	ABELL 426
dtcycle	0
cycle	P
ra_targ	49.948333
dec_targ	41.510278
ra_nom	49.947782430404
dec_nom	41.519953630388
roll_nom	102.46994721043
revision	2
ontime	5858.400087297
livetime	5313.2596474669
ontime7	5858.400087297
l2events	112038



## 2 OBI

### 2.1 OBI

#### 2.1.1 Images



#### 2.1.2 Bias

Chip 7



### 2.1.3 Parameters

obi_num	0
ascdsver	7.6.9
caldbver	3.2.3
date	2006-09-30T11:21:08
revision	2

sched_exp_time	5000.000000
ontime	5859.1426808834
ontime7	5859.1426808834
l1events	118612

### 2.1.4 Events

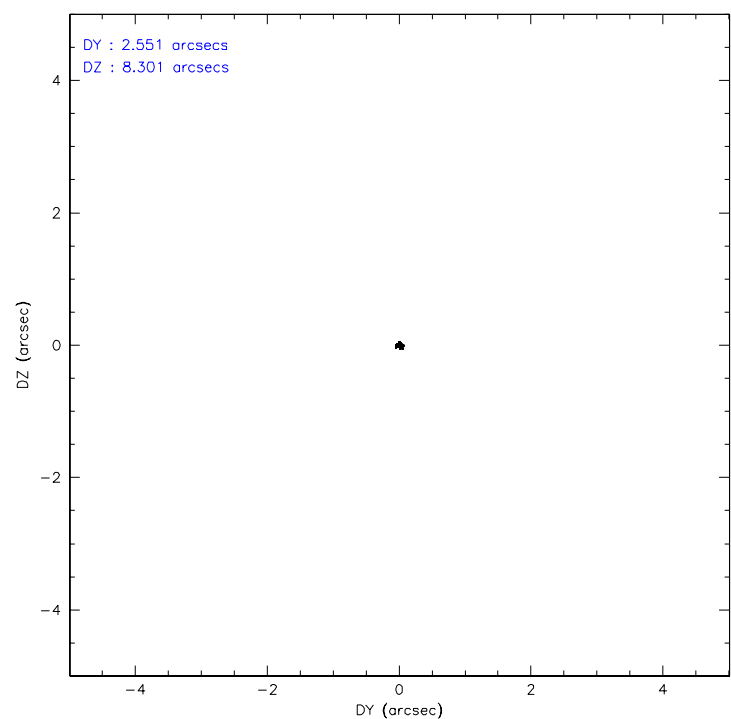
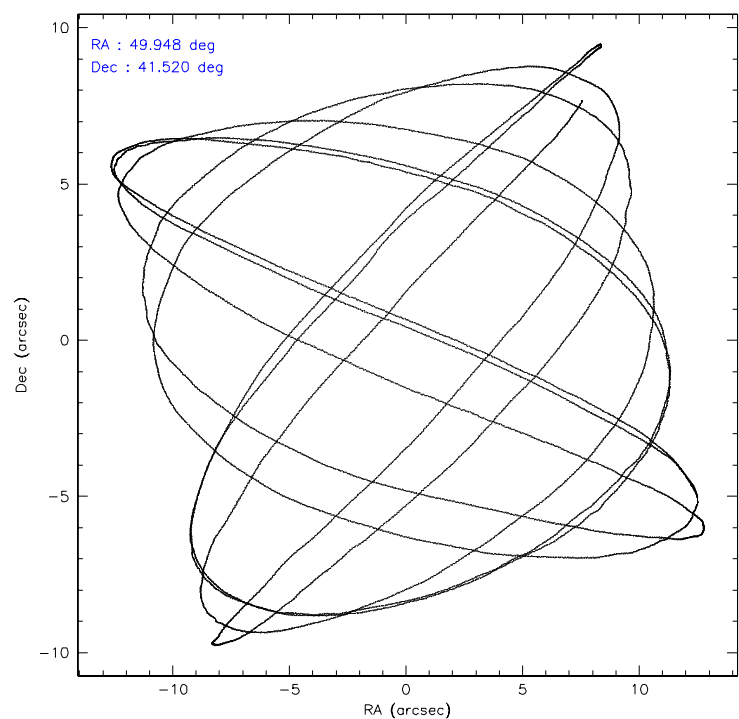
	<b>ccd 7</b>
level 1 events	118612
rejected events	5543
rejected %	4%

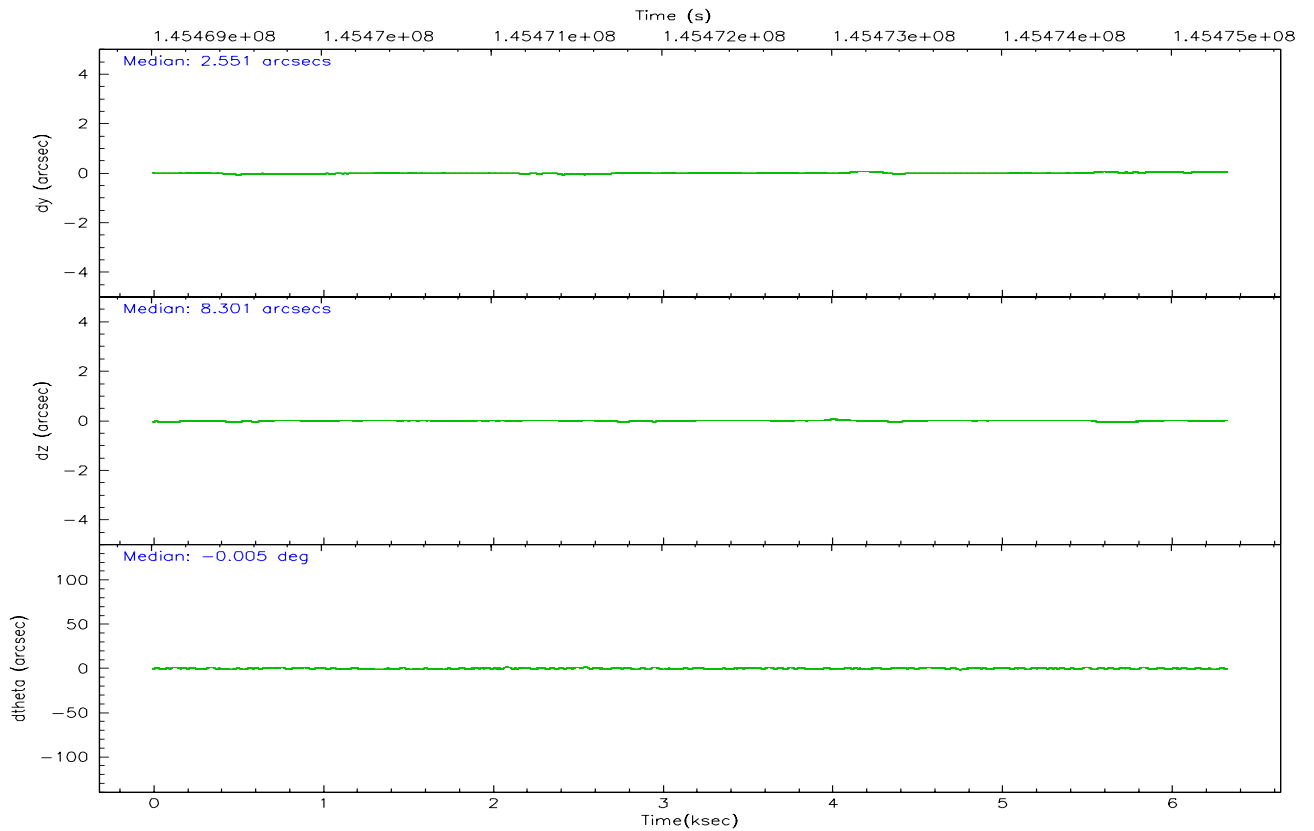
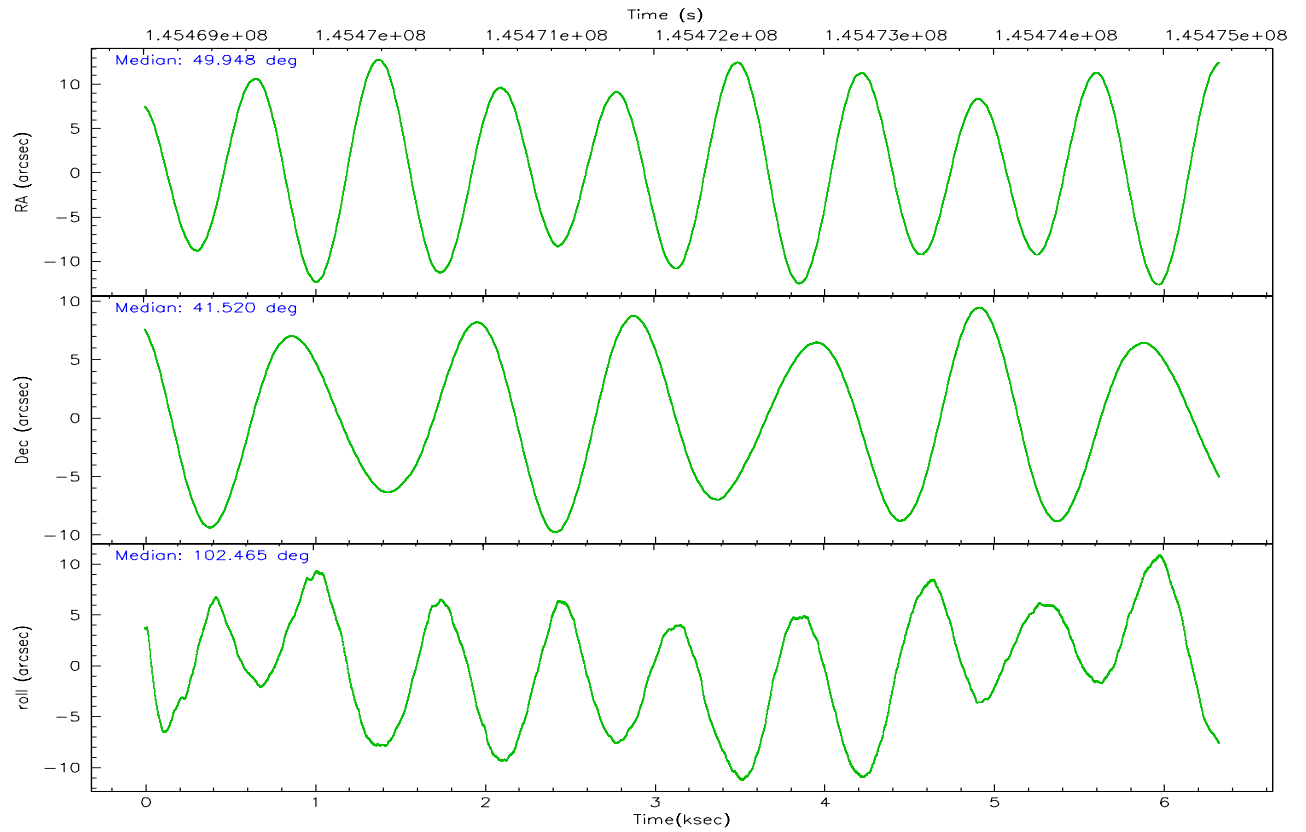
	<b>ccd 7</b>
grade 0 events	29887
	25%
grade 1 events	106
	0%
grade 2 events	31084
	26%
grade 3 events	12815
	10%
grade 4 events	12595
	10%
grade 5 events	1511
	1%
grade 6 events	26702
	22%
grade 7 events	3912
	3%

## 2.2 Compared Parameters

Parameter	Planned	Actual	Parameter	Planned	Actual
Instrument	ACIS	ACIS	Obspar format version number	6	6
Detector	ACIS-7	ACIS-7	Obspar file type	PREDICTED	ACTUAL
Grating	NONE	NONE	Obspar update status	NONE	UPDATED
Data mode	FAINT	FAINT	Number of optional ACIS chips dropped	0	0
Observation mode	POINTING	POINTING	On-chip summing requested	N	N
Pointing RA	49.972707	49.94778243040358	Subarray requested	1/8	1/8
Pointing Dec	41.500106	41.5199536303878	Subarray start row	0	449
Pointing Roll	102.296800	102.4699472104345	Subarray row count	1024	128
SIM focus pos (mm)	-0.684267	-0.6828225247311905	Alternating exposures requested	N	N
SIM defocus (mm)	0	0.001444936568705701	Primary exposure time	0.000000	0.4
SIM translation stage pos (mm)	-190.132523	-190.1400660498719			
SIM translation stage offset (mm)	0	0.00754346686406393			
Observation start time	145470330.184000	145468800.18192			
Observation start date	2002-08-11T16:24:26	2002-08-11T16:00:00			
Observation end time	145475330.184000	145475858.84471			
Observation end date	2002-08-11T17:47:46	2002-08-11T17:57:38			
Read mode	TIMED	TIMED			

## 2.3 Aspect





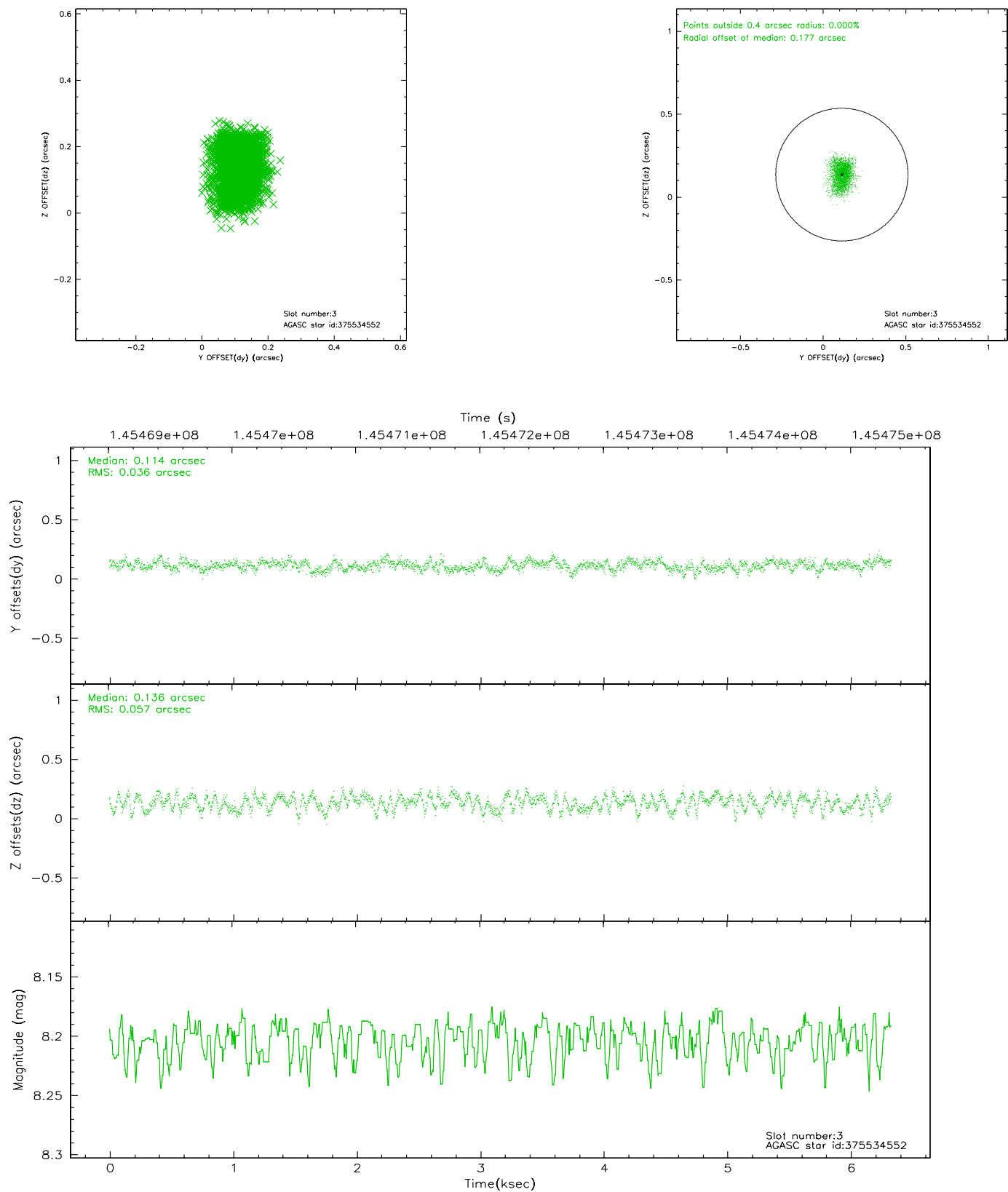
### Slot Statistics

slot	status	id	mag	n_pts	med_dy	med_dz	dr1	dr2	ra	dec	mean_y	mean_z
0	FID	ACIS-S-1	7.19	1544	0.028	0.022	0.006	0.011	0.000000	0.000000	940.87	-1725.11
1	FID	ACIS-S-2	7.11	1543	-0.025	0.043	0.006	0.011	0.000000	0.000000	-754.56	-1730.59
2	FID	ACIS-S-6	7.36	1544	-0.023	-0.061	0.006	0.010	0.000000	0.000000	406.08	815.19
3	GUIDE	375534552	8.20	3086	0.114	0.136	0.072	0.116	50.877490	41.206927	-1540.76	-2171.67
4	GUIDE	376057824	8.35	3087	-0.133	0.230	0.079	0.122	50.665569	41.926280	1110.26	-2141.41
5	GUIDE	373817952	8.74	3088	0.190	-0.147	0.061	0.101	49.913424	40.978510	-1800.11	556.93
6	GUIDE	373826120	8.91	3086	0.062	-0.097	0.073	0.117	49.738165	41.186341	-968.33	861.84
7	GUIDE	374356920	9.47	3085	-0.236	-0.116	0.098	0.157	49.733740	42.091452	2215.96	171.07

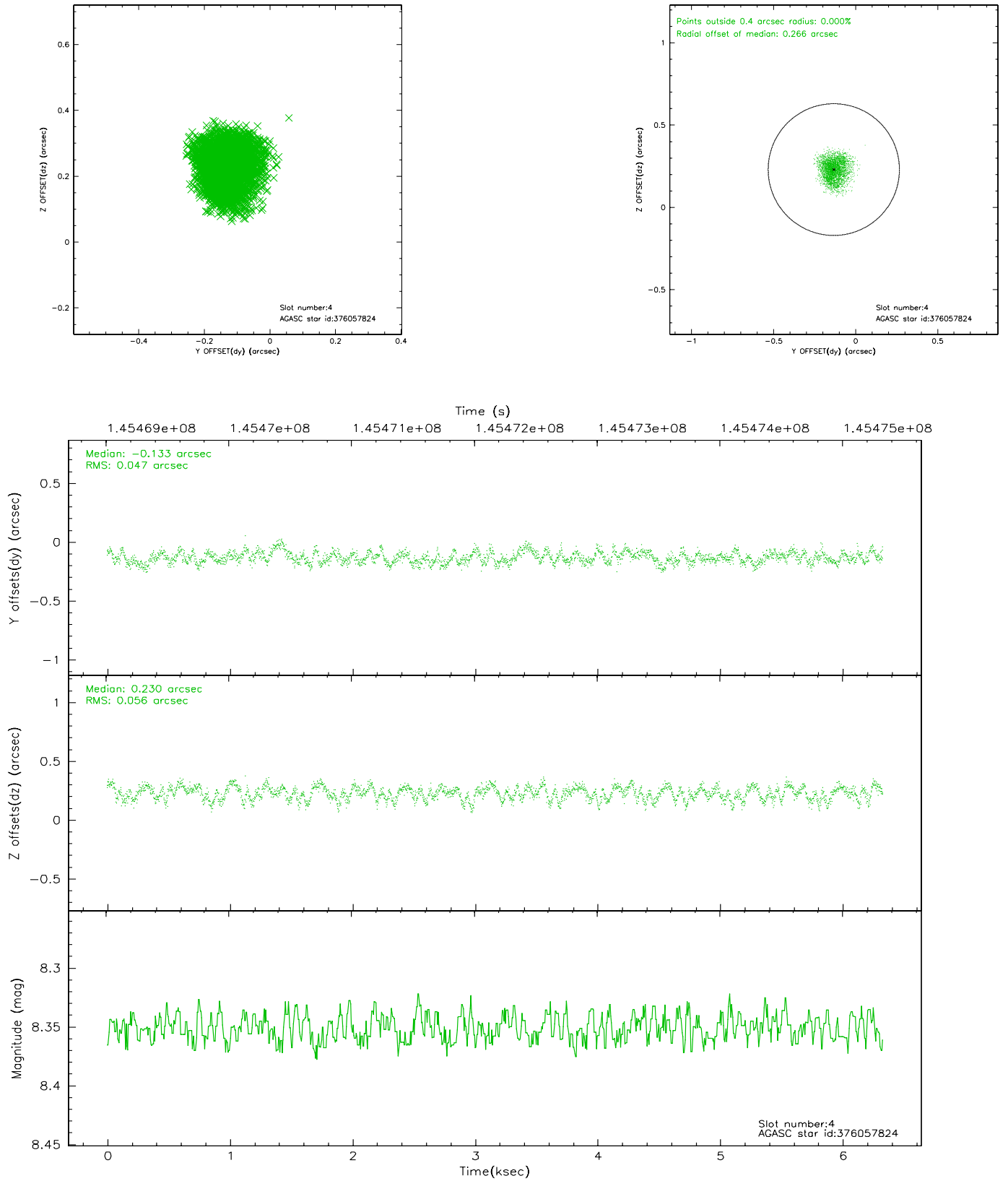


## 2.4 Star Slots

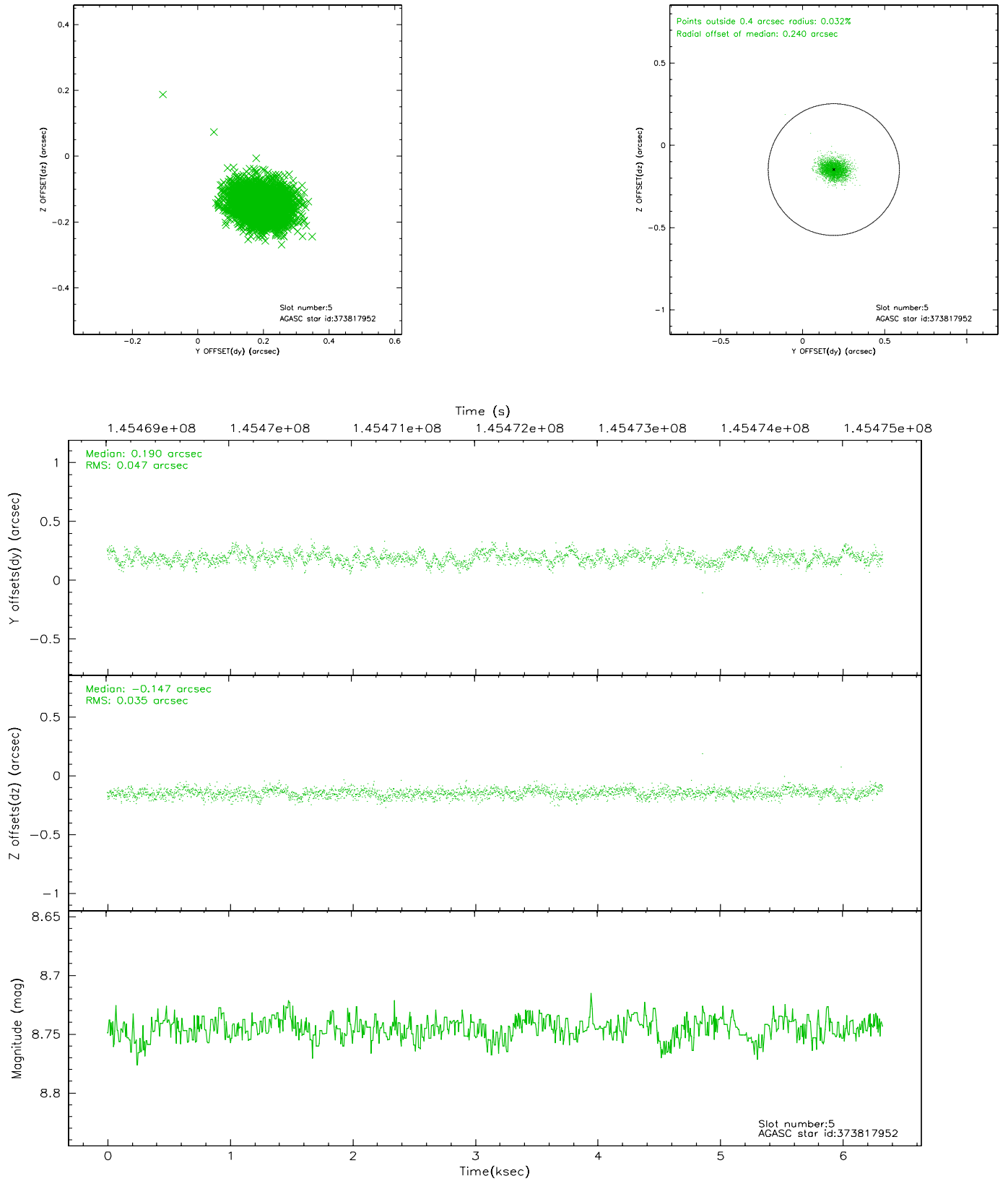
### 2.4.1 Slot 3



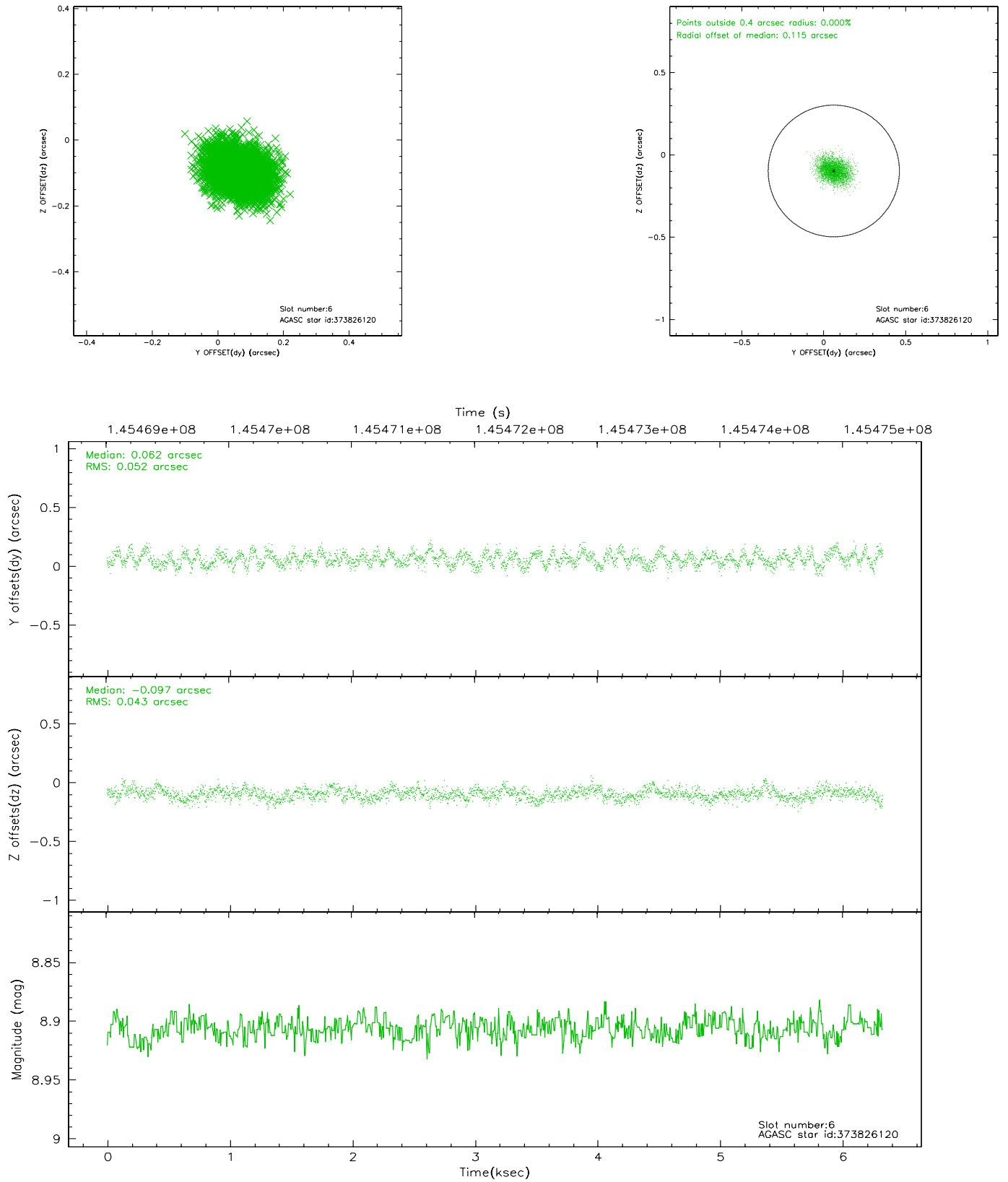
## 2.4.2 Slot 4



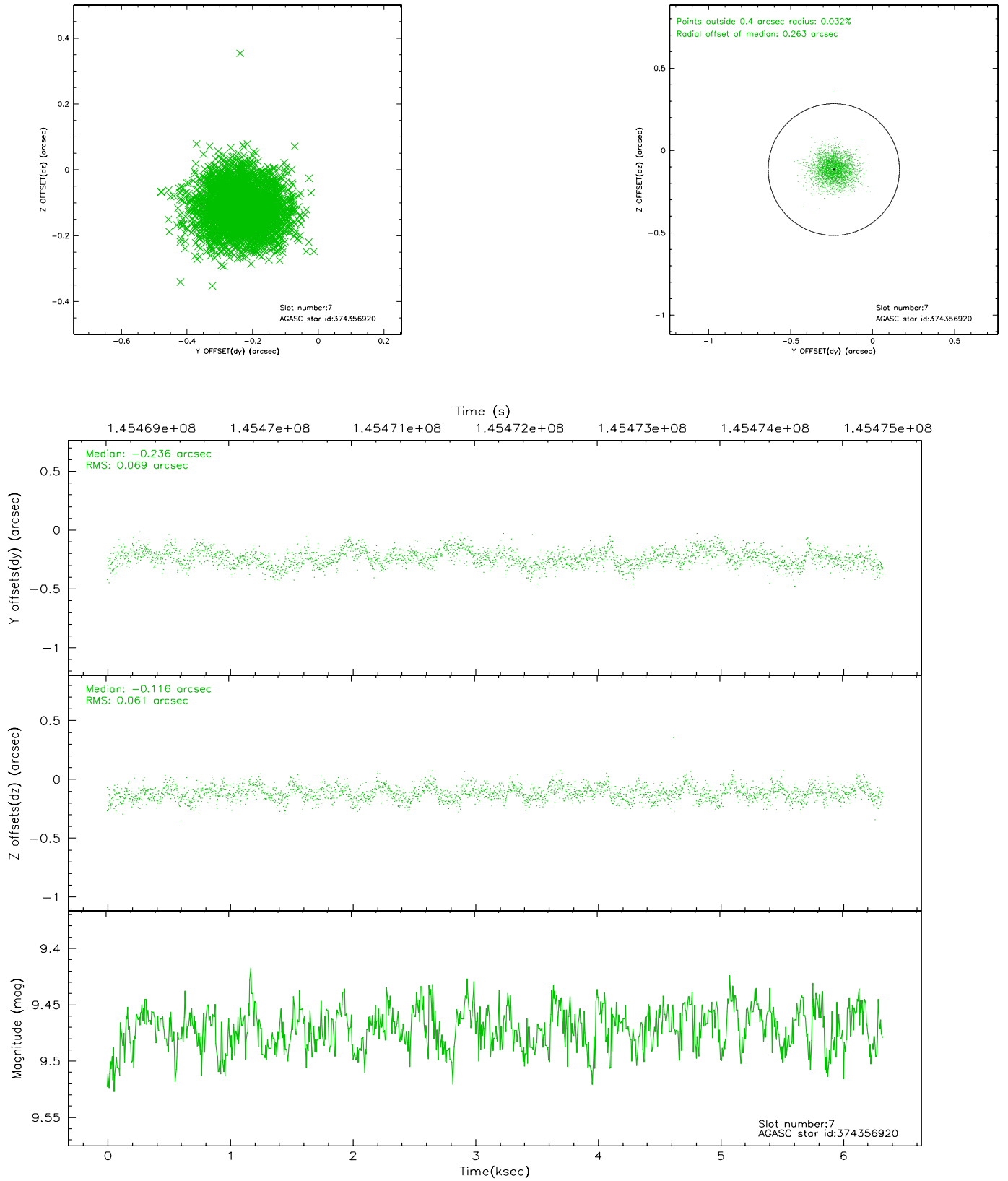
### 2.4.3 Slot 5



## 2.4.4 Slot 6

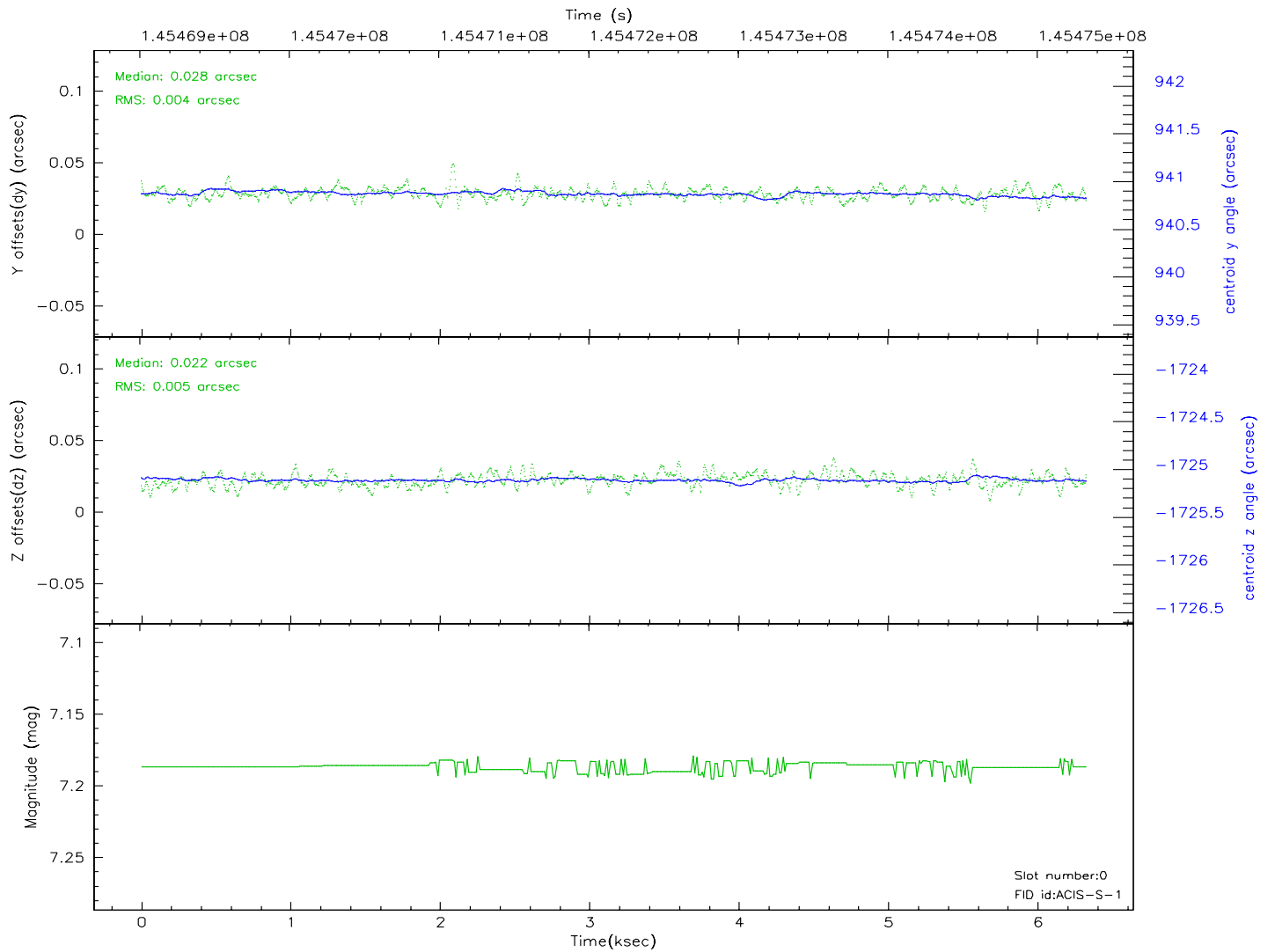
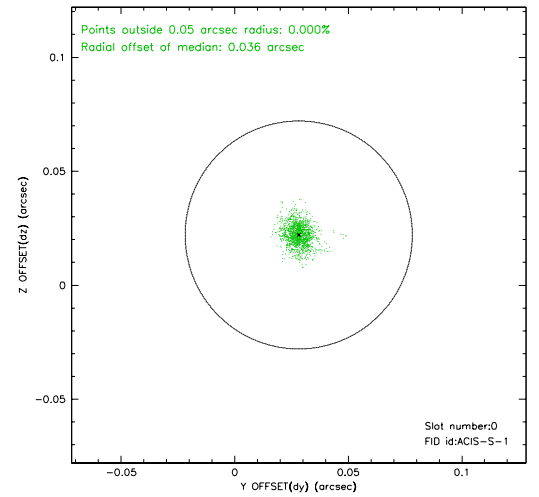
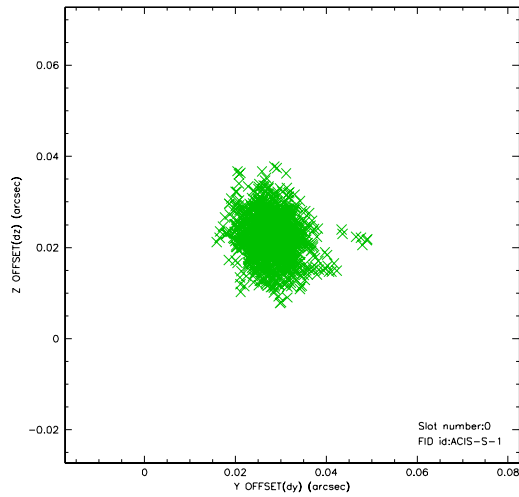


## 2.4.5 Slot 7

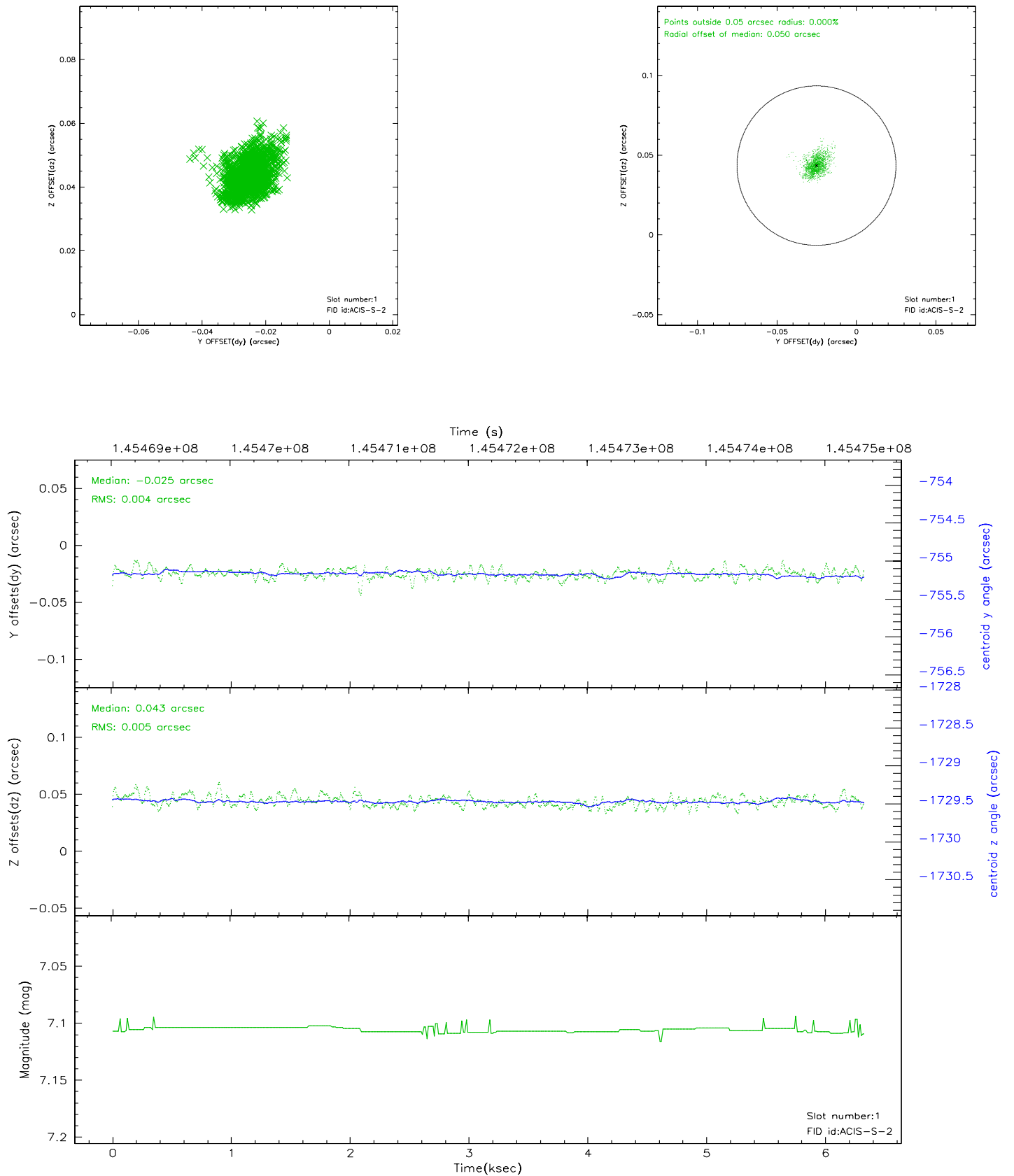


## 2.5 FID Slots

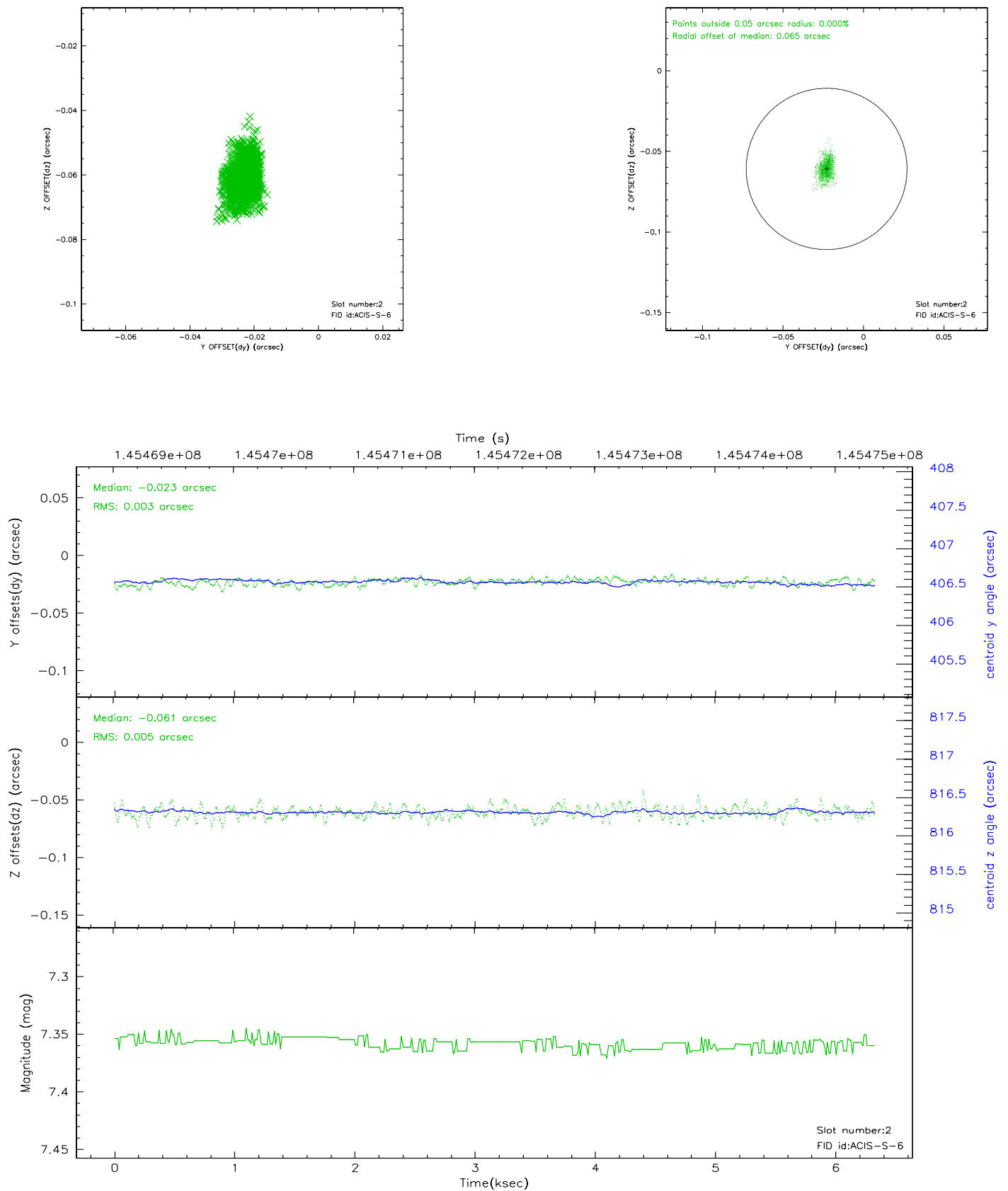
### 2.5.1 Slot 0



## 2.5.2 Slot 1



### 2.5.3 Slot 2





### 3 Point Sources

## A Summary

### A.1 Status

V&V Scientist	Jen Lauer
V&V Date (YYYY-MM-DD)	2006.10.02
V&V Edition	1
V&V Disposition and Status	OK
V&V Charge Time	5.858

### A.2 Comments