

V&V Reference Report

L2 ASCDS Version : 7.6.9

Observation 3284 - L2 Version 001
Chandra X-Ray Center

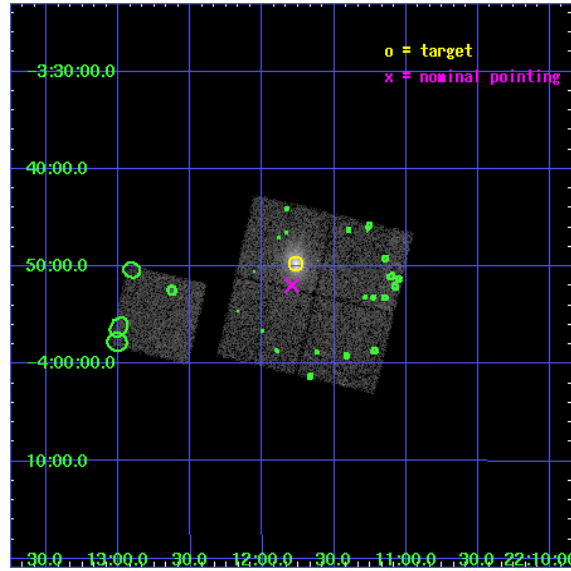
L2 Processing Date : Oct 5 2006

Contents

1	Front	2
2	OBI	3
2.1	OBI	3
2.1.1	Images	3
2.1.2	Bias	3
2.1.3	Parameters	4
2.1.4	Events	4
2.2	Compared Parameters	5
2.3	Aspect	6
2.4	Star Slots	9
2.4.1	Slot 3	9
2.4.2	Slot 4	10
2.4.3	Slot 5	11
2.4.4	Slot 6	12
2.4.5	Slot 7	13
2.5	FID Slots	14
2.5.1	Slot 0	14
2.5.2	Slot 1	15
2.5.3	Slot 2	16
3	Point Sources	17
A	Summary	18
A.1	Status	18
A.2	Comments	18

1 Front

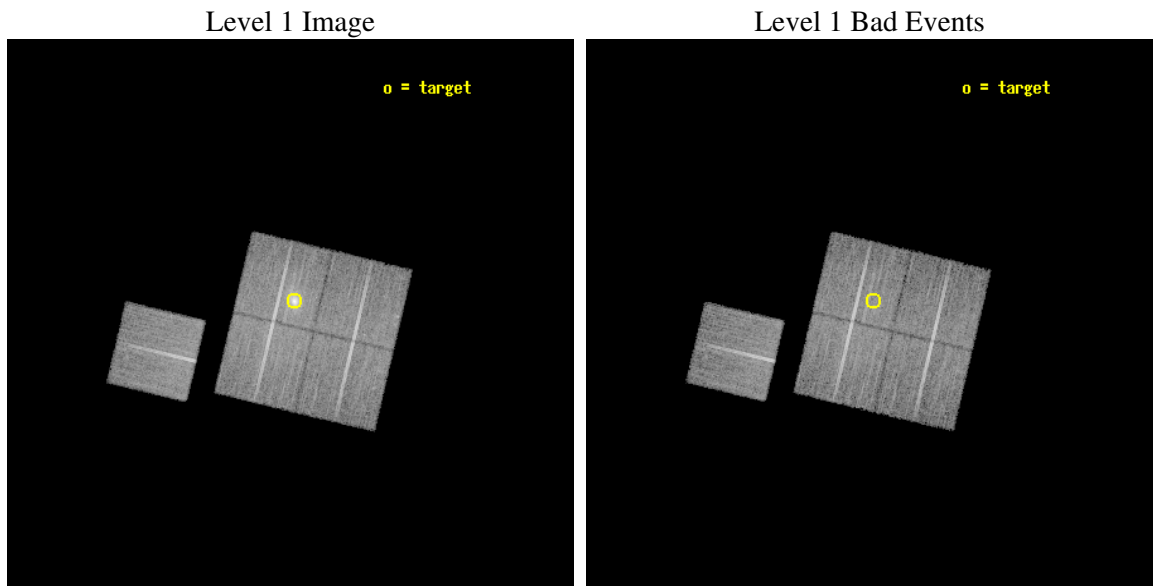
seq_num	800284
obs_id	3284
title	MACS: THE X-RAY PROPERTIES OF THE MOST MASSIVE GALAXY CLUSTERS AT $Z>0.3$
observer	Dr Harald Ebeling
object	MACSJ2211.7-0349
dtcycle	0
cycle	P
ra_targ	332.941667
dec_targ	-3.829167
ra_nom	332.94853464181
dec_nom	-3.866167502352
roll_nom	283.43805226572
revision	2
ontime	17970.699965447
livetime	17735.899540562
ontime0	17967.558965296
ontime1	17967.558995217
ontime2	17970.699965447
ontime3	17970.699965447
ontime6	17967.559005111
l2events	55620



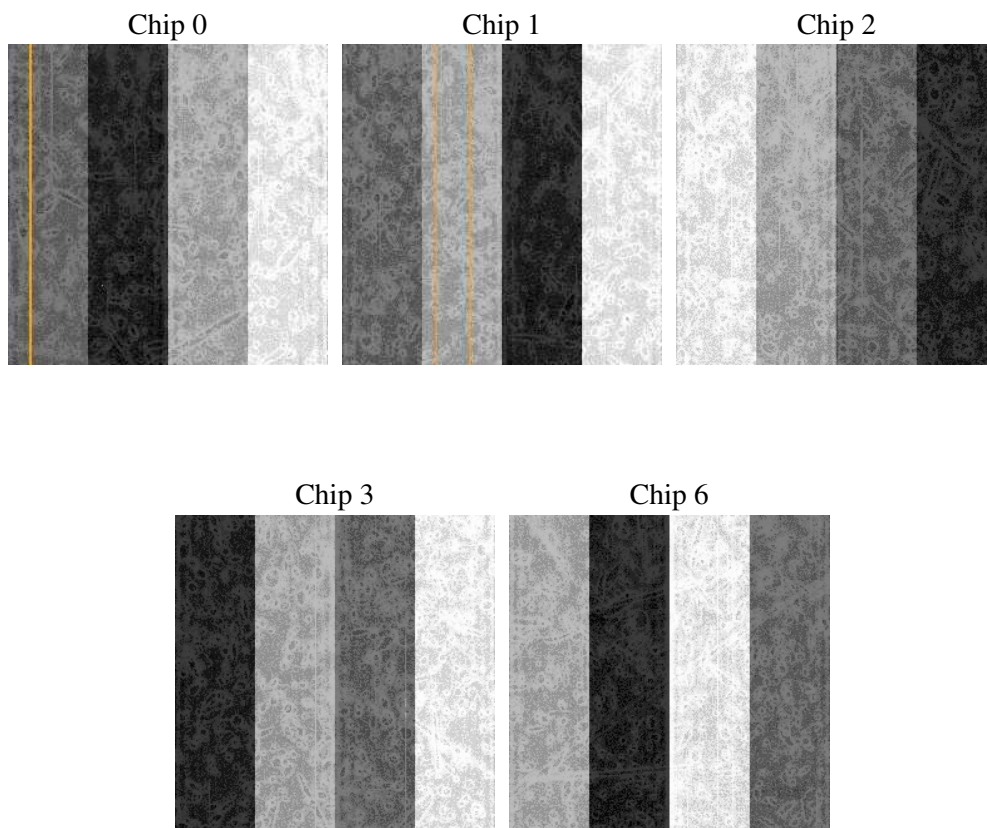
2 OBI

2.1 OBI

2.1.1 Images



2.1.2 Bias



2.1.3 Parameters

obi_num	0
ascdsver	7.6.9
caldbver	3.2.3
date	2006-10-05T23:53:03
revision	2

sched_exp_time	18200.000000
ontime	17975.991714686
ontime0	17972.850714535
ontime1	17972.850744456
ontime2	17975.991714686
ontime3	17975.991714686
ontime6	17972.85075435
l1events	503582

2.1.4 Events

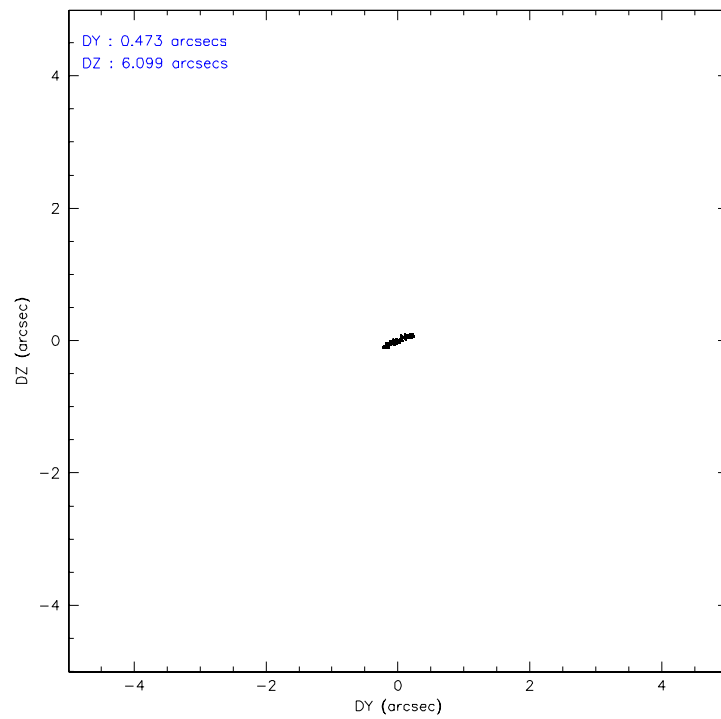
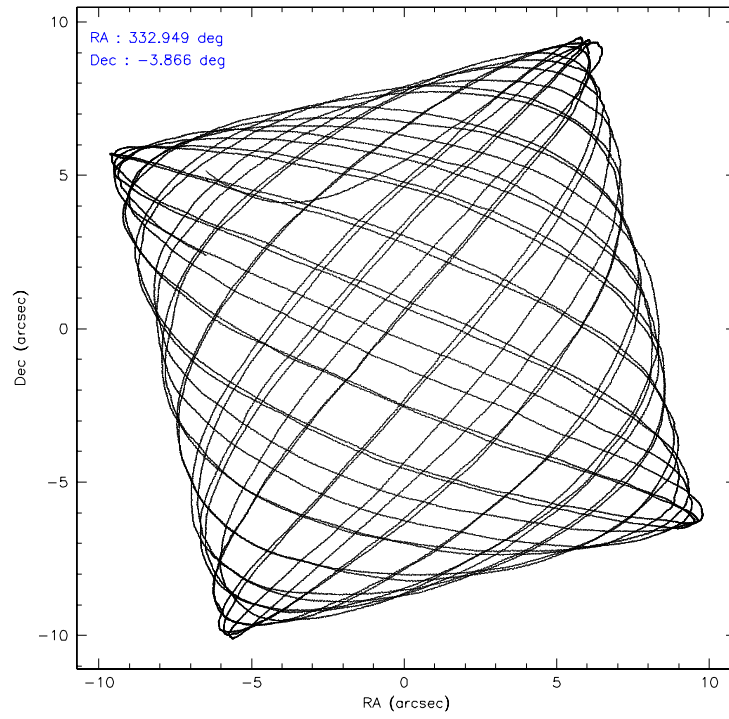
	ccd 0	ccd 1	ccd 2	ccd 3	ccd 6
level 1 events	91369	91979	105611	113732	100891
rejected events	81675	80650	95765	90363	90908
rejected %	89%	87%	90%	79%	90%

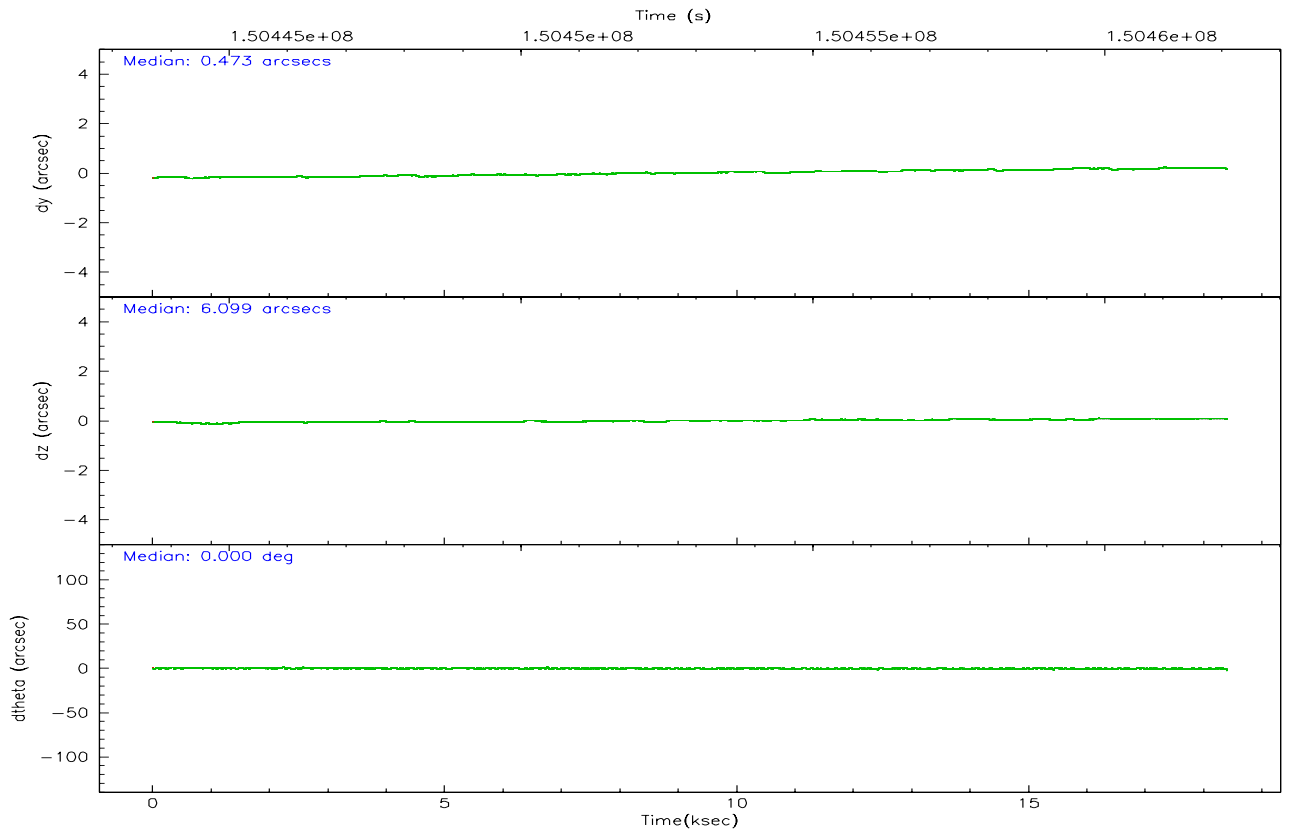
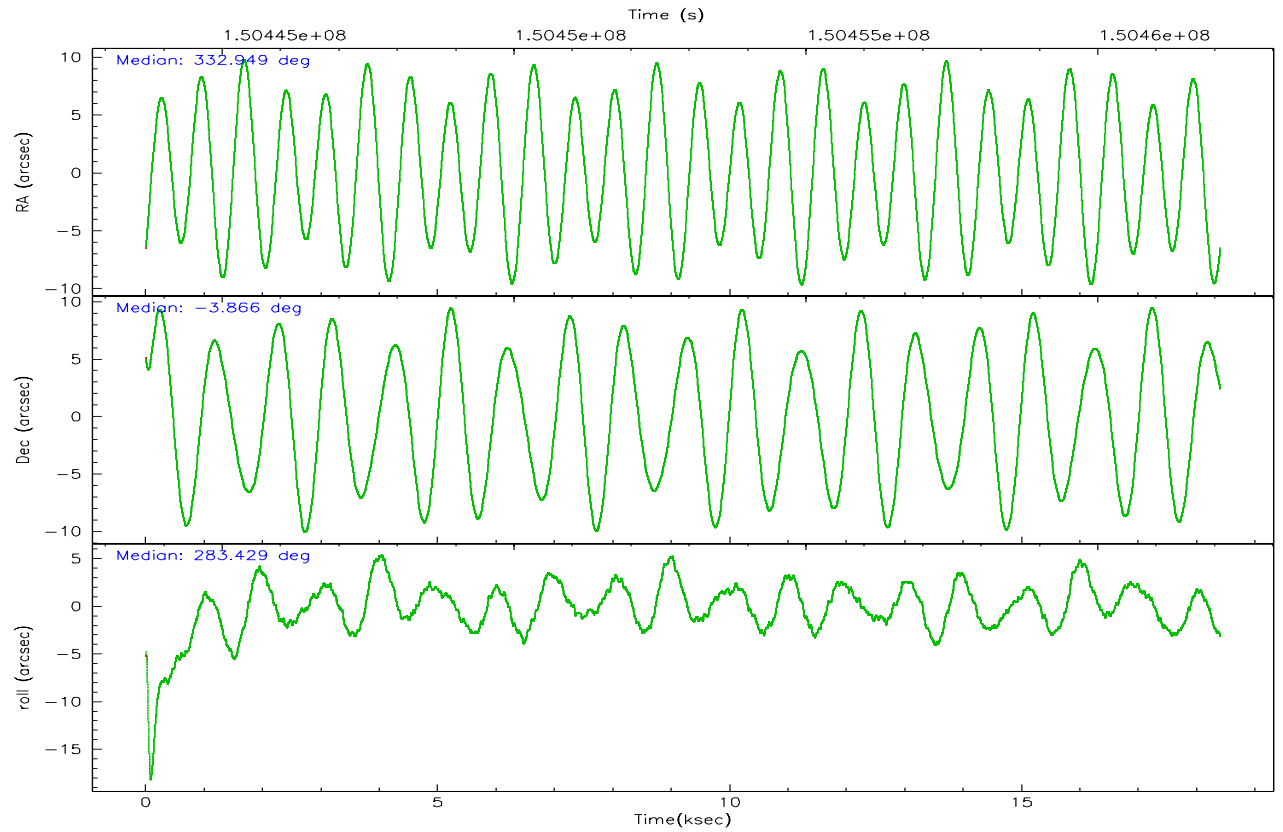
	ccd 0	ccd 1	ccd 2	ccd 3	ccd 6
grade 0 events	3417	4495	3683	14911	3562
	3%	4%	3%	13%	3%
grade 1 events	41	46	51	98	54
	0%	0%	0%	0%	0%
grade 2 events	2168	2288	2215	3319	2047
	2%	2%	2%	2%	2%
grade 3 events	1207	1225	1082	1536	1155
	1%	1%	1%	1%	1%
grade 4 events	1060	1223	1120	1449	1138
	1%	1%	1%	1%	1%
grade 5 events	3304	3560	3055	3737	3750
	3%	3%	2%	3%	3%
grade 6 events	1845	2100	1751	2161	2081
	2%	2%	1%	1%	2%
grade 7 events	78327	77042	92654	86521	87104
	85%	83%	87%	76%	86%

2.2 Compared Parameters

Parameter	Planned	Actual	Parameter	Planned	Actual
Instrument	ACIS	ACIS	Obspar format version number	6	6
Detector	ACIS-01236	ACIS-01236	Obspar file type	PREDICTED	ACTUAL
Grating	NONE	NONE	Obspar update status	NONE	UPDATED
Data mode	VFAINT	VFAINT	Number of optional ACIS chips dropped	0	0
Observation mode	POINTING	POINTING	On-chip summing requested	N	N
Pointing RA	332.929585	332.9485346418136	Subarray requested	NONE	NONE
Pointing Dec	-3.846381	-3.866167502351981	Alternating exposures requested	N	N
Pointing Roll	283.228077	283.4380522657188	Primary exposure time	0.000000	3.1
SIM focus pos (mm)	-0.782348	-0.7809083437167272			
SIM defocus (mm)	0	0.001439871863259334			
SIM translation stage pos (mm)	-227.742463	-227.734108438797			
SIM translation stage offset (mm)	-5.85	-5.858344564132665			
Observation start time	150443899.184000	150443069.52491			
Observation start date	2002-10-08T05:57:15	2002-10-08T05:44:29			
Observation end time	150462099.184000	150462840.23823			
Observation end date	2002-10-08T11:00:35	2002-10-08T11:14:00			
Read mode	TIMED	TIMED			

2.3 Aspect



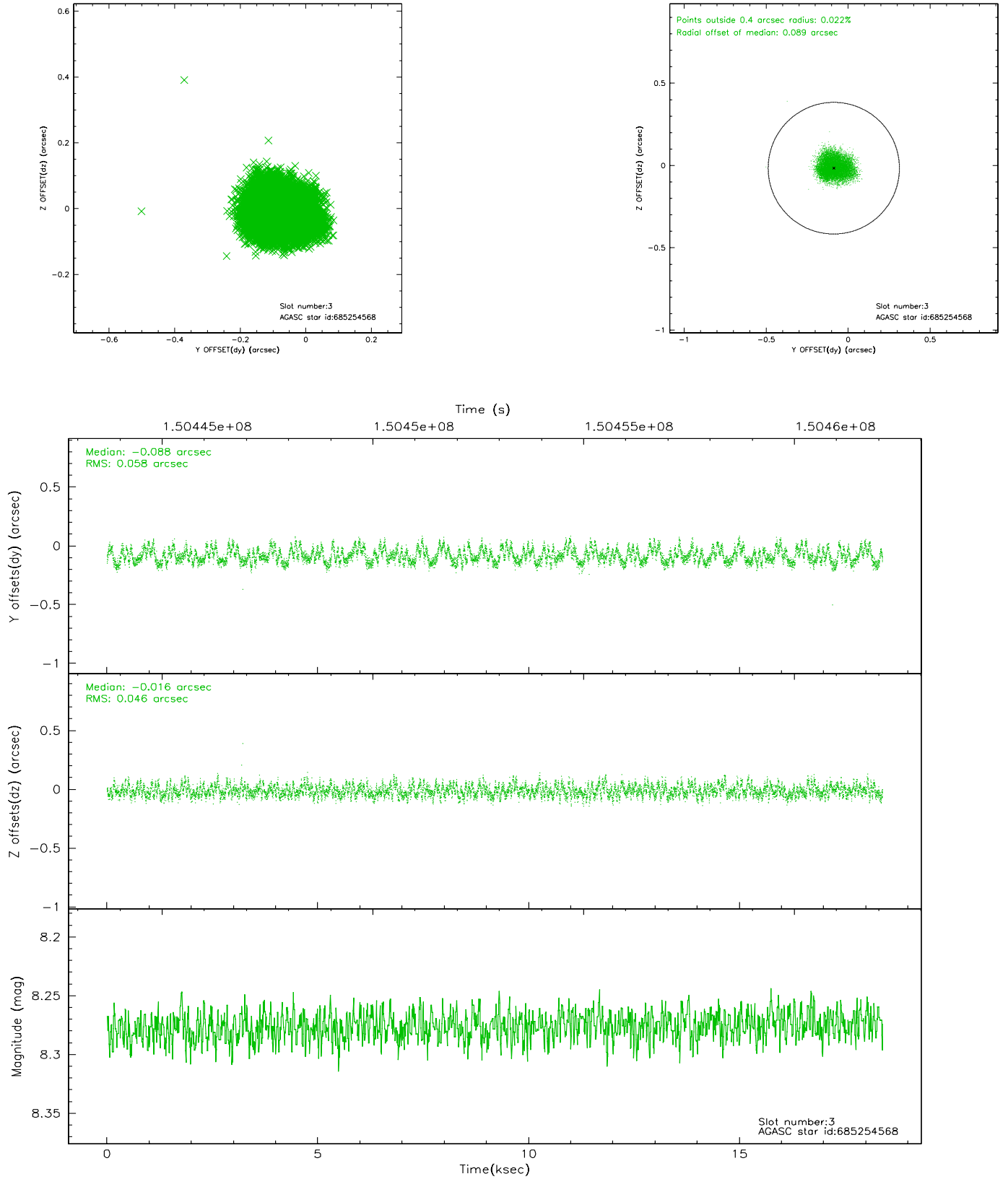


Slot Statistics

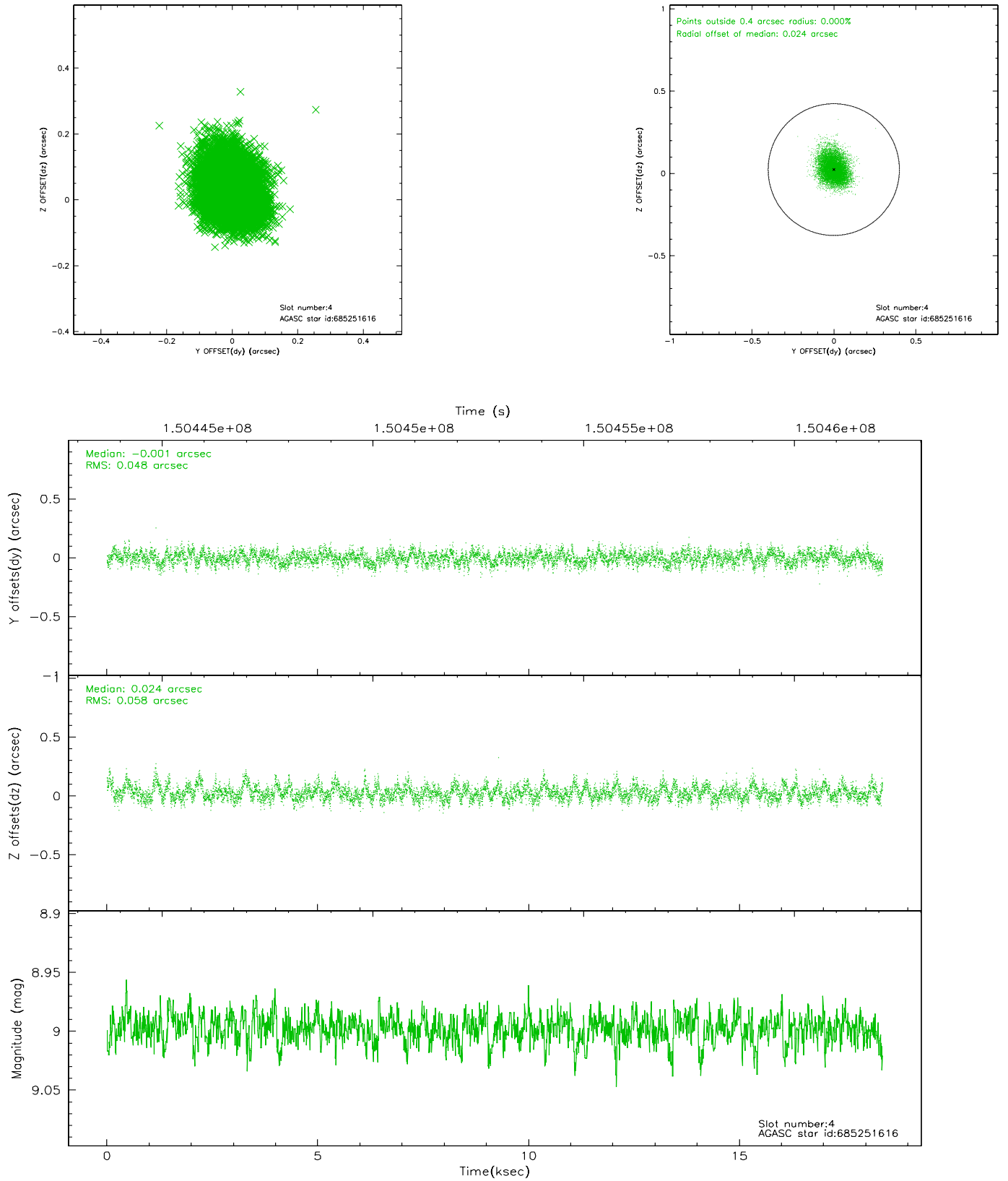
slot	status	id	mag	n_pts	med_dy	med_dz	dr1	dr2	ra	dec	mean_y	mean_z
0	FID	ACIS-I-1	7.25	4488	0.062	0.005	0.006	0.010	0.000000	0.000000	939.29	-949.74
1	FID	ACIS-I-5	7.23	4488	-0.161	0.088	0.006	0.010	0.000000	0.000000	-1808.84	947.80
2	FID	ACIS-I-6	7.26	4487	0.008	-0.022	0.007	0.011	0.000000	0.000000	404.65	1592.36
3	GUIDE	685254568	8.28	8972	-0.088	-0.016	0.081	0.122	333.425929	-3.775790	161.36	1793.62
4	GUIDE	685251616	9.00	8970	-0.001	0.024	0.080	0.130	333.300751	-3.872390	396.82	1276.49
5	GUIDE	685115272	8.99	8973	0.046	-0.128	0.077	0.127	332.494320	-4.136594	660.76	-1760.66
6	GUIDE	685254192	9.05	8970	0.027	0.009	0.076	0.122	332.719594	-3.749941	-509.83	-655.19
7	GUIDE	685247552	9.43	8964	0.005	0.109	0.127	0.185	332.591248	-3.433875	-1723.05	-844.18

2.4 Star Slots

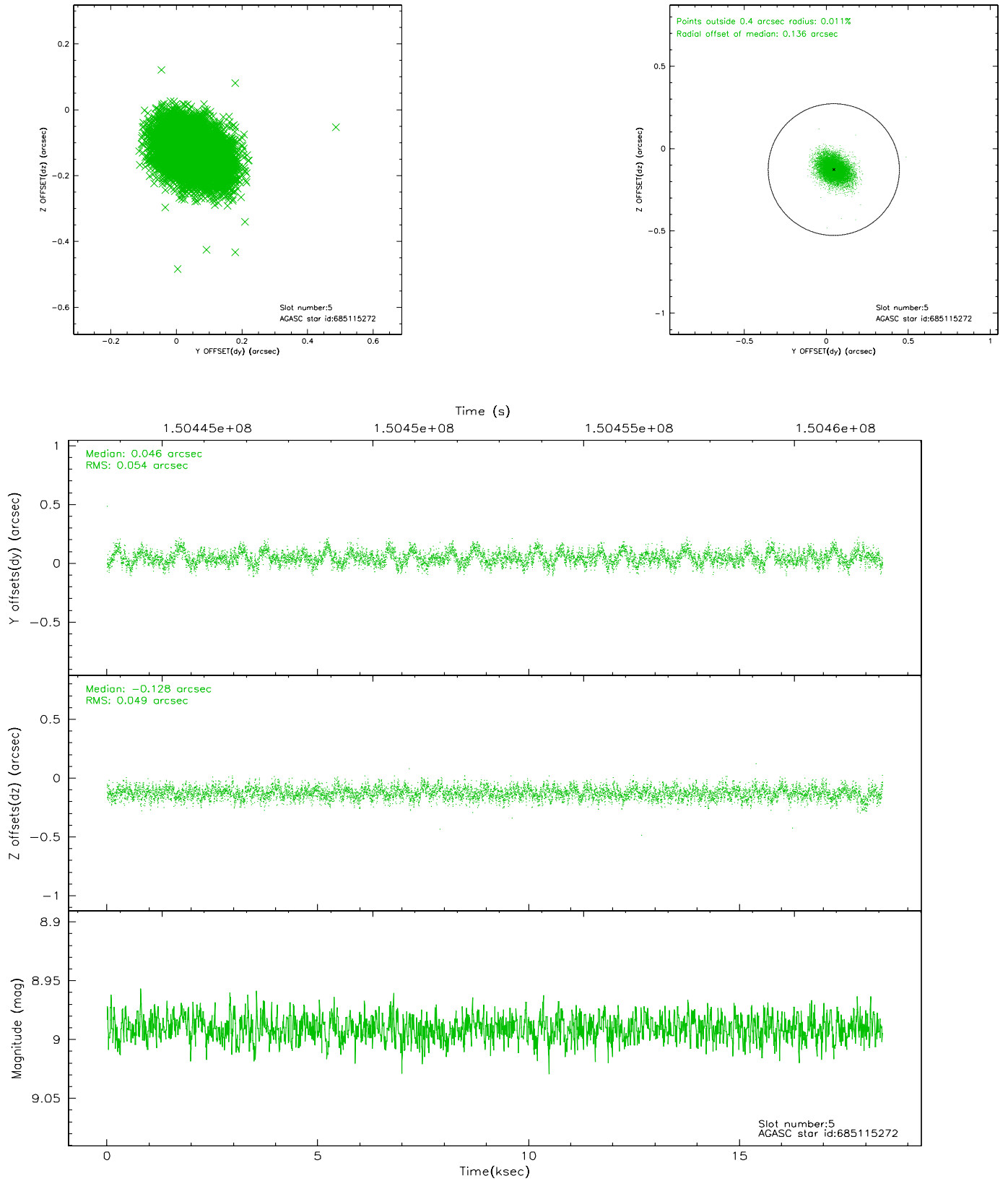
2.4.1 Slot 3



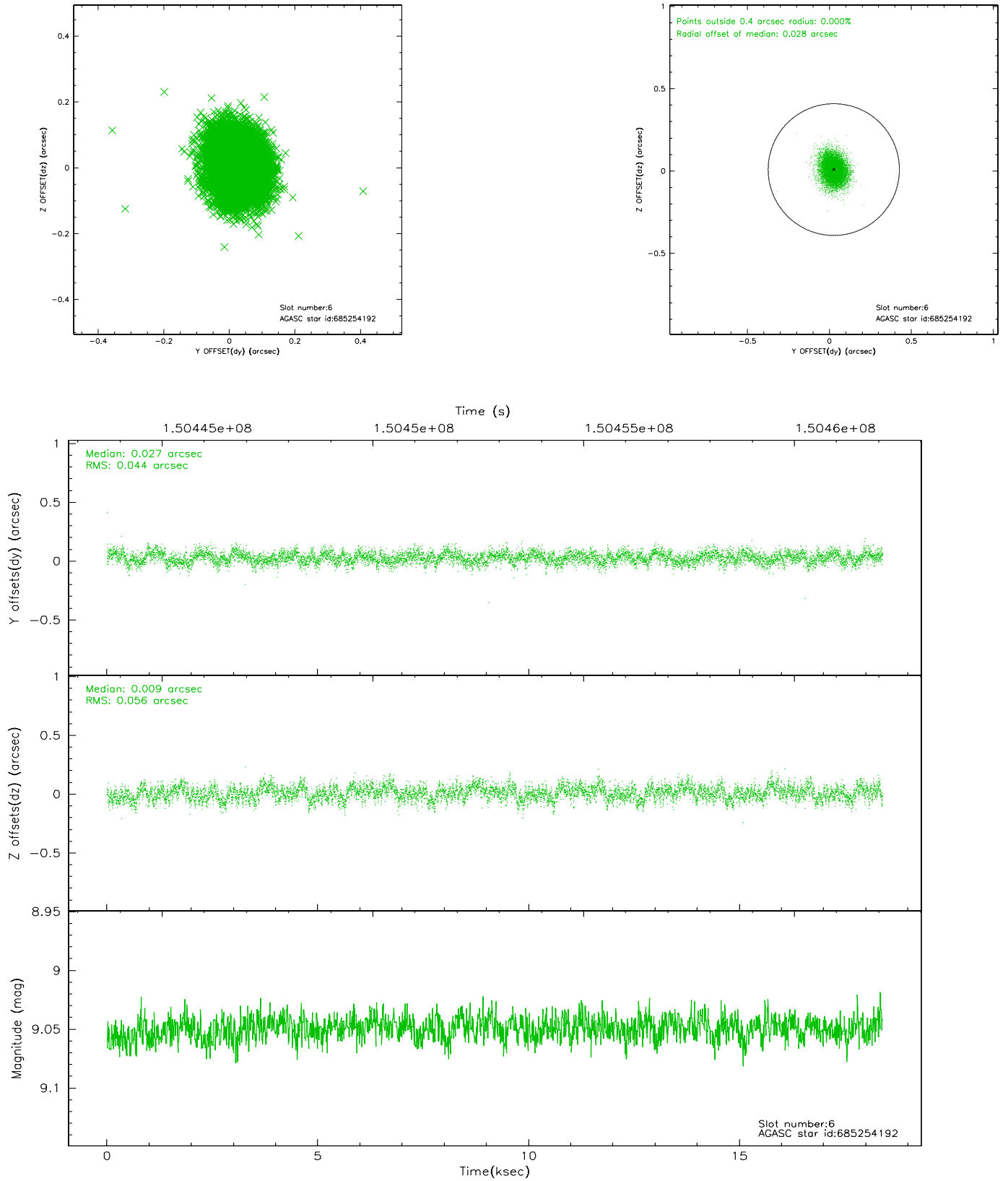
2.4.2 Slot 4



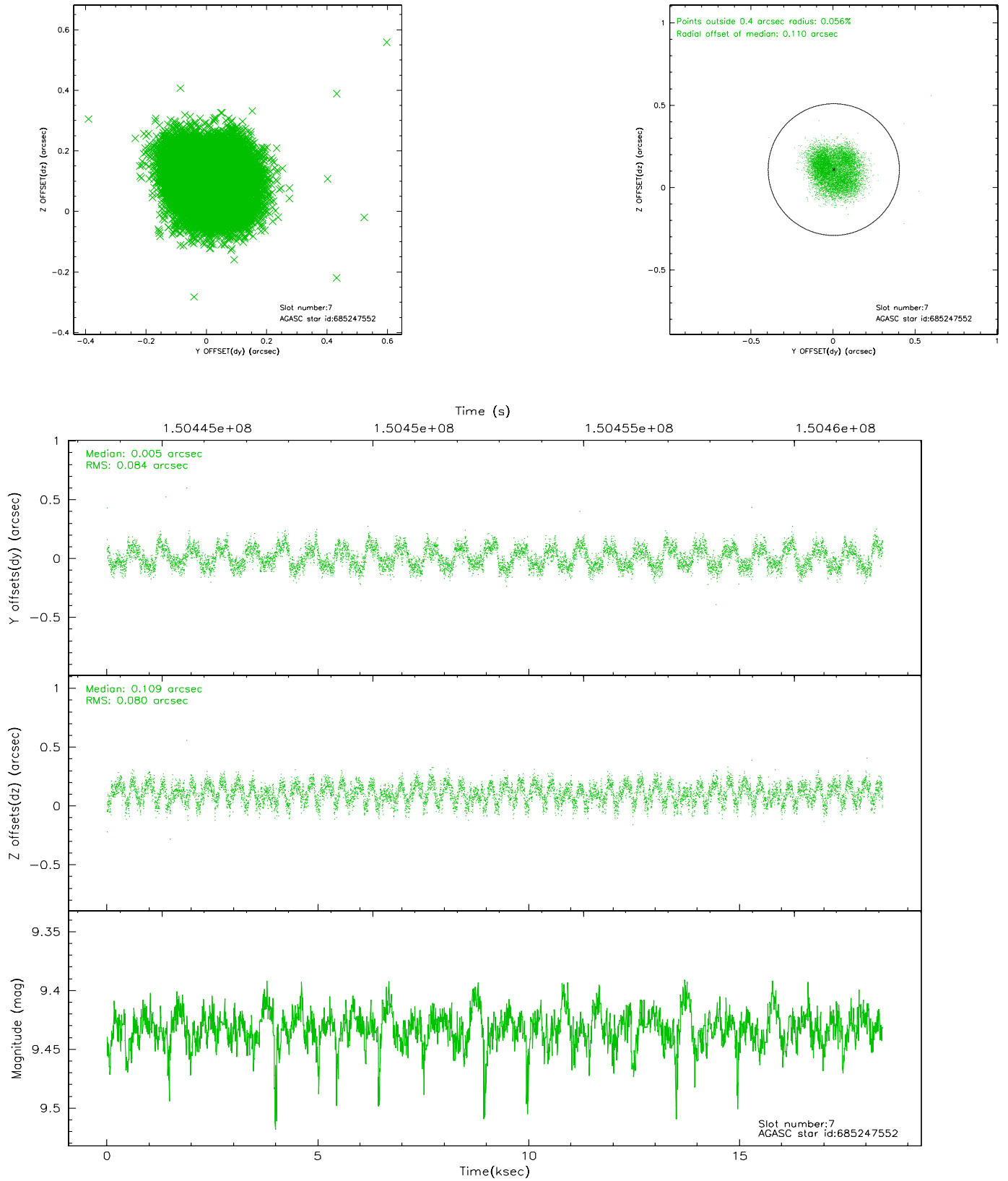
2.4.3 Slot 5



2.4.4 Slot 6

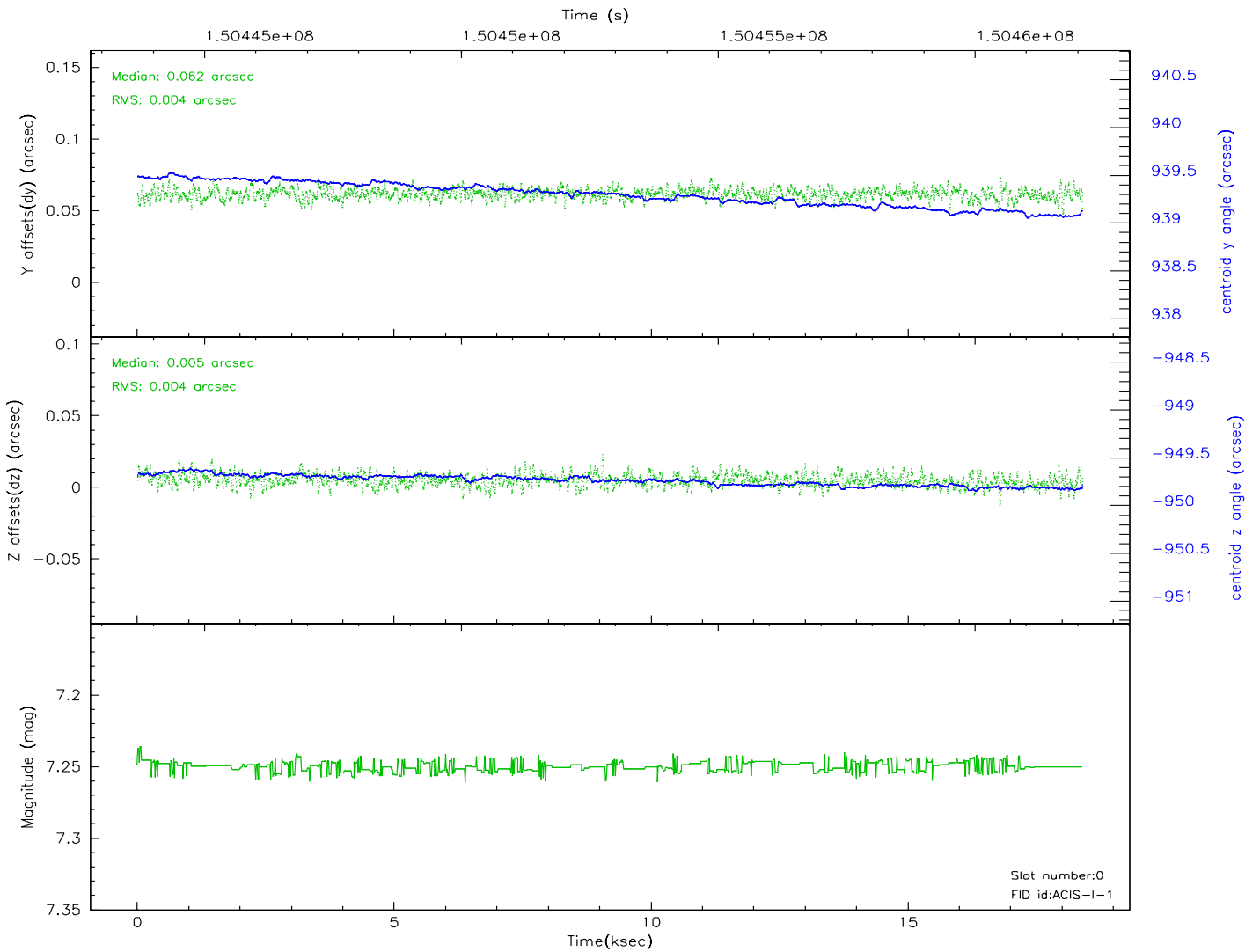
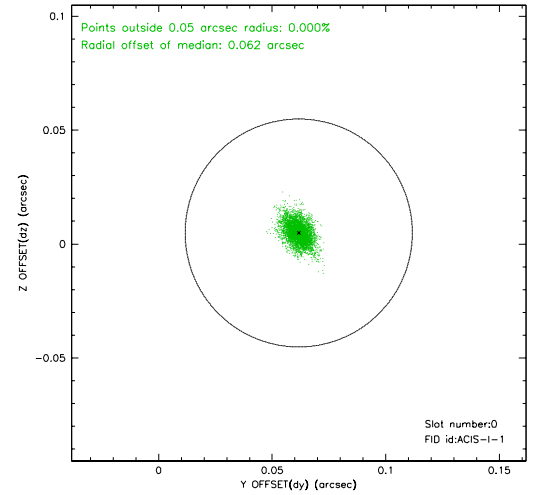
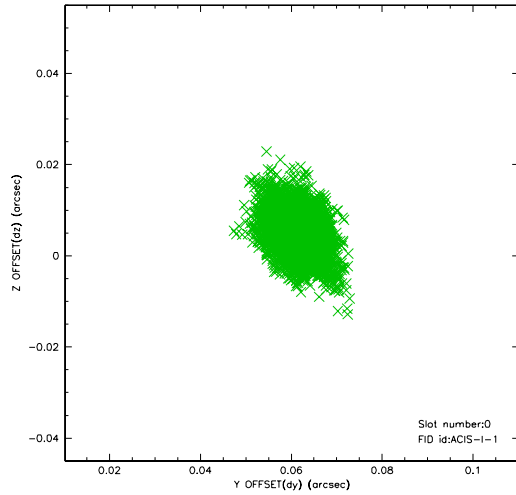


2.4.5 Slot 7

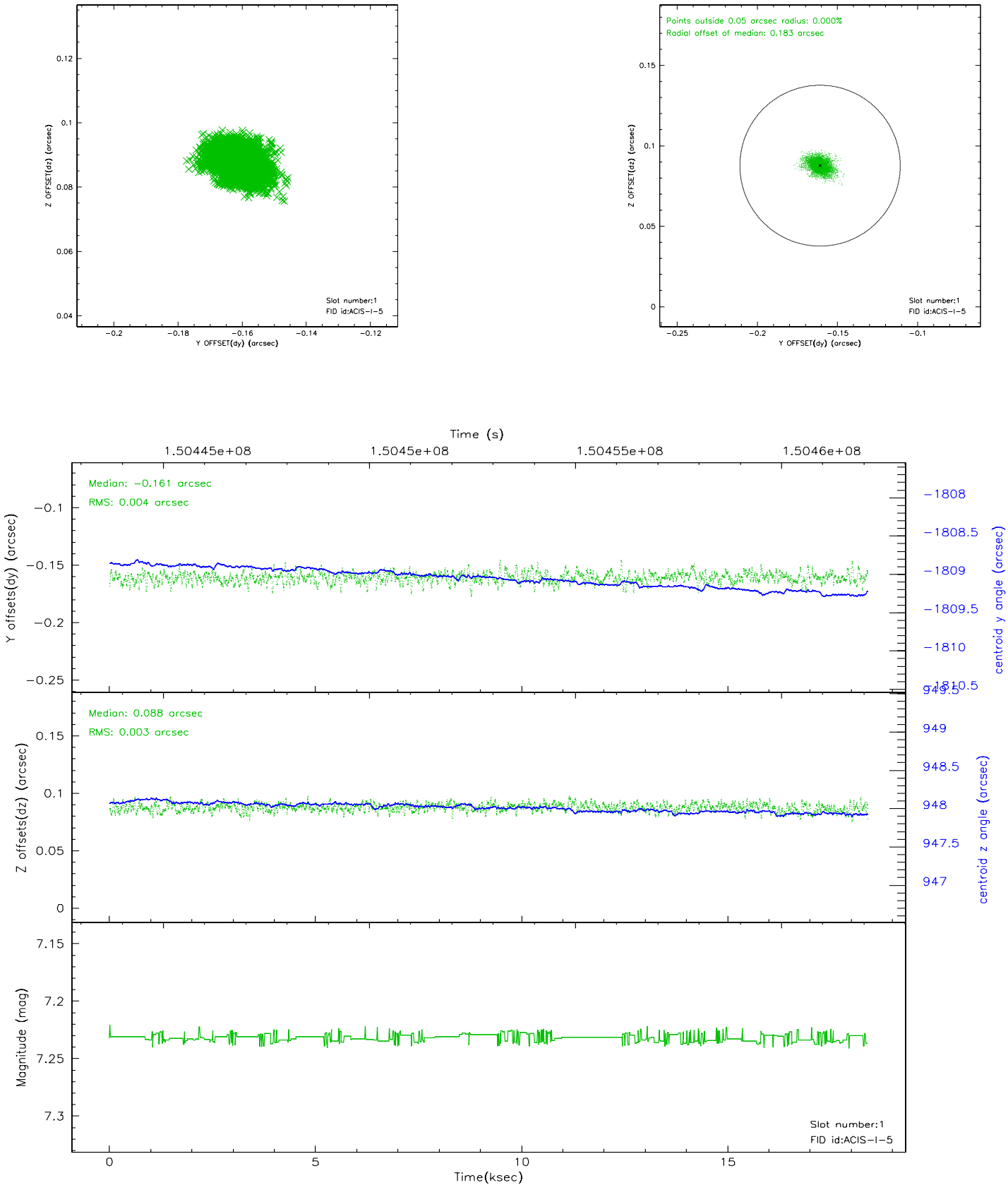


2.5 FID Slots

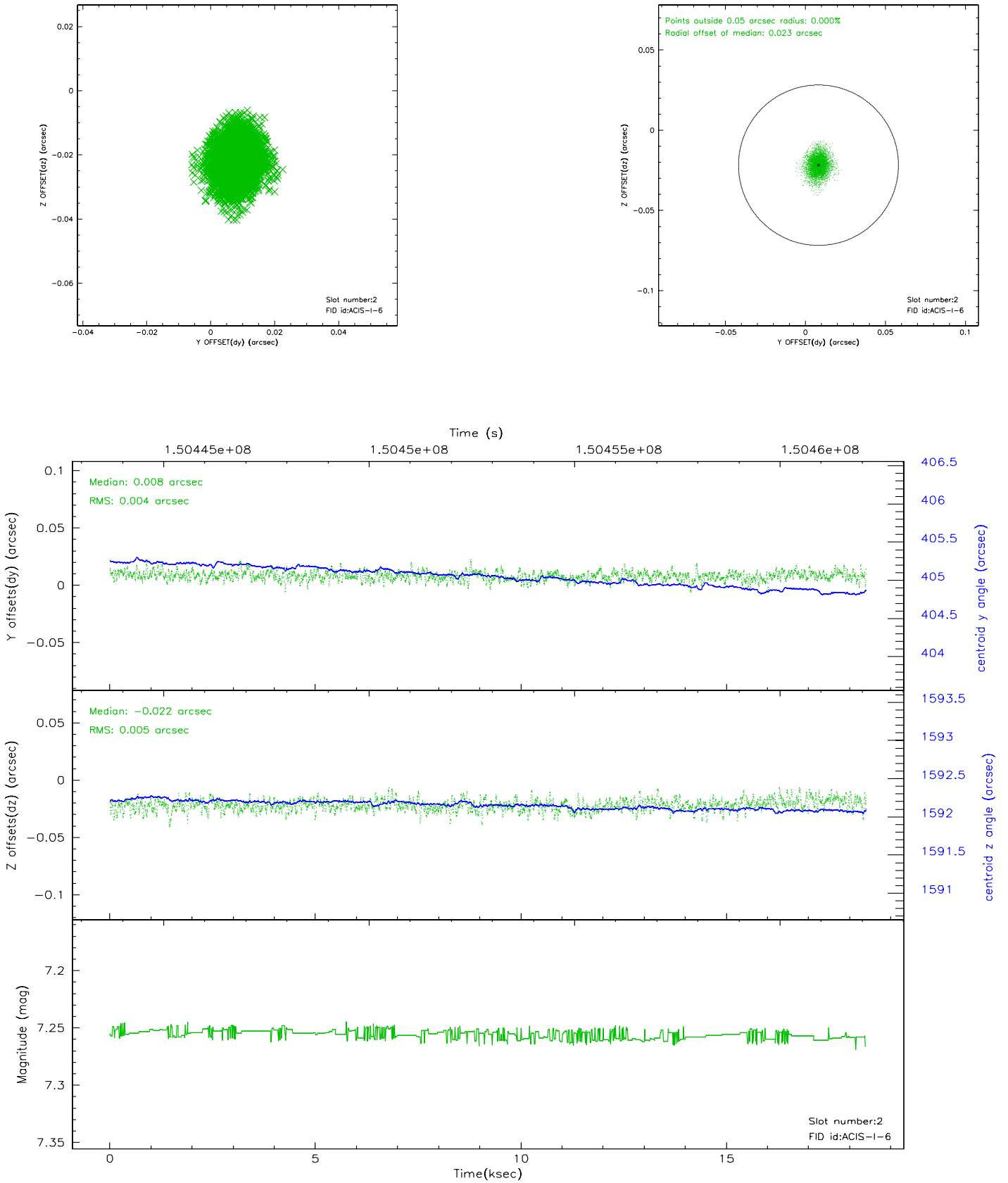
2.5.1 Slot 0



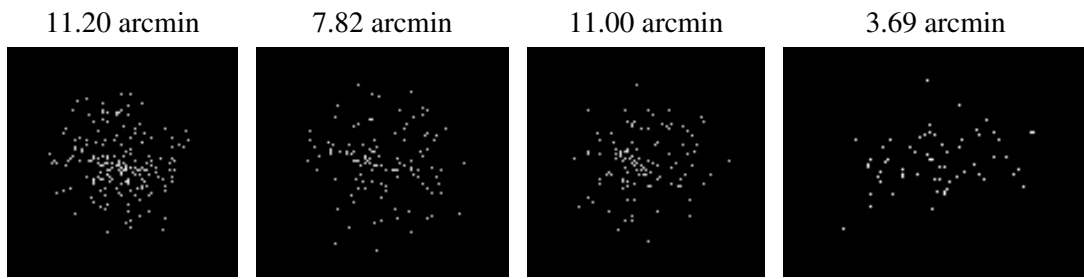
2.5.2 Slot 1



2.5.3 Slot 2



3 Point Sources



A Summary

A.1 Status

V&V Scientist	Beth Sundheim
V&V Date (YYYY-MM-DD)	2006.10.06
V&V Edition	1
V&V Disposition and Status	OK
V&V Charge Time	17.973

A.2 Comments