

V&V Reference Report

L2 ASCDS Version : 8.4.5

Observation 3252 - L2 Version 4
Chandra X-Ray Center

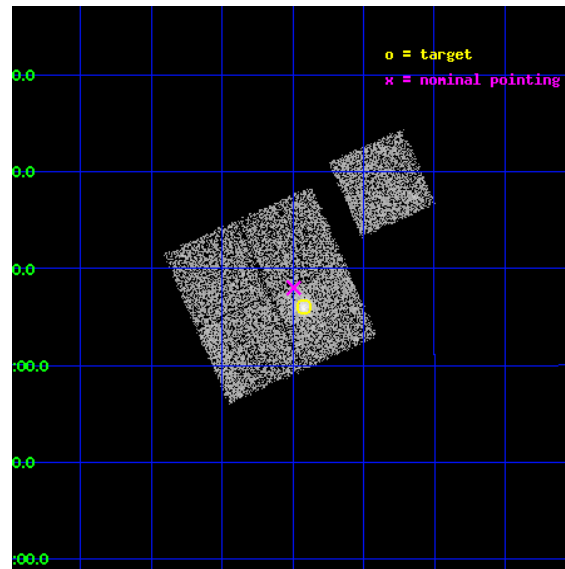
L2 Processing Date : Oct 17 2012

Contents

1	Front	2
2	OBI	3
2.1	OBI	3
2.1.1	Images	3
2.1.2	Bias	3
2.1.3	Parameters	4
2.1.4	Events	4
2.2	Compared Parameters	5
2.3	Aspect	6
2.4	Star Slots	9
2.4.1	Slot 3	9
2.4.2	Slot 4	10
2.4.3	Slot 5	11
2.4.4	Slot 6	12
2.4.5	Slot 7	13
2.5	FID Slots	14
2.5.1	Slot 0	14
2.5.2	Slot 1	15
2.5.3	Slot 2	16
A	Summary	17
A.1	Status	17
A.2	Comments	17

1 Front

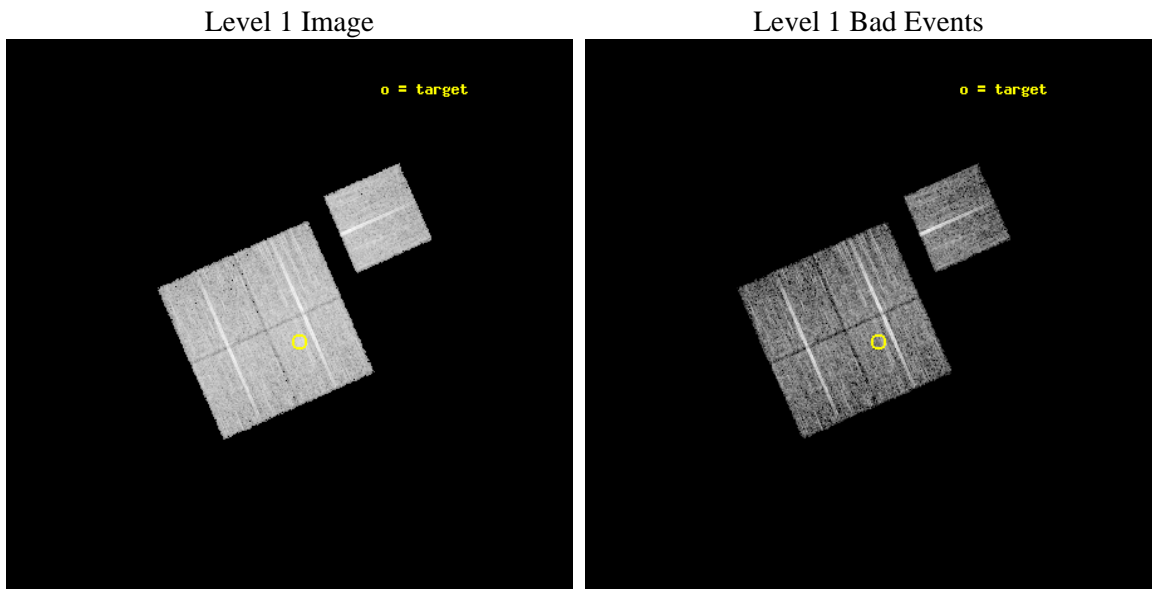
seq_num	800252	Sequence number
obs_id	3252	Observation id
title	OBSERVATION OF MACS CLUSTERS, 0.45	Proposal titl
observer	DR. LEON VANSPEYBROECK	Principal investigator
object	MACS-J1108.8+0906	Source name
dtcycle	0	
cycle	P	events from which exps? Prim/Second/Both
ra_targ	167.230833	Observer's specified target RA [deg]
dec_targ	9.1	Observer's specified target Dec [deg]
ra_nom	167.24803817285	Nominal RA [deg]
dec_nom	9.1335545419678	Nominal Dec [deg]
roll_nom	66.064285414949	Nominal Roll [deg]
revision	4	Processing version of data
ontime	10081.158990443	Sum of GTIs [s]
livetime	9949.4412265913	Livetime [s]
ontime0	10084.299980581	Sum of GTIs [s]
ontime1	10081.159020364	Sum of GTIs [s]
ontime2	10084.299980581	Sum of GTIs [s]
ontime3	10081.158990443	Sum of GTIs [s]
ontime6	10084.299980581	Sum of GTIs [s]
l2events	23920	Number of level 2 events



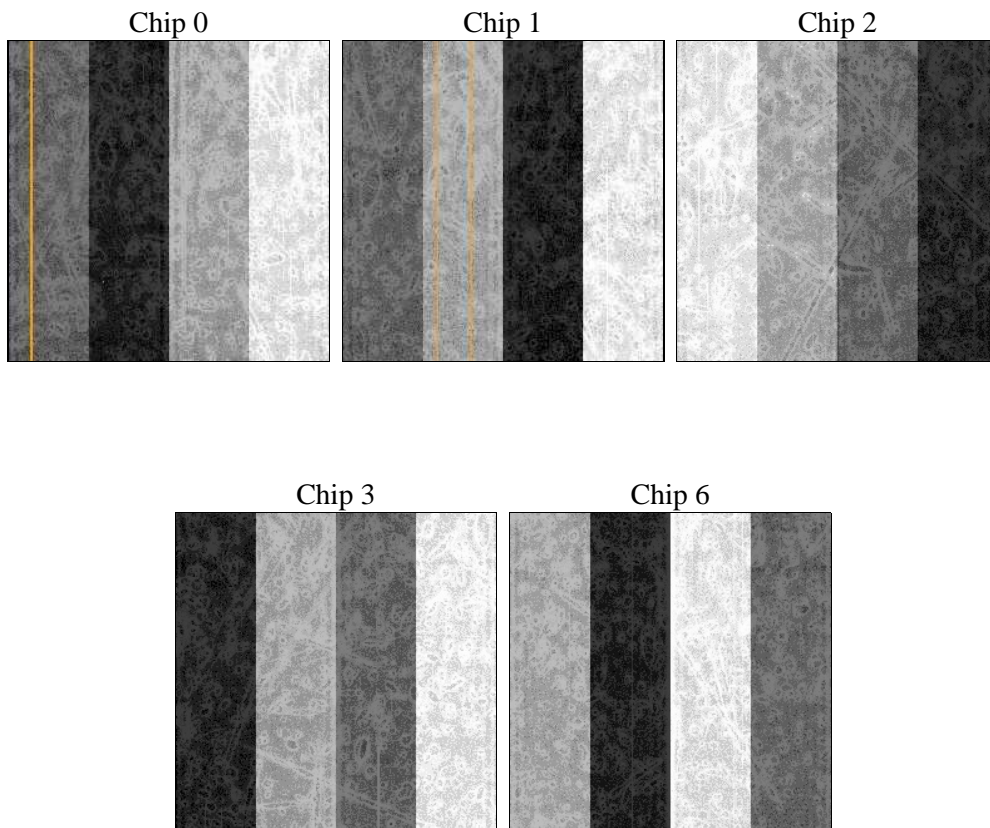
2 OBI

2.1 OBI

2.1.1 Images



2.1.2 Bias



2.1.3 Parameters

obi_num	1	Obi number	sched_exp_time	10000.000000	[s] Scheduled observation exposure time
ascdsver	8.4.5	Processing system revision	ontime	10081.158990443	Sum of GTIs [s]
caldsver	4.5.2	 	ontime0	10084.299980581	Sum of GTIs [s]
date	2012-10-17T12:00:41	Date and time of file creation	ontime1	10081.159020364	Sum of GTIs [s]
revision	4	Processing version of data	ontime2	10084.299980581	Sum of GTIs [s]
			ontime3	10081.158990443	Sum of GTIs [s]
			ontime6	10084.299980581	Sum of GTIs [s]
			l1events	268535	Number of level 1 events

2.1.4 Events

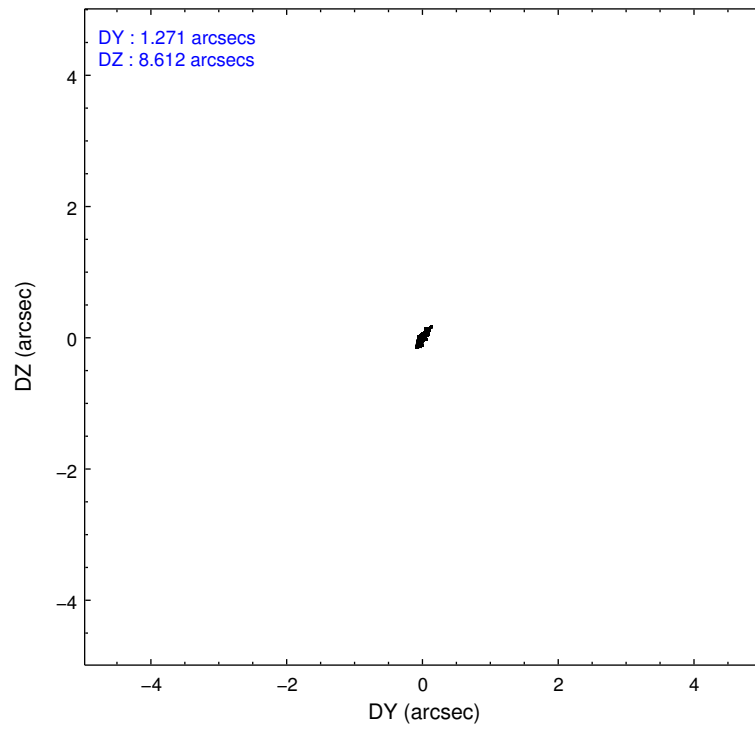
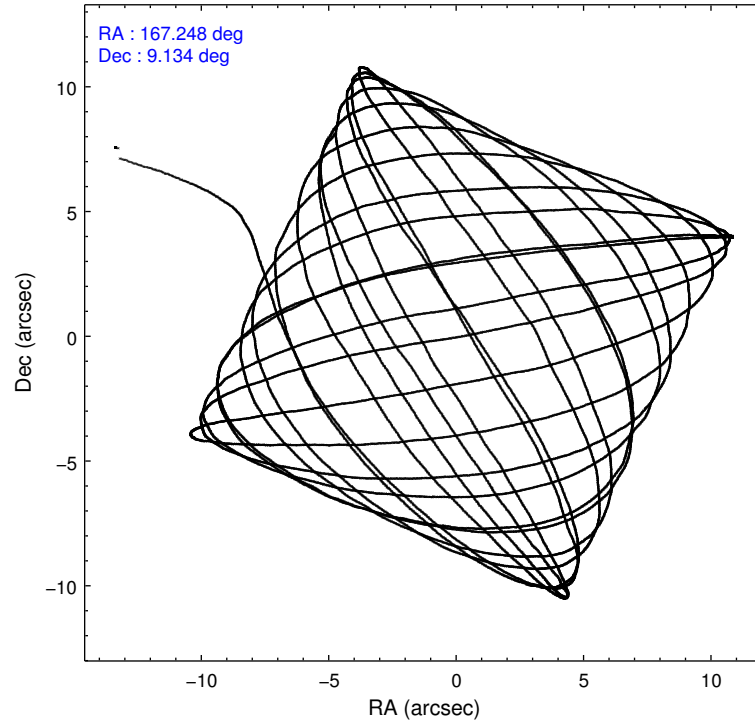
	ccd 0	ccd 1	ccd 2	ccd 3	ccd 6
level 1 events	49734	50261	57967	56858	53715
rejected events	44594	44277	52784	49890	48306
rejected %	89%	88%	91%	87%	89%

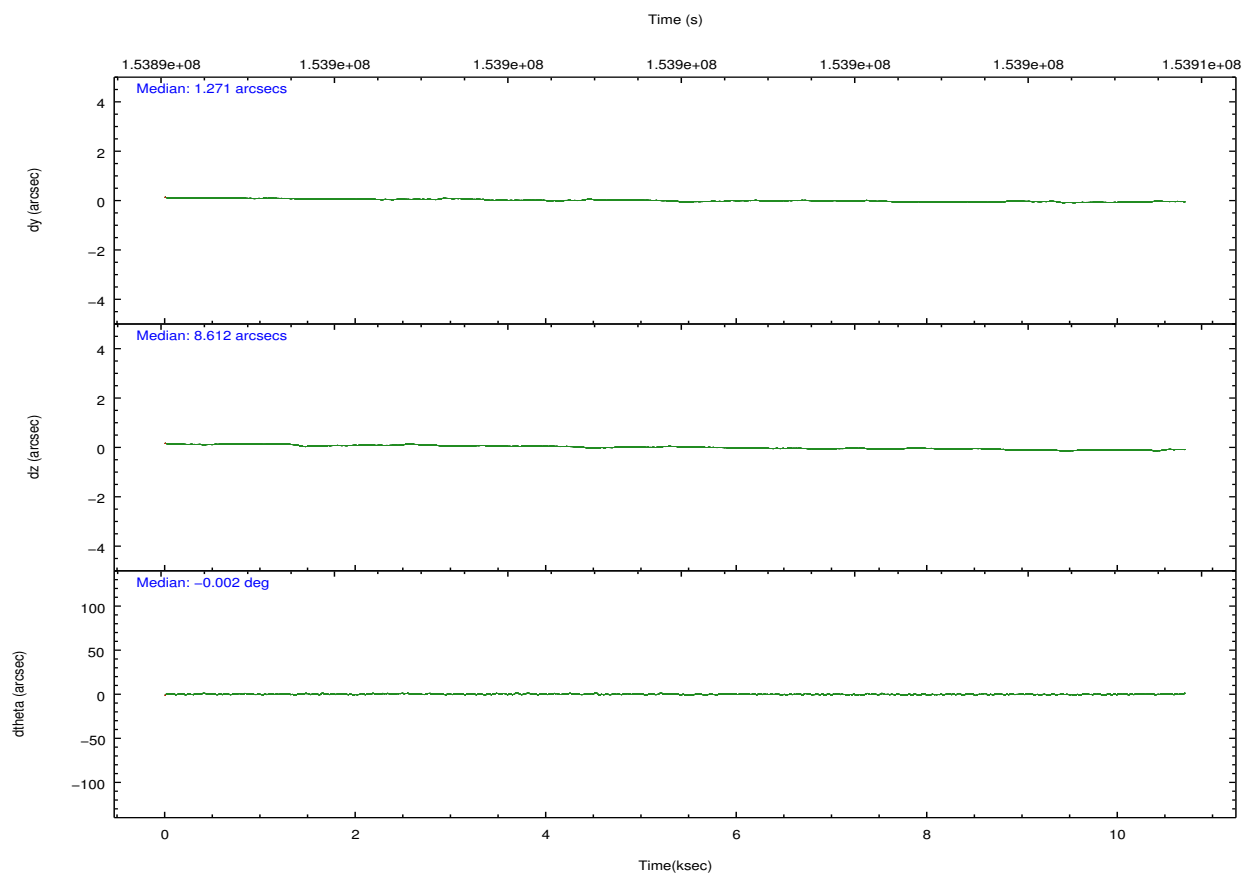
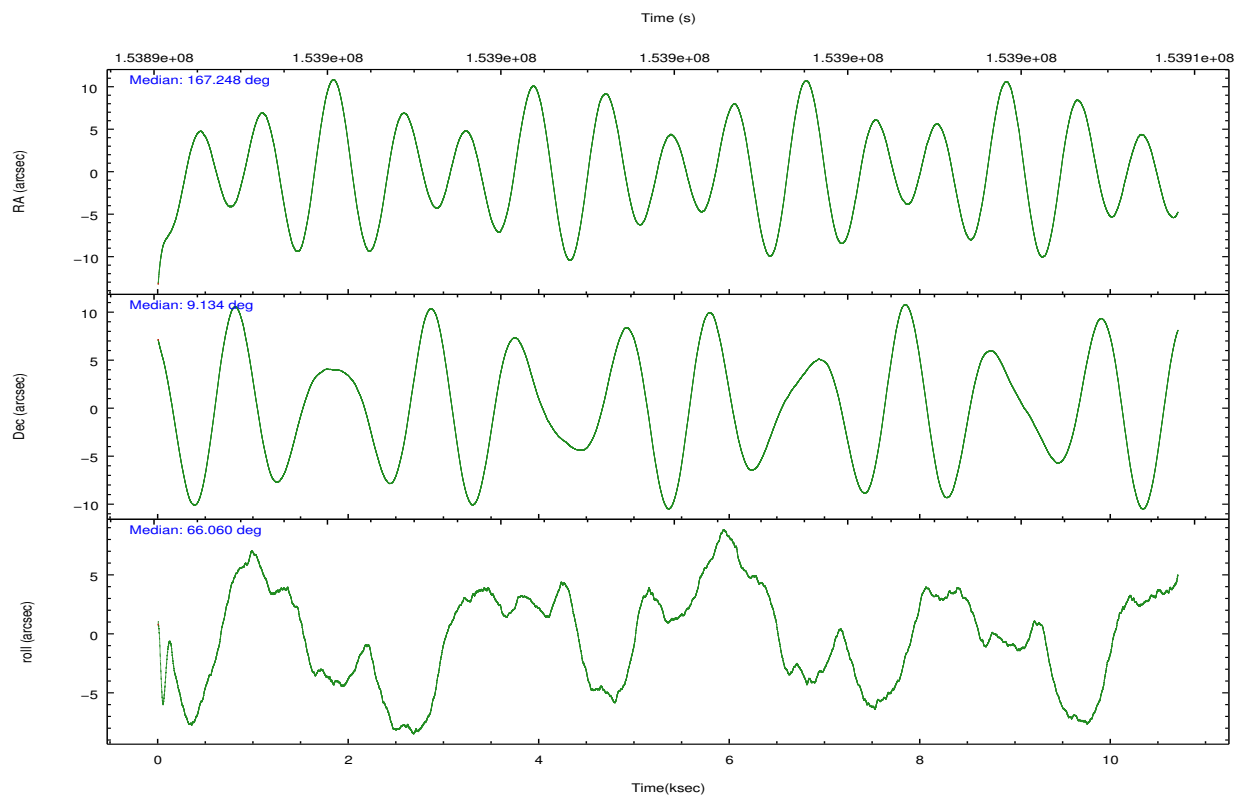
	ccd 0	ccd 1	ccd 2	ccd 3	ccd 6
grade 0 events	1733	2167	1884	3296	1934
	3%	4%	3%	5%	3%
grade 1 events	17	36	24	38	25
	0%	0%	0%	0%	0%
grade 2 events	1211	1225	1148	1283	1112
	2%	2%	1%	2%	2%
grade 3 events	597	728	593	647	634
	1%	1%	1%	1%	1%
grade 4 events	583	700	582	613	593
	1%	1%	1%	1%	1%
grade 5 events	1808	1939	1771	2108	1946
	3%	3%	3%	3%	3%
grade 6 events	1017	1165	976	1129	1137
	2%	2%	1%	1%	2%
grade 7 events	42768	42301	50989	47744	46334
	85%	84%	87%	83%	86%

2.2 Compared Parameters

Parameter	Planned	Actual	Parameter	Planned	Actual
Instrument	ACIS	ACIS	Obspar format version number	7	7
Detector	ACIS-01236	ACIS-01236	Obspar file type	PREDICTED	ACTUAL
Grating	NONE	NONE	Obspar update status	NONE	UPDATED
Data mode	VFAINT	VFAINT	Number of optional ACIS chips dropped	0	0
Observation mode	POINTING	POINTING	On-chip summing requested	N	N
[deg] Pointing RA	167.251111	167.2480381728472	Subarray requested	NONE	NONE
[deg] Pointing Dec	9.106364	9.133554541967774	Alternating exposures requested	N	N
[deg] Pointing Roll	65.855112	66.06428541494931	[s] Primary exposure time	0.000000	3.1
[mm] SIM focus pos	-0.782348	-0.7809083437167272			
[mm] SIM defocus	0	0.001439871863259334			
[mm] SIM translation stage pos	-227.742463	-227.734108438797			
[mm] SIM translation stage offset	-5.85	-5.858344564132665			
[s] Observation start time (MET)	153895286.184000	153894066.31827			
Observation start date	2002-11-17T04:40:22	2002-11-17T04:21:06			
[s] Observation end time (MET)	153905286.184000	153905732.86876			
Observation end date	2002-11-17T07:27:02	2002-11-17T07:35:32			
Read mode	TIMED	TIMED			

2.3 Aspect



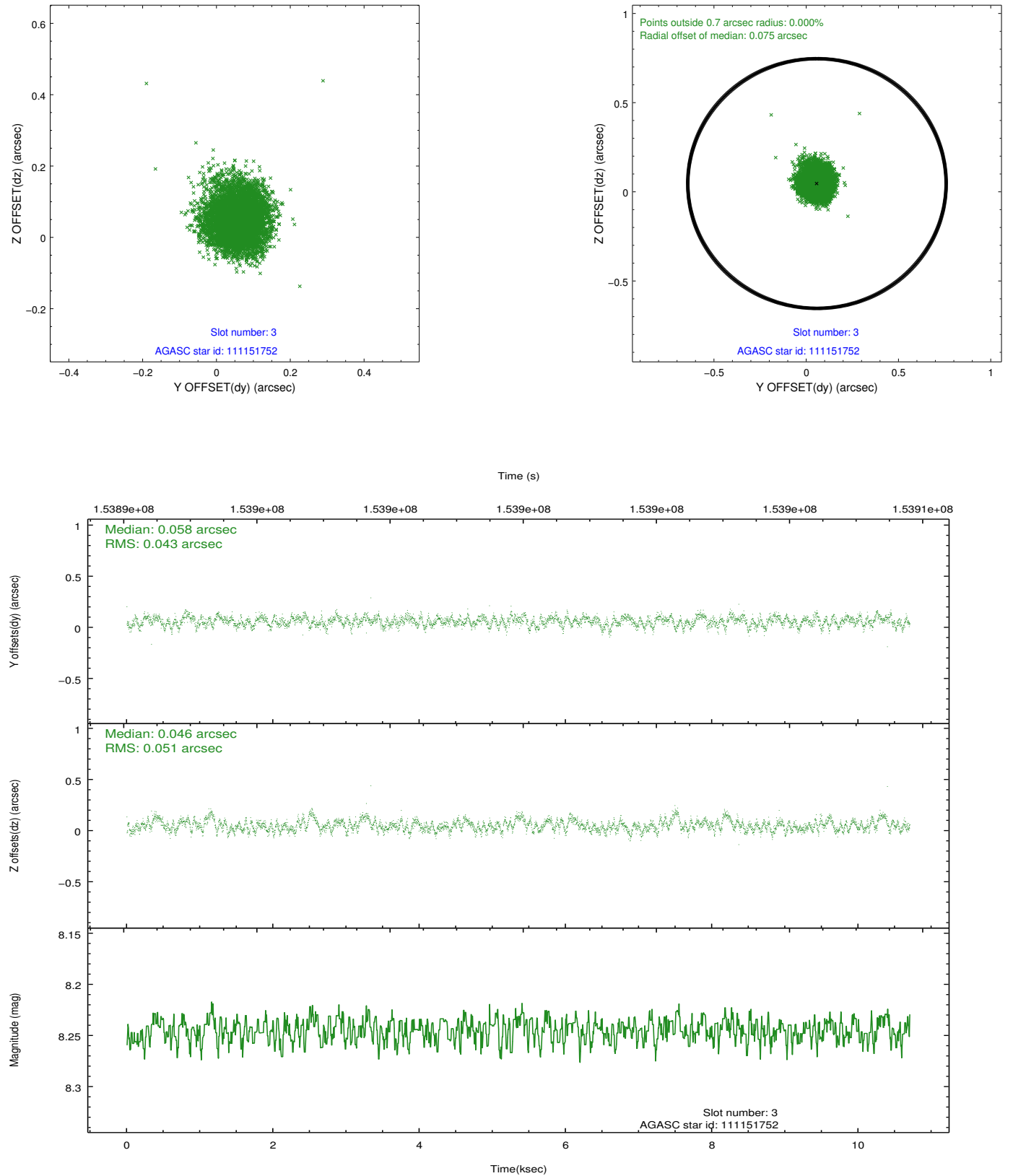


Slot Statistics

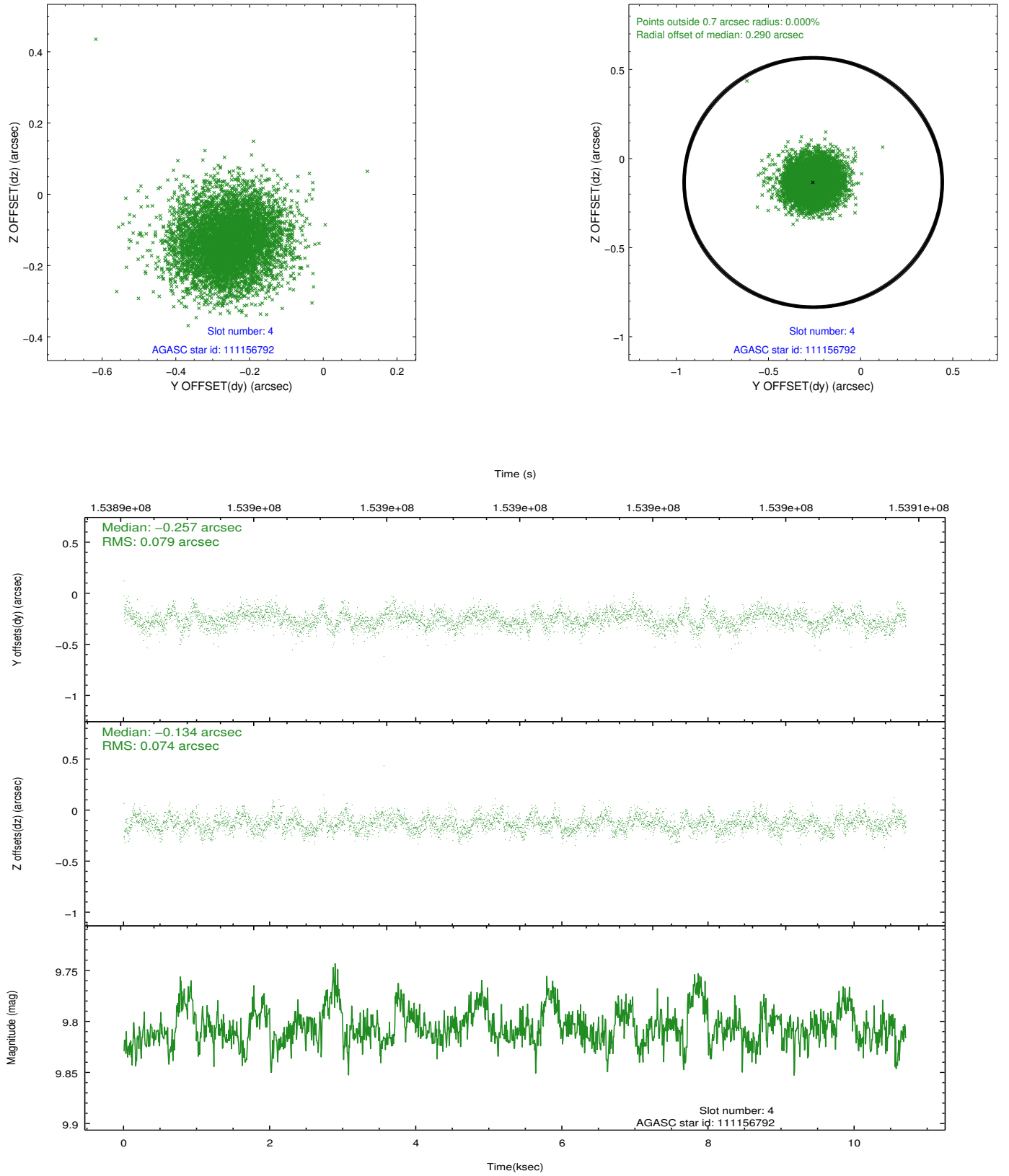
slot	status	id	mag	n_pts	med_dy	med_dz	dr1	dr2	ra	dec	mean_y	mean_z
0	FID	ACIS-I-1	7.24	2612	0.033	-0.002	0.007	0.012	0.000000	0.000000	938.48	-952.30
1	FID	ACIS-I-5	7.24	2611	-0.160	0.054	0.007	0.011	0.000000	0.000000	-1809.54	944.96
2	FID	ACIS-I-6	7.26	2612	0.035	0.019	0.008	0.012	0.000000	0.000000	403.51	1589.98
3	GUIDE	111151752	8.24	5223	0.058	0.046	0.071	0.113	167.025904	9.023657	-598.86	608.75
4	GUIDE	111156792	9.81	5213	-0.257	-0.134	0.116	0.181	167.249601	9.695709	1933.55	872.70
5	GUIDE	111159072	9.73	5220	0.152	0.166	0.112	0.179	167.199047	8.800463	-1080.09	-281.38
6	GUIDE	111153480	8.97	5222	-0.172	-0.229	0.093	0.144	166.768914	9.619364	985.35	2317.66
7	GUIDE	111159912	10.01	5219	0.219	0.139	0.113	0.189	167.360777	8.811339	-808.84	-789.94

2.4 Star Slots

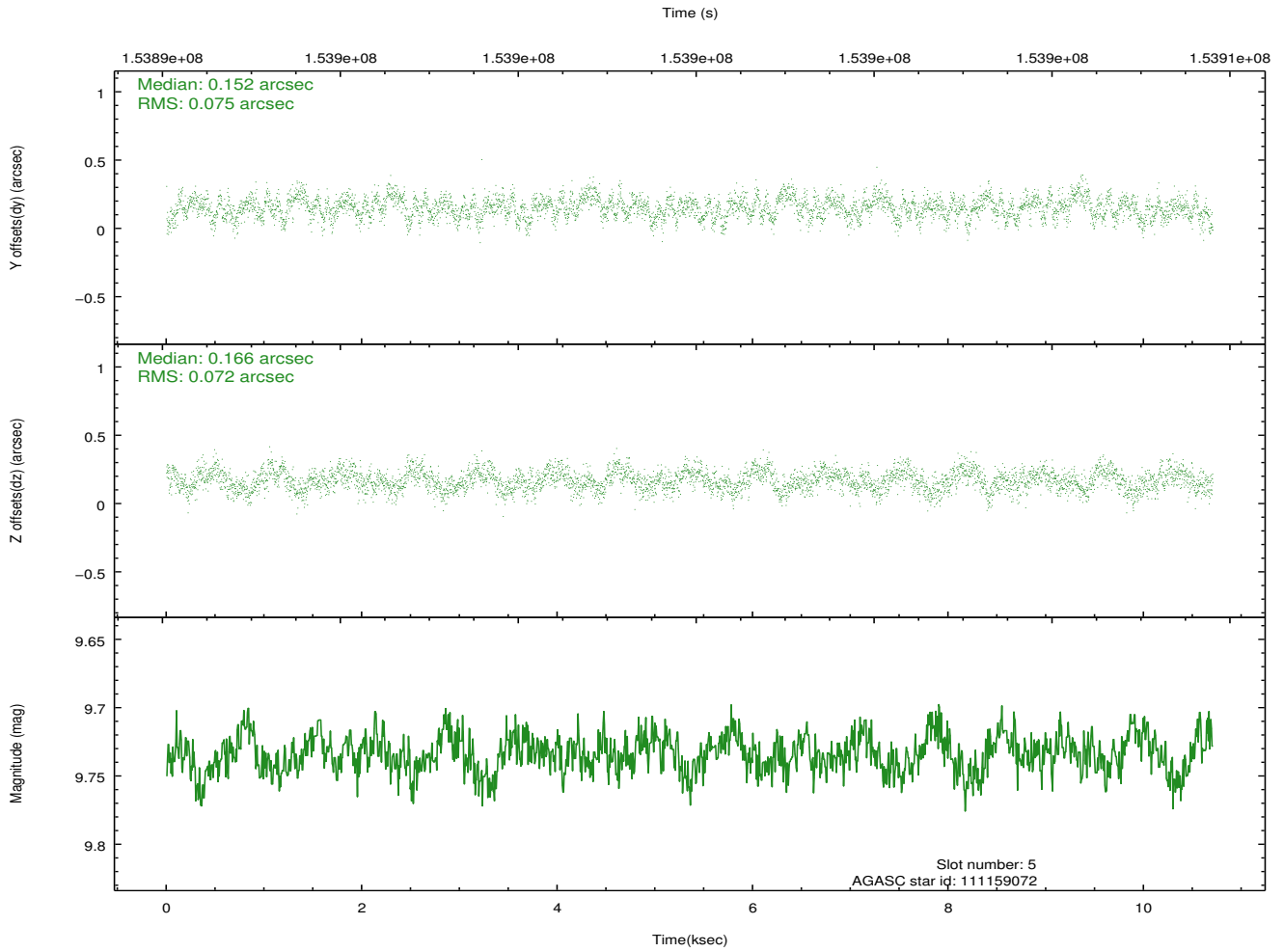
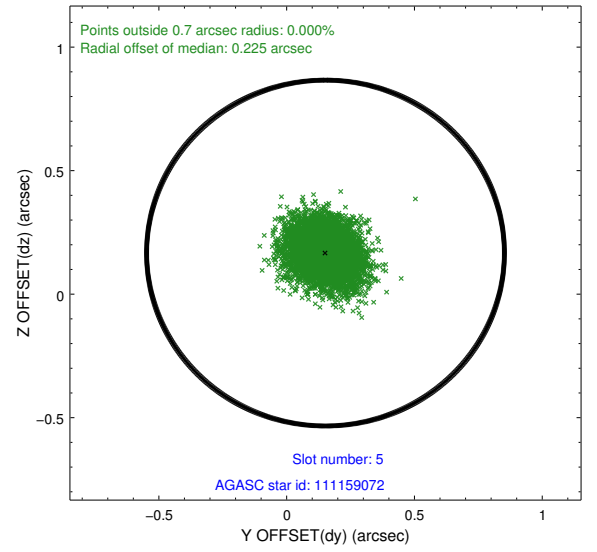
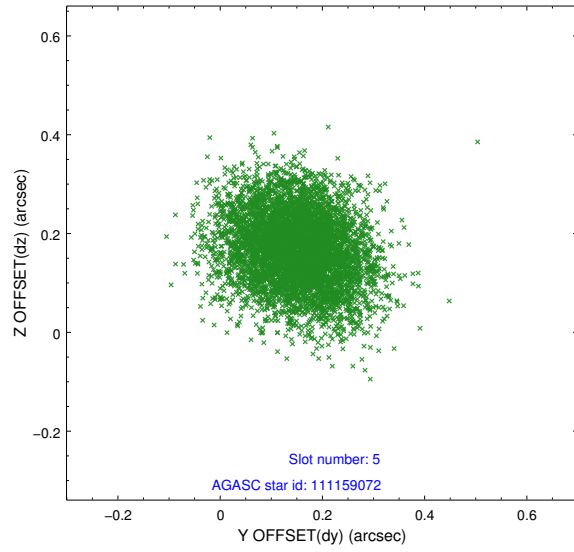
2.4.1 Slot 3



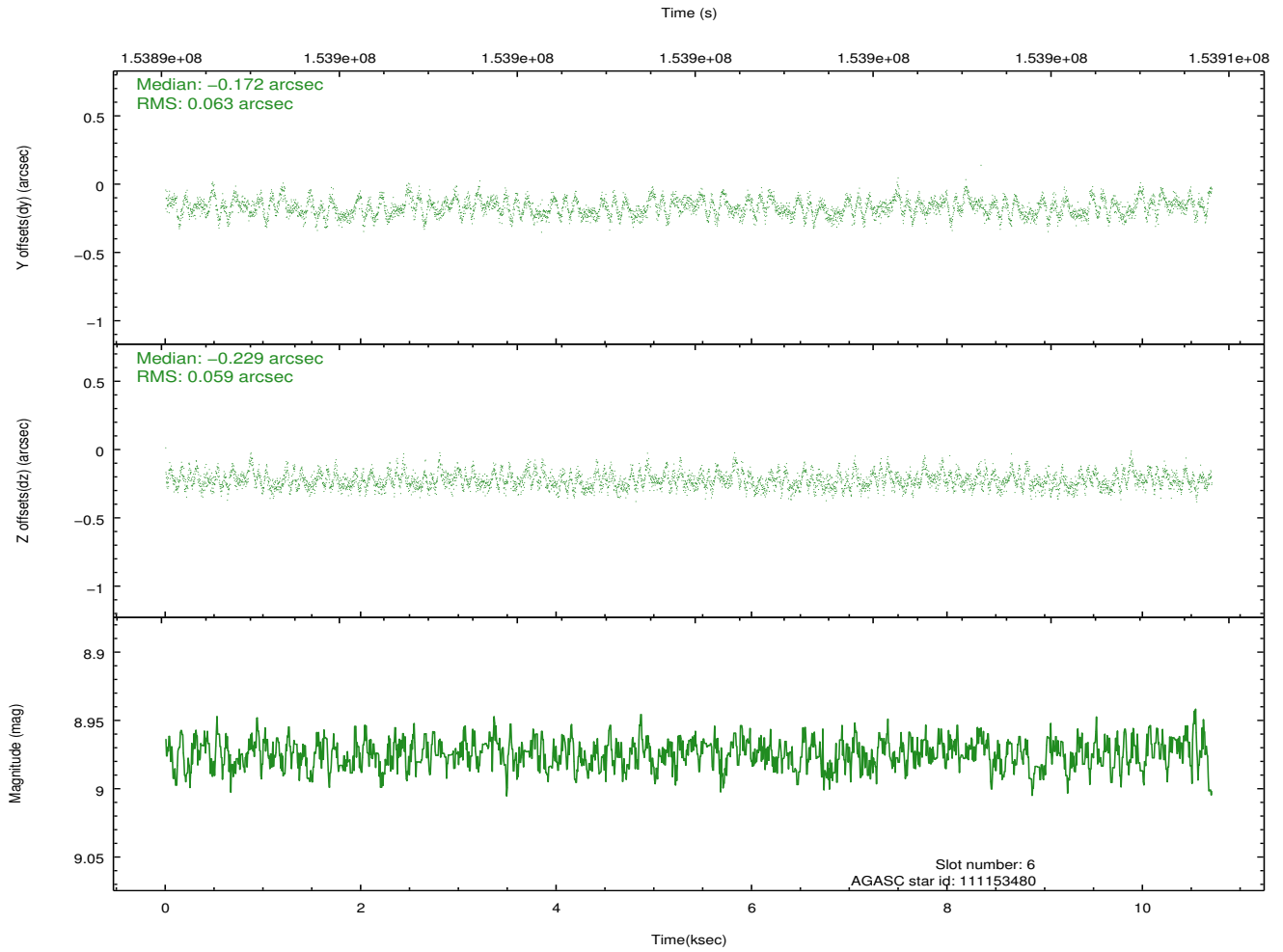
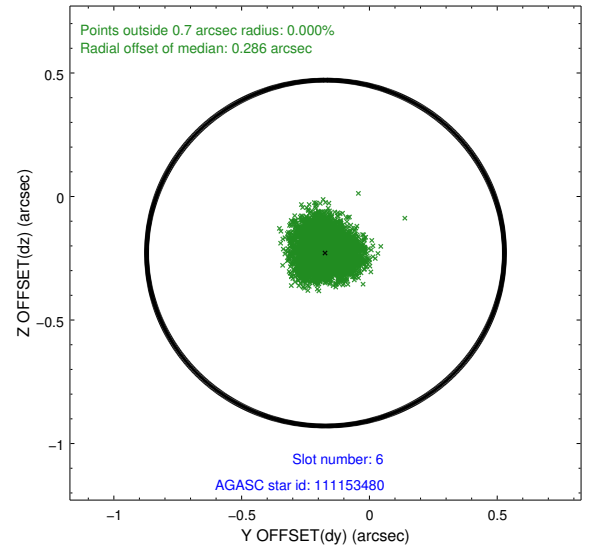
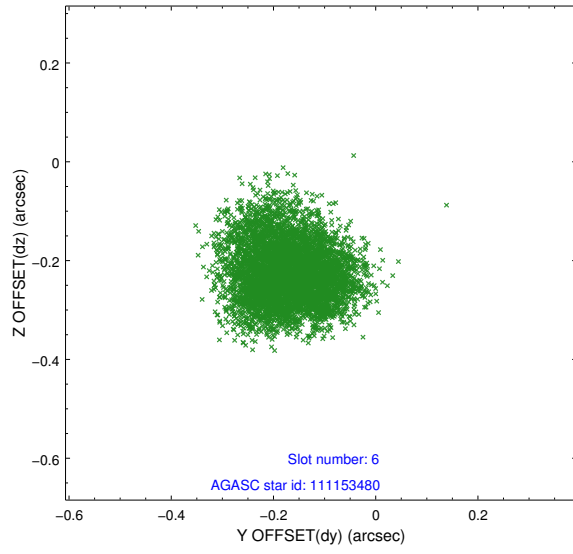
2.4.2 Slot 4



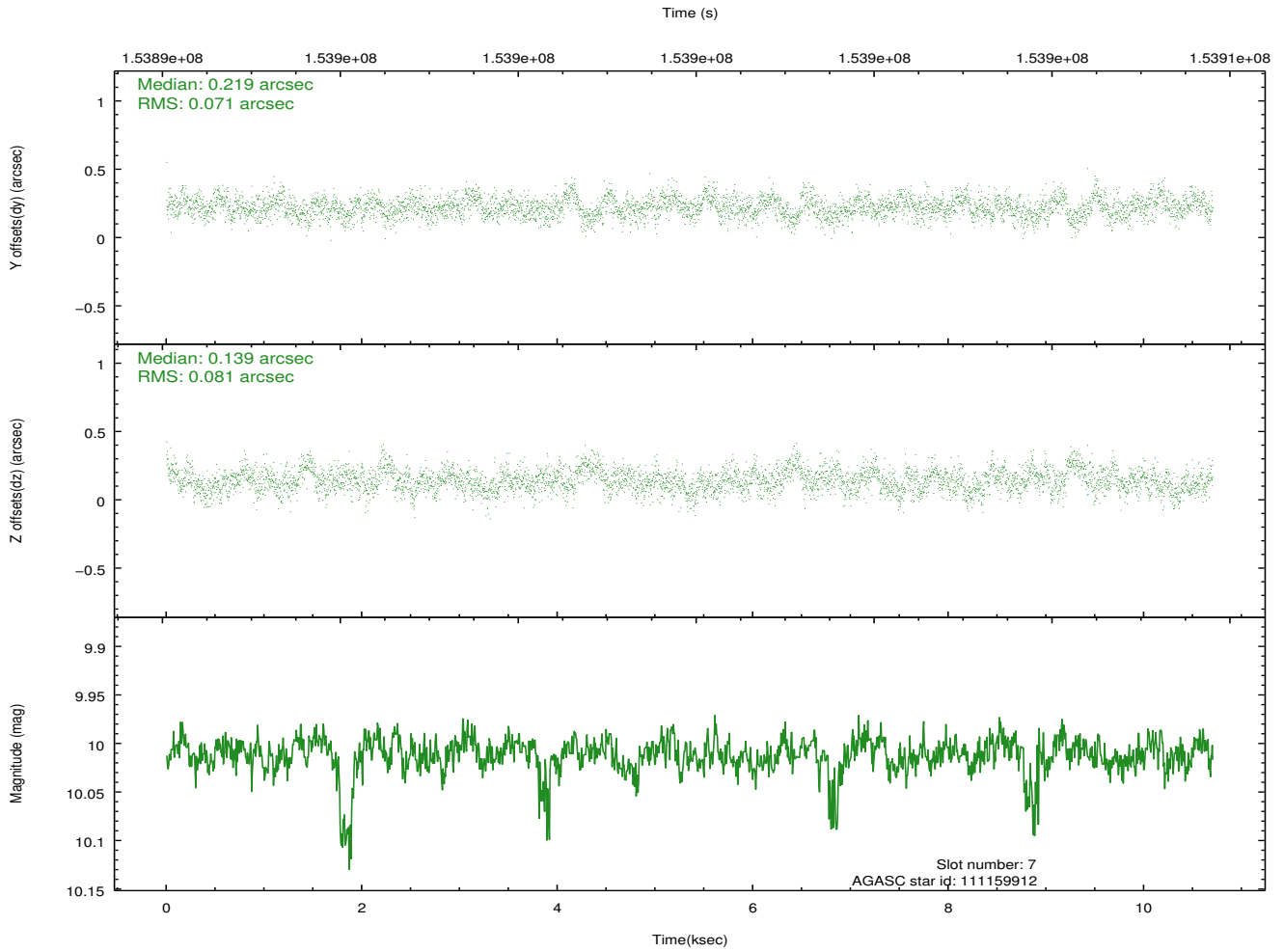
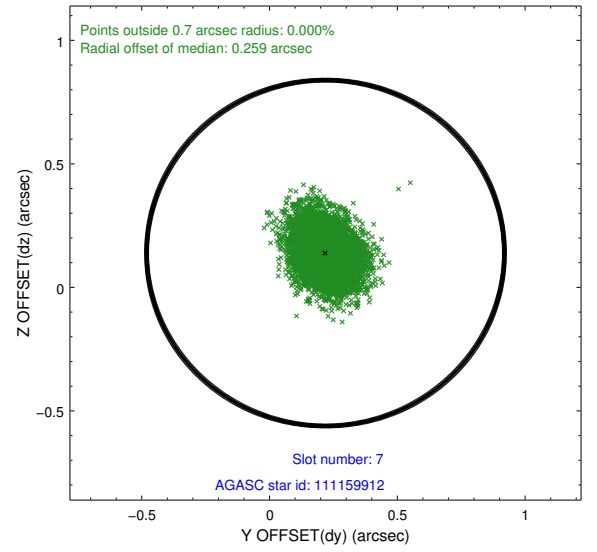
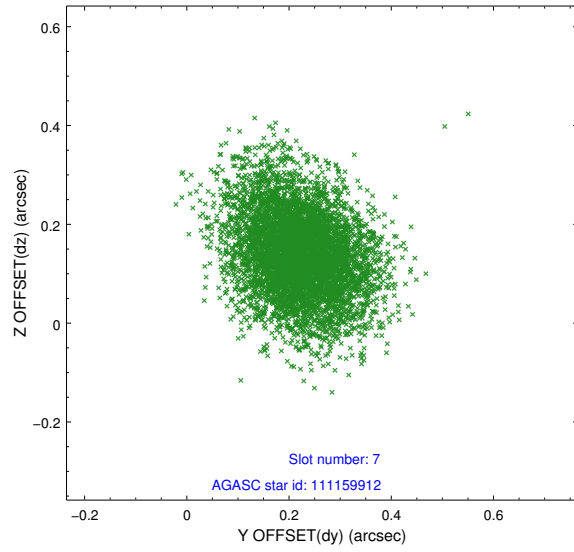
2.4.3 Slot 5



2.4.4 Slot 6

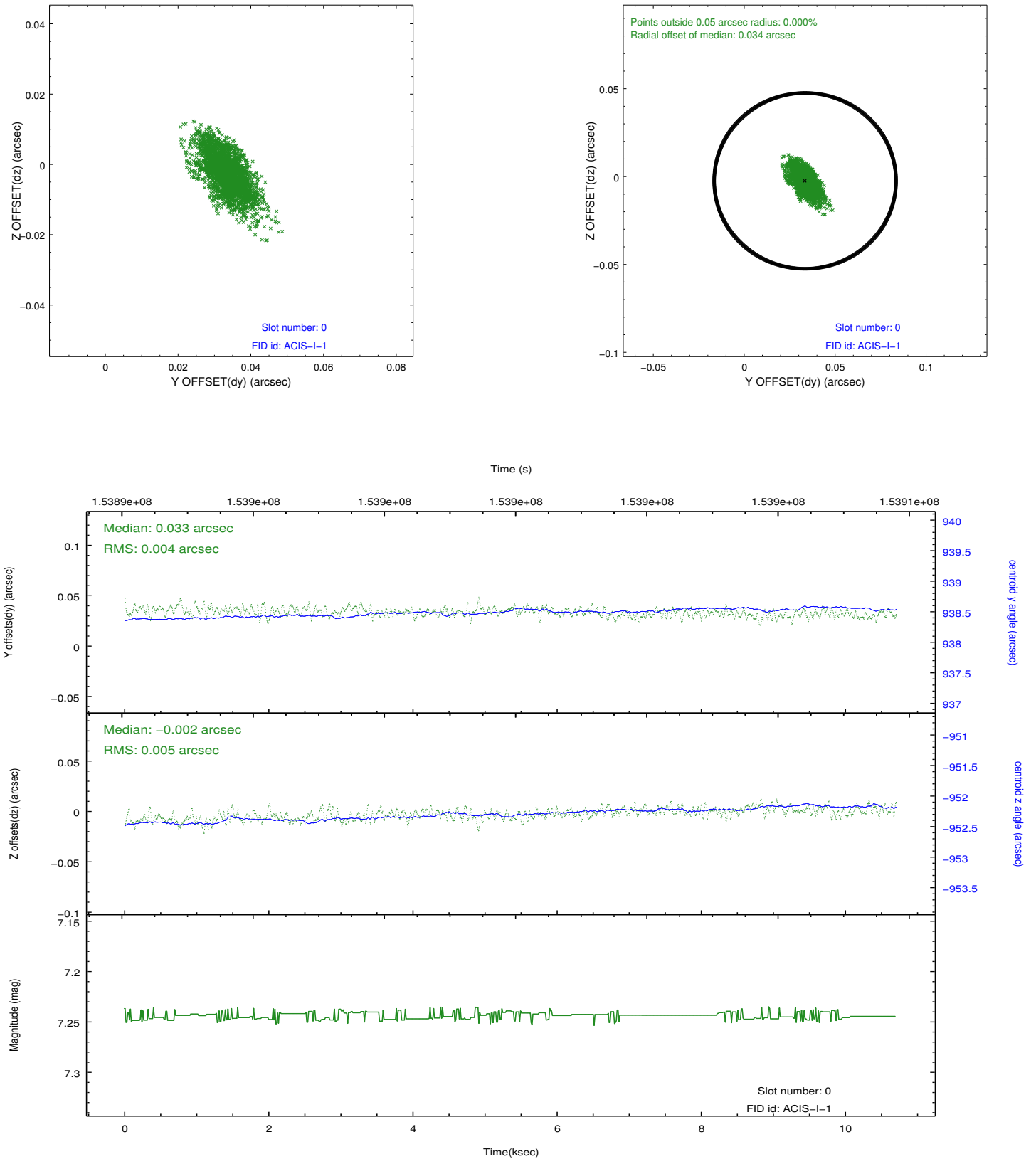


2.4.5 Slot 7

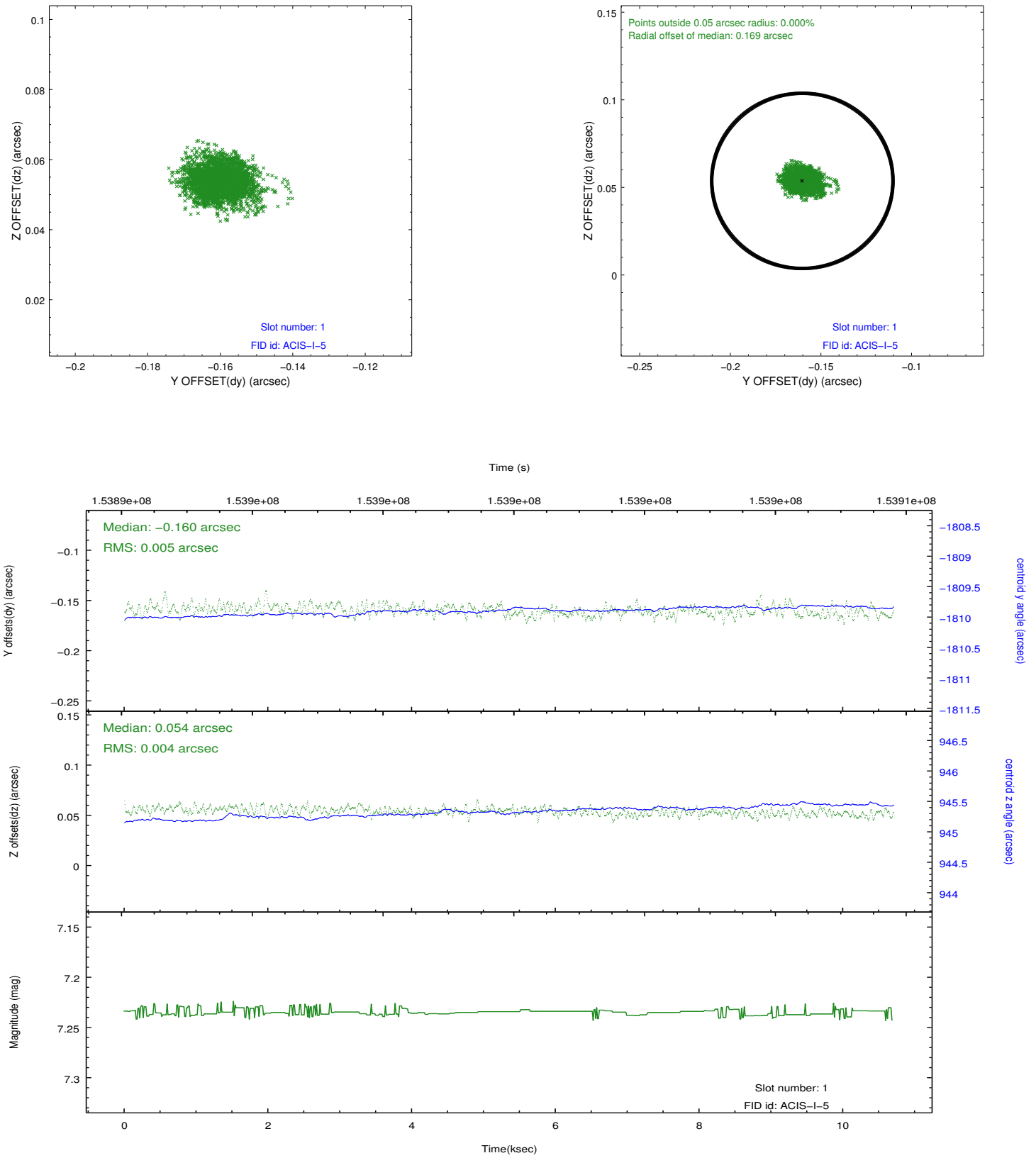


2.5 FID Slots

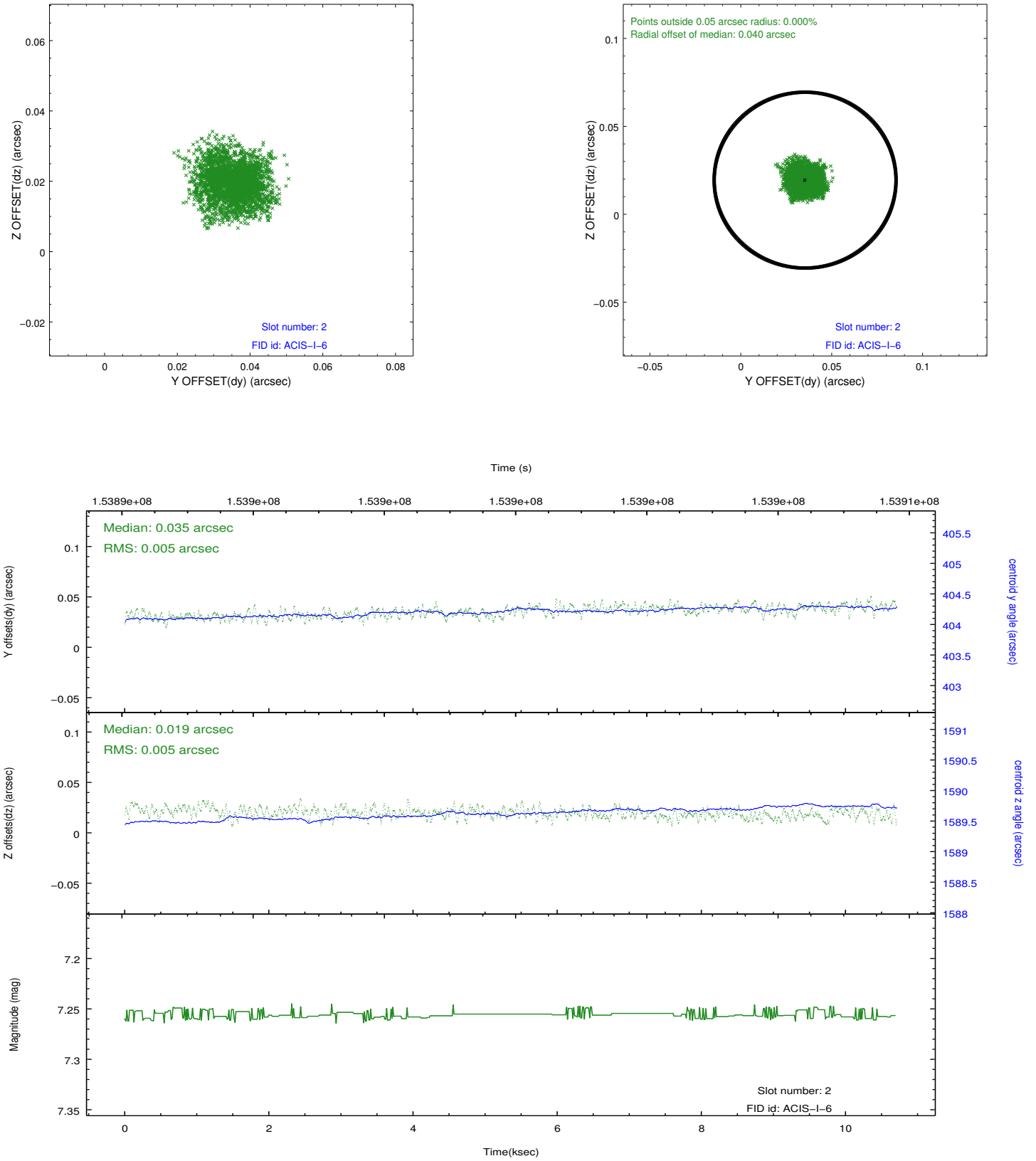
2.5.1 Slot 0



2.5.2 Slot 1



2.5.3 Slot 2



A Summary

A.1 Status

V&V Scientist	Jen Lauer
V&V Date (YYYY-MM-DD)	2012.10.26
V&V Edition	1
V&V Disposition and Status	OK
V&V Charge Time	10.084

A.2 Comments